

Test Laboratory: Compliance Certification Services

File Name: [1_L-Touch.da4](#)

DUT: LG Electronics; Type: LG-PD820; Serial: #1

Program Name: Left Head

Ambient Temp.: 24.0 deg. C; Liquid Temp.: 23.0 deg. C

Communication System: CDMA Cellular Band; Frequency: 836.49 MHz; Duty Cycle: 1:1

Medium parameters used (interpolated): $f = 836.49$ MHz; $\sigma = 0.917$ mho/m; $\epsilon_r = 41.8$; $\rho = 1000$ kg/m³

Phantom section: Left Section

DASY4 Configuration:

- Probe: ES3DV2 - SN3021; ConvF(6.5, 6.5, 6.5); Calibrated: 7/29/2003

- Sensor-Surface: 4mm (Mechanical Surface Detection)

- Electronics: DAE3 Sn500; Calibrated: 12/23/2003

- Phantom: SAM 2; Type: SAM 2; Serial: 1050

- Measurement SW: DASY4, V4.2 Build 44; Postprocessing SW: SEMCAD, V1.8 Build 112

Touch position, Middle/Area Scan (7x11x1): Measurement grid: dx=15mm, dy=15mm

Reference Value = 6.68 V/m; Power Drift = -0.15 dB

Maximum value of SAR (measured) = 0.556 mW/g

[Info: Interpolated medium parameters used for SAR evaluation!](#)

Touch position, Middle/Zoom Scan (5x5x7)/Cube 0: Measurement grid: dx=7.5mm, dy=7.5mm, dz=5mm

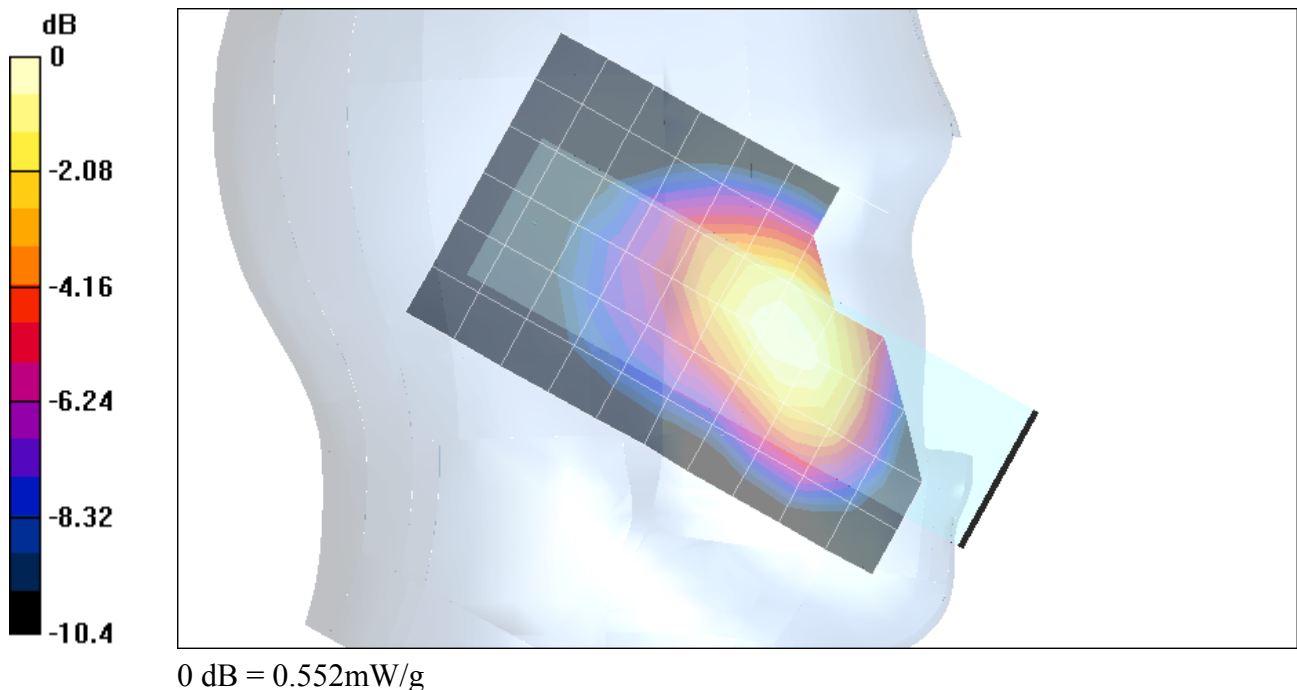
Reference Value = 6.68 V/m; Power Drift = -0.15 dB

Maximum value of SAR (measured) = 0.552 mW/g

Peak SAR (extrapolated) = 0.770 W/kg

SAR(1 g) = 0.527 mW/g; SAR(10 g) = 0.342 mW/g

[Info: Interpolated medium parameters used for SAR evaluation!](#)



Test Laboratory: Compliance Certification Services

File Name: [1_L-Touch.da4](#)

DUT: LG Electronics; Type: LG-PD820; Serial: #1
Program Name: Left Head

Communication System: CDMA Cellular Band; Frequency: 836.49 MHz; Duty Cycle: 1:1

Medium parameters used (interpolated): $f = 836.49$ MHz; $\sigma = 0.917$ mho/m; $\epsilon_r = 41.8$; $\rho = 1000$ kg/m³

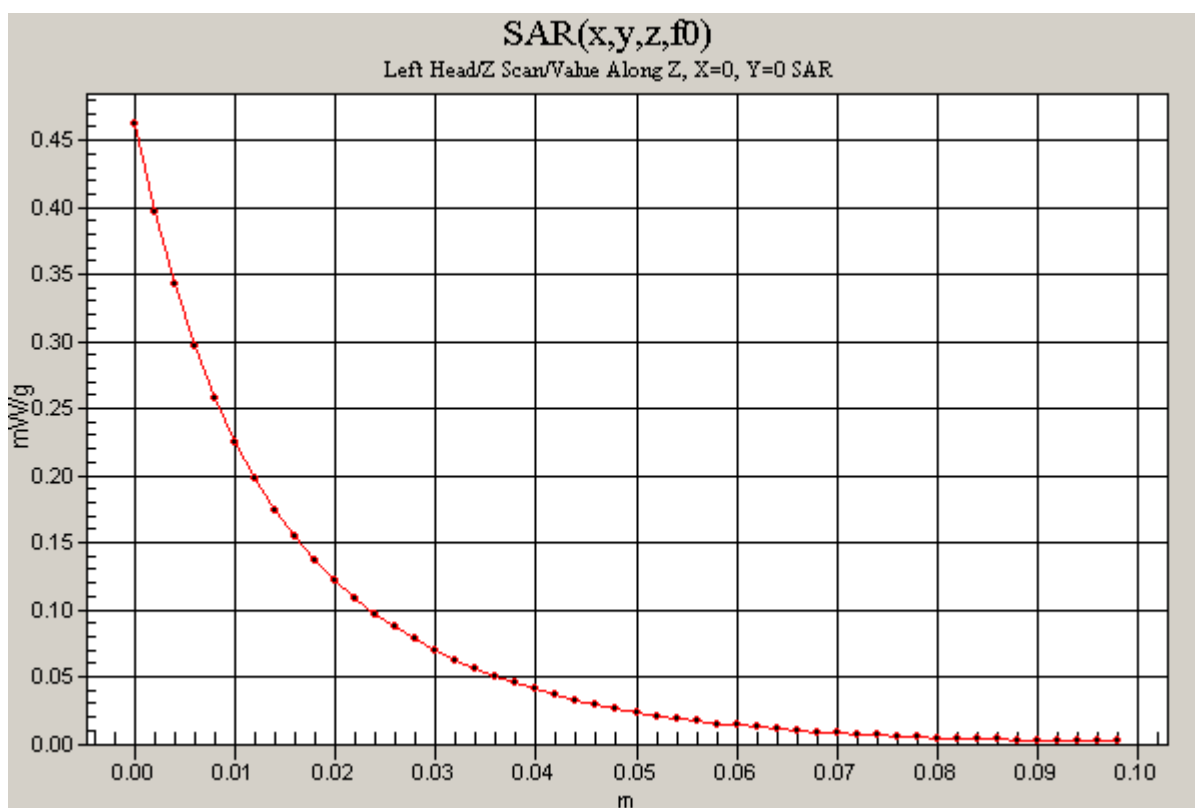
Phantom section: Left Section

Touch position, Middle/Z Scan (1x1x51): Measurement grid: dx=20mm, dy=20mm, dz=2mm

Reference Value = 6.68 V/m; Power Drift = -0.15 dB

Maximum value of SAR (measured) = 0.462 mW/g

[Info: Interpolated medium parameters used for SAR evaluation!](#)



Test Laboratory: Compliance Certification Services

File Name: [2_L-Tilt.da4](#)

DUT: LG Electronics; Type: LG-PD820; Serial: #1

Program Name: Left Head

Ambient Temp.: 24.0 deg. C; Liquid Temp.: 23.0 deg. C

Communication System: CDMA Cellular Band; Frequency: 836.49 MHz; Duty Cycle: 1:1

Medium parameters used (interpolated): $f = 836.49$ MHz; $\sigma = 0.917$ mho/m; $\epsilon_r = 41.8$; $\rho = 1000$ kg/m³

Phantom section: Left Section

DASY4 Configuration:

- Probe: ES3DV2 - SN3021; ConvF(6.5, 6.5, 6.5); Calibrated: 7/29/2003

- Sensor-Surface: 4mm (Mechanical Surface Detection)

- Electronics: DAE3 Sn500; Calibrated: 12/23/2003

- Phantom: SAM 2; Type: SAM 2; Serial: 1050

- Measurement SW: DASY4, V4.2 Build 44; Postprocessing SW: SEMCAD, V1.8 Build 112

Tilt position, Middle/Area Scan (7x11x1): Measurement grid: dx=15mm, dy=15mm

Reference Value = 7.17 V/m; Power Drift = -0.0 dB

Maximum value of SAR (measured) = 0.135 mW/g

[Info: Interpolated medium parameters used for SAR evaluation!](#)

Tilt position, Middle/Zoom Scan (5x5x7)/Cube 0: Measurement grid: dx=7.5mm, dy=7.5mm, dz=5mm

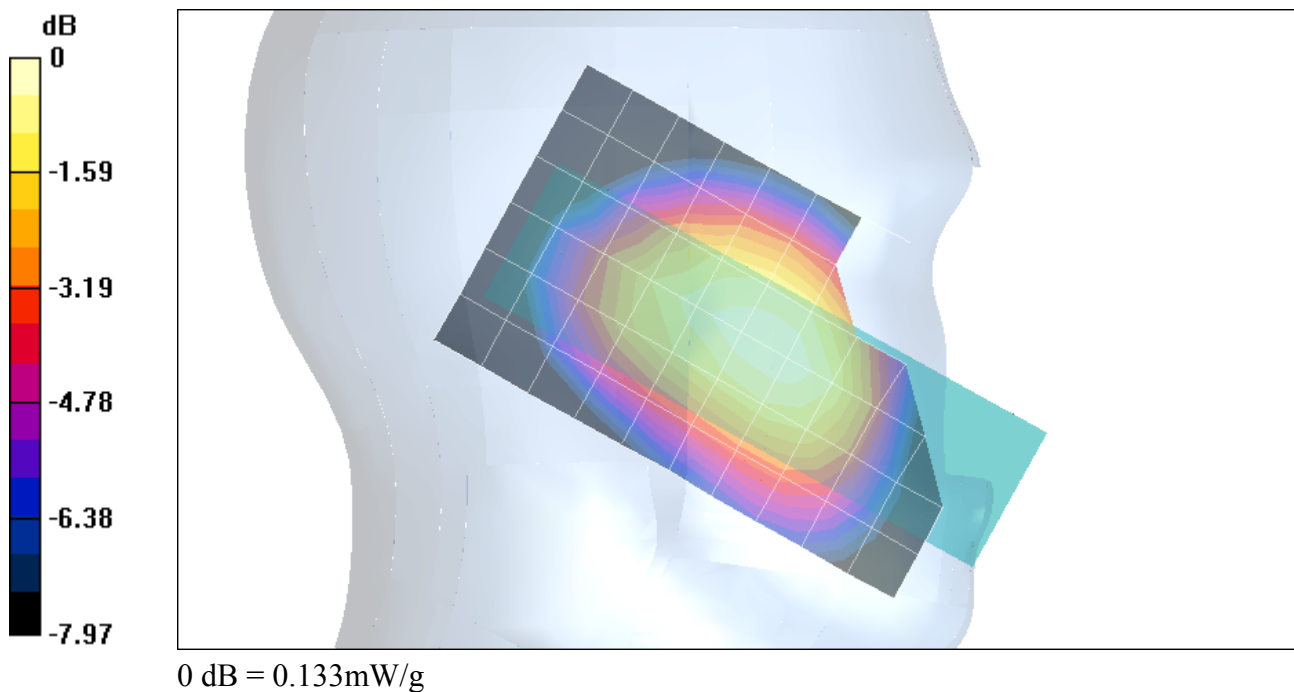
Reference Value = 7.17 V/m; Power Drift = -0.0 dB

Maximum value of SAR (measured) = 0.133 mW/g

Peak SAR (extrapolated) = 0.169 W/kg

SAR(1 g) = 0.128 mW/g; SAR(10 g) = 0.094 mW/g

[Info: Interpolated medium parameters used for SAR evaluation!](#)



Test Laboratory: Compliance Certification Services

File Name: [2_L-Tilt.da4](#)

DUT: LG Electronics; Type: LG-PD820; Serial: #1
Program Name: Left Head

Communication System: CDMA Cellular Band; Frequency: 836.49 MHz; Duty Cycle: 1:1

Medium parameters used (interpolated): $f = 836.49$ MHz; $\sigma = 0.917$ mho/m; $\epsilon_r = 41.8$; $\rho = 1000$ kg/m³

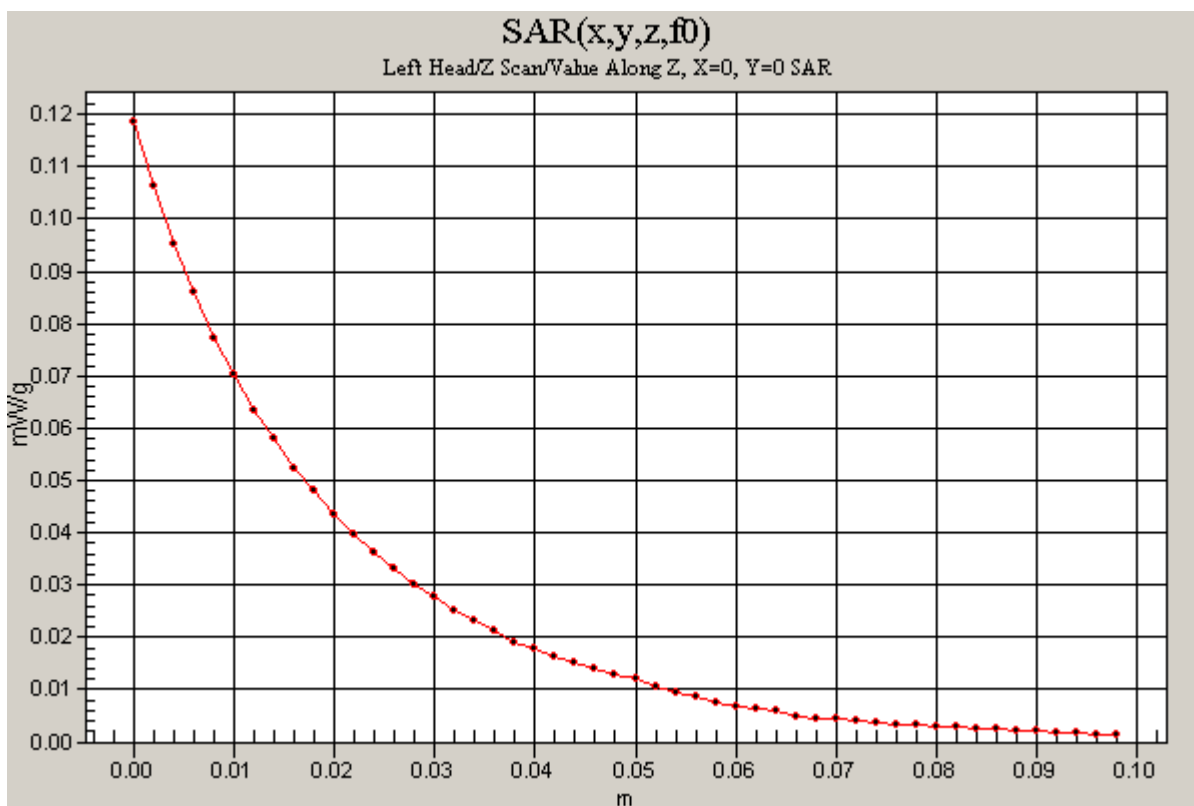
Phantom section: Left Section

Tilt position, Middle/Z Scan (1x1x51): Measurement grid: $dx=20$ mm, $dy=20$ mm, $dz=2$ mm

Reference Value = 7.17 V/m; Power Drift = -0.1 dB

Maximum value of SAR (measured) = 0.119 mW/g

Info: Interpolated medium parameters used for SAR evaluation!



Test Laboratory: Compliance Certification Services
 File Name: [3_R-Touch.da4](#)

DUT: LG Electronics; Type: LG-PD820; Serial: #1
Program Name: Right Head
Ambient Temp.: 24.0 deg. C; Liquid Temp.: 23.0 deg. C

Communication System: CDMA Cellular Band; Frequency: 836.49 MHz; Duty Cycle: 1:1
 Medium parameters used (interpolated): $f = 836.49$ MHz; $\sigma = 0.917$ mho/m; $\epsilon_r = 41.8$; $\rho = 1000$ kg/m³
 Phantom section: Right Section

DASY4 Configuration:

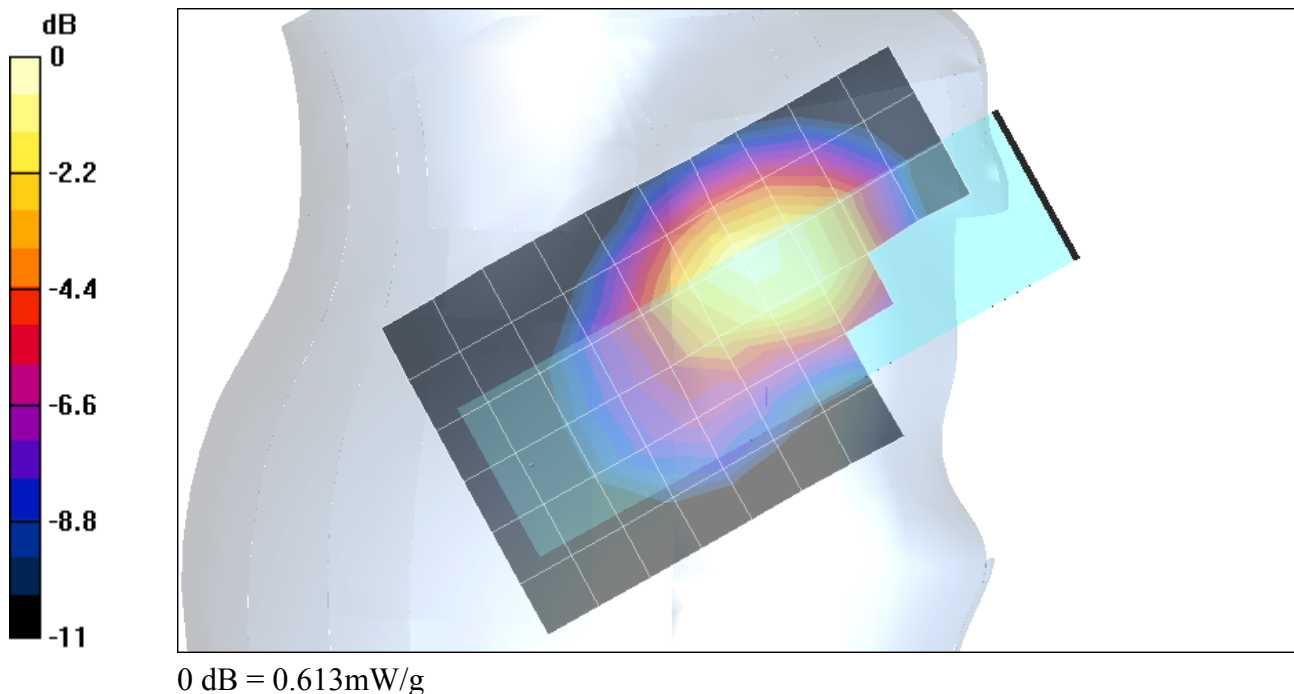
- Probe: ES3DV2 - SN3021; ConvF(6.5, 6.5, 6.5); Calibrated: 7/29/2003
- Sensor-Surface: 4mm (Mechanical Surface Detection)
- Electronics: DAE3 Sn500; Calibrated: 12/23/2003
- Phantom: SAM 2; Type: SAM 2; Serial: 1050
- Measurement SW: DASY4, V4.2 Build 44; Postprocessing SW: SEMCAD, V1.8 Build 112

Touch position, Middle/Area Scan (7x11x1): Measurement grid: dx=15mm, dy=15mm
 Reference Value = 6.51 V/m; Power Drift = -0.7 dB
 Maximum value of SAR (measured) = 0.580 mW/g

[Info: Interpolated medium parameters used for SAR evaluation!](#)

Touch position, Middle/Zoom Scan (5x5x7)/Cube 0: Measurement grid: dx=7.5mm, dy=7.5mm, dz=5mm
 Reference Value = 6.51 V/m; Power Drift = -0.7 dB
 Maximum value of SAR (measured) = 0.613 mW/g
 Peak SAR (extrapolated) = 0.878 W/kg
SAR(1 g) = 0.565 mW/g; SAR(10 g) = 0.357 mW/g

[Info: Interpolated medium parameters used for SAR evaluation!](#)



Test Laboratory: Compliance Certification Services

File Name: [3_R-Touch.da4](#)

DUT: LG Electronics; Type: LG-PD820; Serial: #1

Program Name: Right Head

Ambient Temp.: 24.0 deg. C; Liquid Temp.: 23.0 deg. C

Communication System: CDMA Cellular Band; Frequency: 848.19 MHz; Duty Cycle: 1:1

Medium parameters used (interpolated): $f = 848.19$ MHz; $\sigma = 0.925$ mho/m; $\epsilon_r = 41.6$; $\rho = 1000$ kg/m³

Phantom section: Right Section

DASY4 Configuration:

- Probe: ES3DV2 - SN3021; ConvF(6.5, 6.5, 6.5); Calibrated: 7/29/2003

- Sensor-Surface: 4mm (Mechanical Surface Detection)

- Electronics: DAE3 Sn500; Calibrated: 12/23/2003

- Phantom: SAM 2; Type: SAM 2; Serial: 1050

- Measurement SW: DASY4, V4.2 Build 44; Postprocessing SW: SEMCAD, V1.8 Build 112

Touch position, High/Area Scan (7x11x1): Measurement grid: dx=15mm, dy=15mm

Reference Value = 7.07 V/m; Power Drift = -0.0003 dB

Maximum value of SAR (measured) = 0.825 mW/g

[Info: Interpolated medium parameters used for SAR evaluation!](#)

Touch position, High/Zoom Scan (5x5x7)/Cube 0: Measurement grid: dx=7.5mm, dy=7.5mm, dz=5mm

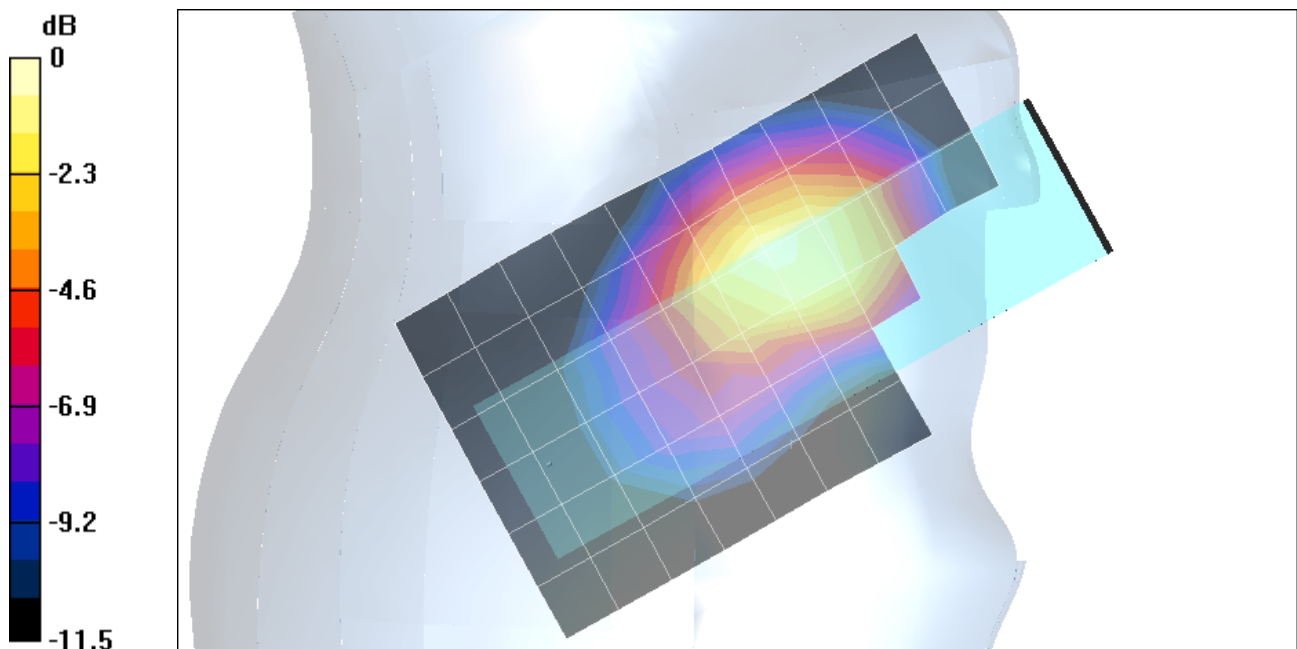
Reference Value = 7.07 V/m; Power Drift = -0.0003 dB

Maximum value of SAR (measured) = 0.890 mW/g

Peak SAR (extrapolated) = 1.28 W/kg

SAR(1 g) = 0.819 mW/g; SAR(10 g) = 0.515 mW/g

[Info: Interpolated medium parameters used for SAR evaluation!](#)



0 dB = 0.890mW/g

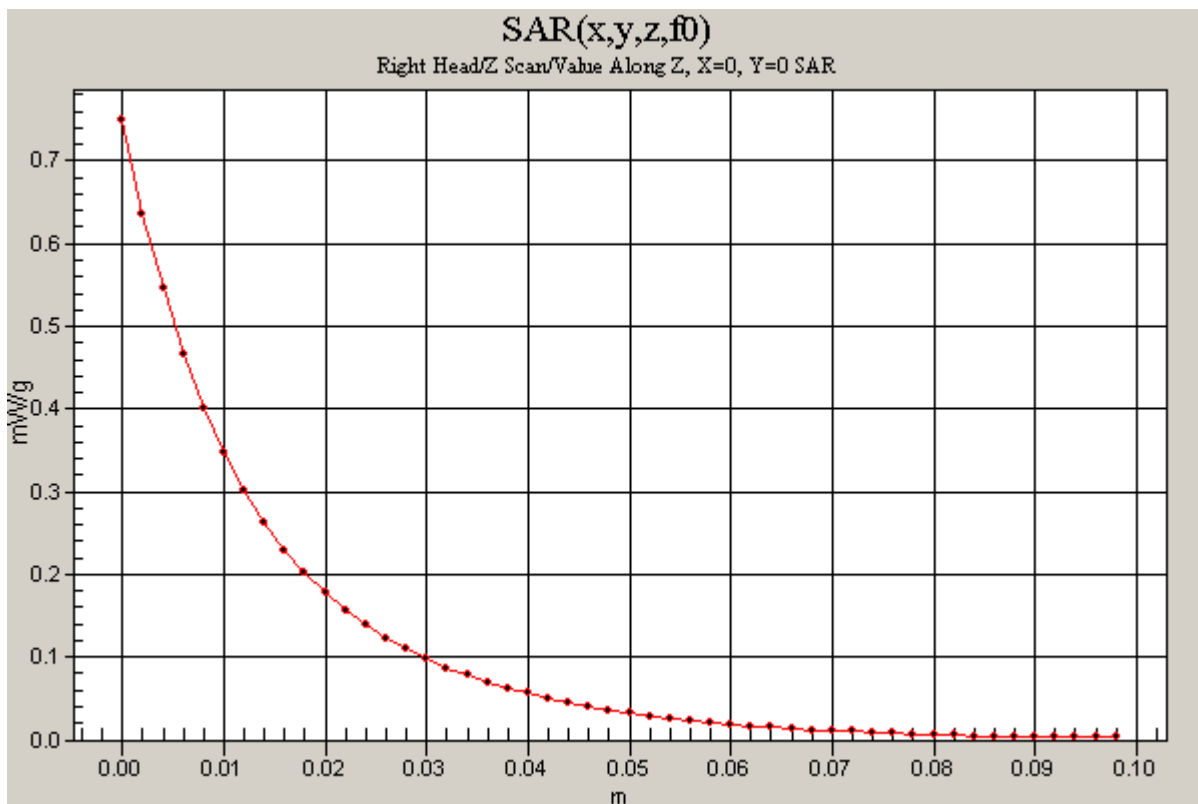
Test Laboratory: Compliance Certification Services
File Name: [3_R-Touch.da4](#)

DUT: LG Electronics; Type: LG-PD820; Serial: #1
Program Name: Right Head

Communication System: CDMA Cellular Band; Frequency: 848.19 MHz; Duty Cycle: 1:1
Medium parameters used (interpolated): $f = 848.19$ MHz; $\sigma = 0.925$ mho/m; $\epsilon_r = 41.6$; $\rho = 1000$ kg/m³
Phantom section: Right Section

Touch position, High/Z Scan (1x1x51): Measurement grid: dx=20mm, dy=20mm, dz=2mm
Reference Value = 7.07 V/m; Power Drift = -0.003 dB
Maximum value of SAR (measured) = 0.750 mW/g

[Info: Interpolated medium parameters used for SAR evaluation!](#)



Test Laboratory: Compliance Certification Services
File Name: [4_R-Tilt.da4](#)

DUT: LG Electronics; Type: LG-PD820; Serial: #1
Program Name: Right Head
Ambient Temp.: 24.0 deg. C; Liquid Temp.: 23.0 deg. C

Communication System: CDMA Cellular Band; Frequency: 848.19 MHz; Duty Cycle: 1:1
Medium parameters used (interpolated): $f = 848.19$ MHz; $\sigma = 0.925$ mho/m; $\epsilon_r = 41.6$; $\rho = 1000$ kg/m³
Phantom section: Right Section

DASY4 Configuration:

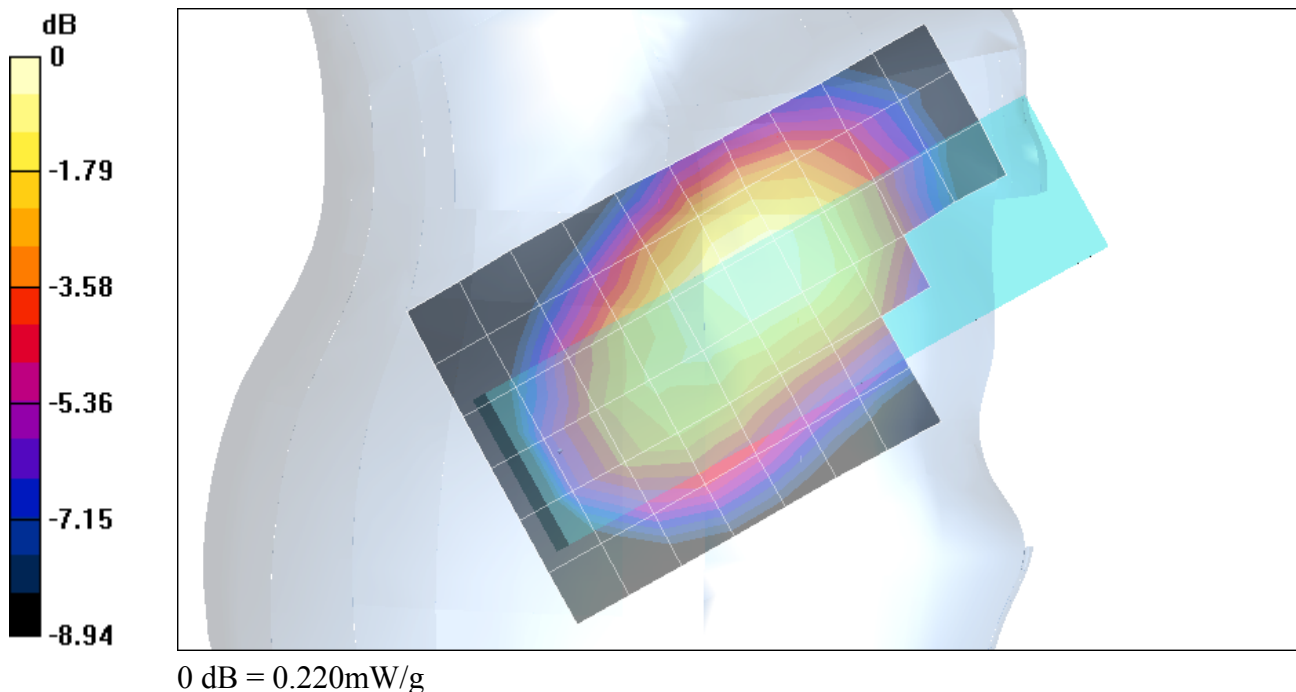
- Probe: ES3DV2 - SN3021; ConvF(6.5, 6.5, 6.5); Calibrated: 7/29/2003
- Sensor-Surface: 4mm (Mechanical Surface Detection)
- Electronics: DAE3 Sn500; Calibrated: 12/23/2003
- Phantom: SAM 2; Type: SAM 2; Serial: 1050
- Measurement SW: DASY4, V4.2 Build 44; Postprocessing SW: SEMCAD, V1.8 Build 112

Touch position, Middle/Area Scan (7x11x1): Measurement grid: dx=15mm, dy=15mm
Reference Value = 9.08 V/m; Power Drift = 0.0 dB
Maximum value of SAR (measured) = 0.210 mW/g

[Info: Interpolated medium parameters used for SAR evaluation!](#)

Touch position, Middle/Zoom Scan (5x5x7)/Cube 0: Measurement grid: dx=7.5mm, dy=7.5mm, dz=5mm
Reference Value = 9.08 V/m; Power Drift = 0.0 dB
Maximum value of SAR (measured) = 0.220 mW/g
Peak SAR (extrapolated) = 0.278 W/kg
SAR(1 g) = 0.208 mW/g; SAR(10 g) = 0.153 mW/g

[Info: Interpolated medium parameters used for SAR evaluation!](#)



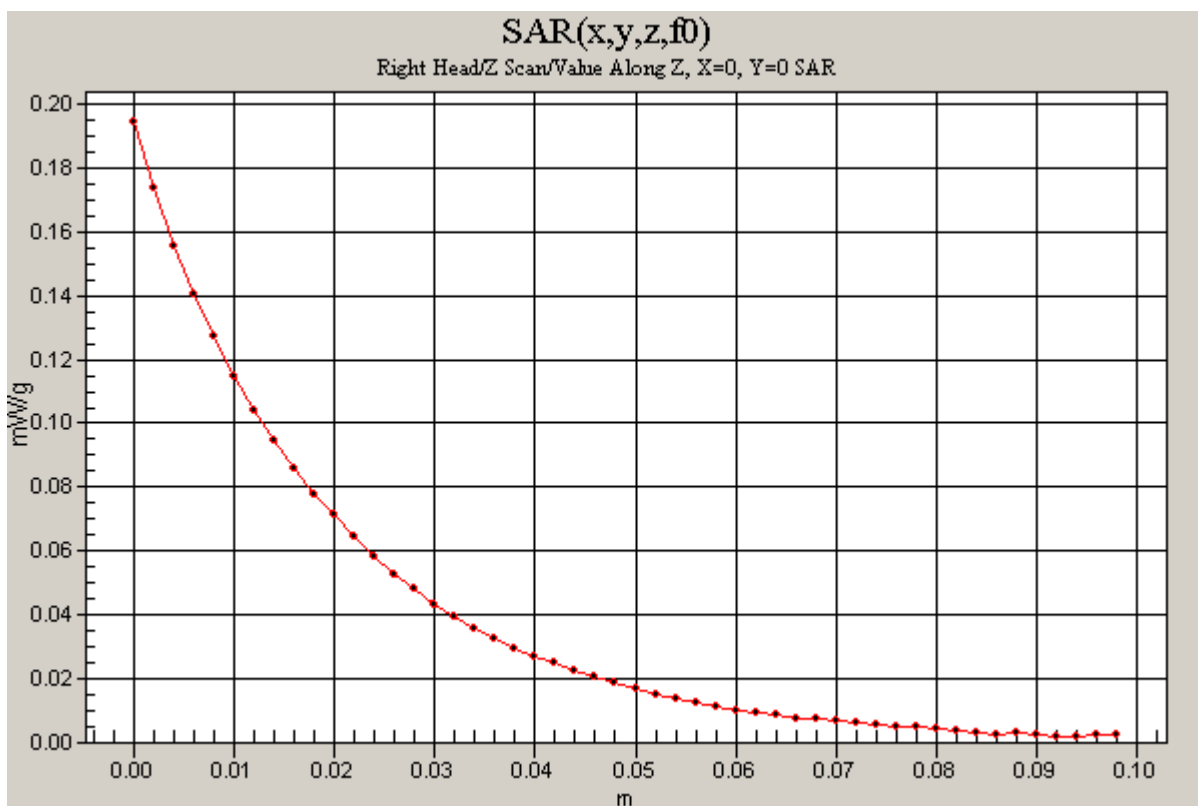
Test Laboratory: Compliance Certification Services
File Name: [4_R-Tilt.da4](#)

DUT: LG Electronics; Type: LG-PD820; Serial: #1
Program Name: Right Head

Communication System: CDMA Cellular Band; Frequency: 848.19 MHz; Duty Cycle: 1:1
Medium parameters used (interpolated): $f = 848.19$ MHz; $\sigma = 0.925$ mho/m; $\epsilon_r = 41.6$; $\rho = 1000$ kg/m³
Phantom section: Right Section

Touch position, Middle/Z Scan (1x1x51): Measurement grid: dx=20mm, dy=20mm, dz=2mm
Reference Value = 9.08 V/m; Power Drift = 0.0 dB
Maximum value of SAR (measured) = 0.195 mW/g

Info: Interpolated medium parameters used for SAR evaluation!



Test Laboratory: Compliance Certification Services

File Name: [5_Body Worn.da4](#)

DUT: LG Electronics; Type: LG-PD820; Serial: #1

Program Name: 5_Body Worn

Ambient Temp.: 24.0 deg. C; Liquid Temp.: 23.0 deg. C

Communication System: CDMA Cellular Band; Frequency: 824.82 MHz; Duty Cycle: 1:1

Medium parameters used (interpolated): $f = 824.82$ MHz; $\sigma = 0.959$ mho/m; $\epsilon_r = 56.6$; $\rho = 1000$ kg/m³

Phantom section: Flat Section

DASY4 Configuration:

- Probe: ES3DV2 - SN3021; ConvF(6.3, 6.3, 6.3); Calibrated: 7/29/2003

- Sensor-Surface: 4mm (Mechanical Surface Detection)

- Electronics: DAE3 Sn500; Calibrated: 12/23/2003

- Phantom: SAM 1; Type: SAM 1; Serial: 1185

- Measurement SW: DASY4, V4.2 Build 44; Postprocessing SW: SEMCAD, V1.8 Build 112

Low Ch./Area Scan (6x10x1): Measurement grid: dx=15mm, dy=15mm

Reference Value = 14 V/m; Power Drift = -0.2 dB

Maximum value of SAR (measured) = 0.309 mW/g

[Info: Interpolated medium parameters used for SAR evaluation!](#)

Low Ch./Zoom Scan (5x5x7)/Cube 0: Measurement grid: dx=7.5mm, dy=7.5mm, dz=5mm

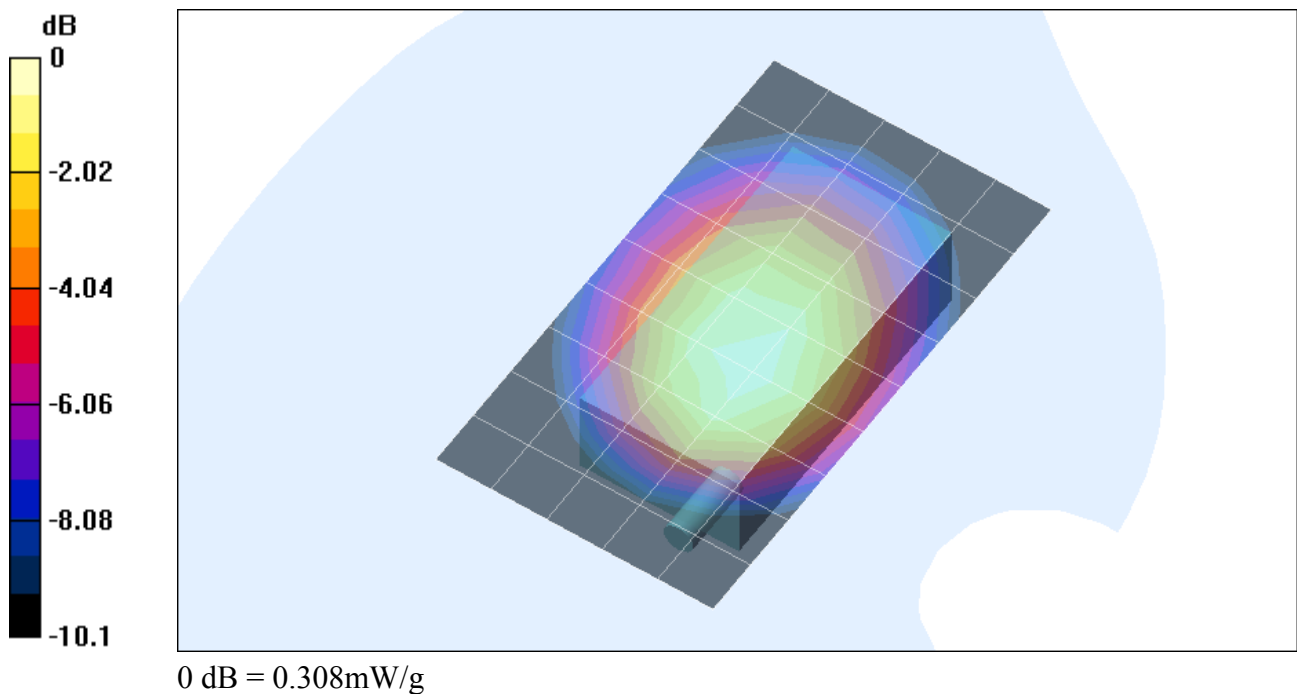
Reference Value = 14 V/m; Power Drift = -0.2 dB

Maximum value of SAR (measured) = 0.308 mW/g

Peak SAR (extrapolated) = 0.395 W/kg

SAR(1 g) = 0.289 mW/g; SAR(10 g) = 0.202 mW/g

[Info: Interpolated medium parameters used for SAR evaluation!](#)



Test Laboratory: The name of your organization

File Name: [5_Body Worn.da4](#)

DUT: LG Electronics; Type: LG-PD820; Serial: #1

Program Name: 5_Body Worn

Ambient Temp.: 24.0 deg. C; Liquid Temp.: 23.0 deg. C

Communication System: CDMA Cellular Band; Frequency: 836.49 MHz; Duty Cycle: 1:1

Medium parameters used (interpolated): $f = 836.49$ MHz; $\sigma = 0.974$ mho/m; $\epsilon_r = 56.5$; $\rho = 1000$ kg/m³

Phantom section: Flat Section

DASY4 Configuration:

- Probe: ES3DV2 - SN3021; ConvF(6.3, 6.3, 6.3); Calibrated: 7/29/2003

- Sensor-Surface: 4mm (Mechanical Surface Detection)

- Electronics: DAE3 Sn500; Calibrated: 12/23/2003

- Phantom: SAM 1; Type: SAM 1; Serial: 1185

- Measurement SW: DASY4, V4.2 Build 44; Postprocessing SW: SEMCAD, V1.8 Build 112

Middle Ch./Area Scan (6x10x1): Measurement grid: dx=15mm, dy=15mm

Reference Value = 14.3 V/m; Power Drift = -0.16 dB

Maximum value of SAR (measured) = 0.279 mW/g

[Info: Interpolated medium parameters used for SAR evaluation!](#)

Middle Ch./Zoom Scan (5x5x7)/Cube 0: Measurement grid: dx=7.5mm, dy=7.5mm, dz=5mm

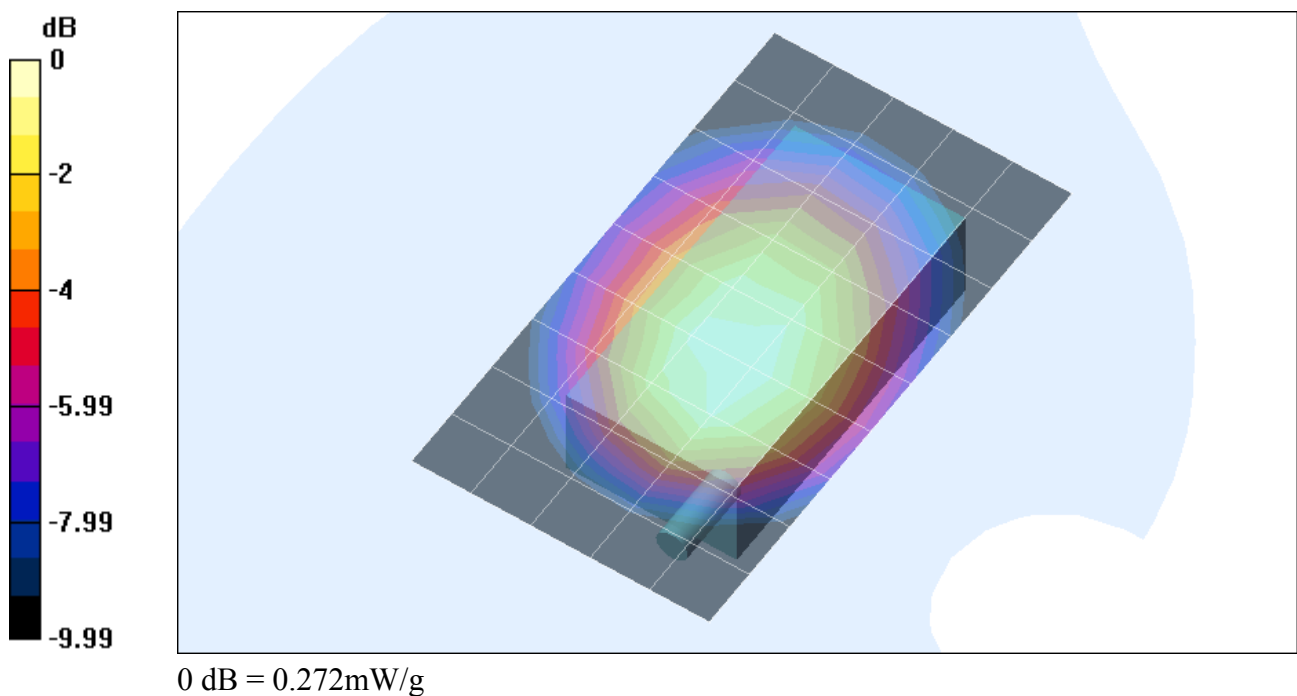
Reference Value = 14.3 V/m; Power Drift = -0.16 dB

Maximum value of SAR (measured) = 0.272 mW/g

Peak SAR (extrapolated) = 0.352 W/kg

SAR(1 g) = 0.254 mW/g; SAR(10 g) = 0.177 mW/g

[Info: Interpolated medium parameters used for SAR evaluation!](#)



Test Laboratory: Compliance Certification Services

File Name: [5_Body Worn.da4](#)

DUT: LG Electronics; Type: LG-PD820; Serial: #1

Program Name: 5_Body Worn

Ambient Temp.: 24.0 deg. C; Liquid Temp.: 23.0 deg. C

Communication System: CDMA Cellular Band; Frequency: 848.19 MHz; Duty Cycle: 1:1

Medium parameters used (interpolated): $f = 848.19$ MHz; $\sigma = 0.982$ mho/m; $\epsilon_r = 56.3$; $\rho = 1000$ kg/m³

Phantom section: Flat Section

DASY4 Configuration:

- Probe: ES3DV2 - SN3021; ConvF(6.3, 6.3, 6.3); Calibrated: 7/29/2003

- Sensor-Surface: 4mm (Mechanical Surface Detection)

- Electronics: DAE3 Sn500; Calibrated: 12/23/2003

- Phantom: SAM 1; Type: SAM 1; Serial: 1185

- Measurement SW: DASY4, V4.2 Build 44; Postprocessing SW: SEMCAD, V1.8 Build 112

High Ch./Area Scan (6x10x1): Measurement grid: dx=15mm, dy=15mm

Reference Value = 15.7 V/m; Power Drift = -0.2 dB

Maximum value of SAR (measured) = 0.386 mW/g

[Info: Interpolated medium parameters used for SAR evaluation!](#)

High Ch./Zoom Scan (5x5x7)/Cube 0: Measurement grid: dx=7.5mm, dy=7.5mm, dz=5mm

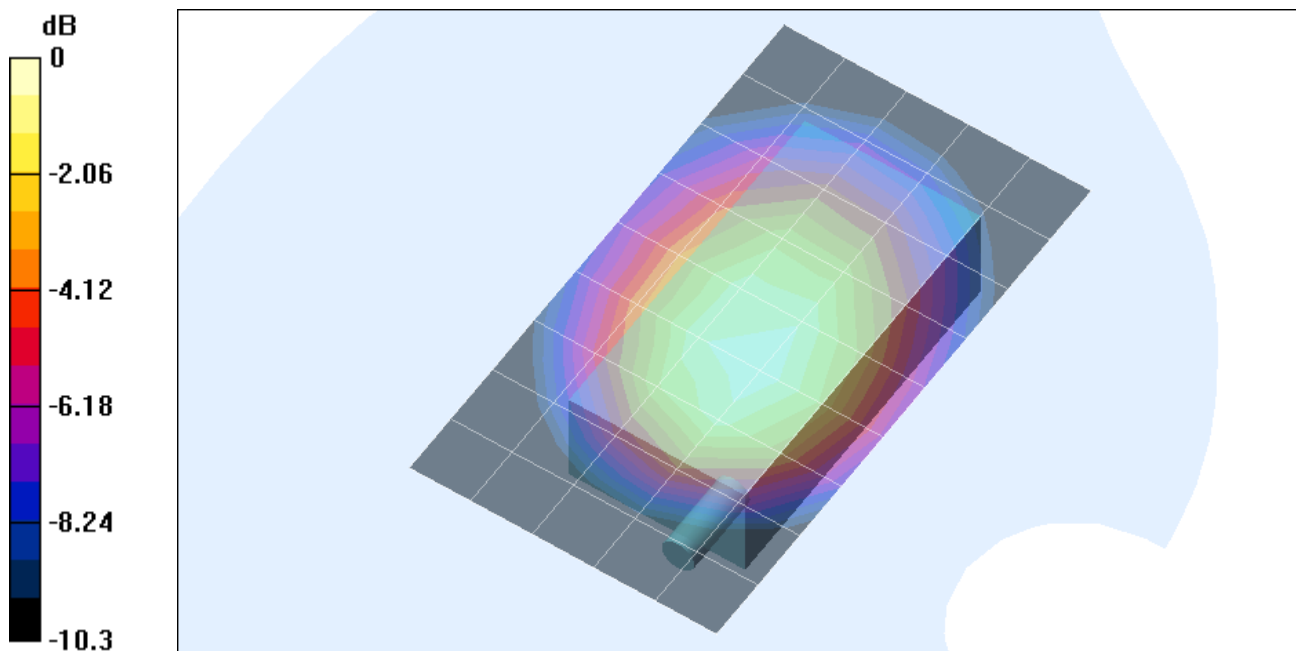
Reference Value = 15.7 V/m; Power Drift = -0.2 dB

Maximum value of SAR (measured) = 0.389 mW/g

Peak SAR (extrapolated) = 0.501 W/kg

SAR(1 g) = 0.364 mW/g; SAR(10 g) = 0.253 mW/g

[Info: Interpolated medium parameters used for SAR evaluation!](#)



0 dB = 0.389mW/g

Test Laboratory: Compliance Certification Services

File Name: [5_Body Worn.da4](#)

DUT: LG Electronics; Type: LG-PD820; Serial: #1

Program Name: 5_Body Worn

Communication System: CDMA Cellular Band; Frequency: 848.19 MHz; Duty Cycle: 1:1

Medium parameters used (interpolated): $f = 848.19$ MHz; $\sigma = 0.982$ mho/m; $\epsilon_r = 56.3$; $\rho = 1000$ kg/m³

Phantom section: Flat Section

High Ch./Z Scan (1x1x51): Measurement grid: dx=20mm, dy=20mm, dz=2mm

Reference Value = 15.7 V/m; Power Drift = -0.2 dB

Maximum value of SAR (measured) = 0.393 mW/g

[Info: Interpolated medium parameters used for SAR evaluation!](#)

