

SAR Plots

- Verification Plots
- SAR Test Plots

DT&C Co., Ltd.

DUT: Dipole 2450 MHz; Type: D2450V2; Serial: D2450V2 - SN:726

Communication System: CW (0); Frequency: 2450 MHz; Duty Cycle: 1:1
Medium parameters used: $f = 2450$ MHz; $\sigma = 1.974$ S/m; $\epsilon_r = 51.139$; $\rho = 1000$ kg/m³
Phantom section: Flat Section

DASY5 Configuration:

Probe: EX3DV4 - SN3933; ConvF(7.63, 7.63, 7.63); Calibrated: 9/29/2015; ; Electronics: DAE4 Sn1396
Phantom: ELI v5.0_2013_10_08; Type: QDIVA001BB; Serial: 1223
Measurement SW: DASY52, Version 52.8 (8); SEMCAD X Version 14.6.10 (7331)

Test Date: 2015-12-16; Ambient Temp: 20.9; Tissue Temp: 21.3

2450 MHz System Verification

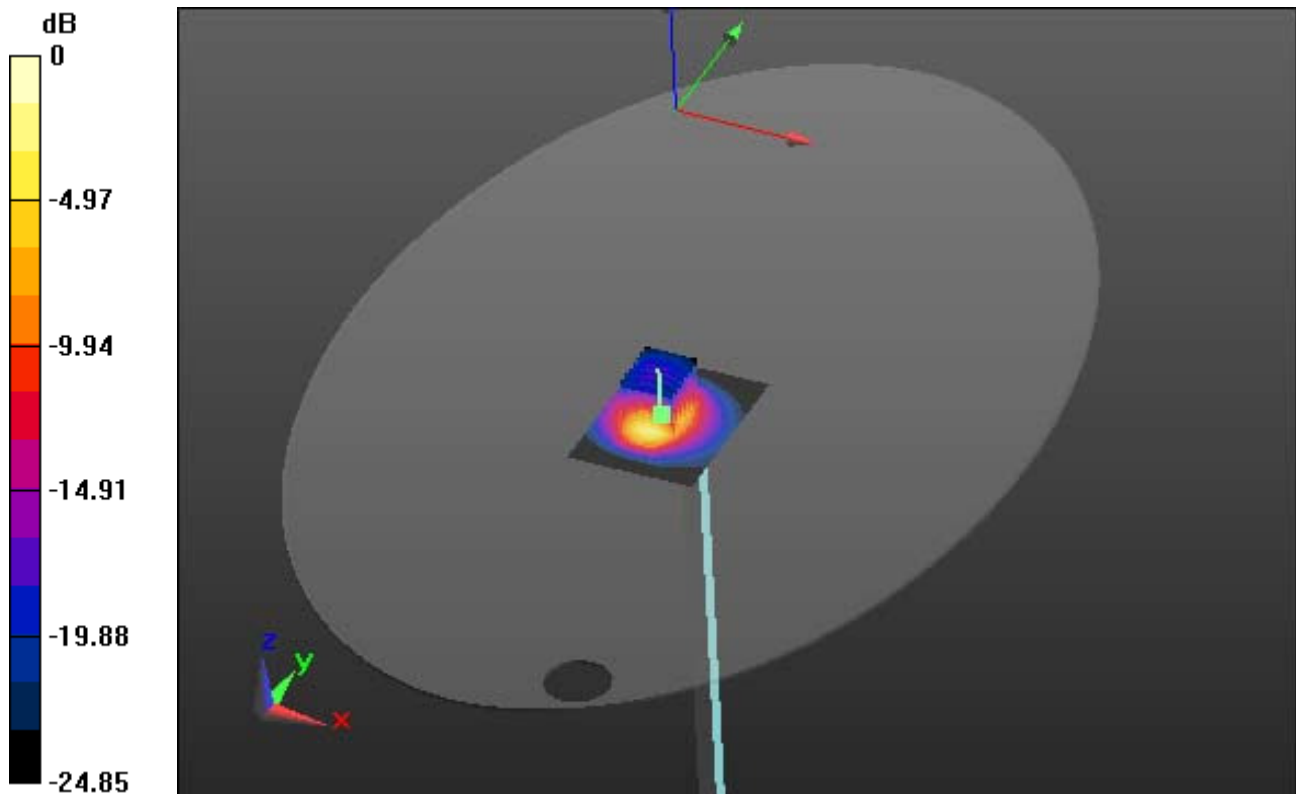
Area Scan (61x81x1): Interpolated grid: dx=12mm, dy=12mm

Zoom Scan (7x7x7)/Cube 0: Measurement grid: dx=5mm, dy=5mm, dz=5mm

Power Drift = 0.04 dB

Peak SAR (extrapolated) = 28.0 W/kg

SAR(1 g) = 12.9 W/kg; SAR(10 g) = 6.03 W/kg



0 dB = 20.2 W/kg

DT&C Co., Ltd.

DUT: Dipole 2450 MHz; Type: D2450V2; Serial: D2450V2 - SN:726

Communication System: CW (0); Frequency: 2450 MHz; Duty Cycle: 1:1
Medium parameters used: $f = 2450$ MHz; $\sigma = 1.974$ S/m; $\epsilon_r = 51.139$; $\rho = 1000$ kg/m³
Phantom section: Flat Section

DASY5 Configuration:

Probe: EX3DV4 - SN3933; ConvF(7.63, 7.63, 7.63); Calibrated: 9/29/2015; ; Electronics: DAE4 Sn1396
Phantom: ELI v5.0_2013_10_08; Type: QDIVA001BB; Serial: 1223
Measurement SW: DASY52, Version 52.8 (8); SEMCAD X Version 14.6.10 (7331)

Test Date: 2015-12-16; Ambient Temp: 20.9; Tissue Temp: 21.3

2450 MHz System Verification

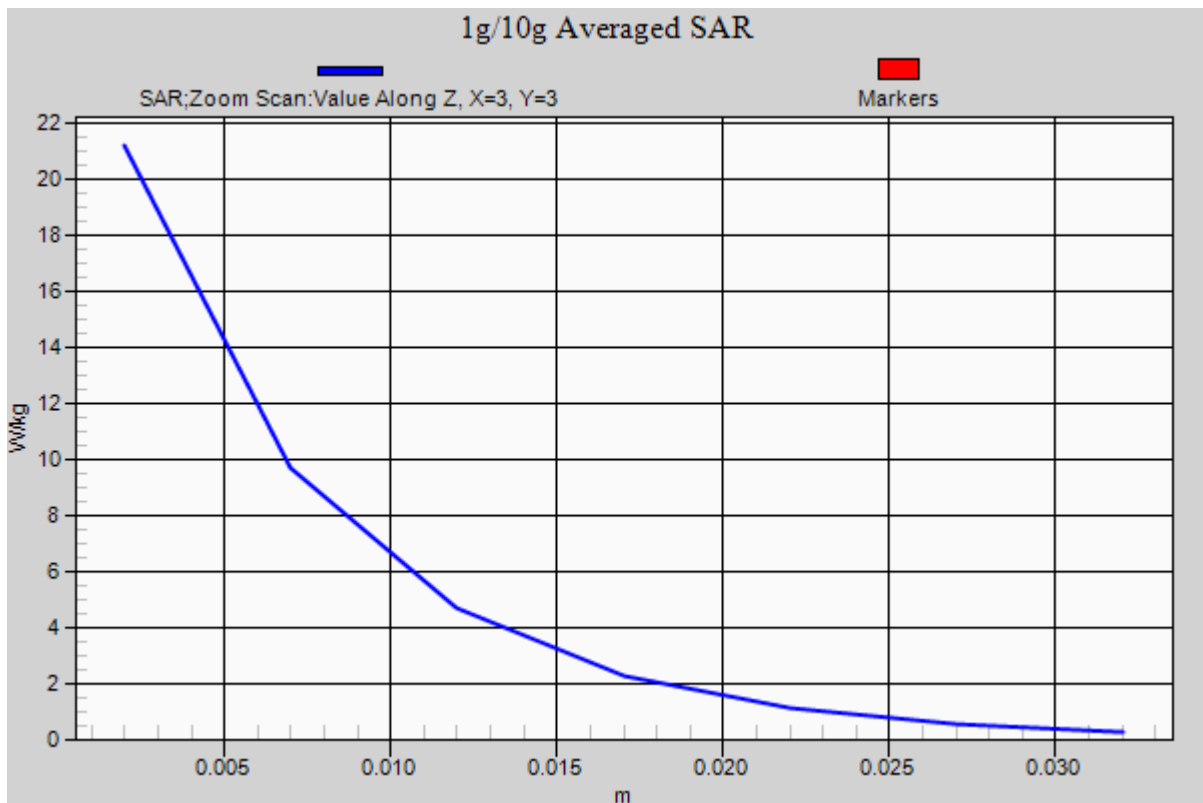
Area Scan (61x81x1): Interpolated grid: dx=12mm, dy=12mm

Zoom Scan (7x7x7)/Cube 0: Measurement grid: dx=5mm, dy=5mm, dz=5mm

Power Drift = 0.04 dB

Peak SAR (extrapolated) = 28.0 W/kg

SAR(1 g) = 12.9 W/kg; SAR(10 g) = 6.03 W/kg



DT&C Co., Ltd.

DUT: Dipole 5000 MHz; Type: D5GHzV2; Serial: D5GHzV2 - SN:1103

Communication System: CW (0); Frequency: 5200 MHz; Duty Cycle: 1:1
Medium parameters used: $f = 5200$ MHz; $\sigma = 5.244$ S/m; $\epsilon_r = 49.485$; $\rho = 1000$ kg/m³
Phantom section: Flat Section

DASY5 Configuration:

Probe: EX3DV4 - SN3933; ConvF(4.75, 4.75, 4.75); Calibrated: 9/29/2015; ; Electronics: DAE4 Sn1396
Phantom: ELI v5.0_2013_10_08; Type: QDIVA001BB; Serial: 1223
Measurement SW: DASY52, Version 52.8 (8); SEMCAD X Version 14.6.10 (7331)

Test Date: 2015-12-17; Ambient Temp: 20.5; Tissue Temp: 21.0

5200 MHz System Verification

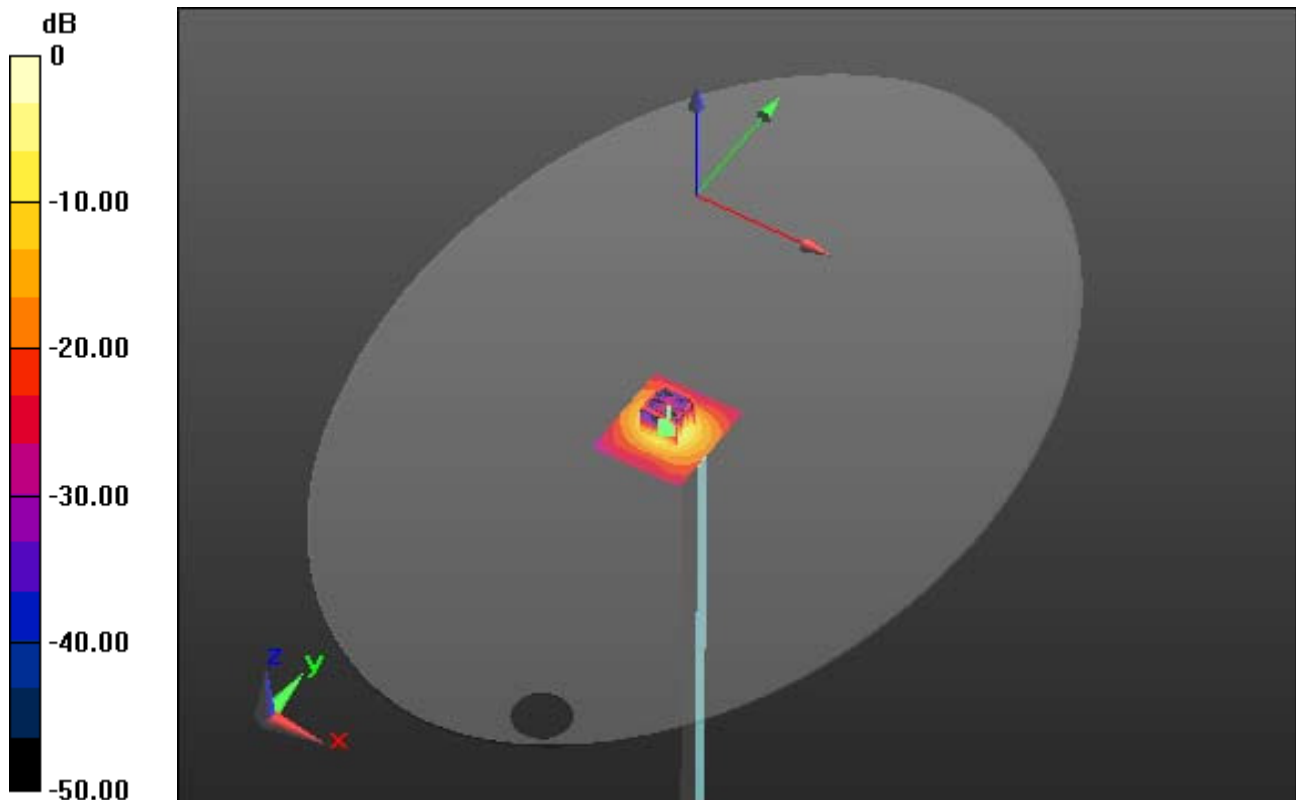
Area Scan (61x71x1): Interpolated grid: dx=10mm, dy=10mm

Zoom Scan (7x7x11)/Cube 0: Measurement grid: dx=4mm, dy=4mm, dz=2mm

Power Drift = -0.08 dB

Peak SAR (extrapolated) = 35.0 W/kg

SAR(1 g) = 7.79 W/kg; SAR(10 g) = 2.17 W/kg



0 dB = 15.4 W/kg

DT&C Co., Ltd.

DUT: Dipole 5000 MHz; Type: D5GHzV2; Serial: D5GHzV2 - SN:1103

Communication System: CW (0); Frequency: 5200 MHz; Duty Cycle: 1:1
Medium parameters used: $f = 5200$ MHz; $\sigma = 5.244$ S/m; $\epsilon_r = 49.485$; $\rho = 1000$ kg/m³
Phantom section: Flat Section

DASY5 Configuration:

Probe: EX3DV4 - SN3933; ConvF(4.75, 4.75, 4.75); Calibrated: 9/29/2015; ; Electronics: DAE4 Sn1396
Phantom: ELI v5.0_2013_10_08; Type: QDIVA001BB; Serial: 1223
Measurement SW: DASY52, Version 52.8 (8); SEMCAD X Version 14.6.10 (7331)

Test Date: 2015-12-17; Ambient Temp: 20.5; Tissue Temp: 21.0

5200 MHz System Verification

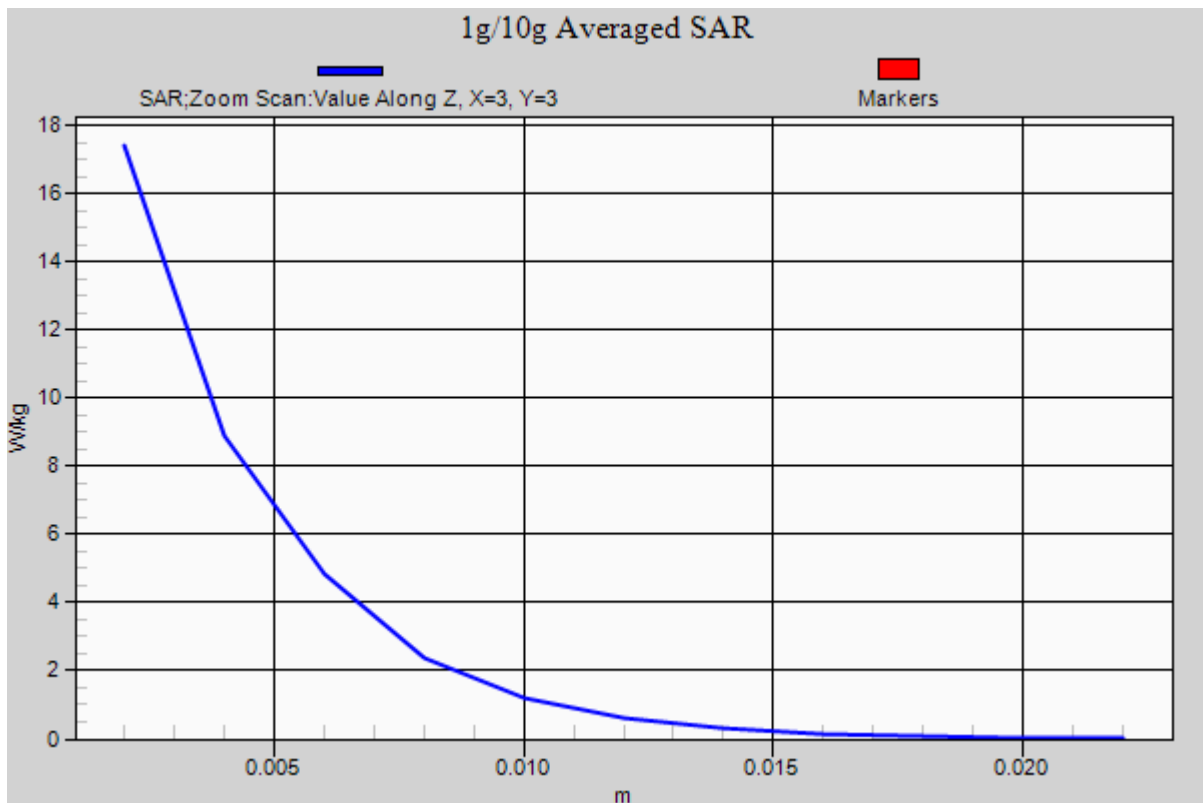
Area Scan (61x71x1): Interpolated grid: dx=10mm, dy=10mm

Zoom Scan (7x7x11)/Cube 0: Measurement grid: dx=4mm, dy=4mm, dz=2mm

Power Drift = -0.08 dB

Peak SAR (extrapolated) = 35.0 W/kg

SAR(1 g) = 7.79 W/kg; SAR(10 g) = 2.17 W/kg



DT&C Co., Ltd.

DUT: Dipole 5000 MHz; Type: D5GHzV2; Serial: D5GHzV2 - SN:1103

Communication System: CW (0); Frequency: 5300 MHz; Duty Cycle: 1:1
Medium parameters used: $f = 5300$ MHz; $\sigma = 5.378$ S/m; $\epsilon_r = 49.307$; $\rho = 1000$ kg/m³
Phantom section: Flat Section

DASY5 Configuration:

Probe: EX3DV4 - SN3933; ConvF(4.65, 4.65, 4.65); Calibrated: 9/29/2015; ; Electronics: DAE4 Sn1396
Phantom: ELI v5.0_2013_10_08; Type: QDIVA001BB; Serial: 1223
Measurement SW: DASY52, Version 52.8 (8); SEMCAD X Version 14.6.10 (7331)

Test Date: 2015-12-17; Ambient Temp: 20.5; Tissue Temp: 21.0

5300 MHz System Verification

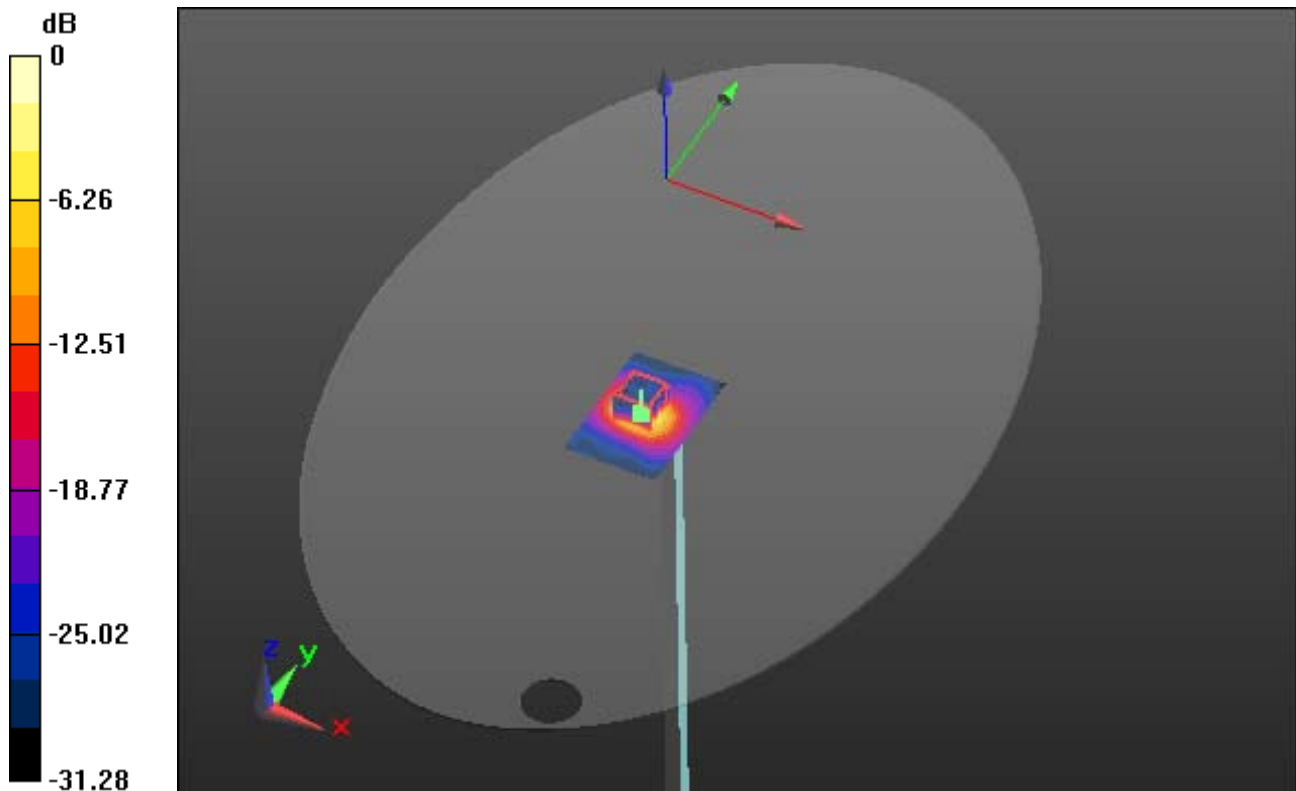
Area Scan (61x91x1): Interpolated grid: dx=10mm, dy=10mm

Zoom Scan (7x7x11)/Cube 0: Measurement grid: dx=4mm, dy=4mm, dz=2mm

Power Drift = 0.09 dB

Peak SAR (extrapolated) = 36.1 W/kg

SAR(1 g) = 7.22 W/kg; SAR(10 g) = 2.06 W/kg



0 dB = 15.3 W/kg

DT&C Co., Ltd.

DUT: Dipole 5000 MHz; Type: D5GHzV2; Serial: D5GHzV2 - SN:1103

Communication System: CW (0); Frequency: 5300 MHz; Duty Cycle: 1:1
Medium parameters used: $f = 5300$ MHz; $\sigma = 5.378$ S/m; $\epsilon_r = 49.307$; $\rho = 1000$ kg/m³
Phantom section: Flat Section

DASY5 Configuration:

Probe: EX3DV4 - SN3933; ConvF(4.65, 4.65, 4.65); Calibrated: 9/29/2015; ; Electronics: DAE4 Sn1396
Phantom: ELI v5.0_2013_10_08; Type: QDIVA001BB; Serial: 1223
Measurement SW: DASY52, Version 52.8 (8); SEMCAD X Version 14.6.10 (7331)

Test Date: 2015-12-17; Ambient Temp: 20.5; Tissue Temp: 21.0

5300 MHz System Verification

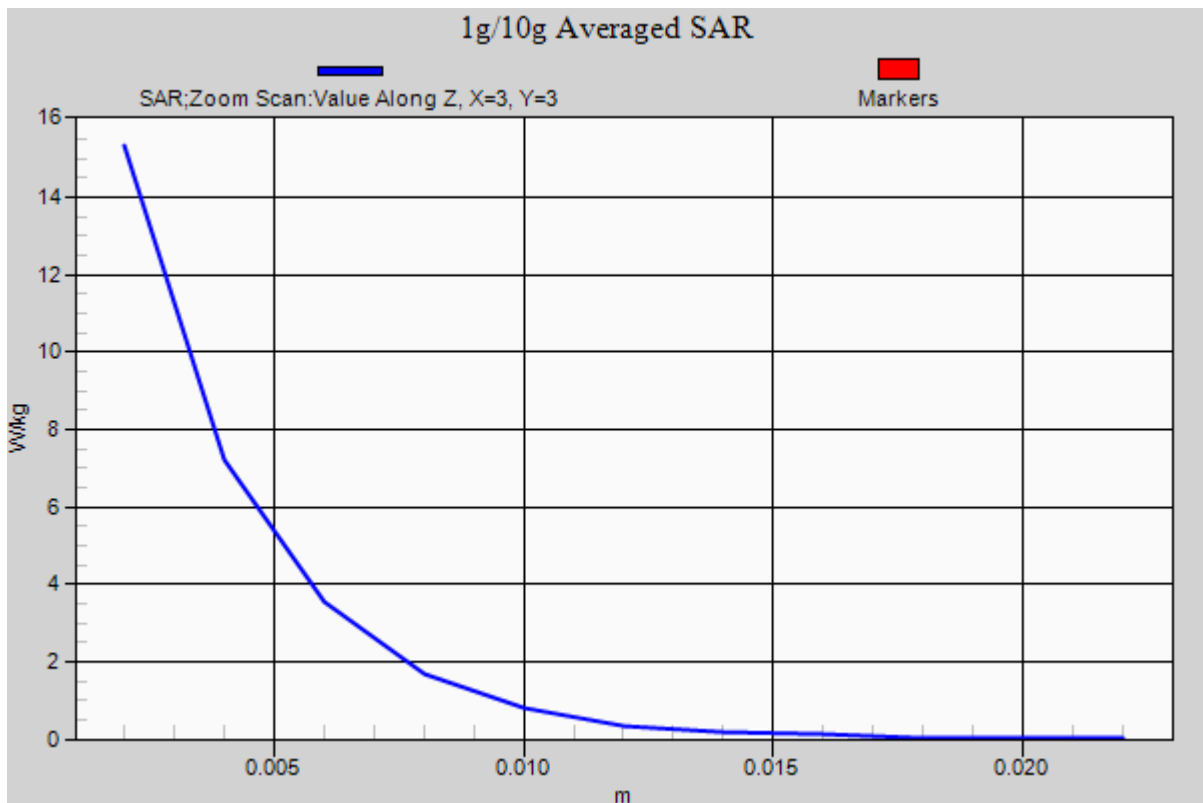
Area Scan (61x91x1): Interpolated grid: dx=10mm, dy=10mm

Zoom Scan (7x7x11)/Cube 0: Measurement grid: dx=4mm, dy=4mm, dz=2mm

Power Drift = 0.09 dB

Peak SAR (extrapolated) = 36.1 W/kg

SAR(1 g) = 7.22 W/kg; SAR(10 g) = 2.06 W/kg



DT&C Co., Ltd.

DUT: Dipole 5000 MHz; Type: D5GHzV2; Serial: D5GHzV2 - SN:1103

Communication System: CW (0); Frequency: 5500 MHz; Duty Cycle: 1:1
Medium parameters used: $f = 5500$ MHz; $\sigma = 5.594$ S/m; $\epsilon_r = 48.319$; $\rho = 1000$ kg/m³
Phantom section: Flat Section

DASY5 Configuration:

Probe: EX3DV4 - SN3933; ConvF(4.26, 4.26, 4.26); Calibrated: 9/29/2015; ; Electronics: DAE4 Sn1396
Phantom: ELI v5.0_2013_10_08; Type: QDIVA001BB; Serial: 1223
Measurement SW: DASY52, Version 52.8 (8); SEMCAD X Version 14.6.10 (7331)

Test Date: 2015-12-18; Ambient Temp: 20.7; Tissue Temp: 20.9

5500 MHz System Verification

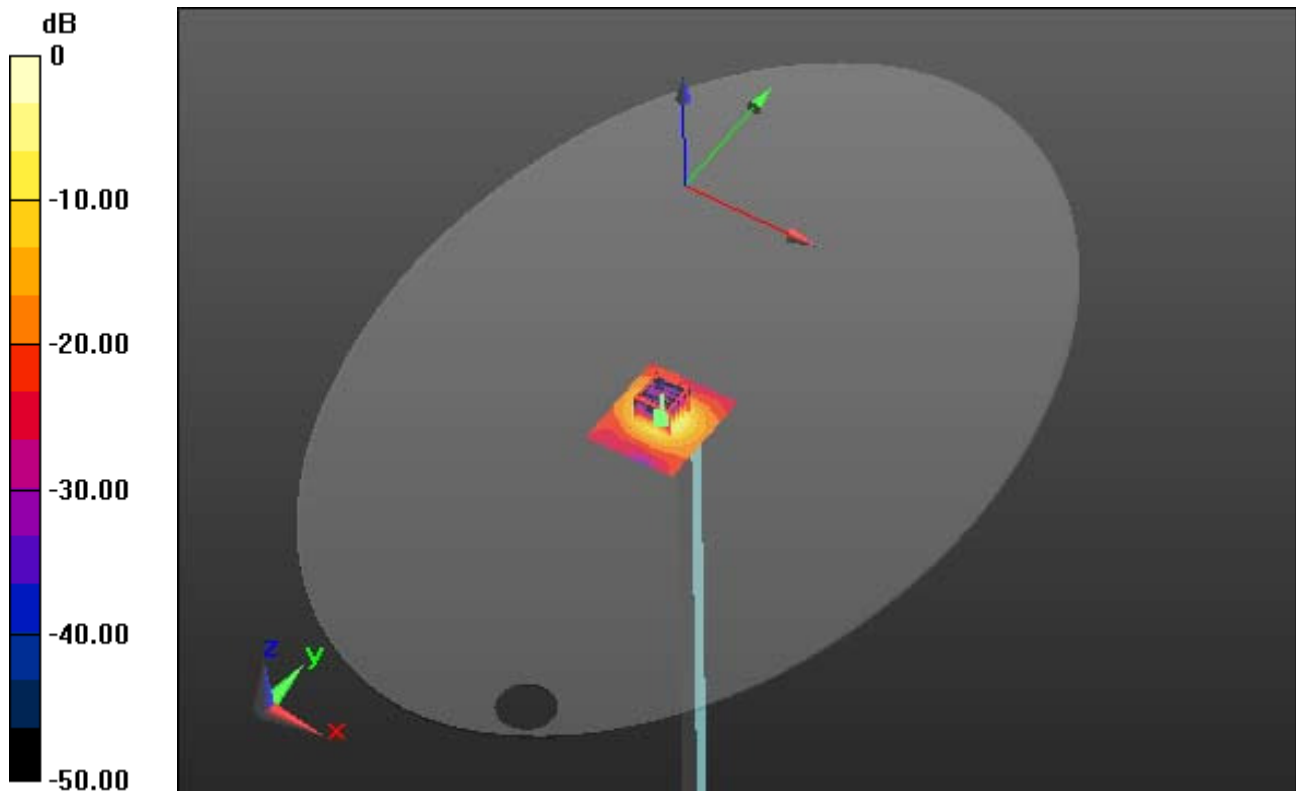
Area Scan (61x71x1): Interpolated grid: dx=10mm, dy=10mm

Zoom Scan (7x7x11)/Cube 0: Measurement grid: dx=4mm, dy=4mm, dz=2mm

Power Drift = 0.01 dB

Peak SAR (extrapolated) = 36.2 W/kg

SAR(1 g) = 7.61 W/kg; SAR(10 g) = 2.15 W/kg



0 dB = 16.1 W/kg

DT&C Co., Ltd.

DUT: Dipole 5000 MHz; Type: D5GHzV2; Serial: D5GHzV2 - SN:1103

Communication System: CW (0); Frequency: 5500 MHz; Duty Cycle: 1:1
Medium parameters used: $f = 5500$ MHz; $\sigma = 5.594$ S/m; $\epsilon_r = 48.319$; $\rho = 1000$ kg/m³
Phantom section: Flat Section

DASY5 Configuration:

Probe: EX3DV4 - SN3933; ConvF(4.26, 4.26, 4.26); Calibrated: 9/29/2015; ; Electronics: DAE4 Sn1396
Phantom: ELI v5.0_2013_10_08; Type: QDIVA001BB; Serial: 1223
Measurement SW: DASY52, Version 52.8 (8); SEMCAD X Version 14.6.10 (7331)

Test Date: 2015-12-18; Ambient Temp: 20.7; Tissue Temp: 20.9

5500 MHz System Verification

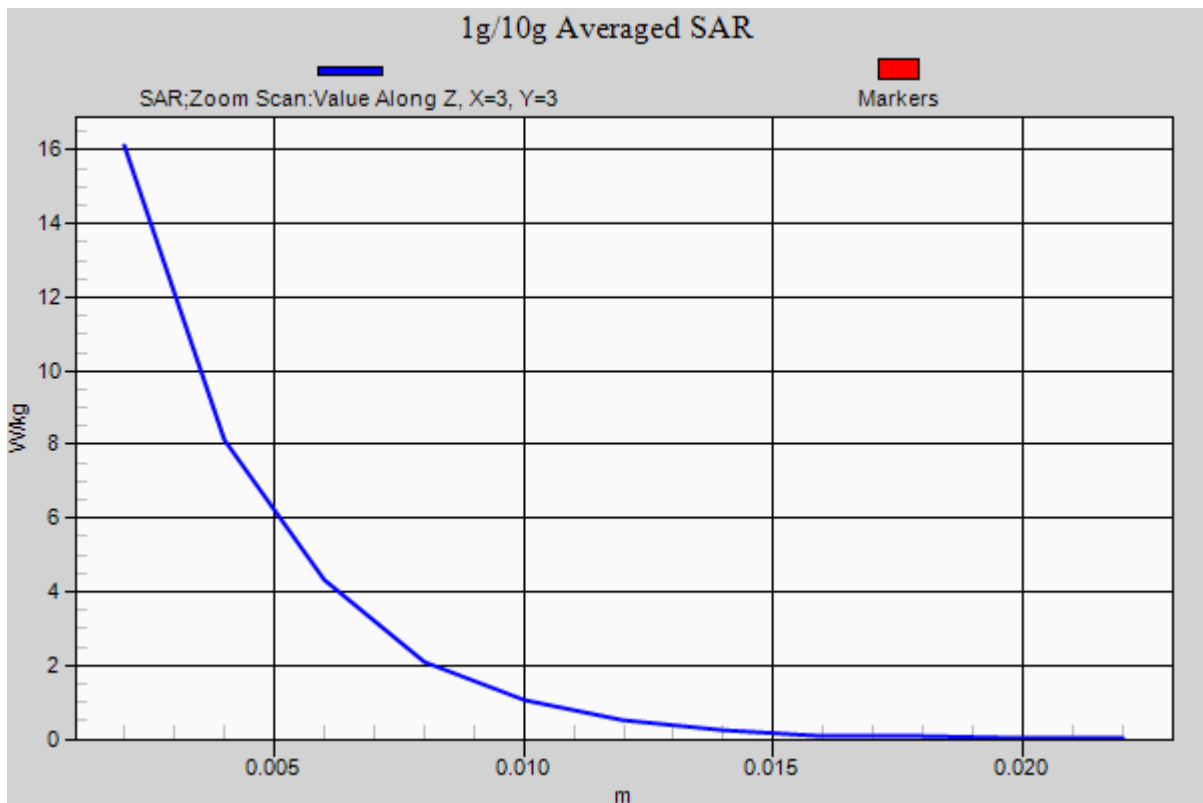
Area Scan (61x71x1): Interpolated grid: dx=10mm, dy=10mm

Zoom Scan (7x7x11)/Cube 0: Measurement grid: dx=4mm, dy=4mm, dz=2mm

Power Drift = 0.01 dB

Peak SAR (extrapolated) = 36.2 W/kg

SAR(1 g) = 7.61 W/kg; SAR(10 g) = 2.15 W/kg



DT&C Co., Ltd.

DUT: Dipole 5000 MHz; Type: D5GHzV2; Serial: D5GHzV2 - SN:1103

Communication System: CW (0); Frequency: 5600 MHz; Duty Cycle: 1:1
Medium parameters used: $f = 5600$ MHz; $\sigma = 5.733$ S/m; $\epsilon_r = 48.145$; $\rho = 1000$ kg/m³
Phantom section: Flat Section

DASY5 Configuration:

Probe: EX3DV4 - SN3933; ConvF(3.98, 3.98, 3.98); Calibrated: 9/29/2015; ; Electronics: DAE4 Sn1396
Phantom: ELI v5.0_2013_10_08; Type: QDIVA001BB; Serial: 1223
Measurement SW: DASY52, Version 52.8 (8); SEMCAD X Version 14.6.10 (7331)

Test Date: 2015-12-18; Ambient Temp: 20.7; Tissue Temp: 20.9

5600 MHz System Verification

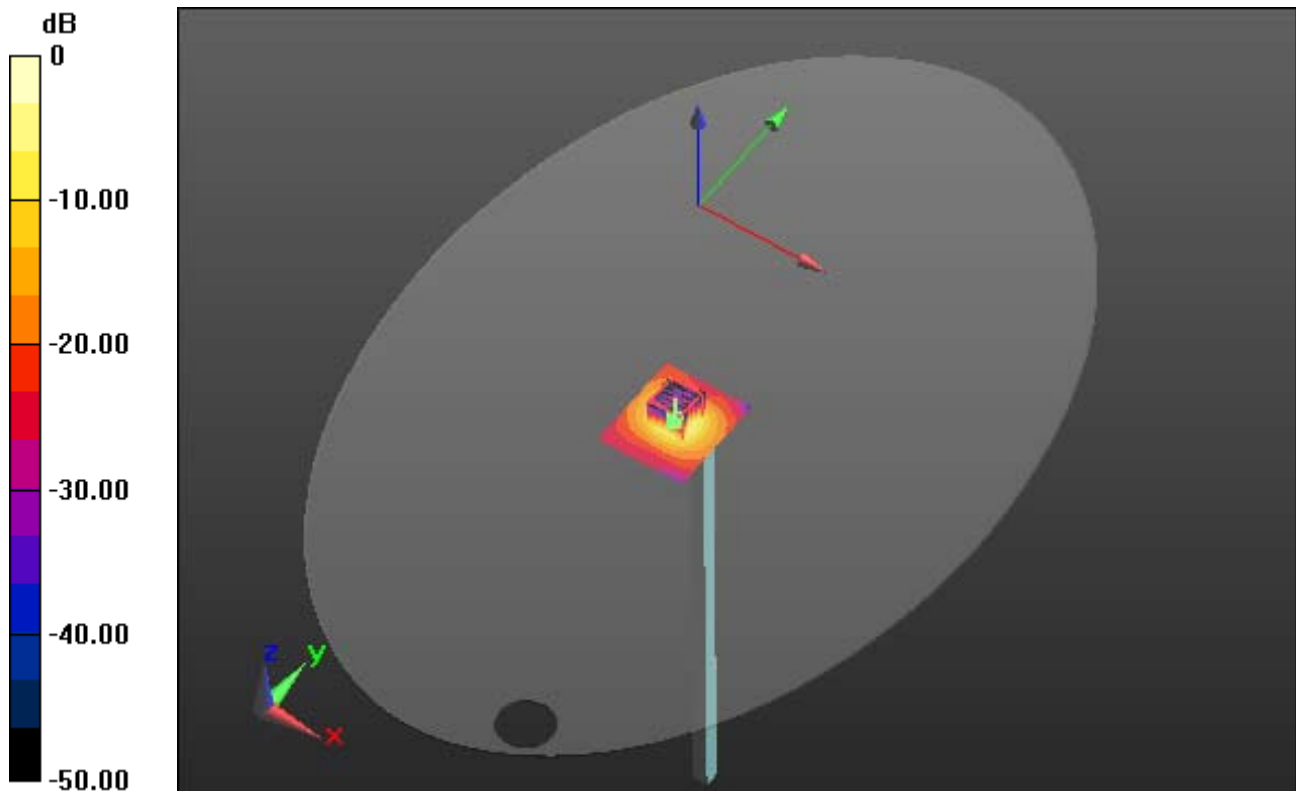
Area Scan (61x71x1): Interpolated grid: dx=10mm, dy=10mm

Zoom Scan (7x7x11)/Cube 0: Measurement grid: dx=4mm, dy=4mm, dz=2mm

Power Drift = 0.08 dB

Peak SAR (extrapolated) = 37.2 W/kg

SAR(1 g) = 8.06 W/kg; SAR(10 g) = 2.2 W/kg



0 dB = 17.2 W/kg

DT&C Co., Ltd.

DUT: Dipole 5000 MHz; Type: D5GHzV2; Serial: D5GHzV2 - SN:1103

Communication System: CW (0); Frequency: 5600 MHz; Duty Cycle: 1:1
Medium parameters used: $f = 5600$ MHz; $\sigma = 5.733$ S/m; $\epsilon_r = 48.145$; $\rho = 1000$ kg/m³
Phantom section: Flat Section

DASY5 Configuration:

Probe: EX3DV4 - SN3933; ConvF(3.98, 3.98, 3.98); Calibrated: 9/29/2015; ; Electronics: DAE4 Sn1396
Phantom: ELI v5.0_2013_10_08; Type: QDIVA001BB; Serial: 1223
Measurement SW: DASY52, Version 52.8 (8); SEMCAD X Version 14.6.10 (7331)

Test Date: 2015-12-18; Ambient Temp: 20.7; Tissue Temp: 20.9

5600 MHz System Verification

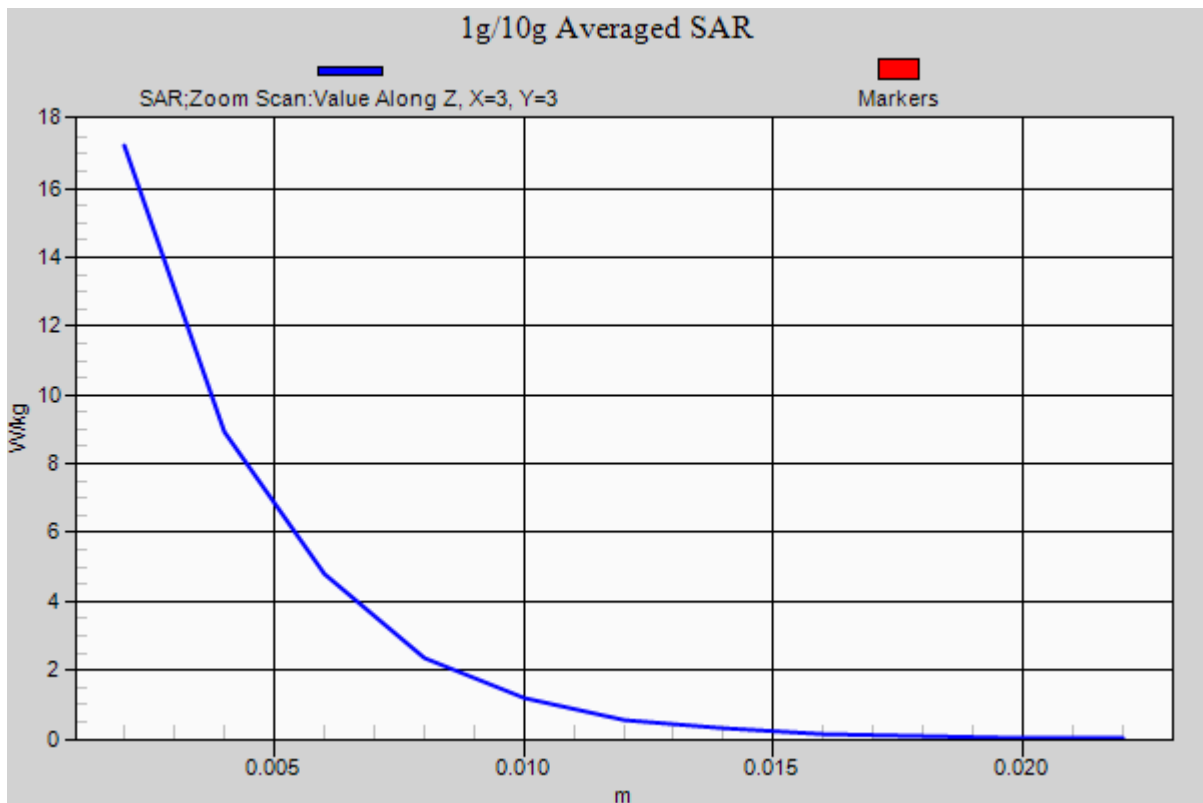
Area Scan (61x71x1): Interpolated grid: dx=10mm, dy=10mm

Zoom Scan (7x7x11)/Cube 0: Measurement grid: dx=4mm, dy=4mm, dz=2mm

Power Drift = 0.08 dB

Peak SAR (extrapolated) = 37.2 W/kg

SAR(1 g) = 8.06 W/kg; SAR(10 g) = 2.2 W/kg



DT&C Co., Ltd.

DUT: Dipole 5000 MHz; Type: D5GHzV2; Serial: D5GHzV2 - SN:1103

Communication System: CW (0); Frequency: 5800 MHz; Duty Cycle: 1:1
Medium parameters used: $f = 5800$ MHz; $\sigma = 6.013$ S/m; $\epsilon_r = 47.81$; $\rho = 1000$ kg/m³
Phantom section: Flat Section

DASY5 Configuration:

Probe: EX3DV4 - SN3933; ConvF(4.07, 4.07, 4.07); Calibrated: 9/29/2015; ; Electronics: DAE4 Sn1396
Phantom: ELI v5.0_2013_10_08; Type: QDIVA001BB; Serial: 1223
Measurement SW: DASY52, Version 52.8 (8); SEMCAD X Version 14.6.10 (7331)

Test Date: 2015-12-18; Ambient Temp: 20.7; Tissue Temp: 20.9

5800 MHz System Verification

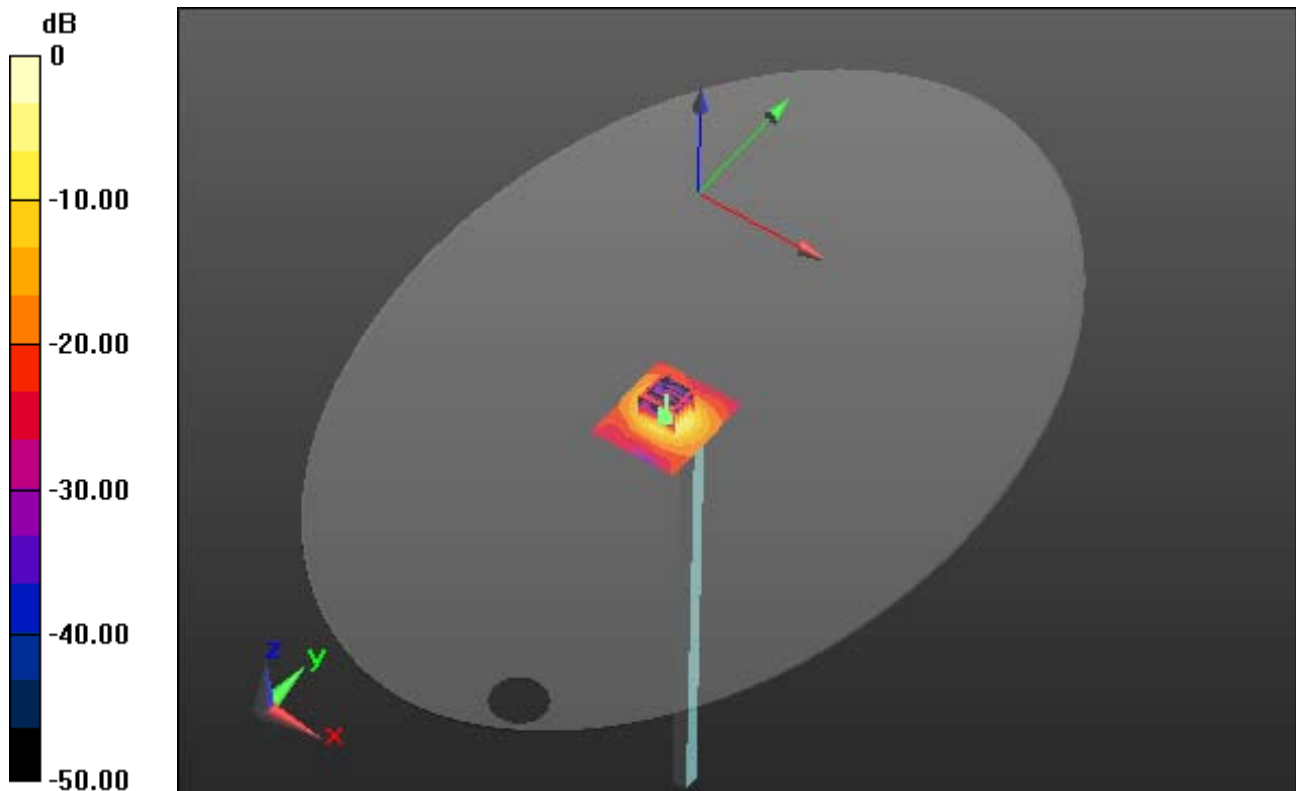
Area Scan (61x71x1): Interpolated grid: dx=10mm, dy=10mm

Zoom Scan (7x7x11)/Cube 0: Measurement grid: dx=4mm, dy=4mm, dz=2mm

Power Drift = 0.01 dB

Peak SAR (extrapolated) = 34.9 W/kg

SAR(1 g) = 7.8 W/kg; SAR(10 g) = 2.12 W/kg



0 dB = 16.4 W/kg

DT&C Co., Ltd.

DUT: Dipole 5000 MHz; Type: D5GHzV2; Serial: D5GHzV2 - SN:1103

Communication System: CW (0); Frequency: 5800 MHz; Duty Cycle: 1:1
Medium parameters used: $f = 5800$ MHz; $\sigma = 6.013$ S/m; $\epsilon_r = 47.81$; $\rho = 1000$ kg/m³
Phantom section: Flat Section

DASY5 Configuration:

Probe: EX3DV4 - SN3933; ConvF(4.07, 4.07, 4.07); Calibrated: 9/29/2015; ; Electronics: DAE4 Sn1396
Phantom: ELI v5.0_2013_10_08; Type: QDIVA001BB; Serial: 1223
Measurement SW: DASY52, Version 52.8 (8); SEMCAD X Version 14.6.10 (7331)

Test Date: 2015-12-18; Ambient Temp: 20.7; Tissue Temp: 20.9

5800 MHz System Verification

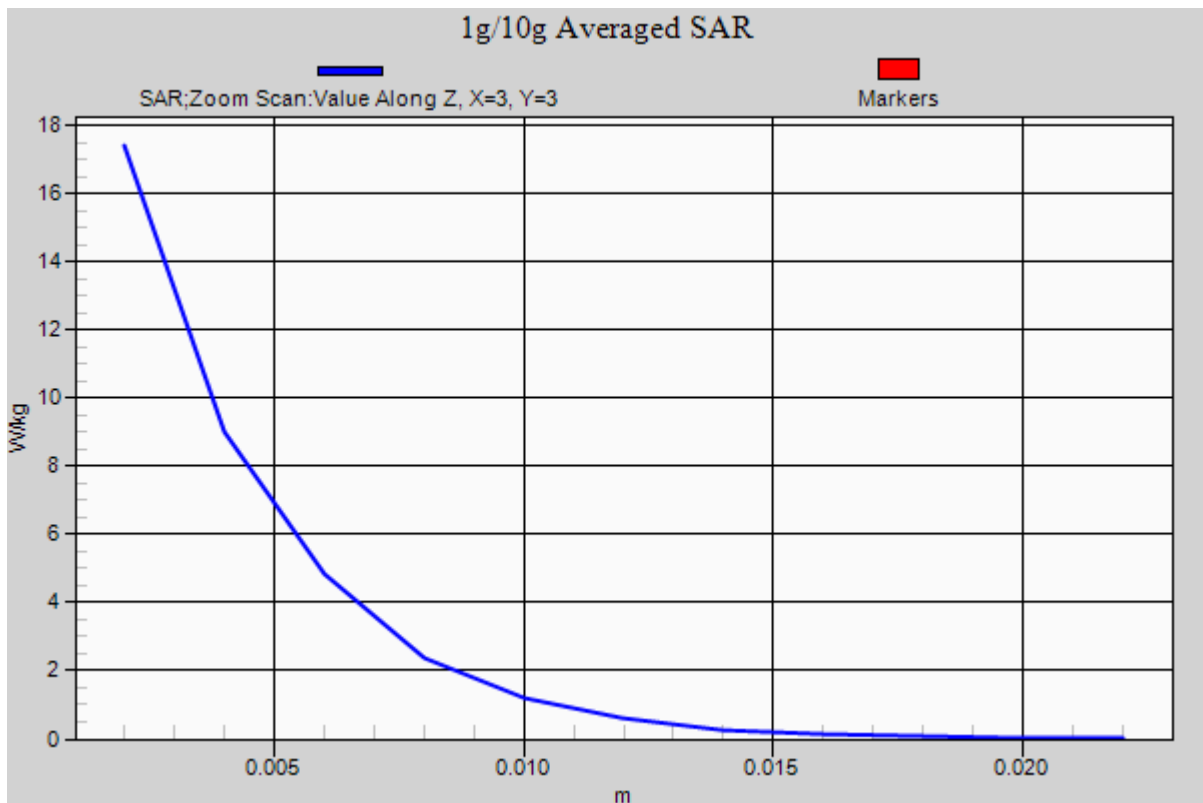
Area Scan (61x71x1): Interpolated grid: dx=10mm, dy=10mm

Zoom Scan (7x7x11)/Cube 0: Measurement grid: dx=4mm, dy=4mm, dz=2mm

Power Drift = 0.01 dB

Peak SAR (extrapolated) = 34.9 W/kg

SAR(1 g) = 7.8 W/kg; SAR(10 g) = 2.12 W/kg



DT&C Co., Ltd.

DUT: LG15Z96; Type: Notebook Computer

Communication System: W-LAN (0); Frequency: 2437 MHz; Duty Cycle: 1:1
Medium parameters used: $f = 2437$ MHz; $\sigma = 1.959$ S/m; $\epsilon_r = 51.176$; $\rho = 1000$ kg/m³
Phantom section: Flat Section

DASY5 Configuration:

Probe: EX3DV4 - SN3933; ConvF(7.63, 7.63, 7.63); Calibrated: 9/29/2015; Electronics: DAE4 Sn1396
Phantom: ELI v5.0_2013_10_08; Type: QDIVA001BB; Serial: 1223
Measurement SW: DASY52, Version 52.8 (8); SEMCAD X Version 14.6.10 (7331)

Test Date: 2015-12-16; Ambient Temp; 20.9; Tissue Temp: 21.3

Touch from Body, Rear, W-LAN(2.4G 802.11b) Ch. 6, Ant Internal, Main

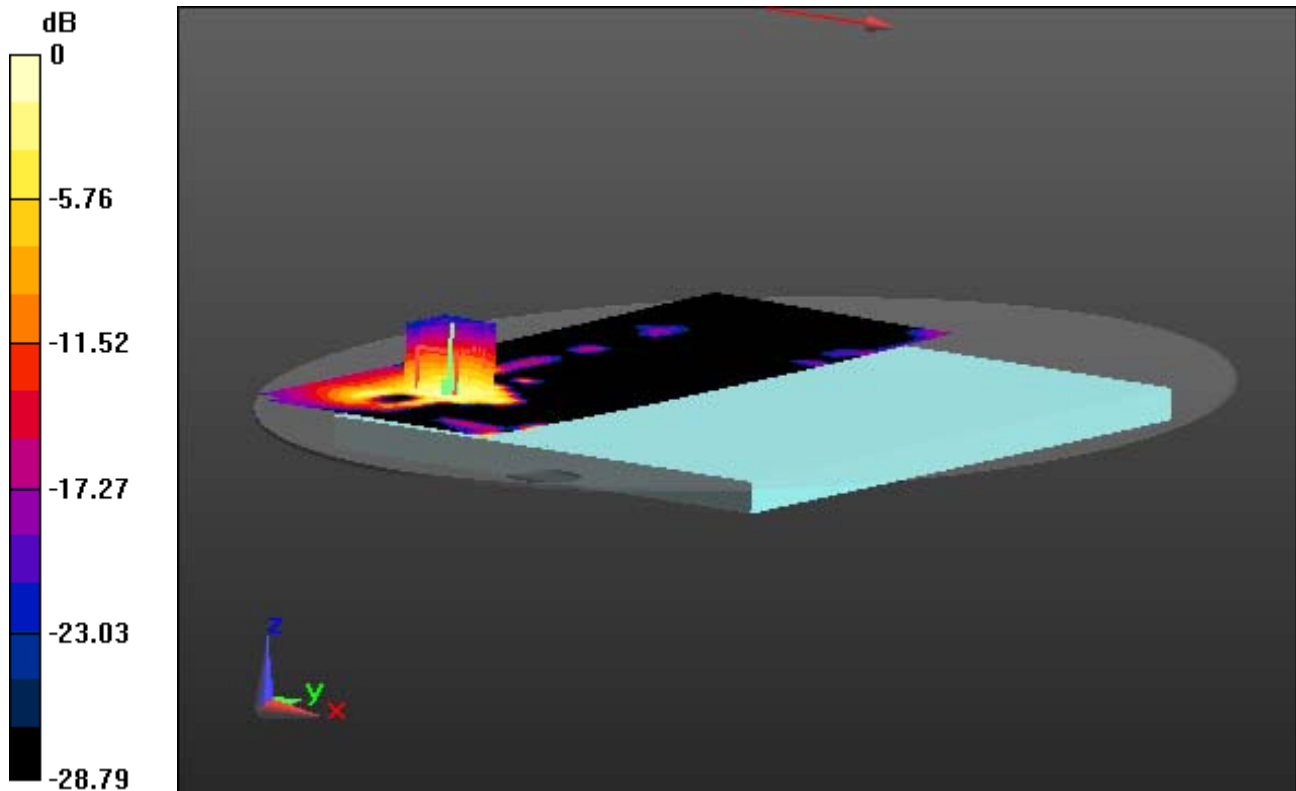
Area Scan (111x331x1): Interpolated grid: dx=12mm, dy=12mm

Zoom Scan (7x7x7)/Cube 0: Measurement grid: dx=5mm, dy=5mm, dz=5mm

Power Drift = -0.08 dB

Peak SAR (extrapolated) = 0.367 W/kg

SAR(1 g) = 0.165 W/kg; SAR(10 g) = 0.081 W/kg



0 dB = 0.254 W/kg

DT&C Co., Ltd.

DUT: LG15Z96; Type: Notebook Computer

Communication System: W-LAN (0); Frequency: 2437 MHz; Duty Cycle: 1:1
Medium parameters used: $f = 2437$ MHz; $\sigma = 1.959$ S/m; $\epsilon_r = 51.176$; $\rho = 1000$ kg/m³
Phantom section: Flat Section

DASY5 Configuration:

Probe: EX3DV4 - SN3933; ConvF(7.63, 7.63, 7.63); Calibrated: 9/29/2015; Electronics: DAE4 Sn1396
Phantom: ELI v5.0_2013_10_08; Type: QDIVA001BB; Serial: 1223
Measurement SW: DASY52, Version 52.8 (8); SEMCAD X Version 14.6.10 (7331)

Test Date: 2015-12-16; Ambient Temp; 20.9; Tissue Temp: 21.3

Touch from Body, Rear, W-LAN(2.4G 802.11b) Ch. 6, Ant Internal, Main

With Enlarge Plot image

Area Scan (111x331x1): Interpolated grid: dx=12mm, dy=12mm

Zoom Scan (7x7x7)/Cube 0: Measurement grid: dx=5mm, dy=5mm, dz=5mm

Power Drift = -0.08 dB

Peak SAR (extrapolated) = 0.367 W/kg

SAR(1 g) = 0.165 W/kg; SAR(10 g) = 0.081 W/kg

The figure is a 2D color plot representing the SAR field distribution. The vertical axis on the left is labeled 'dB' and ranges from 0 at the top to -28.79 at the bottom, with intermediate markers at -5.76, -11.52, -17.27, and -23.03. The plot area shows a complex field of colors, with the highest intensity (yellow/red) concentrated in a central region. A grid of vertical lines is overlaid on this central region. At the bottom of the plot, a coordinate system is shown with a red 'x' axis pointing left, a green 'y' axis pointing right, and a blue 'z' axis pointing up. A red arrow points downwards from the center of the plot, and a green arrow points to the right.

0 dB = 0.254 W/kg

A1

DT&C Co., Ltd.

DUT: LG15Z96; Type: Notebook Computer

Communication System: W-LAN (0); Frequency: 2437 MHz; Duty Cycle: 1:1
Medium parameters used: $f = 2437$ MHz; $\sigma = 1.959$ S/m; $\epsilon_r = 51.176$; $\rho = 1000$ kg/m³
Phantom section: Flat Section

DASY5 Configuration:

Probe: EX3DV4 - SN3933; ConvF(7.63, 7.63, 7.63); Calibrated: 9/29/2015; Electronics: DAE4 Sn1396
Phantom: ELI v5.0_2013_10_08; Type: QDIVA001BB; Serial: 1223
Measurement SW: DASY52, Version 52.8 (8); SEMCAD X Version 14.6.10 (7331)

Test Date: 2015-12-16; Ambient Temp; 20.9; Tissue Temp: 21.3

Touch from Body, Rear, W-LAN(2.4G 802.11b) Ch. 6, Ant Internal, Main

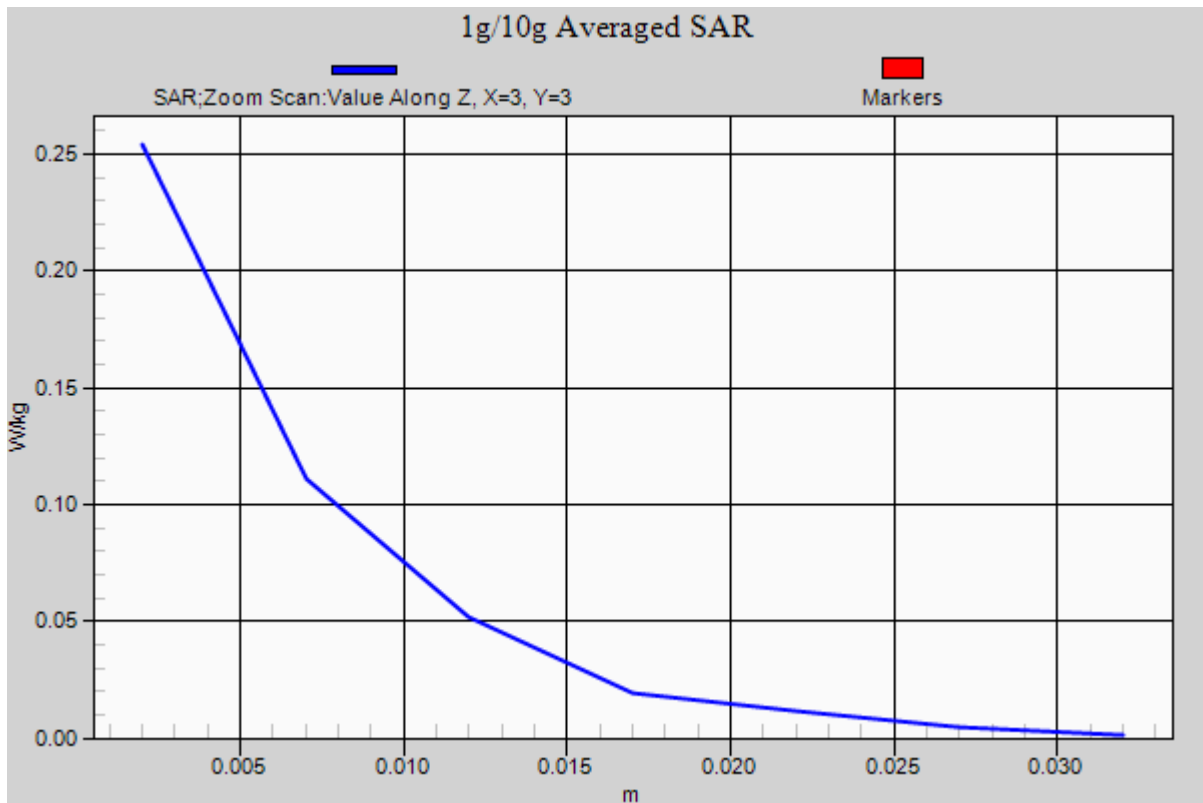
Area Scan (111x331x1): Interpolated grid: dx=12mm, dy=12mm

Zoom Scan (7x7x7)/Cube 0: Measurement grid: dx=5mm, dy=5mm, dz=5mm

Power Drift = -0.08 dB

Peak SAR (extrapolated) = 0.367 W/kg

SAR(1 g) = 0.165 W/kg; SAR(10 g) = 0.081 W/kg



DT&C Co., Ltd.

DUT: LG15Z96; Type: Notebook Computer

Communication System: W-LAN (0); Frequency: 2437 MHz; Duty Cycle: 1:1
Medium parameters used: $f = 2437$ MHz; $\sigma = 1.959$ S/m; $\epsilon_r = 51.176$; $\rho = 1000$ kg/m³
Phantom section: Flat Section

DASY5 Configuration:

Probe: EX3DV4 - SN3933; ConvF(7.63, 7.63, 7.63); Calibrated: 9/29/2015; Electronics: DAE4 Sn1396
Phantom: ELI v5.0_2013_10_08; Type: QDIVA001BB; Serial: 1223
Measurement SW: DASY52, Version 52.8 (8); SEMCAD X Version 14.6.10 (7331)

Test Date: 2015-12-16; Ambient Temp; 20.9; Tissue Temp: 21.3

Touch from Body, Rear, W-LAN(2.4G 802.11b) Ch. 6, Ant Internal, Aux

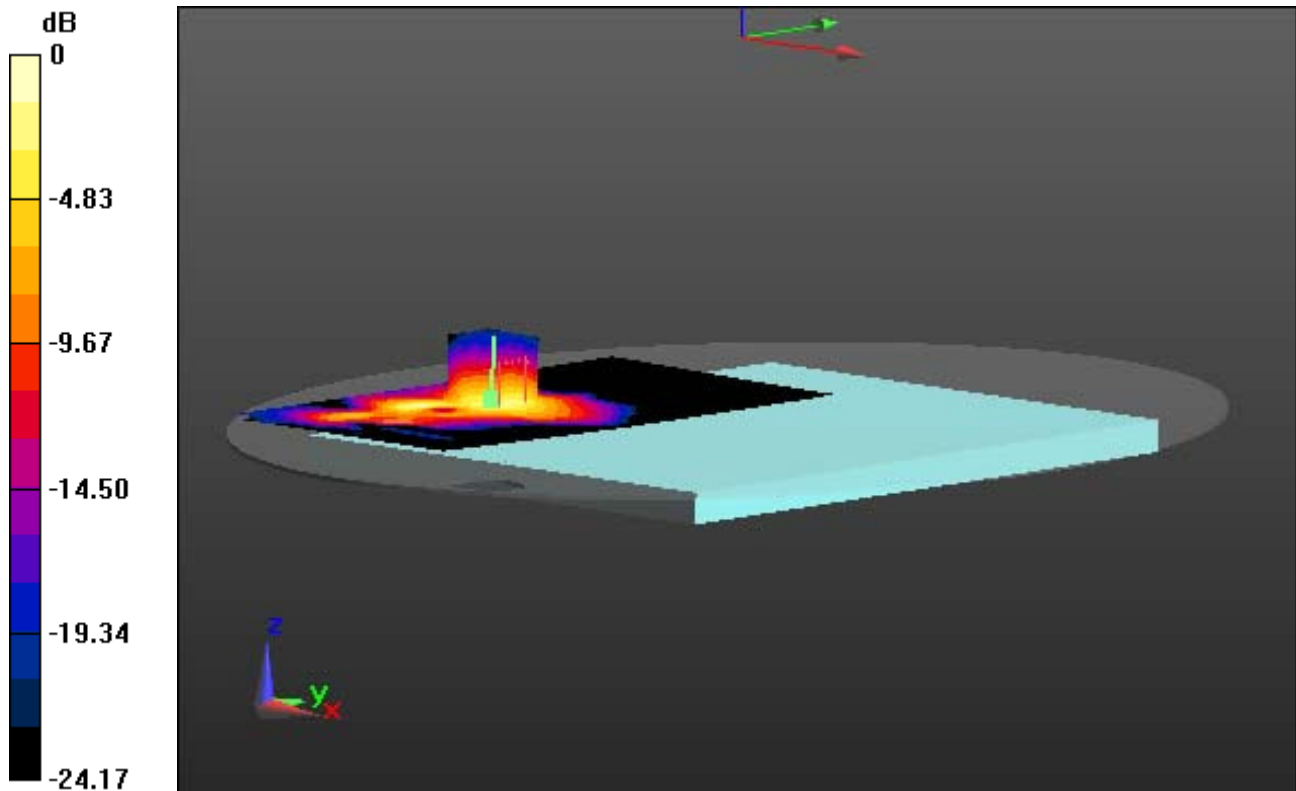
Area Scan (111x251x1): Interpolated grid: dx=12mm, dy=12mm

Zoom Scan (7x7x7)/Cube 0: Measurement grid: dx=5mm, dy=5mm, dz=5mm

Power Drift = -0.01 dB

Peak SAR (extrapolated) = 0.883 W/kg

SAR(1 g) = 0.381 W/kg; SAR(10 g) = 0.184 W/kg



0 dB = 0.601 W/kg

DT&C Co., Ltd.

DUT: LG15Z96; Type: Notebook Computer

Communication System: W-LAN (0); Frequency: 2437 MHz; Duty Cycle: 1:1
Medium parameters used: $f = 2437$ MHz; $\sigma = 1.959$ S/m; $\epsilon_r = 51.176$; $\rho = 1000$ kg/m³
Phantom section: Flat Section

DASY5 Configuration:

Probe: EX3DV4 - SN3933; ConvF(7.63, 7.63, 7.63); Calibrated: 9/29/2015; Electronics: DAE4 Sn1396
Phantom: ELI v5.0_2013_10_08; Type: QDIVA001BB; Serial: 1223
Measurement SW: DASY52, Version 52.8 (8); SEMCAD X Version 14.6.10 (7331)

Test Date: 2015-12-16; Ambient Temp; 20.9; Tissue Temp: 21.3

Touch from Body, Rear, W-LAN(2.4G 802.11b) Ch. 6, Ant Internal, Aux

With Enlarge Plot image

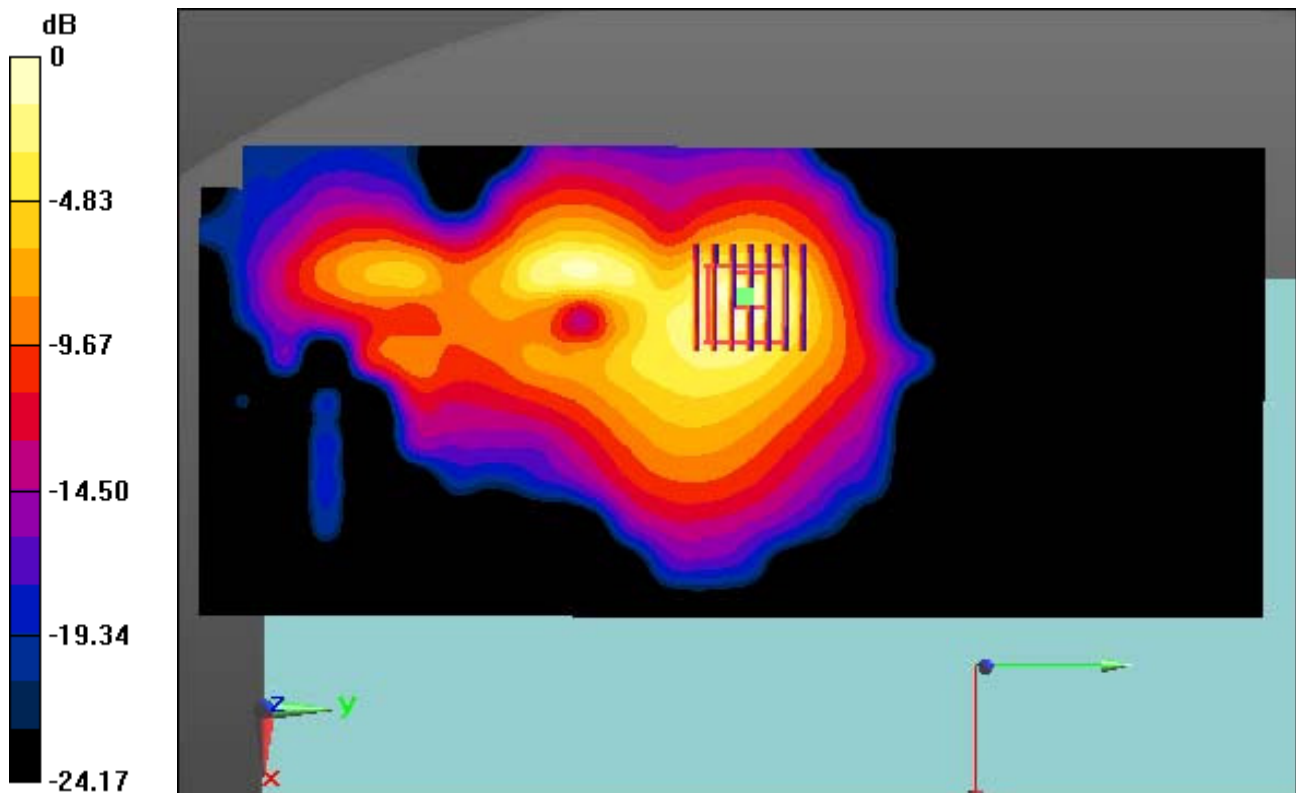
Area Scan (111x251x1): Interpolated grid: dx=12mm, dy=12mm

Zoom Scan (7x7x7)/Cube 0: Measurement grid: dx=5mm, dy=5mm, dz=5mm

Power Drift = -0.01 dB

Peak SAR (extrapolated) = 0.883 W/kg

SAR(1 g) = 0.381 W/kg; SAR(10 g) = 0.184 W/kg



0 dB = 0.601 W/kg

DT&C Co., Ltd.

DUT: LG15Z96; Type: Notebook Computer

Communication System: W-LAN (0); Frequency: 2437 MHz; Duty Cycle: 1:1
Medium parameters used: $f = 2437$ MHz; $\sigma = 1.959$ S/m; $\epsilon_r = 51.176$; $\rho = 1000$ kg/m³
Phantom section: Flat Section

DASY5 Configuration:

Probe: EX3DV4 - SN3933; ConvF(7.63, 7.63, 7.63); Calibrated: 9/29/2015; Electronics: DAE4 Sn1396
Phantom: ELI v5.0_2013_10_08; Type: QDIVA001BB; Serial: 1223
Measurement SW: DASY52, Version 52.8 (8); SEMCAD X Version 14.6.10 (7331)

Test Date: 2015-12-16; Ambient Temp; 20.9; Tissue Temp: 21.3

Touch from Body, Rear, W-LAN(2.4G 802.11b) Ch. 6, Ant Internal, Aux

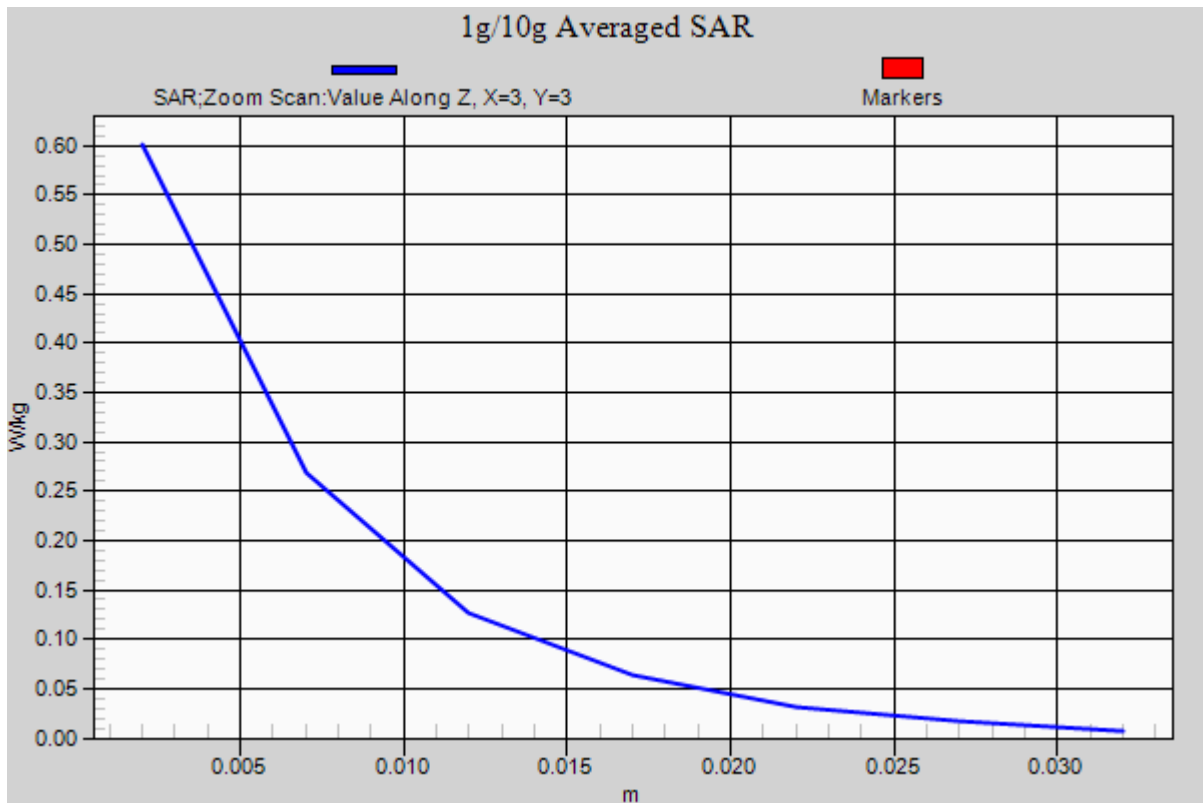
Area Scan (111x251x1): Interpolated grid: dx=12mm, dy=12mm

Zoom Scan (7x7x7)/Cube 0: Measurement grid: dx=5mm, dy=5mm, dz=5mm

Power Drift = -0.01 dB

Peak SAR (extrapolated) = 0.883 W/kg

SAR(1 g) = 0.381 W/kg; SAR(10 g) = 0.184 W/kg



DT&C Co., Ltd.

DUT: LG15Z96; Type: Notebook Computer

Communication System: W-LAN (0); Frequency: 2437 MHz; Duty Cycle: 1:1
Medium parameters used: $f = 2437$ MHz; $\sigma = 1.959$ S/m; $\epsilon_r = 51.176$; $\rho = 1000$ kg/m³
Phantom section: Flat Section

DASY5 Configuration:

Probe: EX3DV4 - SN3933; ConvF(7.63, 7.63, 7.63); Calibrated: 9/29/2015; Electronics: DAE4 Sn1396
Phantom: ELI v5.0_2013_10_08; Type: QDIVA001BB; Serial: 1223
Measurement SW: DASY52, Version 52.8 (8); SEMCAD X Version 14.6.10 (7331)

Test Date: 2015-12-16; Ambient Temp; 20.9; Tissue Temp: 21.3

Touch from Body, Rear, W-LAN(2.4G 802.11n HT40) Ch. 6, Ant Internal, MIMO

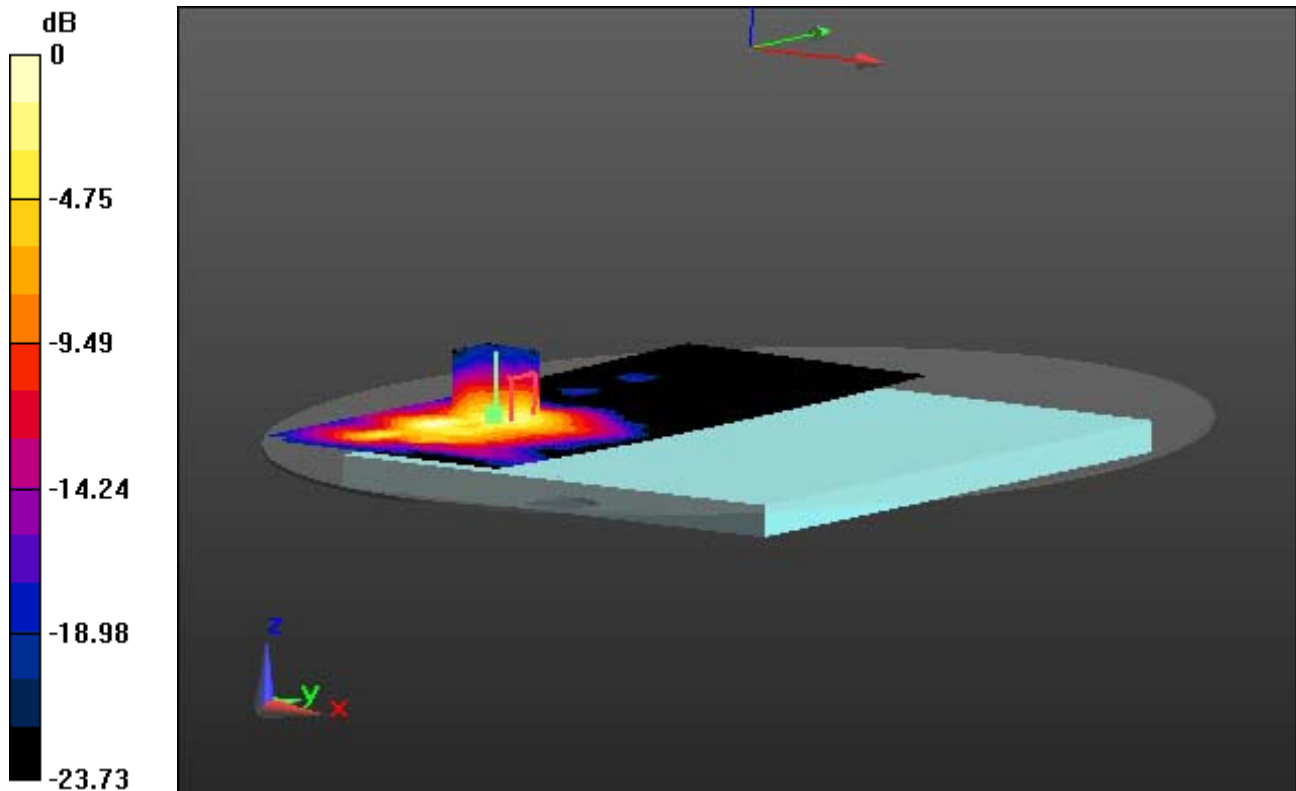
Area Scan (111x331x1): Interpolated grid: dx=12mm, dy=12mm

Zoom Scan (7x7x7)/Cube 0: Measurement grid: dx=5mm, dy=5mm, dz=5mm

Power Drift = -0.18 dB

Peak SAR (extrapolated) = 0.837 W/kg

SAR(1 g) = 0.365 W/kg; SAR(10 g) = 0.174 W/kg



0 dB = 0.588 W/kg

DT&C Co., Ltd.

DUT: LG15Z96; Type: Notebook Computer

Communication System: W-LAN (0); Frequency: 2437 MHz; Duty Cycle: 1:1
Medium parameters used: $f = 2437$ MHz; $\sigma = 1.959$ S/m; $\epsilon_r = 51.176$; $\rho = 1000$ kg/m³
Phantom section: Flat Section

DASY5 Configuration:

Probe: EX3DV4 - SN3933; ConvF(7.63, 7.63, 7.63); Calibrated: 9/29/2015; Electronics: DAE4 Sn1396
Phantom: ELI v5.0_2013_10_08; Type: QDIVA001BB; Serial: 1223
Measurement SW: DASY52, Version 52.8 (8); SEMCAD X Version 14.6.10 (7331)

Test Date: 2015-12-16; Ambient Temp; 20.9; Tissue Temp: 21.3

Touch from Body, Rear, W-LAN(2.4G 802.11n HT40) Ch. 6, Ant Internal, MIMO

With Enlarge Plot image

Area Scan (111x331x1): Interpolated grid: dx=12mm, dy=12mm

Zoom Scan (7x7x7)/Cube 0: Measurement grid: dx=5mm, dy=5mm, dz=5mm

Power Drift = -0.18 dB

Peak SAR (extrapolated) = 0.837 W/kg

SAR(1 g) = 0.365 W/kg; SAR(10 g) = 0.174 W/kg

The figure is a 2D color plot representing the SAR field distribution. The vertical axis on the left is labeled 'dB' and ranges from 0 at the top to -23.73 at the bottom, with intermediate markers at -4.75, -9.49, -14.24, and -18.98. The plot shows a large, irregularly shaped region of high SAR values (yellow and orange) in the center, with a smaller, more intense yellow region within it. The background is dark blue/purple, indicating lower SAR values. A 3D coordinate system (x, y, z) is shown at the bottom left, with x pointing right, y pointing up, and z pointing out of the page. A red arrow points downwards from the center of the plot.

0 dB = 0.588 W/kg

A3

DT&C Co., Ltd.

DUT: LG15Z96; Type: Notebook Computer

Communication System: W-LAN (0); Frequency: 2437 MHz; Duty Cycle: 1:1
Medium parameters used: $f = 2437$ MHz; $\sigma = 1.959$ S/m; $\epsilon_r = 51.176$; $\rho = 1000$ kg/m³
Phantom section: Flat Section

DASY5 Configuration:

Probe: EX3DV4 - SN3933; ConvF(7.63, 7.63, 7.63); Calibrated: 9/29/2015; Electronics: DAE4 Sn1396
Phantom: ELI v5.0_2013_10_08; Type: QDIVA001BB; Serial: 1223
Measurement SW: DASY52, Version 52.8 (8); SEMCAD X Version 14.6.10 (7331)

Test Date: 2015-12-16; Ambient Temp; 20.9; Tissue Temp: 21.3

Touch from Body, Rear, W-LAN(2.4G 802.11n HT40) Ch. 6, Ant Internal, MIMO

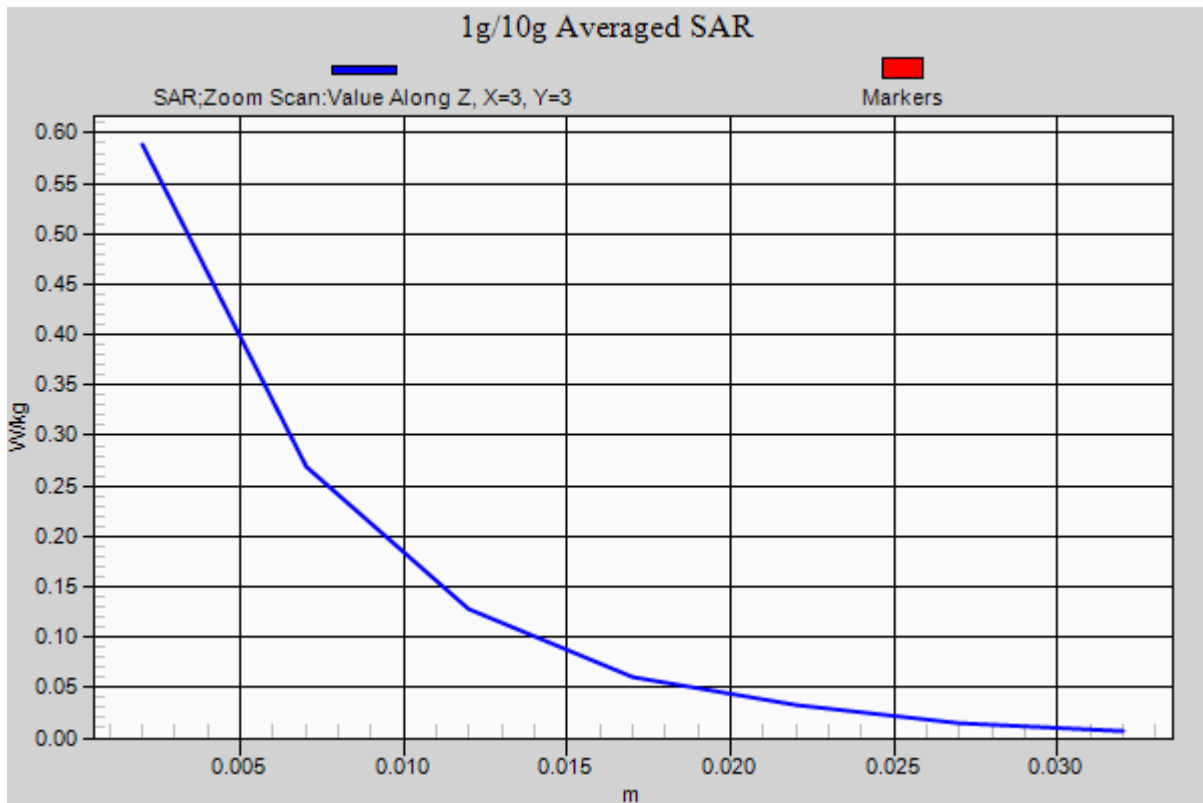
Area Scan (111x331x1): Interpolated grid: dx=12mm, dy=12mm

Zoom Scan (7x7x7)/Cube 0: Measurement grid: dx=5mm, dy=5mm, dz=5mm

Power Drift = -0.18 dB

Peak SAR (extrapolated) = 0.837 W/kg

SAR(1 g) = 0.365 W/kg; SAR(10 g) = 0.174 W/kg



DT&C Co., Ltd.

DUT: LG15Z96; Type: Notebook Computer

Communication System: 802.11ac_HT80 (0); Frequency: 5290 MHz; Duty Cycle: 1:1
Medium parameters used: $f = 5290$ MHz; $\sigma = 5.366$ S/m; $\epsilon_r = 49.333$; $\rho = 1000$ kg/m³
Phantom section: Flat Section

DASY5 Configuration:

Probe: EX3DV4 - SN3933; ConvF(4.65, 4.65, 4.65); Calibrated: 9/29/2015; Electronics: DAE4 Sn1396
Phantom: ELI v5.0_2013_10_08; Type: QDIVA001BB; Serial: 1223
Measurement SW: DASY52, Version 52.8 (8); SEMCAD X Version 14.6.10 (7331)

Test Date: 2015-12-17; Ambient Temp; 20.5; Tissue Temp: 21.0

Touch from Body, Rear, W-LAN(5.3G 802.11ac VHT80) Ch. 58, Ant Internal, Main

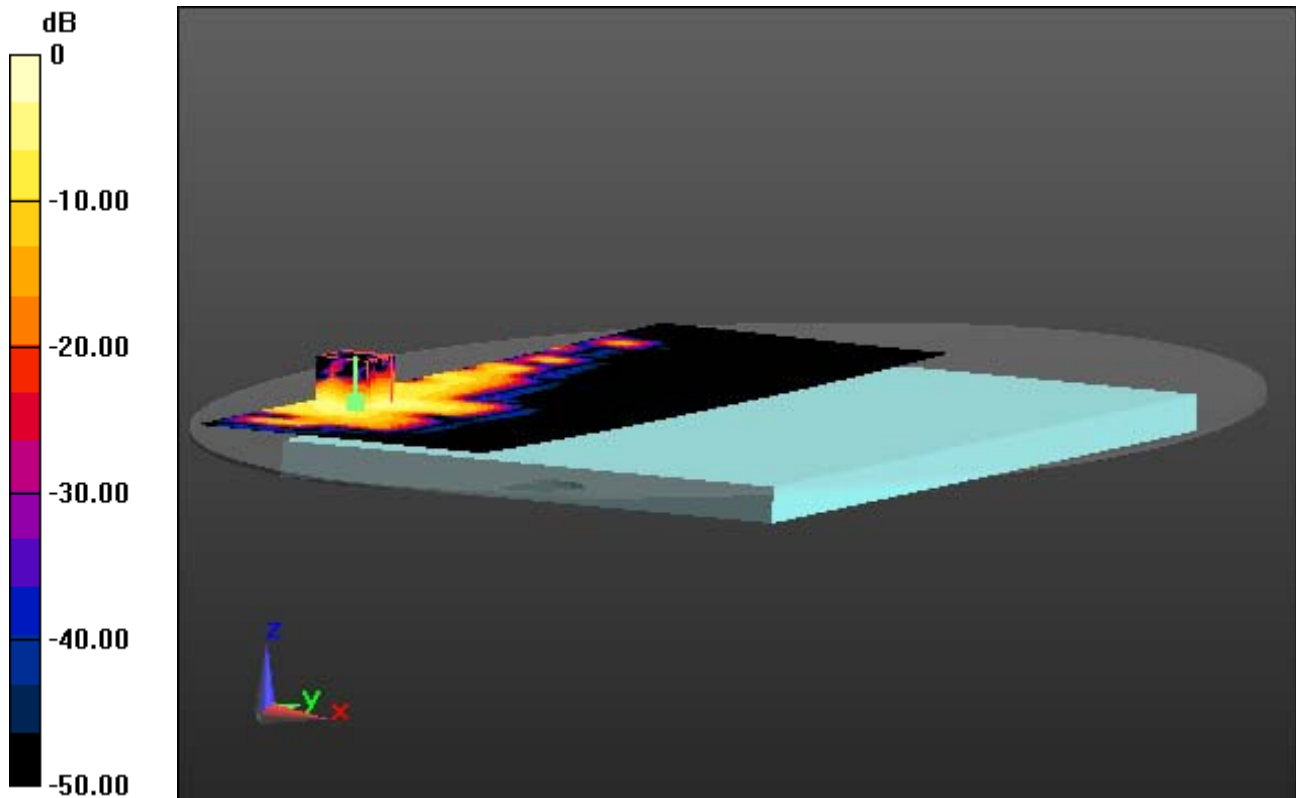
Area Scan (91x261x1): Interpolated grid: dx=10mm, dy=10mm

Zoom Scan (7x7x11)/Cube 0: Measurement grid: dx=4mm, dy=4mm, dz=2mm

Power Drift = -0.00 dB

Peak SAR (extrapolated) = 1.29 W/kg

SAR(1 g) = 0.331 W/kg; SAR(10 g) = 0.119 W/kg



0 dB = 0.673 W/kg

DT&C Co., Ltd.

DUT: LG15Z96; Type: Notebook Computer

Communication System: 802.11ac_HT80 (0); Frequency: 5290 MHz; Duty Cycle: 1:1
Medium parameters used: $f = 5290$ MHz; $\sigma = 5.366$ S/m; $\epsilon_r = 49.333$; $\rho = 1000$ kg/m³
Phantom section: Flat Section

DASY5 Configuration:

Probe: EX3DV4 - SN3933; ConvF(4.65, 4.65, 4.65); Calibrated: 9/29/2015; Electronics: DAE4 Sn1396
Phantom: ELI v5.0_2013_10_08; Type: QDIVA001BB; Serial: 1223
Measurement SW: DASY52, Version 52.8 (8); SEMCAD X Version 14.6.10 (7331)

Test Date: 2015-12-17; Ambient Temp; 20.5; Tissue Temp: 21.0

Touch from Body, Rear, W-LAN(5.3G 802.11ac VHT80) Ch. 58, Ant Internal, Main

With Enlarge Plot image

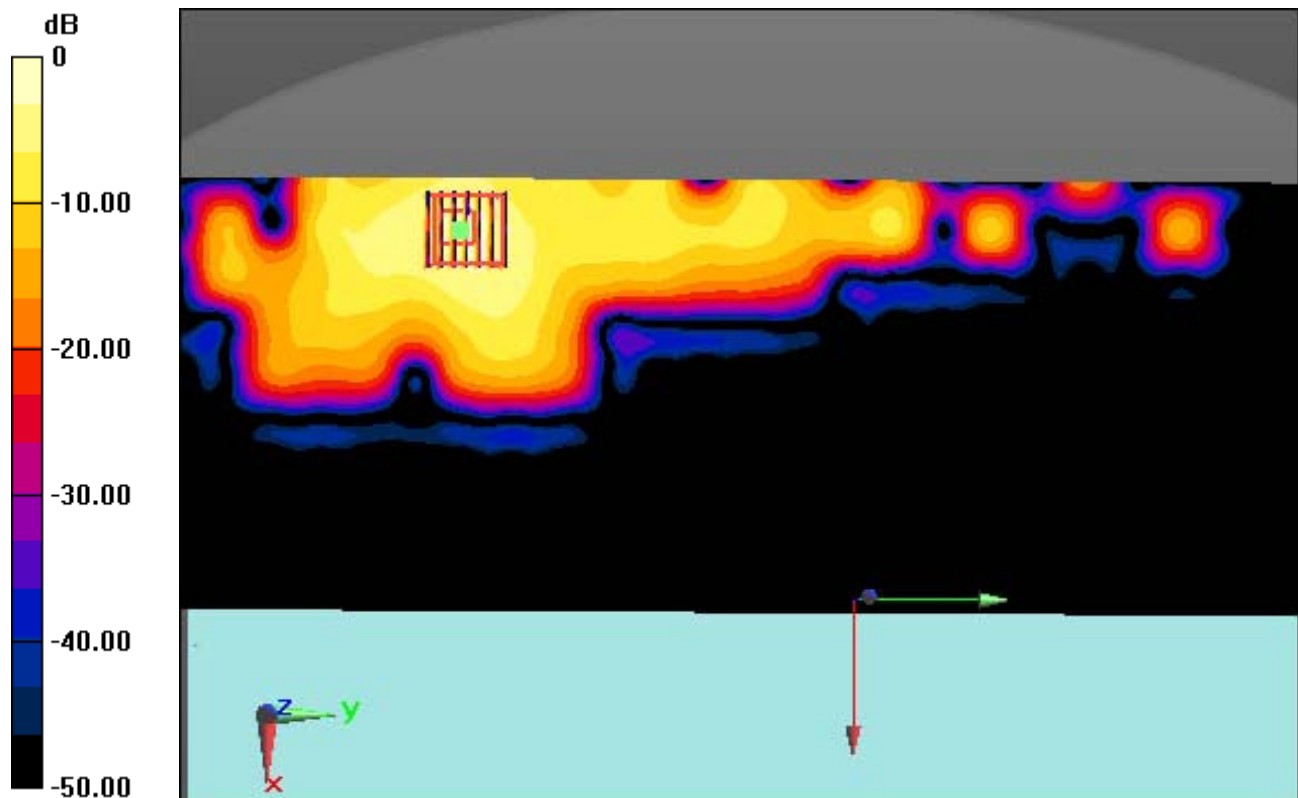
Area Scan (91x261x1): Interpolated grid: dx=10mm, dy=10mm

Zoom Scan (7x7x11)/Cube 0: Measurement grid: dx=4mm, dy=4mm, dz=2mm

Power Drift = -0.00 dB

Peak SAR (extrapolated) = 1.29 W/kg

SAR(1 g) = 0.331 W/kg; SAR(10 g) = 0.119 W/kg



0 dB = 0.673 W/kg

DT&C Co., Ltd.

DUT: LG15Z96; Type: Notebook Computer

Communication System: 802.11ac_HT80 (0); Frequency: 5290 MHz; Duty Cycle: 1:1
Medium parameters used: $f = 5290$ MHz; $\sigma = 5.366$ S/m; $\epsilon_r = 49.333$; $\rho = 1000$ kg/m³
Phantom section: Flat Section

DASY5 Configuration:

Probe: EX3DV4 - SN3933; ConvF(4.65, 4.65, 4.65); Calibrated: 9/29/2015; Electronics: DAE4 Sn1396
Phantom: ELI v5.0_2013_10_08; Type: QDIVA001BB; Serial: 1223
Measurement SW: DASY52, Version 52.8 (8); SEMCAD X Version 14.6.10 (7331)

Test Date: 2015-12-17; Ambient Temp; 20.5; Tissue Temp: 21.0

Touch from Body, Rear, W-LAN(5.3G 802.11ac VHT80) Ch. 58, Ant Internal, Main

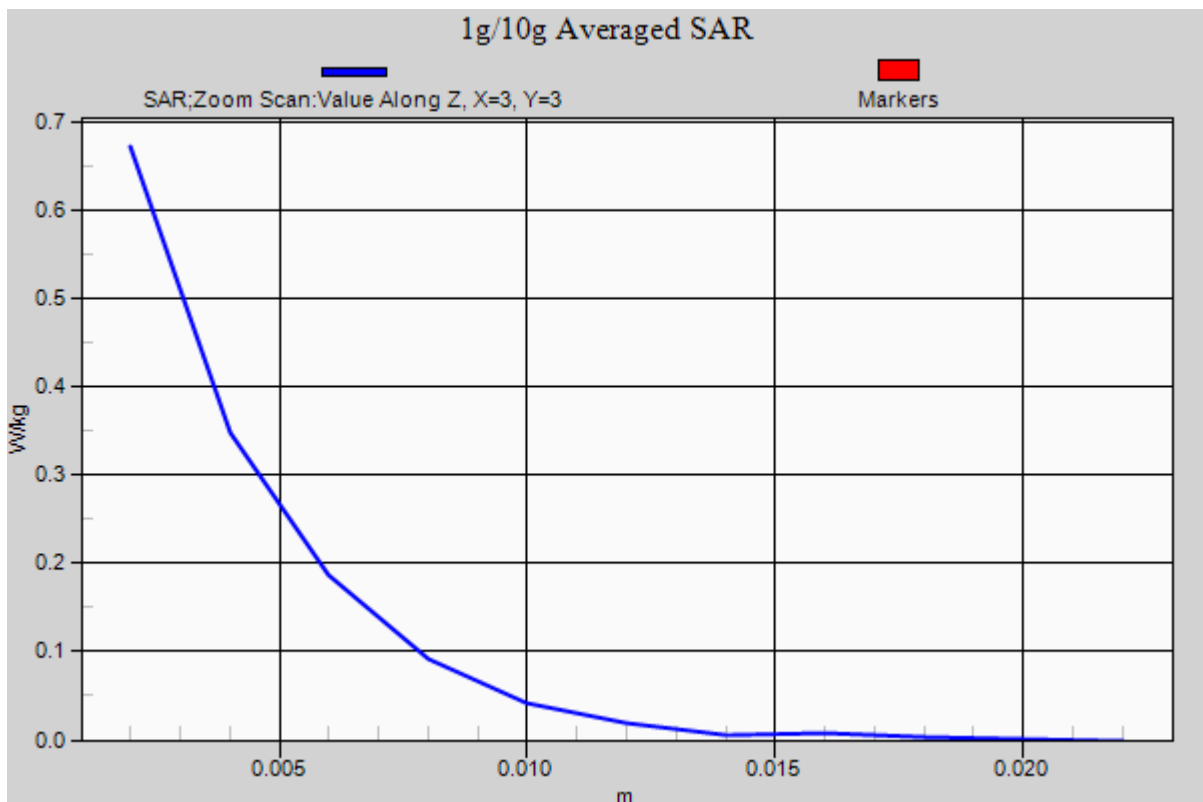
Area Scan (91x261x1): Interpolated grid: dx=10mm, dy=10mm

Zoom Scan (7x7x11)/Cube 0: Measurement grid: dx=4mm, dy=4mm, dz=2mm

Power Drift = -0.00 dB

Peak SAR (extrapolated) = 1.29 W/kg

SAR(1 g) = 0.331 W/kg; SAR(10 g) = 0.119 W/kg



DT&C Co., Ltd.

DUT: LG15Z96; Type: Notebook Computer

Communication System: WLAN_802.11n-HT40_5GHz (0); Frequency: 5710 MHz; Duty Cycle: 1:1
Medium parameters used: $f = 5710$ MHz; $\sigma = 5.889$ S/m; $\epsilon_r = 47.961$; $\rho = 1000$ kg/m³
Phantom section: Flat Section

DASY5 Configuration:

Probe: EX3DV4 - SN3933; ConvF(4.07, 4.07, 4.07); Calibrated: 9/29/2015; Electronics: DAE4 Sn1396
Phantom: ELI v5.0_2013_10_08; Type: QDIVA001BB; Serial: 1223
Measurement SW: DASY52, Version 52.8 (8); SEMCAD X Version 14.6.10 (7331)

Test Date: 2015-12-18; Ambient Temp; 20.7; Tissue Temp: 20.9

Touch from Body, Rear, W-LAN(5.6G 802.11n HT40) Ch. 142, Ant Internal, Main

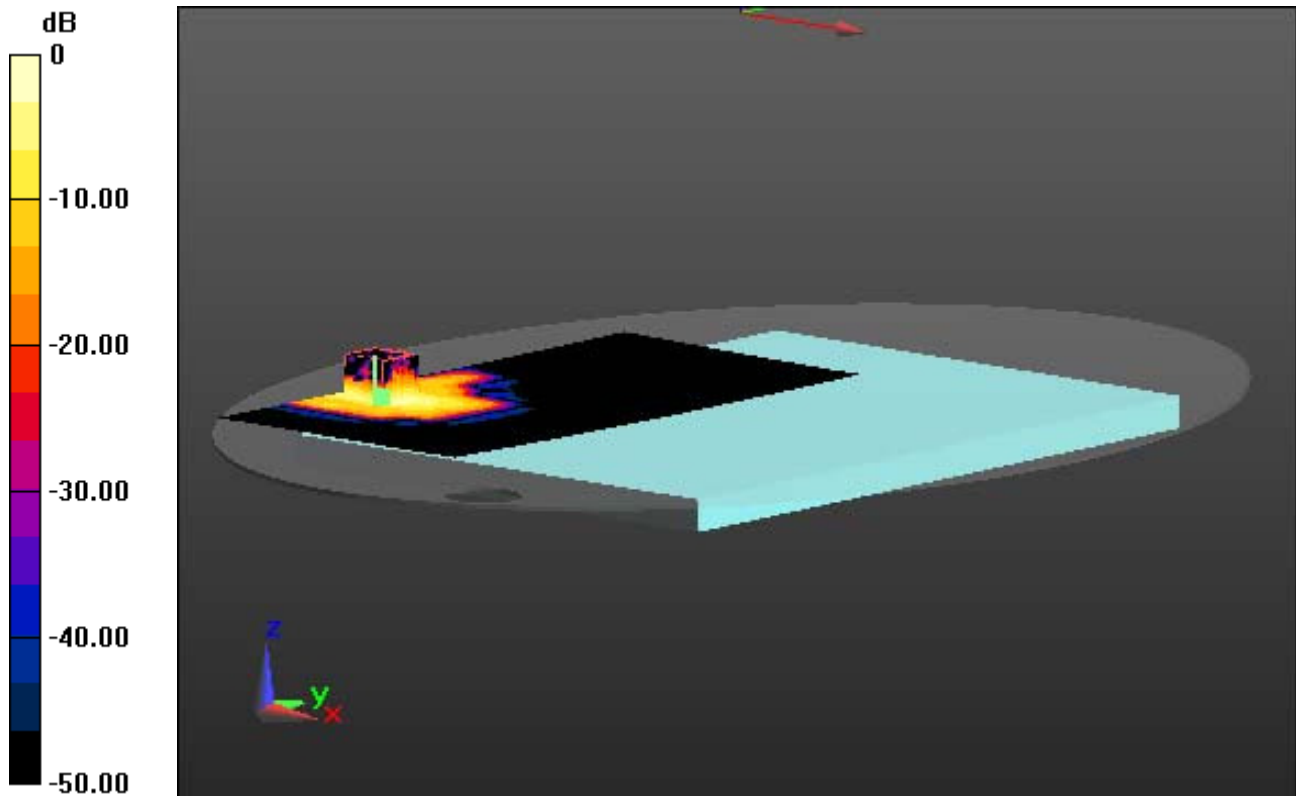
Area Scan (91x201x1): Interpolated grid: dx=10mm, dy=10mm

Zoom Scan (7x7x11)/Cube 0: Measurement grid: dx=4mm, dy=4mm, dz=2mm

Power Drift = 0.06 dB

Peak SAR (extrapolated) = 1.04 W/kg

SAR(1 g) = 0.227 W/kg; SAR(10 g) = 0.086 W/kg



0 dB = 0.453 W/kg

DT&C Co., Ltd.

DUT: LG15Z96; Type: Notebook Computer

Communication System: WLAN_802.11n-HT40_5GHz (0); Frequency: 5710 MHz; Duty Cycle: 1:1
Medium parameters used: $f = 5710$ MHz; $\sigma = 5.889$ S/m; $\epsilon_r = 47.961$; $\rho = 1000$ kg/m³
Phantom section: Flat Section

DASY5 Configuration:

Probe: EX3DV4 - SN3933; ConvF(4.07, 4.07, 4.07); Calibrated: 9/29/2015; Electronics: DAE4 Sn1396
Phantom: ELI v5.0_2013_10_08; Type: QDIVA001BB; Serial: 1223
Measurement SW: DASY52, Version 52.8 (8); SEMCAD X Version 14.6.10 (7331)

Test Date: 2015-12-18; Ambient Temp; 20.7; Tissue Temp: 20.9

Touch from Body, Rear, W-LAN(5.6G 802.11n HT40) Ch. 142, Ant Internal, Main

With Enlarge Plot image

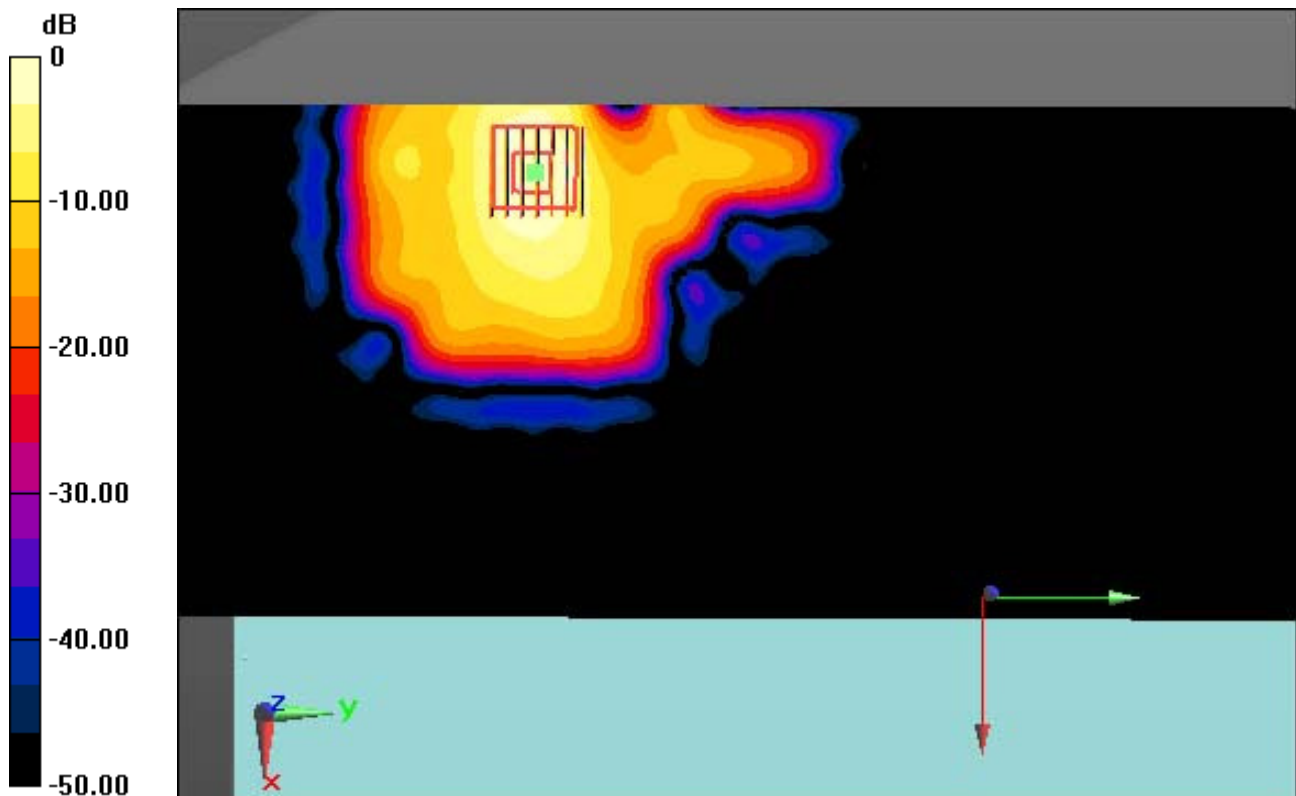
Area Scan (91x201x1): Interpolated grid: dx=10mm, dy=10mm

Zoom Scan (7x7x11)/Cube 0: Measurement grid: dx=4mm, dy=4mm, dz=2mm

Power Drift = 0.06 dB

Peak SAR (extrapolated) = 1.04 W/kg

SAR(1 g) = 0.227 W/kg; SAR(10 g) = 0.086 W/kg



0 dB = 0.453 W/kg

DT&C Co., Ltd.

DUT: LG15Z96; Type: Notebook Computer

Communication System: WLAN_802.11n-HT40_5GHz (0); Frequency: 5710 MHz; Duty Cycle: 1:1
Medium parameters used: $f = 5710$ MHz; $\sigma = 5.889$ S/m; $\epsilon_r = 47.961$; $\rho = 1000$ kg/m³
Phantom section: Flat Section

DASY5 Configuration:

Probe: EX3DV4 - SN3933; ConvF(4.07, 4.07, 4.07); Calibrated: 9/29/2015; Electronics: DAE4 Sn1396
Phantom: ELI v5.0_2013_10_08; Type: QDIVA001BB; Serial: 1223
Measurement SW: DASY52, Version 52.8 (8); SEMCAD X Version 14.6.10 (7331)

Test Date: 2015-12-18; Ambient Temp; 20.7; Tissue Temp: 20.9

Touch from Body, Rear, W-LAN(5.6G 802.11n HT40) Ch. 142, Ant Internal, Main

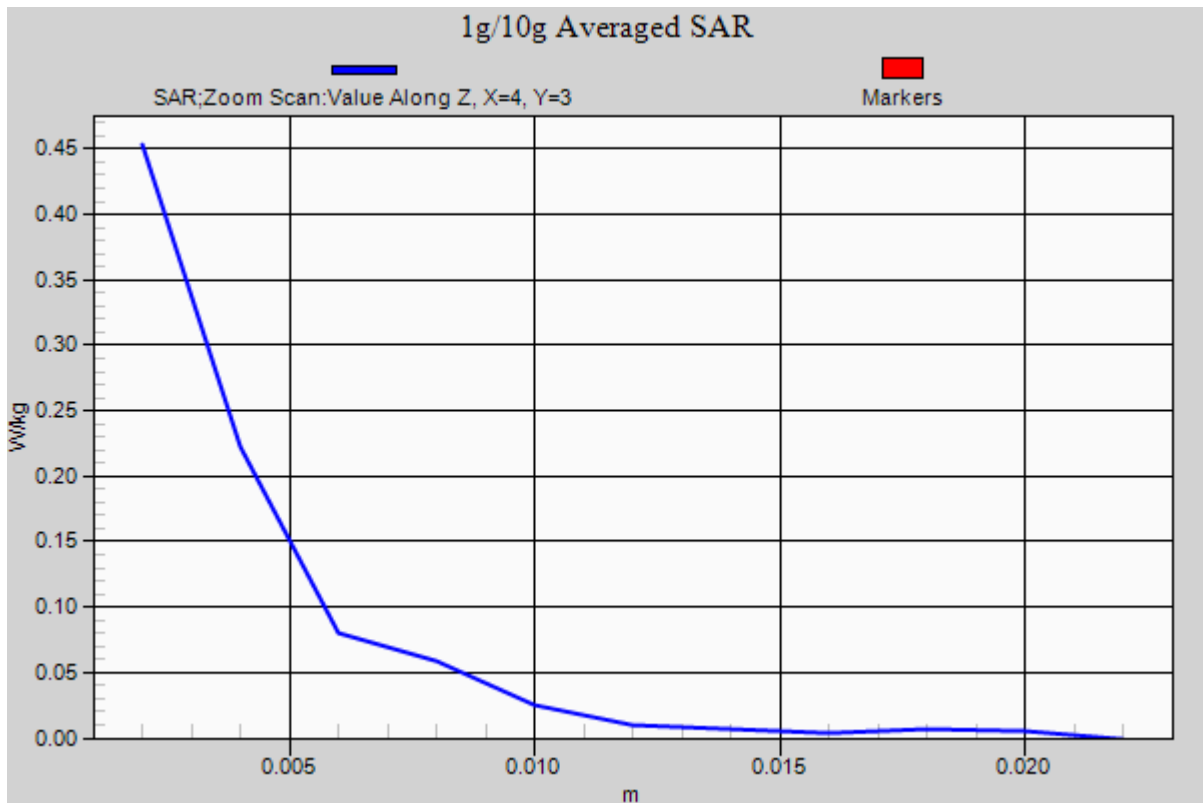
Area Scan (91x201x1): Interpolated grid: dx=10mm, dy=10mm

Zoom Scan (7x7x11)/Cube 0: Measurement grid: dx=4mm, dy=4mm, dz=2mm

Power Drift = 0.06 dB

Peak SAR (extrapolated) = 1.04 W/kg

SAR(1 g) = 0.227 W/kg; SAR(10 g) = 0.086 W/kg



DT&C Co., Ltd.

DUT: LG15Z96; Type: Notebook Computer

Communication System: W-LAN_5800 (0); Frequency: 5825 MHz; Duty Cycle: 1:1
Medium parameters used: $f = 5825$ MHz; $\sigma = 6.052$ S/m; $\epsilon_r = 47.777$; $\rho = 1000$ kg/m³
Phantom section: Flat Section

DASY5 Configuration:

Probe: EX3DV4 - SN3933; ConvF(4.07, 4.07, 4.07); Calibrated: 9/29/2015; Electronics: DAE4 Sn1396
Phantom: ELI v5.0_2013_10_08; Type: QDIVA001BB; Serial: 1223
Measurement SW: DASY52, Version 52.8 (8); SEMCAD X Version 14.6.10 (7331)

Test Date: 2015-12-18; Ambient Temp; 20.7; Tissue Temp: 20.9

Touch from Body, Rear, W-LAN(5.8G 802.11a) Ch. 165, Ant Internal, Main

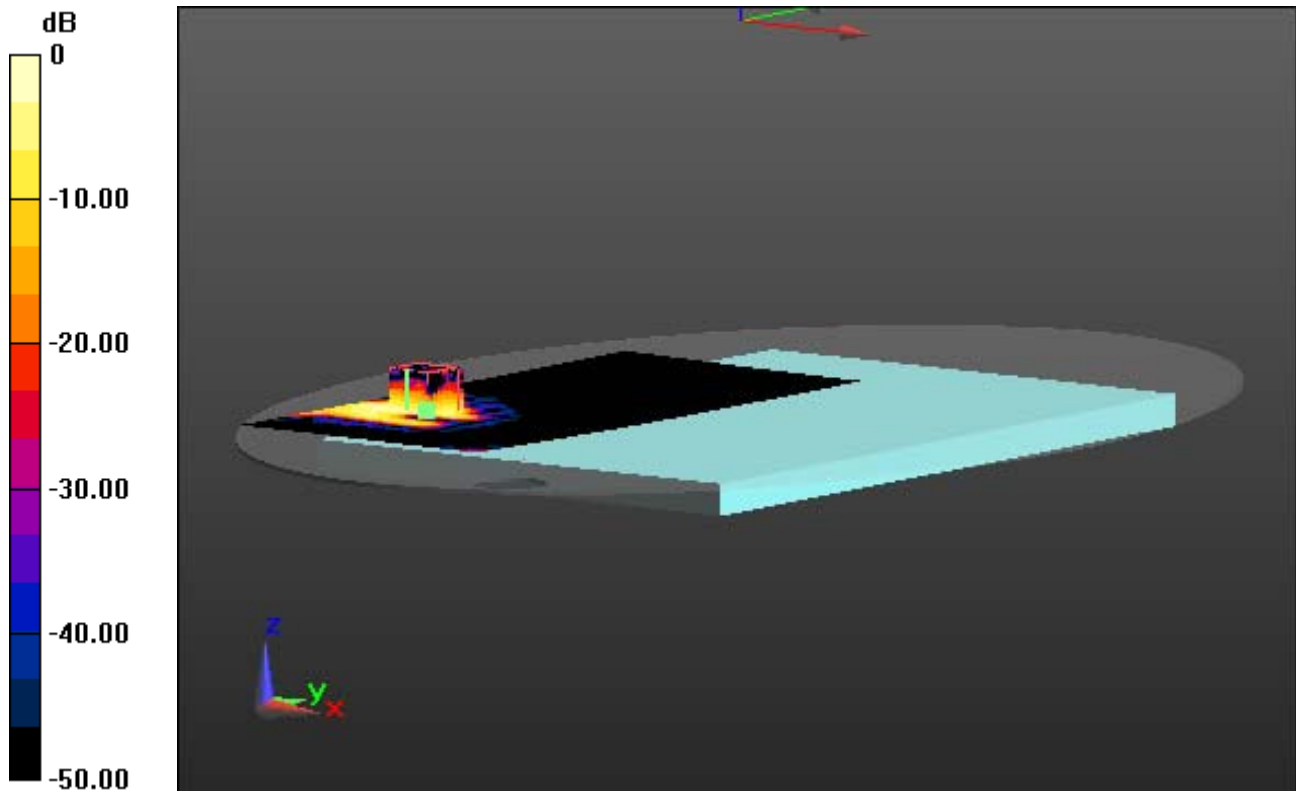
Area Scan (91x201x1): Interpolated grid: dx=10mm, dy=10mm

Zoom Scan (7x7x11)/Cube 0: Measurement grid: dx=4mm, dy=4mm, dz=2mm

Power Drift = -0.04 dB

Peak SAR (extrapolated) = 1.09 W/kg

SAR(1 g) = 0.278 W/kg; SAR(10 g) = 0.096 W/kg



0 dB = 0.577 W/kg

DT&C Co., Ltd.

DUT: LG15Z96; Type: Notebook Computer

Communication System: W-LAN_5800 (0); Frequency: 5825 MHz; Duty Cycle: 1:1
Medium parameters used: $f = 5825$ MHz; $\sigma = 6.052$ S/m; $\epsilon_r = 47.777$; $\rho = 1000$ kg/m³
Phantom section: Flat Section

DASY5 Configuration:

Probe: EX3DV4 - SN3933; ConvF(4.07, 4.07, 4.07); Calibrated: 9/29/2015; Electronics: DAE4 Sn1396
Phantom: ELI v5.0_2013_10_08; Type: QDIVA001BB; Serial: 1223
Measurement SW: DASY52, Version 52.8 (8); SEMCAD X Version 14.6.10 (7331)

Test Date: 2015-12-18; Ambient Temp; 20.7; Tissue Temp: 20.9

Touch from Body, Rear, W-LAN(5.8G 802.11a) Ch. 165, Ant Internal, Main

With Enlarge Plot image

Area Scan (91x201x1): Interpolated grid: dx=10mm, dy=10mm

Zoom Scan (7x7x11)/Cube 0: Measurement grid: dx=4mm, dy=4mm, dz=2mm

Power Drift = -0.04 dB

Peak SAR (extrapolated) = 1.09 W/kg

SAR(1 g) = 0.278 W/kg; SAR(10 g) = 0.096 W/kg

The figure is a 2D color plot representing the SAR field distribution. The vertical axis on the left is labeled 'dB' and ranges from 0 at the top to -50.00 at the bottom, with major ticks at 0, -10.00, -20.00, -30.00, -40.00, and -50.00. The plot area shows a central region of high intensity (yellow and red) that tapers off into blue and purple towards the edges. A 3D coordinate system is shown in the bottom-left corner of the plot area, with the X-axis pointing right (red), the Y-axis pointing up (green), and the Z-axis pointing out of the page (blue). A small grid of red lines is visible within the high-intensity central region.

0 dB = 0.577 W/kg

A6

DT&C Co., Ltd.

DUT: LG15Z96; Type: Notebook Computer

Communication System: W-LAN_5800 (0); Frequency: 5825 MHz; Duty Cycle: 1:1
Medium parameters used: $f = 5825$ MHz; $\sigma = 6.052$ S/m; $\epsilon_r = 47.777$; $\rho = 1000$ kg/m³
Phantom section: Flat Section

DASY5 Configuration:

Probe: EX3DV4 - SN3933; ConvF(4.07, 4.07, 4.07); Calibrated: 9/29/2015; Electronics: DAE4 Sn1396
Phantom: ELI v5.0_2013_10_08; Type: QDIVA001BB; Serial: 1223
Measurement SW: DASY52, Version 52.8 (8); SEMCAD X Version 14.6.10 (7331)

Test Date: 2015-12-18; Ambient Temp; 20.7; Tissue Temp: 20.9

Touch from Body, Rear, W-LAN(5.8G 802.11a) Ch. 165, Ant Internal, Main

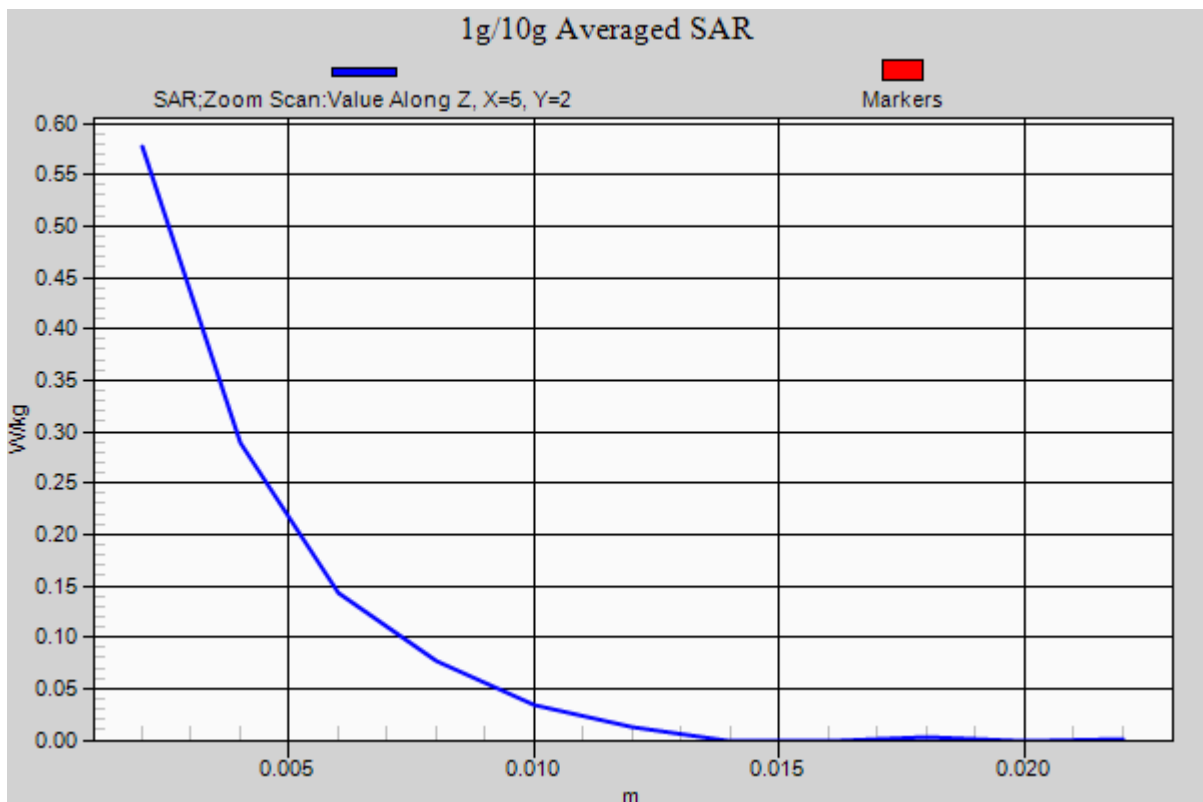
Area Scan (91x201x1): Interpolated grid: dx=10mm, dy=10mm

Zoom Scan (7x7x11)/Cube 0: Measurement grid: dx=4mm, dy=4mm, dz=2mm

Power Drift = -0.04 dB

Peak SAR (extrapolated) = 1.09 W/kg

SAR(1 g) = 0.278 W/kg; SAR(10 g) = 0.096 W/kg



DT&C Co., Ltd.

DUT: LG15Z96; Type: Notebook Computer

Communication System: WLAN_802.11n-HT40_5GHz (0); Frequency: 5230 MHz; Duty Cycle: 1:1
Medium parameters used: $f = 5230$ MHz; $\sigma = 5.288$ S/m; $\epsilon_r = 49.447$; $\rho = 1000$ kg/m³
Phantom section: Flat Section

DASY5 Configuration:

Probe: EX3DV4 - SN3933; ConvF(4.75, 4.75, 4.75); Calibrated: 9/29/2015; Electronics: DAE4 Sn1396
Phantom: ELI v5.0_2013_10_08; Type: QDIVA001BB; Serial: 1223
Measurement SW: DASY52, Version 52.8 (8); SEMCAD X Version 14.6.10 (7331)

Test Date: 2015-12-17; Ambient Temp; 20.5; Tissue Temp: 21.0

Touch from Body, Rear, W-LAN(5.3G 802.11n HT40) Ch. 46, Ant Internal, Aux

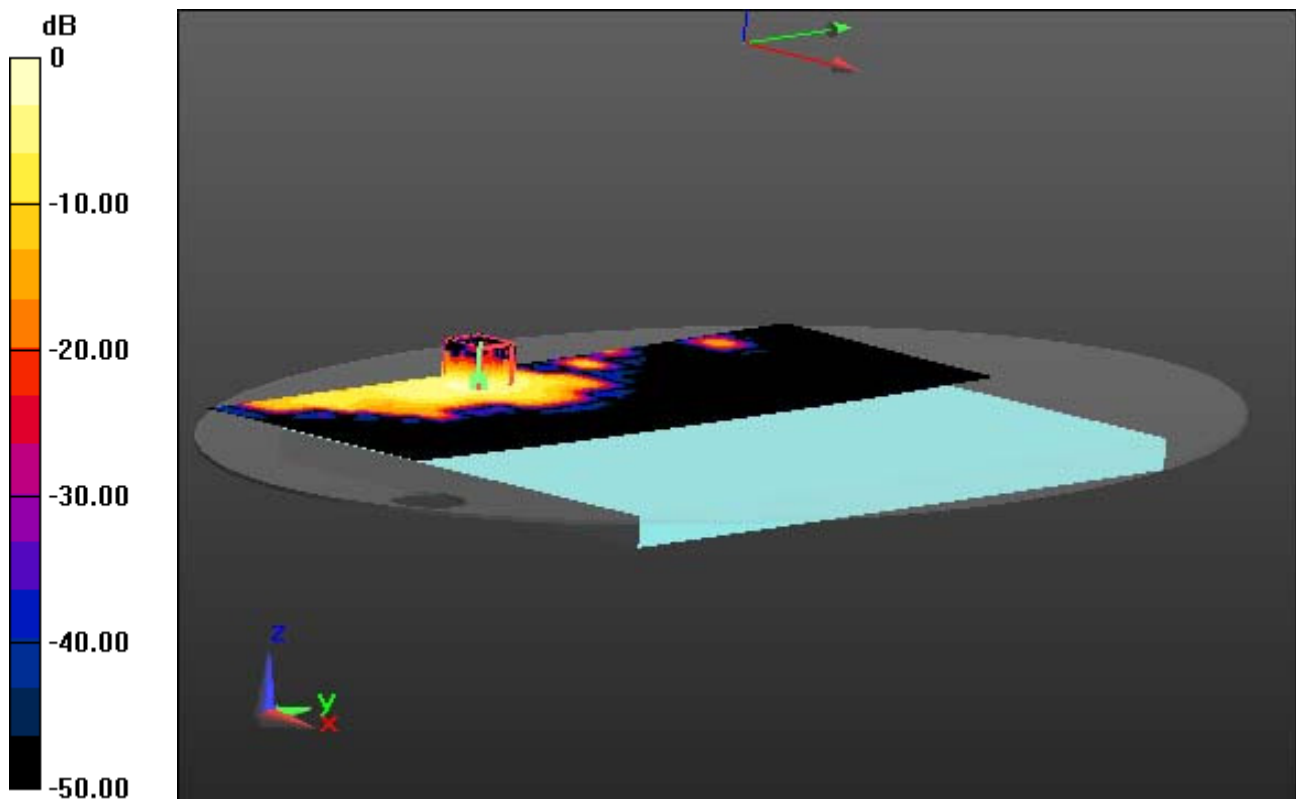
Area Scan (91x261x1): Interpolated grid: dx=10mm, dy=10mm

Zoom Scan (7x7x11)/Cube 0: Measurement grid: dx=4mm, dy=4mm, dz=2mm

Power Drift = 0.10 dB

Peak SAR (extrapolated) = 0.843 W/kg

SAR(1 g) = 0.206 W/kg; SAR(10 g) = 0.074 W/kg



0 dB = 0.420 W/kg

DT&C Co., Ltd.

DUT: LG15Z96; Type: Notebook Computer

Communication System: WLAN_802.11n-HT40_5GHz (0); Frequency: 5230 MHz; Duty Cycle: 1:1
Medium parameters used: $f = 5230$ MHz; $\sigma = 5.288$ S/m; $\epsilon_r = 49.447$; $\rho = 1000$ kg/m³
Phantom section: Flat Section

DASY5 Configuration:

Probe: EX3DV4 - SN3933; ConvF(4.75, 4.75, 4.75); Calibrated: 9/29/2015; Electronics: DAE4 Sn1396
Phantom: ELI v5.0_2013_10_08; Type: QDIVA001BB; Serial: 1223
Measurement SW: DASY52, Version 52.8 (8); SEMCAD X Version 14.6.10 (7331)

Test Date: 2015-12-17; Ambient Temp; 20.5; Tissue Temp: 21.0

Touch from Body, Rear, W-LAN(5.3G 802.11n HT40) Ch. 46, Ant Internal, Aux

With Enlarge Plot image

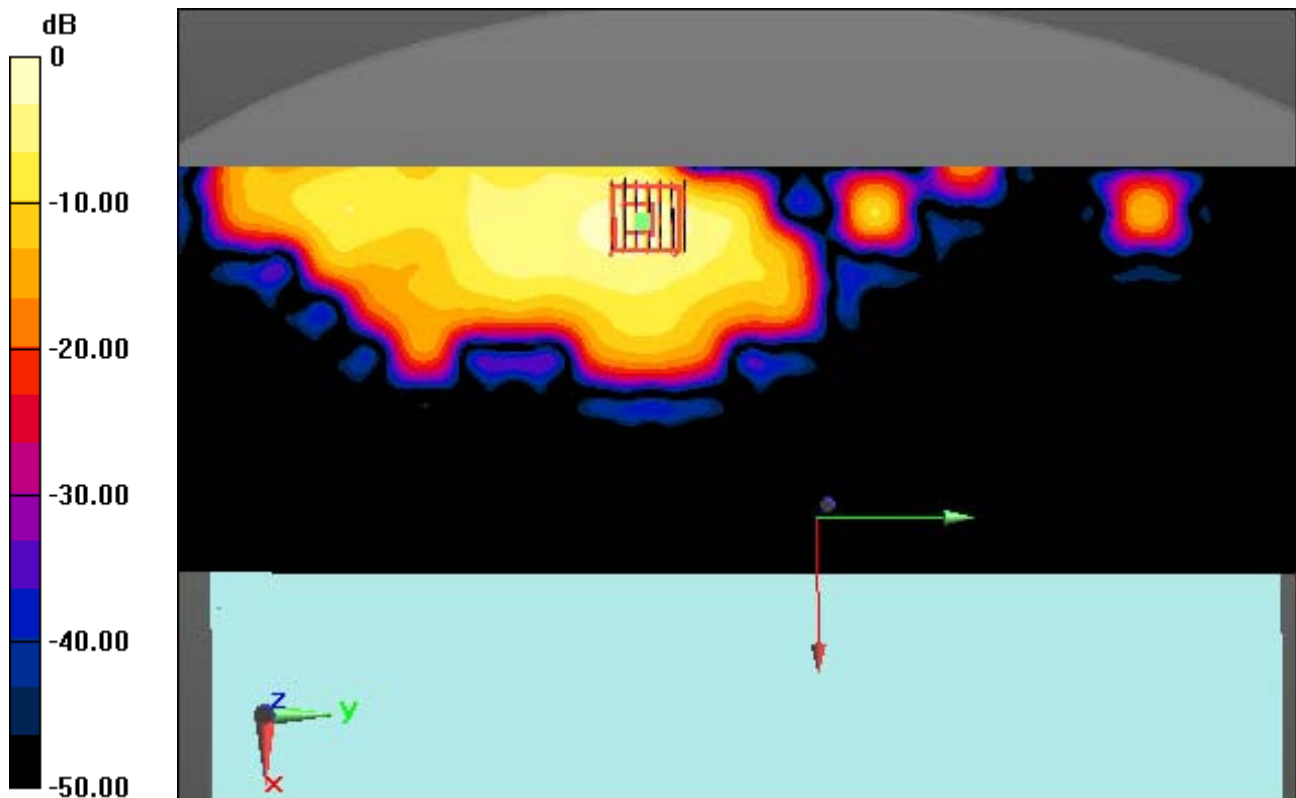
Area Scan (91x261x1): Interpolated grid: dx=10mm, dy=10mm

Zoom Scan (7x7x11)/Cube 0: Measurement grid: dx=4mm, dy=4mm, dz=2mm

Power Drift = 0.10 dB

Peak SAR (extrapolated) = 0.843 W/kg

SAR(1 g) = 0.206 W/kg; SAR(10 g) = 0.074 W/kg



0 dB = 0.420 W/kg

DT&C Co., Ltd.

DUT: LG15Z96; Type: Notebook Computer

Communication System: WLAN_802.11n-HT40_5GHz (0); Frequency: 5230 MHz; Duty Cycle: 1:1
Medium parameters used: $f = 5230$ MHz; $\sigma = 5.288$ S/m; $\epsilon_r = 49.447$; $\rho = 1000$ kg/m³
Phantom section: Flat Section

DASY5 Configuration:

Probe: EX3DV4 - SN3933; ConvF(4.75, 4.75, 4.75); Calibrated: 9/29/2015; Electronics: DAE4 Sn1396
Phantom: ELI v5.0_2013_10_08; Type: QDIVA001BB; Serial: 1223
Measurement SW: DASY52, Version 52.8 (8); SEMCAD X Version 14.6.10 (7331)

Test Date: 2015-12-17; Ambient Temp; 20.5; Tissue Temp: 21.0

Touch from Body, Rear, W-LAN(5.3G 802.11n HT40) Ch. 46, Ant Internal, Aux

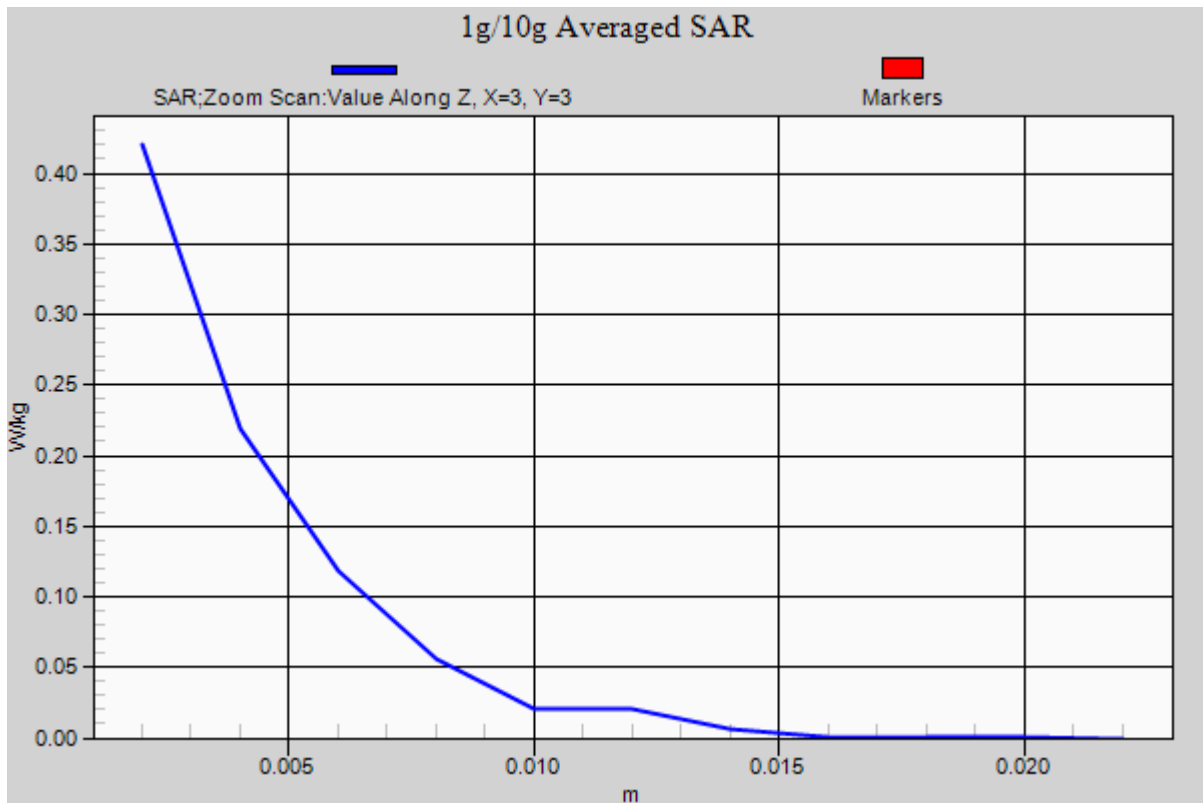
Area Scan (91x261x1): Interpolated grid: dx=10mm, dy=10mm

Zoom Scan (7x7x11)/Cube 0: Measurement grid: dx=4mm, dy=4mm, dz=2mm

Power Drift = 0.10 dB

Peak SAR (extrapolated) = 0.843 W/kg

SAR(1 g) = 0.206 W/kg; SAR(10 g) = 0.074 W/kg



DT&C Co., Ltd.

DUT: LG15Z96; Type: Notebook Computer

Communication System: WLAN_802.11n-HT40_5GHz (0); Frequency: 5550 MHz; Duty Cycle: 1:1
Medium parameters used: $f = 5550$ MHz; $\sigma = 5.662$ S/m; $\epsilon_r = 48.235$; $\rho = 1000$ kg/m³
Phantom section: Flat Section

DASY5 Configuration:

Probe: EX3DV4 - SN3933; ConvF(4.26, 4.26, 4.26); Calibrated: 9/29/2015; Electronics: DAE4 Sn1396
Phantom: ELI v5.0_2013_10_08; Type: QDIVA001BB; Serial: 1223
Measurement SW: DASY52, Version 52.8 (8); SEMCAD X Version 14.6.10 (7331)

Test Date: 2015-12-18; Ambient Temp; 20.7; Tissue Temp: 20.9

Touch from Body, Rear, W-LAN(5.6G 802.11n HT40) Ch. 110, Ant Internal, Aux

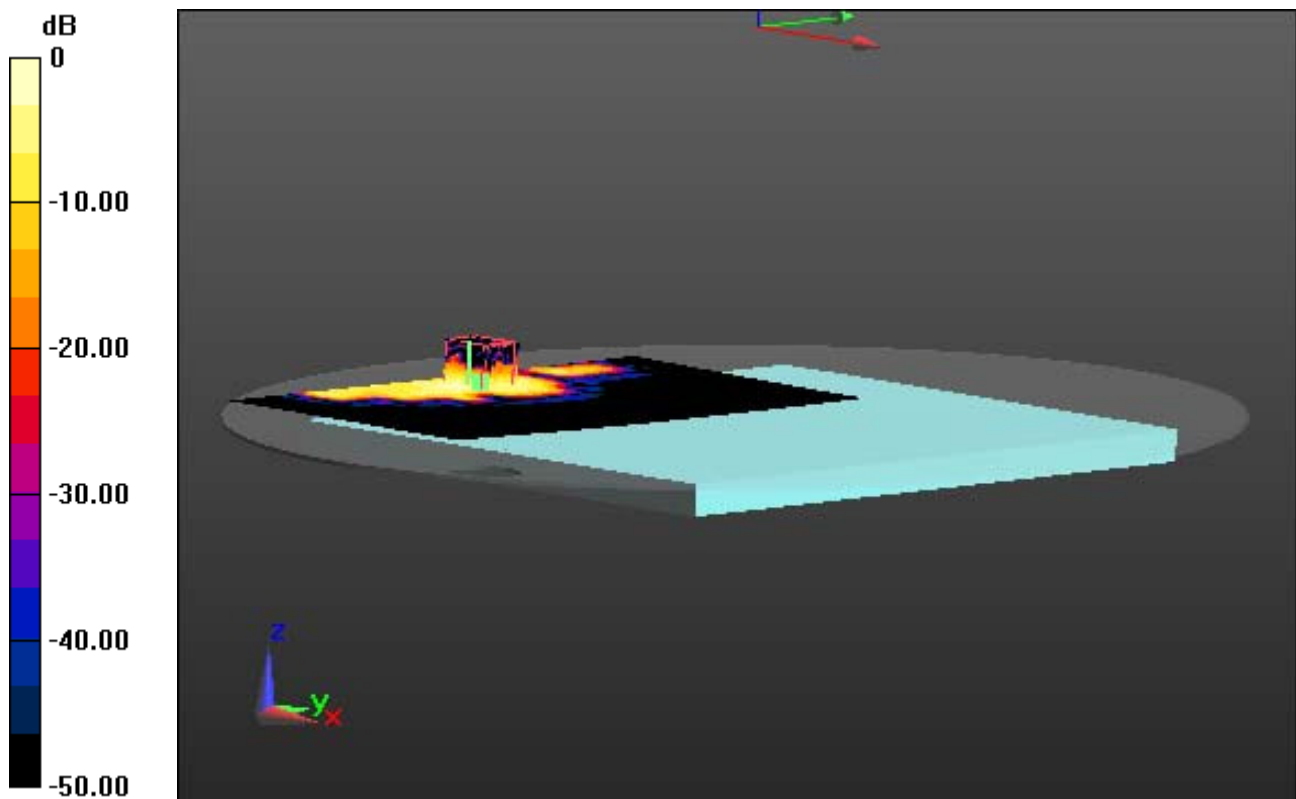
Area Scan (91x201x1): Interpolated grid: dx=10mm, dy=10mm

Zoom Scan (7x7x11)/Cube 0: Measurement grid: dx=4mm, dy=4mm, dz=2mm

Power Drift = 0.02 dB

Peak SAR (extrapolated) = 1.05 W/kg

SAR(1 g) = 0.190 W/kg; SAR(10 g) = 0.060 W/kg



0 dB = 0.364 W/kg

DT&C Co., Ltd.

DUT: LG15Z96; Type: Notebook Computer

Communication System: WLAN_802.11n-HT40_5GHz (0); Frequency: 5550 MHz; Duty Cycle: 1:1
Medium parameters used: $f = 5550$ MHz; $\sigma = 5.662$ S/m; $\epsilon_r = 48.235$; $\rho = 1000$ kg/m³
Phantom section: Flat Section

DASY5 Configuration:

Probe: EX3DV4 - SN3933; ConvF(4.26, 4.26, 4.26); Calibrated: 9/29/2015; Electronics: DAE4 Sn1396
Phantom: ELI v5.0_2013_10_08; Type: QDIVA001BB; Serial: 1223
Measurement SW: DASY52, Version 52.8 (8); SEMCAD X Version 14.6.10 (7331)

Test Date: 2015-12-18; Ambient Temp; 20.7; Tissue Temp: 20.9

Touch from Body, Rear, W-LAN(5.6G 802.11n HT40) Ch. 110, Ant Internal, Aux

With Enlarge Plot image

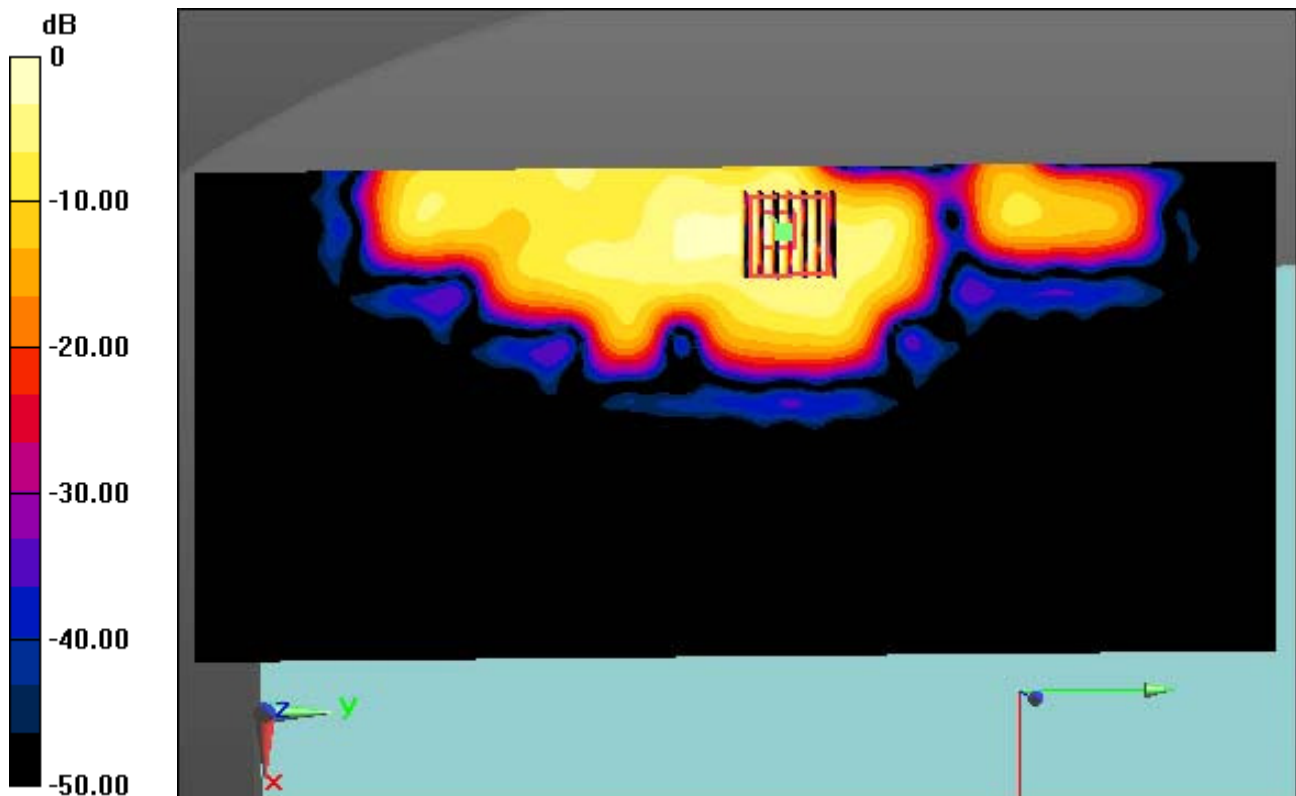
Area Scan (91x201x1): Interpolated grid: dx=10mm, dy=10mm

Zoom Scan (7x7x11)/Cube 0: Measurement grid: dx=4mm, dy=4mm, dz=2mm

Power Drift = 0.02 dB

Peak SAR (extrapolated) = 1.05 W/kg

SAR(1 g) = 0.190 W/kg; SAR(10 g) = 0.060 W/kg



0 dB = 0.364 W/kg

DT&C Co., Ltd.

DUT: LG15Z96; Type: Notebook Computer

Communication System: WLAN_802.11n-HT40_5GHz (0); Frequency: 5550 MHz; Duty Cycle: 1:1
Medium parameters used: $f = 5550$ MHz; $\sigma = 5.662$ S/m; $\epsilon_r = 48.235$; $\rho = 1000$ kg/m³
Phantom section: Flat Section

DASY5 Configuration:

Probe: EX3DV4 - SN3933; ConvF(4.26, 4.26, 4.26); Calibrated: 9/29/2015; Electronics: DAE4 Sn1396
Phantom: ELI v5.0_2013_10_08; Type: QDIVA001BB; Serial: 1223
Measurement SW: DASY52, Version 52.8 (8); SEMCAD X Version 14.6.10 (7331)

Test Date: 2015-12-18; Ambient Temp; 20.7; Tissue Temp: 20.9

Touch from Body, Rear, W-LAN(5.6G 802.11n HT40) Ch. 110, Ant Internal, Aux

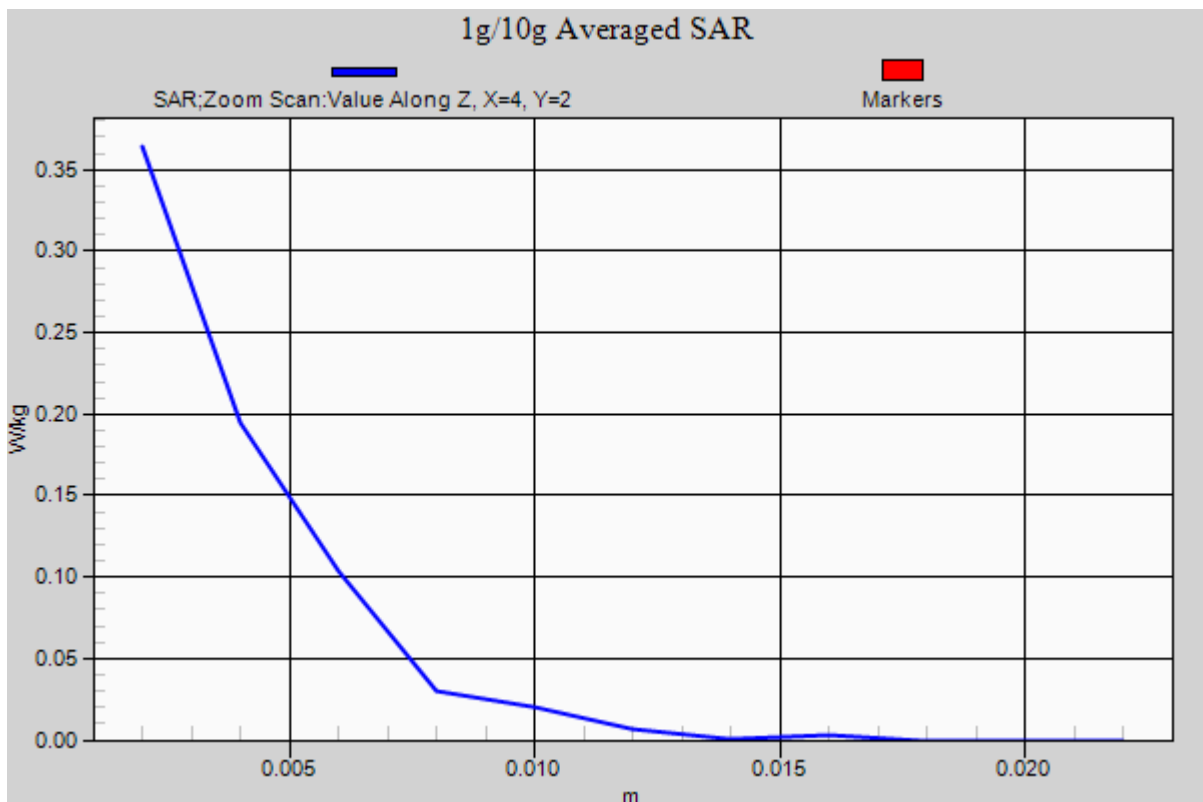
Area Scan (91x201x1): Interpolated grid: dx=10mm, dy=10mm

Zoom Scan (7x7x11)/Cube 0: Measurement grid: dx=4mm, dy=4mm, dz=2mm

Power Drift = 0.02 dB

Peak SAR (extrapolated) = 1.05 W/kg

SAR(1 g) = 0.190 W/kg; SAR(10 g) = 0.060 W/kg



DT&C Co., Ltd.

DUT: LG15Z96; Type: Notebook Computer

Communication System: WLAN_802.11n-HT40_5GHz (0); Frequency: 5795 MHz; Duty Cycle: 1:1
Medium parameters used: $f = 5795$ MHz; $\sigma = 6.006$ S/m; $\epsilon_r = 47.819$; $\rho = 1000$ kg/m³
Phantom section: Flat Section

DASY5 Configuration:

Probe: EX3DV4 - SN3933; ConvF(4.07, 4.07, 4.07); Calibrated: 9/29/2015; Electronics: DAE4 Sn1396
Phantom: ELI v5.0_2013_10_08; Type: QDIVA001BB; Serial: 1223
Measurement SW: DASY52, Version 52.8 (8); SEMCAD X Version 14.6.10 (7331)

Test Date: 2015-12-18; Ambient Temp; 20.7; Tissue Temp: 20.9

Touch from Body, Rear, W-LAN(5.8G 802.11n HT40) Ch. 159, Ant Internal, Aux

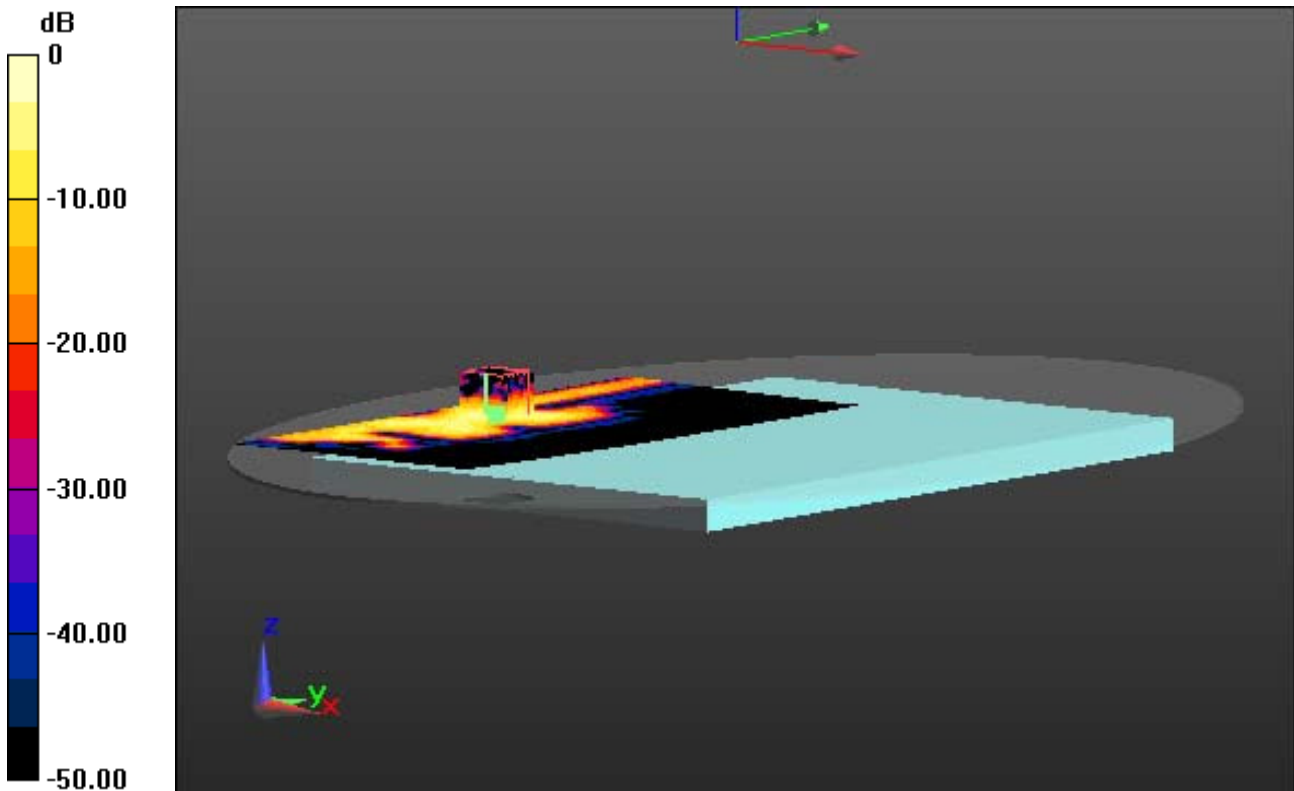
Area Scan (91x201x1): Interpolated grid: dx=10mm, dy=10mm

Zoom Scan (7x7x11)/Cube 0: Measurement grid: dx=4mm, dy=4mm, dz=2mm

Power Drift = -0.18 dB

Peak SAR (extrapolated) = 1.35 W/kg

SAR(1 g) = 0.321 W/kg; SAR(10 g) = 0.110 W/kg



0 dB = 0.690 W/kg

DT&C Co., Ltd.

DUT: LG15Z96; Type: Notebook Computer

Communication System: WLAN_802.11n-HT40_5GHz (0); Frequency: 5795 MHz; Duty Cycle: 1:1
Medium parameters used: $f = 5795$ MHz; $\sigma = 6.006$ S/m; $\epsilon_r = 47.819$; $\rho = 1000$ kg/m³
Phantom section: Flat Section

DASY5 Configuration:

Probe: EX3DV4 - SN3933; ConvF(4.07, 4.07, 4.07); Calibrated: 9/29/2015; Electronics: DAE4 Sn1396
Phantom: ELI v5.0_2013_10_08; Type: QDIVA001BB; Serial: 1223
Measurement SW: DASY52, Version 52.8 (8); SEMCAD X Version 14.6.10 (7331)

Test Date: 2015-12-18; Ambient Temp; 20.7; Tissue Temp: 20.9

Touch from Body, Rear, W-LAN(5.8G 802.11n HT40) Ch. 159, Ant Internal, Aux

With Enlarge Plot image

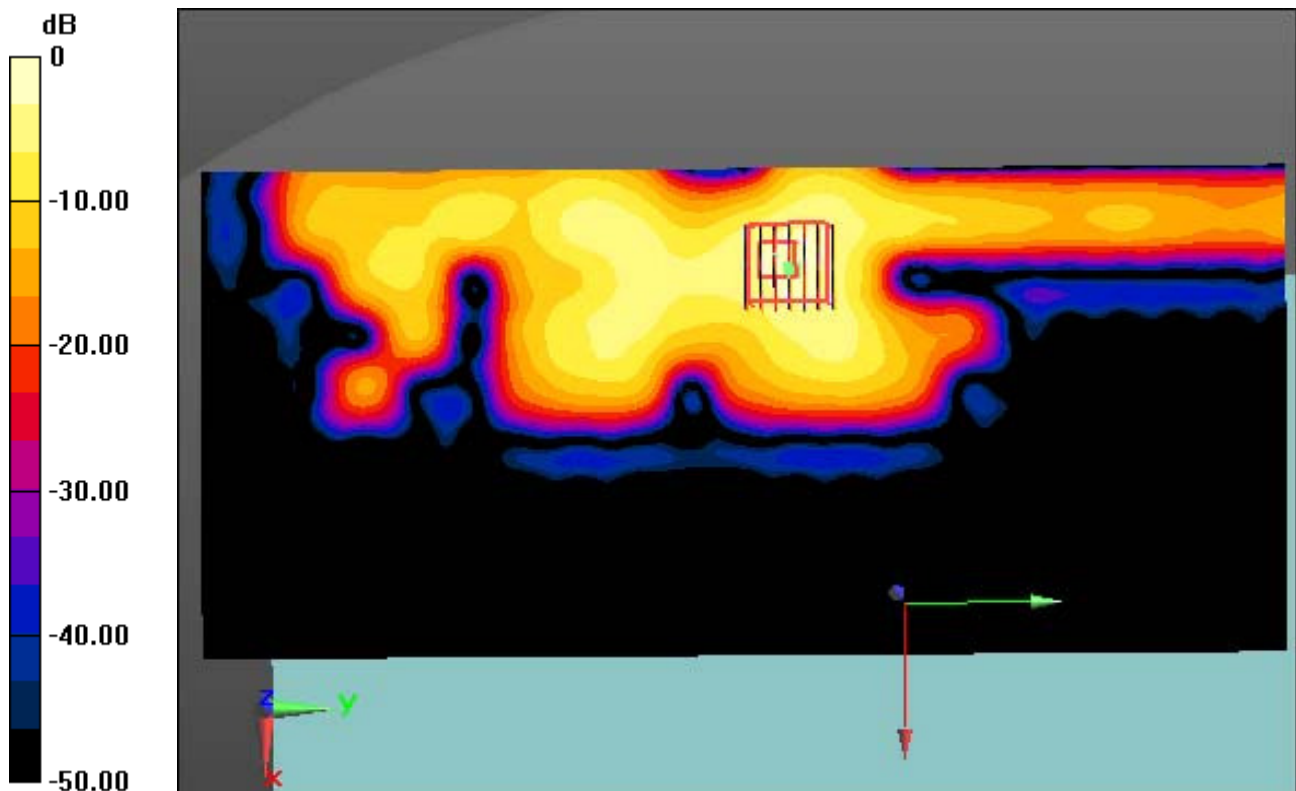
Area Scan (91x201x1): Interpolated grid: dx=10mm, dy=10mm

Zoom Scan (7x7x11)/Cube 0: Measurement grid: dx=4mm, dy=4mm, dz=2mm

Power Drift = -0.18 dB

Peak SAR (extrapolated) = 1.35 W/kg

SAR(1 g) = 0.321 W/kg; SAR(10 g) = 0.110 W/kg



0 dB = 0.690 W/kg

DT&C Co., Ltd.

DUT: LG15Z96; Type: Notebook Computer

Communication System: WLAN_802.11n-HT40_5GHz (0); Frequency: 5795 MHz; Duty Cycle: 1:1
Medium parameters used: $f = 5795$ MHz; $\sigma = 6.006$ S/m; $\epsilon_r = 47.819$; $\rho = 1000$ kg/m³
Phantom section: Flat Section

DASY5 Configuration:

Probe: EX3DV4 - SN3933; ConvF(4.07, 4.07, 4.07); Calibrated: 9/29/2015; Electronics: DAE4 Sn1396
Phantom: ELI v5.0_2013_10_08; Type: QDIVA001BB; Serial: 1223
Measurement SW: DASY52, Version 52.8 (8); SEMCAD X Version 14.6.10 (7331)

Test Date: 2015-12-18; Ambient Temp; 20.7; Tissue Temp: 20.9

Touch from Body, Rear, W-LAN(5.8G 802.11n HT40) Ch. 159, Ant Internal, Aux

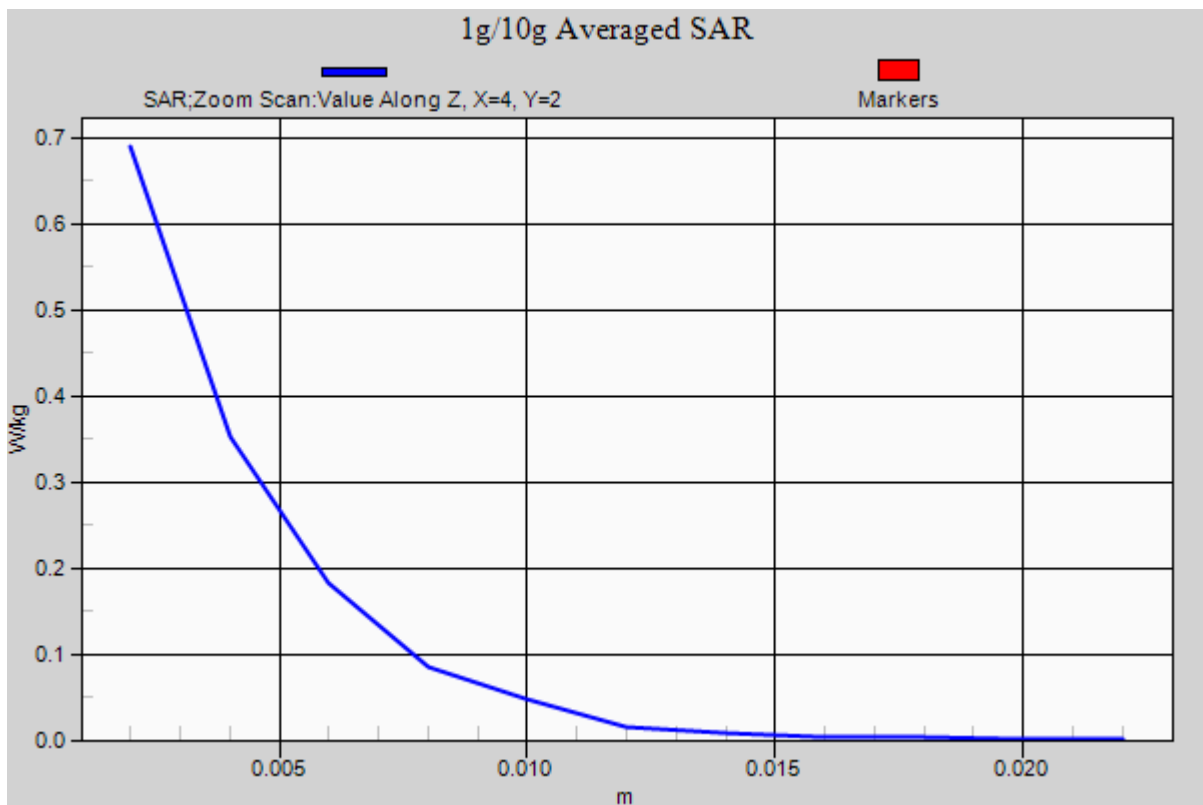
Area Scan (91x201x1): Interpolated grid: dx=10mm, dy=10mm

Zoom Scan (7x7x11)/Cube 0: Measurement grid: dx=4mm, dy=4mm, dz=2mm

Power Drift = -0.18 dB

Peak SAR (extrapolated) = 1.35 W/kg

SAR(1 g) = 0.321 W/kg; SAR(10 g) = 0.110 W/kg



DT&C Co., Ltd.

DUT: LG15Z96; Type: Notebook Computer

Communication System: W-LAN_5300 (0); Frequency: 5300 MHz; Duty Cycle: 1:1
Medium parameters used: $f = 5300$ MHz; $\sigma = 5.378$ S/m; $\epsilon_r = 49.307$; $\rho = 1000$ kg/m³
Phantom section: Flat Section

DASY5 Configuration:

Probe: EX3DV4 - SN3933; ConvF(4.65, 4.65, 4.65); Calibrated: 9/29/2015; Electronics: DAE4 Sn1396
Phantom: ELI v5.0_2013_10_08; Type: QDIVA001BB; Serial: 1223
Measurement SW: DASY52, Version 52.8 (8); SEMCAD X Version 14.6.10 (7331)

Test Date: 2015-12-17; Ambient Temp; 20.5; Tissue Temp: 21.0

Touch from Body, Rear, W-LAN(5.3G 802.11n HT20) Ch. 60, Ant Internal, MIMO

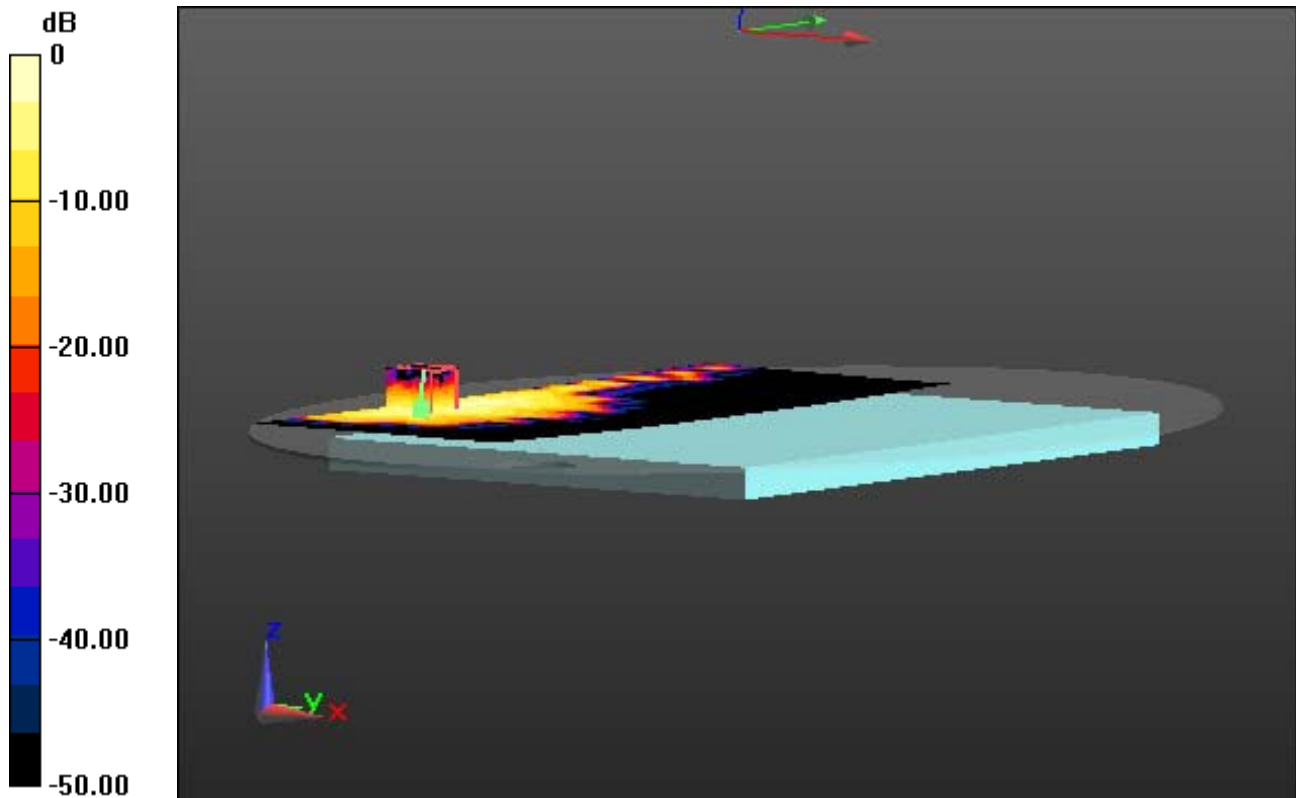
Area Scan (91x261x1): Interpolated grid: dx=10mm, dy=10mm

Zoom Scan (7x7x11)/Cube 0: Measurement grid: dx=4mm, dy=4mm, dz=2mm

Power Drift = 0.04 dB

Peak SAR (extrapolated) = 1.85 W/kg

SAR(1 g) = 0.394 W/kg; SAR(10 g) = 0.136 W/kg



0 dB = 0.755 W/kg

DT&C Co., Ltd.

DUT: LG15Z96; Type: Notebook Computer

Communication System: W-LAN_5300 (0); Frequency: 5300 MHz; Duty Cycle: 1:1
Medium parameters used: $f = 5300$ MHz; $\sigma = 5.378$ S/m; $\epsilon_r = 49.307$; $\rho = 1000$ kg/m³
Phantom section: Flat Section

DASY5 Configuration:

Probe: EX3DV4 - SN3933; ConvF(4.65, 4.65, 4.65); Calibrated: 9/29/2015; Electronics: DAE4 Sn1396
Phantom: ELI v5.0_2013_10_08; Type: QDIVA001BB; Serial: 1223
Measurement SW: DASY52, Version 52.8 (8); SEMCAD X Version 14.6.10 (7331)

Test Date: 2015-12-17; Ambient Temp; 20.5; Tissue Temp: 21.0

Touch from Body, Rear, W-LAN(5.3G 802.11n HT20) Ch. 60, Ant Internal, MIMO

With Enlarge Plot image

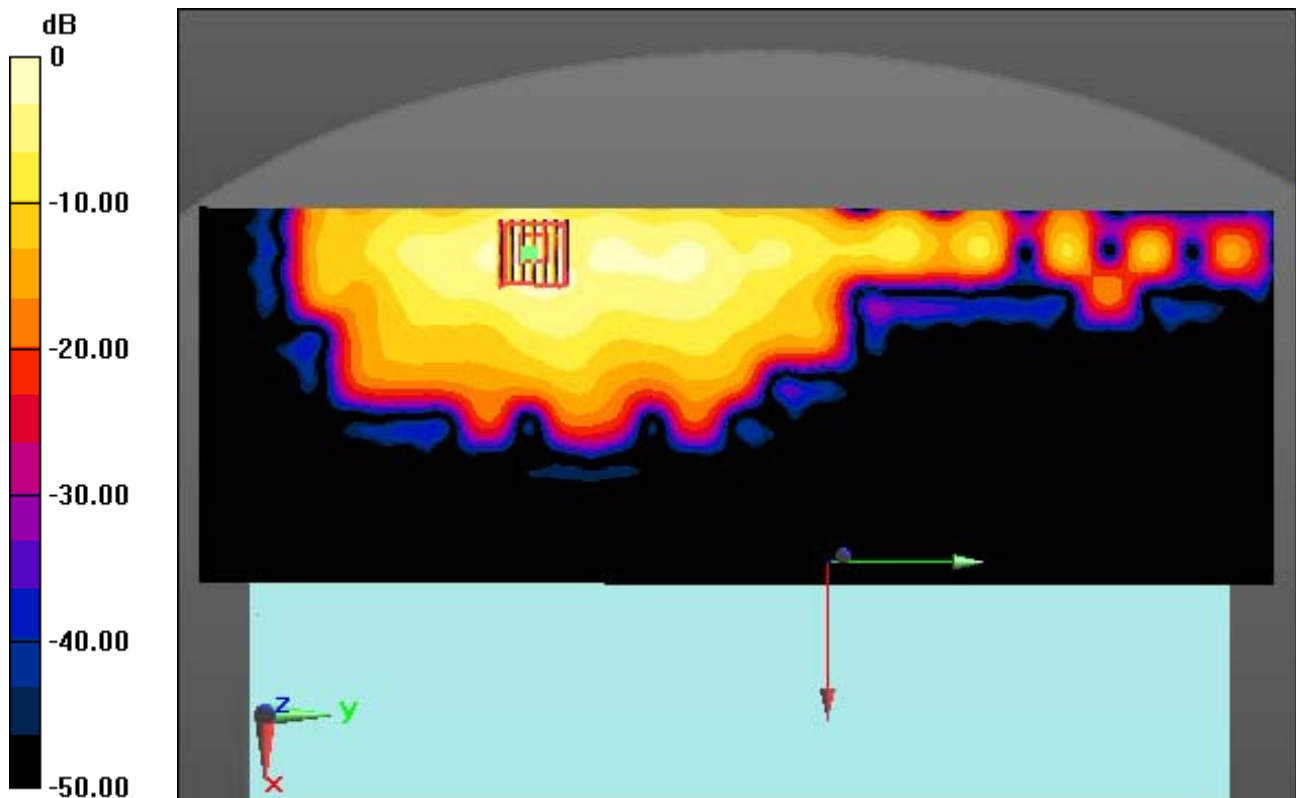
Area Scan (91x261x1): Interpolated grid: dx=10mm, dy=10mm

Zoom Scan (7x7x11)/Cube 0: Measurement grid: dx=4mm, dy=4mm, dz=2mm

Power Drift = 0.04 dB

Peak SAR (extrapolated) = 1.85 W/kg

SAR(1 g) = 0.394 W/kg; SAR(10 g) = 0.136 W/kg



0 dB = 0.755 W/kg

DT&C Co., Ltd.

DUT: LG15Z96; Type: Notebook Computer

Communication System: W-LAN_5300 (0); Frequency: 5300 MHz; Duty Cycle: 1:1
Medium parameters used: $f = 5300$ MHz; $\sigma = 5.378$ S/m; $\epsilon_r = 49.307$; $\rho = 1000$ kg/m³
Phantom section: Flat Section

DASY5 Configuration:

Probe: EX3DV4 - SN3933; ConvF(4.65, 4.65, 4.65); Calibrated: 9/29/2015; Electronics: DAE4 Sn1396
Phantom: ELI v5.0_2013_10_08; Type: QDIVA001BB; Serial: 1223
Measurement SW: DASY52, Version 52.8 (8); SEMCAD X Version 14.6.10 (7331)

Test Date: 2015-12-17; Ambient Temp; 20.5; Tissue Temp: 21.0

Touch from Body, Rear, W-LAN(5.3G 802.11n HT20) Ch. 60, Ant Internal, MIMO

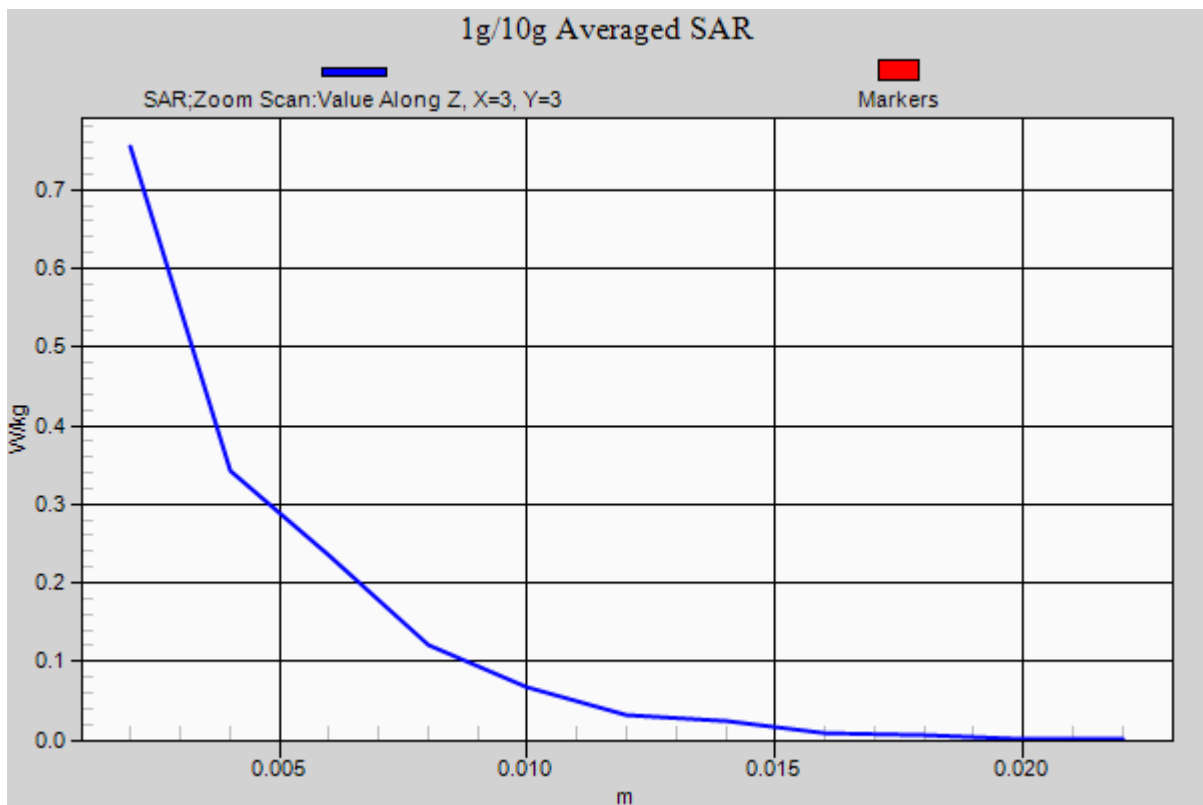
Area Scan (91x261x1): Interpolated grid: dx=10mm, dy=10mm

Zoom Scan (7x7x11)/Cube 0: Measurement grid: dx=4mm, dy=4mm, dz=2mm

Power Drift = 0.04 dB

Peak SAR (extrapolated) = 1.85 W/kg

SAR(1 g) = 0.394 W/kg; SAR(10 g) = 0.136 W/kg



DT&C Co., Ltd.

DUT: LG15Z96; Type: Notebook Computer

Communication System: 802.11ac_HT80 (0); Frequency: 5590 MHz; Duty Cycle: 1:1
Medium parameters used: $f = 5590$ MHz; $\sigma = 5.717$ S/m; $\epsilon_r = 48.162$; $\rho = 1000$ kg/m³
Phantom section: Flat Section

DASY5 Configuration:

Probe: EX3DV4 - SN3933; ConvF(3.98, 3.98, 3.98); Calibrated: 9/29/2015; Electronics: DAE4 Sn1396
Phantom: ELI v5.0_2013_10_08; Type: QDIVA001BB; Serial: 1223
Measurement SW: DASY52, Version 52.8 (8); SEMCAD X Version 14.6.10 (7331)

Test Date: 2015-12-18; Ambient Temp; 20.7; Tissue Temp: 20.9

Touch from Body, Rear, W-LAN(5.6G 802.11ac VHT80) Ch. 138, Ant Internal, MIMO

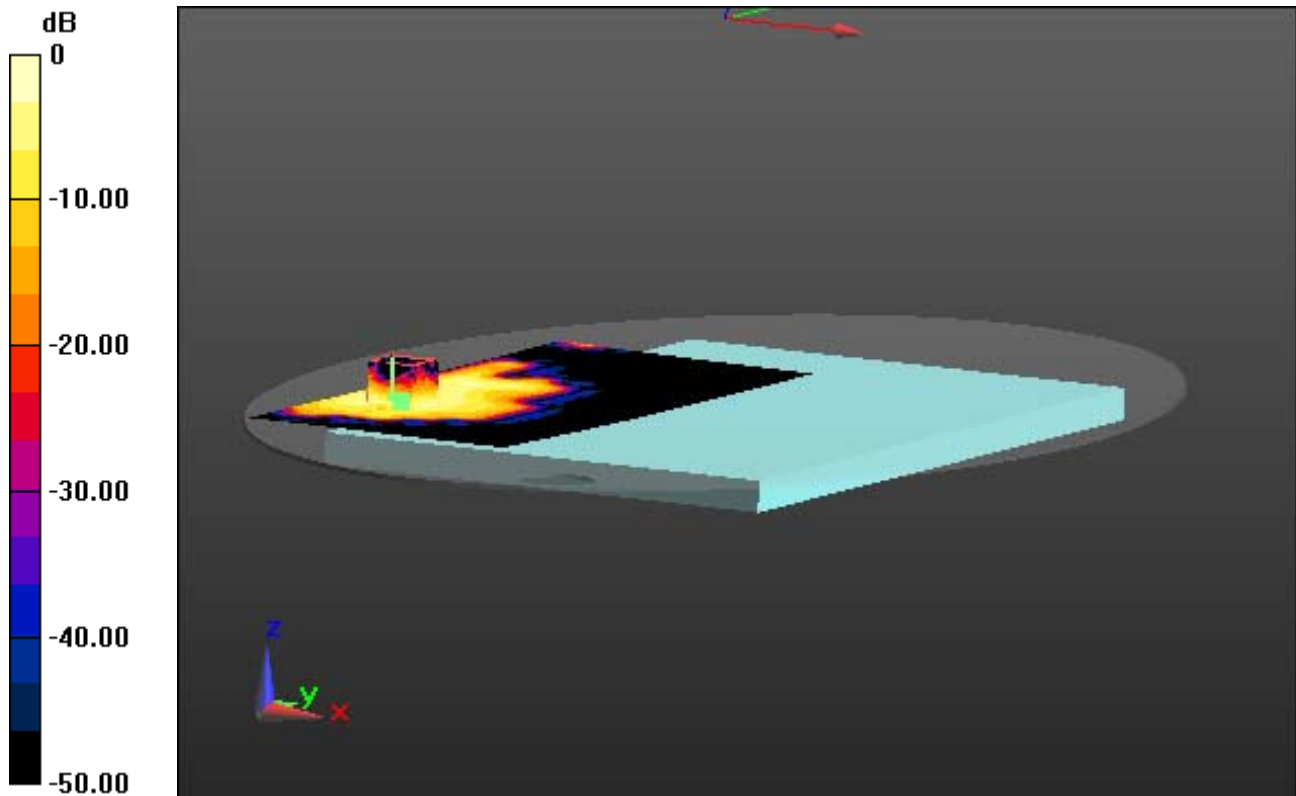
Area Scan (91x201x1): Interpolated grid: dx=10mm, dy=10mm

Zoom Scan (7x7x11)/Cube 0: Measurement grid: dx=4mm, dy=4mm, dz=2mm

Power Drift = -0.07 dB

Peak SAR (extrapolated) = 1.25 W/kg

SAR(1 g) = 0.305 W/kg; SAR(10 g) = 0.120 W/kg



0 dB = 0.600 W/kg

DT&C Co., Ltd.

DUT: LG15Z96; Type: Notebook Computer

Communication System: 802.11ac_HT80 (0); Frequency: 5590 MHz; Duty Cycle: 1:1
Medium parameters used: $f = 5590$ MHz; $\sigma = 5.717$ S/m; $\epsilon_r = 48.162$; $\rho = 1000$ kg/m³
Phantom section: Flat Section

DASY5 Configuration:

Probe: EX3DV4 - SN3933; ConvF(3.98, 3.98, 3.98); Calibrated: 9/29/2015; Electronics: DAE4 Sn1396
Phantom: ELI v5.0_2013_10_08; Type: QDIVA001BB; Serial: 1223
Measurement SW: DASY52, Version 52.8 (8); SEMCAD X Version 14.6.10 (7331)

Test Date: 2015-12-18; Ambient Temp; 20.7; Tissue Temp: 20.9

Touch from Body, Rear, W-LAN(5.6G 802.11ac VHT80) Ch. 138, Ant Internal, MIMO

With Enlarge Plot image

Area Scan (91x201x1): Interpolated grid: dx=10mm, dy=10mm

Zoom Scan (7x7x11)/Cube 0: Measurement grid: dx=4mm, dy=4mm, dz=2mm

Power Drift = -0.07 dB

Peak SAR (extrapolated) = 1.25 W/kg

SAR(1 g) = 0.305 W/kg; SAR(10 g) = 0.120 W/kg

The figure is a 2D heatmap representing the Specific Absorption Rate (SAR) distribution. The vertical axis on the left is labeled 'dB' and ranges from 0 at the top to -50.00 at the bottom, with major ticks at 0, -10.00, -20.00, -30.00, -40.00, and -50.00. The plot area shows a central region of high SAR (yellow and red) that tapers off into lower SAR regions (orange, red, blue, and black). A small grid of vertical lines is visible in the center of the high-intensity region. At the bottom left of the plot, there is a 3D coordinate system with x, y, and z axes. At the bottom right, there is a red vertical line with a green arrow pointing to the right, indicating a specific measurement point or direction.

0 dB = 0.600 W/kg

A11

DT&C Co., Ltd.

DUT: LG15Z96; Type: Notebook Computer

Communication System: 802.11ac_HT80 (0); Frequency: 5590 MHz; Duty Cycle: 1:1
Medium parameters used: $f = 5590$ MHz; $\sigma = 5.717$ S/m; $\epsilon_r = 48.162$; $\rho = 1000$ kg/m³
Phantom section: Flat Section

DASY5 Configuration:

Probe: EX3DV4 - SN3933; ConvF(3.98, 3.98, 3.98); Calibrated: 9/29/2015; Electronics: DAE4 Sn1396
Phantom: ELI v5.0_2013_10_08; Type: QDIVA001BB; Serial: 1223
Measurement SW: DASY52, Version 52.8 (8); SEMCAD X Version 14.6.10 (7331)

Test Date: 2015-12-18; Ambient Temp; 20.7; Tissue Temp: 20.9

Touch from Body, Rear, W-LAN(5.6G 802.11ac VHT80) Ch. 138, Ant Internal, MIMO

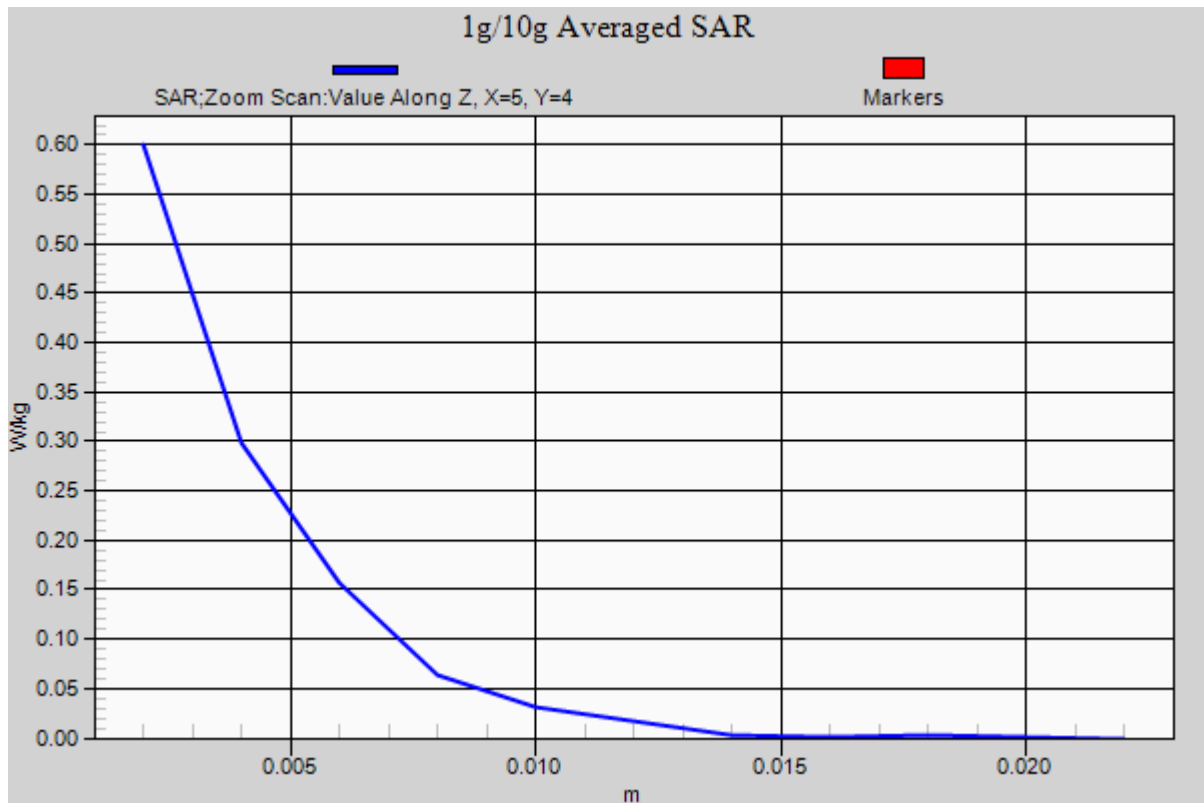
Area Scan (91x201x1): Interpolated grid: dx=10mm, dy=10mm

Zoom Scan (7x7x11)/Cube 0: Measurement grid: dx=4mm, dy=4mm, dz=2mm

Power Drift = -0.07 dB

Peak SAR (extrapolated) = 1.25 W/kg

SAR(1 g) = 0.305 W/kg; SAR(10 g) = 0.120 W/kg



DT&C Co., Ltd.

DUT: LG15Z96; Type: Notebook Computer

Communication System: W-LAN_5800 (0); Frequency: 5785 MHz; Duty Cycle: 1:1
Medium parameters used: $f = 5785$ MHz; $\sigma = 5.99$ S/m; $\epsilon_r = 47.839$; $\rho = 1000$ kg/m³
Phantom section: Flat Section

DASY5 Configuration:

Probe: EX3DV4 - SN3933; ConvF(4.07, 4.07, 4.07); Calibrated: 9/29/2015; Electronics: DAE4 Sn1396
Phantom: ELI v5.0_2013_10_08; Type: QDIVA001BB; Serial: 1223
Measurement SW: DASY52, Version 52.8 (8); SEMCAD X Version 14.6.10 (7331)

Test Date: 2015-12-18; Ambient Temp; 20.7; Tissue Temp: 20.9

Touch from Body, Rear, W-LAN(5.8G 802.11n HT20) Ch. 157, Ant Internal, MIMO

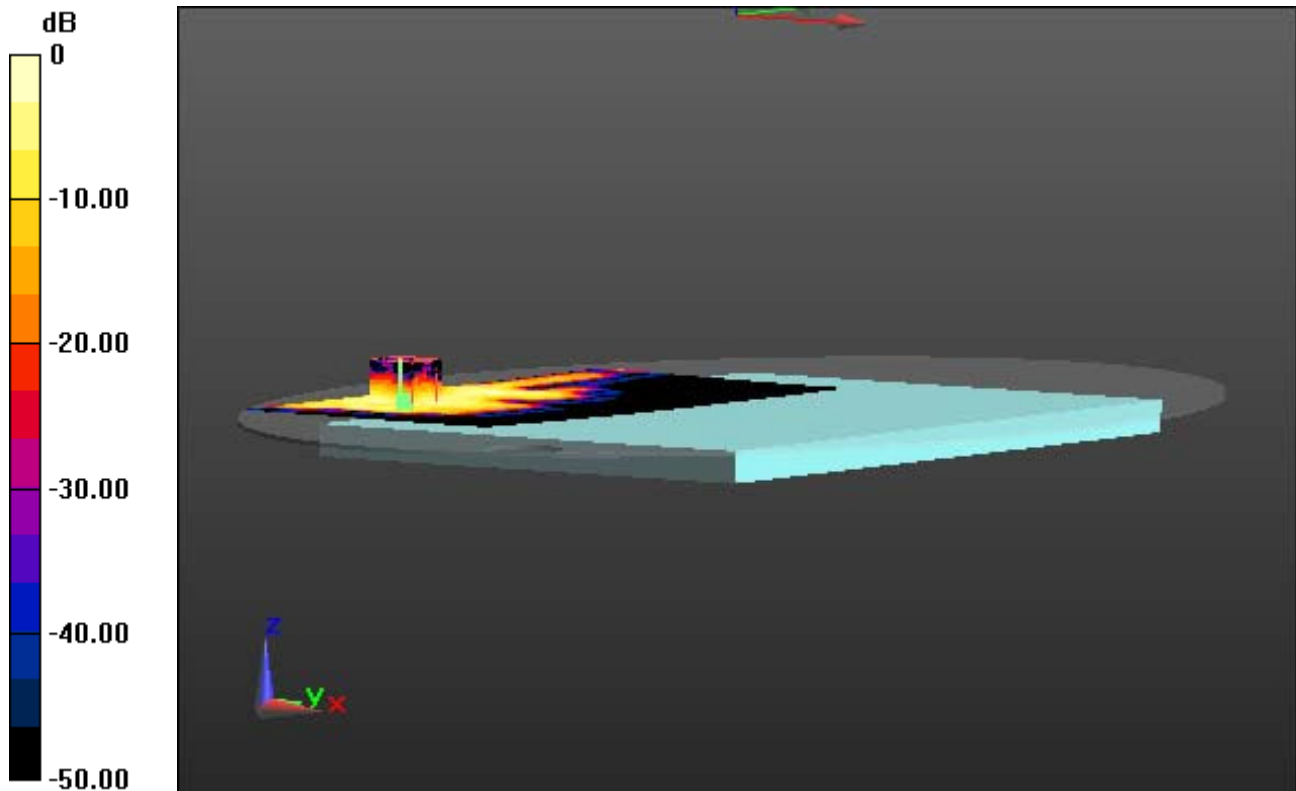
Area Scan (91x201x1): Interpolated grid: dx=10mm, dy=10mm

Zoom Scan (7x7x11)/Cube 0: Measurement grid: dx=4mm, dy=4mm, dz=2mm

Power Drift = -0.16 dB

Peak SAR (extrapolated) = 1.43 W/kg

SAR(1 g) = 0.357 W/kg; SAR(10 g) = 0.137 W/kg



0 dB = 0.717 W/kg

DT&C Co., Ltd.

DUT: LG15Z96; Type: Notebook Computer

Communication System: W-LAN_5800 (0); Frequency: 5785 MHz; Duty Cycle: 1:1
Medium parameters used: $f = 5785$ MHz; $\sigma = 5.99$ S/m; $\epsilon_r = 47.839$; $\rho = 1000$ kg/m³
Phantom section: Flat Section

DASY5 Configuration:

Probe: EX3DV4 - SN3933; ConvF(4.07, 4.07, 4.07); Calibrated: 9/29/2015; Electronics: DAE4 Sn1396
Phantom: ELI v5.0_2013_10_08; Type: QDIVA001BB; Serial: 1223
Measurement SW: DASY52, Version 52.8 (8); SEMCAD X Version 14.6.10 (7331)

Test Date: 2015-12-18; Ambient Temp; 20.7; Tissue Temp: 20.9

Touch from Body, Rear, W-LAN(5.8G 802.11n HT20) Ch. 157, Ant Internal, MIMO

With Enlarge Plot image

Area Scan (91x201x1): Interpolated grid: dx=10mm, dy=10mm

Zoom Scan (7x7x11)/Cube 0: Measurement grid: dx=4mm, dy=4mm, dz=2mm

Power Drift = -0.16 dB

Peak SAR (extrapolated) = 1.43 W/kg

SAR(1 g) = 0.357 W/kg; SAR(10 g) = 0.137 W/kg

The figure is a 2D color plot representing the SAR distribution. The vertical axis on the left is labeled 'dB' and ranges from 0 at the top to -50.00 at the bottom, with major ticks at 0, -10.00, -20.00, -30.00, -40.00, and -50.00. The plot area shows a complex field of colors, with the highest intensity (yellow) concentrated in a central region. A red rectangular box is overlaid on this high-intensity area. At the bottom left of the plot, a 3D coordinate system is shown with a red 'x' axis pointing down, a green 'y' axis pointing right, and a blue 'z' axis pointing up. A red arrow points from the origin of this coordinate system towards the center of the high-intensity region. Another red arrow points from the center of the high-intensity region towards the bottom right. A green arrow points from the center of the high-intensity region towards the right.

0 dB = 0.717 W/kg

A12

DT&C Co., Ltd.

DUT: LG15Z96; Type: Notebook Computer

Communication System: W-LAN_5800 (0); Frequency: 5785 MHz; Duty Cycle: 1:1
Medium parameters used: $f = 5785$ MHz; $\sigma = 5.99$ S/m; $\epsilon_r = 47.839$; $\rho = 1000$ kg/m³
Phantom section: Flat Section

DASY5 Configuration:

Probe: EX3DV4 - SN3933; ConvF(4.07, 4.07, 4.07); Calibrated: 9/29/2015; Electronics: DAE4 Sn1396
Phantom: ELI v5.0_2013_10_08; Type: QDIVA001BB; Serial: 1223
Measurement SW: DASY52, Version 52.8 (8); SEMCAD X Version 14.6.10 (7331)

Test Date: 2015-12-18; Ambient Temp; 20.7; Tissue Temp: 20.9

Touch from Body, Rear, W-LAN(5.8G 802.11n HT20) Ch. 157, Ant Internal, MIMO

Area Scan (91x201x1): Interpolated grid: dx=10mm, dy=10mm

Zoom Scan (7x7x11)/Cube 0: Measurement grid: dx=4mm, dy=4mm, dz=2mm

Power Drift = -0.16 dB

Peak SAR (extrapolated) = 1.43 W/kg

SAR(1 g) = 0.357 W/kg; SAR(10 g) = 0.137 W/kg

