

EUT Internal Photos

Figure 7  
Internal View (Removed Cover)

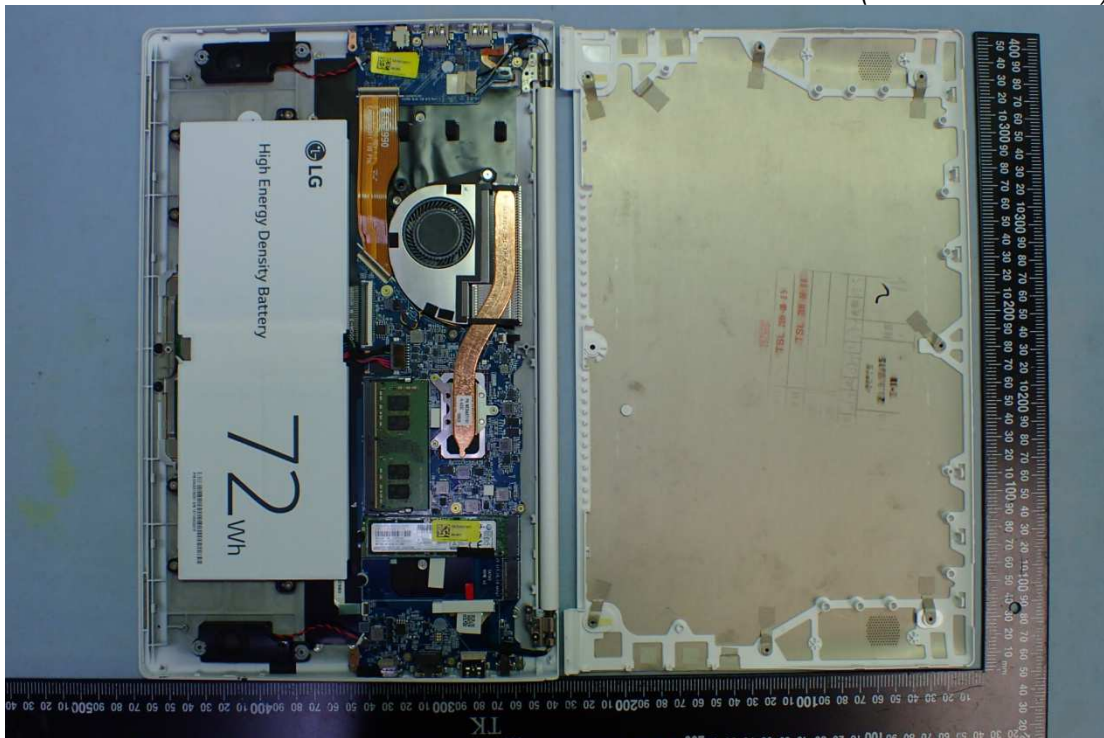


Figure 8  
Internal View



Figure 9  
Internal View (Fan)

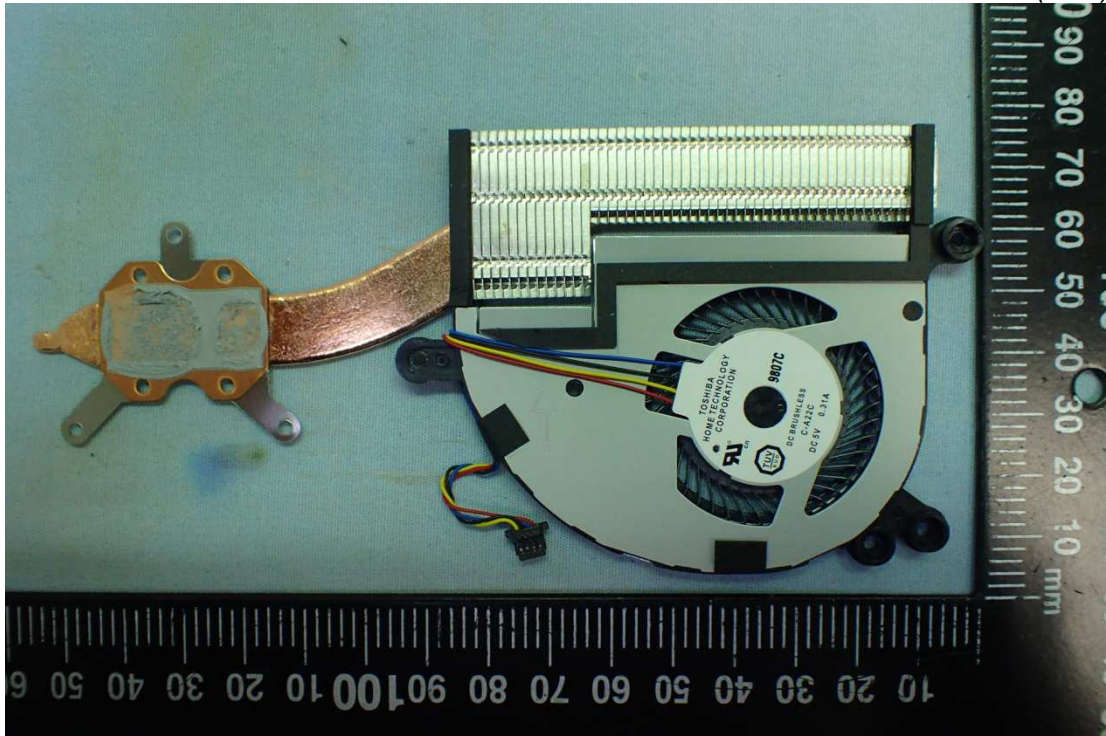


Figure 10  
Internal View (Removed Touch Pad)

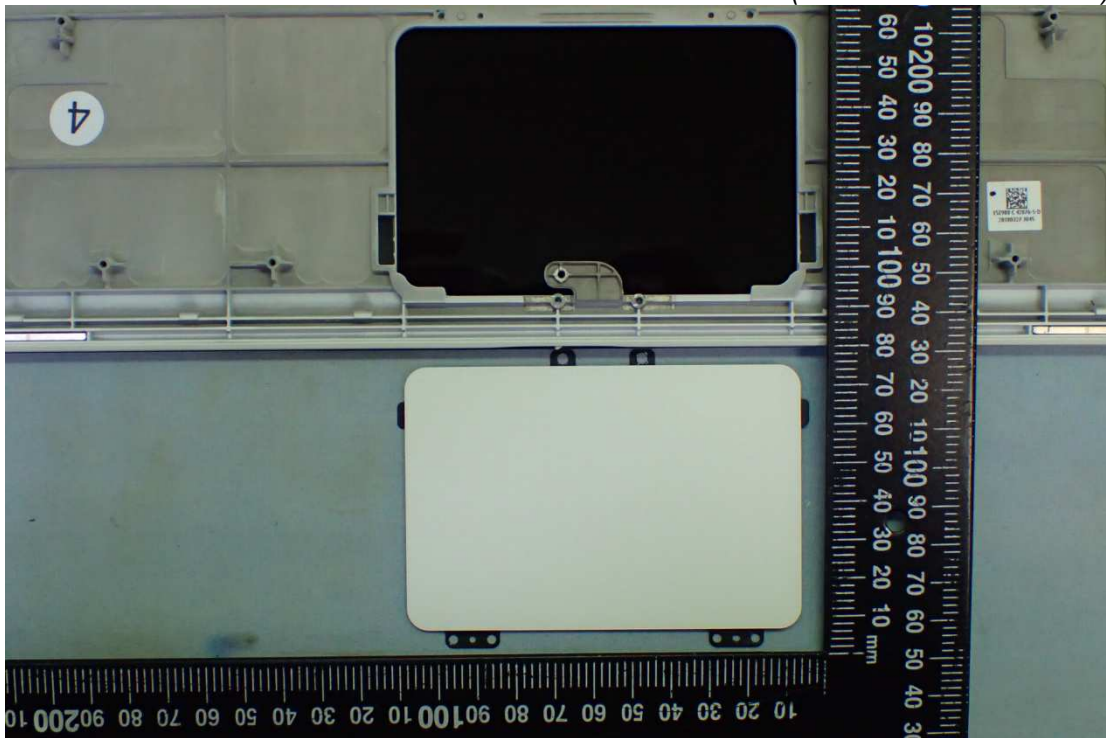


Figure 11  
M/N: LP156WFA(SP)(G1) (With touch),LCD Panel, Front View

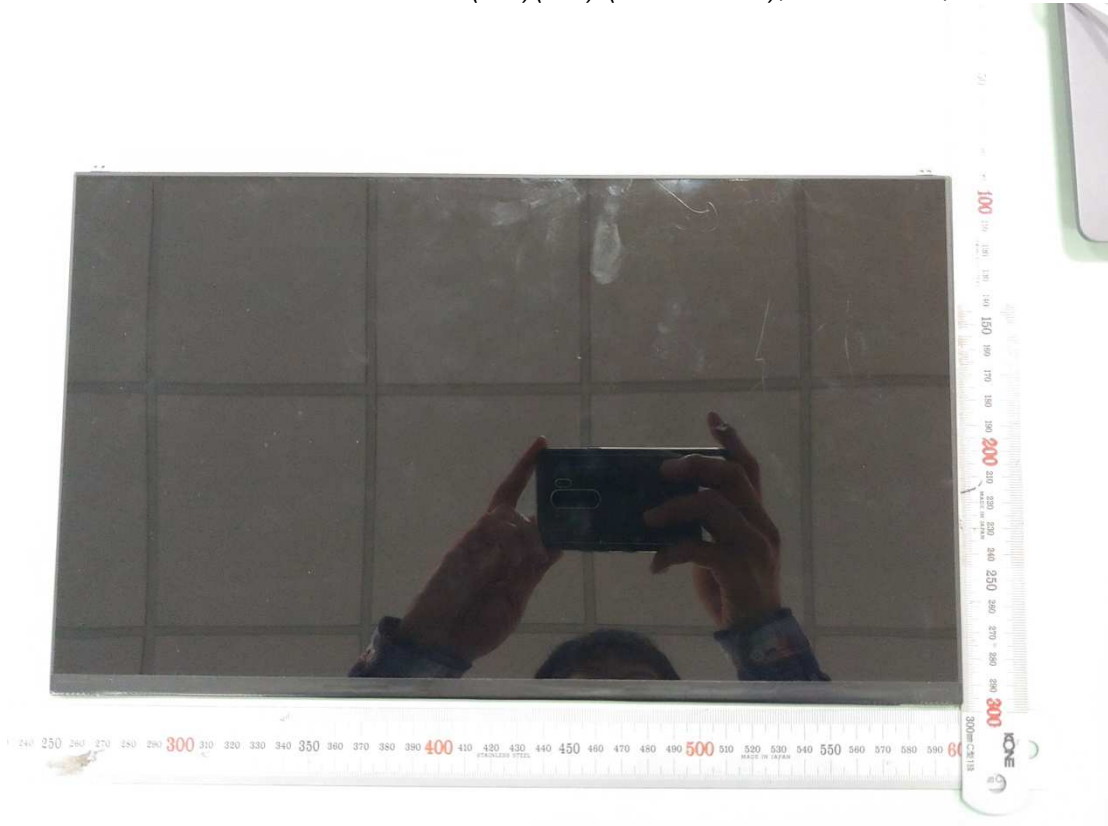


Figure 12  
M/N: LP156WFA(SP)(G1) (With touch),LCD Panel, Back View/ Label View



Figure 13  
M/N: LP156WFC(SP)(Y1) (Normal Non touch),LCD Panel, Front View



Figure 14  
M/N: LP156WFC(SP)(Y1) (Normal Non touch),LCD Panel, Back View/ Label View



Figure 15  
Main Board, Front View

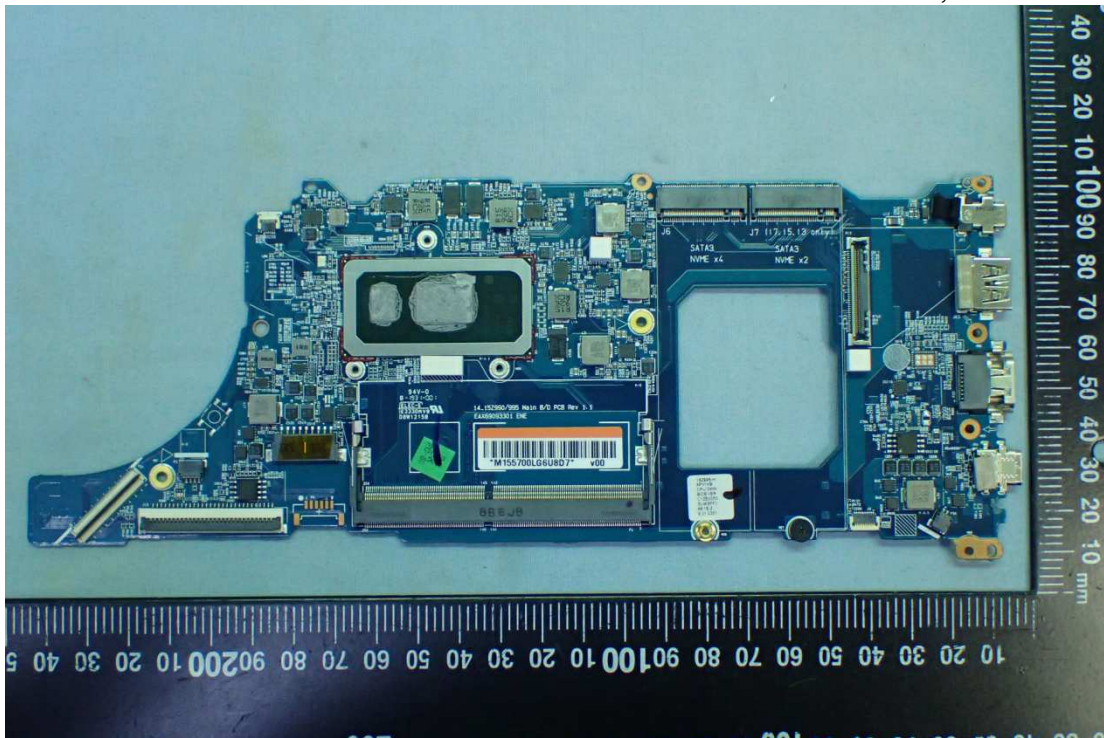


Figure 16  
Main Board, Back View

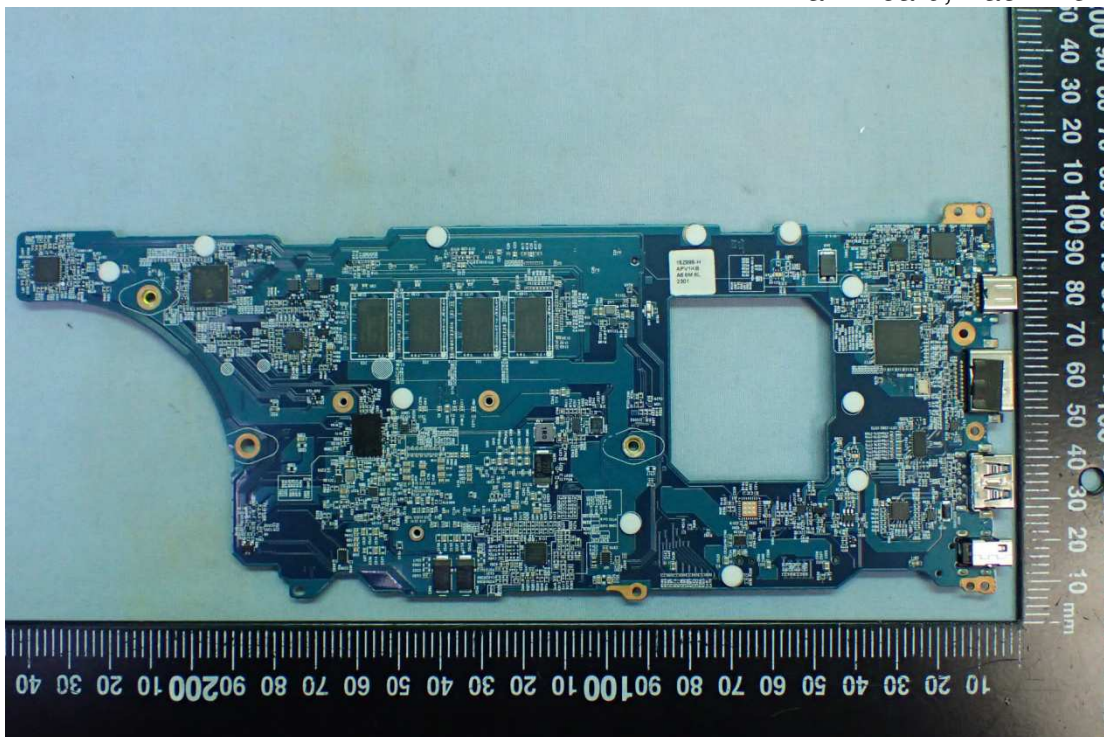


Figure 17  
SUB Board, Front View

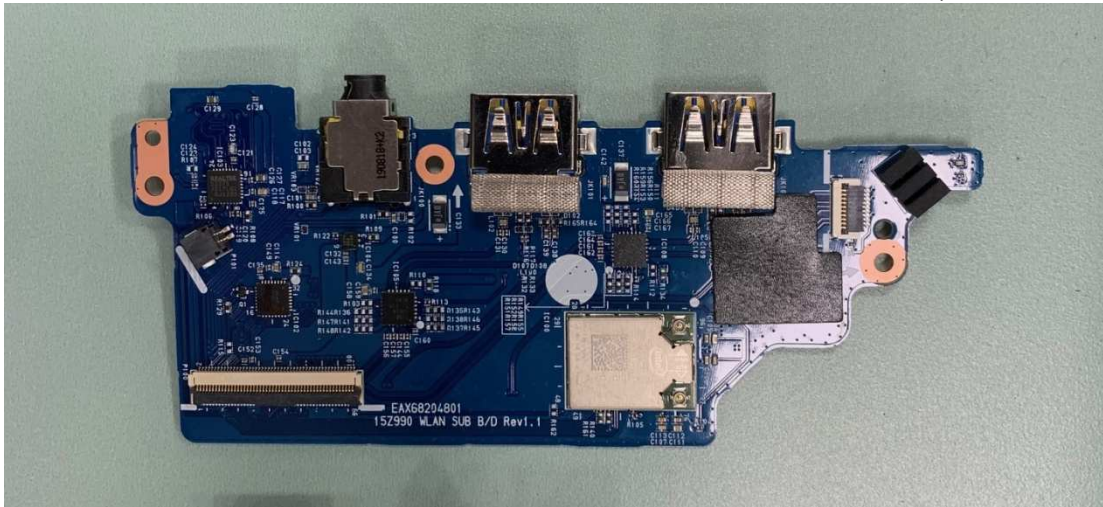


Figure 18  
SUB Board, Back View

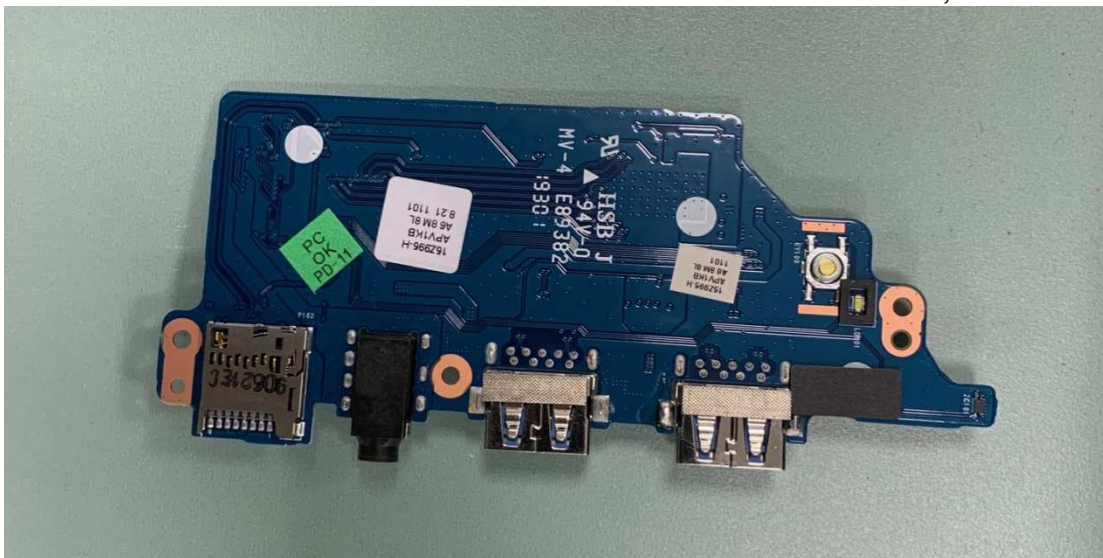


Figure 19  
WLAN Combo Card View



Figure 20  
WLAN Combo Card, Remove Cover

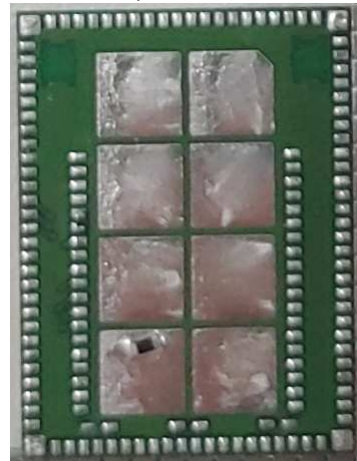


Figure 21  
LG (LUXSHARE-ICT), M/N 15Z980 ANTENNA, WLAN Combo Antenna Position



Figure 22  
LG (LUXSHARE-ICT), M/N 15Z980 ANTENNA ASM WLAN Combo Antenna

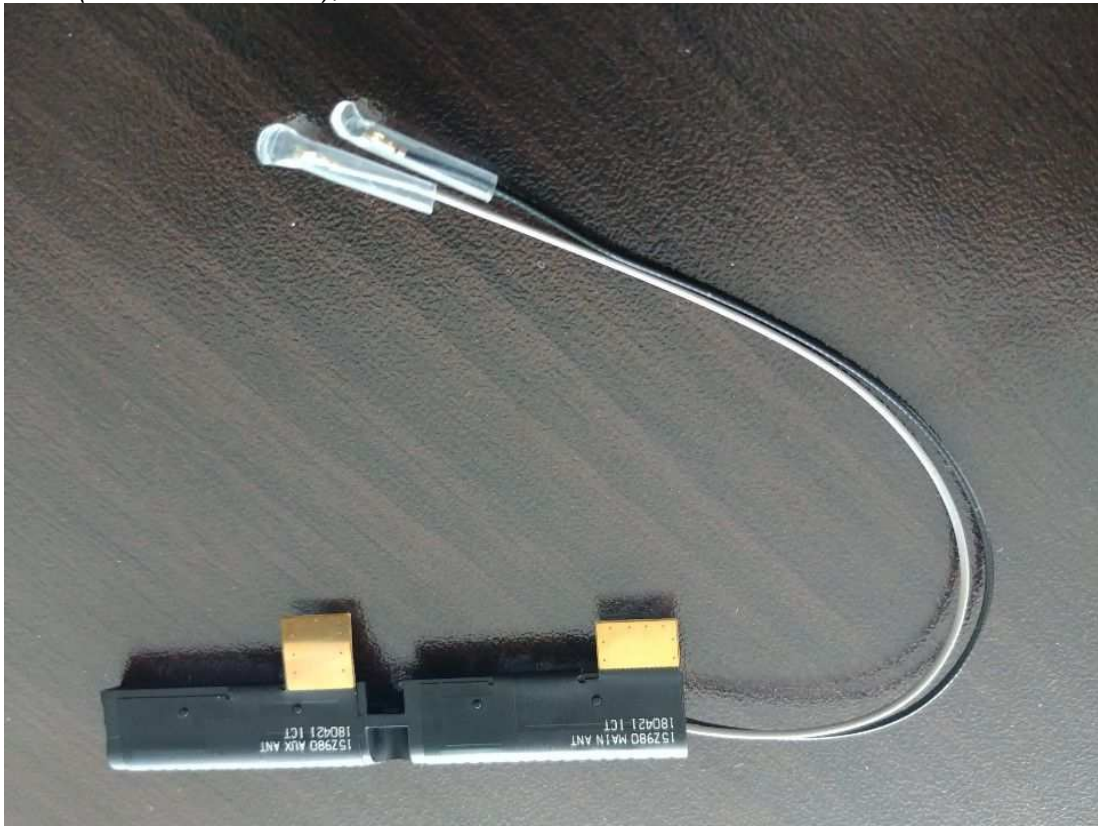


Figure 23  
i7-10510U, CPU View

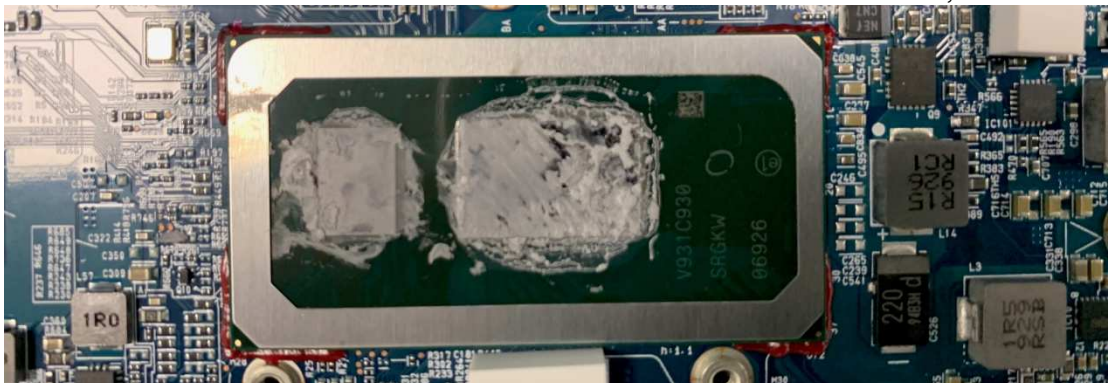


Figure 24  
i5-10210U, CPU View

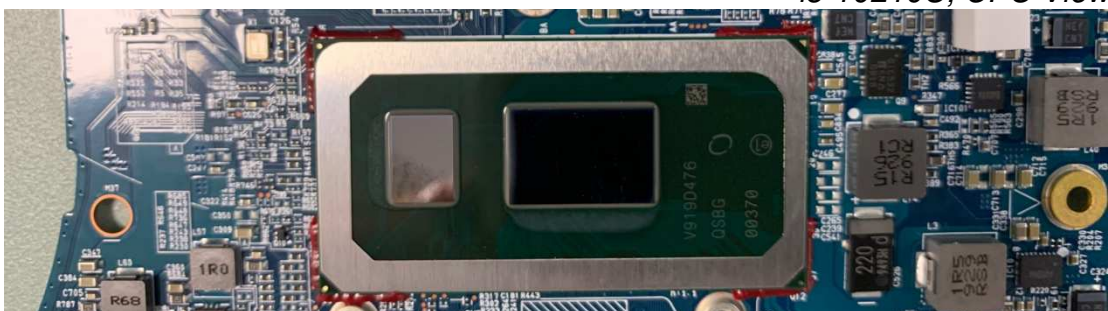


Figure 25  
Battery Pack, Front View

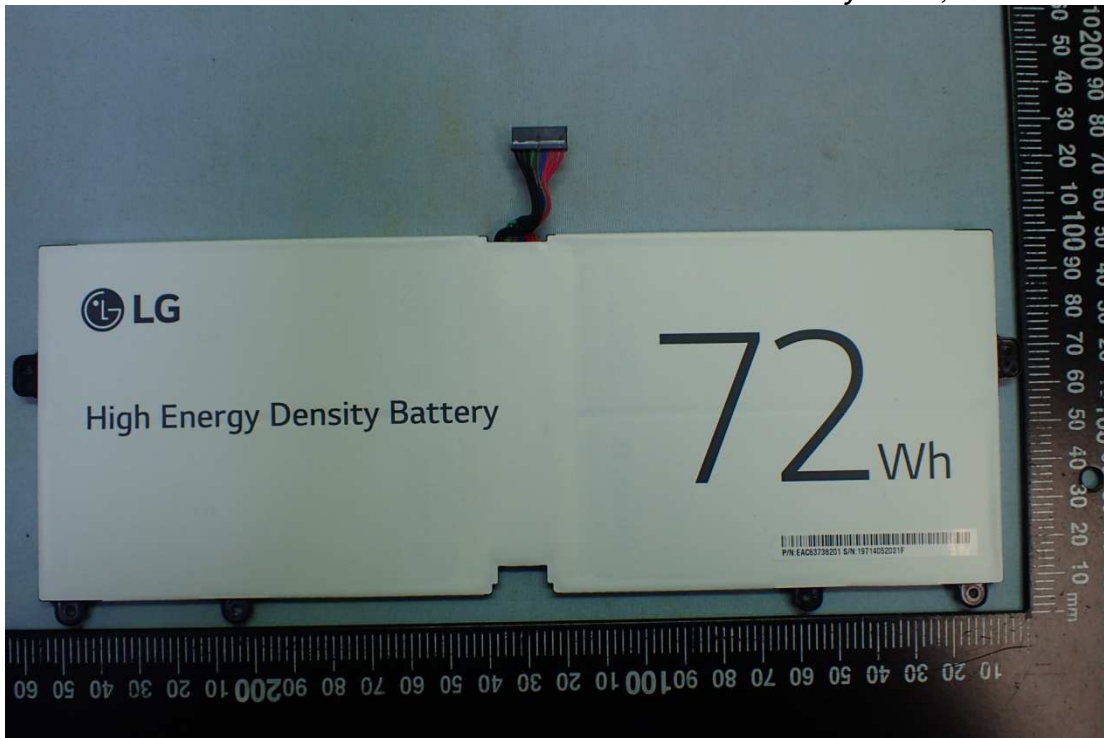


Figure 26  
Battery Pack, Back View

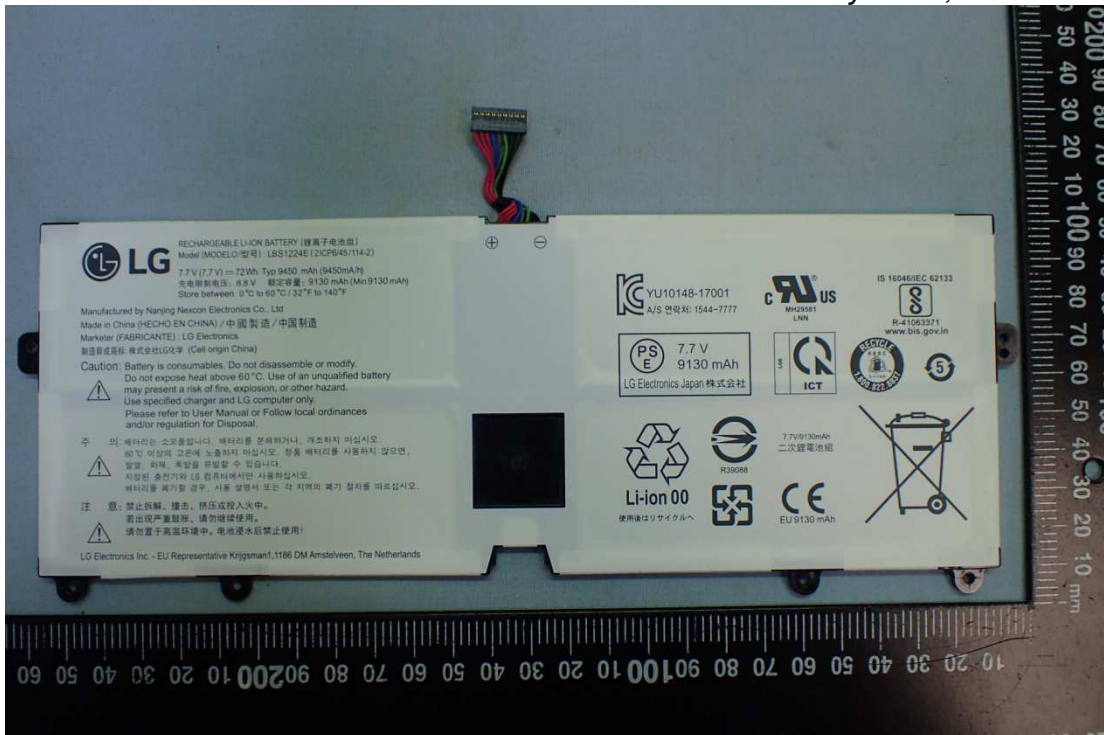


Figure 27  
SSD (256GB), Samsung, Front View

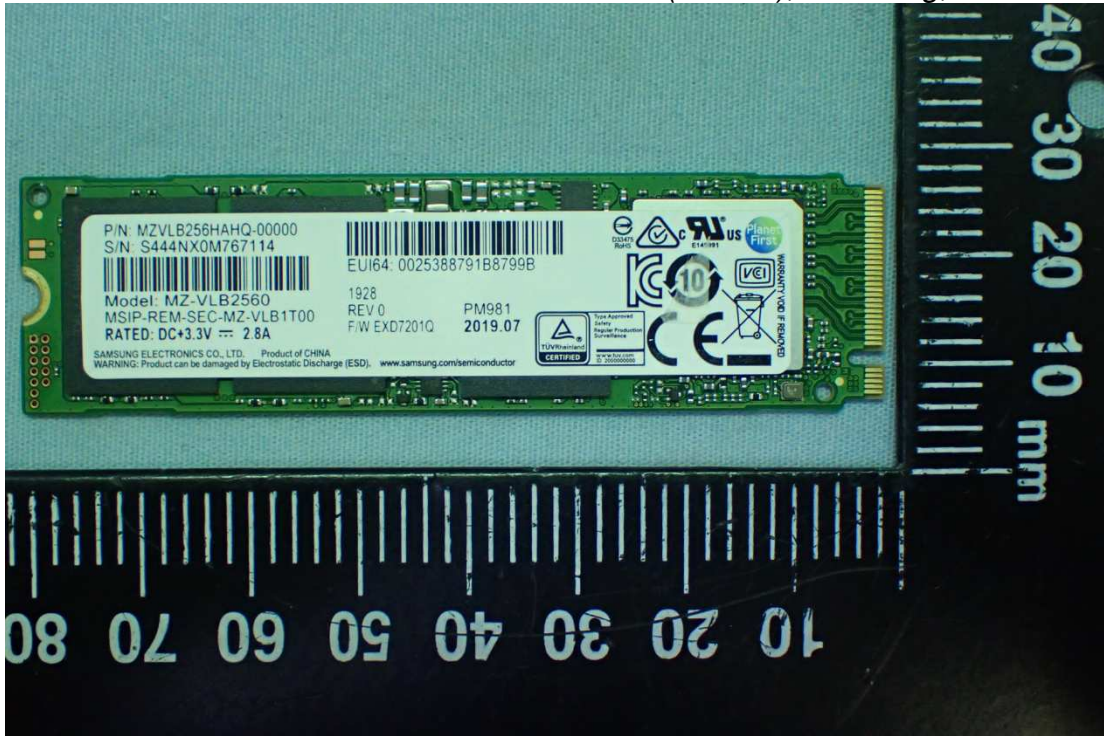


Figure 28  
SSD (256GB), Samsung, Back View

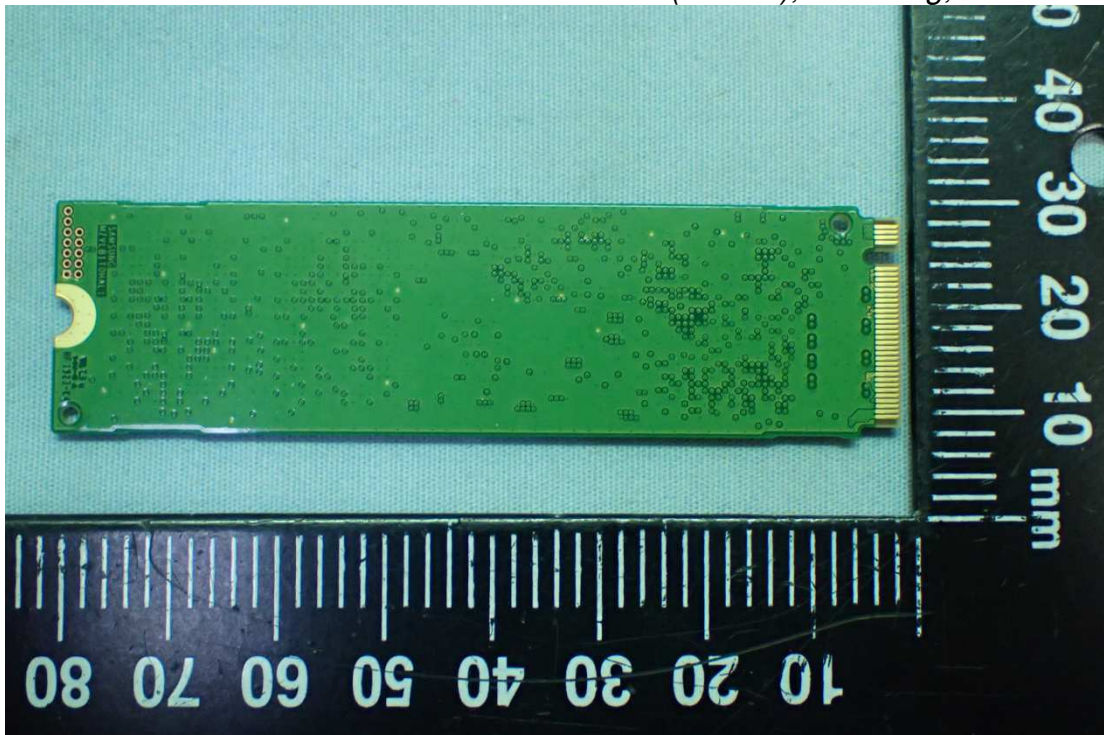


Figure 29  
RAM (8GB) (On Card), Samsung, Front View

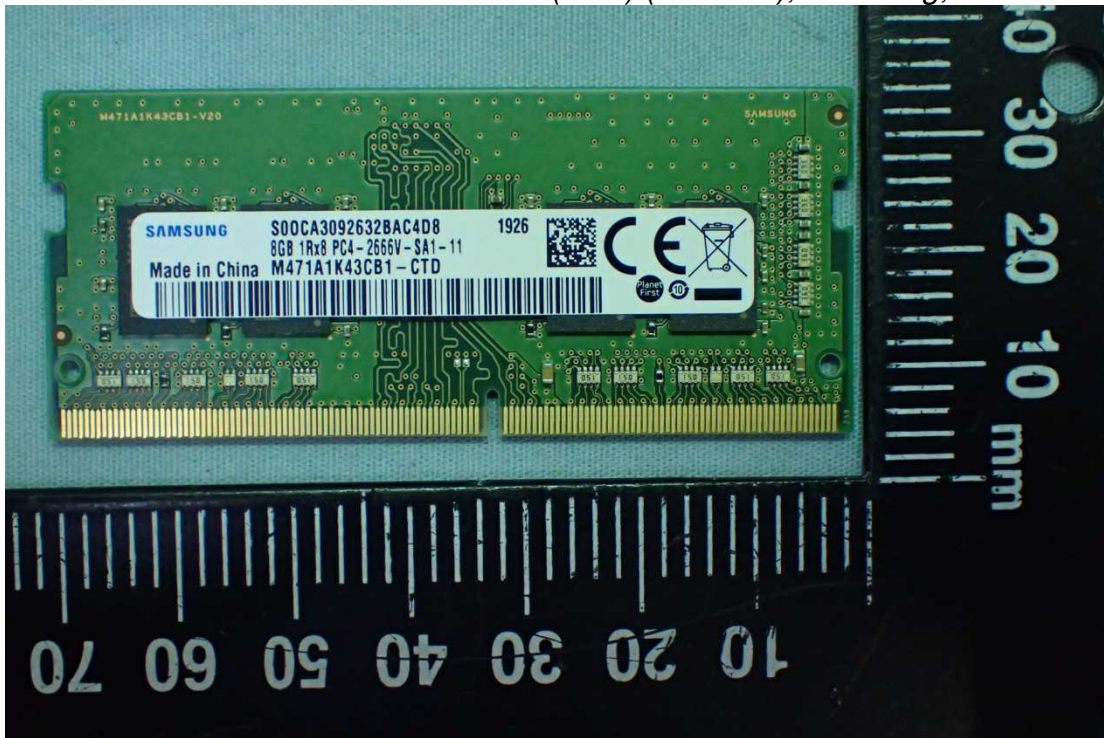


Figure 30  
RAM (8GB) (On Card), Samsung, Back View

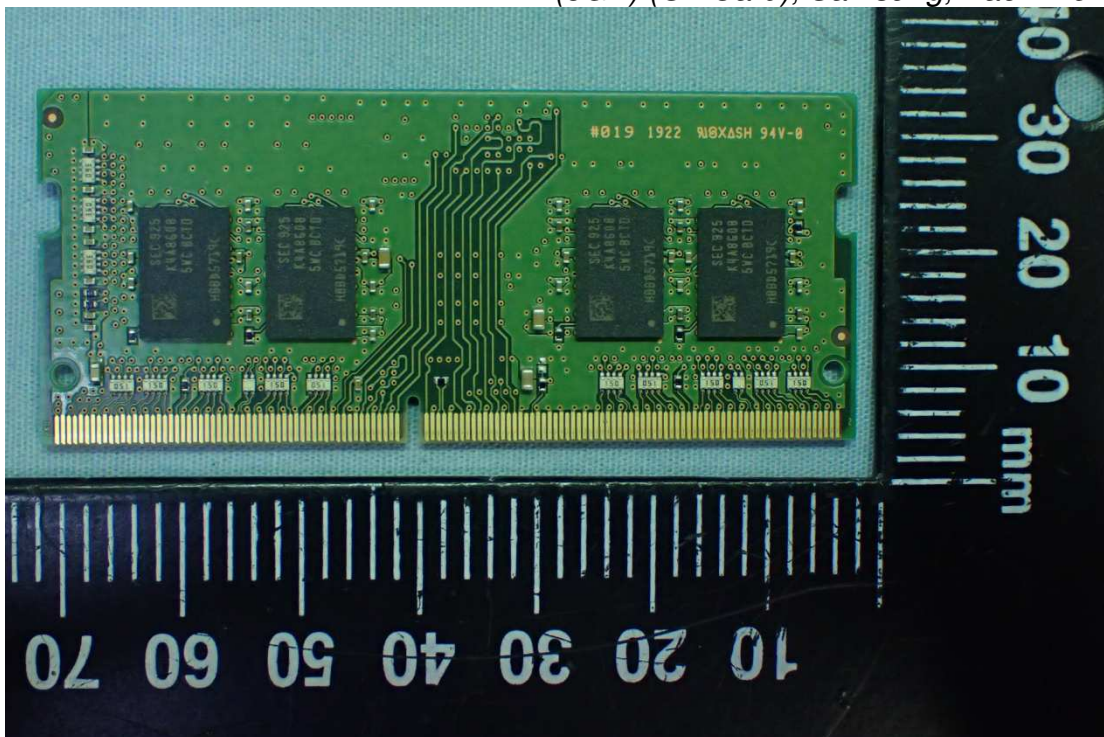


Figure 31  
Touch Pad, Front View

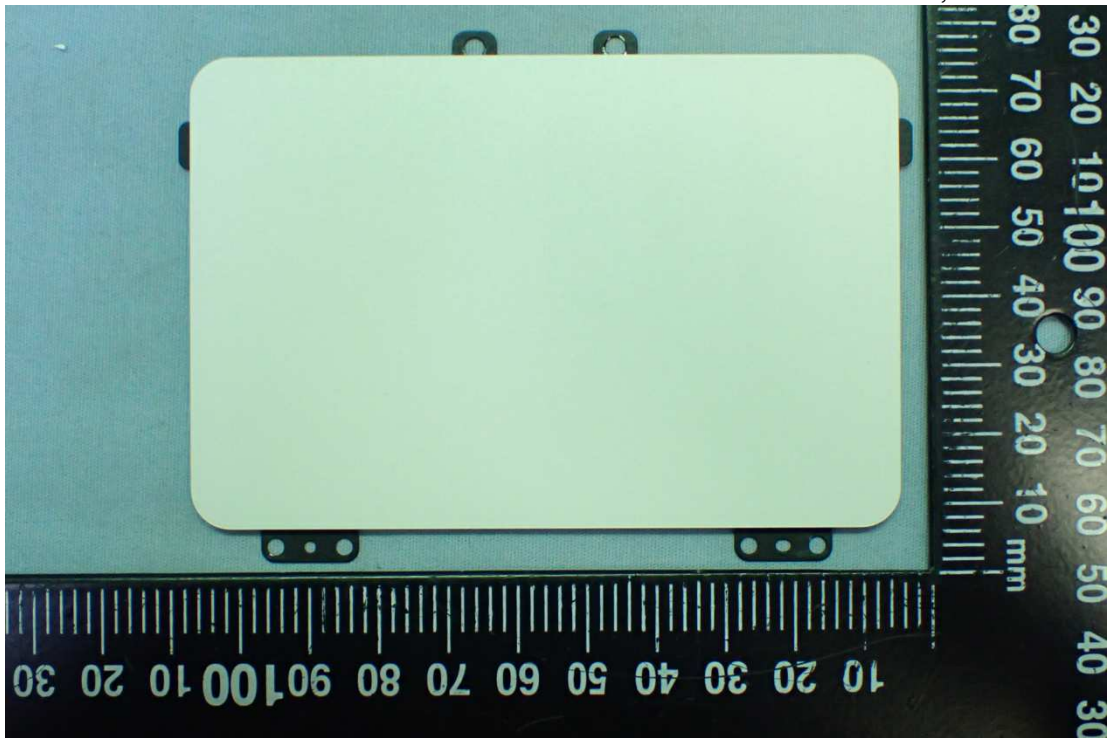


Figure 32  
Touch Pad, Back View

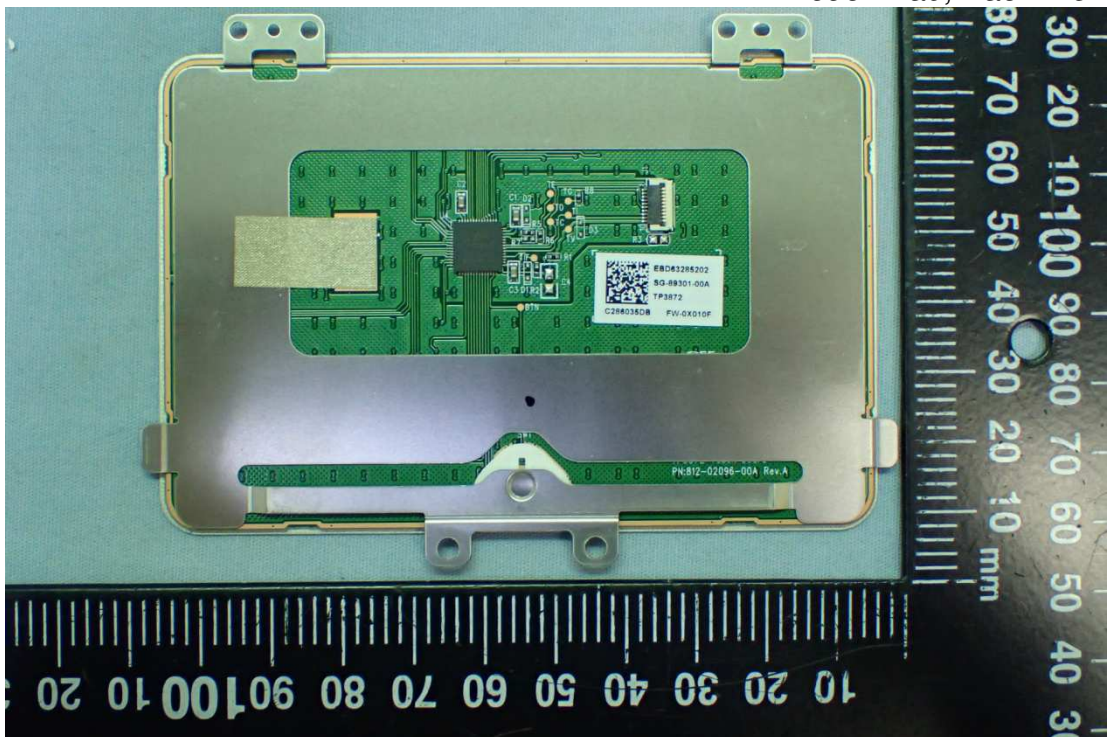


Figure 33  
Finger Print, Front View

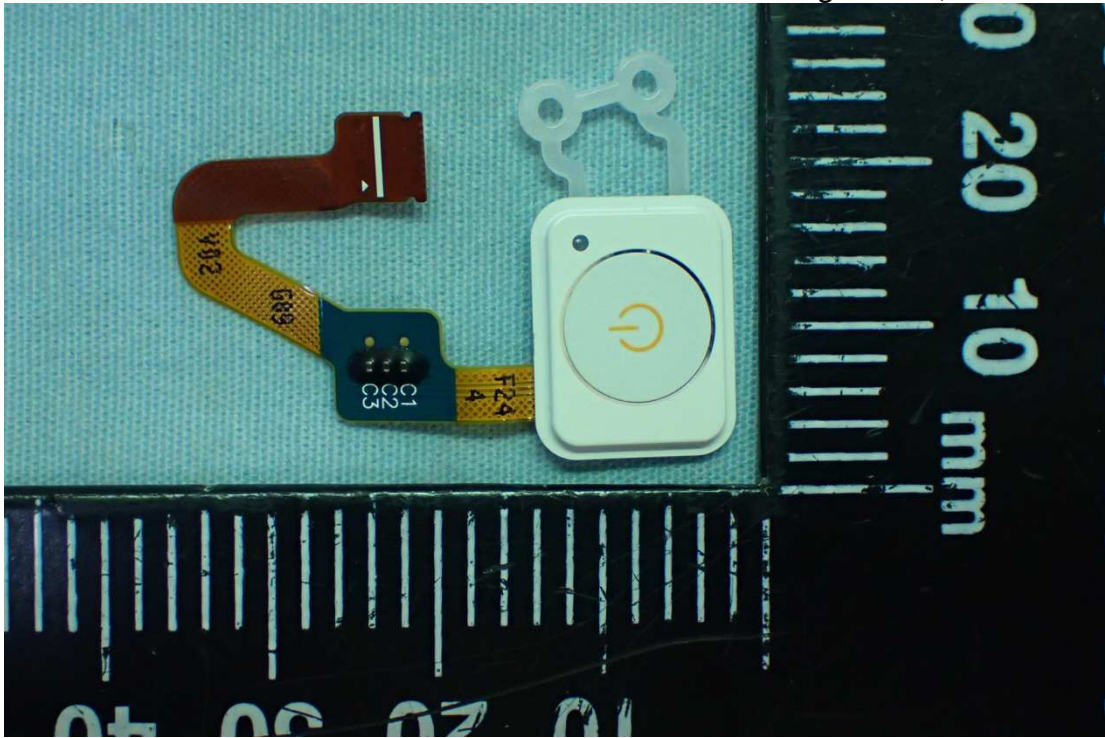


Figure 34  
Finger Print, Back View

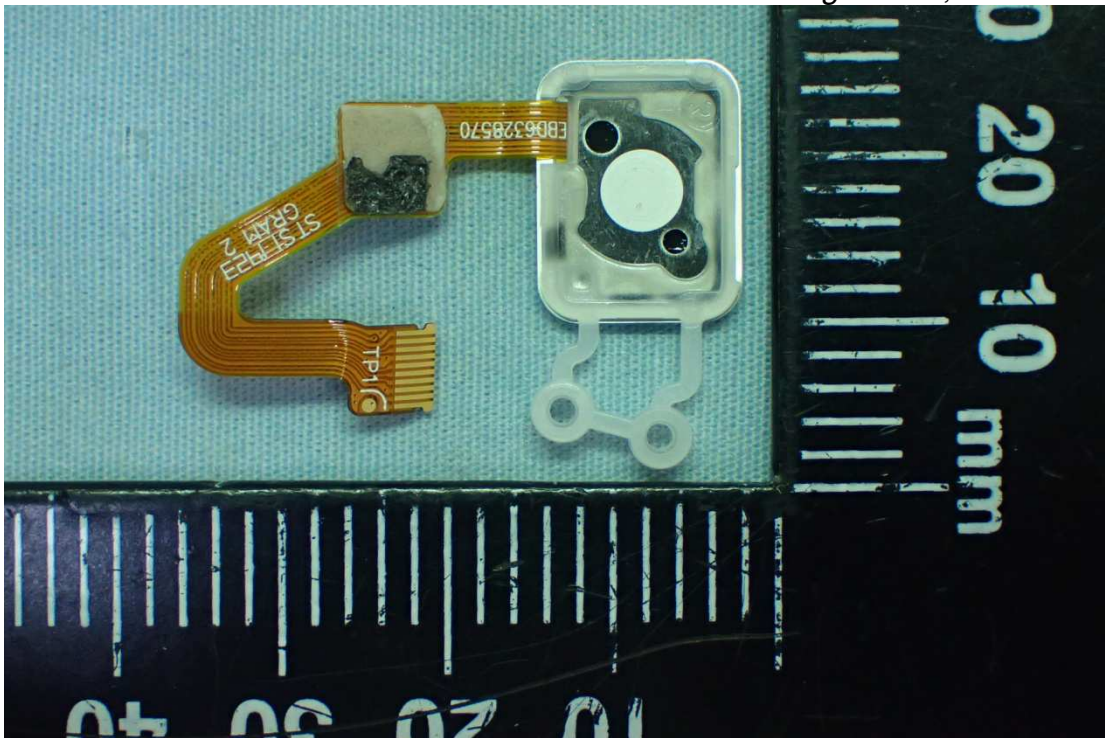


Figure 35  
MEC (1000 Megabit Ethernet), LAN Gender (White)

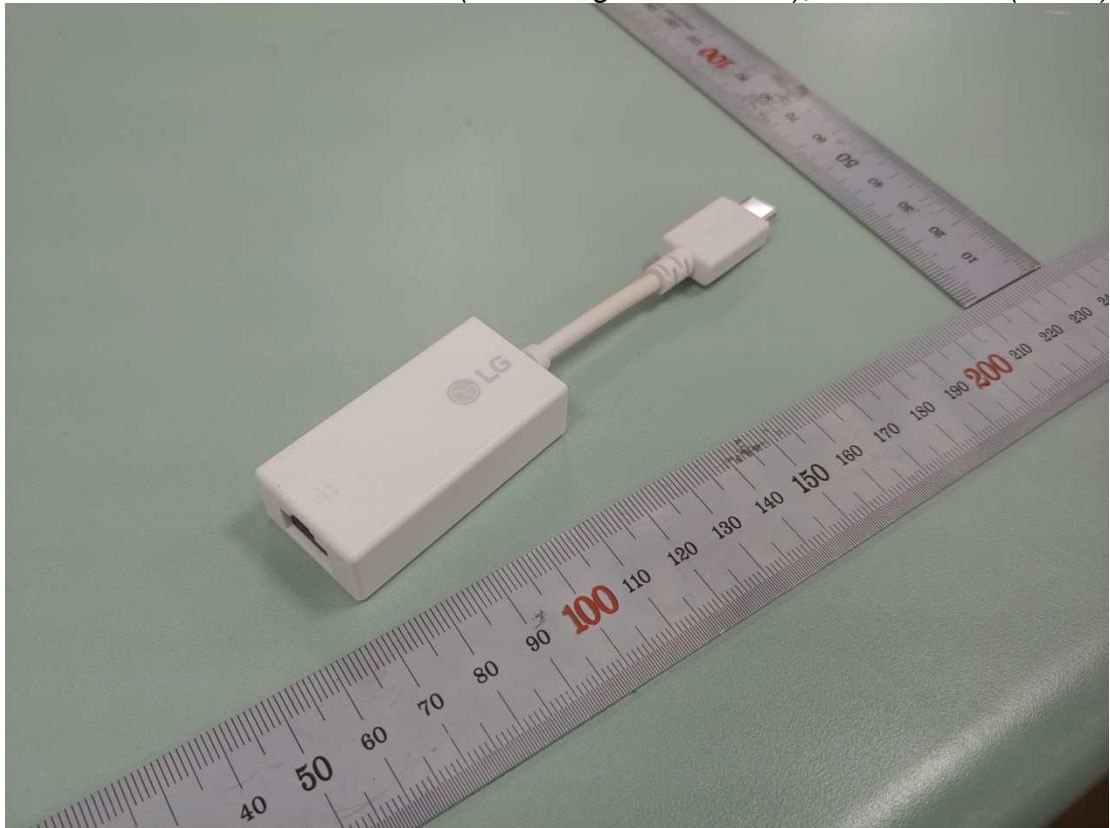


Figure 36  
MEC (1000 Megabit Ethernet), LAN Gender (White), IO View

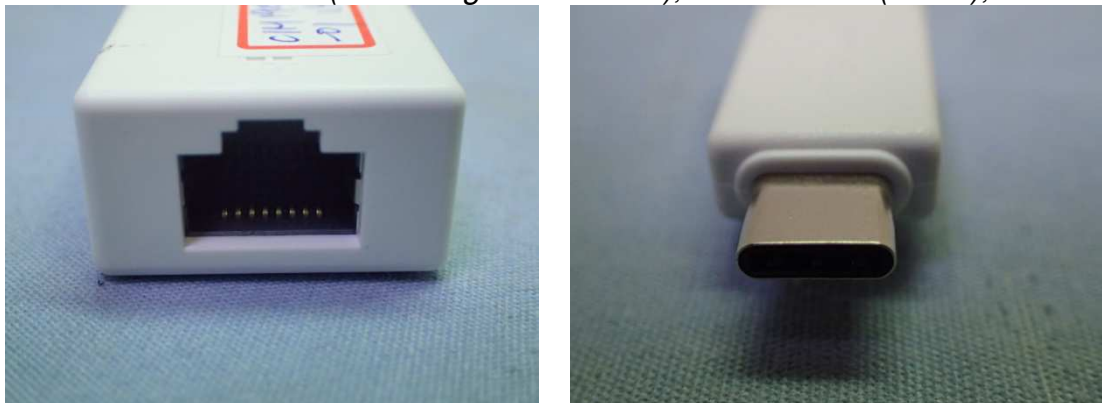


Figure 37  
MEC (100 Megabit Ethernet), LAN Gender (White)

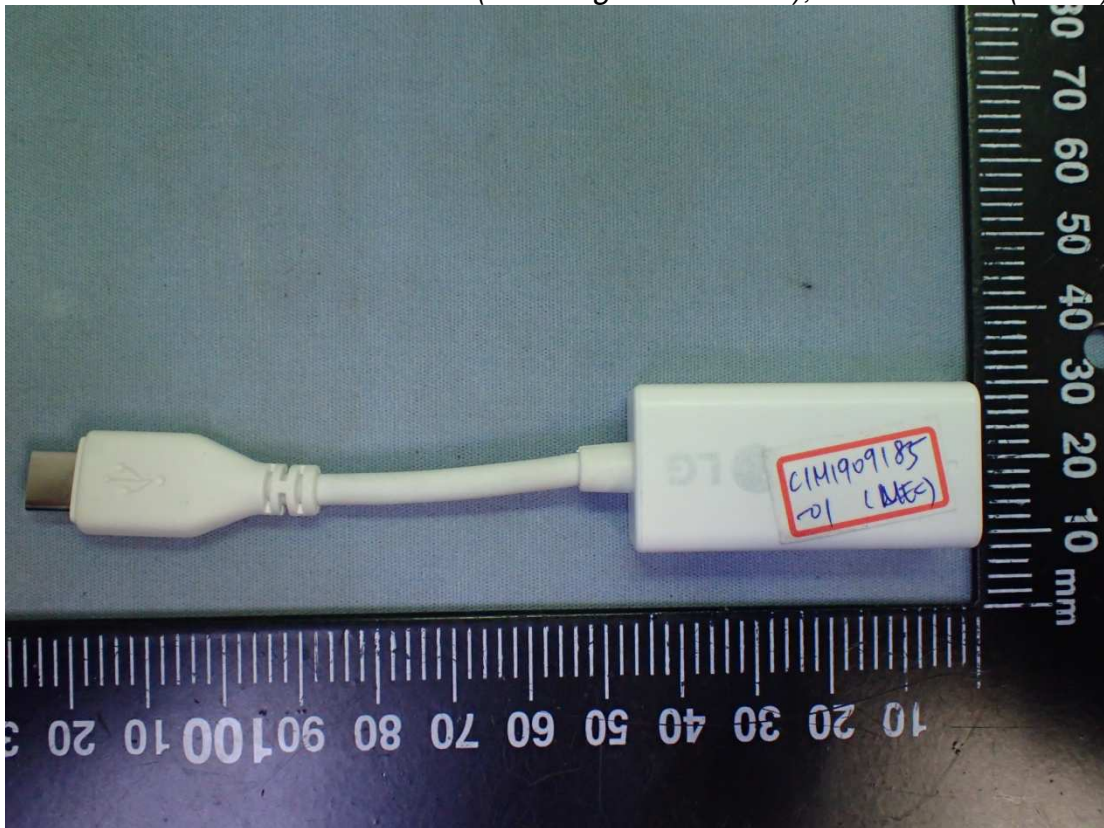


Figure 38  
MEC (100 Megabit Ethernet), LAN Gender (White), IO View

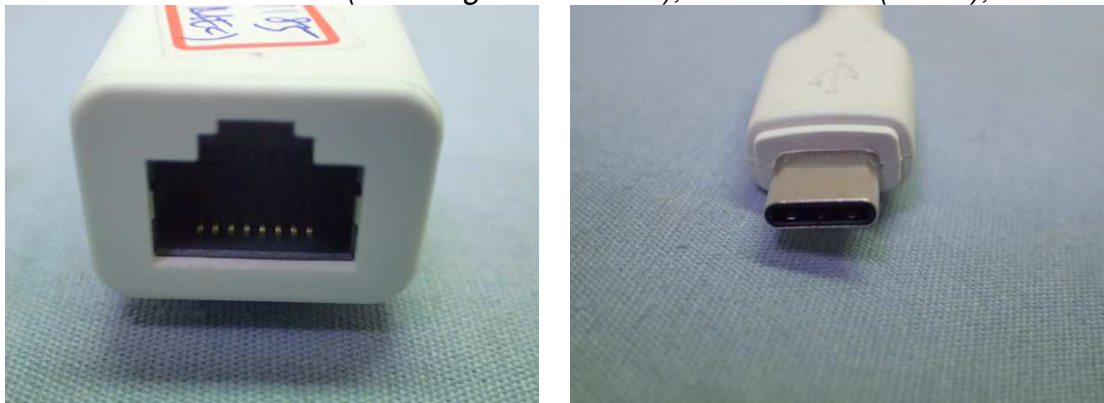


Figure 39  
ARIN (100 Megabit Ethernet), LAN Gender (White)

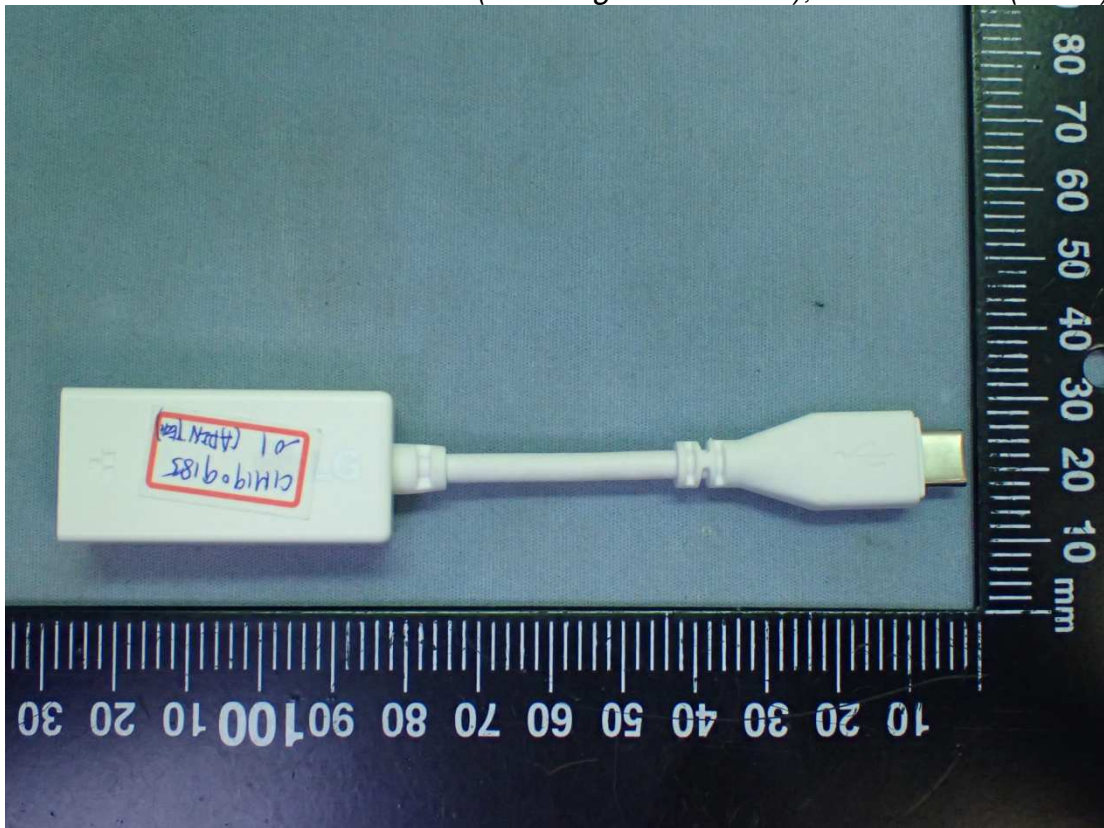


Figure 40  
ARIN (100 Megabit Ethernet), LAN Gender (White), IO View

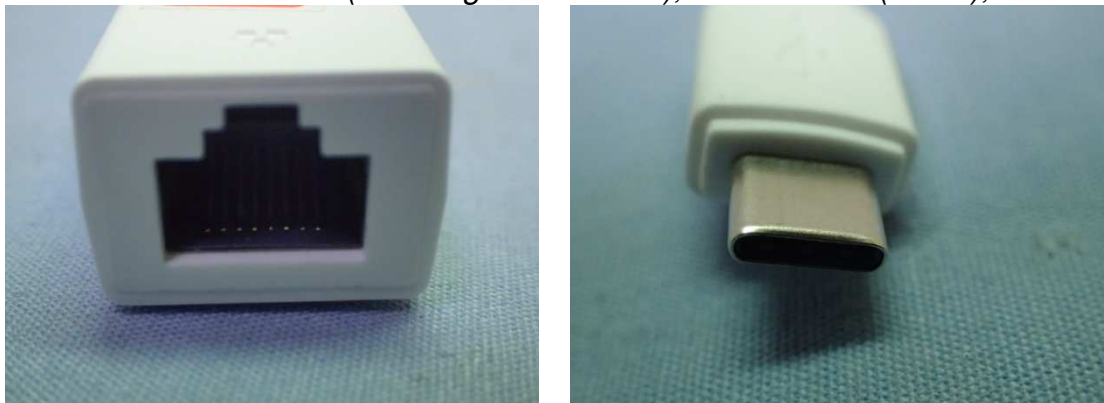


Figure 41  
MEC (1000 Megabit Ethernet), LAN Gender (Black)

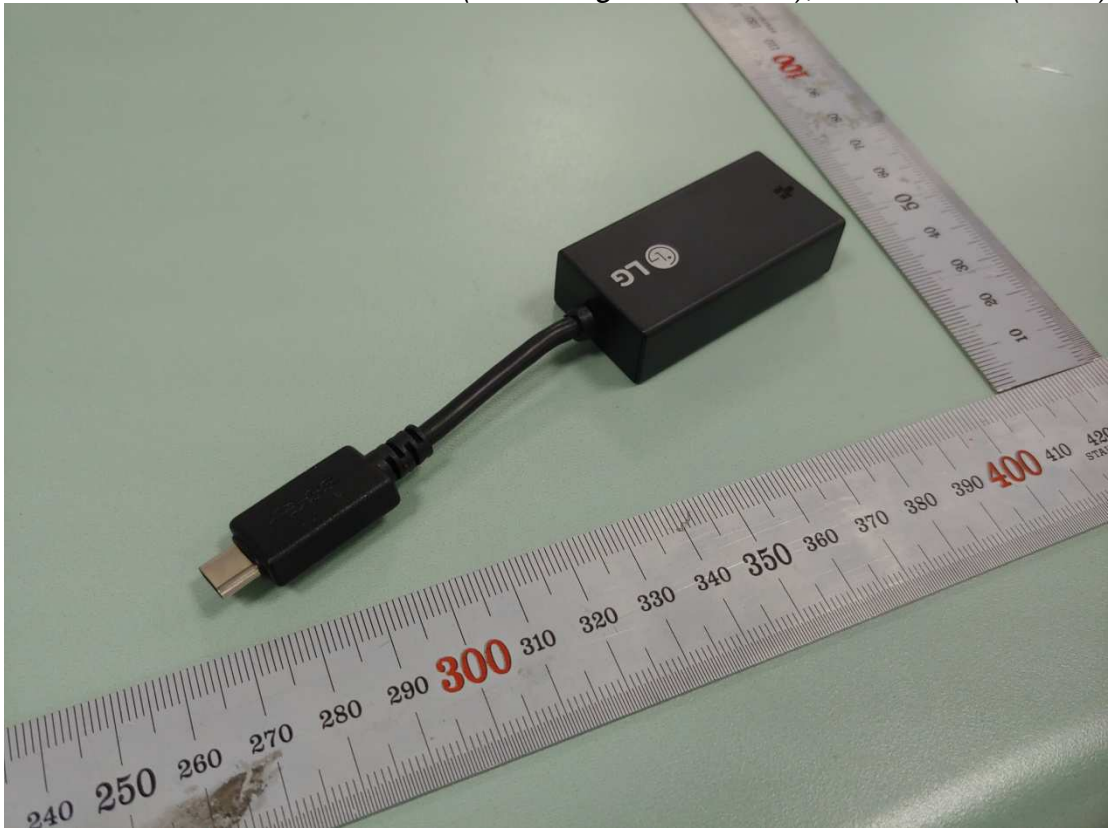


Figure 42  
MEC & ARIN (100 Megabit Ethernet), LAN Gender (Black), Front View



Figure 43  
MEC & ARIN (100 Megabit Ethernet), LAN Gender (Black), Back View

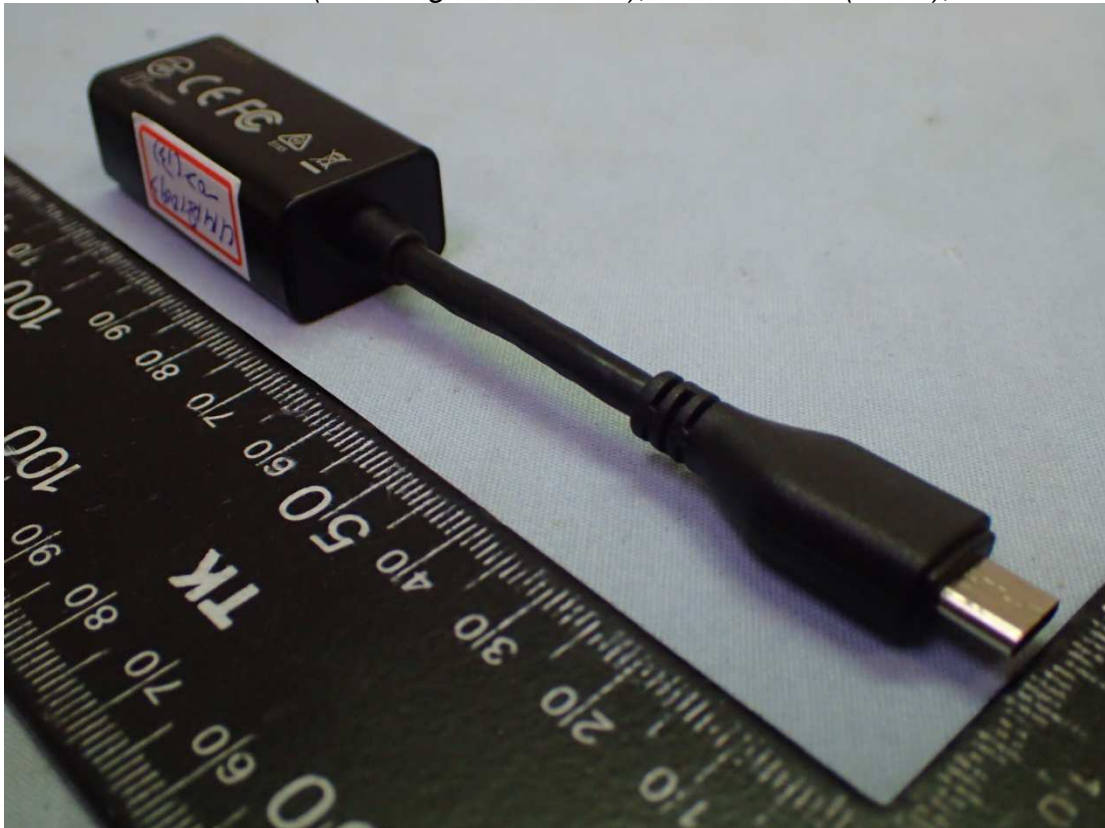


Figure 44  
AC Adapter (White), Front View



Figure 45  
AC Adapter (White), Back View



Figure 46  
AC Adapter (White), AC Inlet View



Figure 47  
AC Adapter (White), Label View



Figure 48  
AC Adapter (Black), Front View





Figure 51  
AC Adapter (Black), Label View



Figure 52  
AC Power Cord (1.55m)

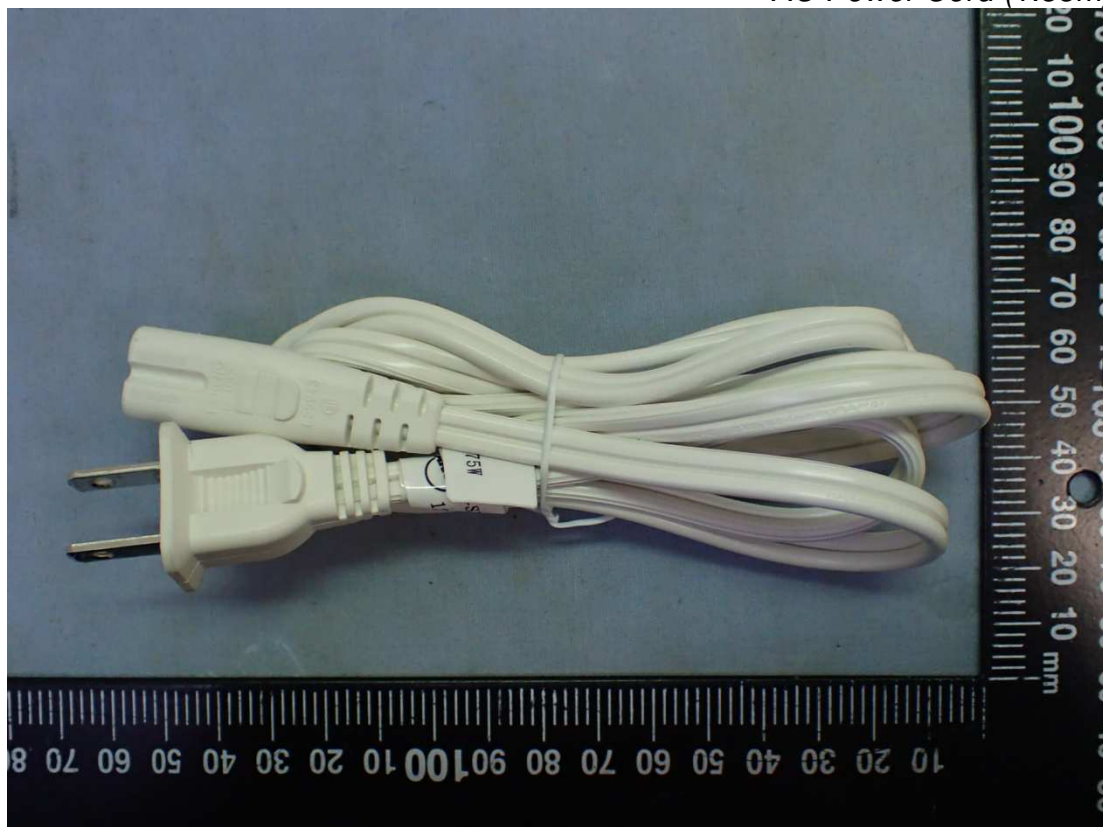


Figure 53  
AC Power Cord (1.55m)

