

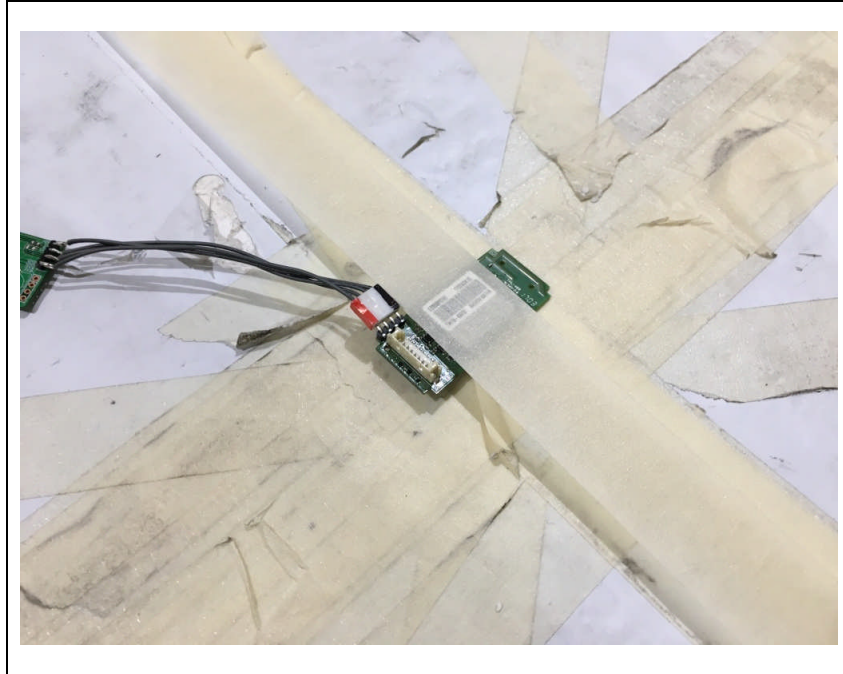
SGS

***Test setup photos of EUT***

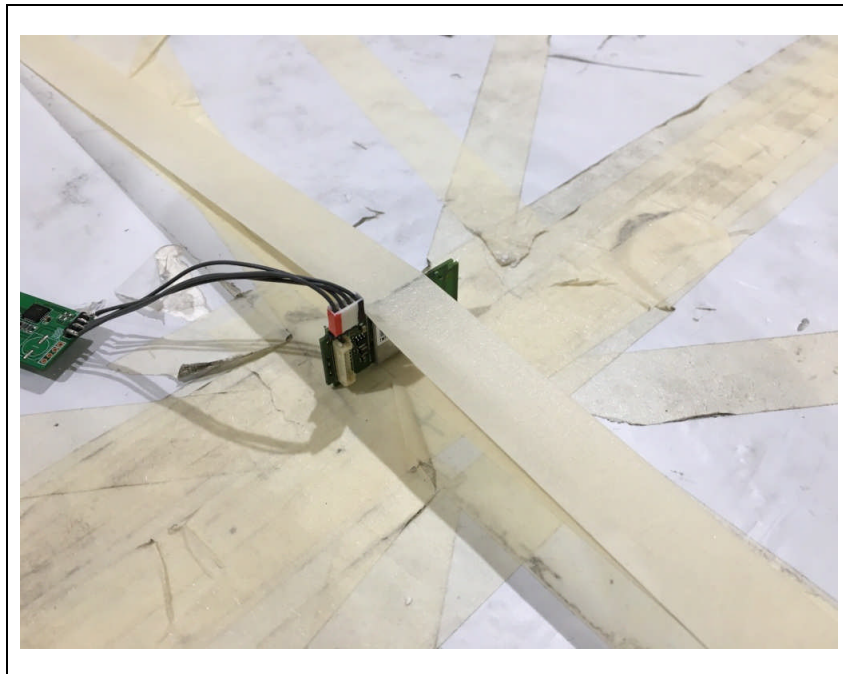
## 1. Orthogonal planes of EUT

- The testing was set in the three orthogonal planes and measured for each position (X, Y, Z).

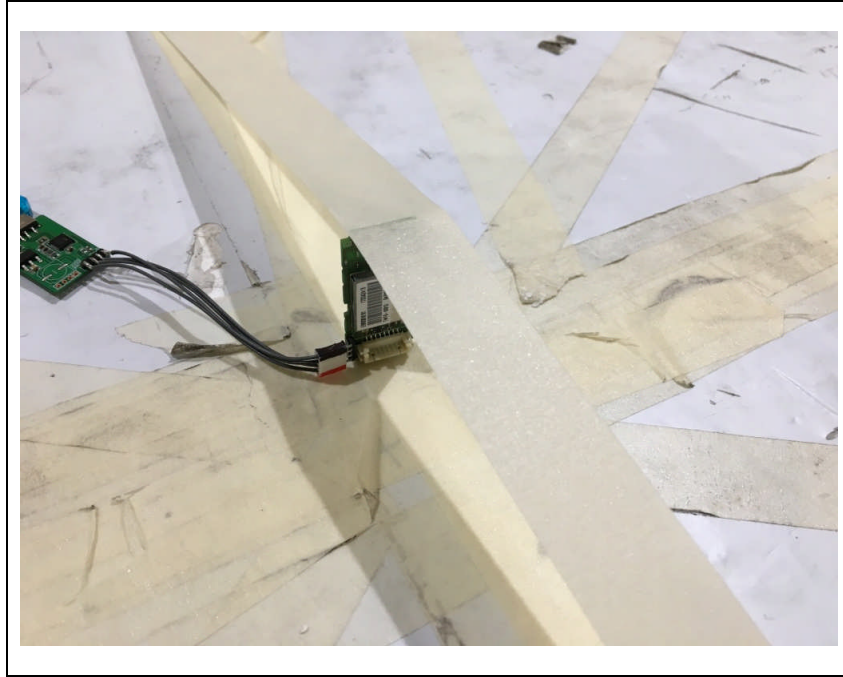
### A. X-axis



### B. Y-axis

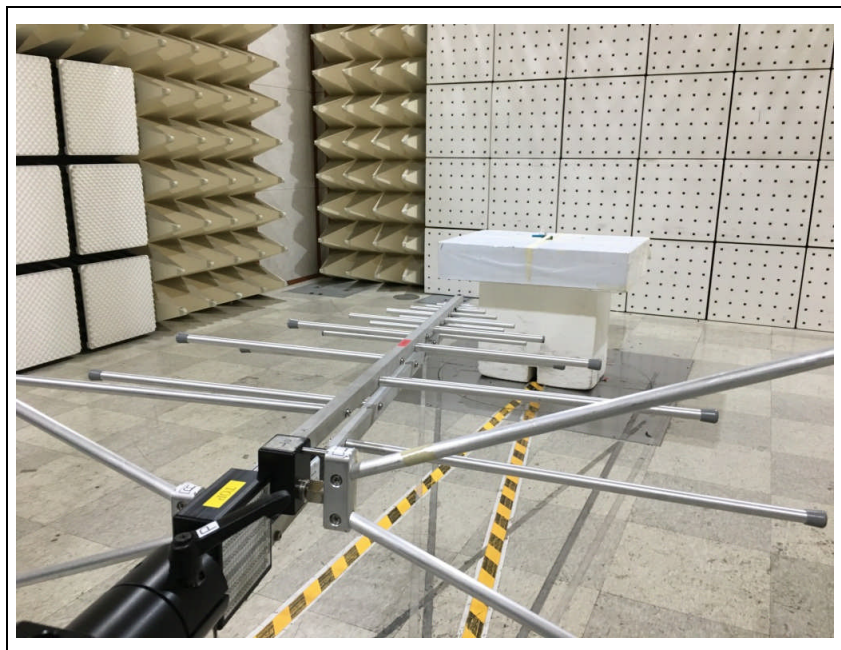


## C. Z-axis



## 2. Worst case of orthogonal planes each frequency band

- Test setup photos for each mode were reported as representative worst axis after radiated measurements for each position were complete.
- To get a maximum emission level from the EUT, the EUT is manipulated through three orthogonal planes (X, Y, Z). Worst orthogonal plan of EUT is Y – axis during radiation test.
- **Photo of Radiated Spurious Emission Test (Below 1 GHz)**



- Photo of Radiated Spurious Emission Test (Above 1 GHz)

