

S P E C I F I C A T I O N

LG Innotek Co., Ltd.

A P P D.	C H K D.	D S G D.	MODEL NO	T A D M - H 1 0 2 F
2002.10.26 G.S Park		2002.10.26 H.S Cheong	DOCUMENT NO	B C 4 0 3 8 9

S P E C I F I C A T I O N

I n d e x

Item no	Item	Page
1	Common	3p
1- 1	Application	3p
1- 2	Structure	3p
1- 3	Circuit	3p
2	General specifications	3p
2- 1	Applicable broadcasting system	3p
2- 2	Receiving system	3p
2- 3	Intermediate frequency	3p
2- 4	Receiving channel	3p
2- 5	Output channel of modulator	3p - 4p
2- 6	Input / output condition	4p
2- 7	Operating temperature range	4p
2- 8	Storage temperature range	4p
2- 9	Guarantee voltage for operation	4p
2-10	Maximum ratings	5p
2-11	Current consumption	5p
2-12	PLL data format	5p - 7p
2-13	Test condition	7p
2-14	Measuring instruments	8p

					A P P D.	C H K D.	D S G D.	MODEL NO: TADM-H102F
					/	/	/	TITLE:
								SPECIFICATION
								DOCUMENT NO:
SYMB	NO	APPD	CHKD	DSGD				BC 40389 (1/23)

3	Electrical characteristics	9p
3- 1	RF-modulator section	9p - 12p
3- 2	ANT SW section	13p - 14p
3- 3	Tuner section	15p - 17p
3- 4	IF section	17p - 19p
4	Environmental tests	20p
4 -1	Heat load test	20p
4- 2	Humidity load test	20p
4- 3	Cold test	20p
4- 4	Operating life test	20p
4- 5	High voltage test	20p
4- 6	Vibration test	20p
4- 7	Impact test	20p
5	Mechanical characteristics	21p
5- 1	Outline view assembly appearance	21p
5- 2	Appearance structure	22p
6	Others	22p
6- 1	Ant jack load test	22p
7	Test circuit	23p
8	Frequency table	24p - 26p

					A P P D.	C H K D.	D S G D.	MODEL NO: TADM-H102F
								TITLE:
								SPECIFICATION
								DOCUMENT NO:
SYMB	NO	APPD	CHKD	DSGD				BC 40389 (2/23)

1. Common

1- 1. Application

This specification applies to TMI type (RF Front-End system) for TV, VTR

1- 2. Structure

Refer to the attached assembly drawing.

1- 3. Circuit

Refer to the attached circuit diagram.

2. General specifications.

2- 1. Applicable broadcasting system

M NTSC / US CH

2- 2. Receiving system

Upper Heterodyne

2- 3. Intermediate frequency

Picture intermediate frequency : 45.75 MHz
 Sound intermediate frequency : 41.25 MHz

2- 4. Receiving channel

VHF LOW : 2 ~ B Ch
 VHF HIGH : C ~ W+11 Ch
 UHF : W+12 ~ 69 Ch

2- 5. Output channel of modulator

US 3 / 4 Ch

					A P P D.	C H K D.	D S G D.	MODEL NO: TADM-H102F
								TITLE: SPECIFICATION
								DOCUMENT NO: BC 40389 (3/23)
SYMB	NO	APPD	CHKD	DSGD				

	Terminal NO. 2
3 Ch	OPEN
4 Ch	GND

2- 6. Input / Output condition

ANT nominal impedance

ANT IN : 75Ω unbalance

ANT OUT : 75Ω unbalance

Video in impedance : 0.7kΩ ~ 1.3kΩ (typ. 1kΩ)

Audio in impedance : 10kΩ min.

Control impedance : 30kΩ min. (typ. 100kΩ)

Video out load : 10kΩ

Audio out load : 100kΩ

2- 7. Operating temperature range

Temperature: -10℃ ~ +60℃

(Normally Air Temperature)

Humidity : less than 65%RH

2- 8. Storage temperature range

Temperature : -10℃ ~ +70℃

(Normally Air Temperature)

Humidity : less than 70%RH

2-9. Guarantee voltage for operation

Terminal	Supply voltage			
	min.	typ.	max.	unit
+B	4.8	5.0	5.2	Vdc
MB	--	--	--	
TU	29.0	32.0	34.0	
CONTROL(MD:ON)	4.8	5.0	5.2	

					APPD.	CHKD.	DSGD.	MODEL NO: TADM-H102F
								TITLE: SPECIFICATION
								DOCUMENT NO: BC 40389 (4/23)
SYMB	NO	APPD	CHKD	DSGD				

2-10. Maximum ratings

Terminal	Supply voltage	Unit
+B	6.0	Vdc
MB	--	
TU	35.0	
CONTROL(MD:ON)	6.0	

(note) Within "PB" supply voltage at SCL,SDA,terminal.

2-11. Current consumption

Terminal	Current consumption			
	min.	typ.	max.	unit
+B	-	170	200	mA
MB	-	--	--	
TU	-	1.5	5.0	
CONTROL(MD:ON)	-	47.0	173	μ A

2-12. PLL characteristics of tuner section

2-12-1. I2C data format

	MSB							LSB	
Address byte	1	1	0	0	0	MA1	MA0	0	A
Divider byte 1	0	N14	N13	N12	N11	N10	N9	N8	A
Divider byte 2	N7	N6	N5	N4	N3	N2	N1	N0	A
Control byte	1	CP	0	0	0	R1	R0	0	A
B AND SW byte	0	0	0	0	BS3	BS2	BS1	BS0	A

					A P P D.	C H K D.	D S G D.	MODEL NO: TADM-H102F	
								TITLE: SPECIFICATION	
								DOCUMENT NO: BC 40389 (5/23)	
SYMB	NO	APPD	CHKD	DSGD					

Where:

- A : Acknowledge bit
- Address Selection

"ADSW" Terminal voltage	MA1	MA0
$0 \sim 0.1 \times PB$	0	0
OPEN	0	1
$0.4 \times PB \sim 0.6 \times PB$	1	0
$0.9 \times PB \sim PB$	1	1

- CP : Charge pump current (CP = 0 = $50\mu A$, CP = 1 = $200\mu A$)
 - N14~ N0 : Programmable divider byte

$$N = N14 \times 2^{14} + N13 \times 2^{13} + \dots + N1 \times 2^1 + N0$$
 - Band switching byte

	BS3	BS2	BS1	BS0
UHF	1	0	0	0
VHF HIGH	0	0	1	0
VHF LOW	0	0	0	1

2-12-2. Oscillator frequency calculation

$$F_{osc} = F_{ref} \times 8 \times N$$

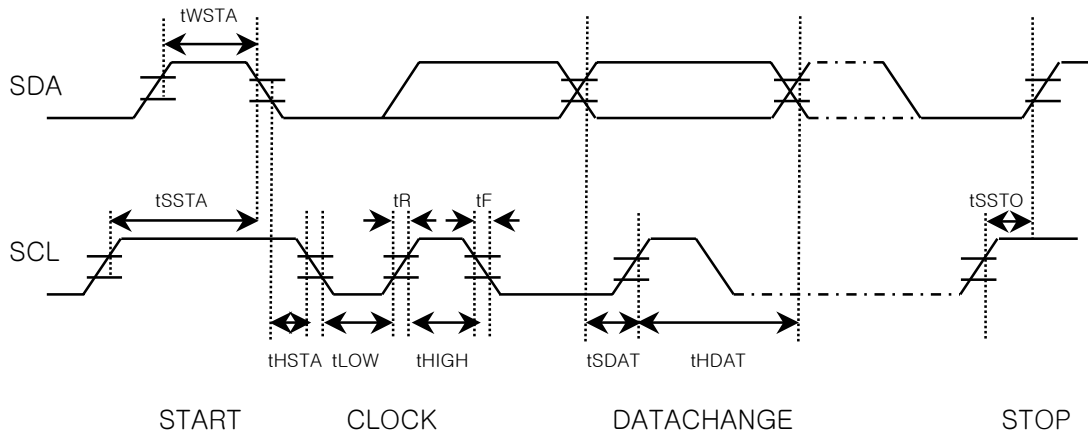
- Fosc : Locked oscillator frequency
- Fref : $4MHz/512 = 7.8125kHz$
- N : Oscillator frequency data

2-12-3. Input Signal Level (SCL, SDA)

INPUT Signal level	MIN	MAX	Unit
High level	3.0	5.5	V
Low level	-	1.5	

					A P P D.	C H K D.	D S G D.	MODEL NO: TADM-H102F
					/	/	/	TITLE: SPECIFICATION
								DOCUMENT NO: BC 40389 (6/23)
SYMB	NO	APPD	CHKD	DSGD				

2-12-4 I²C BUS Time



		MIN	TYP	MAX	단 위
fSCL	SCL clock frequency	0		400	kHz
tWSTA	Start waiting time	1300			nsec
tHSTA	Start hold time	600			"
tLOW	Low clock pulse width	1300			"
tHIGH	High clock pulse width	600			"
tSSTA	Start set-up time	600			"
tHDAT	Data hold time	1300			"
tSDAT	Data set-up time	600			"
tR	Rise time			300	"
tF	Fall time			300	"
tSSTO	Stop set-up time	600			"

2-13. Test condition

Terminal	Supply voltage	Unit	Remarks
+B	5 ± 0.1	Vdc	Ripple: 10mVp-p max.
MB	5 ± 0.1	Vdc	
TU	32 ± 2	Vdc	
CONTROL	5 ± 0.1	Vdc	
Ambient temperature	25 ± 5	°C	
Relative humidity	65 ± 10	%RH	

SYMB	NO	APPD	CHKD	DSGD	A P P D.	C H K D.	D S G D.	MODEL NO: TADM-H102F
								TITLE: SPECIFICATION
								DOCUMENT NO: BC 40389 (7/23)

2-14. Measuring instruments

2-14-1. RF-modulator section

Audio analyzer	: 8903B	HP
Television demodulator	: 5126A	NIHON TSUSHINKI
Spectrum analyzer	: 8568B	HP
Network analyzer	: 8753C	HP
TV pattern generator	: TSG120	TEKTRONIX
	3900N	NIHON TSUSHINKI
Video Measurement	: VM700A	TEKTRONIX

2-14-2. IF section

TV pattern generator	: TG-7/1	SHIBASOKU
	TG2000	TEKTRONIX
IF modulator	: RM54A	SHIBASOKU
	146F	EIDEN
RF converter	: RC51B	SHIBASOKU
	458C-X	EIDEN
Video Measurement	: VM700A	TEKTRONIX
Audio Analyzer	: 8903B	HP

					A P P D.	C H K D.	D S G D.	MODEL NO: TADM-H102F
								TITLE:
								SPECIFICATION
								DOCUMENT NO:
SYMB	NO	APPD	CHKD	DSGD				BC 40389 (8/23)

3. Electrical characteristics

The unit stated in $\text{dB}\mu\text{V}$ is defined the value at 75Ω terminal in this specification. ($0 \text{ dBm} = 109 \text{ dB}\mu\text{V}$)

3- 1. RF-modulator section

Item	Specification				Note
	min.	typ.	max.	unit	
3-1- 1. Video modulation	74	80	86	%	Input signal : 1.0Vp-p white Measure at the output of the standard demodulator.
3-1- 2. Video limit modulation	87	93	99	%	Input signal : 1.5Vp-p stair-steps or ramp. Measure at the output of the standard demodulator.
3-1- 3. V/S ratio	10:3.8	10:4.0	10:4.1	-	Input signal :1.0Vp-p white V : S = 10 : 4 Measure at the output of the standard demodulator.
3-1- 4. Video amplitude frequency characteristics	-3.0	-0.5	+3.0	dB	Measure range : 0.1MHz ~ 4.2MHz Based on 1MHz
3-1- 5. Differential Gain (DG)	-	2	7	%	Input signal : 1.0Vp-p stair-steps Chrominance : 20 IRE Luminance : 0 ~ 90 %
3-1- 6. Differential Phase (DP)	-	2	7	deg	Input signal : 1.0Vp-p stair-steps Chrominance : 20 IRE Luminance : 0 ~ 90 %
3-1- 7. Video S/N	45	47	-	dB	Compensation of spectral luminance efficacy. RF output should be amped 12dB. (LGEC control method) Measurement conditions. Measure at the out of the Standard demodulator. (5126A - NIHON TSUSHINKI)

					A P P D.	C H K D.	D S G D.	MODEL NO: TADM-H102F
					/			TITLE: SPECIFICATION
								DOCUMENT NO: BC 40389 (9/23)
SYMB	NO	APPD	CHKD	DSGD				

Item	Specification				Note
	min.	typ.	max.	unit	
					Video Measurement : VM700A (TEKTRONIX) HPF : 100kHz, LPF : 4.2MHz SC TRAP : ON, WEIGHT : OFF Input signals : Video : 100% white signal Audio : none Video band : 0.1MHz ~ 4.2MHz
3-1- 8. Chroma beat (920kHz P.C.S. beat)	55	65	-	dB	Input signal : 0.4Vp-p 3.58MHz sine wave Use spectrum analyzer to measure the level of Fp + 0.92MHz The value is relative to the level of Fp without video modulation.
3-1- 9. Audio modulation (deviation)	32 (64)	40 (80)	48 (96)	kHz dev (%)	Input signal : -6.5dBs, (1.04Vp-p) 1kHz sine wave (100 % modulation = ± 25kHz dev.)
3-1-10. Audio maximum modulation	150 (300)	220 (440)	-	kHz dev (%)	Input signal : 1kHz sine wave The input should be adjusted to the level just before the saturation of the modulation.
3-1-11. Audio amplitude frequency characteristics	-3	+0.2 -0.6	+3	dB	Input signal : -6.5dBs, (1.04Vp-p) Measure range : 50Hz ~ 10kHz Based on 1kHz
3-1-12. Audio distortion	-	0.5	2.0	%	Input signals : Audio : -6.5dBs (1.04Vp-p), 1kHz sine wave Video : 1Vp-p color bar De-emphasis is on.(75 μ sec)
					A P P D. C H K D. D S G D. MODEL NO: TADM-H102F
					TITLE: SPECIFICATION
					DOCUMENT NO: BC 40389 (10/23)
SYMB	NO	APPD	CHKD	DSGD	

Item	Specification				Note
	min.	typ.	max.	unit	
3-1-13. Audio S/N	48	54	-	dB	Input signals : Audio : -6.5dBs (1.04Vp-p), 1kHz sine wave Video : All black (sync. only) Use standard demodulator of inter-carrier system. De-emphasis is on. (75μ sec)
3-1-14. Audio buzz	45	55	-	dB	Video input signal : 1Vp-p color bar Other conditions : same as item 3-1-13.
3-1-15. Video carrier output level	63	66.0	67	dBμV	Video input signal : 1Vp-p 100% white signal.
3-1-16. P/S ratio (sound carrier level)	-12.5	-14.5	-17	dB	Audio input signal : none Other conditions : same as item 3-1-15.
3-1-17. Video carrier frequency	-150	-	+150	kHz	Video input signal : none
3-1-18. Sound carrier frequency	4493	4500	4507	kHz	Audio input signal : none The measurements are taken after 1 min. from the power on.
3-1-19. Outband spurious	-	-	39.5	dBμV	Video input signal : 1Vp-p color bar Measure range : 0 ~ 1GHz Except the range from Fp-4.6MHz to Fp+7.4MHz.
3-1-20. Inband spurious	60	-	-	dB	Input signals : Video : none Audio : none Measure range : Fp~Fp+4.5MHz.
3-1-21. Terminal leakage	-	-	54	dBμV	Measure range : 0 ~ 1GHz except GND.

					A P P D.	C H K D.	D S G D.	MODEL NO: TADM-H102F
					/			TITLE: SPECIFICATION
								DOCUMENT NO: BC 40389 (11/23)
SYMB	NO	APPD	CHKD	DSGD				

3-1-22. Stability

- 3-1-22-1. Video carrier frequency rise up time.
The time to approach the set value $\pm 100\text{kHz}$: within 3 seconds
- 3-1-22-2. Audio carrier frequency rise up time.
The time to approach the set value $\pm 5\text{kHz}$: within 10 seconds
- 3-1-22-3. Video carrier frequency shift by supply voltage drift.
Within $\pm 10\text{kHz}$ by $\pm 0.3\text{V}$ shift of the supply voltage.
- 3-1-22-4. Audio carrier frequency shift by supply voltage drift.
Within $\pm 3\text{kHz}$ by $\pm 0.3\text{V}$ shift of the supply voltage.

3-1-23. Thermal Stability

- 3-1-23-1. Thermal stability of video modulation.
Within $\pm 4\%$ based on the temperature of 25°C .

※ Unless otherwise specified, thermal stability tests shell be performed under the following conditions.

Measurement temperature range : $-10^\circ\text{C} \sim 60^\circ\text{C}$

Humidity range : 45%RH ~85%RH

Test measurement order and time :
 $25^\circ\text{C} \rightarrow -10^\circ\text{C} (2\text{H}) \rightarrow 10^\circ\text{C} (1\text{H}) \rightarrow 25^\circ\text{C} (1\text{H}) \rightarrow 45^\circ\text{C} (1\text{H}) \rightarrow 60^\circ\text{C} (2\text{H})$

- 3-1-23-2. Thermal stability of video modulation.
Within $\pm 150\text{kHz}$ based on the temperature of 25°C .
- 3-1-23-3. Thermal stability of audio modulation.
Within $\pm 20\%$ based on the temperature of 25°C .
- 3-1-23-4. Thermal stability of video modulation.
Within $\pm 10\%$ on the temperature of 25°C .
- 3-1-23-5. Thermal stability of P/S ratio
Within $\pm 3.0 \text{ dB}$ based on the temperature of 25°C , but the P/S ratio itself should not be less than 13 dB.

					A P P D.	C H K D.	D S G D.	MODEL NO: TADM-H102F
								TITLE: SPECIFICATION
								DOCUMENT NO: BC 40389 (12/23)
SYMB	NO	APPD	CHKD	DSGD				

3- 2. ANT SW section

Unless otherwise specified, measurement range shall be 54MHz ~ 810MHz,
and unused RF terminals shall be terminated by rated impedance
Terminator.

Item	Specification				Note									
	min.	typ.	max.	unit										
3-2-1. Insertion loss	-	5	6	dB	ANT IN to ANT OUT mode : TV (at MD OFF)									
3-2-2. VSWR I	-	5.5	7		ANT IN Terminal mode : TV (at MD OFF) 54MHz ~ 810MHz									
3-2-3. VSWR II	-	2	4		ANT OUT terminal mode : TV (at MD OFF) 54MHz ~ 810MHz									
	-	2	3		mode : VTR (at MD ON) 61MHz ~ 72MHz									
3-2-4. Isolation	60	65	-	dB	Isolation from ANT OUT to ANT IN mode : VTR (at MD ON) 61MHz ~ 72MHz									
3-2-5. ANT IN leakage - MD - TU OSC	-	-	9.5	dB μ V	mode : VTR (at MD ON) RF-modulator section : none input signal									
	-	-	52	dB μ V	Tuner OSC leakage.									
3-2-6. 2nd Harmonics inter modulation	55	64	-	dB	f1/(f1+f2) ratio mode : TV (at MD OFF)									
					<table border="1"> <thead> <tr> <th>item</th> <th>freq(MHz)</th> <th>level(dB)μV</th> </tr> </thead> <tbody> <tr> <td>f1</td> <td>91.25</td> <td>100</td> </tr> <tr> <td>f2</td> <td>103.25</td> <td>100</td> </tr> </tbody> </table>	item	freq(MHz)	level(dB) μ V	f1	91.25	100	f2	103.25	100
					item	freq(MHz)	level(dB) μ V							
					f1	91.25	100							
f2	103.25	100												
Both f1 and f2 are not modulated.														

					A P P D.	C H K D.	D S G D.	MODEL NO: TADM-H102F
								TITLE: SPECIFICATION
								DOCUMENT NO: BC 40389 (13/23)
SYMB	NO	APPD	CHKD	DSGD				

Item	Specification				Note									
	min.	typ.	max.	unit										
3-2-7. Cross modulation	55	62	-	dB	<p>Then take the smallest ratio from the sideband to f2 as cross modulation value.</p> <table border="1"> <thead> <tr> <th>item</th> <th>freq(MHz)</th> <th>level(dB)μV</th> </tr> </thead> <tbody> <tr> <td>f1</td> <td>91.25</td> <td>105</td> </tr> <tr> <td>f2</td> <td>193.25</td> <td>80</td> </tr> </tbody> </table> <p>f1 is 40% AM modulated by 15.75KHz sine wave. f2 is not modulated.</p>	item	freq(MHz)	level(dB) μ V	f1	91.25	105	f2	193.25	80
item	freq(MHz)	level(dB) μ V												
f1	91.25	105												
f2	193.25	80												

					A P P D.	C H K D.	D S G D.	MODEL NO: TADM-H102F
					/			TITLE: SPECIFICATION
								DOCUMENT NO: BC 40389 (14/23)
SYMB	NO	APPD	CHKD	DSGD				

3- 3. Tuner section

When the test characteristics, test point is pin no.16/if output terminal.

Item					Specification				Note	
					min.	typ.	max.	unit		
3-3-1. IF Rejection										
				UHF	60	80	-	dB	ANT INPUT level 65dB μ V	75 Ω terminated
	VHF			HIGH	60	80	-			
				LOW	45	60	-			
				UHF	40	60	-	dB	ANT INPUT level 95dB μ V	
	VHF			HIGH	40	65	-			
				LOW	40	60	-			
3-3-2. Image Rejection										
				UHF	45	60	-	dB	ANT INPUT level 65dB μ V	75 Ω terminated
				CATV	45	70	-			
	VHF			13 ~ 7	60	75	-			
				6 ~ 2	60	75	-			
				UHF	40	55	-	dB	ANT INPUT level 95dB μ V	
				CATV	40	60	-			
	VHF			13 ~ 7	40	60	-			
				6 ~ 2	40	60	-			
3-3-3. 920kHz Color Beat Rejection										
				UHF	50	80	-	dB	ANT INPUT level p:60dB μ V (75 Ω terminated) c:44dB μ V (75 Ω terminated) s:54dB μ V (75 Ω terminated)	
				VHF	50	80	-			
					A P P D.	C H K D.	D S G D.	MODEL NO: TADM-H102F		
								TITLE: SPECIFICATION		
				DOCUMENT NO: BC 40389 (15/23)						
SYMB	NO	APPD	CHKD	DSGD						

Item	Specification				Note	
	min.	typ.	max.	unit		
3-3-4. CH 6 beat	45	60	-	dB	ANT INPUT level desire : 60dB μ V (75 Ω terminated) undesire : 54dB μ V (75 Ω terminated)	
3-3-5. CH A-5 beat	45	60	-	dB	ANT INPUT level desire : 60dB μ V (75 Ω terminated)	
3-3-6. CB rejection.	0.535 MHz ~ 30 MHz -7dBm min				desire : 55.25MHz ~ 83.25MHz (Ch.2 ~ Ch.6) -66dBm	
3-3-7. 1% Cross modulation						
	CH		A(dB μ V)		B(dB μ V)	
	UHF		67		84	
	VHF	W+11 ~ J		67		89
		13 ~ 2		67		89
Cross modulation value should be within hatched area. ※ Tuner should be measured for 1% cross modulation with ± 2 channel undesired signal.						
3-3-8. +B shift	CH	min.	typ.	max.	unit.	note
	UHF	-	-	250	kHz	+B $\pm 10\%$ PLL "ON"
	VHF HIGH	-	-	250		
						MODEL NO: TADM-H102F
						TITLE: SPECIFICATION
						DOCUMENT NO: BC 40389 (16/23)
SYMB	NO	APPD	CHKD	DSGD		

3-3-9. Over range	CH	Vtu	min.	typ.	max.	unit.
	UHF	28.0 V	2.0	-	-	MHz
		0.5 V	2.0	-	-	
	VHF	28.0 V	2.0	-	-	
		0.5 V	2.0	-	-	
3-3-10. Noise Figure	CH	min.	typ.	max.	unit.	
	UHF	-	9.0	14.0	dB	
	VHF HIGH	-	8.0	14.0		
	VHF LOW	-	8.0	13.0		
3-3-11. Power gain deviation	UHF	-	6	12	dB	
	VHF HIGH	-	6	12		
	VHF LOW	-	6	12		
3-3-12. Temperature shift	W+12 ~ 69	-	-	3000	kHz	25°C ± 25°C
	W+11 ~ J	-	-	3000		
	13 ~ 2	-	-	2000		

3-4. IF section

When the test electrical characteristics when there are no instruction.
fp input level is 70 dBμV and p/s ratio is -7 dB.

Item	Specification				Note
	min.	typ.	max.	unit	
3-4-1. Video S/N	VHF	45	47	-	dB A figure in parentheses is spec by LGIT measurement system 50% white signal. 87.5% modulation. Subcarrier trap : on HPF : 100 kHz, LPF : 4.2 MHz
	UHF	45	47	-	

					APPD.	CHKD.	DSGD.	MODEL NO: TADM-H102F
								TITLE: SPECIFICATION
								DOCUMENT NO: BC 40389 (17/23)
SYMB	NO	APPD	CHKD	DSGD				

Item	Specification				Note
	min.	typ.	max.	unit	
3-4-10. Audio output level	280	370	500	mVrms	1kHz / ± 25 kHz dev. standard color bar:87.5% mod.
3-4-11. Audio distortion	-	1	2	%	1kHz / ± 25 kHz dev. standard color bar:87.5% mod.
3-4-12. Audio frequency characteristics 50 Hz 10 kHz	-3 -3	0 0	+3 +3	dB	20Hz ~ 12kHz Based on 1kHz / ± 7.5 kHz dev. standard color bar:87.5% mod. PRE-EMP (75usec) : "ON"
3-4-13. Audio S/N	42	50	-	dB	1kHz / ± 25 kHz dev. standard color bar:87.5% mod. Use IHF filter.
3-4-14. SYNC buzz	-	50	100	mVp-p	standard color bar:87.5% mod. 400Hz/ ± 25 kHz dev. P/S=-17dB
3-4-15. AFT alignment accuracy	1.5	2.5	3.5	Vdc	Alignment center : 2.5V IF input level : 90dB μ V P/S=-7dB standard color bar:87.5% mod. (25°C \pm 10°C & 0 ~ 45% Hum)
3-4-16. SIF Output Level	70	75		dB μ V	Video mod. : Color Bar 87.5% mod. RF INPUT Level = 70 dB μ V P/S = -6dB Measure peak of 4.5MHz carrier Level using Spectrum Analyzer and 1:10 Probe.

					A P P D.	C H K D.	D S G D.	MODEL NO: TADM-H102F
					/			TITLE: SPECIFICATION
								DOCUMENT NO: BC 40389 (19/23)
SYMB	NO	APPD	CHKD	DSGD				

4. ENVIRONMENTAL TESTS

(規格値는 初期値에 대하여 變化 範圍를 表示한다)

Item	Specification			Note
	TUNER	MODULATOR	IF	
4-1. Heat load test	OSC frequency (PLL : ON) UHF : ±100kHz VHF : ±100kHz	Video modulation ±8%max Video carrier frequency ±150kHz max Video carrier output level ±4dB max Audio modulation ±18% max Audio carrier frequency ±20kHz max P/S ratio ±3dB max	Video S/N ±6dB Video output ±0.2Vp-p max Noise limiting sensitivity ±6dB Audio output ±30% max AFT OUTPUT 1.4 ~ 3.5 Vdc	test condition 4-1-1
4-2. Humidity load test	same as in item 4-1			test condition 4-2-1
4-3. Cold test	same as in item 4-1			test condition 4-3-1
4-4. Operating life test	same as in item 4-1			test condition 4-4-1
4-5. High voltage test	same as in item 4-1			test condition 4-5-1
4-6. Vibration test	same as in item 4-1			test condition 4-6-1
4-7. Impact test	same as in item 4-1			test condition 4-7-1

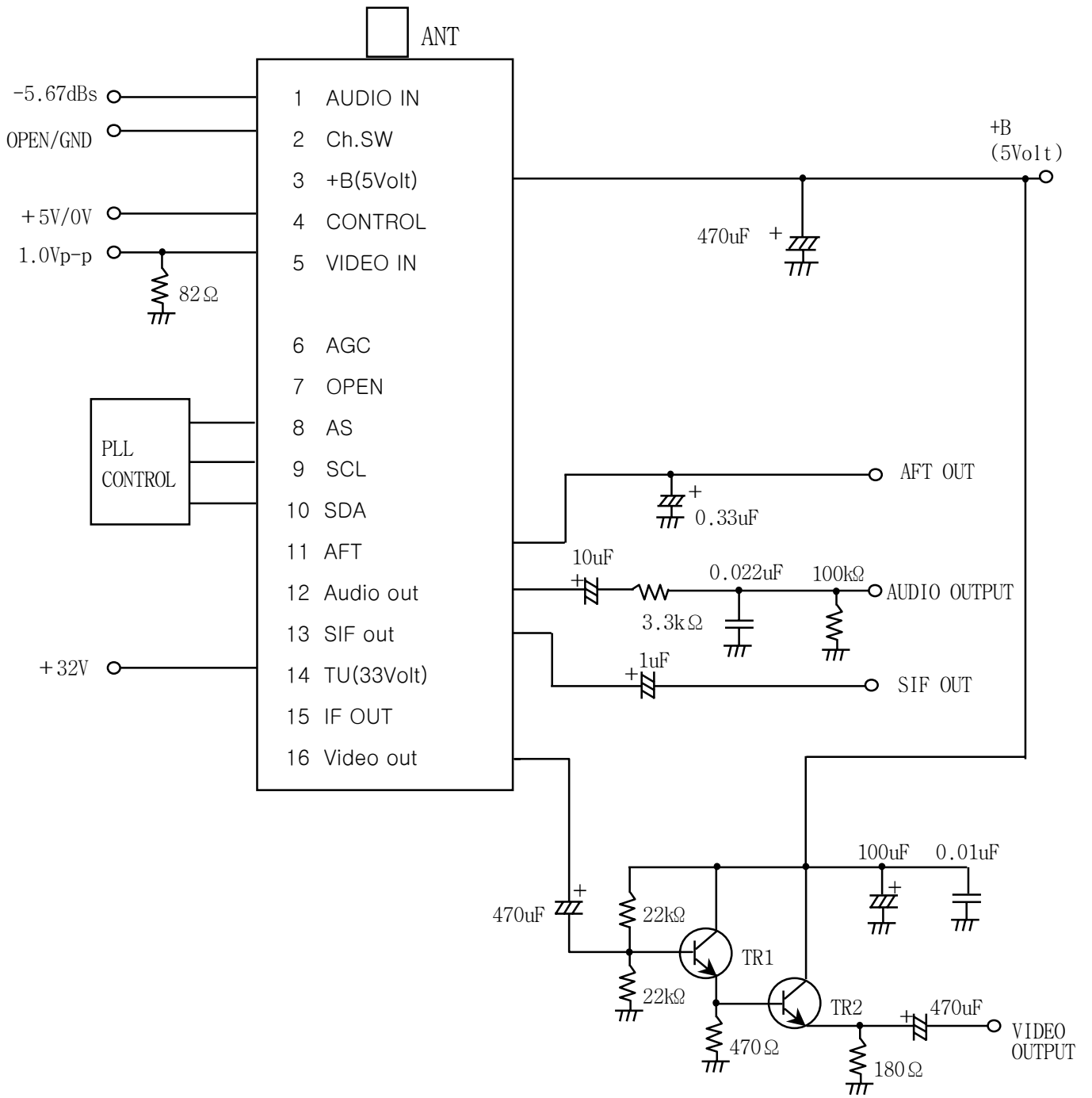
					A P P D.	C H K D.	D S G D.	MODEL NO: TADM-H102F
					/			TITLE: SPECIFICATION
								DOCUMENT NO: BC 40389 (20/23)
SYMB	NO	APPD	CHKD	DSGD				

Environmental test condition									
Item					Test condition				
4-1-1 Heat load test					1. Initial value measure at standard test condition. 2. Leave samples in $70^{\circ}\text{C} \pm 2^{\circ}\text{C}$ for 96 ± 5 hours, and in standard test condition for 30 minutes, then take measurements within 1 hour. 3. Supply voltage : standard $\pm 10\%$ 4. Supply voltage cycle : 1.5h on, 0.5h off				
4-2-1 Humidity load test					1. Leave samples in $40 \pm 5^{\circ}\text{C}$ for 24 ± 2 hours, and in standard test condition for 30 minutes, then take measurements. 2. Leave samples in $40 \pm 5^{\circ}\text{C}$ 80 ~ 90% rh, for 96 ± 5 hours, and in standard test condition for 30 minutes, then take measurements within 1 hour. 3. Supply voltage : standard +10% 4. Supply voltage cycle : 1.5h on, 0.5h off				
4-3-1 Cold test					1. Initial value measure at standard test condition. 2. Leave samples in $-20^{\circ}\text{C} \pm 2^{\circ}\text{C}$ for 96 ± 5 hours, and in standard test condition for 2 hours, then take measurements within 1 hour.				
4-4-1 Operating life test					1. Take measurements in standard test condition. 2. Leave samples for 1000 hours, then take measurements. 3. Supply voltage : standard				
4-5-1 High voltage test					Ant. IN : $\pm 15\text{kV}$, 10 times (150pF charged) series R=150 Ω				
4-6-1 Vibration test					Vibration test fixture in used to vibrate the tuner with a total amplitude of 1mm and frequency ranging from 10 to 55hz, once per minute consecutively, for 40 minutes in each of three directions, x,y and z.				
4-7-1 Impact test					1. Impact acceleration : 50m/sec ² 2. Impact time : 11msec 3. Impact time & direction : 3 times per each 6 sides				
5. Mechanical characteristics									
5-1 Outline view assembly appearance					No defects of wiring, soldering and assembling. No dirt, rust, corrosion or foreign material.				
					APPD.	CHKD.	DSGD.	MODEL NO: TADM-H102F	
					/			TITLE: SPECIFICATION	
								DOCUMENT NO: BC 40389 (21/23)	
SYMB	NO	APPD	CHKD	DSGD					

Item	Test condition
<p>5-2 Appearance structure</p> <p>Dimension Mounting Weight</p> <p>6. Others</p> <p>6-1. Ant jack Load Test</p>	<p>As assembly drawing. As assembly drawing. Approximately $60 \pm 5g$.</p> <p>Crack, deflection and shaking should not be existed with 15kg.cm banding moment after caulking.</p> <div data-bbox="606 660 1013 918" data-label="Diagram"> </div>

					A P P D.	C H K D.	D S G D.	MODEL NO: TADM-H102F
					/			TITLE: SPECIFICATION
								DOCUMENT NO: BC 40389 (22/23)
SYMB	NO	APPD	CHKD	DSGD				

7. TEST CIRCUIT



NOTE

TR1, TR2 : 2SC1213 or
EQUIVALENT

					APPD.	CHKD.	DSGD.	MODEL NO: TADM-H102F
								TITLE: SPECIFICATION
								DOCUMENT NO: BC 40389 (23/23)
SYMB	NO	APPD	CHKD	DSGD				

S P E C I F I C A T I O N

T M B L O C K

(RF-MOD. + TUNER + PIF)

T C M N 0 6 8 2 P A 2 0 C

(NTSC M / USA)

WRITTEN	CHECKED	APPROVED

SAMSUNG ELECTRO-MECHANICS CO ., LTD.

MAIN FACTORY

ADD : 314, MAETAN-DONG, PALDAL-KU, SUWON-CITY, KYUNGKI-DO, KOREA

TEL : (031)210-6860,6026 FAX : (031)210-6380

CHINA FACTORY

ADD : 27, HEINJUCHENG-ROAD, TIANJIN, CHINA

TEL : (022)8301307~9 FAX : (022)8307436

THAILAND FACTORY

ADD : WELLGROW INDUSTRIAL ESTATE 93 M005 T. BANGSMARK A.BANGPAKONG

CHACHENSAO 24130 THAILAND

TEL : (65)(038)570-191~2 FAX : (65)(038)570-193

MEXICO FACTORY

ADD : AV.CORPORATION NO.4-C PARQUE IND.INTERNATIONAL TIJUANA

DELEGATION MESA DE OTAY 22390 TIJUANA B.C.,MEXICO

TEL : (52)(66)24-0778~80 FAX : (52)(66)24-0781

INDEX

Item NO.	ITEM	Page
1. General Specification	Application	2
	Receiving channels	2
	Intermediate frequency	2
	Receiving system	2
	Output channel of modulation	2
	Operating conditions for guarantee	2
	Storage condition	2
	Testing ambient condition	2
	Terminal names and functions	3
	Semiconductor used	4
	Current consumption & supply voltage	4
PLL data format	4 ~ 6	
2. Electrical characteristics	RF section (Video, Sound, Output, ANT.charateristic)	7 ~ 9
	Tuner section	10~12
	IF section	13~16
3. Environment test	Heat load test	17
	Humidity load test	17
	Cold test	17
	Vibration test	17
	Operating life test	18
	Impact test	18
4. Mechanical Characteristics	Static electricity test	18
	Outdrawing diagram	19
5. Circuit view	Circuit diagram	20

1. GENERAL SPECIFICATION

1) APPLICATION

This specification is applied to the VCR receiving the US 181 channel system VHF and UHF bands. (RF modulator output channel is 3 or 4 CH.)

2) RECEIVING CHANNELS

- * M NTSC / USA
- * UHF : CH. W+12 - CH. 69
- * VHF HIGH BAND : CH. C - CH. W+11
- * VHF LOW BAND : CH. 2 - CH. B

3) INTERMEDIATE FREQUENCY

- * PIF : 45.75MHz
- * SIF : 41.25MHz

4) RECEIVING SYSTEM

- * UPPER HETERODYNE SYSTEM

5) OUTPUT CHANNEL OF MODULATION

- * 3 CH. : OPEN (61.25MHz)
- * 4 CH. : GND (67.25MHz) By controlled PIN NO.2 (CH)

6) OPERATING CONDITIONS FOR GUARANTEE

- * TEMPERATURE : -10 ~ 60°C , HUMIDITY 85% OR LESS

7) STORAGE CONDITION

- * TEMPERATURE : - 20 ~ 70°C , HUMIDITY 90% OR LESS

8) TESTING AMBIENT CONDITION

- * DEFINED AS TEMPERATURE OF $25 \pm 5^{\circ}\text{C}$ AND HUMIDITY OF $65 \pm 10\% \text{ RH}$

9) REGULATION

- * TCMN0682PA20C IS APPLIED FOR FCC REGULATION.

10) TERMINAL NAMES AND FUNCTIONS

ITEM	PIN NO.	TERMINAL	FUNCTION	REMARK
R F SECTION		RF INPUT	RF SIGNAL INPUT TERMINAL	
		RF OUTPUT	RF SIGNAL OUTPUT TERMINAL	
	1	A I	AUDIO INPUT	
	2	C H	CHANNEL CONTROL(OPEN:3CH,GND:4CH)	
	3	B +	POWER SUPPLY TERMINAL	5V DC
	4	CONTROL	VIDEO /TV CONTROL TERMINAL	
TUNER / PIF SECTION	5	V I	VIDEO SIGNAL INPUT	
	6	N.C	-	
	7	N.C	-	
	8	SAS	SERIAL ADDRESS TERMINAL	
	9	SCL	SERIAL CLOCK SUPPLY TERMINAL	
	10	SDA	SERIAL DATA SUPPLY TERMINAL	
	11	AFT	AFT OUTPUT TERMINAL	
	12	A0	AUDIO OUTPUT TERMINAL	
	13	SIF	SIF OUTPUT TERMINAL	
	14	BT	TUNING VOLTAGE POWER SUPPLY TERMINAL	33V DC
15	N.C	-		
16	VO	VIDEO OUTPUT TERMINAL		

S P E C I F I C A T I O N

PAGE

T M - B L O C K

4 / 20

11) SEMICONDUCTOR USED

ITEM	FUNCTION		Q'TY	NAME OF SEMICONDUCTOR	REMARK
R F SECTION	I C		1	LA7161V-A	
	S/W TRANSISTOR		2	2SC5345U OR BF799W	
	S/W DIODE		1	KDS114E	
TUNER SECTION	MOPLL IC		1	TDA6503ATS	
	VVC DIODE		11	BB153, BB149(BB178, BB179)	
	RF AMP	VHF	1	BF909WR	
		UHF	1	BF909WR OR BF2030WR	
PIF SECTION	I C		1	LA75676V	
	FILTER	SAW-FILTER	1	M1865D	
		C - TRAP	1	TPS4.5MB, XT4.5MB	
		C - FILTER	1	SFSH4.5MDB, LT4.5MH	

12) CURRENT CONSUMPTION & SUPPLY VOLTAGE

TERMINAL		STANDARD SUPPLY VOLTAGE(V)	CURRENT CONSUMPTION(mA)			GURANTEE VOL. RATINS
			MIN.	TYP.	MAX.	
MOD.	MB	5 ± 0.1V DC	-	50	55	4.9 ~ 5.1 V
	CON.	5 ± 0.1V DC	-	0.047	0.173	4.9 ~ 5.1 V
TUNER AND PIF	BT	33 ± 0.1V DC	-	2.5	5	30 ~ 34 V
	BP	5V ± 0.1V DC	115	140	165	4.9 ~ 5.1 V

13) PLL DATA FORMAT

13-1) Description of Tuner PLL Block

The PLL on this IC supports the IIC bus control format.
 The control pins are as shown in the table below.
 ref) ADSW(Address selection), SCL(SCL input), SDA(SDA I/O)

13-2) INPUT SIGNAL LEVEL(SCL, SDA)

HIGH -LEVEL INPUT VOLTAGE : 3.0V MIN.

LOW -LEVEL INPUT VOLTAGE : 1.5V MAX.

13-3) X-TAL FREQUENCY : 4MHz

STEP SIZE IS CHANGED BY REFERENCE DIVIDER.

13-4) Address Setting

The response address can be changed according to the ADSW pin voltage, so that multiple PLL can exist within one system.

ADSW pin voltage	MA1	MA0
0 to 0.1Vcc	0	0
Open or 0.2Vcc to 0.3Vcc	0	1
0.4Vcc to 0.6Vcc	1	0
0.9Vcc to Vcc	1	1

HEXA MODE = C2

13-5) The TDA6503ATS control format is as follows

13-5-1) Write-mode

Byte Write Data	Byte	Bits								Remarks
		MSB							LSB	
Address byte	ADB	1	1	0	0	0	MA1	MA0	0	A
Divider byte 1	DB1	0	N14	N13	N12	N11	N10	N9	N8	A
Divider byte 2	DB2	N7	N6	N5	N4	N3	N2	N1	N0	A
Control byte	CB	1	0	0	0	*	0	1	0	A
band SW byte	BB	X	X	X	X	PUHF	X	PVHFH	PVHFL	A

13-5-2) Read-mode : Slave Transmitter

Mode	bit7	bit6	bit5	bit4	bit3	bit2	bit1	bit0	
Address byte	1	1	0	0	0	MA1	MA0	1	A
Status byte	POR	FL	R	1	1	A2	A1	A0	A

13-5-3) Description of symbols used in table

SYMBOL	DESCRIPTION																
A	Acknowledge bit																
MA1,MA0	programmable address bits (MA1=0 ,MA0=1) ref: 13-4)																
N14 to N0	programmable divider bits																
CP	charge pump current bit(output current) logic 0 : charge pump current is 60 μ A(default) logic 1 : charge pump current is 280 μ A																
OS	tuning amplifier control bits logic 0 : tuning voltage is 'on' (during normal operating) logic 1 : tuning voltage is 'off';high impedance output of pin VT(default)																
PVHFL,PVHFH,PUHF and FMST	PMOS ports control bis: logic 0 : corresponding buffer is 'off'(default) logic 1 : corresponding buffer is 'on'																
X	don't care : may be a logic 0 or a logic 1.																
RSA and RSB	Reference Divider ratio select bits																
	<table border="1" style="width: 100%;"> <thead> <tr> <th>RSA</th> <th>RSB</th> <th>Divider</th> <th>FREQUENCY STEP(KHz)</th> </tr> </thead> <tbody> <tr> <td>X</td> <td>0</td> <td>80</td> <td>50</td> </tr> <tr> <td>0</td> <td>1</td> <td>128(1024)</td> <td>31.25</td> </tr> <tr> <td>1</td> <td>1</td> <td>64</td> <td>62.5</td> </tr> </tbody> </table>	RSA	RSB	Divider	FREQUENCY STEP(KHz)	X	0	80	50	0	1	128(1024)	31.25	1	1	64	62.5
	RSA	RSB	Divider	FREQUENCY STEP(KHz)													
	X	0	80	50													
0	1	128(1024)	31.25														
1	1	64	62.5														
POR	power-on reset flag: logic 0 : at power off logic 1 : at power on																
FL	in-lock flag : logic 0 : loop is not locked logic 1 : loop is locked																
R	ready flag: logic 0 : mode after power-on reset and the PLL is locked logic 1 : in other conditions																
A2,A1 and A0	digital outputs of the 5-level ADC																

2. ELECTRICAL CHARACTERISTICS

2-1. RF SECTION PERFORMANCE

2-1-1. VIDEO CHARACTERISTICS

ITEM	SPECIFICATION			UNIT	REMARK
	MIN.	TYP.	MAX.		
Video Modulation	72	80	88	%	Input signal:1Vp-p white stair step or ramp
Video Maximum Modulation	87	93	99	%	Input signal:1.5Vp-p stair step or ramp
V/S Ratio	10:3.8	10:4	10:4.1		Input signal:1Vp-p white V:S = 10:4
Video Amplitude Frequency Characteristics	-3.0	-0.5	+3.0	dB	Measure range:0.1MHz~4.2MHz Based on 1MHz Audio input signal:None
Differential Gain(DG)	-7	+2	+7	%	Input signal:1.0Vp-p stair step Video Mod. : 80% Luminance :10~90%
Differential Phase(DP)	-7	+1.5	+7	deg	Input signal:1.0Vp-p stair step Video Mod. : 80% Luminance :10~90%
Video S/N	45	47	-	dB	Measurement Conditions -Standard De-modulator. -S/N Meter H.P.F:100KHz, L.P.F:4.2MHz SC trap:ON, Weight:OFF *Input signal Video:100% White signal Audio:None Video band:0.1~4.2MHz
Chroma Beat	58	65		dB	Input signal Video:0.4Vp-p,3.58MHz, Sine wave Audio:None

2-1-2. SOUND CHARACTERISTICS

ITEM	SPECIFICATION			UNIT	REMARK
	MIN.	TYP.	MAX.		
Audio Modulation	64	80	96	%	Input signal:1.1Vp-p Sine wave 1KHz (100% Mod.=± 25KHzp-p dev.)
Audio Maximum Modulation	150				Input signal : 1KHz, Sine wave
Audio Amplitude Frequency Characteristics	-3	+1.0	+3	dB	Input signal:1.1Vp-p Sine wave Measure range:50Hz~10KHz Based on 1KHz
Audio Distortion		0.3	2.0	%	Input signal: 1.1Vp-p,1KHz De-emphasis :0N(75usec)
Audio S/N	48	-	-	dB	Video input signal :Black burst Reference audio input signal :1.1Vp-p,1KHz,Sine wave

2-1-3. OUTPUT CHARACTERISTICS

ITEM	SPECIFICATION			UNIT	REMARK
	MIN.	TYP.	MAX.		
Video Carrier	-80	Fp	+80	KHz	Video input signal:None
Sound Carrier	-7	Fs	+7	KHz	Audio input signal:None
Outband spurious	30	-		dB	FCC Standard Precedure Measure range:0~1GHz
Inband spurious	60	-	-	dB	Input signal Video:None Audio:None Measure range:Fp ~ +4.5MHz
Video Carrier Output Level	63	66	69	dB μ V	
P/S Ratio	13	16	19	dB	Audio input signal:None

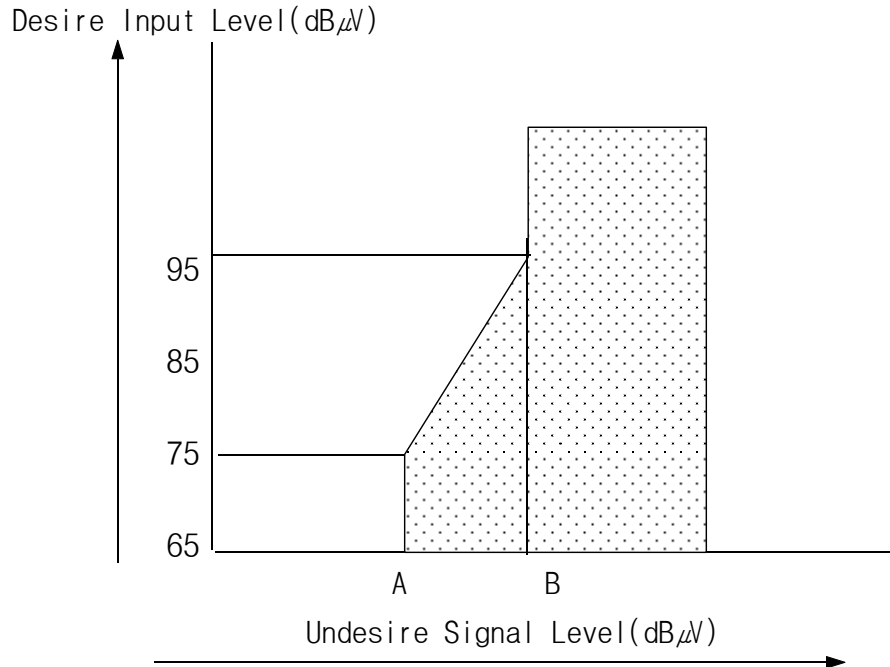
2-1-4. ANTENNA CHARACTERISTICS

ITEM	SPECIFICATION			UNIT	REMARK
	MIN.	TYP.	MAX.		
Insertion Loss	-	-	7.0	dB	ANT IN to ANT OUT Mode:TV (at MOD. OFF)
VSWR			3		ANT OUT Terminal Mode:TV (at MOD. OFF) 54~810MHz Mode:VCR(at MOD. ON) 61~ 72MHz
Isolation	60	-	-	dB	Isolation from ANT OUT to ANT IN:Mode-VCR(at MOD. ON) 61~72MHz
ANT. IN Leakage		6	9.5	dB μ V	Mode:VCR (at MOD. ON) 0~1GHz ANTENA-OUT 75 Ω Loaded Applied for FCC

2-2. TUNER SECTION

ITEM	SPECIFICATION			UNIT	REMARK
	MIN.	TYP.	MAX.		
IF Rejection					
UHF	60	90	-	dB	GR = 0dB (75Ω terminate) GR:Gain Reduction
VHF High	60	90	-		
Low	50	80	-		
UHF	40	65	-		
VHF High	50	75	-	GR = 30dB	
Low	45	70	-		
Image Rejection					
UHF	50	60	-	dB	GR = 0dB (75Ω terminate) GR:Gain Reduction
VHF W+11~J	50	65	-		
13~2	55	65	-		
UHF	40	55	-		
VHF W+11~J	45	60	-	GR = 30dB	
13~2	50	65	-		
CH 6 Beat	50			dB	ANT INPUT Des:60dB(μV),(75Ω terminate) Und:54dB(μV),(75Ω terminate)
CH A-5 Beat	50			dB	ANT INPUT Des:54dB(μV),(75Ω terminate)
CB Rejection	0.535MHz ~ 30MHz -7dBm Min.				Desire:55.25MHz~83.25MHz (CH2 ~ CH6) -66dBm s/i=40dB
Available Input signal level	90	100		dBμV	Distortion is nothing on normal condition.

1% Cross Modulation



CH	A (dB μ V)	B (dB μ V)
UHF	≥ 64	≥ 84
VHF	≥ 64	≥ 84

Cross modulation value should be within hatched area.

A = GR = 0dB

B = GR = 30dB

※ Tuner should be measured for 1% cross modulation with ± 2 channel undesired signal.

Over Range	CH	OSC Fre.	MIN.	TYP.	MAX.	UNIT
	UHF	High-end	+1			MHz
		Low -end	-2			
	V High	High-end	+1			
		Low -end	-2			
	V Low	High-end	+2			
Low -end		-2				

S P E C I F I C A T I O N

PAGE

T M - B L O C K

12 / 20

Noise Figure	CH	MIN.	TYP.	MAX.	UNIT
	VHF			12.5	dB
	CATV			12.5	
	UHF			14	
Lock-up time (Tuning searching time)		Band low ch.<->high ch.		UNIT	REMARK
	VHF	100(typ.)		ms	CP = 0 (Charge pump current=± 50μA)
	CATV	100(typ.)			
	UHF	100(typ.)			
ANT Local Radiation	Applied for FCC			When Tuner will be mounted in standard set box, field strength local oscillator should be measured. (Measurement distance:3m)	
Accuracy of Oscillator	MIN.	TYP.	MAX.	UNIT	
	-80		+80	KHz	

2-3. IF SECTION

When test the electrical characteristics, Fp input level is 70dB μ V,
P/S=-7dB, unless otherwise specified.

ITEM	SPECIFICATION			UNIT	REMARK
	MIN.	TYP.	MAX.		
Video S/N					100% white signal. 87.5% modulation. Subcarrier trap:ON HPF:100KHz, LPF:4.2MHz ANT input level
VHF	45	47		dB	VHF:70dB μ V, UHF:70dB μ V (75 Ω terminate)
UHF	45	47			
Video Noise Limit Sensitivity					100% white signal. 87.5% modulation. Subcarrier trap:ON HPF:100KHz, LPF:4.2MHz Video S/N=30dB
VHF			48	dB μ V	
UHF			48		
Video Output Level	0.8	1.0	1.2	Vp-p	Standard color bar:87.5% mod.
Sync Ratio	23.6	28	33.6	%	Standard color bar:87.5% mod. V+S=100%
Color Burst Level	220	280	340	mVp-p	Input Level : 70dB μ V Standard color bar:87.5% mod.

S P E C I F I C A T I O N

PAGE

T M - B L O C K

14 / 20

ITEM	SPECIFICATION			UNIT	REMARK
	MIN.	TYP.	MAX.		
Video Amplitude Frequency Characteristics					Multi-burst Signal:87.5% mod. 0.5MHz Reference
1.0 MHz	-3	-1	1	dB	
2.0 MHz	-3	-1	1		
3.0 MHz	-4	-1	2		
3.58MHz	-6	-2	0		
Sin ² 2T Pulse Response	80	90		%	Sin ² 2T Pulse & bar:87.5% mod.
Differential Gain		5	8	%	5 stair step:87.5% mod. Set modulation at the peak of 5th chroma signal.
Differential Phase		5	8	deg	5 stair step:87.5% mod. Set modulation at the peak of 5th chroma signal.
Y/C Delay time	-200	-50	100	nsec	Input Sin ² 2T Pulse & Bar. Use VM700A(Tektronix)
Chroma S/N					100% Chroma signal(RED) 87.5% modulation. Subcarrier trap:0FF HPF:100Hz, LPF:500KHz Ant input level VHF:70dB μ V, UHF:70dB μ V (75 Ω terminate)
AM	49	52		dB	
PM	48	51			
Audio Output Level	200	300	400	mV rms	1KHz/ \pm 15KHz Dev.(60%) Standard color bar:87.5% mod. De-emphasis:0N (ref: figure A of page 16)
Audio Distortion [CH:11]		0.8	3	%	1KHz/ \pm 25KHz Dev.(100%) Standard color bar:87.5% mod. De-emphasis:0N (ref: figure A of page 16)

S P E C I F I C A T I O N

PAGE

T M - B L O C K

15/ 20

ITEM	SPECIFICATION			UNIT	REMARK
	MIN.	TYP.	MAX.		
Audio Frequency 50 Hz 10KHz	-3 -3	0 0	3 3	dB	50Hz~10KHz 1KHz/± 15KHz Standard Standard color bar:87.5% De-emphasis:0N (ref: figure A of page 16)
Audio S/N	47	55		dB	1KHz/± 15KHz Dev. Standard color bar:87.5% mod. use CCITT filter De-emphasis:0N (ref: figure A of page 16)
Audio Buzz		40	100	mV(p-p)	Standard color bar:87.5% mod. Ant input level:70dB(μV) P/S=-10dB De-emphasis:0N (ref: figure A of page 16)
AFT Alignment Accuracy	1.5	2.5	3.5	V	Alignment center:2.5V RF input level:70dB(μV) P/S=-7dB Standard color bar:87.5% mod. Testing channel:11CH
920KHz Beat	40	48		dB	11CH,100dB(μV)(75Ω term.) P/S=-7dB Video:100% Chroma(RED) $S/i = \frac{3.58MHz\ signal\ level}{920KHz\ beat\ level}$ *Check at Video output terminal

ITEM	SPECIFICATION			UNIT	REMARK
	MIN.	TYP.	MAX.		
4.5MHz Signal Leakage	40	45		dB	11CH, 100dB(μV)(75 Ω term.) P/S=-7dB Video: 100% Chroma(RED) $S/i = \frac{3.58 \text{ MHz signal level}}{4.5 \text{ MHz beat level}}$ *Check at Video output terminal
SIF LEVEL (4.5MHz)	70	75		dB μV	Standard color bar: 87.5% mod. Ant input level: 70dB(μV) P/S=-7dB

「 Figure A 」



[De-emphasis circuits for Test (Audio)]

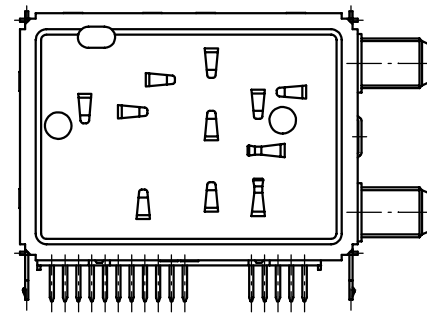
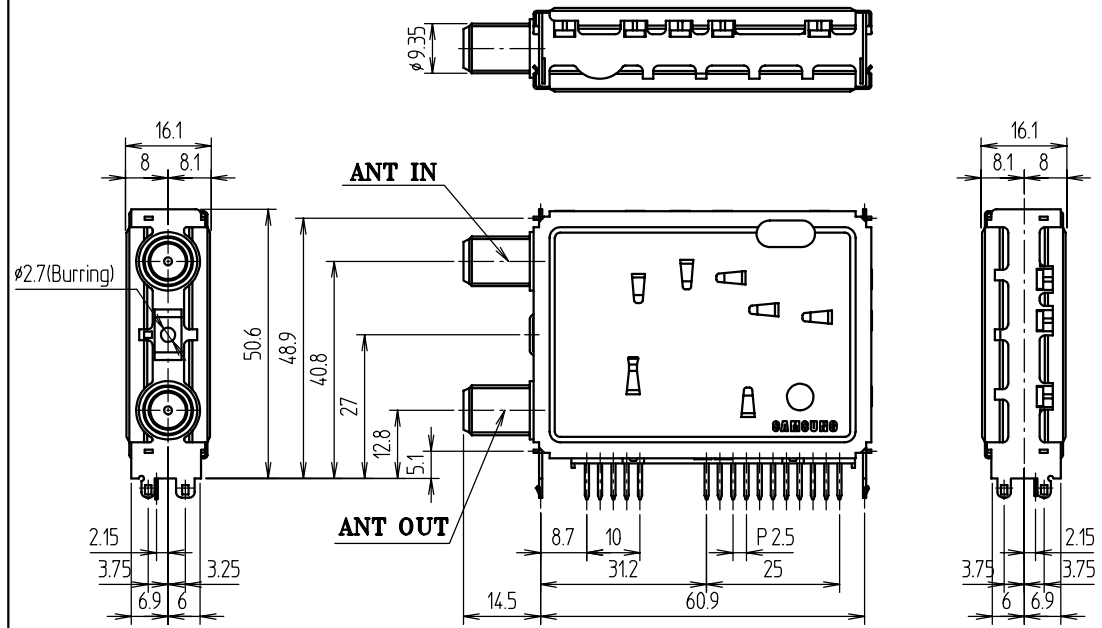
3.ENVIRONMENT TEST

ITEM	SPECIFICATION		TEST CONDITION
	TUNER	IF	
Heat Load Test	OSC frequency UHF: ± 2.0 MHz VHF: ± 2.5 MHz		1.Initial value measure at standard test condition. 2.Leave samples in $70^{\circ}\text{C} \pm 2^{\circ}\text{C}$ for 96 ± 5 hours, and in standard test condition for 30 minutes, then take measurements within 1 hours. 3.Supply voltage : Standard $\pm 10\%$ 4.Supply voltage cycle : 1.5H ON, 0.5H OFF
Humidity Load Test		*VIDEO S/N $\pm 6\text{dB}$ *VIDEO OUTPUT LEVEL $\pm 0.2\text{Vp-p}$ *NOISE LIMIT SENSITIVITY $\pm 6\text{dB}$	1.Leave samples in $40^{\circ}\text{C} \pm 5^{\circ}\text{C}$ for 24 ± 2 hours, and in standard test condition for 30 minutes, then take measurements 2.Leave samples in $40^{\circ}\text{C} \pm 2^{\circ}\text{C}$ for $96 \pm 5\%$ RH hours, for 96 ± 5 hours, and in standard test condition for 30 minutes then take measurement within 1 hours. 3.Supply voltage : Standard $\pm 10\%$ 4.Supply voltage cycle : 1.5 hours ON , 0.5 hours OFF
Cold Test		*AUDIO OUTPUT LEVEL $\pm 30\% \text{ MAX}$	1.Initial value measure at standard test condition. 2.Leave samples in $-20^{\circ}\text{C} \pm 2^{\circ}\text{C}$ for 96 ± 5 hours, and in standard test condition for 2 hours, then take measurements within 1 hours.
Vibration Test			1.Vibration test fixture is used to vibrate the tuner with a total amplitude of 1mm and frequency ranging from 10 to 55Hz, once per minute consecutively, for 40 minutes in each of three directions X, Y and Z.

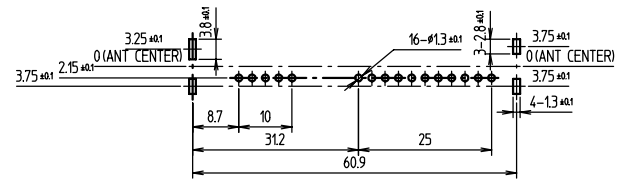
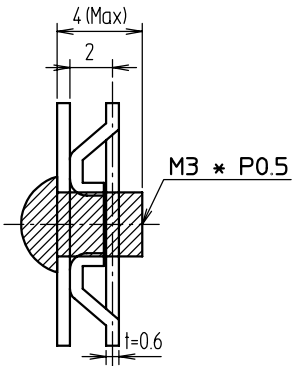
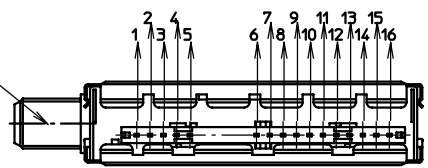
ITEM	SPECIFICATION		TEST CONDITION
	TUNER	IF	
Operating Life Test	OSC frequency	*VIDEO S/N ± 6dB	1.Take measurements in standard test condition. 2.Leave samples for 1000 hours, then take measurements. 3.Supply voltage : Standard
Impact Test		*VIDEO OUTPUT LEVEL ± 0.2Vp-p	1.Impact acceleration : 50 m/s ² 2.Impact time : 11msec 3.Impact direction : 6 sides per each direction
High Test (Static Electricity Test)		UHF:± 2.0MHz VHF:± 2.5MHz	*NOISE LIMIT SENSITIVITY ± 6dB *AUDIO OUTPUT LEVEL ± 30% MAX

NO	PART NAME	Q'TY	MATERIAL	FINISH	REMARK

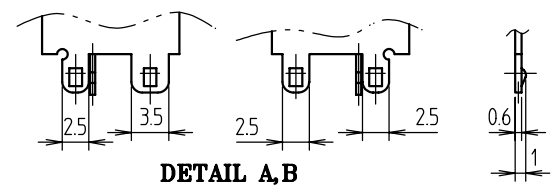
NO	NAME
1	AUDIO IN
2	CH.SW
3	+B
4	CONTROL
5	VIDEO IN
6	N.C(RF AGC)
7	N.C
8	SAS
9	CLOCK
10	DATA
11	AFT OUT
12	AUDIO OUT
13	SIF OUT
14	BT
15	N.C
16	VIDEO OUT



F-CONNECTOR
3/8" x 32NEF-2A



Dimension of P.C.B for Tm-Block Mounting
(Viewed from Copper Pattern)



Rev.	DATE	WRITTEN BY	CHECKED BY	REVISION RECORD			REMARK

UNIT	m	m	DRAW	DESIGNED	CHECKED	APPROVED	NAME	PART NAME	OUTDRAWING
SCALE	1	1	CAD	S.C.M	L.N.K	K.T.H		MODEL NAME	TM-BLOCK
TOLERANCE	±0.5		2002.12.26					SEMCO P/N	20SERIES
SAMSUNG ELECTRO-MECHANICS			File name	TCMN0682PA20C			NO.	B-17700-20000AA-0	

