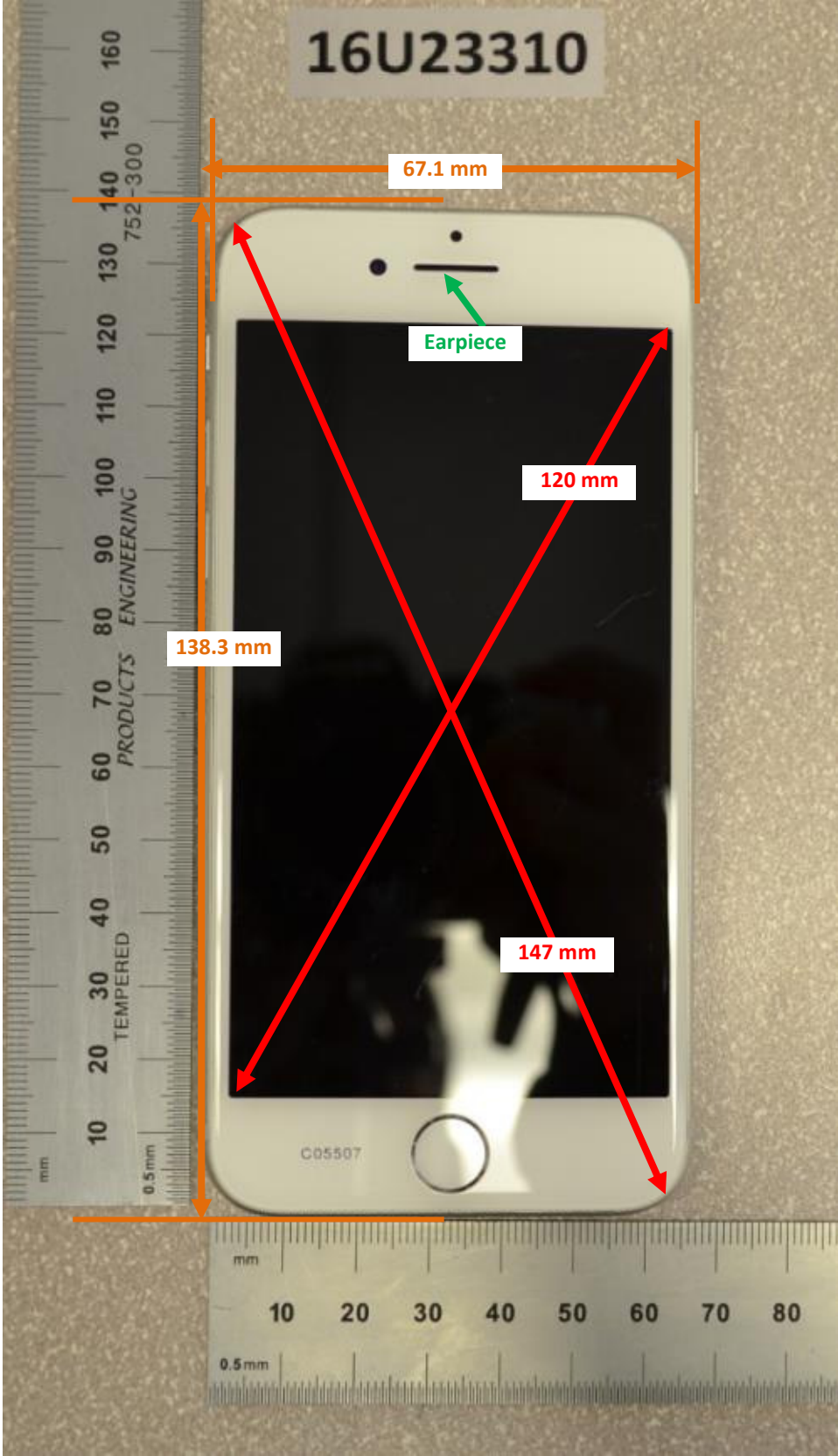


# DUT and SAR Set-up Photos

## Overall Dimensions



Front View of the DUT



Rear View of the DUT



## Setup Photos

Handset Vertical and Horizontal Reference Lines

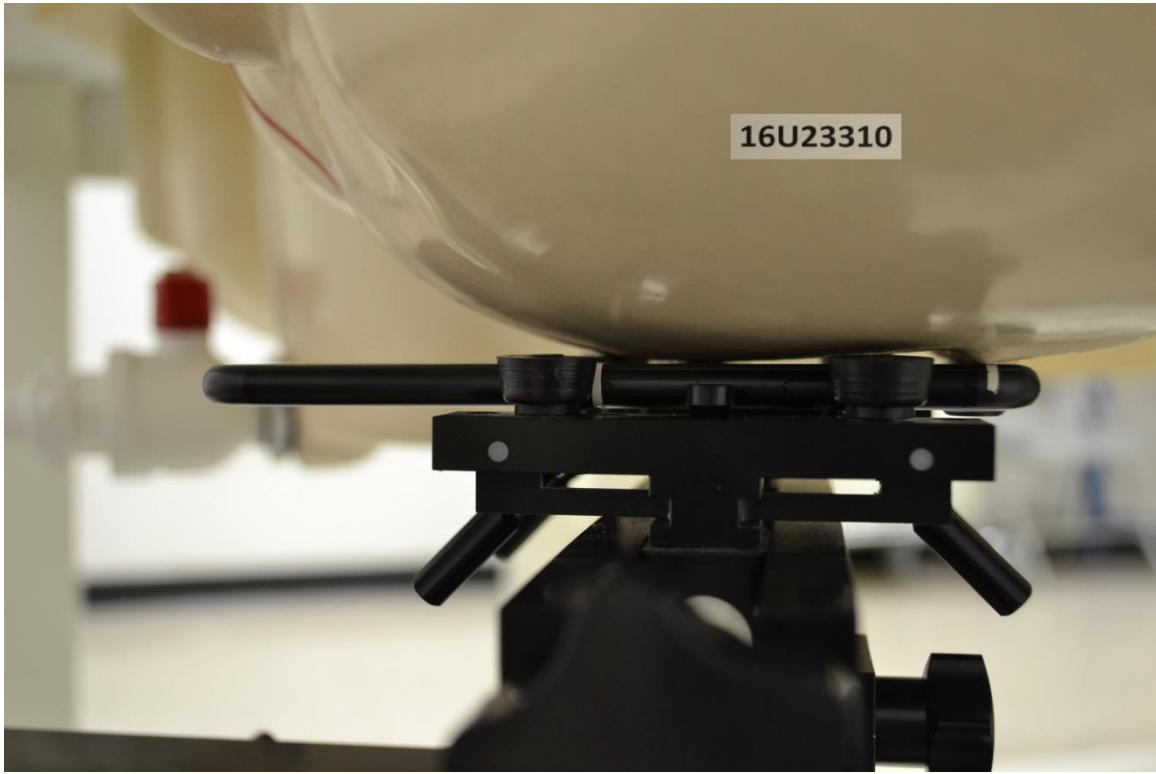
Vertical  
Center Line



Horizontal  
Line

# Head Exposure Conditions

Left Touch



Left Tilt (15°)



Right Touch



Right Tilt (15°)

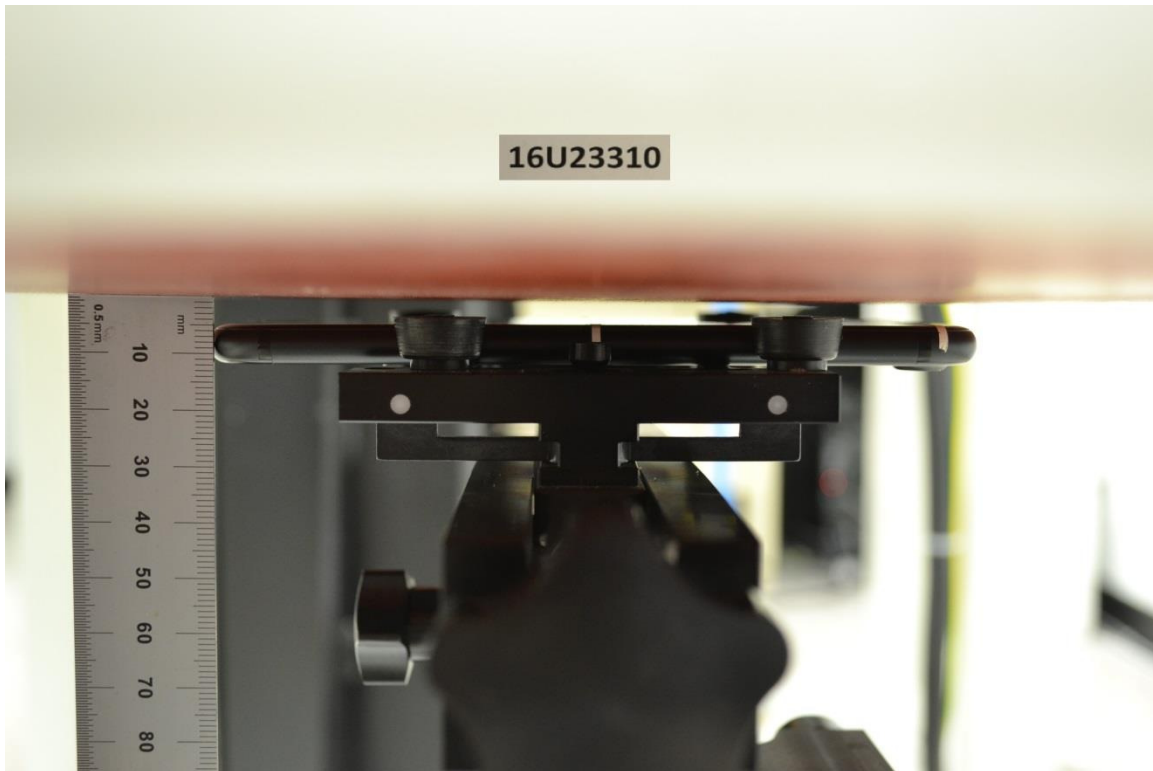


# Body-worn Accessory & Hotspot mode Exposure Conditions

Rear

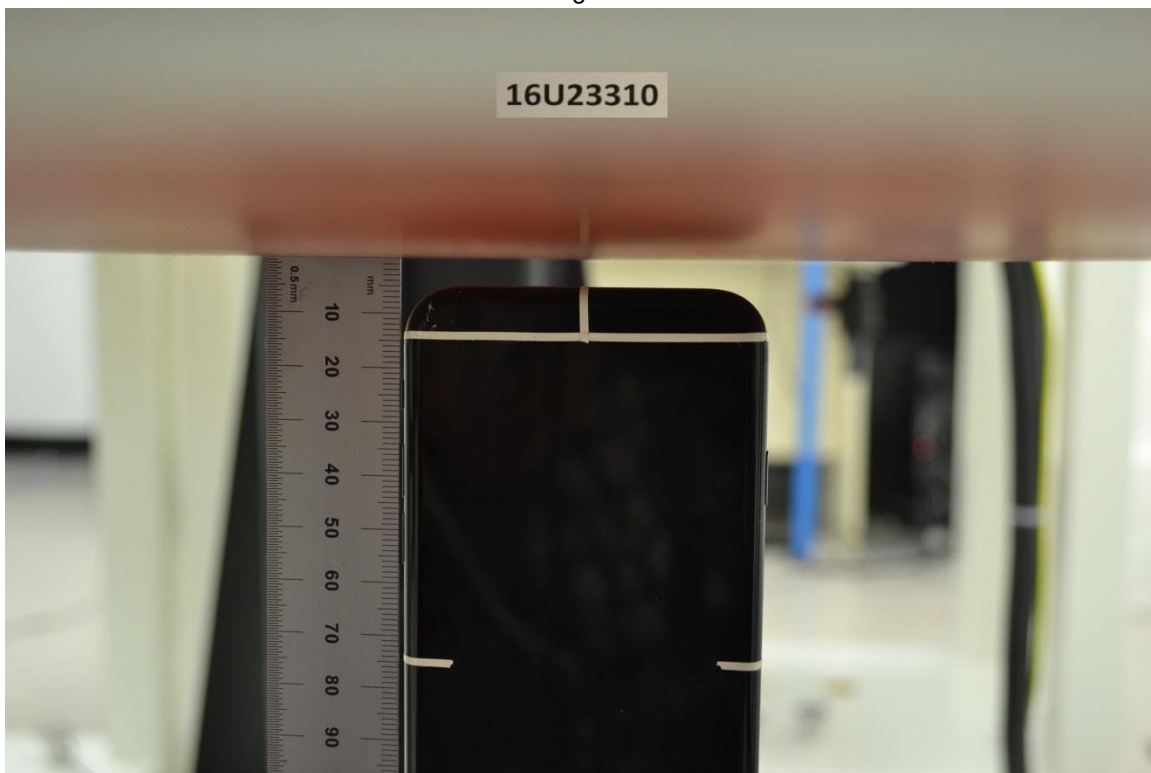


Front



# Hotspot Exposure Conditions

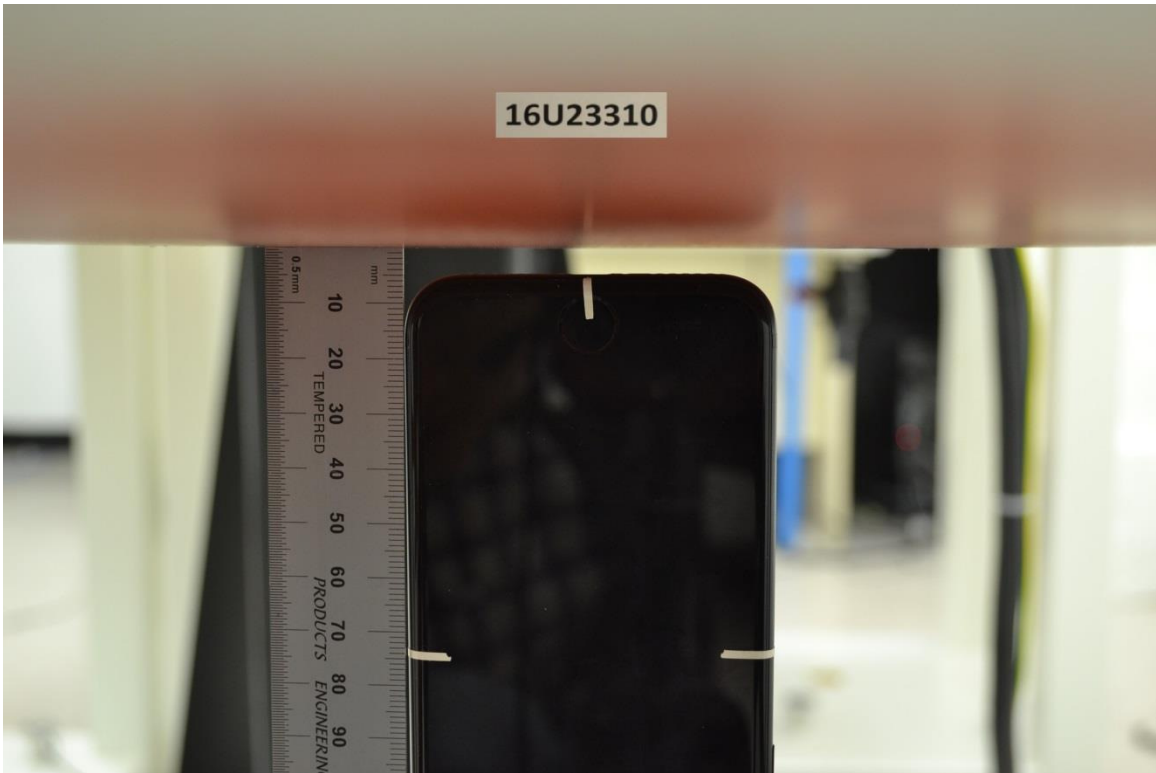
Edge 1



Edge 2



Edge 3



Edge 4

