

## 20161227\_SystemPerformanceCheck-D5GHzV2 SN 1003

Frequency: 5600 MHz; Duty Cycle: 1:1; Room Ambient Temperature: 24.0°C; Liquid Temperature: 23.0°C

Medium parameters used:  $f = 5600$  MHz;  $\sigma = 5.949$  S/m;  $\epsilon_r = 46.612$ ;  $\rho = 1000$  kg/m<sup>3</sup>

DASY5 Configuration:

- Area Scan Setting: Find Secondary Maximum Within: 2.0 dB and with a peak SAR value greater than 0.0012W/kg
- Electronics: DAE4 Sn1439; Calibrated: 7/25/2016
- Probe: EX3DV4 - SN3885; ConvF(3.73, 3.73, 3.73); Calibrated: 9/20/2016;
- Sensor-Surface: 1.4mm (Mechanical Surface Detection)
- Phantom: ELI v4.0 (B); Type: QDOVA001BB; Serial: 1099

**Body/5.6 GHz, Pin=100mW/Area Scan (7x7x1):** Measurement grid: dx=10mm, dy=10mm

Maximum value of SAR (measured) = 19.6 W/kg

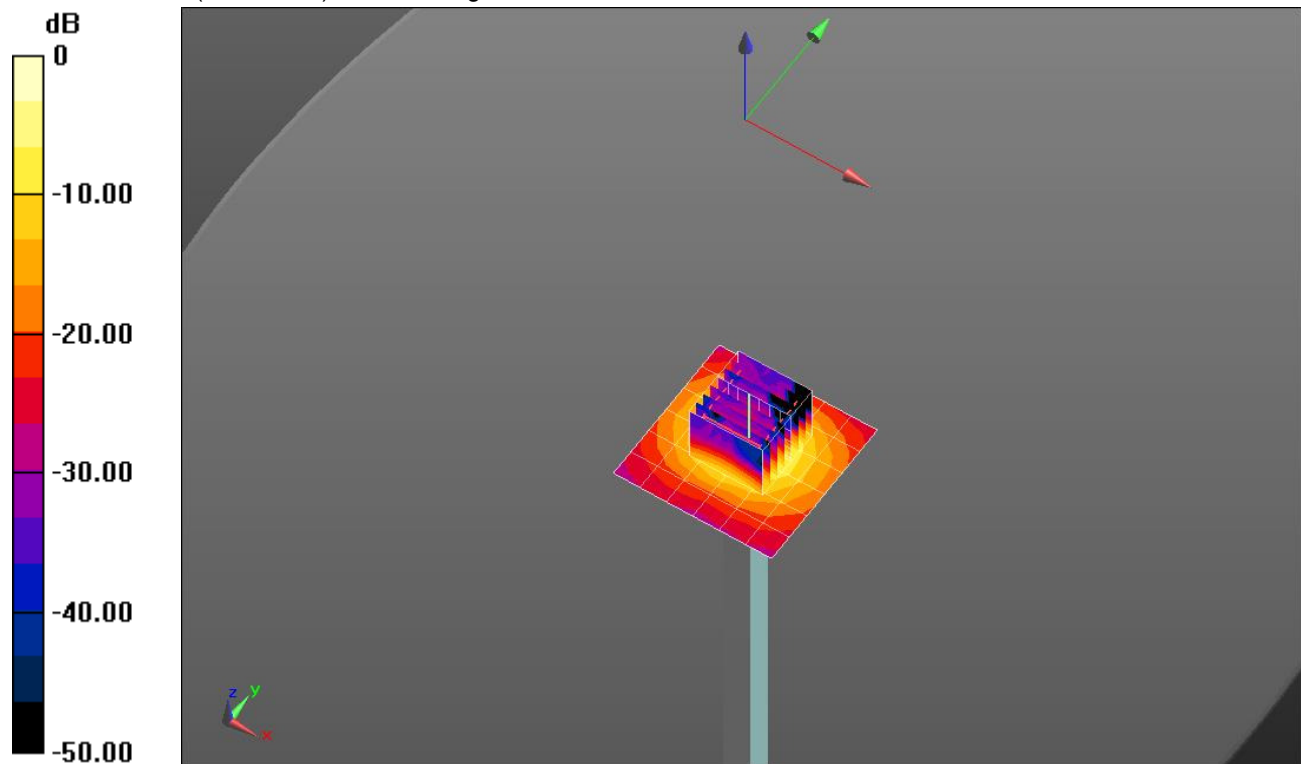
**Body/5.6 GHz, Pin=100mW/Zoom Scan (8x8x7)/Cube 0:** Measurement grid: dx=4mm, dy=4mm, dz=1.4mm

Reference Value = 53.16 V/m; Power Drift = 0.08 dB

Peak SAR (extrapolated) = 34.0 W/kg

**SAR(1 g) = 8.26 W/kg; SAR(10 g) = 2.27 W/kg**

Maximum value of SAR (measured) = 19.8 W/kg

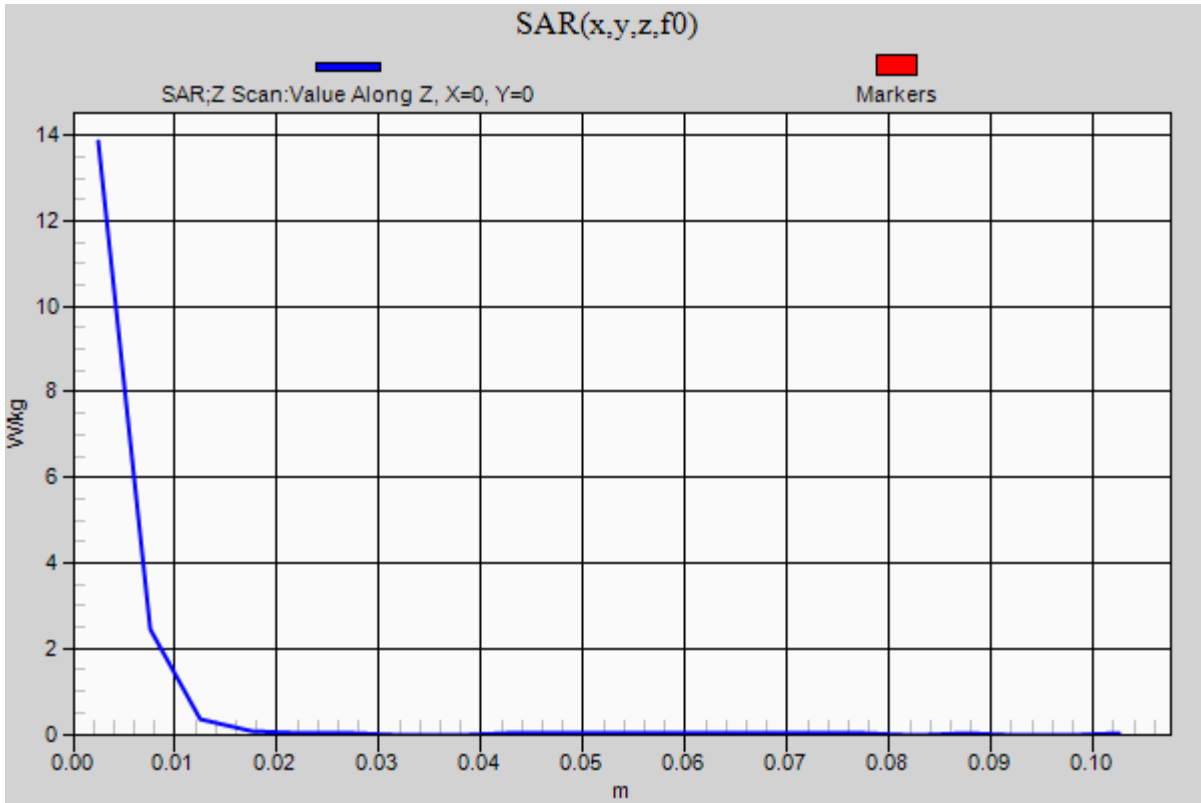


0 dB = 19.8 W/kg = 12.97 dBW/kg

### 20161227\_SystemPerformanceCheck-D5GHzV2 SN 1003

Frequency: 5600 MHz; Duty Cycle: 1:1

**Body/5.6 GHz, Pin=100mW/Z Scan (1x1x21):** Measurement grid: dx=20mm, dy=20mm, dz=5mm  
Maximum value of SAR (measured) = 13.9 W/kg



## 20170117\_SystemPerformanceCheck-D750V3 SN 1019

Frequency: 750 MHz; Duty Cycle: 1:1; Room Ambient Temperature: 24.0°C; Liquid Temperature: 23.0°C

Medium parameters used:  $f = 750 \text{ MHz}$ ;  $\sigma = 0.971 \text{ S/m}$ ;  $\epsilon_r = 53.727$ ;  $\rho = 1000 \text{ kg/m}^3$

DASY5 Configuration:

- Area Scan Setting: Find Secondary Maximum Within: 2.0 dB and with a peak SAR value greater than 0.0012W/kg
- Electronics: DAE4 Sn1439; Calibrated: 7/25/2016
- Probe: EX3DV4 - SN3885; ConvF(9.73, 9.73, 9.73); Calibrated: 9/20/2016;
- Sensor-Surface: 2.5mm (Mechanical Surface Detection)
- Phantom: ELI v5.0 (A); Type: QDOVA001BB; Serial: 1120

**Body/Pin=100 mW/Area Scan (7x7x1):** Measurement grid: dx=15mm, dy=15mm

Maximum value of SAR (measured) = 1.07 W/kg

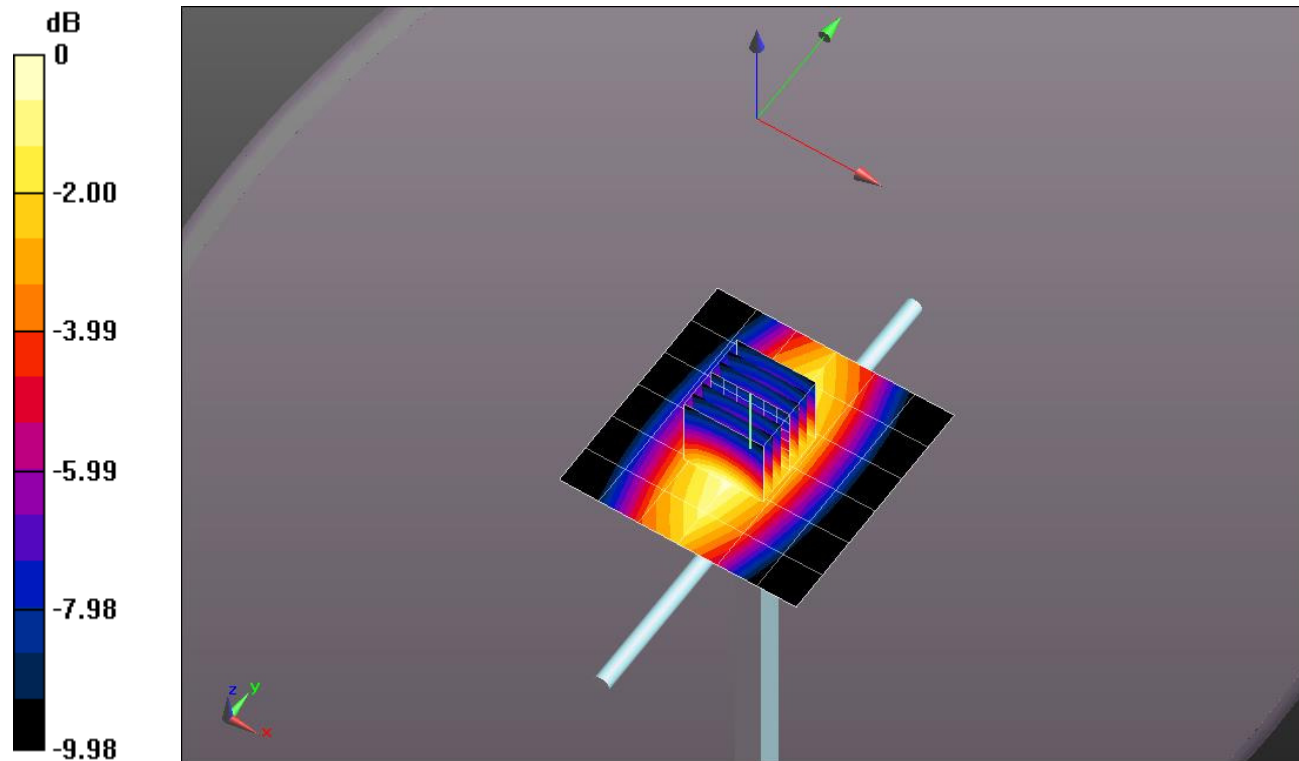
**Body/Pin=100 mW/Zoom Scan (7x7x7)/Cube 0:** Measurement grid: dx=5mm, dy=5mm, dz=5mm

Reference Value = 33.56 V/m; Power Drift = -0.00 dB

Peak SAR (extrapolated) = 1.31 W/kg

**SAR(1 g) = 0.891 W/kg; SAR(10 g) = 0.593 W/kg**

Maximum value of SAR (measured) = 1.08 W/kg

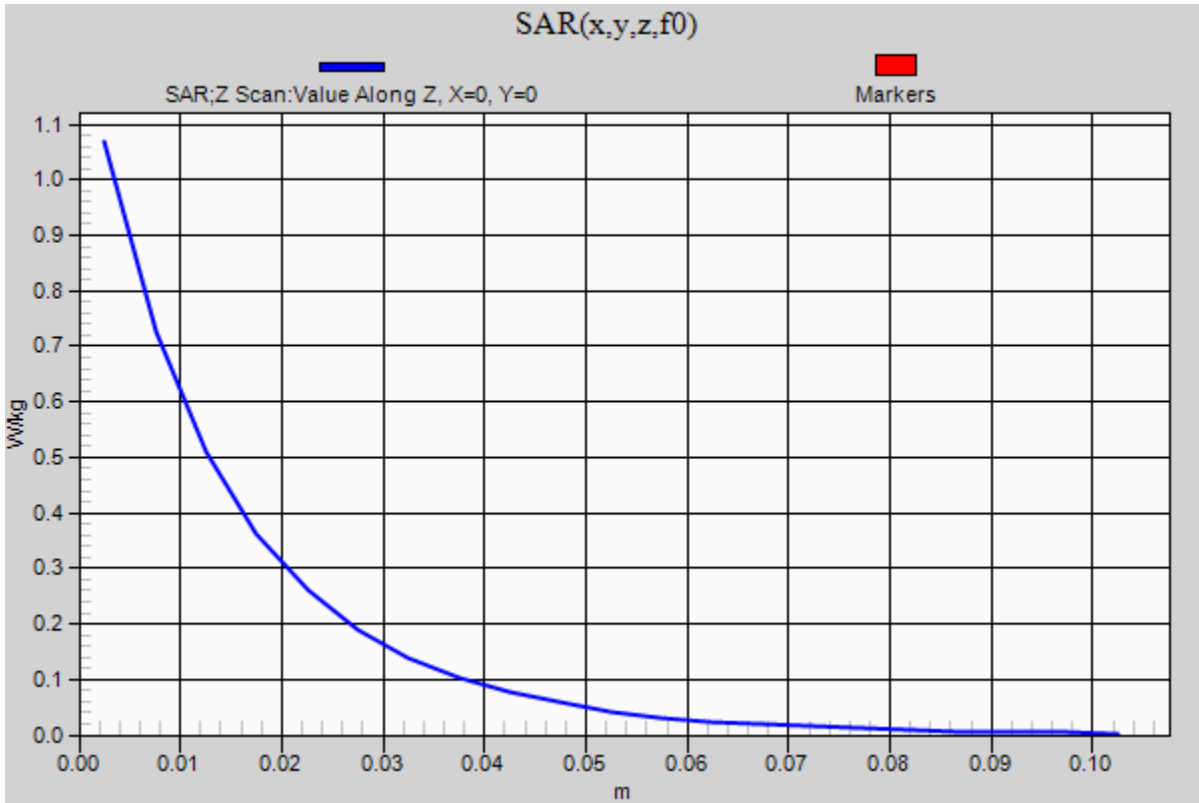


0 dB = 1.08 W/kg = 0.33 dBW/kg

### 20170117\_SystemPerformanceCheck-D750V3 SN 1019

Frequency: 750 MHz; Duty Cycle: 1:1

**Body/Pin=100 mW/Z Scan (1x1x21):** Measurement grid: dx=20mm, dy=20mm, dz=5mm  
Maximum value of SAR (measured) = 1.07 W/kg



## 20170123\_SystemPerformanceCheck-D2600V2 SN 1006

Frequency: 2600 MHz; Duty Cycle: 1:1; Room Ambient Temperature: 24.0°C; Liquid Temperature: 23.0°C

Medium parameters used:  $f = 2600$  MHz;  $\sigma = 2.208$  S/m;  $\epsilon_r = 50.591$ ;  $\rho = 1000$  kg/m<sup>3</sup>

DASY5 Configuration:

- Area Scan Setting: Find Secondary Maximum Within: 2.0 dB and with a peak SAR value greater than 0.0012W/kg
- Electronics: DAE4 Sn1257; Calibrated: 9/15/2016
- Probe: EX3DV4 - SN3991; ConvF(7.22, 7.22, 7.22); Calibrated: 5/12/2016;
- Sensor-Surface: 2.5mm (Mechanical Surface Detection)
- Phantom: ELI v5.0 (B); Type: QDOVA001BB; Serial: 1118

**Body/Pin=100 mW/Area Scan (8x8x1):** Measurement grid: dx=12mm, dy=12mm

Maximum value of SAR (measured) = 6.56 W/kg

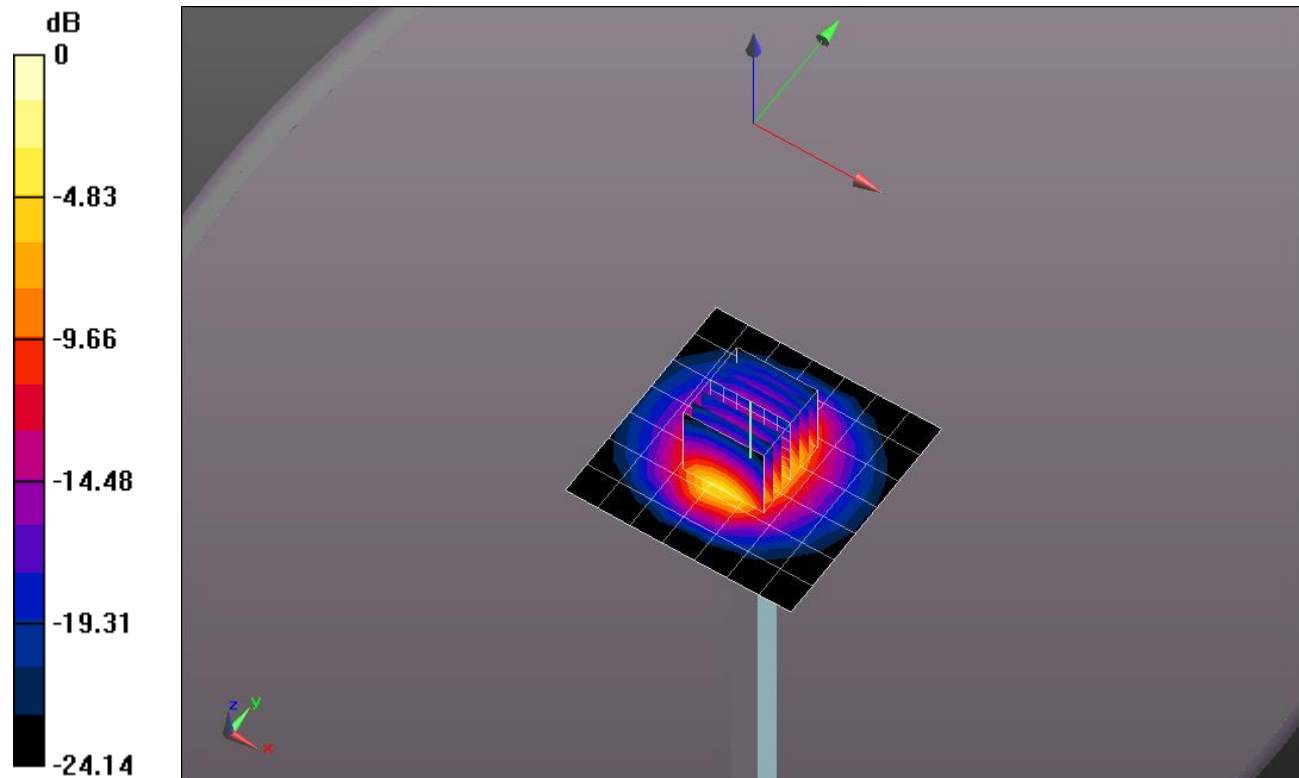
**Body/Pin=100 mW/Zoom Scan (7x7x7)/Cube 0:** Measurement grid: dx=5mm, dy=5mm, dz=5mm

Reference Value = 62.778 V/m; Power Drift = 0.04 dB

Peak SAR (extrapolated) = 13.0 W/kg

**SAR(1 g) = 5.9 W/kg; SAR(10 g) = 2.57 W/kg**

Maximum value of SAR (measured) = 8.64 W/kg

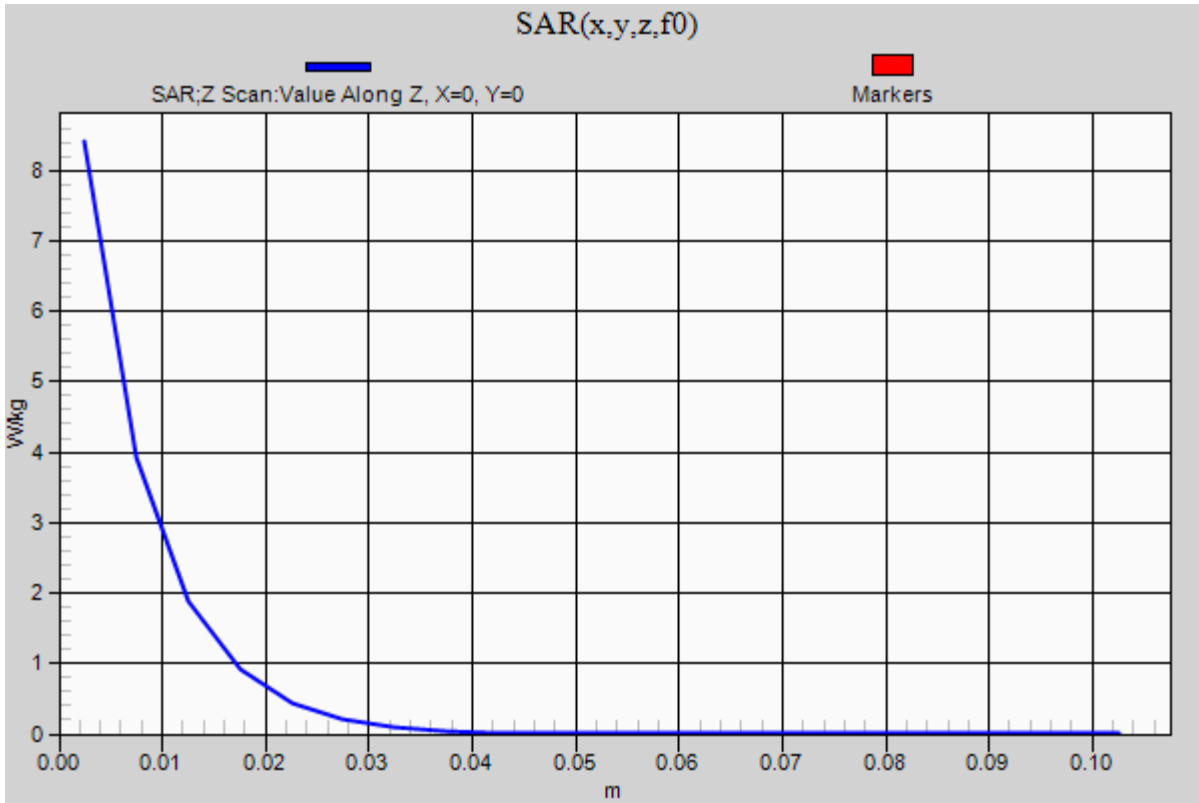


0 dB = 8.64 W/kg = 9.37 dBW/kg

### 20170123\_SystemPerformanceCheck-D2600V2 SN 1006

Frequency: 2600 MHz; Duty Cycle: 1:1

**Body/Pin=100 mW/Z Scan (1x1x21):** Measurement grid: dx=20mm, dy=20mm, dz=5mm  
Maximum value of SAR (measured) = 8.41 W/kg



## 20170126\_SystemPerformanceCheck-D1900V2 SN 5d140

Frequency: 1900 MHz; Duty Cycle: 1:1; Room Ambient Temperature: 24.0°C; Liquid Temperature: 23.0°C

Medium parameters used:  $f = 1900$  MHz;  $\sigma = 1.546$  S/m;  $\epsilon_r = 51.251$ ;  $\rho = 1000$  kg/m<sup>3</sup>

DASY5 Configuration:

- Area Scan Setting: Find Secondary Maximum Within: 2.0 dB and with a peak SAR value greater than 0.0012W/kg
- Electronics: DAE3 Sn500; Calibrated: 5/19/2016
- Probe: EX3DV4 - SN3902; ConvF(7.89, 7.89, 7.89); Calibrated: 5/17/2016;
- Sensor-Surface: 2.5mm (Mechanical Surface Detection)
- Phantom: ELI v5.0 (A); Type: QDOVA001BB; Serial: 1120

**Body/Pin=100 mW/Area Scan (7x7x1):** Measurement grid: dx=15mm, dy=15mm

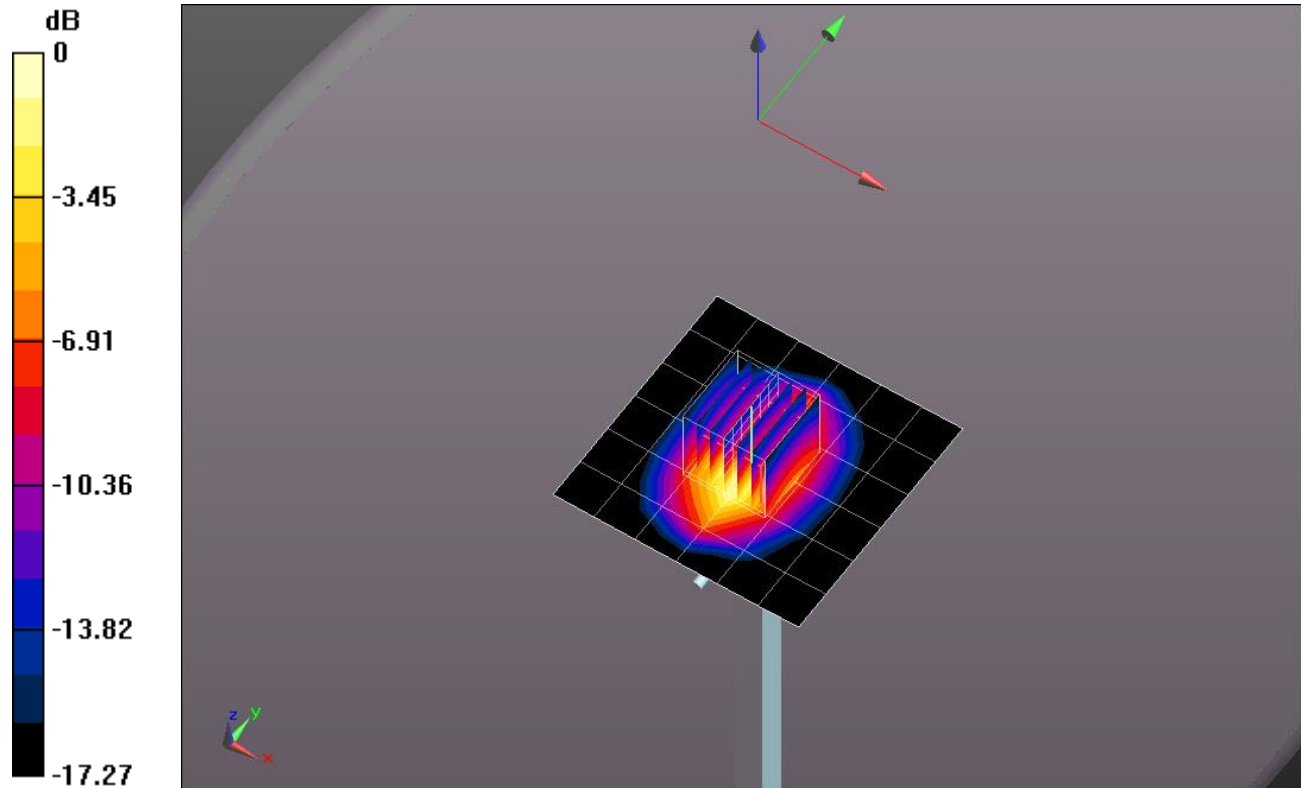
Maximum value of SAR (measured) = 5.16 W/kg

**Body/Pin=100 mW/Zoom Scan (7x7x7)/Cube 0:** Measurement grid: dx=5mm, dy=5mm, dz=5mm

Reference Value = 58.255 V/m; Power Drift = 0.00 dB

Peak SAR (extrapolated) = 6.99 W/kg

**SAR(1 g) = 3.8 W/kg; SAR(10 g) = 1.97 W/kg**

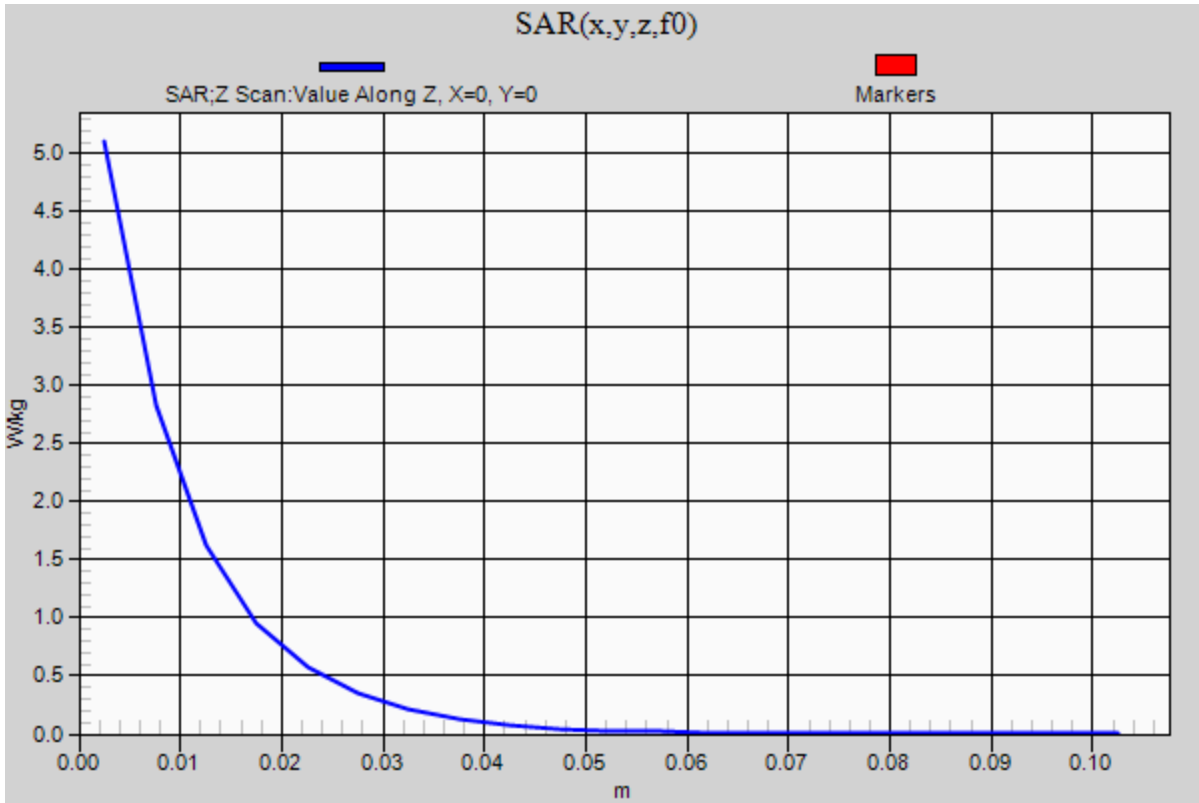


0 dB = 5.16 W/kg = 7.13 dBW/kg

### 20170126\_SystemPerformanceCheck-D1900V2 SN 5d140

Frequency: 1900 MHz; Duty Cycle: 1:1

**Body/Pin=100 mW/Z Scan (1x1x21):** Measurement grid: dx=20mm, dy=20mm, dz=5mm  
Maximum value of SAR (measured) = 5.11 W/kg



## 20170109\_SystemPerformanceCheck-D2450V2 SN 899

Frequency: 2450 MHz; Duty Cycle: 1:1; Room Ambient Temperature: 24.0°C; Liquid Temperature: 23.0°C

Medium parameters used:  $f = 2450 \text{ MHz}$ ;  $\sigma = 1.918 \text{ S/m}$ ;  $\epsilon_r = 52.44$ ;  $\rho = 1000 \text{ kg/m}^3$

DASY5 Configuration:

- Area Scan Setting: Find Secondary Maximum Within: 2.0 dB and with a peak SAR value greater than 0.0012W/kg
- Electronics: DAE4 Sn1433; Calibrated: 3/17/2016
- Probe: EX3DV4 - SN3936; ConvF(7.3, 7.3, 7.3); Calibrated: 7/26/2016;
- Sensor-Surface: 2.5mm (Mechanical Surface Detection)
- Phantom: ELI v5.0 (A); Type: QDOVA001BB; Serial: 1117

**Body/Pin=100 mW/Area Scan (8x8x1):** Measurement grid: dx=12mm, dy=12mm

Maximum value of SAR (measured) = 5.16 W/kg

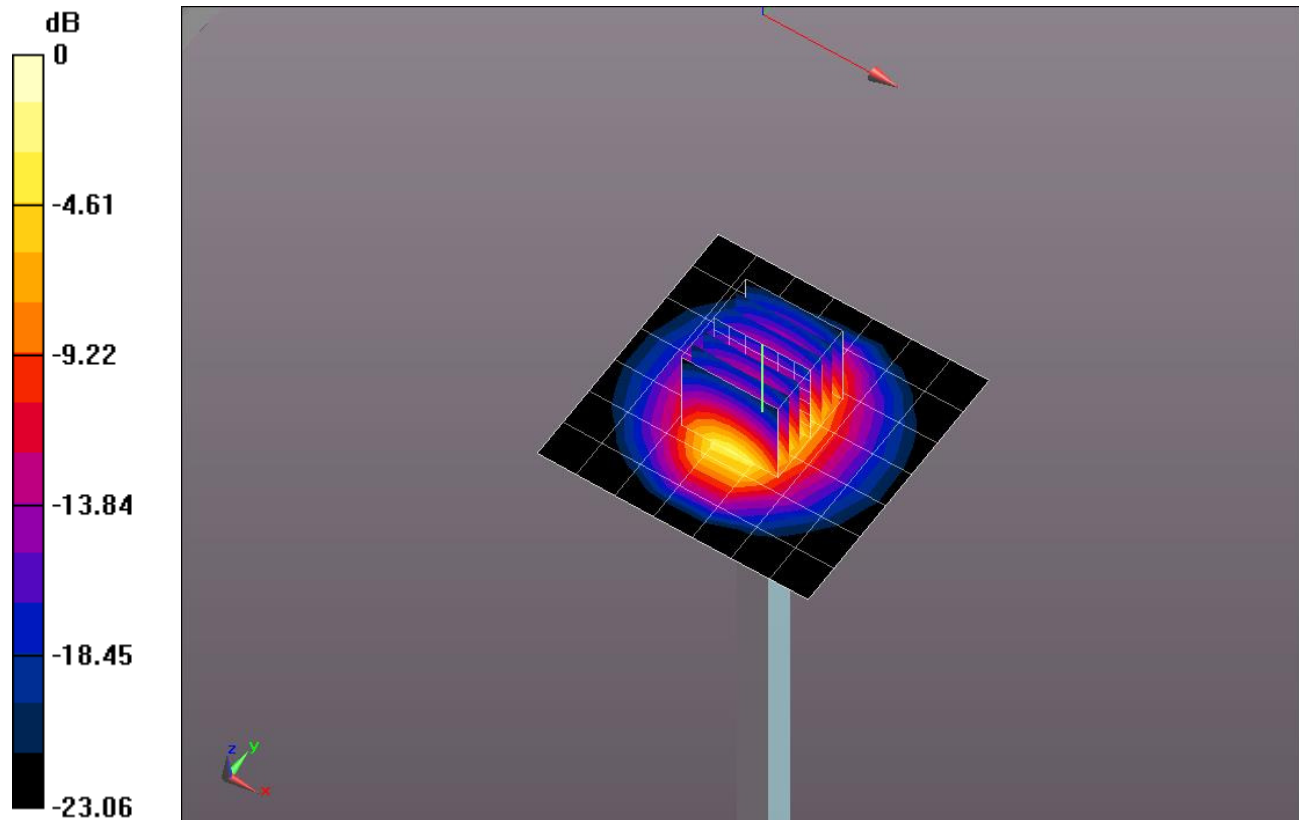
**Body/Pin=100 mW/Zoom Scan (7x7x7)/Cube 0:** Measurement grid: dx=5mm, dy=5mm, dz=5mm

Reference Value = 61.64 V/m; Power Drift = -0.09 dB

Peak SAR (extrapolated) = 10.4 W/kg

**SAR(1 g) = 4.93 W/kg; SAR(10 g) = 2.24 W/kg**

Maximum value of SAR (measured) = 7.06 W/kg

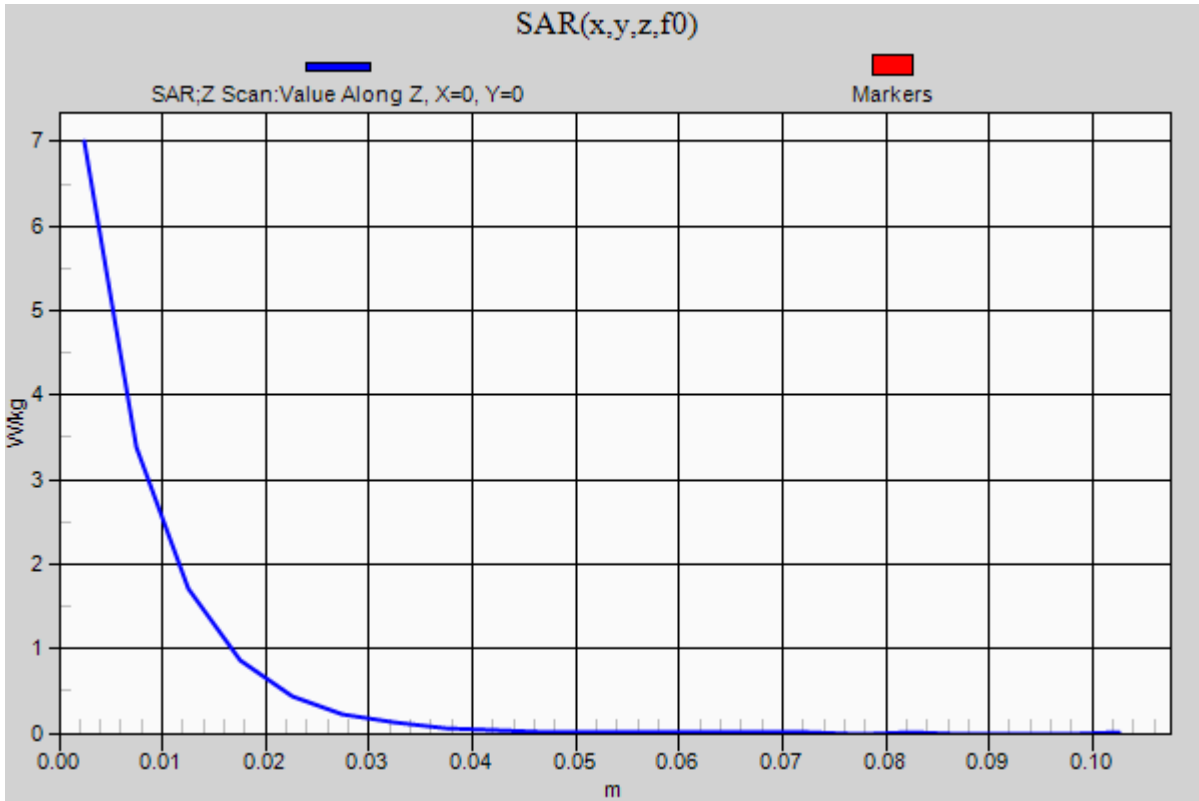


0 dB = 7.06 W/kg = 8.49 dBW/kg

### 20170109\_SystemPerformanceCheck-D2450V2 SN 899

Frequency: 2450 MHz; Duty Cycle: 1:1

**Body/Pin=100 mW/Z Scan (1x1x21):** Measurement grid: dx=20mm, dy=20mm, dz=5mm  
Maximum value of SAR (measured) = 7.00 W/kg



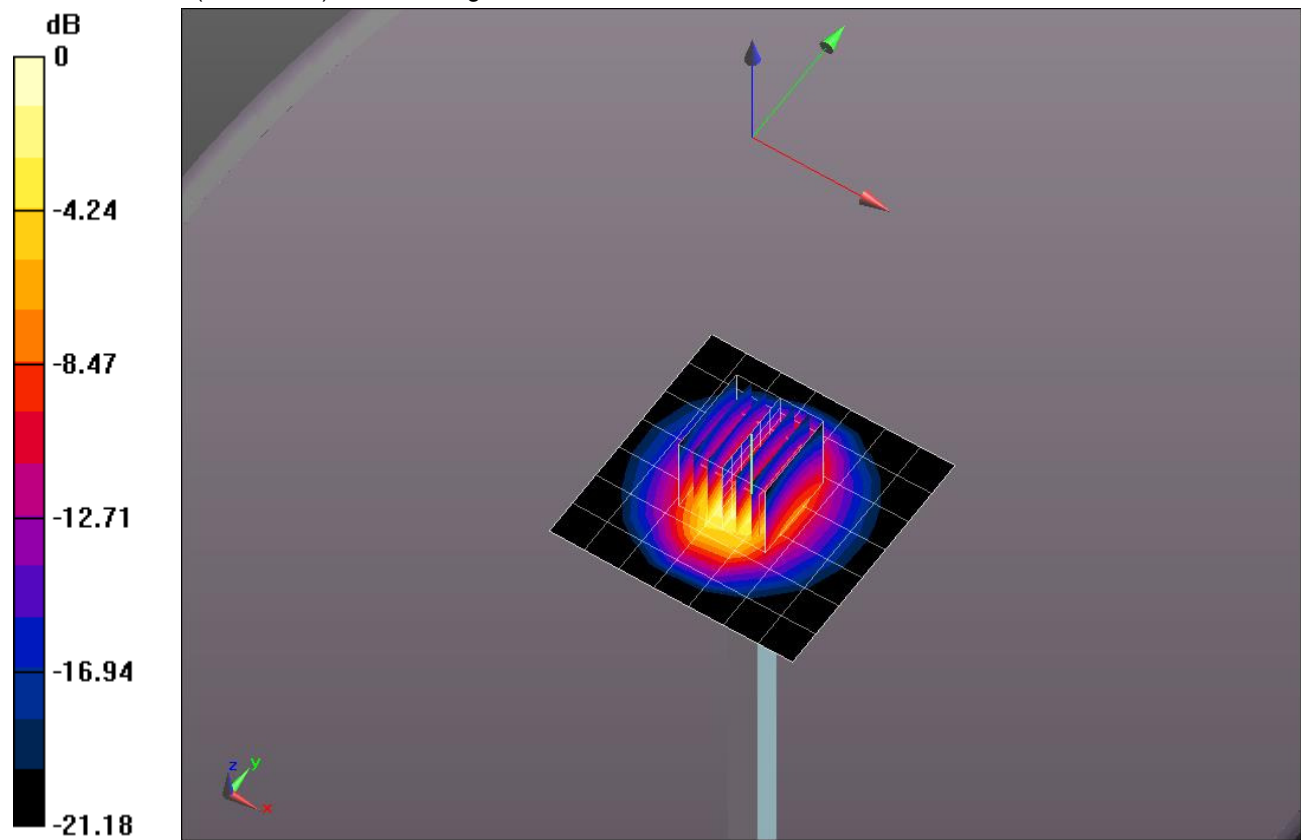
## 20170117\_SystemPerformanceCheck-D2300V2 SN 1002

Frequency: 2300 MHz; Duty Cycle: 1:1; Room Ambient Temperature: 24.0°C; Liquid Temperature: 23.0°C  
 Medium parameters used:  $f = 2300 \text{ MHz}$ ;  $\sigma = 1.783 \text{ S/m}$ ;  $\epsilon_r = 52.09$ ;  $\rho = 1000 \text{ kg/m}^3$   
 DASY5 Configuration:

- Area Scan Setting: Find Secondary Maximum Within: 2.0 dB and with a peak SAR value greater than 0.0012W/kg
- Electronics: DAE4 Sn1433; Calibrated: 3/17/2016
- Probe: EX3DV4 - SN3936; ConvF(7.49, 7.49, 7.49); Calibrated: 7/26/2016;
- Sensor-Surface: 2.5mm (Mechanical Surface Detection)
- Phantom: ELI v5.0 (A); Type: QDOVA001BB; Serial: 1117

**Body/Pin=100 mW/Area Scan (8x8x1):** Measurement grid: dx=12mm, dy=12mm  
 Maximum value of SAR (measured) = 5.31 W/kg

**Body/Pin=100 mW/Zoom Scan (7x7x7)/Cube 0:** Measurement grid: dx=5mm, dy=5mm, dz=5mm  
 Reference Value = 60.23 V/m; Power Drift = 0.05 dB  
 Peak SAR (extrapolated) = 9.34 W/kg  
**SAR(1 g) = 4.62 W/kg; SAR(10 g) = 2.17 W/kg**  
 Maximum value of SAR (measured) = 6.52 W/kg

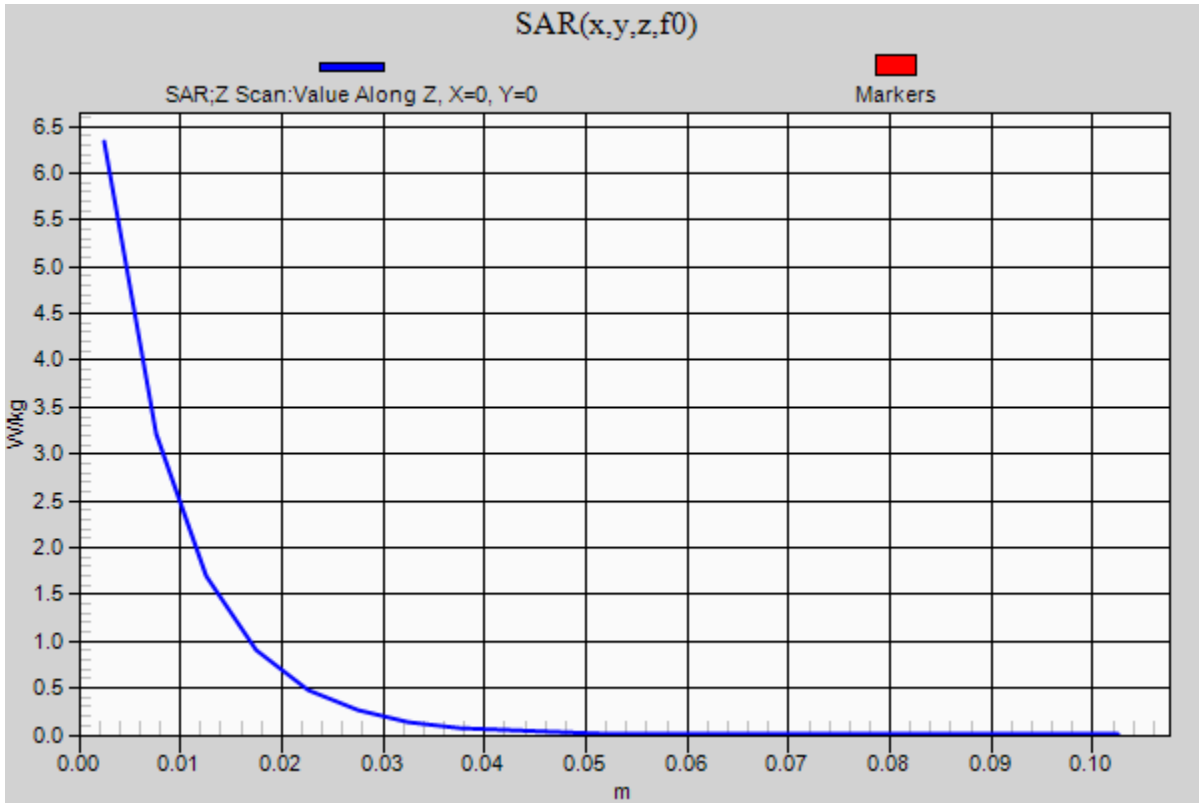


0 dB = 6.52 W/kg = 8.14 dBW/kg

### 20170117\_SystemPerformanceCheck-D2300V2 SN 1002

Frequency: 2300 MHz; Duty Cycle: 1:1

**Body/Pin=100 mW/Z Scan (1x1x21):** Measurement grid: dx=20mm, dy=20mm, dz=5mm  
Maximum value of SAR (measured) = 6.33 W/kg



## 20170117\_SystemPerformanceCheck-D2600V2 SN 1006

Frequency: 2600 MHz; Duty Cycle: 1:1; Room Ambient Temperature: 24.0°C; Liquid Temperature: 23.0°C

Medium parameters used:  $f = 2600$  MHz;  $\sigma = 2.254$  S/m;  $\epsilon_r = 50.56$ ;  $\rho = 1000$  kg/m<sup>3</sup>

DASY5 Configuration:

- Area Scan Setting: Find Secondary Maximum Within: 2.0 dB and with a peak SAR value greater than 0.0012W/kg
- Electronics: DAE4 Sn1433; Calibrated: 3/17/2016
- Probe: EX3DV4 - SN3936; ConvF(7.07, 7.07, 7.07); Calibrated: 7/26/2016;
- Sensor-Surface: 2.5mm (Mechanical Surface Detection)
- Phantom: ELI v5.0 (A); Type: QDOVA001BB; Serial: 1117

**Body/Pin=100 mW/Area Scan (8x8x1):** Measurement grid: dx=12mm, dy=12mm

Maximum value of SAR (measured) = 5.91 W/kg

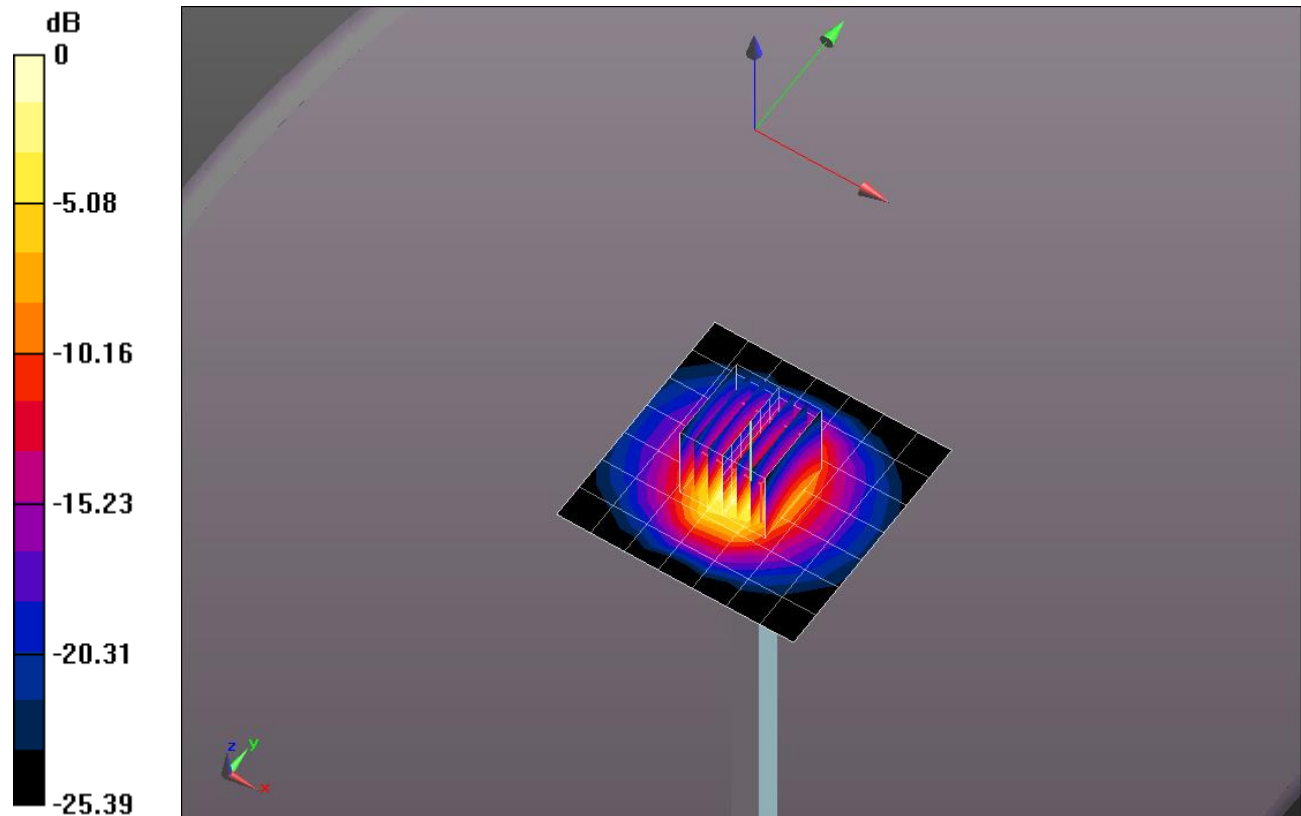
**Body/Pin=100 mW/Zoom Scan (7x7x7)/Cube 0:** Measurement grid: dx=5mm, dy=5mm, dz=5mm

Reference Value = 59.91 V/m; Power Drift = 0.04 dB

Peak SAR (extrapolated) = 12.6 W/kg

**SAR(1 g) = 5.53 W/kg; SAR(10 g) = 2.36 W/kg**

Maximum value of SAR (measured) = 8.18 W/kg

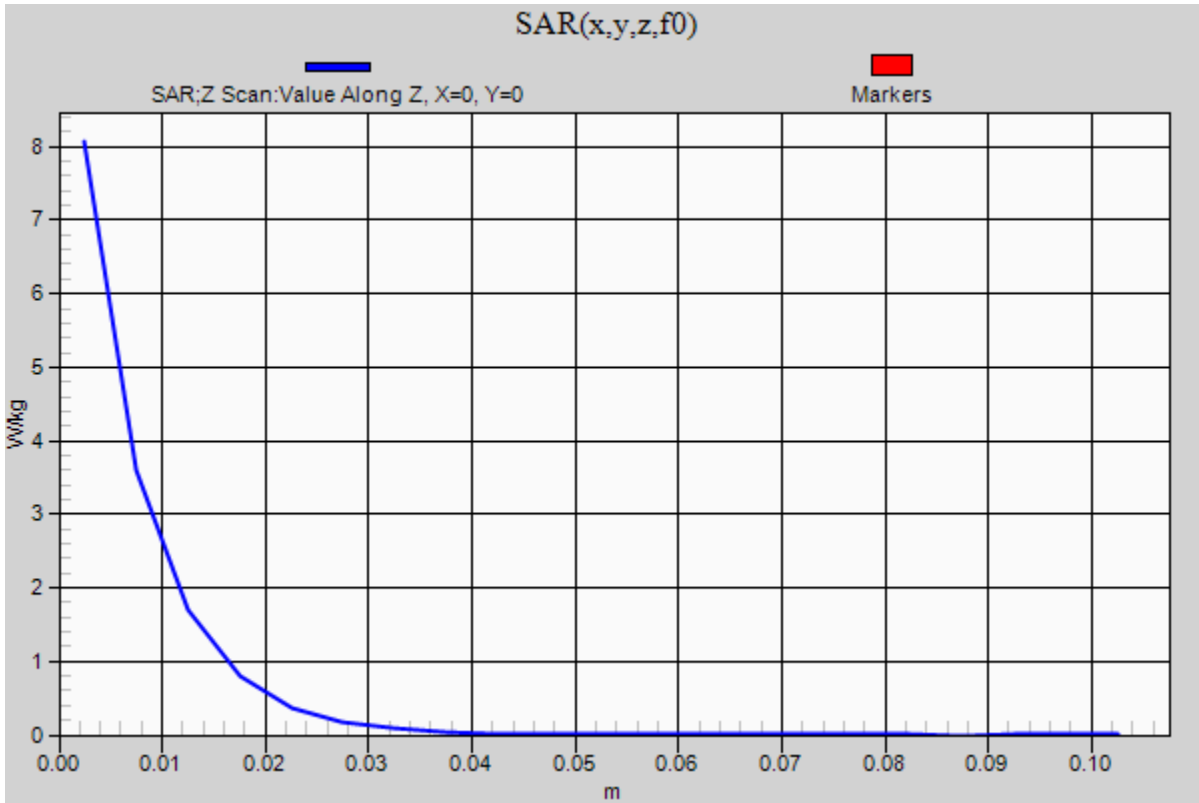


0 dB = 8.18 W/kg = 9.13 dBW/kg

### 20170117\_SystemPerformanceCheck-D2600V2 SN 1006

Frequency: 2600 MHz; Duty Cycle: 1:1

**Body/Pin=100 mW/Z Scan (1x1x21):** Measurement grid: dx=20mm, dy=20mm, dz=5mm  
Maximum value of SAR (measured) = 8.07 W/kg



## 20170221\_SystemPerformanceCheck-D2600V2 SN 1036

Frequency: 2600 MHz; Duty Cycle: 1:1; Room Ambient Temperature: 24.0°C; Liquid Temperature: 23.0°C

Medium parameters used:  $f = 2600$  MHz;  $\sigma = 2.214$  S/m;  $\epsilon_r = 52.786$ ;  $\rho = 1000$  kg/m<sup>3</sup>

DASY5 Configuration:

- Area Scan Setting: Find Secondary Maximum Within: 2.0 dB and with a peak SAR value greater than 0.0012W/kg
- Electronics: DAE4 Sn1433; Calibrated: 3/17/2016
- Probe: EX3DV4 - SN3936; ConvF(7.07, 7.07, 7.07); Calibrated: 7/26/2016;
- Sensor-Surface: 2.5mm (Mechanical Surface Detection)
- Phantom: ELI v5.0 (A); Type: QDOVA001BB; Serial: 1117

**Body/Pin=100 mW/Area Scan (8x8x1):** Measurement grid: dx=12mm, dy=12mm

Maximum value of SAR (measured) = 5.76 W/kg

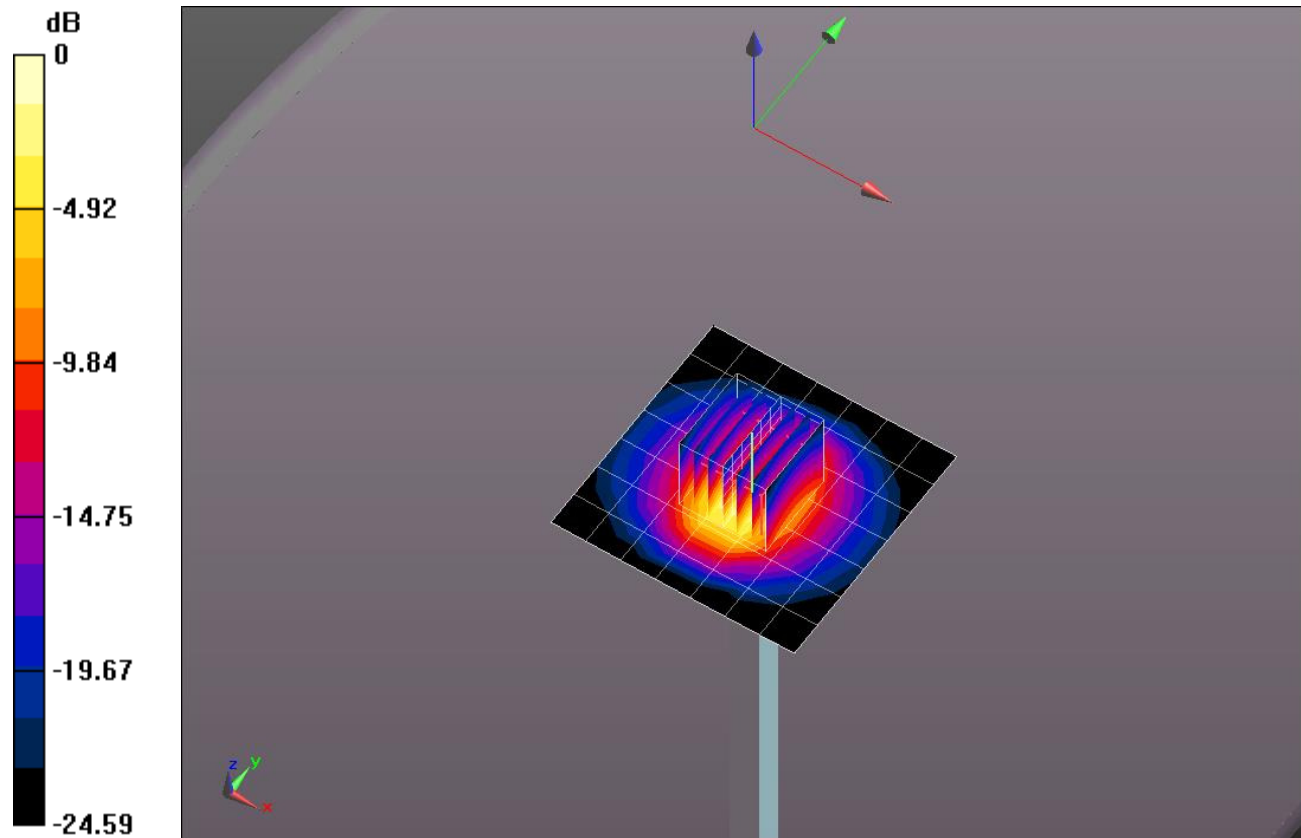
**Body/Pin=100 mW/Zoom Scan (7x7x7)/Cube 0:** Measurement grid: dx=5mm, dy=5mm, dz=5mm

Reference Value = 61.94 V/m; Power Drift = 0.03 dB

Peak SAR (extrapolated) = 12.7 W/kg

**SAR(1 g) = 5.76 W/kg; SAR(10 g) = 2.5 W/kg**

Maximum value of SAR (measured) = 8.42 W/kg

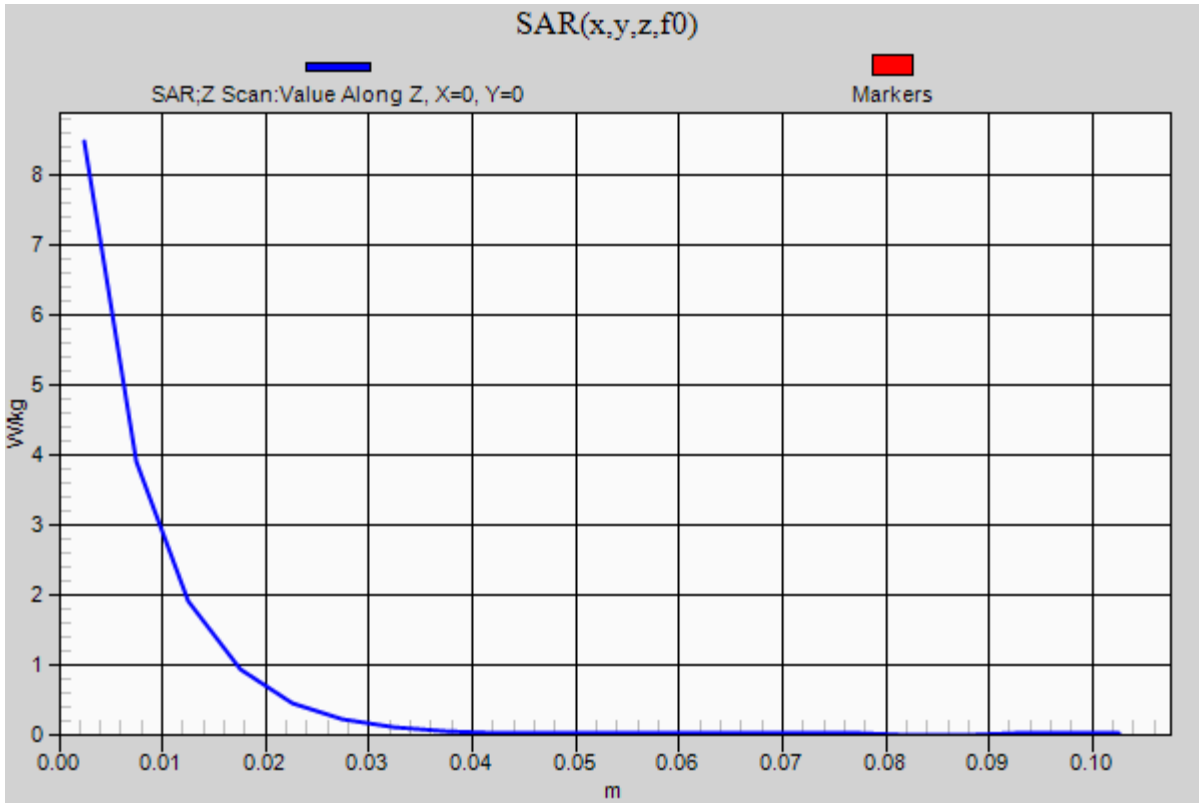


0 dB = 8.42 W/kg = 9.25 dBW/kg

### 20170221\_SystemPerformanceCheck-D2600V2 SN 1036

Frequency: 2600 MHz; Duty Cycle: 1:1

**Body/Pin=100 mW/Z Scan (1x1x21):** Measurement grid: dx=20mm, dy=20mm, dz=5mm  
Maximum value of SAR (measured) = 8.47 W/kg



## 20161227\_SystemPerformanceCheck-D5GHzV2 SN 1138

Frequency: 5800 MHz; Duty Cycle: 1:1; Room Ambient Temperature: 24.0°C; Liquid Temperature: 23.0°C

Medium parameters used:  $f = 5800 \text{ MHz}$ ;  $\sigma = 6.056 \text{ S/m}$ ;  $\epsilon_r = 49.078$ ;  $\rho = 1000 \text{ kg/m}^3$

DASY5 Configuration:

- Area Scan Setting: Find Secondary Maximum Within: 2.0 dB and with a peak SAR value greater than 0.0012W/kg
- Electronics: DAE4 Sn1472; Calibrated: 3/24/2016
- Probe: EX3DV4 - SN7335; ConvF(3.93, 3.93, 3.93); Calibrated: 3/22/2016;
- Sensor-Surface: 1.4mm (Mechanical Surface Detection)
- Phantom: ELI v5.0 A; Type: SM 000 T01 DA; Serial: TP:1247

**Body/5.8 GHz, Pin=100mW/Area Scan (7x7x1):** Measurement grid: dx=10mm, dy=10mm

Maximum value of SAR (measured) = 18.6 W/kg

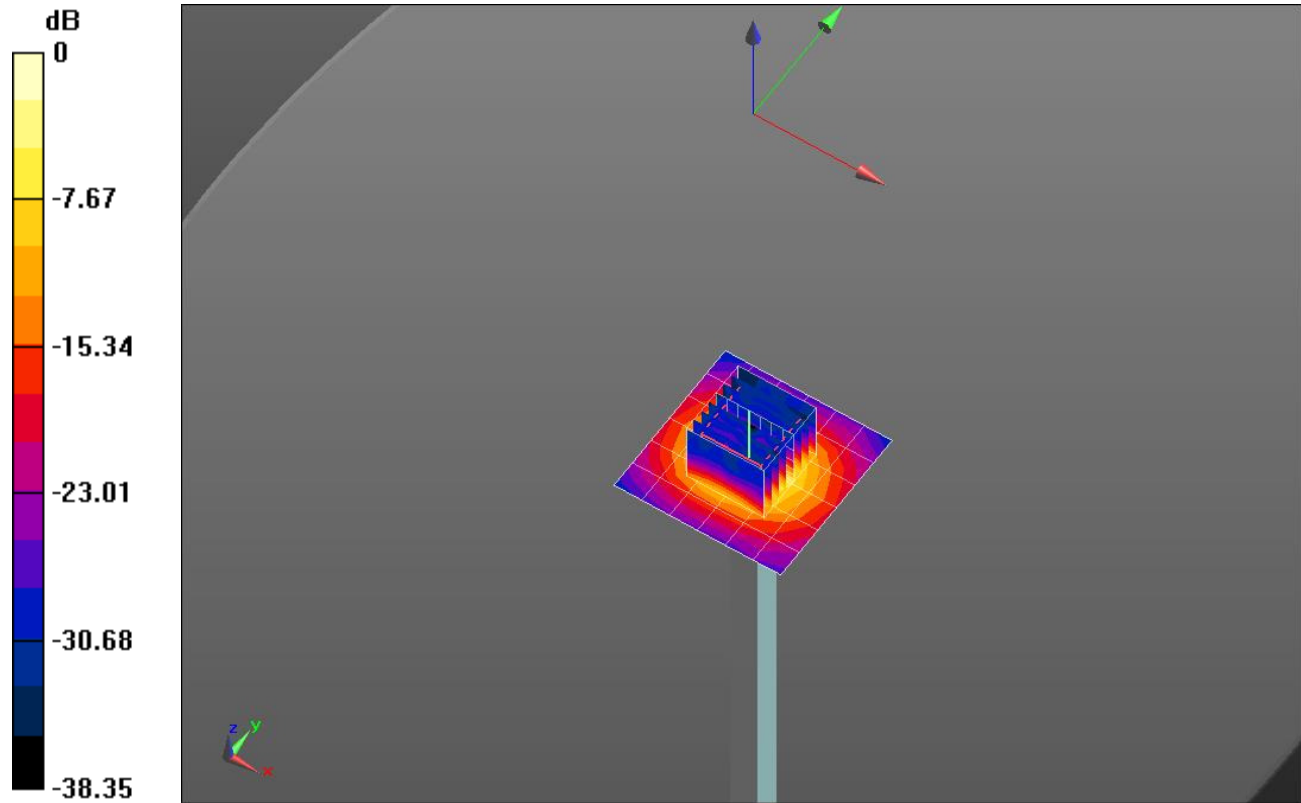
**Body/5.8 GHz, Pin=100mW/Zoom Scan (8x8x7)/Cube 0:** Measurement grid: dx=4mm, dy=4mm, dz=1.4mm

Reference Value = 50.418 V/m; Power Drift = -0.08 dB

Peak SAR (extrapolated) = 31.5 W/kg

**SAR(1 g) = 7.04 W/kg; SAR(10 g) = 1.96 W/kg**

Maximum value of SAR (measured) = 17.2 W/kg

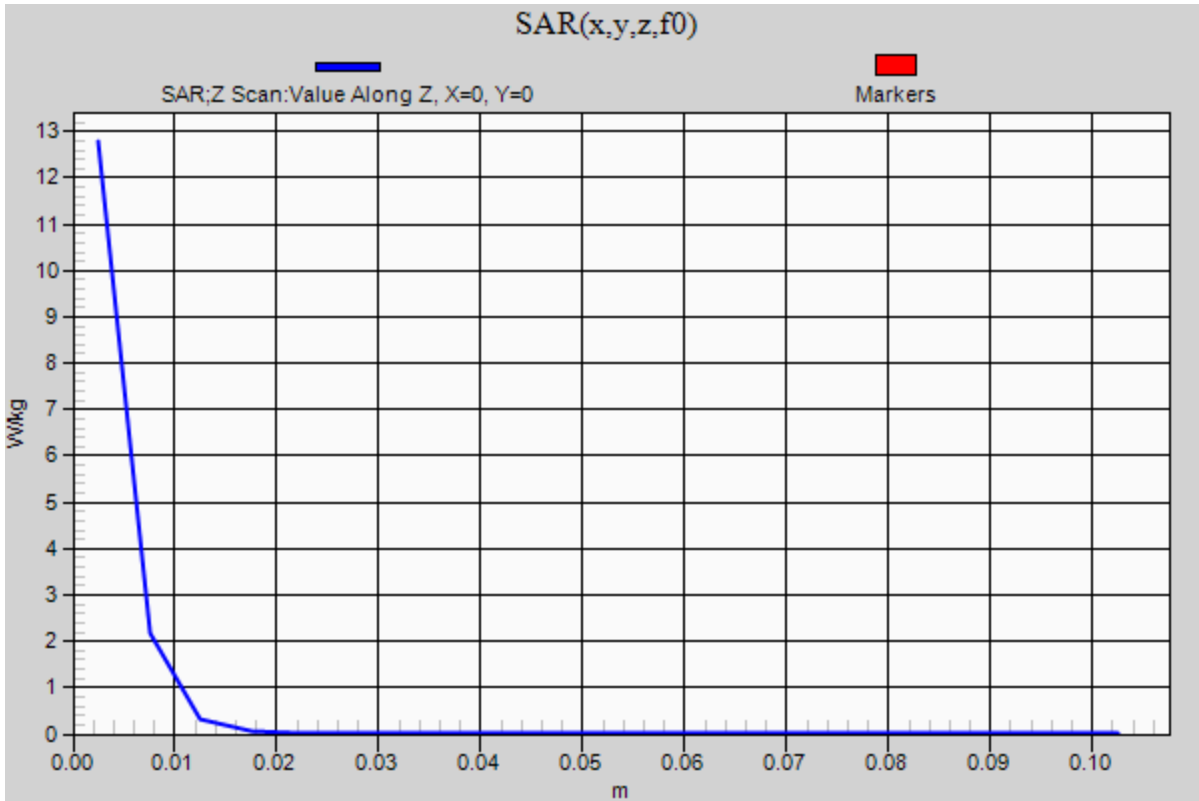


0 dB = 17.2 W/kg = 12.36 dBW/kg

### 20161227\_SystemPerformanceCheck-D5GHzV2 SN 1138

Frequency: 5800 MHz; Duty Cycle: 1:1

**Body/5.8 GHz, Pin=100mW/Z Scan (1x1x21):** Measurement grid: dx=20mm, dy=20mm, dz=5mm  
Maximum value of SAR (measured) = 12.8 W/kg



## 20170123\_SystemPerformanceCheck-D835V2 SN 4d142

Frequency: 835 MHz; Duty Cycle: 1:1; Room Ambient Temperature: 24.0°C; Liquid Temperature: 23.0°C

Medium parameters used:  $f = 835 \text{ MHz}$ ;  $\sigma = 0.988 \text{ S/m}$ ;  $\epsilon_r = 53.75$ ;  $\rho = 1000 \text{ kg/m}^3$

DASY5 Configuration:

- Area Scan Setting: Find Secondary Maximum Within: 2.0 dB and with a peak SAR value greater than 0.0012W/kg
- Electronics: DAE4 Sn1472; Calibrated: 3/24/2016
- Probe: EX3DV4 - SN7335; ConvF(9.75, 9.75, 9.75); Calibrated: 3/22/2016;
- Sensor-Surface: 2.5mm (Mechanical Surface Detection)
- Phantom: ELI v5.0 A; Type: SM 000 T01 DA; Serial: TP:1247

**Body/Pin=100 mW/Area Scan (7x7x1):** Measurement grid: dx=15mm, dy=15mm

Maximum value of SAR (measured) = 1.23 W/kg

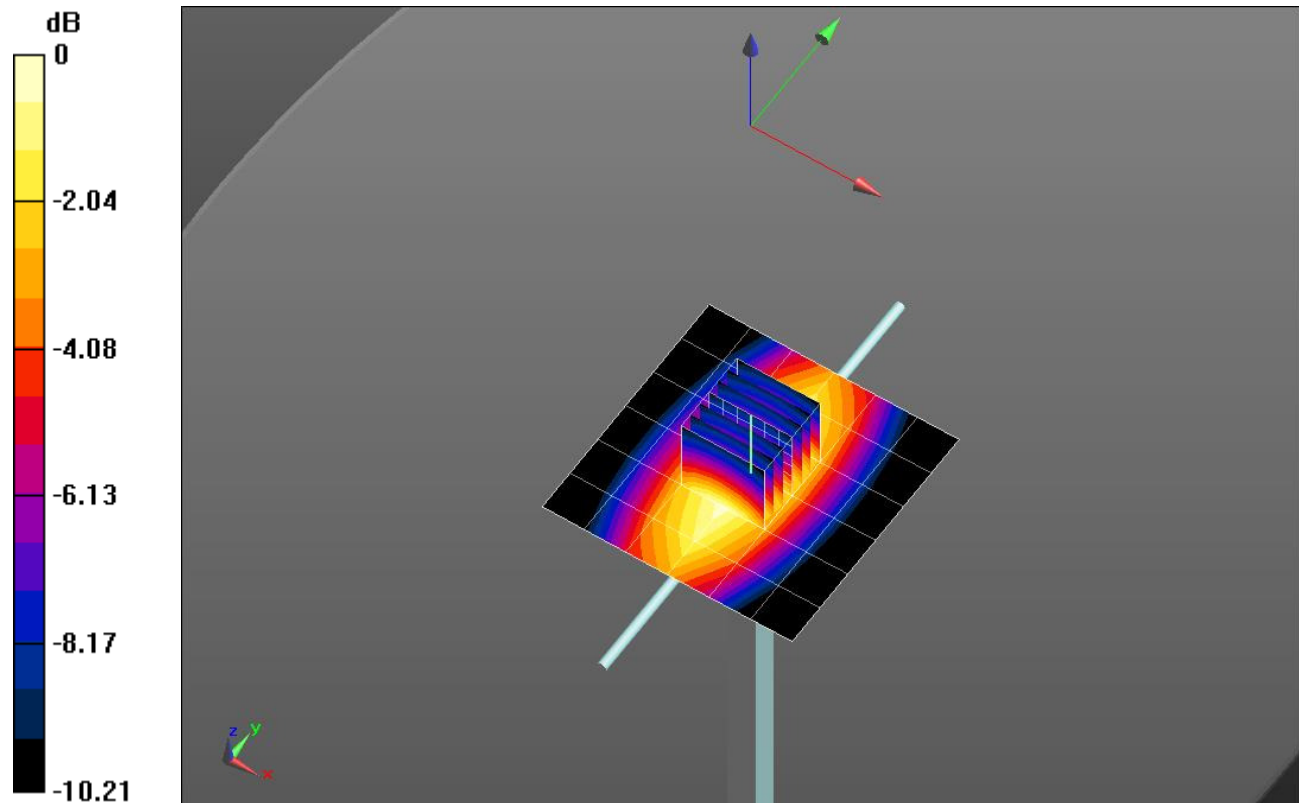
**Body/Pin=100 mW/Zoom Scan (7x7x7)/Cube 0:** Measurement grid: dx=5mm, dy=5mm, dz=5mm

Reference Value = 35.584 V/m; Power Drift = 0.01 dB

Peak SAR (extrapolated) = 1.49 W/kg

**SAR(1 g) = 1.01 W/kg; SAR(10 g) = 0.666 W/kg**

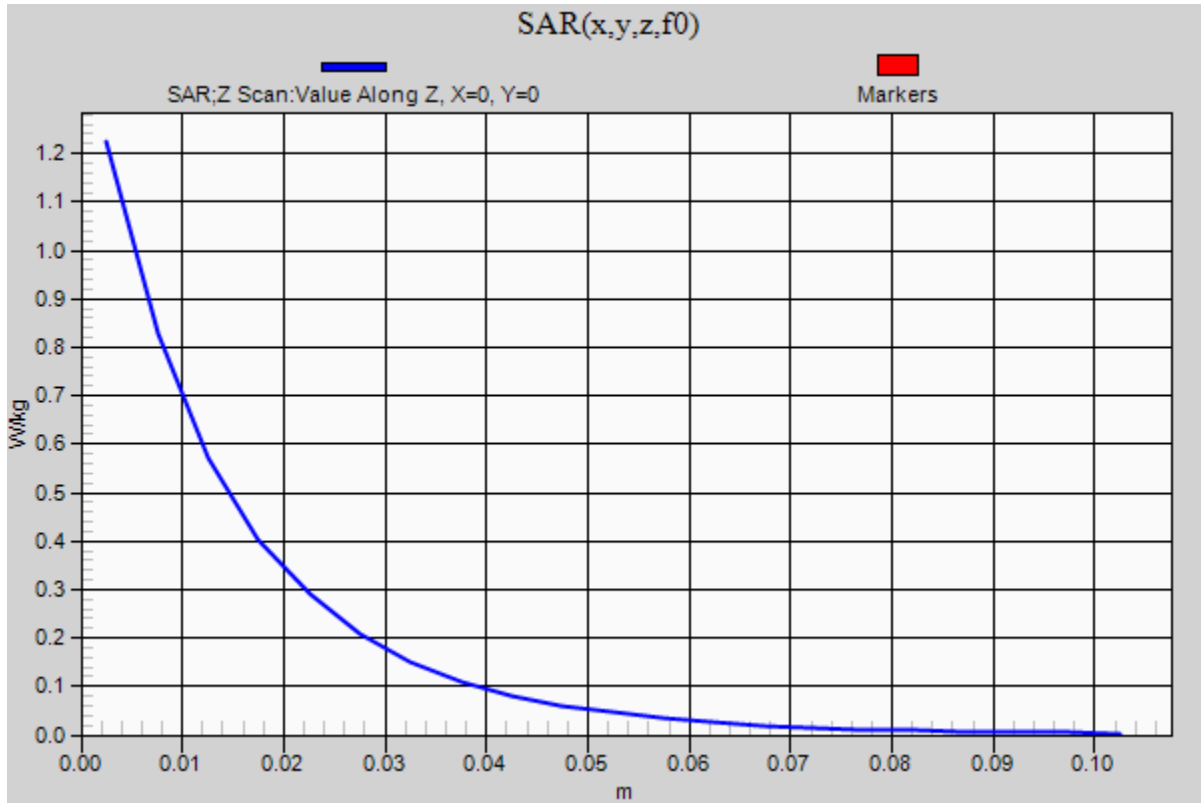
Maximum value of SAR (measured) = 1.22 W/kg



### 20170123\_SystemPerformanceCheck-D835V2 SN 4d142

Frequency: 835 MHz; Duty Cycle: 1:1

**Body/Pin=100 mW/Z Scan (1x1x21):** Measurement grid: dx=20mm, dy=20mm, dz=5mm  
Maximum value of SAR (measured) = 1.22 W/kg



## 20160117\_SystemPerformanceCheck-D1900V2 SN 5d043

Frequency: 1900 MHz; Duty Cycle: 1:1; Room Ambient Temperature: 24.0°C; Liquid Temperature: 23.0°C

Medium parameters used:  $f = 1900$  MHz;  $\sigma = 1.576$  S/m;  $\epsilon_r = 50.738$ ;  $\rho = 1000$  kg/m<sup>3</sup>

DASY5 Configuration:

- Area Scan Setting: Find Secondary Maximum Within: 2.0 dB and with a peak SAR value greater than 0.0012W/kg
- Electronics: DAE4 Sn1377; Calibrated: 9/14/2016
- Probe: EX3DV4 - SN3686; ConvF(7.46, 7.46, 7.46); Calibrated: 8/25/2016;
- Sensor-Surface: 2.5mm (Mechanical Surface Detection)
- Phantom: ELI v5.0 (B); Type: QDOVA001BB; Serial: 1118

**Body/Pin=100 mW/Area Scan (7x7x1):** Measurement grid: dx=15mm, dy=15mm

Maximum value of SAR (measured) = 5.38 W/kg

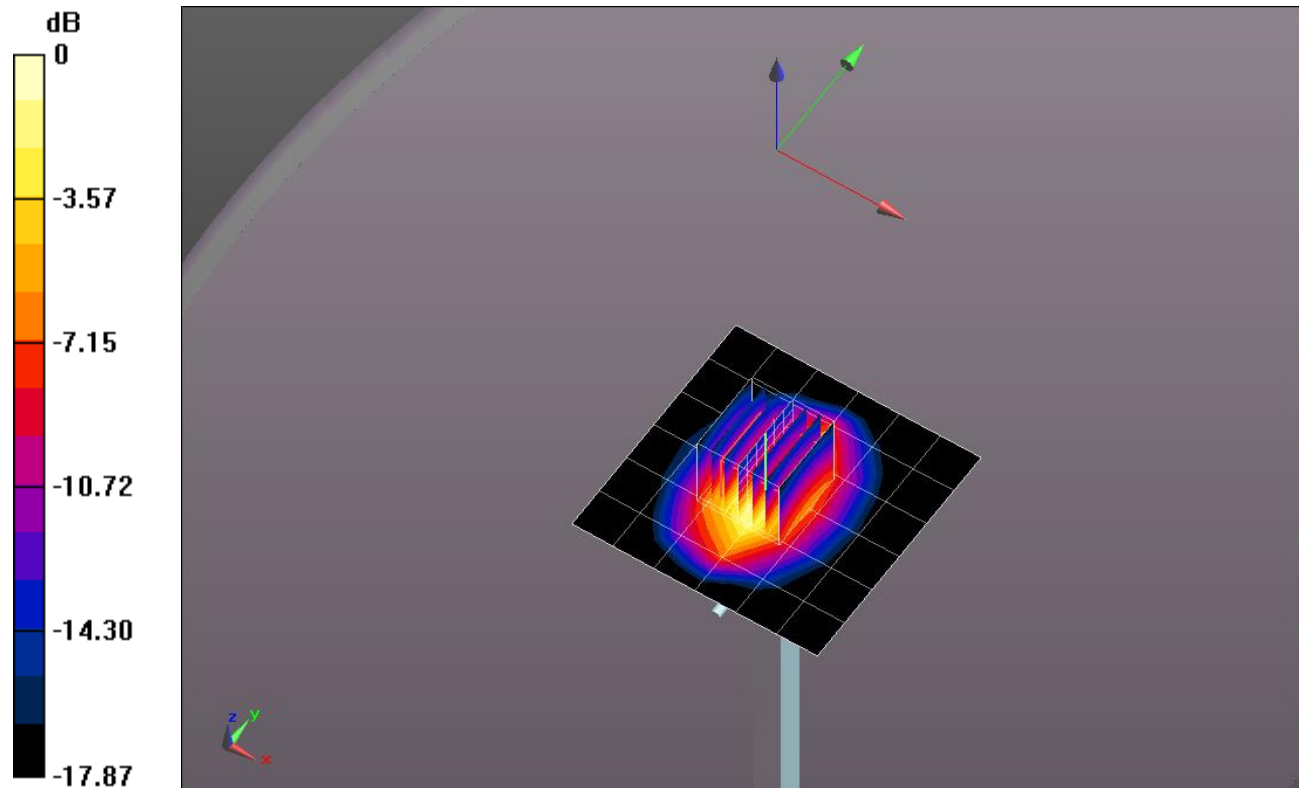
**Body/Pin=100 mW/Zoom Scan (7x7x7)/Cube 0:** Measurement grid: dx=5mm, dy=5mm, dz=5mm

Reference Value = 58.614 V/m; Power Drift = 0.12 dB

Peak SAR (extrapolated) = 7.70 W/kg

**SAR(1 g) = 4.11 W/kg; SAR(10 g) = 2.11 W/kg**

Maximum value of SAR (measured) = 5.59 W/kg

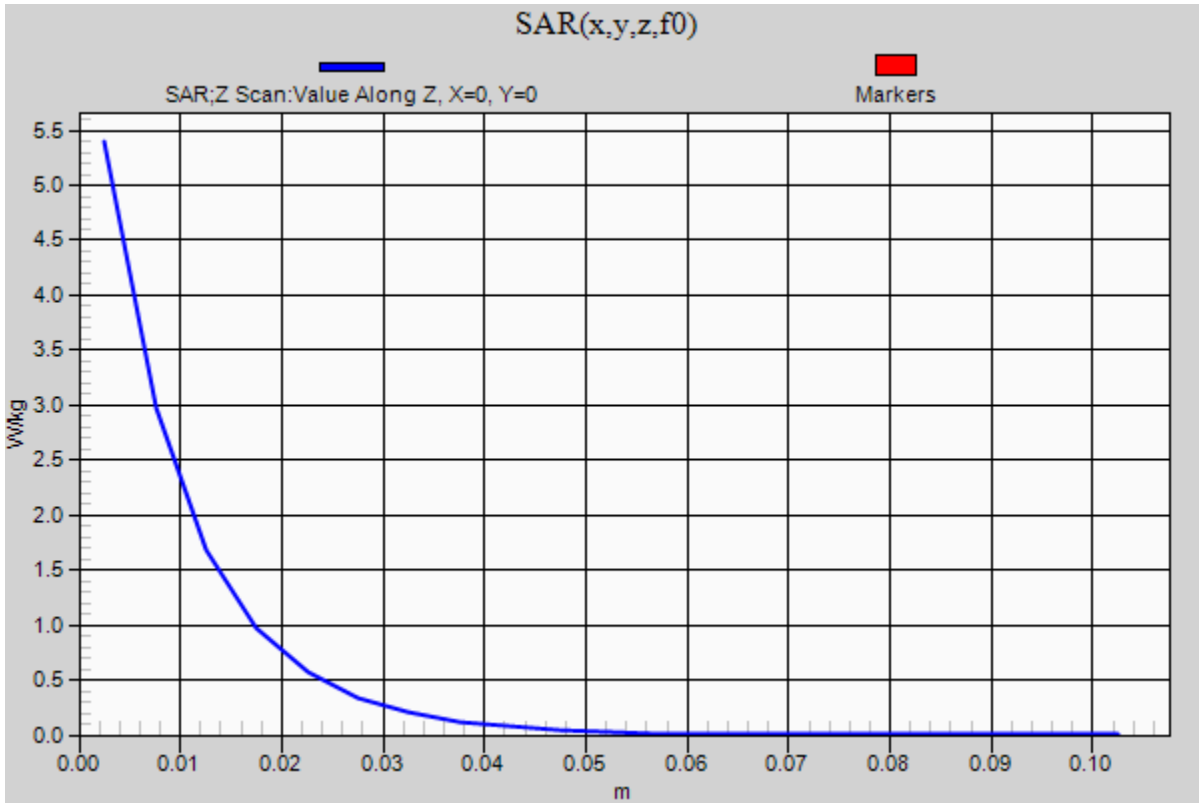


0 dB = 5.59 W/kg = 7.47 dBW/kg

### 20160117\_SystemPerformanceCheck-D1900V2 SN 5d043

Frequency: 1900 MHz; Duty Cycle: 1:1

**Body/Pin=100 mW/Z Scan (1x1x21):** Measurement grid: dx=20mm, dy=20mm, dz=5mm  
Maximum value of SAR (measured) = 5.40 W/kg



## 20170119\_SystemPerformanceCheck-D835V2 SN 4d002

Frequency: 835 MHz; Duty Cycle: 1:1; Room Ambient Temperature: 24.0°C; Liquid Temperature: 23.0°C

Medium parameters used:  $f = 835 \text{ MHz}$ ;  $\sigma = 1.008 \text{ S/m}$ ;  $\epsilon_r = 53.475$ ;  $\rho = 1000 \text{ kg/m}^3$

DASY5 Configuration:

- Area Scan Setting: Find Secondary Maximum Within: 2.0 dB and with a peak SAR value greater than 0.0012W/kg
- Electronics: DAE4 Sn1377; Calibrated: 9/14/2016
- Probe: EX3DV4 - SN3686; ConvF(9.12, 9.12, 9.12); Calibrated: 8/25/2016;
- Sensor-Surface: 2.5mm (Mechanical Surface Detection)
- Phantom: ELI v5.0 (B); Type: QDOVA001BB; Serial: 1118

**Body/Pin=100 mW/Area Scan (7x7x1):** Measurement grid: dx=15mm, dy=15mm

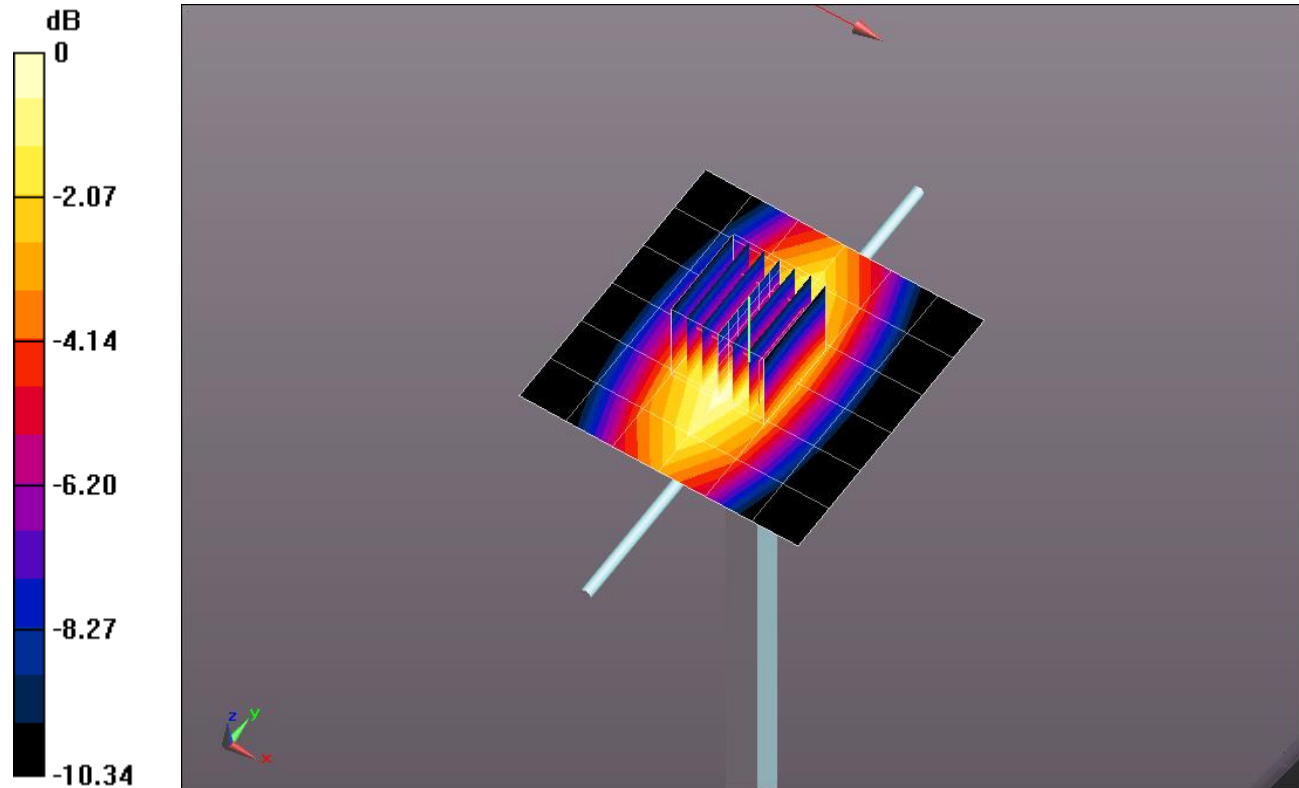
Maximum value of SAR (measured) = 1.14 W/kg

**Body/Pin=100 mW/Zoom Scan (7x7x7)/Cube 0:** Measurement grid: dx=5mm, dy=5mm, dz=5mm

Reference Value = 33.832 V/m; Power Drift = 0.07 dB

Peak SAR (extrapolated) = 1.40 W/kg

**SAR(1 g) = 0.940 W/kg; SAR(10 g) = 0.619 W/kg**

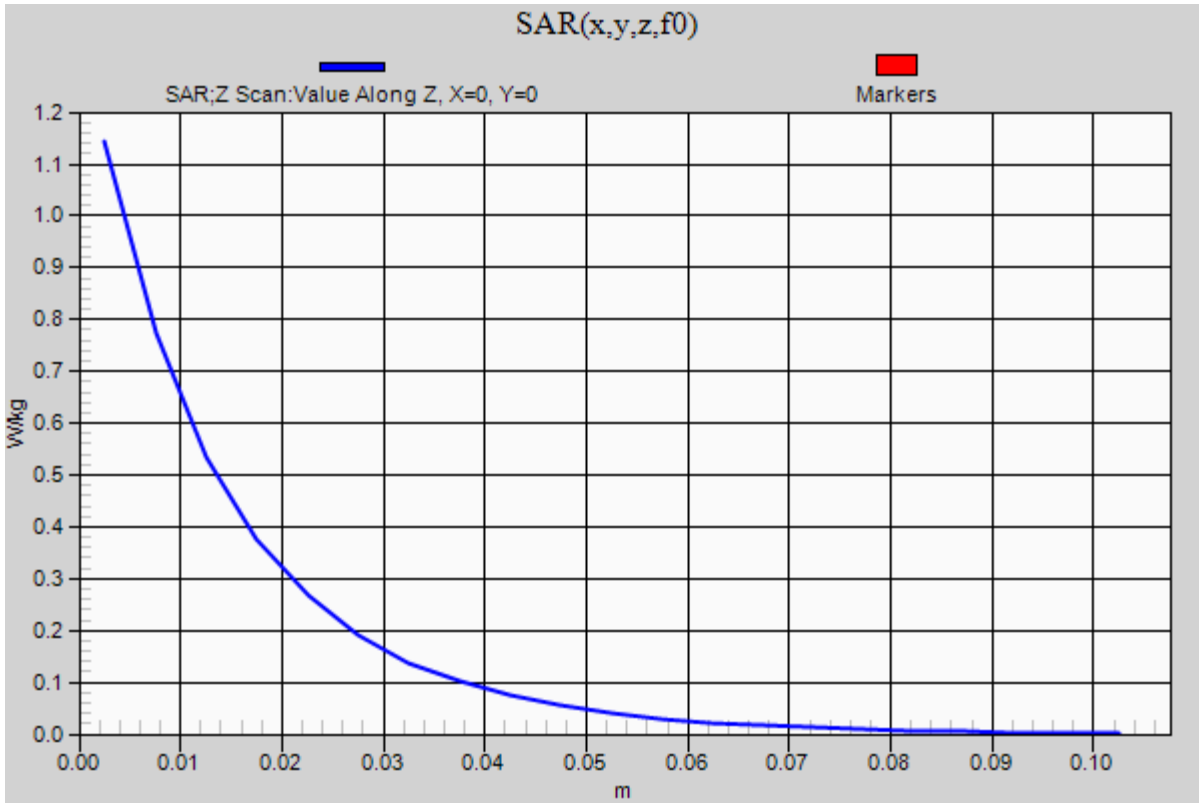


0 dB = 1.14 W/kg = 0.57 dBW/kg

### 20170119\_SystemPerformanceCheck-D835V2 SN 4d002

Frequency: 835 MHz; Duty Cycle: 1:1

**Body/Pin=100 mW/Z Scan (1x1x21):** Measurement grid: dx=20mm, dy=20mm, dz=5mm  
Maximum value of SAR (measured) = 1.14 W/kg



## 20170112\_SystemPerformanceCheck-D1750V2 SN 1050

Frequency: 1750 MHz; Duty Cycle: 1:1; Room Ambient Temperature: 24.0°C; Liquid Temperature: 23.0°C

Medium parameters used:  $f = 1750$  MHz;  $\sigma = 1.514$  S/m;  $\epsilon_r = 52.818$ ;  $\rho = 1000$  kg/m<sup>3</sup>

DASY5 Configuration:

- Area Scan Setting: Find Secondary Maximum Within: 2.0 dB and with a peak SAR value greater than 0.0012W/kg
- Electronics: DAE4 Sn1380; Calibrated: 7/25/2016
- Probe: EX3DV4 - SN3990; ConvF(8.4, 8.4, 8.4); Calibrated: 3/22/2016;
- Sensor-Surface: 2.5mm (Mechanical Surface Detection)
- Phantom: ELI v5.0 B; Type: QDOVA002AA; Serial: 1248

**Body/Pin=100 mW/Area Scan (7x7x1):** Measurement grid: dx=15mm, dy=15mm

Maximum value of SAR (measured) = 4.98 W/kg

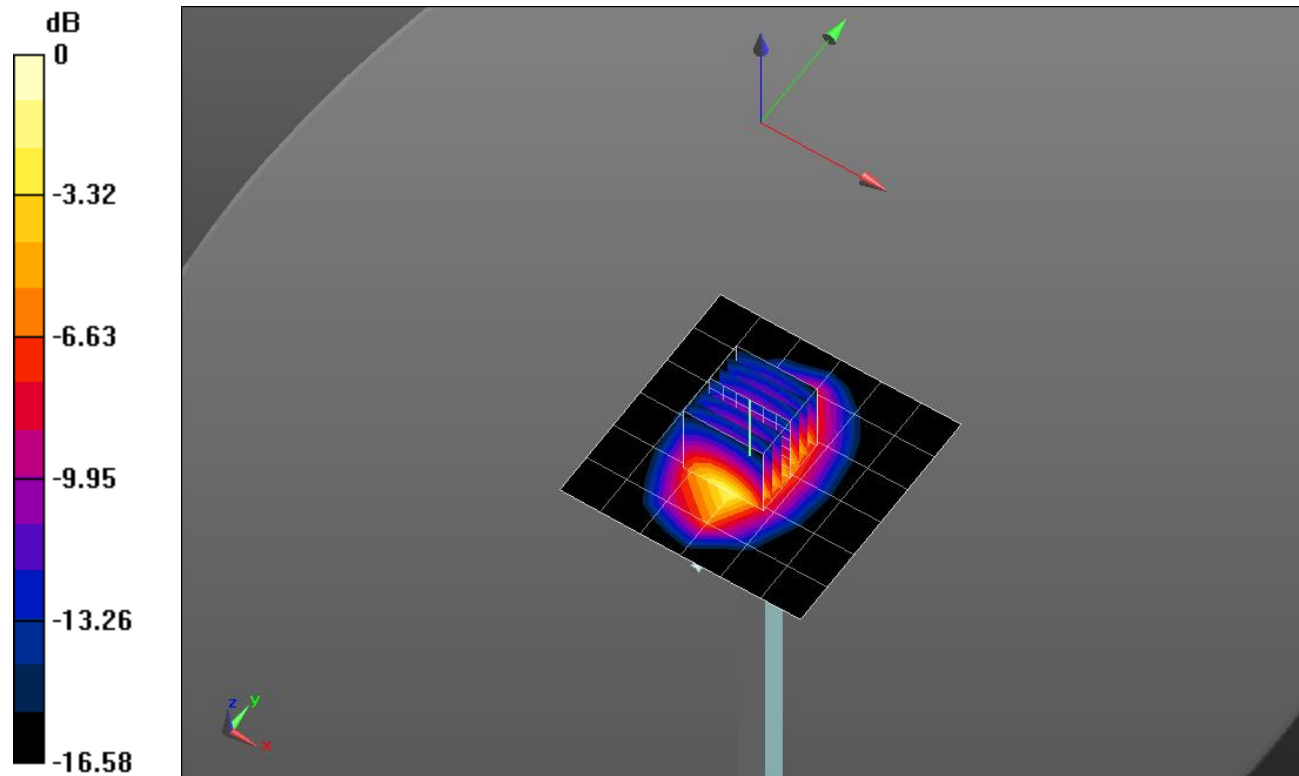
**Body/Pin=100 mW/Zoom Scan (7x7x7)/Cube 0:** Measurement grid: dx=5mm, dy=5mm, dz=5mm

Reference Value = 57.744 V/m; Power Drift = 0.10 dB

Peak SAR (extrapolated) = 7.12 W/kg

**SAR(1 g) = 3.92 W/kg; SAR(10 g) = 2.06 W/kg**

Maximum value of SAR (measured) = 5.29 W/kg

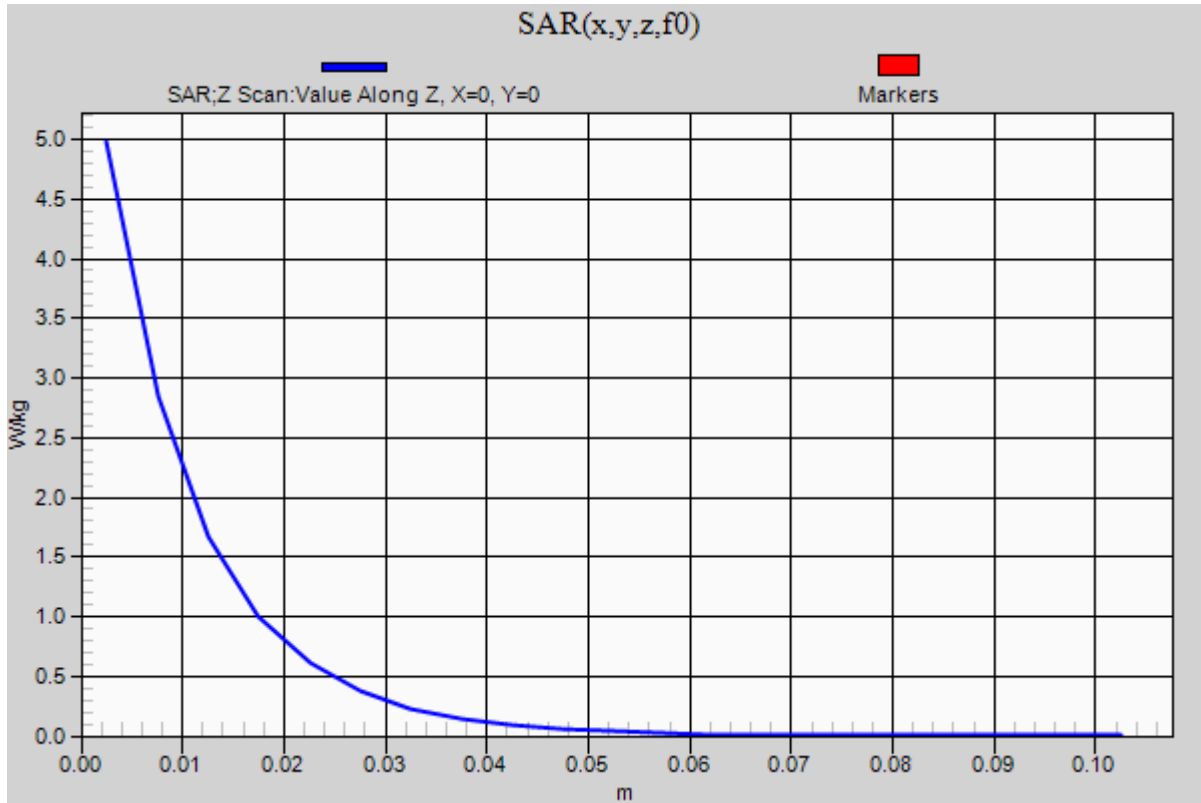


0 dB = 5.29 W/kg = 7.23 dBW/kg

### 20170112\_SystemPerformanceCheck-D1750V2 SN 1050

Frequency: 1750 MHz; Duty Cycle: 1:1

**Body/Pin=100 mW/Z Scan (1x1x21):** Measurement grid: dx=20mm, dy=20mm, dz=5mm  
Maximum value of SAR (measured) = 4.98 W/kg



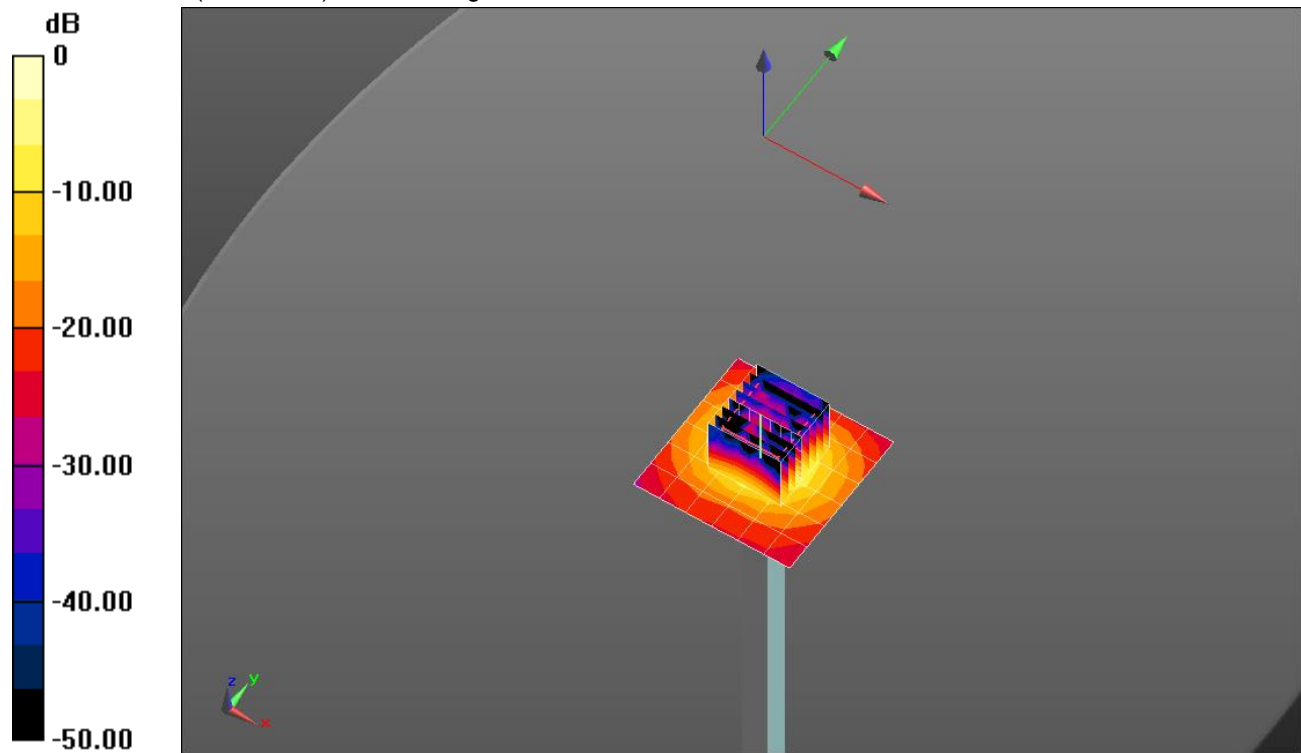
## 20161222\_SystemPerformanceCheck-D5GHzV2 SN 1138

Frequency: 5200 MHz; Duty Cycle: 1:1; Room Ambient Temperature: 24.0°C; Liquid Temperature: 23.0°C  
 Medium parameters used:  $f = 5200$  MHz;  $\sigma = 5.446$  S/m;  $\epsilon_r = 47.273$ ;  $\rho = 1000$  kg/m<sup>3</sup>  
 DASY5 Configuration:

- Area Scan Setting: Find Secondary Maximum Within: 2.0 dB and with a peak SAR value greater than 0.0012W/kg
- Electronics: DAE4 Sn1434; Calibrated: 4/15/2016
- Probe: EX3DV4 - SN3929; ConvF(4.14, 4.14, 4.14); Calibrated: 3/22/2016;
- Sensor-Surface: 1.4mm (Mechanical Surface Detection)
- Phantom: ELI v5.0 A; Type: SM 000 T01 DA; Serial: TP:1247

**Body/5.2 GHz, Pin=100mW/Area Scan (7x7x1):** Measurement grid: dx=10mm, dy=10mm  
 Maximum value of SAR (measured) = 18.3 W/kg

**Body/5.2 GHz, Pin=100mW/Zoom Scan (8x8x7)/Cube 0:** Measurement grid: dx=4mm, dy=4mm, dz=1.4mm  
 Reference Value = 52.34 V/m; Power Drift = -0.01 dB  
 Peak SAR (extrapolated) = 31.9 W/kg  
**SAR(1 g) = 7.89 W/kg; SAR(10 g) = 2.2 W/kg**  
 Maximum value of SAR (measured) = 18.5 W/kg

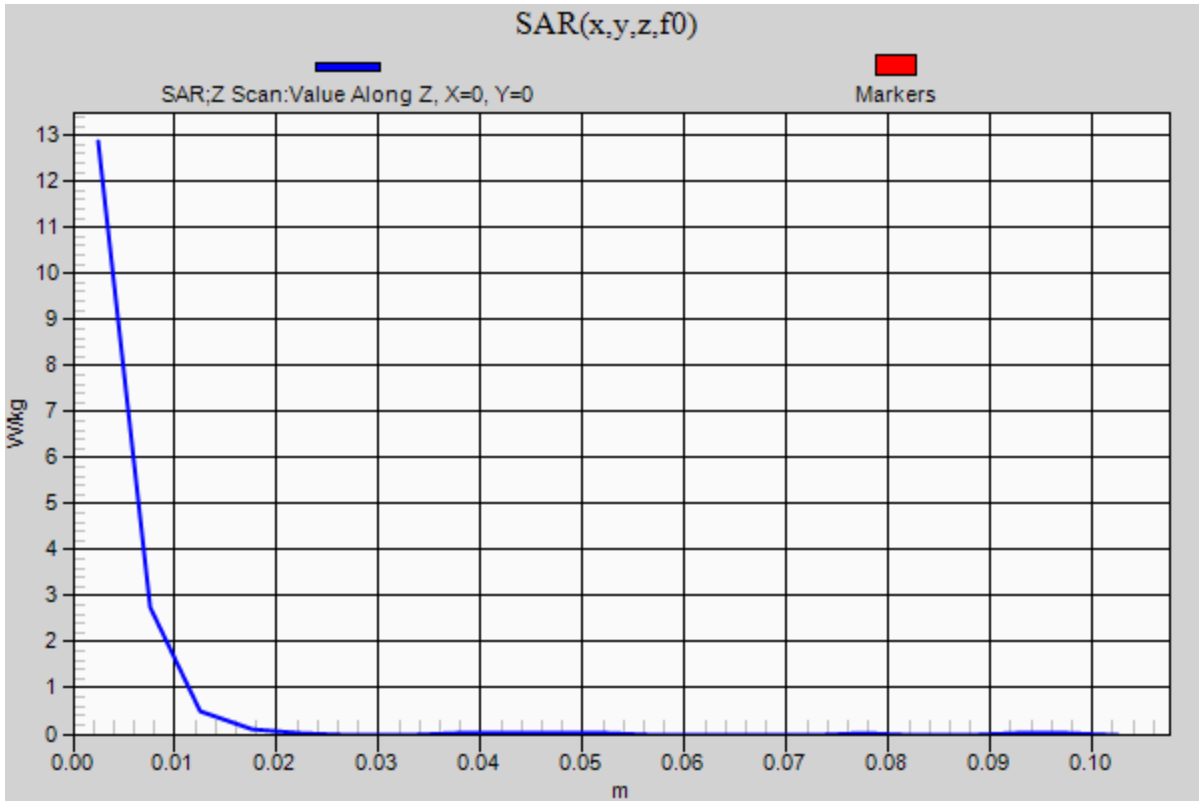


0 dB = 18.5 W/kg = 12.67 dBW/kg

### 20161222\_SystemPerformanceCheck-D5GHzV2 SN 1138

Frequency: 5200 MHz; Duty Cycle: 1:1

**Body/5.2 GHz, Pin=100mW/Z Scan (1x1x21):** Measurement grid: dx=20mm, dy=20mm, dz=5mm  
Maximum value of SAR (measured) = 12.9 W/kg



## 20161227\_SystemPerformanceCheck-D5GHzV2 SN 1168

Frequency: 5200 MHz; Duty Cycle: 1:1; Room Ambient Temperature: 24.0°C; Liquid Temperature: 23.0°C  
 Medium parameters used:  $f = 5200 \text{ MHz}$ ;  $\sigma = 5.411 \text{ S/m}$ ;  $\epsilon_r = 48.383$ ;  $\rho = 1000 \text{ kg/m}^3$

DASY5 Configuration:

- Area Scan Setting: Find Secondary Maximum Within: 2.0 dB and with a peak SAR value greater than 0.0012W/kg
- Electronics: DAE4 Sn1434; Calibrated: 4/15/2016
- Probe: EX3DV4 - SN3929; ConvF(4.14, 4.14, 4.14); Calibrated: 3/22/2016;
- Sensor-Surface: 1.4mm (Mechanical Surface Detection)
- Phantom: ELI v5.0 A; Type: SM 000 T01 DA; Serial: TP:1247

**Body/5.2 GHz, Pin=100mW/Area Scan (7x7x1):** Measurement grid: dx=10mm, dy=10mm

Maximum value of SAR (measured) = 18.8 W/kg

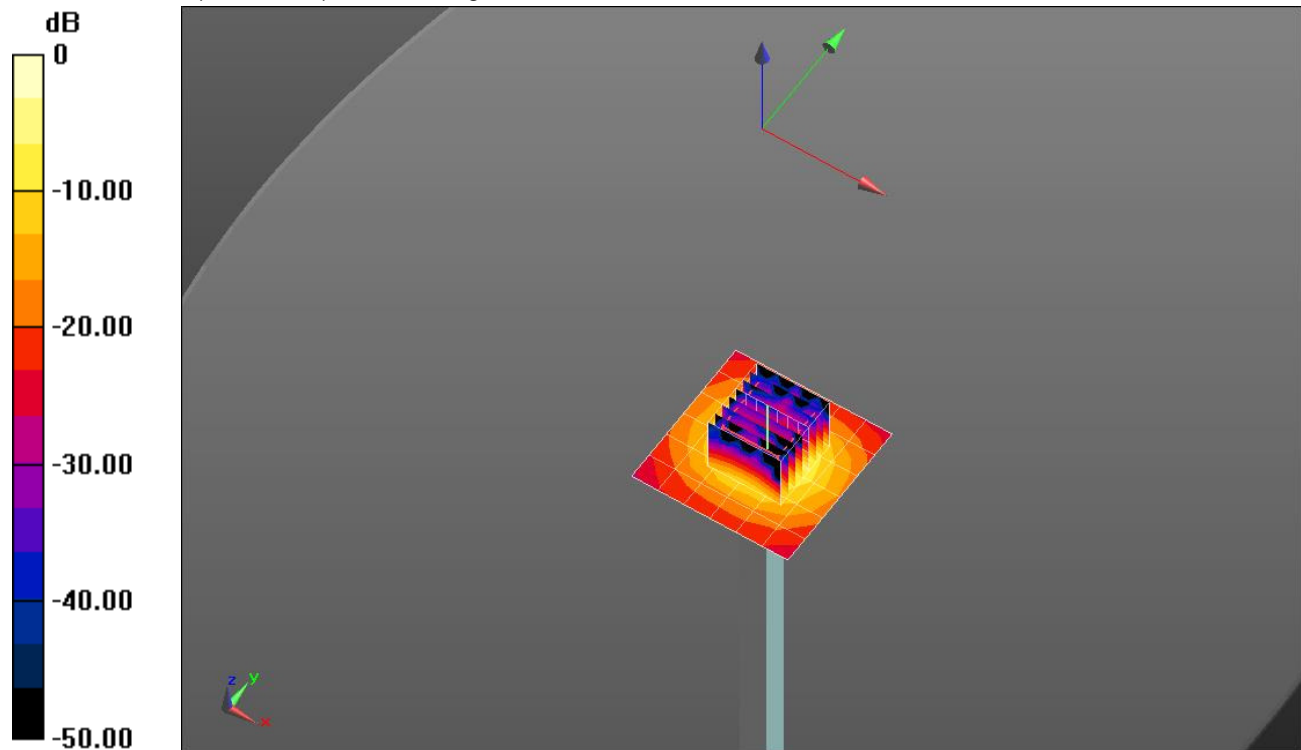
**Body/5.2 GHz, Pin=100mW/Zoom Scan (8x8x7)/Cube 0:** Measurement grid: dx=4mm, dy=4mm, dz=1.4mm

Reference Value = 53.19 V/m; Power Drift = -0.14 dB

Peak SAR (extrapolated) = 31.3 W/kg

**SAR(1 g) = 7.56 W/kg; SAR(10 g) = 2.12 W/kg**

Maximum value of SAR (measured) = 18.0 W/kg

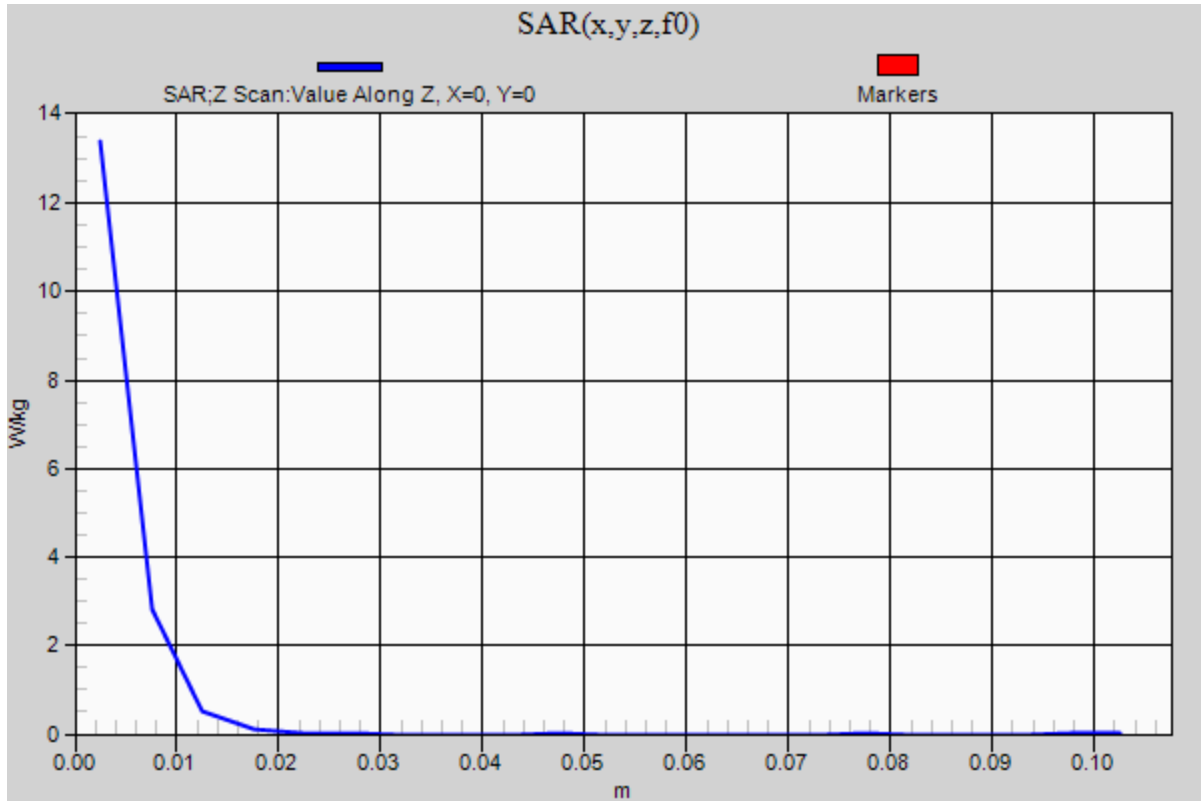


0 dB = 18.0 W/kg = 12.55 dBW/kg

### 20161227\_SystemPerformanceCheck-D5GHzV2 SN 1168

Frequency: 5200 MHz; Duty Cycle: 1:1

**Body/5.2 GHz, Pin=100mW/Z Scan (1x1x21):** Measurement grid: dx=20mm, dy=20mm, dz=5mm  
Maximum value of SAR (measured) = 13.4 W/kg



## 20170103\_SystemPerformanceCheck-D5GHzV2 SN 1168

Frequency: 5800 MHz; Duty Cycle: 1:1; Room Ambient Temperature: 24.0°C; Liquid Temperature: 23.0°C  
 Medium parameters used:  $f = 5800 \text{ MHz}$ ;  $\sigma = 6.109 \text{ S/m}$ ;  $\epsilon_r = 48.083$ ;  $\rho = 1000 \text{ kg/m}^3$

DASY5 Configuration:

- Area Scan Setting: Find Secondary Maximum Within: 2.0 dB and with a peak SAR value greater than 0.0012W/kg
- Electronics: DAE4 Sn1434; Calibrated: 4/15/2016
- Probe: EX3DV4 - SN3929; ConvF(3.72, 3.72, 3.72); Calibrated: 3/22/2016;
- Sensor-Surface: 1.4mm (Mechanical Surface Detection)
- Phantom: ELI v5.0 A; Type: SM 000 T01 DA; Serial: TP:1247

**Body/5.8 GHz, Pin=100mW/Area Scan (7x7x1):** Measurement grid: dx=10mm, dy=10mm  
 Maximum value of SAR (measured) = 17.2 W/kg

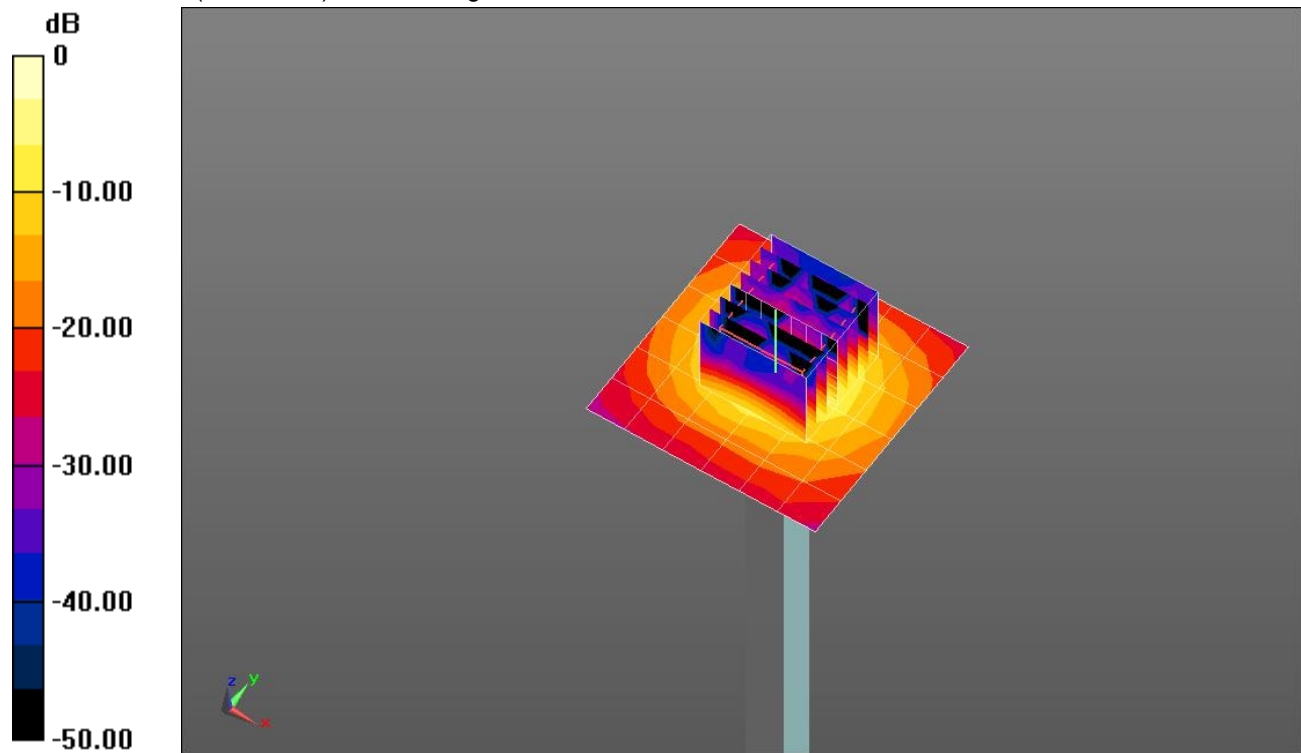
**Body/5.8 GHz, Pin=100mW/Zoom Scan (8x8x7)/Cube 0:** Measurement grid: dx=4mm, dy=4mm, dz=1.4mm

Reference Value = 48.11 V/m; Power Drift = -0.17 dB

Peak SAR (extrapolated) = 31.6 W/kg

**SAR(1 g) = 7.12 W/kg; SAR(10 g) = 1.99 W/kg**

Maximum value of SAR (measured) = 17.5 W/kg

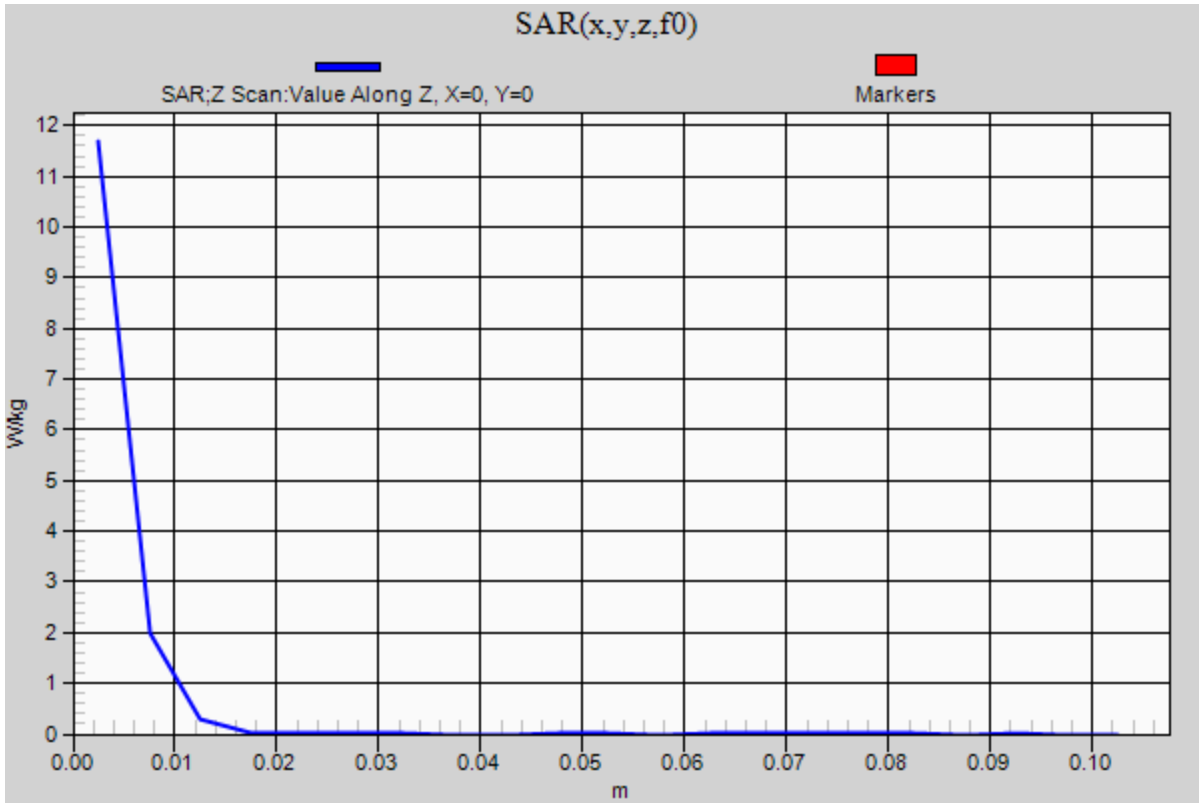


0 dB = 17.5 W/kg = 12.43 dBW/kg

### 20170103\_SystemPerformanceCheck-D5GHzV2 SN 1168

Frequency: 5800 MHz; Duty Cycle: 1:1

**Body/5.8 GHz, Pin=100mW/Z Scan (1x1x21):** Measurement grid: dx=20mm, dy=20mm, dz=5mm  
Maximum value of SAR (measured) = 11.7 W/kg



## 20170117\_SystemPerformanceCheck-D835V2 SN 4d002

Frequency: 835 MHz; Duty Cycle: 1:1; Room Ambient Temperature: 24.0°C; Liquid Temperature: 23.0°C

Medium parameters used:  $f = 835$  MHz;  $\sigma = 1.003$  S/m;  $\epsilon_r = 53.648$ ;  $\rho = 1000$  kg/m<sup>3</sup>

DASY5 Configuration:

- Area Scan Setting: Find Secondary Maximum Within: 2.0 dB and with a peak SAR value greater than 0.0012W/kg
- Electronics: DAE4 Sn1434; Calibrated: 4/15/2016
- Probe: EX3DV4 - SN3929; ConvF(8.71, 8.71, 8.71); Calibrated: 3/22/2016;
- Sensor-Surface: 2.5mm (Mechanical Surface Detection)
- Phantom: ELI v5.0 B; Type: QDOVA002AA; Serial: 1248

**Body/Pin=100 mW/Area Scan (7x7x1):** Measurement grid: dx=15mm, dy=15mm

Maximum value of SAR (measured) = 1.23 W/kg

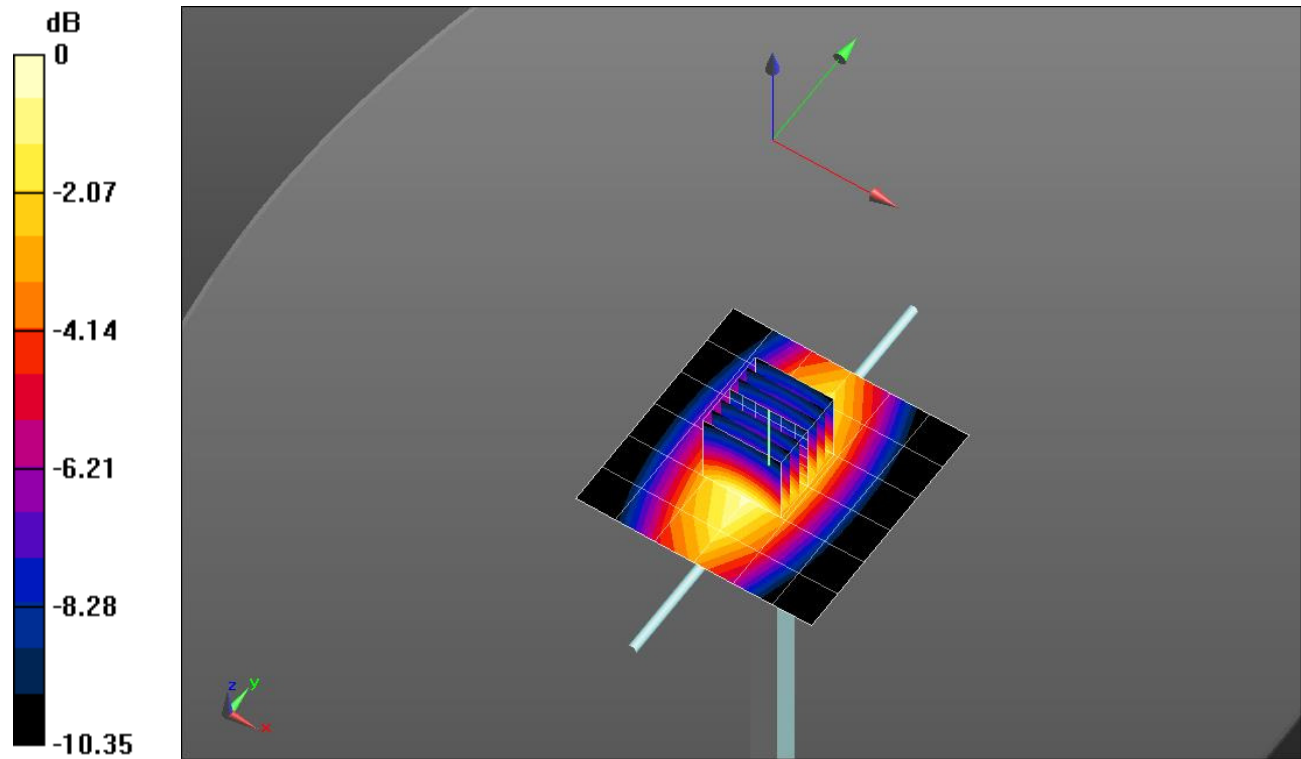
**Body/Pin=100 mW/Zoom Scan (7x7x7)/Cube 0:** Measurement grid: dx=5mm, dy=5mm, dz=5mm

Reference Value = 35.56 V/m; Power Drift = 0.02 dB

Peak SAR (extrapolated) = 1.53 W/kg

**SAR(1 g) = 1.03 W/kg; SAR(10 g) = 0.676 W/kg**

Maximum value of SAR (measured) = 1.25 W/kg



0 dB = 1.25 W/kg = 0.97 dBW/kg

### 20170117\_SystemPerformanceCheck-D835V2 SN 4d002

Frequency: 835 MHz; Duty Cycle: 1:1

**Body/Pin=100 mW/Z Scan (1x1x21):** Measurement grid: dx=20mm, dy=20mm, dz=5mm  
Maximum value of SAR (measured) = 1.24 W/kg

