
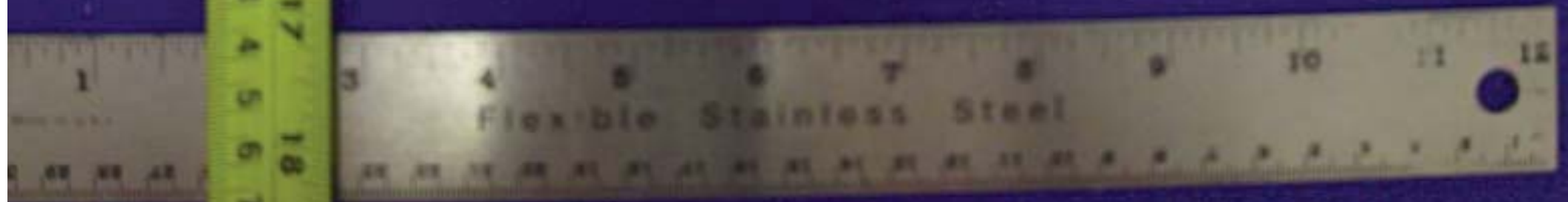


The design and layout of this label are tentative.



The image shows a white, rectangular transmitter device with a label on its front. A yellow ruler is placed vertically to the left of the device, and a silver ruler is placed horizontally below it. A red arrow points from the text above to the label on the device.

TRANSMITTER
MODEL ZM-541PA
SN 1000 D 2009
3.6V
MADE IN NIPPON KOKI DEN CORPORATION
Japan 1-31-4 Kashiwa-ku, Shinjuku-ku, Tokyo, Japan
FCC ID B682M-541PA
Operator of this equipment requires the prior certification of a frequency coordinator designated by the FCC for the Stratos Medical Telemedicine Service.





10
11
12
13
14
15
16
17
18
FT
30
40

1 2 3 4 5 6 7 8 9 10 11 12
Flexible Stainless Steel



