

EXHIBIT 9**INTERNAL PHOTOGRAPHS**

(Pursuant to FCC Part 2.1033(b)(7), 2.1033(c)(12) and RSP 100 Sec 8.3)

The following photographs are attached.

Exhibit

1. RF board with Shields (Top).	9A
2. RF board without Shields (Top).	9B
3. RF board with Shields (Bottom).	9C
4. RF board without Shields (Bottom).	9D
5. RF board <u>with</u> chassis and housing (front side), FKP	9E
6. Chassis and Housing (back side), FKP	9F
7. RF board <u>with</u> chassis and housing (front side), NKP	9G
8. Chassis and Housing (back side), NKP	9H
9. Keypad board (Top), FKP	9I
10. Keypad board (Bottom), FKP	9J
11. Interface Board (Top)	9K
12. Interface Board (Bottom)	9L
13. GOB board with Shields (Top).	9M
14. GOB board without Shields (Top).	9N
15. GOB board (Bottom).	9O
16. Exploded View of FKP radio	9P
17. Exploded View of NKP radio	9Q

Exhibits 9A



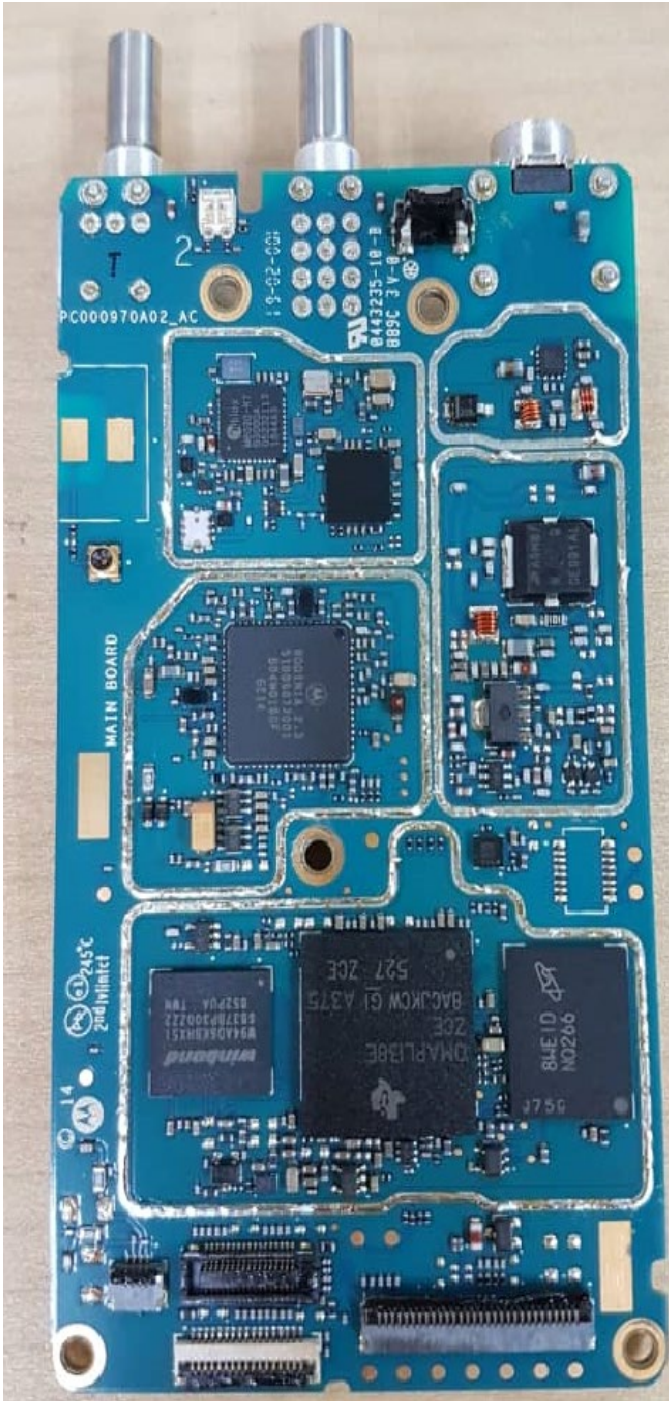
Non-SMA model



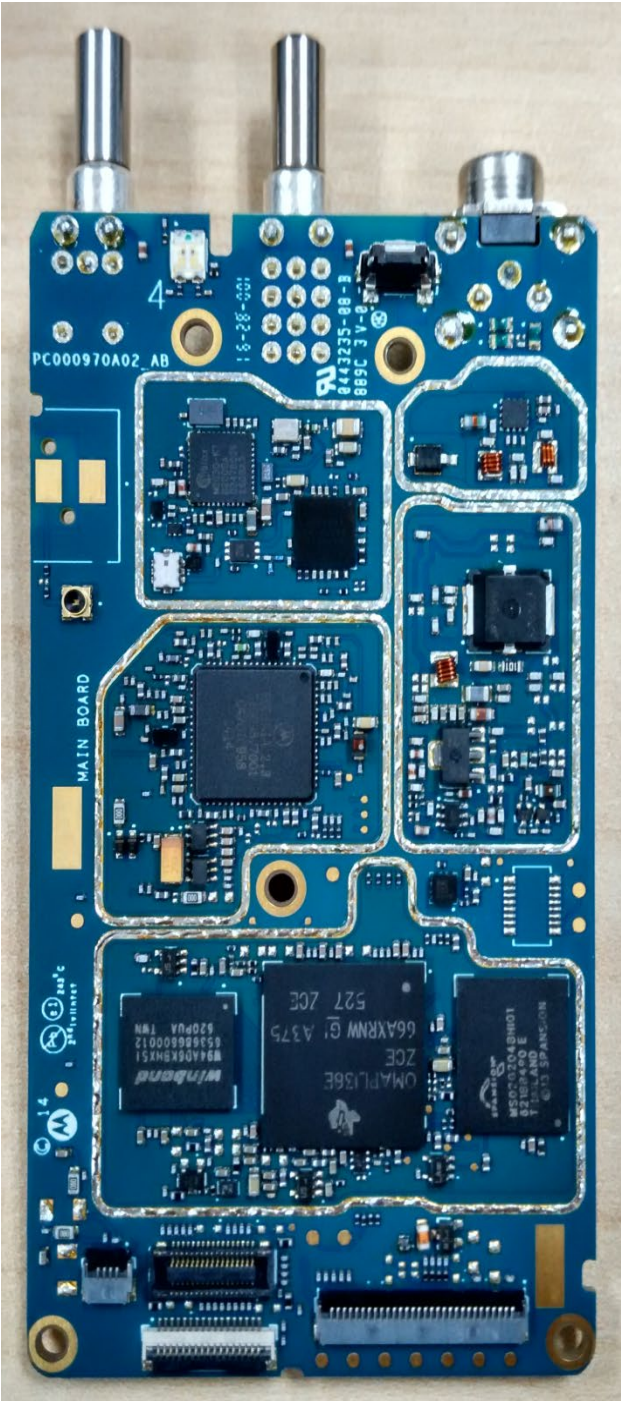
SMA model

RF board with Shields (Top)

Exhibit 9B



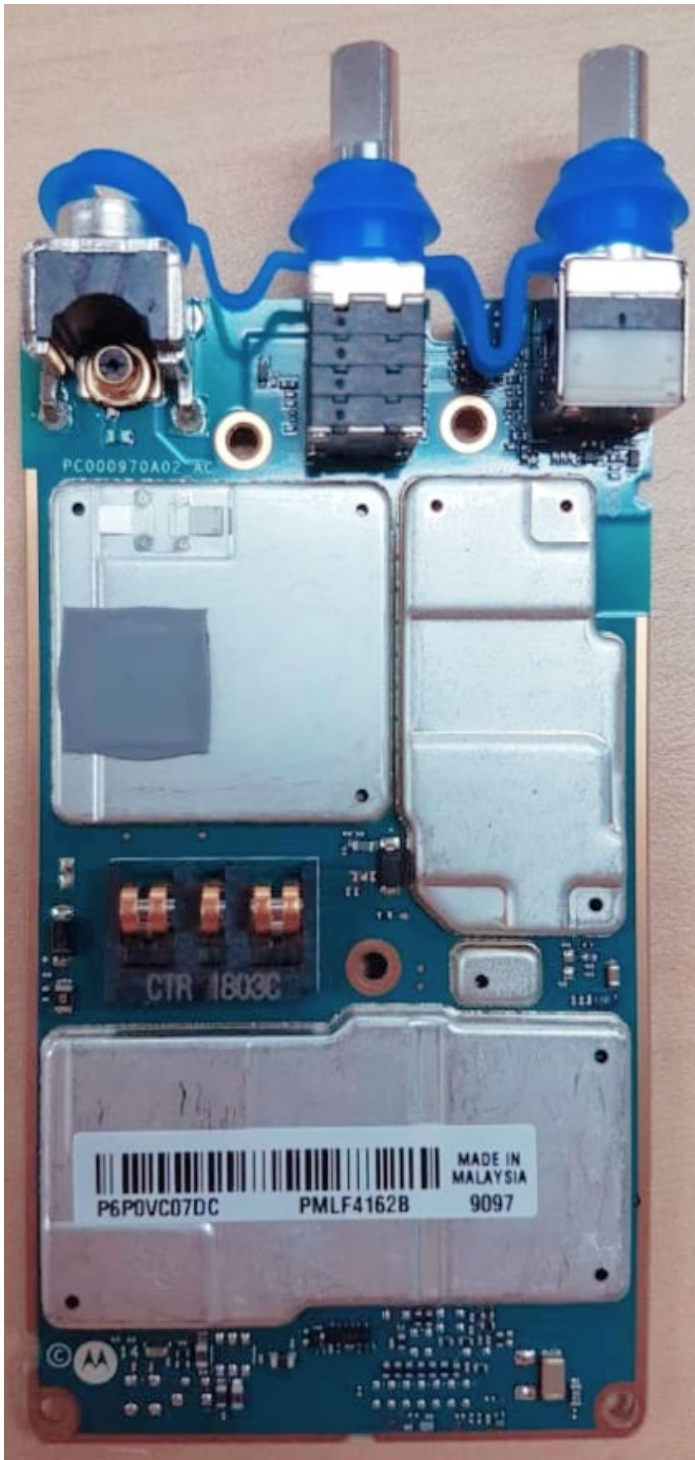
Non-SMA model



SMA model

RF board without Shields (Top)

Exhibit 9C



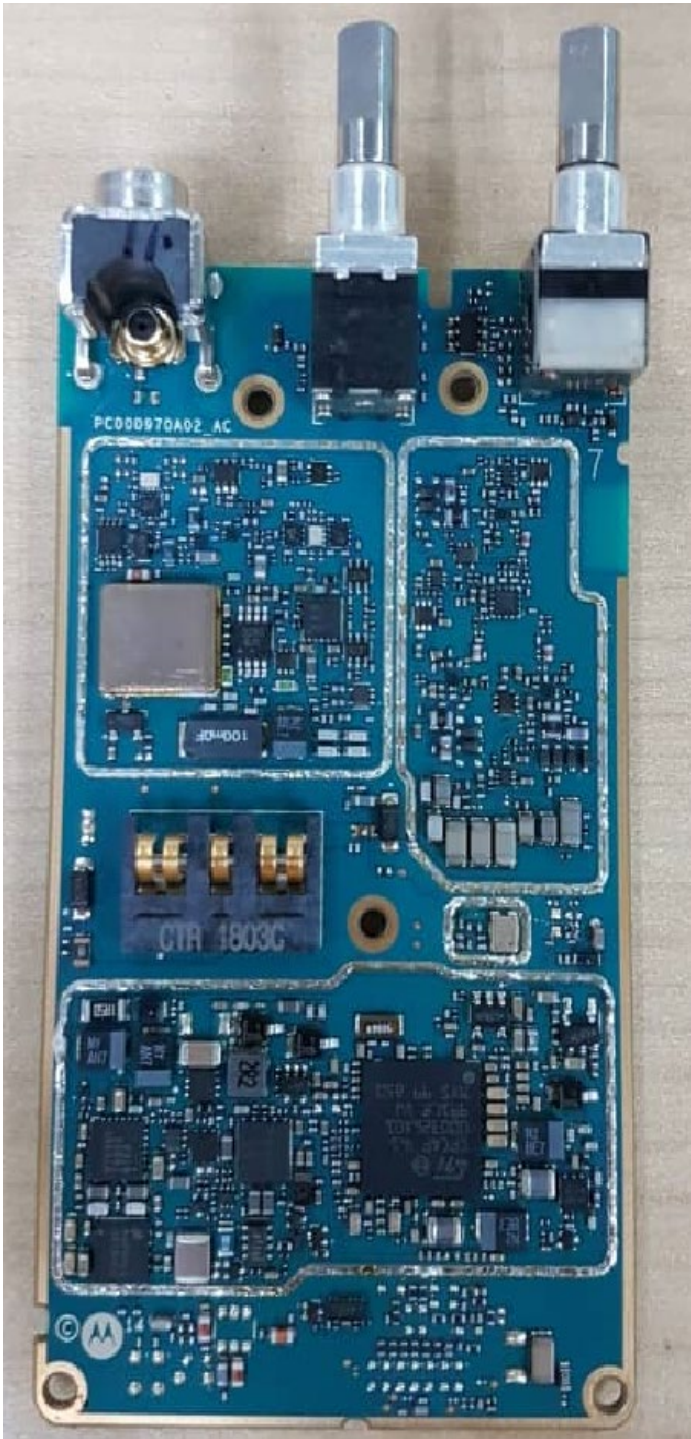
Non-SMA model



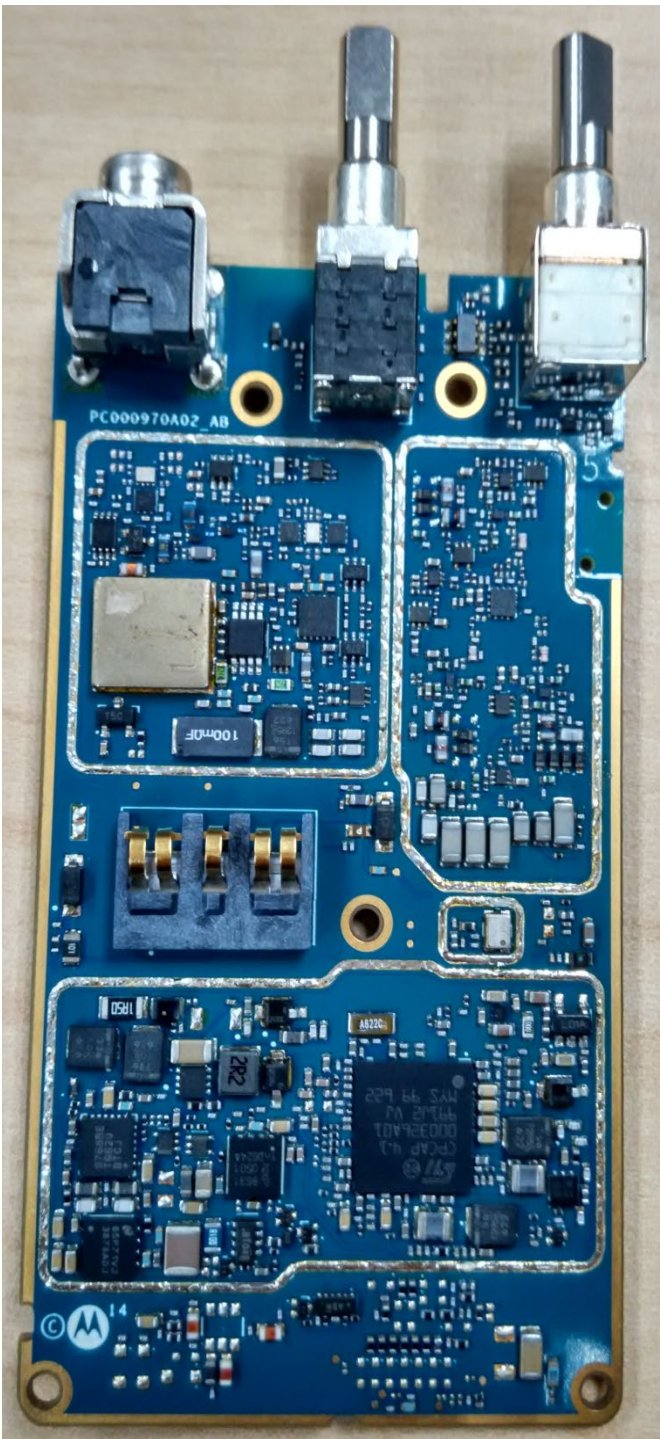
SMA model

RF board with Shields (Bottom)

Exhibit 9D



Non-SMA model



SMA model

RF board without Shields (Bottom)

Exhibit 9E



RF board with chassis and housing (front side) FKP

Exhibit 9F



Non-SMA model

SMA model

Chassis and Housing (back side) FKP model

Exhibit 9G

BT/WIFI
RF port



Non-SMA model

RF board with chassis and plain housing (front side) NKP model

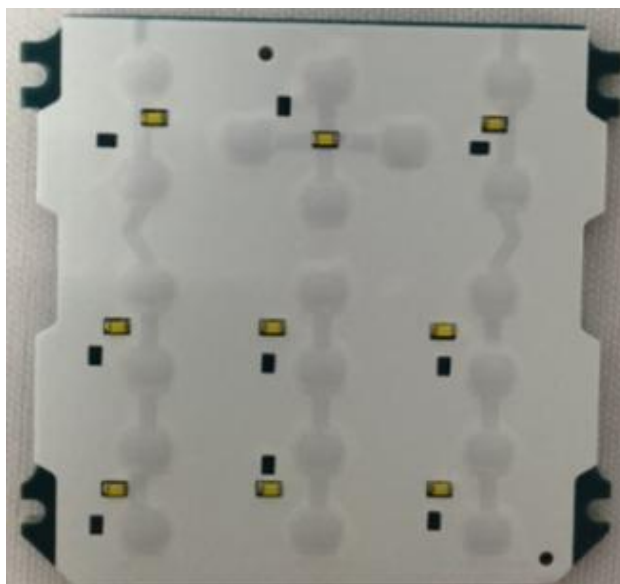
Exhibit 9H



Non-SMA model

Chassis and plain Housing (back side) NKP model

Exhibit 9I



Keypad board (Top) – FKP

Exhibit 9J



Keypad board (Bottom) – FKP

Exhibit 9K



Interface board (Top)

Exhibit 9L



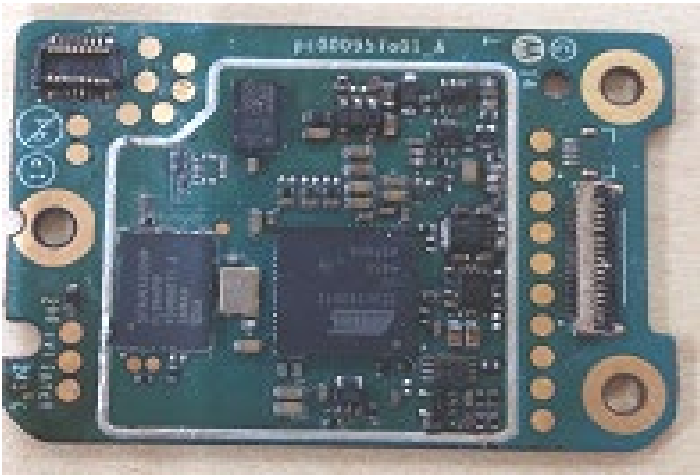
Interface board (Bottom)

Exhibit 9M



GOB board with Shields (Top)

Exhibit 9N



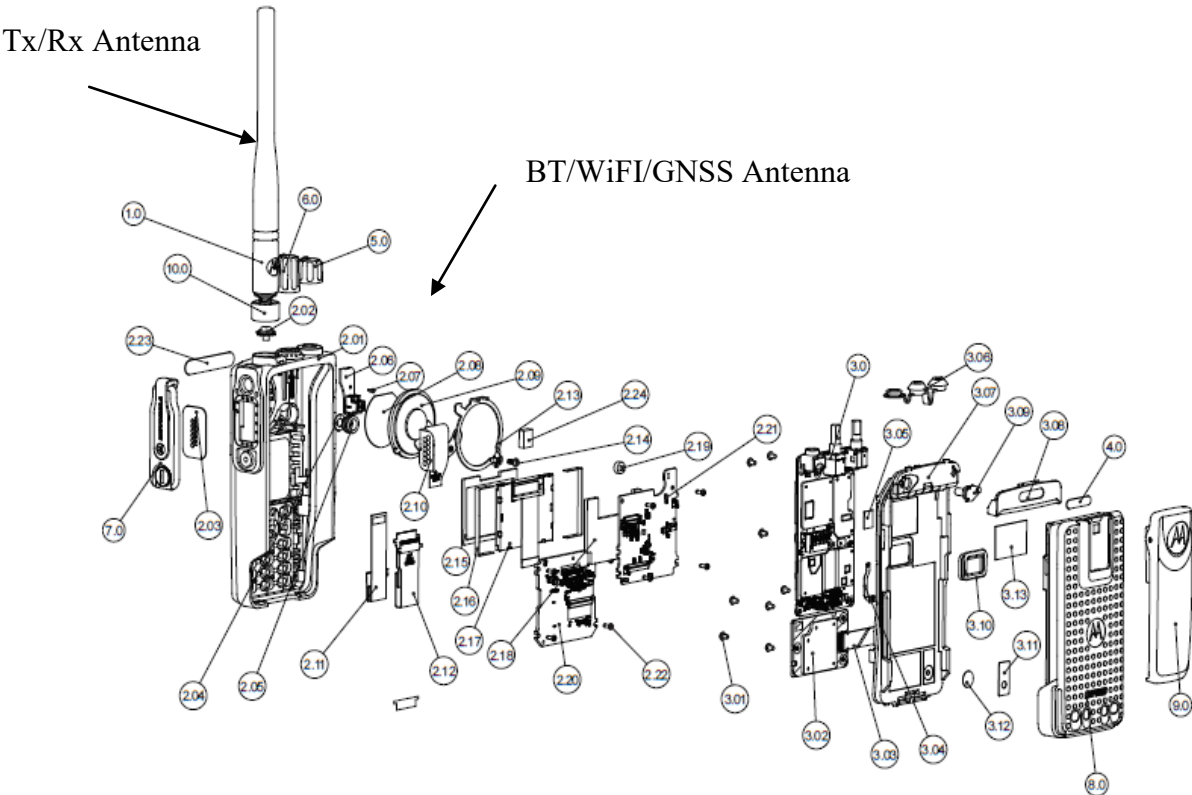
GOB board without shields (Top)

Exhibit 9O

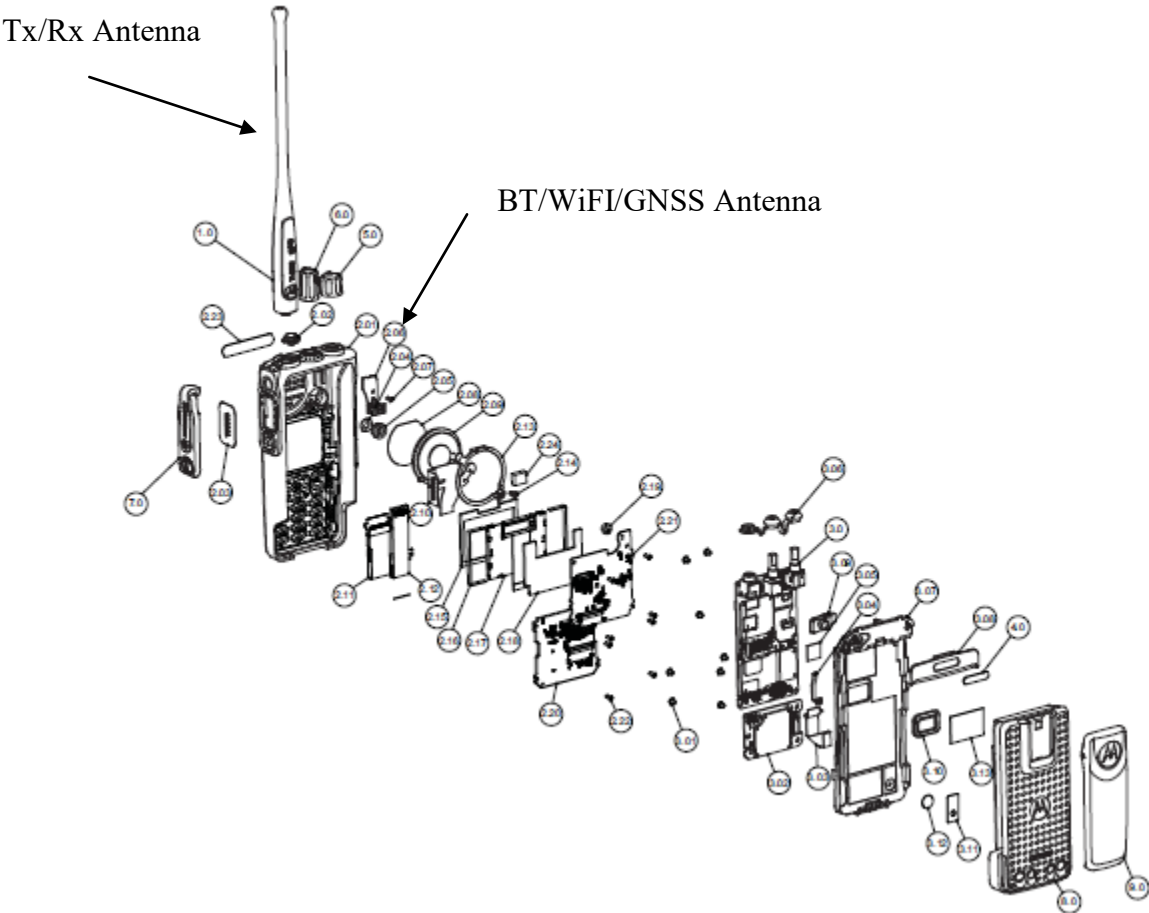


GOB board (Bottom)

Exhibit 9P

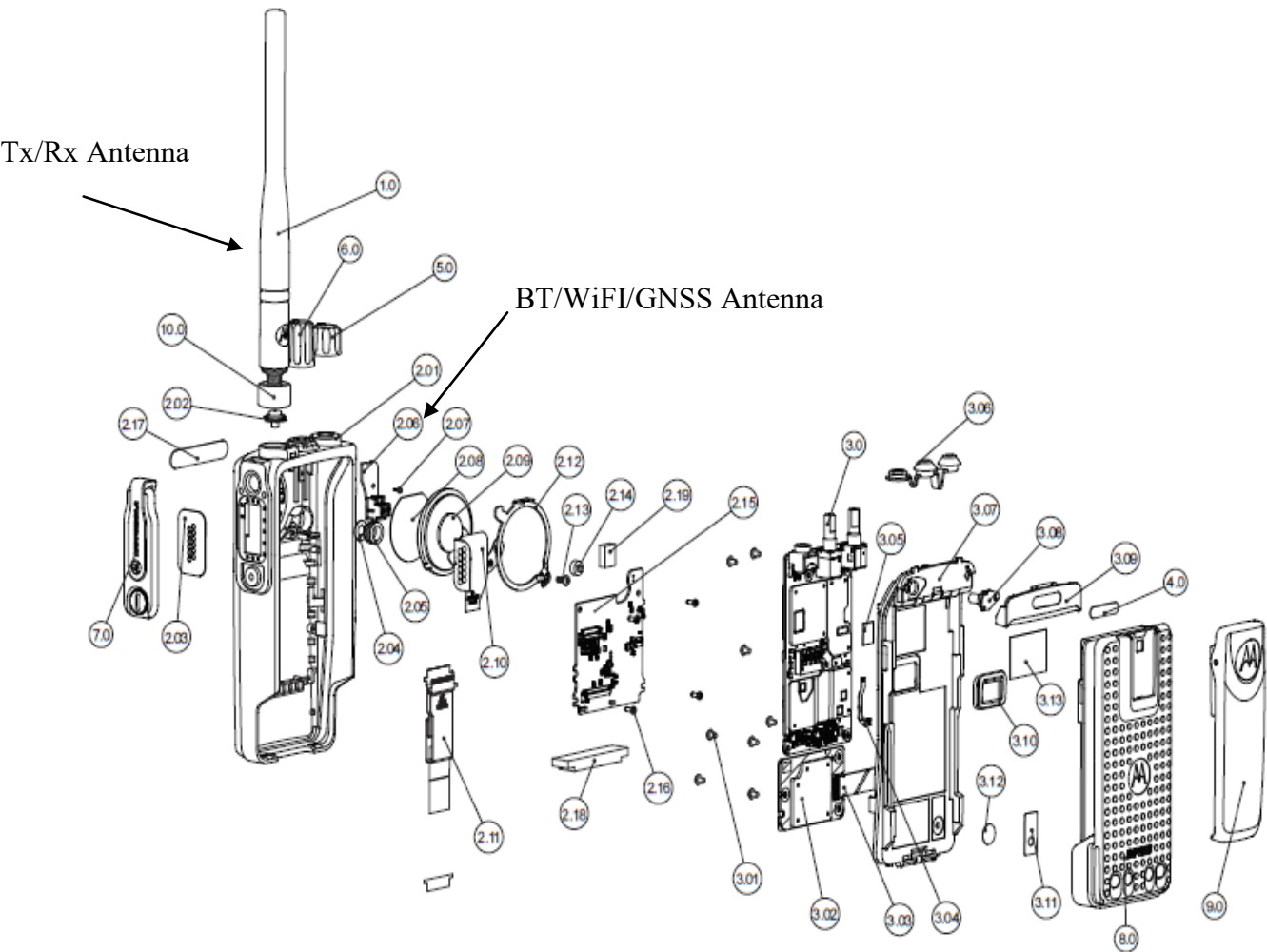


Exploded View of FKP Radio – Non-SMA model



Exploded View of FKP Radio – SMA model

Exhibit 9Q



Exploded View of NKP Radio – Non-SMA model