

EXHIBIT 9**INTERNAL PHOTOGRAPHS**

(Pursuant to FCC Part 2.1033(b)(7) and 2.1033(c)(12) and RSP 100 Sec 8.3)

The following photographs are attached.

Exhibit

- | | |
|--|----|
| 1. RF board <u>with</u> Chassis and Housing (Front Side), Model MTP8550EX | 9A |
| 2. RF board <u>with</u> Chassis and Housing (Front Side), Model MTP8500EX | 9B |
| 3. RF board <u>with</u> Chassis and Housing (Back Side), Model MTP8550EX/MTP8500EX | 9C |
| 4. RF board <u>with</u> Shields (Top), Model MTP8550EX /MTP8500EX | 9D |
| 5. RF board <u>without</u> Shields (Top), Model MTP8550EX/MTP8500EX | 9E |
| 6. RF board <u>with</u> Shields (Bottom), Model MTP8550EX/MTP8500EX | 9F |
| 7. RF board <u>without</u> Shields (Bottom), Model MTP8550EX/MTP8500EX | 9G |
| 8. Keypad Flex (Front and Back Side), Model MTP8550EX | 9H |
| 9. Keypad Flex (Front and Back Side), Model MTP8500EX | 9I |

Exhibits 9A



RF Board with Chassis and Housing (Front Side), Model MTP8550EX

Exhibit 9B



RF board with Chassis and Housing (Front Side), Model MTP8500EX

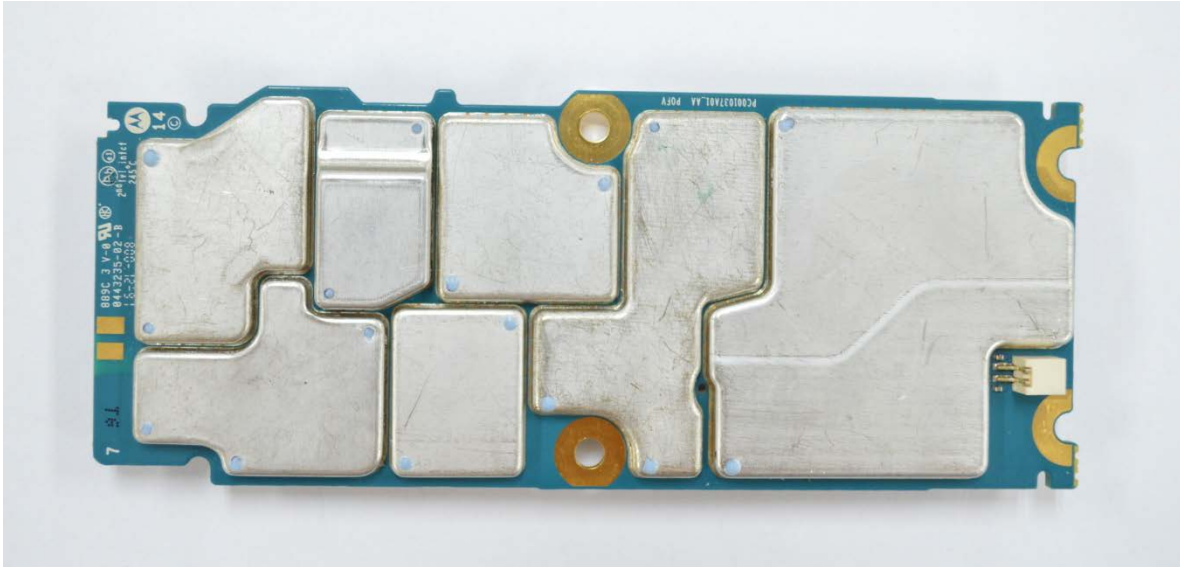
Exhibit 9C

BT Antenna



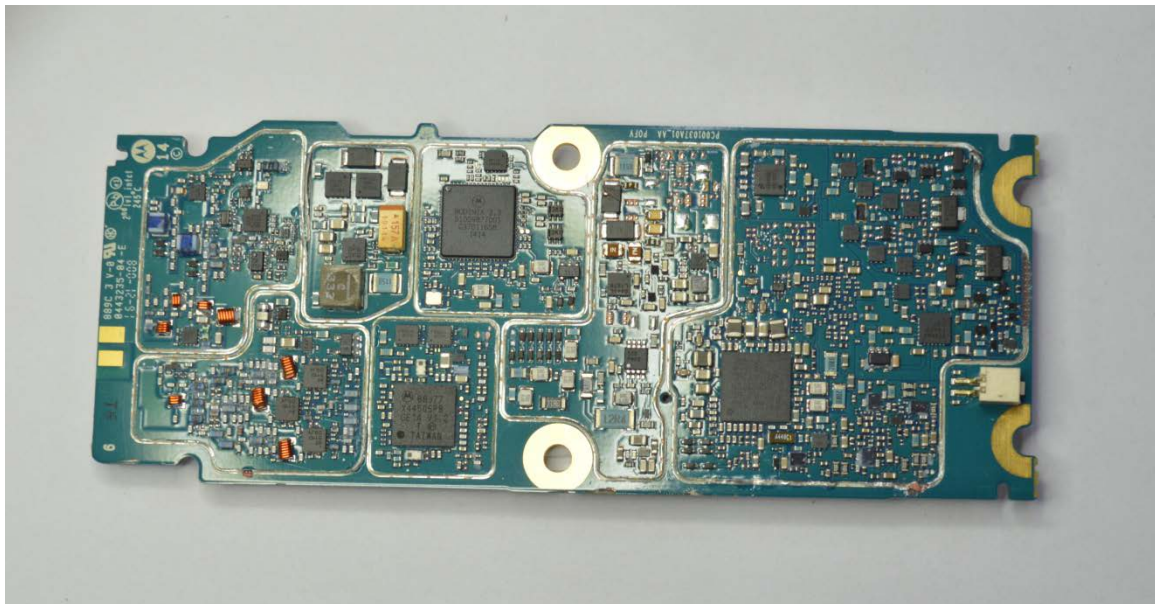
RF Board with Chassis and Housing (Back Side), Model MTP8550EX / MTP8500EX

Exhibit 9D



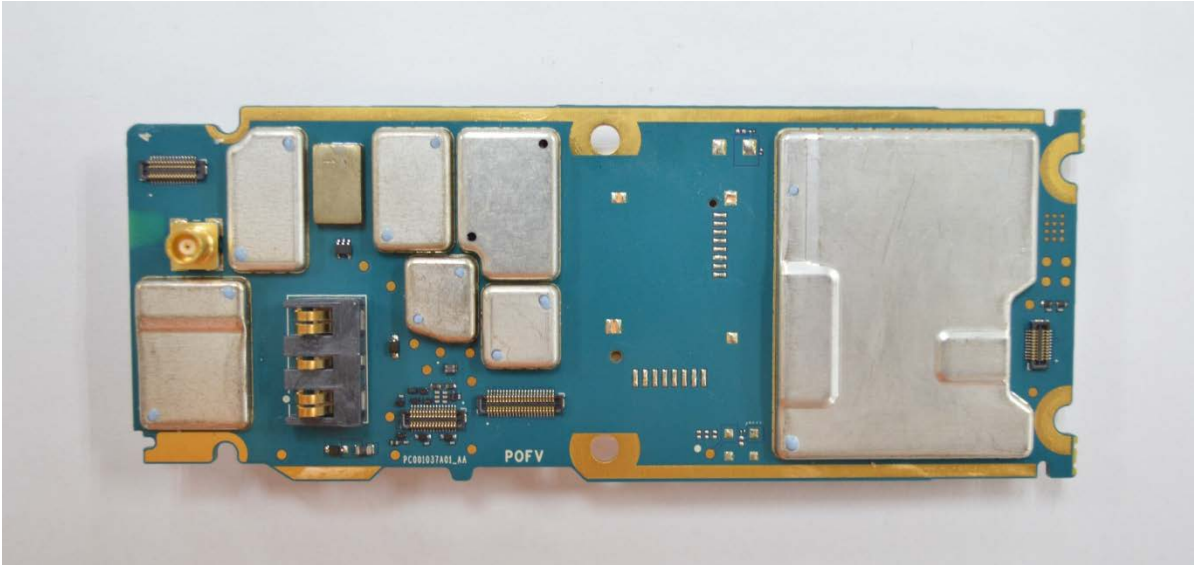
RF board with Shields (Top), Model MTP8550EX / MTP8500EX

Exhibit 9E



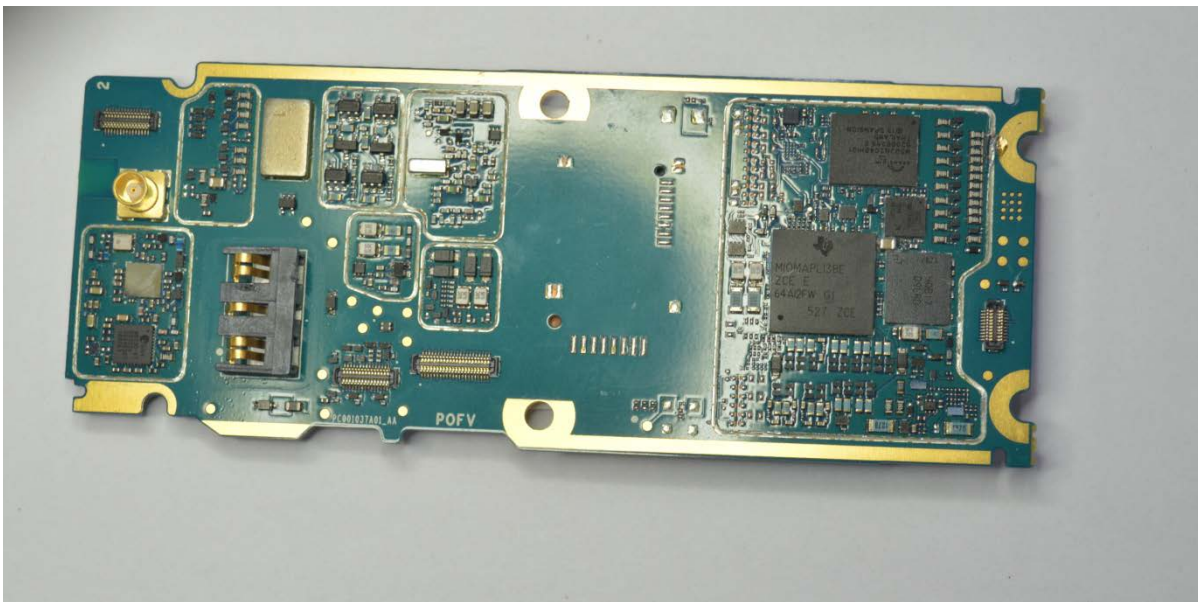
RF board without Shields (Top), Model MTP8550EX / MTP8500EX

Exhibit 9F



RF board with Shields (Bottom), Model MTP8550EX / MTP8500EX

Exhibit 9G



RF board without Shields (Bottom), Model MTP8550EX / MTP8500EX

Exhibit 9H



Front Side



Back Side

Keypad Flex (Front and Back Side), Model MTP8550EX

Exhibit 9



Front Side



Back Side

Keypad Flex (Front and Back Side), Model MTP8500EX