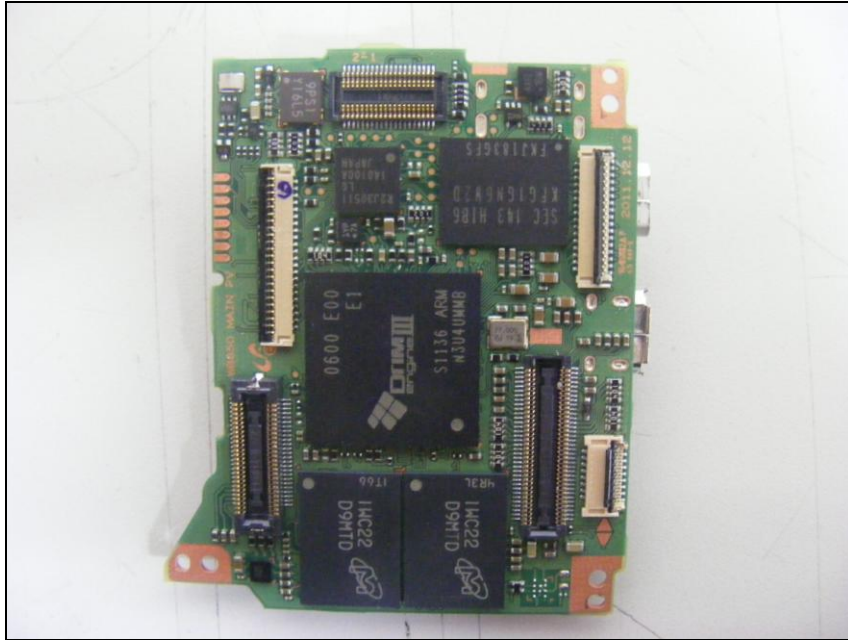


Internal photos of EUT

view of EUT



Top view of Main PCB



Bottom view of Main PCB



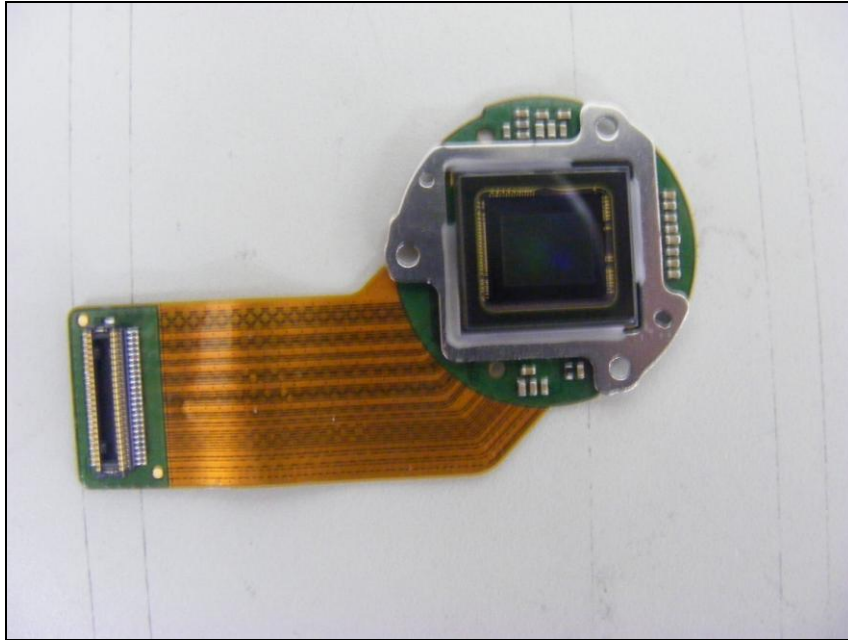
Top view of Lens PCB



Bottom view of Lens PCB



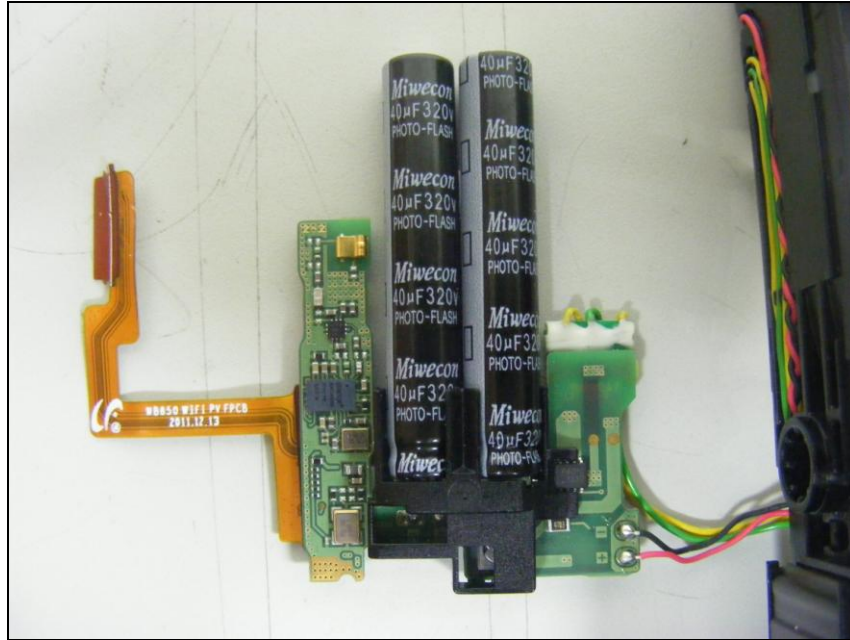
Top view of CMOS PCB



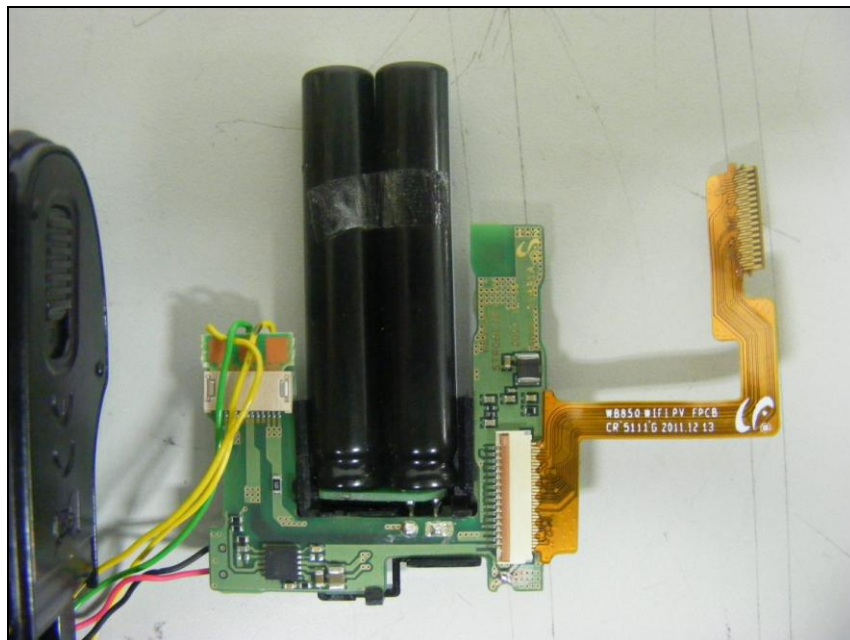
Bottom view of CMOS PCB



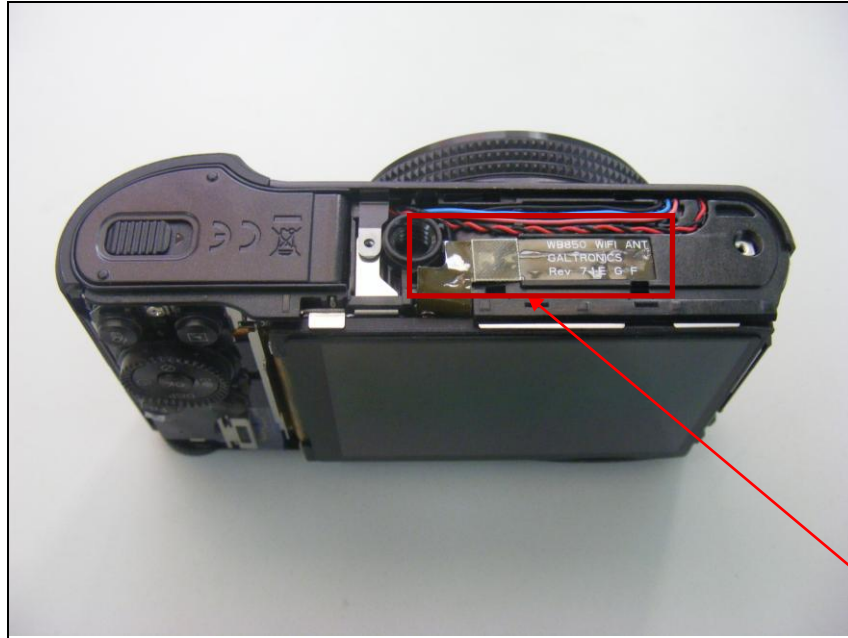
Top view of Power PCB



Bottom view of Power PCB



Top view of Antenna



WLAN
Antenna