

SAR TEST DATA SUMMARY

Ambient TEMPERATURE (°C)	22.0
Relative HUMIDITY (%)	41.1
Atmospheric PRESSURE (kPa)	101.2

Measured Constants:


<u>Mixture Type:</u>	Muscle
<u>Dielectric Constant:</u>	54.2
<u>Conductivity:</u>	1.45

Measurement Results (Wrist SAR w/ Earjack)

FREQUENCY		Modulation	POWER (dBm)	Phantom Position	Antenna Position	SAR (W/kg)
MHz	Ch.					
1851.25	25	CDMA	25.0	Forearm	Fixed	2.6365
ANSI / IEEE C95.1 1992 - SAFETY LIMIT Spatial Peak Uncontrolled Exposure/General Population				Wrist 4.0 W/kg (mW/g) averaged over 10 grams		

NOTES:

1. The test data reported are the worst-case SAR value with the antenna-head position set in a typical configuration.
2. All modes of operation were investigated and the worst-case are reported.
3. Power Measured Conducted EIRP ERP
4. SAR Measurement System SPEAG IDX
5. SAR Configuration Head Body Forearm



 Randy Ortanez
 President



**Fig. B
Wrist SAR Test Setup**

File : c:/idx3/SYSTEM/SARMEAS3/data/Normal/01110111_SAR.VLT
Start : 1-Nov-101 06:40:34 pm End : 1-Nov-101 06:47:06 pm

Radio Type : SAMSUNG
Model Number : SPH-S100
Serial Number : B01E1A7C
Frequency : 1851.25 MHz
Peak Trans. Pwr : 0.320 W
Start Trans. Pwr : 0.320 W
Antenna Type : Helical
Antenna Posn. : Internal
Phantom Type : Forearm
Phantom Posn. : Wrist
Scan Type : SAR 10g
Probe Name : PCTEST
Field Type : E Field
Orientation : 0 Degrees

Mixture Type = Muscle
Mixture Dielectric Constant = 54.200
Mixture Conductivity = 1.450

Comment :
SAMSUNG PCS-MODE PHONE
CH 0025 Conducted 25.0 dBm
WRIST SAR

Robot : PCTEST

Probe Offset = 0.20 cm
Sensor Factor = 0.0108
Conversion Factor = 0.496

PCTEST Amplifier Channel Settings : 0.309 0.361 0.421

Max Location : X = 1.000, Y = -1.000, Z = 0.000 (cm) Value = 75.313

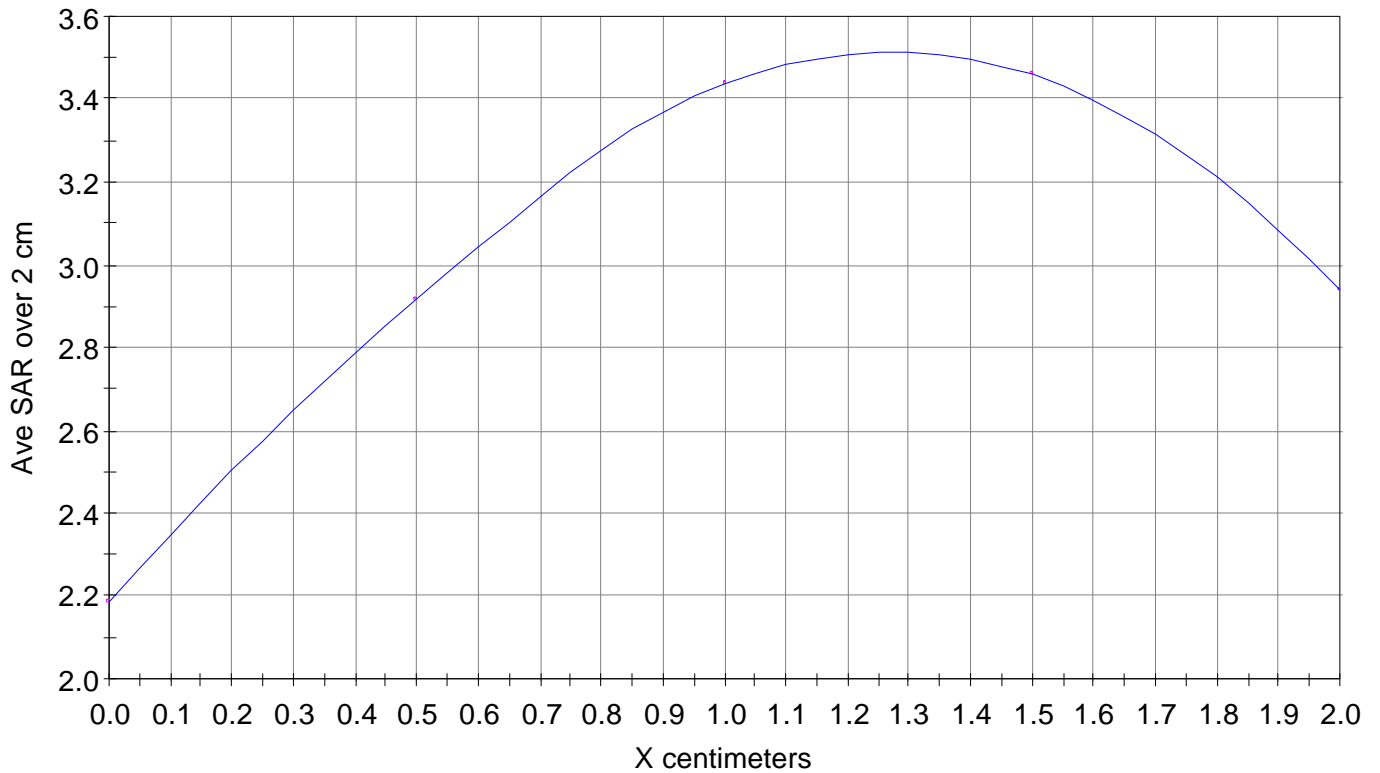
Ave. SAR over 10 g (mW/g) = 2.4047

X-Z Plane Slice Y=-1.000

File : 01110111_SAR

Start : 1-Nov-101 06:40:34 pm End : 1-Nov-101 06:47:06 pm

SAMSUNG/SPH-S100/B01E1A7C;1851.25MHz;W;Helical/Internal;
Forearm/Wrist;SAR 10g;PCTEST/E Field/0 DegreesMuscle/54.200/1.450

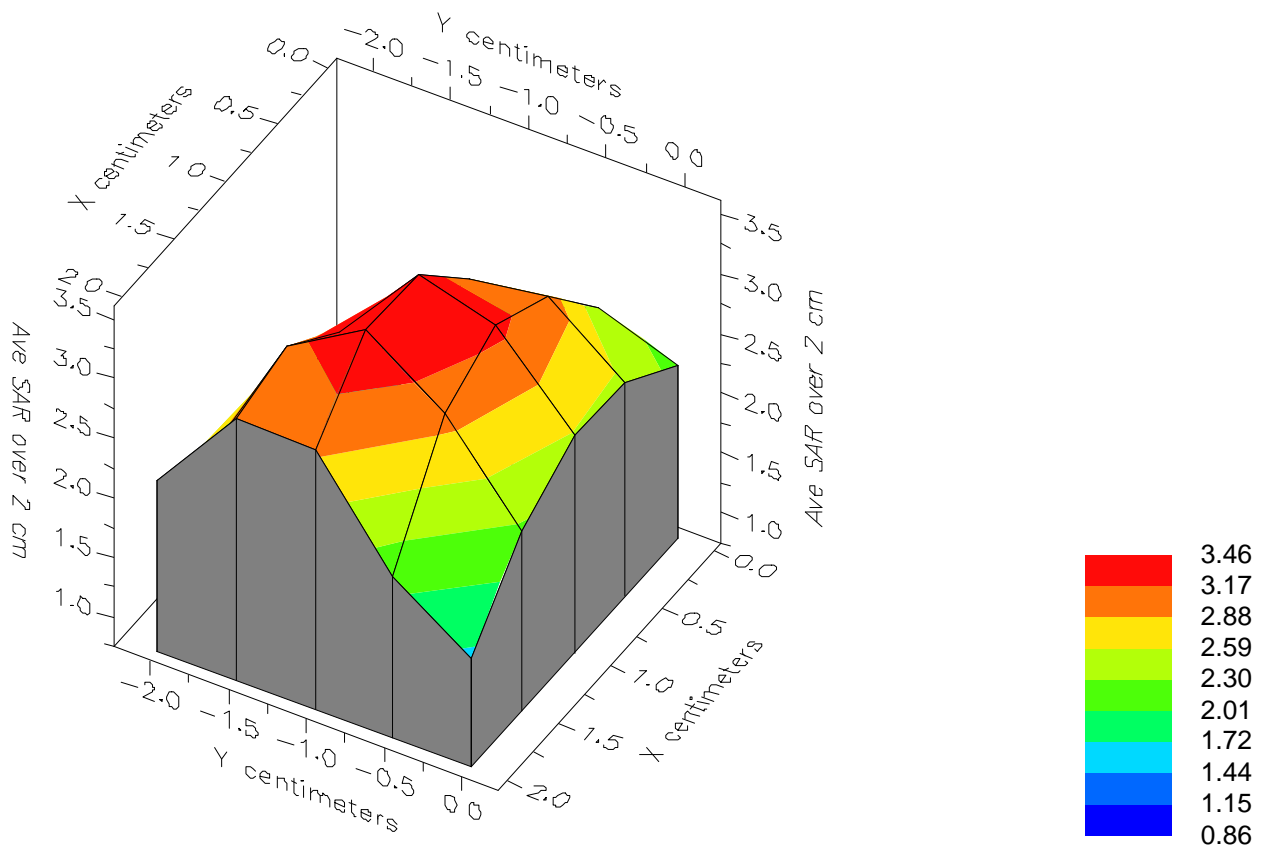


File : 01110111_SAR

Start : 1-Nov-101 06:40:34 pm End : 1-Nov-101 06:47:06 pm

SAMSUNG/SPH-S100/B01E1A7C;1851.25MHz;W;Helical/Internal;

Forearm/Wrist;SAR 10g;PCTEST/E Field/0 DegreesMuscle/54.200/1.450



File : 01110111_SAR

Start : 1-Nov-101 06:40:34 pm End : 1-Nov-101 06:47:06 pm

SAMSUNG/SPH-S100/B01E1A7C;1851.25MHz;W;Helical/Internal;
Forearm/Wrist;SAR 10g;PCTEST/E Field/0 DegreesMuscle/54.200/1.450

