

Peak SAR Location

PCS Head SAR



File : c:/idx3/SYSTEM/SARMEAS3/data/Normal/00091501_ZOOM.VLT
Start : 15-Sep-100 10:38:16 am End : 15-Sep-100 10:49:45 am

Radio Type : SAMSUNG
Model Number : SPH-S100
Serial Number : B01E1A7C
Frequency : 1851.25 MHz
Peak Trans. Pwr : 0.320 W
Start Trans. Pwr: 0.320 W
Antenna Type : Helical
Antenna Posn. : Internal
Phantom Type : Head
Phantom Posn. : Face
Scan Type : ZOOM/SAR
Probe Name : PCTEST
Field Type : E Field
Orientation : 0 Degrees

Mixture Type = Brain
Mixture Dielectric Constant = 41.300
Mixture Conductivity = 1.650

Comment :
SAMSUNG PCS MODE WATCH PHONE
CHAN 0025 Conducted 25.0 dB
HEAD SAR

Robot : PCTEST

Probe Offset = 0.25 cm
Sensor Factor = 0.0108
Conversion Factor = 1.201

PCTEST Amplifier Channel Settings : 0.245 0.231 0.224

Max Location : X = -1.500, Y = -0.250, Z = 0.000 (cm) Value = 8.805

Measured Values (volts) =
8.066E-003 6.275E-003 4.947E-003 4.090E-003 3.522E-003 3.076E-003
2.704E-003 2.422E-003 2.235E-003 2.010E-003 1.872E-003 1.771E-003
1.797E-003 1.721E-003 1.662E-003 1.639E-003 1.550E-003 1.609E-003
1.619E-003 1.674E-003 1.814E-003

Calc. Voltage @ Surface (Vs) = 0.0103

Voltage @ 1.00 cm (Vt) = 0.0041

Ave. Voltage (Vs+Vt)/2 = 0.0072

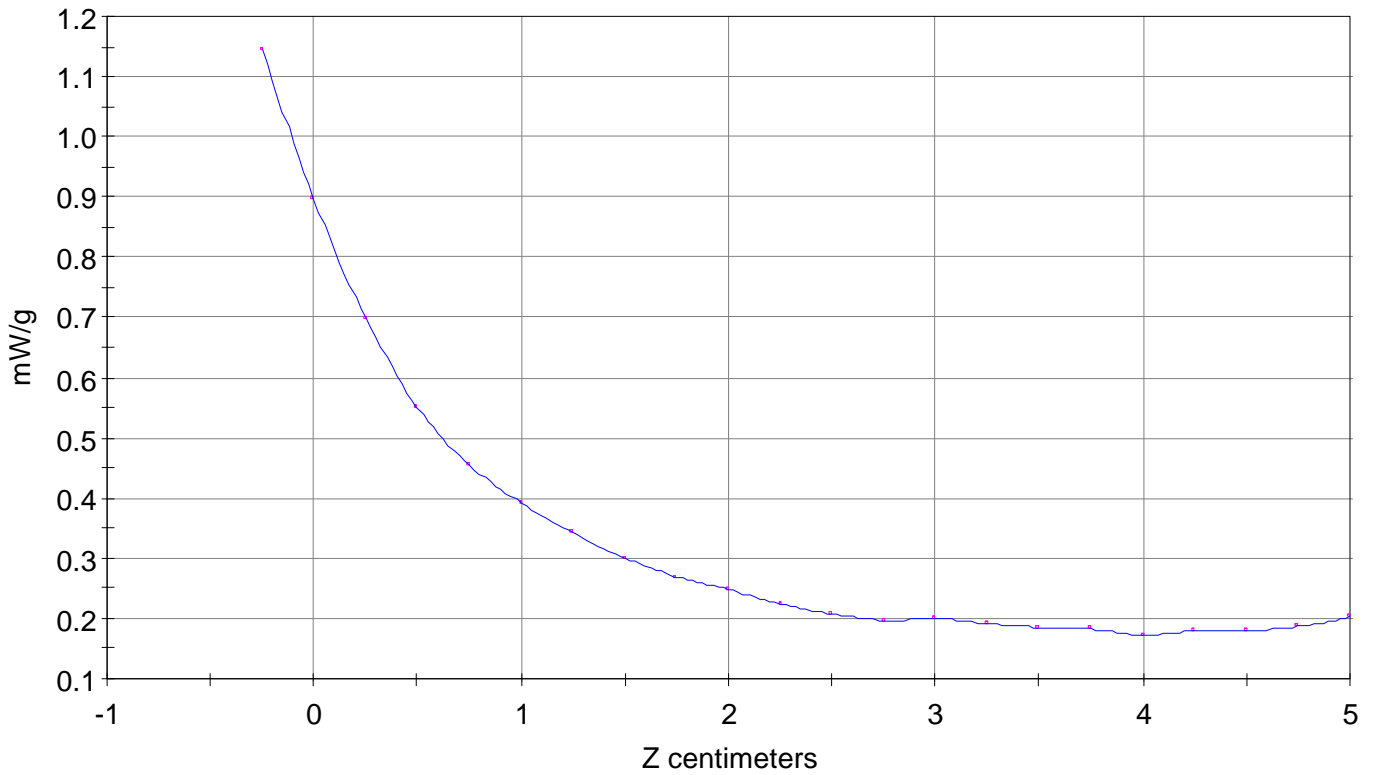
Ave. SAR over 1 g (mW/g) = 0.8001

SAR Scan

File : 00091501_ZOOM

Start : 15-Sep-100 10:38:16 am End : 15-Sep-100 10:49:45 am

SAMSUNG/SPH-S100/B01E1A7C;1851.25MHz;W;Helical/Internal;
Head/Face;ZOOM/SAR;PCTEST/E Field/0 DegreesBrain/41.300/1.650

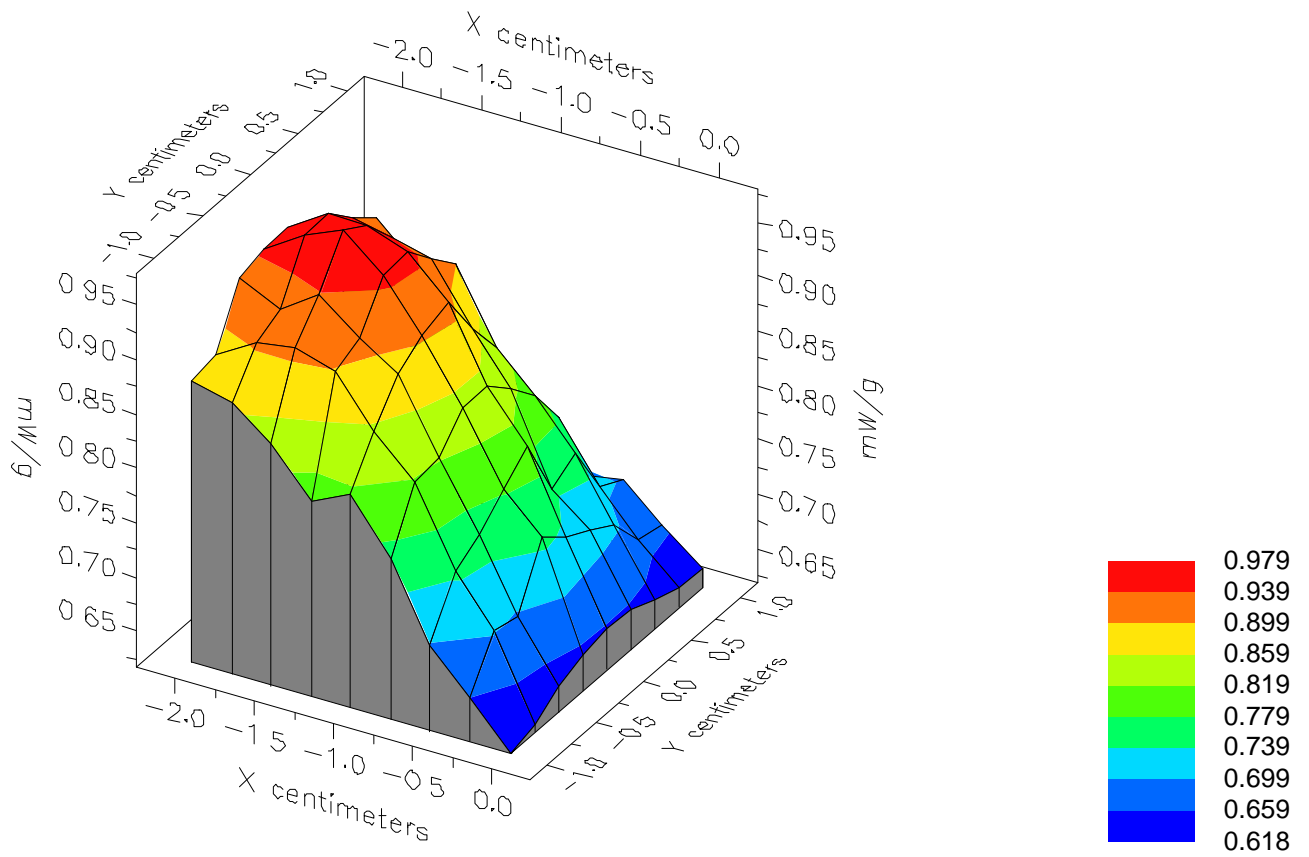


File : 00091501_ZOOM

Start : 15-Sep-100 10:38:16 am End : 15-Sep-100 10:49:45 am

SAMSUNG/SPH-S100/B01E1A7C;1851.25MHz;W;Helical/Internal;

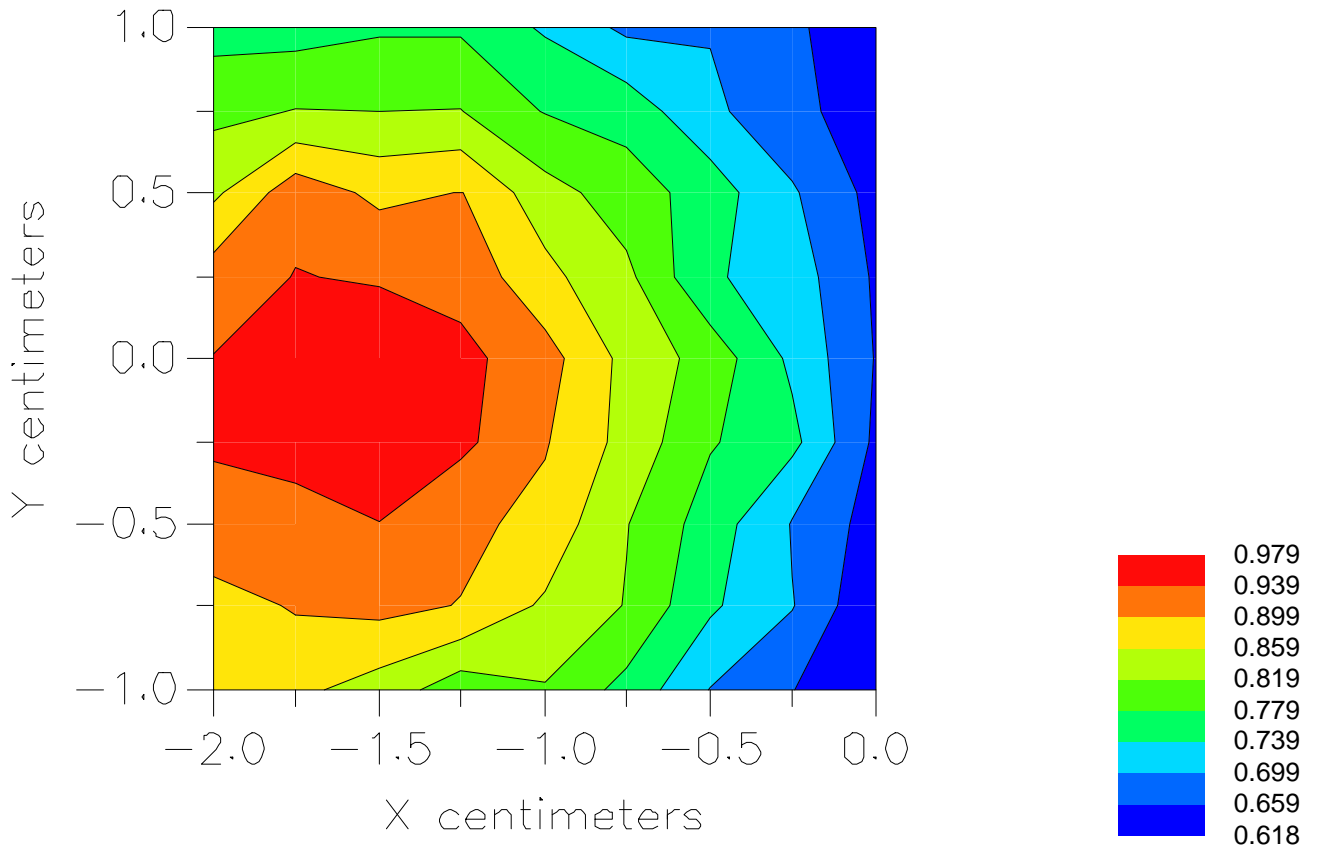
Head/Face;ZOOM/SAR;PCTEST/E Field/0 DegreesBrain/41.300/1.650



File : 00091501_ZOOM

Start : 15-Sep-100 10:38:16 am End : 15-Sep-100 10:49:45 am

SAMSUNG/SPH-S100/B01E1A7C;1851.25MHz;W;Helical/Internal;
Head/Face;ZOOM/SAR;PCTEST/E Field/0 DegreesBrain/41.300/1.650



File : c:/idx3/SYSTEM/SARMEAS3/data/Normal/00091502_ZOOM.VLT
Start : 15-Sep-100 11:05:04 am End : 15-Sep-100 11:13:57 am

Radio Type : SAMSUNG
Model Number : SPH-S100
Serial Number : B01E1A7C
Frequency : 1880.00 MHz
Peak Trans. Pwr : 0.320 W
Start Trans. Pwr : 0.320 W
Antenna Type : Helical
Antenna Posn. : Internal
Phantom Type : Head
Phantom Posn. : Left Ear
Scan Type : ZOOM/SAR
Probe Name : PCTEST
Field Type : E Field
Orientation : 0 Degrees

Mixture Type = Brain
Mixture Dielectric Constant = 41.300
Mixture Conductivity = 1.650

Comment :
SAMSUNG PCS MODE WATCH PHONE
CHAN 0600 Conducted 25.0 dB
HEAD SAR

Robot : PCTEST

Probe Offset = 0.25 cm
Sensor Factor = 0.0108
Conversion Factor = 1.201

PCTEST Amplifier Channel Settings : 0.245 0.231 0.224

Max Location : X = -1.750, Y = 0.000, Z = 0.000 (cm) Value = 4.665

Measured Values (volts) =
4.274E-003 3.376E-003 2.893E-003 2.486E-003 2.145E-003 1.885E-003
1.759E-003 1.662E-003 1.575E-003 1.481E-003 1.506E-003 1.483E-003
1.504E-003 1.542E-003 1.508E-003 1.478E-003 1.455E-003 1.461E-003
1.527E-003 1.596E-003 1.695E-003

Calc. Voltage @ Surface (Vs) = 0.0052

Voltage @ 1.00 cm (Vt) = 0.0025

Ave. Voltage (Vs+Vt)/2 = 0.0038

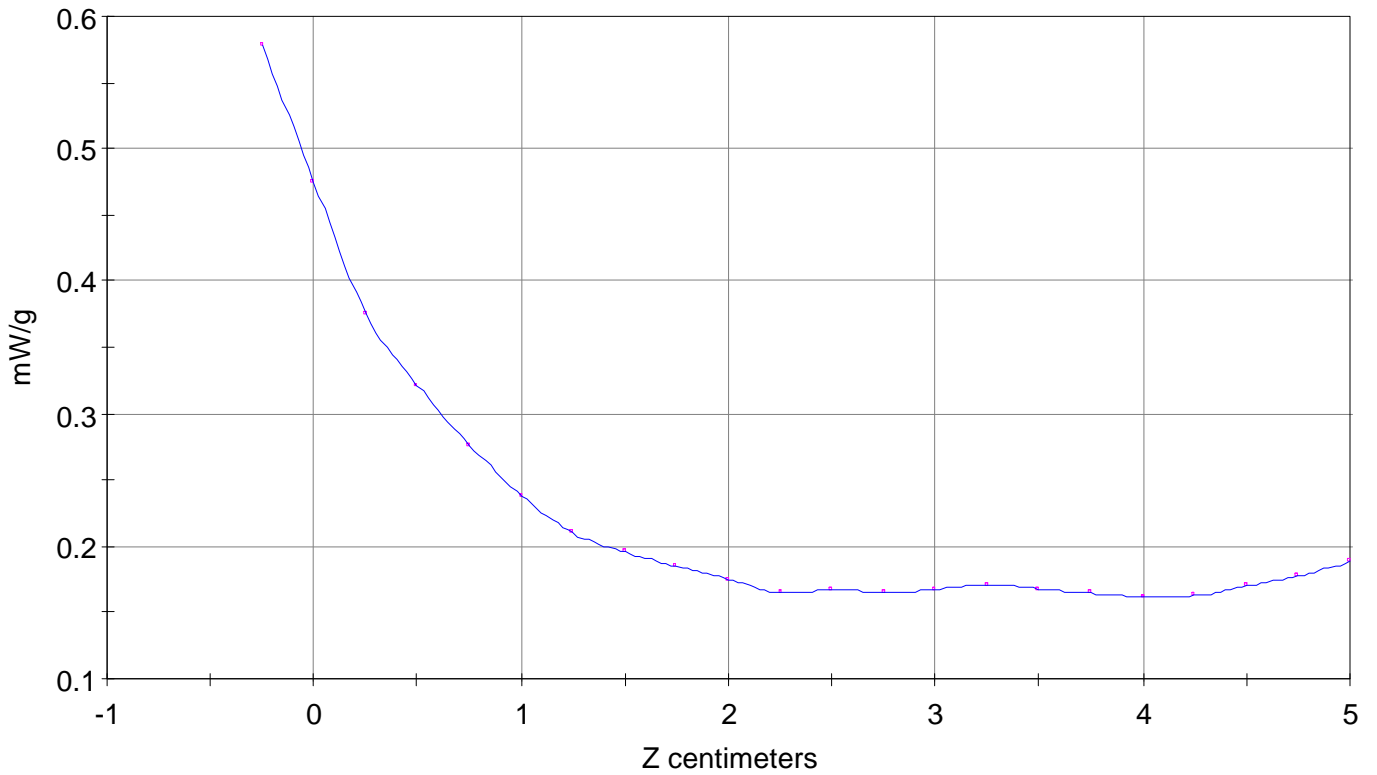
Ave. SAR over 1 g (mW/g) = 0.4273

SAR Scan

File : 00091502_ZOOM

Start : 15-Sep-100 11:05:04 am End : 15-Sep-100 11:13:57 am

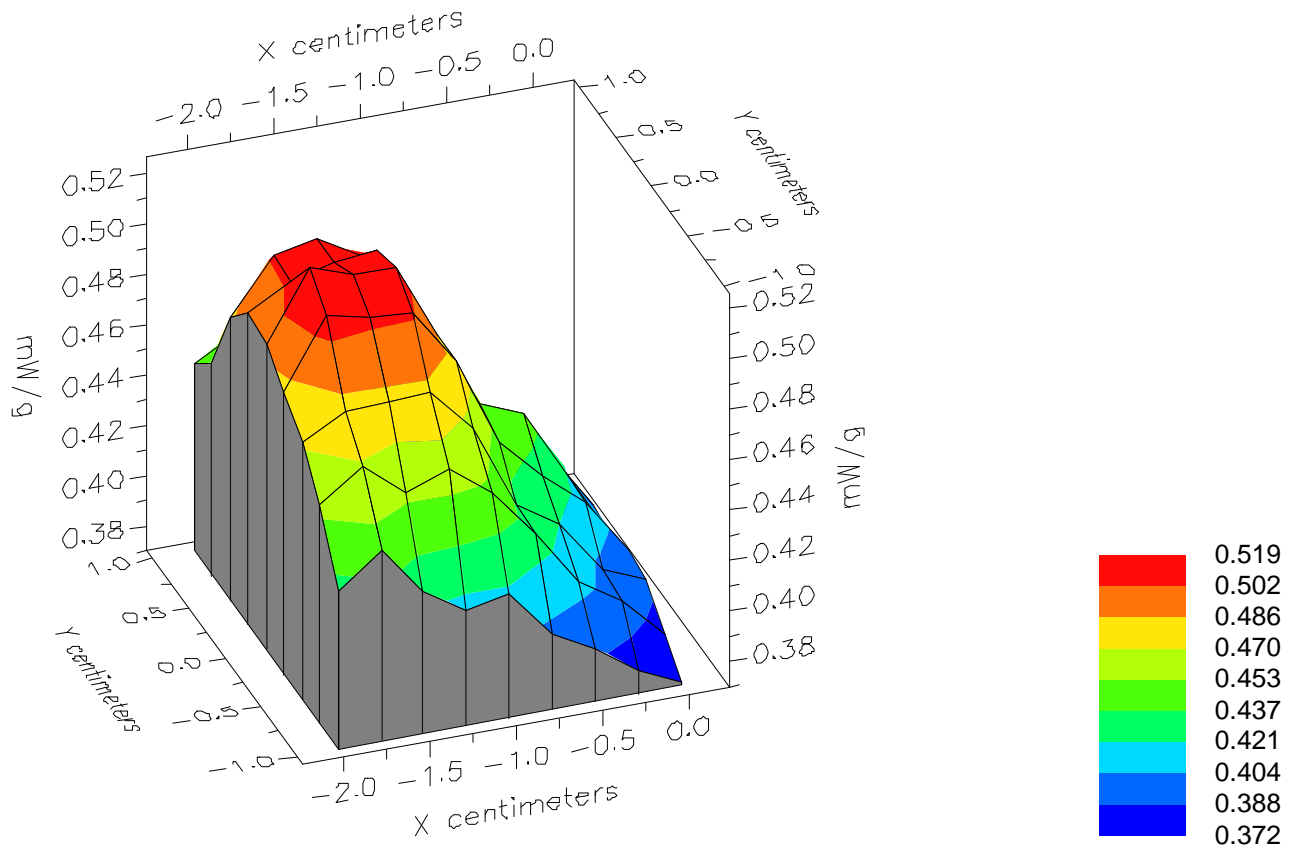
SAMSUNG/SPH-S100/B01E1A7C;1880.00MHz;W;Helical/Internal;
Head/Left Ear;ZOOM/SAR;PCTEST/E Field/0 DegreesBrain/41.300/1.650



File : 00091502_ZOOM

Start : 15-Sep-100 11:05:04 am End : 15-Sep-100 11:13:57 am

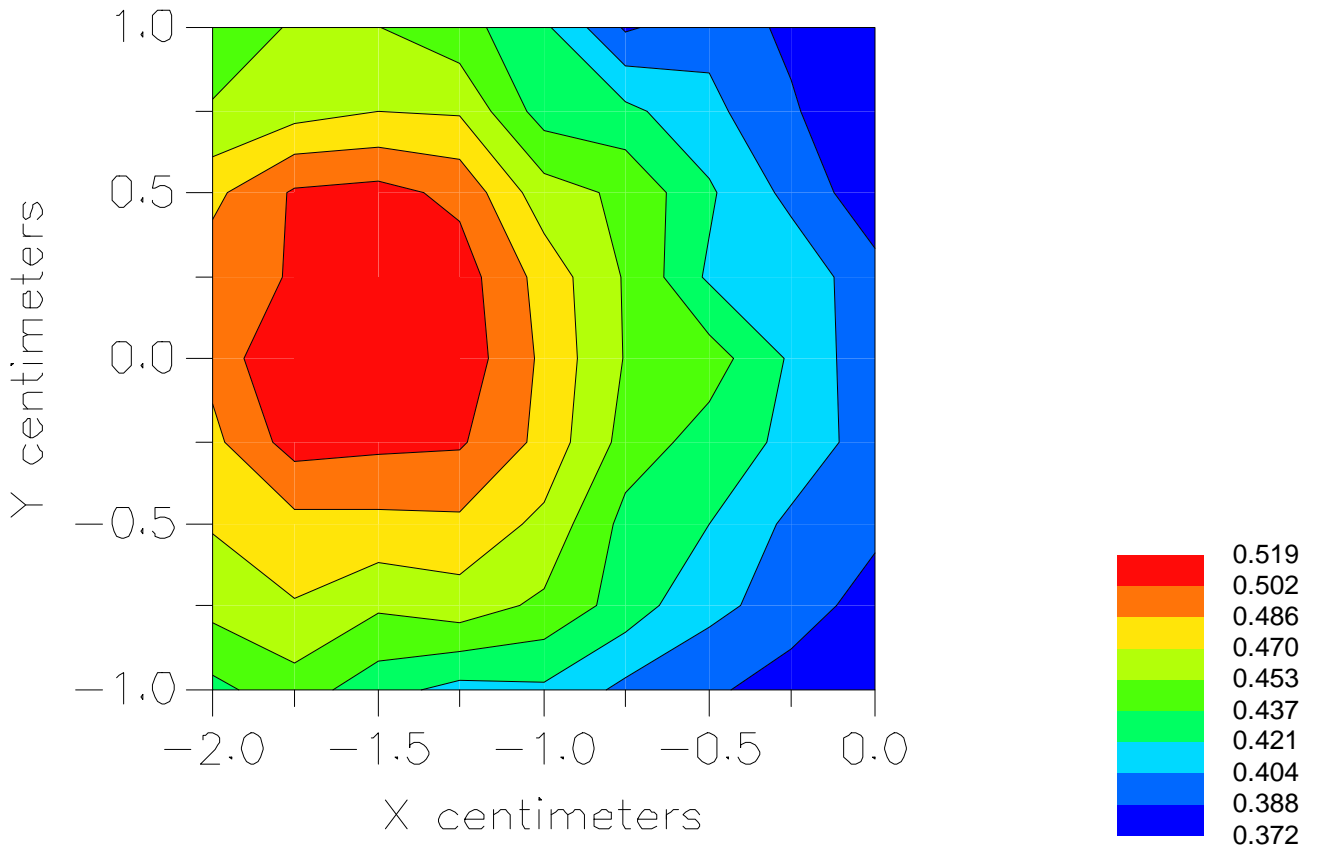
SAMSUNG/SPH-S100/B01E1A7C;1880.00MHz;W;Helical/Internal;
Head/Left Ear;ZOOM/SAR;PCTEST/E Field/0 DegreesBrain/41.300/1.650



File : 00091502_ZOOM

Start : 15-Sep-100 11:05:04 am End : 15-Sep-100 11:13:57 am

SAMSUNG/SPH-S100/B01E1A7C;1880.00MHz;W;Helical/Internal;
Head/Left Ear;ZOOM/SAR;PCTEST/E Field/0 DegreesBrain/41.300/1.650



File : c:/idx3/SYSTEM/SARMEAS3/data/Normal/00091505_ZOOM.VLT
Start : 15-Sep-100 12:10:16 pm End : 15-Sep-100 12:19:10 pm

Radio Type : SAMSUNG
Model Number : SPH-S100
Serial Number : B01E1A7C
Frequency : 1908.75 MHz
Peak Trans. Pwr : 0.320 W
Start Trans. Pwr : 0.320 W
Antenna Type : Helical
Antenna Posn. : Internal
Phantom Type : Head
Phantom Posn. : Face
Scan Type : ZOOM/SAR
Probe Name : PCTEST
Field Type : E Field
Orientation : 0 Degrees

Mixture Type = Brain
Mixture Dielectric Constant = 41.300
Mixture Conductivity = 1.650

Comment :
SAMSUNG PCS MODE WATCH PHONE
CHAN 1175 Conducted 25.0 dB
HEAD SAR

Robot : PCTEST

Probe Offset = 0.25 cm
Sensor Factor = 0.0108
Conversion Factor = 1.201

PCTEST Amplifier Channel Settings : 0.245 0.231 0.224

Max Location : X = -1.750, Y = 0.000, Z = 0.000 (cm) Value = 6.666

Measured Values (volts) =
6.664E-003 5.354E-003 4.288E-003 3.666E-003 3.091E-003 2.677E-003
2.404E-003 2.173E-003 2.115E-003 1.957E-003 1.784E-003 1.712E-003
1.667E-003 1.728E-003 1.675E-003 1.637E-003 1.615E-003 1.625E-003
1.670E-003 1.712E-003 1.818E-003

Calc. Voltage @ Surface (Vs) = 0.0083

Voltage @ 1.00 cm (Vt) = 0.0037

Ave. Voltage (Vs+Vt)/2 = 0.0060

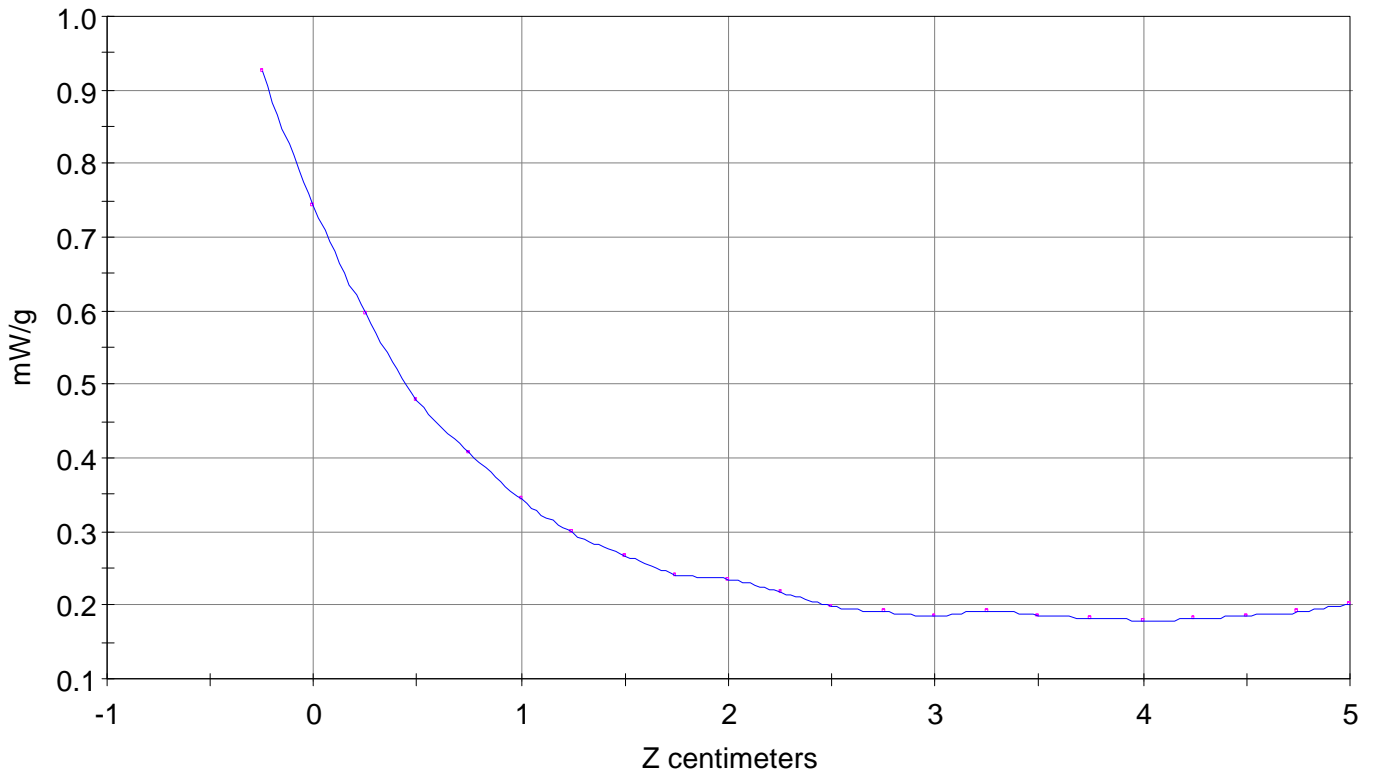
Ave. SAR over 1 g (mW/g) = 0.6657

SAR Scan

File : 00091505_ZOOM

Start : 15-Sep-100 12:10:16 pm End : 15-Sep-100 12:19:10 pm

SAMSUNG/SPH-S100/B01E1A7C;1908.75MHz;W;Helical/Internal;
Head/Face;ZOOM/SAR;PCTEST/E Field/0 DegreesBrain/41.300/1.650

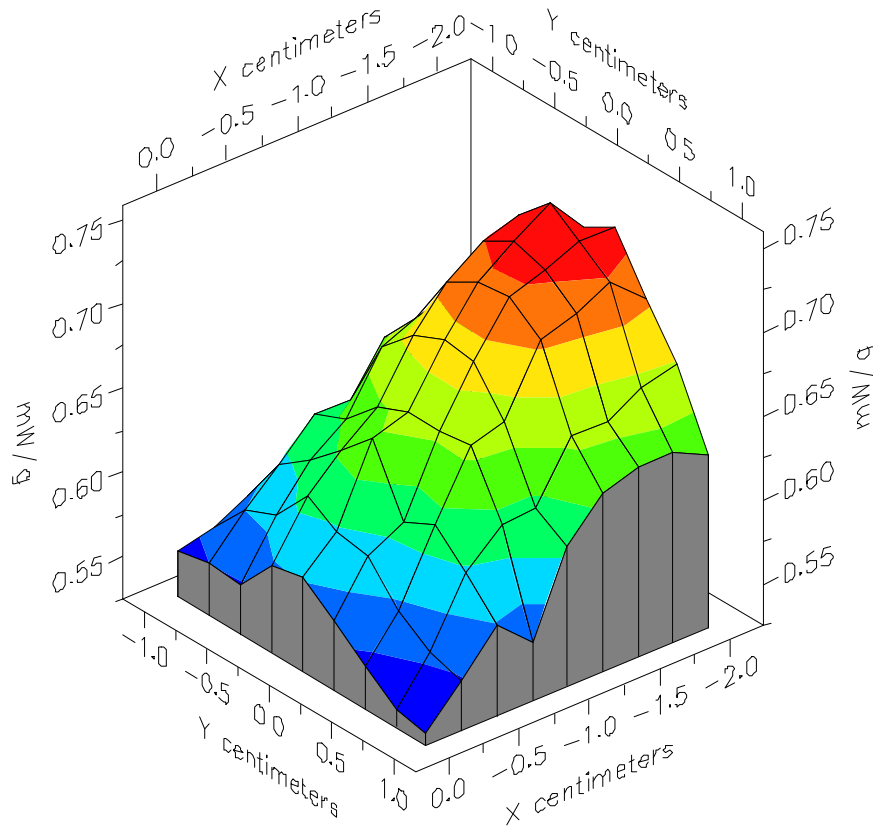


File : 00091505_ZOOM

Start : 15-Sep-100 12:10:16 pm End : 15-Sep-100 12:19:10 pm

SAMSUNG/SPH-S100/B01E1A7C;1908.75MHz;W;Helical/Internal;

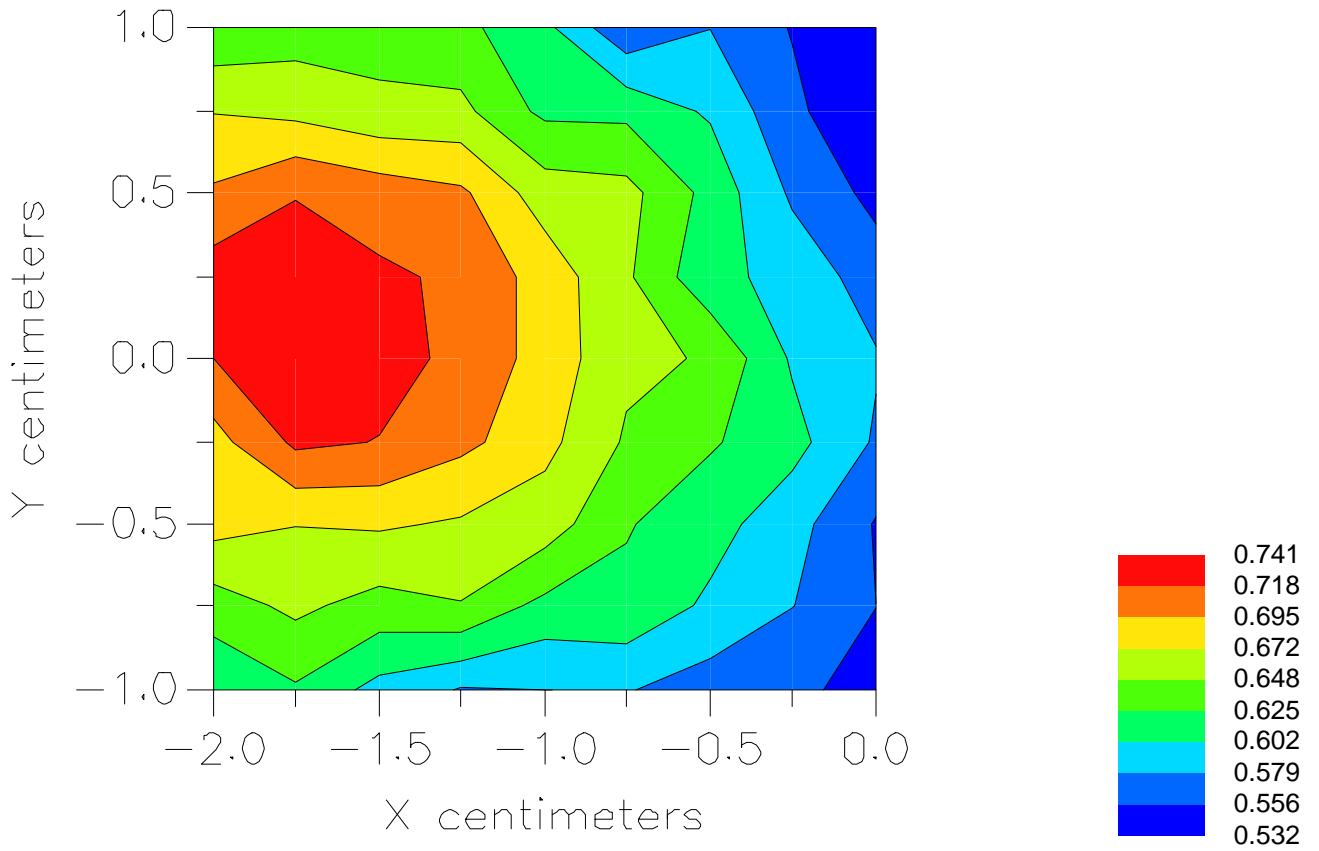
Head/Face;ZOOM/SAR;PCTEST/E Field/0 DegreesBrain/41.300/1.650



File : 00091505_ZOOM

Start : 15-Sep-100 12:10:16 pm End : 15-Sep-100 12:19:10 pm

SAMSUNG/SPH-S100/B01E1A7C;1908.75MHz;W;Helical/Internal;
Head/Face;ZOOM/SAR;PCTEST/E Field/0 DegreesBrain/41.300/1.650



File : c:/idx3/SYSTEM/SARMEAS3/data/Normal/00091501_ZOOM.VLT
Start : 15-Sep-100 10:38:16 am End : 15-Sep-100 10:49:45 am

Radio Type : SAMSUNG
Model Number : SPH-S100
Serial Number : B01E1A7C
Frequency : 1851.25 MHz
Peak Trans. Pwr : 0.320 W
Start Trans. Pwr: 0.320 W
Antenna Type : Helical
Antenna Posn. : Internal
Phantom Type : Head
Phantom Posn. : Face
Scan Type : ZOOM/SAR
Probe Name : PCTEST
Field Type : E Field
Orientation : 0 Degrees

Mixture Type = Brain
Mixture Dielectric Constant = 41.300
Mixture Conductivity = 1.650

Comment :
SAMSUNG PCS MODE WATCH PHONE
CHAN 0025 Conducted 25.0 dB
HEAD SAR

Robot : PCTEST

Probe Offset = 0.25 cm
Sensor Factor = 0.0108
Conversion Factor = 1.201

PCTEST Amplifier Channel Settings : 0.245 0.231 0.224

Max Location : X = -1.500, Y = -0.250, Z = 0.000 (cm) Value = 8.805

Measured Values (volts) =
8.066E-003 6.275E-003 4.947E-003 4.090E-003 3.522E-003 3.076E-003
2.704E-003 2.422E-003 2.235E-003 2.010E-003 1.872E-003 1.771E-003
1.797E-003 1.721E-003 1.662E-003 1.639E-003 1.550E-003 1.609E-003
1.619E-003 1.674E-003 1.814E-003

Calc. Voltage @ Surface (Vs) = 0.0103

Voltage @ 1.00 cm (Vt) = 0.0041

Ave. Voltage (Vs+Vt)/2 = 0.0072

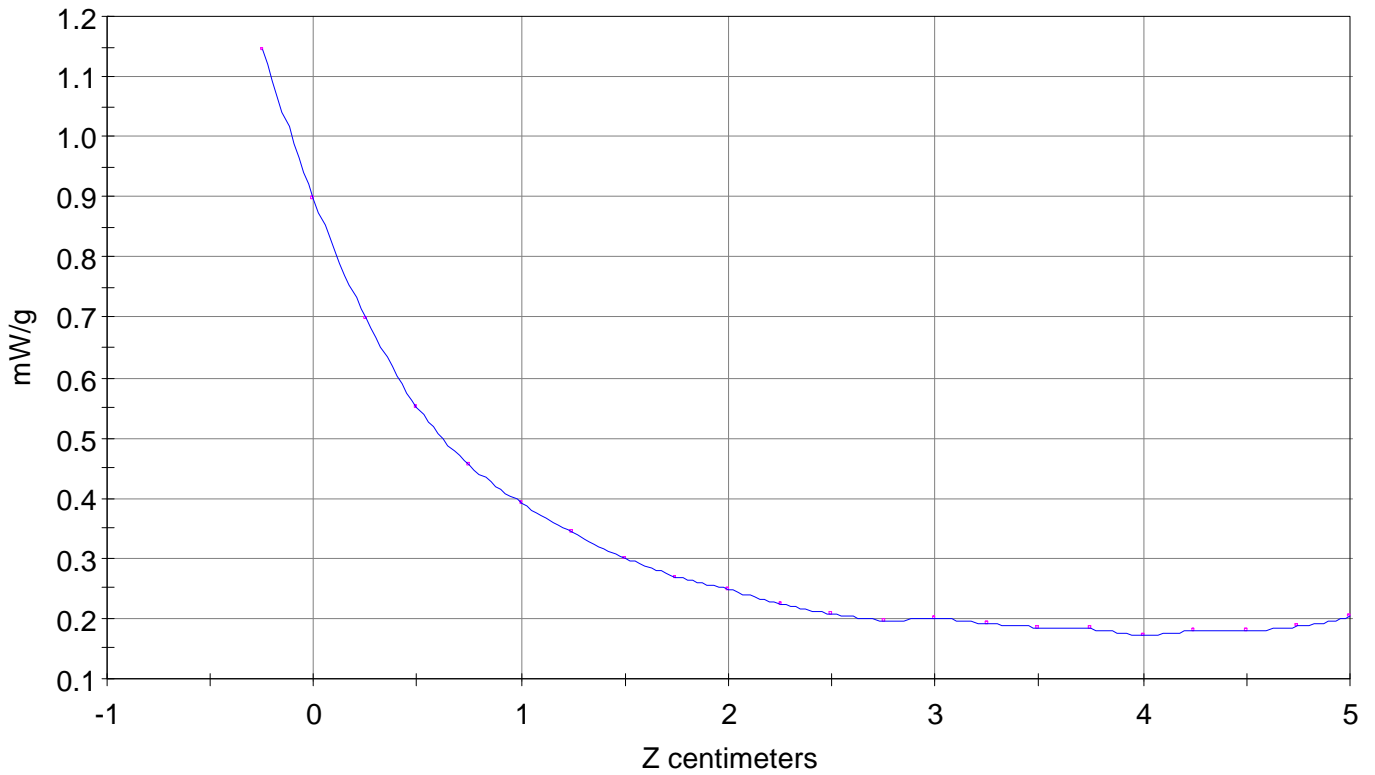
Ave. SAR over 1 g (mW/g) = 0.8001

SAR Scan

File : 00091501_ZOOM

Start : 15-Sep-100 10:38:16 am End : 15-Sep-100 10:49:45 am

SAMSUNG/SPH-S100/B01E1A7C;1851.25MHz;W;Helical/Internal;
Head/Face;ZOOM/SAR;PCTEST/E Field/0 DegreesBrain/41.300/1.650

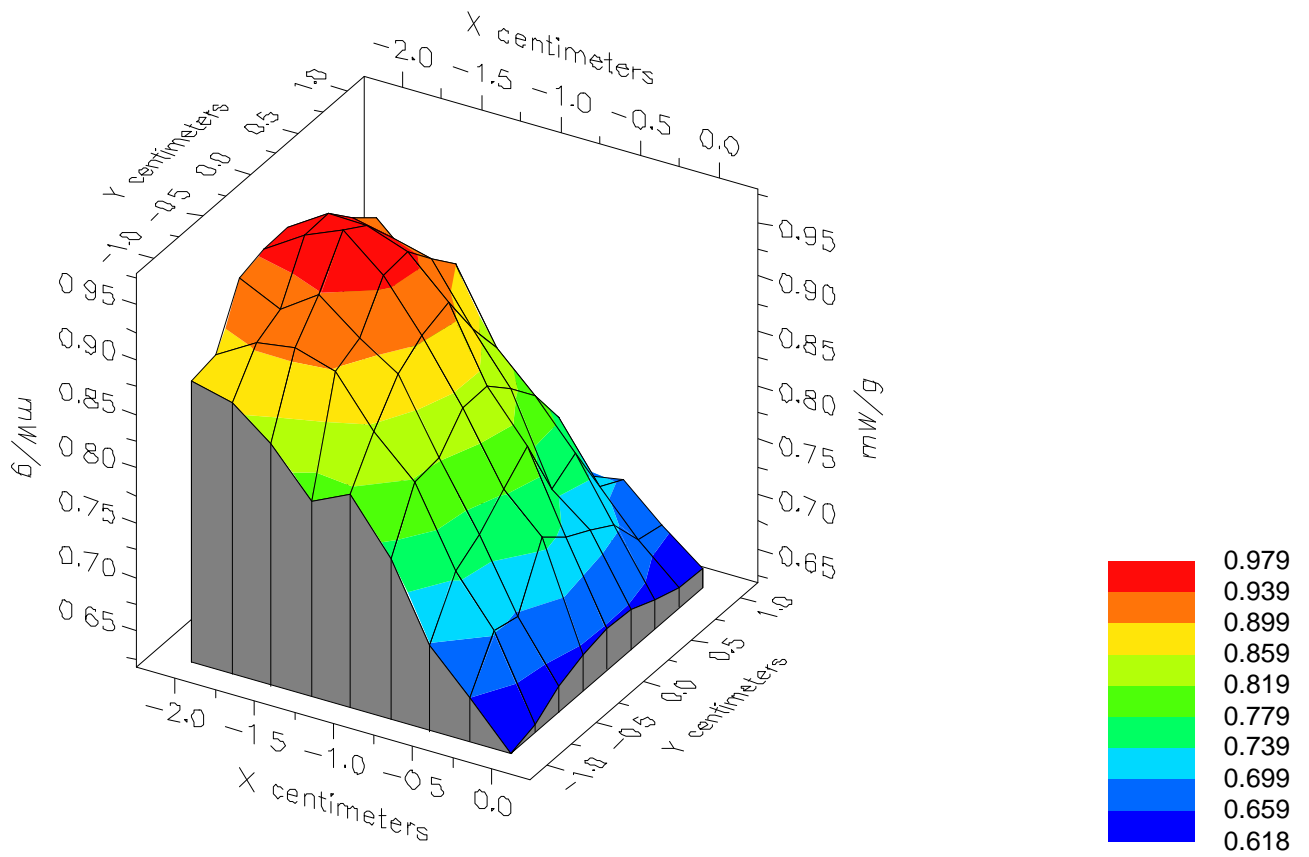


File : 00091501_ZOOM

Start : 15-Sep-100 10:38:16 am End : 15-Sep-100 10:49:45 am

SAMSUNG/SPH-S100/B01E1A7C;1851.25MHz;W;Helical/Internal;

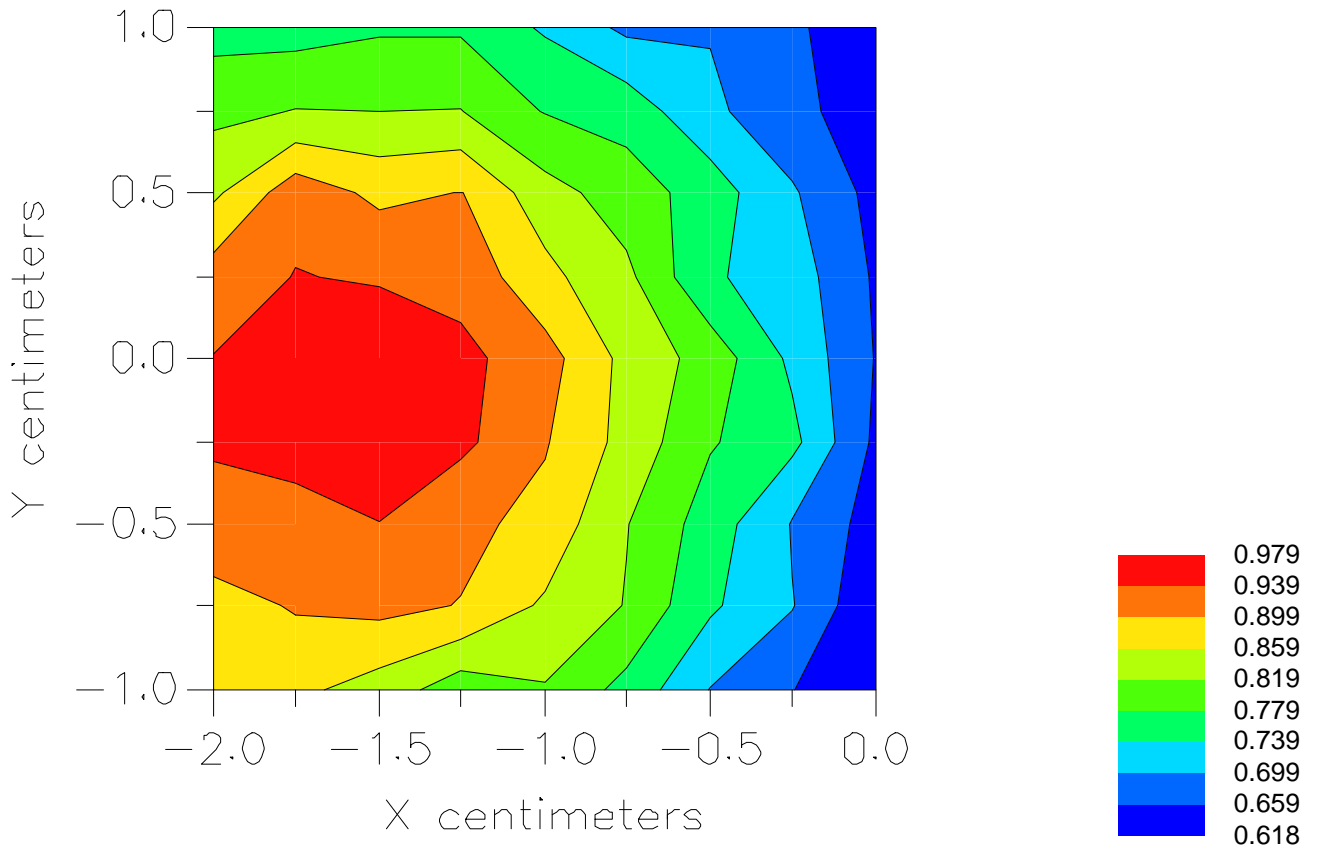
Head/Face;ZOOM/SAR;PCTEST/E Field/0 DegreesBrain/41.300/1.650



File : 00091501_ZOOM

Start : 15-Sep-100 10:38:16 am End : 15-Sep-100 10:49:45 am

SAMSUNG/SPH-S100/B01E1A7C;1851.25MHz;W;Helical/Internal;
Head/Face;ZOOM/SAR;PCTEST/E Field/0 DegreesBrain/41.300/1.650



File : c:/idx3/SYSTEM/SARMEAS3/data/Normal/00091502_ZOOM.VLT
Start : 15-Sep-100 11:05:04 am End : 15-Sep-100 11:13:57 am

Radio Type : SAMSUNG
Model Number : SPH-S100
Serial Number : B01E1A7C
Frequency : 1880.00 MHz
Peak Trans. Pwr : 0.320 W
Start Trans. Pwr: 0.320 W
Antenna Type : Helical
Antenna Posn. : Internal
Phantom Type : Head
Phantom Posn. : Left Ear
Scan Type : ZOOM/SAR
Probe Name : PCTEST
Field Type : E Field
Orientation : 0 Degrees

Mixture Type = Brain
Mixture Dielectric Constant = 41.300
Mixture Conductivity = 1.650

Comment :
SAMSUNG PCS MODE WATCH PHONE
CHAN 0600 Conducted 25.0 dB
HEAD SAR

Robot : PCTEST

Probe Offset = 0.25 cm
Sensor Factor = 0.0108
Conversion Factor = 1.201

PCTEST Amplifier Channel Settings : 0.245 0.231 0.224

Max Location : X = -1.750, Y = 0.000, Z = 0.000 (cm) Value = 4.665

Measured Values (volts) =
4.274E-003 3.376E-003 2.893E-003 2.486E-003 2.145E-003 1.885E-003
1.759E-003 1.662E-003 1.575E-003 1.481E-003 1.506E-003 1.483E-003
1.504E-003 1.542E-003 1.508E-003 1.478E-003 1.455E-003 1.461E-003
1.527E-003 1.596E-003 1.695E-003

Calc. Voltage @ Surface (Vs) = 0.0052

Voltage @ 1.00 cm (Vt) = 0.0025

Ave. Voltage (Vs+Vt)/2 = 0.0038

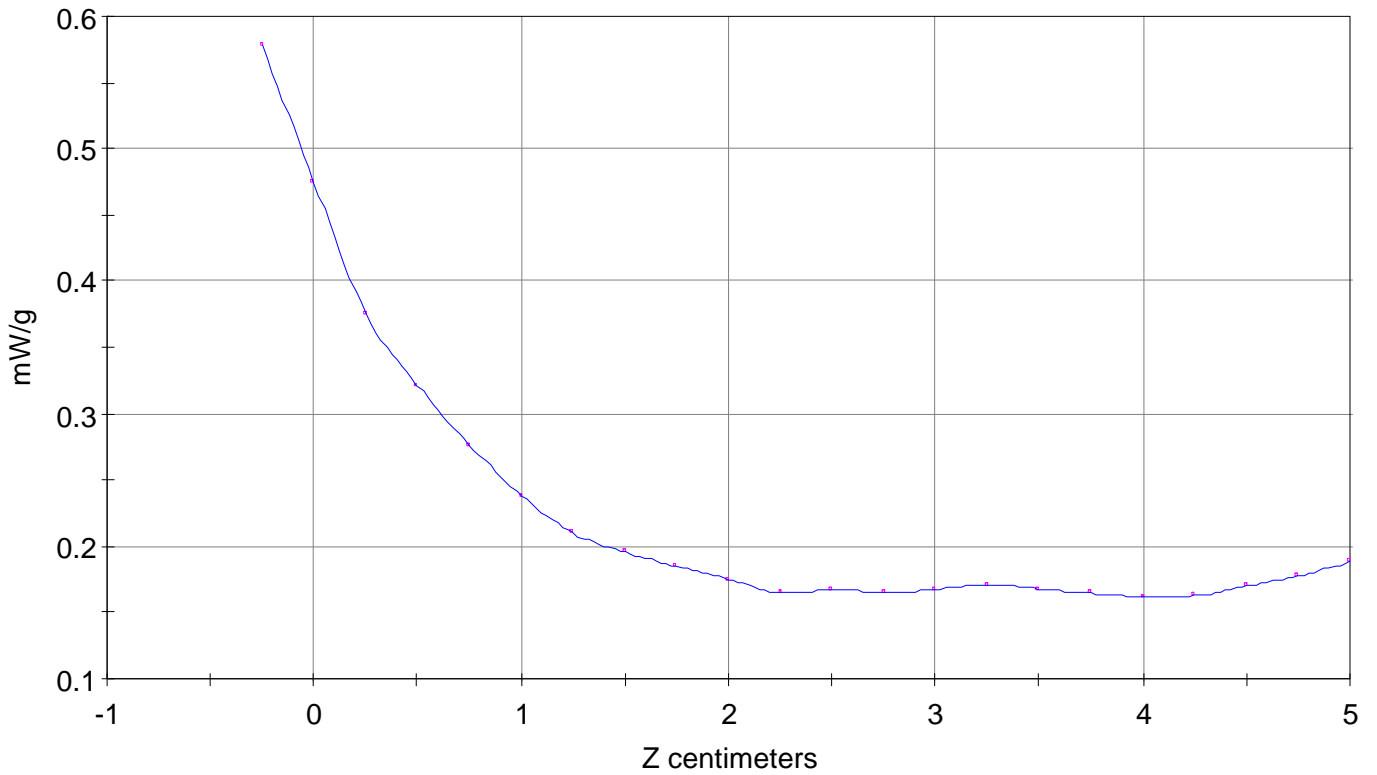
Ave. SAR over 1 g (mW/g) = 0.4273

SAR Scan

File : 00091502_ZOOM

Start : 15-Sep-100 11:05:04 am End : 15-Sep-100 11:13:57 am

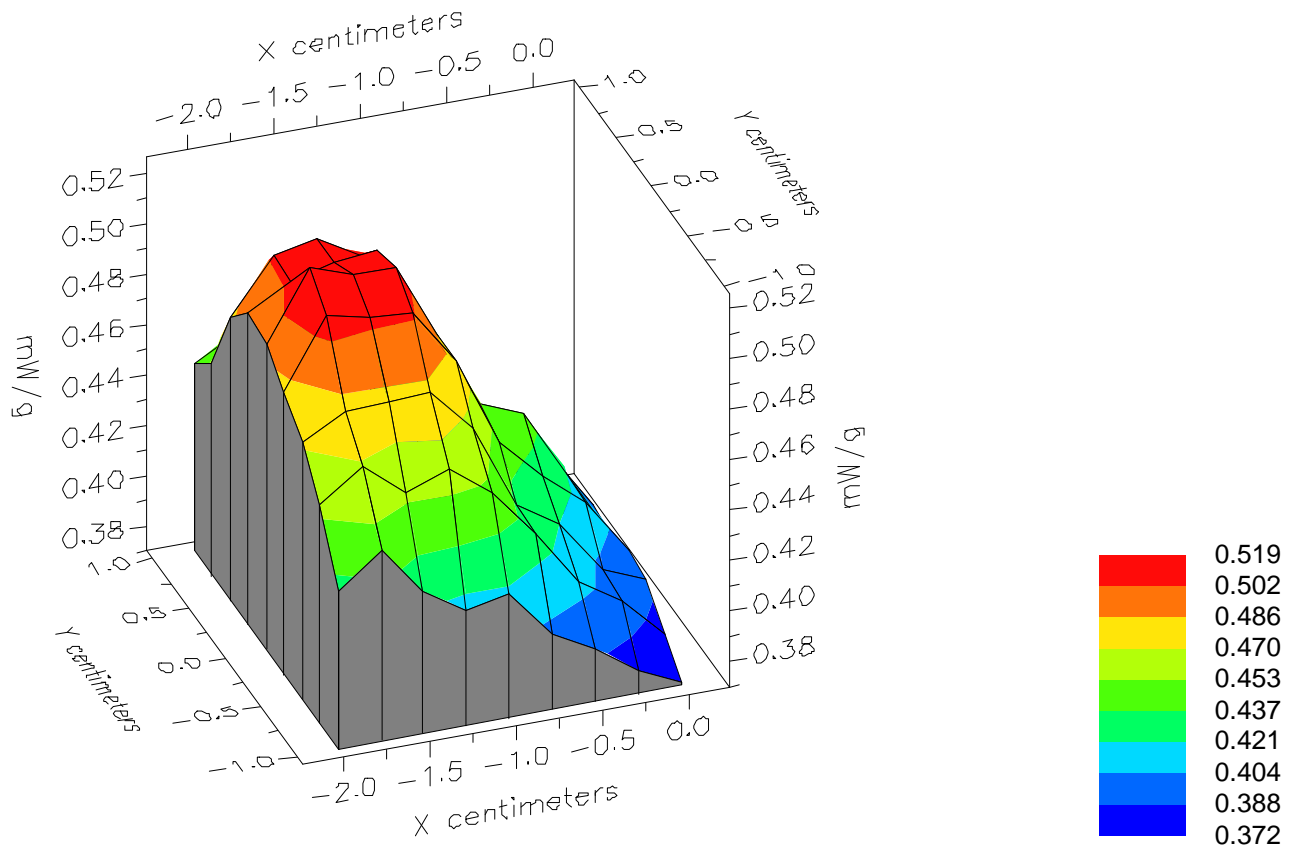
SAMSUNG/SPH-S100/B01E1A7C;1880.00MHz;W;Helical/Internal;
Head/Left Ear;ZOOM/SAR;PCTEST/E Field/0 DegreesBrain/41.300/1.650



File : 00091502_ZOOM

Start : 15-Sep-100 11:05:04 am End : 15-Sep-100 11:13:57 am

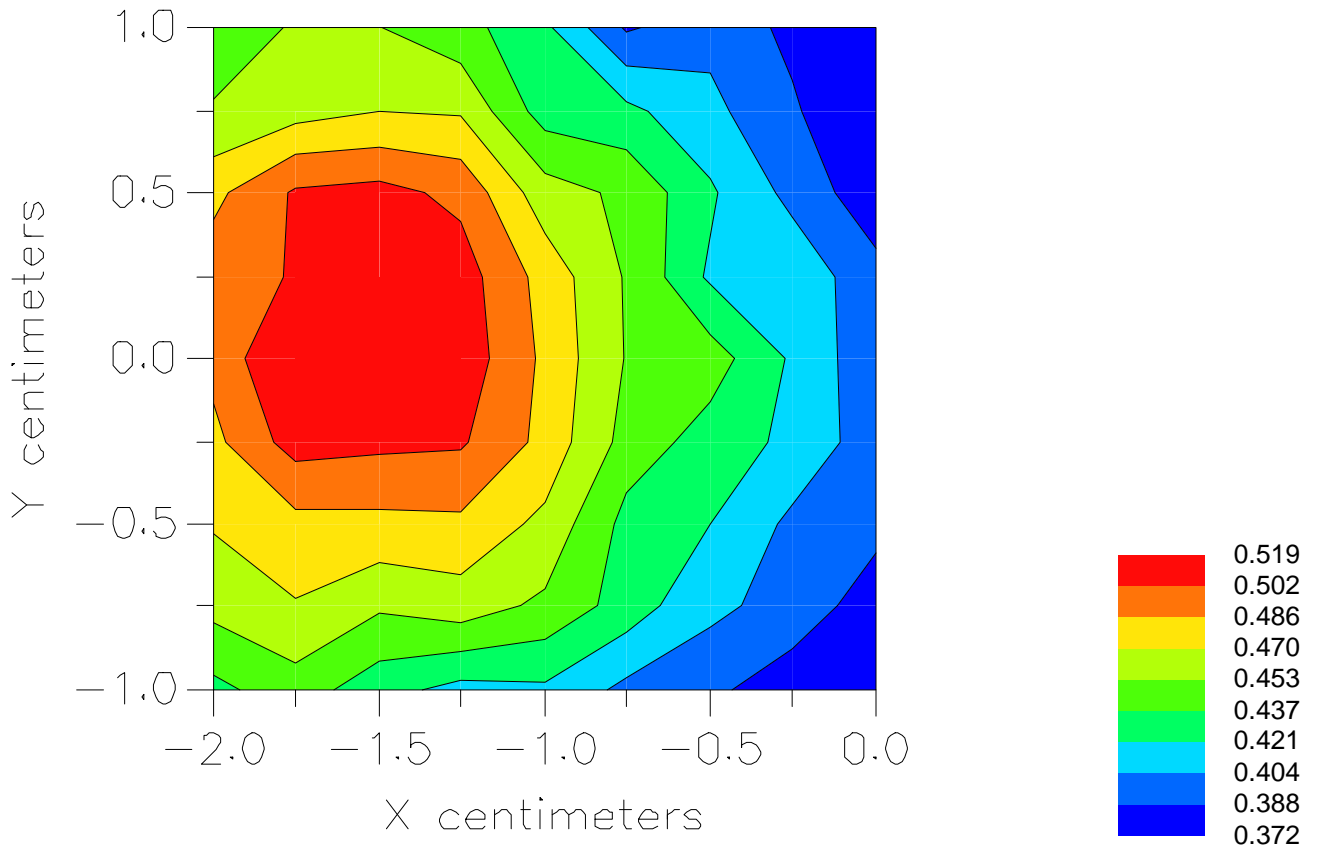
SAMSUNG/SPH-S100/B01E1A7C;1880.00MHz;W;Helical/Internal;
Head/Left Ear;ZOOM/SAR;PCTEST/E Field/0 DegreesBrain/41.300/1.650



File : 00091502_ZOOM

Start : 15-Sep-100 11:05:04 am End : 15-Sep-100 11:13:57 am

SAMSUNG/SPH-S100/B01E1A7C;1880.00MHz;W;Helical/Internal;
Head/Left Ear;ZOOM/SAR;PCTEST/E Field/0 DegreesBrain/41.300/1.650



File : c:/idx3/SYSTEM/SARMEAS3/data/Normal/00091505_ZOOM.VLT
Start : 15-Sep-100 12:10:16 pm End : 15-Sep-100 12:19:10 pm

Radio Type : SAMSUNG
Model Number : SPH-S100
Serial Number : B01E1A7C
Frequency : 1908.75 MHz
Peak Trans. Pwr : 0.320 W
Start Trans. Pwr : 0.320 W
Antenna Type : Helical
Antenna Posn. : Internal
Phantom Type : Head
Phantom Posn. : Face
Scan Type : ZOOM/SAR
Probe Name : PCTEST
Field Type : E Field
Orientation : 0 Degrees

Mixture Type = Brain
Mixture Dielectric Constant = 41.300
Mixture Conductivity = 1.650

Comment :
SAMSUNG PCS MODE WATCH PHONE
CHAN 1175 Conducted 25.0 dB
HEAD SAR

Robot : PCTEST

Probe Offset = 0.25 cm
Sensor Factor = 0.0108
Conversion Factor = 1.201

PCTEST Amplifier Channel Settings : 0.245 0.231 0.224

Max Location : X = -1.750, Y = 0.000, Z = 0.000 (cm) Value = 6.666

Measured Values (volts) =
6.664E-003 5.354E-003 4.288E-003 3.666E-003 3.091E-003 2.677E-003
2.404E-003 2.173E-003 2.115E-003 1.957E-003 1.784E-003 1.712E-003
1.667E-003 1.728E-003 1.675E-003 1.637E-003 1.615E-003 1.625E-003
1.670E-003 1.712E-003 1.818E-003

Calc. Voltage @ Surface (Vs) = 0.0083

Voltage @ 1.00 cm (Vt) = 0.0037

Ave. Voltage (Vs+Vt)/2 = 0.0060

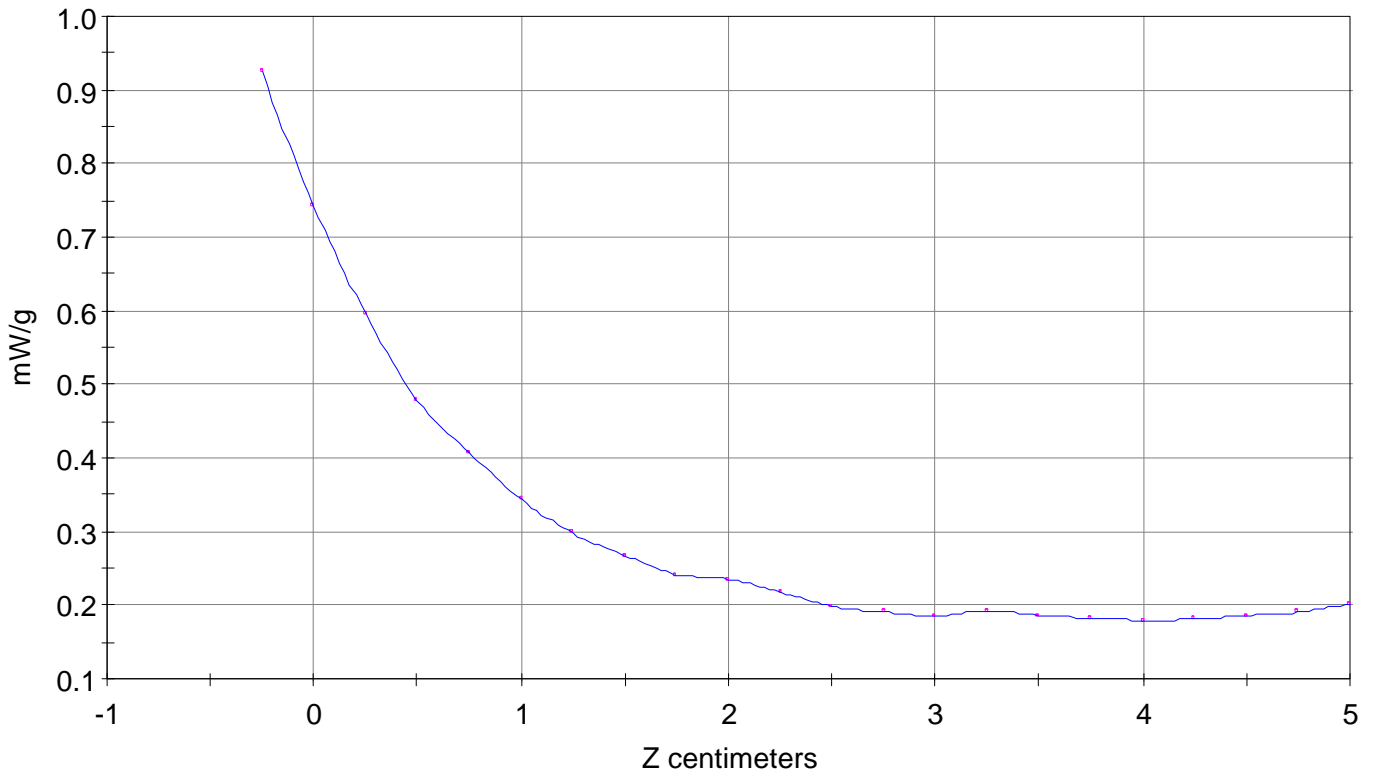
Ave. SAR over 1 g (mW/g) = 0.6657

SAR Scan

File : 00091505_ZOOM

Start : 15-Sep-100 12:10:16 pm End : 15-Sep-100 12:19:10 pm

SAMSUNG/SPH-S100/B01E1A7C;1908.75MHz;W;Helical/Internal;
Head/Face;ZOOM/SAR;PCTEST/E Field/0 DegreesBrain/41.300/1.650

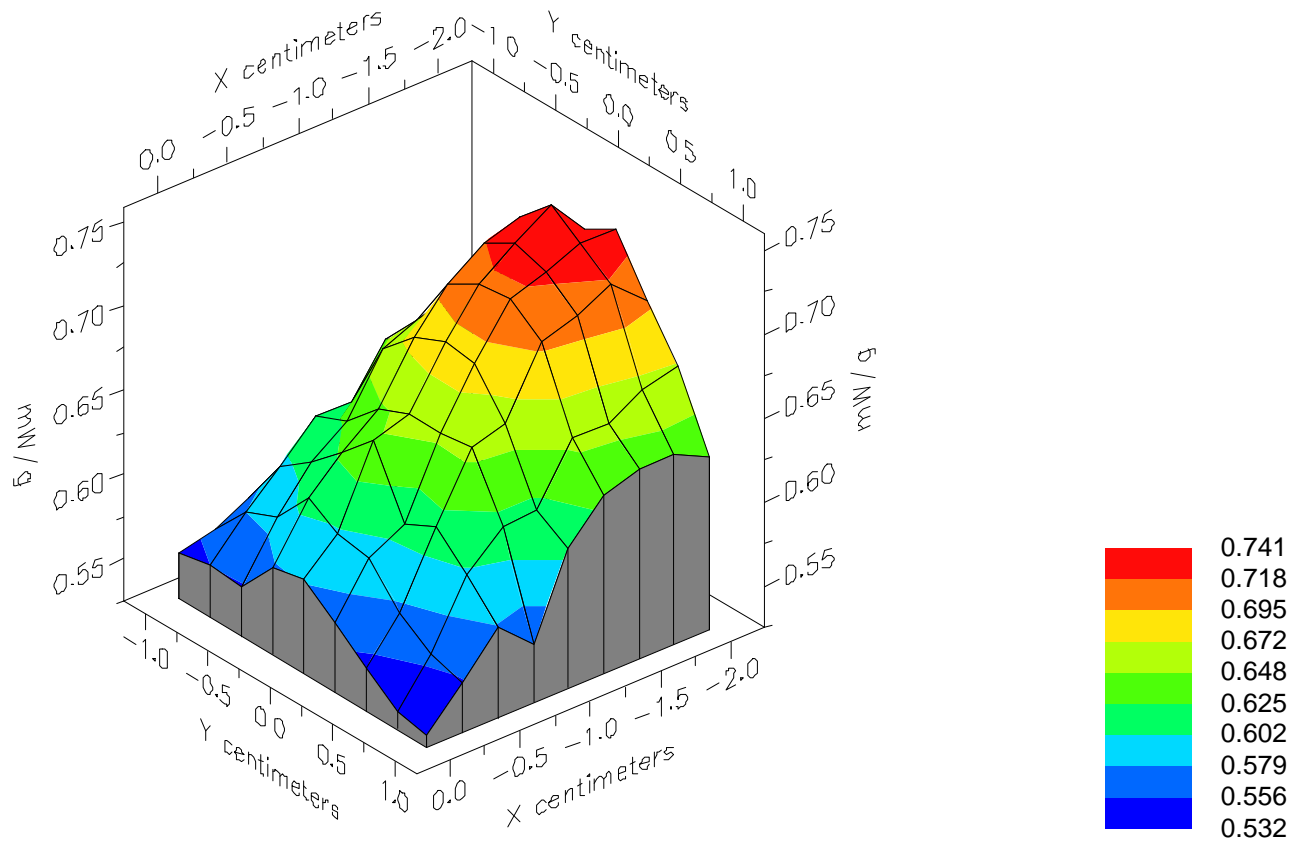


File : 00091505_ZOOM

Start : 15-Sep-100 12:10:16 pm End : 15-Sep-100 12:19:10 pm

SAMSUNG/SPH-S100/B01E1A7C;1908.75MHz;W;Helical/Internal;

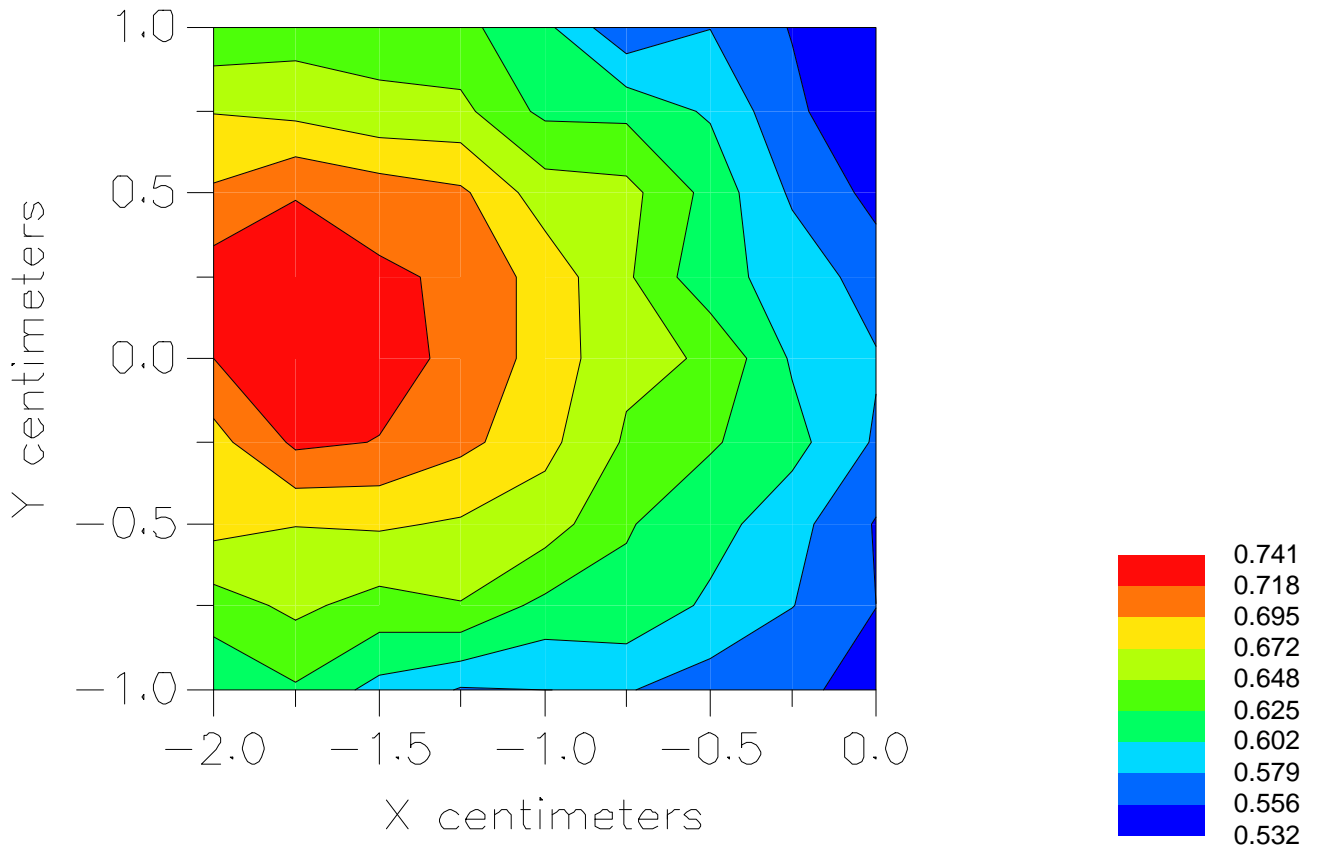
Head/Face;ZOOM/SAR;PCTEST/E Field/0 DegreesBrain/41.300/1.650



File : 00091505_ZOOM

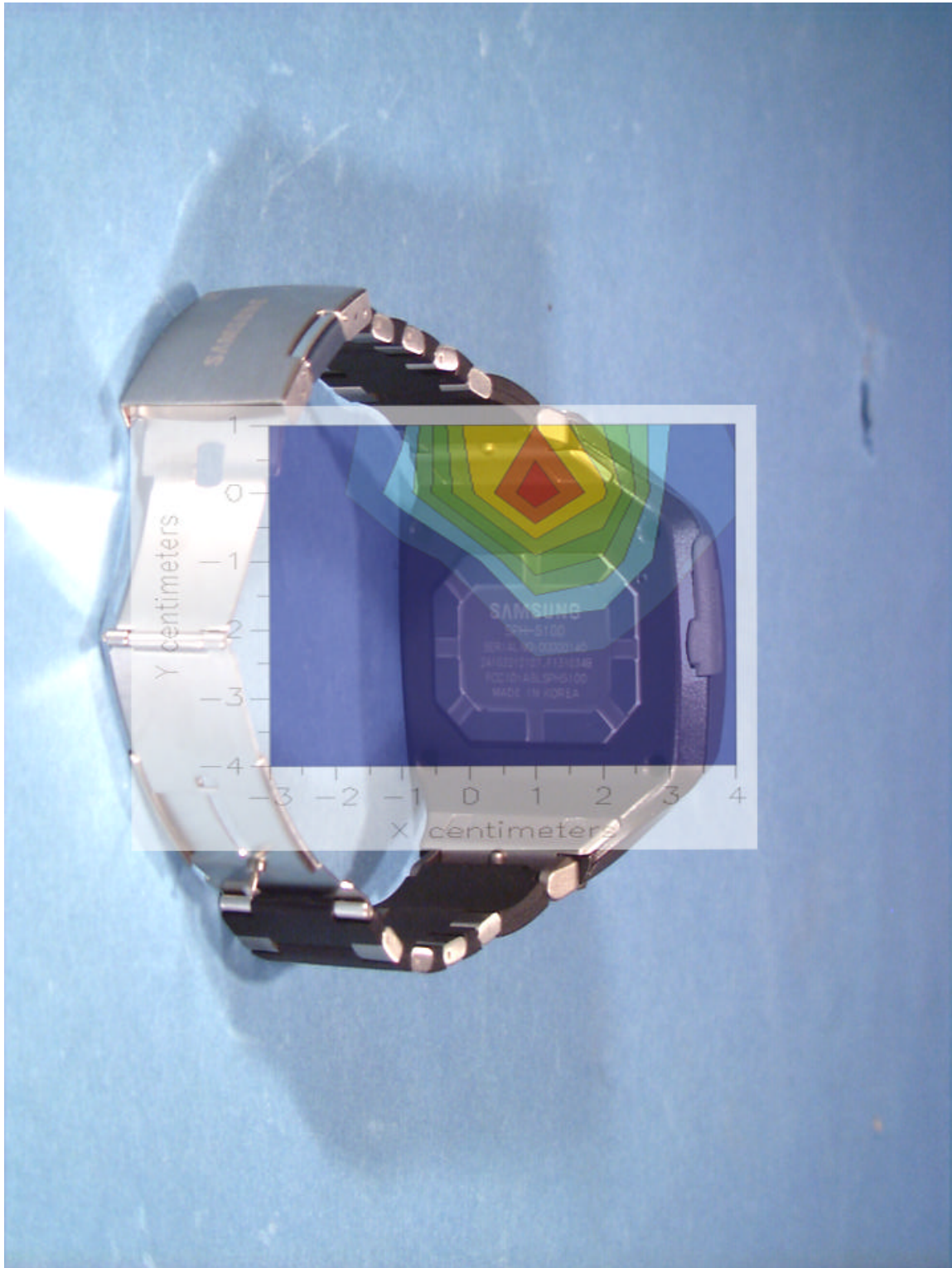
Start : 15-Sep-100 12:10:16 pm End : 15-Sep-100 12:19:10 pm

SAMSUNG/SPH-S100/B01E1A7C;1908.75MHz;W;Helical/Internal;
Head/Face;ZOOM/SAR;PCTEST/E Field/0 DegreesBrain/41.300/1.650



Peak SAR Location

PCS Wrist SAR



File : c:/idx3/SYSTEM/SARMEAS3/data/Normal/00090602_SAR.VLT
Start : 6-Sep-100 02:58:21 pm End : 6-Sep-100 03:04:40 pm

Radio Type : SAMSUNG
Model Number : SPH-S100
Serial Number : B01E1A7C
Frequency : 1851.25 MHz
Peak Trans. Pwr : 0.320 W
Start Trans. Pwr: 0.320 W
Antenna Type : Helical
Antenna Posn. : Internal
Phantom Type : Forearm
Phantom Posn. : Wrist
Scan Type : ZOOM/SAR 10g
Probe Name : PCTEST
Field Type : E Field
Orientation : 0 Degrees

Mixture Type = Muscle
Mixture Dielectric Constant = 54.200
Mixture Conductivity = 1.850

Comment :
SAMSUNG PCS MODE WATCH PHONE
CHAN 0025 Conducted 25.0 dB
WRIST SAR

Robot : PCTEST

Probe Offset = 0.25 cm
Sensor Factor = 0.0108
Conversion Factor = 1.378

PCTEST Amplifier Channel Settings : 0.245 0.231 0.224

Max Location : X = 0.500, Y = 0.000, Z = 0.000 (cm) Value = 73.801

Ave. SAR over 10 g (mW/g) = 3.3553

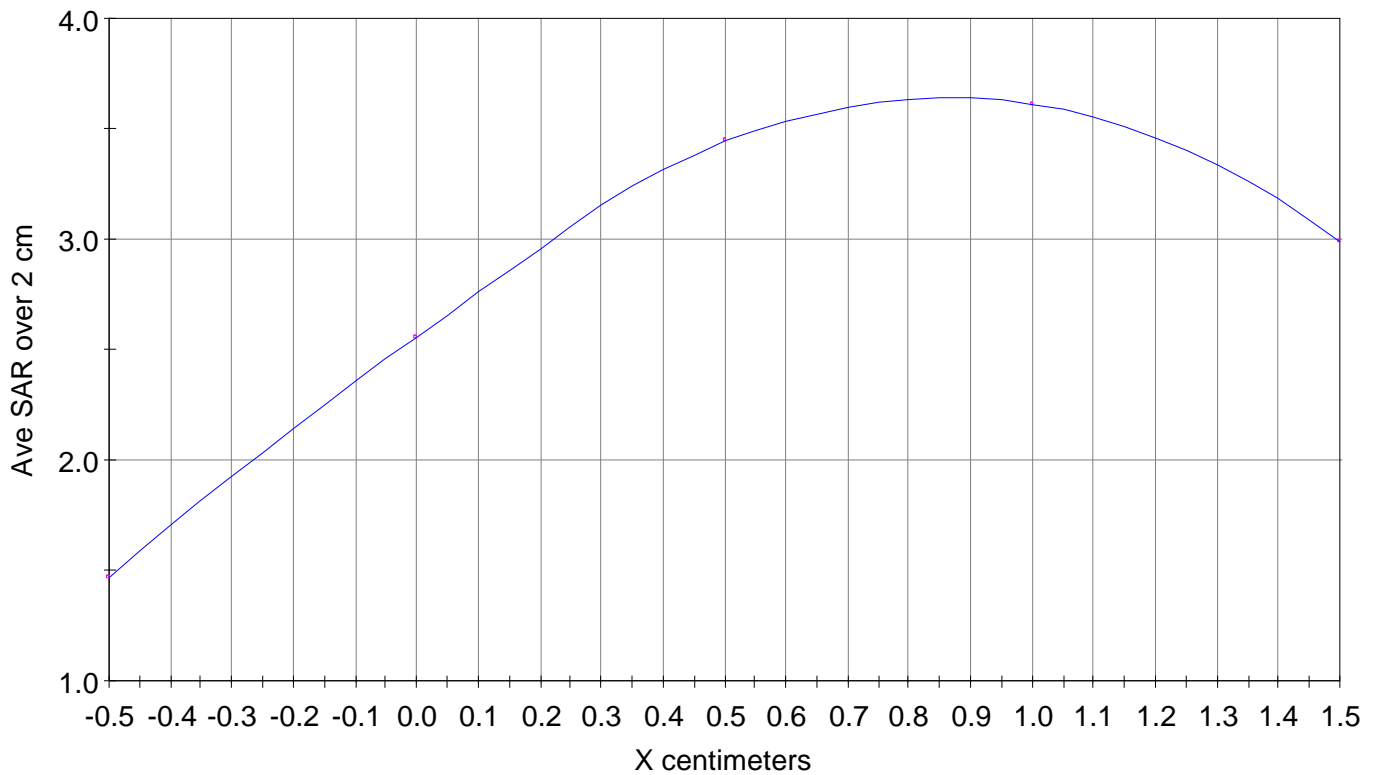
X-Z Plane Slice Y= 0.000

File : 00090602_SAR

Start : 6-Sep-100 02:58:21 pm End : 6-Sep-100 03:04:40 pm

SAMSUNG/SPH-S100/B01E1A7C;1851.25MHz;W;Helical/Internal;

Forearm/Wrist;ZOOM/SAR 10g;PCTEST/E Field/0 DegreesMuscle/54.200/1.850

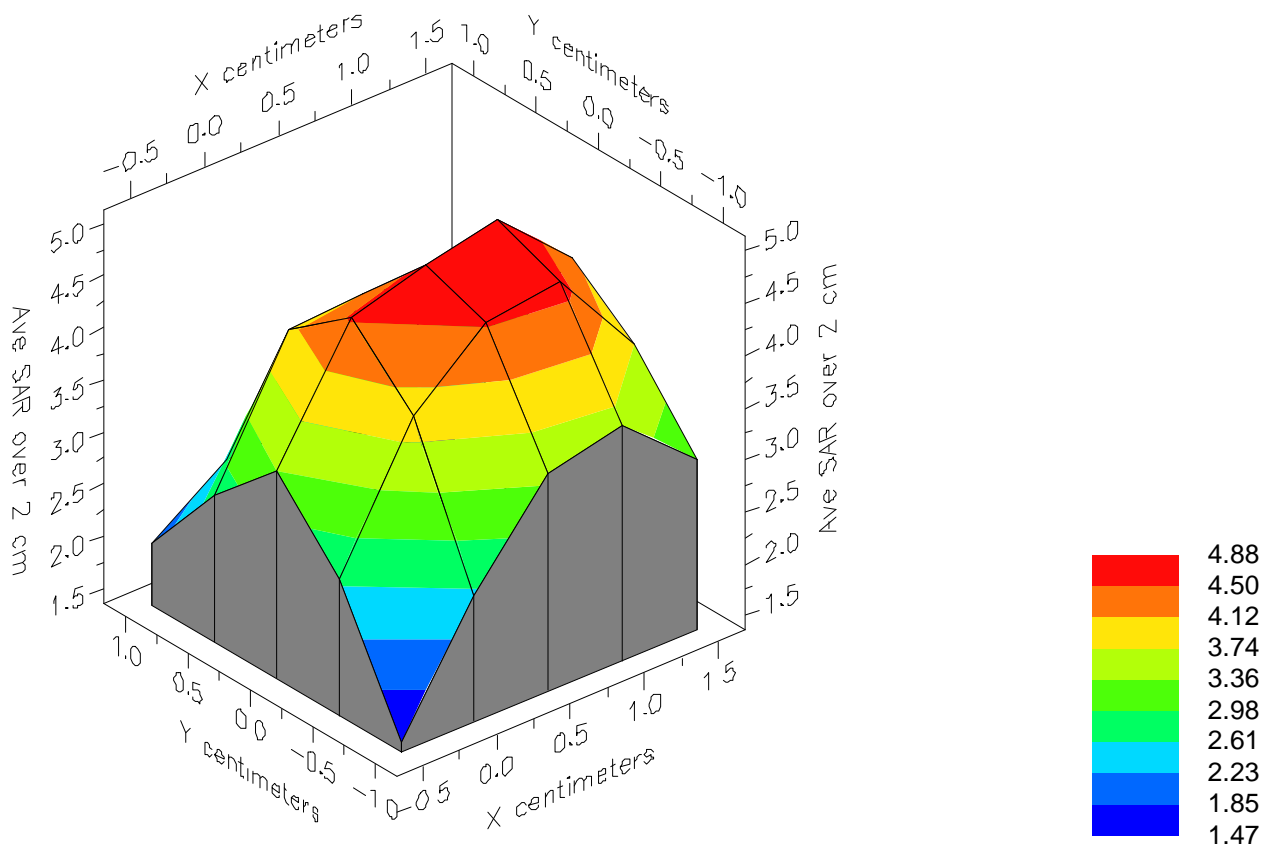


File : 00090602_SAR

Start : 6-Sep-100 02:58:21 pm End : 6-Sep-100 03:04:40 pm

SAMSUNG/SPH-S100/B01E1A7C;1851.25MHz;W;Helical/Internal;

Forearm/Wrist;ZOOM/SAR 10g;PCTEST/E Field/0 DegreesMuscle/54.200/1.850

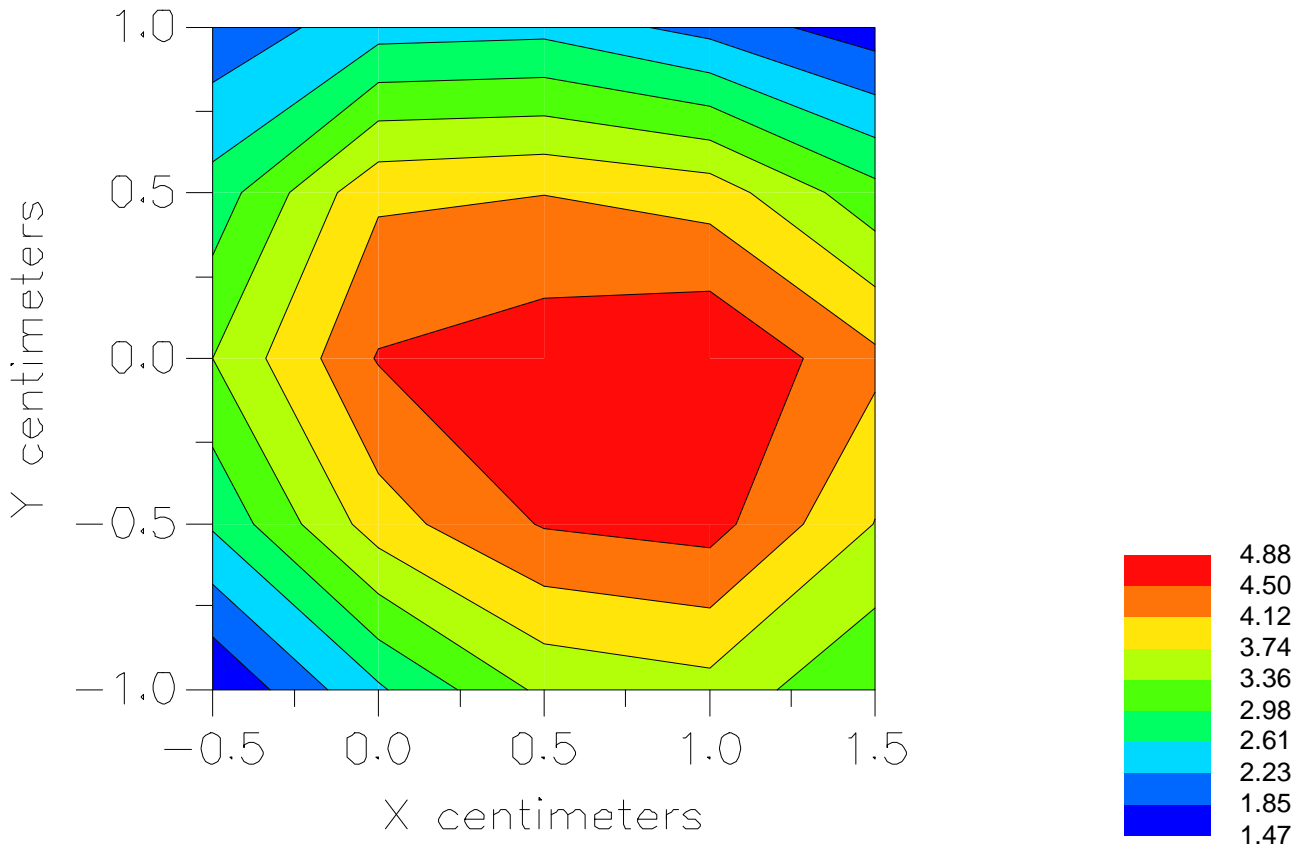


File : 00090602_SAR

Start : 6-Sep-100 02:58:21 pm End : 6-Sep-100 03:04:40 pm

SAMSUNG/SPH-S100/B01E1A7C;1851.25MHz;W;Helical/Internal;

Forearm/Wrist;ZOOM/SAR 10g;PCTEST/E Field/0 DegreesMuscle/54.200/1.850



File : c:/idx3/SYSTEM/SARMEAS3/data/Normal/00090603_SAR.VLT
Start : 6-Sep-100 03:33:00 pm End : 6-Sep-100 03:39:18 pm

Radio Type : SAMSUNG
Model Number : SPH-S100
Serial Number : B01E1A7C
Frequency : 1880.00 MHz
Peak Trans. Pwr : 0.320 W
Start Trans. Pwr : 0.320 W
Antenna Type : Helical
Antenna Posn. : Internal
Phantom Type : Forearm
Phantom Posn. : Wrist
Scan Type : ZOOM/SAR 10g
Probe Name : PCTEST
Field Type : E Field
Orientation : 0 Degrees

Mixture Type = Muscle
Mixture Dielectric Constant = 54.200
Mixture Conductivity = 1.850

Comment :
SAMSUNG PCS MODE WATCH PHONE
CHAN 0600 Conducted 25.0 dB
WRIST SAR

Robot : PCTEST

Probe Offset = 0.25 cm
Sensor Factor = 0.0108
Conversion Factor = 1.378

PCTEST Amplifier Channel Settings : 0.245 0.231 0.224

Max Location : X = 0.500, Y = -0.250, Z = 0.000 (cm) Value = 53.788

Ave. SAR over 10 g (mW/g) = 2.3327

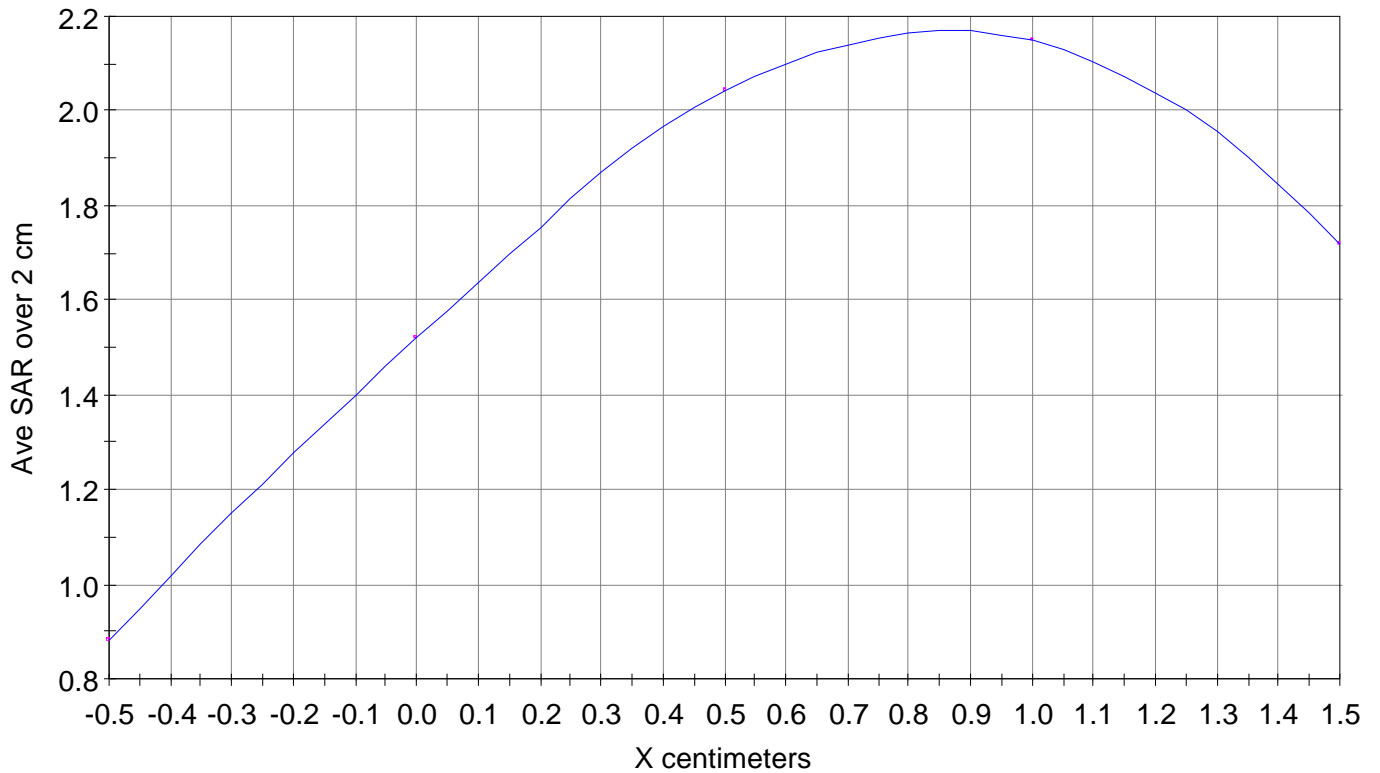
X-Z Plane Slice Y=-0.250

File : 00090603_SAR

Start : 6-Sep-100 03:33:00 pm End : 6-Sep-100 03:39:18 pm

SAMSUNG/SPH-S100/B01E1A7C;1880.00MHz;W;Helical/Internal;

Forearm/Wrist;ZOOM/SAR 10g;PCTEST/E Field/0 DegreesMuscle/54.200/1.850

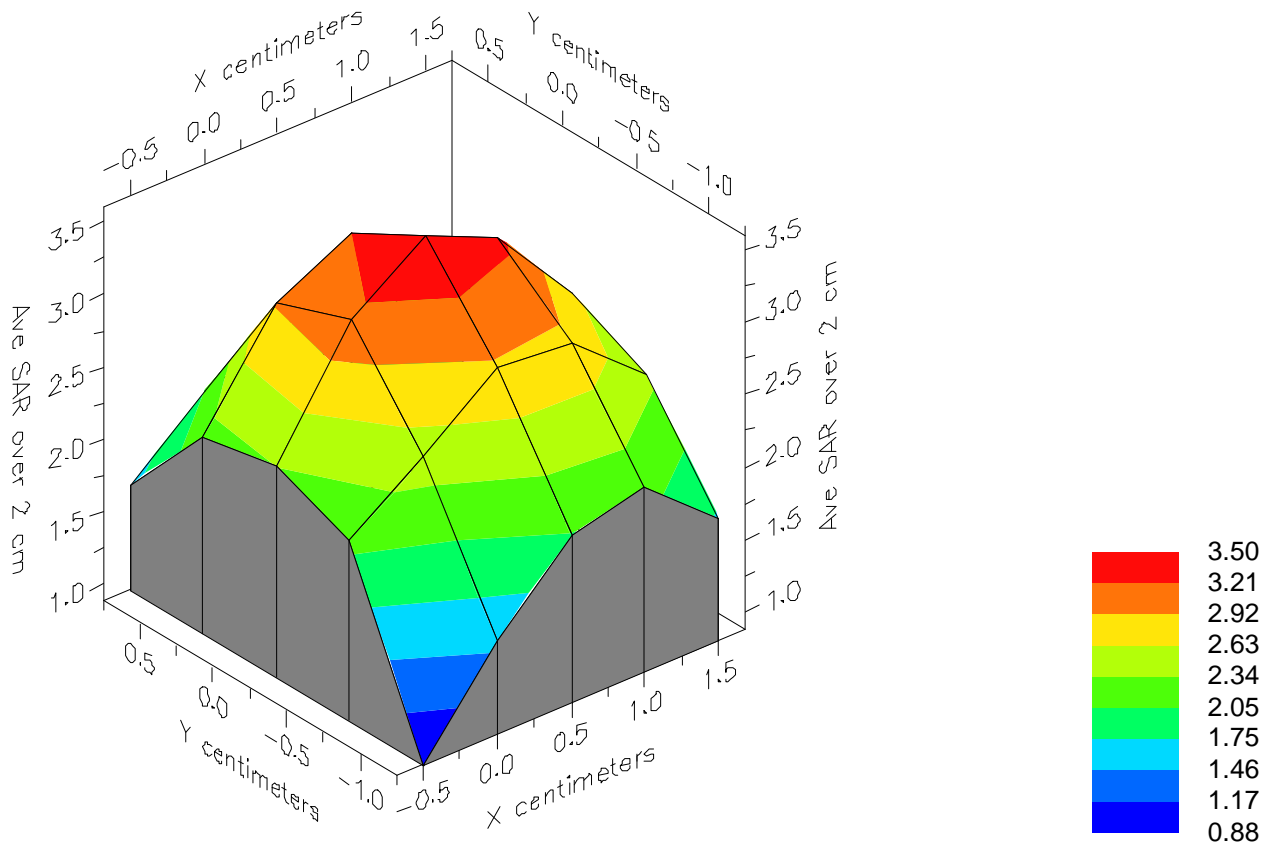


File : 00090603_SAR

Start : 6-Sep-100 03:33:00 pm End : 6-Sep-100 03:39:18 pm

SAMSUNG/SPH-S100/B01E1A7C;1880.00MHz;W;Helical/Internal;

Forearm/Wrist;ZOOM/SAR 10g;PCTEST/E Field/0 DegreesMuscle/54.200/1.850

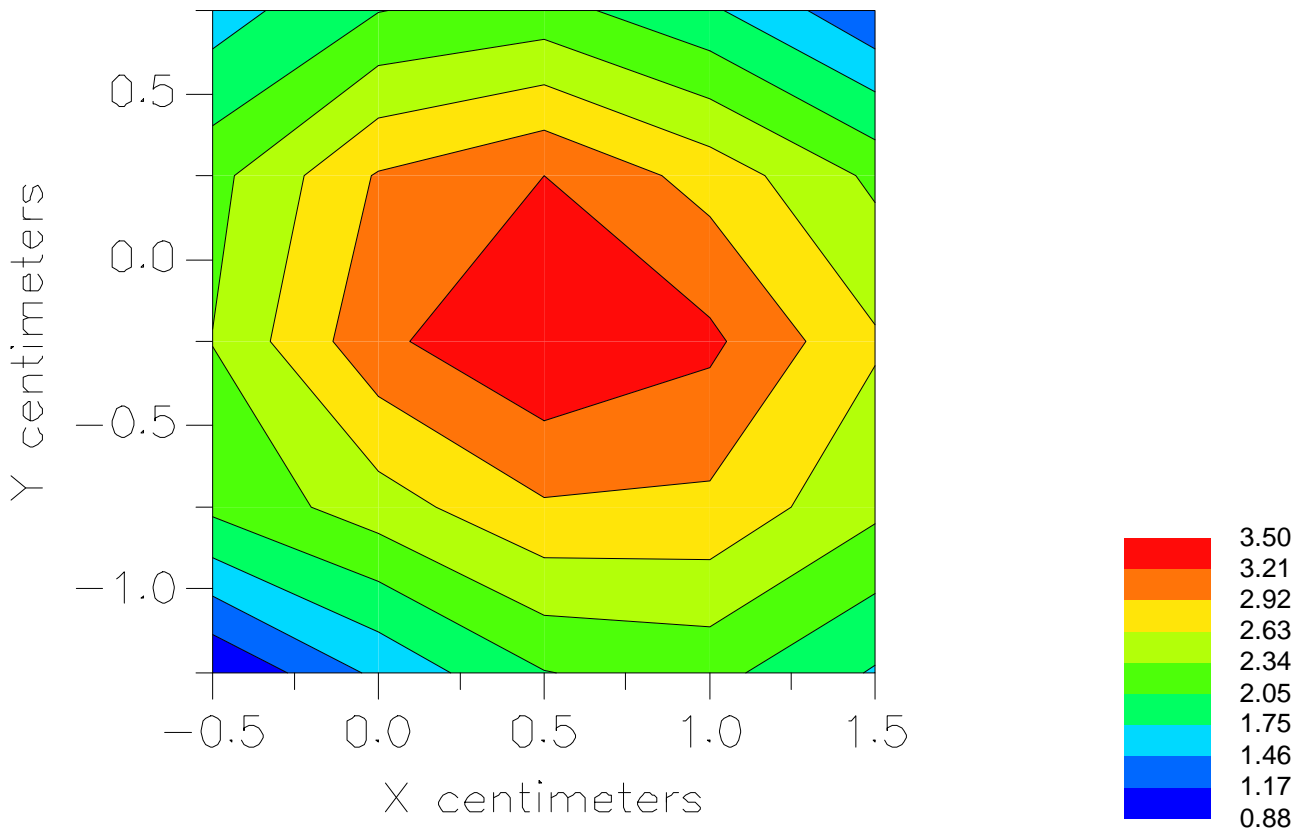


File : 00090603_SAR

Start : 6-Sep-100 03:33:00 pm End : 6-Sep-100 03:39:18 pm

SAMSUNG/SPH-S100/B01E1A7C;1880.00MHz;W;Helical/Internal;

Forearm/Wrist;ZOOM/SAR 10g;PCTEST/E Field/0 DegreesMuscle/54.200/1.850



File : c:/idx3/SYSTEM/SARMEAS3/data/Normal/00090604_SAR.VLT
Start : 6-Sep-100 04:14:18 pm End : 6-Sep-100 04:20:33 pm

Radio Type : SAMSUNG
Model Number : SPH-S100
Serial Number : B01E1A7C
Frequency : 1908.75 MHz
Peak Trans. Pwr : 0.320 W
Start Trans. Pwr : 0.320 W
Antenna Type : Helical
Antenna Posn. : Internal
Phantom Type : Forearm
Phantom Posn. : Wrist
Scan Type : ZOOM/SAR 10g
Probe Name : PCTEST
Field Type : E Field
Orientation : 0 Degrees

Mixture Type = Muscle
Mixture Dielectric Constant = 54.200
Mixture Conductivity = 1.850

Comment :
SAMSUNG PCS MODE WATCH PHONE
CHAN 1175 Conducted 25.0 dB
WRIST SAR

Robot : PCTEST

Probe Offset = 0.25 cm
Sensor Factor = 0.0108
Conversion Factor = 1.378

PCTEST Amplifier Channel Settings : 0.245 0.231 0.224

Max Location : X = 0.500, Y = -0.250, Z = 0.000 (cm) Value = 71.395

Ave. SAR over 10 g (mW/g) = 3.0544

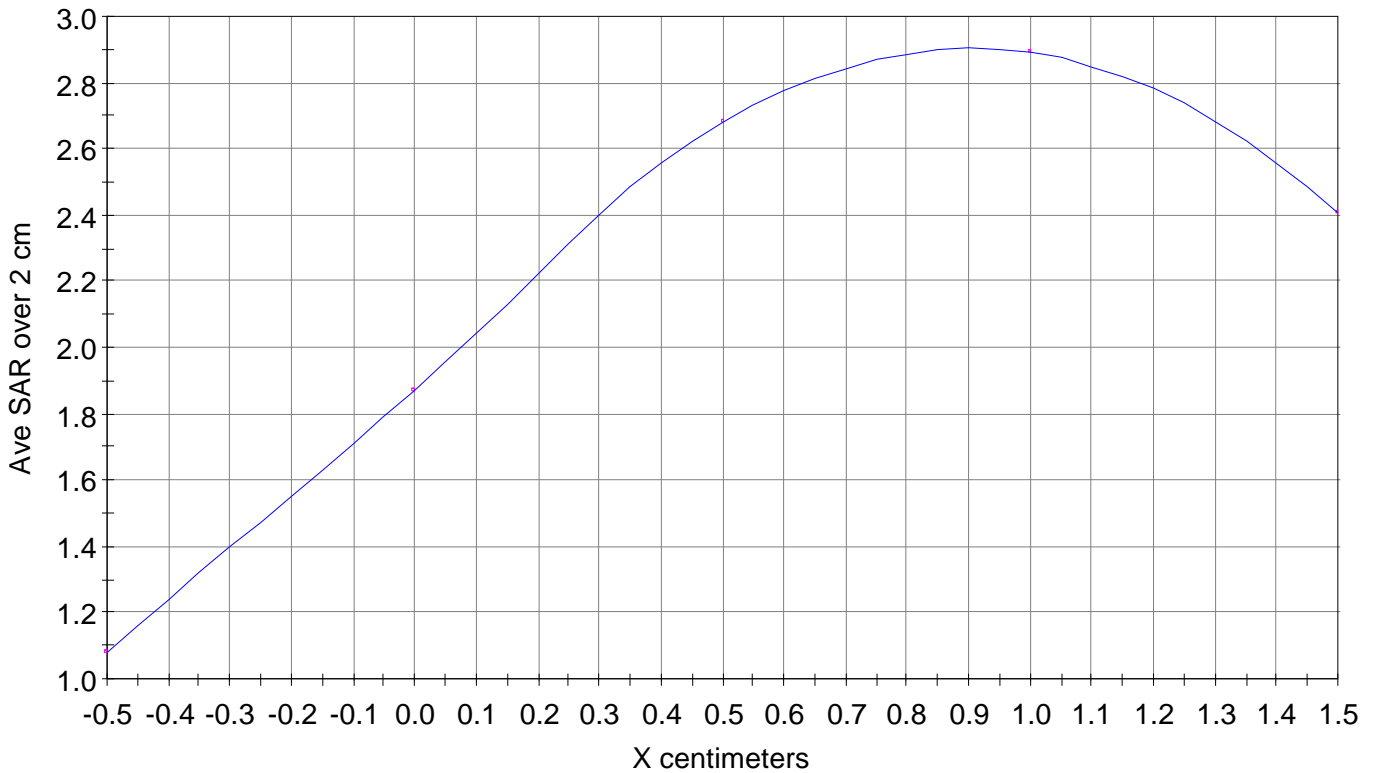
X-Z Plane Slice Y=-0.250

File : 00090604_SAR

Start : 6-Sep-100 04:14:18 pm End : 6-Sep-100 04:20:33 pm

SAMSUNG/SPH-S100/B01E1A7C;1908.75MHz;W;Helical/Internal;

Forearm/Wrist;ZOOM/SAR 10g;PCTEST/E Field/0 DegreesMuscle/54.200/1.850

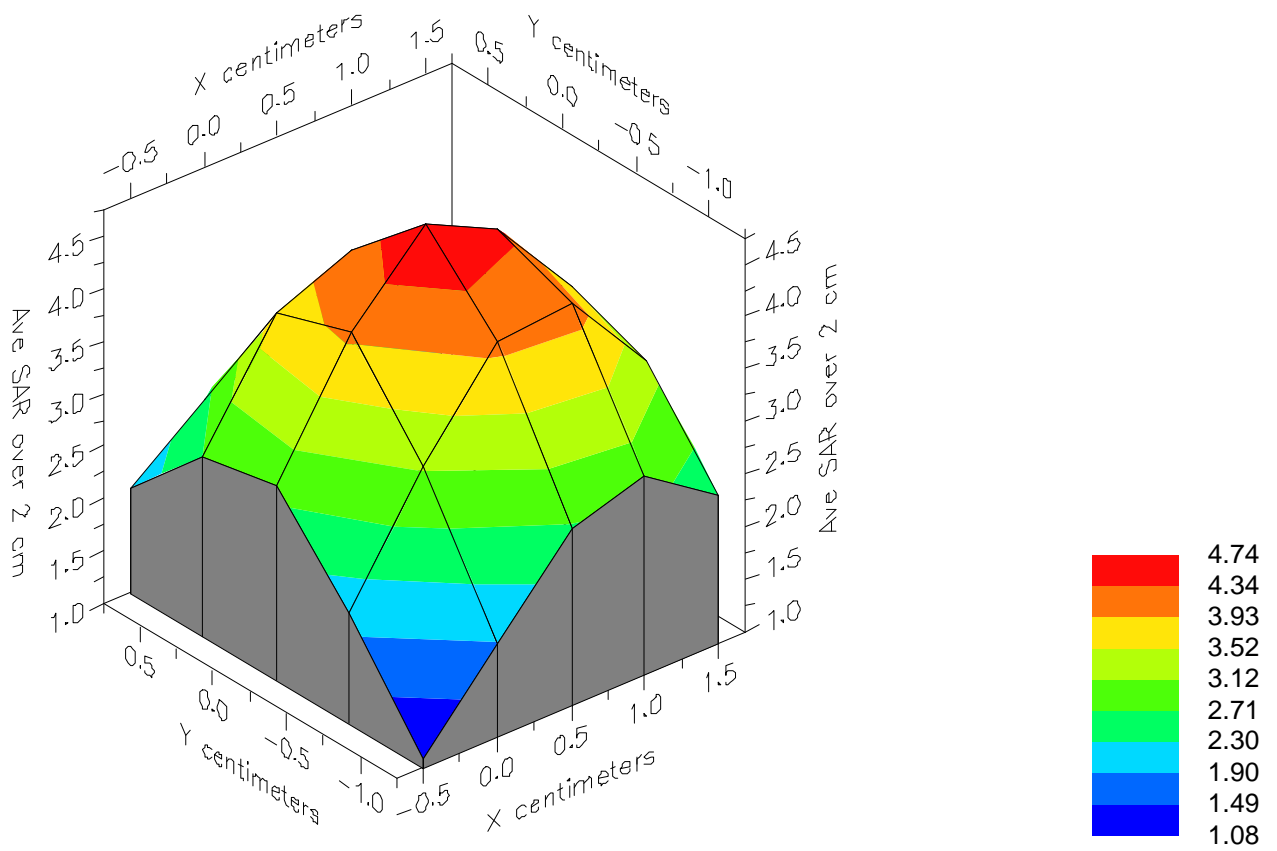


File : 00090604_SAR

Start : 6-Sep-100 04:14:18 pm End : 6-Sep-100 04:20:33 pm

SAMSUNG/SPH-S100/B01E1A7C;1908.75MHz;W;Helical/Internal;

Forearm/Wrist;ZOOM/SAR 10g;PCTEST/E Field/0 DegreesMuscle/54.200/1.850



File : 00090604_SAR

Start : 6-Sep-100 04:14:18 pm End : 6-Sep-100 04:20:33 pm

SAMSUNG/SPH-S100/B01E1A7C;1908.75MHz;W;Helical/Internal;

Forearm/Wrist;ZOOM/SAR 10g;PCTEST/E Field/0 DegreesMuscle/54.200/1.850

