







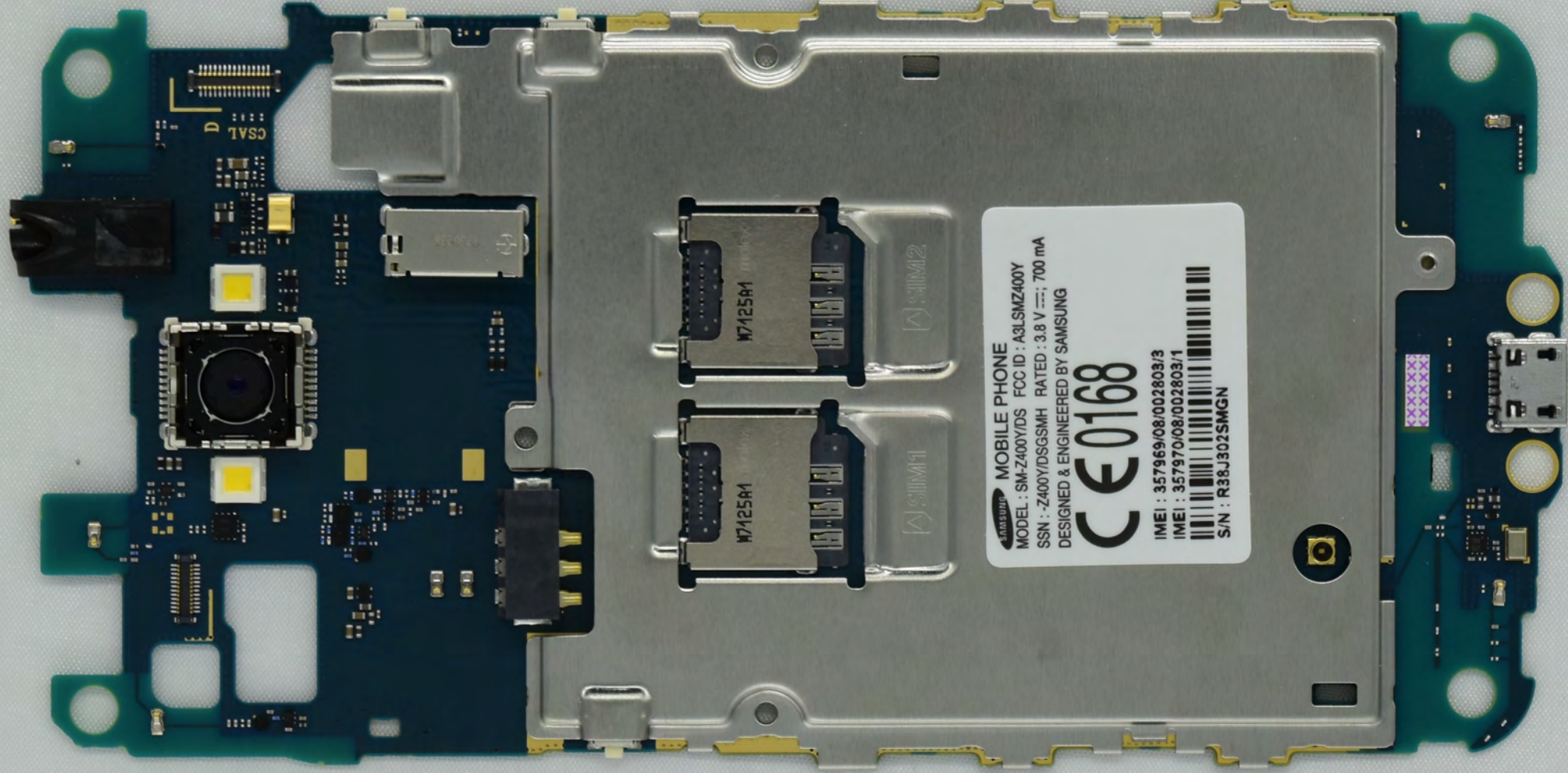




MOBILE PHONE  
MODEL : SM-Z400YDS FCC ID : A3LSMZ400Y  
SSN : Z400YDGSNH RATED : 3.8 V ---, 700 ma  
DESIGNED & ENGINEERED BY SAMSUNG

**CE0168**

IMEI : 35796908002803/3  
IMEI : 35797008002803/1  
SIN : R38J3025MGN



MOBILE PHONE  
MODEL : SM-Z400Y/DS FCC ID : A3LSMZ400Y  
SSN : Z400Y/DSGSMH RATED : 3.8 V ---; 700 mA  
DESIGNED & ENGINEERED BY SAMSUNG

**CE0168**

IMEI : 35796908/002803/3  
IMEI : 35797008/002803/1  
S/N : R36J302SMGN

