

20160117_SystemPerformanceCheck-D5GHzV2 SN 1184

Frequency: 5800 MHz; Duty Cycle: 1:1; Room Ambient Temperature: 24.0°C; Liquid Temperature: 23.0°C
 Medium parameters used: $f = 5800 \text{ MHz}$; $\sigma = 5.976 \text{ S/m}$; $\epsilon_r = 48.039$; $\rho = 1000 \text{ kg/m}^3$

DASY5 Configuration:

- Area Scan Setting: Find Secondary Maximum Within: 2.0 dB and with a peak SAR value greater than 0.0012W/kg
- Averaged Fast SAR: Polynomial fit
- Electronics: DAE4 Sn1447; Calibrated: 2015-09-23
- Probe: EX3DV4 - SN7314; ConvF(3.91, 3.91, 3.91); Calibrated: 2015-09-25;
- Sensor-Surface: 1.4mm (Mechanical Surface Detection)
- Phantom: ELI v6.0; Type: QDOVA003AA; Serial: TP:2013

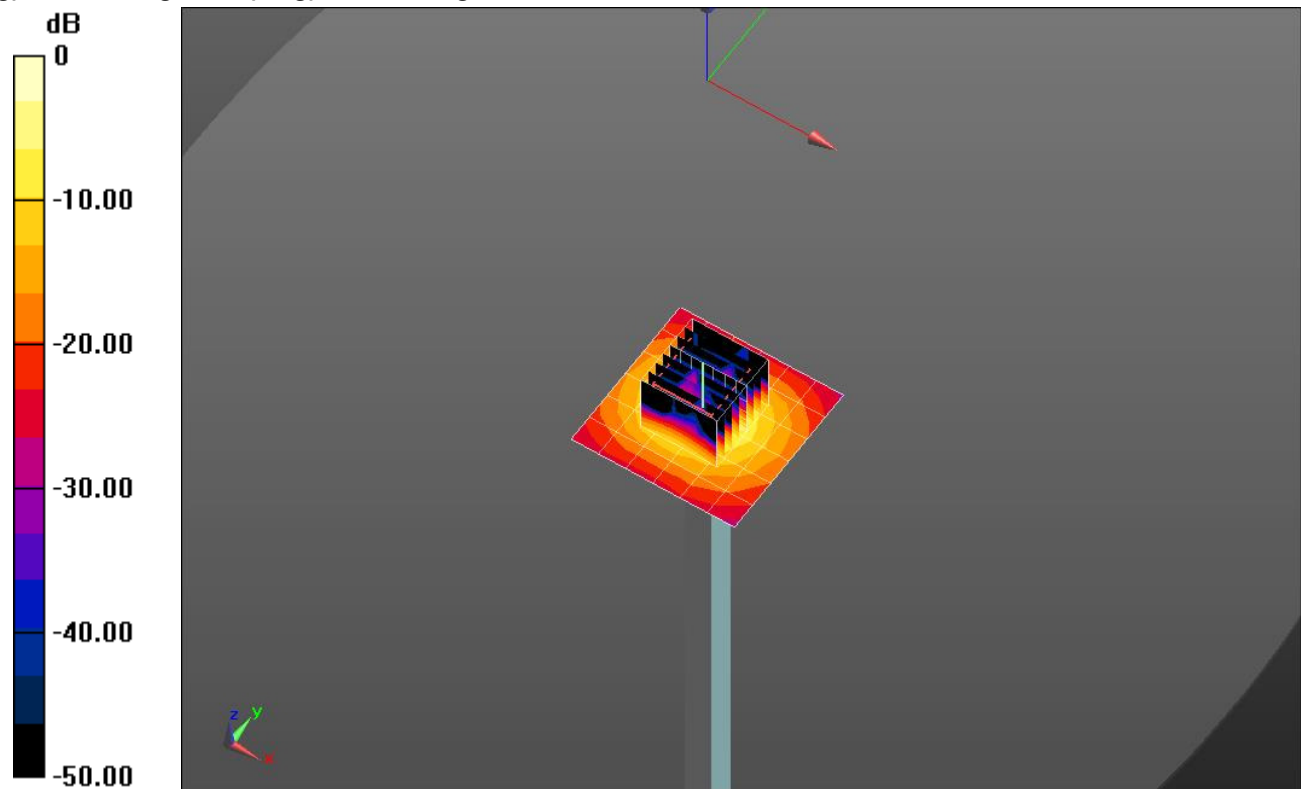
Body/5.8 GHz, Pin=100mW/Area Scan (7x7x1): Measurement grid: dx=10mm, dy=10mm
 Maximum value of SAR (measured) = 18.4 W/kg

Body/5.8 GHz, Pin=100mW/Zoom Scan (8x8x7)/Cube 0: Measurement grid: dx=4mm, dy=4mm, dz=1.4mm

Reference Value = 51.03 V/m; Power Drift = 0.07 dB

Peak SAR (extrapolated) = 30.7 W/kg

SAR(1 g) = 7.33 W/kg; SAR(10 g) = 2.05 W/kg

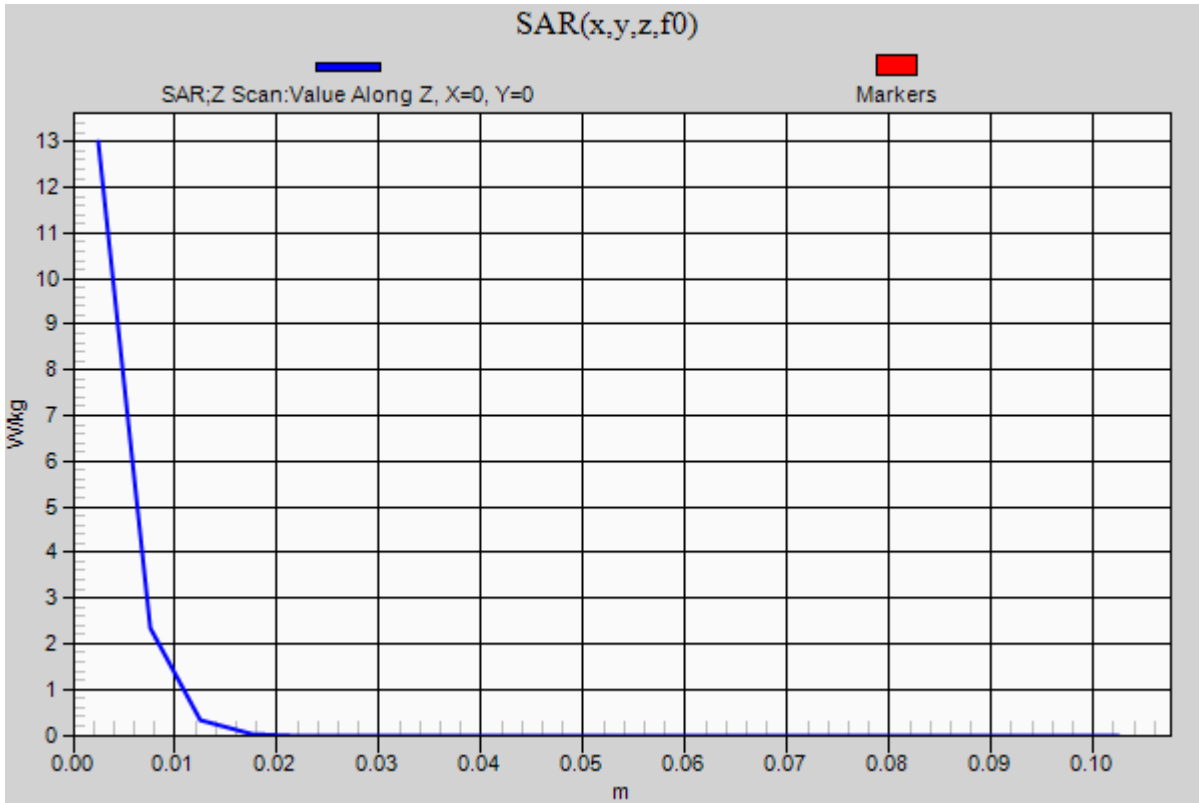


0 dB = 18.4 W/kg = 12.65 dBW/kg

20160117_SystemPerformanceCheck-D5GHzV2 SN 1184

Frequency: 5800 MHz; Duty Cycle: 1:1

Body/5.8 GHz, Pin=100mW/Z Scan (1x1x21): Measurement grid: dx=20mm, dy=20mm, dz=5mm
Maximum value of SAR (measured) = 13.0 W/kg



20160113_SystemPerformanceCheck-D2450V2 SN 960

Frequency: 2450 MHz; Duty Cycle: 1:1; Room Ambient Temperature: 24.0°C; Liquid Temperature: 23.0°C
Medium parameters used: $f = 2450$ MHz; $\sigma = 2.026$ S/m; $\epsilon_r = 50.754$; $\rho = 1000$ kg/m³

DASY5 Configuration:

- Area Scan Setting: Find Secondary Maximum Within: 2.0 dB and with a peak SAR value greater than 0.0012W/kg
- Averaged Fast SAR: Polynomial fit
- Electronics: DAE4 Sn1468; Calibrated: 2015-09-15
- Probe: EX3DV4 - SN7376; ConvF(7.37, 7.37, 7.37); Calibrated: 2015-09-02;
- Sensor-Surface: 4mm (Mechanical Surface Detection)
- Phantom: ELI v6.0; Type: QDOVA003AA; Serial: TP:xxxx

Body/Pin=100 mW/Area Scan (9x8x1): Measurement grid: dx=12mm, dy=12mm

Maximum value of SAR (measured) = 5.88 W/kg

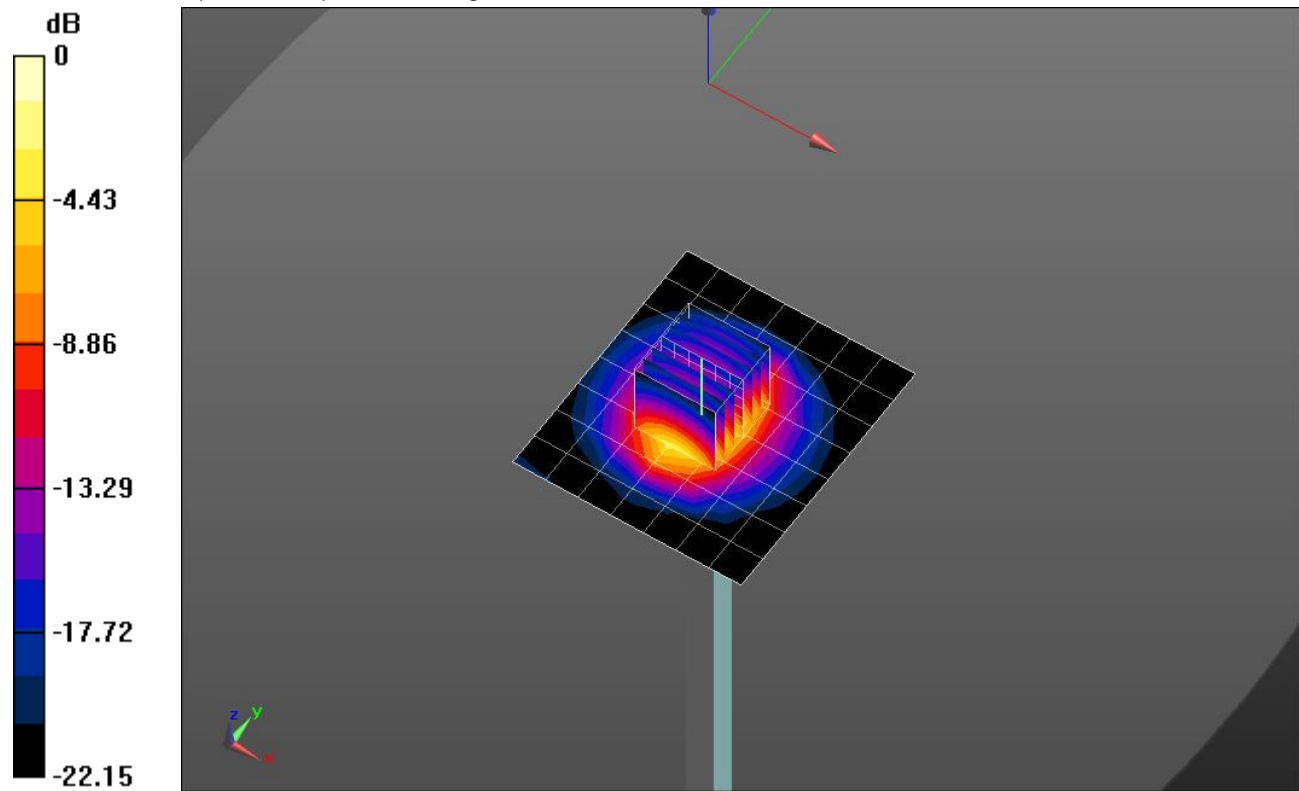
Body/Pin=100 mW/Zoom Scan (7x7x7)/Cube 0: Measurement grid: dx=5mm, dy=5mm, dz=5mm

Reference Value = 64.92 V/m; Power Drift = -0.12 dB

Peak SAR (extrapolated) = 11.1 W/kg

SAR(1 g) = 5.33 W/kg; SAR(10 g) = 2.44 W/kg

Maximum value of SAR (measured) = 6.08 W/kg



0 dB = 6.08 W/kg = 7.84 dBW/kg

20160113_SystemPerformanceCheck-D2450V2 SN 960

Frequency: 2450 MHz; Duty Cycle: 1:1

Body/Pin=100 mW/Z Scan (1x1x21): Measurement grid: dx=20mm, dy=20mm, dz=5mm
Maximum value of SAR (measured) = 1.97 W/kg

