

## 20150827\_SystemPerformanceCheck-D2450V2 SN 960

Frequency: 2450 MHz; Duty Cycle: 1:1; Room Ambient Temperature: 24.0°C; Liquid Temperature: 23.0°C  
 Medium parameters used:  $f = 2450 \text{ MHz}$ ;  $\sigma = 2.033 \text{ S/m}$ ;  $\epsilon_r = 51.197$ ;  $\rho = 1000 \text{ kg/m}^3$

DASY5 Configuration:

- Area Scan Setting: Find Secondary Maximum Within: 2.0 dB and with a peak SAR value greater than 0.0012W/kg
- Averaged Fast SAR: Polynomial fit
- Electronics: DAE4 Sn1446; Calibrated: 2015-08-17
- Probe: EX3DV4 - SN7313; ConvF(7.12, 7.12, 7.12); Calibrated: 2015-07-23;
- Sensor-Surface: 4mm (Mechanical Surface Detection), Sensor-Surface: 2.5mm (Mechanical Surface Detection)
- Phantom: ELI v5.0 (20deg probe tilt); Type: QDOVA002AA; Serial: TP:2005

**Body/Pin=100 mW 2 2/Area Scan (9x8x1):** Measurement grid: dx=12mm, dy=12mm

Maximum value of SAR (measured) = 6.09 W/kg

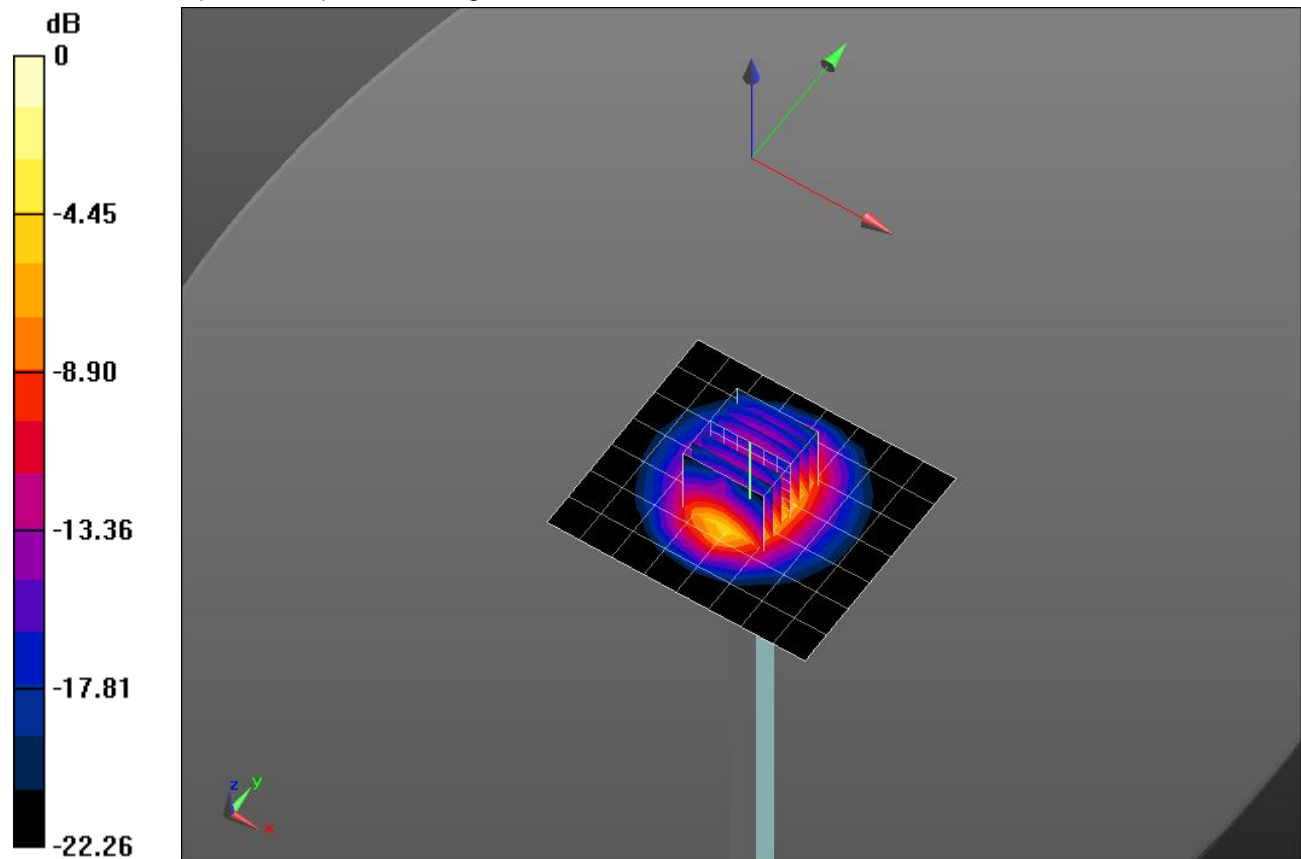
**Body/Pin=100 mW 2 2/Zoom Scan (7x7x7)/Cube 0:** Measurement grid: dx=5mm, dy=5mm, dz=5mm

Reference Value = 65.33 V/m; Power Drift = -0.01 dB

Peak SAR (extrapolated) = 11.3 W/kg

**SAR(1 g) = 5.5 W/kg; SAR(10 g) = 2.55 W/kg**

Maximum value of SAR (measured) = 7.74 W/kg

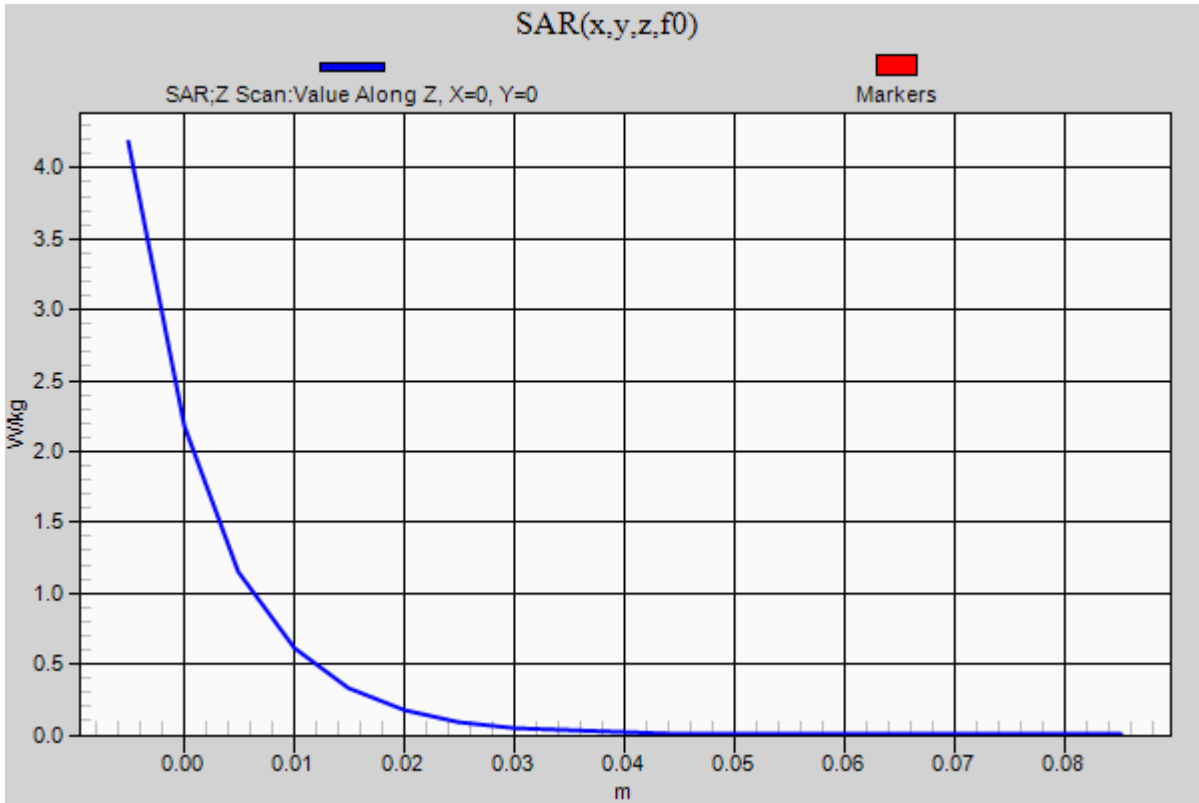


0 dB = 7.74 W/kg = 8.89 dBW/kg

### 20150827\_SystemPerformanceCheck-D2450V2 SN 960

Frequency: 2450 MHz; Duty Cycle: 1:1

**Body/Pin=100 mW 2 /Z Scan (1x1x21):** Measurement grid: dx=20mm, dy=20mm, dz=5mm  
Maximum value of SAR (measured) = 4.18 W/kg



## 20150903\_SystemPerformanceCheck-D5GHzV2 SN 1209

Frequency: 5600 MHz; Duty Cycle: 1:1; Room Ambient Temperature: 24.0°C; Liquid Temperature: 23.0°C  
 Medium parameters used:  $f = 5600$  MHz;  $\sigma = 5.884$  S/m;  $\epsilon_r = 46.789$ ;  $\rho = 1000$  kg/m<sup>3</sup>

DASY5 Configuration:

- Area Scan Setting: Find Secondary Maximum Within: 2.0 dB and with a peak SAR value greater than 0.0012W/kg
- Averaged Fast SAR: Polynomial fit
- Electronics: DAE3 Sn479; Calibrated: 2014-10-15
- Probe: EX3DV4 - SN7352; ConvF(3.83, 3.83, 3.83); Calibrated: 2015-03-06;
- Sensor-Surface: 1.4mm (Mechanical Surface Detection)
- Phantom: ELI Phantom v5.0; Type: QDOVA002AA; Serial: TP:2001

**Body/5.6 GHz, Pin=100mW 2 2 2 2/Area Scan (7x7x1):** Measurement grid: dx=10mm, dy=10mm  
 Maximum value of SAR (measured) = 16.9 W/kg

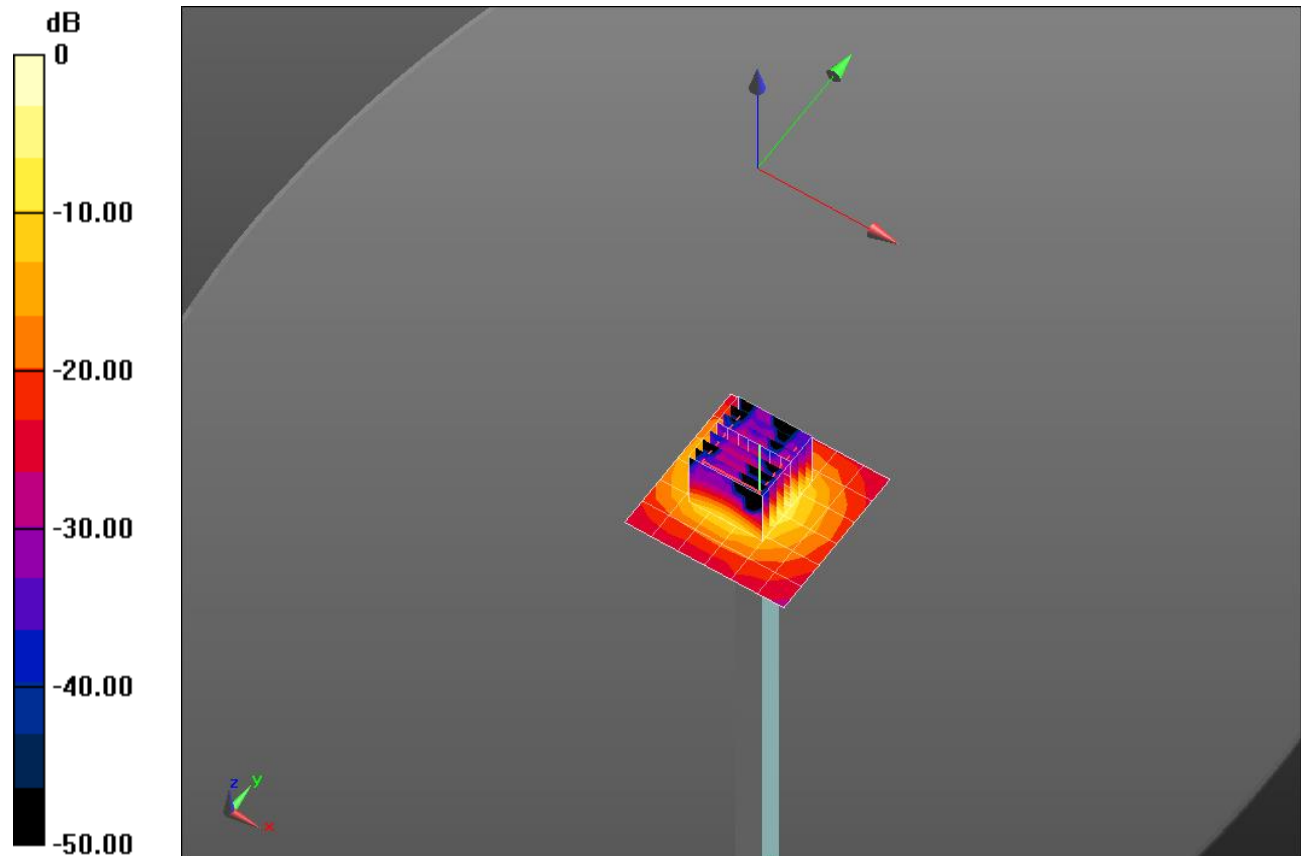
**Body/5.6 GHz, Pin=100mW 2 2 2 2/Zoom Scan (8x8x7)/Cube 0:** Measurement grid: dx=4mm, dy=4mm, dz=1.4mm

Reference Value = 53.60 V/m; Power Drift = 0.18 dB

Peak SAR (extrapolated) = 36.3 W/kg

**SAR(1 g) = 8.42 W/kg; SAR(10 g) = 2.34 W/kg**

Maximum value of SAR (measured) = 19.9 W/kg



0 dB = 19.9 W/kg = 12.99 dBW/kg

### 20150827\_SystemPerformanceCheck-D2450V2 SN 960

Frequency: 2450 MHz; Duty Cycle: 1:1

**Body/Pin=100 mW 2/Z Scan (1x1x21):** Measurement grid: dx=20mm, dy=20mm, dz=5mm  
Maximum value of SAR (measured) = 4.18 W/kg

