



D0610 PV1

B05
D0610 PV1
D0610 PV1

SAMSUNG

CELL MADE IN CHINA, ASSEMBLED IN CHINA
제조사 / Manufacturer: Ningde Amperex Technology Limited
中國製造 / 中国制造 制造商: 宁德新能源科技有限公司

Secondary Li-ion Battery / Batterie Li-ion secondaire /
二次鋰電池組 / 锂离子电池組 / 리튬이온2차전지 / 제품명: 전지
执行标准: GB 31241-2014, GB/T 18287-2013
Nominal Voltage / Tension Nominale /
標稱電壓 / 공칭전압 / 标称电压: 3.8 V \equiv
Charge Voltage / Tension de charge /
充電限制電壓 / 충전전압 / 充电限制电压: 4.35 V \equiv
Rated Capacity / 額定電容量 / 额定容量: 7400 mAh, 28.12 Wh
Typical Capacity: 7600 mAh, 28.88 Wh
A / S 문의 전화번호: 1588-3366
11CP5/80/94-2

Model/型号/型號: EB-BT545ABY
生产日期/製造日期: 2022-05
제조 일자: 2022-05
S/N: DLAT514AD/2-
Not for sale SEC CODE NO: GH43-04969B



Please refer to manual before using battery.
Referrez-vous au mode d'emploi avant
d'utiliser la batterie. Consulte o manual
antes de usar a bateria. Por favor lea el
manual antes de utilizar la batería.



배터리 사용 전 반드시 매뉴얼을 확인하시기 바랍니다
Warning: Do not disassemble, crush,
puncture, heat, burn or reuse. Authorized
Service Provider Only.
禁止拆解、撞擊、擠壓或投入火中。若
出現嚴重鼓脹、請勿繼續使用。請勿置
於高溫環境中。電池浸水後禁止使用！



R-41137359
www.bis.gov.in

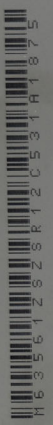


Li-ion 00



SAMSUNG TABLET PC
MODEL: SM-T580
PCE ID: A5L0M0308 BATED: 3.8V/21100 mAh
DESIGNED & ENGINEERED BY SAMSUNG MANUFACTURED IN VIETNAM
FOR YOUR OWN PROTECTION BY RECYCLING CORRESPONDING MARK
CE UK CA
IMEI: 35136504001696/8 64GB
S/N: R32T5003WPF

R

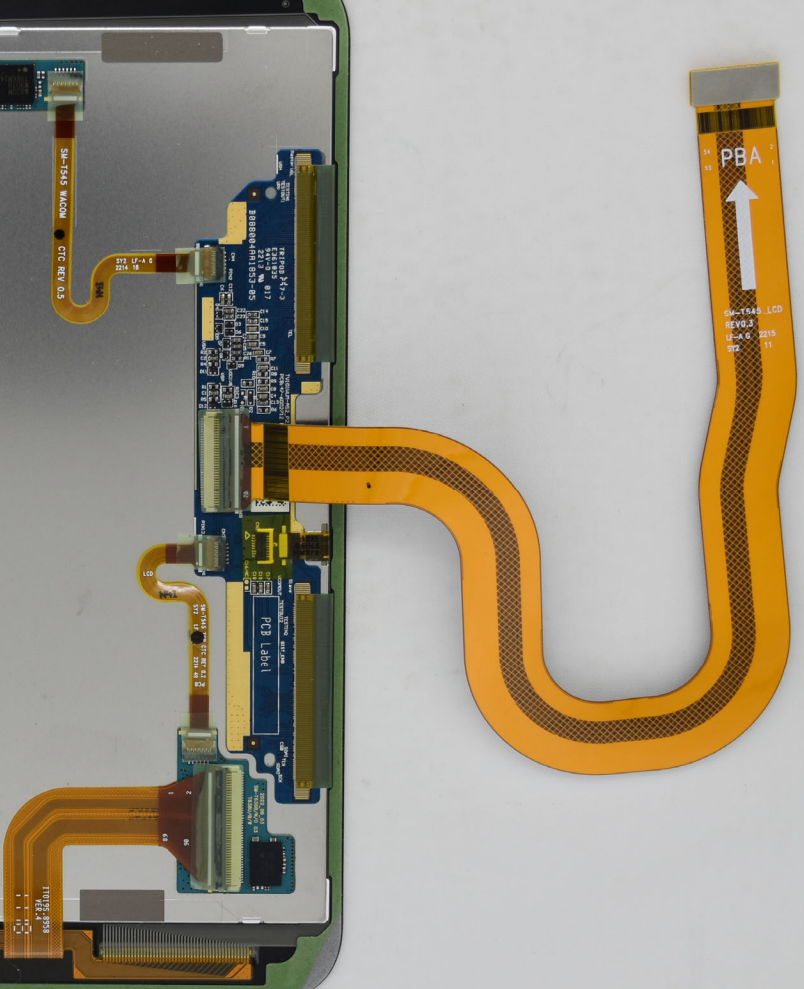


TOP ACTIVE P00

TV101WUM-AS3-D8P0
ENA825ED8P0A2.03PS

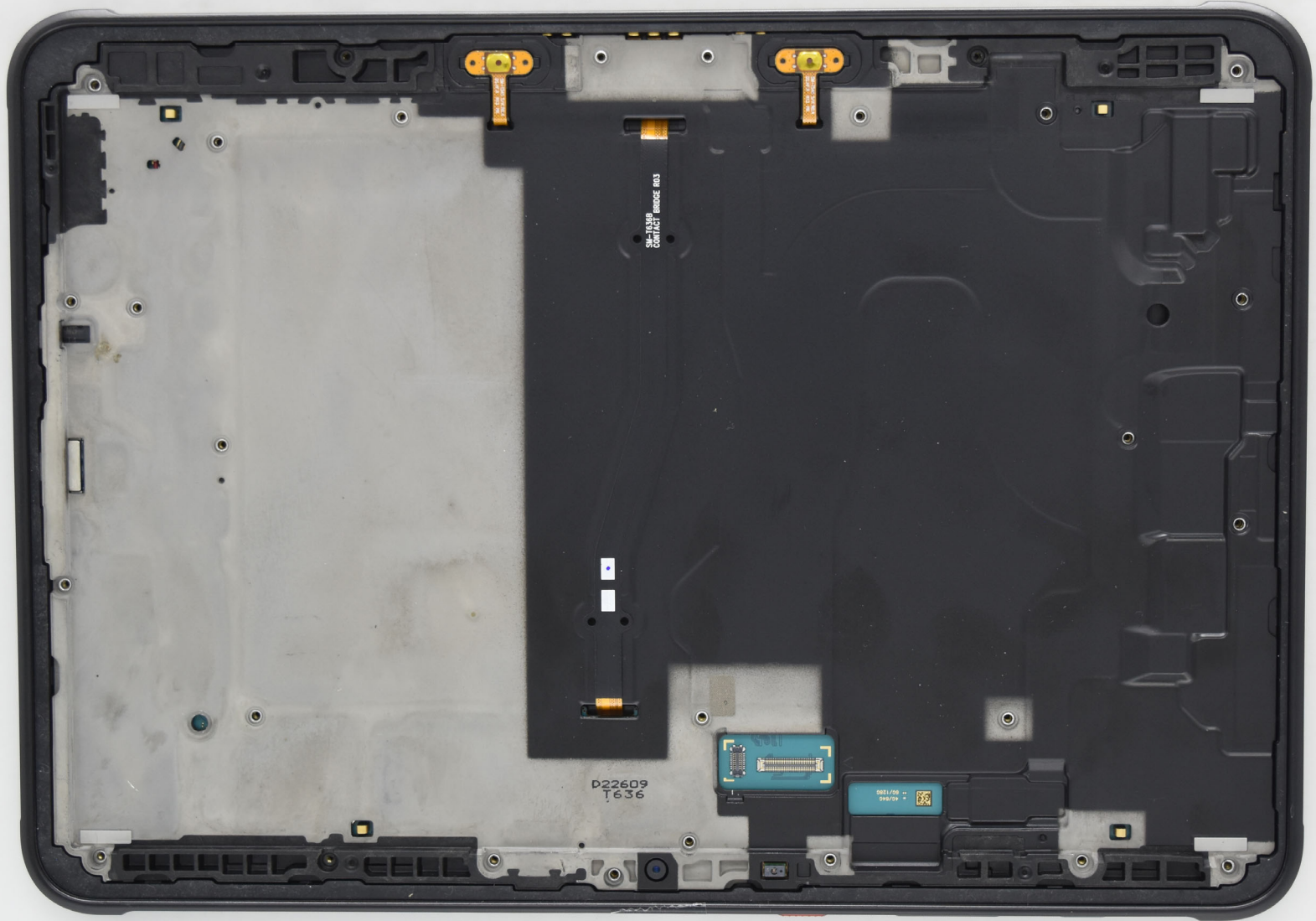


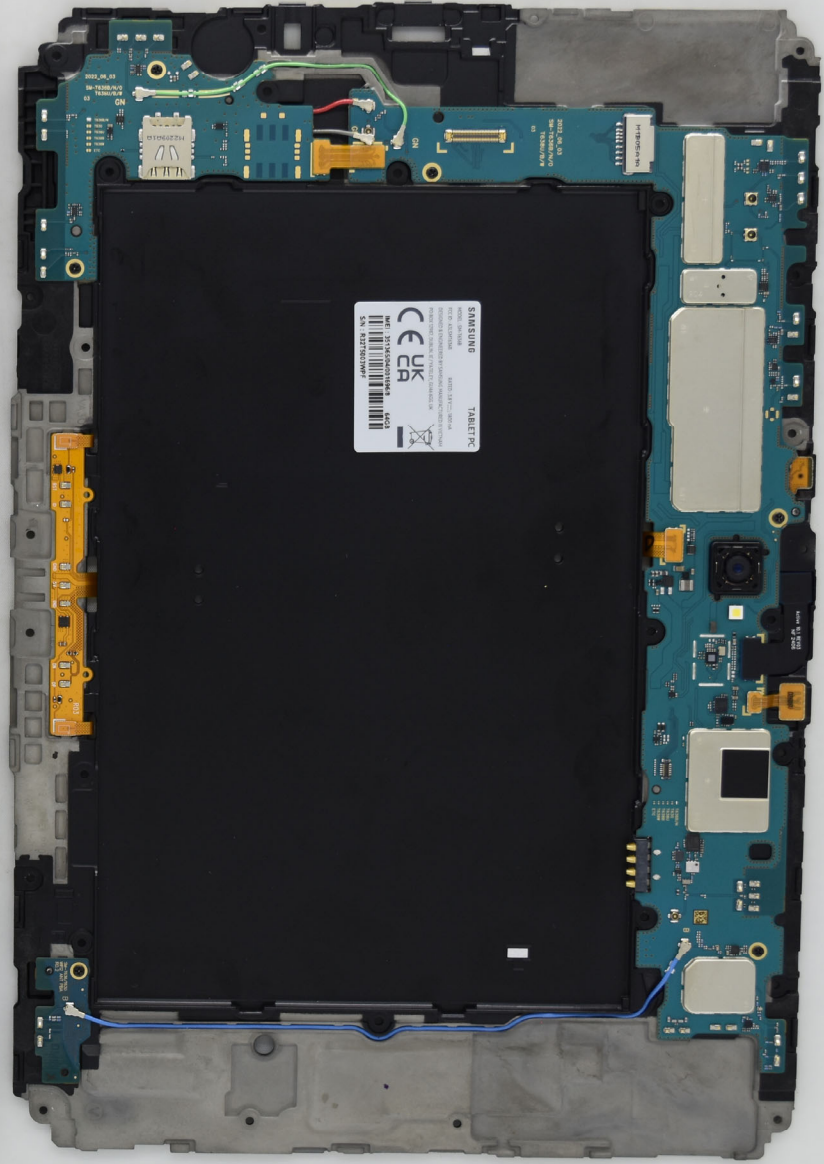
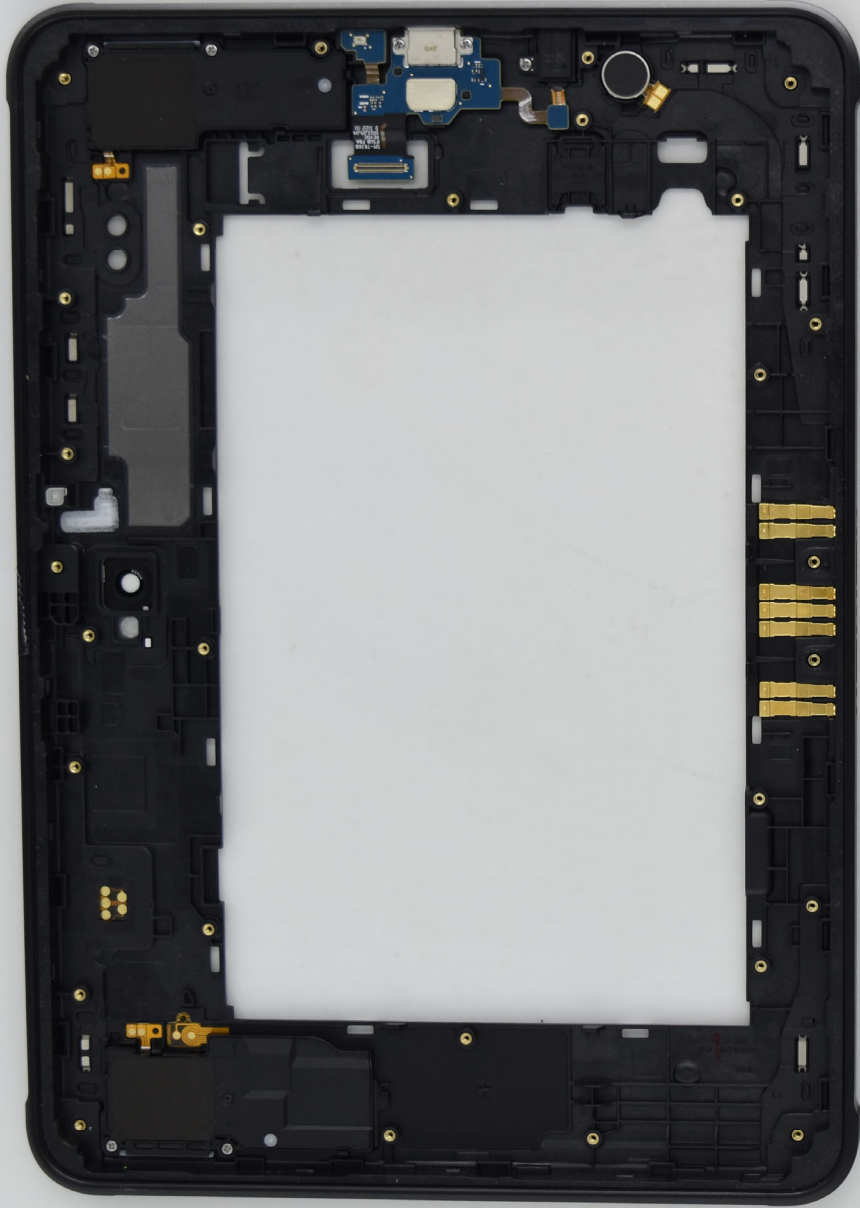
E 9508 V1 LH-220321 01



PBA

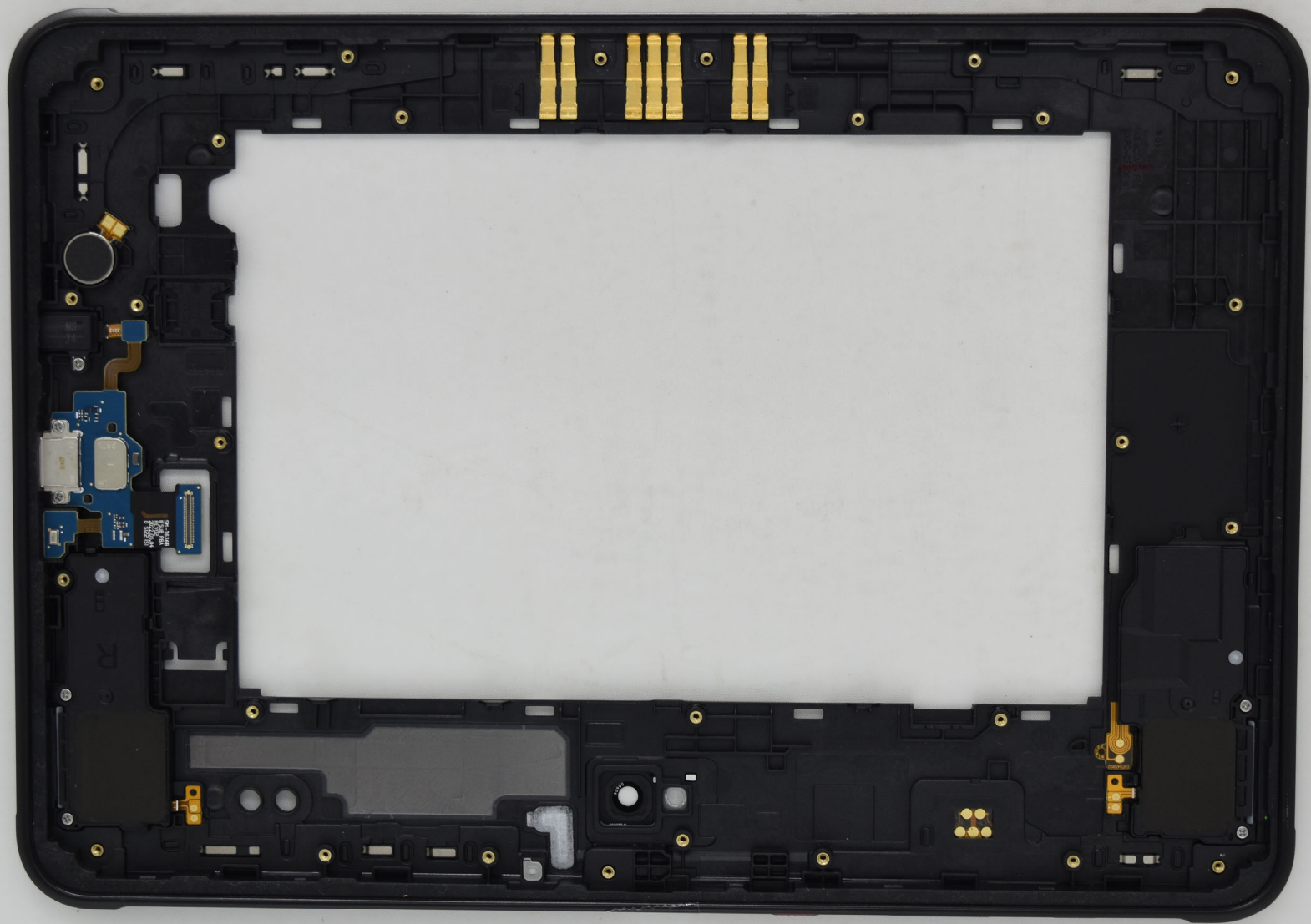
SM-1948_LCD
REV0.3
V-A-G 2215
02 11

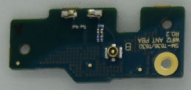
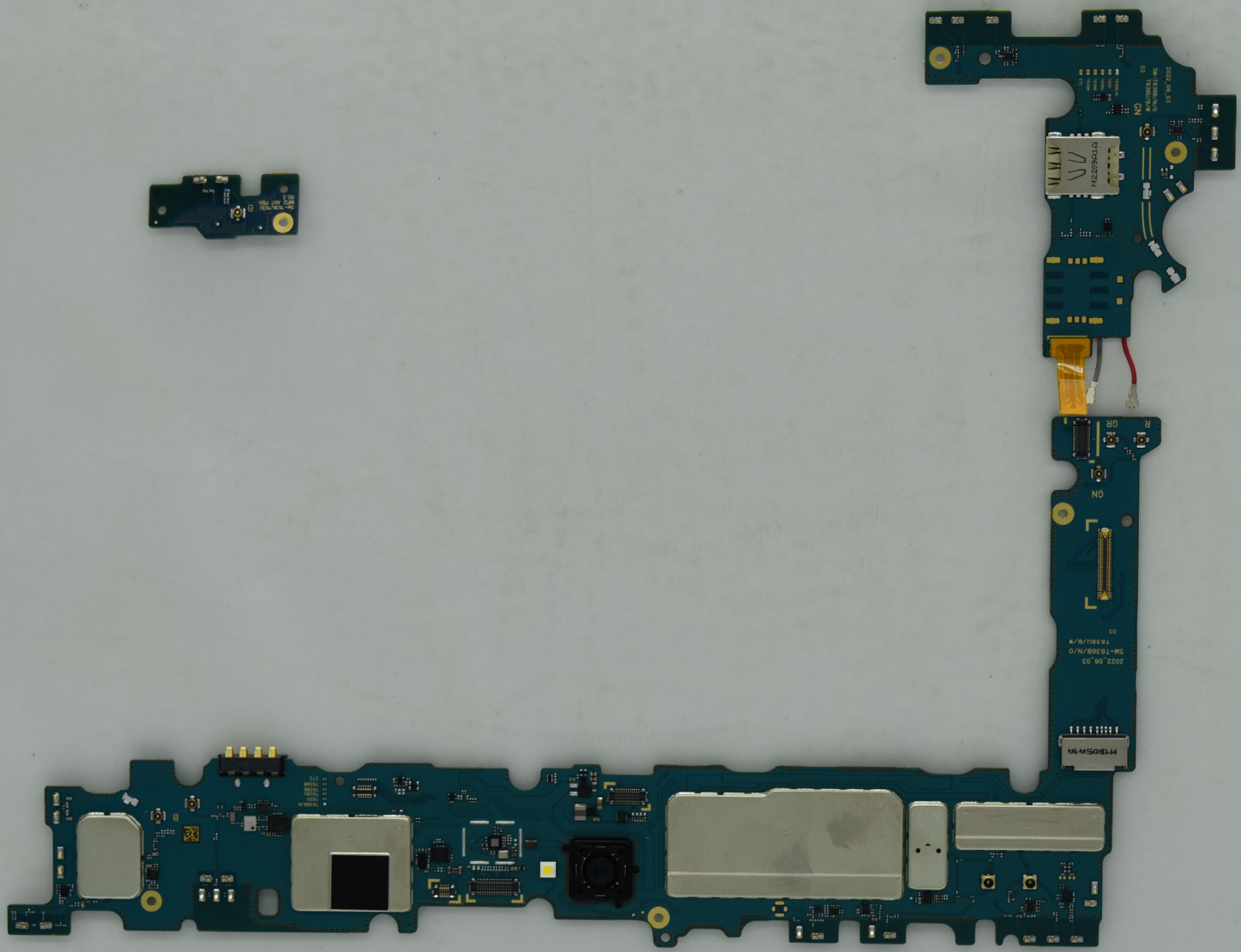






S/N: M327500MPF
IMEI: 2615240001963 4408
CE UK
SAMSUNG
TABLET PC
MODEL: SM-T500
P/C: 20120308
KOR: SA-111-1202-00





M1305A1A

2022_08_03
SM-T0508/N/D
T0508/B/A

D17082024

2022_08_03
M1305A1A