

20150415_SystemPerformanceCheck-D2450V2 SN 939

Frequency: 2450 MHz; Duty Cycle: 1:1; Room Ambient Temperature: 24.0°C; Liquid Temperature: 23.0°C
 Medium parameters used: $f = 2450$ MHz; $\sigma = 1.981$ S/m; $\epsilon_r = 50.749$; $\rho = 1000$ kg/m³

DASY5 Configuration:

- Area Scan Setting: Find Secondary Maximum Within: 2.0 dB and with a peak SAR value greater than 0.0012W/kg
- Averaged Fast SAR: Polynomial fit
- Electronics: DAE4 Sn1468; Calibrated: 2015-01-12
- Probe: EX3DV4 - SN7330; ConvF(7.32, 7.32, 7.32); Calibrated: 2015-02-12;
- Sensor-Surface: 2.5mm (Mechanical Surface Detection), Sensor-Surface: 2mm (Mechanical Surface Detection)
- Phantom: ELI v6.0; Type: QDOVA003AA; Serial: TP:2013

Body/Pin=100 mW 2/Area Scan (81x71x1): Interpolated grid: dx=1.200 mm, dy=1.200 mm

Reference Value = 64.22 V/m; Power Drift = 0.03 dB

Fast SAR: SAR(1 g) = 5.25 W/kg; SAR(10 g) = 2.28 W/kg

Maximum value of SAR (interpolated) = 7.75 W/kg

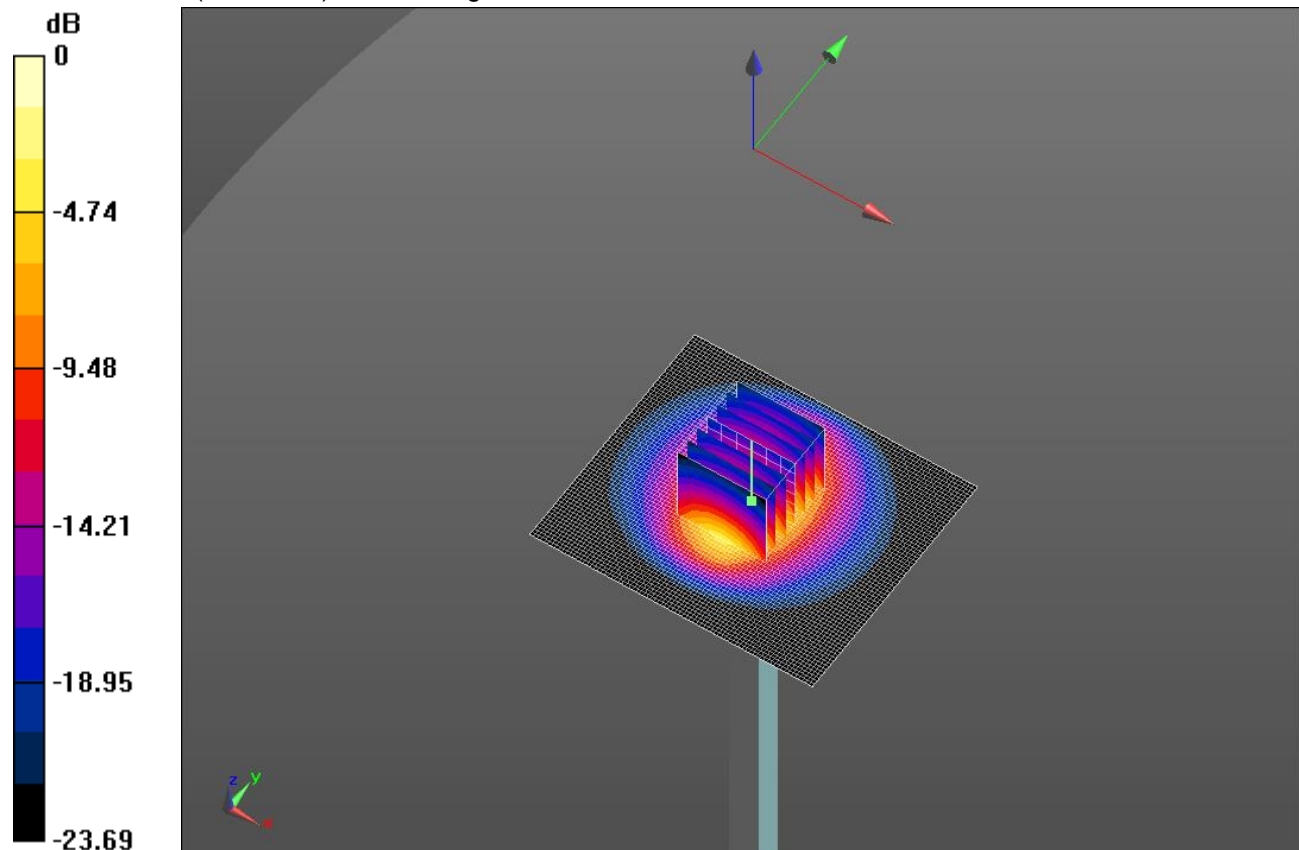
Body/Pin=100 mW 2/Zoom Scan (7x7x7) (7x7x7)/Cube 0: Measurement grid: dx=5mm, dy=5mm, dz=5mm

Reference Value = 64.22 V/m; Power Drift = 0.03 dB

Peak SAR (extrapolated) = 11.2 W/kg

SAR(1 g) = 5.28 W/kg; SAR(10 g) = 2.4 W/kg

Maximum value of SAR (measured) = 8.08 W/kg



0 dB = 8.08 W/kg = 9.07 dBW/kg

20150415_SystemPerformanceCheck-D2450V2 SN 939

Frequency: 2450 MHz; Duty Cycle: 1:1

Body/Pin=100 mW 2/Z Scan (1x1x21): Measurement grid: dx=20mm, dy=20mm, dz=5mm
Maximum value of SAR (measured) = 6.96 W/kg

