

Wi-Fi 2.4GHz

Frequency: 2412 MHz; Duty Cycle: 1:1; Room Ambient Temperature: 24.0°C; Liquid Temperature: 23.0°C
 Medium parameters used (interpolated): $f = 2412 \text{ MHz}$; $\sigma = 1.931 \text{ S/m}$; $\epsilon_r = 50.888$; $\rho = 1000 \text{ kg/m}^3$

DASY5 Configuration:

- Area Scan Setting: Find Secondary Maximum Within: 2.0 dB and with a peak SAR value greater than 0.0012W/kg
- Electronics: DAE4 Sn1468; Calibrated: 2015-01-12
- Probe: EX3DV4 - SN7330; ConvF(7.32, 7.32, 7.32); Calibrated: 2015-02-12;
- Sensor-Surface: 2.5mm (Mechanical Surface Detection)
- Phantom: ELI v6.0; Type: QDOVA003AA; Serial: TP:2013

Rear/802.11b_ch 1/Area Scan (8x10x1): Measurement grid: dx=12mm, dy=12mm

Maximum value of SAR (measured) = 1.58 W/kg

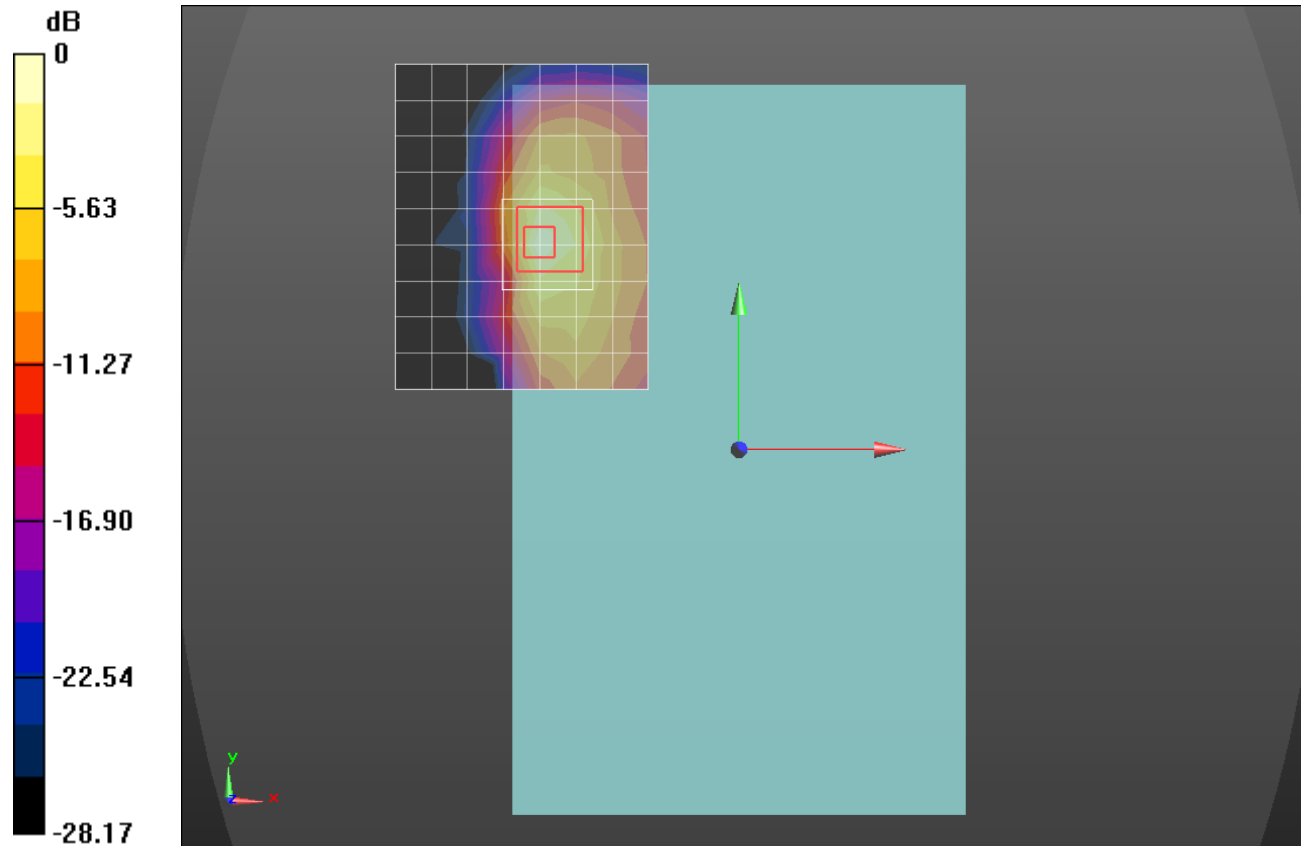
Rear/802.11b_ch 1/Zoom Scan (7x7x7)/Cube 0: Measurement grid: dx=5mm, dy=5mm, dz=5mm

Reference Value = 29.02 V/m; Power Drift = 0.04 dB

Peak SAR (extrapolated) = 2.99 W/kg

SAR(1 g) = 0.955 W/kg; SAR(10 g) = 0.383 W/kg

Maximum value of SAR (measured) = 1.61 W/kg



0 dB = 1.61 W/kg = 2.07 dBW/kg

Bluetooth

Frequency: 2441 MHz; Duty Cycle: 1:1.29033; Room Ambient Temperature: 24.0°C; Liquid Temperature: 23.0°C
 Medium parameters used (interpolated): $f = 2441$ MHz; $\sigma = 1.941$ S/m; $\epsilon_r = 51.803$; $\rho = 1000$ kg/m³
 DASY5 Configuration:

- Area Scan Setting: Find Secondary Maximum Within: 2.0 dB and with a peak SAR value greater than 0.0012W/kg
- Electronics: DAE4 Sn1447; Calibrated: 2014-08-25
- Probe: EX3DV4 - SN7313; ConvF(7.17, 7.17, 7.17); Calibrated: 2014-08-27;
- Sensor-Surface: 2.5mm (Mechanical Surface Detection)
- Phantom: ELI v5.0 (20deg probe tilt); Type: QDOVA002AA; Serial: TP:2005

Rear/802.11b_ch 1/Area Scan (8x10x1): Measurement grid: dx=12mm, dy=12mm

Maximum value of SAR (measured) = 0.0580 W/kg

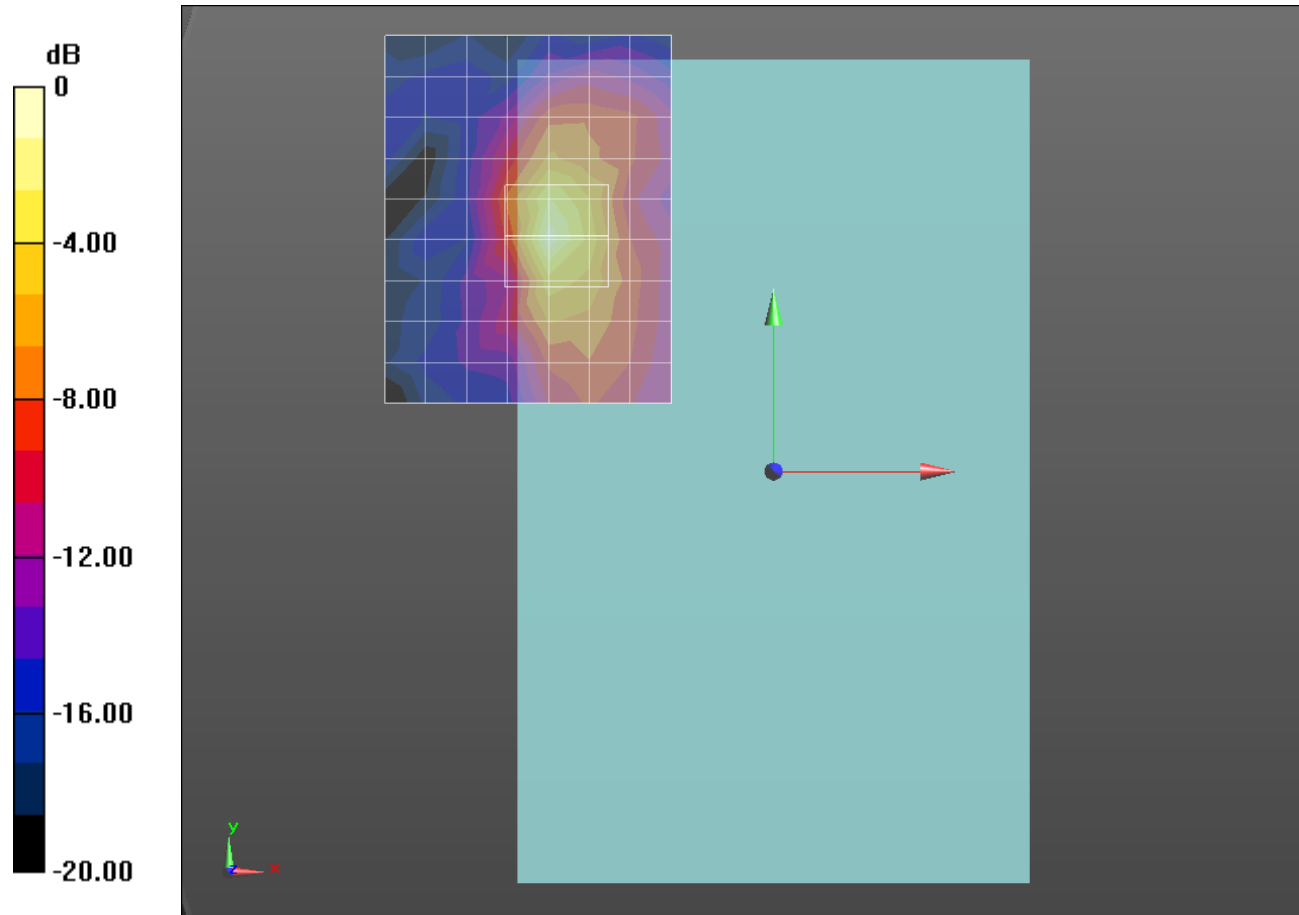
Rear/802.11b_ch 1/Zoom Scan (7x7x7)/Cube 0: Measurement grid: dx=5mm, dy=5mm, dz=5mm

Reference Value = 5.470 V/m; Power Drift = 0.07 dB

Peak SAR (extrapolated) = 0.107 W/kg

SAR(1 g) = 0.037 W/kg; SAR(10 g) = 0.014 W/kg

Maximum value of SAR (measured) = 0.0650 W/kg



0 dB = 0.0650 W/kg = -11.87 dBW/kg