

Wi-Fi 2.4GHz

Frequency: 2437 MHz; Duty Cycle: 1:1; Room Ambient Temperature: 24.0°C; Liquid Temperature: 23.0°C
 Medium parameters used (interpolated): $f = 2437$ MHz; $\sigma = 1.975$ S/m; $\epsilon_r = 51.438$; $\rho = 1000$ kg/m³

DASY5 Configuration:

- Area Scan Setting: Find Secondary Maximum Within: 2.0 dB and with a peak SAR value greater than 0.0012W/kg
- Electronics: DAE4 Sn1433; Calibrated: 4/14/2014
- Probe: EX3DV4 - SN3772; ConvF(6.43, 6.43, 6.43); Calibrated: 2/26/2014;
- Sensor-Surface: 2.5mm (Mechanical Surface Detection (Locations From Previous Scan Used)), Sensor-Surface: 2.5mm (Mechanical Surface Detection)
- Phantom: ELI v4.0 (B); Type: QDOVA001BB; Serial: 1099

Rear/802.11b_ch 6 /Area Scan (10x9x1): Measurement grid: dx=12mm, dy=12mm

Maximum value of SAR (measured) = 1.46 W/kg

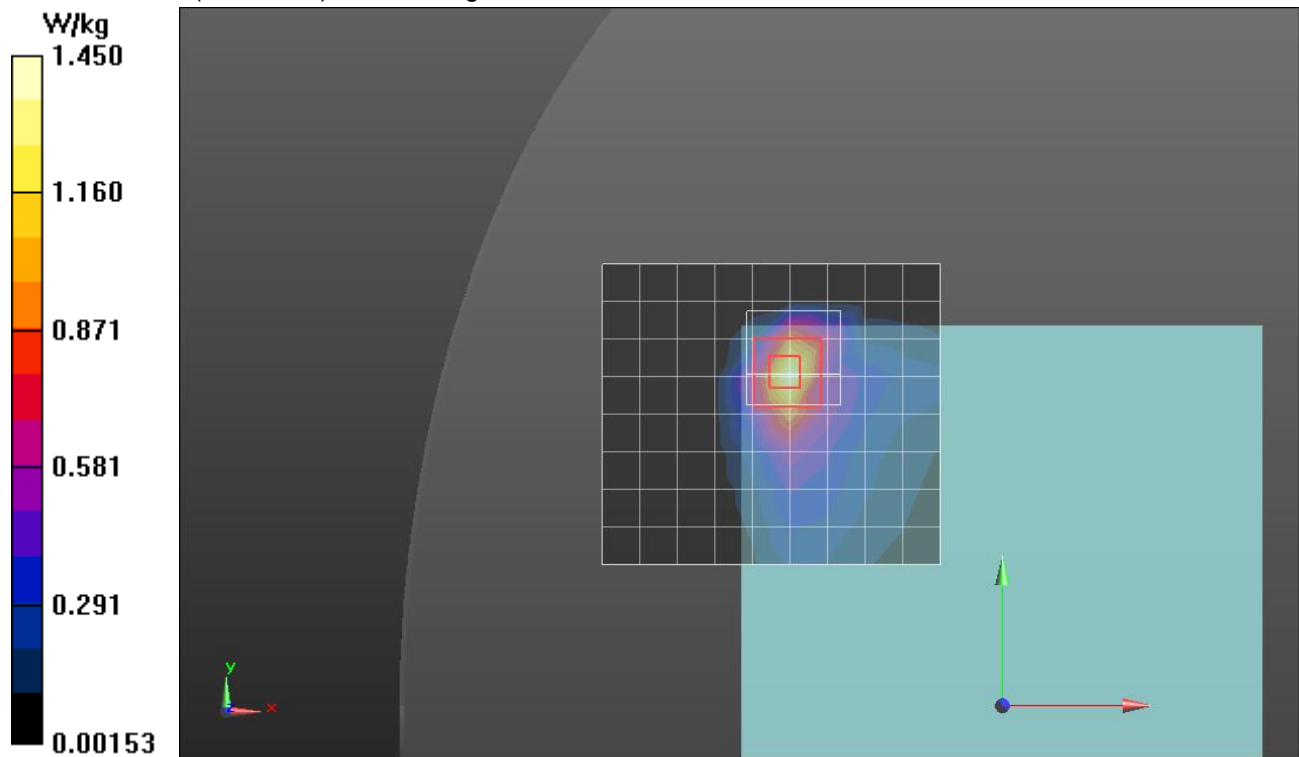
Rear/802.11b_ch 6/Zoom Scan (7x7x7)/Cube 0: Measurement grid: dx=5mm, dy=5mm, dz=5mm

Reference Value = 26.96 V/m; Power Drift = 0.10 dB

Peak SAR (extrapolated) = 2.37 W/kg

SAR(1 g) = 1.02 W/kg; SAR(10 g) = 0.461 W/kg

Maximum value of SAR (measured) = 1.45 W/kg



Wi-Fi 5GHz (FCC)

Frequency: 5280 MHz; Duty Cycle: 1:1; Room Ambient Temperature: 24.0°C; Liquid Temperature: 23.0°C

Medium parameters used: $f = 5280 \text{ MHz}$; $\sigma = 5.192 \text{ S/m}$; $\epsilon_r = 48.59$; $\rho = 1000 \text{ kg/m}^3$

DASY5 Configuration:

- Area Scan Setting: Find Secondary Maximum Within: 2.0 dB and with a peak SAR value greater than 0.0012W/kg
- Electronics: DAE4 Sn1433; Calibrated: 4/14/2014
- Probe: EX3DV4 - SN3772; ConvF(4.03, 4.03, 4.03); Calibrated: 2/26/2014;
- Sensor-Surface: 2mm (Mechanical Surface Detection (Locations From Previous Scan Used)), Sensor-Surface: 2mm (Mechanical Surface Detection)
- Phantom: ELI v5.0 (A); Type: QDOVA001BB; Serial: 1117

Rear/802.11a ch 56/Area Scan (10x10x1): Measurement grid: dx=10mm, dy=10mm

Maximum value of SAR (measured) = 0.894 W/kg

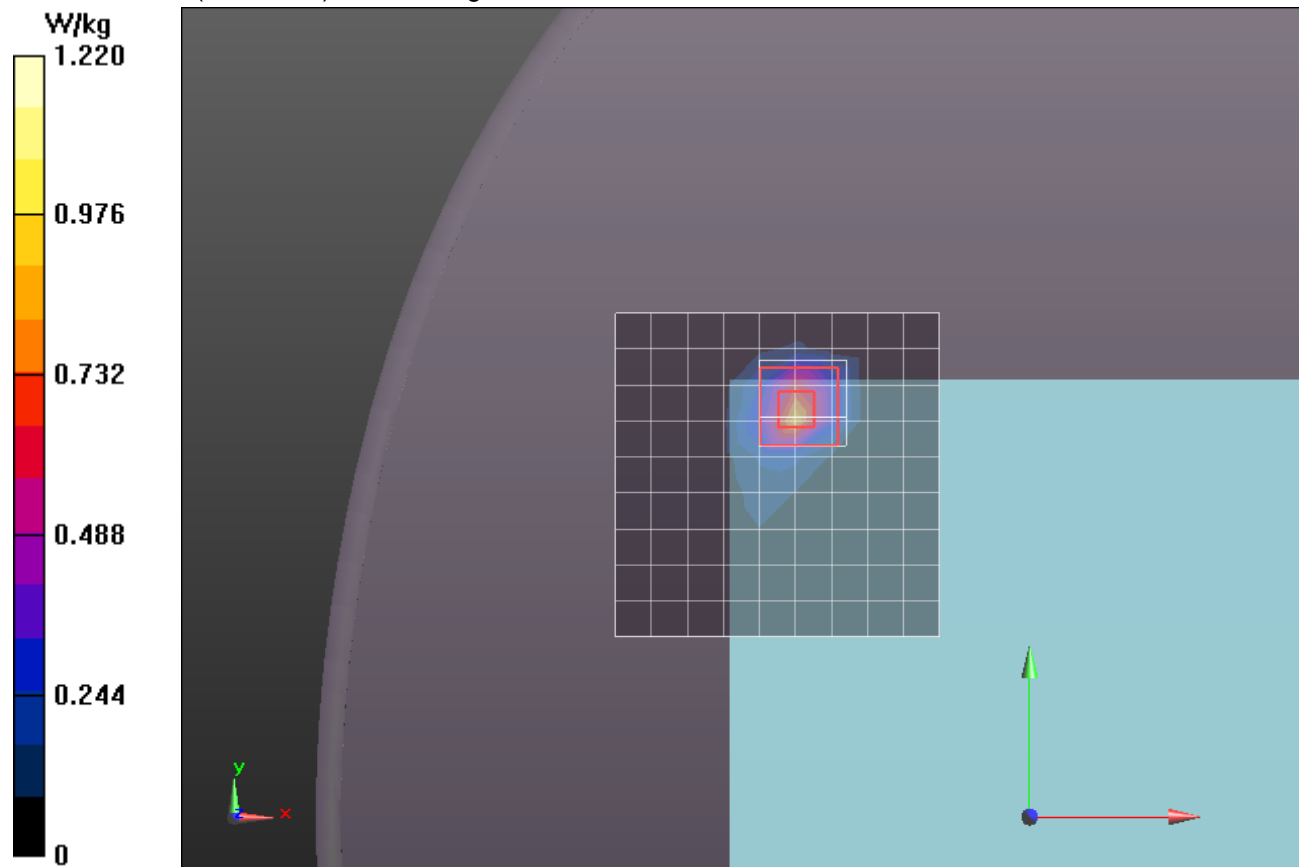
Rear/802.11a ch 56/Zoom Scan (7x7x12)/Cube 0: Measurement grid: dx=4mm, dy=4mm, dz=2mm

Reference Value = 13.68 V/m; Power Drift = 0.07 dB

Peak SAR (extrapolated) = 2.68 W/kg

SAR(1 g) = 0.625 W/kg; SAR(10 g) = 0.169 W/kg

Maximum value of SAR (measured) = 1.22 W/kg



Wi-Fi 5GHz

Frequency: 5670 MHz; Duty Cycle: 1:1; Room Ambient Temperature: 24.0°C; Liquid Temperature: 23.0°C

Medium parameters used: $f = 5670 \text{ MHz}$; $\sigma = 6.04 \text{ S/m}$; $\epsilon_r = 47.603$; $\rho = 1000 \text{ kg/m}^3$

DASY5 Configuration:

- Area Scan Setting: Find Secondary Maximum Within: 2.0 dB and with a peak SAR value greater than 0.0012W/kg
- Electronics: DAE4 Sn1433; Calibrated: 4/14/2014
- Probe: EX3DV4 - SN3772; ConvF(3.54, 3.54, 3.54); Calibrated: 2/26/2014;
- Sensor-Surface: 2mm (Mechanical Surface Detection)
- Phantom: ELI v5.0 (A); Type: QDOVA001BB; Serial: 1117

Rear/802.11n_HT40_ch 134/Area Scan (9x9x1): Measurement grid: dx=10mm, dy=10mm

Maximum value of SAR (measured) = 2.27 W/kg

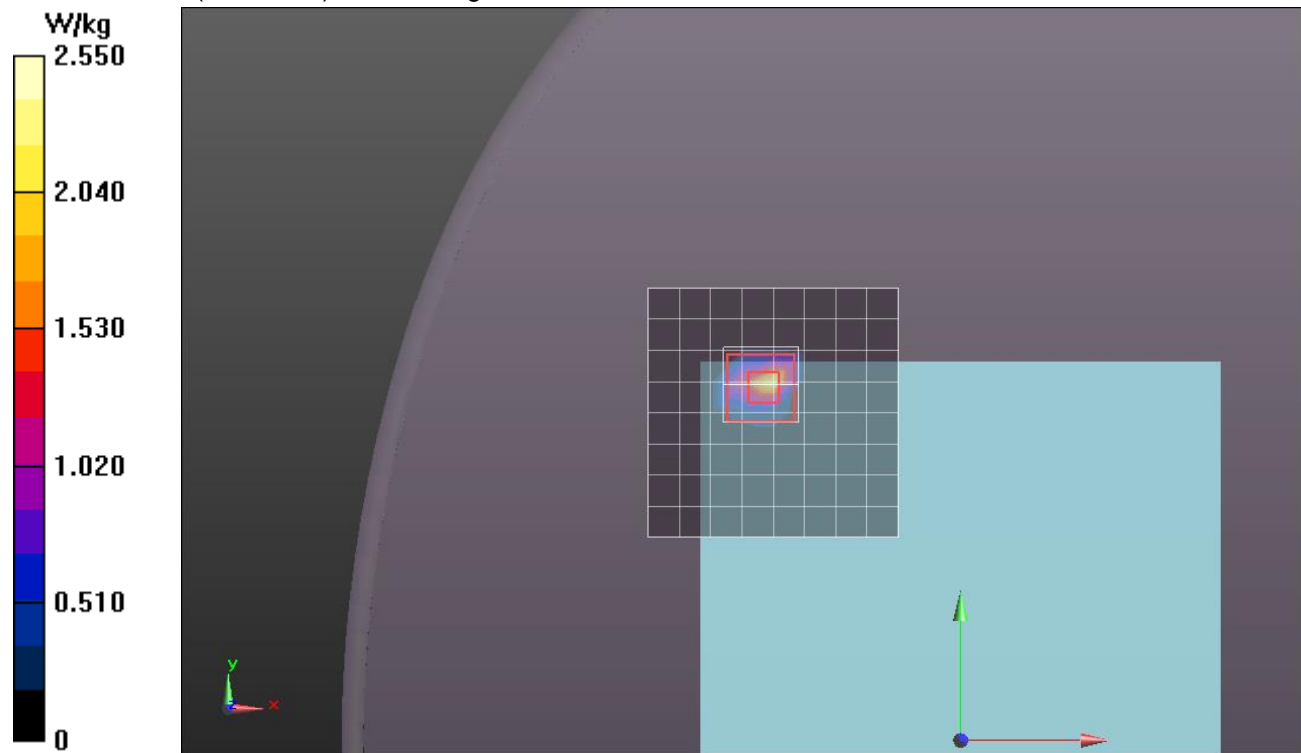
Rear/802.11n_HT40_ch 134/Zoom Scan (7x7x12)/Cube 0: Measurement grid: dx=4mm, dy=4mm, dz=2mm

Reference Value = 17.75 V/m; Power Drift = 0.12 dB

Peak SAR (extrapolated) = 5.83 W/kg

SAR(1 g) = 1.04 W/kg; SAR(10 g) = 0.213 W/kg

Maximum value of SAR (measured) = 2.55 W/kg



Wi-Fi 5GHz

Frequency: 5755 MHz; Duty Cycle: 1:1; Room Ambient Temperature: 24.0°C; Liquid Temperature: 23.0°C

Medium parameters used: $f = 5755 \text{ MHz}$; $\sigma = 5.758 \text{ S/m}$; $\epsilon_r = 46.901$; $\rho = 1000 \text{ kg/m}^3$

DASY5 Configuration:

- Area Scan Setting: Find Secondary Maximum Within: 2.0 dB and with a peak SAR value greater than 0.0012W/kg
- Electronics: DAE4 Sn1257; Calibrated: 9/29/2014
- Probe: EX3DV4 - SN3989; ConvF(4.23, 4.23, 4.23); Calibrated: 4/15/2014;
- Sensor-Surface: 2mm (Mechanical Surface Detection)
- Phantom: ELI v5.0 B; Type: QDOVA002AA; Serial: 1180

Rear/802.11n_HT40_ch 151/Area Scan (9x9x1): Measurement grid: dx=10mm, dy=10mm

Maximum value of SAR (measured) = 1.48 W/kg

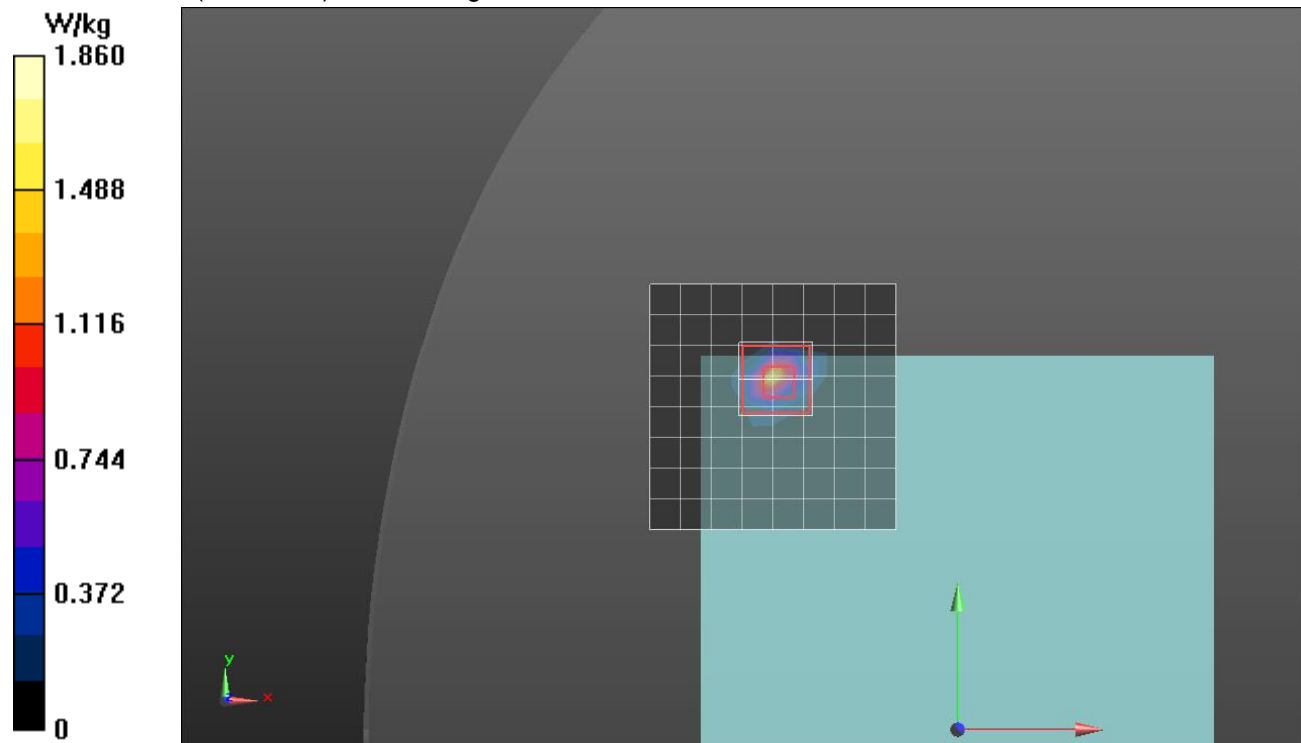
Rear/802.11n_HT40_ch 151/Zoom Scan (7x7x12)/Cube 0: Measurement grid: dx=4mm, dy=4mm, dz=2mm

Reference Value = 16.373 V/m; Power Drift = 0.02 dB

Peak SAR (extrapolated) = 4.42 W/kg

SAR(1 g) = 0.825 W/kg; SAR(10 g) = 0.173 W/kg

Maximum value of SAR (measured) = 1.86 W/kg



Bluetooth

Frequency: 2402 MHz; Duty Cycle: 1:1.29033; Room Ambient Temperature: 24.0°C; Liquid Temperature: 23.0°C
 Medium parameters used (interpolated): $f = 2402$ MHz; $\sigma = 1.946$ S/m; $\epsilon_r = 50.906$; $\rho = 1000$ kg/m³

DASY5 Configuration:

- Area Scan Setting: Find Secondary Maximum Within: 2.0 dB and with a peak SAR value greater than 0.0012W/kg
- Electronics: DAE4 Sn1433; Calibrated: 4/14/2014
- Probe: EX3DV4 - SN3772; ConvF(6.43, 6.43, 6.43); Calibrated: 2/26/2014;
- Sensor-Surface: 2.5mm (Mechanical Surface Detection)
- Phantom: ELI v4.0 (B); Type: QDOVA001BB; Serial: 1099

Rear/Bluetooth GFSK_ch 0/Area Scan (10x10x1): Measurement grid: dx=12mm, dy=12mm

[Info: Interpolated medium parameters used for SAR evaluation.](#)

Maximum value of SAR (measured) = 0.516 W/kg

Rear/Bluetooth GFSK_ch 0/Zoom Scan (7x7x7)/Cube 0: Measurement grid: dx=5mm, dy=5mm, dz=5mm

Reference Value = 16.331 V/m; Power Drift = -0.05 dB

Peak SAR (extrapolated) = 1.24 W/kg

SAR(1 g) = 0.446 W/kg; SAR(10 g) = 0.188 W/kg

[Info: Interpolated medium parameters used for SAR evaluation.](#)

Maximum value of SAR (measured) = 0.687 W/kg

