

PULL(HANDS ONLY)

**SAMSUNG**

CELL MADE IN MALAYSIA, ASSEMBLED IN KOREA  
BATTERIE FABRIQUÉ EN MALAISIE, ASSEMBLÉ EN CORÉE  
ENCAMBLADO EN COREA / MONTADO NA COREA  
三星手机有限公司为三星制造 / 韓國製造 / 韓國製

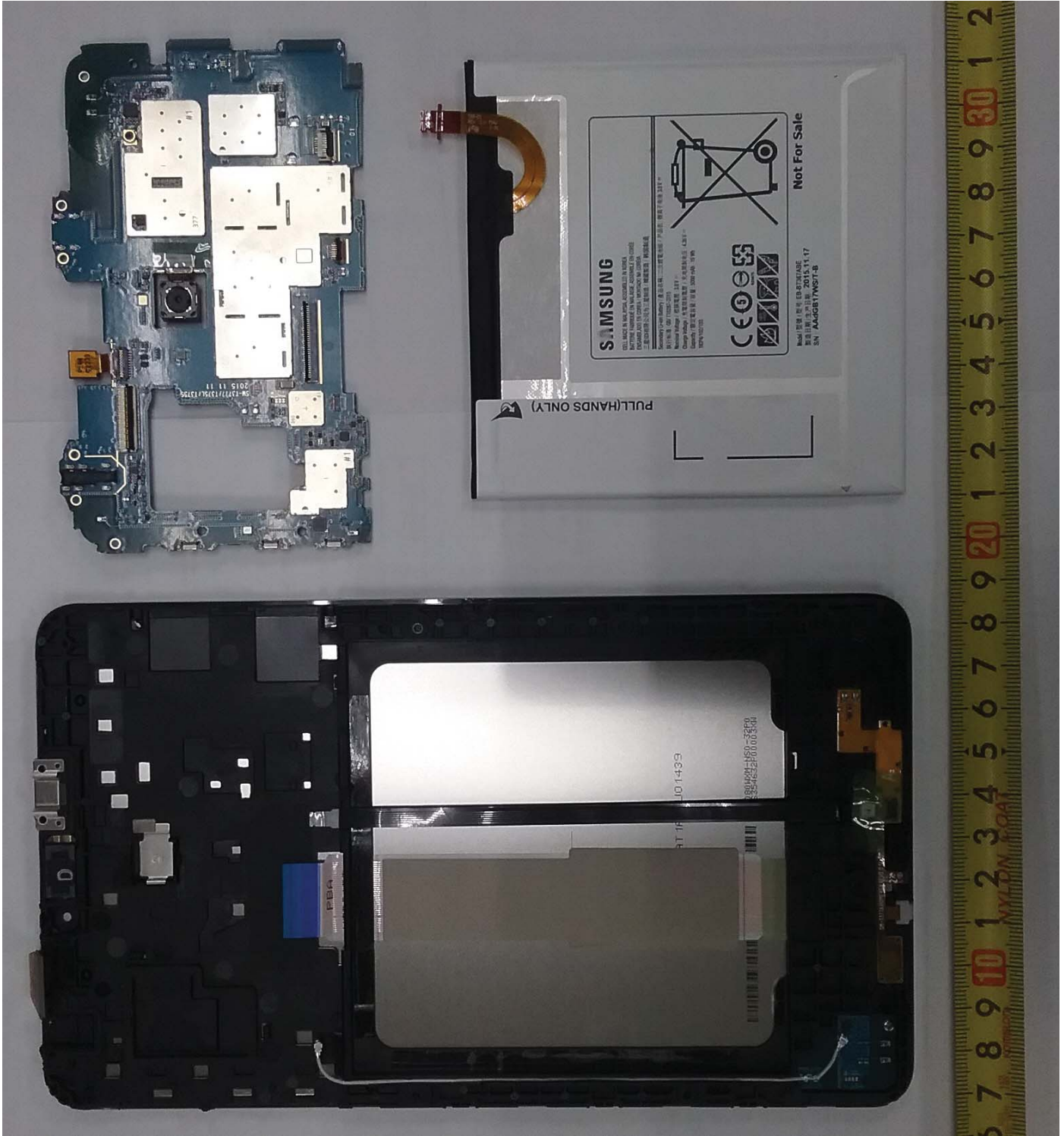
Secondary Li-Ion Battery / 產品名稱: 二次電池功能  
UL 1974 标准: GBU 710287-2013  
Nominal Voltage / 標稱電壓: 3.8V --  
Charge Voltage / 充電限制電壓 / 充電限制電壓: 4.2V  
Capacity / 額定電容量 / 容量: 5000 mAh / 19.9Wh  
KCP4-Y102/103

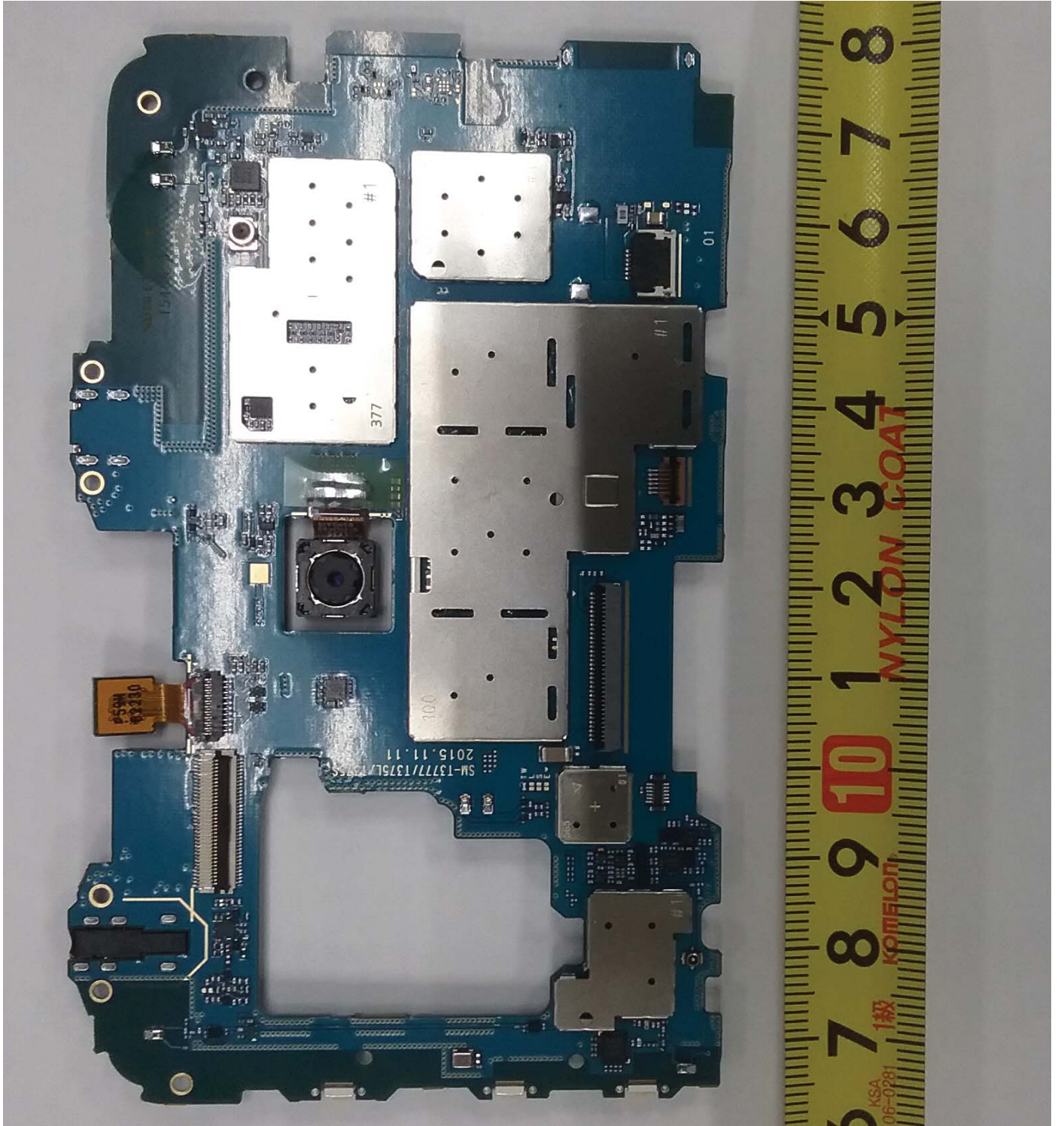


Model / 型號 / 型号: EB-BT367ABE  
製造日期 / 生产日期: 2015.11.17  
SN: AA4GB17WS/T-B



Not For Sale





SM-13777/1376L  
2015.11.11

377

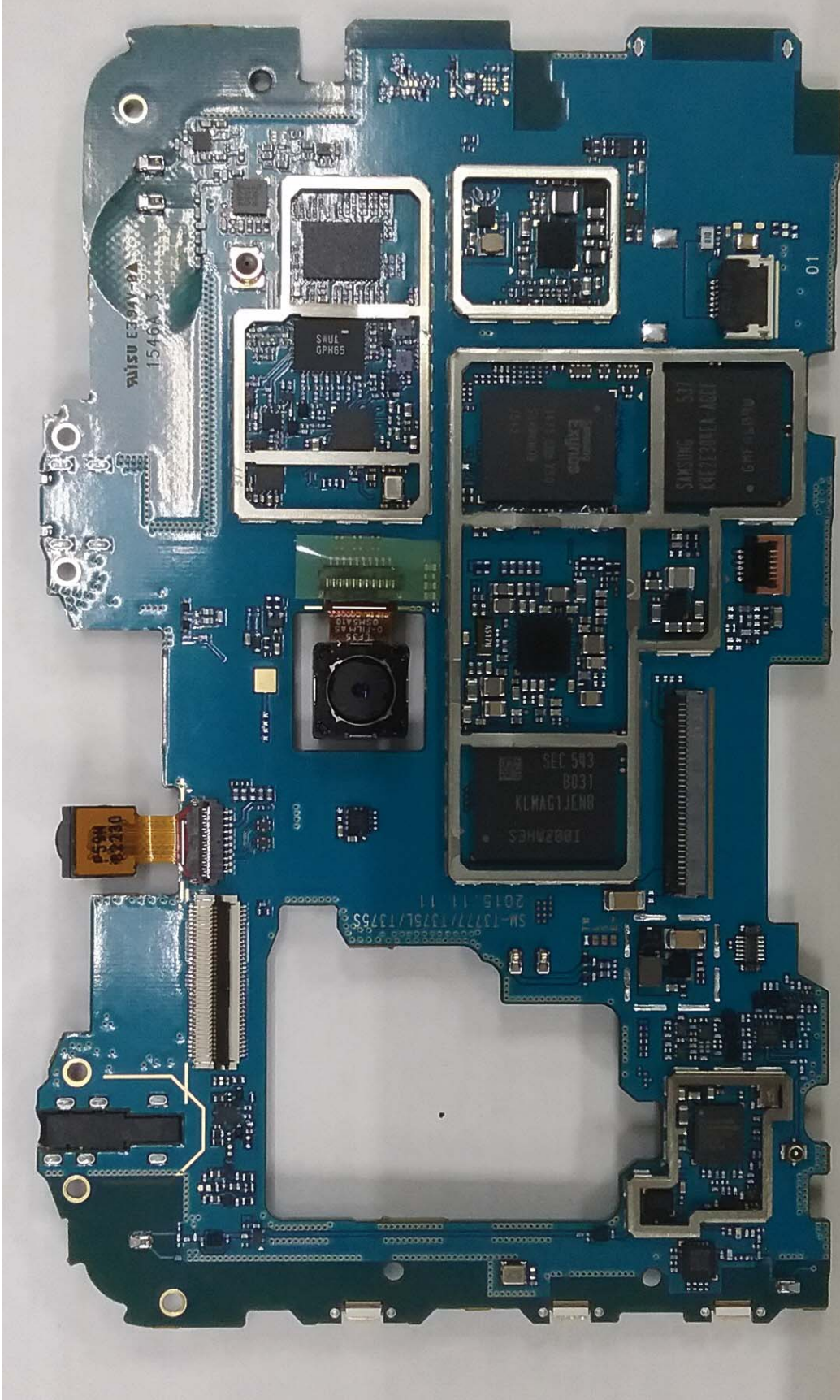
#1

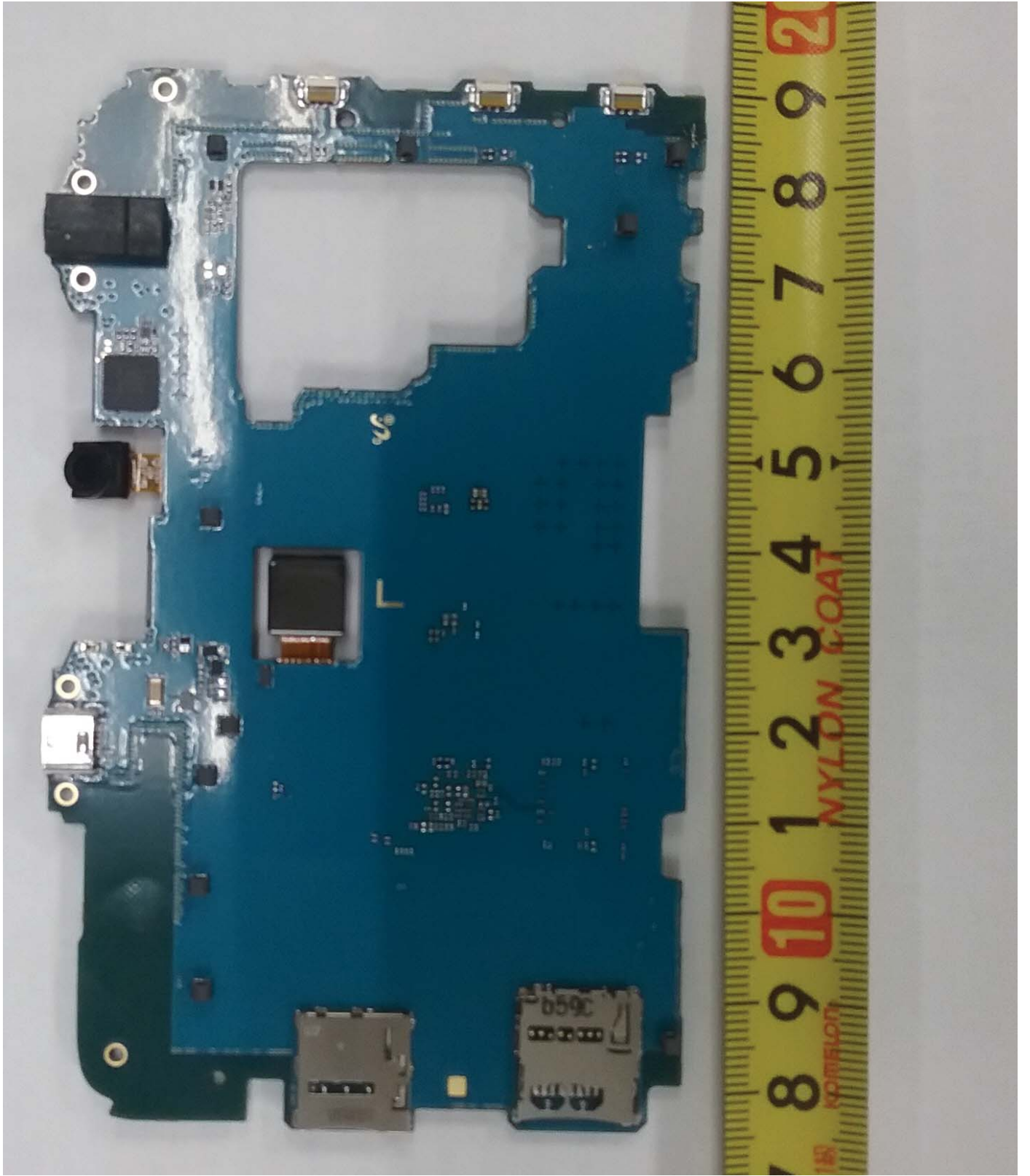
100

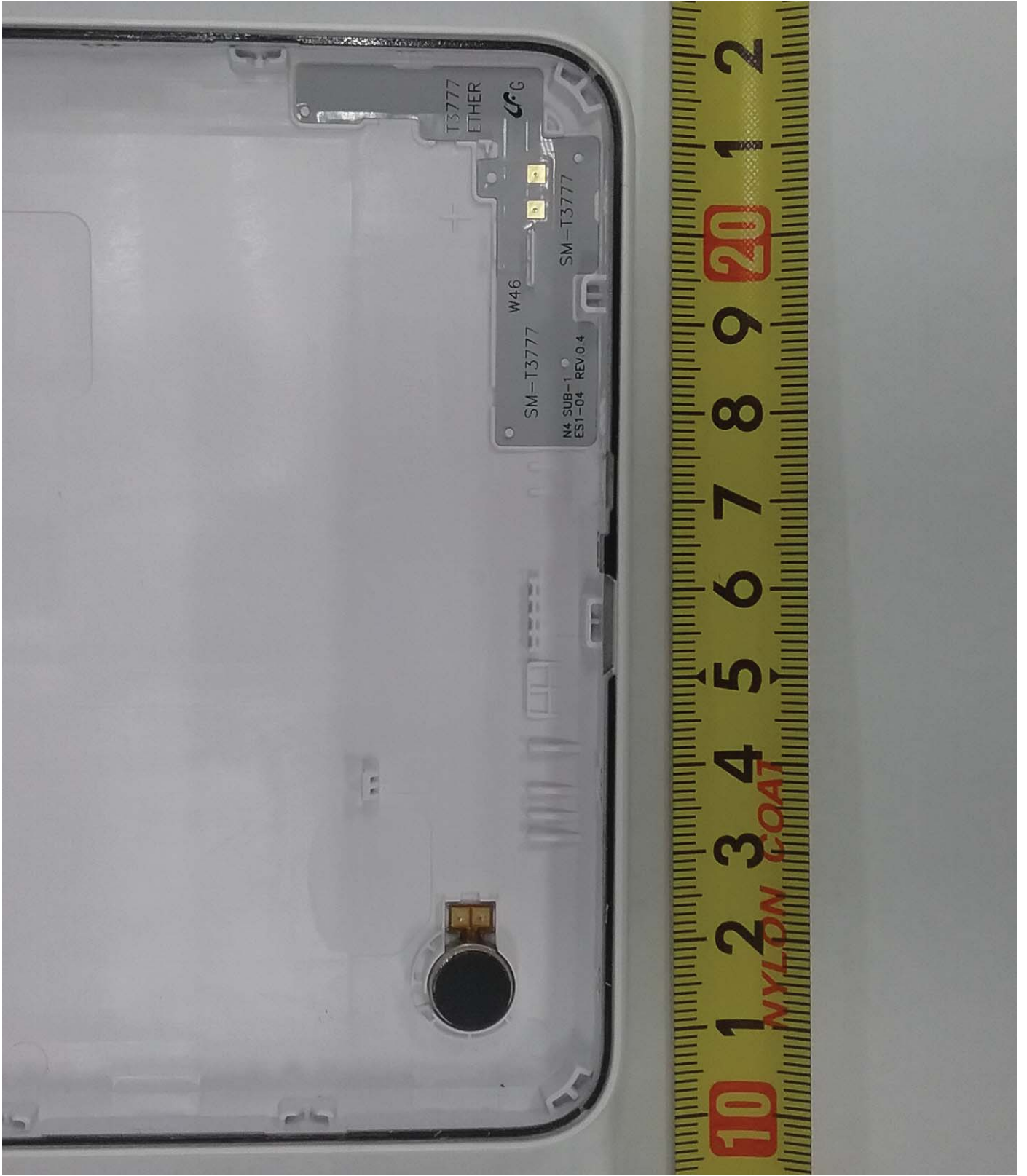
01

F59  
02210

7 8 9 10 1 2 3 4 5 6 7 8  
KSA 06-0281 1級 KOMELOTTI  
NYLON COAT







T3777

ETHER



W46

SM-T3777

N4 SUB-1  
ES1-04 REV.0.4

SM-T3777

2

1

20

9

8

7

6

5

4

3

2

1

10

NYLON COAT

