

GSM850

Frequency: 836.6 MHz; Duty Cycle: 1:8.30042; Room Ambient Temperature: 24.0°C; Liquid Temperature: 23.0°C
 Medium parameters used (interpolated): $f = 836.6$ MHz; $\sigma = 0.896$ S/m; $\epsilon_r = 41.675$; $\rho = 1000$ kg/m³

DASY5 Configuration:

- Area Scan Setting: Find Secondary Maximum Within: 2.0 dB and with a peak SAR value greater than 0.0012W/kg
- Electronics: DAE4 Sn1468; Calibrated: 2015-09-15
- Probe: EX3DV4 - SN7376; ConvF(9.99, 9.99, 9.99); Calibrated: 2015-09-02;
- Sensor-Surface: 2mm (Mechanical Surface Detection)
- Phantom: SAM (20deg probe tilt) with CRP v5.0(Right); Type: QD000P40CD; Serial: TP:1846

RHS/Touch_GSM Voice_ch190/Area Scan (10x15x1): Measurement grid: dx=15mm, dy=15mm
 Maximum value of SAR (measured) = 0.678 W/kg

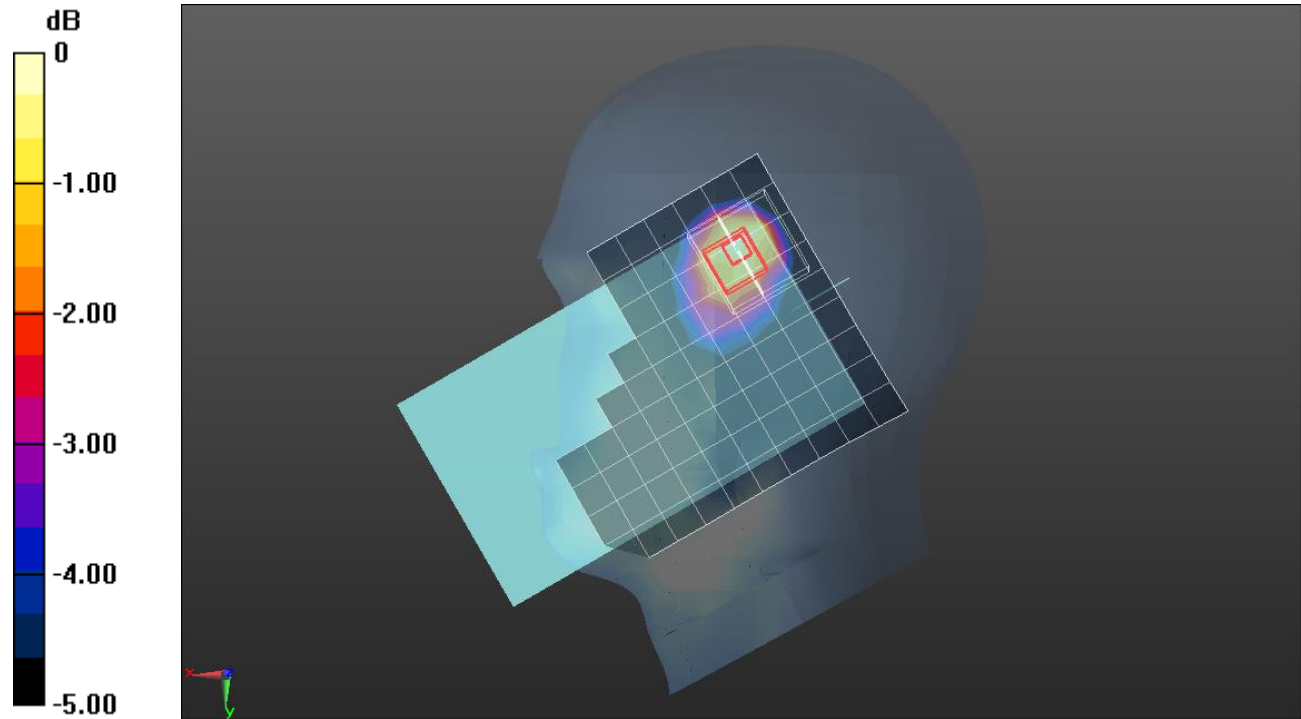
RHS/Touch_GSM Voice_ch190/Zoom Scan (6x6x7)/Cube 0: Measurement grid: dx=8mm, dy=8mm, dz=5mm

Reference Value = 28.14 V/m; Power Drift = 0.00 dB

Peak SAR (extrapolated) = 0.854 W/kg

SAR(1 g) = 0.536 W/kg; SAR(10 g) = 0.356 W/kg

Maximum value of SAR (measured) = 0.677 W/kg



0 dB = 0.677 W/kg = -1.69 dBW/kg

GSM 850

Frequency: 824.4 MHz; Duty Cycle: 1:8.00018; Room Ambient Temperature: 24.0°C; Liquid Temperature: 23.0°C
 Medium parameters used: $f = 825 \text{ MHz}$; $\sigma = 0.979 \text{ S/m}$; $\epsilon_r = 53.6$; $\rho = 1000 \text{ kg/m}^3$

DASY5 Configuration:

- Area Scan Setting: Find Secondary Maximum Within: 2.0 dB and with a peak SAR value greater than 0.0012W/kg
- Electronics: DAE4 Sn1468; Calibrated: 2015-09-15
- Probe: EX3DV4 - SN7376; ConvF(10.07, 10.07, 10.07); Calibrated: 2015-09-02;
- Sensor-Surface: 2mm (Mechanical Surface Detection)
- Phantom: ELI v6.0; Type: QDOVA003AA; Serial: TP:xxxx

Rear/GPRS 1 slots_ch128/Area Scan (12x10x1): Measurement grid: dx=15mm, dy=15mm
 Maximum value of SAR (measured) = 1.14 W/kg

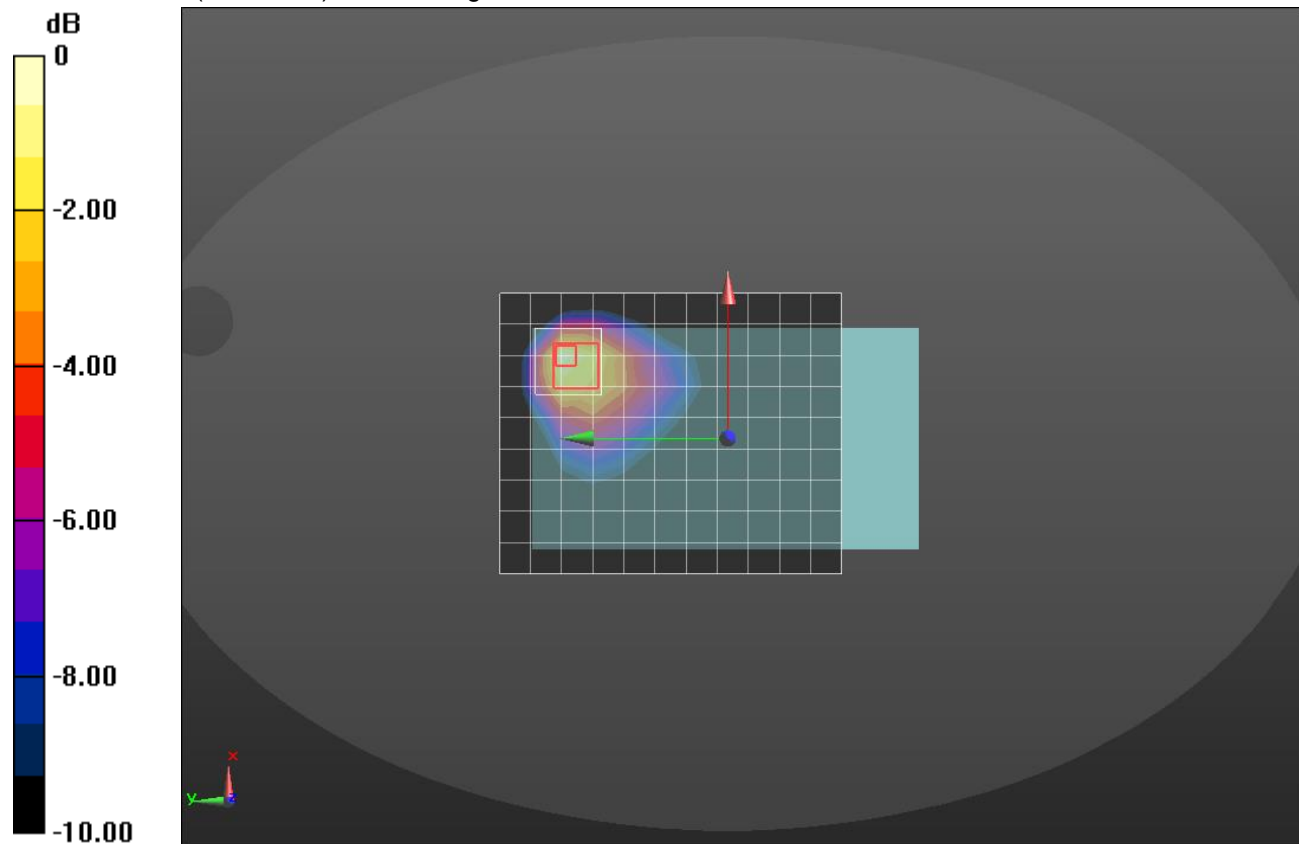
Rear/GPRS 1 slots_ch128/Zoom Scan (5x5x7)/Cube 0: Measurement grid: dx=8mm, dy=8mm, dz=5mm

Reference Value = 34.36 V/m; Power Drift = -0.03 dB

Peak SAR (extrapolated) = 1.99 W/kg

SAR(1 g) = 0.846 W/kg; SAR(10 g) = 0.481 W/kg

Maximum value of SAR (measured) = 1.21 W/kg



0 dB = 1.21 W/kg = 0.83 dBW/kg

GSM 1900

Frequency: 1880 MHz; Duty Cycle: 1:8.30042; Room Ambient Temperature: 24.0°C; Liquid Temperature: 23.0°C
 Medium parameters used: $f = 1880 \text{ MHz}$; $\sigma = 1.43 \text{ S/m}$; $\epsilon_r = 39.24$; $\rho = 1000 \text{ kg/m}^3$

DASY5 Configuration:

- Area Scan Setting: Find Secondary Maximum Within: 2.0 dB and with a peak SAR value greater than 0.0012W/kg
- Electronics: DAE4 Sn1494; Calibrated: 2015-11-11
- Probe: EX3DV4 - SN7313; ConvF(7.85, 7.85, 7.85); Calibrated: 2015-12-30;
- Sensor-Surface: 2mm (Mechanical Surface Detection)
- Phantom: SAM Phantom CRP v5.0(Right); Type: QD000P40CD; Serial: TP:1855

RHS/Touch_GSM Voice_ch661/Area Scan (10x15x1): Measurement grid: $dx=15\text{mm}$, $dy=15\text{mm}$
 Maximum value of SAR (measured) = 1.21 W/kg

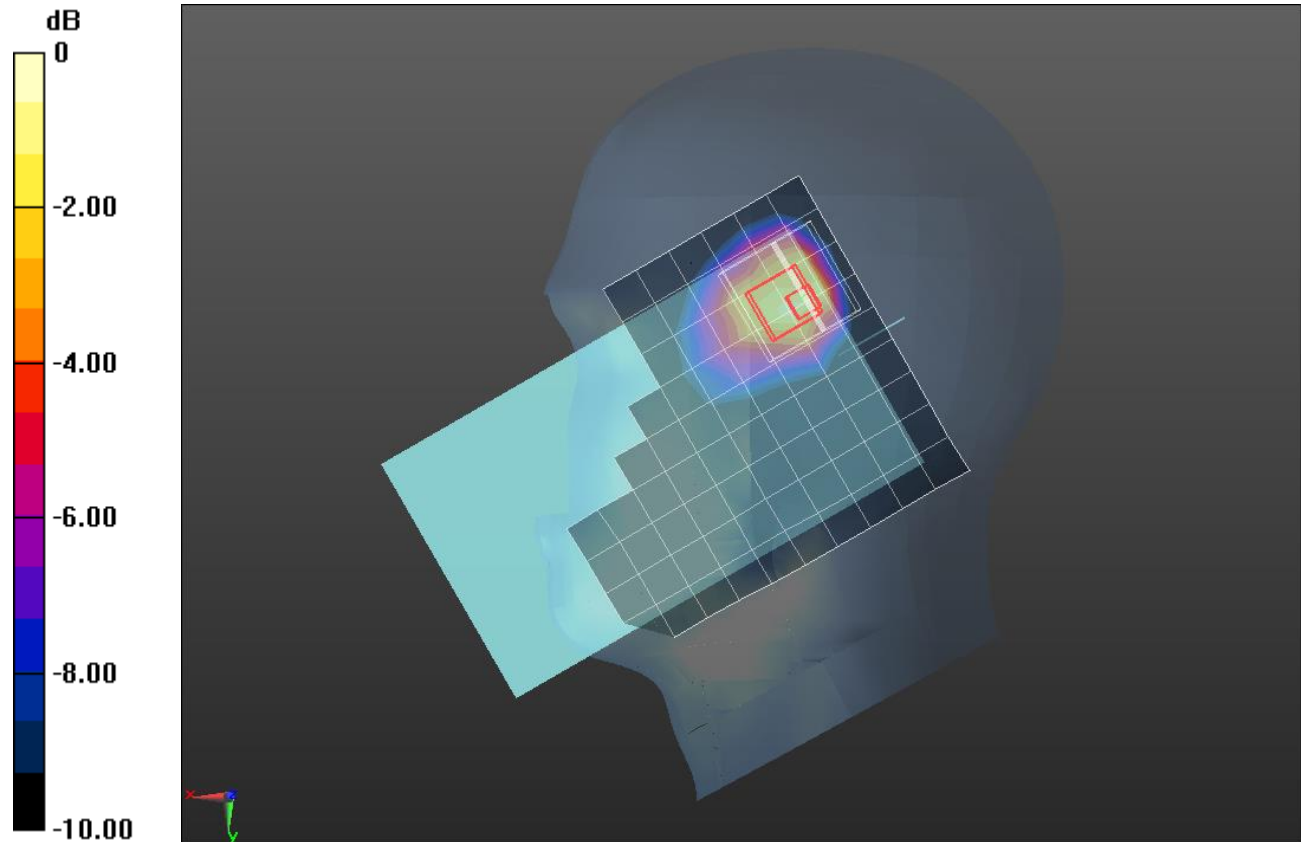
RHS/Touch_GSM Voice_ch661/Zoom Scan (6x6x7)/Cube 0: Measurement grid: $dx=8\text{mm}$, $dy=8\text{mm}$, $dz=5\text{mm}$

Reference Value = 29.70 V/m; Power Drift = 0.01 dB

Peak SAR (extrapolated) = 2.07 W/kg

SAR(1 g) = 0.948 W/kg; SAR(10 g) = 0.503 W/kg

Maximum value of SAR (measured) = 1.48 W/kg



0 dB = 1.48 W/kg = 1.70 dBW/kg

GSM 1900

Frequency: 1909.8 MHz; Duty Cycle: 1:8.00018; Room Ambient Temperature: 24.0°C; Liquid Temperature: 23.0°C
 Medium parameters used: $f = 1910 \text{ MHz}$; $\sigma = 1.592 \text{ S/m}$; $\epsilon_r = 53.752$; $\rho = 1000 \text{ kg/m}^3$

DASY5 Configuration:

- Area Scan Setting: Find Secondary Maximum Within: 2.0 dB and with a peak SAR value greater than 0.0012W/kg
- Electronics: DAE4 Sn1494; Calibrated: 2015-11-11
- Probe: EX3DV4 - SN7313; ConvF(7.54, 7.54, 7.54); Calibrated: 2015-12-30;
- Sensor-Surface: 2mm (Mechanical Surface Detection)
- Phantom: ELI v6.0; Type: QDOVA003AA; Serial: TP:xxxx

Rear/GPRS 1 Slots ch 810 0mm/Area Scan (12x10x1): Measurement grid: dx=15mm, dy=15mm
 Maximum value of SAR (measured) = 1.20 W/kg

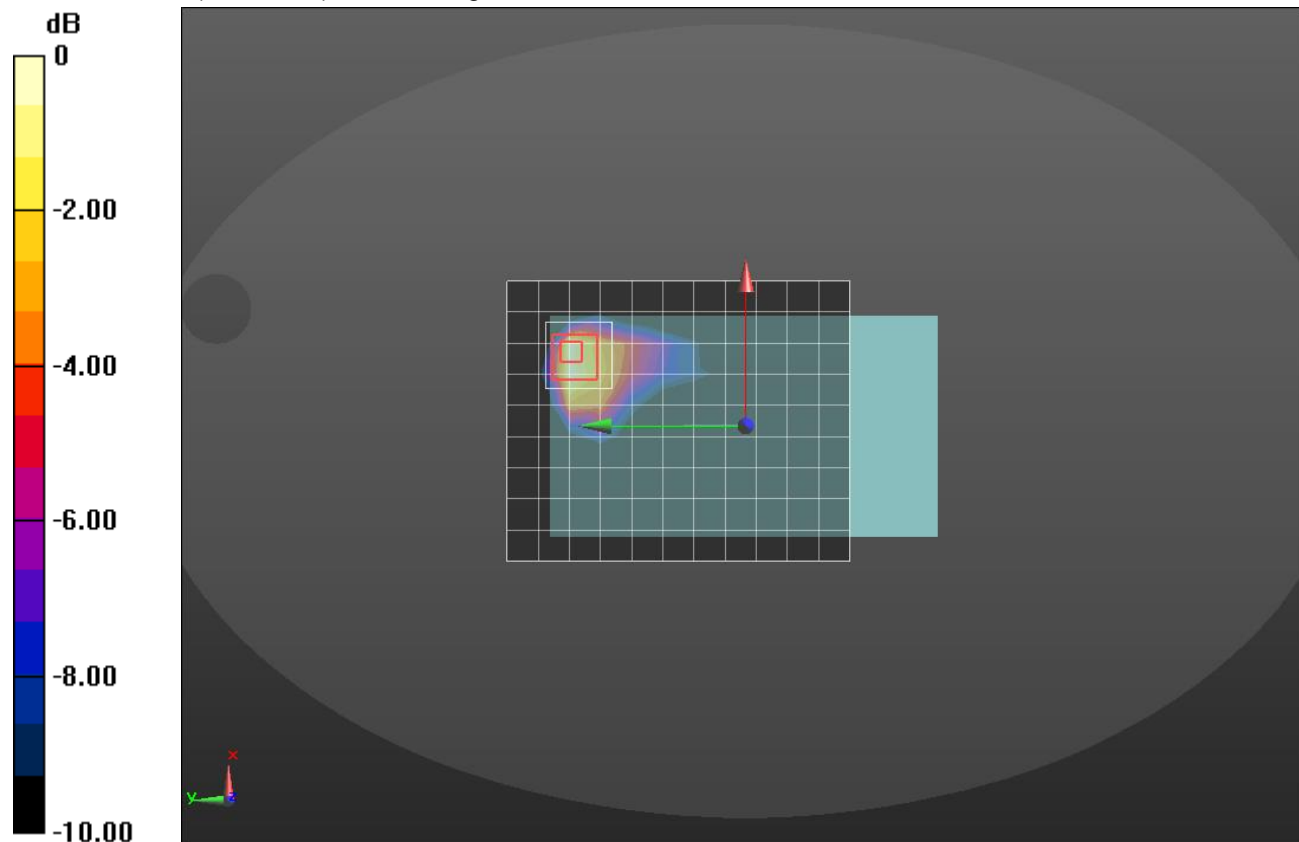
Rear/GPRS 1 Slots ch 810 0mm/Zoom Scan (5x5x7)/Cube 0: Measurement grid: dx=8mm, dy=8mm, dz=5mm

Reference Value = 28.00 V/m; Power Drift = 0.06 dB

Peak SAR (extrapolated) = 1.75 W/kg

SAR(1 g) = 0.818 W/kg; SAR(10 g) = 0.371 W/kg

Maximum value of SAR (measured) = 1.24 W/kg



0 dB = 1.24 W/kg = 0.93 dBW/kg

WCDMA Band V

Frequency: 836.6 MHz; Duty Cycle: 1:1; Room Ambient Temperature: 24.0°C; Liquid Temperature: 23.0°C

Medium parameters used (interpolated): $f = 836.6$ MHz; $\sigma = 0.884$ S/m; $\epsilon_r = 41.378$; $\rho = 1000$ kg/m³

DASY5 Configuration:

- Area Scan Setting: Find Secondary Maximum Within: 2.0 dB and with a peak SAR value greater than 0.0012W/kg
- Electronics: DAE4 Sn1468; Calibrated: 2015-09-15
- Probe: EX3DV4 - SN7376; ConvF(9.99, 9.99, 9.99); Calibrated: 2015-09-02;
- Sensor-Surface: 2.5mm (Mechanical Surface Detection)
- Phantom: SAM (20deg probe tilt) with CRP v5.0(Right); Type: QD000P40CD; Serial: TP:1846

RHS/Touch_RMC Rel .99_ch 4183/Area Scan (10x15x1): Measurement grid: dx=15mm, dy=15mm

Maximum value of SAR (measured) = 0.577 W/kg

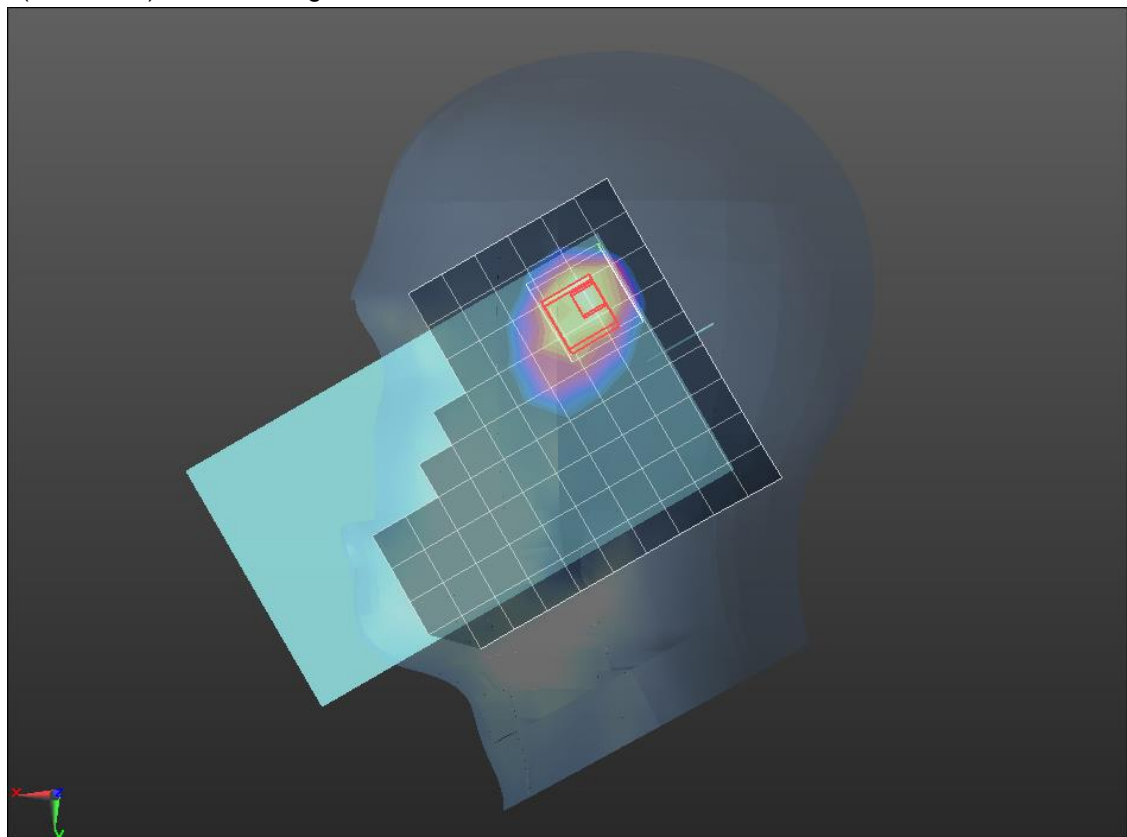
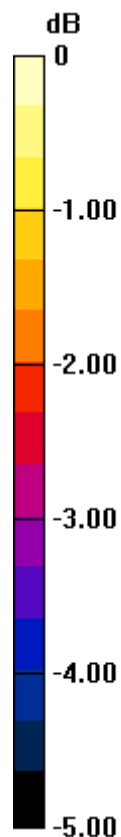
RHS/Touch_RMC Rel .99_ch 4183/Zoom Scan (5x5x7)/Cube 0: Measurement grid: dx=8mm, dy=8mm, dz=5mm

Reference Value = 25.27 V/m; Power Drift = 0.10 dB

Peak SAR (extrapolated) = 0.778 W/kg

SAR(1 g) = 0.506 W/kg; SAR(10 g) = 0.339 W/kg

Maximum value of SAR (measured) = 0.592 W/kg



0 dB = 0.592 W/kg = -2.28 dBW/kg

WCDMA Band V

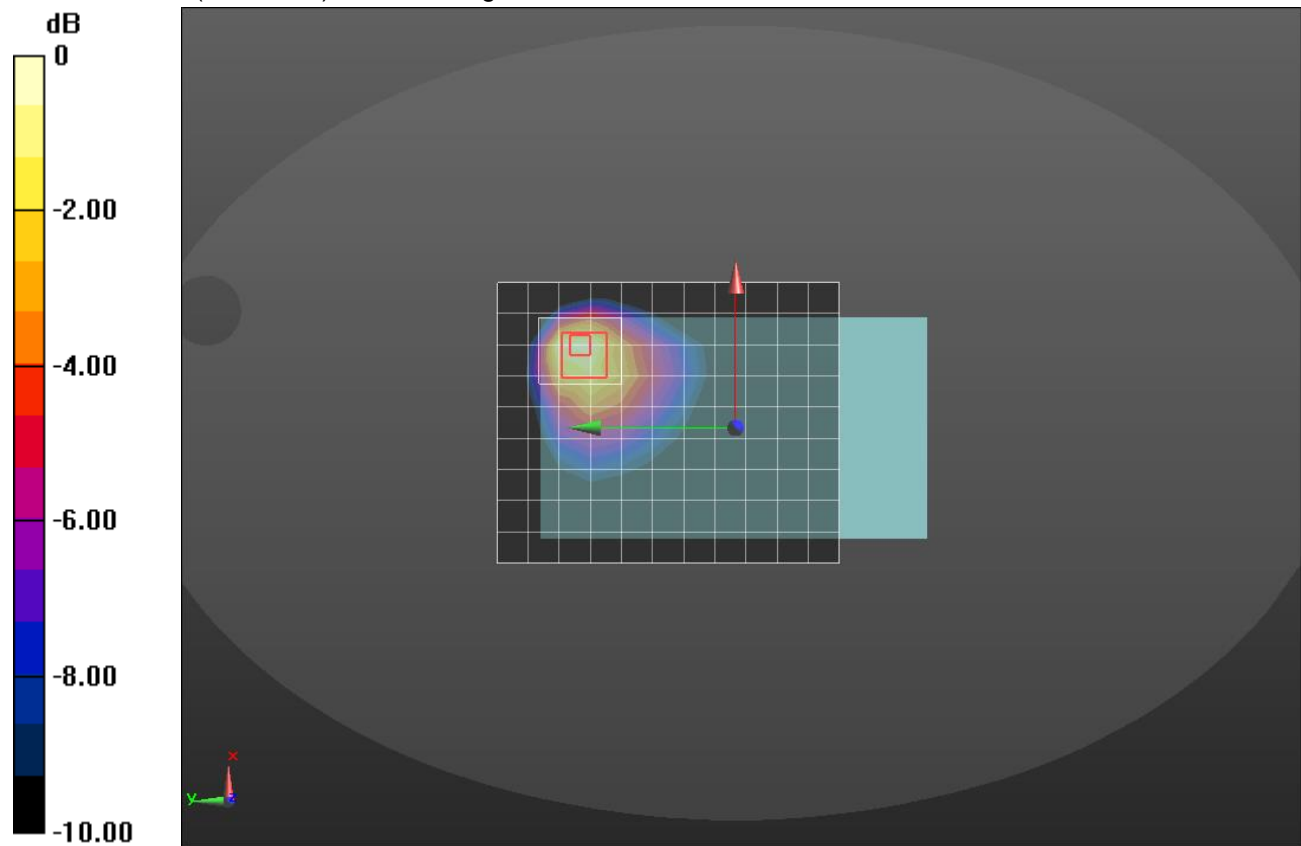
Frequency: 836.6 MHz; Duty Cycle: 1:1; Room Ambient Temperature: 24.0°C; Liquid Temperature: 23.0°C
 Medium parameters used (interpolated): $f = 836.6$ MHz; $\sigma = 1.009$ S/m; $\epsilon_r = 54.313$; $\rho = 1000$ kg/m³

DASY5 Configuration:

- Area Scan Setting: Find Secondary Maximum Within: 2.0 dB and with a peak SAR value greater than 0.0012W/kg
- Electronics: DAE4 Sn1447; Calibrated: 2015-09-23
- Probe: EX3DV4 - SN7314; ConvF(9.93, 9.93, 9.93); Calibrated: 2015-09-25;
- Sensor-Surface: 2mm (Mechanical Surface Detection)
- Phantom: ELI v6.0; Type: QDOVA003AA; Serial: TP:xxxx

Rear/Rel99_ch4183/Area Scan (12x10x1): Measurement grid: dx=15mm, dy=15mm
 Maximum value of SAR (measured) = 0.838 W/kg

Rear/Rel99_ch4183/Zoom Scan (5x6x7)/Cube 0: Measurement grid: dx=8mm, dy=8mm, dz=5mm
 Reference Value = 29.40 V/m; Power Drift = -0.02 dB
 Peak SAR (extrapolated) = 1.29 W/kg
SAR(1 g) = 0.683 W/kg; SAR(10 g) = 0.410 W/kg
 Maximum value of SAR (measured) = 0.876 W/kg



0 dB = 0.876 W/kg = -0.57 dBW/kg

WCDMA Band II

Frequency: 1880 MHz; Duty Cycle: 1:1; Room Ambient Temperature: 24.0°C; Liquid Temperature: 23.0°C

Medium parameters used: $f = 1880$ MHz; $\sigma = 1.422$ S/m; $\epsilon_r = 41.005$; $\rho = 1000$ kg/m³

DASY5 Configuration:

- Area Scan Setting: Find Secondary Maximum Within: 2.0 dB and with a peak SAR value greater than 0.0012W/kg
- Electronics: DAE4 Sn1494; Calibrated: 2015-11-11
- Probe: EX3DV4 - SN7313; ConvF(7.85, 7.85, 7.85); Calibrated: 2015-12-30;
- Sensor-Surface: 2.5mm (Mechanical Surface Detection), Sensor-Surface: 2mm (Mechanical Surface Detection)
- Phantom: SAM Phantom CRP v5.0(Right); Type: QD000P40CD; Serial: TP:1855

LHS/Touch_RMC Rel .99_ch 9400/Area Scan (10x14x1): Measurement grid: dx=15mm, dy=15mm

Maximum value of SAR (measured) = 0.889 W/kg

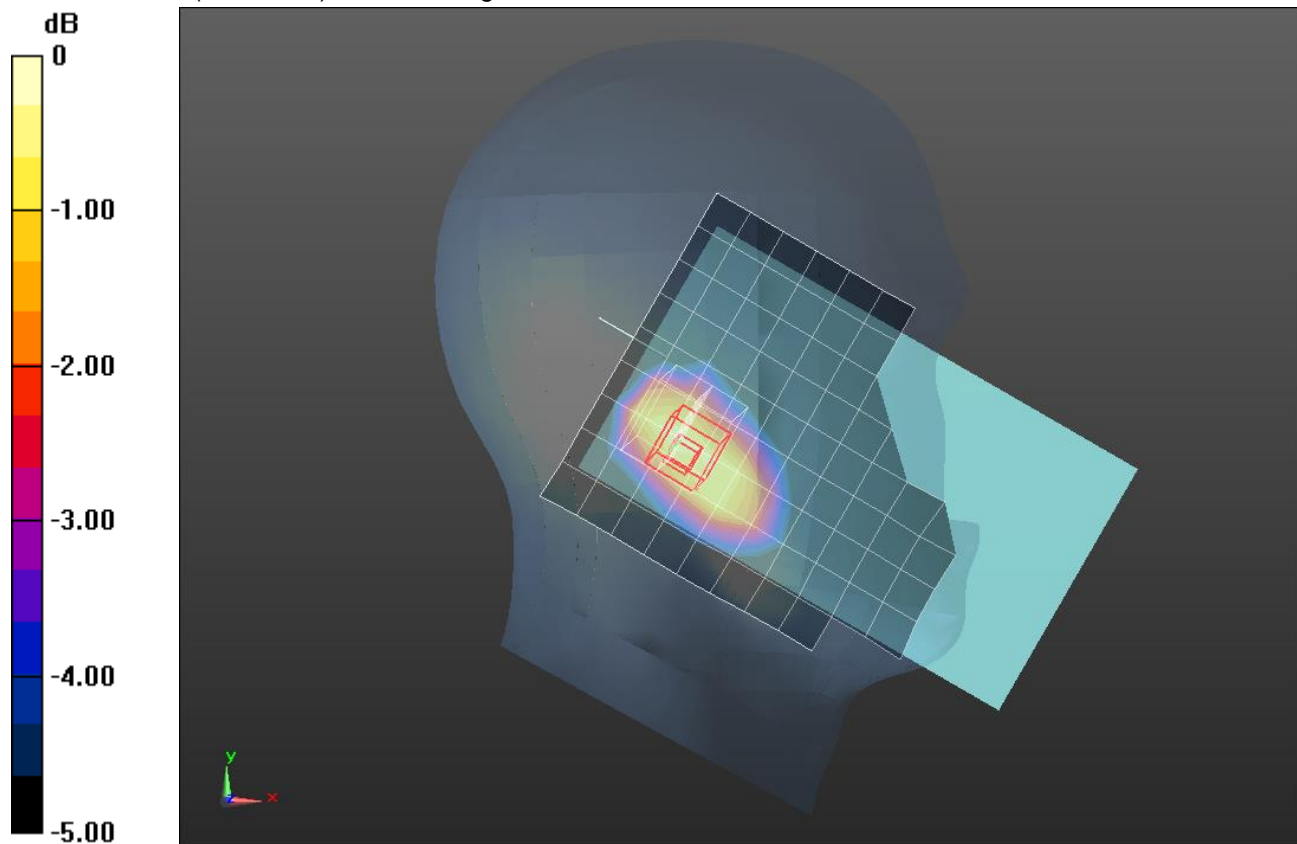
LHS/Touch_RMC Rel .99_ch 9400/Zoom Scan (5x5x7)/Cube 0: Measurement grid: dx=8mm, dy=8mm, dz=5mm

Reference Value = 26.19 V/m; Power Drift = 0.03 dB

Peak SAR (extrapolated) = 1.22 W/kg

SAR(1 g) = 0.747 W/kg; SAR(10 g) = 0.450 W/kg

Maximum value of SAR (measured) = 0.963 W/kg



0 dB = 0.963 W/kg = -0.16 dBW/kg

WCDMA Band II

Frequency: 1907.6 MHz; Duty Cycle: 1:1; Room Ambient Temperature: 24.0°C; Liquid Temperature: 23.0°C
 Medium parameters used (interpolated): $f = 1907.6$ MHz; $\sigma = 1.59$ S/m; $\epsilon_r = 54.11$; $\rho = 1000$ kg/m³

DASY5 Configuration:

- Area Scan Setting: Find Secondary Maximum Within: 2.0 dB and with a peak SAR value greater than 0.0012W/kg
- Electronics: DAE4 Sn1494; Calibrated: 2015-11-11
- Probe: EX3DV4 - SN7313; ConvF(7.54, 7.54, 7.54); Calibrated: 2015-12-30;
- Sensor-Surface: 2mm (Mechanical Surface Detection)
- Phantom: ELI v6.0; Type: QDOVA003AA; Serial: TP:xxxx

Edge 4/Rel99_ch9538/Area Scan (5x14x1): Measurement grid: dx=15mm, dy=15mm

Maximum value of SAR (measured) = 1.26 W/kg

Edge 4/Rel99_ch9538/Zoom Scan (5x5x7)/Cube 0: Measurement grid: dx=8mm, dy=8mm, dz=5mm

Reference Value = 29.91 V/m; Power Drift = -0.09 dB

Peak SAR (extrapolated) = 1.92 W/kg

SAR(1 g) = 1 W/kg; SAR(10 g) = 0.509 W/kg

Maximum value of SAR (measured) = 1.46 W/kg

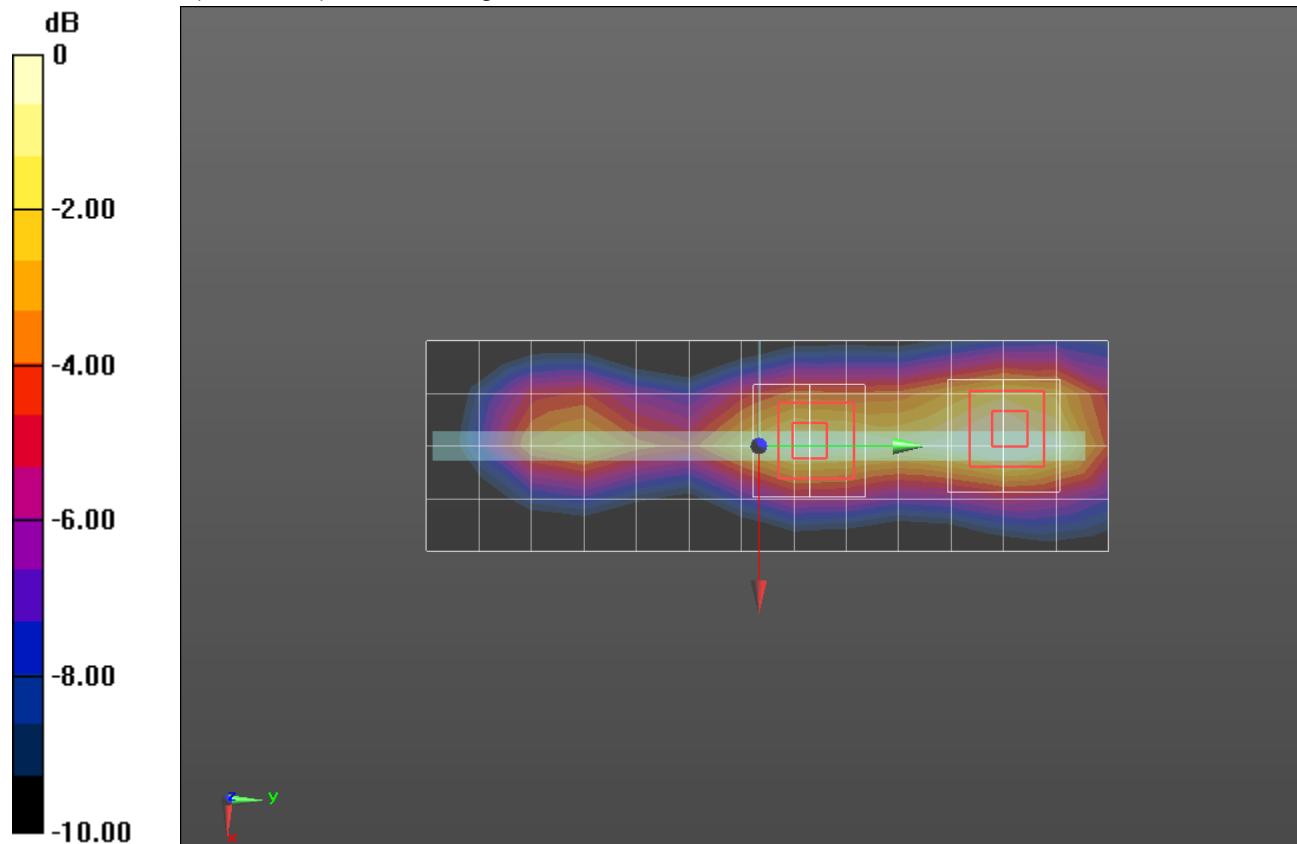
Edge 4/Rel99_ch9538/Zoom Scan 2 (5x5x7)/Cube 0: Measurement grid: dx=8mm, dy=8mm, dz=5mm

Reference Value = 29.91 V/m; Power Drift = -0.09 dB

Peak SAR (extrapolated) = 1.20 W/kg

SAR(1 g) = 0.687 W/kg; SAR(10 g) = 0.381 W/kg

Maximum value of SAR (measured) = 0.962 W/kg



0 dB = 0.962 W/kg = -0.17 dBW/kg

LTE Band V

Frequency: 836.5 MHz; Duty Cycle: 1:1; Room Ambient Temperature: 24.0°C; Liquid Temperature: 23.0°C
 Medium parameters used (interpolated): $f = 836.5$ MHz; $\sigma = 0.916$ S/m; $\epsilon_r = 41.009$; $\rho = 1000$ kg/m³

DASY5 Configuration:

- Area Scan Setting: Find Secondary Maximum Within: 2.0 dB and with a peak SAR value greater than 0.0012W/kg
- Electronics: DAE4 Sn1468; Calibrated: 2015-09-15
- Probe: EX3DV4 - SN7376; ConvF(9.99, 9.99, 9.99); Calibrated: 2015-09-02;
- Sensor-Surface: 2.5mm (Mechanical Surface Detection)
- Phantom: SAM (20deg probe tilt) with CRP v5.0(Right); Type: QD000P40CD; Serial: TP:1846

RHS/Touch_QPSK RB 1/25 ch 20525/Area Scan (10x15x1): Measurement grid: dx=15mm, dy=15mm

Maximum value of SAR (measured) = 0.663 W/kg

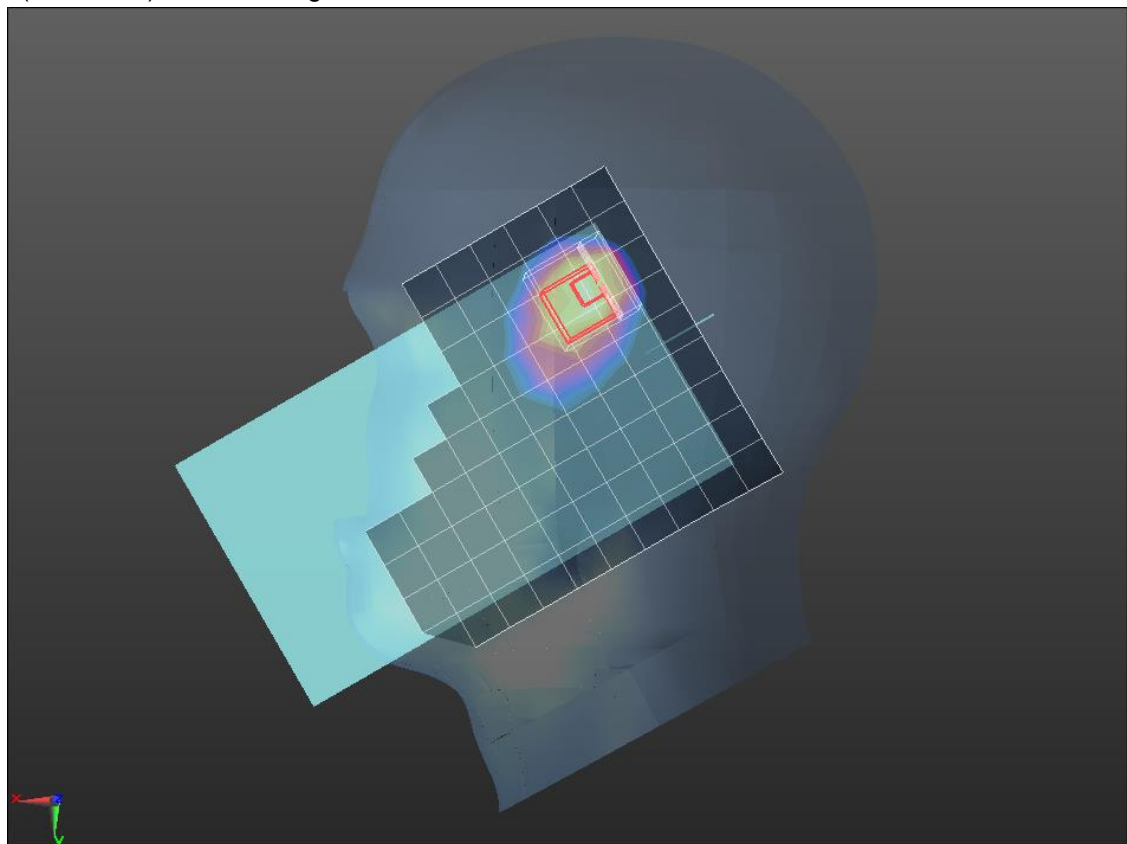
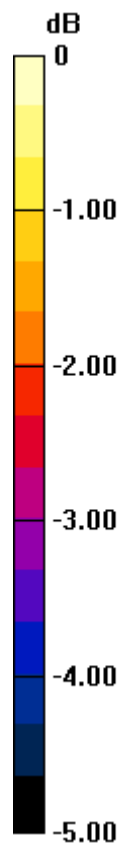
RHS/Touch_QPSK RB 1/25 ch 20525/Zoom Scan (5x5x7)/Cube 0: Measurement grid: dx=8mm, dy=8mm, dz=5mm

Reference Value = 14.62 V/m; Power Drift = -0.02 dB

Peak SAR (extrapolated) = 0.929 W/kg

SAR(1 g) = 0.613 W/kg; SAR(10 g) = 0.416 W/kg

Maximum value of SAR (measured) = 0.716 W/kg



0 dB = 0.716 W/kg = -1.45 dBW/kg

LTE Band 5

Frequency: 836.5 MHz; Duty Cycle: 1:1; Room Ambient Temperature: 24.0°C; Liquid Temperature: 23.0°C
 Medium parameters used (interpolated): $f = 836.5$ MHz; $\sigma = 1.009$ S/m; $\epsilon_r = 54.314$; $\rho = 1000$ kg/m³

DASY5 Configuration:

- Area Scan Setting: Find Secondary Maximum Within: 2.0 dB and with a peak SAR value greater than 0.0012W/kg
- Electronics: DAE4 Sn1447; Calibrated: 2015-09-23
- Probe: EX3DV4 - SN7314; ConvF(9.93, 9.93, 9.93); Calibrated: 2015-09-25;
- Sensor-Surface: 2mm (Mechanical Surface Detection)
- Phantom: ELI v6.0; Type: QDOVA003AA; Serial: TP:xxxx

Rear/QPSK RB 25/25 ch 20525/Area Scan (12x10x1): Measurement grid: dx=15mm, dy=15mm
 Maximum value of SAR (measured) = 0.669 W/kg

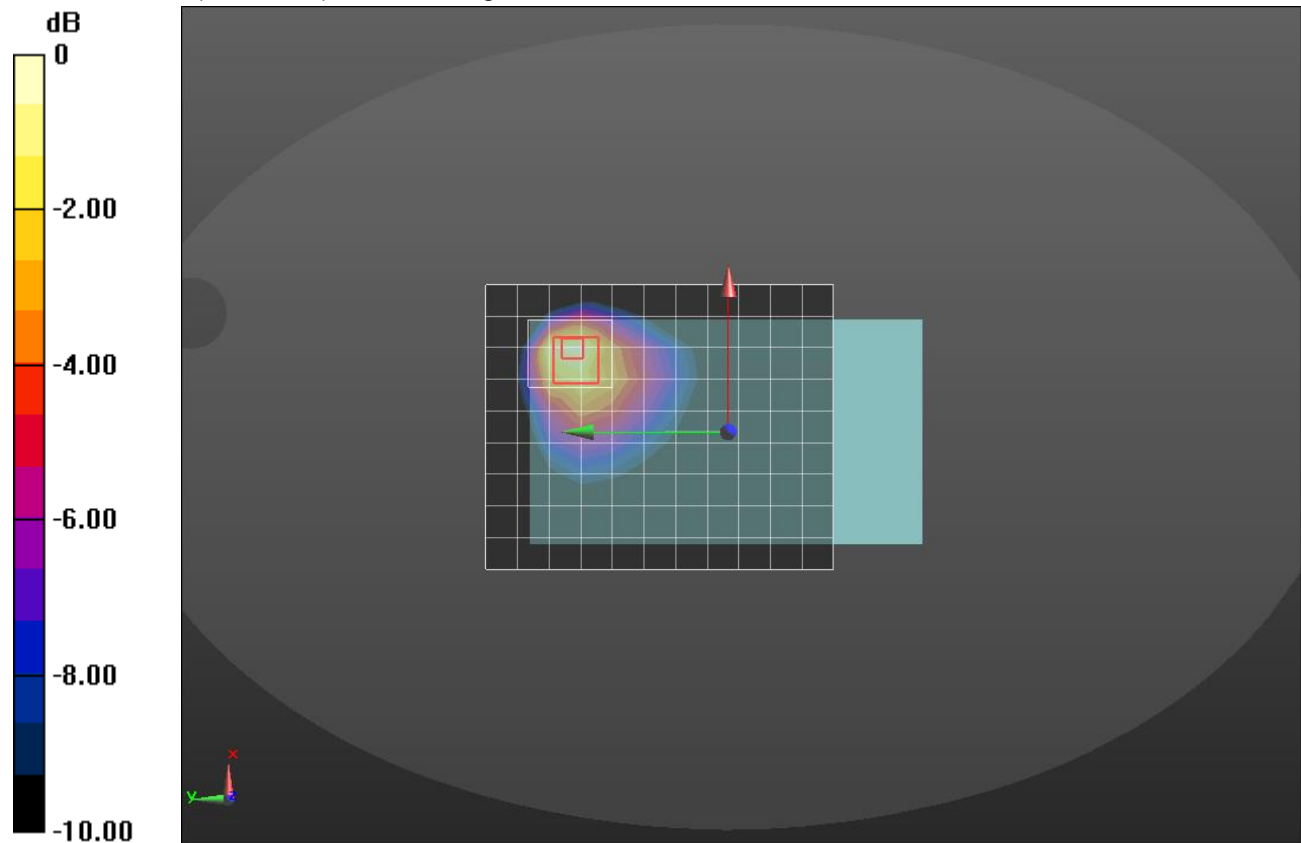
Rear/QPSK RB 25/25 ch 20525/Zoom Scan (5x6x7)/Cube 0: Measurement grid: dx=8mm, dy=8mm, dz=5mm

Reference Value = 26.43 V/m; Power Drift = 0.03 dB

Peak SAR (extrapolated) = 1.01 W/kg

SAR(1 g) = 0.532 W/kg; SAR(10 g) = 0.316 W/kg

Maximum value of SAR (measured) = 0.708 W/kg



0 dB = 0.708 W/kg = -1.50 dBW/kg

Wi-Fi 2.4GHz

Frequency: 2412 MHz; Duty Cycle: 1:1; Room Ambient Temperature: 24.0°C; Liquid Temperature: 23.0°C

Medium parameters used (interpolated): $f = 2412$ MHz; $\sigma = 1.829$ S/m; $\epsilon_r = 40.931$; $\rho = 1000$ kg/m³

DASY5 Configuration:

- Area Scan Setting: Find Secondary Maximum Within: 2.0 dB and with a peak SAR value greater than 0.0012W/kg
- Electronics: DAE4 Sn1447; Calibrated: 2015-09-23
- Probe: EX3DV4 - SN7314; ConvF(7.18, 7.18, 7.18); Calibrated: 2015-09-25;
- Sensor-Surface: 2mm (Mechanical Surface Detection)
- Phantom: SAM (20deg probe tilt) with CRP v5.0(Right); Type: QD000P40CD; Serial: TP:xxxx

LHS/Touch_802.11b_ch 1/Area Scan (12x18x1): Measurement grid: dx=12mm, dy=12mm

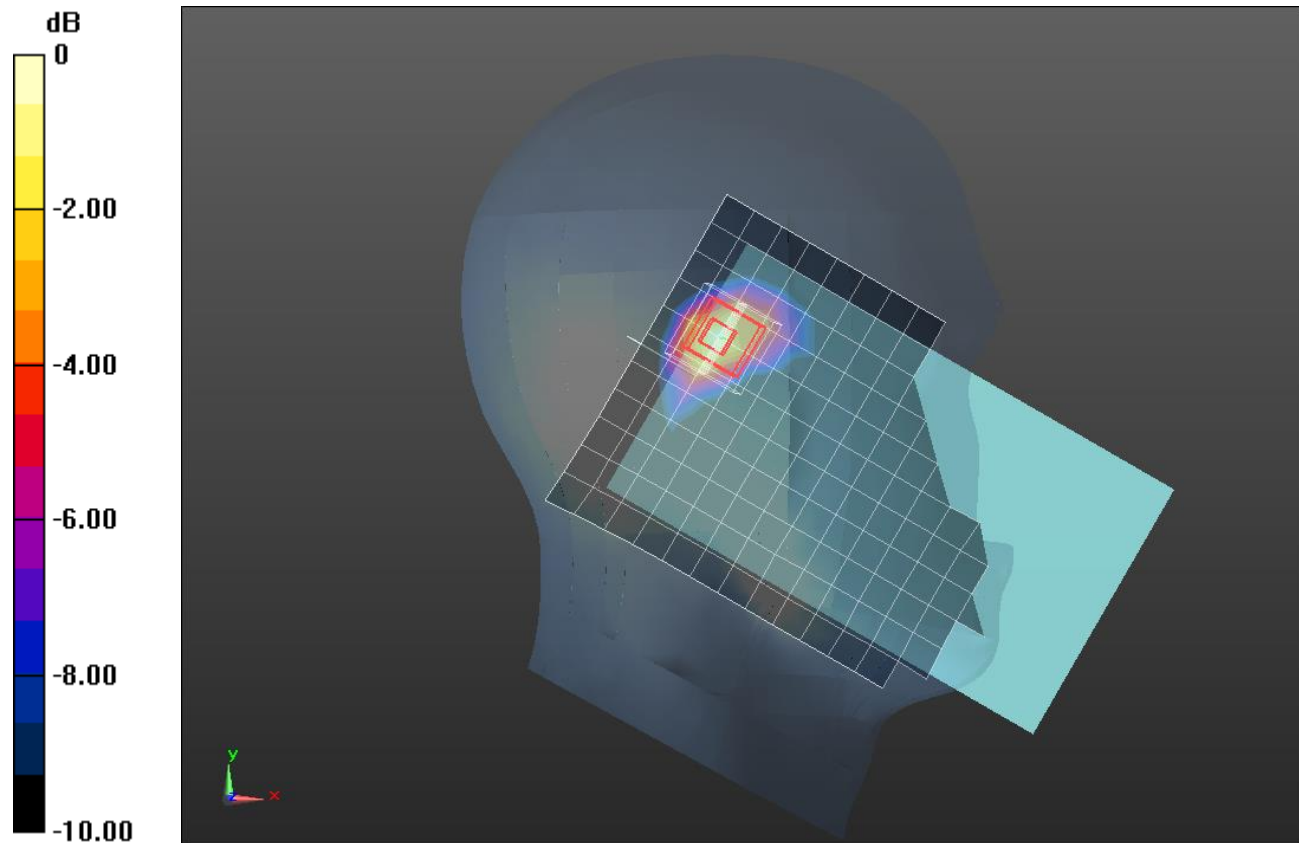
Maximum value of SAR (measured) = 0.135 W/kg

LHS/Touch_802.11b_ch 1/Zoom Scan (7x7x7)/Cube 0: Measurement grid: dx=5mm, dy=5mm, dz=5mm

Reference Value = 8.928 V/m; Power Drift = 0.08 dB

Peak SAR (extrapolated) = 0.196 W/kg

SAR(1 g) = 0.085 W/kg; SAR(10 g) = 0.037 W/kg



0 dB = 0.135 W/kg = -8.70 dBW/kg

Wi-Fi_2.4GHz

Frequency: 2462 MHz; Duty Cycle: 1:1; Room Ambient Temperature: 24.0°C; Liquid Temperature: 23.0°C

Medium parameters used (interpolated): $f = 2462$ MHz; $\sigma = 1.928$ S/m; $\epsilon_r = 52.612$; $\rho = 1000$ kg/m³

DASY5 Configuration:

- Area Scan Setting: Find Secondary Maximum Within: 2.0 dB and with a peak SAR value greater than 0.0012W/kg
- Electronics: DAE4 Sn1468; Calibrated: 2015-09-15
- Probe: EX3DV4 - SN7376; ConvF(7.37, 7.37, 7.37); Calibrated: 2015-09-02;
- Sensor-Surface: 2mm (Mechanical Surface Detection)
- Phantom: ELI v6.0; Type: QDOVA003AA; Serial: TP:xxxx

Rear Max Power/802.11b_ch 11/Area Scan (12x18x1): Measurement grid: dx=12mm, dy=12mm
 Maximum value of SAR (measured) = 0.573 W/kg

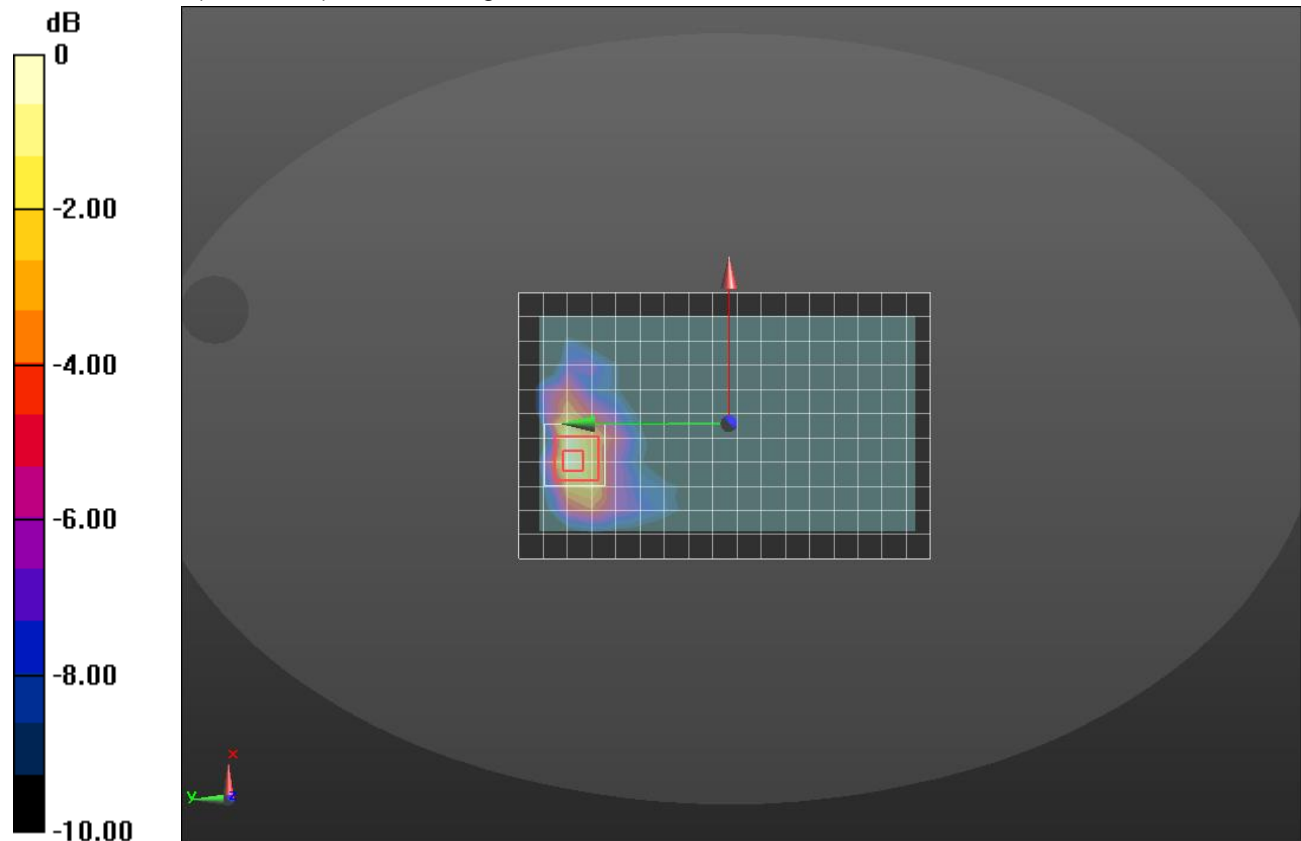
Rear Max Power/802.11b_ch 11/Zoom Scan (7x7x7)/Cube 0: Measurement grid: dx=5mm, dy=5mm, dz=5mm

Reference Value = 16.78 V/m; Power Drift = -0.07 dB

Peak SAR (extrapolated) = 0.834 W/kg

SAR(1 g) = 0.381 W/kg; SAR(10 g) = 0.179 W/kg

Maximum value of SAR (measured) = 0.563 W/kg



0 dB = 0.563 W/kg = -2.49 dBW/kg

Bluetooth

Frequency: 2480 MHz; Duty Cycle: 1:1.29033; Room Ambient Temperature: 24.0°C; Liquid Temperature: 23.0°C
Medium parameters used: $f = 2480$ MHz; $\sigma = 1.952$ S/m; $\epsilon_r = 52.563$; $\rho = 1000$ kg/m³

DASY5 Configuration:

- Area Scan Setting: Find Secondary Maximum Within: 2.0 dB and with a peak SAR value greater than 0.0012W/kg
- Electronics: DAE4 Sn1468; Calibrated: 2015-09-15
- Probe: EX3DV4 - SN7376; ConvF(7.37, 7.37, 7.37); Calibrated: 2015-09-02;
- Sensor-Surface: 2mm (Mechanical Surface Detection)
- Phantom: ELI v6.0; Type: QDOVA003AA; Serial: TP:xxxx

Rear/Bluetooth GFSK_ch78/Area Scan (12x18x1): Measurement grid: dx=12mm, dy=12mm
Maximum value of SAR (measured) = 0.215 W/kg

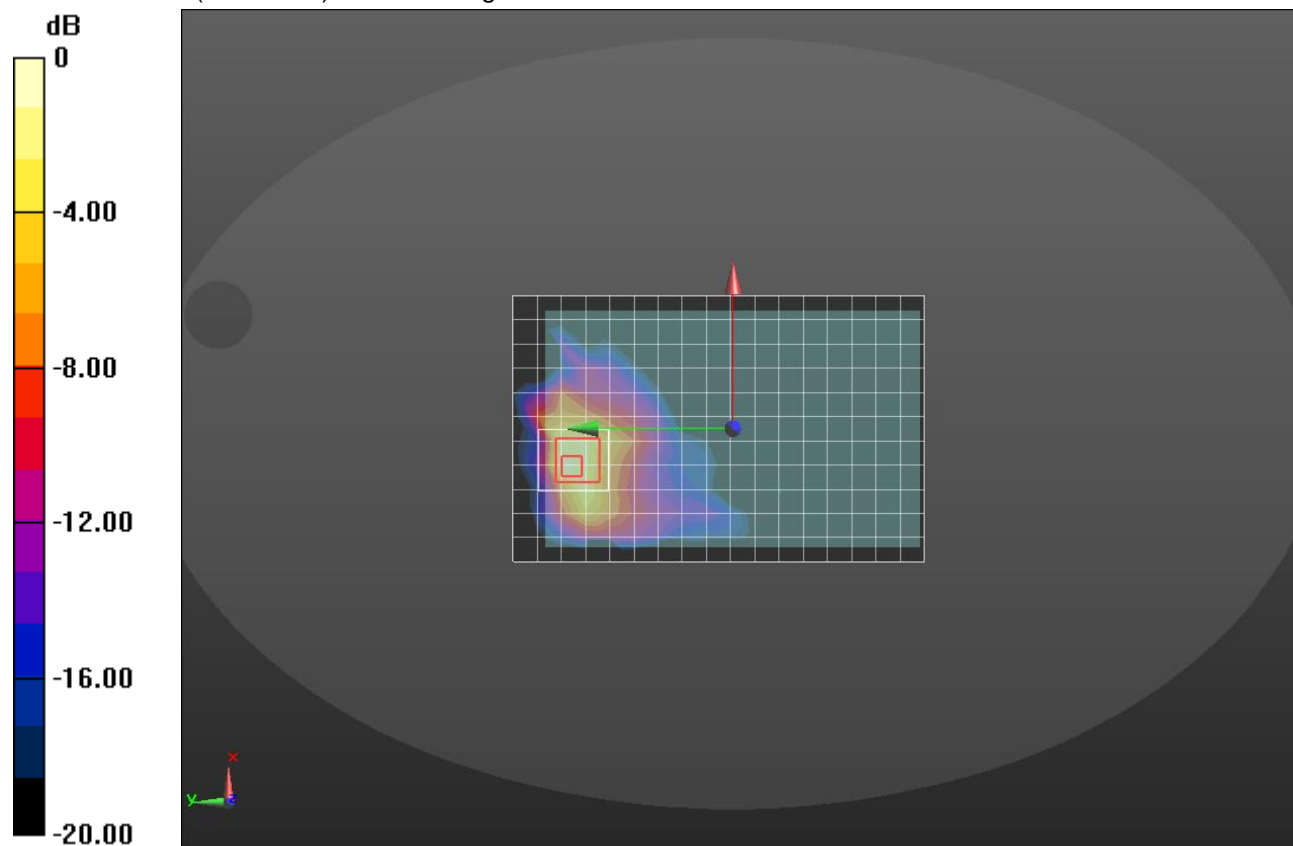
Rear/Bluetooth GFSK_ch78/Zoom Scan (7x8x7)/Cube 0: Measurement grid: dx=5mm, dy=5mm, dz=5mm

Reference Value = 9.897 V/m; Power Drift = -0.11 dB

Peak SAR (extrapolated) = 0.410 W/kg

SAR(1 g) = 0.154 W/kg; SAR(10 g) = 0.060 W/kg

Maximum value of SAR (measured) = 0.251 W/kg



0 dB = 0.251 W/kg = -6.00 dBW/kg