

APPENDIX A: SAR TEST PLOTS

ELEMENT

DUT: A3LSMS918U; Type: Portable Handset; Serial: 0874M

Communication System: UID:10011 - CAB, WCDMA; MAIA: Y; Frequency: 1732.4 MHz

Medium: 1750 Body; Medium parameters used:

f = 1732.4 MHz; cond = 1.52 S/m; perm = 51.1; density = 1000 kg/m³

Phantom Section: Flat; Space: 15.00 mm

Test Date: 12/08/2022; Ambient Temp: 23.1 °C; Tissue Temp: 20.4 °C

Probe: EX3DV4 - SN7406; ConvF:(8.06,8.06,8.06); Calibrated: 2022-07-18

Sensor-Surface: 1.4mm (VMS + 6p)

Electronics: DAE4 Sn1677; Calibrated: 2022-07-18

Phantom: Twin-SAM V8.0; Serial: 2064

Measurement SW: DASY Module SAR V16.2.0.1425

Mode: UMTS 1750, Antenna A, Body SAR. Back Side, Mid Ch.

Area Scan (120.0 x 210.0): Measurement grid: dx=15.0 mm, dy=15.0 mm

Zoom Scan (30.0 x 30.0 x 30.0): Measurement grid: dx=6.0 mm, dy=6.0 mm, dz=1.5 mm; Graded Ratio: 1.5

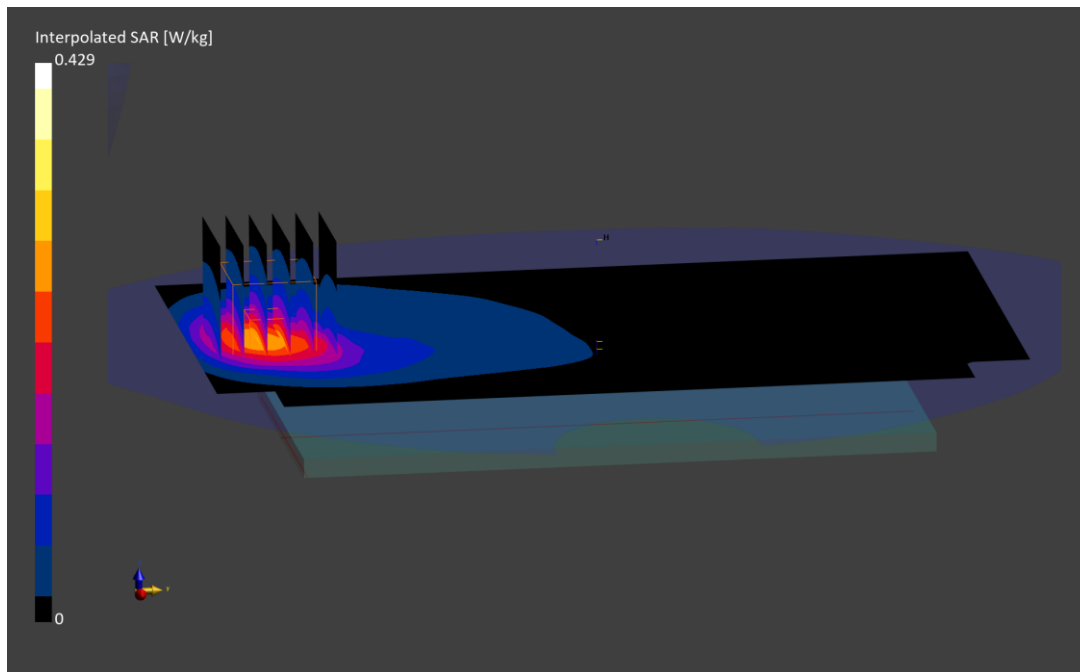
Reference Value = 0.27 W/kg; Power Drift = -0.03 dB

Peak SAR (extrapolated) = 0.429 W/kg

SAR(1 g) = 0.254 W/kg

Smallest distance from peaks to all points 3 dB below is 14.1 mm

Ratio of SAR at M2 to SAR at M1 = 84.4 %



ELEMENT

DUT: A3LSMS918U; Type: Portable Handset; Serial: 0875M

Communication System: UID:10011 - CAB, WCDMA; MAIA: Y; Frequency: 1907.6 MHz

Medium: 1900 Body; Medium parameters used:

f = 1907.6 MHz; cond = 1.53 S/m; perm = 53.7; density = 1000 kg/m³

Phantom Section: Flat; Space: 15.00 mm

Test Date: 12/08/2022; Ambient Temp: 24.0°C; Tissue Temp: 23.3°C

Probe: EX3DV4 - SN7488; ConvF:(8.33,8.33,8.33); Calibrated: 2022-02-21

Sensor-Surface: 1.4mm (VMS + 6p)

Electronics: DAE4 Sn1415; Calibrated: 2022-02-23

Phantom: Twin-SAM V8.0; Serial: 2065

Measurement SW: DASY Module SAR V16.2.0.1425

Mode: UMTS 1900, Antenna A, Body SAR, Back Side, High Ch.

Area Scan (120.0 x 210.0): Measurement grid: dx=15.0 mm, dy=15.0 mm

Zoom Scan (30.0 x 30.0 x 30.0): Measurement grid: dx=6.0 mm, dy=6.0 mm, dz=1.5 mm; Graded Ratio: 1.5

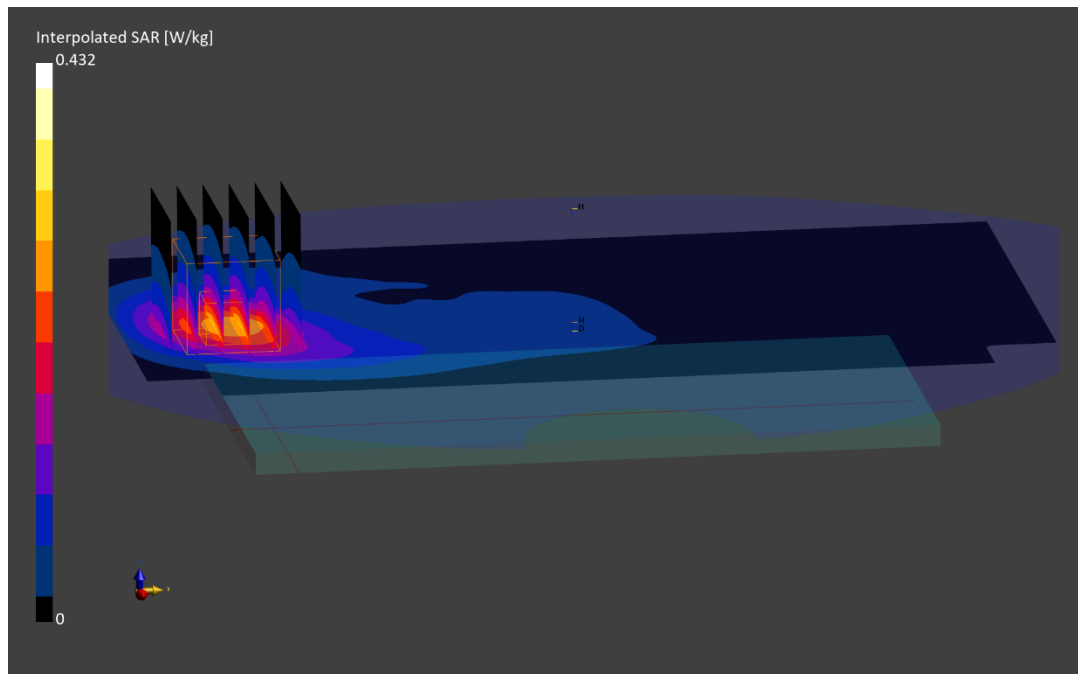
Reference Value = 0.28 W/kg; Power Drift = -0.04 dB

Peak SAR (extrapolated) = 0.432 W/kg

SAR(1 g) = 0.260 W/kg

Smallest distance from peaks to all points 3 dB below is 14.1 mm

Ratio of SAR at M2 to SAR at M1 = 85.6 %



ELEMENT

DUT: A3LSMS918U; Type: Portable Handset; Serial: 0874M

Communication System: UID:10175 - CAG, LTE-FDD; MAIA: Y; Frequency: 1775.0 MHz

Medium: 1750 Body; Medium parameters used:

f = 1775.0 MHz; cond = 1.57 S/m; perm = 50.9; density = 1000 kg/m³

Phantom Section: Flat; Space: 15.00 mm

Test Date: 12/08/2022; Ambient Temp: 23.1 °C; Tissue Temp: 20.4 °C

Probe: EX3DV4 - SN7406; ConvF:(8.06,8.06,8.06); Calibrated: 2022-07-18

Sensor-Surface: 1.4mm (VMS + 6p)

Electronics: DAE4 Sn1677; Calibrated: 2022-07-18

Phantom: Twin-SAM V8.0; Serial: 2064

Measurement SW: DASY Module SAR V16.2.0.1425

**Mode: LTE Band 66 (AWS), Antenna A, Body SAR, Back Side,
High Ch., 10 MHz Bandwidth, QPSK, 1 RB, 0 RB Offset**

Area Scan (120.0 x 210.0): Measurement grid: dx=15.0 mm, dy=15.0 mm

Zoom Scan (30.0 x 30.0 x 30.0): Measurement grid: dx=6.0 mm, dy=6.0 mm, dz=1.5 mm; Graded Ratio: 1.5

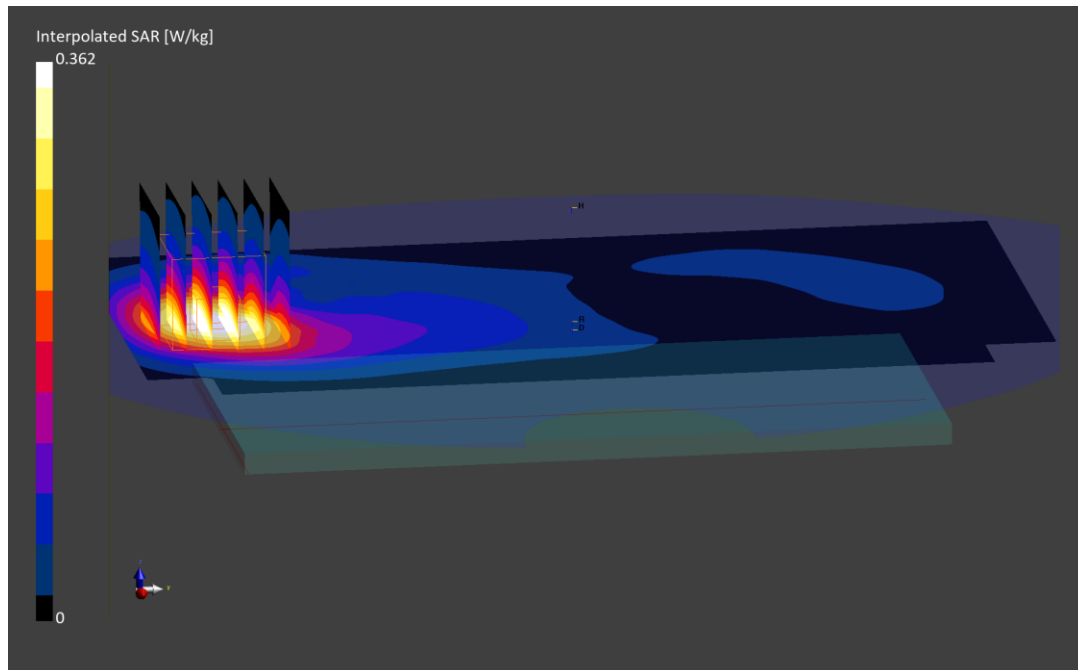
Reference Value = 0.39 W/kg; Power Drift = 0.12 dB

Peak SAR (extrapolated) = 0.619 W/kg

SAR(1 g) = 0.363 W/kg

Smallest distance from peaks to all points 3 dB below is 14.4 mm

Ratio of SAR at M2 to SAR at M1 = 83.4 %



ELEMENT

DUT: A3LSMS918U; Type: Portable Handset; Serial: 0875M

Communication System: UID:10169 - CAE, LTE-FDD; MAIA: Y; Frequency: 1905.0 MHz

Medium: 1900 Body; Medium parameters used:

f = 1905.0 MHz; cond = 1.53 S/m; perm = 53.7; density = 1000 kg/m³

Phantom Section: Flat; Space: 15.00 mm

Test Date: 12/08/2022; Ambient Temp: 24.0°C; Tissue Temp: 23.3°C

Probe: EX3DV4 - SN7488; ConvF:(8.33,8.33,8.33); Calibrated: 2022-02-21

Sensor-Surface: 1.4mm (VMS + 6p)

Electronics: DAE4 Sn1415; Calibrated: 2022-02-23

Phantom: Twin-SAM V8.0; Serial: 2065

Measurement SW: DASY Module SAR V16.2.0.1425

**Mode: LTE Band 25, Antenna A, Body SAR, Back side,
High Ch, 20 MHz Bandwidth, QPSK, 1 RB, 0 RB Offset**

Area Scan (120.0 x 210.0): Measurement grid: dx=15.0 mm, dy=15.0 mm

Zoom Scan (30.0 x 30.0 x 30.0): Measurement grid: dx=6.0 mm, dy=6.0 mm, dz=1.5 mm; Graded Ratio: 1.5

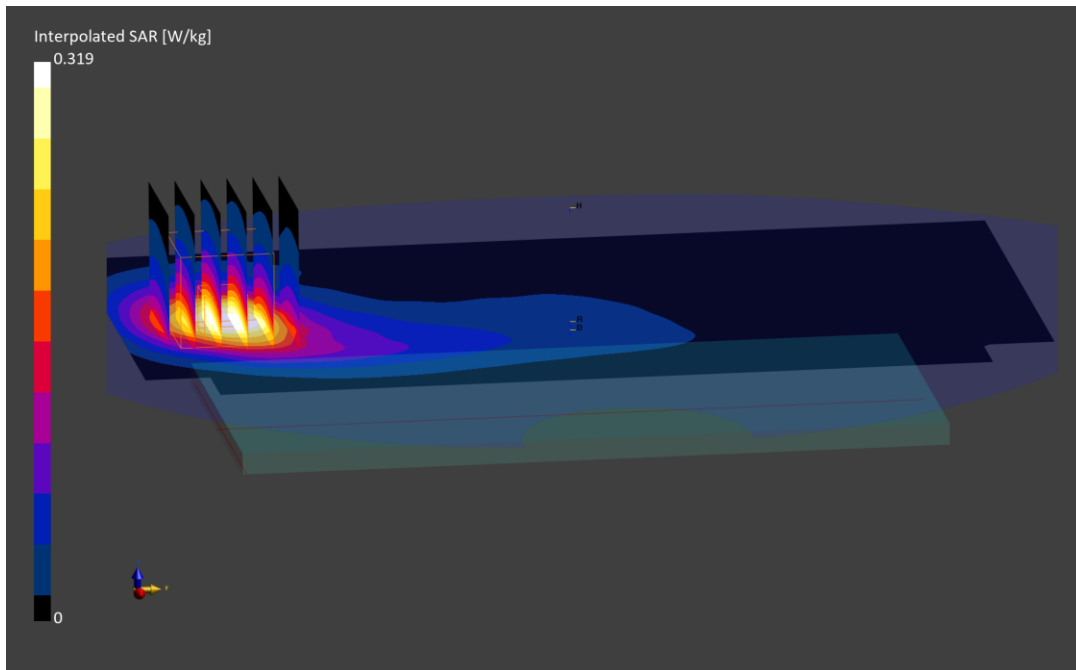
Reference Value = 0.31 W/kg; Power Drift = -0.05 dB

Peak SAR (extrapolated) = 0.476 W/kg

SAR(1 g) = 0.285 W/kg

Smallest distance from peaks to all points 3 dB below is 13.2 mm

Ratio of SAR at M2 to SAR at M1 = 85.6 %



ELEMENT

DUT: A3LSMS918U; Type: Portable Handset; Serial: 0874M

Communication System: UID:10175 - CAG, LTE-FDD; MAIA: Y; Frequency: 2310.0 MHz

Medium: 2450 Body; Medium parameters used:

f = 2310.0 MHz; cond = 1.74 S/m; perm = 54.1; density = 1000 kg/m³

Phantom Section: Flat; Space: 15.00 mm

Test Date: 12/09/2022; Ambient Temp: 23.0°C; Tissue Temp: 23.2°C

Probe: EX3DV4 - SN7409; ConvF:(7.47,7.47,7.47); Calibrated: 2022-06-16

Sensor-Surface: 1.4mm (VMS + 6p)

Electronics: DAE4 Sn1334; Calibrated: 2022-06-14

Phantom: Twin-SAM V5.0; Serial: 1792

Measurement SW: DASY Module SAR V16.2.0.1425

**Mode: LTE Band 30, Antenna A, Body SAR, Back Side,
10 MHz Bandwidth, Mid Ch., QPSK, 1 RB, 25 RB Offset**

Area Scan (120.0 x 200.0): Measurement grid: dx=10.0 mm, dy=10.0 mm

Zoom Scan (30.0 x 30.0 x 30.0): Measurement grid: dx=5.0 mm, dy=5.0 mm, dz=1.5 mm; Graded Ratio: 1.5

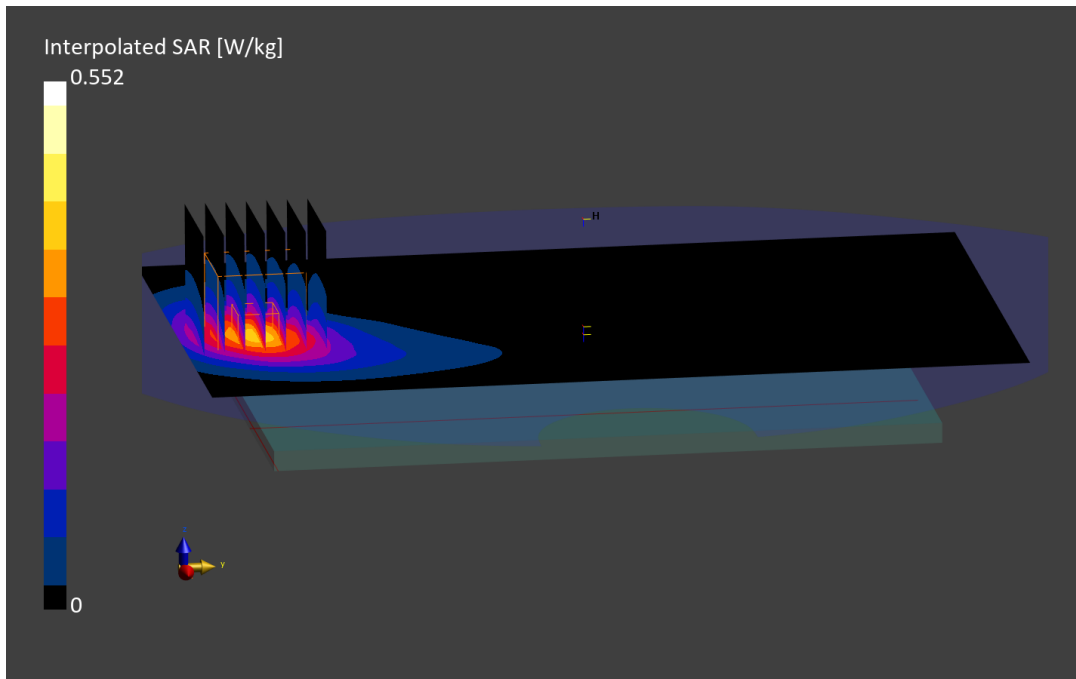
Reference Value = 0.30 W/kg; Power Drift = 0.01 dB

Peak SAR (extrapolated) = 0.552 W/kg

SAR(1 g) = 0.310 W/kg

Smallest distance from peaks to all points 3 dB below is 14.8 mm

Ratio of SAR at M2 to SAR at M1 = 82.9 %



ELEMENT

DUT: A3LSMS918U; Type: Portable Handset; Serial: 0878M

Communication System: UID:10169 - CAE, LTE-FDD; MAIA: Y; Frequency: 2560.0 MHz

Medium: 2450 Body; Medium parameters used:

f = 2560.0 MHz; cond = 2.07 S/m; perm = 53.3; density = 1000 kg/m³

Phantom Section: Flat; Space: 15.00 mm

Test Date: 12/09/2022; Ambient Temp: 23.0°C; Tissue Temp: 23.2°C

Probe: EX3DV4 - SN7409; ConvF:(7.23,7.23,7.23); Calibrated: 2022-06-16

Sensor-Surface: 1.4mm (VMS + 6p)

Electronics: DAE4 Sn1334; Calibrated: 2022-06-14

Phantom: Twin-SAM V5.0; Serial: 1792

Measurement SW: DASY Module SAR V16.2.0.1425

**Mode: LTE Band 7, Antenna B, Body SAR, Back Side,
High Ch, 20 MHz Bandwidth, QPSK, 1 RB, 99 RB Offset**

Area Scan (120.0 x 200.0): Measurement grid: dx=10.0 mm, dy=10.0 mm

Zoom Scan (30.0 x 30.0 x 30.0): Measurement grid: dx=5.0 mm, dy=5.0 mm, dz=1.5 mm; Graded Ratio: 1.5

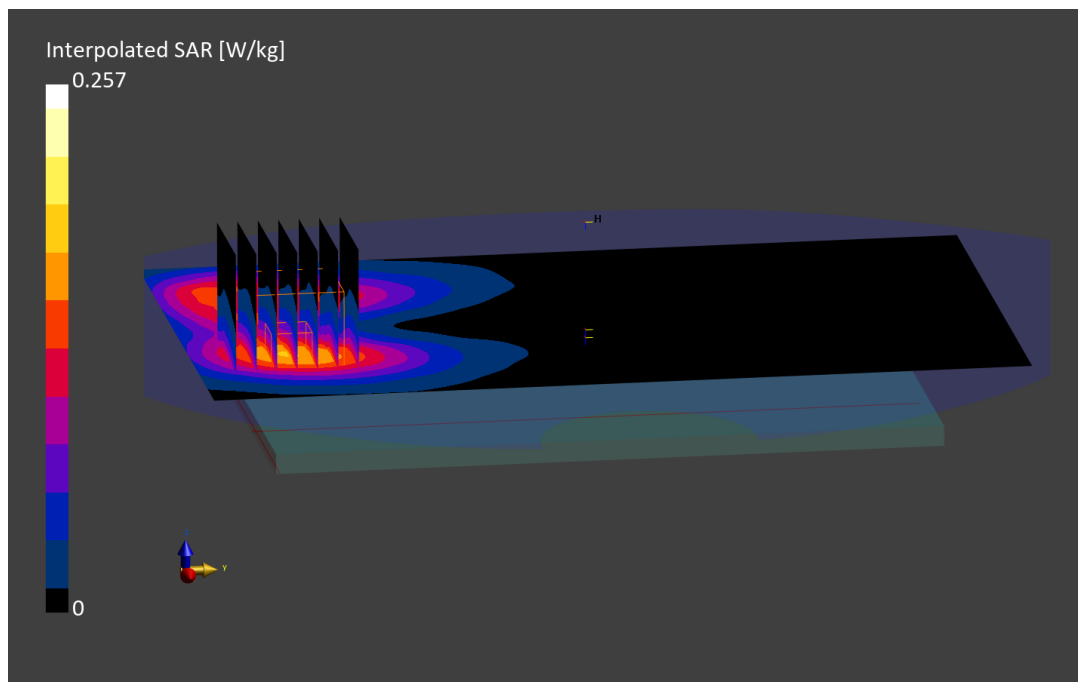
Reference Value = 0.13 W/kg; Power Drift = -0.14 dB

Peak SAR (extrapolated) = 0.257 W/kg

SAR(1 g) = 0.138 W/kg

Smallest distance from peaks to all points 3 dB below is 17.7 mm

Ratio of SAR at M2 to SAR at M1 = 81.0 %



ELEMENT

DUT: A3LSMS918U; Type: Portable Handset; Serial: 0875M

Communication System: UID:10435 - AAF, LTE-TDD; MAIA: Y; Frequency: 2593.0 MHz

Medium: 2450 Body; Medium parameters used:

f = 2593.0 MHz; cond = 2.12 S/m; perm = 53.3; density = 1000 kg/m³

Phantom Section: Flat; Space: 15.00 mm

Test Date: 12/09/2022; Ambient Temp: 23.0°C; Tissue Temp: 23.2°C

Probe: EX3DV4 - SN7409; ConvF:(7.23,7.23,7.23); Calibrated: 2022-06-16

Sensor-Surface: 1.4mm (VMS + 6p)

Electronics: DAE4 Sn1334; Calibrated: 2022-06-14

Phantom: Twin-SAM V5.0; Serial: 1792

Measurement SW: DASY Module SAR V16.2.0.1425

**Mode: LTE Band 41 PC3, Antenna B, Body SAR, Back Side, Mid Ch.,
20 MHz Bandwidth, QPSK, 1 RB, 0 RB Offset**

Area Scan (120.0 x 200.0): Measurement grid: dx=10.0 mm, dy=10.0 mm

Zoom Scan (30.0 x 30.0 x 30.0): Measurement grid: dx=5.0 mm, dy=5.0 mm, dz=1.5 mm; Graded Ratio: 1.5

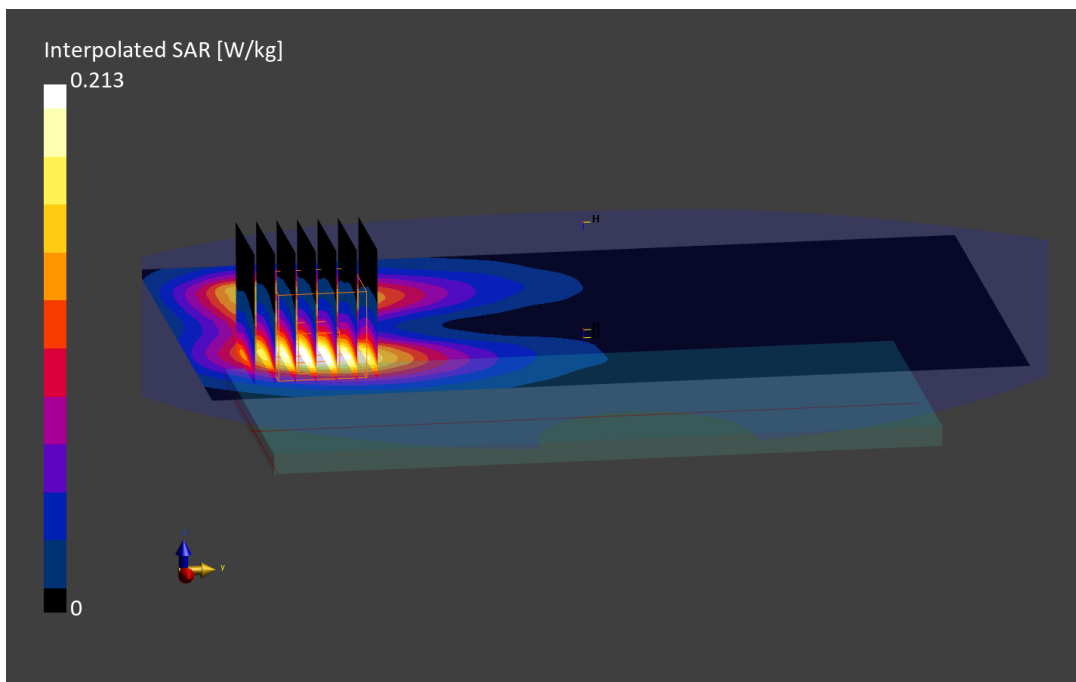
Reference Value = 0.16 W/kg; Power Drift = -0.06 dB

Peak SAR (extrapolated) = 0.319 W/kg

SAR(1 g) = 0.167 W/kg

Smallest distance from peaks to all points 3 dB below is 17.7 mm

Ratio of SAR at M2 to SAR at M1 = 80.6 %



ELEMENT

DUT: A3LSMS918U; Type: Portable Handset; Serial: 0878M

Communication System: UID:10942 - AAC, 5G NR FR1 FDD; MAIA: Y; Frequency: 1745.0 MHz

Medium: 1750 Body; Medium parameters used:

f = 1745.0 MHz; cond = 1.46 S/m; perm = 53.3; density = 1000 kg/m³

Phantom Section: Flat; Space: 15.00 mm

Test Date: 12/11/2022; Ambient Temp: 22.9°C; Tissue Temp: 20.4°C

Probe: EX3DV4 - SN7410; ConvF:(8.14,8.14,8.14); Calibrated: 2022-07-19

Sensor-Surface: 1.4mm (VMS + 6p)

Electronics: DAE4 Sn1583; Calibrated: 2022-07-18

Phantom: Twin-SAM V8.0; Serial: 1966

Measurement SW: DASY Module SAR V16.2.0.1425

**Mode: NR Band n66, Antenna A, Body SAR, Back Side, Ch. 349000,
40 MHz Bandwidth, DFT-s-OFDM QPSK, 108 RB, 108 RB Offset**

Area Scan (120.0 x 210.0): Measurement grid: dx=15.0 mm, dy=15.0 mm

Zoom Scan (30.0 x 30.0 x 30.0): Measurement grid: dx=6.0 mm, dy=6.0 mm, dz=1.5 mm; Graded Ratio: 1.5

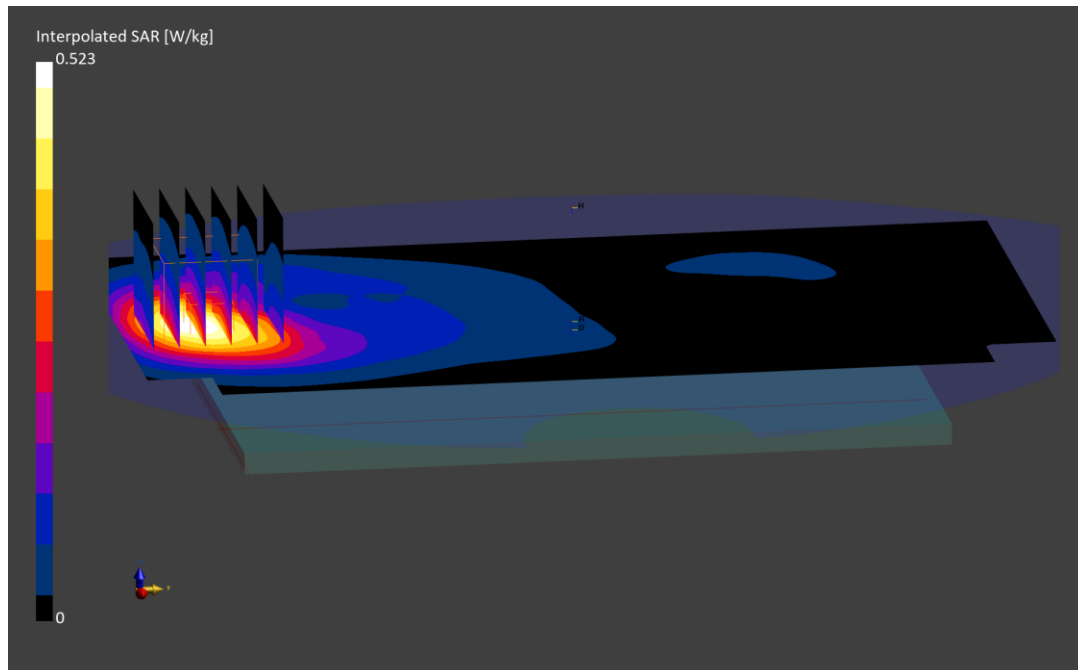
Reference Value = 0.31 W/kg; Power Drift = -0.01 dB

Peak SAR (extrapolated) = 0.523 W/kg

SAR(1 g) = 0.323 W/kg

Smallest distance from peaks to all points 3 dB below is 14.4 mm

Ratio of SAR at M2 to SAR at M1 = 86.3 %



ELEMENT

DUT: A3LSMS918U; Type: Portable Handset; Serial: 0874M

Communication System: UID:10942 - AAC, 5G NR FR1 FDD; MAIA: Y; Frequency: 1882.5 MHz

Medium: 1900 Body; Medium parameters used:

f = 1882.5 MHz; cond = 1.50 S/m; perm = 53.8; density = 1000 kg/m³

Phantom Section: Flat; Space: 15.00 mm

Test Date: 12/08/2022; Ambient Temp: 24.0°C; Tissue Temp: 23.3°C

Probe: EX3DV4 - SN7488; ConvF:(8.33,8.33,8.33); Calibrated: 2022-02-21

Sensor-Surface: 1.4mm (VMS + 6p)

Electronics: DAE4 Sn1415; Calibrated: 2022-02-23

Phantom: Twin-SAM V8.0; Serial: 2065

Measurement SW: DASY Module SAR V16.2.0.1425

**Mode: NR Band n25, Antenna A. Body SAR, Back Side, Ch. 376500,
40 MHz Bandwidth, DFT-s-OFDM QPSK, 108 RB, 0 RB Offset**

Area Scan (120.0 x 210.0): Measurement grid: dx=15.0 mm, dy=15.0 mm

Zoom Scan (30.0 x 30.0 x 30.0): Measurement grid: dx=6.0 mm, dy=6.0 mm, dz=1.5 mm; Graded Ratio: 1.5

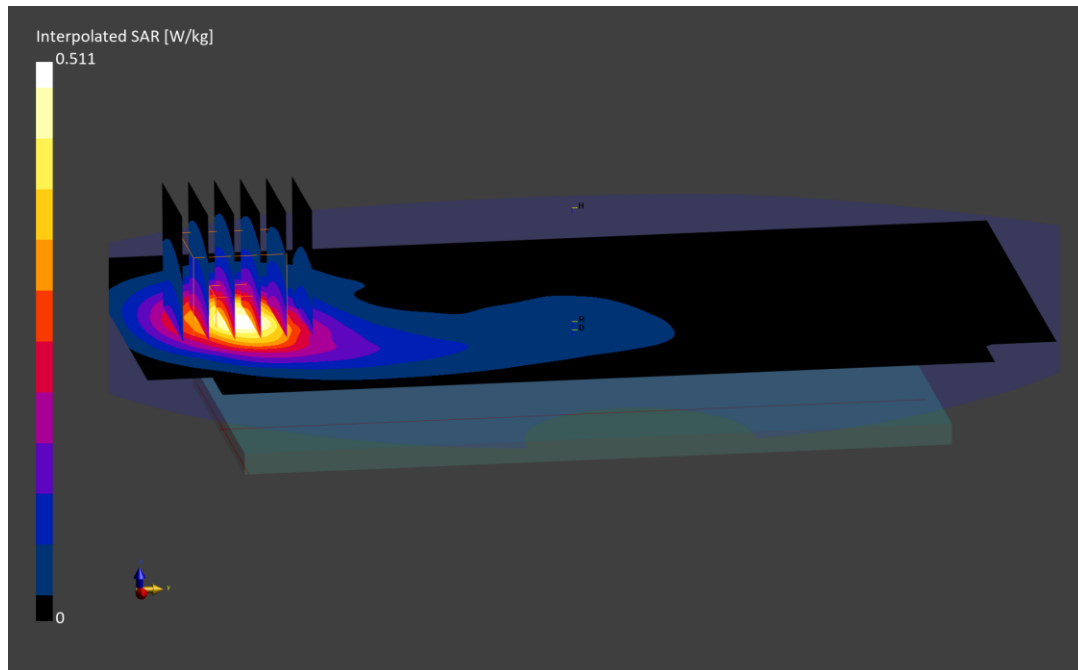
Reference Value = 0.35 W/kg; Power Drift = -0.03 dB

Peak SAR (extrapolated) = 0.511 W/kg

SAR(1 g) = 0.309 W/kg

Smallest distance from peaks to all points 3 dB below is 13.2 mm

Ratio of SAR at M2 to SAR at M1 = 86.0 %



ELEMENT

DUT: A3LSMS918U; Type: Portable Handset; Serial: 0875M

Communication System: UID:10929 - AAC, 5G NR FR1 FDD; MAIA: Y; Frequency: 2310.0 MHz

Medium: 2450 Body; Medium parameters used:

f = 2310.0 MHz; cond = 1.74 S/m; perm = 54.1; density = 1000 kg/m³

Phantom Section: Flat; Space: 15.00 mm

Test Date: 12/09/2022; Ambient Temp: 23.0°C; Tissue Temp: 23.2°C

Probe: EX3DV4 - SN7409; ConvF:(7.47,7.47,7.47); Calibrated: 2022-06-16

Sensor-Surface: 1.4mm (VMS + 6p)

Electronics: DAE4 Sn1334; Calibrated: 2022-06-14

Phantom: Twin-SAM V5.0; Serial: 1792

Measurement SW: DASY Module SAR V16.2.0.1425

**Mode: NR Band n30, Antenna A, Body SAR, Back Side, Ch. 462000,
10 MHz Bandwidth, DFT-s-OFDM QPSK, 1 RB, 26 RB Offset**

Area Scan (120.0 x 200.0): Measurement grid: dx= 10.0 mm, dy= 10.0 mm

Zoom Scan (30.0 x 30.0 x 30.0): Measurement grid: dx=5.0 mm, dy=5.0 mm, dz=1.5 mm; Graded Ratio: 1.5

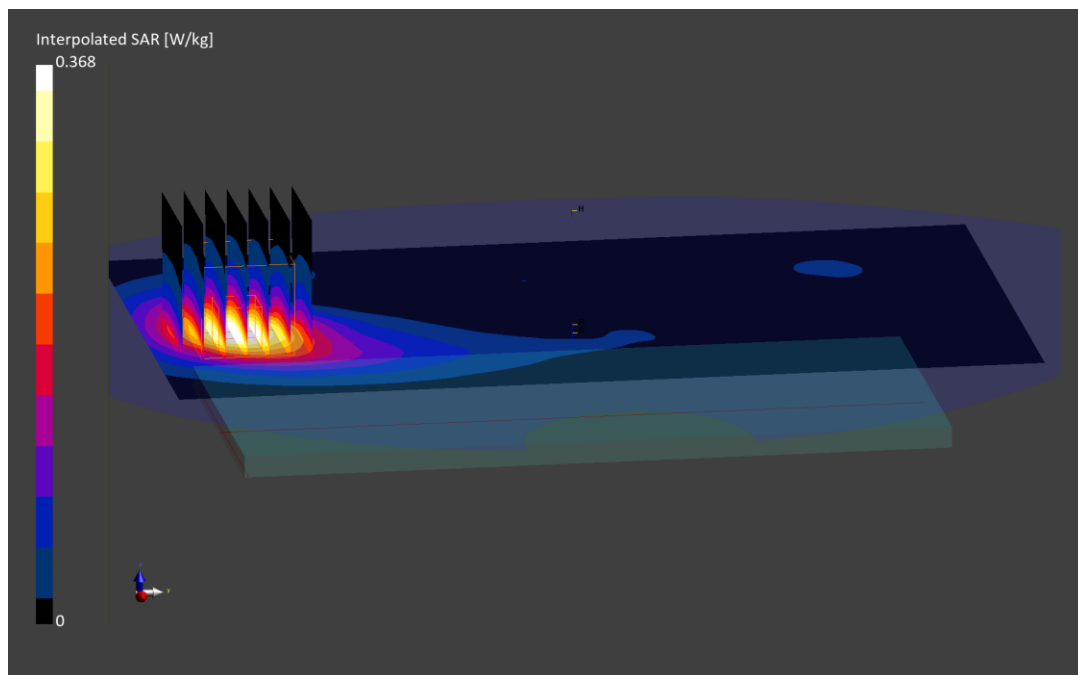
Reference Value = 0.29 W/kg; Power Drift = 0.02 dB

Peak SAR (extrapolated) = 0.544 W/kg

SAR(1 g) = 0.295 W/kg

Smallest distance from peaks to all points 3 dB below is 14.9 mm

Ratio of SAR at M2 to SAR at M1 = 81.3 %



ELEMENT

DUT: A3LSMS918U; Type: Portable Handset; Serial: 0875M

Communication System: UID:10942 - AAC, 5G NR FR1 FDD; MAIA: Y; Frequency: 2535.0 MHz

Medium: 2450 Body; Medium parameters used:

f = 2535.0 MHz; cond = 2.14 S/m; perm = 54.4; density = 1000 kg/m³

Phantom Section: Flat; Space: 15.00 mm

Test Date: 12/09/2022; Ambient Temp: 23.0°C; Tissue Temp: 23.2°C

Probe: EX3DV4 - SN7409; ConvF:(7.23,7.23,7.23); Calibrated: 2022-06-16

Sensor-Surface: 1.4mm (VMS + 6p)

Electronics: DAE4 Sn1334; Calibrated: 2022-06-14

Phantom: Twin-SAM V5.0; Serial: 1792

Measurement SW: DASY Module SAR V16.2.0.1425

**Mode: NR Band n7, Antenna B, Body SAR, Back Side, Ch. 507000,
40 MHz Bandwidth, DFT-s-OFDM QPSK, 108 RB, 108 RB Offset**

Area Scan (120.0 x 200.0): Measurement grid: dx=10.0 mm, dy=10.0 mm

Zoom Scan (30.0 x 30.0 x 30.0): Measurement grid: dx=5.0 mm, dy=5.0 mm, dz=1.5 mm; Graded Ratio: 1.5

Reference Value = 0.17 W/kg; Power Drift = 0.01 dB

Peak SAR (extrapolated) = 0.329 W/kg

SAR(1 g) = 0.177 W/kg

Smallest distance from peaks to all points 3 dB below is 16.6 mm

Ratio of SAR at M2 to SAR at M1 = 81.3 %

