

## APPENDIX B: POWER DENSITY SYSTEM VERIFICATION PLOTS

# Element

Date: 09/20/2022

30 GHz System Verification

## Device Under Test Properties

DUT	Serial Number
30 GHz Verification Source	1045

## Exposure Conditions

Phantom Section	Position	Test Distance [mm]	Band	Frequency [MHz]
5G	FRONT	5.55	Validation band	30000.0

## Hardware Setup

Probe, Calibration Date	DAE, Calibration Date
EUmmWV4 - SN9541, 05/19/2022	DAE4ip SN1638, 11/11/2021

## Software Setup

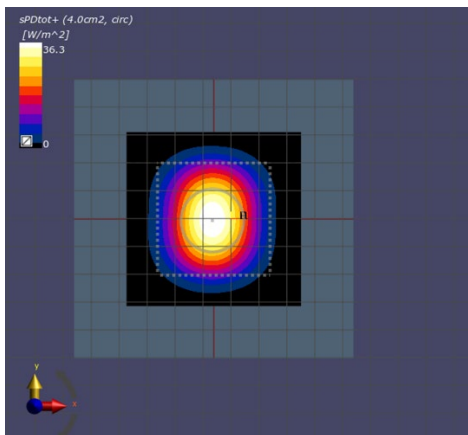
Software	Software Version
cDASY6 Module mmWave	3.0.0.841

## Scans Setup

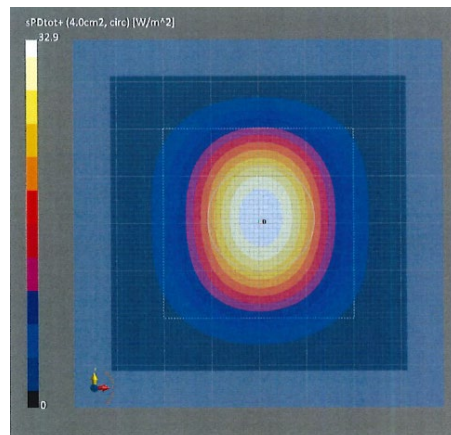
Scan Type	5G Scan
Grid Extents [mm]	60.0 x 60.0
Grid Steps [lambda]	0.25 x 0.25
Sensor Surface [mm]	5.55

## Measurement Results

Scan Type	5G Scan
Avg. Area [cm <sup>2</sup> ]	4.00
pS <sub>tot</sub> avg [W/m <sup>2</sup> ]	36.3
pS <sub>n</sub> avg [W/m <sup>2</sup> ]	35.8
E <sub>peak</sub> [V/m]	137
Deviation (dB)	0.45



30 GHz System Verification



Calibration Certificate

# Element

Date: 09/20/2022

30 GHz System Verification

## Device Under Test Properties

DUT	Serial Number
30 GHz Verification Source	1035

## Exposure Conditions

Phantom Section	Position	Test Distance [mm]	Band	Frequency [MHz]
5G	FRONT	5.55	Validation band	30000.0

## Hardware Setup

Probe, Calibration Date	DAE, Calibration Date
EUmWV3 - SN9407, 12/13/2021	DAE4ip SN1639, 01/21/2022

## Software Setup

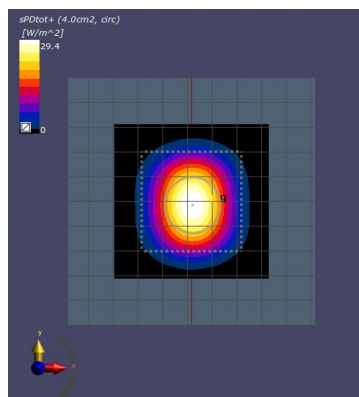
Software	Software Version
cDASY6 Module mmWave	3.0.0.841

## Scans Setup

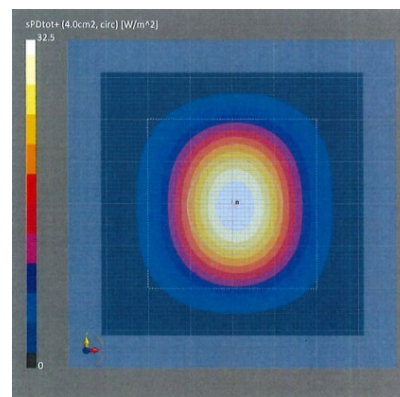
Scan Type	5G Scan
Grid Extents [mm]	60.0 x 60.0
Grid Steps [lambda]	0.25 x 0.25
Sensor Surface [mm]	5.55

## Measurement Results

Scan Type	5G Scan
Avg. Area [cm <sup>2</sup> ]	4.00
pS <sub>tot</sub> avg [W/m <sup>2</sup> ]	29.4
pS <sub>n</sub> avg [W/m <sup>2</sup> ]	29.0
E <sub>peak</sub> [V/m]	123
Deviation (dB)	-0.42



30 GHz System Verification



Calibration Certificate

# Element

Date: 10/11/2022

30 GHz System Verification

## Device Under Test Properties

DUT	Serial Number
30 GHz Verification Source	1035

## Exposure Conditions

Phantom Section	Position	Test Distance [mm]	Band	Frequency [MHz]
5G	FRONT	5.55	Validation band	30000.0

## Hardware Setup

Probe, Calibration Date	DAE, Calibration Date
EUmmWV4 - SN9622, 02/24/2022	DAE4 SN1676, 06/15/2022

## Software Setup

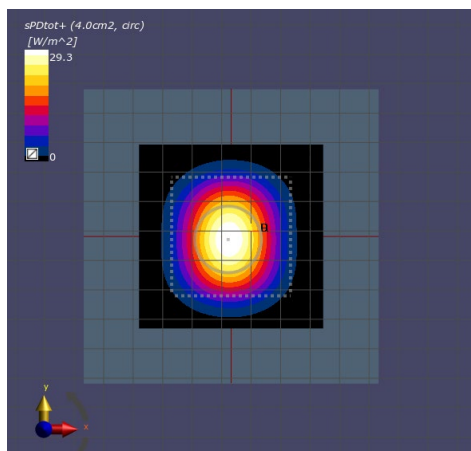
Software	Software Version
cDASY6 Module mmWave	3.0.0.841

## Scans Setup

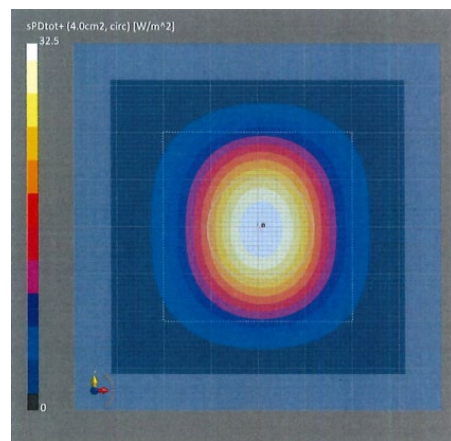
Scan Type	5G Scan
Grid Extents [mm]	60.0 x 60.0
Grid Steps [lambda]	0.25 x 0.25
Sensor Surface [mm]	5.55

## Measurement Results

Scan Type	5G Scan
Avg. Area [cm <sup>2</sup> ]	4.00
pS <sub>tot</sub> avg [W/m <sup>2</sup> ]	29.3
pS <sub>n</sub> avg [W/m <sup>2</sup> ]	28.9
E <sub>peak</sub> [V/m]	122
Deviation (dB)	-0.44



30 GHz System Verification



Calibration Certificate

# Element

Date: 10/31/2022

30 GHz System Verification

## Device Under Test Properties

DUT	Serial Number
30 GHz Verification Source	1045

## Exposure Conditions

Phantom Section	Position	Test Distance [mm]	Band	Frequency [MHz]
5G	FRONT	5.55	Validation band	30000.0

## Hardware Setup

Probe, Calibration Date	DAE, Calibration Date
EUmmWV4 - SN9541, 05/19/2022	DAE4ip SN1639, 01/21/2022

## Software Setup

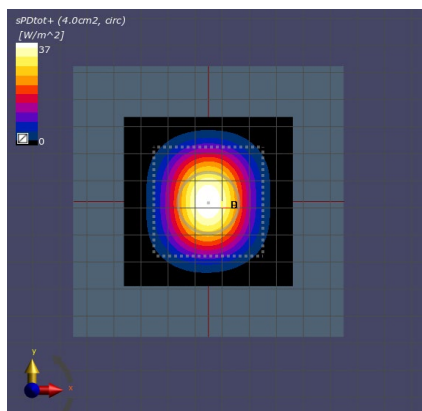
Software	Software Version
cDASY6 Module mmWave	3.0.0.841

## Scans Setup

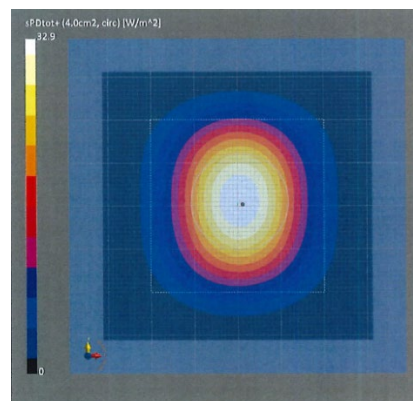
Scan Type	5G Scan
Grid Extents [mm]	60.0 x 60.0
Grid Steps [lambda]	0.25 x 0.25
Sensor Surface [mm]	5.55

## Measurement Results

Scan Type	5G Scan
Avg. Area [cm <sup>2</sup> ]	4.00
pS <sub>tot</sub> avg [W/m <sup>2</sup> ]	37.0
pS <sub>n</sub> avg [W/m <sup>2</sup> ]	36.6
E <sub>peak</sub> [V/m]	137
Deviation (dB)	0.54



30 GHz System Verification



Calibration Certificate