

## APPENDIX A: POWER DENSITY TEST PLOTS

# Element

Date: 09/26/2022

Antenna M Beam 156; H; High Ch.; CW

## Device Under Test Properties

DUT	Serial Number	DUT Type
A3LSMS916U	VHO0608M	Portable Handset

## Exposure Conditions

Phantom Section	Position	Test Distance [mm]	Band	Frequency [MHz]
5G	BACK	2.00	n258	25200.00

## Hardware Setup

Probe, Calibration Date	DAE, Calibration Date
EUmmWV4 - SN9541, 05/19/2022	DAE4ip SN1638, 11/11/2021

## Software Setup

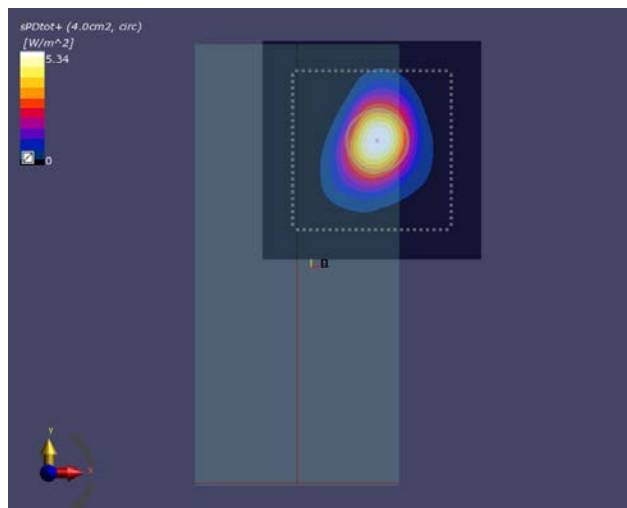
Software	Software Version
cDASY6 Module mmWave	3.0.0.841

## Scans Setup

Scan Type	5G Scan
Grid Extents [mm]	80x80
Grid Steps [lambda]	0.25 x 0.25
Sensor Surface [mm]	2.0

## Measurement Results

Scan Type	5G Scan
Avg. Area [cm <sup>2</sup> ]	4.00
pS <sub>tot</sub> avg [W/m <sup>2</sup> ]	5.34
pS <sub>n</sub> avg [W/m <sup>2</sup> ]	3.45
E <sub>peak</sub> [V/m]	70.4
Power Drift [dB]	-0.08



# Element

Date: 09/26/2022

Antenna N Beam 167; H; High Ch.; CW

## Device Under Test Properties

DUT	Serial Number	DUT Type
A3LSMS916U	VHO0601M	Portable Handset

## Exposure Conditions

Phantom Section	Position	Test Distance [mm]	Band	Frequency [MHz]
5G	Right	2.00	n258	25200.00

## Hardware Setup

Probe, Calibration Date	DAE, Calibration Date
EUmWV3 - SN9421, 03/15/2022	DAE4 SN1530, 01/12/2022

## Software Setup

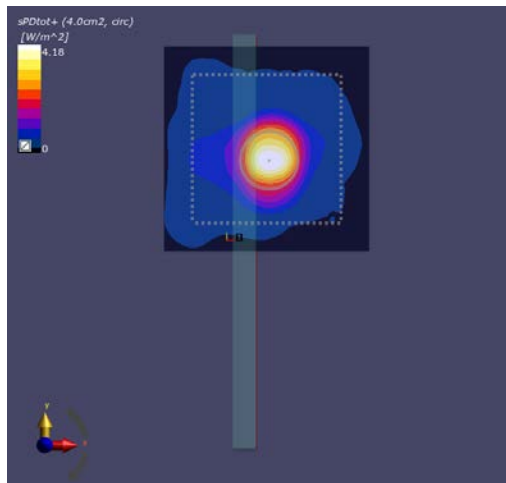
Software	Software Version
cDASY6 Module mmWave	3.0.0.841

## Scans Setup

Scan Type	5G Scan
Grid Extents [mm]	80x80
Grid Steps [lambda]	0.25 x 0.25
Sensor Surface [mm]	2.0

## Measurement Results

Scan Type	5G Scan
Avg. Area [cm <sup>2</sup> ]	4.00
pS <sub>tot</sub> avg [W/m <sup>2</sup> ]	4.18
pS <sub>n</sub> avg [W/m <sup>2</sup> ]	3.80
E <sub>peak</sub> [V/m]	80.4
Power Drift [dB]	0.03



# Element

Date: 09/26/2022

Antenna M Beam 152; H; Low Ch.; CW

## Device Under Test Properties

DUT	Serial Number	DUT Type
A3LSMS916U	VHO0608M	Portable Handset

## Exposure Conditions

Phantom Section	Position	Test Distance [mm]	Band	Frequency [MHz]
5G	BACK	2.00	n261	27550.10

## Hardware Setup

Probe, Calibration Date	DAE, Calibration Date
EUmWV4 - SN9541, 05/19/2022	DAE4ip SN1638, 11/11/2021

## Software Setup

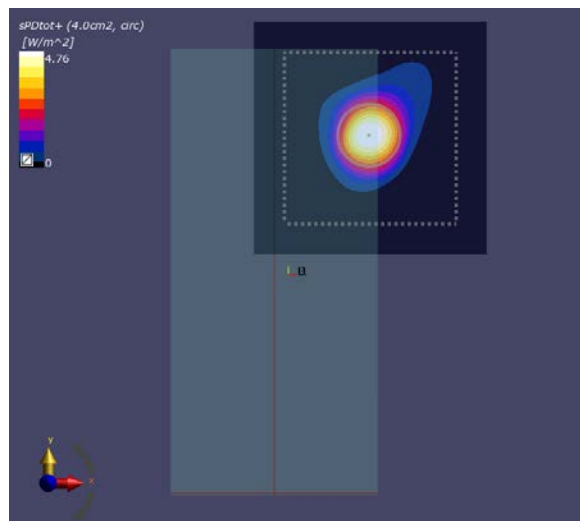
Software	Software Version
cDASY6 Module mmWave	3.0.0.841

## Scans Setup

Scan Type	5G Scan
Grid Extents [mm]	80x80
Grid Steps [lambda]	0.25 x 0.25
Sensor Surface [mm]	2.0

## Measurement Results

Scan Type	5G Scan
Avg. Area [cm <sup>2</sup> ]	4.00
pS <sub>tot</sub> avg [W/m <sup>2</sup> ]	4.76
pS <sub>n</sub> avg [W/m <sup>2</sup> ]	3.32
E <sub>peak</sub> [V/m]	80.4
Power Drift [dB]	0.05



# Element

Date: 09/26/2022

Antenna N Beam 167; H; High Ch.; CW

## Device Under Test Properties

DUT	Serial Number	DUT Type
A3LSMS916U	VHO0601M	Portable Handset

## Exposure Conditions

Phantom Section	Position	Test Distance [mm]	Band	Frequency [MHz]
5G	RIGHT	2.00	n261	28300.00

## Hardware Setup

Probe, Calibration Date	DAE, Calibration Date
EUmMWV3 - SN9421, 03/15/2022	DAE4 SN1530, 01/12/2022

## Software Setup

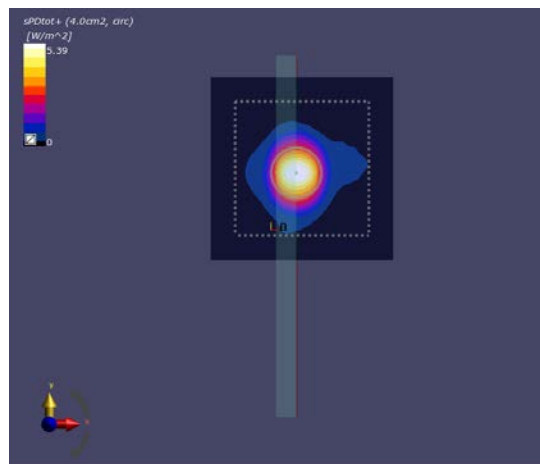
Software	Software Version
cDASY6 Module mmWave	3.0.0.841

## Scans Setup

Scan Type	5G Scan
Grid Extents [mm]	80x80
Grid Steps [lambda]	0.25 x 0.25
Sensor Surface [mm]	2.0

## Measurement Results

Scan Type	5G Scan
Avg. Area [cm <sup>2</sup> ]	4.00
pS <sub>tot</sub> avg [W/m <sup>2</sup> ]	5.39
pS <sub>n</sub> avg [W/m <sup>2</sup> ]	5.03
E <sub>peak</sub> [V/m]	81.3
Power Drift [dB]	-0.10



# Element

Date: 09/26/2022

Antenna M Beam 28; V; High Ch.; CW

## Device Under Test Properties

DUT	Serial Number	DUT Type
A3LSMS916U	VHO0608M	Portable Handset

## Exposure Conditions

Phantom Section	Position	Test Distance [mm]	Band	Frequency [MHz]
5G	BACK	2.00	n260	39949.90

## Hardware Setup

Probe, Calibration Date	DAE, Calibration Date
EUMmWV4 - SN9541, 05/19/2022	DAE4ip SN1638, 11/11/2021

## Software Setup

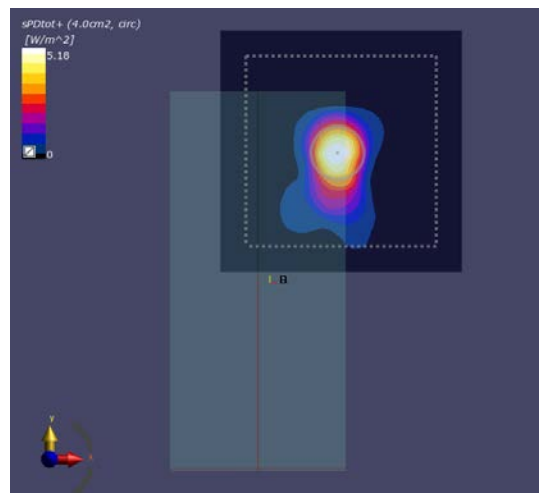
Software	Software Version
cDASY6 Module mmWave	3.0.0.841

## Scans Setup

Scan Type	5G Scan
Grid Extents [mm]	100x100
Grid Steps [lambda]	0.25 x 0.25
Sensor Surface [mm]	2.0

## Measurement Results

Scan Type	5G Scan
Avg. Area [cm <sup>2</sup> ]	4.00
pS <sub>tot</sub> avg [W/m <sup>2</sup> ]	5.18
pS <sub>n</sub> avg [W/m <sup>2</sup> ]	4.33
E <sub>peak</sub> [V/m]	90.5
Power Drift [dB]	0.19



# Element

Date: 09/26/2022

Antenna N Beam 159; H; High Ch.; CW

## Device Under Test Properties

DUT	Serial Number	DUT Type
A3LSMS916U	VHO0601M	Portable Handset

## Exposure Conditions

Phantom Section	Position	Test Distance [mm]	Band	Frequency [MHz]
5G	RIGHT	2.00	n260	39949.90

## Hardware Setup

Probe, Calibration Date	DAE, Calibration Date
EUmmWV3 - SN9421, 03/15/2022	DAE4 SN1530, 01/12/2022

## Software Setup

Software	Software Version
cDASY6 Module mmWave	3.0.0.841

## Scans Setup

Scan Type	5G Scan
Grid Extents [mm]	100x100
Grid Steps [lambda]	0.25 x 0.25
Sensor Surface [mm]	2.0

## Measurement Results

Scan Type	5G Scan
Avg. Area [cm <sup>2</sup> ]	4.00
pS <sub>tot</sub> avg [W/m <sup>2</sup> ]	3.79
pS <sub>n</sub> avg [W/m <sup>2</sup> ]	3.13
E <sub>peak</sub> [V/m]	72.5
Power Drift [dB]	0.03

