



6 - 8 GHZ RF EXPOSURE EVALUATION

Applicant Name
 SAMSUNG ELECTRONICS CO., LTD.
 #129 Samsung-Ro, Yeongtong-Gu
 Suwon-Si, Gyeonggi-Do
 16677, Korea (Republic Of)

Date of Testing
 10/05/2022 – 10/26/2022
Test Site/Location
 Element, Columbia, MD, USA
Document Serial No:
 1M2209010097-27.A3L

FCC ID: A3LSMS916U

APPLICANT: SAMSUNG ELECTRONICS CO., LTD.

DUT Type: Portable Handset
Application Type: Certification
FCC Rule Part(s): CFR §2.1093
Model: SM-S916U; SM-S916U1

Band & Mode	Tx Frequency	SAR			APD			PD
	MHz	1g Head (W/kg)	1g Body-worn (W/kg)	10g Phablet (W/kg)	Head (W/m ²)	Body-worn (W/m ²)	Phablet (W/m ²)	psPD (W/m ²)
WIFI 6 GHz	5935 - 7115	0.23	<0.1	0.57	1.486	0.41	13.98	5.05
UWB	6489.6 - 7987.2	N/A	N/A	<0.1	N/A	N/A	<0.1	0.32

Values above represent RF exposure evaluations during MIMO operations.

I attest to the accuracy of data. All measurements reported herein were performed by me or were made under my supervision and are correct to the best of my knowledge and belief. I assume full responsibility for the completeness of these measurements and vouch for the qualifications of all persons taking them. Test results reported herein relate only to the item(s) tested.

RJ Ortanez
 Executive Vice President



The SAR Tick is an initiative of the Mobile & Wireless Forum (MWF). While a product may be considered eligible, use of the SAR Tick logo requires an agreement with the MWF. Further details can be obtained by emailing: sartick@mwfai.info.

FCC ID: A3LSMS916U	6 - 8 GHZ RF EXPOSURE EVALUATION	Approved by: Technical Manager
Document S/N: 1M2209010097-27.A3L	DUT Type: Portable Handset	Page 1 of 34

TABLE OF CONTENTS

1	DEVICE UNDER TEST.....	3
2	INTRODUCTION.....	6
3	DASY E-FIELD PROBE SYSTEM.....	7
4	DOSIMETRIC ASSESSMENT.....	8
5	DEFINITION OF REFERENCE POINTS.....	9
6	TEST CONFIGURATION POSITIONS.....	10
7	RF EXPOSURE LIMITS.....	13
8	MEASUREMENT PROCEDURES.....	15
9	RF CONDUCTED POWERS.....	17
10	SYSTEM VERIFICATION.....	18
11	DATA SUMMARY.....	22
12	EQUIPMENT LIST.....	28
13	MEASUREMENT UNCERTAINTIES.....	29
15	CONCLUSION.....	31
16	REFERENCES.....	32

APPENDIX A: TEST PLOTS

APPENDIX B: SYSTEM VERIFICATION PLOTS

APPENDIX C: PROBE AND VERIFICATION SOURCE CALIBRATION CERTIFICATES

APPENDIX D: SAR TISSUE SPECIFICATIONS

APPENDIX E: SAR SYSTEM VALIDATION

APPENDIX F: DUT ANTENNA DIAGRAM AND TEST SETUP PHOTOGRAPHS

FCC ID: A3LSMS916U	6 – 8 GHZ RF EXPOSURE EVALUATION	Approved by: Technical Manager
Document S/N: 1M2209010097-27.A3L	DUT Type: Portable Handset	Page 2 of 34

1 DEVICE UNDER TEST

1.1 Device Overview

Band & Mode	Tx Frequency
U-NII-5	5935 - 6415 MHz
U-NII-6	6435 - 6515 MHz
U-NII-7	6535 - 6875 MHz
U-NII-8	6895 - 7115 MHz
UWB	6489.6 - 7987.2 MHz

1.2 Nominal and Maximum Output Power Specifications

The device operates using the following maximum and nominal output power specifications. SAR values were scaled to the maximum allowed power to determine compliance per KDB publication 447498 D04v01.

Please see 802.11ax RU SAR Exclusion Appendix from measurement report SN 1M2209010097-24.A3L for 802.11ax RU target powers.

1.2.1 Maximum MIMO WLAN Output Power

Mode	IEEE 802.11 (in dBm)			
	MIMO			
	a (CDD + STBC)		ax (SU) (CDD + STBC, SDM)	
	Nominal	Maximum	Nominal	Maximum
6 GHz WIFI (20MHz BW)	13.0	14.0	13.0	14.0
6 GHz WIFI (40MHz BW)			14.0	15.0
6 GHz WIFI (80MHz BW)			14.0	15.0
6 GHz WIFI (160MHz BW)			14.0	15.0

Note: Target powers in the above table represent worst case targets across LPI and SP options.

FCC ID: A3LSMS916U	6 – 8 GHZ RF EXPOSURE EVALUATION	Approved by: Technical Manager
Document S/N: 1M2209010097-27.A3L	DUT Type: Portable Handset	Page 3 of 34

1.3 DUT Antenna Locations

The overall dimensions of this device are > 9 x 5 cm. A diagram showing the location of the device antennas can be found in SAR Part 1 Report, DUT Antenna Diagram & SAR Test Setup Photographs Appendix. Since the display diagonal dimension of this device is > 150 mm and <200 mm, it is considered a “phablet”. Exact antenna dimensions and separation distances are shown in the Technical Descriptions in the FCC filing.

**Table 1-1
Device Surfaces**

Device Sides/Edges for Testing						
Mode	Back	Front	Top	Bottom	Right	Left
6 GHz WLAN MIMO	Yes	Yes	Yes	No	Yes	Yes
UWB Ant 1	Yes	Yes	Yes	No	No	Yes
UWB Ant 2	Yes	Yes	No	No	No	No

Note: Particular DUT edges were not required to be evaluated for phablet SAR if the edges were greater than 2.5 cm from the transmitting antenna according to FCC KDB Publication 648474 D04v01r03. The distances between the transmit antennas and the edges of the device are included in the filing. Wireless router mode is disabled for all 6 GHz WLAN operations. Some edges were additionally evaluated for UWB per manufacturer's request.

FCC ID: A3LSMS916U	6 – 8 GHZ RF EXPOSURE EVALUATION	Approved by: Technical Manager
Document S/N: 1M2209010097-27.A3L	DUT Type: Portable Handset	Page 4 of 34

1.4 Miscellaneous Testing Considerations

Per FCC guidance, SAR was performed using 6.5 GHz SAR probe calibration factors for WIFI 6GHz/UWB and 8GHz SAR probe calibration factors for UWB. FCC KDB 648474, FCC KDB 941225 D07 and FCC KDB 248227 were followed for test positions, distances, and modes. Absorbed power density (APD) using a 4cm² averaging area is reported based on SAR measurements. Incident power density is evaluated at 2mm ensuring that the resolution is sufficient such that integrated power density (iPD) between d=2mm and d=λ/5mm is ≥ -1dB per equipment manufacturer guidance. Power density results are scaled up for uncertainty above 30%. Per TCB workshop October 2020 notes, 5 channels were tested for WIFI 6 GHz.

Per FCC KDB Publication 648474 D04v01r03, this device is considered a "phablet" since the diagonal dimension is greater than 160mm and less than 200mm. Therefore, phablet SAR tests are required when wireless router mode does not apply or if wireless router 1g SAR > 1.2 W/kg.

6 GHz WIFI SAR results and UWB SAR results are used for simultaneous transmission analysis with the other transmitters and total exposure ratio (TER). Analysis can be found in SAR report and Near Field PD Report.

To make the most efficient use of the additional available subcarriers (data tones), IEEE 802.11ax can utilize Orthogonal Frequency-Division Multiple Access (OFDMA) which divides the existing 802.11 channels into smaller subchannels called Resource Units (RUs). Possible RU sizes are: 26T, 52T, 106T, 242T, 484T, 996T, and 996T*2.

Per FCC Guidance, 802.11ax RU was considered a higher order 802.11 mode when compared to a/b/g/n/ac to apply KDB Publication 248227 D01v02r02 for OFDM mode selection. Therefore, SAR tests were not required for 802.11ax RU based on the maximum allowed output powers of OFDM modes and the reported SAR values. Per FCC Guidance, maximum conducted powers were performed for each RU size to demonstrate that the output powers would not be higher than the other OFDM 802.11 modes. Please see 802.11ax RU SAR Exclusion Appendix from measurement report SN 1M2209010097-24.A3L for 802.11ax RU output powers.

1.5 Guidance Applied

- November 2017, October 2018, April 2019, November 2019, October 2020 TCBC Workshop Notes
- SPEAG DASY6 System Handbook
- SPEAG DASY6 Application Note (Interim Procedures for Devices Operating at 6-10 GHz) (Nov 2021)
- IEEE 1528-2013
- IEC/IEEE 63195-1:2022
- IEC 62479:2010
- FCC KDB 865664 D02 v01r02
- FCC KDB 648474 D04 v01r03
- FCC KDB 248227 D01 v02r02
- FCC KDB 447498 D04 v01
- FCC KDB 865664 D01 v01r04
- April 2019 TCB Workshop Notes (IEEE 802.11ax)

FCC ID: A3LSMS916U	6 – 8 GHZ RF EXPOSURE EVALUATION	Approved by: Technical Manager
Document S/N: 1M2209010097-27.A3L	DUT Type: Portable Handset	Page 5 of 34

2 INTRODUCTION

The FCC and Innovation, Science, and Economic Development Canada have adopted the guidelines for evaluating the environmental effects of radio frequency (RF) radiation in ET Docket 93-62 on Aug. 6, 1996, and Health Canada Safety Code 6 to protect the public and workers from the potential hazards of RF emissions due to FCC-regulated portable devices. [15]

The safety limits used for the environmental evaluation measurements are based on the criteria published by the American National Standards Institute (ANSI) for localized specific absorption rate (SAR) in IEEE/ANSI C95.1-1992 Standard for Safety Levels with Respect to Human Exposure to Radio Frequency Electromagnetic Fields, 3 kHz to 300 GHz [44] and Health Canada RF Exposure Guidelines Safety Code 6 [35]. The measurement procedure described in IEEE/ANSI C95.3-2002 Recommended Practice for the Measurement of Potentially Hazardous Electromagnetic Fields - RF and Microwave [17] is used for guidance in measuring the Specific Absorption Rate (SAR) due to the RF radiation exposure from the Equipment Under Test (EUT). These criteria for SAR evaluation are similar to those recommended by the International Committee for Non-Ionizing Radiation Protection (ICNIRP) in Biological Effects and Exposure Criteria for Radiofrequency Electromagnetic Fields,” Report No. Vol 74. SAR is a measure of the rate of energy absorption due to exposure to an RF transmitting source. SAR values have been related to threshold levels for potential biological hazards.

2.1 SAR Definition

Specific Absorption Rate is defined as the time derivative (rate) of the incremental energy (dU) absorbed by (dissipated in) an incremental mass (dm) contained in a volume element (dV) of a given density (ρ). It is also defined as the rate of RF energy absorption per unit mass at a point in an absorbing body (see Equation 2-1).

Equation 2-1
SAR Mathematical Equation

$$SAR = \frac{d}{dt} \left(\frac{dU}{dm} \right) = \frac{d}{dt} \left(\frac{dU}{\rho dv} \right)$$

SAR is expressed in units of Watts per Kilogram (W/kg).

$$SAR = \frac{\sigma \cdot E^2}{\rho}$$

where:

σ	=	conductivity of the tissue-simulating material (S/m)
ρ	=	mass density of the tissue-simulating material (kg/m ³)
E	=	Total RMS electric field strength (V/m)

NOTE: The primary factors that control rate of energy absorption were found to be the wavelength of the incident field in relation to the dimensions and geometry of the irradiated organism, the orientation of the organism in relation to the polarity of field vectors, the presence of reflecting surfaces, and whether conductive contact is made by the organism with a ground plane.[20]

FCC ID: A3LSMS916U	6 – 8 GHZ RF EXPOSURE EVALUATION	Approved by: Technical Manager
Document S/N: 1M2209010097-27.A3L	DUT Type: Portable Handset	Page 6 of 34

REV 2.0

3 DASY E-FIELD PROBE SYSTEM

3.1 Probe Measurement System



**Figure 4-1
SAR System**

The SAR measurements were conducted with the dosimetric probe designed in the classical triangular configuration (see Figure 4-3) and optimized for dosimetric evaluation. The probe is constructed using the thick film technique, with printed resistive lines on ceramic substrates. The probe is equipped with an optical multi-fiber line ending at the front of the probe tip. It is connected to the EOC box on the robot arm and provides an automatic detection of the phantom surface. Half of the fibers are connected to a pulsed infrared transmitter, the other half to a synchronized receiver. As the probe approaches the surface, the reflection from the surface produces a coupling from the transmitting to the receiving fibers. This reflection increases first during the approach, reaches maximum and then decreases. If the probe is flatly touching the surface, the coupling is zero. The distance of the coupling maximum to the surface is independent of the surface reflectivity and largely independent of the surface to probe angle. The DASY software reads the reflection during a software approach and looks for the maximum using a 2nd order curve fitting. The approach is stopped at reaching the maximum.

3.2 Probe Specifications

Model(s):	EX3DV4
Frequency Range:	10 MHz – 10.0 GHz (EX3DV4)
Calibration:	In head and body simulating tissue at Frequencies from 300 up to 6000MHz
Linearity:	± 0.2 dB (30 MHz to 6 GHz) for EX3DV4
Dynamic Range:	10 mW/kg – 100 W/kg
Probe Length:	330 mm
Probe Tip Length:	20 mm
Body Diameter:	12 mm
Tip Diameter:	2.5 mm for EX3DV4
Tip-Center:	1 mm for EX3DV4



**Figure 4-2
Near-Field Probe**



**Figure 4-3
Triangular Probe Configuration**

FCC ID: A3LSMS916U	6 – 8 GHZ RF EXPOSURE EVALUATION	Approved by: Technical Manager
Document S/N: 1M2209010097-27.A3L	DUT Type: Portable Handset	Page 7 of 34

4 DOSIMETRIC ASSESSMENT

4.1 Measurement Procedure

The evaluation was performed using the following procedure compliant to FCC KDB Publication 865664 D01v01r04 and IEEE 1528-2013:

1. The SAR distribution at the exposed side of the head or body was measured at a distance no greater than 5.0 mm from the inner surface of the shell. The area covered the entire dimension of the device-head and body interface, and the horizontal grid resolution was determined per FCC KDB Publication 865664 D01v01r04 (See Table 4-1) and IEEE 1528-2013.
2. The point SAR measurement was taken at the maximum SAR region determined from Step 1 to enable the monitoring of SAR fluctuations/drifts during the 1g/10g cube evaluation. SAR at this fixed point was measured and used as a reference value.
3. Based on the area scan data, the peak of the region with maximum SAR was determined by spline interpolation. Around this point, a volume was assessed according to the measurement resolution and volume size requirements of FCC KDB Publication 865664 D01v01r04 (See Table 4-1) and IEEE 1528-2013. On the basis of this data set, the spatial peak SAR value was evaluated with the following procedure (see references or the DASY manual online for more details):
 - a. SAR values at the inner surface of the phantom are extrapolated from the measured values along the line away from the surface with spacing no greater than that in Table 4-1. The extrapolation was based on a least-squares algorithm. A polynomial of the fourth order was calculated through the points in the z-axis (normal to the phantom shell).
 - b. After the maximum interpolated values were calculated between the points in the cube, the SAR was averaged over the spatial volume (1g or 10g) using a 3D-Spline interpolation algorithm. The 3D-spline is composed of three one-dimensional splines with the “Not a knot” condition (in x, y, and z directions). The volume was then integrated with the trapezoidal algorithm. One thousand points (10 x 10 x 10) were obtained through interpolation, in order to calculate the averaged SAR.
 - c. All neighboring volumes were evaluated until no neighboring volume with a higher average value was found.
4. The SAR reference value, at the same location as step 2, was re-measured after the zoom scan was complete to calculate the SAR drift. If the drift deviated by more than 5%, the SAR test and drift measurements were repeated.

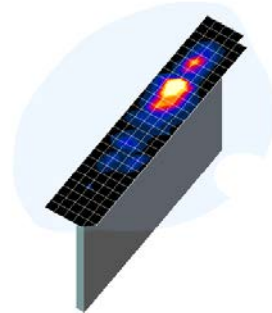


Figure 4-1
Sample SAR Area Scan

Table 4-1
Area and Zoom Scan Resolutions per FCC KDB Publication 865664 D01v01r04*

Frequency	Maximum Area Scan Resolution (mm) ($\Delta x_{area}, \Delta y_{area}$)	Maximum Zoom Scan Resolution (mm) ($\Delta x_{zoom}, \Delta y_{zoom}$)	Maximum Zoom Scan Spatial Resolution (mm)			Minimum Zoom Scan Volume (mm) (x, y, z)
			Uniform Grid	Graded Grid		
				$\Delta z_{zoom}(n)$	$\Delta z_{zoom}(1)^*$	
≤ 2 GHz	≤ 15	≤ 8	≤ 5	≤ 4	≤ 1.5* $\Delta z_{zoom}(n-1)$	≥ 30
2-3 GHz	≤ 12	≤ 5	≤ 5	≤ 4	≤ 1.5* $\Delta z_{zoom}(n-1)$	≥ 30
3-4 GHz	≤ 12	≤ 5	≤ 4	≤ 3	≤ 1.5* $\Delta z_{zoom}(n-1)$	≥ 28
4-5 GHz	≤ 10	≤ 4	≤ 3	≤ 2.5	≤ 1.5* $\Delta z_{zoom}(n-1)$	≥ 25
5-6 GHz	≤ 10	≤ 4	≤ 2	≤ 2	≤ 1.5* $\Delta z_{zoom}(n-1)$	≥ 22

*Also compliant to IEEE 1528-2013 Table 6

FCC ID: A3LSMS916U	6 – 8 GHZ RF EXPOSURE EVALUATION	Approved by: Technical Manager
Document S/N: 1M2209010097-27.A3L	DUT Type: Portable Handset	Page 8 of 34

5 DEFINITION OF REFERENCE POINTS

5.1 EAR REFERENCE POINT

Figure 5-2 shows the front, back and side views of the SAM Twin Phantom. The point “M” is the reference point for the center of the mouth, “LE” is the left ear reference point (ERP), and “RE” is the right ERP. The ERP is 15mm posterior to the entrance to the ear canal (EEC) along the B-M line (Back-Mouth), as shown in Figure 5-1. The plane passing through the two ear canals and M is defined as the Reference Plane. The line N-F (Neck-Front), also called the Reference Pivoting Line, is not perpendicular to the reference plane (see Figure 5-1). Line B-M is perpendicular to the N-F line. Both N-F and B-M lines are marked on the external phantom shell to facilitate handset positioning [18].

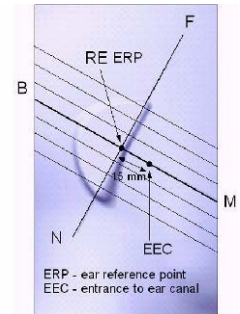


Figure 5-1
Close-Up Side view of ERP

5.2 HANDSET REFERENCE POINTS

Two imaginary lines on the handset were established: the vertical centerline and the horizontal line. The test device was placed in a normal operating position with the acoustic output located along the “vertical centerline” on the front of the device aligned to the “ear reference point” (See Figure 5-3). The acoustic output was then located at the same level as the center of the ear reference point. The test device was positioned so that the “vertical centerline” was bisecting the front surface of the handset at its top and bottom edges, positioning the “ear reference point” on the outer surface of the both the left and right head phantoms on the ear reference point.



Figure 5-2
Front, back and side view of SAM Twin Phantom

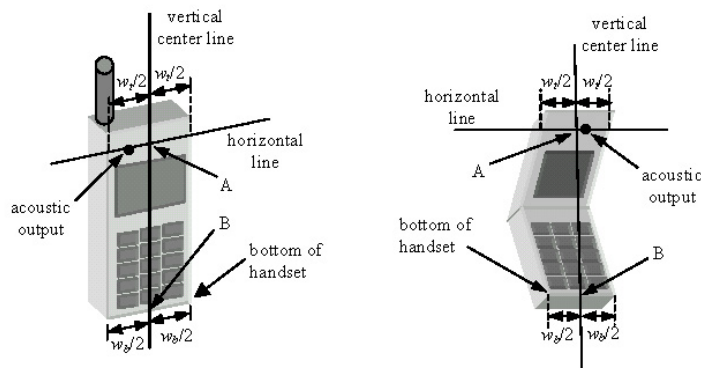


Figure 5-3
Handset Vertical Center & Horizontal Line Reference Points

FCC ID: A3LSMS916U	6 – 8 GHZ RF EXPOSURE EVALUATION	Approved by: Technical Manager
Document S/N: 1M2209010097-27.A3L	DUT Type: Portable Handset	Page 9 of 34

6 TEST CONFIGURATION POSITIONS

6.1 Device Holder

The device holder is made out of low-loss POM material having the following dielectric parameters: relative permittivity $\epsilon = 3$ and loss tangent $\delta = 0.02$.

6.2 Positioning for Cheek

1. The test device was positioned with the device close to the surface of the phantom such that point A is on the (virtual) extension of the line passing through points RE and LE on the phantom (see Figure 6-1), such that the plane defined by the vertical center line and the horizontal line of the phone is approximately parallel to the sagittal plane of the phantom.

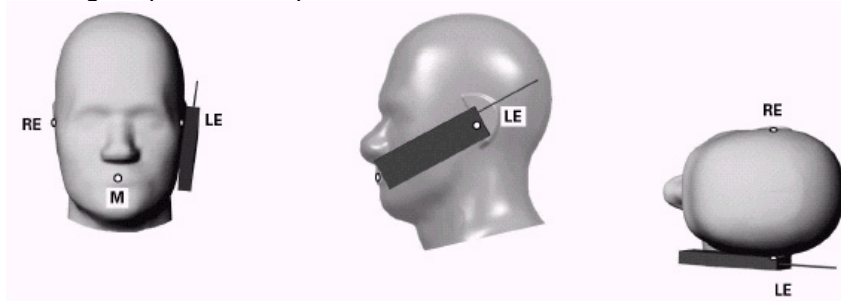


Figure 6-1 Front, Side and Top View of Cheek Position

2. The handset was translated towards the phantom along the line passing through RE & LE until the handset touches the pinna.
3. While maintaining the handset in this plane, the handset was rotated around the LE-RE line until the vertical centerline was in the reference plane.
4. The phone was then rotated around the vertical centerline until the phone (horizontal line) was symmetrical with respect to the line NF.
5. While maintaining the vertical centerline in the reference plane, keeping point A on the line passing through RE and LE, and maintaining the device contact with the ear, the device was rotated about the NF line until any point on the handset made contact with a phantom point below the ear (cheek) (See Figure 6-2).

6.3 Positioning for Ear / 15° Tilt

With the test device aligned in the “Cheek Position”:

1. While maintaining the orientation of the phone, the phone was retracted parallel to the reference plane far enough to enable a rotation of the phone by 15 degrees.
2. The phone was then rotated around the horizontal line by 15 degrees.
3. While maintaining the orientation of the phone, the phone was moved parallel to the reference plane until any part of the handset touched the head. (In this position, point A was located on the line RE-LE). The tilted position is obtained when the contact is on the pinna. If the contact was at any location other than the pinna, the angle of the phone would then be reduced. In this situation, the tilted position was obtained when any part of the phone was in contact of the ear as well as a second part of the phone was in contact with the head (see Figure 6-2).

FCC ID: A3LSMS916U	6 – 8 GHZ RF EXPOSURE EVALUATION	Approved by: Technical Manager
Document S/N: 1M2209010097-27.A3L	DUT Type: Portable Handset	Page 10 of 34

REV 2.0

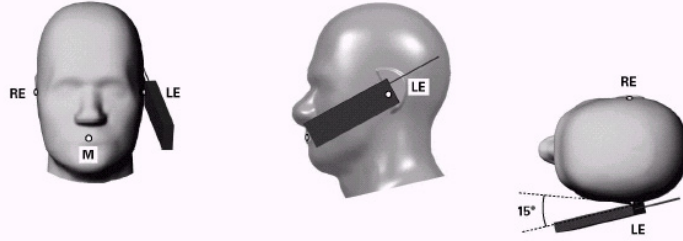


Figure 6-2 Front, Side and Top View of Ear/15° Tilt Position

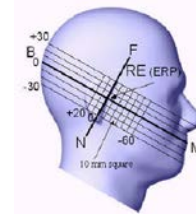


Figure 6-3 Side view w/ relevant markings

6.4 Body-Worn Accessory Configurations

Body-worn operating configurations are tested with the belt-clips and holsters attached to the device and positioned against a flat phantom in a normal use configuration (see Figure 6-4). Per FCC KDB Publication 648474 D04v01r03, Body-worn accessory exposure is typically related to voice mode operations when handsets are carried in body-worn accessories. The body-worn accessory procedures in FCC KDB Publication 447498 D04v01 should be used to test for body-worn accessory SAR compliance, without a headset connected to it. This enables the test results for such configuration to be compatible with that required for hotspot mode when the body-worn accessory test separation distance is greater than or equal to that required for hotspot mode, when applicable. When the reported SAR for a body-worn accessory, measured without a headset connected to the handset, is $> 1.2 \text{ W/kg}$, the highest reported SAR configuration for that wireless mode and frequency band should be repeated for that body-worn accessory with a headset attached to the handset.

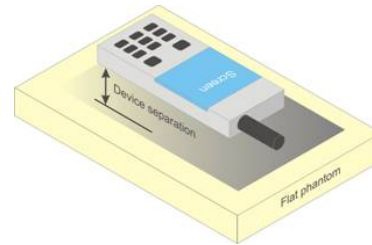


Figure 6-4 Sample Body-Worn Diagram

Accessories for Body-worn operation configurations are divided into two categories: those that do not contain metallic components and those that do contain metallic components. When multiple accessories that do not contain metallic components are supplied with the device, the device is tested with only the accessory that dictates the closest spacing to the body. Then multiple accessories that contain metallic components are tested with the device with each accessory. If multiple accessories share an identical metallic component (i.e. the same metallic belt-clip used with different holsters with no other metallic components) only the accessory that dictates the closest spacing to the body is tested.

Body-worn accessories may not always be supplied or available as options for some devices intended to be authorized for body-worn use. In this case, a test configuration with a separation distance between the back of the device and the flat phantom is used. Test position spacing was documented. Transmitters that are designed to operate in front of a person's face, as in push-to-talk configurations, are tested for SAR compliance with the front of the device positioned to face the flat phantom in head fluid. For devices that are carried next to the body such as a shoulder, waist or chest-worn transmitters, SAR compliance is tested with the accessories, including headsets and microphones, attached to the device, and positioned against a flat phantom in a normal use configuration.

6.5 Extremity Exposure Configurations

Devices that are designed or intended for use on extremities or mainly operated in extremity only exposure conditions, i.e., hands, wrists, feet and ankles, may require extremity SAR evaluation. When the device also operates in close proximity to the user's body, SAR compliance for the body is also required. The 1g body and

FCC ID: A3LSMS916U	6 – 8 GHZ RF EXPOSURE EVALUATION	Approved by: Technical Manager
Document S/N: 1M2209010097-27.A3L	DUT Type: Portable Handset	Page 11 of 34

10g extremity SAR Exclusion Thresholds found in KDB Publication 447498 D04v01 should be applied to determine SAR test requirements.

Per KDB Publication 447498 D04v01, Cell phones (handsets) are not normally designed to be used on extremities or operated in extremity only exposure conditions. The maximum output power levels of handsets generally do not require extremity SAR testing to show compliance. Therefore, extremity SAR was not evaluated for this device.

6.6 Phablet Configurations

For smart phones with a display diagonal dimension > 150 mm or an overall diagonal dimension > 160 mm that provide similar mobile web access and multimedia support found in mini-tablets or UMPC mini-tablets that support voice calls next to the ear, the phablets procedures outlined in KDB Publication 648474 D04v01r03 should be applied to evaluate SAR compliance. A device marketed as phablets, regardless of form factors and operating characteristics must be tested as a phablet to determine SAR compliance. In addition to the normally required head and body-worn accessory SAR test procedures required for handsets, the UMPC mini-tablet procedures must also be applied to test the SAR of all surfaces and edges with an antenna ≤ 25 mm from that surface or edge, in direct contact with the phantom, for 10g SAR. The UMPC mini-tablet 1g SAR at 5 mm is not required. When hotspot mode applies, 10g SAR is required only for the surfaces and edges with hotspot mode 1g SAR > 1.2 W/kg.

FCC ID: A3LSMS916U	6 – 8 GHZ RF EXPOSURE EVALUATION	Approved by: Technical Manager
Document S/N: 1M2209010097-27.A3L	DUT Type: Portable Handset	Page 12 of 34

7 RF EXPOSURE LIMITS

7.1 Uncontrolled Environment

UNCONTROLLED ENVIRONMENTS are defined as locations where there is the exposure of individuals who have no knowledge or control of their exposure. The general population/uncontrolled exposure limits are applicable to situations in which the general public may be exposed or in which persons who are exposed as a consequence of their employment may not be made fully aware of the potential for exposure or cannot exercise control over their exposure. Members of the general public would come under this category when exposure is not employment-related; for example, in the case of a wireless transmitter that exposes persons in its vicinity.

7.2 Controlled Environment

CONTROLLED ENVIRONMENTS are defined as locations where there is exposure that may be incurred by persons who are aware of the potential for exposure, (i.e., as a result of employment or occupation). In general, occupational/controlled exposure limits are applicable to situations in which persons are exposed as a consequence of their employment, who have been made fully aware of the potential for exposure and can exercise control over their exposure. This exposure category is also applicable when the exposure is of a transient nature due to incidental passage through a location where the exposure levels may be higher than the general population/uncontrolled limits, but the exposed person is fully aware of the potential for exposure and can exercise control over his or her exposure by leaving the area or by some other appropriate means.

7.3 RF Exposure Limits for Frequencies Below 6 GHz

Table 7-1
SAR Human Exposure Specified in ANSI/IEEE C95.1-1992 and Health Canada Safety Code 6

HUMAN EXPOSURE LIMITS		
	UNCONTROLLED ENVIRONMENT <i>General Population</i> (W/kg) or (mW/g)	CONTROLLED ENVIRONMENT <i>Occupational</i> (W/kg) or (mW/g)
Peak Spatial Average SAR Head	1.6	8.0
Whole Body SAR	0.08	0.4
Peak Spatial Average SAR Hands, Feet, Ankle, Wrists, etc.	4.0	20

1. The Spatial Peak value of the SAR averaged over any 1 gram of tissue (defined as a tissue volume in the shape of a cube) and over the appropriate averaging time.
2. The Spatial Average value of the SAR averaged over the whole body.
3. The Spatial Peak value of the SAR averaged over any 10 grams of tissue (defined as a tissue volume in the shape of a cube) and over the appropriate averaging time.

FCC ID: A3LSMS916U	6 – 8 GHZ RF EXPOSURE EVALUATION	Approved by: Technical Manager
Document S/N: 1M2209010097-27.A3L	DUT Type: Portable Handset	Page 13 of 34

7.4 RF Exposure Limits for Frequencies Above 6 GHz

Per §1.1310 (d)(3), the MPE limits are applied for frequencies above 6 GHz. Power Density is expressed in units of W/m² or mW/cm².

Peak Spatially Averaged Power Density was evaluated over a circular area of 4 cm² per interim FCC Guidance for near-field power density evaluations per October 2018 TCB Workshop notes.

**Table 7-2
Human Exposure Limits Specified in FCC 47 CFR §1.1310**

Human Exposure to Radiofrequency (RF) Radiation Limits		
Frequency Range [MHz]	Power Density [mW/cm ²]	Average Time [Minutes]
(A) Limits For Occupational / Controlled Environments		
1,500 – 100,000	5.0	6
(B) Limits For General Population / Uncontrolled Environments		
1,500 – 100,000	1.0	30

Note: 1.0 mW/cm² is 10 W/m²

FCC ID: A3LSMS916U	6 – 8 GHZ RF EXPOSURE EVALUATION	Approved by: Technical Manager
Document S/N: 1M2209010097-27.A3L	DUT Type: Portable Handset	Page 14 of 34

REV 2.0

8 MEASUREMENT PROCEDURES

8.1 Measured and Reported SAR

Per FCC KDB Publication 447498 D04v01, when SAR is not measured at the maximum power level allowed for production units, the results must be scaled to the maximum tune-up tolerance limit according to the power applied to the individual channels tested to determine compliance. For simultaneous transmission, the measured aggregate SAR must be scaled according to the sum of the differences between the maximum tune-up tolerance and actual power used to test each transmitter. When SAR is measured at or scaled to the maximum tune-up tolerance limit, the results are referred to as *reported* SAR. The highest *reported* SAR results are identified on the grant of equipment authorization according to procedures in KDB 690783 D01v01r03.

8.2 SAR Testing with 802.11 Transmitters

The normal network operating configurations of 802.11 transmitters are not suitable for SAR measurements. Unpredictable fluctuations in network traffic and antenna diversity conditions can introduce undesirable variations in SAR results. The SAR for these devices should be measured using chipset-based test mode software to ensure the results are consistent and reliable. See KDB Publication 248227 D01v02r02 for more details.

8.3 General Device Setup

Chipset based test mode software is hardware dependent and generally varies among manufacturers. The device operating parameters established in test mode for SAR measurements must be identical to those programmed in production units, including output power levels, amplifier gain settings and other RF performance tuning parameters.

A periodic duty factor is required for current generation SAR systems to measure SAR. When 802.11 frame gaps are accounted for in the transmission, a maximum transmission duty factor of 92 - 96% is typically achievable in most test mode configurations. A minimum transmission duty factor of 85% is required to avoid certain hardware and device implementation issues related to wide range SAR scaling. The reported SAR is scaled to 100% transmission duty factor to determine compliance at the maximum tune-up tolerance limit.

8.4 Initial Test Position Procedure

For exposure conditions with multiple test positions, such as handset operating next to the ear, devices with hotspot mode or UMPC mini-tablet, procedures for initial test position can be applied. Using the transmission mode determined by the DSSS procedure or initial test configuration, area scans are measured for all positions in an exposure condition. The test position with the highest extrapolated (peak) SAR is used as the initial test position. When reported SAR for the initial test position is ≤ 0.4 W/kg, no additional testing for the remaining test positions is required. Otherwise, SAR is evaluated at the subsequent highest peak SAR positions until the reported SAR result is ≤ 0.8 W/kg or all test positions are measured. When 10g SAR measurement is considered, a factor of 2.5 is applied to the thresholds above.

8.5 OFDM Transmission Mode and SAR Test Channel Selection

When the same maximum output power was specified for multiple OFDM transmission mode configurations in a frequency band or aggregated band, SAR is measured using the configuration with the largest channel bandwidth, lowest order modulation and lowest data rate. When the maximum output power of a channel is the same for equivalent OFDM configurations; for example, 802.11a, 802.11n and 802.11ac or 802.11g and 802.11n with the same channel bandwidth, modulation and data rate etc., the

FCC ID: A3LSMS916U	6 – 8 GHZ RF EXPOSURE EVALUATION	Approved by: Technical Manager
Document S/N: 1M2209010097-27.A3L	DUT Type: Portable Handset	Page 15 of 34

lower order 802.11 mode i.e., 802.11a, then 802.11n and 802.11ac or 802.11g then 802.11n, is used for SAR measurement. Per April 2019 TCB Workshop guidance, 802.11ax was considered the highest order 802.11 mode. When the maximum output power are the same for multiple test channels, either according to the default or additional power measurement requirements, SAR is measured using the channel closest to the middle of the frequency band or aggregated band. When there are multiple channels with the same maximum output power, SAR is measured using the higher number channel.

8.6 Initial Test Configuration Procedure

For OFDM, an initial test configuration is determined for each frequency band and aggregated band, according to the transmission mode with the highest maximum output power specified for SAR measurements. When the same maximum output power is specified for multiple OFDM transmission mode configurations in a frequency band or aggregated band, SAR is measured using the configuration(s) with the largest channel bandwidth, lowest order modulation, lowest data rate and lowest order IEEE 802.11 mode. The channel of the transmission mode with the highest average RF output conducted power will be the initial test configuration.

When the reported SAR is ≤ 0.8 W/kg, no additional measurements on other test channels are required. Otherwise, SAR is evaluated using the subsequent highest average RF output channel until the reported SAR result is ≤ 1.2 W/kg or all channels are measured. When there are multiple untested channels having the same subsequent highest average RF output power, the channel with higher frequency from the lowest 802.11 mode is considered for SAR measurements (See Section 8.5). When 10g SAR measurement is considered, a factor of 2.5 is applied to the thresholds above.

8.7 Subsequent Test Configuration Procedures

For OFDM configurations in each frequency band and aggregated band, SAR is evaluated for initial test configuration using the fixed test position or the initial test position procedure. When the highest reported SAR (for the initial test configuration), adjusted by the ratio of the specified maximum output power of the subsequent test configuration to initial test configuration, is ≤ 1.2 W/kg, no additional SAR tests for the subsequent test configurations are required. When 10g SAR measurement is considered, a factor of 2.5 is applied to the thresholds above.

8.8 MIMO SAR Considerations

Per KDB Publication 248227 D01v02r02, the simultaneous SAR provisions in KDB Publication 447498 D04v01 should be applied to determine simultaneous transmission SAR test exclusion for WIFI MIMO. If the sum of 1g single transmission chain SAR measurements is <1.6 W/kg, no additional SAR measurements for MIMO are required. Alternatively, SAR for MIMO can be measured with all antennas transmitting simultaneously at the specified maximum output power of MIMO operation. When 10g SAR measurement is considered, a factor of 2.5 is applied to the thresholds above.

FCC ID: A3LSMS916U	6 – 8 GHZ RF EXPOSURE EVALUATION	Approved by: Technical Manager
Document S/N: 1M2209010097-27.A3L	DUT Type: Portable Handset	Page 16 of 34

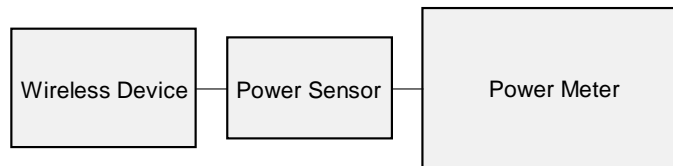
9 RF CONDUCTED POWERS

**Table 9-1
6 GHz WLAN Maximum Average RF Power – 802.11ax 80 MHz BW**

6GHz (80MHz) 802.11ax Conducted Power [dBm]				
Freq [MHz]	Channel	ANT1	ANT2	MIMO
5985	7	11.75	11.61	14.69
6305	71	11.78	11.60	14.70
6545	119	11.82	11.64	14.74
6785	167	11.99	11.48	14.75
7025	215	11.99	11.24	14.64

Justification for test configurations for WLAN per KDB Publication 248227 D01v02r02:

- Power measurements were performed for the transmission mode configuration with the highest maximum output power specified for production units.
- For transmission modes with identical maximum specified output power, channel bandwidth, modulation and data rates, power measurements were required for all identical configurations.



**Figure 9-1
Power Measurement Setup**

FCC ID: A3LSMS916U	6 – 8 GHZ RF EXPOSURE EVALUATION	Approved by: Technical Manager
Document S/N: 1M2209010097-27.A3L	DUT Type: Portable Handset	Page 17 of 34

10 SYSTEM VERIFICATION

10.1 SAR Test System Verification

**Table 10-1
Measured Tissue Properties**

Calibrated for Tests Performed on:	Tissue Type	Tissue Temp During Calibration (°C)	Measured Frequency (MHz)	Measured Conductivity, σ (S/m)	Measured Dielectric Constant, ϵ	TARGET Conductivity, σ (S/m)	TARGET Dielectric Constant, ϵ	% dev σ	% dev ϵ
10/19/2022	6500 Head	20.7	5935	5.425	34.779	5.411	35.143	0.26%	-1.04%
			5970	5.470	34.615	5.448	35.120	0.40%	-1.44%
			5985	5.514	34.586	5.464	35.110	0.92%	-1.49%
			6000	5.553	34.591	5.480	35.100	1.33%	-1.45%
			6025	5.585	34.643	5.510	35.070	1.36%	-1.22%
			6065	5.569	34.531	5.557	35.022	0.22%	-1.40%
			6075	5.577	34.475	5.569	35.010	0.14%	-1.53%
			6085	5.598	34.423	5.580	34.998	0.32%	-1.64%
			6185	5.724	34.311	5.698	34.878	0.46%	-1.63%
			6275	5.859	34.174	5.805	34.770	0.93%	-1.71%
			6285	5.854	34.175	5.816	34.758	0.65%	-1.68%
			6305	5.851	34.141	5.840	34.734	0.19%	-1.71%
			6345	5.935	33.955	5.887	34.686	0.82%	-2.11%
			6475	6.103	33.769	6.041	34.530	1.03%	-2.20%
			6485	6.120	33.768	6.052	34.518	1.12%	-2.17%
			6500	6.129	33.803	6.070	34.500	0.97%	-2.02%
			6505	6.130	33.814	6.076	34.494	0.89%	-1.97%
			6545	6.138	33.760	6.122	34.446	0.26%	-1.99%
			6665	6.266	33.511	6.265	34.302	0.02%	-2.31%
			6675	6.274	33.458	6.273	34.290	0.02%	-2.43%
			6685	6.287	33.419	6.285	34.278	0.03%	-2.51%
			6715	6.348	33.362	6.319	34.242	0.46%	-2.57%
			6785	6.410	33.275	6.400	34.158	0.16%	-2.59%
			6825	6.471	33.183	6.447	34.110	0.37%	-2.72%
			6985	6.640	33.048	6.633	33.918	0.11%	-2.57%
			6995	6.643	33.052	6.644	33.906	-0.02%	-2.52%
			7000	6.643	33.045	6.650	33.900	-0.11%	-2.52%
			7005	6.645	33.034	6.656	33.894	-0.17%	-2.54%
7025	6.663	32.961	6.680	33.870	-0.25%	-2.68%			
7500	7.221	32.097	7.240	33.300	-0.26%	-3.61%			
7980	7.786	31.419	7.816	32.724	-0.38%	-3.99%			
8000	7.811	31.428	7.840	32.700	-0.37%	-3.89%			
10/26/2022	6500 Head	22.3	5935	5.369	34.351	5.411	35.143	-0.78%	-2.25%
			5970	5.405	34.225	5.448	35.12	-0.79%	-2.55%
			6000	5.458	34.223	5.48	35.1	-0.40%	-2.50%
			6025	5.49	34.206	5.51	35.07	-0.36%	-2.46%
			6065	5.518	34.067	5.557	35.022	-0.70%	-2.73%
			6075	5.525	34.013	5.569	35.01	-0.79%	-2.85%
			6085	5.534	33.989	5.58	34.998	-0.82%	-2.88%
			6185	5.668	33.847	5.698	34.878	-0.53%	-2.96%
			6275	5.795	33.709	5.805	34.77	-0.17%	-3.05%
			6305	5.81	33.683	5.84	34.734	-0.51%	-3.03%
			6345	5.889	33.578	5.887	34.686	0.03%	-3.19%
			6475	6.051	33.341	6.041	34.53	0.17%	-3.44%
			6500	6.077	33.383	6.07	34.5	0.12%	-3.24%
			6545	6.106	33.265	6.122	34.446	-0.26%	-3.43%
			6665	6.22	33.014	6.265	34.302	-0.72%	-3.75%
			6675	6.247	32.992	6.273	34.29	-0.41%	-3.79%
			6715	6.312	32.955	6.319	34.242	-0.11%	-3.76%
			6785	6.386	32.776	6.4	34.158	-0.22%	-4.05%
			6825	6.46	32.739	6.447	34.11	0.20%	-4.02%
			6995	6.6	32.576	6.644	33.906	-0.66%	-3.92%
			7000	6.602	32.572	6.65	33.9	-0.72%	-3.92%
			7005	6.609	32.552	6.656	33.894	-0.71%	-3.96%
			7025	6.658	32.388	6.68	33.87	-0.33%	-4.38%

The above measured tissue parameters were used in the DASY software. The DASY software was used to perform interpolation to determine the dielectric parameters at the SAR test device frequencies (per KDB Publication 865664 D01v01r04 and IEEE 1528-2013 6.6.1.2). The tissue parameters listed in the SAR test plots may slightly differ from the table above due to significant digit rounding in the software.

FCC ID: A3LSMS916U	6 – 8 GHZ RF EXPOSURE EVALUATION	Approved by: Technical Manager
Document S/N: 1M2209010097-27.A3L	DUT Type: Portable Handset	Page 18 of 34

Prior to SAR assessment, the system is verified to $\pm 10\%$ of the SAR measurement on the reference dipole at the time of calibration by the calibration facility. Full system validation status and result summary can be found in SAR System Validation Appendix.

Table 10-2
System Verification Results

System Verification TARGET & MEASURED																				
SAR System #	Tissue Frequency (MHz)	Tissue Type	Date	Amb. Temp (°C)	Liquid Temp (°C)	Input Power (W)	Source SN	Probe SN	Measured SAR _{1g} (W/kg)	1 W Target SAR _{1g} (W/kg)	1 W Normalized SAR _{1g} (W/kg)	Deviation _{1g} (%)	Measured SAR _{10g} (W/kg)	1 W Target SAR _{10g} (W/kg)	1 W Normalized SAR _{10g} (W/kg)	Deviation _{10g} (%)	Measured 4cm ² APD (W/m ²)	1W Target 4cm ² APD (W/m ²)	1 W Normalized 4cm ² APD (W/m ²)	Deviation 4cm ² APD (%)
H	6500	Head	10/19/2022	23.5	22.1	0.025	1018	3914	7.130	290.000	285.200	-1.66%	1.300	53.200	52.000	-2.26%	31.7000	1310.0000	1268.000	-3.21%
H	8000	Head	10/19/2022	23.5	22.1	0.025	1007	3914	6.640	262.000	265.600	1.37%	1.080	44.100	43.200	-2.04%	26.7000	1090.0000	1068.000	-2.02%
H	6500	Head	10/26/2022	22.3	21.3	0.025	1018	3914	7.410	290.000	296.400	2.21%	1.360	53.200	54.400	2.26%	33.2000	1310.0000	1328.000	1.37%

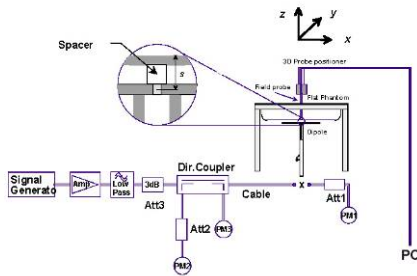


Figure 10-1
System Verification Setup Diagram



Figure 10-2
System Verification Setup Photo

FCC ID: A3LSMS916U	6 – 8 GHZ RF EXPOSURE EVALUATION	Approved by: Technical Manager
Document S/N: 1M2209010097-27.A3L	DUT Type: Portable Handset	Page 19 of 34

10.2 Power Density Test System Verification

The system was verified to be within ± 0.66 dB of the power density targets on the calibration certificate according to the test system specification in the user's manual and calibration facility recommendation. The 0.66 dB deviation threshold represents the expanded uncertainty for system performance checks using SPEAG's mmWave verification sources. The same spatial resolution and measurement region used in the source calibration was applied during the system check.

The measured power density distribution of verification source was also confirmed through visual inspection to have no noticeable differences, both spatially (shape) and numerically (level) from the distribution provided by the manufacturer, per November 2017 TCBC Workshop Notes.

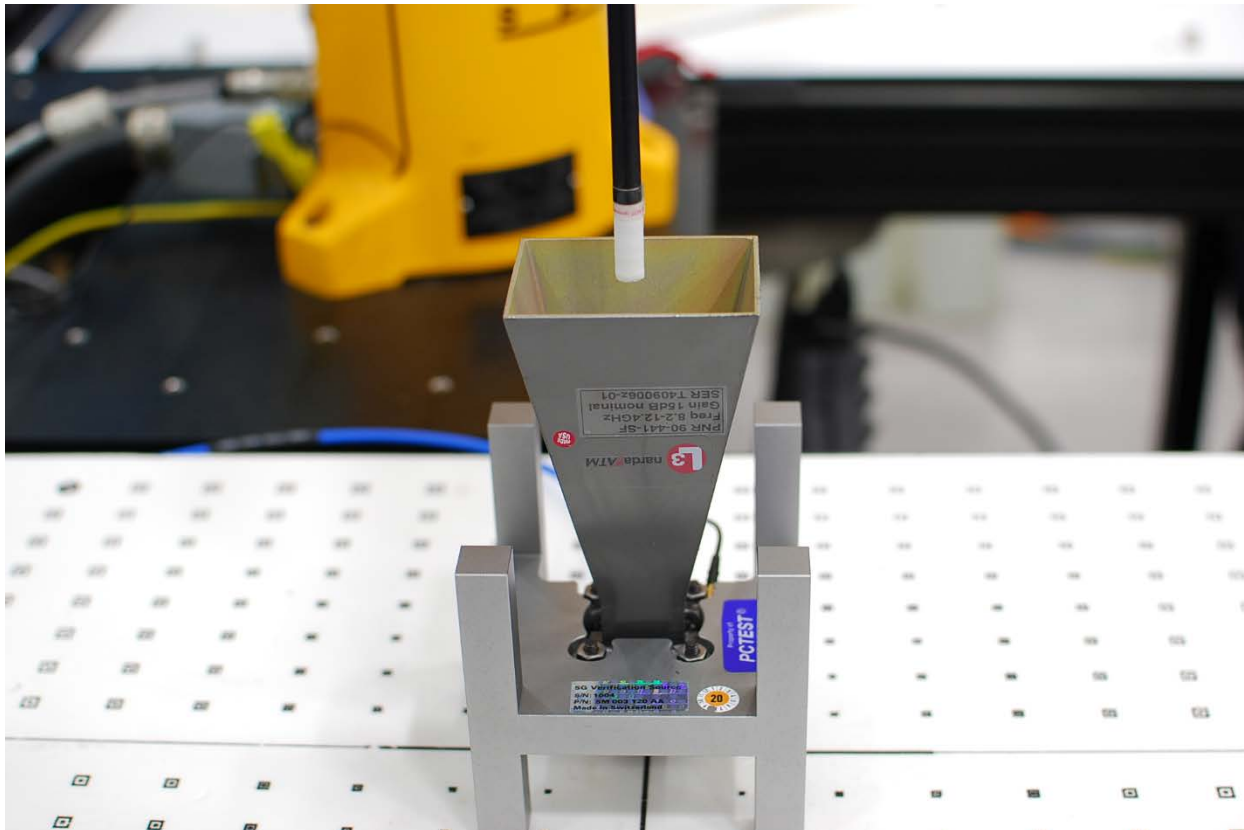


Figure 10-3
System Verification Setup Photo

<p>FCC ID: A3LSMS916U</p>	<p>6 – 8 GHZ RF EXPOSURE EVALUATION</p>	<p>Approved by: Technical Manager</p>
<p>Document S/N: 1M2209010097-27.A3L</p>	<p>DUT Type: Portable Handset</p>	<p>Page 20 of 34</p>

**Table 10-3
10 GHz Verifications**

System Verification											
System	Frequency (GHz)	Date	Source S/N	Probe S/N	Prad (mW)	Normal psPD (W/m ² over 4 cm ²)		Deviation (dB)	Total psPD (W/m ² over 4 cm ²)		Deviation (dB)
						Measured	Target		Measured	Target	
Q	10	10/05/2022	1004	9541	86.1	54.70	49.40	0.44	54.90	49.40	0.46
Q	10	10/11/2022	1004	9541	86.1	54.40	49.40	0.42	54.90	49.40	0.46
Q	10	10/17/2022	1004	9541	86.1	52.50	49.40	0.26	52.70	49.40	0.28

Note: A **10 mm distance spacing** was used from the reference horn antenna aperture to the probe element.

FCC ID: A3LSMS916U	6 – 8 GHZ RF EXPOSURE EVALUATION	Approved by: Technical Manager
Document S/N: 1M2209010097-27.A3L	DUT Type: Portable Handset	Page 21 of 34

11 DATA SUMMARY

11.1 SAR and Absorbed Power Density Results

**Table 11-1
6 GHz WLAN Head MIMO SAR**

MEASUREMENT RESULTS																				
FREQUENCY		Mode	Service	Bandwidth [MHz]	Maximum Allowed Power (Ant 1) [dBm]	Conducted Power (Ant 1) [dBm]	Maximum Allowed Power (Ant 2) [dBm]	Conducted Power (Ant 2) [dBm]	Power Drift [dB]	Side	Test Position	Antenna Config.	Device Serial Number	Data Rate (Mbps)	Duty Cycle (%)	SAR (1g)	Scaling Factor (Power)	Scaling Factor (Duty Cycle)	Reported SAR (1g)	Plot #
MHz	Ch.															(W/kg)			(W/kg)	
5985.00	7	802.11ax	OFDM	80	12.00	11.75	12.00	11.61	-0.06	Right	Cheek	MIMO	VJ31557M	68.1	99.65	0.140	1.094	1.004	0.154	
6305.00	71	802.11ax	OFDM	80	12.00	11.78	12.00	11.60	-0.06	Right	Cheek	MIMO	VJ31557M	68.1	99.65	0.211	1.096	1.004	0.232	A1
6545.00	119	802.11ax	OFDM	80	12.00	11.82	12.00	11.64	-0.12	Right	Cheek	MIMO	VJ31557M	68.1	99.65	0.138	1.086	1.004	0.150	
6785.00	167	802.11ax	OFDM	80	12.00	11.99	12.00	11.48	-0.04	Right	Cheek	MIMO	VJ31557M	68.1	99.65	0.140	1.127	1.004	0.158	
7025.00	215	802.11ax	OFDM	80	12.00	11.99	12.00	11.24	-0.07	Right	Cheek	MIMO	VJ31557M	68.1	99.65	0.153	1.191	1.004	0.183	
6785.00	167	802.11ax	OFDM	80	12.00	11.99	12.00	11.48	-0.04	Right	Tilt	MIMO	VJ31557M	68.1	99.65	0.059	1.127	1.004	0.067	
6785.00	167	802.11ax	OFDM	80	12.00	11.99	12.00	11.48	-0.02	Left	Cheek	MIMO	VJ31557M	68.1	99.65	0.038	1.127	1.004	0.043	
6785.00	167	802.11ax	OFDM	80	12.00	11.99	12.00	11.48	0.07	Left	Tilt	MIMO	VJ31557M	68.1	99.65	0.039	1.127	1.004	0.044	
ANSI / IEEE C95.1 1992 - SAFETY LIMIT Spatial Peak Uncontrolled Exposure/General Population										Head 1.6 W/kg (mW/g) averaged over 1 gram										

Note: To achieve the 15 dBm maximum allowed MIMO power shown in the documentation, each antenna transmits at a maximum allowed power of 12 dBm.

**Table 11-2
6 GHz WLAN Body-worn MIMO SAR**

MEASUREMENT RESULTS																				
FREQUENCY		Mode	Service	Bandwidth [MHz]	Maximum Allowed Power (Ant 1) [dBm]	Conducted Power (Ant 1) [dBm]	Maximum Allowed Power (Ant 2) [dBm]	Conducted Power (Ant 2) [dBm]	Power Drift [dB]	Spacing (mm)	Antenna Config.	Device Serial Number	Data Rate (Mbps)	Side	Duty Cycle (%)	SAR (1g)	Scaling Factor (Power)	Scaling Factor (Duty Cycle)	Reported SAR (1g)	Plot #
MHz	Ch.															(W/kg)			(W/kg)	
6785.00	167	802.11ax	OFDM	80	12.00	11.99	12.00	11.48	-0.09	15	MIMO	VJ31557M	68.1	Back	99.65	0.046	1.127	1.004	0.051	A2
ANSI / IEEE C95.1 1992 - SAFETY LIMIT Spatial Peak Uncontrolled Exposure/General Population										Body 1.6 W/kg (mW/g) averaged over 1 gram										

Note: To achieve the 15 dBm maximum allowed MIMO power shown in the documentation, each antenna transmits at a maximum allowed power of 12 dBm.

**Table 11-3
6 GHz WLAN Phablet MIMO SAR**

MEASUREMENT RESULTS																				
FREQUENCY		Mode	Service	Bandwidth [MHz]	Maximum Allowed Power (Ant 1) [dBm]	Conducted Power (Ant 1) [dBm]	Maximum Allowed Power (Ant 2) [dBm]	Conducted Power (Ant 2) [dBm]	Power Drift [dB]	Spacing (mm)	Antenna Config.	Device Serial Number	Data Rate (Mbps)	Side	Duty Cycle (%)	SAR (10g)	Scaling Factor (Power)	Scaling Factor (Duty Cycle)	Reported SAR (10g)	Plot #
MHz	Ch.															(W/kg)			(W/kg)	
6785.00	167	802.11ax	OFDM	80	12.00	11.99	12.00	11.48	0.08	0	MIMO	VJ31557M	68.1	Back	99.65	0.168	1.127	1.004	0.190	
6785.00	167	802.11ax	OFDM	80	12.00	11.99	12.00	11.48	-0.07	0	MIMO	VJ31557M	68.1	Front	99.65	0.112	1.127	1.004	0.127	
6785.00	167	802.11ax	OFDM	80	12.00	11.99	12.00	11.48	0.00	0	MIMO	VJ31557M	68.1	Top	99.65	0.044	1.127	1.004	0.050	
6785.00	167	802.11ax	OFDM	80	12.00	11.99	12.00	11.48	-0.03	0	MIMO	VJ31557M	68.1	Right	99.65	0.000	1.127	1.004	0.000	
5985.00	7	802.11ax	OFDM	80	12.00	11.75	12.00	11.61	-0.01	0	MIMO	VJ31557M	68.1	Left	99.65	0.473	1.094	1.004	0.520	
6305.00	71	802.11ax	OFDM	80	12.00	11.78	12.00	11.60	0.00	0	MIMO	VJ31557M	68.1	Left	99.65	0.522	1.096	1.004	0.574	A3
6545.00	119	802.11ax	OFDM	80	12.00	11.82	12.00	11.64	0.02	0	MIMO	VJ31557M	68.1	Left	99.65	0.300	1.086	1.004	0.327	
6785.00	167	802.11ax	OFDM	80	12.00	11.99	12.00	11.48	-0.02	0	MIMO	VJ31557M	68.1	Left	99.65	0.234	1.127	1.004	0.265	
7025.00	215	802.11ax	OFDM	80	12.00	11.99	12.00	11.24	-0.02	0	MIMO	VJ31557M	68.1	Left	99.65	0.257	1.191	1.004	0.307	
ANSI / IEEE C95.1 1992 - SAFETY LIMIT Spatial Peak Uncontrolled Exposure/General Population										Phablet 4 W/kg (mW/g) averaged over 10 gram										

Note: To achieve the 15 dBm maximum allowed MIMO power shown in the documentation, each antenna transmits at a maximum allowed power of 12 dBm.

FCC ID: A3LSMS916U	6 – 8 GHZ RF EXPOSURE EVALUATION	Approved by: Technical Manager
Document S/N: 1M2209010097-27.A3L	DUT Type: Portable Handset	Page 22 of 34

**Table 11-4
UWB Phablet SISO SAR**

MEASUREMENT RESULTS										
FREQUENCY		Mode	Power Drift [dB]	Spacing (mm)	Antenna Config.	Device Serial Number	Side	Duty Cycle (%)	SAR (10g)	Plot #
MHz	Ch.								(W/kg)	
6489.60	5	CW	0.05	0	1	VJ2657M	Back	0.0	0.001	
6489.60	5	CW	0.03	0	1	VJ2657M	Front	0.0	0.000	
6489.60	5	CW	0.09	0	1	VJ2657M	Top	0.0	0.000	
6489.60	5	CW	-0.10	0	1	VJ2657M	Left	0.0	0.001	
7987.20	9	CW	-0.04	0	1	VJ2657M	Back	0.0	0.002	A4
7987.20	9	CW	-0.02	0	1	VJ2657M	Front	0.0	0.001	
7987.20	9	CW	0.08	0	1	VJ2657M	Top	0.0	0.000	
7987.20	9	CW	0.10	0	1	VJ2657M	Left	0.0	0.000	
6489.60	5	CW	0.02	0	2	VJ2657M	Back	0.0	0.002	
6489.60	5	CW	-0.07	0	2	VJ2657M	Front	0.0	0.000	
7987.20	9	CW	-0.08	0	2	VJ2657M	Back	0.0	0.000	
7987.20	9	CW	-0.07	0	2	VJ2657M	Front	0.0	0.000	
ANSI / IEEE C95.1 1992 - SAFETY LIMIT					Phablet					
Spatial Peak					4 W/kg (mW/g)					
Uncontrolled Exposure/General Population					averaged over 10 gram					

**Table 11-5
6 GHz WLAN Head MIMO Absorbed Power Density**

MEASUREMENT RESULTS																				
FREQUENCY		Mode	Service	Bandwidth [MHz]	Maximum Allowed Power (Ant 1) [dBm]	Conducted Power (Ant 1) [dBm]	Maximum Allowed Power (Ant 2) [dBm]	Conducted Power (Ant 2) [dBm]	Power Drift [dB]	Side	Test Position	Antenna Config.	Device Serial Number	Data Rate (Mbps)	Duty Cycle (%)	Measured APD W/m ² (4cm ²)	Scaling Factor (Power)	Scaling Factor (Duty Cycle)	Scaled APD W/m ² (4cm ²)	Plot #
MHz	Ch.																			
5985.00	7	802.11ax	OFDM	80	12.00	11.75	12.00	11.61	-0.06	Right	Cheek	MIMO	VJ31557M	68.1	99.65	0.798	1.094	1.004	0.877	
6305.00	71	802.11ax	OFDM	80	12.00	11.78	12.00	11.60	-0.06	Right	Cheek	MIMO	VJ31557M	68.1	99.65	1.350	1.096	1.004	1.486	A1
6545.00	119	802.11ax	OFDM	80	12.00	11.82	12.00	11.64	-0.12	Right	Cheek	MIMO	VJ31557M	68.1	99.65	0.830	1.086	1.004	0.905	
6785.00	167	802.11ax	OFDM	80	12.00	11.99	12.00	11.48	-0.04	Right	Cheek	MIMO	VJ31557M	68.1	99.65	0.774	1.127	1.004	0.876	
7025.00	215	802.11ax	OFDM	80	12.00	11.99	12.00	11.24	-0.07	Right	Cheek	MIMO	VJ31557M	68.1	99.65	0.878	1.191	1.004	1.050	
6785.00	167	802.11ax	OFDM	80	12.00	11.99	12.00	11.48	-0.04	Right	Tilt	MIMO	VJ31557M	68.1	99.65	0.306	1.127	1.004	0.346	
6785.00	167	802.11ax	OFDM	80	12.00	11.99	12.00	11.48	-0.02	Left	Cheek	MIMO	VJ31557M	68.1	99.65	0.248	1.127	1.004	0.281	
6785.00	167	802.11ax	OFDM	80	12.00	11.99	12.00	11.48	0.07	Left	Tilt	MIMO	VJ31557M	68.1	99.65	0.238	1.127	1.004	0.269	

Note: To achieve the 14 dBm maximum allowed MIMO power shown in the documentation, each antenna transmits at a maximum allowed power of 11 dBm.

**Table 11-6
6 GHz WLAN Body-worn MIMO Absorbed Power Density**

MEASUREMENT RESULTS																				
FREQUENCY		Mode	Service	Bandwidth [MHz]	Maximum Allowed Power (Ant 1) [dBm]	Conducted Power (Ant 1) [dBm]	Maximum Allowed Power (Ant 2) [dBm]	Conducted Power (Ant 2) [dBm]	Power Drift [dB]	Spacing (mm)	Antenna Config.	Device Serial Number	Data Rate (Mbps)	Side	Duty Cycle (%)	Measured APD W/m ² (4cm ²)	Scaling Factor (Power)	Scaling Factor (Duty Cycle)	Scaled APD W/m ² (4cm ²)	Plot #
MHz	Ch.																			
6785.00	167	802.11ax	OFDM	80	12.00	11.99	12.00	11.48	-0.09	15	MIMO	VJ31557M	68.1	Back	99.65	0.360	1.127	1.004	0.407	A2

Note: To achieve the 15 dBm maximum allowed MIMO power shown in the documentation, each antenna transmits at a maximum allowed power of 12 dBm.

FCC ID: A3LSMS916U	6 – 8 GHZ RF EXPOSURE EVALUATION	Approved by: Technical Manager
Document S/N: 1M2209010097-27.A3L	DUT Type: Portable Handset	Page 23 of 34

**Table 11-7
6 GHz WLAN Phablet MIMO Absorbed Power Density**

MEASUREMENT RESULTS																				
FREQUENCY		Mode	Service	Bandwidth [MHz]	Maximum Allowed Power (Ant 1) [dBm]	Conducted Power (Ant 1) [dBm]	Maximum Allowed Power (Ant 2) [dBm]	Conducted Power (Ant 2) [dBm]	Power Drift [dB]	Spacing (mm)	Antenna Config.	Device Serial Number	Data Rate (Mbps)	Side	Duty Cycle (%)	Measured APD	Scaling Factor (Power)	Scaling Factor (Duty Cycle)	Scaled APD	Plot #
MHz	Ch.															W/m ² (4cm ²)			W/m ² (4cm ²)	
6785.00	167	802.11ax	OFDM	80	12.00	11.99	12.00	11.48	0.08	0	MIMO	VJ31557M	68.1	Back	99.65	3.920	1.127	1.004	4.436	
6785.00	167	802.11ax	OFDM	80	12.00	11.99	12.00	11.48	-0.07	0	MIMO	VJ31557M	68.1	Front	99.65	2.680	1.127	1.004	3.032	
6785.00	167	802.11ax	OFDM	80	12.00	11.99	12.00	11.48	0.00	0	MIMO	VJ31557M	68.1	Top	99.65	1.050	1.127	1.004	1.188	
6785.00	167	802.11ax	OFDM	80	12.00	11.99	12.00	11.48	-0.03	0	MIMO	VJ31557M	68.1	Right	99.65	0.003	1.127	1.004	0.003	
5985.00	7	802.11ax	OFDM	80	12.00	11.75	12.00	11.61	-0.01	0	MIMO	VJ31557M	68.1	Left	99.65	11.500	1.094	1.004	12.631	
6305.00	71	802.11ax	OFDM	80	12.00	11.78	12.00	11.60	0.00	0	MIMO	VJ31557M	68.1	Left	99.65	12.700	1.096	1.004	13.975	A3
6545.00	119	802.11ax	OFDM	80	12.00	11.82	12.00	11.64	0.02	0	MIMO	VJ31557M	68.1	Left	99.65	7.260	1.086	1.004	7.916	
6785.00	167	802.11ax	OFDM	80	12.00	11.99	12.00	11.48	-0.02	0	MIMO	VJ31557M	68.1	Left	99.65	5.710	1.127	1.004	6.461	
7025.00	215	802.11ax	OFDM	80	12.00	11.99	12.00	11.24	-0.02	0	MIMO	VJ31557M	68.1	Left	99.65	6.230	1.191	1.004	7.450	

Note: To achieve the 15 dBm maximum allowed MIMO power shown in the documentation, each antenna transmits at a maximum allowed power of 12 dBm.

**Table 11-8
UWB Phablet SISO Absorbed Power Density**

MEASUREMENT RESULTS										
FREQUENCY		Mode	Service	Power Drift [dB]	Spacing (mm)	Antenna Config.	Device Serial Number	Side	Measured APD	Plot #
MHz	Ch.								W/m ² (4cm ²)	
6489.60	5	CW	CW	0.05	0	1	VJ2657M	Back	0.028	
6489.60	5	CW	CW	0.03	0	1	VJ2657M	Front	0.007	
6489.60	5	CW	CW	0.09	0	1	VJ2657M	Top	0.016	
6489.60	5	CW	CW	-0.10	0	1	VJ2657M	Left	0.026	
7987.20	9	CW	CW	-0.04	0	1	VJ2657M	Back	0.045	A4
7987.20	9	CW	CW	-0.02	0	1	VJ2657M	Front	0.024	
7987.20	9	CW	CW	0.08	0	1	VJ2657M	Top	0.002	
7987.20	9	CW	CW	0.10	0	1	VJ2657M	Left	0.012	
6489.60	5	CW	CW	0.02	0	2	VJ2657M	Back	0.041	
6489.60	5	CW	CW	-0.07	0	2	VJ2657M	Front	0.000	
7987.20	9	CW	CW	-0.08	0	2	VJ2657M	Back	0.020	
7987.20	9	CW	CW	-0.07	0	2	VJ2657M	Front	0.005	

FCC ID: A3LSMS916U	6 – 8 GHZ RF EXPOSURE EVALUATION	Approved by: Technical Manager
Document S/N: 1M2209010097-27.A3L	DUT Type: Portable Handset	Page 24 of 34

SAR and Absorbed Power Density General Notes:

1. The test data reported are the worst-case SAR values according to test procedures specified in IEEE 1528-2013, and FCC KDB Publication 447498 D04v01.
2. Batteries are fully charged at the beginning of the SAR measurements.
3. Liquid tissue depth was at least 15.0 cm for all frequencies.
4. The manufacturer has confirmed that the device(s) tested have the same physical, mechanical and thermal characteristics and are within operational tolerances expected for production units.
5. SAR results were scaled to the maximum allowed power to demonstrate compliance per FCC KDB Publication 447498 D04v01.
6. The device was tested using a fixed spacing for body-worn accessory testing. A separation distance of 15 was considered because the manufacturer has determined that there will be body-worn accessories available in the marketplace for users to support this separation distance.
7. Per FCC KDB Publication 648474 D04v01r03, body-worn SAR was evaluated without a headset connected to the device. Since the standalone reported body-worn SAR was ≤ 1.2 W/kg, no additional body-worn SAR evaluations using a headset cable were required.
8. Per FCC KDB Publication 648474 D04v01r03, this device is considered a "phablet" since the diagonal dimension is > 160 mm and < 200 mm. Therefore, phablet SAR tests are required when wireless router mode does not apply or if wireless router $1g$ SAR > 1.2 W/kg.
9. Unless otherwise noted, when $10g$ SAR measurement is considered, a factor of 2.5 is applied to the thresholds below.
10. Per October 2020 TCB Workshop notes, absorbed power density (APD) using a $4cm^2$ averaging area is reported based on SAR measurements.
11. Per FCC KDB Publication 865664 D01v01r04, variability SAR tests were not required since measured SAR results for all frequency bands were less than 0.8 W/kg for $1g$ SAR and less than 2.0 W/kg for $10g$ SAR.

WLAN Notes:

1. Per KDB Publication 248227 D01v02r02, SAR for MIMO was evaluated by following the simultaneous SAR provisions from KDB Publication 447498 D04v01 by making a SAR measurement with both antennas transmitting simultaneously.
2. When the maximum reported $1g$ averaged SAR is ≤ 0.8 W/kg, SAR testing on additional channels was not required. Otherwise, SAR for the next highest output power channel was required until the reported SAR result was ≤ 1.20 W/kg for $1g$ evaluations or all test channels were measured.
3. The device was configured to transmit continuously at the required data rate, channel bandwidth and signal modulation, using the highest transmission duty factor supported by the test mode tools. The reported SAR was scaled to the 100% transmission duty factor to determine compliance. Procedures used to measure the duty factor are identical to that in the associated EMC test reports.
4. Per FCC guidance, SAR was performed using 6.5 GHz SAR probe calibration factors. Per October 2020 TCB Workshop notes, 5 channels were tested

UWB Notes:

1. UWB was evaluated for phablet based on expected usage conditions.

FCC ID: A3LSMS916U	6 – 8 GHZ RF EXPOSURE EVALUATION	Approved by: Technical Manager
Document S/N: 1M2209010097-27.A3L	DUT Type: Portable Handset	Page 25 of 34

11.2 Power Density Results

**Table 11-9
6 GHz WLAN Power Density**

MEASUREMENT RESULTS																									
Frequency (MHz)	Channel	Mode	Service	Bandwidth (MHz)	Maximum Allowed Power (Ant 1) (dBm)	Conducted Power (Ant 1) (dBm)	Maximum Allowed Power (Ant 2) (dBm)	Conducted Power (Ant 2) (dBm)	Power Drift (dB)	Spacing (mm)	Antenna Config.	DUT Serial Number	Data Rate (Mbps)	Side	Duty Cycle (%)	Grid Step (λ)	IPD (W/m ²)	Scaling Factor for Measurement Uncertainty per IEC 62479	Scaling Factor (Power)	Scaling Factor (Duty Cycle)	Normal psPD (W/m ²)	Scaled Normal psPD (W/m ²)	Total psPD (W/m ²)	Scaled Total psPD (W/m ²)	Plot #
6785.00	167	802.11ax	OFDM	80	12.00	11.99	12.00	11.48	0.08	2	MMMO	VIJ2657M	68.1	Back	99.65	0.125	-	1.554	1.127	1.004	1.200	2.110	1.980	2.444	
6785.00	167	802.11ax	OFDM	80	12.00	11.99	12.00	11.48	-0.03	2	MMMO	VIJ2657M	68.1	Front	99.65	0.125	-	1.554	1.127	1.004	0.712	1.252	1.070	1.881	
6785.00	167	802.11ax	OFDM	80	12.00	11.99	12.00	11.48	0.20	2	MMMO	VIJ2657M	68.1	Top	99.65	0.125	-	1.554	1.127	1.004	0.320	0.563	0.403	0.709	
6785.00	167	802.11ax	OFDM	80	12.00	11.99	12.00	11.48	-0.06	2	MMMO	VIJ2657M	68.1	Right	99.65	0.125	-	1.554	1.127	1.004	0.195	0.343	0.227	0.399	
5985.00	7	802.11ax	OFDM	80	12.00	11.75	12.00	11.61	0.04	2	MMMO	VIJ2657M	68.1	Left	99.65	0.125	-	1.554	1.094	1.004	1.580	2.687	2.020	3.448	
6305.00	71	802.11ax	OFDM	80	12.00	11.78	12.00	11.60	-0.05	2	MMMO	VIJ2657M	68.1	Left	99.65	0.125	-	1.554	1.096	1.004	2.100	3.591	2.860	4.873	
6545.00	119	802.11ax	OFDM	80	12.00	11.82	12.00	11.64	0.15	2	MMMO	VIJ2657M	68.1	Left	99.65	0.125	-	1.554	1.088	1.004	1.650	2.798	2.980	5.040	A5
6785.00	167	802.11ax	OFDM	80	12.00	11.99	12.00	11.48	-0.04	2	MMMO	VIJ2657M	68.1	Left	99.65	0.125	1.270	1.554	1.127	1.004	1.670	2.938	2.360	4.132	
6785.00	167	802.11ax	OFDM	80	12.00	11.99	12.00	11.48	0.19	8.84	MMMO	VIJ2657M	68.1	Left	99.65	0.125	0.940	1.554	1.127	1.004	1.010	1.778	1.100	1.934	
7025.00	215	802.11ax	OFDM	80	12.00	11.99	12.00	11.24	0.06	2	MMMO	VIJ2657M	68.1	Left	99.65	0.125	-	1.554	1.191	1.004	1.490	2.769	2.090	3.828	
47 CFR §1.1310 - SAFETY LIMIT Spatial Average Uncontrolled Exposure / General Population												Power Density 10 W/m ² averaged over 4 cm ²													

**Table 11-10
UWB Power Density**

MEASUREMENT RESULTS															
Frequency (MHz)	Channel	Mode	Power Drift (dB)	Spacing (mm)	Antenna Config.	DUT Serial Number	Side	Grid Step (λ)	IPD (W/m ²)	Scaling Factor for Measurement Uncertainty per IEC 62479	Normal psPD (W/m ²)	Scaled Normal psPD (W/m ²)	Total psPD (W/m ²)	Scaled Total psPD (W/m ²)	Plot #
6489.60	5	CW	0.00	2	1	VIJ2657M	Back	0.125	-	1.554	0.083	0.129	0.089	0.138	
6489.60	5	CW	0.07	2	1	VIJ2657M	Front	0.125	-	1.554	0.036	0.056	0.041	0.064	
6489.60	5	CW	0.10	2	1	VIJ2657M	Top	0.125	-	1.554	0.115	0.179	0.132	0.205	
6489.60	5	CW	0.07	2	1	VIJ2657M	Left	0.125	-	1.554	0.017	0.026	0.018	0.028	
7987.20	9	CW	0.10	2	1	VIJ2657M	Back	0.125	-	1.554	0.189	0.294	0.205	0.319	A6
7987.20	9	CW	-0.10	2	1	VIJ2657M	Front	0.125	-	1.554	0.127	0.197	0.156	0.242	
7987.20	9	CW	0.10	2	1	VIJ2657M	Top	0.125	-	1.554	0.071	0.110	0.078	0.121	
7987.20	9	CW	-0.20	2	1	VIJ2657M	Left	0.125	-	1.554	0.159	0.247	0.181	0.281	
6489.60	5	CW	0.00	2	2	VIJ2657M	Back	0.125	-	1.554	0.079	0.123	0.101	0.157	
6489.60	5	CW	0.20	2	2	VIJ2657M	Front	0.125	-	1.554	0.177	0.275	0.190	0.295	
7987.20	9	CW	0.11	2	2	VIJ2657M	Back	0.125	0.262	1.554	0.084	0.131	0.086	0.134	
7987.20	9	CW	0.10	7.51	2	VIJ2657M	Back	0.125	0.253	1.554	0.059	0.092	0.065	0.101	
7987.20	9	CW	-0.02	2	2	VIJ2657M	Front	0.125	-	1.554	0.051	0.079	0.084	0.131	
47 CFR §1.1310 - SAFETY LIMIT Spatial Average Uncontrolled Exposure / General Population							Power Density 10 W/m ² averaged over 4 cm ²								

FCC ID: A3LSMS916U	6 – 8 GHZ RF EXPOSURE EVALUATION		Approved by: Technical Manager
Document S/N: 1M2209010097-27.A3L	DUT Type: Portable Handset	Page 26 of 34	

Power Density General Notes

1. The manufacturer has confirmed that the devices tested have the same physical, mechanical and thermal characteristics and are within operational tolerances expected for production units.
2. Batteries are fully charged at the beginning of the measurements. The DUT was connected to a wall charger for some measurements due to the test duration. It was confirmed that the charger plugged into this DUT did not impact the near-field PD test results.
3. Power density was calculated by repeated E-field measurements on two measurement planes separated by $\lambda/4$.
4. The device was configured to transmit continuously at the required data rate, channel bandwidth and signal modulation, using the highest transmission duty factor supported by the test mode tools.
5. Per FCC guidance and equipment manufacturer guidance, power density results were scaled according to IEC 62479:2010 for the portion of the measurement uncertainty > 30%. Total expanded uncertainty of 2.68 dB (85.4%) was used to determine the psPD measurement scaling factor.
6. Per equipment manufacturer guidance, power density was measured at $d=2\text{mm}$ and $d=\lambda/5\text{mm}$ using the same grid size and grid step size for some frequencies and surfaces. The integrated Power Density (iPD) was calculated based on these measurements. Since iPD ratio between the two distances is $\geq -1\text{dB}$, the grid step was sufficient for determining compliance at $d=2\text{mm}$.
7. psPD for MIMO was evaluated by making a measurement with both antennas transmitting simultaneously.

FCC ID: A3LSMS916U	6 – 8 GHZ RF EXPOSURE EVALUATION	Approved by: Technical Manager
Document S/N: 1M2209010097-27.A3L	DUT Type: Portable Handset	Page 27 of 34

12 EQUIPMENT LIST

Manufacturer	Model	Description	Cal Date	Cal Interval	Cal Due	Serial Number
-	WL25-1	Conducted Cable Set (25GHz)	12/19/2021	Annual	12/19/2022	WL25-1
Agilent	N9038A	MXE EMI Receiver	N/A	N/A	N/A	MY51210133
Rohde & Schwarz	FSW67	Signal / Spectrum Analyzer	N/A	N/A	N/A	103200
Sunol	JB5	Bi-Log Antenna (30M - 5GHz)	N/A	N/A	N/A	A051107
Emco	3115	Horn Antenna (1-18GHz)	N/A	N/A	N/A	9704-5182
Amplifier Research	15S1G6	Amplifier	CBT	N/A	CBT	433975
Keysight Technologies	N9030A	3Hz-44GHz PXA Signal Analyzer	8/18/2022	Annual	8/18/2023	MY49430494
SPEAG	EUmmWV3	EUmmWV3 Probe	5/19/2022	Annual	5/19/2023	9541
SPEAG	SM 003 100 AA	10 GHz System Verification Antenna	8/17/2022	Annual	8/17/2023	1004
SPEAG	DAE4ip	Dasy Data Acquisition Electronics	1/21/2022	Annual	1/21/2023	1639
SPEAG	EX3DV4	SAR Probe	5/17/2022	Annual	5/17/2023	3914
SPEAG	DAE4	Dasy Data Acquisition Electronics	5/10/2022	Annual	5/10/2023	728
SPEAG	D6.5GHzV2	6.5GHz SAR Dipole	12/13/2021	Annual	12/13/2022	1018
SPEAG	D6.5GHzV2	8GHz SAR Dipole	5/17/2022	Annual	5/17/2023	1007
Control Company	4352	Long Stem Thermometer	9/10/2021	Biennial	9/10/2023	210774678
Control Company	4040	Therm./Clock/Humidity Monitor	3/12/2021	Biennial	3/12/2023	210202100
Agilent	SMF100A	Signal Generator	3/28/2022	Biennial	3/28/2024	101590
SPEAG	DAK-3.5	Dielectric Assessment Kit	8/15/2022	Annual	8/15/2023	1041
Mitutoyo	500-196-30	CD-6"ASX 6Inch Digital Caliper	2/16/2022	Triennial	2/16/2025	A20238413
Anritsu	MS2038C	20 GHz Vector Network Analyzer	2/18/2022	Annual	2/18/2023	1214109
MCL	BW-N6W5+	6dB Attenuator	CBT	N/A	CBT	1139
Narda	BW-S3W2	Attenuator (3dB)	CBT	N/A	CBT	120
MiniCircuits	VLF-6000+	Low Pass Filter	CBT	N/A	CBT	N/A
MiniCircuits	ZUDC10-83-S+	Directional Coupler	CBT	N/A	CBT	2050
Pasternack	PE5011-1	Torque Wrench	12/21/2021	Biennial	12/21/2023	82475
Anritsu	MA2411B	Pulse Power Sensor	3/2/2022	Annual	3/2/2023	1126066
Anritsu	MA2411B	Pulse Power Sensor	4/29/2022	Annual	4/29/2023	1207470
SPEAG	MAIA	Modulation and Audio Interference Analyzer	N/A	N/A	N/A	1520
Pasternack	PE87FL1017	Low Pass Filter	CBT	N/A	CBT	N/A

Note:

1. Each equipment item was used solely within its respective calibration period.
2. CBT (Calibrated Before Testing). Prior to testing, the measurement paths containing a cable, amplifier, attenuator, coupler or filter were connected to a calibrated source (i.e. a signal generator) to determine the losses of the measurement path. The power meter offset was then adjusted to compensate for the measurement system losses. This level offset is stored within the power meter before measurements are made. This calibration verification procedure applies to the system verification and output power measurements. The calibrated reading is then taken directly from the power meter after compensation of the losses for all final power measurements.

FCC ID: A3LSMS916U	6 – 8 GHZ RF EXPOSURE EVALUATION	Approved by: Technical Manager
Document S/N: 1M2209010097-27.A3L	DUT Type: Portable Handset	Page 28 of 34

13 MEASUREMENT UNCERTAINTIES

Applicable for SAR measurements:

a	b	c	d	e= f(d,k)	f	g	h = c x f/e	i = c x g/e	k
Uncertainty Component	IEEE 1528 Sec.	Tol. (± %)	Prob. Dist.	Div.	c _i 1gm	c _i 10 gms	1gm u _i (± %)	10gms u _i (± %)	v _i
Measurement System									
Probe Calibration	E.2.1	9.3	N	1	1	1	9.3	9.3	∞
Axial Isotropy	E.2.2	0.25	N	1	0.7	0.7	0.2	0.2	∞
Hemishperical Isotropy	E.2.2	1.3	N	1	0.7	0.7	0.9	0.9	∞
Boundary Effect	E.2.3	2	R	1.732	1	1	1.2	1.2	∞
Linearity	E.2.4	0.3	N	1	1	1	0.3	0.3	∞
System Detection Limits	E.2.4	0.25	R	1.732	1	1	0.1	0.1	∞
Modulation Response	E.2.5	4.8	R	1.732	1	1	2.8	2.8	∞
Readout Electronics	E.2.6	0.3	N	1	1	1	0.3	0.3	∞
Response Time	E.2.7	0.8	R	1.732	1	1	0.5	0.5	∞
Integration Time	E.2.8	2.6	R	1.732	1	1	1.5	1.5	∞
RF Ambient Conditions - Noise	E.6.1	3	R	1.732	1	1	1.7	1.7	∞
RF Ambient Conditions - Reflections	E.6.1	3	R	1.732	1	1	1.7	1.7	∞
Probe Positioner Mechanical Tolerance	E.6.2	0.8	R	1.732	1	1	0.5	0.5	∞
Probe Positioning w/ respect to Phantom	E.6.3	6.7	R	1.732	1	1	3.9	3.9	∞
Extrapolation, Interpolation & Integration algorithms for Max. SAR Evaluation	E.5	4	R	1.732	1	1	2.3	2.3	∞
Test Sample Related									
Test Sample Positioning	E.4.2	3.12	N	1	1	1	3.1	3.1	35
Device Holder Uncertainty	E.4.1	1.67	N	1	1	1	1.7	1.7	5
Output Power Variation - SAR drift measurement	E.2.9	5	R	1.732	1	1	2.9	2.9	∞
SAR Scaling	E.6.5	0	R	1.732	1	1	0.0	0.0	∞
Phantom & Tissue Parameters									
Phantom Uncertainty (Shape & Thickness tolerances)	E.3.1	7.6	R	1.73	1.0	1.0	4.4	4.4	∞
Liquid Conductivity - measurement uncertainty	E.3.3	4.3	N	1	0.78	0.71	3.3	3.0	76
Liquid Permittivity - measurement uncertainty	E.3.3	4.2	N	1	0.23	0.26	1.0	1.1	75
Liquid Conductivity - Temperature Uncertainty	E.3.4	3.4	R	1.732	0.78	0.71	1.5	1.4	∞
Liquid Permittivity - Temperature Uncertainty	E.3.4	0.6	R	1.732	0.23	0.26	0.1	0.1	∞
Liquid Conductivity - deviation from target values	E.3.2	5.0	R	1.73	0.64	0.43	1.8	1.2	∞
Liquid Permittivity - deviation from target values	E.3.2	5.0	R	1.73	0.60	0.49	1.7	1.4	∞
Combined Standard Uncertainty (k=1)	RSS						13.8	13.6	191
Expanded Uncertainty (95% CONFIDENCE LEVEL)	k=2						27.6	27.1	

FCC ID: A3LSMS916U	6 – 8 GHZ RF EXPOSURE EVALUATION	Approved by: Technical Manager
Document S/N: 1M2209010097-27.A3L	DUT Type: Portable Handset	Page 29 of 34

Applicable for Power Density Measurements:

a	b	c	d	e	f = c x f/e	g
Uncertainty Component	Unc. (± dB)	Prob. Dist.	Div.	c _i	u _i (± dB)	v _i
Measurement System						
Calibration	0.49	N	1	1	0.49	∞
Probe Correction	0.00	R	1.73	1	0.00	∞
Frequency Response	0.20	R	1.73	1	0.12	∞
Sensor Cross Coupling	0.00	R	1.73	1	0.00	∞
Isotropy	0.50	R	1.73	1	0.29	∞
Linearity	0.20	R	1.73	1	0.12	∞
Probe Scattering	0.00	R	1.73	1	0.00	∞
Probe Positioning offset	0.30	R	1.73	1	0.17	∞
Probe Positioning Repeatability	0.04	R	1.73	1	0.02	∞
Sensor Mechanical Offset	0.00	R	1.73	1	0.00	∞
Probe Spatial Resolution	0.00	R	1.73	1	0.00	∞
Field Impedance Dependence	0.00	R	1.73	1	0.00	∞
Amplitude and Phase Drift	0.00	R	1.73	1	0.00	∞
Amplitude and Phase Noise	0.04	R	1.73	1	0.02	∞
Measurement Area Truncation	0.00	R	1.73	1	0.00	∞
Data Acquisition	0.03	N	1	1	0.03	∞
Sampling	0.00	R	1.73	1	0.00	∞
Field Reconstruction	2.00	R	1.73	1	1.15	∞
Forward Transformation	0.00	R	1.73	1	0.00	∞
Power Density Scaling	0.00	R	1.73	1	0.00	∞
Spatial Averaging	0.10	R	1.73	1	0.06	∞
System Detection Limit	0.04	R	1.73	1	0.02	∞
Test Sample Related						
Probe Coupling with DUT	0.00	R	1.73	1	0.00	∞
Modulation Response	0.40	R	1.73	1	0.23	∞
Integration Time	0.00	R	1.73	1	0.00	∞
Response Time	0.00	R	1.73	1	0.00	∞
Device Holder Influence	0.10	R	1.73	1	0.06	∞
DUT alignment	0.00	R	1.73	1	0.00	∞
RF Ambient Conditions	0.04	R	1.73	1	0.02	∞
Ambient Reflections	0.04	R	1.73	1	0.02	∞
Immunity/Secondary Reception	0.00	R	1.73	1	0.00	∞
Drift of DUT	0.21	R	1.73	1	0.12	∞
Combined Standard Uncertainty (k=1)		RSS			1.34	∞
Expanded Uncertainty (95% CONFIDENCE LEVEL)		k=2			2.68	

FCC ID: A3LSMS916U	6 – 8 GHZ RF EXPOSURE EVALUATION	Approved by: Technical Manager
Document S/N: 1M2209010097-27.A3L	DUT Type: Portable Handset	Page 30 of 34

15 CONCLUSION

15.1 Measurement Conclusion

The SAR and power density measurements indicate that the DUT complies with the RF radiation exposure limits of the FCC, with respect to all parameters subject to this test. These measurements were taken to simulate the RF effects of RF exposure under worst-case conditions. Precise laboratory measures were taken to assure repeatability of the tests. The results and statements relate only to the item(s) tested.

Please note that the RF Exposure and distribution of electromagnetic energy in the body are very complex phenomena that depend on the mass, shape, and size of the body, the orientation of the body with respect to the field vectors, and the electrical properties of both the body and the environment. Other variables that may play a substantial role in possible biological effects are those that characterize the environment (e.g. ambient temperature, air velocity, relative humidity, and body insulation) and those that characterize the individual (e.g. age, gender, activity level, debilitation, or disease). Because various factors may interact with one another to vary the specific biological outcome of an exposure to electromagnetic fields, any protection guide should consider maximal amplification of biological effects as a result of field-body interactions, environmental conditions, and physiological variables.

FCC ID: A3LSMS916U	6 – 8 GHZ RF EXPOSURE EVALUATION	Approved by: Technical Manager
Document S/N: 1M2209010097-27.A3L	DUT Type: Portable Handset	Page 31 of 34

16 REFERENCES

- [1] ANSI/IEEE C95.1-1992, American National Standard safety levels with respect to human exposure to radio frequency electromagnetic fields, 3kHz to 300GHz, New York: IEEE, Sept. 1992.
- [2] IEC/IEEE 63195-1:2022, Assessment of power density of human exposure to radio frequency fields from wireless devices in close proximity to the head and body (frequency range of 6 GHz to 300 GHz)
- [3] IEC TR 62630: 2010, Guidance for Evaluating Exposure from Multiple Electromagnetic Sources
- [4] K. Pokovic, T. Schmid, J. Frohlich, and N. Kuster. Novel Probes and Evaluation Procedures to Assess Field Magnitude and Polarization. IEEE Transactions on Electromagnetic Compatibility 42(2): 240 -244, 2000
- [5] R. W. Gerchberg and W. O. Saxton. A Practical Algorithm for the Determination of Phase from Image and Diffraction Plane Pictures. Optik 35(2): 237 – 246, 1972
- [6] A. P. Anderson and S. Sali. New Possibilities for Phaseless Microwave Diagnostics. Part 1: Error Reduction Techniques. IEE Proceedings H – Microwaves, Antennas and Propagation 132(5): 290 – 298, 1985
- [7] FCC KDB 865664 D02 v01r04: SAR Measurement Requirements for 100 MHz to 6 GHz. Federal Communications Commission – Office of Engineering and Technology, Laboratory Division.
- [8] FCC KDB 447498 D04 v01: RF Exposure Procedures and Equipment Authorization Policies for Mobile and Portable Devices. Federal Communications Commission – Office of Engineering and Technology, Laboratory Division.
- [9] November 2017 Telecommunications Certification Body Council (TCBC) Workshop Notes
- [10] October 2018 Telecommunications Certification Body Council (TCBC) Workshop Notes
- [11] April 2019 Telecommunications Certification Body Council (TCBC) Workshop Notes
- [12] November 2019 Telecommunications Certification Body Council (TCBC) Workshop Notes
- [13] SPEAG DASY6 System Handbook (September 2019)
- [14] SPEAG DASY6 Application Note (Interim Procedures for Devices Operating at 6-10 GHz)
- [15] Federal Communications Commission, ET Docket 93-62, Guidelines for Evaluating the Environmental Effects of Radiofrequency Radiation, Aug. 1996.
- [16] ANSI/IEEE C95.1-2005, American National Standard safety levels with respect to human exposure to radio frequency electromagnetic fields, 3kHz to 300GHz, New York: IEEE, 2006.
- [17] ANSI/IEEE C95.3-2002, IEEE Recommended Practice for the Measurement of Potentially Hazardous Electromagnetic Fields - RF and Microwave, New York: IEEE, December 2002.
- [18] IEEE Standards Coordinating Committee 39 –Standards Coordinating Committee 34 – IEEE Std. 1528-2013, IEEE Recommended Practice for Determining the Peak Spatial-Average Specific Absorption Rate (SAR) in the Human Head from Wireless Communications Devices: Measurement Techniques.

FCC ID: A3LSMS916U	6 – 8 GHZ RF EXPOSURE EVALUATION	Approved by: Technical Manager
Document S/N: 1M2209010097-27.A3L	DUT Type: Portable Handset	Page 32 of 34

- [19] NCRP, National Council on Radiation Protection and Measurements, Biological Effects and Exposure Criteria for RadioFrequency Electromagnetic Fields, NCRP Report No. 86, 1986. Reprinted Feb. 1995.
- [20] T. Schmid, O. Egger, N. Kuster, Automated E-field scanning system for dosimetric assessments, IEEE Transaction on Microwave Theory and Techniques, vol. 44, Jan. 1996, pp. 105-113.
- [21] K. Pokovic, T. Schmid, N. Kuster, Robust setup for precise calibration of E-field probes in tissue simulating liquids at mobile communications frequencies, ICECOM97, Oct. 1997, pp. 1 -124.
- [22] K. Pokovic, T. Schmid, and N. Kuster, E-field Probe with improved isotropy in brain simulating liquids, Proceedings of the ELMAR, Zadar, Croatia, June 23-25, 1996, pp. 172-175.
- [23] Schmid & Partner Engineering AG, Application Note: Data Storage and Evaluation, June 1998, p2.
- [24] V. Hombach, K. Meier, M. Burkhardt, E. Kuhn, N. Kuster, The Dependence of EM Energy Absorption upon Human Modeling at 900 MHz, IEEE Transaction on Microwave Theory and Techniques, vol. 44 no. 10, Oct. 1996, pp. 1865-1873.
- [25] N. Kuster and Q. Balzano, Energy absorption mechanism by biological bodies in the near field of dipole antennas above 300MHz, IEEE Transaction on Vehicular Technology, vol. 41, no. 1, Feb. 1992, pp. 17-23.
- [26] G. Hartsgrove, A. Kraszewski, A. Surowiec, Simulated Biological Materials for Electromagnetic Radiation Absorption Studies, University of Ottawa, Bioelectromagnetics, Canada: 1987, pp. 29-36.
- [27] Q. Balzano, O. Garay, T. Manning Jr., Electromagnetic Energy Exposure of Simulated Users of Portable Cellular Telephones, IEEE Transactions on Vehicular Technology, vol. 44, no.3, Aug. 1995.
- [28] W. Gander, Computermathematick, Birkhaeuser, Basel, 1992.
- [29] W.H. Press, S.A. Teukolsky, W.T. Vetterling, and B.P. Flannery, Numerical Recipes in C, The Art of Scientific Computing, Second edition, Cambridge University Press, 1992.
- [30] N. Kuster, R. Kastle, T. Schmid, Dosimetric evaluation of mobile communications equipment with known precision, IEEE Transaction on Communications, vol. E80-B, no. 5, May 1997, pp. 645-652.
- [31] CENELEC CLC/SC111B, European Prestandard (prENV 50166-2), Human Exposure to Electromagnetic Fields High-frequency: 10kHz-300GHz, Jan. 1995.
- [32] Prof. Dr. Niels Kuster, ETH, Eidgenössische Technische Hochschule Zürich, Dosimetric Evaluation of the Cellular Phone.
- [33] IEC 62209-1, Measurement procedure for the assessment of specific absorption rate of human exposure to radio frequency fields from hand-held and body-mounted wireless communication devices - Part 1: Devices used next to the ear (Frequency range of 300 MHz to 6 GHz), July 2016.
- [34] Innovation, Science, Economic Development Canada RSS-102 Radio Frequency Exposure Compliance of Radiocommunication Apparatus (All Frequency Bands) Issue 5, March 2015.
- [35] Health Canada Safety Code 6 Limits of Human Exposure to Radio Frequency Electromagnetic Fields in the Frequency Range from 3 kHz – 300 GHz, 2015
- [36] FCC SAR Test Procedures for 2G-3G Devices, Mobile Hotspot and UMPC Devices KDB Publications 941225, D01-D07

FCC ID: A3LSMS916U	6 – 8 GHZ RF EXPOSURE EVALUATION	Approved by: Technical Manager
Document S/N: 1M2209010097-27.A3L	DUT Type: Portable Handset	Page 33 of 34

- [37] SAR Measurement Guidance for IEEE 802.11 Transmitters, KDB Publication 248227 D01
- [38] FCC SAR Considerations for Handsets with Multiple Transmitters and Antennas, KDB Publications 648474 D03-D04
- [39] FCC SAR Evaluation Considerations for Laptop, Notebook, Netbook and Tablet Computers, FCC KDB Publication 616217 D04
- [40] FCC SAR Measurement and Reporting Requirements for 100MHz – 6 GHz, KDB Publications 865664 D01-D02
- [41] FCC General RF Exposure Guidance and SAR Procedures for Dongles, KDB Publication 447498, D01-D02
- [42] Anexo à Resolução No. 533, de 10 de Setembro de 2009.
- [43] IEC 62209-2, Human exposure to radio frequency fields from hand-held and body-mounted wireless communication devices - Human models, instrumentation, and procedures - Part 2: Procedure to determine the specific absorption rate (SAR) for wireless communication devices used in close proximity to the human body (frequency range of 30 MHz to 6 GHz), Mar. 2010.
- [44] ANSI/IEEE C95.1-1992, American National Standard safety levels with respect to human exposure to radio frequency electromagnetic fields, 3kHz to 300GHz, New York: IEEE, Sept. 1992.

FCC ID: A3LSMS916U	6 – 8 GHZ RF EXPOSURE EVALUATION	Approved by: Technical Manager
Document S/N: 1M2209010097-27.A3L	DUT Type: Portable Handset	Page 34 of 34