

LTE Band 4

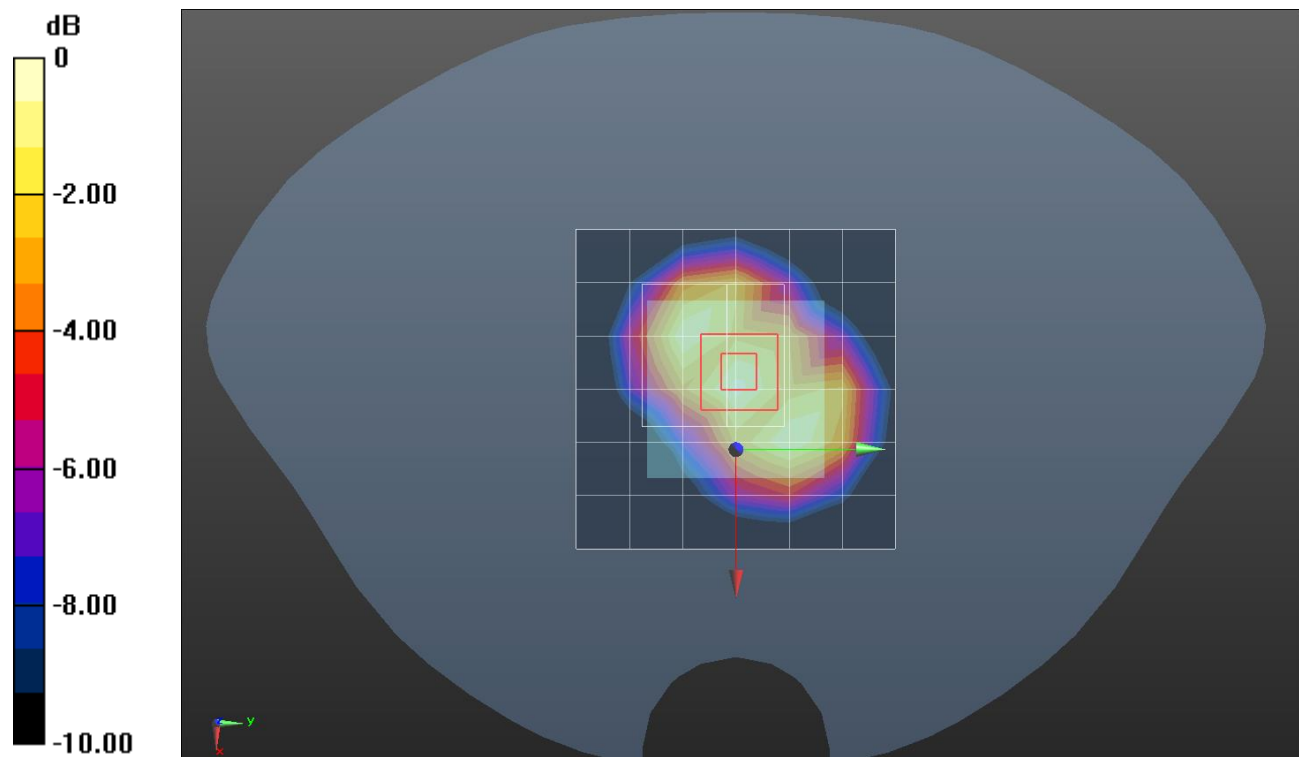
Frequency: 1732.5 MHz; Duty Cycle: 1:1; Room Ambient Temperature: 23.0°C; Liquid Temperature: 22.0°C
 Medium parameters used (interpolated): $f = 1732.5$ MHz; $\sigma = 1.313$ S/m; $\epsilon_r = 39.161$; $\rho = 1000$ kg/m³

DASY5 Configuration:

- Area Scan Setting: Find Secondary Maximum Within: 2.0 dB and with a peak SAR value greater than 0.0012W/kg
- Electronics: DAE4 Sn1494; Calibrated: 2016-07-18
- Probe: EX3DV4 - SN7314; ConvF(8.62, 8.62, 8.62); Calibrated: 2016-09-27;
- Sensor-Surface: 2.5mm (Mechanical Surface Detection)
- Phantom: SAM Phantom CRP v5.0(Middle); Type: QD000P40CD; Serial: TP:1854

Next to mouth/QPSK RB 1/99 ch 20175/Area Scan (7x7x1): Measurement grid: dx=15mm, dy=15mm
 Maximum value of SAR (measured) = 0.961 W/kg

Next to mouth/QPSK RB 1/99 ch 20175/Zoom Scan (6x6x7)/Cube 0: Measurement grid: dx=8mm, dy=8mm, dz=5mm
 Reference Value = 27.10 V/m; Power Drift = -0.00 dB
 Peak SAR (extrapolated) = 1.34 W/kg
SAR(1 g) = 0.866 W/kg; SAR(10 g) = 0.522 W/kg
 Maximum value of SAR (measured) = 1.03 W/kg



0 dB = 1.03 W/kg = 0.13 dBW/kg

LTE Band 4

Frequency: 1732.5 MHz; Duty Cycle: 1:1; Room Ambient Temperature: 23.0°C; Liquid Temperature: 22.0°C
Medium parameters used (interpolated): $f = 1732.5$ MHz; $\sigma = 1.425$ S/m; $\epsilon_r = 52.831$; $\rho = 1000$ kg/m³

DASY5 Configuration:

- Area Scan Setting: Find Secondary Maximum Within: 2.0 dB and with a peak SAR value greater than 0.0012W/kg
- Electronics: DAE4 Sn1494; Calibrated: 2016-07-18
- Probe: EX3DV4 - SN7314; ConvF(8.24, 8.24, 8.24); Calibrated: 2016-09-27;
- Sensor-Surface: 2.5mm (Mechanical Surface Detection)
- Phantom: ELI v6.0; Type: QDOVA003AA; Serial: TP:2001

Extremity/QPSK RB 1/99 ch 20175/Area Scan (6x6x1): Measurement grid: dx=15mm, dy=15mm
Maximum value of SAR (measured) = 1.94 W/kg

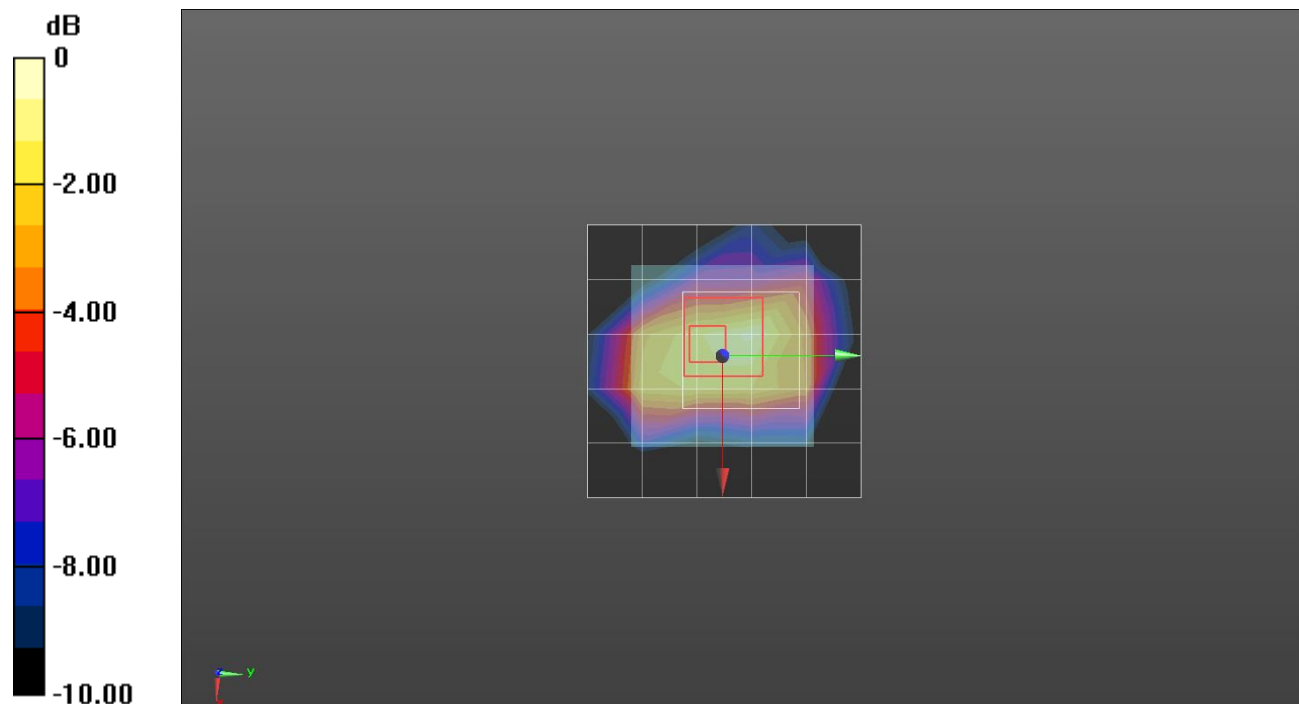
Extremity/QPSK RB 1/99 ch 20175/Zoom Scan (5x5x7)/Cube 0: Measurement grid: dx=8mm, dy=8mm, dz=5mm

Reference Value = 35.42 V/m; Power Drift = 0.04 dB

Peak SAR (extrapolated) = 2.54 W/kg

SAR(1 g) = 1.76 W/kg; SAR(10 g) = 1.19 W/kg

Maximum value of SAR (measured) = 2.16 W/kg



0 dB = 2.16 W/kg = 3.34 dBW/kg

LTE Band 13

Frequency: 782 MHz; Duty Cycle: 1:1; Room Ambient Temperature: 23.0°C; Liquid Temperature: 22.0°C
 Medium parameters used (interpolated): $f = 782 \text{ MHz}$; $\sigma = 0.924 \text{ S/m}$; $\epsilon_r = 42.325$; $\rho = 1000 \text{ kg/m}^3$

DASY5 Configuration:

- Area Scan Setting: Find Secondary Maximum Within: 2.0 dB and with a peak SAR value greater than 0.0012W/kg
- Electronics: DAE4 Sn1468; Calibrated: 2016-09-08
- Probe: EX3DV4 - SN7330; ConvF(10.39, 10.39, 10.39); Calibrated: 2016-02-24;
- Sensor-Surface: 2.5mm (Mechanical Surface Detection)
- Phantom: SAM (20deg probe tilt) with CRP v5.0(Middle); Type: QD000P40CD; Serial: TP:1847

Next to mouth/QPSK RB 1/0 ch 23230/Area Scan (7x7x1): Measurement grid: dx=15mm, dy=15mm
 Maximum value of SAR (measured) = 0.0235 W/kg

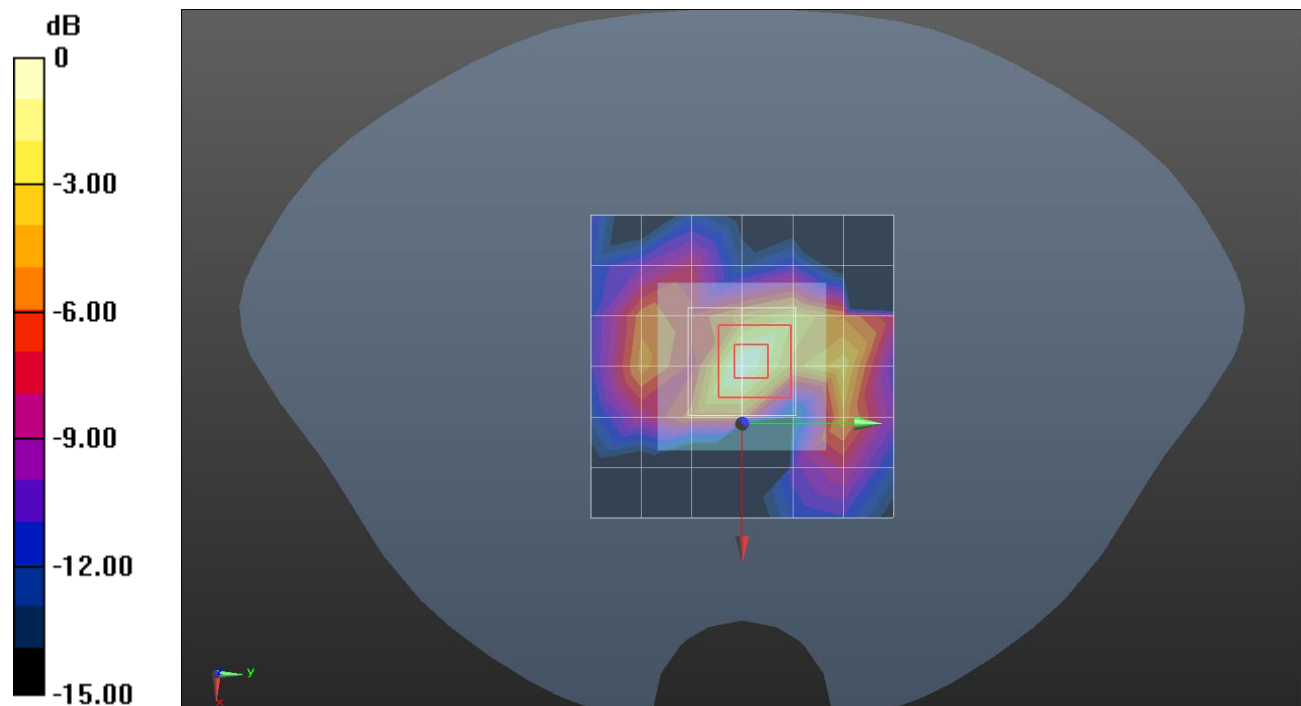
Next to mouth/QPSK RB 1/0 ch 23230/Zoom Scan (5x5x7)/Cube 0: Measurement grid: dx=8mm, dy=8mm, dz=5mm

Reference Value = 5.000 V/m; Power Drift = -0.12 dB

Peak SAR (extrapolated) = 0.0310 W/kg

SAR(1 g) = 0.014 W/kg; SAR(10 g) = 0.00513 W/kg

Maximum value of SAR (measured) = 0.0211 W/kg



0 dB = 0.0211 W/kg = -16.76 dBW/kg

LTE Band 13

Frequency: 782 MHz; Duty Cycle: 1:1; Room Ambient Temperature: 23.0°C; Liquid Temperature: 22.0°C
 Medium parameters used (interpolated): $f = 782 \text{ MHz}$; $\sigma = 0.99 \text{ S/m}$; $\epsilon_r = 55.221$; $\rho = 1000 \text{ kg/m}^3$

DASY5 Configuration:

- Area Scan Setting: Find Secondary Maximum Within: 2.0 dB and with a peak SAR value greater than 0.0012W/kg
- Electronics: DAE4 Sn1468; Calibrated: 2016-09-08
- Probe: EX3DV4 - SN7330; ConvF(10.11, 10.11, 10.11); Calibrated: 2016-02-24;
- Sensor-Surface: 2.5mm (Mechanical Surface Detection)
- Phantom: ELI v6.0; Type: QDOVA003AA; Serial: TP:2005

Extremity/QPSK RB 1/0 ch 23230/Area Scan (6x6x1): Measurement grid: dx=15mm, dy=15mm
 Maximum value of SAR (measured) = 0.508 W/kg

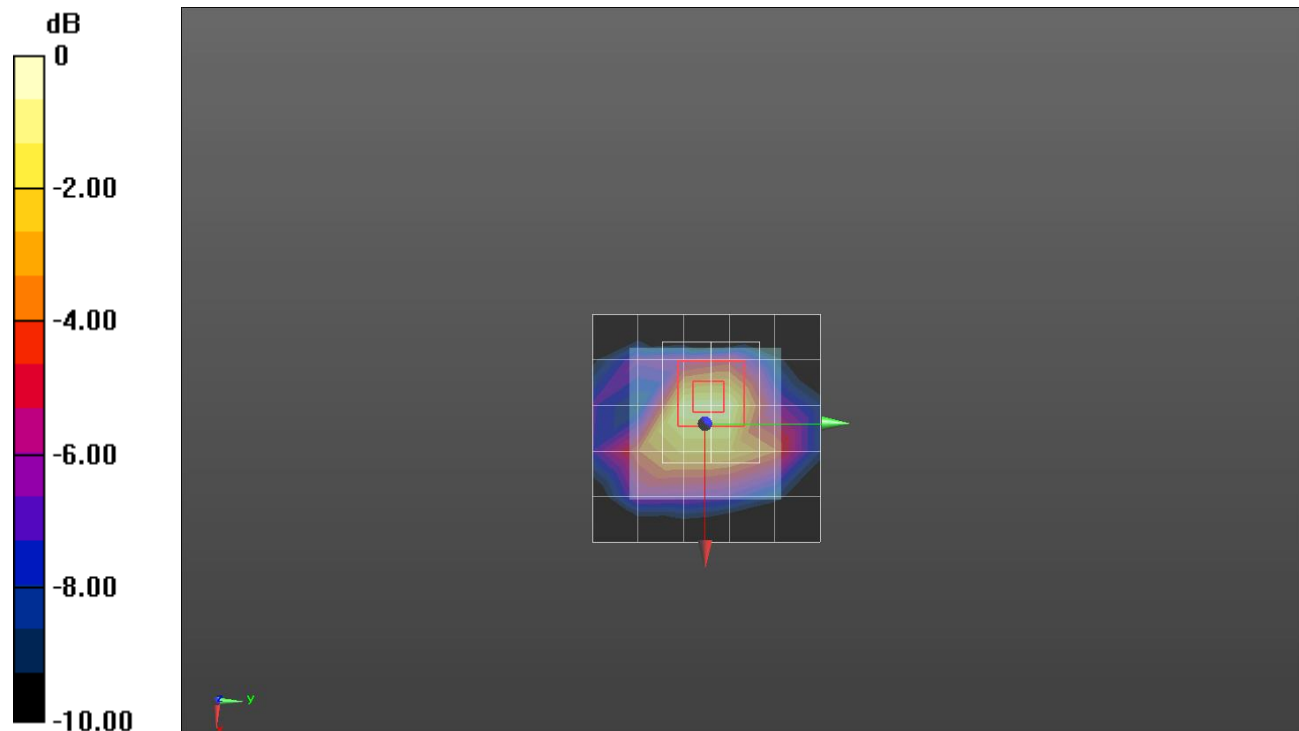
Extremity/QPSK RB 1/0 ch 23230/Zoom Scan (6x5x7)/Cube 0: Measurement grid: dx=8mm, dy=8mm, dz=5mm

Reference Value = 23.19 V/m; Power Drift = 0.12 dB

Peak SAR (extrapolated) = 1.12 W/kg

SAR(1 g) = 0.531 W/kg; SAR(10 g) = 0.223 W/kg

Maximum value of SAR (measured) = 0.615 W/kg



0 dB = 0.615 W/kg = -2.11 dBW/kg

Wi-Fi 2.45 GHz

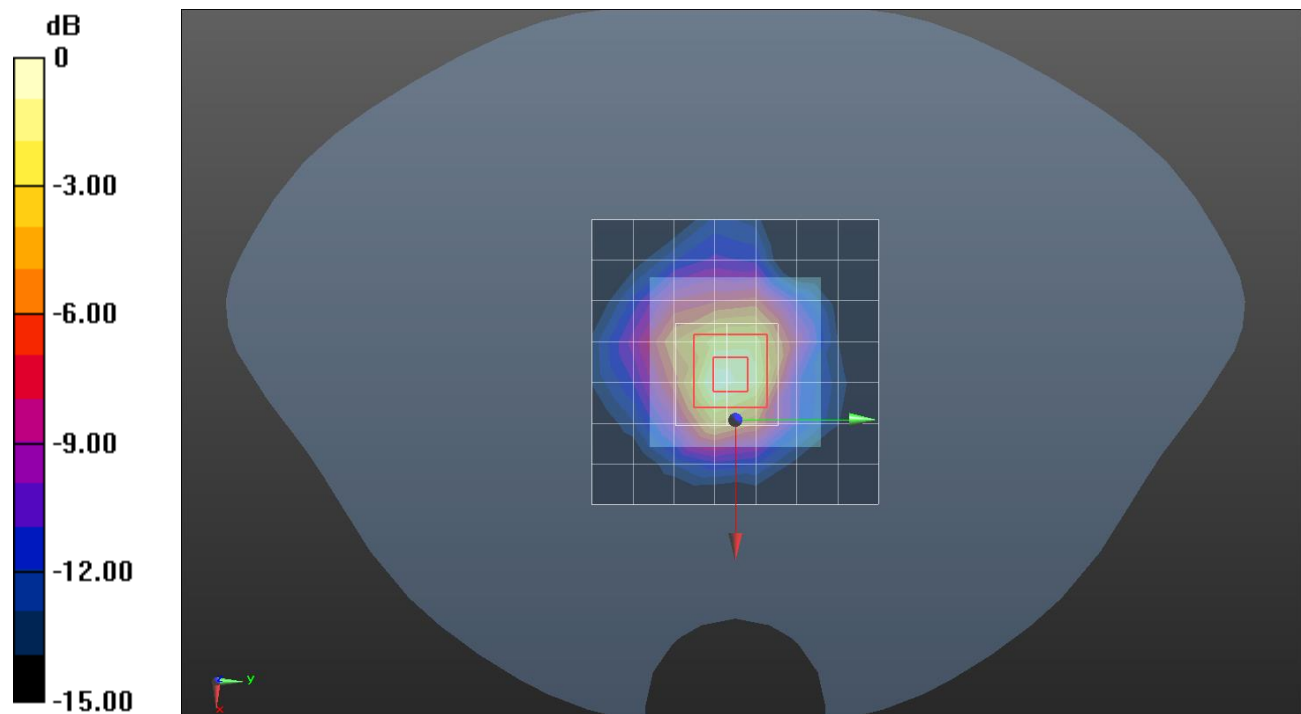
Frequency: 2412 MHz; Duty Cycle: 1:1; Room Ambient Temperature: 23.0°C; Liquid Temperature: 22.0°C
 Medium parameters used (interpolated): $f = 2412$ MHz; $\sigma = 1.799$ S/m; $\epsilon_r = 39.031$; $\rho = 1000$ kg/m³

DASY5 Configuration:

- Area Scan Setting: Find Secondary Maximum Within: 2.0 dB and with a peak SAR value greater than 0.0012W/kg
- Electronics: DAE4 Sn1447; Calibrated: 2016-09-19
- Probe: EX3DV4 - SN7376; ConvF(7.49, 7.49, 7.49); Calibrated: 2016-08-30;
- Sensor-Surface: 2.5mm (Mechanical Surface Detection)
- Phantom: SAM (20deg probe tilt) with CRP v5.0_Front; Type: QD000P40CD; Serial: TP:1877

Next to mouth/802.11 b mode ch 1 /Area Scan (8x8x1): Measurement grid: dx=12mm, dy=12mm
 Maximum value of SAR (measured) = 0.174 W/kg

Next to mouth/802.11 b mode ch 1 /Zoom Scan (7x7x7)/Cube 0: Measurement grid: dx=5mm, dy=5mm, dz=5mm
 Reference Value = 9.755 V/m; Power Drift = -0.01 dB
 Peak SAR (extrapolated) = 0.251 W/kg
SAR(1 g) = 0.136 W/kg; SAR(10 g) = 0.063 W/kg
 Maximum value of SAR (measured) = 0.185 W/kg



0 dB = 0.185 W/kg = -7.33 dBW/kg

Wi-Fi 2.45 GHz

Frequency: 2412 MHz; Duty Cycle: 1:1; Room Ambient Temperature: 23.0°C; Liquid Temperature: 22.0°C
 Medium parameters used (interpolated): $f = 2412$ MHz; $\sigma = 1.955$ S/m; $\epsilon_r = 51.865$; $\rho = 1000$ kg/m³

DASY5 Configuration:

- Area Scan Setting: Find Secondary Maximum Within: 2.0 dB and with a peak SAR value greater than 0.0012W/kg
- Electronics: DAE4 Sn1468; Calibrated: 2016-09-08
- Probe: EX3DV4 - SN7330; ConvF(7.43, 7.43, 7.43); Calibrated: 2016-02-24;
- Sensor-Surface: 2.5mm (Mechanical Surface Detection)
- Phantom: ELI v6.0; Type: QDOVA003AA; Serial: TP:2005

Rear/802.11 b mode ch 1/Area Scan (8x8x1): Measurement grid: dx=12mm, dy=12mm

Maximum value of SAR (measured) = 0.601 W/kg

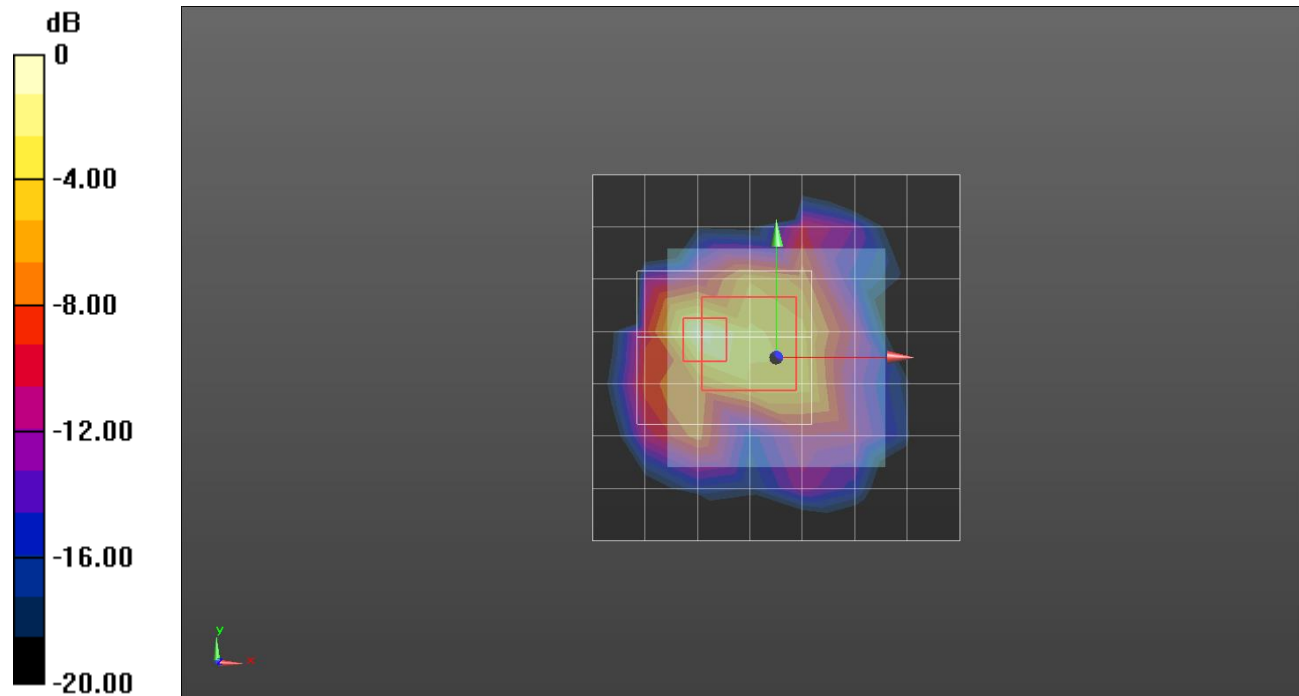
Rear/802.11 b mode ch 1/Zoom Scan (9x8x7)/Cube 0: Measurement grid: dx=5mm, dy=5mm, dz=5mm

Reference Value = 17.36 V/m; Power Drift = 0.06 dB

Peak SAR (extrapolated) = 1.23 W/kg

SAR(1 g) = 0.341 W/kg; SAR(10 g) = 0.144 W/kg

Maximum value of SAR (measured) = 0.659 W/kg



0 dB = 0.659 W/kg = -1.81 dBW/kg

Bluetooth

Frequency: 2480 MHz; Duty Cycle: 1:1.29033; Room Ambient Temperature: 23.0°C; Liquid Temperature: 22.0°C
 Medium parameters used: $f = 2480 \text{ MHz}$; $\sigma = 1.873 \text{ S/m}$; $\epsilon_r = 38.816$; $\rho = 1000 \text{ kg/m}^3$

DASY5 Configuration:

- Area Scan Setting: Find Secondary Maximum Within: 2.0 dB and with a peak SAR value greater than 0.0012W/kg
- Electronics: DAE4 Sn1447; Calibrated: 2016-09-19
- Probe: EX3DV4 - SN7376; ConvF(7.49, 7.49, 7.49); Calibrated: 2016-08-30;
- Sensor-Surface: 2.5mm (Mechanical Surface Detection)
- Phantom: SAM (20deg probe tilt) with CRP v5.0_Front; Type: QD000P40CD; Serial: TP:1877

Next to mouth/Bluetooth GFSK_ch 78/Area Scan (8x8x1): Measurement grid: dx=12mm, dy=12mm
 Maximum value of SAR (measured) = 0.0196 W/kg

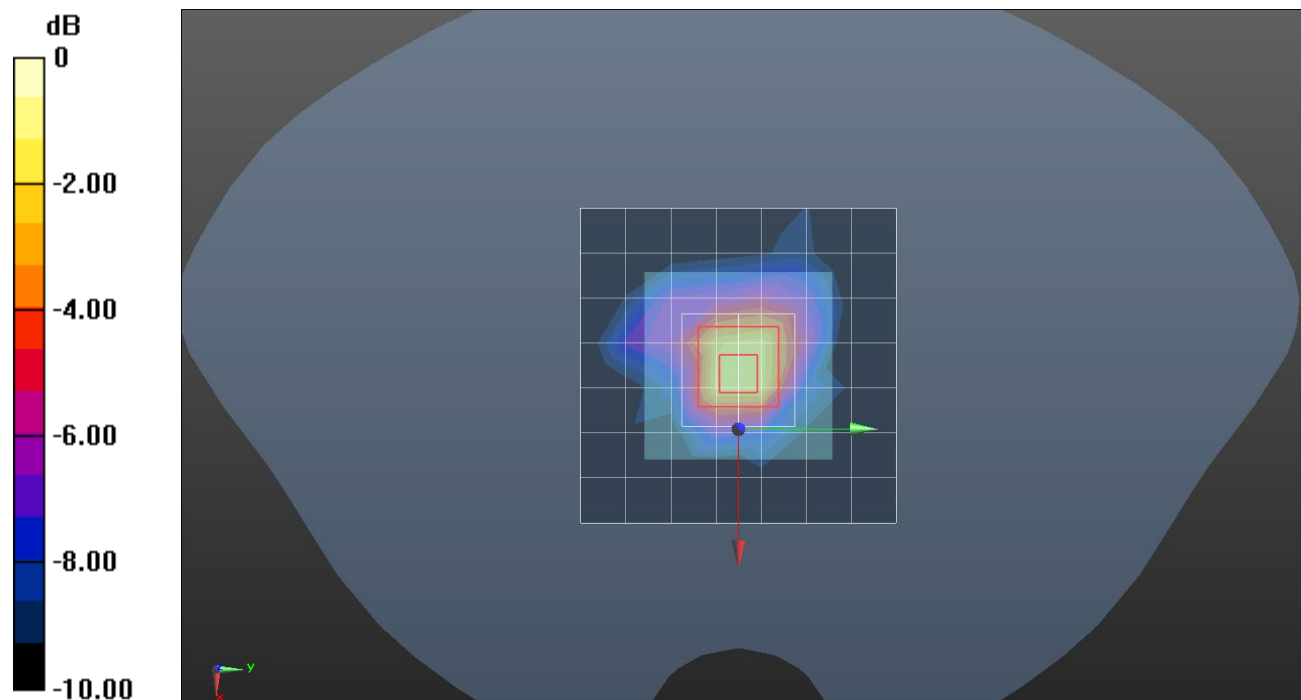
Next to mouth/Bluetooth GFSK_ch 78/Zoom Scan (7x7x7)/Cube 0: Measurement grid: dx=5mm, dy=5mm, dz=5mm

Reference Value = 3.294 V/m; Power Drift = -0.07 dB

Peak SAR (extrapolated) = 0.0370 W/kg

SAR(1 g) = 0.020 W/kg; SAR(10 g) = 0.00708 W/kg

Maximum value of SAR (measured) = 0.0280 W/kg



0 dB = 0.0280 W/kg = -15.53 dBW/kg

Bluetooth

Frequency: 2480 MHz; Duty Cycle: 1:1.29033; Room Ambient Temperature: 23.0°C; Liquid Temperature: 22.0°C
 Medium parameters used: $f = 2480$ MHz; $\sigma = 1.984$ S/m; $\epsilon_r = 52.572$; $\rho = 1000$ kg/m³

DASY5 Configuration:

- Area Scan Setting: Find Secondary Maximum Within: 2.0 dB and with a peak SAR value greater than 0.0012W/kg
- Electronics: DAE4 Sn1468; Calibrated: 2016-09-08
- Probe: EX3DV4 - SN7330; ConvF(7.43, 7.43, 7.43); Calibrated: 2016-02-24;
- Sensor-Surface: 2.5mm (Mechanical Surface Detection)
- Phantom: ELI v6.0; Type: QDOVA003AA; Serial: TP:2005

Rear 10g/Bluetooth GFSK_ ch 78/Area Scan (8x8x1): Measurement grid: dx=12mm, dy=12mm
 Maximum value of SAR (measured) = 0.215 W/kg

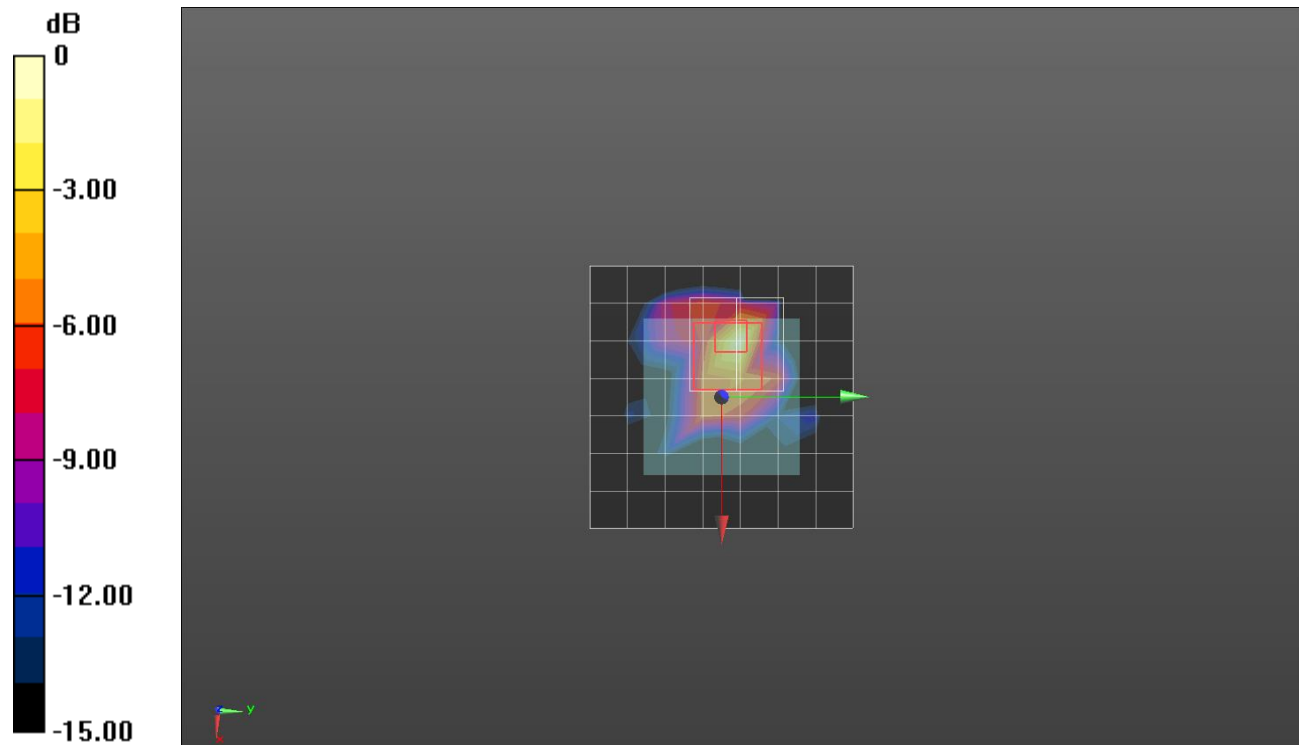
Rear 10g/Bluetooth GFSK_ ch 78/Zoom Scan (7x7x7)/Cube 0: Measurement grid: dx=5mm, dy=5mm, dz=5mm

Reference Value = 10.95 V/m; Power Drift = 0.07 dB

Peak SAR (extrapolated) = 0.503 W/kg

SAR(1 g) = 0.129 W/kg; SAR(10 g) = 0.046 W/kg

Maximum value of SAR (measured) = 0.226 W/kg



0 dB = 0.226 W/kg = -6.46 dBW/kg