

20150820_SystemPerformanceCheck-D2450V2 SN 960

Frequency: 2450 MHz; Duty Cycle: 1:1; Room Ambient Temperature: 24.0°C; Liquid Temperature: 23.0°C
 Medium parameters used: $f = 2450 \text{ MHz}$; $\sigma = 1.992 \text{ S/m}$; $\epsilon_r = 52.426$; $\rho = 1000 \text{ kg/m}^3$

DASY5 Configuration:

- Area Scan Setting: Find Secondary Maximum Within: 2.0 dB and with a peak SAR value greater than 0.0012W/kg
- Averaged Fast SAR: Polynomial fit
- Electronics: DAE4 Sn1447; Calibrated: 2014-08-25
- Probe: EX3DV4 - SN7313; ConvF(7.12, 7.12, 7.12); Calibrated: 2015-07-23;
- Sensor-Surface: 4mm (Mechanical Surface Detection), Sensor-Surface: 2.5mm (Mechanical Surface Detection)
- Phantom: SAM (20deg probe tilt) with CRP v5.0(Middle); Type: QD000P40CD; Serial: TP:xxxx

Body/Pin=100 mW 2/Area Scan (7x7x1): Measurement grid: dx=15mm, dy=15mm

Maximum value of SAR (measured) = 4.39 W/kg

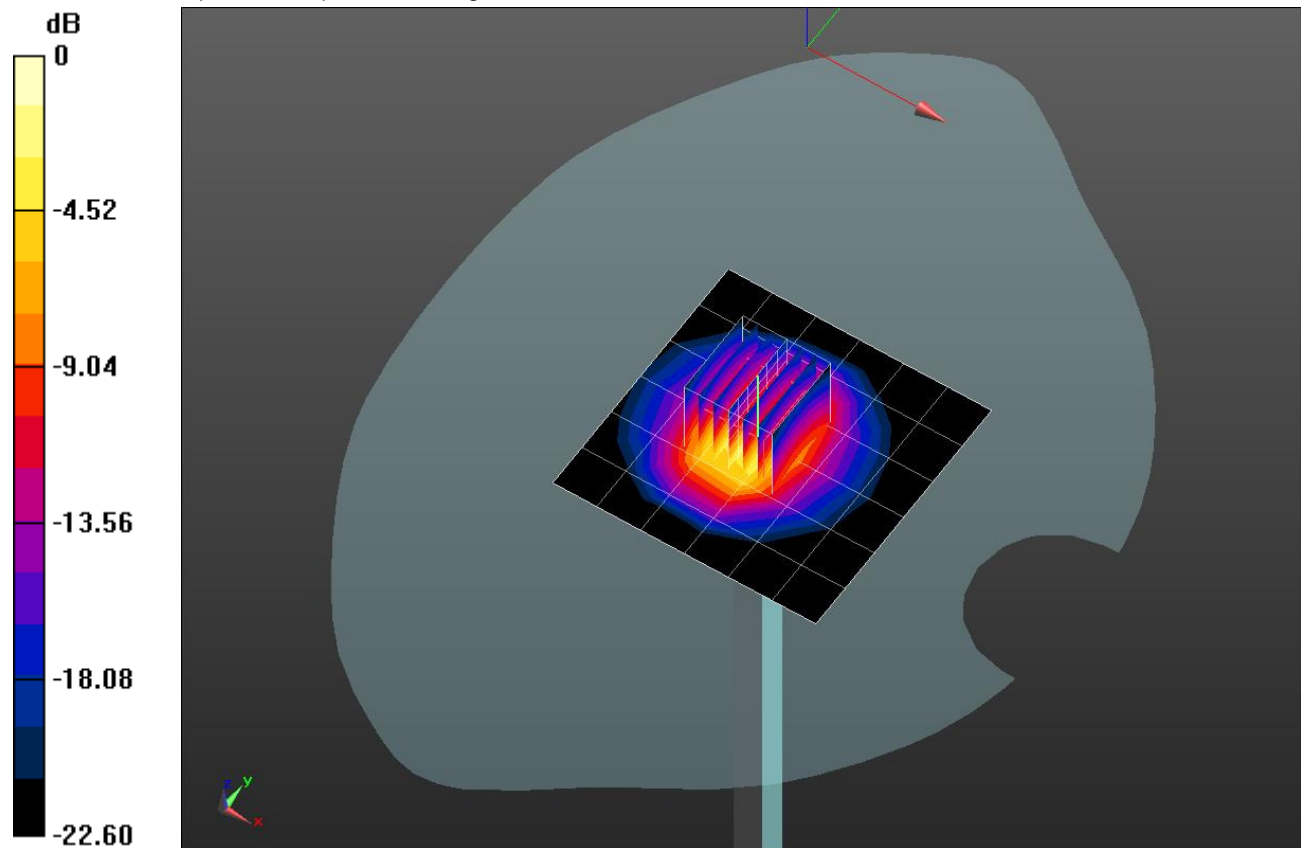
Body/Pin=100 mW 2/Zoom Scan (7x7x7)/Cube 0: Measurement grid: dx=5mm, dy=5mm, dz=5mm

Reference Value = 63.96 V/m; Power Drift = 0.02 dB

Peak SAR (extrapolated) = 10.9 W/kg

SAR(1 g) = 5.23 W/kg; SAR(10 g) = 2.41 W/kg

Maximum value of SAR (measured) = 7.47 W/kg

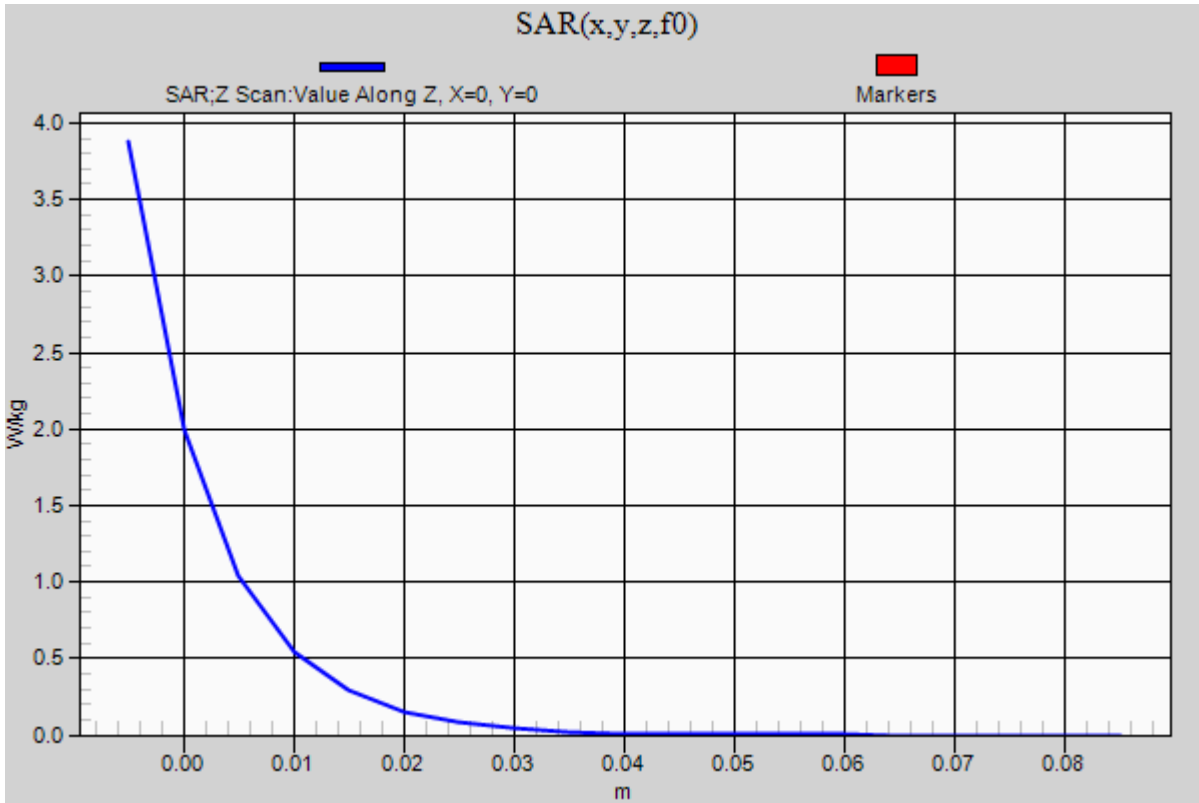


0 dB = 7.47 W/kg = 8.73 dBW/kg

20150820_SystemPerformanceCheck-D2450V2 SN 960

Frequency: 2450 MHz; Duty Cycle: 1:1

Body/Pin=100 mW 2/Z Scan (1x1x21): Measurement grid: dx=20mm, dy=20mm, dz=5mm
Maximum value of SAR (measured) = 3.88 W/kg



20150824_SystemPerformanceCheck-D2450V2 SN 960

Frequency: 2450 MHz; Duty Cycle: 1:1; Room Ambient Temperature: 24.0°C; Liquid Temperature: 23.0°C
 Medium parameters used: $f = 2450 \text{ MHz}$; $\sigma = 2.021 \text{ S/m}$; $\epsilon_r = 52.974$; $\rho = 1000 \text{ kg/m}^3$

DASY5 Configuration:

- Area Scan Setting: Find Secondary Maximum Within: 2.0 dB and with a peak SAR value greater than 0.0012W/kg
- Averaged Fast SAR: Polynomial fit
- Electronics: DAE4 Sn1447; Calibrated: 2014-08-25
- Probe: EX3DV4 - SN7313; ConvF(7.12, 7.12, 7.12); Calibrated: 2015-07-23;
- Sensor-Surface: 4mm (Mechanical Surface Detection)
- Phantom: SAM (20deg probe tilt) with CRP v5.0(Middle); Type: QD000P40CD; Serial: TP:xxxx

Body/Pin=100 mW 2/Area Scan (7x7x1): Measurement grid: dx=15mm, dy=15mm

Maximum value of SAR (measured) = 5.03 W/kg

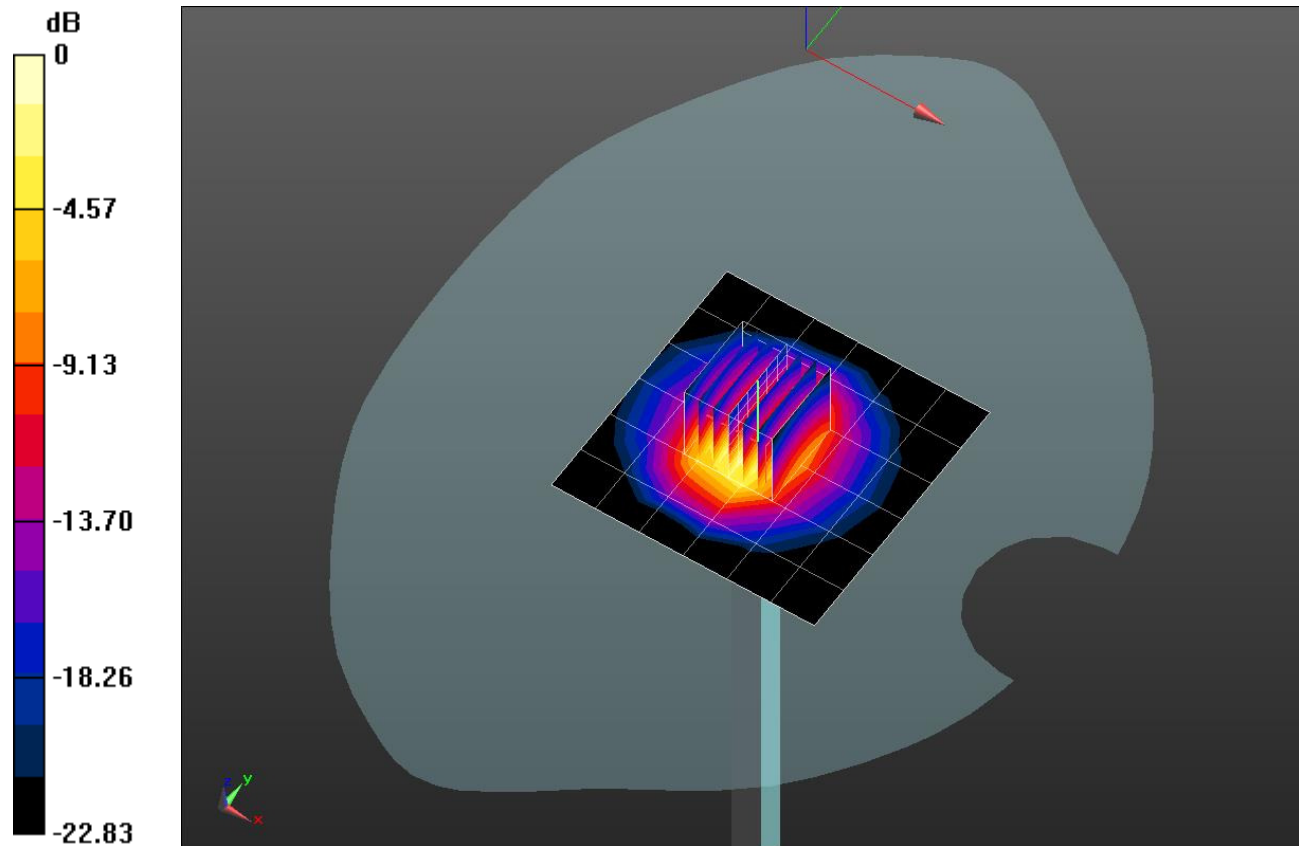
Body/Pin=100 mW 2/Zoom Scan (7x7x7) (7x7x7)/Cube 0: Measurement grid: dx=5mm, dy=5mm, dz=5mm

Reference Value = 64.95 V/m; Power Drift = -0.01 dB

Peak SAR (extrapolated) = 11.3 W/kg

SAR(1 g) = 5.33 W/kg; SAR(10 g) = 2.42 W/kg

Maximum value of SAR (measured) = 6.13 W/kg

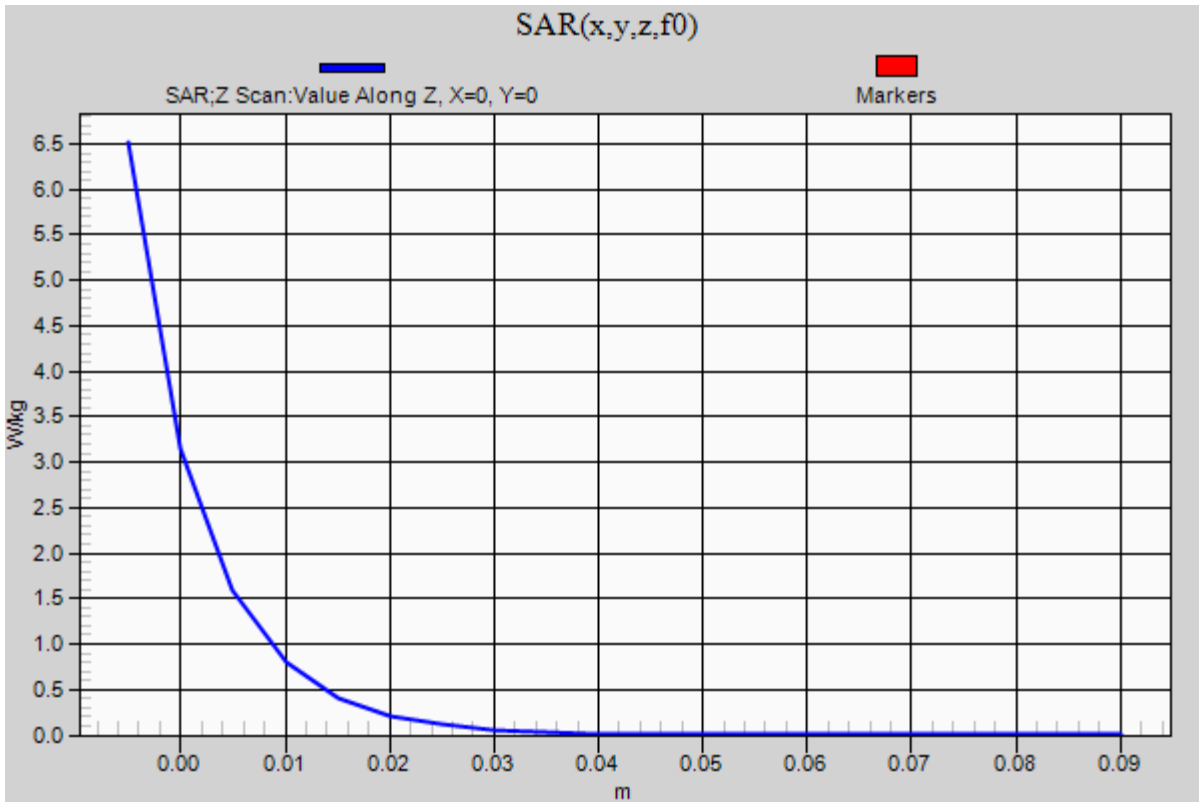


0 dB = 6.13 W/kg = 7.87 dBW/kg

20150824_SystemPerformanceCheck-D2450V2 SN 960

Frequency: 2450 MHz; Duty Cycle: 1:1

Body/Pin=100 mW 2/Z Scan (1x1x21): Measurement grid: dx=20mm, dy=20mm, dz=5mm
Maximum value of SAR (measured) = 6.52 W/kg



20150819_SystemPerformanceCheck-D2450V2 SN 960

Frequency: 2450 MHz; Duty Cycle: 1:1; Room Ambient Temperature: 24.0°C; Liquid Temperature: 23.0°C
 Medium parameters used: $f = 2450$ MHz; $\sigma = 1.829$ S/m; $\epsilon_r = 37.907$; $\rho = 1000$ kg/m³

DASY5 Configuration:

- Area Scan Setting: Find Secondary Maximum Within: 2.0 dB and with a peak SAR value greater than 0.0012W/kg
- Averaged Fast SAR: Polynomial fit
- Electronics: DAE4 Sn614; Calibrated: 2014-09-18
- Probe: EX3DV4 - SN7314; ConvF(7.23, 7.23, 7.23); Calibrated: 2014-08-27;
- Sensor-Surface: 4mm (Mechanical Surface Detection)
- Phantom: SAM Phantom CRP v5.0(Middle); Type: QD000P40CD; Serial: TP:1854

Head/Pin=100 mW 2/Area Scan (9x8x1): Measurement grid: dx=12mm, dy=12mm

Maximum value of SAR (measured) = 5.28 W/kg

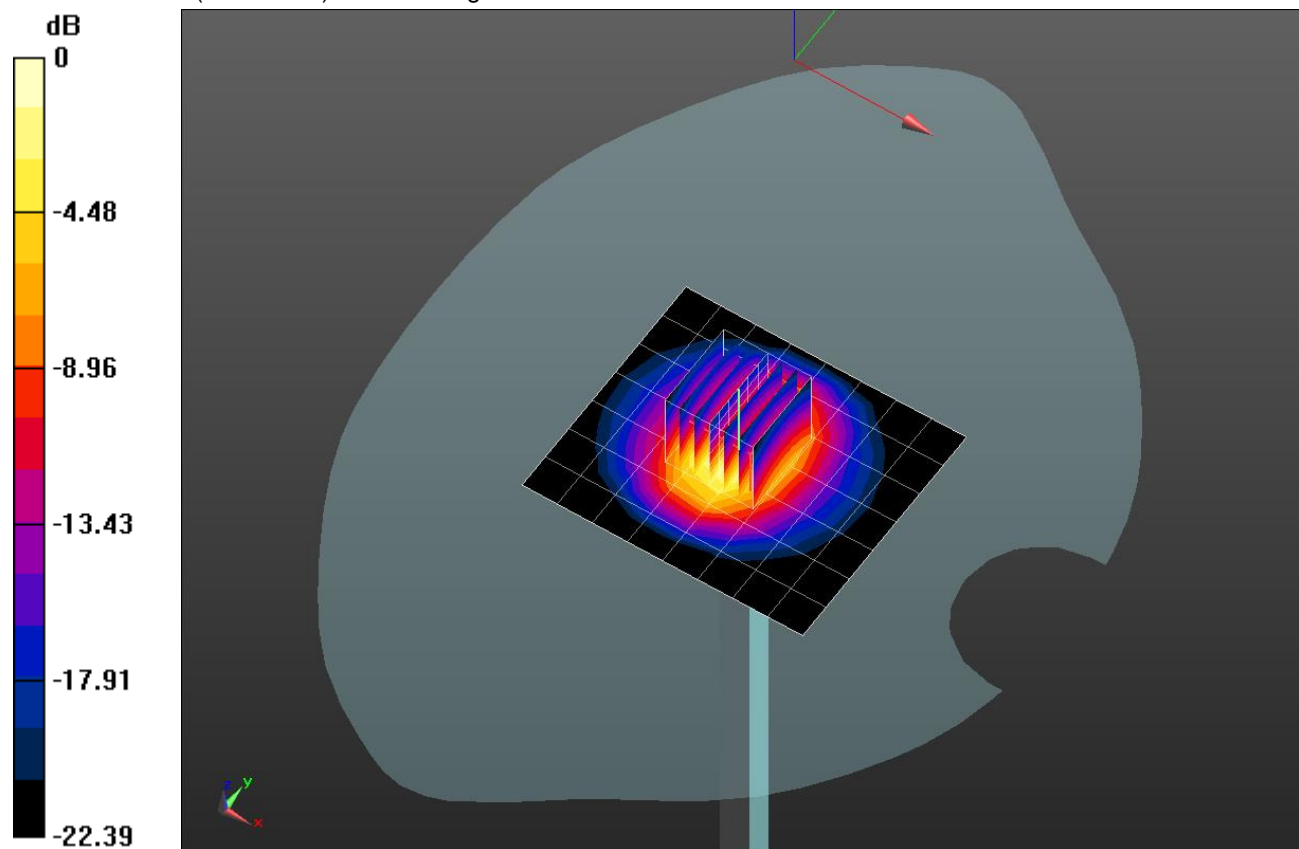
Head/Pin=100 mW 2/Zoom Scan (7x7x7) (7x7x7)/Cube 0: Measurement grid: dx=5mm, dy=5mm, dz=5mm

Reference Value = 66.15 V/m; Power Drift = -0.04 dB

Peak SAR (extrapolated) = 10.8 W/kg

SAR(1 g) = 5.15 W/kg; SAR(10 g) = 2.38 W/kg

Maximum value of SAR (measured) = 5.84 W/kg

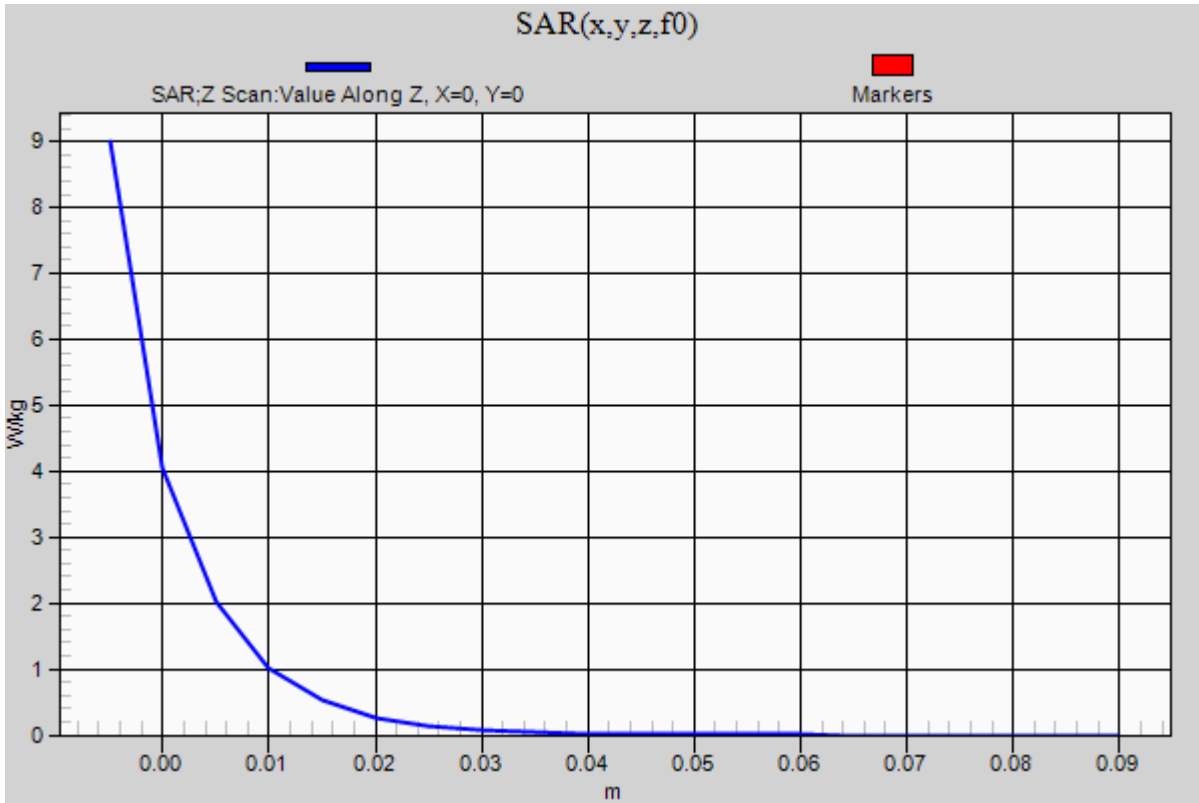


0 dB = 5.84 W/kg = 7.66 dBW/kg

20150819_SystemPerformanceCheck-D2450V2 SN 960

Frequency: 2450 MHz; Duty Cycle: 1:1

Head/Pin=100 mW 2/Z Scan (1x1x21): Measurement grid: dx=20mm, dy=20mm, dz=5mm
Maximum value of SAR (measured) = 9.00 W/kg



20150822_SystemPerformanceCheck-D2450V2 SN 960

Frequency: 2450 MHz; Duty Cycle: 1:1; Room Ambient Temperature: 24.0°C; Liquid Temperature: 23.0°C
 Medium parameters used: $f = 2450 \text{ MHz}$; $\sigma = 1.875 \text{ S/m}$; $\epsilon_r = 37.775$; $\rho = 1000 \text{ kg/m}^3$

DASY5 Configuration:

- Area Scan Setting: Find Secondary Maximum Within: 2.0 dB and with a peak SAR value greater than 0.0012W/kg
- Averaged Fast SAR: Polynomial fit
- Electronics: DAE4 Sn1446; Calibrated: 2015-08-17
- Probe: EX3DV4 - SN7314; ConvF(7.23, 7.23, 7.23); Calibrated: 2014-08-27;
- Sensor-Surface: 4mm (Mechanical Surface Detection)
- Phantom: SAM Phantom CRP v5.0(Middle); Type: QD000P40CD; Serial: TP:1854

Head/Pin=100 mW 2/Area Scan (9x8x1): Measurement grid: dx=12mm, dy=12mm

Maximum value of SAR (measured) = 5.70 W/kg

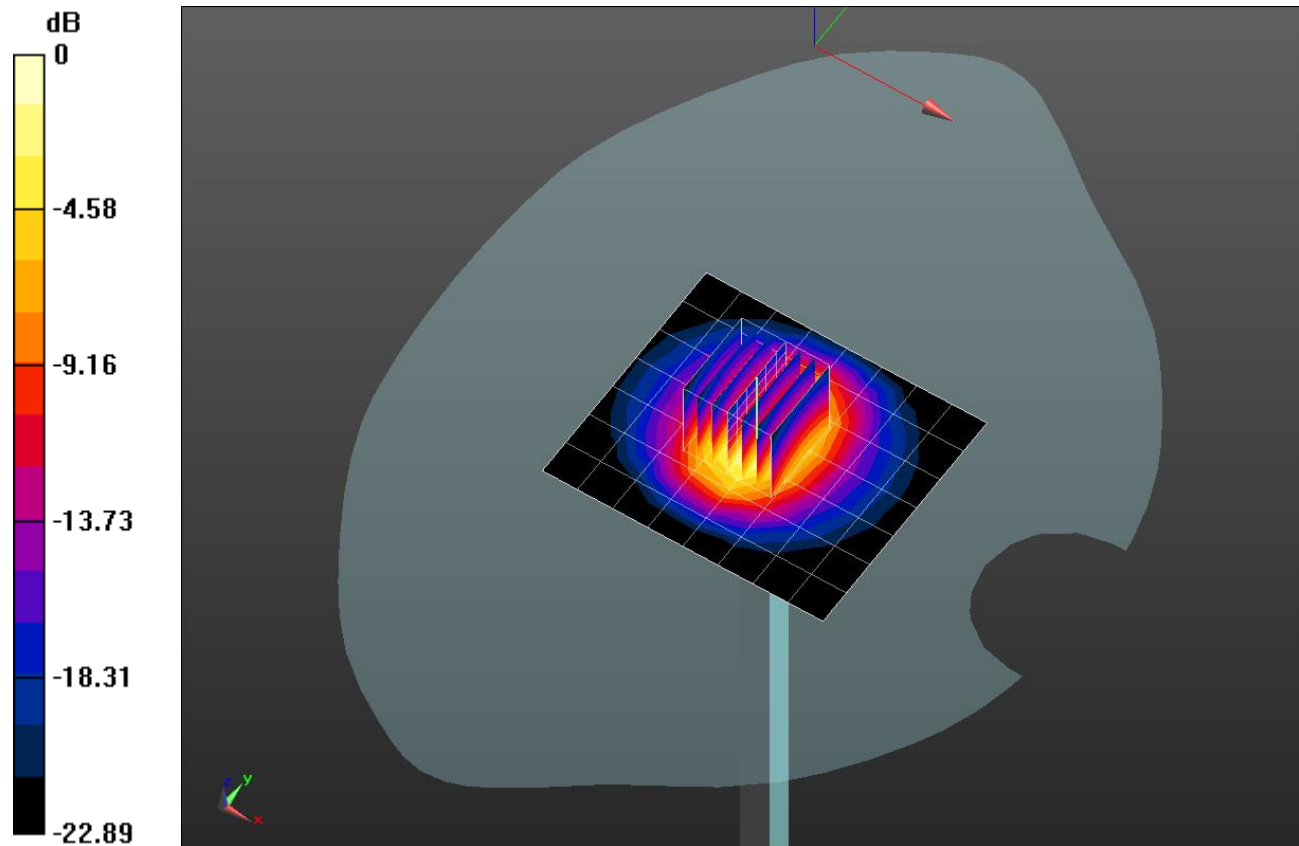
Head/Pin=100 mW 2/Zoom Scan (7x7x7) (7x7x7)/Cube 0: Measurement grid: dx=5mm, dy=5mm, dz=5mm

Reference Value = 68.02 V/m; Power Drift = -0.11 dB

Peak SAR (extrapolated) = 11.5 W/kg

SAR(1 g) = 5.39 W/kg; SAR(10 g) = 2.47 W/kg

Maximum value of SAR (measured) = 6.02 W/kg



0 dB = 6.02 W/kg = 7.80 dBW/kg

20150822_SystemPerformanceCheck-D2450V2 SN 960

Frequency: 2450 MHz; Duty Cycle: 1:1

Head/Pin=100 mW 2/Z Scan (1x1x21): Measurement grid: dx=20mm, dy=20mm, dz=5mm
Maximum value of SAR (measured) = 9.29 W/kg

