

## Wi-Fi 2.4Ghz\_0823

Frequency: 2437 MHz; Duty Cycle: 1:1; Room Ambient Temperature: 24.0°C; Liquid Temperature: 23.0°C  
 Medium parameters used (interpolated):  $f = 2437$  MHz;  $\sigma = 1.979$  S/m;  $\epsilon_r = 52.458$ ;  $\rho = 1000$  kg/m<sup>3</sup>

DASY5 Configuration:

- Area Scan Setting: Find Secondary Maximum Within: 2.0 dB and with a peak SAR value greater than 0.0012W/kg
- Electronics: DAE4 Sn1447; Calibrated: 2014-08-25
- Probe: EX3DV4 - SN7313; ConvF(7.12, 7.12, 7.12); Calibrated: 2015-07-23;
- Sensor-Surface: 2mm (Mechanical Surface Detection)
- Phantom: SAM (20deg probe tilt) with CRP v5.0(Middle); Type: QD000P40CD; Serial: TP:xxxx

**Extremity Body/802.11b\_ch 6 SN:11085/Area Scan (7x7x1):** Measurement grid: dx=12mm, dy=12mm  
 Maximum value of SAR (measured) = 1.90 W/kg

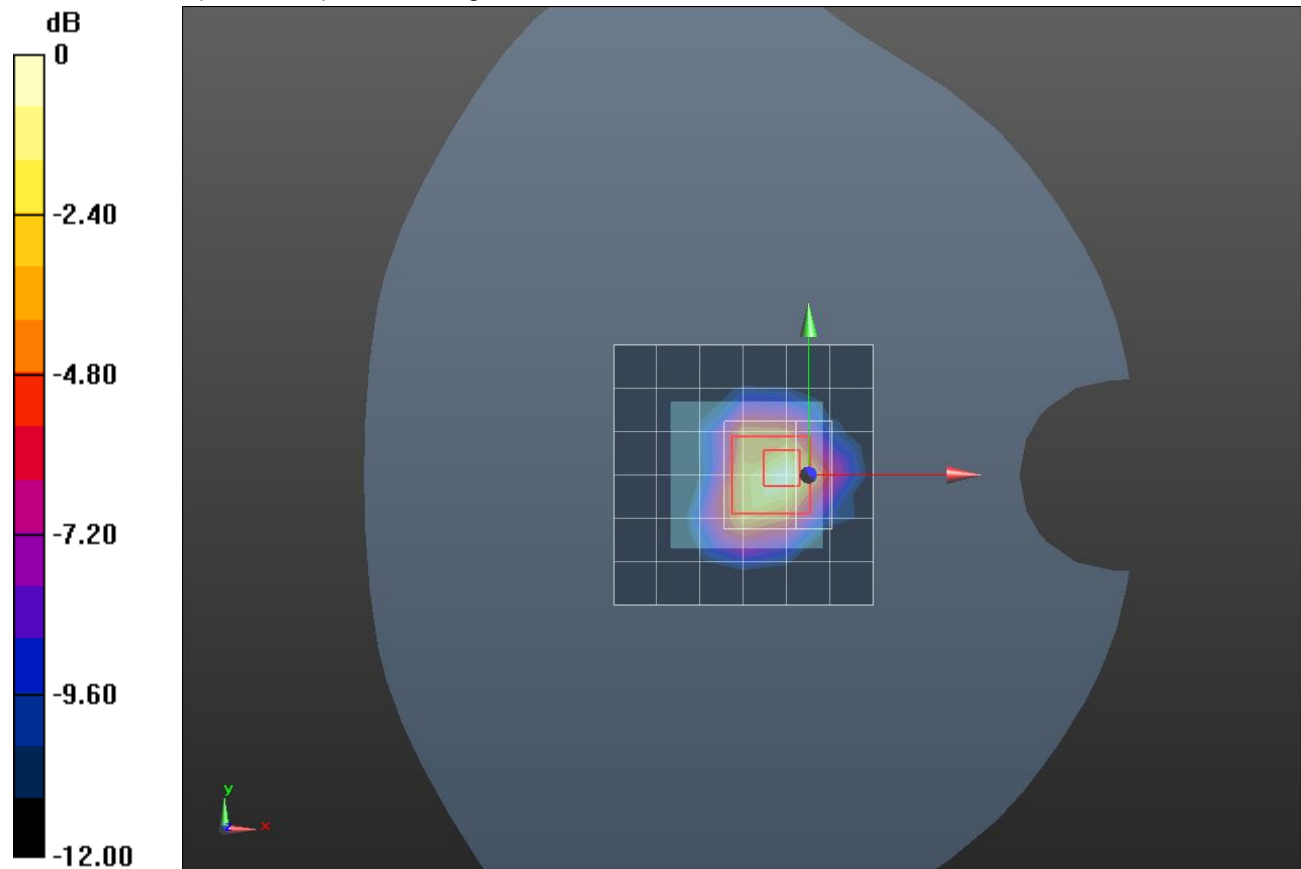
**Extremity Body/802.11b\_ch 6 SN:11085/Zoom Scan (7x7x7)/Cube 0:** Measurement grid: dx=5mm, dy=5mm, dz=5mm

Reference Value = 30.50 V/m; Power Drift = -0.05 dB

Peak SAR (extrapolated) = 3.09 W/kg

**SAR(1 g) = 1.24 W/kg; SAR(10 g) = 0.559 W/kg**

Maximum value of SAR (measured) = 1.87 W/kg



0 dB = 1.87 W/kg = 2.72 dBW/kg

## Wi-Fi 2.4Ghz\_0823

Frequency: 2437 MHz; Duty Cycle: 1:1; Room Ambient Temperature: 24.0°C; Liquid Temperature: 23.0°C  
 Medium parameters used (interpolated):  $f = 2437$  MHz;  $\sigma = 1.861$  S/m;  $\epsilon_r = 37.827$ ;  $\rho = 1000$  kg/m<sup>3</sup>

DASY5 Configuration:

- Area Scan Setting: Find Secondary Maximum Within: 2.0 dB and with a peak SAR value greater than 0.0012W/kg
- Electronics: DAE4 Sn1446; Calibrated: 2015-08-17
- Probe: EX3DV4 - SN7314; ConvF(7.23, 7.23, 7.23); Calibrated: 2014-08-27;
- Sensor-Surface: 2mm (Mechanical Surface Detection)
- Phantom: SAM Phantom CRP v5.0(Middle); Type: QD000P40CD; Serial: TP:1854

### Next-to-Mouth/Wi-Fi\_ 802.11b\_ch 6 PLS18 SN:110A9/Area Scan (7x7x1): Measurement grid:

$dx=12$ mm,  $dy=12$ mm

Maximum value of SAR (measured) = 0.0990 W/kg

### Next-to-Mouth/Wi-Fi\_ 802.11b\_ch 6 PLS18 SN:110A9/Zoom Scan (7x7x7)/Cube 0:

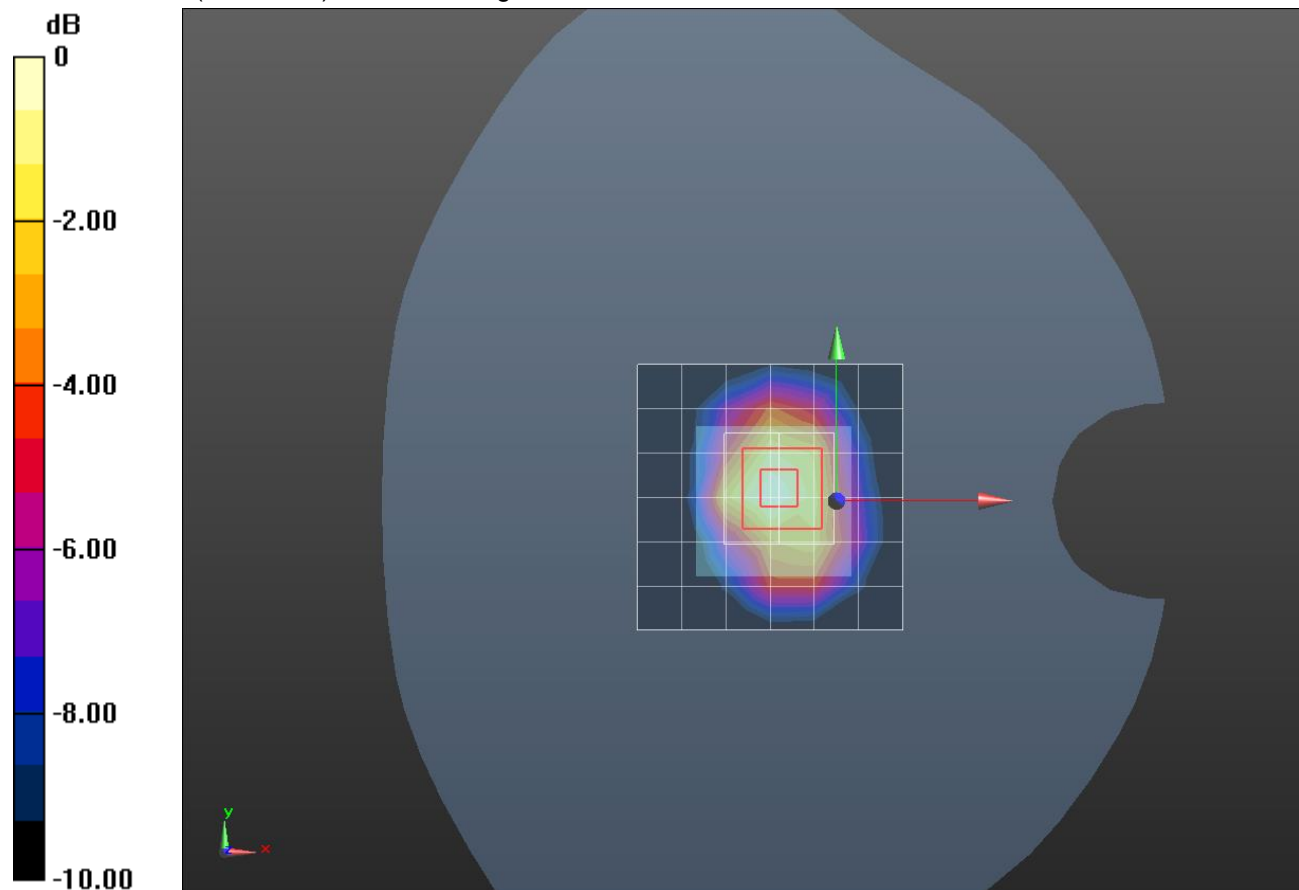
Measurement grid:  $dx=5$ mm,  $dy=5$ mm,  $dz=5$ mm

Reference Value = 6.661 V/m; Power Drift = 0.14 dB

Peak SAR (extrapolated) = 0.119 W/kg

**SAR(1 g) = 0.068 W/kg; SAR(10 g) = 0.034 W/kg**

Maximum value of SAR (measured) = 0.0965 W/kg



0 dB = 0.0965 W/kg = -10.15 dBW/kg

## Bluetooth

Frequency: 2402 MHz; Duty Cycle: 1:1.29033; Room Ambient Temperature: 24.0°C; Liquid Temperature: 23.0°C  
 Medium parameters used (interpolated):  $f = 2402$  MHz;  $\sigma = 1.944$  S/m;  $\epsilon_r = 52.541$ ;  $\rho = 1000$  kg/m<sup>3</sup>

DASY5 Configuration:

- Area Scan Setting: Find Secondary Maximum Within: 2.0 dB and with a peak SAR value greater than 0.0012W/kg
- Electronics: DAE4 Sn1447; Calibrated: 2014-08-25
- Probe: EX3DV4 - SN7313; ConvF(7.12, 7.12, 7.12); Calibrated: 2015-07-23;
- Sensor-Surface: 2mm (Mechanical Surface Detection)
- Phantom: SAM (20deg probe tilt) with CRP v5.0(Middle); Type: QD000P40CD; Serial: TP:xxxx

**Extremity Body/Bluetooth GFSK\_ ch 0/Area Scan (7x7x1):** Measurement grid: dx=12mm, dy=12mm  
 Maximum value of SAR (measured) = 0.438 W/kg

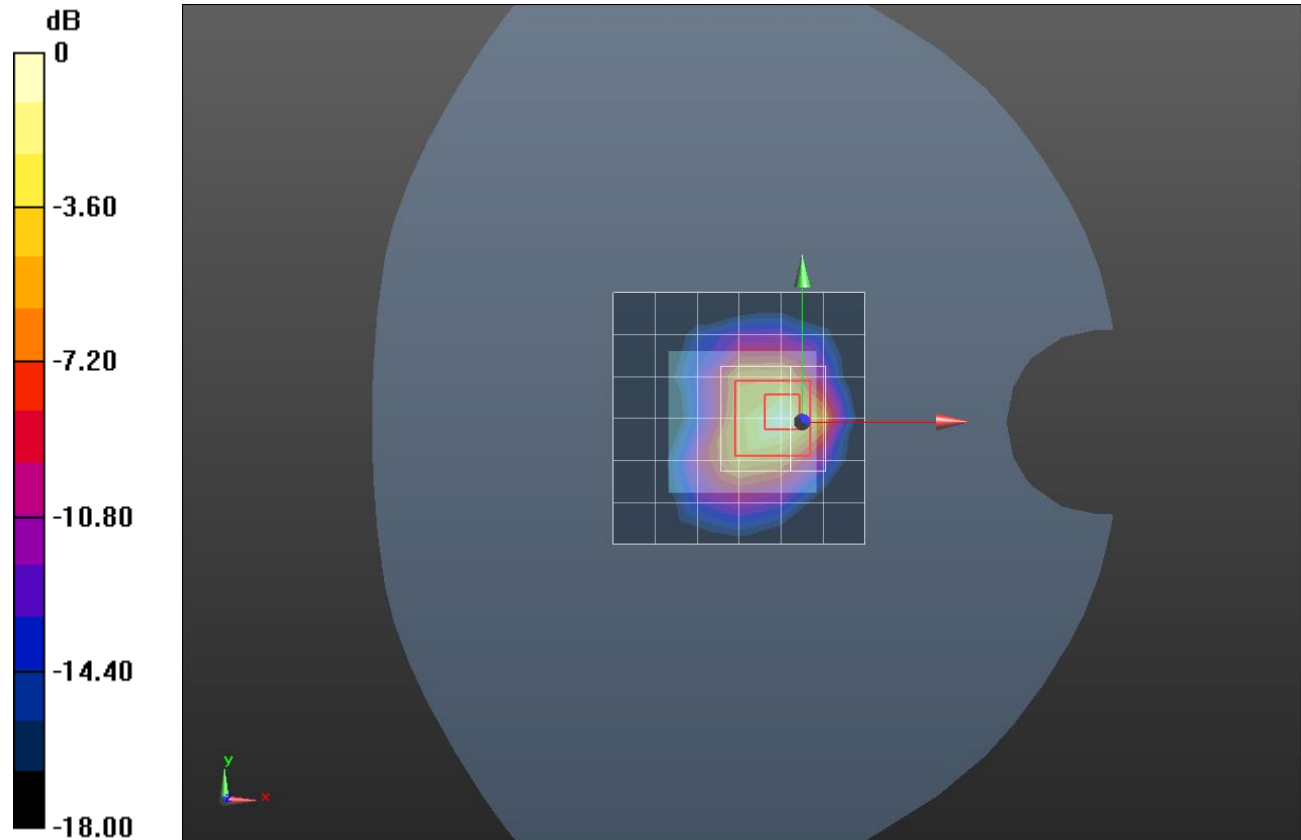
**Extremity Body/Bluetooth GFSK\_ ch 0/Zoom Scan (7x7x7)/Cube 0:** Measurement grid: dx=5mm, dy=5mm, dz=5mm

Reference Value = 14.69 V/m; Power Drift = 0.02 dB

Peak SAR (extrapolated) = 0.711 W/kg

**SAR(1 g) = 0.285 W/kg; SAR(10 g) = 0.125 W/kg**

Maximum value of SAR (measured) = 0.450 W/kg



0 dB = 0.450 W/kg = -3.47 dBW/kg

## Bluetooth

Frequency: 2402 MHz; Duty Cycle: 1:1.29033; Room Ambient Temperature: 24.0°C; Liquid Temperature: 23.0°C  
 Medium parameters used (interpolated):  $f = 2402$  MHz;  $\sigma = 1.78$  S/m;  $\epsilon_r = 38.119$ ;  $\rho = 1000$  kg/m<sup>3</sup>

DASY5 Configuration:

- Area Scan Setting: Find Secondary Maximum Within: 2.0 dB and with a peak SAR value greater than 0.0012W/kg
- Electronics: DAE4 Sn614; Calibrated: 2014-09-18
- Probe: EX3DV4 - SN7314; ConvF(7.23, 7.23, 7.23); Calibrated: 2014-08-27;
- Sensor-Surface: 2mm (Mechanical Surface Detection)
- Phantom: SAM Phantom CRP v5.0(Middle); Type: QD000P40CD; Serial: TP:1854

**Next-to-Mouth/Bluetooth GFSK\_ ch 0/Area Scan (7x7x1):** Measurement grid: dx=12mm, dy=12mm  
 Maximum value of SAR (measured) = 0.0220 W/kg

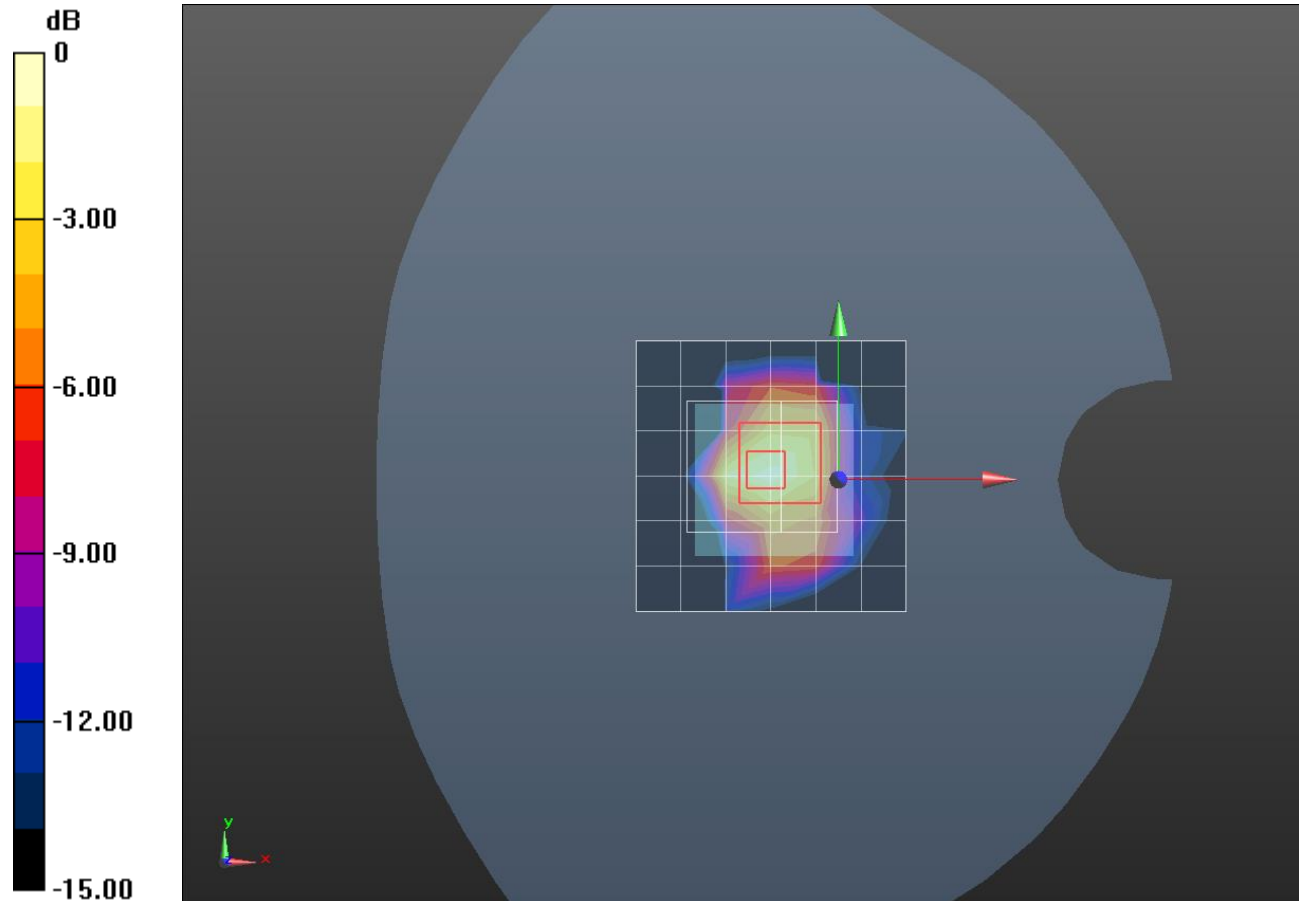
**Next-to-Mouth/Bluetooth GFSK\_ ch 0/Zoom Scan (9x8x7)/Cube 0:** Measurement grid: dx=5mm, dy=5mm, dz=5mm

Reference Value = 3.624 V/m; Power Drift = -0.19 dB

Peak SAR (extrapolated) = 0.0780 W/kg

**SAR(1 g) = 0.016 W/kg; SAR(10 g) = 0.00632 W/kg**

Maximum value of SAR (measured) = 0.0238 W/kg



0 dB = 0.0238 W/kg = -16.23 dBW/kg