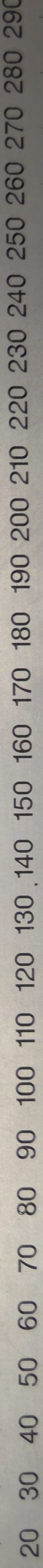
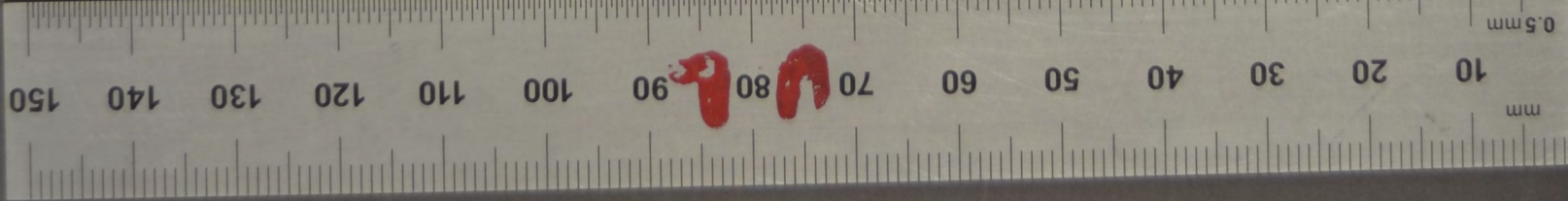
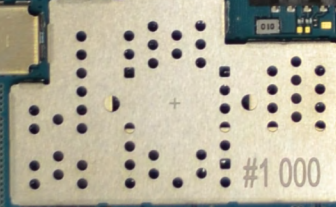
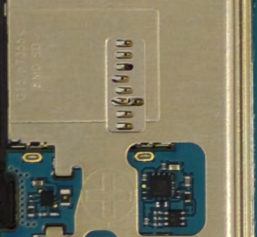
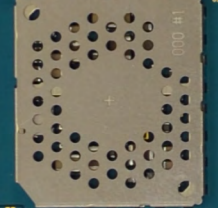


15120033



SM-P355/P350
SM-T355/T350

2015. 02. 02



SAMSUNG

CELL MADE IN MALAYSIA ASSEMBLED IN KOREA
BATTERIE FABRIQUE EN MALAISIE ASSEMBLE EN COREE
ENSAMBLADO EN COREA / MONTADO NA COREA
三星SDI有限公司为三星制造 / 韓國製造 / 韩国製造

Secondary Li-Ion Battery / 產品名稱: 二次鋰電池組 / 產品名: 锂离子電池 3.8V =
執行標準: GB/T18287-2013
Nominal Voltage / 標稱電壓: 3.8V =
Charge Voltage / 充電限制電壓 / 充電限制電壓: 4.35V =
Capacity / 額定電容量 / 容量: 4200 mAh 15.96 Wh
1ICP3/95/113

CE, RoHS, WEEE, REACH, and other regulatory symbols.

Model / 型號 / 型号: EB-BT355ABE
S/N: AAg216ZS7-B
製造日期 / 生产日期: 2015.02.16
Not for sale - C

SM-P355M

IMEI: 359502060007087

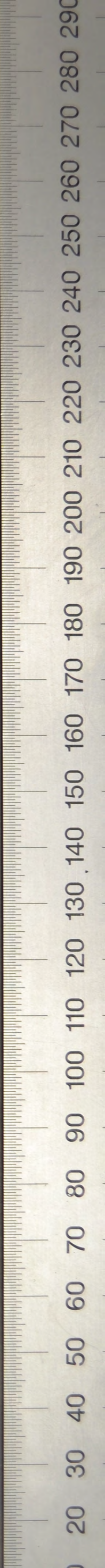
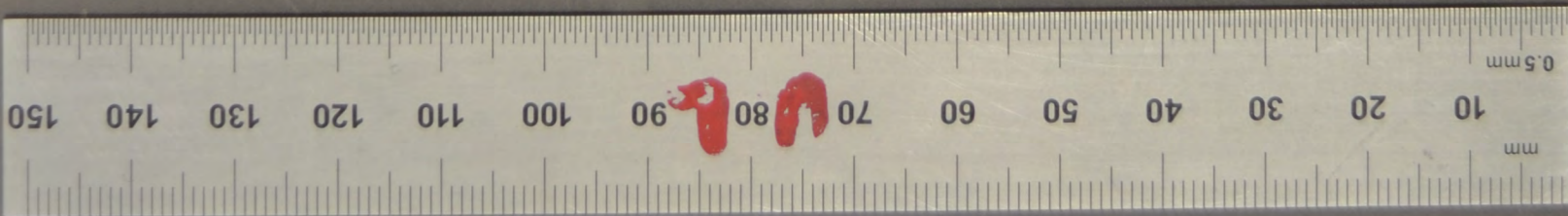
S/N: R32G202A2PL

16GB

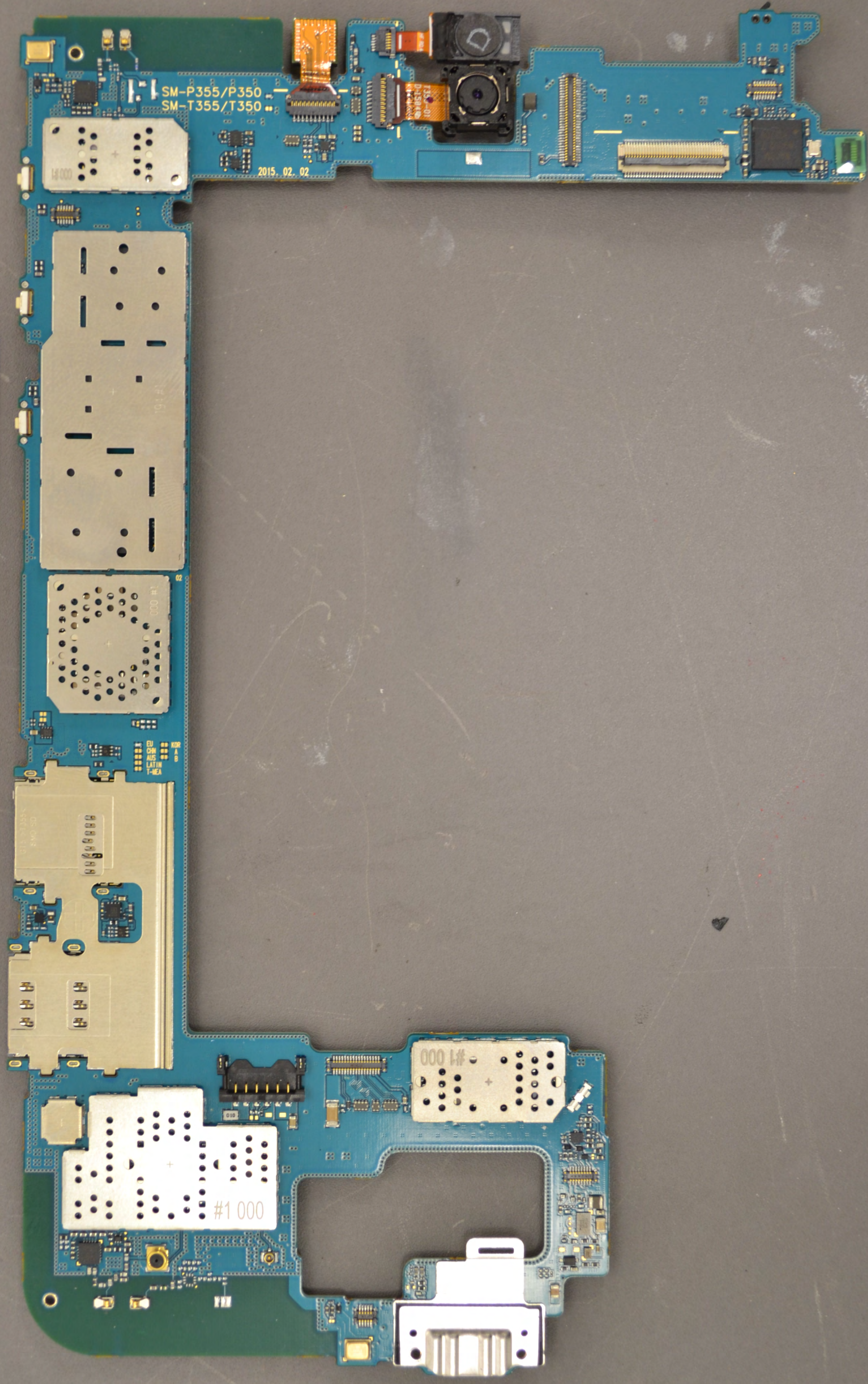
PULL(HANDS ONLY)

GT5 R3
BSE K1-L

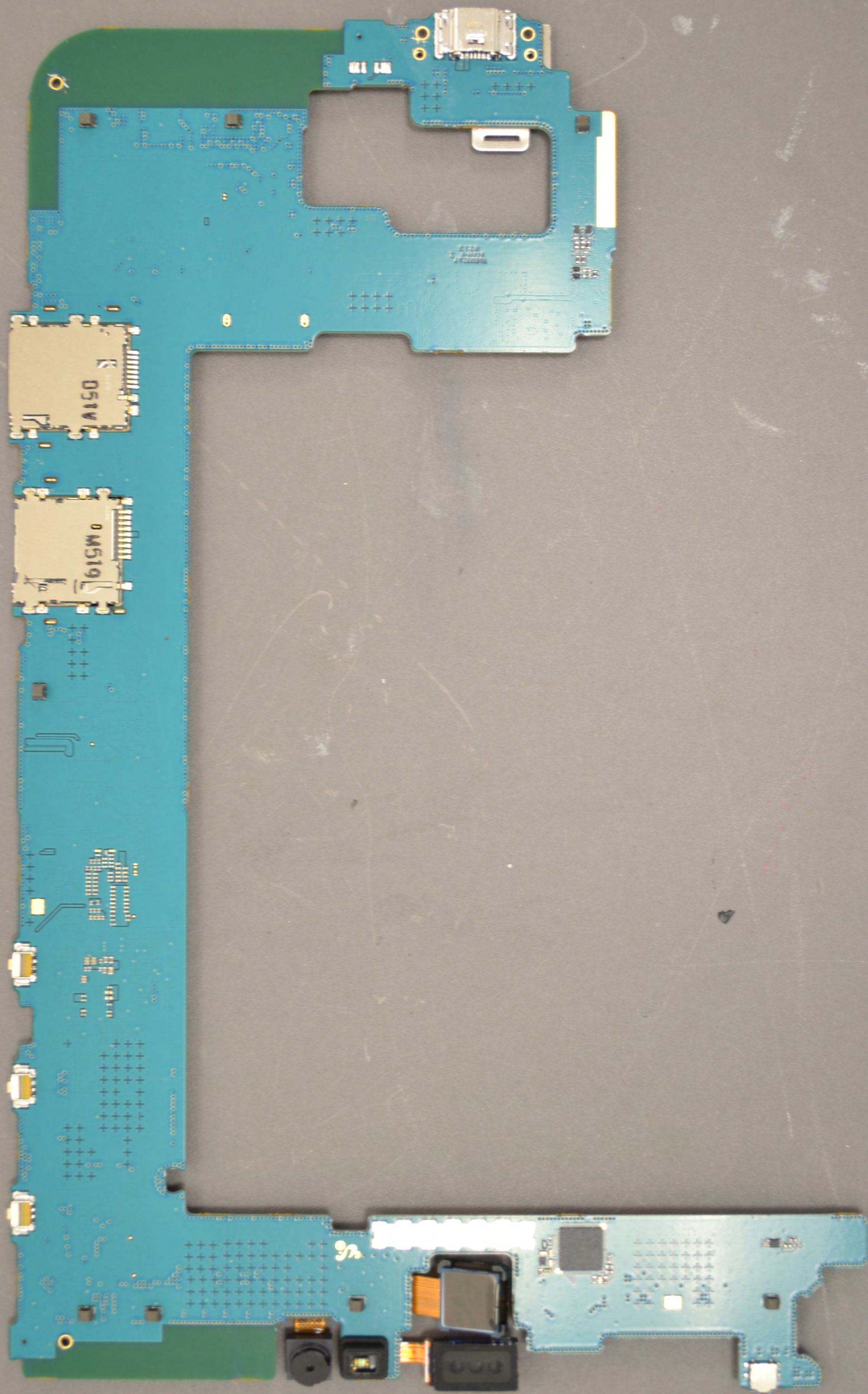
15120033



15120033



15120033



15120033

