

20170321_SystemPerformanceCheck-D5GHzV2 SN 1184

Frequency: 5800 MHz; Duty Cycle: 1:1; Room Ambient Temperature: 23.0°C; Liquid Temperature: 22.0°C
 Medium parameters used: $f = 5800 \text{ MHz}$; $\sigma = 5.216 \text{ S/m}$; $\epsilon_r = 34.602$; $\rho = 1000 \text{ kg/m}^3$

DASY5 Configuration:

- Area Scan Setting: Find Secondary Maximum Within: 2.0 dB and with a peak SAR value greater than 0.0012W/kg
- Electronics: DAE4 Sn1447; Calibrated: 2016-09-19
- Probe: EX3DV4 - SN7376; ConvF(4.51, 4.51, 4.51); Calibrated: 2016-08-30;
- Sensor-Surface: 1.4mm (Mechanical Surface Detection)
- Phantom: SAM (20deg probe tilt) with CRP v5.0_Back; Type: QD000P40CD; Serial: TP:1877

Head/5.8 GHz, Pin=100mW/Area Scan (7x7x1): Measurement grid: dx=10mm, dy=10mm

Maximum value of SAR (measured) = 21.4 W/kg

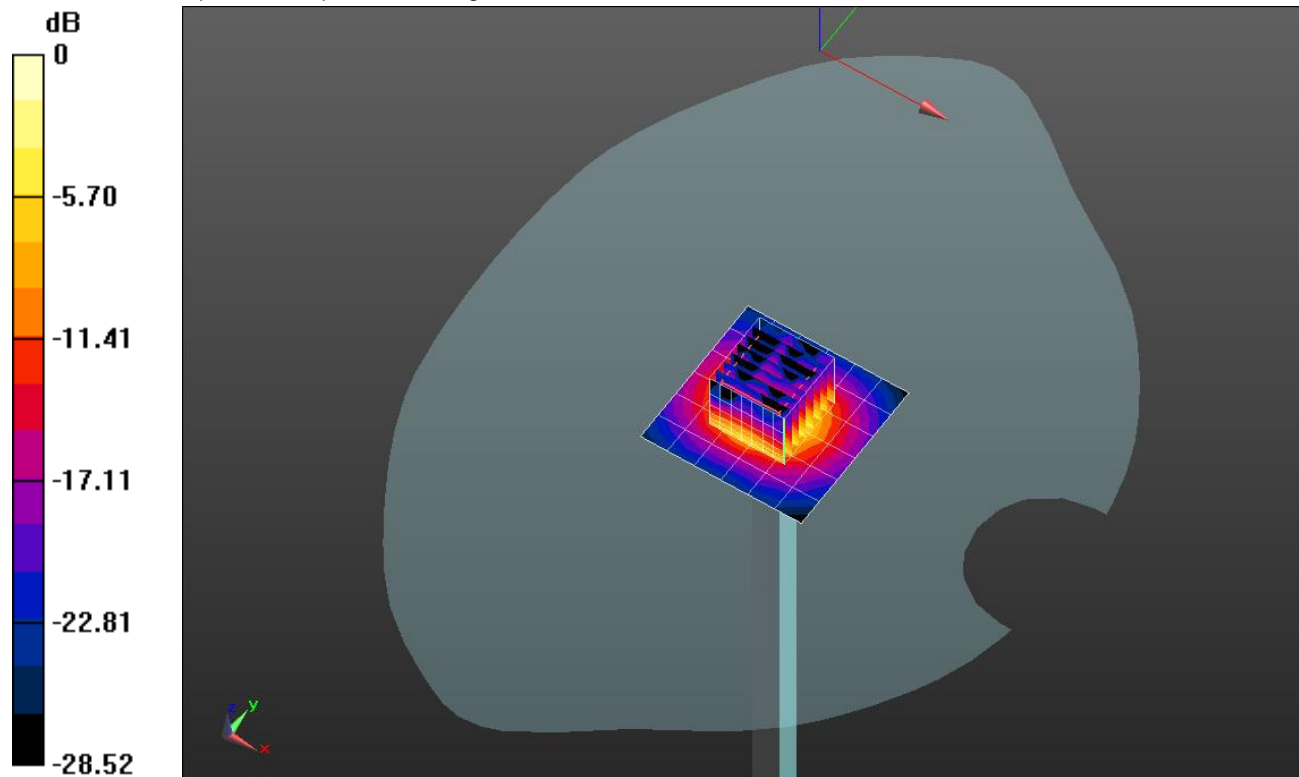
Head/5.8 GHz, Pin=100mW/Zoom Scan (8x8x7)/Cube 0: Measurement grid: dx=4mm, dy=4mm, dz=1.4mm

Reference Value = 72.55 V/m; Power Drift = 0.09 dB

Peak SAR (extrapolated) = 36.0 W/kg

SAR(1 g) = 8.42 W/kg; SAR(10 g) = 2.41 W/kg

Maximum value of SAR (measured) = 20.6 W/kg

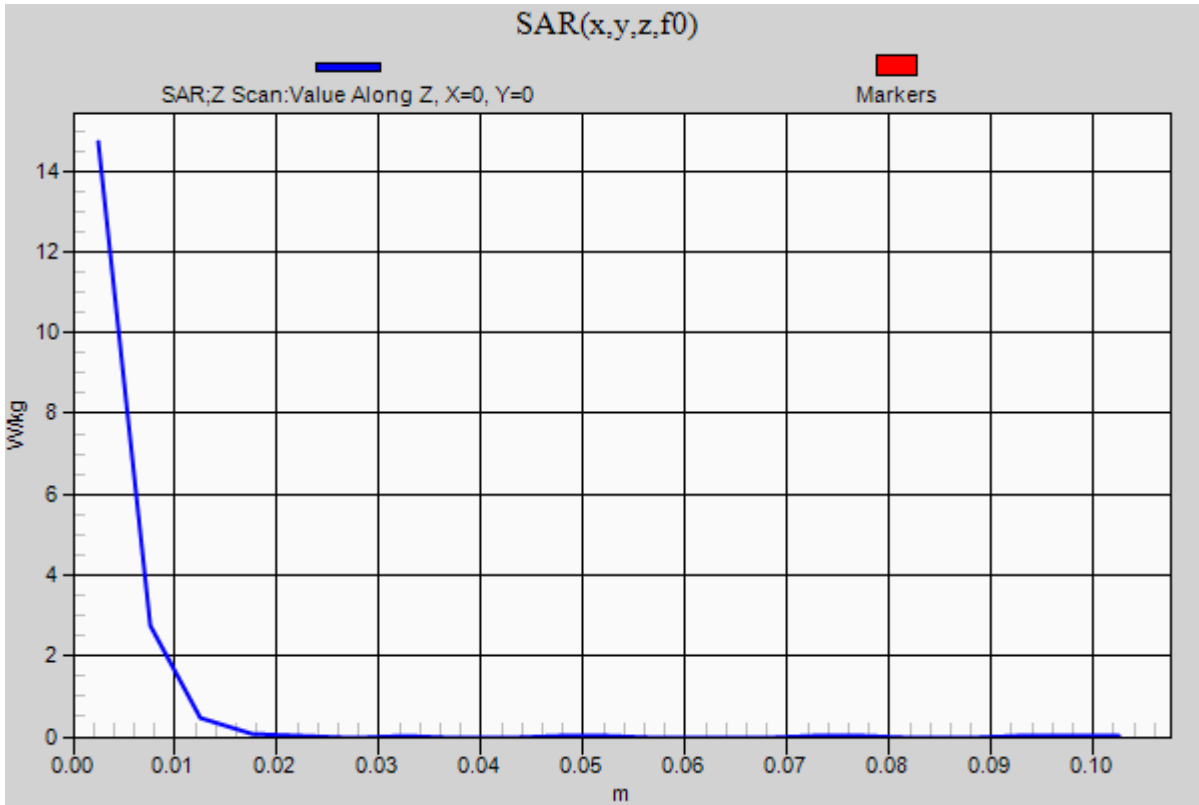


0 dB = 21.4 W/kg = 13.31 dBW/kg

20170321_SystemPerformanceCheck-D5GHzV2 SN 1184

Frequency: 5800 MHz; Duty Cycle: 1:1

Head/5.8 GHz, Pin=100mW/Z Scan (1x1x21): Measurement grid: dx=20mm, dy=20mm, dz=5mm
Maximum value of SAR (measured) = 14.7 W/kg



20170314_SystemPerformanceCheck-D835V2 SN 4d194

Frequency: 835 MHz; Duty Cycle: 1:1; Room Ambient Temperature: 23.0°C; Liquid Temperature: 22.0°C
 Medium parameters used: $f = 835 \text{ MHz}$; $\sigma = 1.014 \text{ S/m}$; $\epsilon_r = 54.512$; $\rho = 1000 \text{ kg/m}^3$

DASY5 Configuration:

- Area Scan Setting: Find Secondary Maximum Within: 2.0 dB and with a peak SAR value greater than 0.0012W/kg
- Electronics: DAE4 Sn1468; Calibrated: 2016-09-08
- Probe: EX3DV4 - SN7313; ConvF(9.81, 9.81, 9.81); Calibrated: 2017-01-30;
- Sensor-Surface: 2.5mm (Mechanical Surface Detection)
- Phantom: Triple Flat Phantom 5.1C; Type: QD 000 P51 CA; Serial: 1166

Body/Pin=100 mW/Area Scan (7x13x1): Measurement grid: dx=15mm, dy=15mm

Maximum value of SAR (measured) = 1.27 W/kg

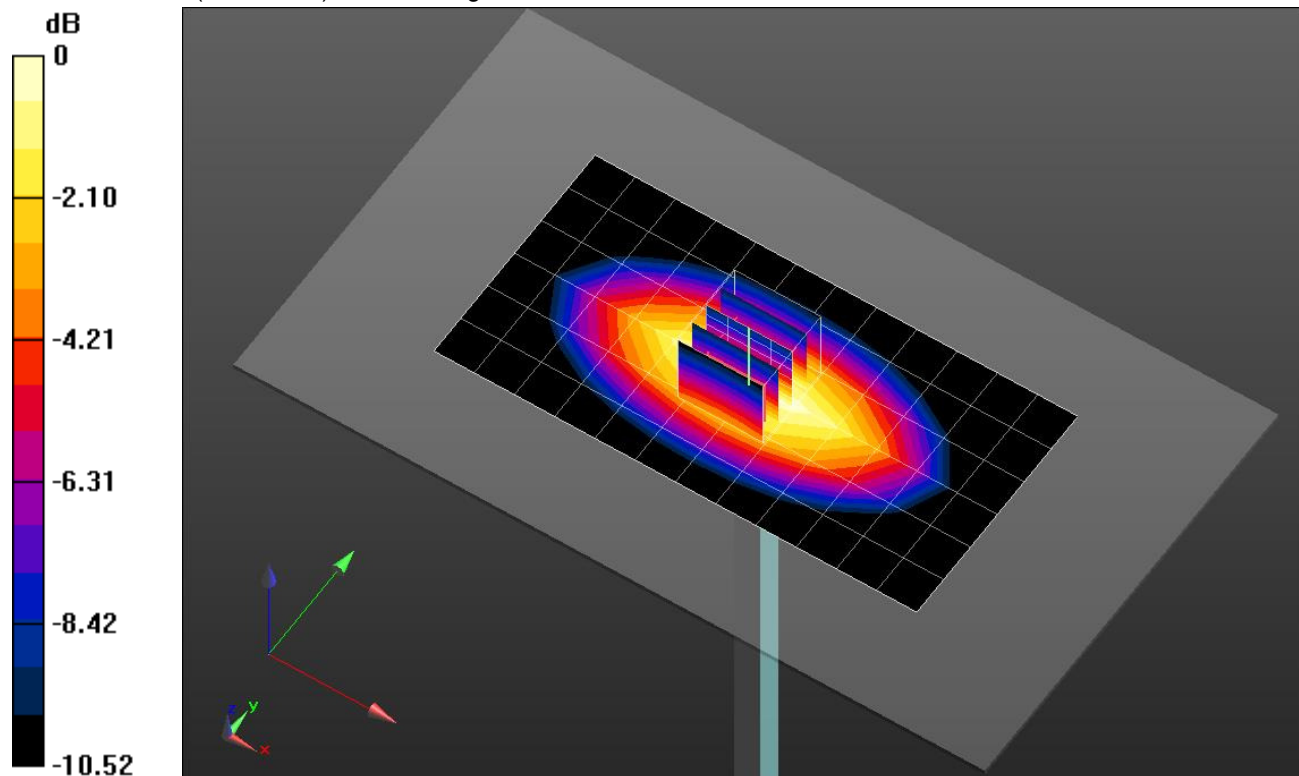
Body/Pin=100 mW/Zoom Scan (5x5x7)/Cube 0: Measurement grid: dx=8mm, dy=8mm, dz=5mm

Reference Value = 35.51 V/m; Power Drift = -0.00 dB

Peak SAR (extrapolated) = 1.51 W/kg

SAR(1 g) = 1.02 W/kg; SAR(10 g) = 0.672 W/kg

Maximum value of SAR (measured) = 1.24 W/kg

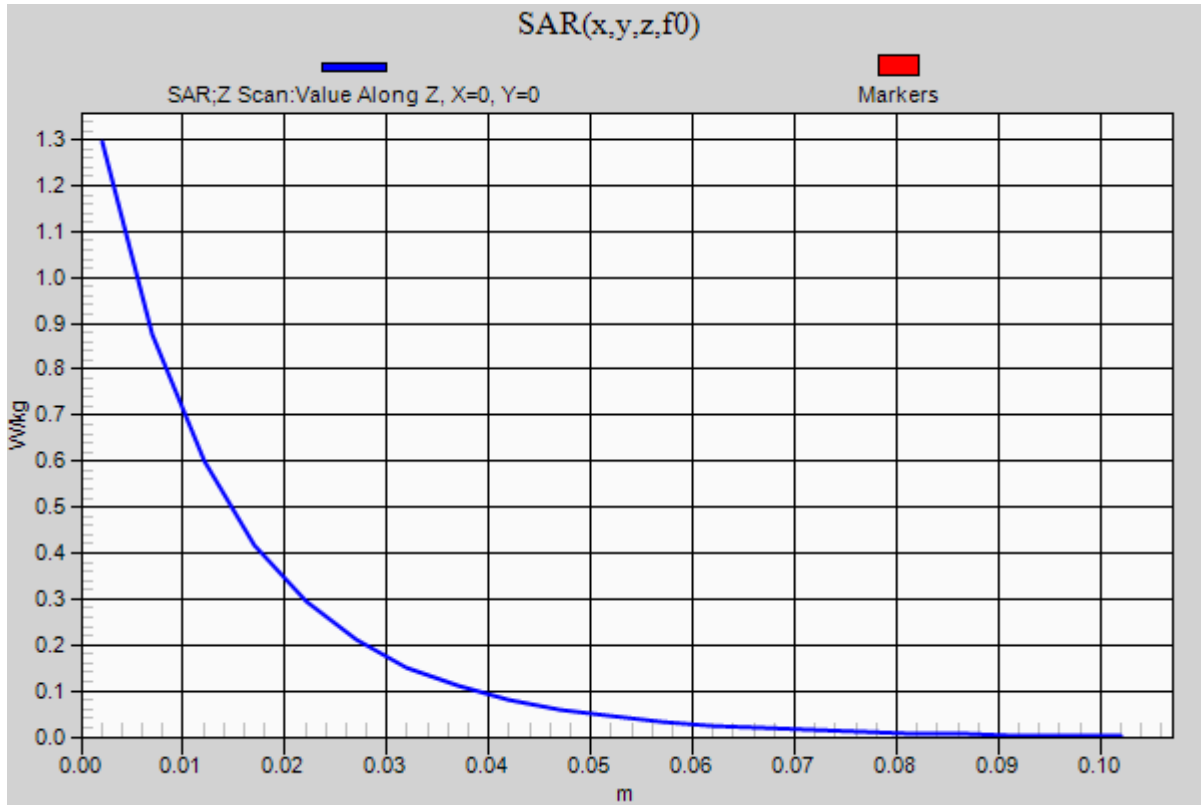


0 dB = 1.24 W/kg = 0.93 dBW/kg

20170314_SystemPerformanceCheck-D835V2 SN 4d194

Frequency: 835 MHz; Duty Cycle: 1:1

Body/Pin=100 mW/Z Scan (1x1x21): Measurement grid: dx=20mm, dy=20mm, dz=5mm
Maximum value of SAR (measured) = 1.29 W/kg



20170320_SystemPerformanceCheck-D2450V2 SN 939

Frequency: 2450 MHz; Duty Cycle: 1:1; Room Ambient Temperature: 23.0°C; Liquid Temperature: 22.0°C
 Medium parameters used: $f = 2450$ MHz; $\sigma = 1.974$ S/m; $\epsilon_r = 50.642$; $\rho = 1000$ kg/m³

DASY5 Configuration:

- Area Scan Setting: Find Secondary Maximum Within: 2.0 dB and with a peak SAR value greater than 0.0012W/kg
- Electronics: DAE4 Sn1468; Calibrated: 2016-09-08
- Probe: EX3DV4 - SN7313; ConvF(7.45, 7.45, 7.45); Calibrated: 2017-01-30;
- Sensor-Surface: 2.5mm (Mechanical Surface Detection)
- Phantom: Triple Flat Phantom 5.1C; Type: QD 000 P51 CA; Serial: 1166

Body/Pin=100 mW/Area Scan (7x7x1): Measurement grid: dx=12mm, dy=12mm

Maximum value of SAR (measured) = 6.57 W/kg

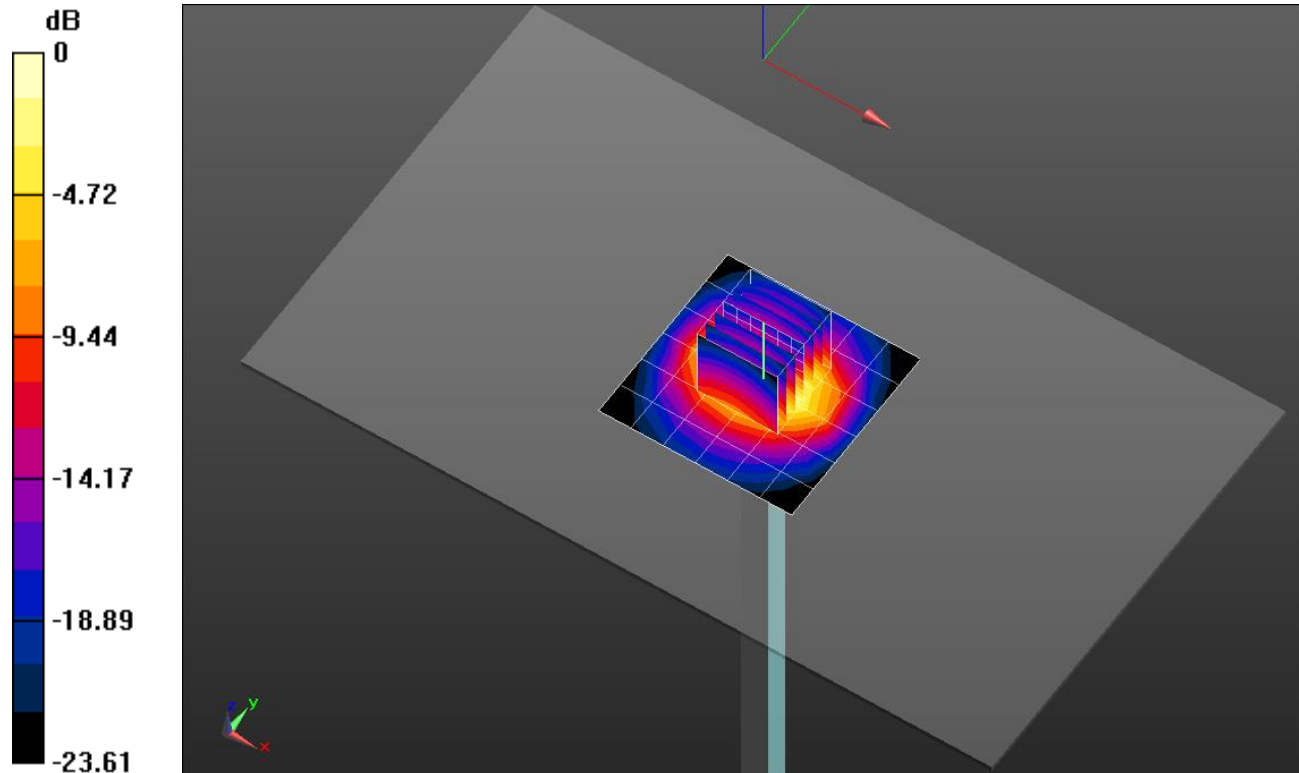
Body/Pin=100 mW/Zoom Scan (7x7x7)/Cube 0: Measurement grid: dx=5mm, dy=5mm, dz=5mm

Reference Value = 57.99 V/m; Power Drift = -0.05 dB

Peak SAR (extrapolated) = 10.3 W/kg

SAR(1 g) = 4.79 W/kg; SAR(10 g) = 2.16 W/kg

Maximum value of SAR (measured) = 6.65 W/kg

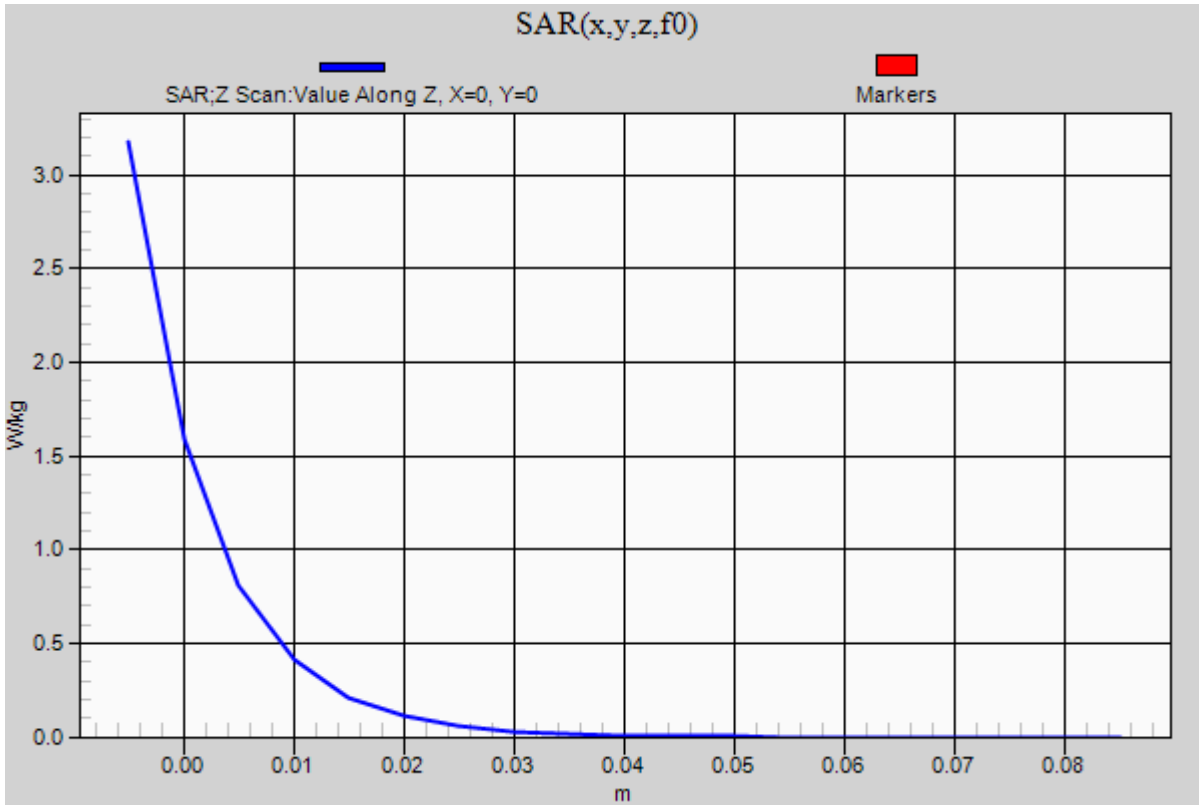


0 dB = 6.65 W/kg = 8.23 dBW/kg

20170320_SystemPerformanceCheck-D2450V2 SN 939

Frequency: 2450 MHz; Duty Cycle: 1:1

Body/Pin=100 mW/Z Scan (1x1x21): Measurement grid: dx=20mm, dy=20mm, dz=5mm
Maximum value of SAR (measured) = 3.17 W/kg



20170327_SystemPerformanceCheck-D1900V2 SN 5d190

Frequency: 1900 MHz; Duty Cycle: 1:1; Room Ambient Temperature: 23.0°C; Liquid Temperature: 22.0°C
 Medium parameters used: $f = 1900$ MHz; $\sigma = 1.441$ S/m; $\epsilon_r = 39.138$; $\rho = 1000$ kg/m³

DASY5 Configuration:

- Area Scan Setting: Find Secondary Maximum Within: 2.0 dB and with a peak SAR value greater than 0.0012W/kg
- Electronics: DAE4 Sn1494; Calibrated: 2016-07-18
- Probe: EX3DV4 - SN7314; ConvF(8.25, 8.25, 8.25); Calibrated: 2016-09-27;
- Sensor-Surface: 2.5mm (Mechanical Surface Detection)
- Phantom: SAM Phantom CRP v5.0(Middle); Type: QD000P40CD; Serial: TP:1854

Head/Pin=100 mW/Area Scan (7x7x1): Measurement grid: dx=15mm, dy=15mm

Maximum value of SAR (measured) = 4.89 W/kg

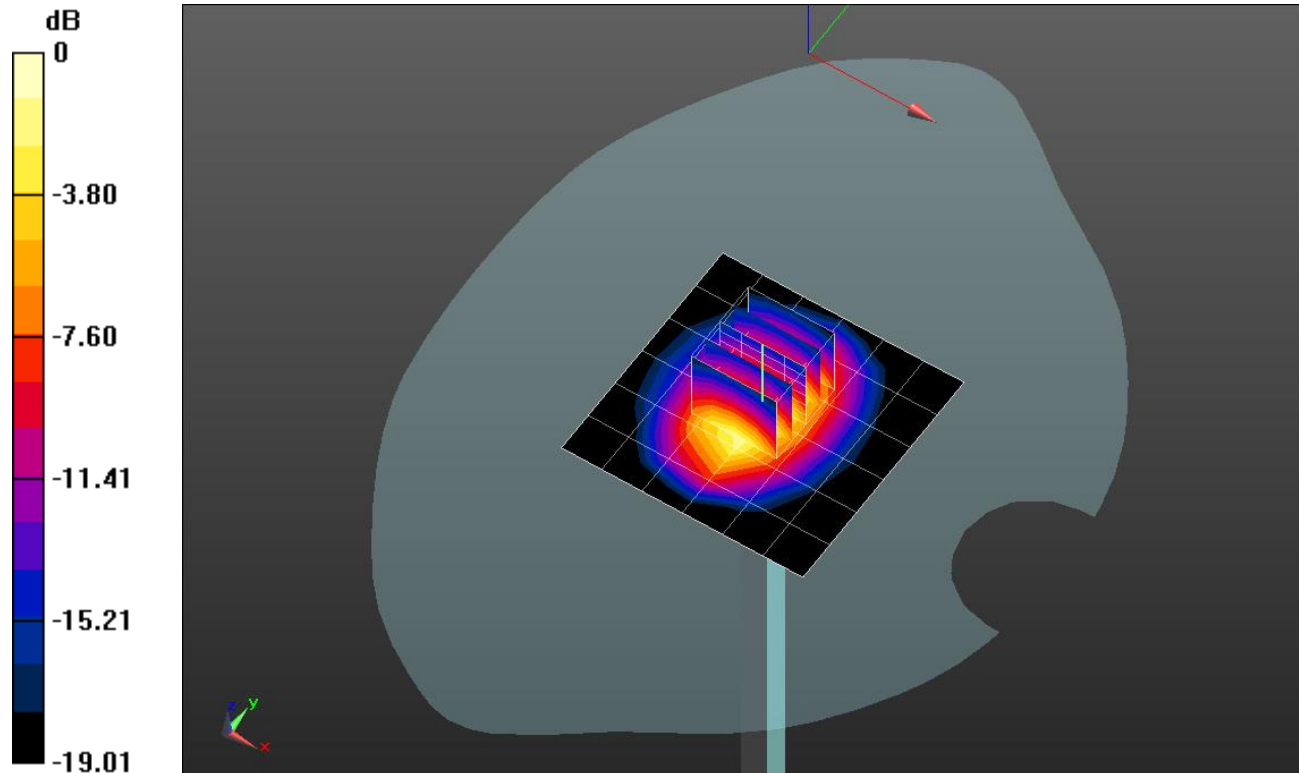
Head/Pin=100 mW/Zoom Scan (5x5x7)/Cube 0: Measurement grid: dx=8mm, dy=8mm, dz=5mm

Reference Value = 58.43 V/m; Power Drift = 0.08 dB

Peak SAR (extrapolated) = 7.10 W/kg

SAR(1 g) = 3.8 W/kg; SAR(10 g) = 1.96 W/kg

Maximum value of SAR (measured) = 5.12 W/kg



0 dB = 5.12 W/kg = 7.09 dBW/kg

20170327_SystemPerformanceCheck-D1900V2 SN 5d190

Frequency: 1900 MHz; Duty Cycle: 1:1

Head/Pin=100 mW/Z Scan (1x1x21): Measurement grid: dx=20mm, dy=20mm, dz=5mm
Maximum value of SAR (measured) = 4.88 W/kg

