

**20180123\_SystemPerformanceCheck-D835V2 SN 4d194**

Frequency: 835 MHz; Duty Cycle: 1:1; Room Ambient Temperature: 23.0°C; Liquid Temperature: 22.0°C  
Medium parameters used:  $f = 835 \text{ MHz}$ ;  $\sigma = 0.987 \text{ S/m}$ ;  $\epsilon_r = 53.202$ ;  $\rho = 1000 \text{ kg/m}^3$

DASY5 Configuration:

- Area Scan Setting: Find Secondary Maximum Within: 2.0 dB and with a peak SAR value greater than 0.0012W/kg
- Averaged Fast SAR: Polynomial fit
- Electronics: DAE4 Sn1468; Calibrated: 2017-08-22
- Probe: EX3DV4 - SN7376; ConvF(10.1, 10.1, 10.1); Calibrated: 2017-08-22;
- Sensor-Surface: 2.5mm (Mechanical Surface Detection)
- Phantom: Triple Flat Phantom 5.1C; Type: QD 000 P51 CA; Serial: 1166

**Body/Pin=100 mW/Area Scan (5x13x1):** Measurement grid: dx=15mm, dy=15mm

Maximum value of SAR (measured) = 1.19 W/kg

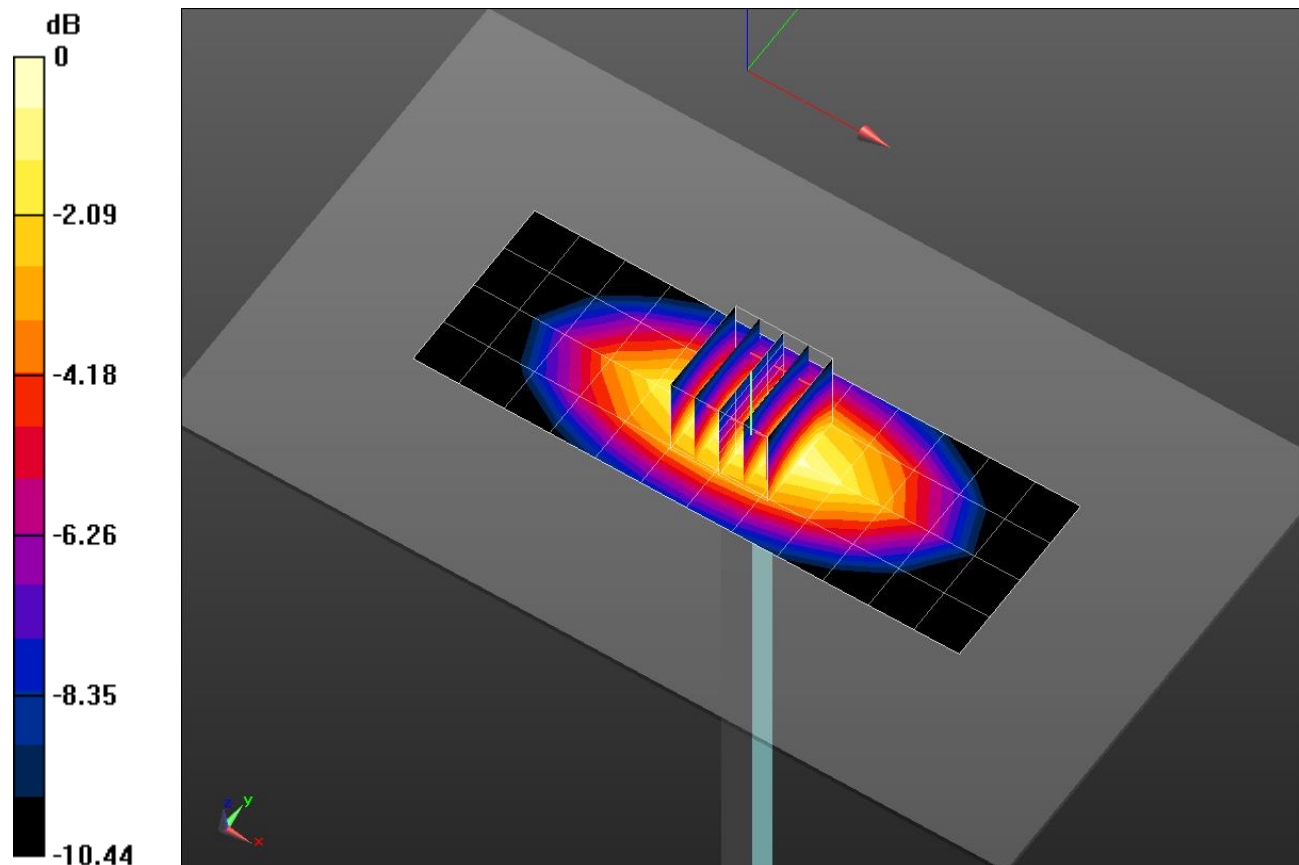
**Body/Pin=100 mW/Zoom Scan (5x5x7)/Cube 0:** Measurement grid: dx=8mm, dy=8mm, dz=5mm

Reference Value = 35.52 V/m; Power Drift = -0.01 dB

Peak SAR (extrapolated) = 1.47 W/kg

**SAR(1 g) = 0.998 W/kg; SAR(10 g) = 0.656 W/kg**

Maximum value of SAR (measured) = 1.21 W/kg

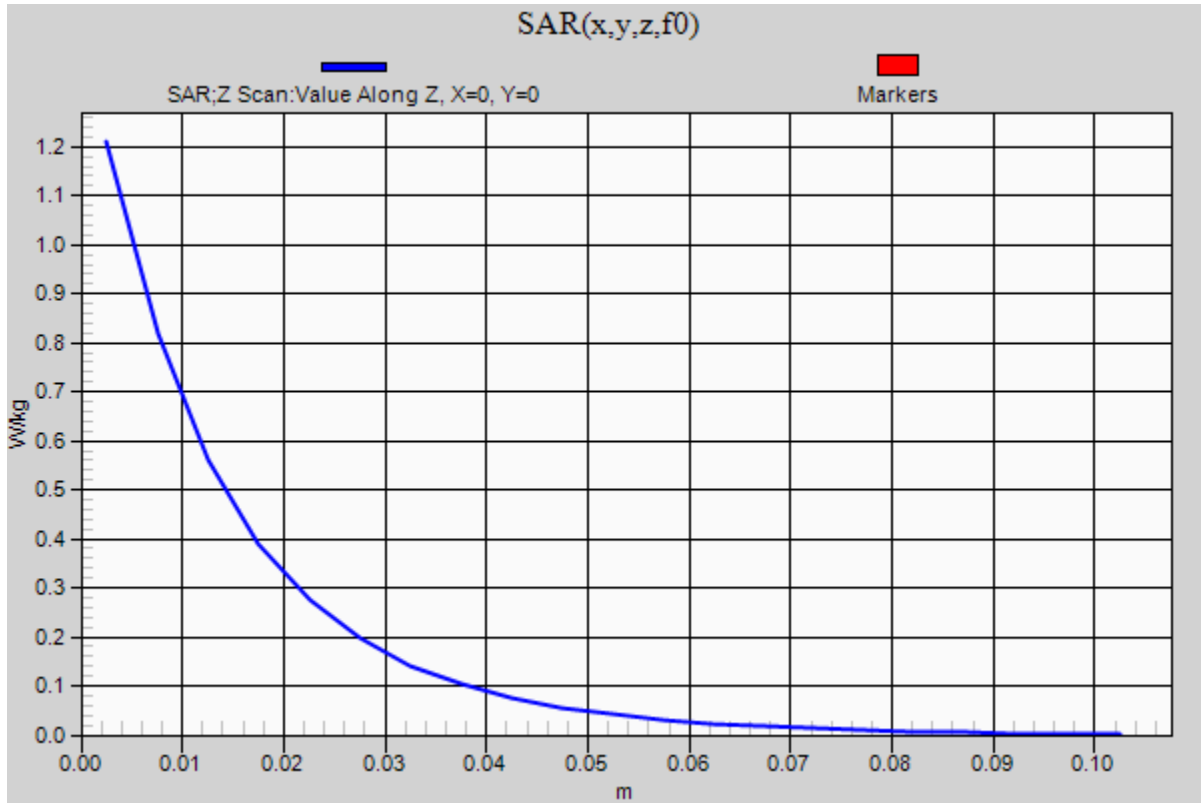


0 dB = 1.21 W/kg = 0.83 dBW/kg

### 20180123\_SystemPerformanceCheck-D835V2 SN 4d194

Frequency: 835 MHz; Duty Cycle: 1:1

**Body/Pin=100 mW/Z Scan (1x1x21):** Measurement grid: dx=20mm, dy=20mm, dz=5mm  
Maximum value of SAR (measured) = 1.21 W/kg



## 20180129\_SystemPerformanceCheck-D750V2 SN 1122

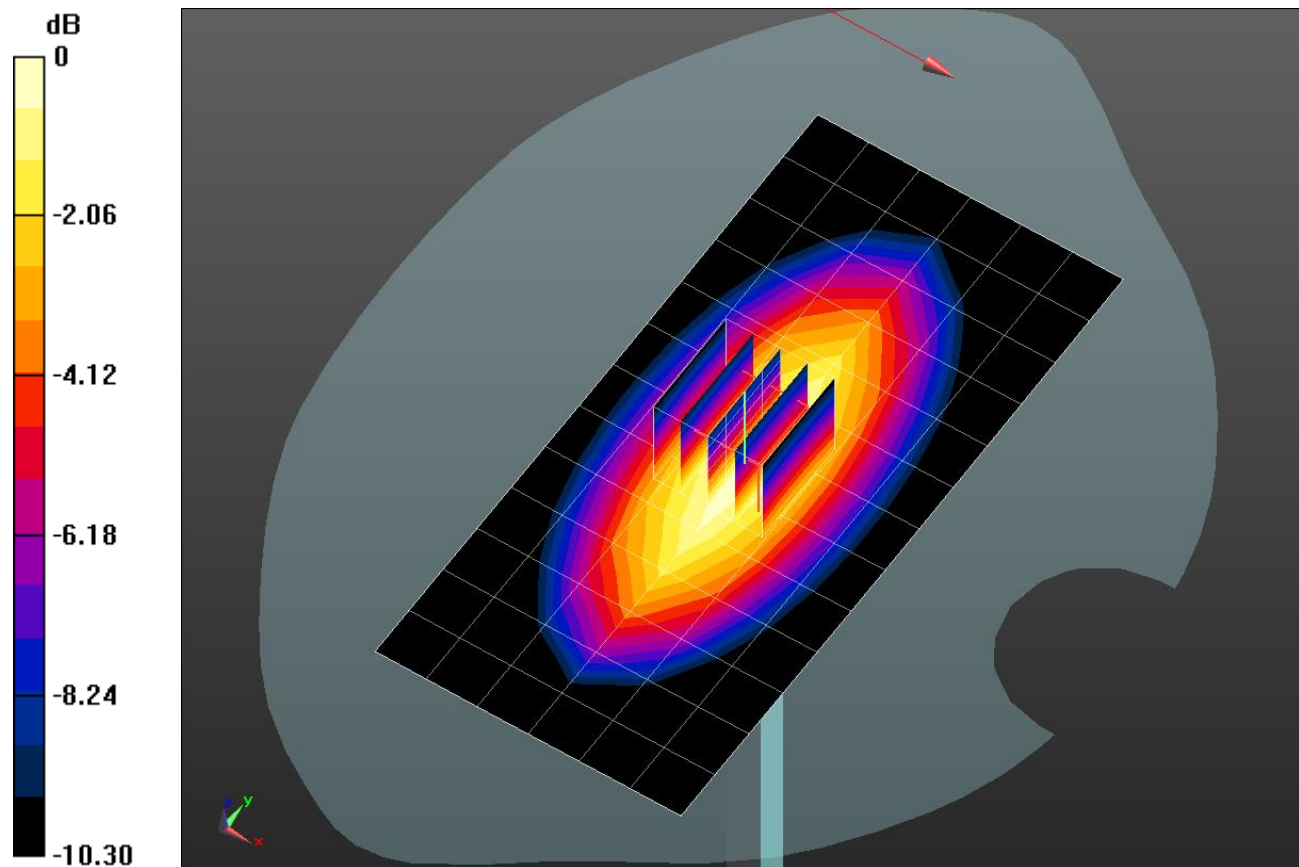
Frequency: 750 MHz; Duty Cycle: 1:1; Room Ambient Temperature: 23.0°C; Liquid Temperature: 22.0°C  
 Medium parameters used:  $f = 750 \text{ MHz}$ ;  $\sigma = 0.9 \text{ S/m}$ ;  $\epsilon_r = 41.901$ ;  $\rho = 1000 \text{ kg/m}^3$

DASY5 Configuration:

- Area Scan Setting: Find Secondary Maximum Within: 2.0 dB and with a peak SAR value greater than 0.0012W/kg
- Averaged Fast SAR: Polynomial fit
- Electronics: DAE4 Sn1468; Calibrated: 2017-08-22
- Probe: EX3DV4 - SN7376; ConvF(10.82, 10.82, 10.82); Calibrated: 2017-08-22;
- Sensor-Surface: 2.5mm (Mechanical Surface Detection)
- Phantom: SAM (20deg probe tilt) with CRP v5.0\_Back; Type: QD000P40CD; Serial: TP:1882

**Head/Pin=100 mW/Area Scan (7x14x1):** Measurement grid: dx=15mm, dy=15mm  
 Maximum value of SAR (measured) = 0.932 W/kg

**Head/Pin=100 mW/Zoom Scan (5x5x7)/Cube 0:** Measurement grid: dx=8mm, dy=8mm, dz=5mm  
 Reference Value = 33.11 V/m; Power Drift = -0.07 dB  
 Peak SAR (extrapolated) = 1.16 W/kg  
**SAR(1 g) = 0.781 W/kg; SAR(10 g) = 0.517 W/kg**  
 Maximum value of SAR (measured) = 0.949 W/kg

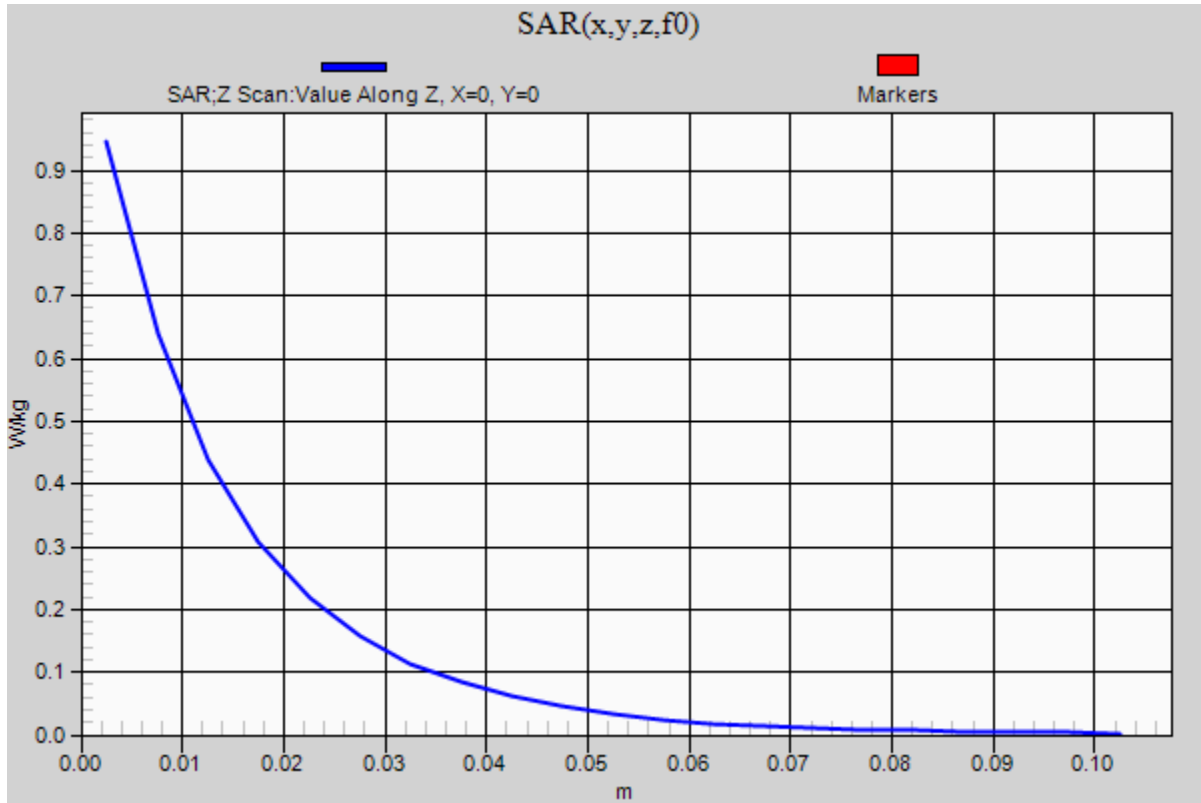


0 dB = 0.949 W/kg = -0.23 dBW/kg

### 20180129\_SystemPerformanceCheck-D750V2 SN 1122

Frequency: 750 MHz; Duty Cycle: 1:1

**Head/Pin=100 mW/Z Scan (1x1x21):** Measurement grid: dx=20mm, dy=20mm, dz=5mm  
Maximum value of SAR (measured) = 0.945 W/kg



## 20180201\_SystemPerformanceCheck-D1750V2 SN 1125

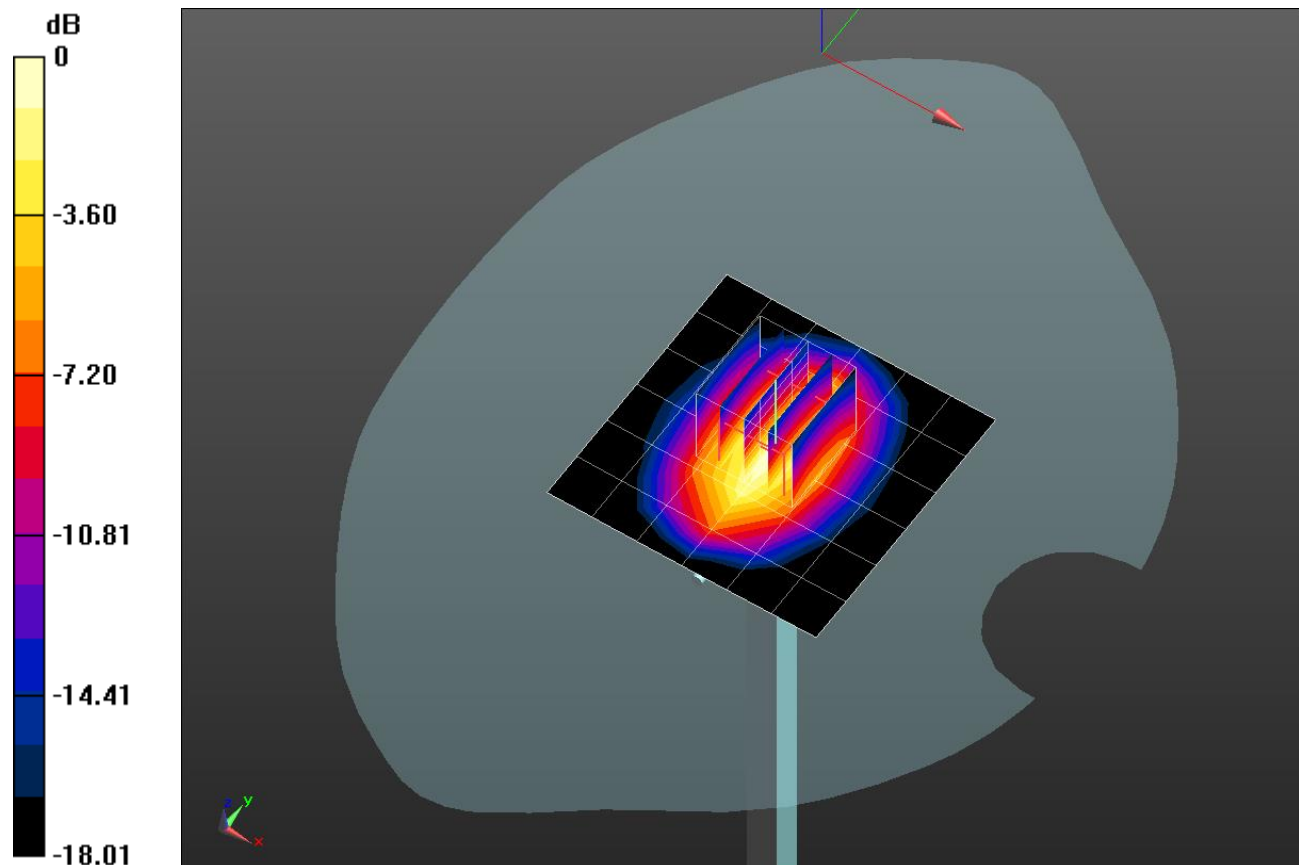
Frequency: 1750 MHz; Duty Cycle: 1:1; Room Ambient Temperature: 23.0°C; Liquid Temperature: 22.0°C  
 Medium parameters used:  $f = 1750 \text{ MHz}$ ;  $\sigma = 1.334 \text{ S/m}$ ;  $\epsilon_r = 39.754$ ;  $\rho = 1000 \text{ kg/m}^3$

DASY5 Configuration:

- Area Scan Setting: Find Secondary Maximum Within: 2.0 dB and with a peak SAR value greater than 0.0012W/kg
- Averaged Fast SAR: Polynomial fit
- Electronics: DAE4 Sn1468; Calibrated: 2017-08-22
- Probe: EX3DV4 - SN7376; ConvF(8.75, 8.75, 8.75); Calibrated: 2017-08-22;
- Sensor-Surface: 2.5mm (Mechanical Surface Detection)
- Phantom: SAM (20deg probe tilt) with CRP v5.0\_Back; Type: QD000P40CD; Serial: TP:1882

**Head/Pin=100 mW/Area Scan (7x7x1):** Measurement grid: dx=15mm, dy=15mm  
 Maximum value of SAR (measured) = 4.69 W/kg

**Head/Pin=100 mW/Zoom Scan (5x5x7)/Cube 0:** Measurement grid: dx=8mm, dy=8mm, dz=5mm  
 Reference Value = 59.90 V/m; Power Drift = -0.01 dB  
 Peak SAR (extrapolated) = 6.39 W/kg  
**SAR(1 g) = 3.51 W/kg; SAR(10 g) = 1.84 W/kg**  
 Maximum value of SAR (measured) = 4.68 W/kg

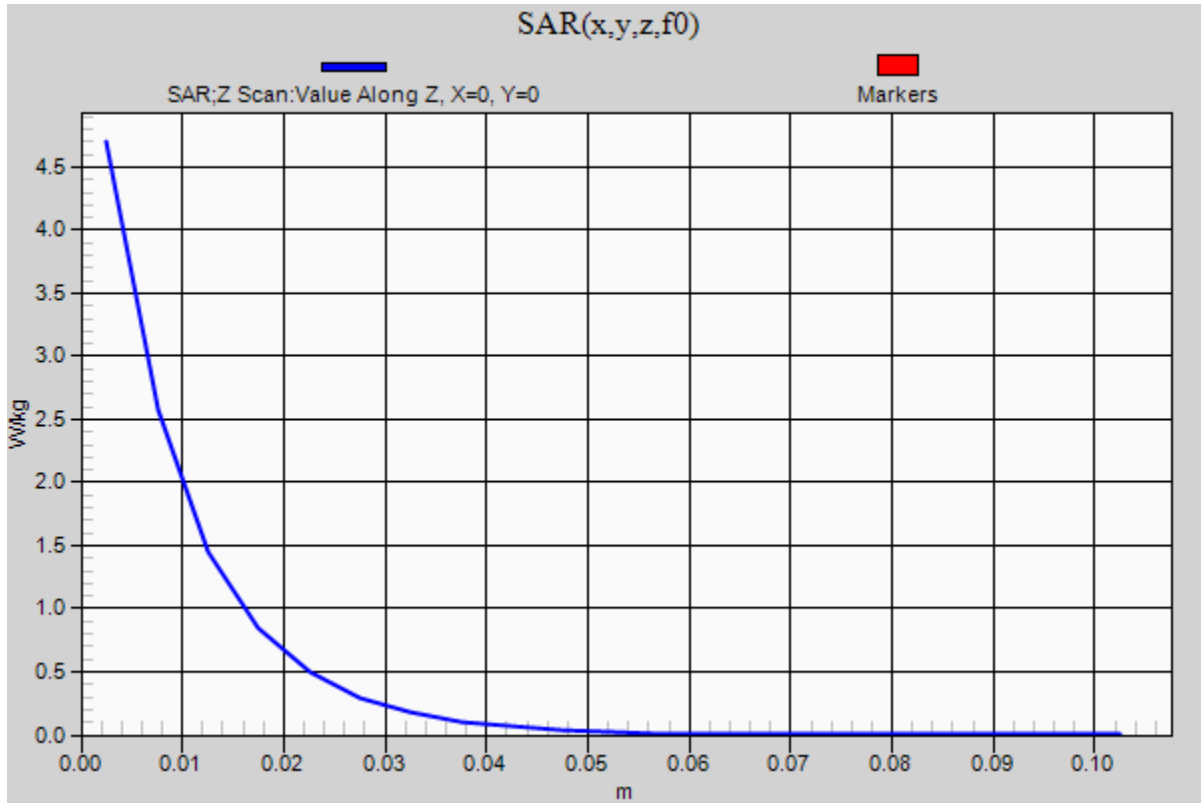


0 dB = 4.68 W/kg = 6.70 dBW/kg

### 20180201\_SystemPerformanceCheck-D1750V2 SN 1125

Frequency: 1750 MHz; Duty Cycle: 1:1

**Head/Pin=100 mW/Z Scan (1x1x21):** Measurement grid: dx=20mm, dy=20mm, dz=5mm  
Maximum value of SAR (measured) = 4.70 W/kg



## 20180129\_SystemPerformanceCheck-D1900V2 SN 5d199

Frequency: 1900 MHz; Duty Cycle: 1:1; Room Ambient Temperature: 23.0°C; Liquid Temperature: 22.0°C  
 Medium parameters used:  $f = 1900 \text{ MHz}$ ;  $\sigma = 1.578 \text{ S/m}$ ;  $\epsilon_r = 53.191$ ;  $\rho = 1000 \text{ kg/m}^3$

DASY5 Configuration:

- Area Scan Setting: Find Secondary Maximum Within: 2.0 dB and with a peak SAR value greater than 0.0012W/kg
- Averaged Fast SAR: Polynomial fit
- Electronics: DAE4 Sn1494; Calibrated: 2017-07-20
- Probe: EX3DV4 - SN7314; ConvF(8, 8, 8); Calibrated: 2017-09-28;
- Sensor-Surface: 2.5mm (Mechanical Surface Detection)
- Phantom: ELI v6.0; Type: QDOVA003AA; Serial: TP:2005

**Body/Pin=100 mW/Area Scan (7x7x1):** Measurement grid: dx=15mm, dy=15mm

Maximum value of SAR (measured) = 5.55 W/kg

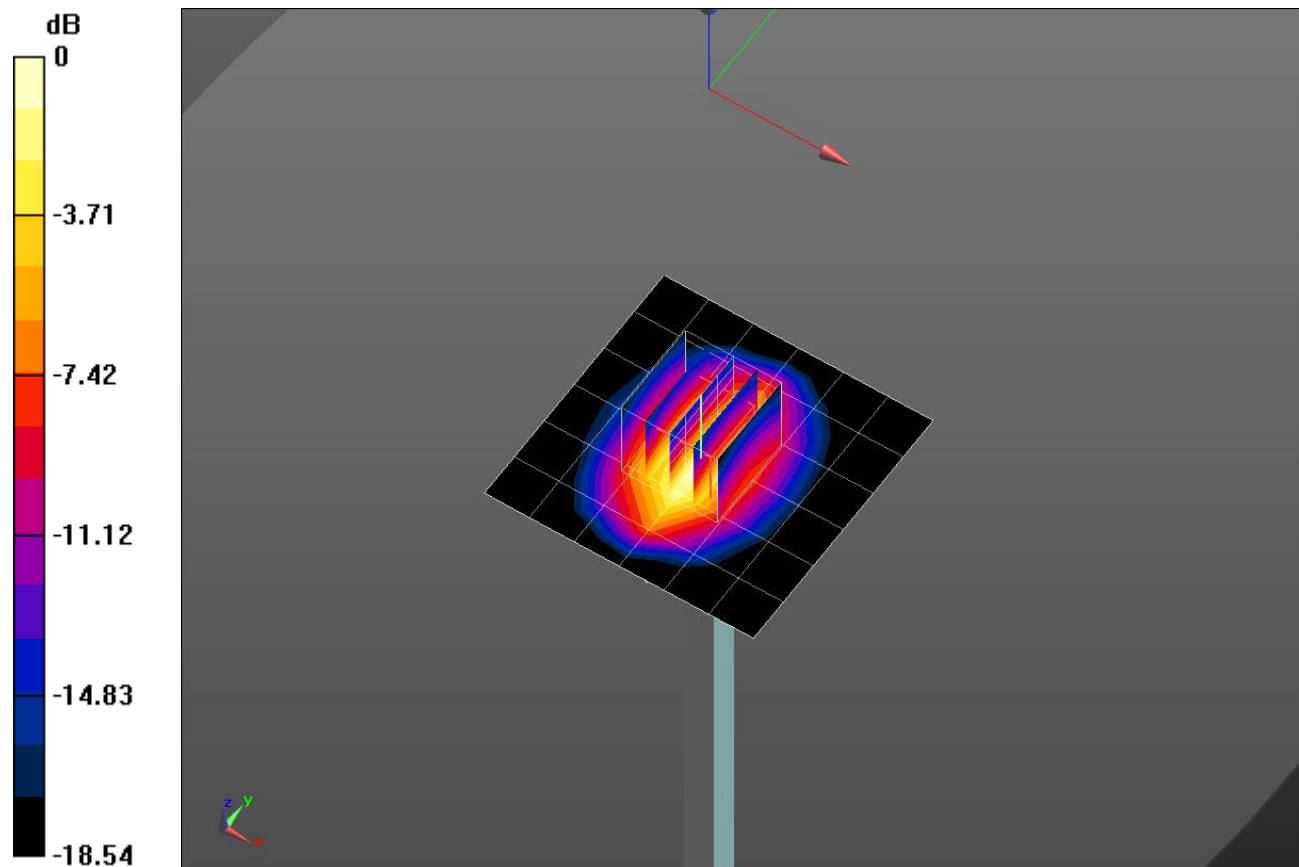
**Body/Pin=100 mW/Zoom Scan (5x5x7)/Cube 0:** Measurement grid: dx=8mm, dy=8mm, dz=5mm

Reference Value = 59.91 V/m; Power Drift = 0.08 dB

Peak SAR (extrapolated) = 7.78 W/kg

**SAR(1 g) = 4.22 W/kg; SAR(10 g) = 2.15 W/kg**

Maximum value of SAR (measured) = 5.75 W/kg

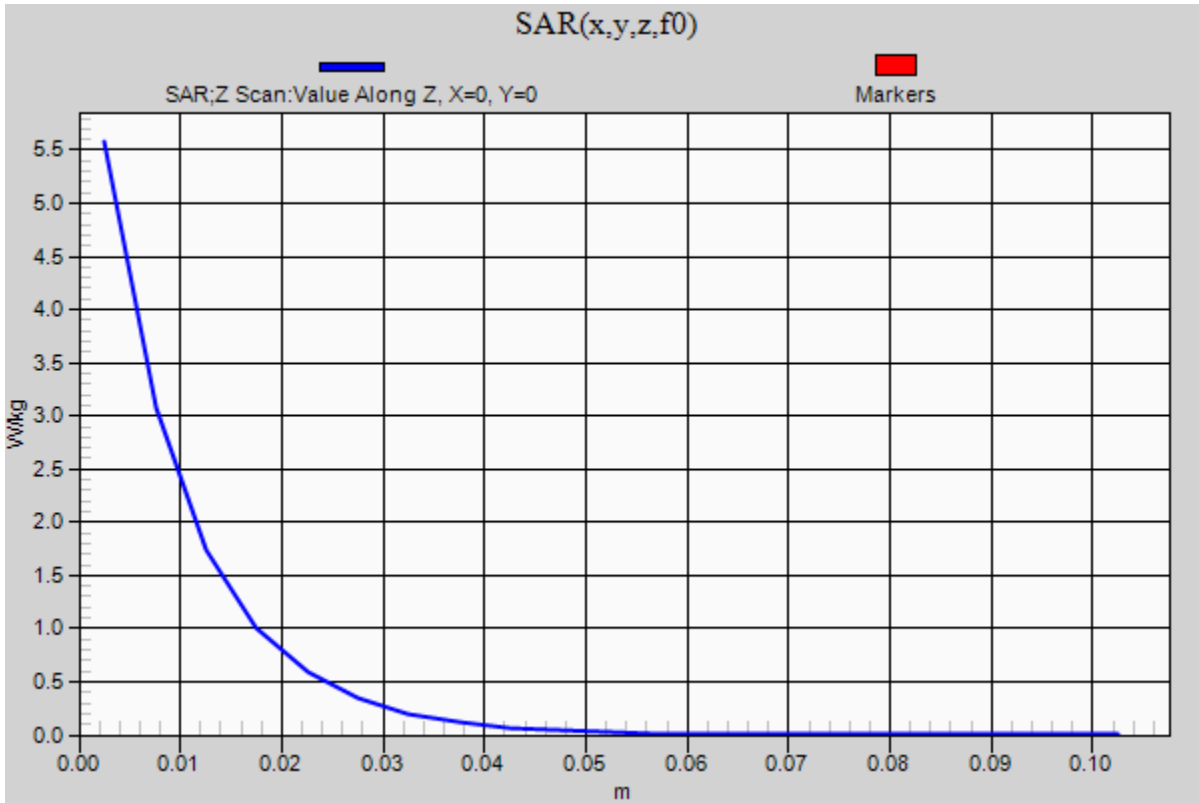


0 dB = 5.75 W/kg = 7.60 dBW/kg

### 20180129\_SystemPerformanceCheck-D1900V2 SN 5d199

Frequency: 1900 MHz; Duty Cycle: 1:1

**Body/Pin=100 mW/Z Scan (1x1x21):** Measurement grid: dx=20mm, dy=20mm, dz=5mm  
Maximum value of SAR (measured) = 5.58 W/kg



**20180202\_SystemPerformanceCheck-D2450V2 SN 960**

Frequency: 2450 MHz; Duty Cycle: 1:1; Room Ambient Temperature: 23.0°C; Liquid Temperature: 22.0°C  
Medium parameters used:  $f = 2450$  MHz;  $\sigma = 1.961$  S/m;  $\epsilon_r = 51.933$ ;  $\rho = 1000$  kg/m<sup>3</sup>

DASY5 Configuration:

- Area Scan Setting: Find Secondary Maximum Within: 2.0 dB and with a peak SAR value greater than 0.0012W/kg
- Averaged Fast SAR: Polynomial fit
- Electronics: DAE4 Sn1494; Calibrated: 2017-07-20
- Probe: EX3DV4 - SN7314; ConvF(7.59, 7.59, 7.59); Calibrated: 2017-09-28;
- Sensor-Surface: 2.5mm (Mechanical Surface Detection)
- Phantom: Triple Flat Phantom 5.1C; Type: QD 000 P51 CA; Serial: 1166

**Body/Pin=100 mW/Area Scan (8x8x1):** Measurement grid: dx=12mm, dy=12mm

Maximum value of SAR (measured) = 5.71 W/kg

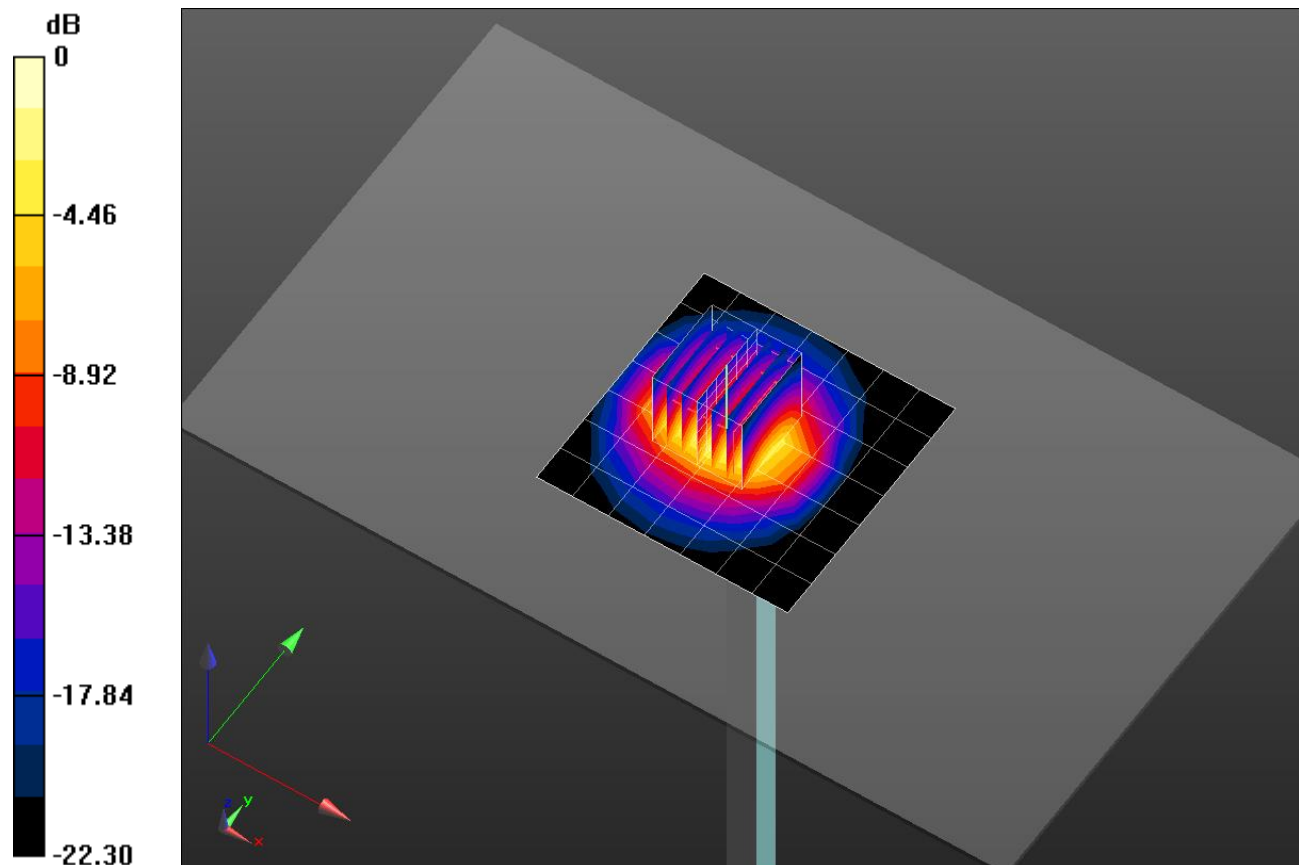
**Body/Pin=100 mW/Zoom Scan (7x7x7)/Cube 0:** Measurement grid: dx=5mm, dy=5mm, dz=5mm

Reference Value = 54.09 V/m; Power Drift = 0.06 dB

Peak SAR (extrapolated) = 10.1 W/kg

**SAR(1 g) = 4.89 W/kg; SAR(10 g) = 2.25 W/kg**

Maximum value of SAR (measured) = 6.88 W/kg



0 dB = 6.88 W/kg = 8.38 dBW/kg

### 20180202\_SystemPerformanceCheck-D2450V2 SN 960

Frequency: 2450 MHz; Duty Cycle: 1:1

**Body/Pin=100 mW 2/Z Scan (1x1x21):** Measurement grid: dx=20mm, dy=20mm, dz=5mm  
Maximum value of SAR (measured) = 5.82 W/kg

