

## GSM 850\_0514

Frequency: 836.6 MHz; Duty Cycle: 1:4.00037; Room Ambient Temperature: 24.0°C; Liquid Temperature: 23.0°C  
 Medium parameters used (interpolated):  $f = 836.6$  MHz;  $\sigma = 0.884$  S/m;  $\epsilon_r = 42.006$ ;  $\rho = 1000$  kg/m<sup>3</sup>

DASY5 Configuration:

- Area Scan Setting: Find Secondary Maximum Within: 2.0 dB and with a peak SAR value greater than 0.0012W/kg
- Electronics: DAE4 Sn1447; Calibrated: 2014-08-25
- Probe: EX3DV4 - SN7313; ConvF(9.73, 9.73, 9.73); Calibrated: 2014-08-27;
- Sensor-Surface: 2.5mm (Mechanical Surface Detection)
- Phantom: SAM (20deg probe tilt) with CRP v5.0(Right); Type: QD000P40CD; Serial: TP:1846

**LHS/Touch\_GPRS 2 Slot\_ch 190/Area Scan (7x12x1):** Measurement grid: dx=15mm, dy=15mm  
 Maximum value of SAR (measured) = 0.418 W/kg

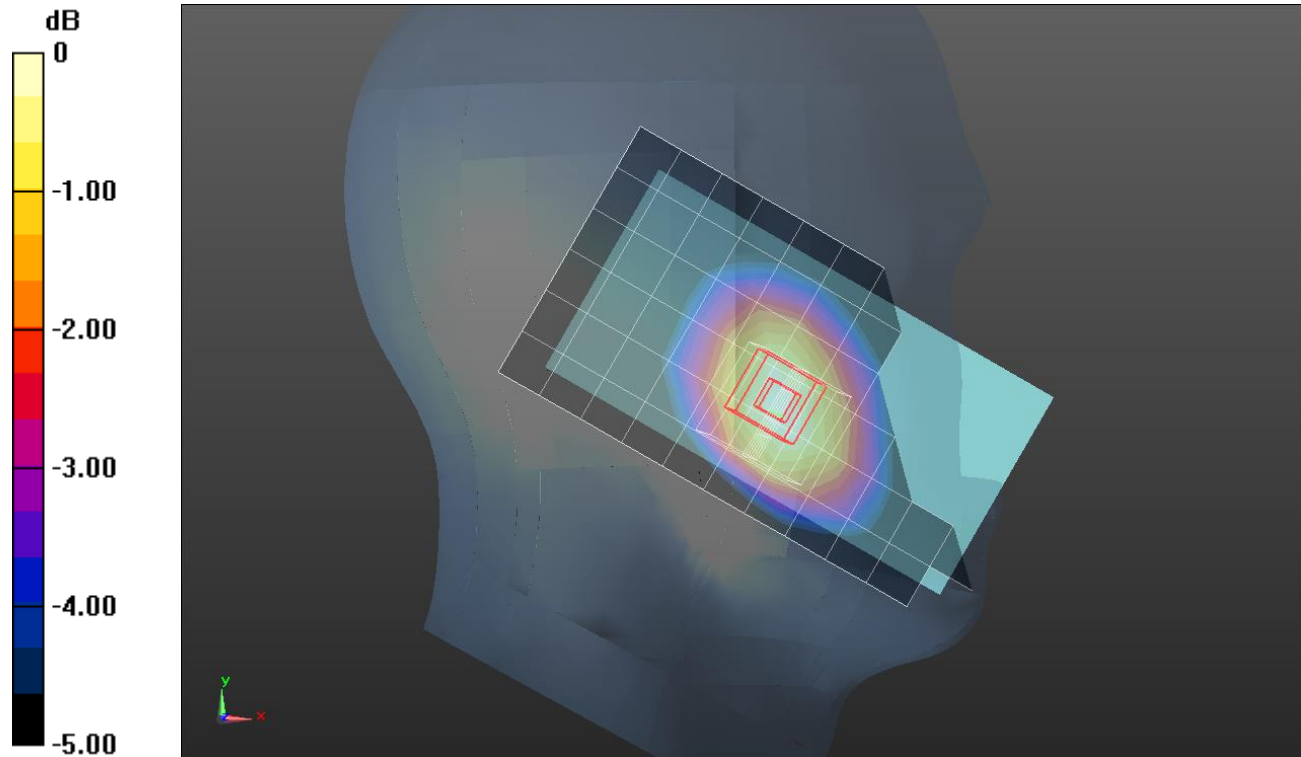
**LHS/Touch\_GPRS 2 Slot\_ch 190/Zoom Scan (5x5x7)/Cube 0:** Measurement grid: dx=8mm, dy=8mm, dz=5mm

Reference Value = 20.55 V/m; Power Drift = 0.01 dB

Peak SAR (extrapolated) = 0.477 W/kg

**SAR(1 g) = 0.382 W/kg; SAR(10 g) = 0.289 W/kg**

Maximum value of SAR (measured) = 0.423 W/kg



0 dB = 0.423 W/kg = -3.74 dBW/kg

## GSM 850\_0513

Frequency: 836.6 MHz; Duty Cycle: 1:4.00037; Room Ambient Temperature: 24.0°C; Liquid Temperature: 23.0°C  
 Medium parameters used (interpolated):  $f = 836.6$  MHz;  $\sigma = 1.016$  S/m;  $\epsilon_r = 54.331$ ;  $\rho = 1000$  kg/m<sup>3</sup>

DASY5 Configuration:

- Area Scan Setting: Find Secondary Maximum Within: 2.0 dB and with a peak SAR value greater than 0.0012W/kg
- Electronics: DAE4 Sn1447; Calibrated: 2014-08-25
- Probe: EX3DV4 - SN7313; ConvF(9.57, 9.57, 9.57); Calibrated: 2014-08-27;
- Sensor-Surface: 2.5mm (Mechanical Surface Detection)
- Phantom: Triple Flat Phantom 5.1C; Type: QD 000 P51 CA; Serial: 1166

**Rear/GPRS 2 Slot\_ch 190 10mm/Area Scan (8x13x1):** Measurement grid: dx=15mm, dy=15mm  
 Maximum value of SAR (measured) = 0.786 W/kg

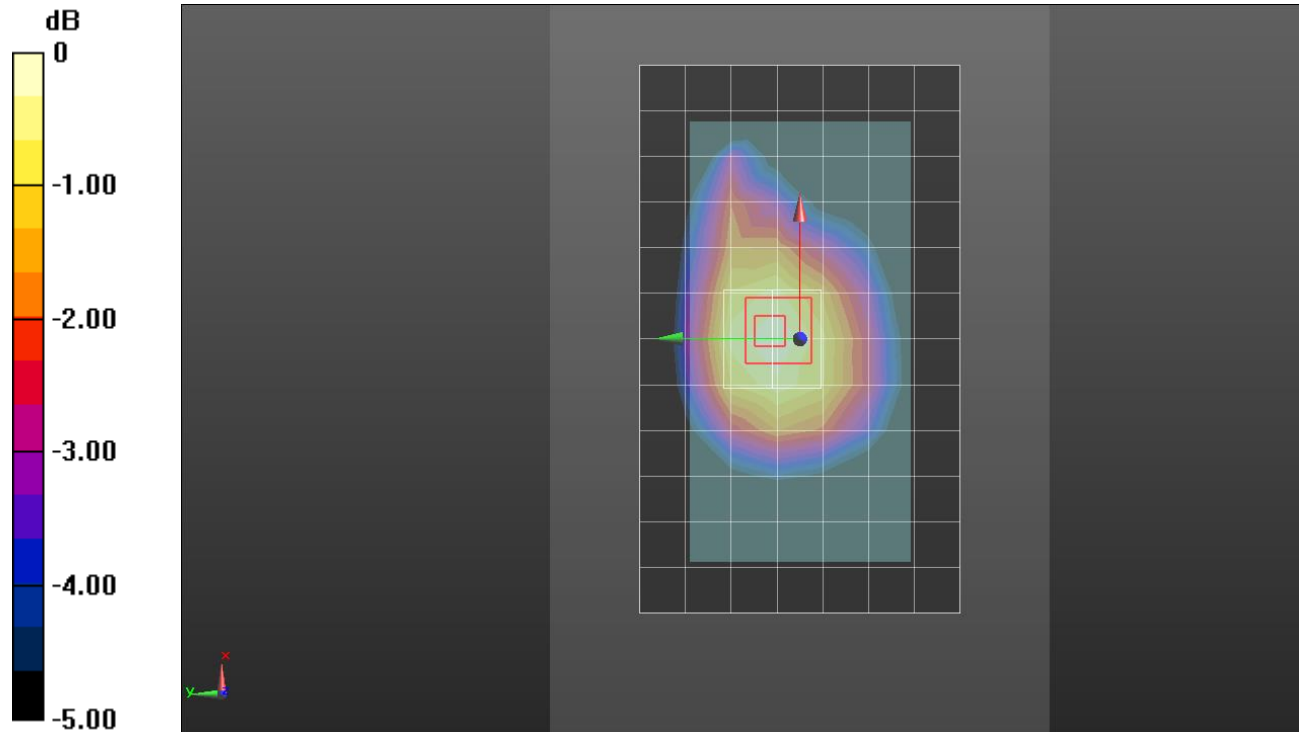
**Rear/GPRS 2 Slot\_ch 190 10mm/Zoom Scan (5x5x7)/Cube 0:** Measurement grid: dx=8mm, dy=8mm, dz=5mm

Reference Value = 28.07 V/m; Power Drift = -0.00 dB

Peak SAR (extrapolated) = 0.914 W/kg

**SAR(1 g) = 0.687 W/kg; SAR(10 g) = 0.506 W/kg**

Maximum value of SAR (measured) = 0.779 W/kg



0 dB = 0.779 W/kg = -1.08 dBW/kg

## GSM 1900\_0512

Frequency: 1880 MHz; Duty Cycle: 1:2.60016; Room Ambient Temperature: 24.0°C; Liquid Temperature: 23.0°C  
 Medium parameters used:  $f = 1880 \text{ MHz}$ ;  $\sigma = 1.442 \text{ S/m}$ ;  $\epsilon_r = 39.29$ ;  $\rho = 1000 \text{ kg/m}^3$

DASY5 Configuration:

- Area Scan Setting: Find Secondary Maximum Within: 2.0 dB and with a peak SAR value greater than 0.0012W/kg
- Electronics: DAE4 Sn1447; Calibrated: 2014-08-25
- Probe: EX3DV4 - SN7313; ConvF(7.87, 7.87, 7.87); Calibrated: 2014-08-27;
- Sensor-Surface: 2.5mm (Mechanical Surface Detection)
- Phantom: SAM (20deg probe tilt) with CRP v5.0(Middle); Type: QD000P40CD; Serial: TP:1847

**LHS/Touch\_GPRS 3 Slot\_ch 661/Area Scan (7x12x1):** Measurement grid: dx=15mm, dy=15mm  
 Maximum value of SAR (measured) = 0.158 W/kg

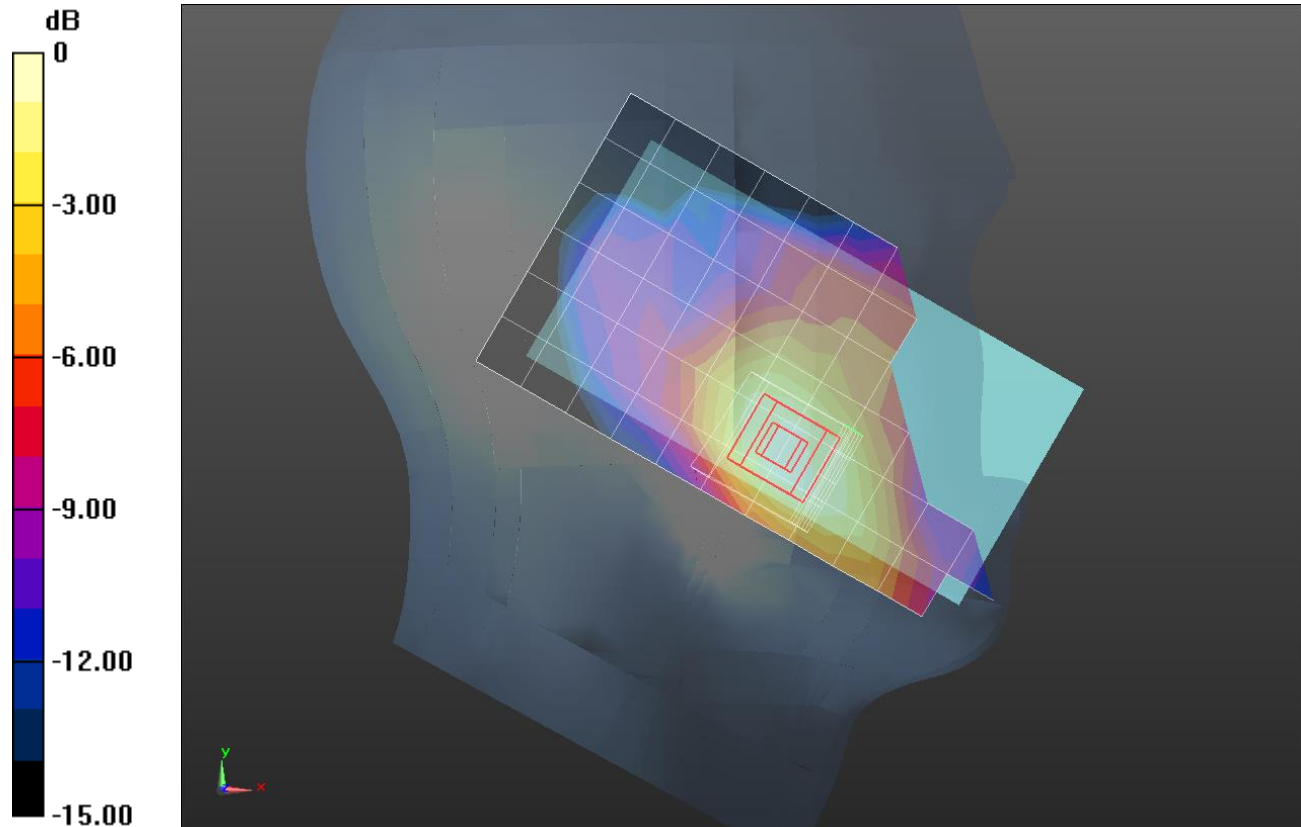
**LHS/Touch\_GPRS 3 Slot\_ch 661/Zoom Scan (5x5x7)/Cube 0:** Measurement grid: dx=8mm, dy=8mm, dz=5mm

Reference Value = 10.70 V/m; Power Drift = -0.02 dB

Peak SAR (extrapolated) = 0.233 W/kg

**SAR(1 g) = 0.146 W/kg; SAR(10 g) = 0.088 W/kg**

Maximum value of SAR (measured) = 0.183 W/kg



0 dB = 0.183 W/kg = -7.38 dBW/kg

## GSM 1900\_0512

Frequency: 1880 MHz; Duty Cycle: 1:2.60016; Room Ambient Temperature: 24.0°C; Liquid Temperature: 23.0°C  
 Medium parameters used:  $f = 1880$  MHz;  $\sigma = 1.551$  S/m;  $\epsilon_r = 55.915$ ;  $\rho = 1000$  kg/m<sup>3</sup>

DASY5 Configuration:

- Area Scan Setting: Find Secondary Maximum Within: 2.0 dB and with a peak SAR value greater than 0.0012W/kg
- Electronics: DAE4 Sn1447; Calibrated: 2014-08-25
- Probe: EX3DV4 - SN7313; ConvF(7.49, 7.49, 7.49); Calibrated: 2014-08-27;
- Sensor-Surface: 2.5mm (Mechanical Surface Detection)
- Phantom: ELI v5.0 (20deg probe tilt); Type: QDOVA002AA; Serial: TP:2005

**Rear/GPRS 3 slots\_ch 661 10mm/Area Scan (8x12x1):** Measurement grid: dx=15mm, dy=15mm  
 Maximum value of SAR (measured) = 0.821 W/kg

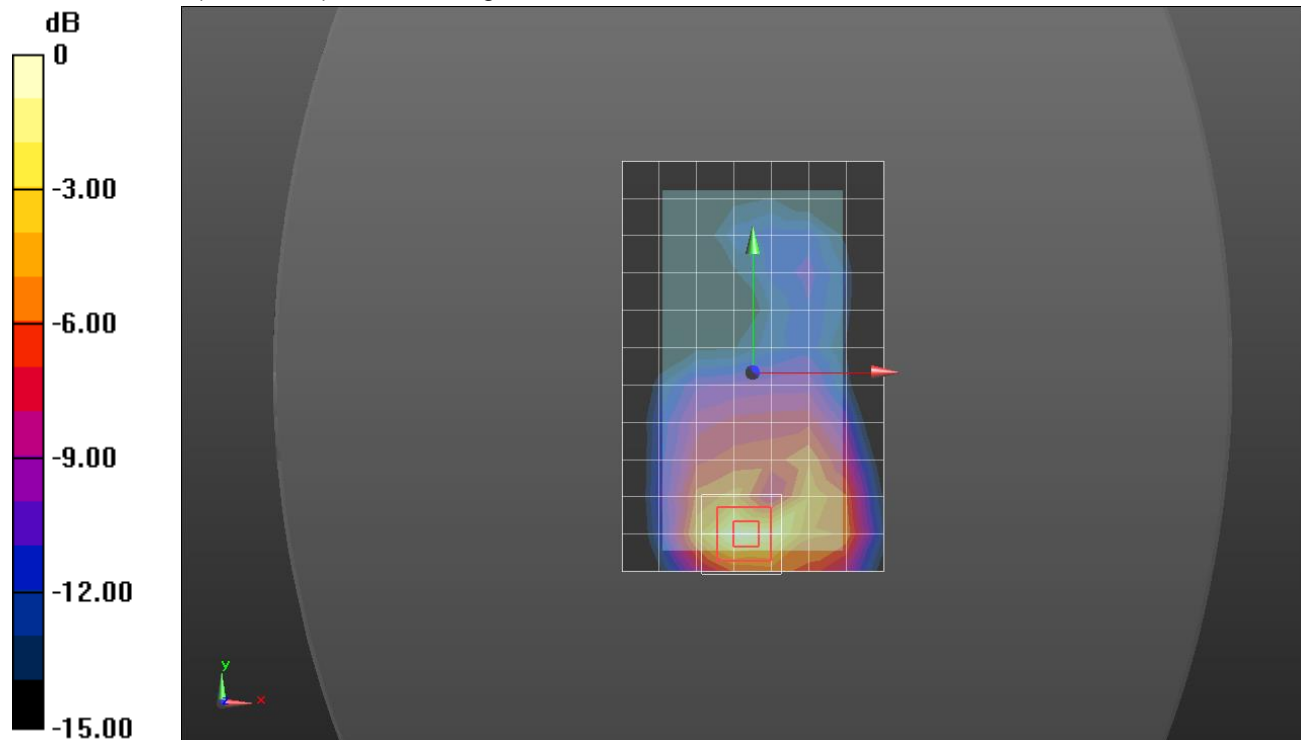
**Rear/GPRS 3 slots\_ch 661 10mm/Zoom Scan (5x5x7)/Cube 0:** Measurement grid: dx=8mm, dy=8mm, dz=5mm

Reference Value = 23.28 V/m; Power Drift = -0.03 dB

Peak SAR (extrapolated) = 1.17 W/kg

**SAR(1 g) = 0.661 W/kg; SAR(10 g) = 0.341 W/kg**

Maximum value of SAR (measured) = 0.874 W/kg



0 dB = 0.874 W/kg = -0.58 dBW/kg

## WCDMA Band V\_0514

Frequency: 836.6 MHz; Duty Cycle: 1:1; Room Ambient Temperature: 24.0°C; Liquid Temperature: 23.0°C  
 Medium parameters used (interpolated):  $f = 836.6$  MHz;  $\sigma = 0.884$  S/m;  $\epsilon_r = 42.006$ ;  $\rho = 1000$  kg/m<sup>3</sup>

DASY5 Configuration:

- Area Scan Setting: Find Secondary Maximum Within: 2.0 dB and with a peak SAR value greater than 0.0012W/kg
- Electronics: DAE4 Sn1447; Calibrated: 2014-08-25
- Probe: EX3DV4 - SN7313; ConvF(9.73, 9.73, 9.73); Calibrated: 2014-08-27;
- Sensor-Surface: 2.5mm (Mechanical Surface Detection)
- Phantom: SAM (20deg probe tilt) with CRP v5.0(Right); Type: QD000P40CD; Serial: TP:1846

**LHS/Touch\_RMC Rel .99\_ch 4183/Area Scan (7x12x1):** Measurement grid: dx=15mm, dy=15mm  
 Maximum value of SAR (measured) = 0.233 W/kg

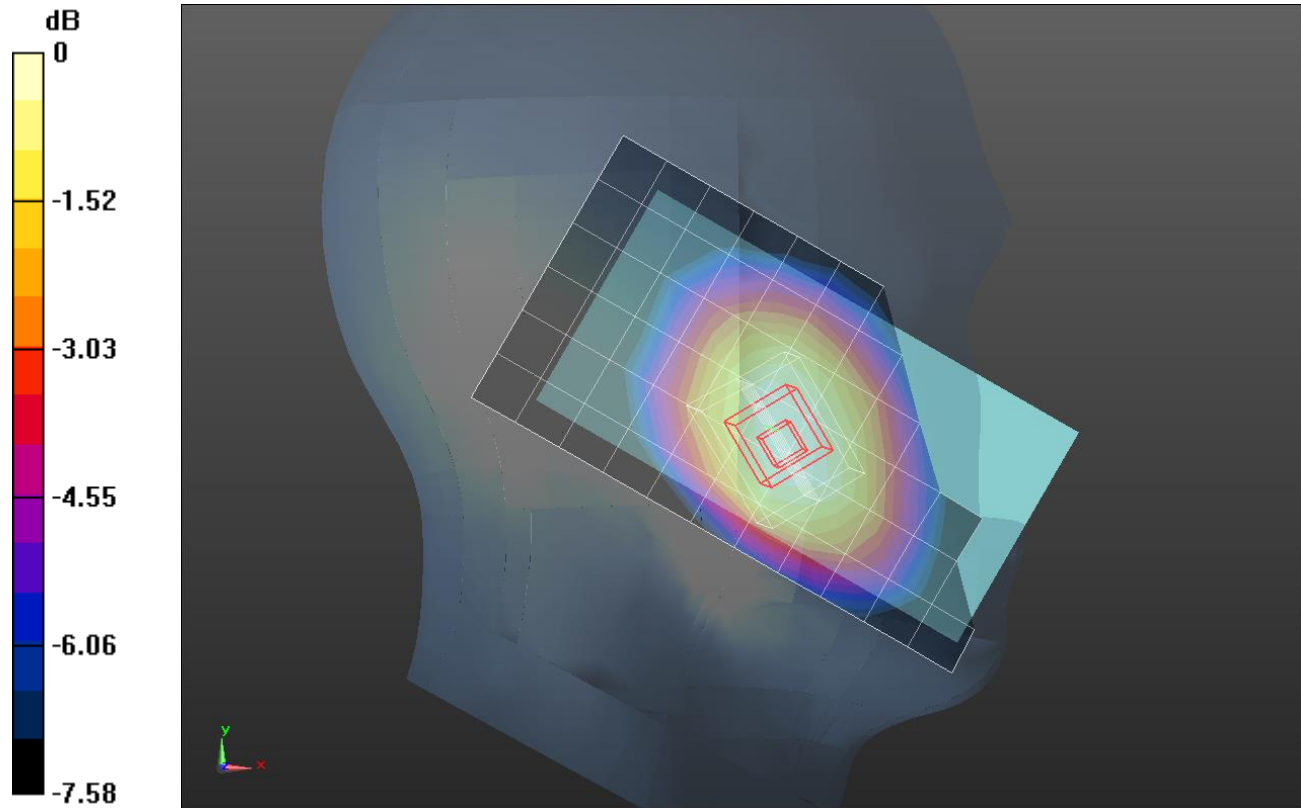
**LHS/Touch\_RMC Rel .99\_ch 4183/Zoom Scan (6x5x7)/Cube 0:** Measurement grid: dx=8mm, dy=8mm, dz=5mm

Reference Value = 16.16 V/m; Power Drift = -0.01 dB

Peak SAR (extrapolated) = 0.253 W/kg

**SAR(1 g) = 0.200 W/kg; SAR(10 g) = 0.153 W/kg**

Maximum value of SAR (measured) = 0.222 W/kg



0 dB = 0.222 W/kg = -6.54 dBW/kg

## WCDMA Band V\_0513

Frequency: 836.6 MHz; Duty Cycle: 1:1; Room Ambient Temperature: 24.0°C; Liquid Temperature: 23.0°C  
 Medium parameters used (interpolated):  $f = 836.6$  MHz;  $\sigma = 1.016$  S/m;  $\epsilon_r = 54.331$ ;  $\rho = 1000$  kg/m<sup>3</sup>

DASY5 Configuration:

- Area Scan Setting: Find Secondary Maximum Within: 2.0 dB and with a peak SAR value greater than 0.0012W/kg
- Electronics: DAE4 Sn1447; Calibrated: 2014-08-25
- Probe: EX3DV4 - SN7313; ConvF(9.57, 9.57, 9.57); Calibrated: 2014-08-27;
- Sensor-Surface: 2.5mm (Mechanical Surface Detection)
- Phantom: Triple Flat Phantom 5.1C; Type: QD 000 P51 CA; Serial: 1166

**Rear/RMC Rel .99\_ch 4183/Area Scan (8x13x1):** Measurement grid: dx=15mm, dy=15mm.

Maximum value of SAR (measured) = 0.565 W/kg

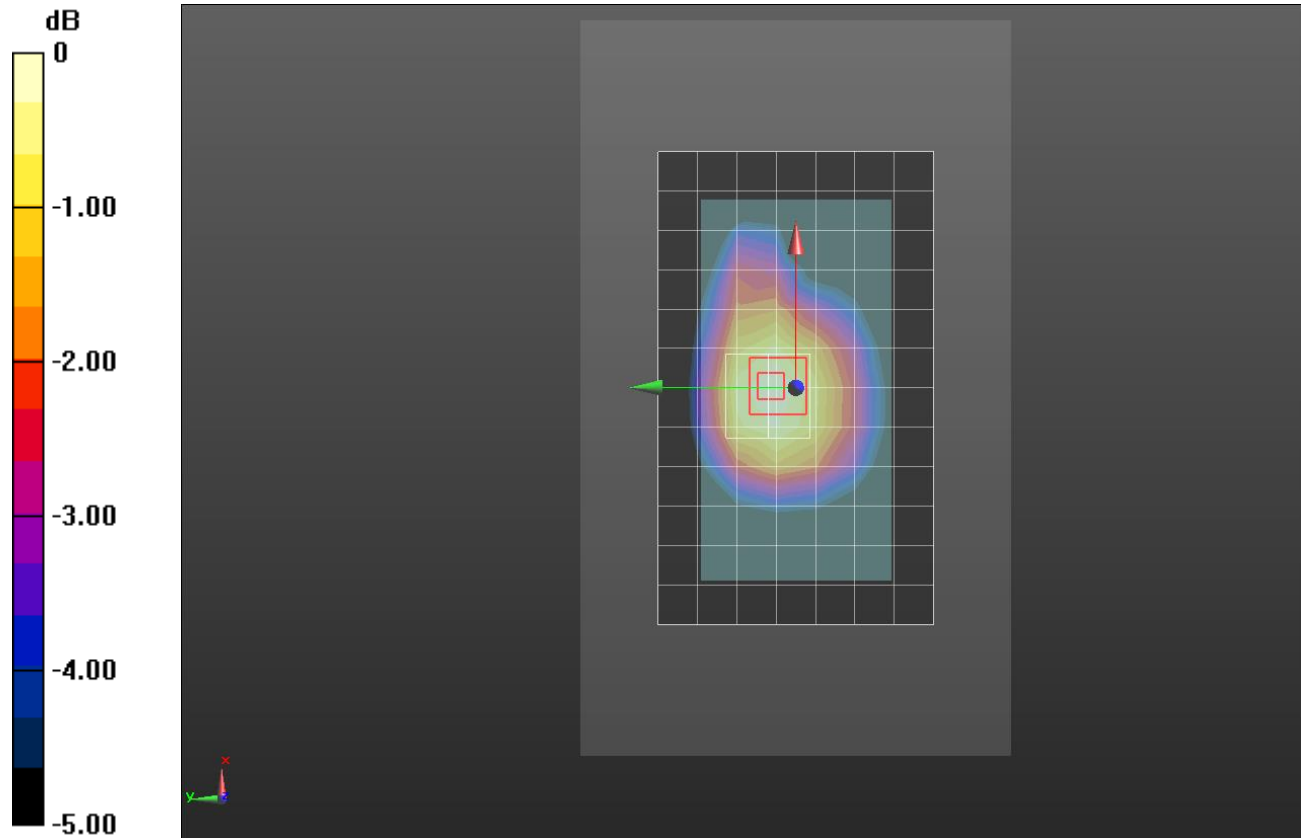
**Rear/RMC Rel .99\_ch 4183/Zoom Scan (5x5x7)/Cube 0:** Measurement grid: dx=8mm, dy=8mm, dz=5mm

Reference Value = 23.69 V/m; Power Drift = -0.06 dB

Peak SAR (extrapolated) = 0.649 W/kg

**SAR(1 g) = 0.487 W/kg; SAR(10 g) = 0.358 W/kg**

Maximum value of SAR (measured) = 0.556 W/kg



0 dB = 0.556 W/kg = -2.55 dBW/kg

## WCDMA Band II\_0512

Frequency: 1880 MHz; Duty Cycle: 1:1; Room Ambient Temperature: 24.0°C; Liquid Temperature: 23.0°C  
 Medium parameters used:  $f = 1880 \text{ MHz}$ ;  $\sigma = 1.442 \text{ S/m}$ ;  $\epsilon_r = 39.29$ ;  $\rho = 1000 \text{ kg/m}^3$

DASY5 Configuration:

- Area Scan Setting: Find Secondary Maximum Within: 2.0 dB and with a peak SAR value greater than 0.0012W/kg
- Electronics: DAE4 Sn1447; Calibrated: 2014-08-25
- Probe: EX3DV4 - SN7313; ConvF(7.87, 7.87, 7.87); Calibrated: 2014-08-27;
- Sensor-Surface: 2.5mm (Mechanical Surface Detection)
- Phantom: SAM (20deg probe tilt) with CRP v5.0(Middle); Type: QD000P40CD; Serial: TP:1847

**LHS/Touch\_RMC Rel .99\_ch 9400/Area Scan (7x12x1):** Measurement grid: dx=15mm, dy=15mm  
 Maximum value of SAR (measured) = 0.238 W/kg

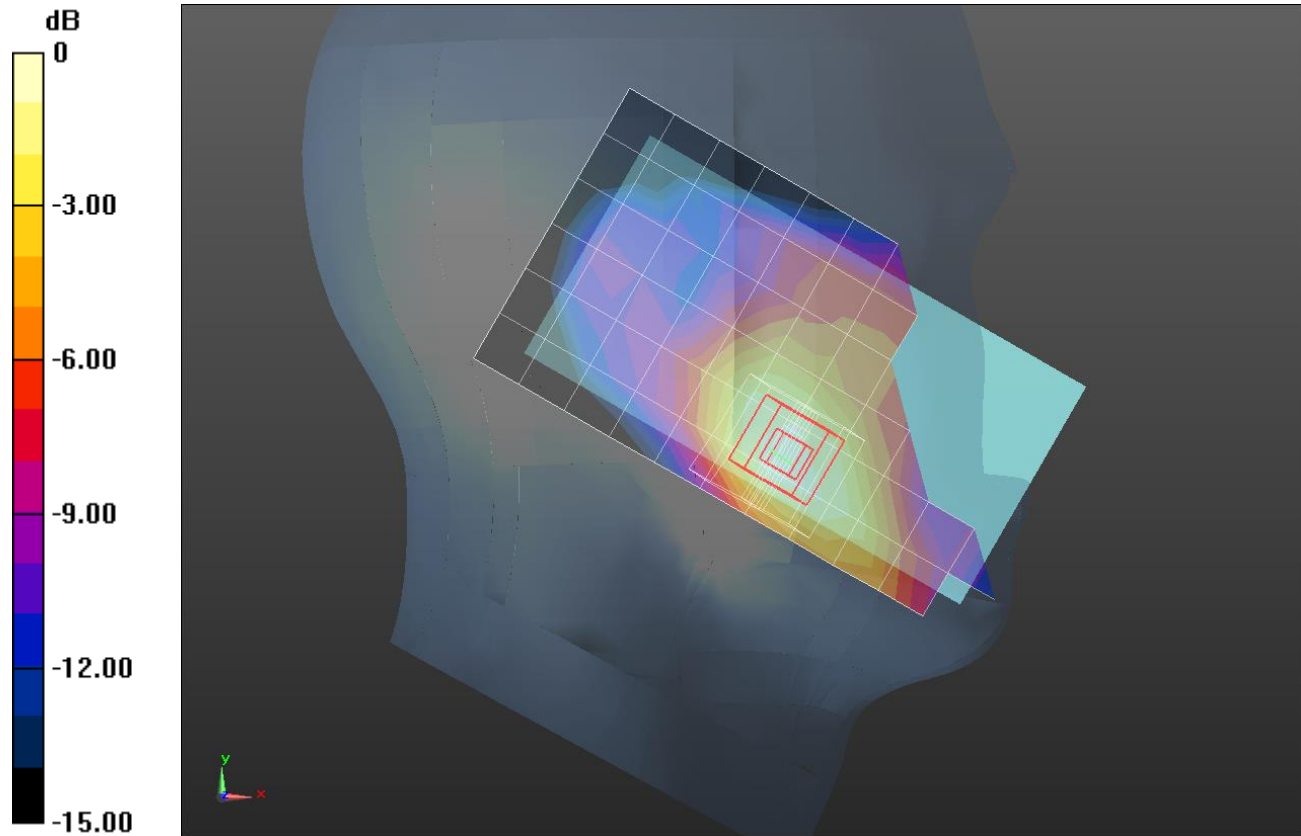
**LHS/Touch\_RMC Rel .99\_ch 9400/Zoom Scan (5x5x7)/Cube 0:** Measurement grid: dx=8mm, dy=8mm, dz=5mm

Reference Value = 13.18 V/m; Power Drift = -0.00 dB

Peak SAR (extrapolated) = 0.339 W/kg

**SAR(1 g) = 0.213 W/kg; SAR(10 g) = 0.129 W/kg**

Maximum value of SAR (measured) = 0.266 W/kg



0 dB = 0.266 W/kg = -5.75 dBW/kg

## WCDMA Band II

Frequency: 1880 MHz; Duty Cycle: 1:1; Room Ambient Temperature: 24.0°C; Liquid Temperature: 23.0°C  
 Medium parameters used:  $f = 1880 \text{ MHz}$ ;  $\sigma = 1.567 \text{ S/m}$ ;  $\epsilon_r = 53.907$ ;  $\rho = 1000 \text{ kg/m}^3$

DASY5 Configuration:

- Area Scan Setting: Find Secondary Maximum Within: 2.0 dB and with a peak SAR value greater than 0.0012W/kg
- Electronics: DAE4 Sn1447; Calibrated: 2014-08-25
- Probe: EX3DV4 - SN7313; ConvF(7.49, 7.49, 7.49); Calibrated: 2014-08-27;
- Sensor-Surface: 2.5mm (Mechanical Surface Detection)
- Phantom: ELI v5.0 (20deg probe tilt); Type: QDOVA002AA; Serial: TP:2005

**Rear/RMC Rel .99\_ch 9400/Area Scan (7x12x1):** Measurement grid: dx=15mm, dy=15mm

Maximum value of SAR (measured) = 0.845 W/kg

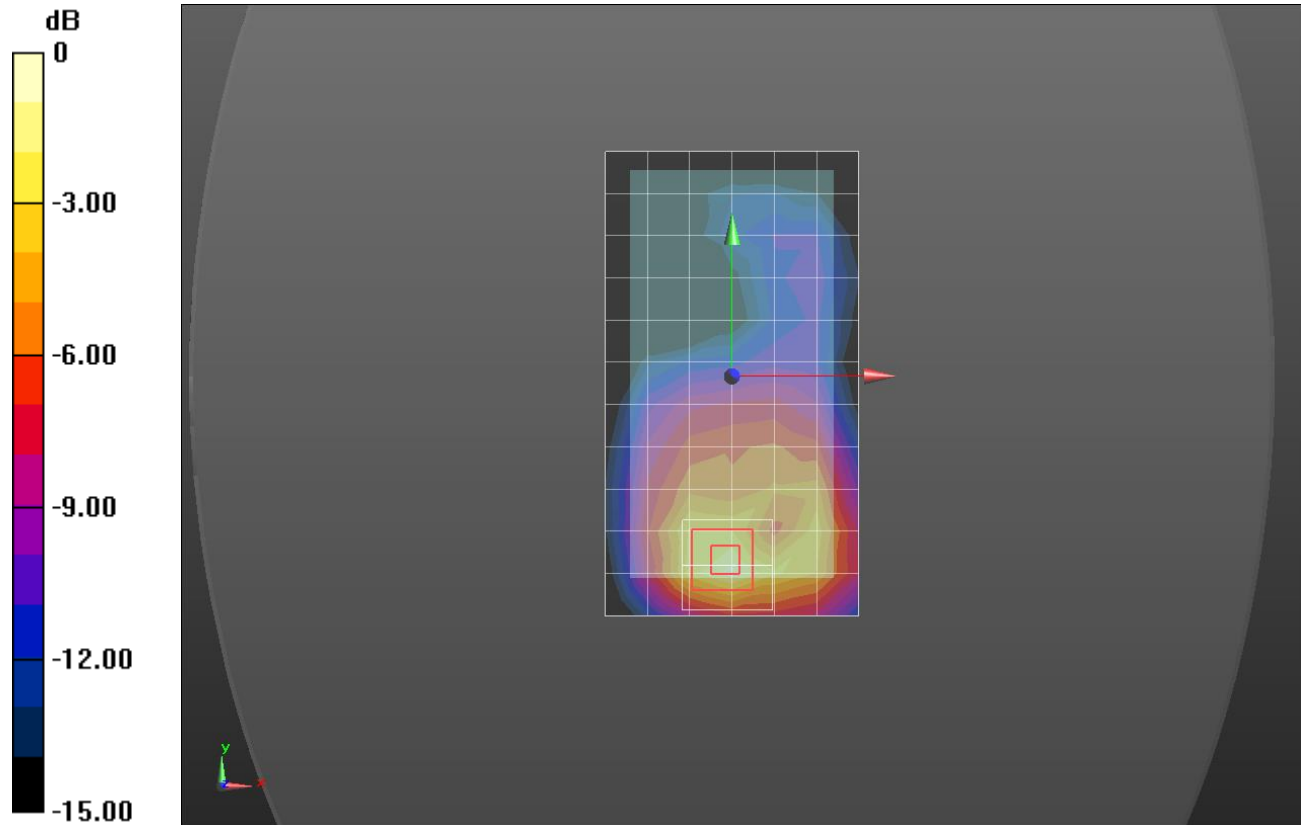
**Rear/RMC Rel .99\_ch 9400/Zoom Scan (5x5x7)/Cube 0:** Measurement grid: dx=8mm, dy=8mm, dz=5mm

Reference Value = 23.27 V/m; Power Drift = 0.01 dB

Peak SAR (extrapolated) = 1.24 W/kg

**SAR(1 g) = 0.712 W/kg; SAR(10 g) = 0.378 W/kg**

Maximum value of SAR (measured) = 0.932 W/kg



0 dB = 0.932 W/kg = -0.31 dBW/kg

## Wi-Fi 2.4GHz\_0513

Frequency: 2437 MHz; Duty Cycle: 1:1; Room Ambient Temperature: 24.0°C; Liquid Temperature: 23.0°C  
 Medium parameters used (interpolated):  $f = 2437$  MHz;  $\sigma = 1.853$  S/m;  $\epsilon_r = 39.269$ ;  $\rho = 1000$  kg/m<sup>3</sup>

DASY5 Configuration:

- Area Scan Setting: Find Secondary Maximum Within: 2.0 dB and with a peak SAR value greater than 0.0012W/kg
- Electronics: DAE4 Sn1446; Calibrated: 2014-08-27
- Probe: EX3DV4 - SN7323; ConvF(7.38, 7.38, 7.38); Calibrated: 2014-12-05;
- Sensor-Surface: 2.5mm (Mechanical Surface Detection)
- Phantom: SAM Phantom CRP v5.0(Middle); Type: QD000P40CD; Serial: TP:1854

**RHS/Touch\_802.11b\_ch 6/Area Scan (9x15x1):** Measurement grid: dx=12mm, dy=12mm

Maximum value of SAR (measured) = 0.303 W/kg

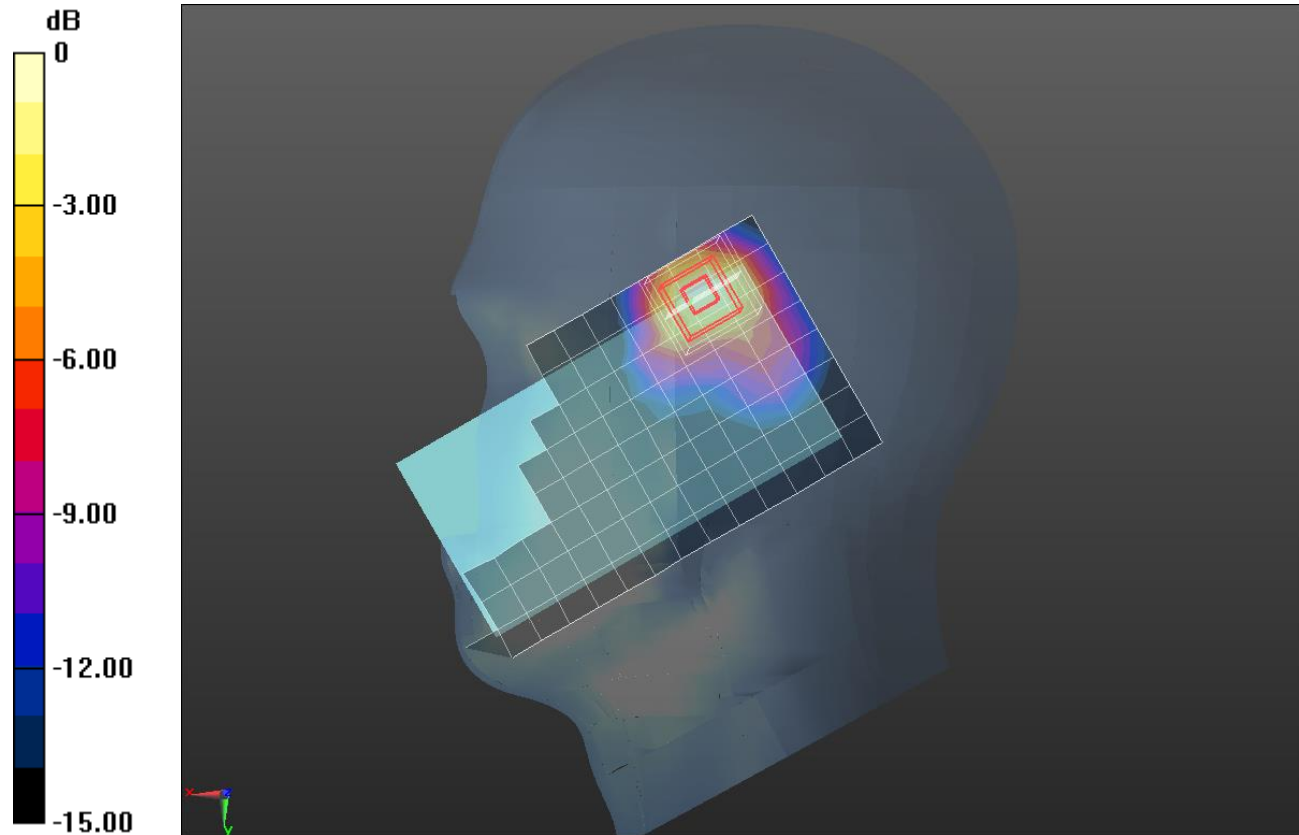
**RHS/Touch\_802.11b\_ch 6/Zoom Scan (7x7x7)/Cube 0:** Measurement grid: dx=5mm, dy=5mm, dz=5mm

Reference Value = 11.05 V/m; Power Drift = 0.09 dB

Peak SAR (extrapolated) = 0.593 W/kg

**SAR(1 g) = 0.251 W/kg; SAR(10 g) = 0.117 W/kg**

Maximum value of SAR (measured) = 0.358 W/kg



0 dB = 0.358 W/kg = -4.46 dBW/kg

## Wi-Fi 2.4GHz\_0513

Frequency: 2437 MHz; Duty Cycle: 1:1; Room Ambient Temperature: 24.0°C; Liquid Temperature: 23.0°C  
 Medium parameters used (interpolated):  $f = 2437$  MHz;  $\sigma = 1.946$  S/m;  $\epsilon_r = 51.256$ ;  $\rho = 1000$  kg/m<sup>3</sup>

DASY5 Configuration:

- Area Scan Setting: Find Secondary Maximum Within: 2.0 dB and with a peak SAR value greater than 0.0012W/kg
- Electronics: DAE4 Sn1447; Calibrated: 2014-08-25
- Probe: EX3DV4 - SN7313; ConvF(7.17, 7.17, 7.17); Calibrated: 2014-08-27;
- Sensor-Surface: 2.5mm (Mechanical Surface Detection)
- Phantom: Triple Flat Phantom 5.1C; Type: QD 000 P51 CA; Serial: 1166

**Rear/802.11b\_ch 6/Area Scan (9x15x1):** Measurement grid: dx=12mm, dy=12mm

Maximum value of SAR (measured) = 0.161 W/kg

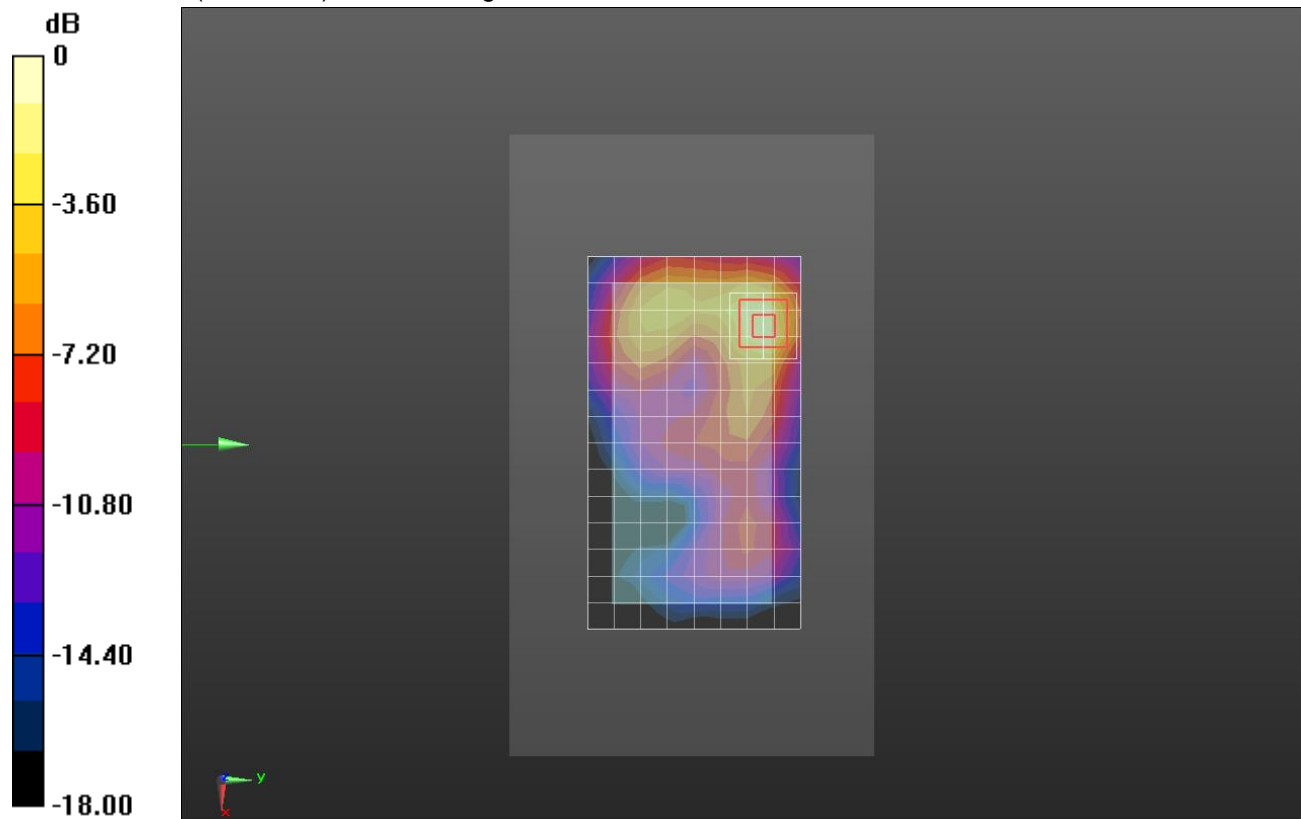
**Rear/802.11b\_ch 6/Zoom Scan (7x7x7)/Cube 0:** Measurement grid: dx=5mm, dy=5mm, dz=5mm

Reference Value = 9.616 V/m; Power Drift = 0.00 dB

Peak SAR (extrapolated) = 0.296 W/kg

**SAR(1 g) = 0.145 W/kg; SAR(10 g) = 0.068 W/kg**

Maximum value of SAR (measured) = 0.203 W/kg



0 dB = 0.203 W/kg = -6.93 dBW/kg