

## 20150517\_SystemPerformanceCheck-D835V2 SN 4d174

Frequency: 835 MHz; Duty Cycle: 1:1; Room Ambient Temperature: 24.0°C; Liquid Temperature: 23.0°C  
 Medium parameters used:  $f = 835 \text{ MHz}$ ;  $\sigma = 0.95 \text{ S/m}$ ;  $\epsilon_r = 52.999$ ;  $\rho = 1000 \text{ kg/m}^3$

DASY5 Configuration:

- Area Scan Setting: Find Secondary Maximum Within: 2.0 dB and with a peak SAR value greater than 0.0012W/kg
- Averaged Fast SAR: Polynomial fit
- Electronics: DAE4 Sn1447; Calibrated: 2014-08-25
- Probe: EX3DV4 - SN7313; ConvF(9.57, 9.57, 9.57); Calibrated: 2014-08-27;
- Sensor-Surface: 2.5mm (Mechanical Surface Detection)
- Phantom: Triple Flat Phantom 5.1C; Type: QD 000 P51 CA; Serial: 1166

**Body/Pin=100 mW/Area Scan (61x61x1):** Interpolated grid: dx=1.500 mm, dy=1.500 mm

Reference Value = 35.24 V/m; Power Drift = -0.00 dB

**Fast SAR: SAR(1 g) = 0.982 W/kg; SAR(10 g) = 0.658 W/kg**

Maximum value of SAR (interpolated) = 1.17 W/kg

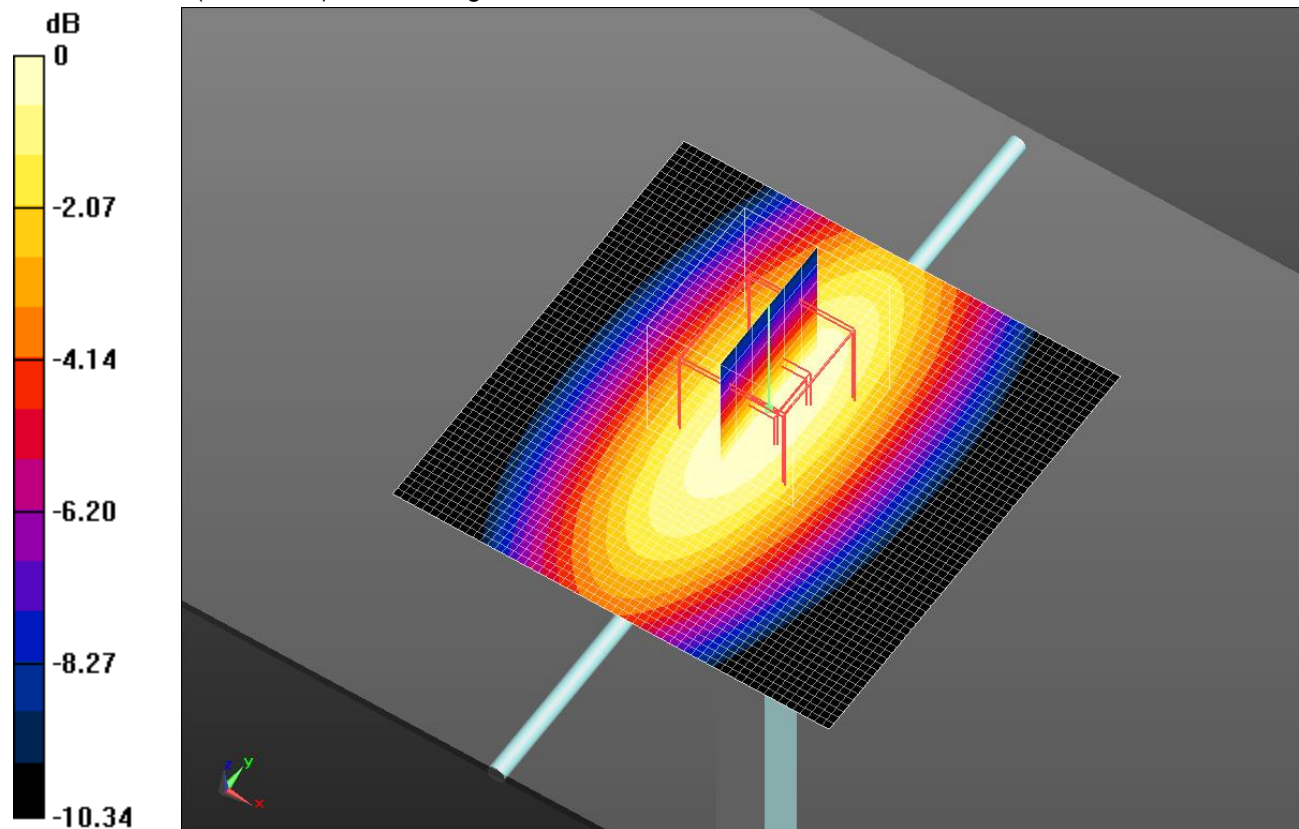
**Body/Pin=100 mW/Zoom Scan (7x7x7)/Cube 0:** Measurement grid: dx=5mm, dy=5mm, dz=5mm

Reference Value = 35.24 V/m; Power Drift = -0.00 dB

Peak SAR (extrapolated) = 1.42 W/kg

**SAR(1 g) = 0.961 W/kg; SAR(10 g) = 0.633 W/kg**

Maximum value of SAR (measured) = 1.17 W/kg

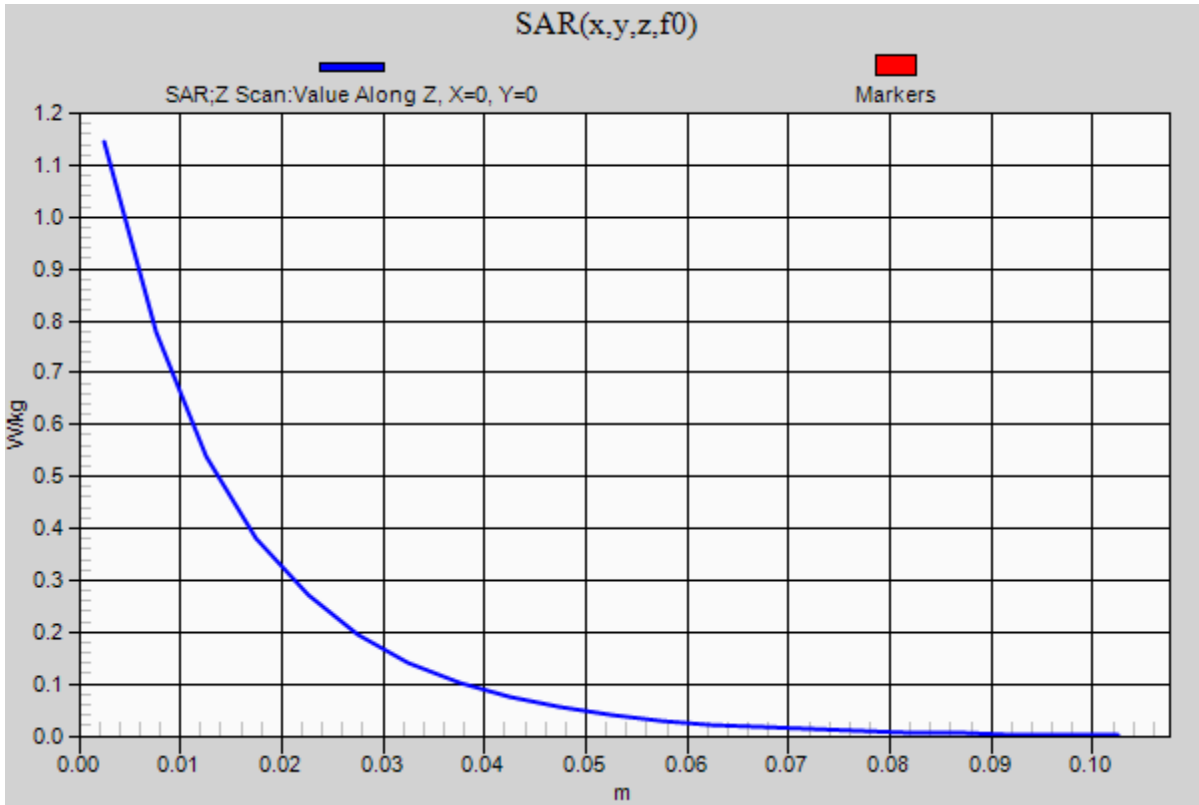


0 dB = 1.17 W/kg = 0.68 dBW/kg

### 20150517\_SystemPerformanceCheck-D835V2 SN 4d174

Frequency: 835 MHz; Duty Cycle: 1:1

**Body/Pin=100 mW/Z Scan (1x1x21):** Measurement grid: dx=20mm, dy=20mm, dz=5mm  
Maximum value of SAR (measured) = 1.14 W/kg



## 20150517\_SystemPerformanceCheck-D1900V2 SN 5d190

Frequency: 1900 MHz; Duty Cycle: 1:1; Room Ambient Temperature: 24.0°C; Liquid Temperature: 23.0°C  
 Medium parameters used:  $f = 1900 \text{ MHz}$ ;  $\sigma = 1.441 \text{ S/m}$ ;  $\epsilon_r = 38.639$ ;  $\rho = 1000 \text{ kg/m}^3$

DASY5 Configuration:

- Area Scan Setting: Find Secondary Maximum Within: 2.0 dB and with a peak SAR value greater than 0.0012W/kg
- Averaged Fast SAR: Polynomial fit
- Electronics: DAE4 Sn1447; Calibrated: 2014-08-25
- Probe: EX3DV4 - SN7313; ConvF(7.87, 7.87, 7.87); Calibrated: 2014-08-27;
- Sensor-Surface: 2.5mm (Mechanical Surface Detection)
- Phantom: SAM (20deg probe tilt) with CRP v5.0(Middle); Type: QD000P40CD; Serial: TP:1847

**Head/Pin=100 mW/Area Scan (61x61x1):** Interpolated grid:  $dx=1.500 \text{ mm}$ ,  $dy=1.500 \text{ mm}$

Reference Value = 62.48 V/m; Power Drift = 0.00 dB

**Fast SAR: SAR(1 g) = 4.26 W/kg; SAR(10 g) = 2.19 W/kg**

Maximum value of SAR (interpolated) = 5.64 W/kg

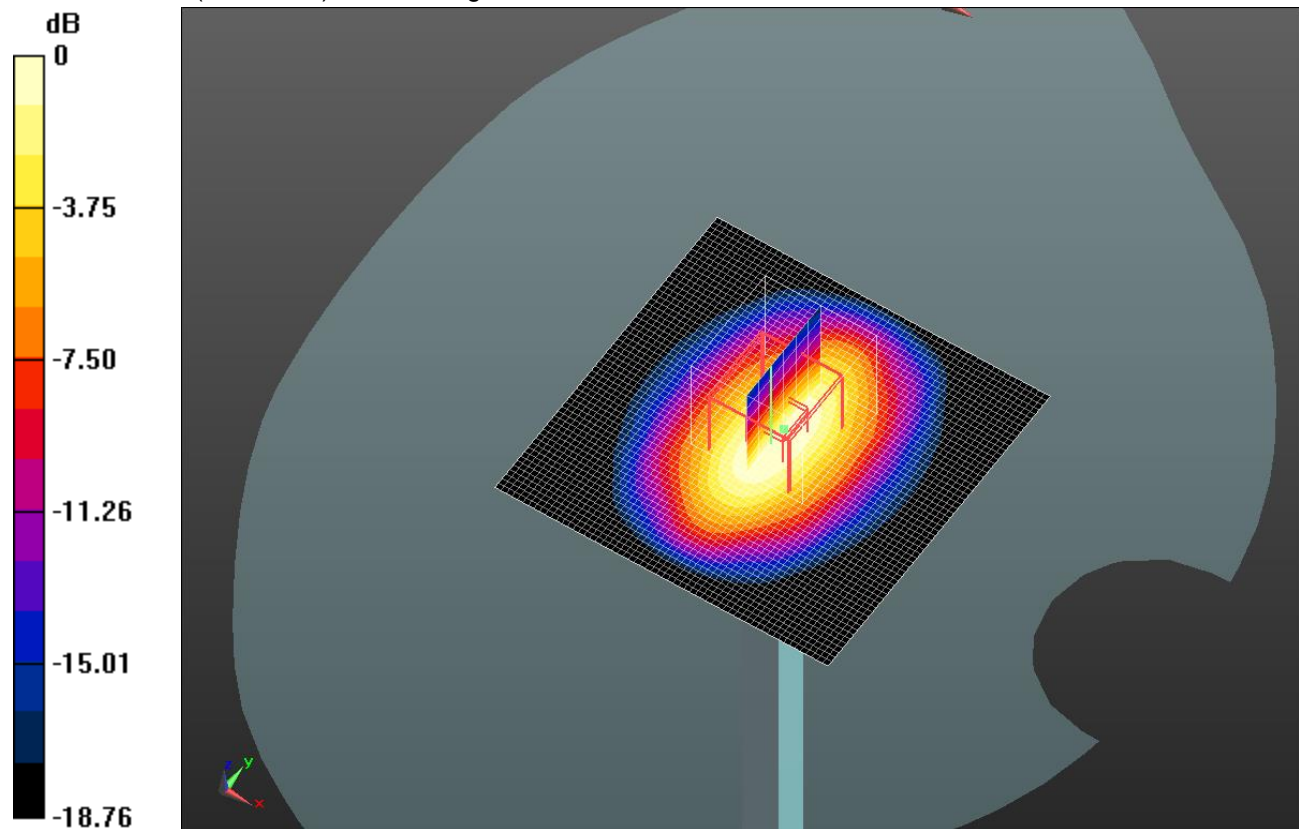
**Head/Pin=100 mW/Zoom Scan (7x7x7)/Cube 0:** Measurement grid:  $dx=5\text{mm}$ ,  $dy=5\text{mm}$ ,  $dz=5\text{mm}$

Reference Value = 62.48 V/m; Power Drift = 0.00 dB

Peak SAR (extrapolated) = 7.83 W/kg

**SAR(1 g) = 4.07 W/kg; SAR(10 g) = 2.08 W/kg**

Maximum value of SAR (measured) = 5.55 W/kg

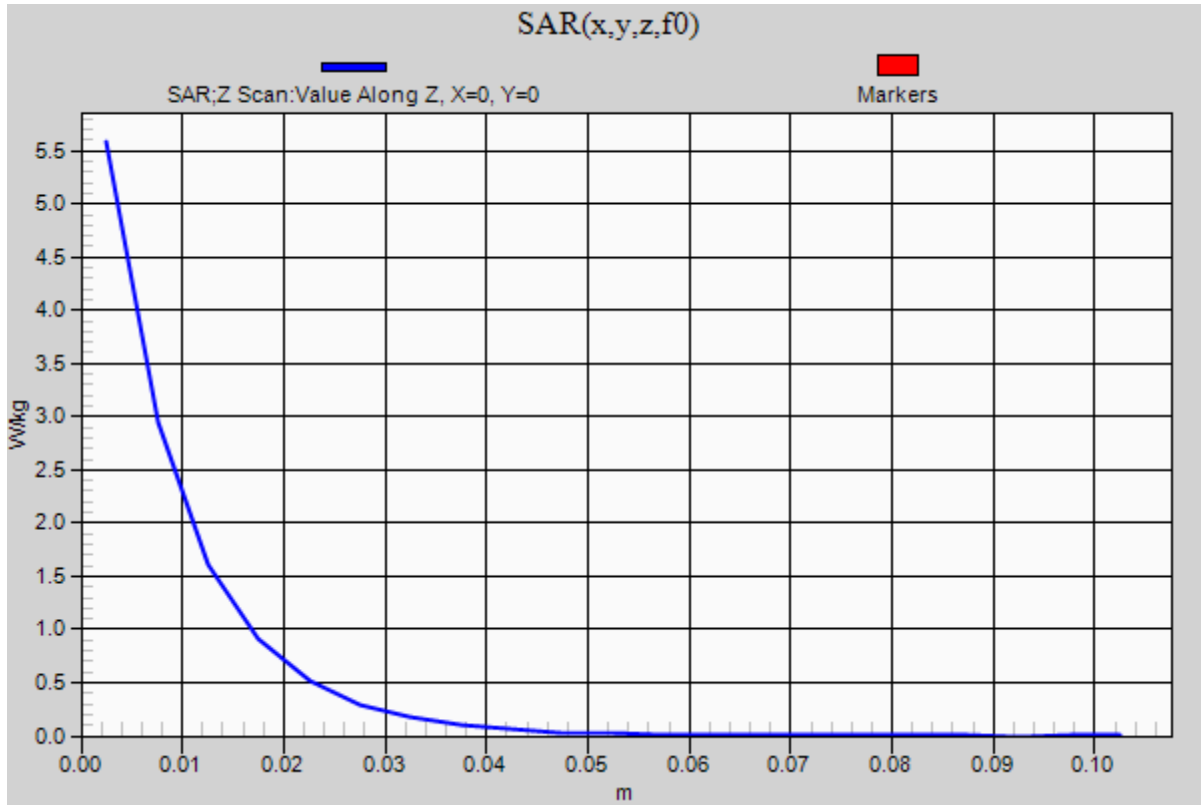


0 dB = 5.55 W/kg = 7.44 dBW/kg

### 20150517\_SystemPerformanceCheck-D1900V2 SN 5d190

Frequency: 1900 MHz; Duty Cycle: 1:1

**Head/Pin=100 mW/Z Scan (1x1x21):** Measurement grid: dx=20mm, dy=20mm, dz=5mm  
Maximum value of SAR (measured) = 5.58 W/kg



## 20150516\_SystemPerformanceCheck-D2450V2 SN 960

Frequency: 2450 MHz; Duty Cycle: 1:1; Room Ambient Temperature: 24.0°C; Liquid Temperature: 23.0°C  
 Medium parameters used:  $f = 2450 \text{ MHz}$ ;  $\sigma = 1.88 \text{ S/m}$ ;  $\epsilon_r = 38.51$ ;  $\rho = 1000 \text{ kg/m}^3$

DASY5 Configuration:

- Area Scan Setting: Find Secondary Maximum Within: 2.0 dB and with a peak SAR value greater than 0.0012W/kg
- Averaged Fast SAR: Polynomial fit
- Electronics: DAE4 Sn1446; Calibrated: 2014-08-27
- Probe: EX3DV4 - SN7323; ConvF(7.38, 7.38, 7.38); Calibrated: 2014-12-05;
- Sensor-Surface: 4mm (Mechanical Surface Detection)
- Phantom: SAM Phantom CRP v5.0(Middle); Type: QD000P40CD; Serial: TP:1847

**Head/Pin=100 mW 2/Area Scan (81x71x1):** Interpolated grid:  $dx=1.200 \text{ mm}$ ,  $dy=1.200 \text{ mm}$

Reference Value = 66.35 V/m; Power Drift = -0.03 dB

**Fast SAR: SAR(1 g) = 5.48 W/kg; SAR(10 g) = 2.47 W/kg**

Maximum value of SAR (interpolated) = 6.51 W/kg

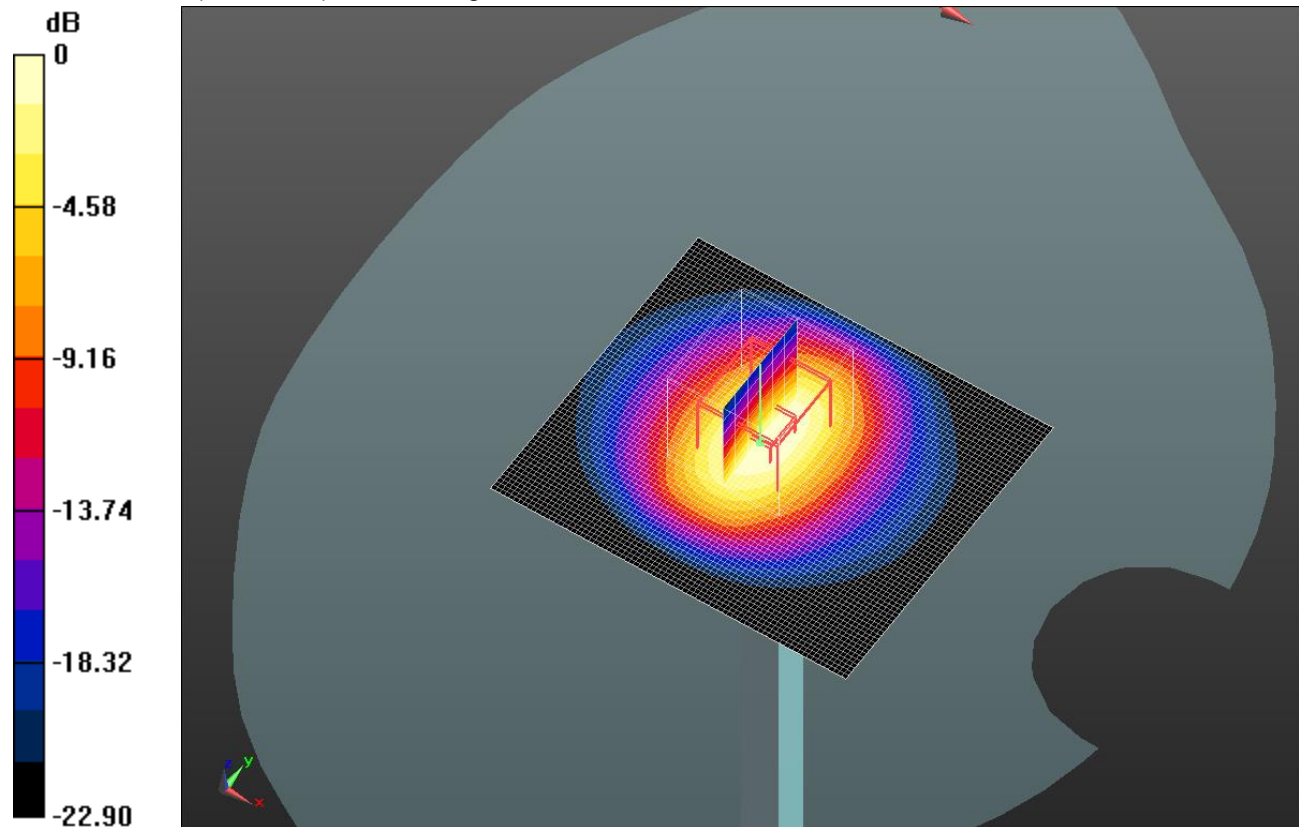
**Head/Pin=100 mW 2/Zoom Scan (7x7x7) (7x7x7)/Cube 0:** Measurement grid:  $dx=5\text{mm}$ ,  $dy=5\text{mm}$ ,  $dz=5\text{mm}$

Reference Value = 66.35 V/m; Power Drift = -0.03 dB

Peak SAR (extrapolated) = 11.7 W/kg

**SAR(1 g) = 5.43 W/kg; SAR(10 g) = 2.48 W/kg**

Maximum value of SAR (measured) = 6.12 W/kg



0 dB = 6.12 W/kg = 7.87 dBW/kg

### 20150516\_SystemPerformanceCheck-D2450V2 SN 960

Frequency: 2450 MHz; Duty Cycle: 1:1

**Head/Pin=100 mW 2/Z Scan (1x1x21):** Measurement grid: dx=20mm, dy=20mm, dz=5mm  
Maximum value of SAR (measured) = 9.00 W/kg

