

VIVALTO5M-E3
#8-1

>PC.ABS<



microSD

SIM2

SIM1

SAMSUNG MOBILE PHONE
MODEL : SM-G316HU/DD
FCC ID : A3LSMG316HU
SSN : -G316HU/DDGSMH
RATED : 3.8 V --- ; 1500 mA
MADE BY SAMSUNG
SAMSUNG, YATELEY, GU46 6GG. UK
CE0168
IMEI : 356662/06/003000/4
IMEI : 356663/06/003000/2
S/N : RV1FB163DPV

SAMSUNG

CELL MADE IN JAPAN, ASSEMBLED IN CHINA
BATTERIE FABRIQUÉ AU JAPON, ASSEMBLÉ EN CHINE
ENSAMBLADO EN CHINA / MONTADO NA CHINA
中國製造

3.8 V Li-ion BATTERY 3.8 V Li-ion BATTERIE 5.70 Wh
3,8 V Li-ion BATERÍA 3,8 V Li-ion BATERIA 5,70 Wh
CHARGE VOLTAGE : 4.35 V / 電壓 3.8 V 鋰離子 電池



⊕ ⊖

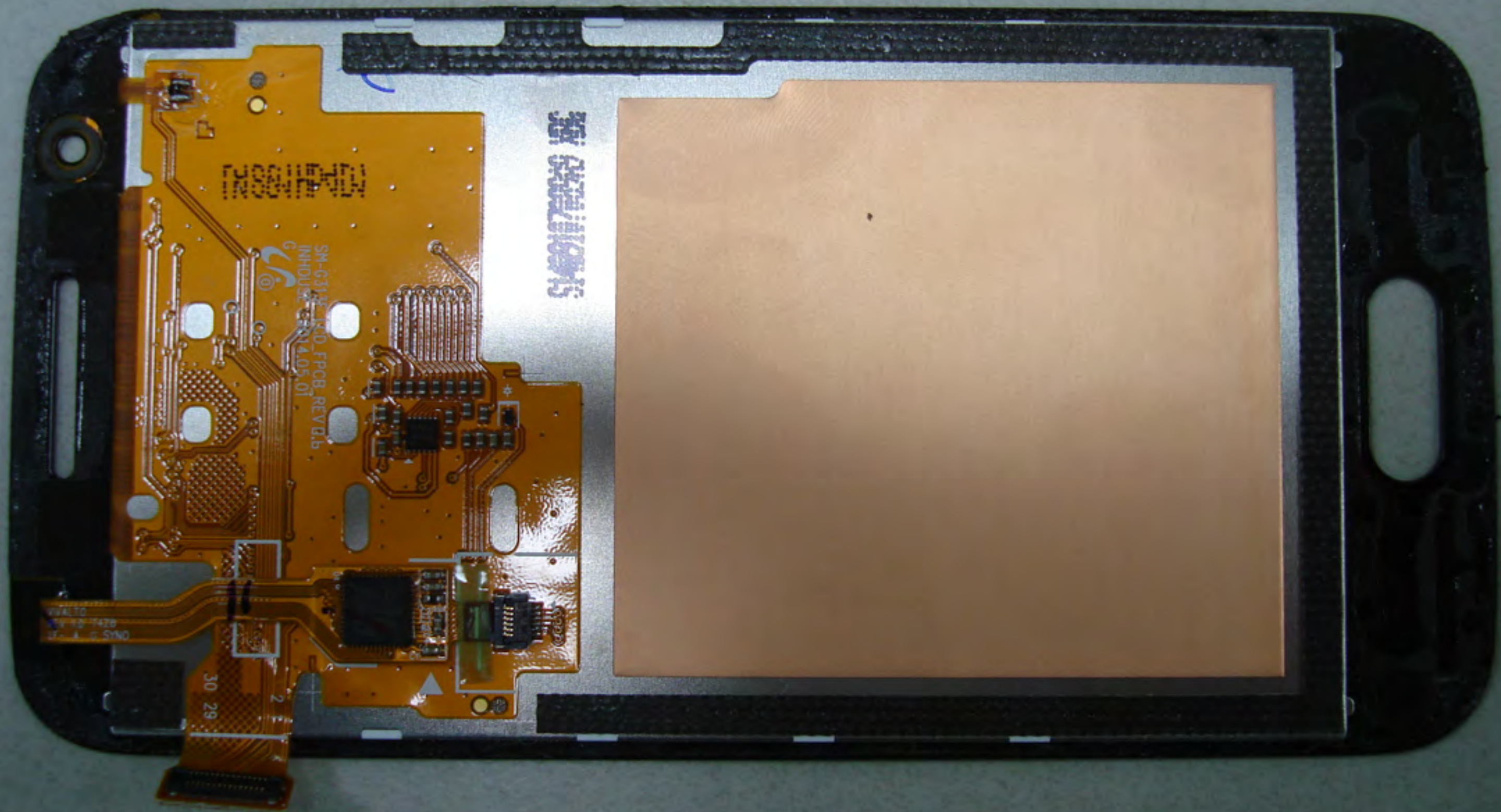
SAMSUNG

Please refer to manual before using battery.
Veuillez consulter le guide d'utilisation
avant d'utiliser la pile.
Referer-vous au mode d'emploi
avant d'utiliser la batterie.
Consulte o manual antes de usar a bateria.
Por favor lea el manual antes de utilizar la batería.
請按照說明書指示使用電池。

EB-BG313CBE 1500 mAh
S/N: TH1F9276S/2-B
生产日期: 2014.09.27



⊖ ⊕



SM-G3130-FPCB-REV0.6

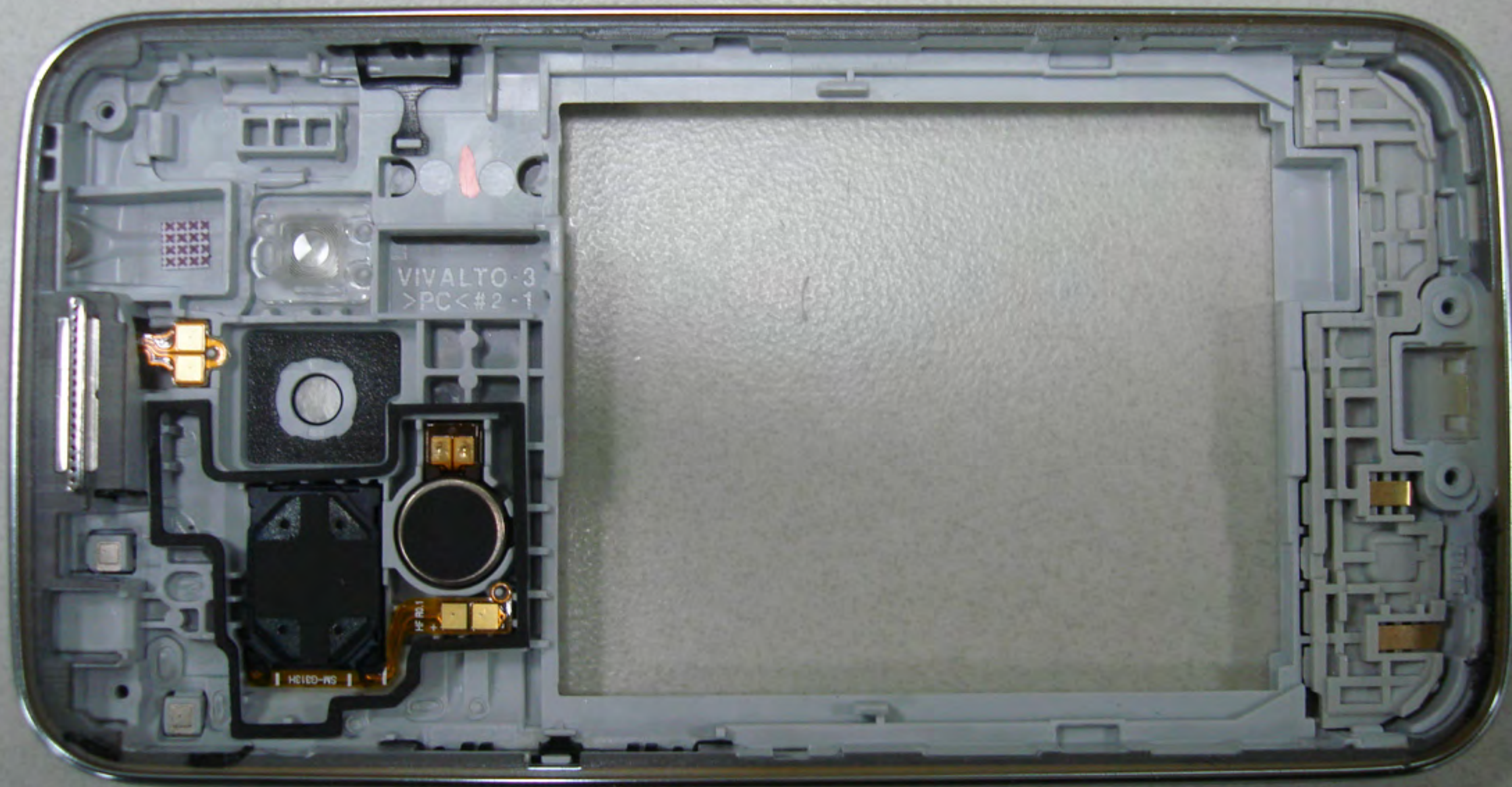
WALTO

SM-G3130-FPCB-REV0.6
INHOUSE-EN14.05.01

WALTO
SM-G3130-FPCB-REV0.6
INHOUSE-EN14.05.01

30 29

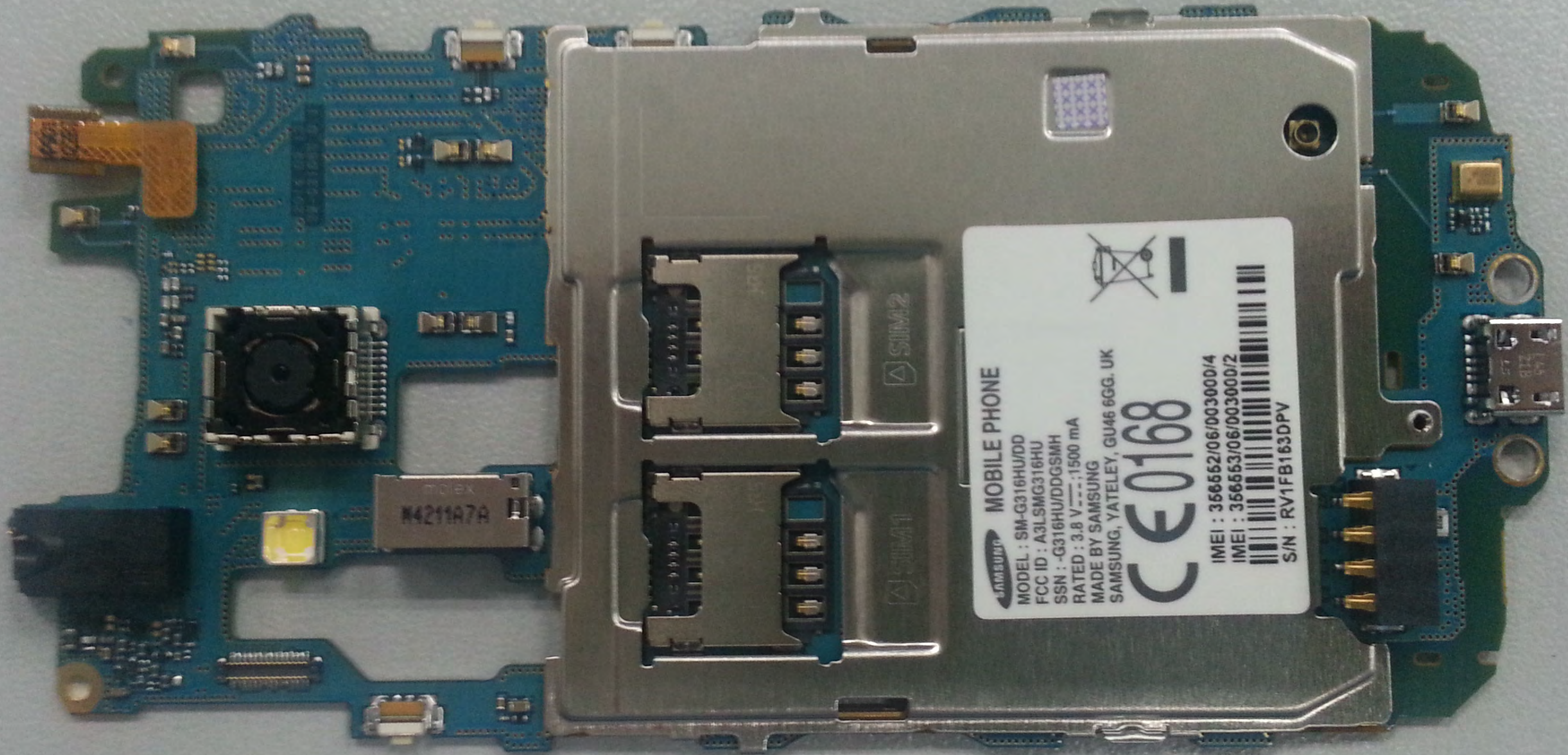




VIVALTO-3
>PC<#2-1

HC1ED-W5



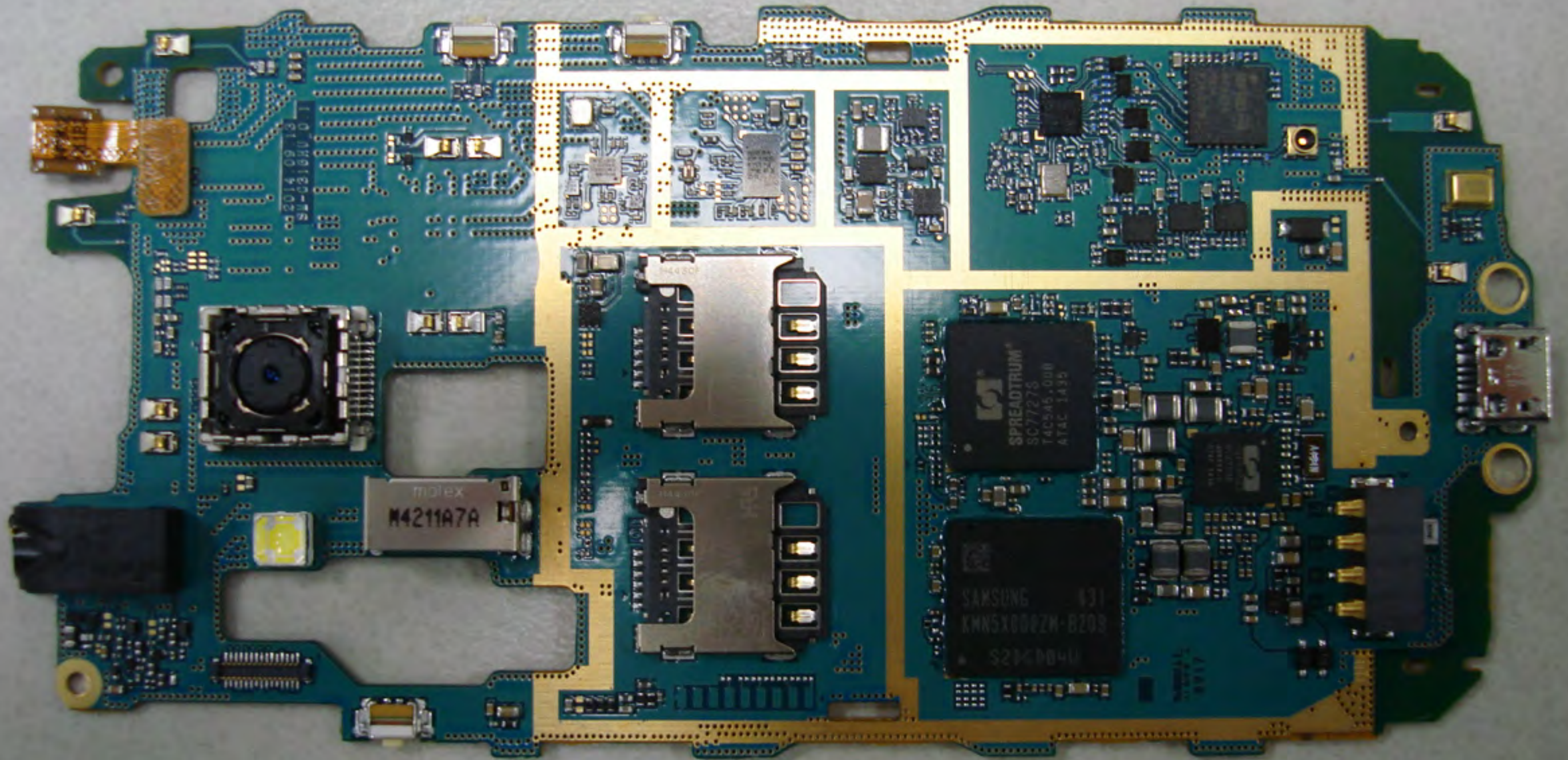


 **MOBILE PHONE**
 MODEL : SM-G316HU/DD
 FCC ID : A3L5MG316HU
 SSN : -G316HU/DDGSMH
 RATED : 3.8 V ---; 1500 mA
 MADE BY SAMSUNG
 SAMSUNG, YATELEY, GU46 6GG, UK
CE0168
 IMEI : 356652106/003000/4
 IMEI : 356653106/003000/2

 S/N : RV1FB163DPV


TCEK
M4211A7A





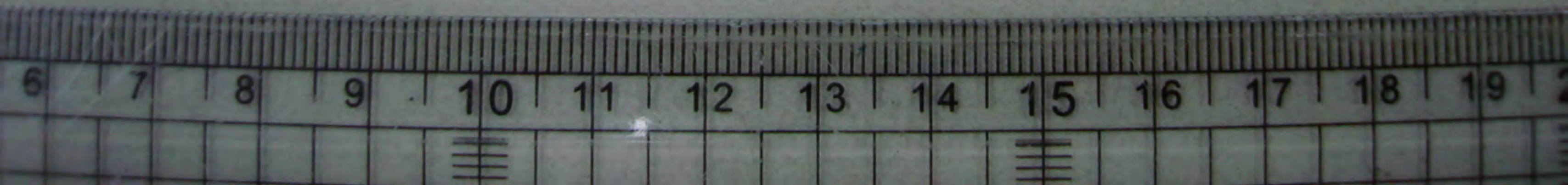
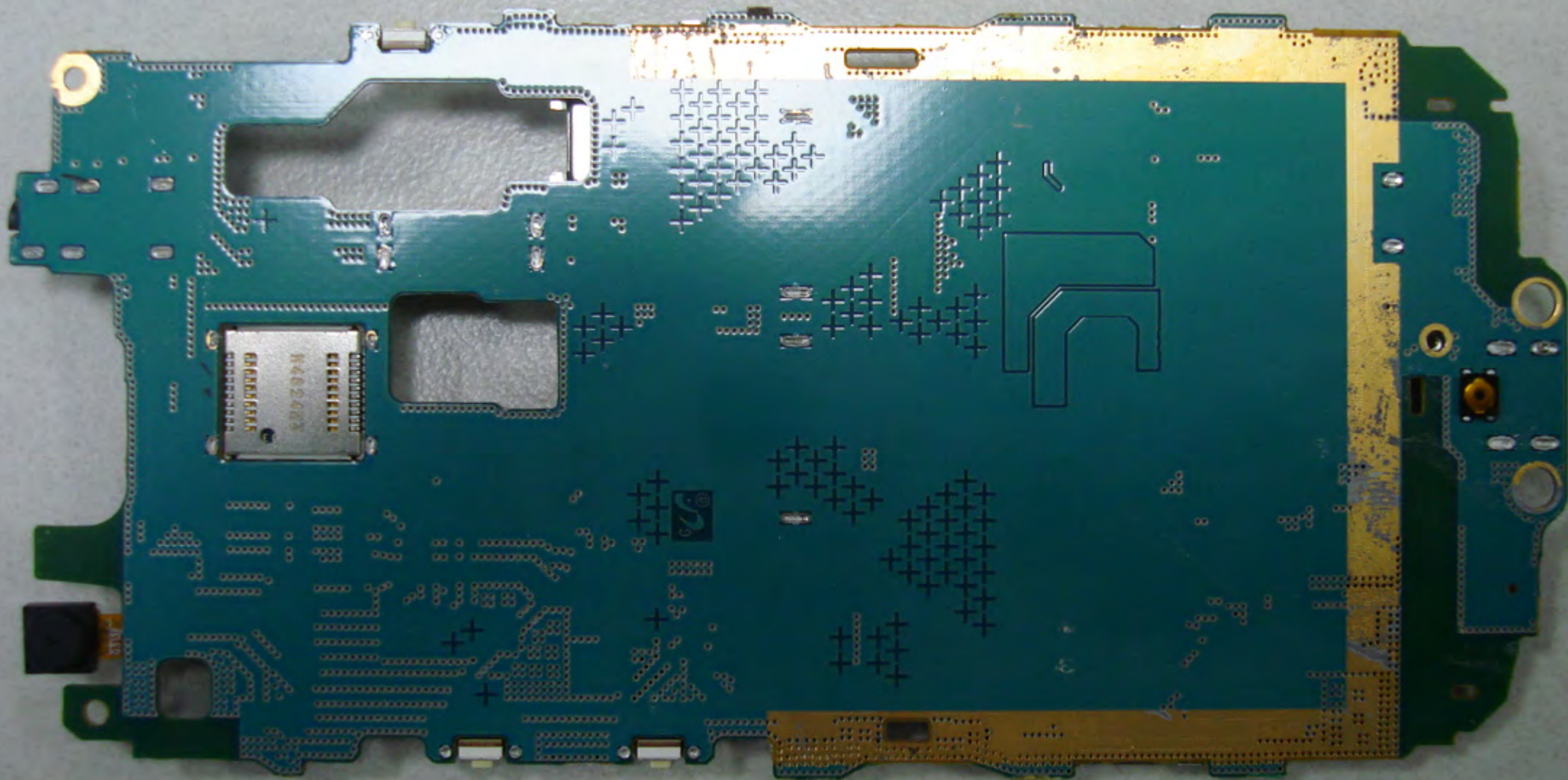
092014 0913
SU-0218RU-D-1

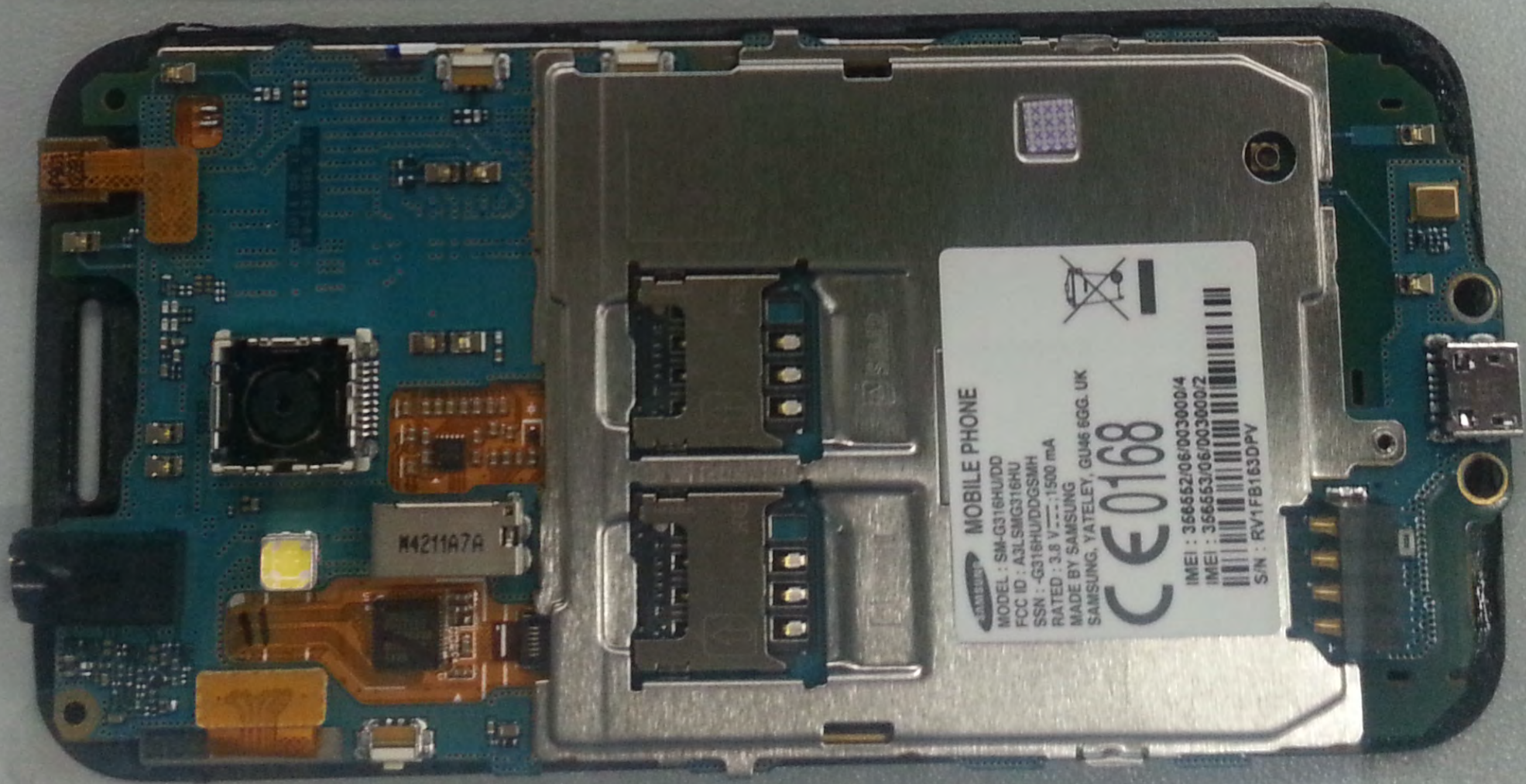
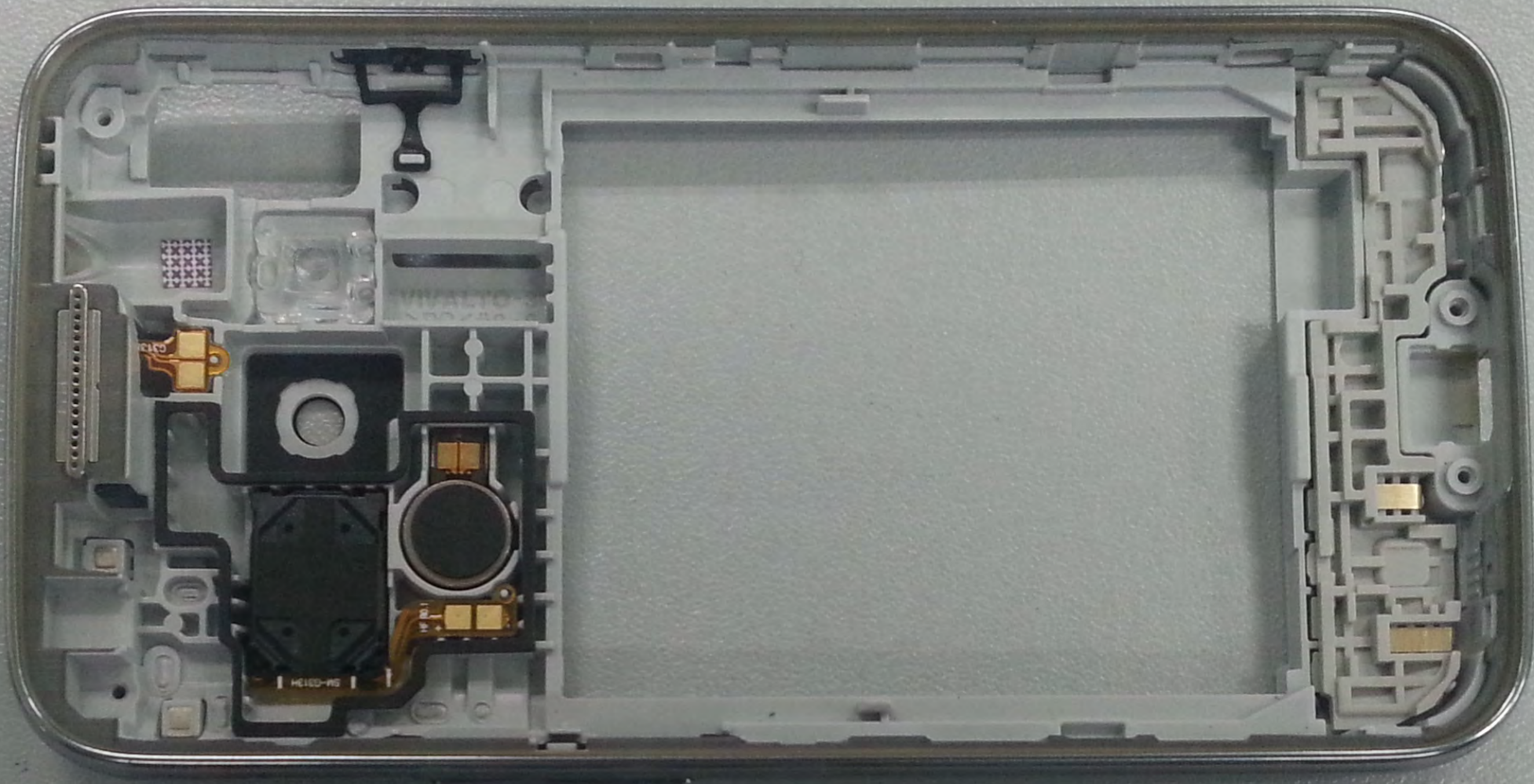
molex
M4211A7A

SPREADTRUM
SC7727S
T4C245.00R
ATAC 1435

SAMSUNG
KMX100P2M-B203
S2PG004U

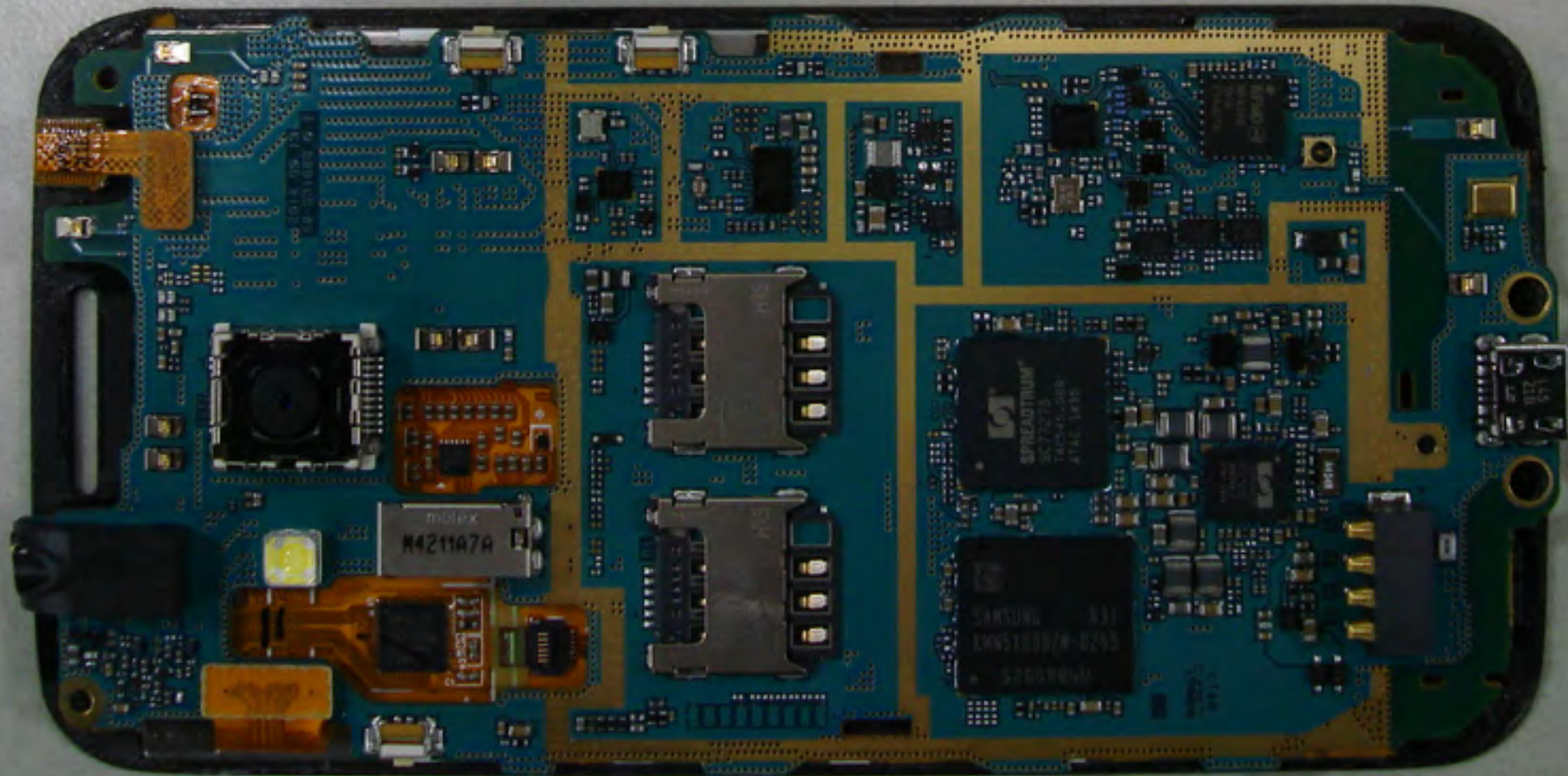
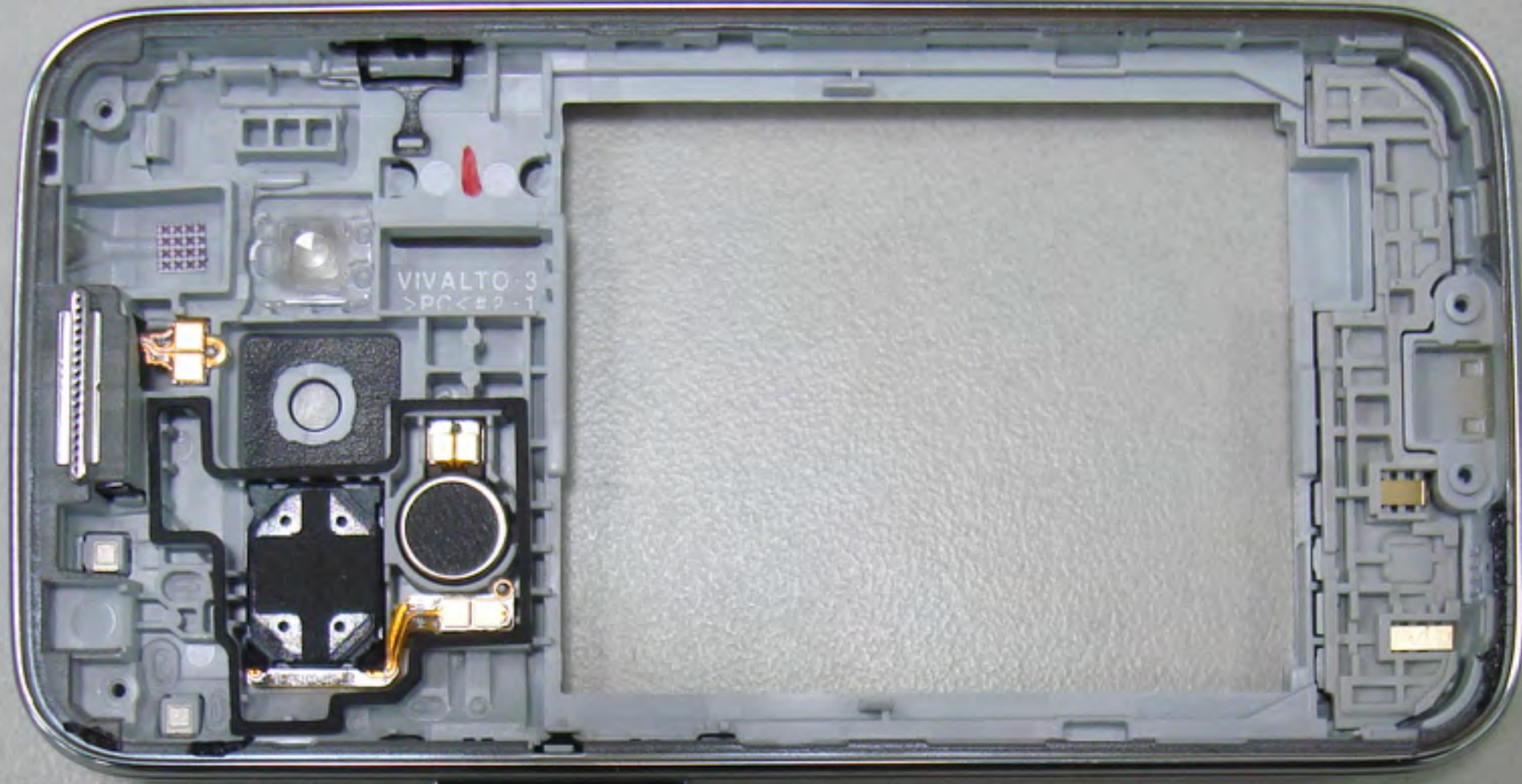
7 8 9 10 11 12 13 14 15 16 17 18 19

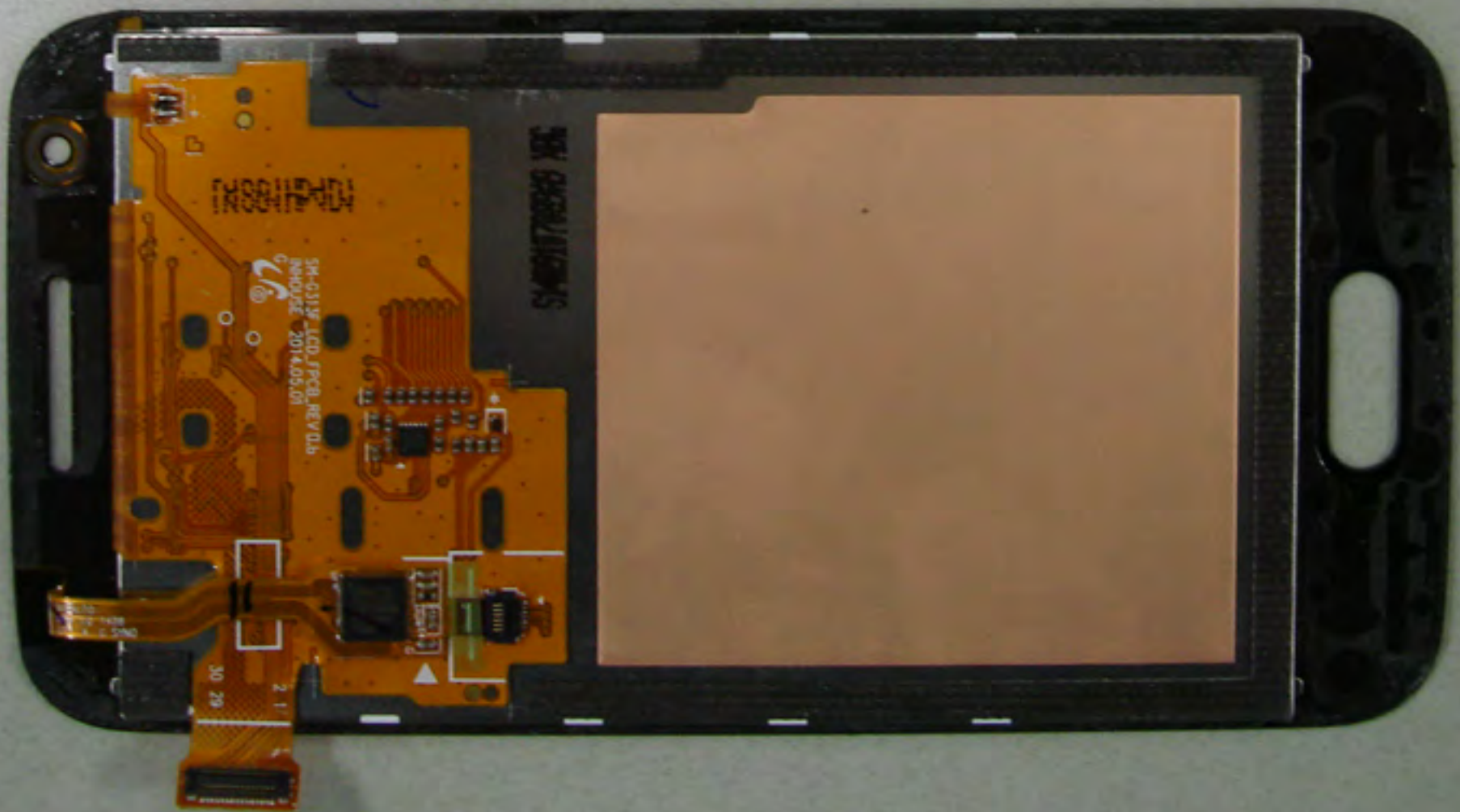
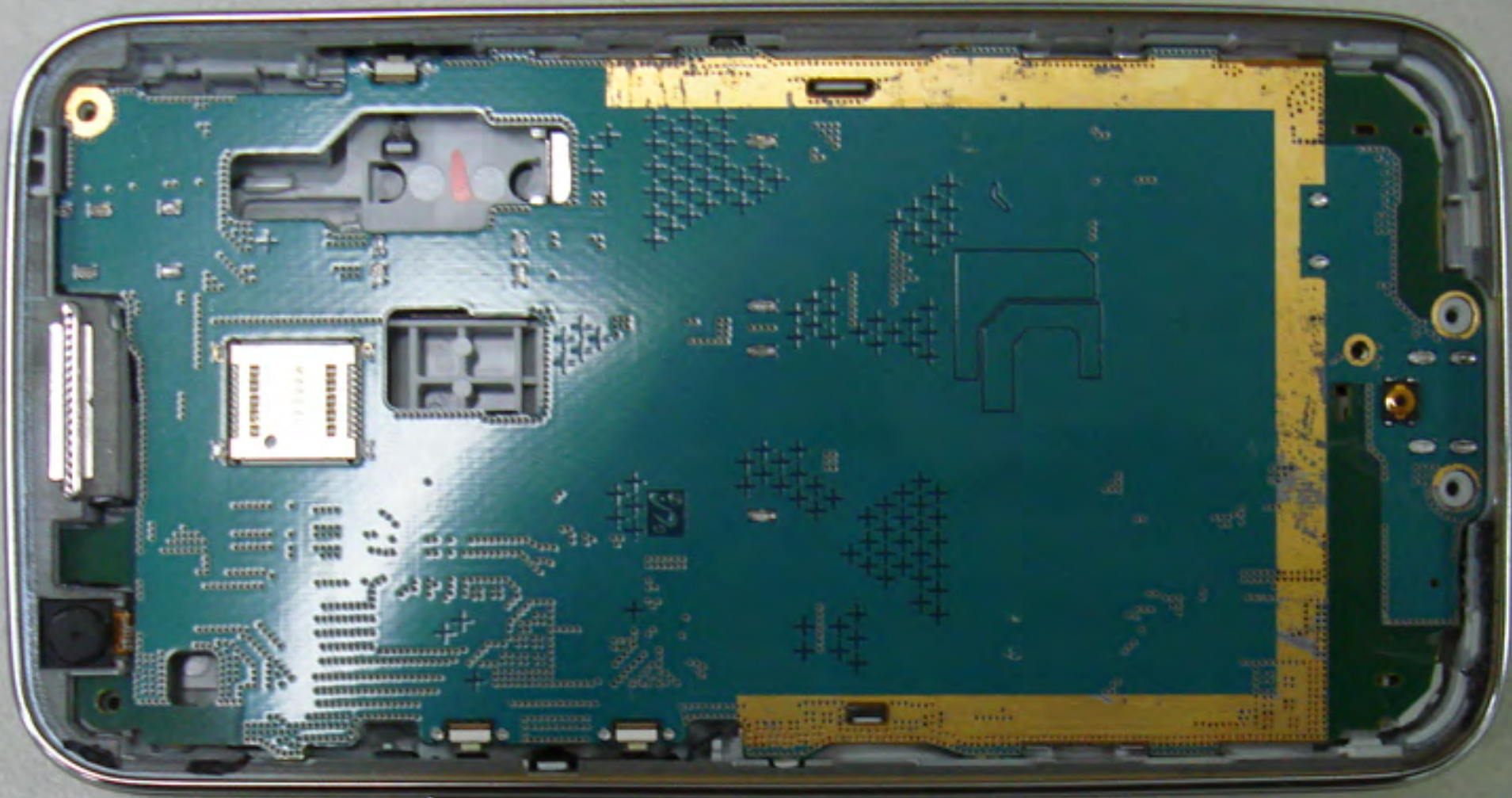


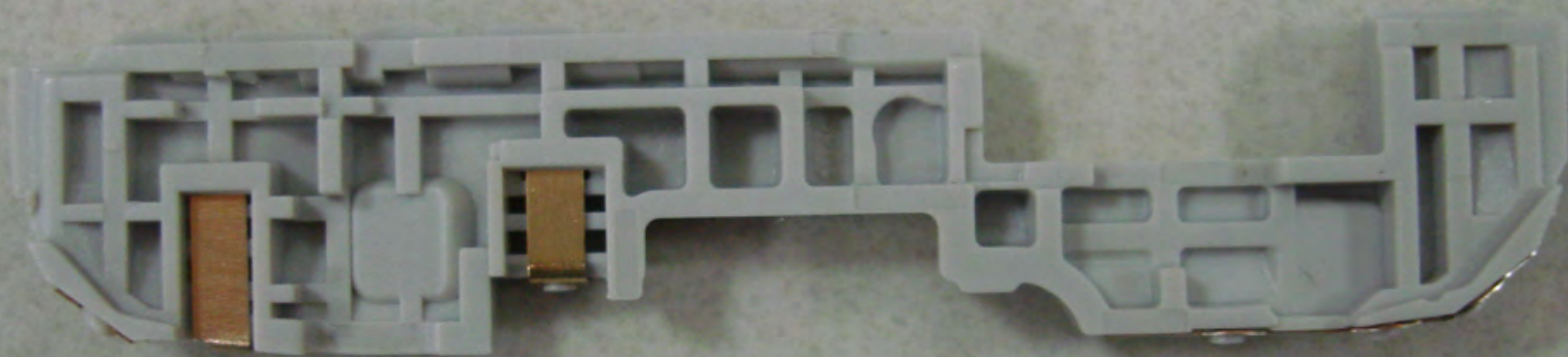


MOBILE PHONE
MODEL : SM-G316HUDD
FCC ID : A3LSMG316HU
SSN : -G316HUDDGSMH
RATED : 3.8 V --- : 1500 mA
MADE BY SAMSUNG
SAMSUNG, YATELEY, GU146 6GG, UK
CE 0168
IMEI : 3665206/003000/4
IMEI : 3665306/003000/2
S/N : RV1FB163DPV

M4211A7A











SUB #8-8

G4911C8080

9

10

11

12

13

14

15

16



VIVALTO5M-E3
#8-4

>PC.ABS<

9 10 11 12 13 14 15 16 17