

System Performance Check Report

Summary

Dipole	Frequency [MHz]	TSL	Power [dBm]	Dev. 1g [%]	Dev. 10g [%]	Dev. Peak [%]	Iso. Error [%]
D6.5GHzV2 - SN1010	6500.0	HSL	20.0	-5.1	-2.2	-18.4	-4.6

Exposure Conditions

Phantom Section, TSL	Test Distance [mm]	Band	Group, UID	Frequency [MHz], Channel Number	Conversion Factor	TSL Conductivity [S/m]	TSL Permittivity
Flat, HSL	5		CW, 0--	6500.0, 0	5.2	6.01	35.4

Hardware Setup

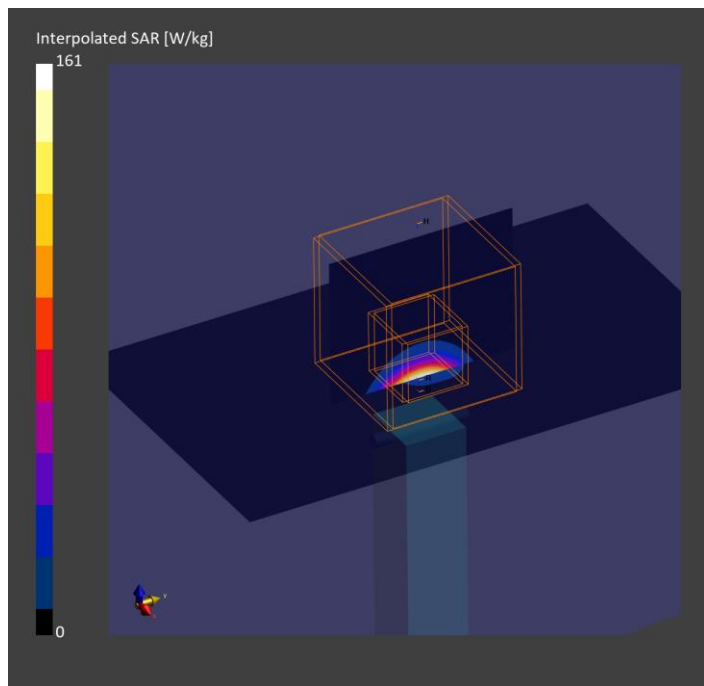
Phantom	TSL, Measured Date	Probe, Calibration Date	DAE, Calibration Date
Twin-SAM V8.0 (30deg probe tilt) - 2043	HBBL-600-10000 Charge:xxxx, 2023-Apr-25	EX3DV4 - SN7376, 2022-07-27	DAE4 Sn1494, 2022-07-18

Scans Setup

	Area Scan	Zoom Scan
Grid Extents [mm]	51.0 x 85.0	22.0 x 22.0 x 22.0
Grid Steps [mm]	8.5 x 8.5	3.4 x 3.4 x 1.4
Sensor Surface [mm]	3.0	1.4

Measurement Results

	Area Scan	Zoom Scan
Date	2023-04-25, 03:13	2023-04-25, 03:25
psSAR1g [W/kg]	23.9	26.9
psSAR10g [W/kg]	4.71	5.14
psAPD (1.0cm2, sq) [W/m2]		269
psAPD (4.0cm2, sq) [W/m2]		125
Power Drift [dB]	-0.02	-0.05



System Performance Check Report

Summary

Dipole	Frequency [MHz]	TSL	Power [dBm]	Dev. 1g [%]	Dev. 10g [%]	Dev. Peak [%]	Iso. Error [%]
D8GHzV2 – SN1012	8000.0	HSL	20.0	-6.9	-3.1	-16.7	-5.6

Exposure Conditions

Phantom Section, TSL	Test Distance [mm]	Band	Group, UID	Frequency [MHz], Channel Number	Conversion Factor	TSL Conductivity [S/m]	TSL Permittivity
Flat, HSL	5		CW, 0--	8000.0, 0	5.0	7.71	32.7

Hardware Setup

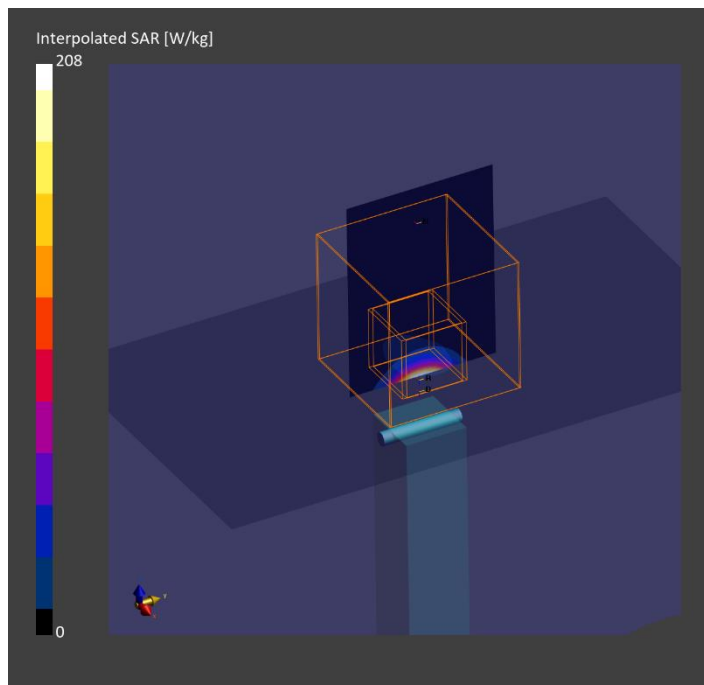
Phantom	TSL, Measured Date	Probe, Calibration Date	DAE, Calibration Date
Twin-SAM V8.0 (30deg probe tilt) – 2043	HBBL-600-10000 Charge:xxxx, 2023-Apr-25	EX3DV4 – SN7376, 2022-07-27	DAE4 Sn1494, 2022-07-18

Scans Setup

	Area Scan	Zoom Scan
Grid Extents [mm]	52.0 x 91.0	22.0 x 22.0 x 22.0
Grid Steps [mm]	6.5 x 6.5	2.7 x 2.7 x 1.3
Sensor Surface [mm]	3.0	1.4

Measurement Results

	Area Scan	Zoom Scan
Date	2023-04-25, 01:57	2023-04-25, 02:09
psSAR1g [W/kg]	28.8	24.9
psSAR10g [W/kg]	5.38	4.34
psAPD (1.0cm2, sq) [W/m2]		249
psAPD (4.0cm2, sq) [W/m2]		106
Power Drift [dB]	-0.01	0.07



System Performance Check Report

Summary

Dipole	Frequency [MHz]	TSL	Power [dBm]	Dev. 1g [%]	Dev. 10g [%]	Dev. Peak [%]	Iso. Error [%]
D6.5GHzV2 – SN1010	6500.0	HSL	20.0	-6.8	-1.7	-21.9	4.0

Exposure Conditions

Phantom Section, TSL	Test Distance [mm]	Band	Group, UID	Frequency [MHz], Channel Number	Conversion Factor	TSL Conductivity [S/m]	TSL Permittivity
Flat, HSL	5		CW, 0--	6500.0, 0	5.2	6.18	34.6

Hardware Setup

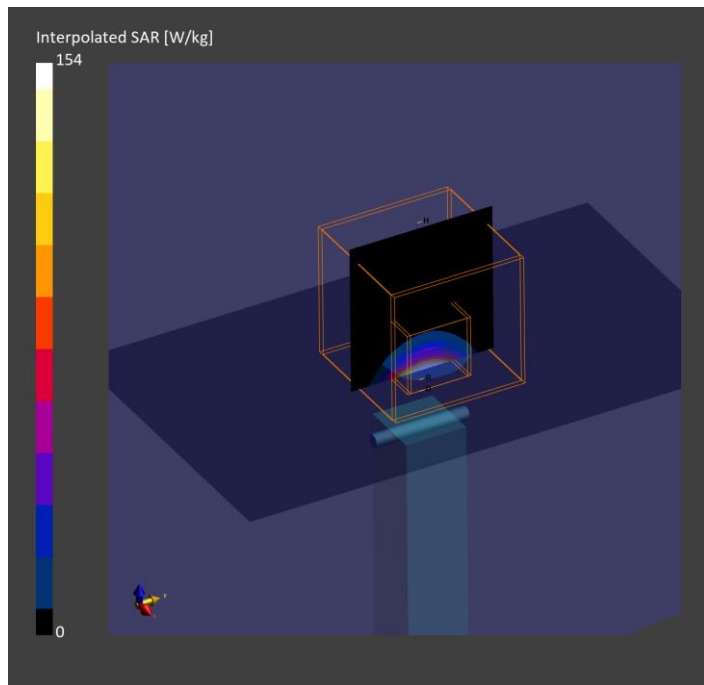
Phantom	TSL, Measured Date	Probe, Calibration Date	DAE, Calibration Date
Twin-SAM V8.0 (30deg probe tilt) – 2037	HBBL-600-10000 Charge:xxxx, 2023-Apr-14	EX3DV4 – SN7376, 2022-07-27	DAE4 Sn1468, 2022-08-18

Scans Setup

	Area Scan	Zoom Scan
Grid Extents [mm]	51.0 x 85.0	22.0 x 22.0 x 22.0
Grid Steps [mm]	8.5 x 8.5	3.4 x 3.4 x 1.4
Sensor Surface [mm]	3.0	1.4

Measurement Results

	Area Scan	Zoom Scan
Date	2023-04-14, 01:32	2023-04-14, 01:41
psSAR1g [W/kg]	22.3	26.5
psSAR10g [W/kg]	4.84	5.19
psAPD (1.0cm2, sq) [W/m2]		265
psAPD (4.0cm2, sq) [W/m2]		126
Power Drift [dB]	-0.03	-0.06



Measurement Report for Device, FRONT, Validation band, CW, Channel 10000 (10000.0 MHz)

Exposure Conditions

Phantom Section	Position, Test Distance [mm]	Band	Group, UID	Frequency [MHz], Channel Number	Conversion Factor
5G	FRONT, 10.00	Validation band	CW, 0--	10000.0, 10000	1.0

Hardware Setup

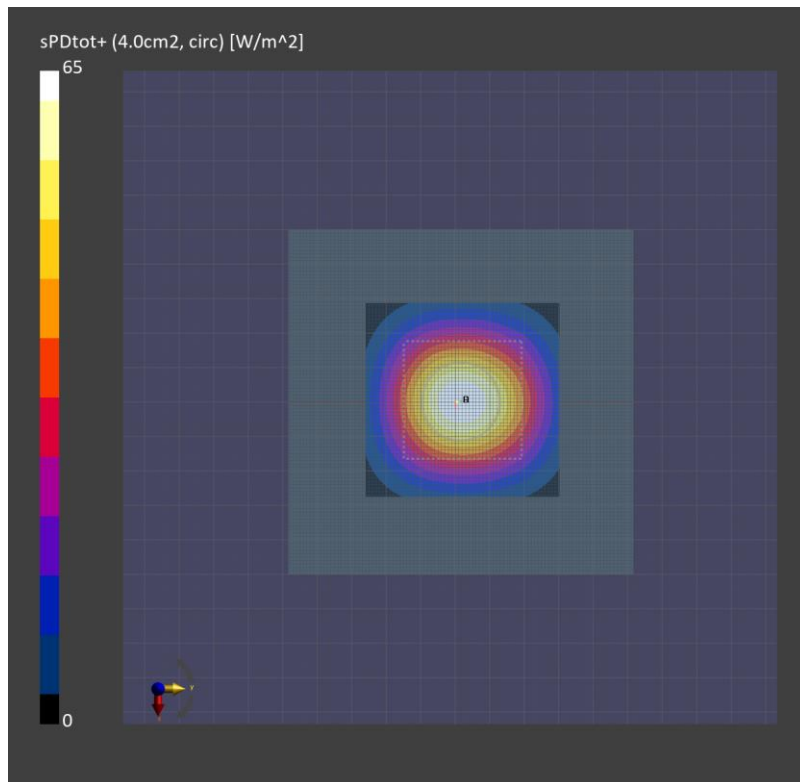
Phantom	Medium	Probe, Calibration Date	DAE, Calibration Date
mmWave - 1082	Air -	EUmmWV4 - SN9536_F1-55GHz, 2023-02-16	DAE4 Sn1670, 2022-06-07

Scans Setup

Scan Type	5G Scan
Grid Extents [mm]	60.0 x 60.0
Grid Steps [lambda]	0.125 x 0.125
Sensor Surface [mm]	10.0

Measurement Results

Scan Type	5G Scan
Avg. Area [cm ²]	4.00
psPDn+ [W/m ²]	64.7
psPDtot+ [W/m ²]	65.0
psPDmod+ [W/m ²]	65.3
E _{max} [V/m]	163
Power Drift [dB]	0.02



Measurement Report for Device, FRONT, Validation band, CW, Channel 10000 (10000.0 MHz)

Exposure Conditions

Phantom Section	Position, Test Distance [mm]	Band	Group, UID	Frequency [MHz], Channel Number	Conversion Factor
5G	FRONT, 10.00	Validation band	CW, 0--	10000.0, 10000	1.0

Hardware Setup

Phantom	Medium	Probe, Calibration Date	DAE, Calibration Date
mmWave - 1082	Air -	EUmmWV4 - SN9536_F1-55GHz, 2023-02-16	DAE4 Sn1670, 2022-06-07

Scans Setup

Scan Type	5G Scan
Grid Extents [mm]	60.0 x 60.0
Grid Steps [lambda]	0.125 x 0.125
Sensor Surface [mm]	10.0

Measurement Results

Scan Type	5G Scan
Avg. Area [cm ²]	4.00
psPDn+ [W/m ²]	59.6
psPDtot+ [W/m ²]	59.9
psPDmod+ [W/m ²]	60.3
E _{max} [V/m]	159
Power Drift [dB]	-0.03

