

Measurement Report for Device, CHEEK, U-NII-7, IEEE 802.11ax (160MHz, MCS0, 99pc duty cycle), Channel 143 (6665.0 MHz)

Exposure Conditions

Phantom Section, TSL	Position, Test Distance [mm]	Band	Group, UID	Frequency [MHz], Channel Number	Conversion Factor	TSL Conductivity [S/m]	TSL Permittivity
RightHead, HSL	CHEEK, 0.00	U-NII-7	WLAN, 10755-AAC	6665.0, 143	5.2	6.34	34.2

Hardware Setup

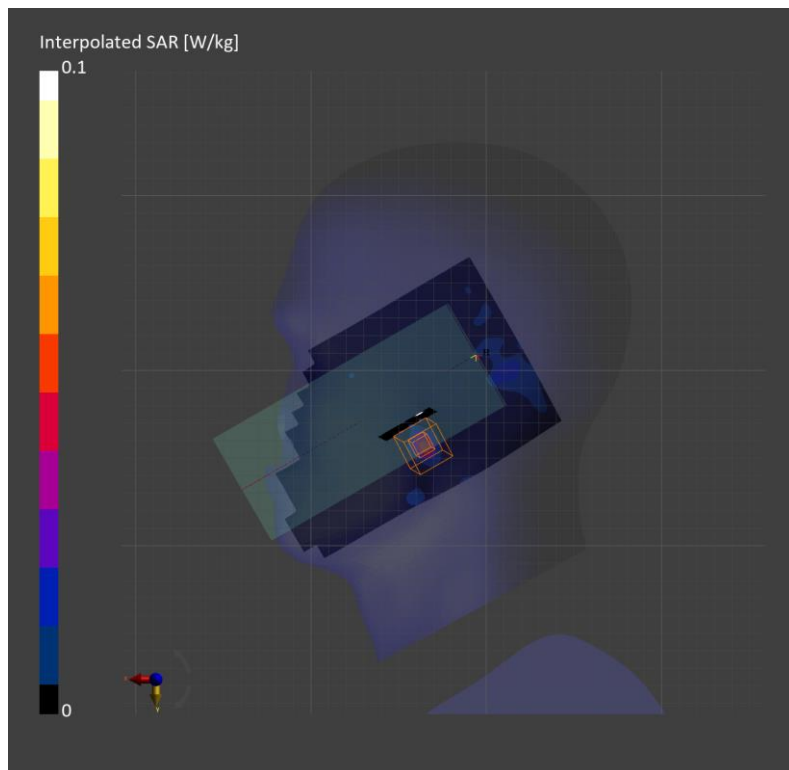
Phantom	TSL, Measured Date	Probe, Calibration Date	DAE, Calibration Date
Twin-SAM V8.0 (30deg probe tilt) - 2037	HBBL-600-10000 Charge:xxxx, 2023-Apr-13	EX3DV4 - SN7376, 2022-07-27	DAE4 Sn1468, 2022-08-18

Scans Setup

	Area Scan	Zoom Scan
Grid Extents [mm]	102.0 x 187.0	22.0 x 22.0 x 22.0
Grid Steps [mm]	8.5 x 8.5	3.4 x 3.4 x 1.4
Sensor Surface [mm]	3.0	1.4

Measurement Results

	Area Scan	Zoom Scan
psSAR1g [W/Kg]	0.038	0.044
psSAR10g [W/Kg]	0.008	0.010
psAPD (1.0cm2, sq) [W/m2]		0.439
psAPD (4.0cm2, sq) [W/m2]		0.254
Power Drift [dB]	n/a	-0.08
M2/M1 [%]		66.0
Dist 3dB Peak [mm]		5.8



Measurement Report for Device, BACK, U-NII-8, IEEE 802.11ax (160MHz, MCS0, 99pc duty cycle), Channel 207 (6985.0 MHz)

Exposure Conditions

Phantom Section, TSL	Position, Test Distance [mm]	Band	Group, UID	Frequency [MHz], Channel Number	Conversion Factor	TSL Conductivity [S/m]	TSL Permittivity
Flat, HSL	BACK, 10.00	U-NII-8	WLAN, 10755-AAC	6985.0, 207	5.2	6.65	33.7

Hardware Setup

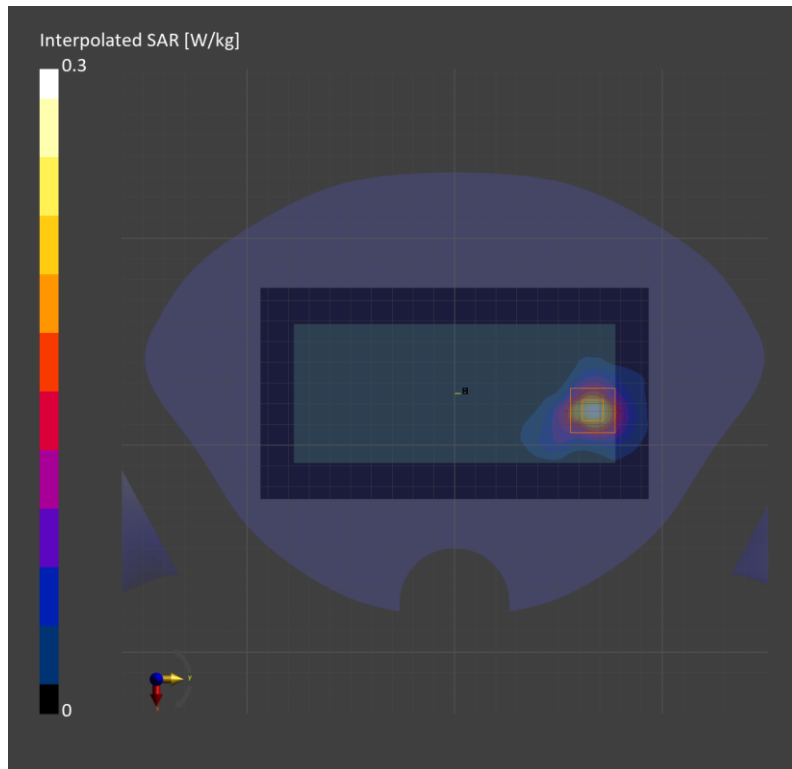
Phantom	TSL, Measured Date	Probe, Calibration Date	DAE, Calibration Date
Twin-SAM V8.0 (30deg probe tilt) - 2043	HBBL-600-10000 Charge:xxxx, 2023-May-03	EX3DV4 - SN7376, 2022-07-27	DAE4 Sn1494, 2022-07-18

Scans Setup

	Area Scan	Zoom Scan
Grid Extents [mm]	102.0 x 187.0	22.0 x 22.0 x 22.0
Grid Steps [mm]	8.5 x 8.5	3.4 x 3.4 x 1.4
Sensor Surface [mm]	3.0	1.4

Measurement Results

	Area Scan	Zoom Scan
psSAR1g [W/Kg]	0.229	0.229
psSAR10g [W/Kg]	0.076	0.077
psAPD (1.0cm2, sq) [W/m2]		2.29
psAPD (4.0cm2, sq) [W/m2]		1.74
Power Drift [dB]	0.02	-0.18
M2/M1 [%]		51.1
Dist 3dB Peak [mm]		9.1



Measurement Report for Device, EDGE RIGHT, U-NII-5, IEEE 802.11 ax (160MHz, MCS0, 99pc duty cycle), Channel 15 (6025.0 MHz)

Exposure Conditions

Phantom Section, TSL	Position, Test Distance [mm]	Band	Group, UID	Frequency [MHz], Channel Number	Conversion Factor	TSL Conductivity [S/m]	TSL Permittivity
Flat, HSL	EDGE RIGHT, 0.00	U-NII-5	WLAN, 10743-AAC	6025.0, 15	5.2	5.41	35.1

Hardware Setup

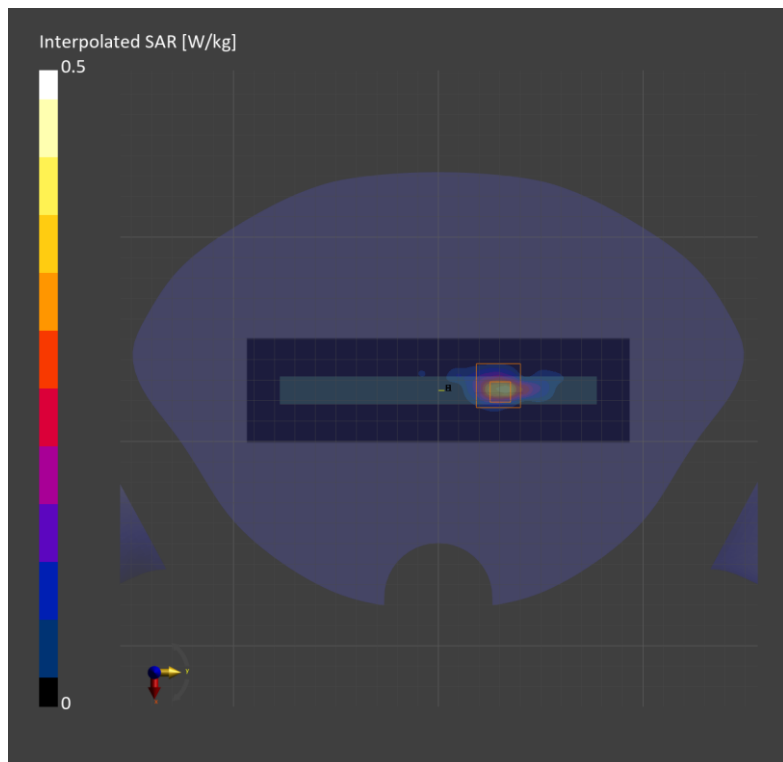
Phantom	TSL, Measured Date	Probe, Calibration Date	DAE, Calibration Date
Twin-SAM V8.0 (30deg probe tilt) - 2037	HBBL-600-10000 Charge:xxxx, 2023-Apr-12	EX3DV4 - SN7376, 2022-07-27	DAE4 Sn1468, 2022-08-18

Scans Setup

	Area Scan	Zoom Scan
Grid Extents [mm]	51.0 x 187.0	22.0 x 22.0 x 22.0
Grid Steps [mm]	8.5 x 8.5	3.4 x 3.4 x 1.4
Sensor Surface [mm]	3.0	1.4

Measurement Results

	Area Scan	Zoom Scan
psSAR1g [W/Kg]	0.267	0.289
psSAR10g [W/Kg]	0.070	0.072
psAPD (1.0cm2, sq) [W/m2]		2.89
psAPD (4.0cm2, sq) [W/m2]		1.69
Power Drift [dB]	-0.18	-0.01
M2/M1 [%]		55.4
Dist 3dB Peak [mm]		3.5



Measurement Report for SM-F946U\_UMPC, FRONT, U-NII-8, IEEE 802.11ax (160MHz, MCS0, 99pc duty cycle), Channel 207 (6985.0 MHz)

Exposure Conditions

Phantom Section, TSL	Position, Test Distance [mm]	Band	Group, UID	Frequency [MHz], Channel Number	Conversion Factor	TSL Conductivity [S/m]	TSL Permittivity
Flat, HSL	FRONT, 0.00	U-NII-8	WLAN, 10743-AAC	6985.0, 207	5.2	6.73	33.8

Hardware Setup

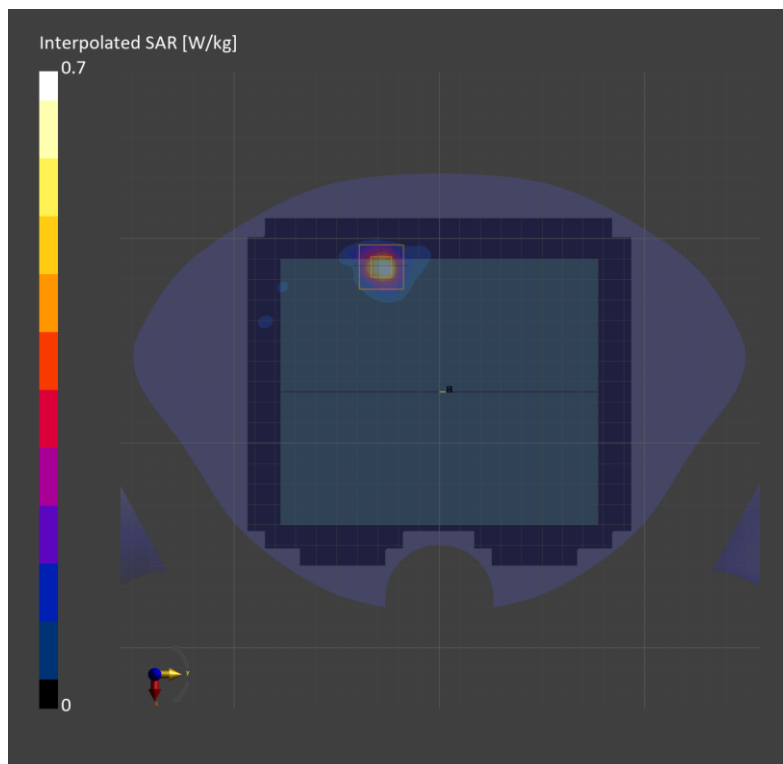
Phantom	TSL, Measured Date	Probe, Calibration Date	DAE, Calibration Date
Twin-SAM V8.0 (30deg probe tilt) - 2037	HBBL-600-10000 Charge:xxxx, 2023-Apr-14	EX3DV4 - SN7376, 2022-07-27	DAE4 Sn1468, 2022-08-18

Scans Setup

	Area Scan	Zoom Scan
Grid Extents [mm]	170.0 x 187.0	22.0 x 22.0 x 22.0
Grid Steps [mm]	8.5 x 8.5	3.4 x 3.4 x 1.4
Sensor Surface [mm]	3.0	1.4

Measurement Results

	Area Scan	Zoom Scan
psSAR1g [W/Kg]	0.512	0.549
psSAR10g [W/Kg]	0.139	0.139
psAPD (1.0cm2, sq) [W/m2]		5.49
psAPD (4.0cm2, sq) [W/m2]		3.25
Power Drift [dB]	0.07	-0.08
M2/M1 [%]		53.7
Dist 3dB Peak [mm]		5.5



Measurement Report for SM-F946U\_UMPC, BACK, U-NII-8, IEEE 802.11ax (160MHz, MCS0, 99pc duty cycle), Channel 207 (6985.0 MHz)

Exposure Conditions

Phantom Section, TSL	Position, Test Distance [mm]	Band	Group, UID	Frequency [MHz], Channel Number	Conversion Factor	TSL Conductivity [S/m]	TSL Permittivity
Flat, HSL	BACK, 10.00	U-NII-8	WLAN, 10743-AAC	6985.0, 207	5.2	6.68	33.7

Hardware Setup

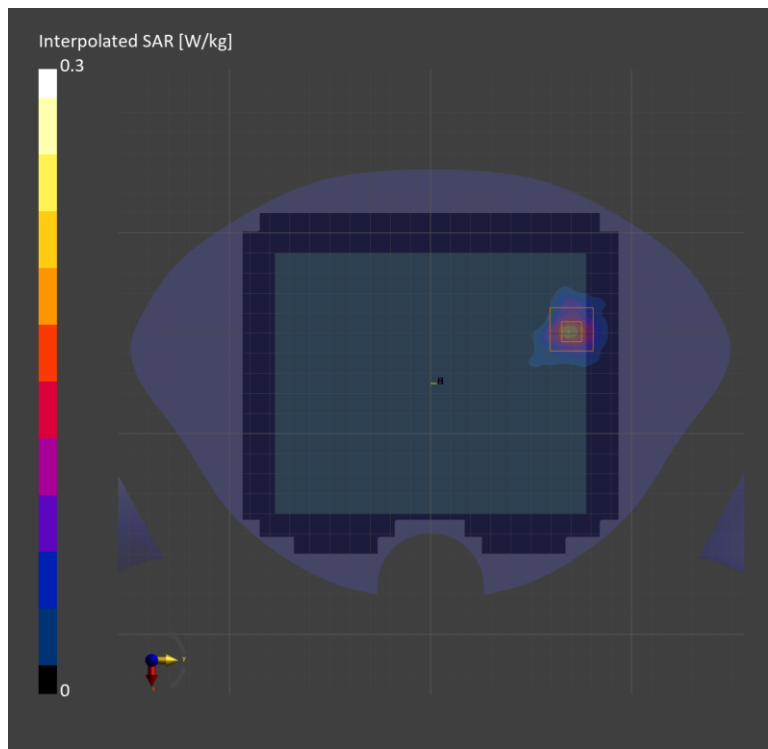
Phantom	TSL, Measured Date	Probe, Calibration Date	DAE, Calibration Date
Twin-SAM V8.0 (30deg probe tilt) - 2037	HBBL-600-10000 Charge:xxxx, 2023-Apr-13	EX3DV4 - SN7376, 2022-07-27	DAE4 Sn1468, 2022-08-18

Scans Setup

	Area Scan	Zoom Scan
Grid Extents [mm]	170.0 x 187.0	22.0 x 22.0 x 22.0
Grid Steps [mm]	8.5 x 8.5	3.4 x 3.4 x 1.4
Sensor Surface [mm]	3.0	1.4

Measurement Results

	Area Scan	Zoom Scan
psSAR1g [W/Kg]	0.154	0.171
psSAR10g [W/Kg]	0.048	0.058
psAPD (1.0cm2, sq) [W/m2]		1.71
psAPD (4.0cm2, sq) [W/m2]		1.32
Power Drift [dB]	-0.80	0.04
M2/M1 [%]		53.1
Dist 3dB Peak [mm]		9.2



Measurement Report for Device, BACK, Custom Band, CW, Channel 6489600 (6489.6 MHz)

Exposure Conditions

Phantom Section, TSL	Position, Test Distance [mm]	Band	Group, UID	Frequency [MHz], Channel Number	Conversion Factor	TSL Conductivity [S/m]	TSL Permittivity
Flat, HSL	BACK, 0.00	Custom Band	CW, 0--	6489.6, 6489600	5.2	5.91	33.2

Hardware Setup

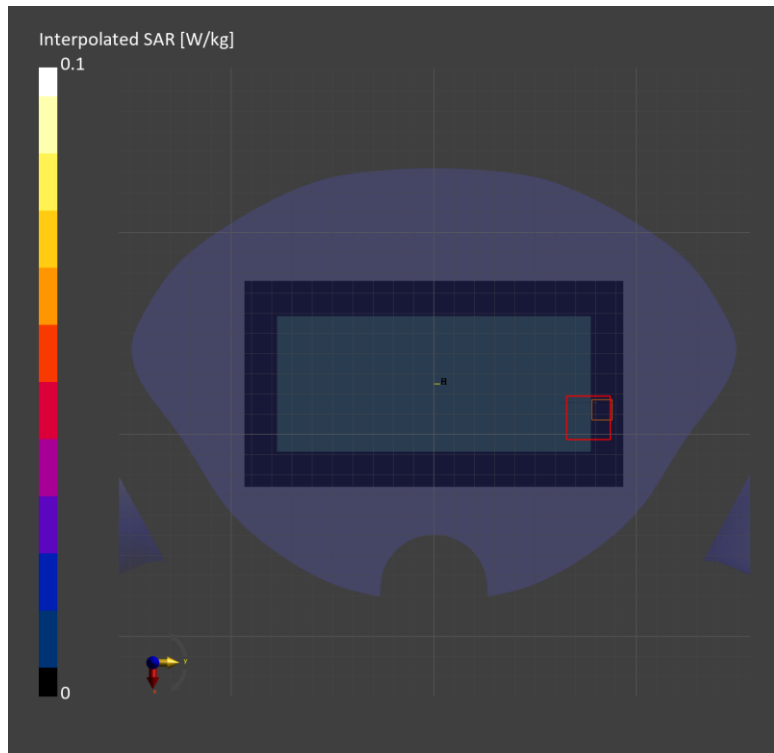
Phantom	TSL, Measured Date	Probe, Calibration Date	DAE, Calibration Date
Twin-SAM V8.0 (30deg probe tilt) - 2043	HBBL-600-10000 Charge:xxxx, 2023-Apr-20	EX3DV4 - SN7376, 2022-07-27	DAE4 Sn1494, 2022-07-18

Scans Setup

	Area Scan	Zoom Scan
Grid Extents [mm]	102.0 x 187.0	27.2 x 27.2 x 22.0
Grid Steps [mm]	8.5 x 8.5	3.4 x 3.4 x 1.4
Sensor Surface [mm]	3.0	1.4

Measurement Results

	Area Scan	Zoom Scan
psSAR1g [W/Kg]	0	0.002
psSAR10g [W/Kg]	0	0
psAPD (1.0cm2, sq) [W/m2]		0.016
psAPD (4.0cm2, sq) [W/m2]		0.015
Power Drift [dB]	0	0
M2/M1 [%]		n/a
Dist 3dB Peak [mm]		1.4



Measurement Report for Device, EDGE RIGHT, Custom Band, CW, Channel 7987200 (7987.2 MHz)

Exposure Conditions

Phantom Section, TSL	Position, Test Distance [mm]	Band	Group, UID	Frequency [MHz], Channel Number	Conversion Factor	TSL Conductivity [S/m]	TSL Permittivity
Flat, HSL	EDGE RIGHT, 0.00	Custom Band	CW, 0--	7987.2, 7987200	5.0	7.99	32.3

Hardware Setup

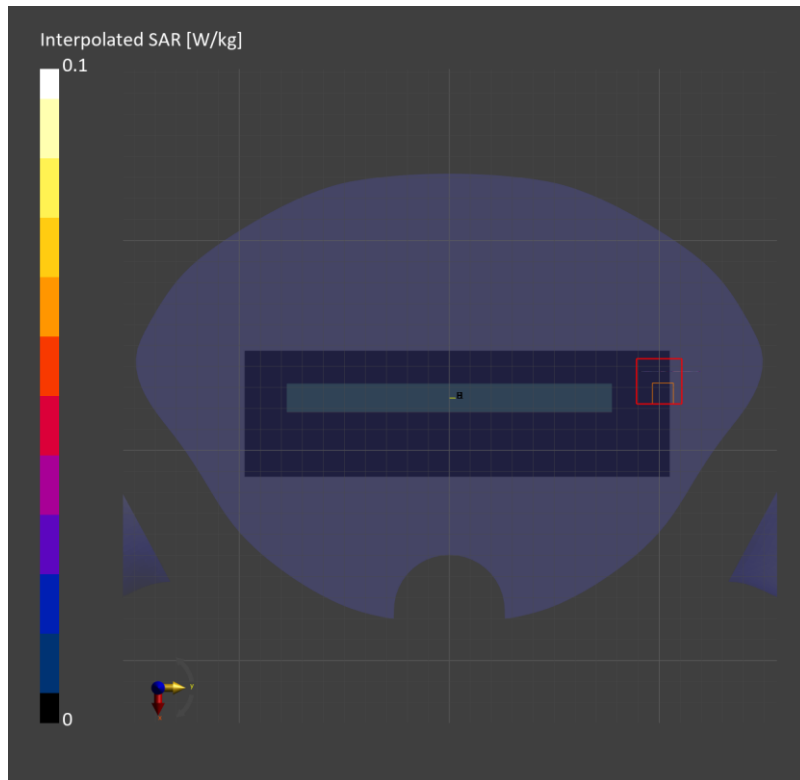
Phantom	TSL, Measured Date	Probe, Calibration Date	DAE, Calibration Date
Twin-SAM V8.0 (30deg probe tilt) - 2043	HBBL-600-10000 Charge:xxxx, 2023-Apr-21	EX3DV4 - SN7376, 2022-07-27	DAE4 Sn1494, 2022-07-18

Scans Setup

	Area Scan	Zoom Scan
Grid Extents [mm]	45.0 x 195.0	24.0 x 24.0 x 22.0
Grid Steps [mm]	7.5 x 7.5	3.0 x 3.0 x 1.4
Sensor Surface [mm]	3.0	1.4

Measurement Results

	Area Scan	Zoom Scan
psSAR1g [W/Kg]	0.004	0.003
psSAR10g [W/Kg]	0.001	0
psAPD (1.0cm2, sq) [W/m2]		0.034
psAPD (4.0cm2, sq) [W/m2]		0.019
Power Drift [dB]	0	0
M2/M1 [%]		63.7
Dist 3dB Peak [mm]		0.9



Measurement Report for SM-F946U\_UMPC, BACK, Custom Band, CW, Channel 6489600 (6489.6 MHz)

Exposure Conditions

Phantom Section, TSL	Position, Test Distance [mm]	Band	Group, UID	Frequency [MHz], Channel Number	Conversion Factor	TSL Conductivity [S/m]	TSL Permittivity
Flat, HSL	BACK, 0.00	Custom Band	CW, 0--	6489.6, 6489600	5.2	6.17	34.9

Hardware Setup

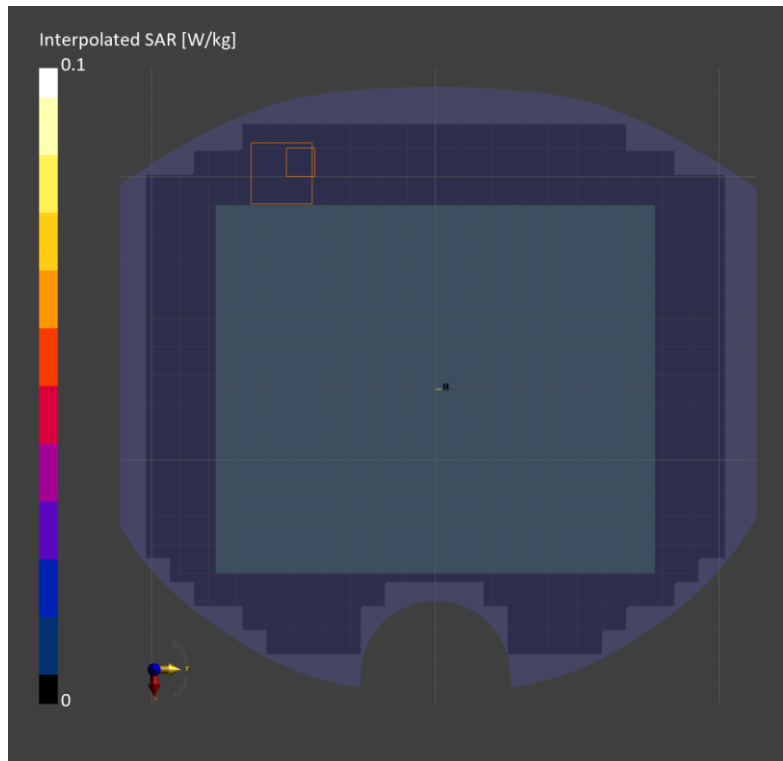
Phantom	TSL, Measured Date	Probe, Calibration Date	DAE, Calibration Date
Twin-SAM V8.0 (30deg probe tilt) - 2043	HBBL-600-10000 Charge:xxxx, 2023-Apr-21	EX3DV4 - SN7376, 2022-07-27	DAE4 Sn1494, 2022-07-18

Scans Setup

	Area Scan	Zoom Scan
Grid Extents [mm]	170.0 x 187.0	27.2 x 27.2 x 22.0
Grid Steps [mm]	8.5 x 8.5	3.4 x 3.4 x 1.4
Sensor Surface [mm]	3.0	1.4

Measurement Results

	Area Scan	Zoom Scan
psSAR1g [W/Kg]	0.123	0.002
psSAR10g [W/Kg]	0.019	0.001
psAPD (1.0cm2, sq) [W/m2]		0.020
psAPD (4.0cm2, sq) [W/m2]		0.025
Power Drift [dB]	0	0
M2/M1 [%]		23.5
Dist 3dB Peak [mm]		2.1





Measurement Report for SM-F946U\_UMPC, FRONT, Custom Band, CW, Channel 7987200 (7987.2 MHz)

Exposure Conditions

Phantom Section, TSL	Position, Test Distance [mm]	Band	Group, UID	Frequency [MHz], Channel Number	Conversion Factor	TSL Conductivity [S/m]	TSL Permittivity
Flat, HSL	FRONT, 0.00	Custom Band	CW, 0--	7987.2, 7987200	5.0	7.70	32.7

Hardware Setup

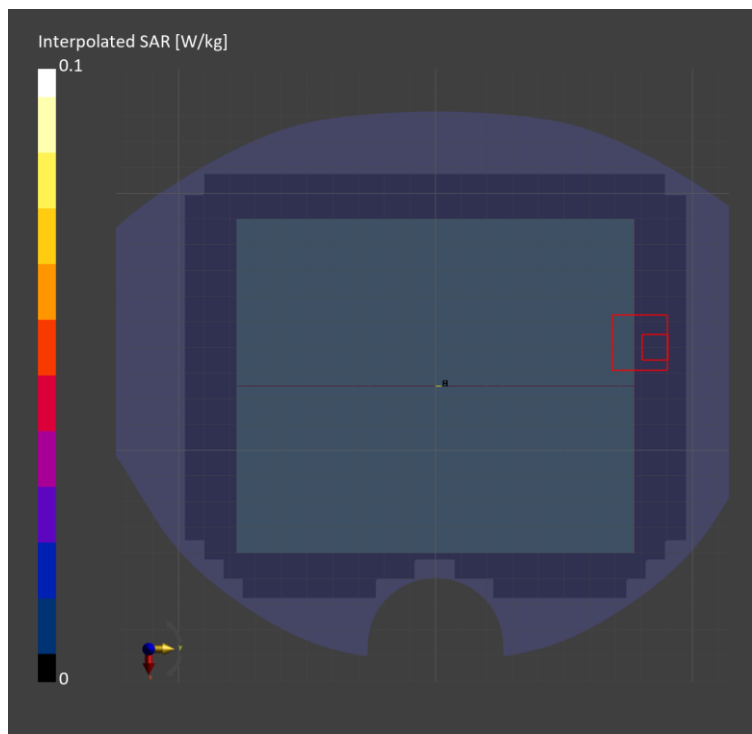
Phantom	TSL, Measured Date	Probe, Calibration Date	DAE, Calibration Date
Twin-SAM V8.0 (30deg probe tilt) - 2043	HBBL-600-10000 Charge:xxxx, 2023-Apr-25	EX3DV4 - SN7376, 2022-07-27	DAE4 Sn1494, 2022-07-18

Scans Setup

	Area Scan	Zoom Scan
Grid Extents [mm]	165.0 x 195.0	24.0 x 24.0 x 22.0
Grid Steps [mm]	7.5 x 7.5	3.0 x 3.0 x 1.4
Sensor Surface [mm]	3.0	1.4

Measurement Results

	Area Scan	Zoom Scan
psSAR1g [W/Kg]	0.003	0.003
psSAR10g [W/Kg]	0	0.001
psAPD (1.0cm2, sq) [W/m2]		0.027
psAPD (4.0cm2, sq) [W/m2]		0.025
Power Drift [dB]	0.02	0
M2/M1 [%]		60.0
Dist 3dB Peak [mm]		1.4



Measurement Report for Device, BACK, U-NII-8, IEEE 802.11ax (160MHz, MCS0, 99pc duty cycle), Channel 207 (6985.0 MHz)

Exposure Conditions

Phantom Section	Position, Test Distance [mm]	Band	Group, UID	Frequency [MHz], Channel Number	Conversion Factor
5G	BACK, 2.00	U-NII-8	WLAN, 10755-AAC	6985.0, 207	1.0

Hardware Setup

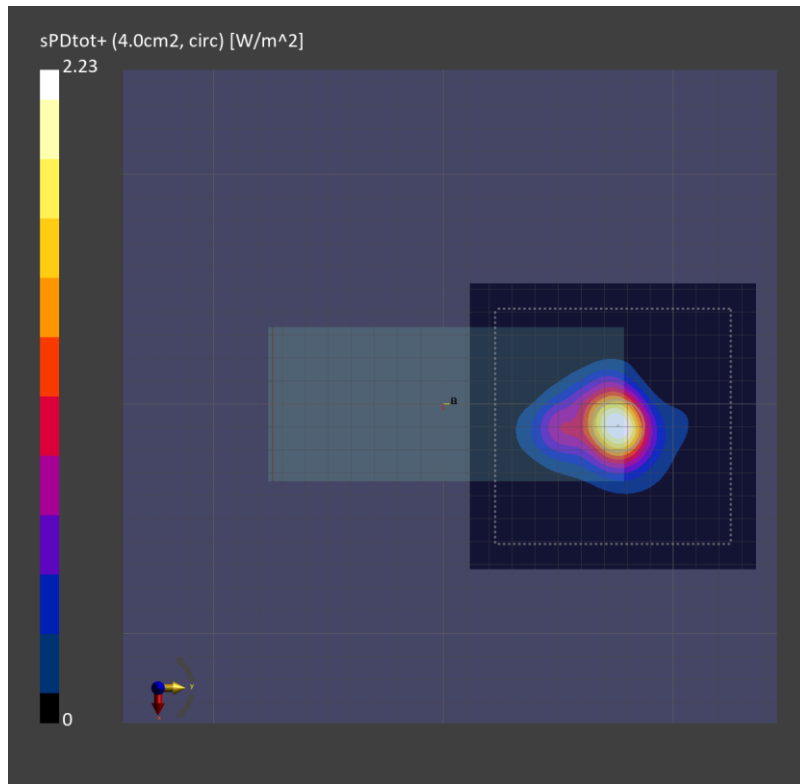
Phantom	Medium	Probe, Calibration Date	DAE, Calibration Date
mmWave - 1082	Air -	EUmmWV4 - SN9536_F1-55GHz, 2023-02-16	DAE4 Sn1670, 2022-06-07

Scans Setup

Scan Type	5G Scan
Grid Extents [mm]	120.0 x 120.0
Grid Steps [lambda]	0.047559807339951216 x 0.047559807339951216
Sensor Surface [mm]	2.0

Measurement Results

Scan Type	5G Scan
Avg. Area [cm <sup>2</sup> ]	4.00
psPDn+ [W/m <sup>2</sup> ]	1.75
psPDtot+ [W/m <sup>2</sup> ]	2.23
psPDmod+ [W/m <sup>2</sup> ]	2.62
E <sub>max</sub> [V/m]	52.0
Power Drift [dB]	-0.02



Measurement Report for Device, BACK, U-NII-5, IEEE 802.11ax (160MHz, MCS0, 99pc duty cycle), Channel 79 (6345.0 MHz)

Exposure Conditions

Phantom Section	Position, Test Distance [mm]	Band	Group, UID	Frequency [MHz], Channel Number	Conversion Factor
5G	BACK, 2.00	U-NII-5	WLAN, 10743-AAC	6345.0, 79	1.0

Hardware Setup

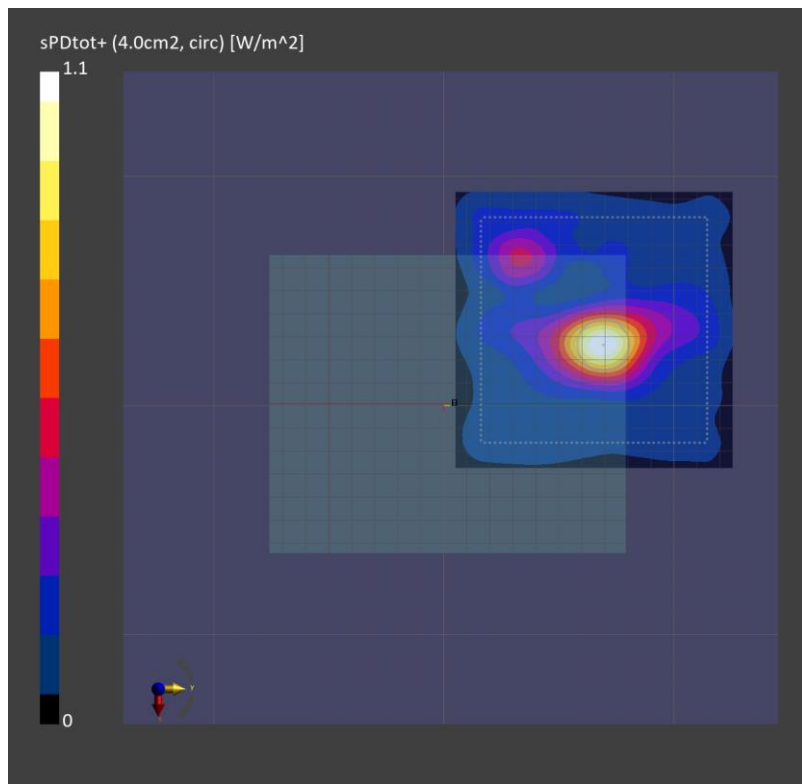
Phantom	Medium	Probe, Calibration Date	DAE, Calibration Date
mmWave - 1082	Air -	EUmmWV4 - SN9536_F1-55GHz, 2023-02-16	DAE4 Sn1668, 2022-04-27

Scans Setup

Scan Type	5G Scan
Grid Extents [mm]	120.0 x 120.0
Grid Steps [lambda]	0.043202144247958554 x 0.043202144247958554
Sensor Surface [mm]	2.0

Measurement Results

Scan Type	5G Scan
Avg. Area [cm <sup>2</sup> ]	4.00
psPDn+ [W/m <sup>2</sup> ]	1.02
psPDtot+ [W/m <sup>2</sup> ]	1.10
psPDmod+ [W/m <sup>2</sup> ]	1.25
E <sub>max</sub> [V/m]	30.9
Power Drift [dB]	-0.08



Measurement Report for Device, EDGE RIGHT, Custom Band, CW, Channel 6489600 (6489.6 MHz)

Exposure Conditions

Phantom Section	Position, Test Distance [mm]	Band	Group, UID	Frequency [MHz], Channel Number	Conversion Factor
5G	EDGE RIGHT, 2.00	Custom Band	CW, 0--	6489.6, 6489600	1.0

Hardware Setup

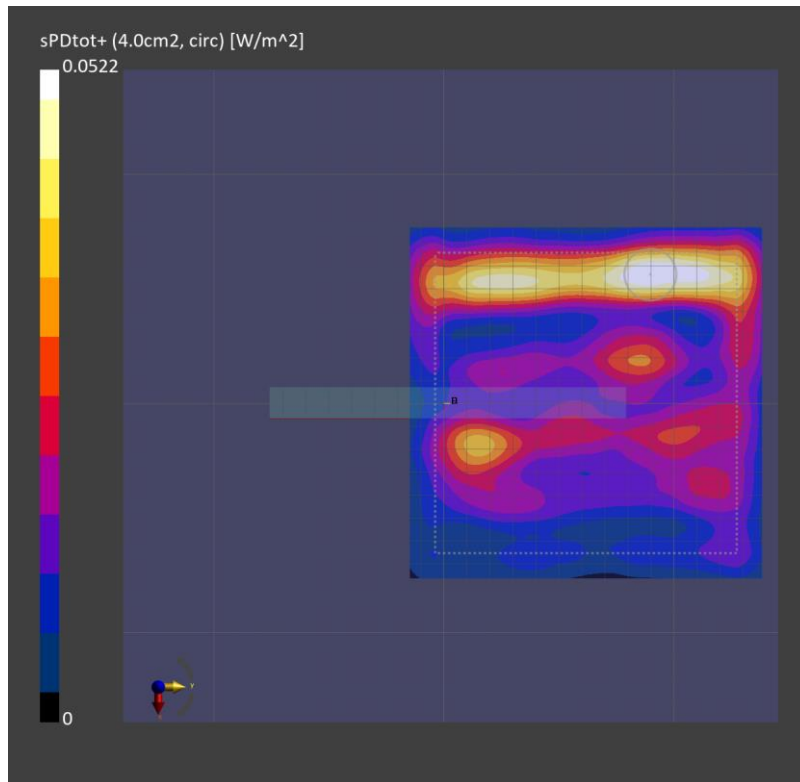
Phantom	Medium	Probe, Calibration Date	DAE, Calibration Date
mmWave - 1082	Air -	EUmmWV4 - SN9536_F1-55GHz, 2023-02-16	DAE4 Sn1670, 2022-06-07

Scans Setup

Scan Type	5G Scan
Grid Extents [mm]	120.0 x 120.0
Grid Steps [lambda]	0.04 x 0.04
Sensor Surface [mm]	2.0

Measurement Results

Scan Type	5G Scan
Avg. Area [cm <sup>2</sup> ]	4.00
psPDn+ [W/m <sup>2</sup> ]	0.049
psPDtot+ [W/m <sup>2</sup> ]	0.052
psPDmod+ [W/m <sup>2</sup> ]	0.076
E <sub>max</sub> [V/m]	6.63
Power Drift [dB]	n/a



Measurement Report for Device, EDGE TOP, Custom Band, CW, Channel 7987200 (7987.2 MHz)

Exposure Conditions

Phantom Section	Position, Test Distance [mm]	Band	Group, UID	Frequency [MHz], Channel Number	Conversion Factor
5G	EDGE TOP, 2.00	Custom Band	CW, 0--	7987.2, 7987200	1.0

Hardware Setup

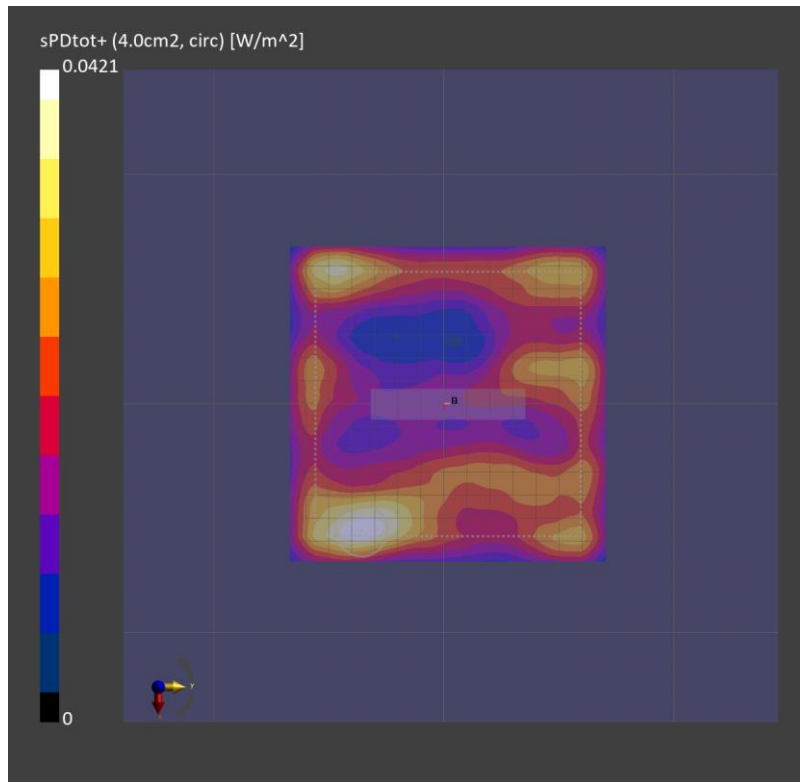
Phantom	Medium	Probe, Calibration Date	DAE, Calibration Date
mmWave - 1082	Air -	EUmmWV4 - SN9536_F1-55GHz, 2023-02-16	DAE4 Sn1670, 2022-06-07

Scans Setup

Scan Type	5G Scan
Grid Extents [mm]	120.0 x 120.0
Grid Steps [lambda]	0.04 x 0.04
Sensor Surface [mm]	2.0

Measurement Results

Scan Type	5G Scan
Avg. Area [cm <sup>2</sup> ]	4.00
psPDn+ [W/m <sup>2</sup> ]	0.041
psPDtot+ [W/m <sup>2</sup> ]	0.042
psPDmod+ [W/m <sup>2</sup> ]	0.049
E <sub>max</sub> [V/m]	5.76
Power Drift [dB]	n/a



Measurement Report for Device, BACK, Custom Band, CW, Channel 7987200 (7987.2 MHz)

Exposure Conditions

Phantom Section	Position, Test Distance [mm]	Band	Group, UID	Frequency [MHz], Channel Number	Conversion Factor
5G	BACK, 2.00	Custom Band	CW, 0--	7987.2, 7987200	1.0

Hardware Setup

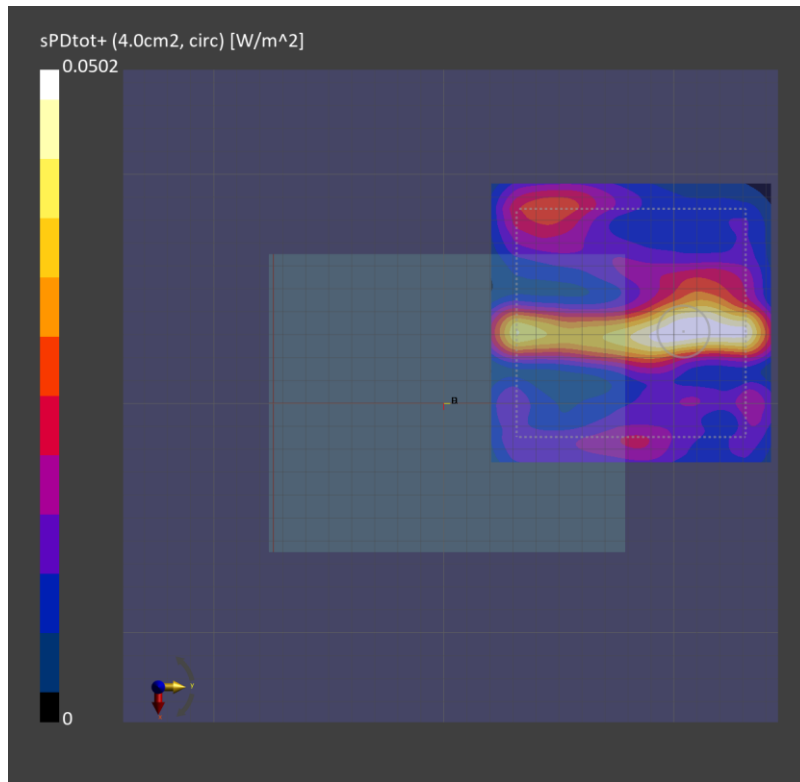
Phantom	Medium	Probe, Calibration Date	DAE, Calibration Date
mmWave - 1082	Air -	EUmmWV4 - SN9536_F1-55GHz, 2023-02-16	DAE4 Sn1670, 2022-06-07

Scans Setup

Scan Type	5G Scan
Grid Extents [mm]	120.0 x 120.0
Grid Steps [lambda]	0.04 x 0.04
Sensor Surface [mm]	2.0

Measurement Results

Scan Type	5G Scan
Avg. Area [cm <sup>2</sup> ]	4.00
psPDn+ [W/m <sup>2</sup> ]	0.048
psPDtot+ [W/m <sup>2</sup> ]	0.050
psPDmod+ [W/m <sup>2</sup> ]	0.060
E <sub>max</sub> [V/m]	7.46
Power Drift [dB]	n/a



Measurement Report for Device, EDGE TOP, Custom Band, CW, Channel 7987200 (7987.2 MHz)

Exposure Conditions

Phantom Section	Position, Test Distance [mm]	Band	Group, UID	Frequency [MHz], Channel Number	Conversion Factor
5G	EDGE TOP, 2.00	Custom Band	CW, 0--	7987.2, 7987200	1.0

Hardware Setup

Phantom	Medium	Probe, Calibration Date	DAE, Calibration Date
mmWave - 1082	Air -	EUmmWV4 - SN9536_F1-55GHz, 2023-02-16	DAE4 Sn1670, 2022-06-07

Scans Setup

Scan Type	5G Scan
Grid Extents [mm]	120.0 x 120.0
Grid Steps [lambda]	0.04 x 0.04
Sensor Surface [mm]	2.0

Measurement Results

Scan Type	5G Scan
Avg. Area [cm <sup>2</sup> ]	4.00
psPDn+ [W/m <sup>2</sup> ]	0.044
psPDtot+ [W/m <sup>2</sup> ]	0.046
psPDmod+ [W/m <sup>2</sup> ]	0.062
E <sub>max</sub> [V/m]	6.60
Power Drift [dB]	n/a

