

APPENDIX A: SAR TEST DATA

PCTEST

DUT: A3LSMF711B1; Type: Portable Handset; Serial: 2634M

Communication System: UID:10021-DAC, GSM; MAIA: Y; Frequency: 824.2 MHz
Medium: 835 Head; Medium parameters used:
f = 824.2 MHz; cond = 0.884 S/m; perm = 41.3; density = 1000 kg/m³
Phantom Section: Right Head

Test Date: 09/01/2021; Ambient Temp: 23.0°C; Tissue Temp: 22.7°C

Probe: EX3DV4 - SN7571; ConvF:(9.76,9.76,9.76); Calibrated: 2020-12-11
Sensor-Surface: 1.4mm (VMS + 6p)
Electronics: DAE4 Sn1533; Calibrated: 2020-12-07
Phantom: Twin-SAM V5.0; Serial: 1648
Measurement SW: cDASY6 Module SAR V16.0.0.116

Mode: GSM 850, Right Head, Cheek, Low.ch

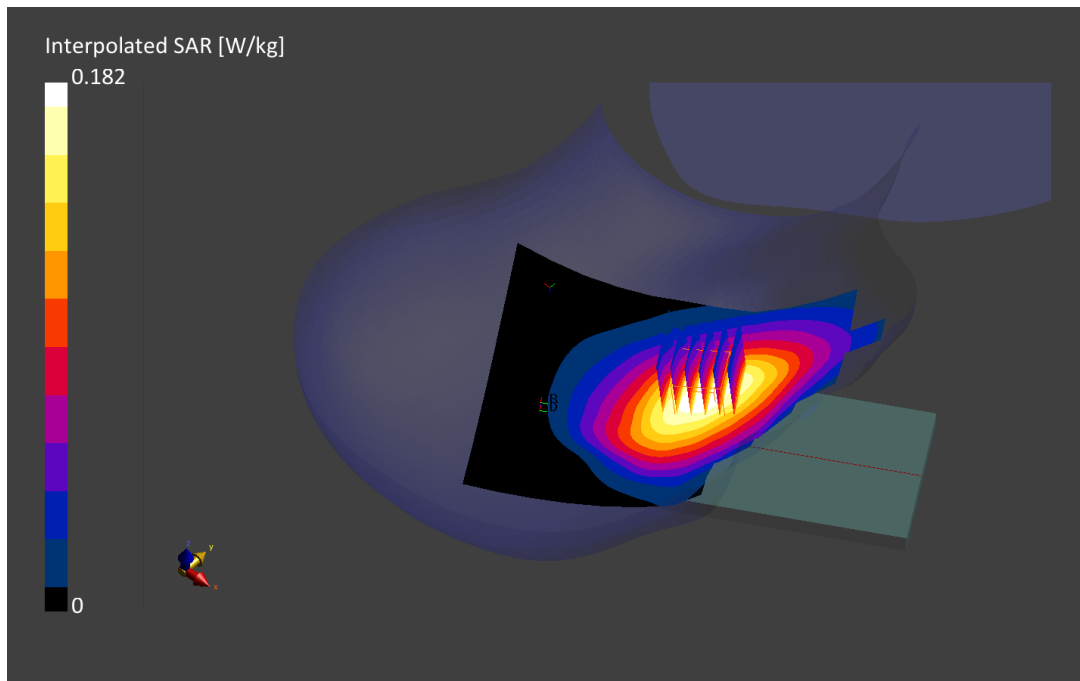
Area Scan (120.0 x 210.0): Measurement grid: dx=15.0mm, dy=15.0mm

Zoom Scan (30.0 x 30.0 x 30.0): Measurement grid: dx=6.0mm, dy=6.0mm, dz=1.5mm; Graded Ratio: 1.5

Reference Value = 0.14 W/kg; Power Drift = -0.03 dB

Peak SAR (extrapolated) = 0.182 W/kg

SAR(1 g) = 0.141 W/kg



PCTEST

DUT: A3LSMF711B1; Type: Portable Handset; Serial: 1629M

Communication System: UID:10021-DAC, GSM; MAIA: Y; Frequency: 1850.2 MHz

Medium: 1900 Head; Medium parameters used:

f = 1850.2 MHz; cond = 1.39 S/m; perm = 39.5; density = 1000 kg/m³

Phantom Section: Left Head

Test Date: 08/22/2021; Ambient Temp: 24.3°C; Tissue Temp: 22.1°C

Probe: EX3DV4 - SN7660; ConvF:(9.06,9.06,9.06); Calibrated: 2021-06-28

Sensor-Surface: 1.4mm (VMS + 6p)

Electronics: DAE4 Sn1677; Calibrated: 2021-06-22

Phantom: Twin-SAM V8.0; Serial: 2056

Measurement SW: cDASY6 Module SAR V16.0.0.116

Mode: GSM 1900, Left Head, Cheek, Low.Ch

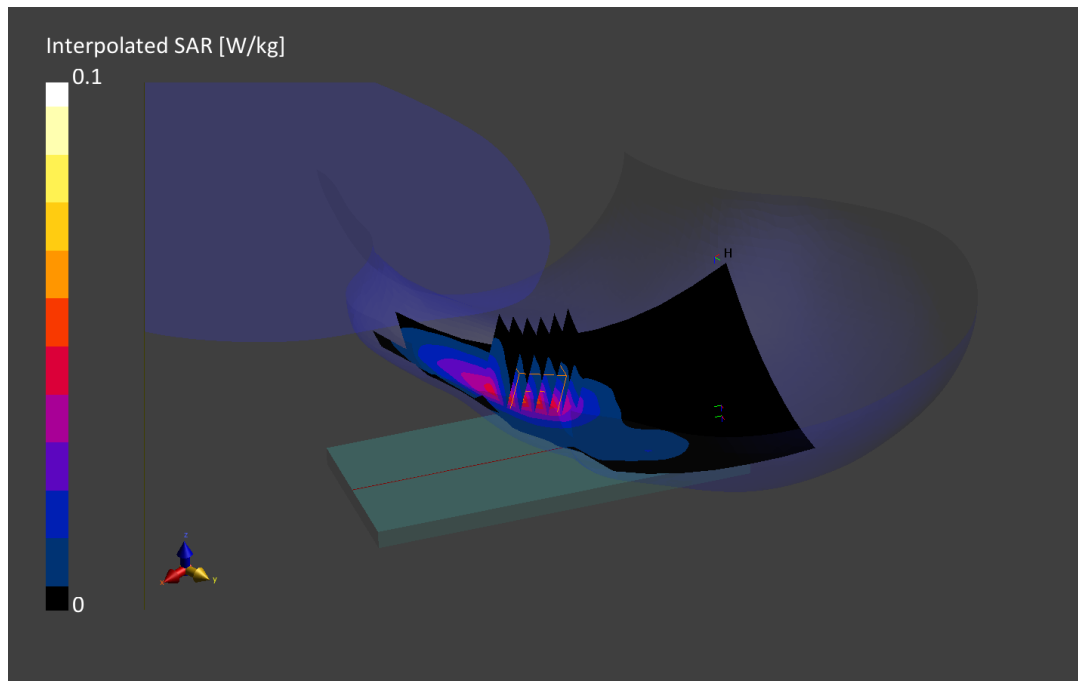
Area Scan (120.0 x 210.0): Measurement grid: dx=15.0mm, dy=15.0mm

Zoom Scan (30.0 x 30.0 x 30.0): Measurement grid: dx=6.0mm, dy=6.0mm, dz=1.5mm; Graded Ratio: 1.5

Reference Value = 0.05 W/kg; Power Drift = 0.11 dB

Peak SAR (extrapolated) = 0.071 W/kg

SAR(1 g) = 0.045 W/kg



PCTEST

DUT: A3LSMF711B1; Type: Portable Handset; Serial: 1272M

Communication System: UID:10011-CAB, WCDMA; MAIA: Y; Frequency: 836.6 MHz

Medium: 835 Head; Medium parameters used:

f = 836.6 MHz; cond = 0.898 S/m; perm = 41.1; density = 1000 kg/m³

Phantom Section: Right Head

Test Date: 09/01/2021; Ambient Temp: 23.0°C; Tissue Temp: 22.7°C

Probe: EX3DV4 - SN7571; ConvF:(9.76,9.76,9.76); Calibrated: 2020-12-11

Sensor-Surface: 1.4mm (VMS + 6p)

Electronics: DAE4 Sn1533; Calibrated: 2020-12-07

Phantom: Twin-SAM V5.0; Serial: 1648

Measurement SW: cDASY6 Module SAR V16.0.0.116

Mode: UMTS 850, Right Head, Cheek, Mid.ch

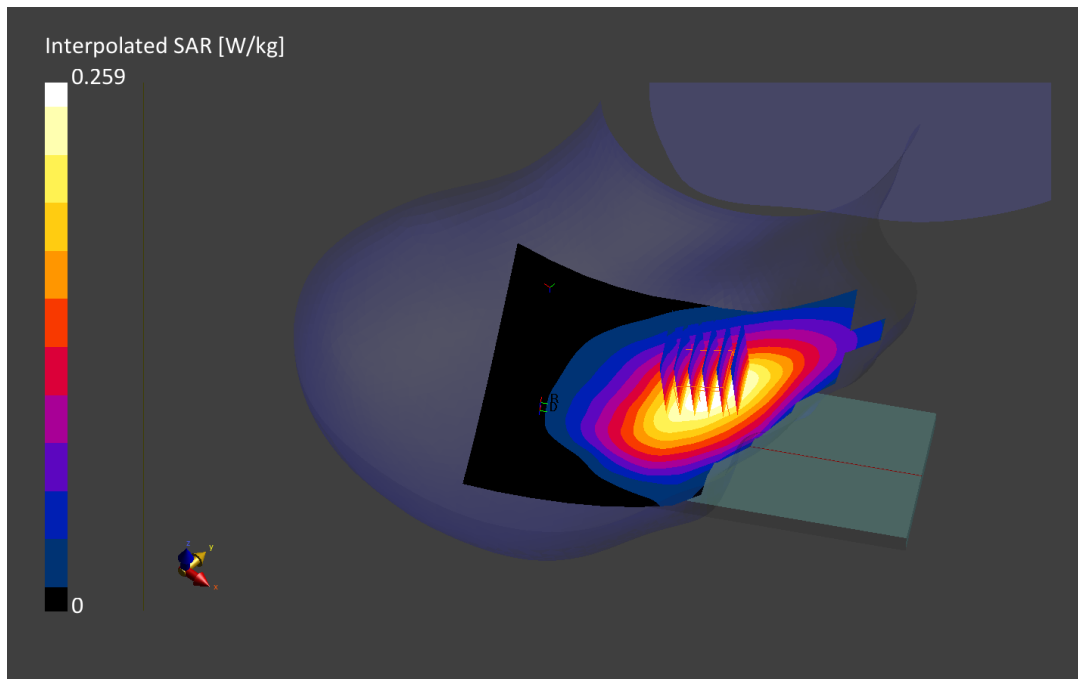
Area Scan (120.0 x 210.0): Measurement grid: dx=15.0mm, dy=15.0mm

Zoom Scan (30.0 x 30.0 x 30.0): Measurement grid: dx=6.0mm, dy=6.0mm, dz=1.5mm; Graded Ratio: 1.5

Reference Value = 0.21 W/kg; Power Drift = 0.00 dB

Peak SAR (extrapolated) = 0.259 W/kg

SAR(1 g) = 0.202 W/kg



PCTEST

DUT: A3LSMF711B1; Type: Portable Handset; Serial: 1272M

Communication System: UID:10011-CAB, WCDMA; MAIA: Y; Frequency: 1712.4 MHz

Medium: 1750 Head; Medium parameters used:

f = 1712.4 MHz; cond = 1.34 S/m; perm = 39.1; density = 1000 kg/m³

Phantom Section: Left Head

Test Date: 08/31/2021; Ambient Temp: 24.3°C; Tissue Temp: 20.9°C

Probe: EX3DV4 - SN7406; ConvF:(8.26,8.26,8.26); Calibrated: 2021-07-20

Sensor-Surface: 1.4mm (VMS + 6p)

Electronics: DAE4 Sn1676; Calibrated: 2021-06-21

Phantom: Twin-SAM V8.0; Serial: 2058

Measurement SW: cDASY6 Module SAR V16.0.0.116

Mode: UMTS 1750, Left Head, Cheek, Low.Ch

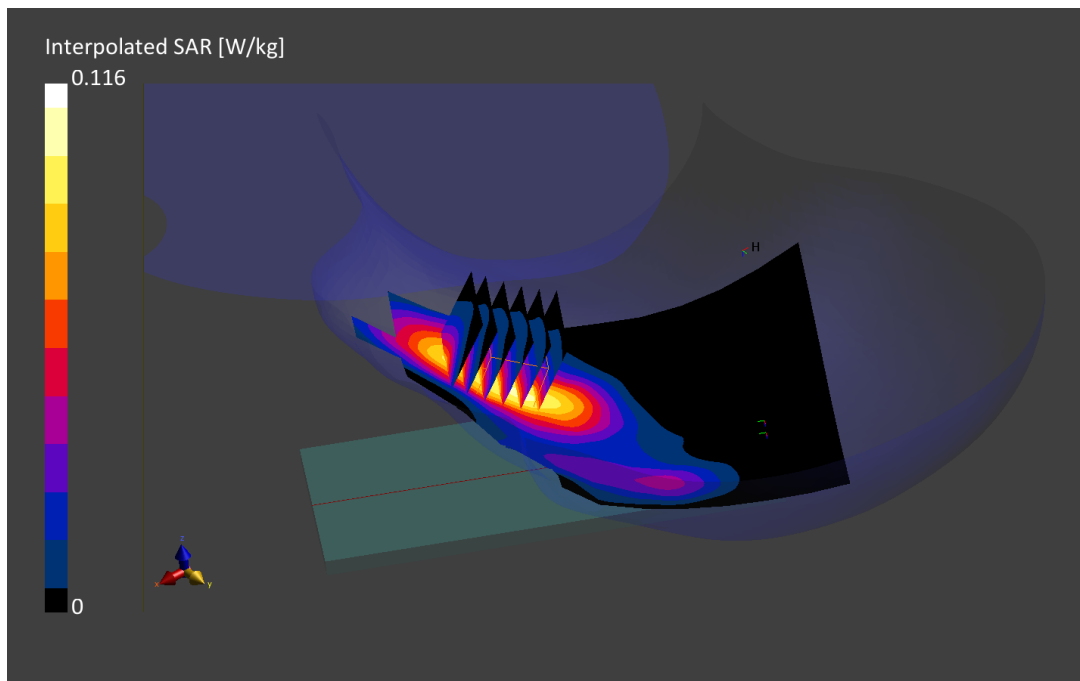
Area Scan (120.0 x 210.0): Measurement grid: dx=15.0mm, dy=15.0mm

Zoom Scan (30.0 x 30.0 x 30.0): Measurement grid: dx=6.0mm, dy=6.0mm, dz=1.5mm; Graded Ratio: 1.5

Reference Value = 0.08 W/kg; Power Drift = -0.09 dB

Peak SAR (extrapolated) = 0.115 W/kg

SAR(1 g) = 0.074 W/kg



PCTEST

DUT: A3LSMF711B1; Type: Portable Handset; Serial: 1629M

Communication System: UID:10011-CAB, WCDMA; MAIA: Y; Frequency: 1852.4 MHz

Medium: 1900 Head; Medium parameters used:

f = 1852.4 MHz; cond = 1.40 S/m; perm = 39.5; density = 1000 kg/m³

Phantom Section: Left Head

Test Date: 08/22/2021; Ambient Temp: 24.3°C; Tissue Temp: 22.1°C

Probe: EX3DV4 - SN7660; ConvF:(9.06,9.06,9.06); Calibrated: 2021-06-28

Sensor-Surface: 1.4mm (VMS + 6p)

Electronics: DAE4 Sn1677; Calibrated: 2021-06-22

Phantom: Twin-SAM V8.0; Serial: 2056

Measurement SW: cDASY6 Module SAR V16.0.0.116

Mode: UMTS 1900, Left Head, Cheek, Low.Ch

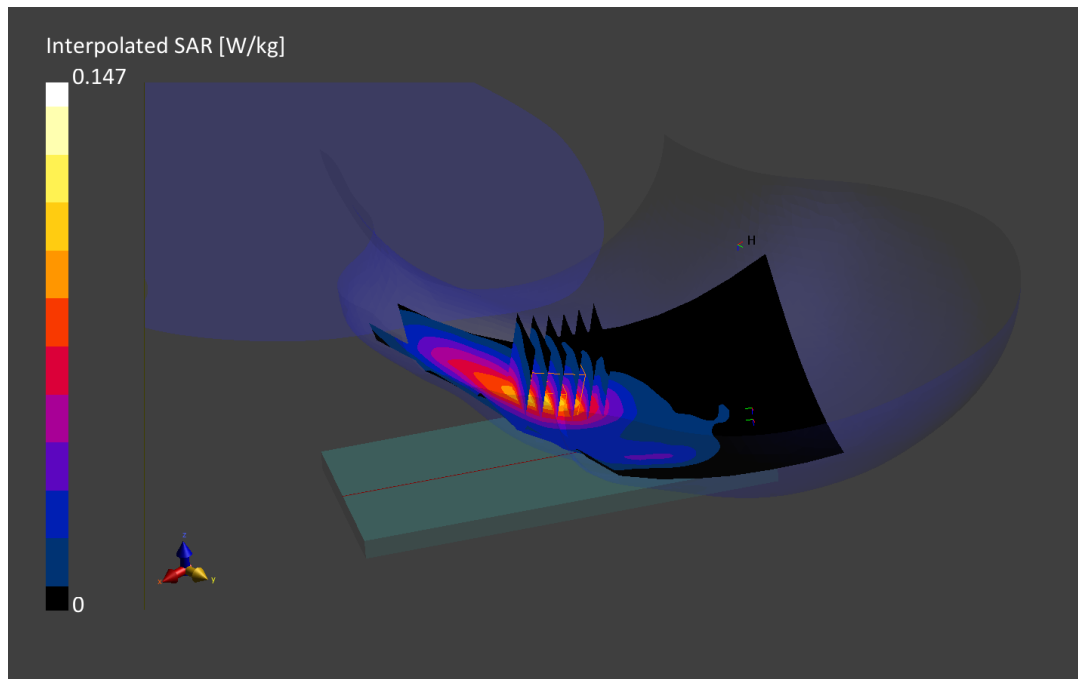
Area Scan (120.0 x 210.0): Measurement grid: dx=15.0mm, dy=15.0mm

Zoom Scan (30.0 x 30.0 x 30.0): Measurement grid: dx=6.0mm, dy=6.0mm, dz=1.5mm; Graded Ratio: 1.5

Reference Value = 0.10 W/kg; Power Drift = 0.01 dB

Peak SAR (extrapolated) = 0.147 W/kg

SAR(1 g) = 0.088 W/kg



PCTEST

DUT: A3LSMF711B1; Type: Portable Handset; Serial: 1271M

Communication System: UID:10175-CAG, LTE-FDD; MAIA: Y; Frequency: 707.5 MHz
Medium: 750 Head; Medium parameters used:
f = 707.5 MHz; cond = 0.879 S/m; perm = 40.3; density = 1000 kg/m³
Phantom Section: Left Head

Test Date: 09/07/2021; Ambient Temp: 22.6°C; Tissue Temp: 21.6°C

Probe: EX3DV4 - SN7406; ConvF:(10.08,10.08,10.08); Calibrated: 2021-07-20
Sensor-Surface: 1.4mm (VMS + 6p)
Electronics: DAE4 Sn1676; Calibrated: 2021-06-21
Phantom: Twin-SAM V8.0; Serial: 2058
Measurement SW: cDASY6 Module SAR V16.0.0.116

**Mode: LTE Band 12, Left Head, Cheek, Mid.ch,
10 MHz Bandwidth, QPSK, 1 RB, 0 RB Offset**

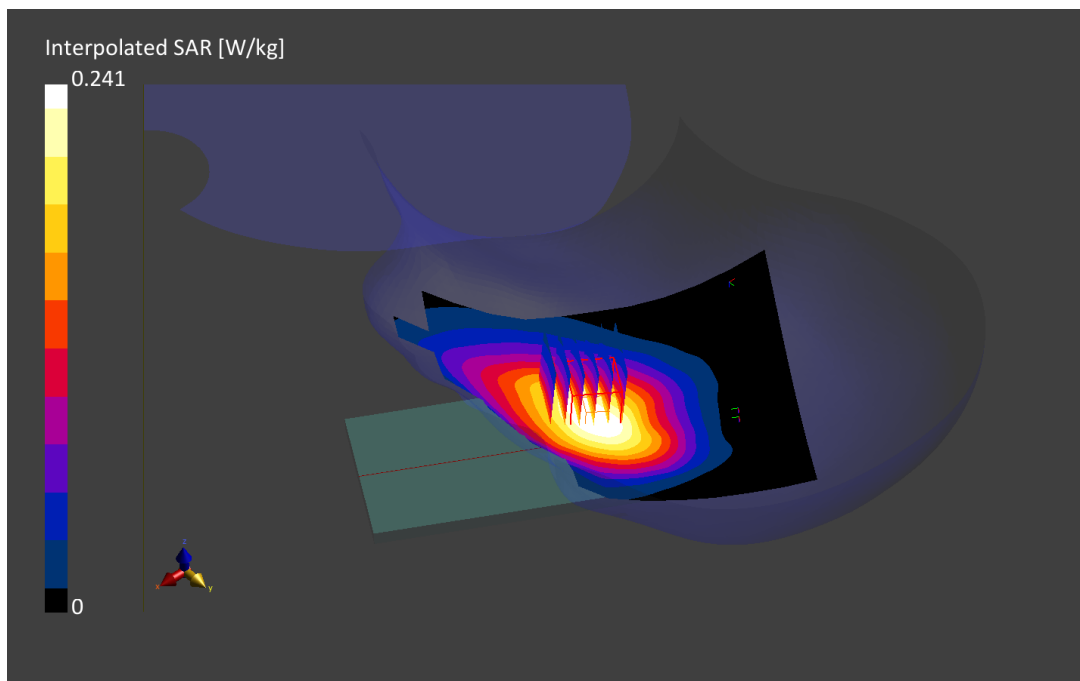
Area Scan (120.0 x 210.0): Measurement grid: dx=15.0mm, dy=15.0mm

Zoom Scan (30.0 x 30.0 x 30.0): Measurement grid: dx=6.0mm, dy=6.0mm, dz=1.5mm; Graded Ratio: 1.5

Reference Value = 0.19 W/kg; Power Drift = -0.01 dB

Peak SAR (extrapolated) = 0.241 W/kg

SAR(1 g) = 0.183 W/kg



PCTEST

DUT: A3LSMF711B1; Type: Portable Handset; Serial: 1262M

Communication System: UID:10175-CAG, LTE-FDD; MAIA: Y; Frequency: 782.0 MHz
Medium: 750 Head; Medium parameters used:
f = 782.0 MHz; cond = 0.905 S/m; perm = 40.1; density = 1000 kg/m³
Phantom Section: Right Head

Test Date: 09/07/2021; Ambient Temp: 22.6°C; Tissue Temp: 21.6°C

Probe: EX3DV4 - SN7406; ConvF:(10.08,10.08,10.08); Calibrated: 2021-07-20
Sensor-Surface: 1.4mm (VMS + 6p)
Electronics: DAE4 Sn1676; Calibrated: 2021-06-21
Phantom: Twin-SAM V8.0; Serial: 2058
Measurement SW: cDASY6 Module SAR V16.0.0.116

**Mode: LTE Band 13, Right Head, Cheek, Mid.ch,
10 MHz Bandwidth, QPSK, 1 RB, 25 RB Offset**

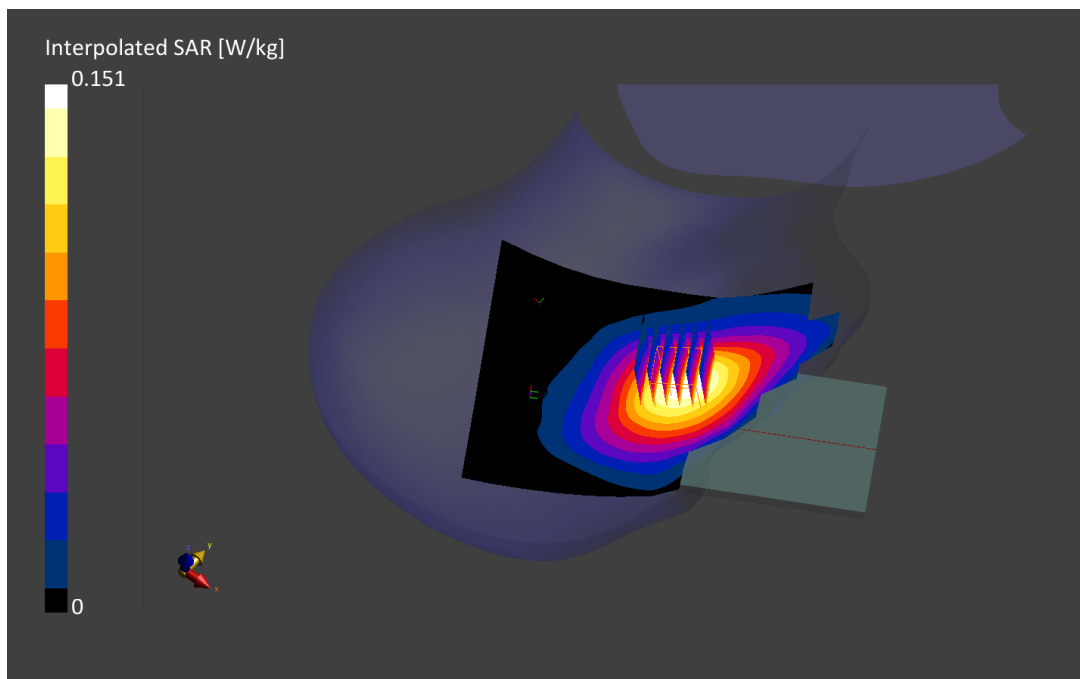
Area Scan (120.0 x 210.0): Measurement grid: dx=15.0mm, dy=15.0mm

Zoom Scan (30.0 x 30.0 x 30.0): Measurement grid: dx=6.0mm, dy=6.0mm, dz=1.5mm; Graded Ratio: 1.5

Reference Value = 0.12 W/kg; Power Drift = 0.03 dB

Peak SAR (extrapolated) = 0.151 W/kg

SAR(1 g) = 0.111 W/kg



PCTEST

DUT: A3LSMF711B1; Type: Portable Handset; Serial: 1629M

Communication System: UID:10181-CAE, LTE-FDD; MAIA: Y; Frequency: 831.5 MHz

Medium: 835 Head; Medium parameters used:

$f = 831.5$ MHz; $\text{cond} = 0.892$ S/m; $\text{perm} = 41.2$; $\text{density} = 1000$ kg/m³

Phantom Section: Right Head

Test Date: 09/01/2021; Ambient Temp: 23.0°C; Tissue Temp: 22.7°C

Probe: EX3DV4 - SN7571; ConvF:(9.76,9.76,9.76); Calibrated: 2020-12-11

Sensor-Surface: 1.4mm (VMS + 6p)

Electronics: DAE4 Sn1533; Calibrated: 2020-12-07

Phantom: Twin-SAM V5.0; Serial: 1648

Measurement SW: cDASY6 Module SAR V16.0.0.116

**Mode: LTE Band 26 (Cell), Right Head, Cheek, Mid.ch,
15 MHz Bandwidth, QPSK, 1 RB, 36 RB Offset**

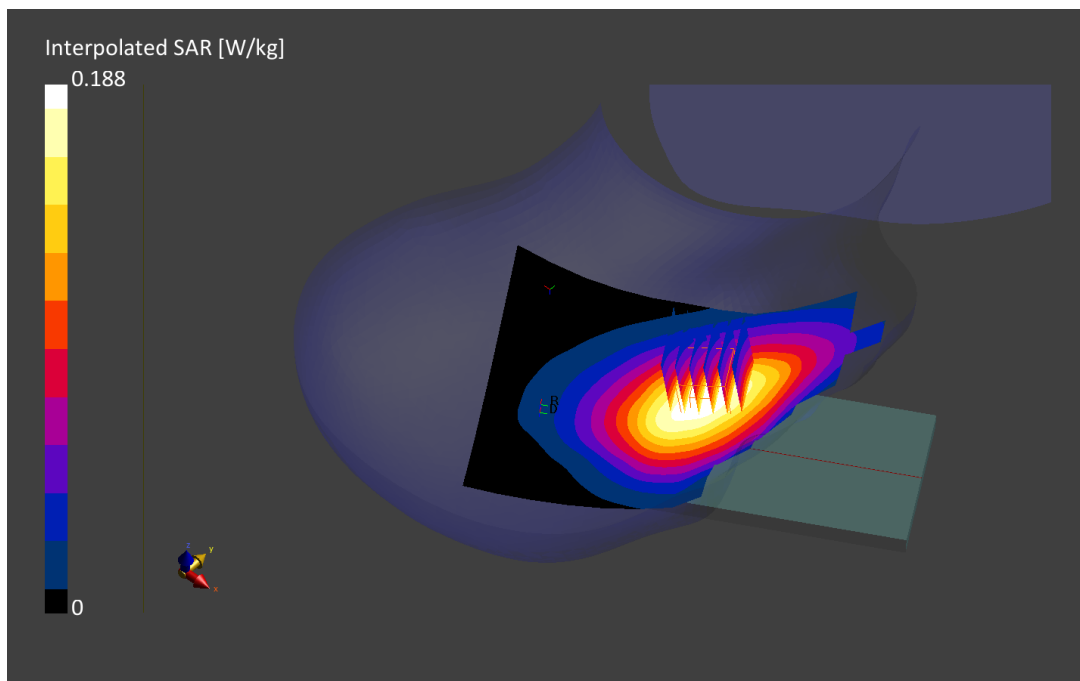
Area Scan (120.0 x 210.0): Measurement grid: $dx=15.0$ mm, $dy=15.0$ mm

Zoom Scan (30.0 x 30.0 x 30.0): Measurement grid: $dx=6.0$ mm, $dy=6.0$ mm, $dz=1.5$ mm; Graded Ratio: 1.5

Reference Value = 0.15 W/kg; Power Drift = -0.03 dB

Peak SAR (extrapolated) = 0.188 W/kg

SAR(1 g) = 0.147 W/kg



PCTEST

DUT: A3LSMF711B1; Type: Portable Handset; Serial: 1271M

Communication System: UID:10169-CAE, LTE-FDD; MAIA: Y; Frequency: 1770.0 MHz

Medium: 1750 Head; Medium parameters used:

$f = 1770.0$ MHz; $\text{cond} = 1.38$ S/m; $\text{perm} = 39.0$; $\text{density} = 1000$ kg/m³

Phantom Section: Right Head

Test Date: 08/31/2021; Ambient Temp: 24.3°C; Tissue Temp: 20.9°C

Probe: EX3DV4 - SN7406; ConvF:(8.26,8.26,8.26); Calibrated: 2021-07-20

Sensor-Surface: 1.4mm (VMS + 6p)

Electronics: DAE4 Sn1676; Calibrated: 2021-06-21

Phantom: Twin-SAM V8.0; Serial: 2058

Measurement SW: cDASY6 Module SAR V16.0.0.116

**Mode: LTE Band 66 (AWS), Right Head, Cheek, High.ch,
20 MHz Bandwidth, QPSK, 1 RB, 99 RB Offset**

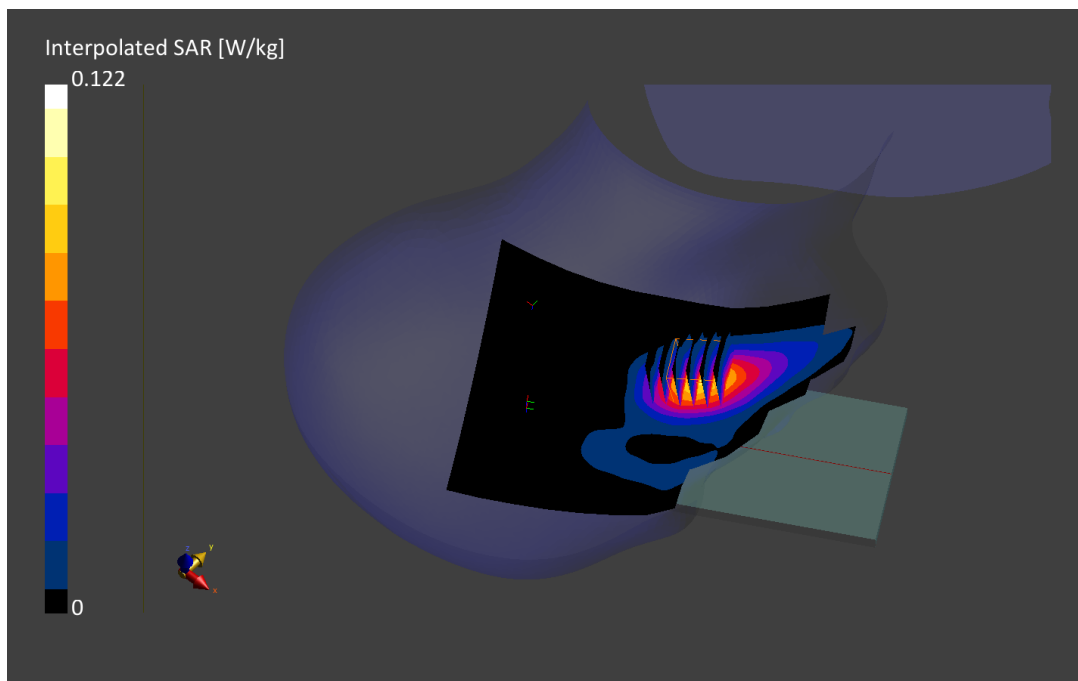
Area Scan (120.0 x 210.0): Measurement grid: $dx=15.0$ mm, $dy=15.0$ mm

Zoom Scan (30.0 x 30.0 x 30.0): Measurement grid: $dx=6.0$ mm, $dy=6.0$ mm, $dz=1.5$ mm; Graded Ratio: 1.5

Reference Value = 0.09 W/kg; Power Drift = -0.08 dB

Peak SAR (extrapolated) = 0.122 W/kg

SAR(1 g) = 0.077 W/kg



PCTEST

DUT: A3LSMF711B1; Type: Portable Handset; Serial: 1629M

Communication System: UID:10169-CAE, LTE-FDD; MAIA: Y; Frequency: 1860.0 MHz

Medium: 1900 Head; Medium parameters used:

f = 1860.0 MHz; cond = 1.40 S/m; perm = 39.1; density = 1000 kg/m³

Phantom Section: Left Head

Test Date: 09/19/2021; Ambient Temp: 22.9°C; Tissue Temp: 22.7°C

Probe: EX3DV4 - SN7406; ConvF:(7.98,7.98,7.98); Calibrated: 2021-07-20

Sensor-Surface: 1.4mm (VMS + 6p)

Electronics: DAE4 Sn1676; Calibrated: 2021-06-21

Phantom: Twin-SAM V8.0; Serial: 2058

Measurement SW: cDASY6 Module SAR V16.0.0.116

**Mode: LTE Band 25 (PCS), Left Head, Cheek, Low.Ch,
20 MHz Bandwidth, QPSK, 1 RB, 0 RB Offset**

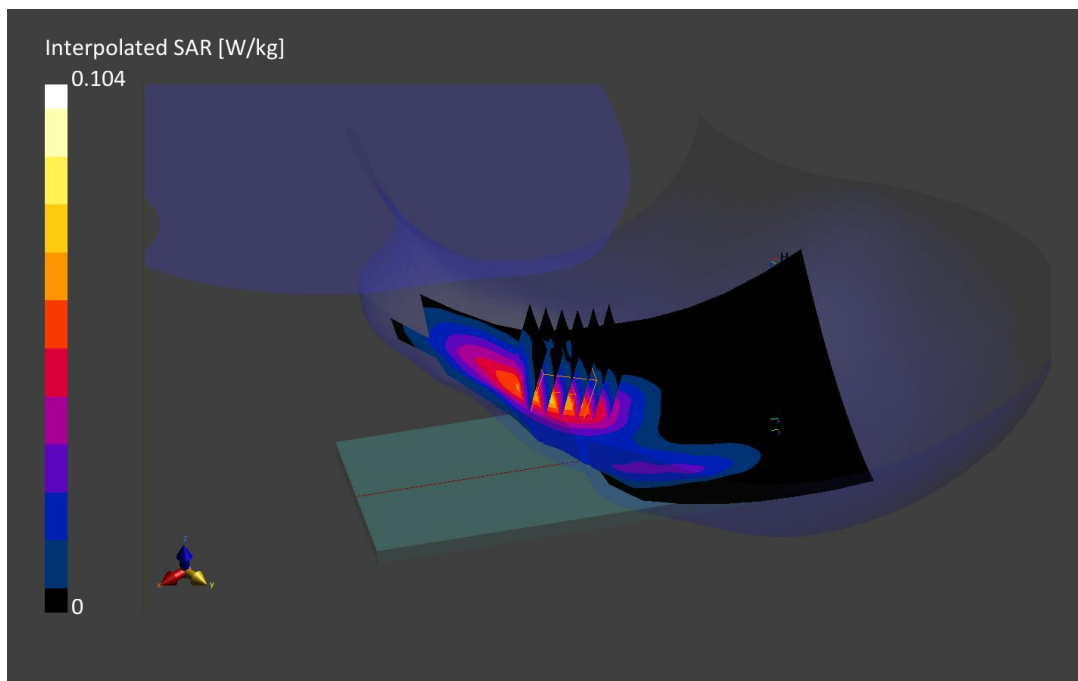
Area Scan (120.0 x 210.0): Measurement grid: dx=15.0mm, dy=15.0mm

Zoom Scan (30.0 x 30.0 x 30.0): Measurement grid: dx=6.0mm, dy=6.0mm, dz=1.5mm; Graded Ratio: 1.5

Reference Value = 0.06 W/kg; Power Drift = -0.18 dB

Peak SAR (extrapolated) = 0.104 W/kg

SAR(1 g) = 0.062 W/kg



PCTEST

DUT: A3LSMF711B1; Type: Portable Handset; Serial: 1255M

Communication System: UID:10172-CAG, LTE-TDD; MAIA: Y; Frequency: 2680.0 MHz
Medium: 2450 Head; Medium parameters used:
f = 2680.0 MHz; cond = 2.02 S/m; perm = 37.6; density = 1000 kg/m³
Phantom Section: Left Head

Test Date: 08/26/2021; Ambient Temp: 24.0°C; Tissue Temp: 21.9°C

Probe: EX3DV4 - SN7660; ConvF:(8.26,8.26,8.26); Calibrated: 2021-06-28
Sensor-Surface: 1.4mm (VMS + 6p)
Electronics: DAE4 Sn1677; Calibrated: 2021-06-22
Phantom: Twin-SAM V8.0; Serial: 2056
Measurement SW: cDASY6 Module SAR V16.0.0.116

**Mode: LTE Band 41 PC2, Left Head, Cheek, High.ch,
20 MHz Bandwidth, QPSK, 1 RB, 50 RB Offset**

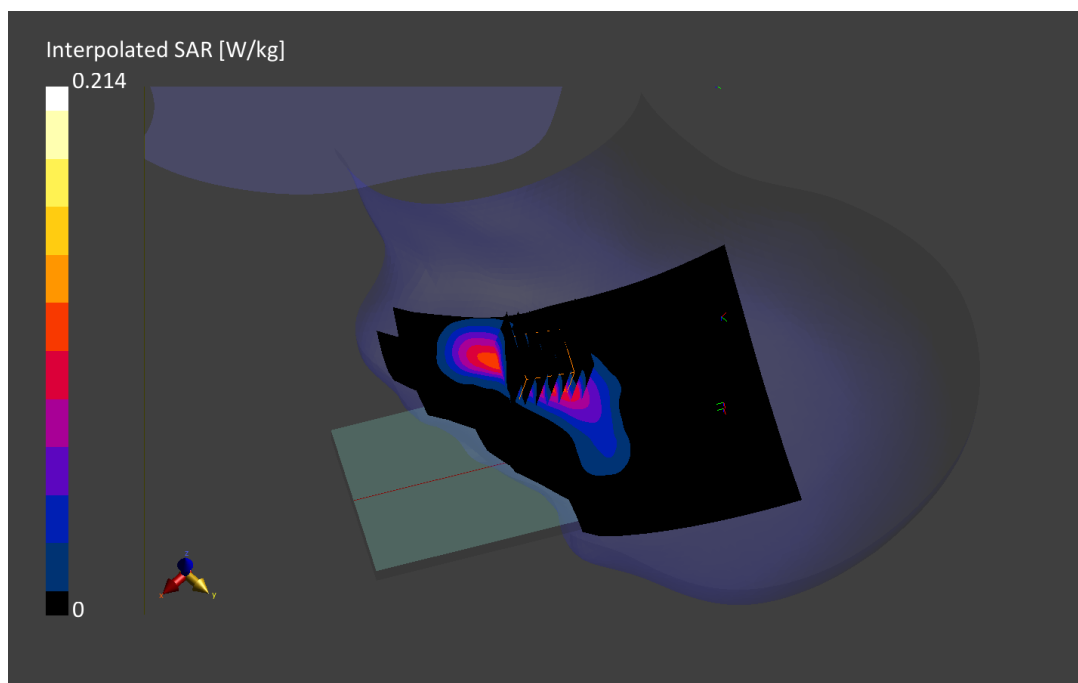
Area Scan (120.0 x 200.0): Measurement grid: dx=10.0mm, dy=10.0mm

Zoom Scan (30.0 x 30.0 x 30.0): Measurement grid: dx=5.0mm, dy=5.0mm, dz=1.5mm; Graded Ratio: 1.5

Reference Value = 0.12 W/kg; Power Drift = 0.00 dB

Peak SAR (extrapolated) = 0.214 W/kg

SAR(1 g) = 0.107 W/kg



PCTEST

DUT: A3LSMF711B1; Type: Portable Handset; Serial: 1629M

Communication System: UID:10931-AAB, 5G NR FR1 FDD; MAIA: Y; Frequency: 836.5 MHz

Medium: 835 Head; Medium parameters used:

f = 836.5 MHz; cond = 0.940 S/m; perm = 40.0; density = 1000 kg/m³

Phantom Section: Right Head

Test Date: 09/04/2021; Ambient Temp: 22.5°C; Tissue Temp: 21.0°C

Probe: EX3DV4 - SN7571; ConvF:(9.76,9.76,9.76); Calibrated: 2020-12-11

Sensor-Surface: 1.4mm (VMS + 6p)

Electronics: DAE4 Sn1533; Calibrated: 2020-12-07

Phantom: Twin-SAM V5.0; Serial: 1648

Measurement SW: cDASY6 Module SAR V16.0.0.116

**Mode: NR Band n5, Right Head, Cheek, 20 MHz Bandwidth,
Ch. 167300, DFT-s-OFDM QPSK, 1 RB, 53 RB Offset**

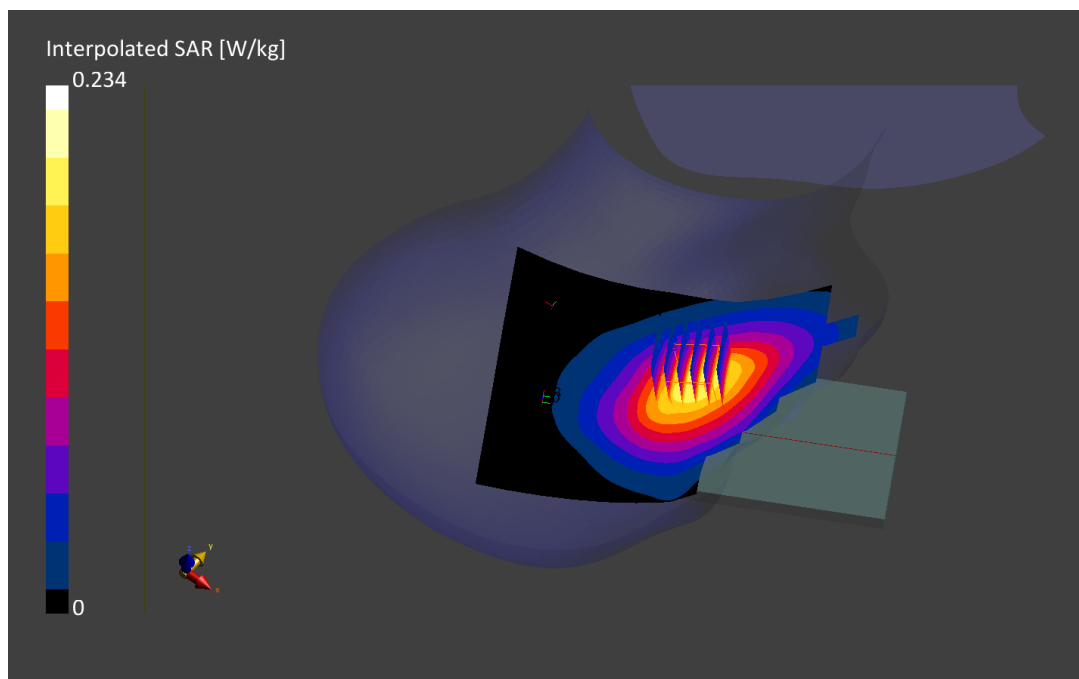
Area Scan (120.0 x 210.0): Measurement grid: dx=15.0mm, dy=15.0mm

Zoom Scan (30.0 x 30.0 x 30.0): Measurement grid: dx=6.0mm, dy=6.0mm, dz=1.5mm; Graded Ratio: 1.5

Reference Value = 0.18 W/kg; Power Drift = -0.03 dB

Peak SAR (extrapolated) = 0.234 W/kg

SAR(1 g) = 0.175 W/kg



PCTEST

DUT: A3LSMF711B1; Type: Portable Handset; Serial: 1271M

Communication System: UID:10939-AAB, 5G NR FR1 FDD; MAIA: Y; Frequency: 1720.0 MHz

Medium: 1750 Head; Medium parameters used:

$f = 1720.0$ MHz; $\text{cond} = 1.34$ S/m; $\text{perm} = 39.1$; $\text{density} = 1000$ kg/m³

Phantom Section: Right Head

Test Date: 08/31/2021; Ambient Temp: 24.3°C; Tissue Temp: 20.9°C

Probe: EX3DV4 - SN7406; ConvF:(8.26,8.26,8.26); Calibrated: 2021-07-20

Sensor-Surface: 1.4mm (VMS + 6p)

Electronics: DAE4 Sn1676; Calibrated: 2021-06-21

Phantom: Twin-SAM V8.0; Serial: 2058

Measurement SW: cDASY6 Module SAR V16.0.0.116

**Mode: NR Band n66, Right Head, Cheek, 20 MHz Bandwidth,
Ch. 344000, DFT-s-OFDM QPSK, 50 RB, 28 RB Offset**

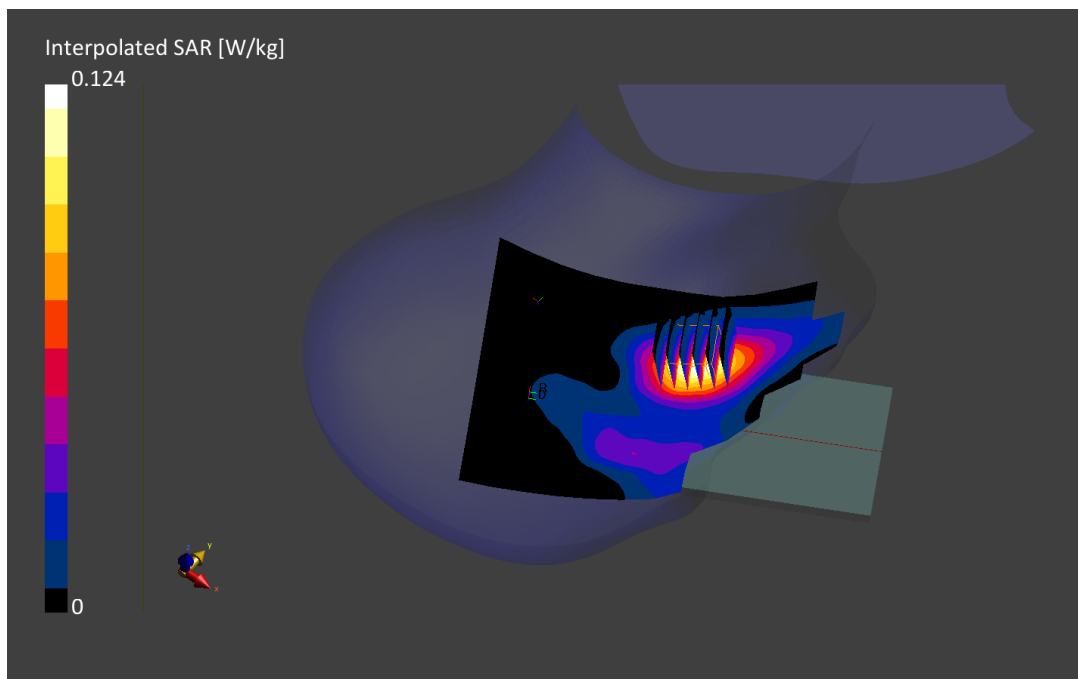
Area Scan (120.0 x 210.0): Measurement grid: $dx=15.0$ mm, $dy=15.0$ mm

Zoom Scan (30.0 x 30.0 x 30.0): Measurement grid: $dx=6.0$ mm, $dy=6.0$ mm, $dz=1.5$ mm; Graded Ratio: 1.5

Reference Value = 0.10 W/kg; Power Drift = -0.04 dB

Peak SAR (extrapolated) = 0.125 W/kg

SAR(1 g) = 0.081 W/kg



PCTEST

DUT: A3LSMF711B1; Type: Portable Handset; Serial: 1271M

Communication System: UID:10196-CAD, WLAN; MAIA: Y; Frequency: 2462.0 MHz

Medium: 2450 Head; Medium parameters used:

f = 2462.0 MHz; cond = 1.84 S/m; perm = 38.0; density = 1000 kg/m³

Phantom Section: Right Head

Test Date: 08/26/2021; Ambient Temp: 24.0°C; Tissue Temp: 21.9°C

Probe: EX3DV4 - SN7660; ConvF:(8.49,8.49,8.49); Calibrated: 2021-06-28

Sensor-Surface: 1.4mm (VMS + 6p)

Electronics: DAE4 Sn1677; Calibrated: 2021-06-22

Phantom: Twin-SAM V8.0; Serial: 2056

Measurement SW: cDASY6 Module SAR V16.0.0.116

Mode: IEEE 802.11n, MIMO, 20 MHz Bandwidth, Right Head, Tilt, Ch.11, 13 Mbps

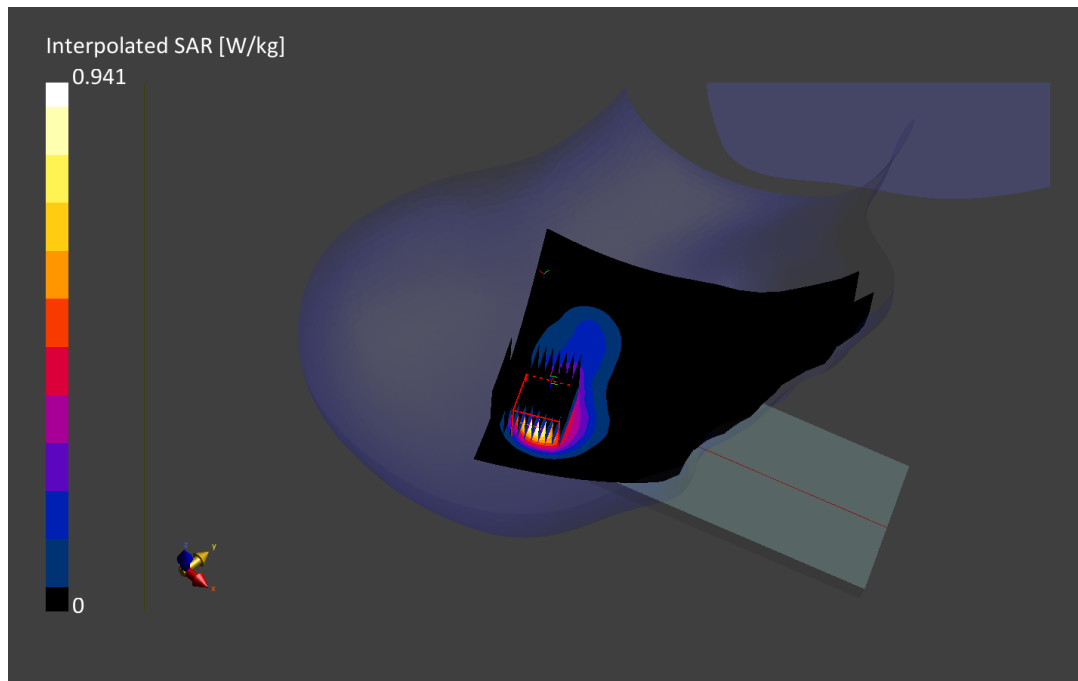
Area Scan (120.0 x 200.0): Measurement grid: dx=10.0mm, dy=10.0mm

Zoom Scan (30.0 x 30.0 x 30.0): Measurement grid: dx=3.2mm, dy=3.2mm, dz=1.2mm; Graded Ratio: 1.2

Reference Value = 0.30 W/kg; Power Drift = 0.00 dB

Peak SAR (extrapolated) = 0.941 W/kg

SAR(1 g) = 0.298 W/kg



PCTEST

DUT: A3LSMF711B1; Type: Portable Handset; Serial: 1255M

Communication System: UID:10544-AAC, WLAN; MAIA: Y; Frequency: 5610.0 MHz
Medium: 5200-5800 Head; Medium parameters used:
f = 5610.0 MHz; cond = 4.96 S/m; perm = 34.1; density = 1000 kg/m³
Phantom Section: Right Head

Test Date: 08/24/2021; Ambient Temp: 22.4°C; Tissue Temp: 21.4°C

Probe: EX3DV4 - SN7538; ConvF:(4.63,4.63,4.63); Calibrated: 2020-11-23
Sensor-Surface: 1.4mm (VMS + 6p)
Electronics: DAE4 Sn1449; Calibrated: 2020-09-10
Phantom: Twin-SAM V5.0 (Leftt); Serial: 1873
Measurement SW: cDASY6 Module SAR V16.0.0.116

**Mode: IEEE 802.11ac, U-NII-2C, MIMO, 80 MHz Bandwidth,
Right Head, Cheek, Ch. 122, 58.5 Mbps**

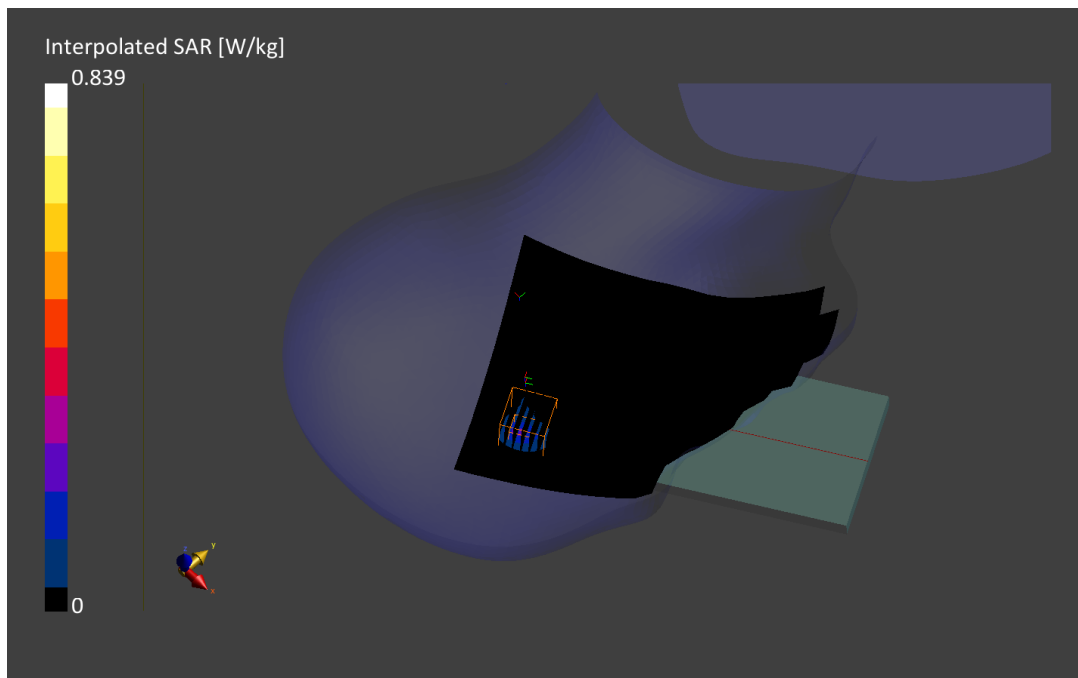
Area Scan (120.0 x 200.0): Measurement grid: dx=10.0mm, dy=10.0mm

Zoom Scan (22.0 x 22.0 x 22.0): Measurement grid: dx=4.0mm, dy=4.0mm, dz=1.4mm; Graded Ratio: 1.4

Reference Value = 0.30 W/kg; Power Drift = -0.12 dB

Peak SAR (extrapolated) = 0.838 W/kg

SAR(1 g) = 0.186 W/kg



PCTEST

DUT: A3LSMF711B1; Type: Portable Handset; Serial: 2634M

Communication System: UID:10032-CAA, Bluetooth; MAIA: Y; Frequency: 2480.0 MHz

Medium: 2450 Head; Medium parameters used:

f = 2480.0 MHz; cond = 1.89 S/m; perm = 38.6; density = 1000 kg/m³

Phantom Section: Right Head

Test Date: 08/16/2021; Ambient Temp: 24.0°C; Tissue Temp: 22.5°C

Probe: EX3DV4 - SN7660; ConvF:(8.49,8.49,8.49); Calibrated: 2021-06-28

Sensor-Surface: 1.4mm (VMS + 6p)

Electronics: DAE4 Sn1677; Calibrated: 2021-06-22

Phantom: Twin-SAM V8.0; Serial: 2056

Measurement SW: cDASY6 Module SAR V16.0.0.116

Mode: Bluetooth, Antenna 2, Right Head, Cheek, Ch. 78, 1 Mbps

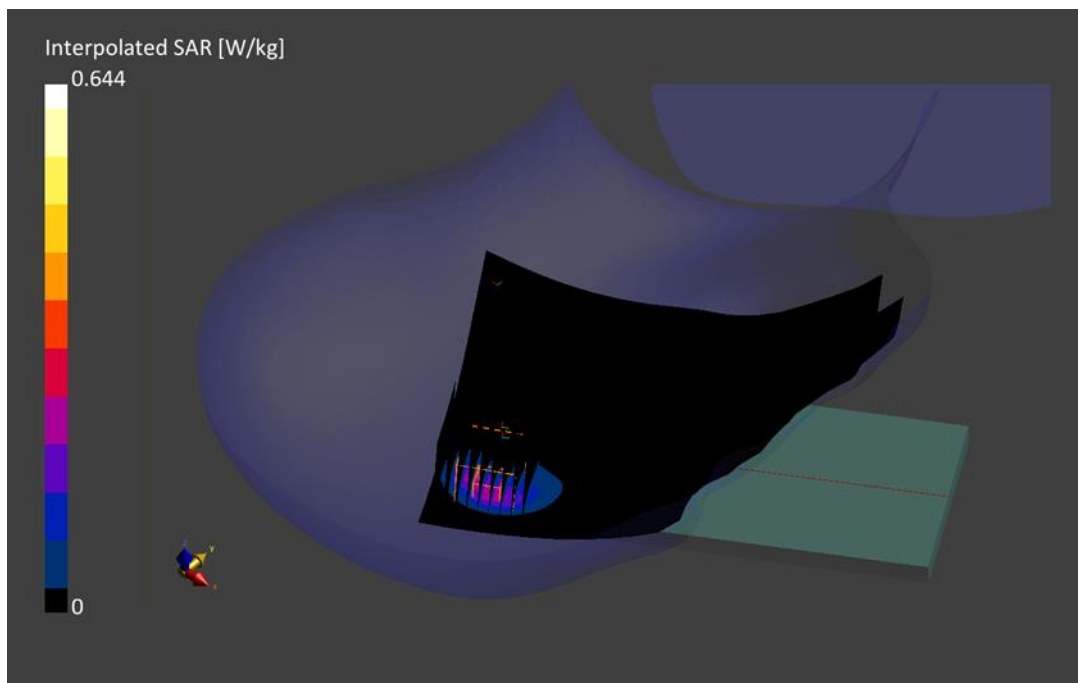
Area Scan (120.0 x 200.0): Measurement grid: dx=10.0mm, dy=10.0mm

Zoom Scan (30.0 x 30.0 x 30.0): Measurement grid: dx=4.1mm, dy=4.1mm, dz=1.4mm; Graded Ratio: 1.4

Reference Value = 0.22 W/kg; Power Drift = -0.01 dB

Peak SAR (extrapolated) = 0.644 W/kg

SAR(1 g) = 0.223 W/kg



PCTEST

DUT: A3LSMF711B1; Type: Portable Handset; Serial: 1629M

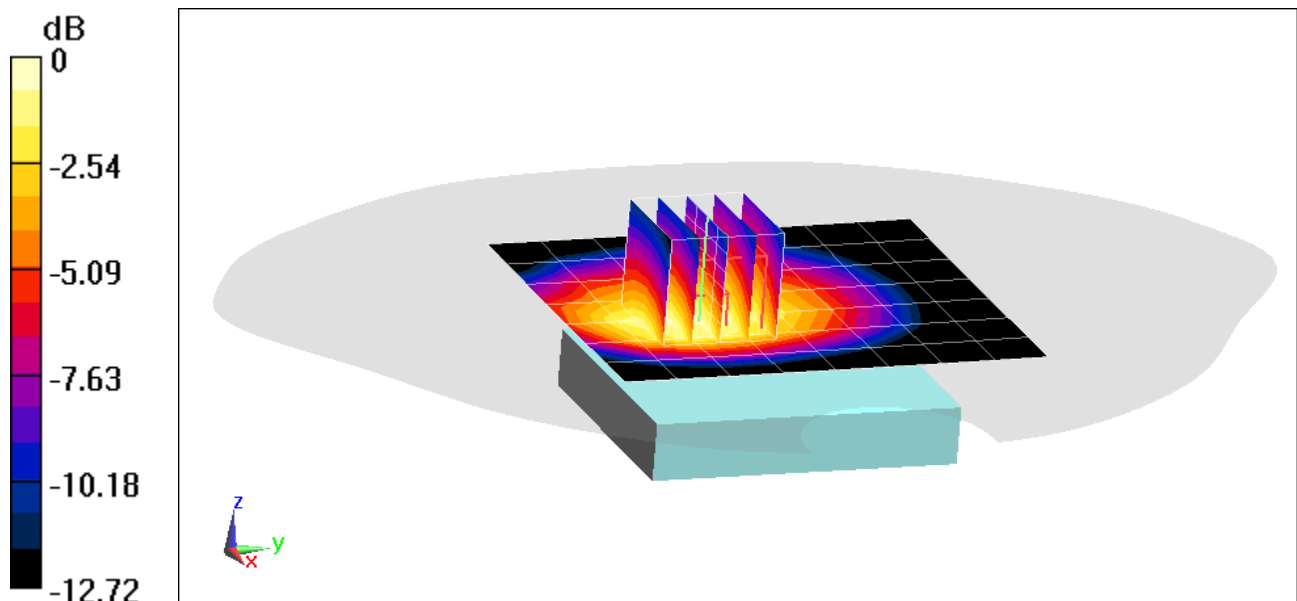
Communication System: UID 0, GSM; Frequency: 824.2 MHz; Duty Cycle: 1:8.3
Medium: 835 Body; Medium parameters used (interpolated):
 $f = 824.2$ MHz; $\sigma = 0.931$ S/m; $\epsilon_r = 53.35$; $\rho = 1000$ kg/m³
Phantom section: Flat Section; Space: 1.5 cm

Test Date: 08/25/2021; Ambient Temp: 23.4°C; Tissue Temp: 22.5°C

Probe: EX3DV4 - SN7409; ConvF(9.66, 9.66, 9.66) @ 824.2 MHz; Calibrated: 6/21/2021
Sensor-Surface: 1.4mm (Mechanical Surface Detection)
Electronics: DAE4 Sn1334; Calibrated: 6/15/2021
Phantom: Twin-SAM V5.0 Front (20); Type: QD 000 P40 CD; Serial: 1759
Measurement SW: DASY52, Version 52.10 (4);SEMCAD X Version 14.6.14 (7483)

Mode: GSM 850 Closed, Body SAR, Back side, Low.ch

Area Scan (8x9x1): Measurement grid: dx=15mm, dy=15mm
Zoom Scan (5x5x7)/Cube 0: Measurement grid: dx=8mm, dy=8mm, dz=5mm
Reference Value = 16.27 V/m; Power Drift = 0.04 dB
Peak SAR (extrapolated) = 0.363 W/kg
SAR(1 g) = 0.236 W/kg



0 dB = 0.315 W/kg = -5.02 dBW/kg

PCTEST

DUT: A3LSMF711B1; Type: Portable Handset; Serial: 1629M

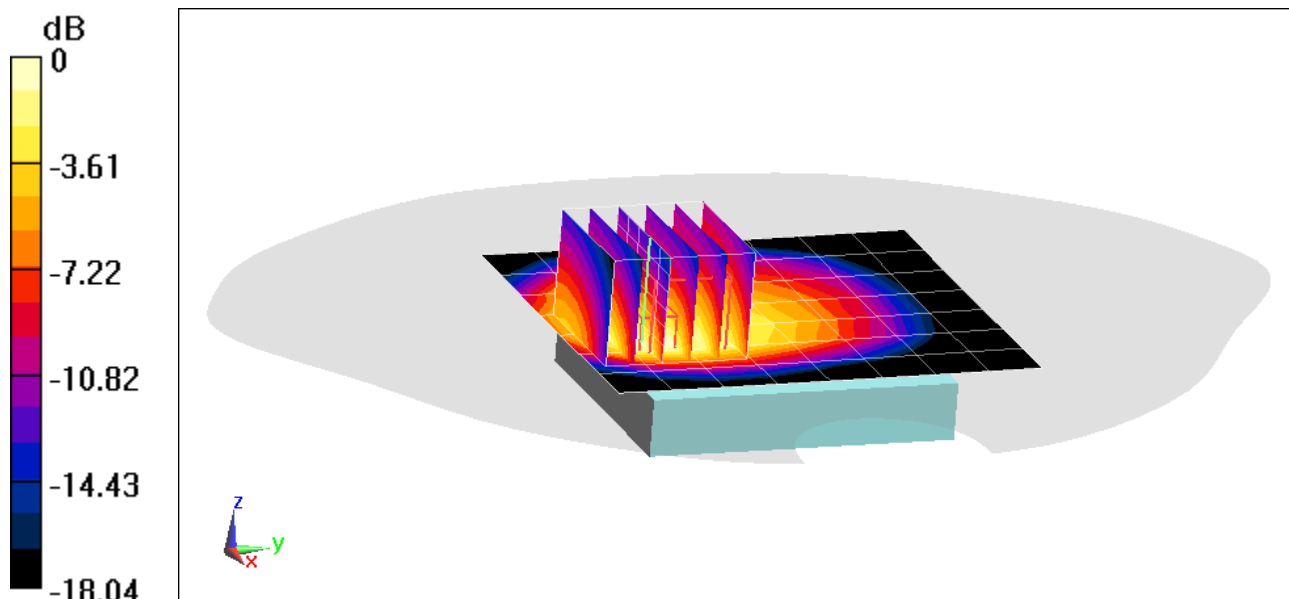
Communication System: UID 0, GSM GPRS; 3 Tx slots; Frequency: 836.6 MHz; Duty Cycle: 1:2.76
Medium: 835 Body; Medium parameters used (interpolated):
 $f = 836.6$ MHz; $\sigma = 0.945$ S/m; $\epsilon_r = 53.243$; $\rho = 1000$ kg/m³
Phantom section: Flat Section; Space: 0.5 cm

Test Date: 08/25/2021; Ambient Temp: 23.4°C; Tissue Temp: 22.5°C

Probe: EX3DV4 - SN7409; ConvF(9.66, 9.66, 9.66) @ 836.6 MHz; Calibrated: 6/21/2021
Sensor-Surface: 1.4mm (Mechanical Surface Detection)
Electronics: DAE4 Sn1334; Calibrated: 6/15/2021
Phantom: Twin-SAM V5.0 Front (20); Type: QD 000 P40 CD; Serial: 1759
Measurement SW: DASY52, Version 52.10 (4);SEMCAD X Version 14.6.14 (7483)

Mode: GPRS 850 Closed, Body SAR, Back side, Mid.ch, 3 Tx Slots

Area Scan (8x9x1): Measurement grid: dx=15mm, dy=15mm
Zoom Scan (6x6x7)/Cube 0: Measurement grid: dx=8mm, dy=8mm, dz=5mm
Reference Value = 21.55 V/m; Power Drift = -0.12 dB
Peak SAR (extrapolated) = 0.935 W/kg
SAR(1 g) = 0.455 W/kg



PCTEST

DUT: A3LSMF711B1; Type: Portable Handset; Serial: 1262M

Communication System: UID 0, GSM; Frequency: 1850.2 MHz; Duty Cycle: 1:8.3
Medium: 1900 Body; Medium parameters used (interpolated):
 $f = 1850.2$ MHz; $\sigma = 1.526$ S/m; $\epsilon_r = 51.45$; $\rho = 1000$ kg/m³
Phantom section: Flat Section; Space: 1.5 cm

Test Date: 08/25/2021; Ambient Temp: 21.6°C; Tissue Temp: 21.3°C

Probe: EX3DV4 - SN7410; ConvF(7.7, 7.7, 7.7) @ 1850.2 MHz; Calibrated: 7/20/2021
Sensor-Surface: 1.4mm (Mechanical Surface Detection)
Electronics: DAE4 Sn1583; Calibrated: 7/13/2021
Phantom: Twin-SAM V5.0 (Front); Type: QD 000 P40 CD; Serial: 1792
Measurement SW: DASY52, Version 52.10 (4);SEMCAD X Version 14.6.14 (7483)

Mode: GSM 1900 Open, Body SAR, Back side, Low.ch

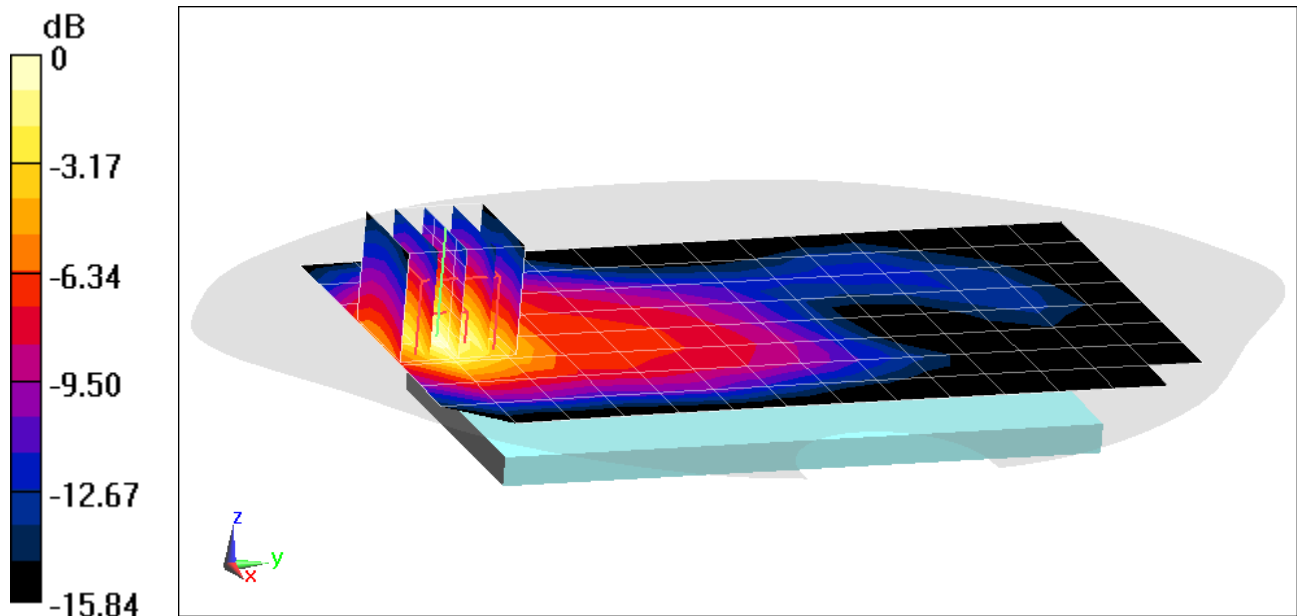
Area Scan (9x15x1): Measurement grid: dx=15mm, dy=15mm

Zoom Scan (5x5x7)/Cube 0: Measurement grid: dx=8mm, dy=8mm, dz=5mm

Reference Value = 13.11 V/m; Power Drift = -0.06 dB

Peak SAR (extrapolated) = 0.387 W/kg

SAR(1 g) = 0.235 W/kg



0 dB = 0.333 W/kg = -4.78 dBW/kg

PCTEST

DUT: A3LSMF711B1; Type: Portable Handset; Serial: 2635M

Communication System: UID 0, GSM1900 GPRS; 3 Tx slots (0); Frequency: 1909.8 MHz; Duty Cycle: 1:2.76

Medium: 1900 Body; Medium parameters used:

$f = 1910$ MHz; $\sigma = 1.53$ S/m; $\epsilon_r = 52.04$; $\rho = 1000$ kg/m³

Phantom section: Flat Section ; Space: 0.5 cm

Medium Notes: Test Date: 09/08/2021; Ambient Temp: 24.3°C; Tissue Temp: 23.0°C

Probe: EX3DV4 - SN7410; ConvF(7.7, 7.7, 7.7) @ 1909.8 MHz; Calibrated: 7/20/2021

Sensor-Surface: 1.4mm (Mechanical Surface Detection)

Electronics: DAE4 Sn1583; Calibrated: 7/13/2021

Phantom: Twin-SAM V5.0 (Front); Type: QD 000 P40 CD; Serial: 1792

Measurement SW: DASY52, Version 52.10 (4);SEMCAD X Version 14.6.14 (7483)

Mode: GPRS 1900 Closed, Body SAR, Bottom Edge, High.ch, 3 Tx Slots

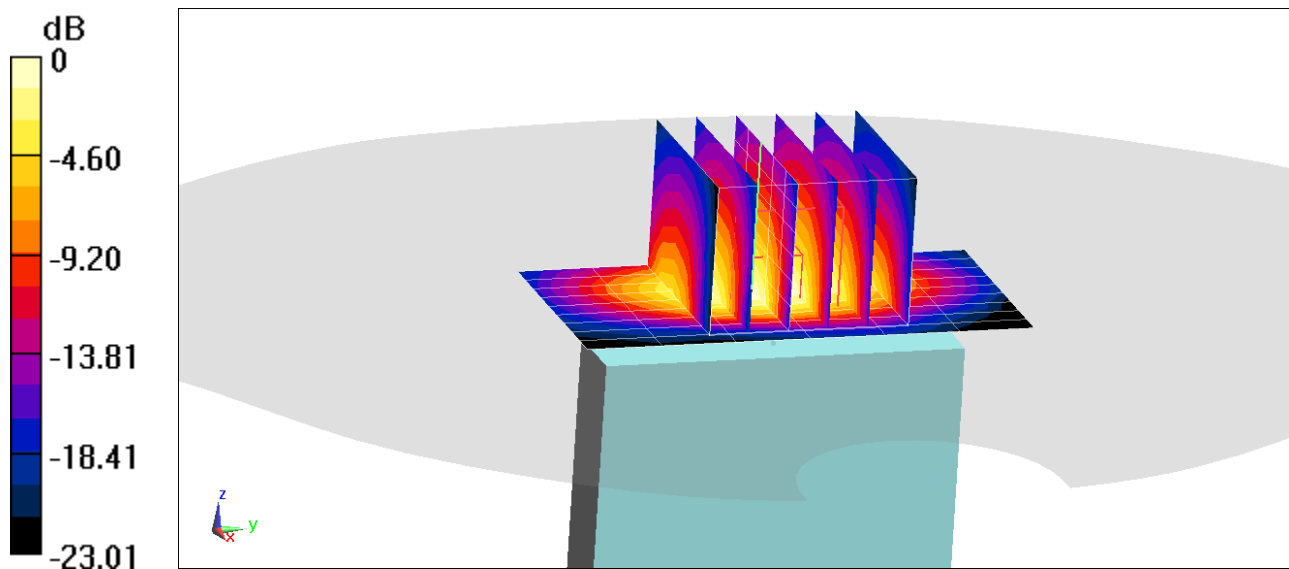
Area Scan (10x7x1): Measurement grid: dx=5mm, dy=15mm

Zoom Scan (6x6x7)/Cube 0: Measurement grid: dx=8mm, dy=8mm, dz=5mm

Reference Value = 22.39 V/m; Power Drift = -0.14 dB

Peak SAR (extrapolated) = 1.26 W/kg

SAR(1 g) = 0.664 W/kg



0 dB = 1.00 W/kg = 0.00 dBW/kg

PCTEST

DUT: A3LSMF711B1; Type: Portable Handset; Serial: 1274M

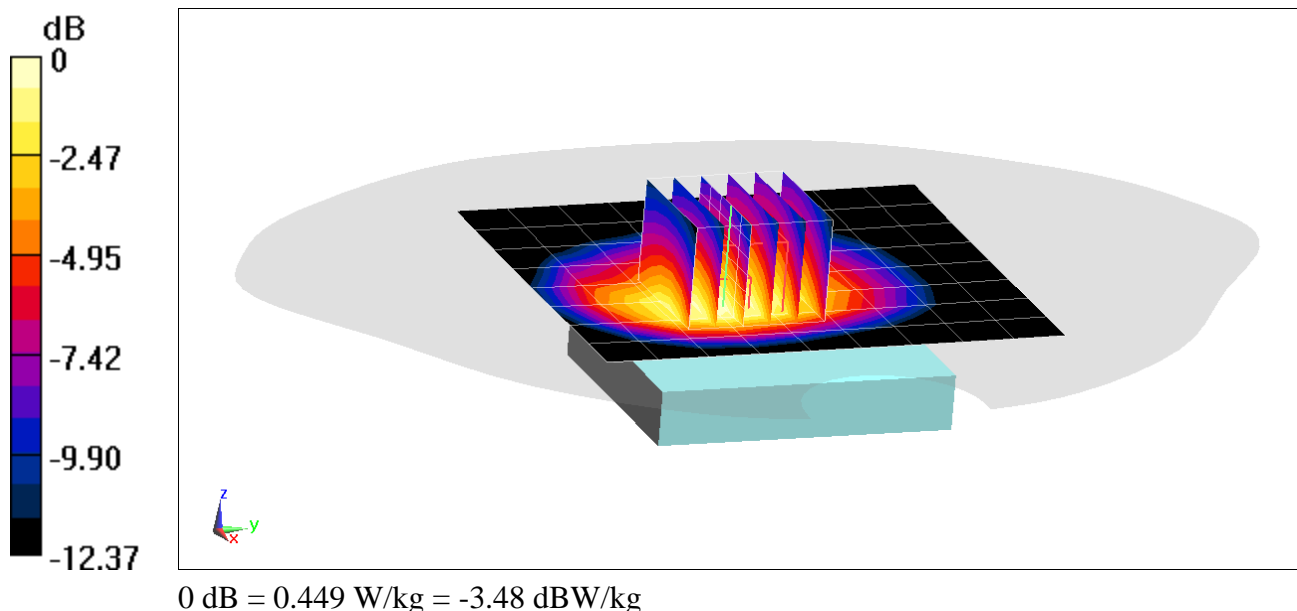
Communication System: UID 0, UMTS; Frequency: 836.6 MHz; Duty Cycle: 1:1
Medium: 835 Body; Medium parameters used (interpolated):
 $f = 836.6 \text{ MHz}$; $\sigma = 0.945 \text{ S/m}$; $\epsilon_r = 52.94$; $\rho = 1000 \text{ kg/m}^3$
Phantom section: Flat Section; Space: 1.5 cm

Test Date: 08/23/2021; Ambient Temp: 22.5°C; Tissue Temp: 21.7°C

Probe: EX3DV4 - SN7409; ConvF(9.66, 9.66, 9.66) @ 836.6 MHz; Calibrated: 6/21/2021
Sensor-Surface: 1.4mm (Mechanical Surface Detection)
Electronics: DAE4 Sn1334; Calibrated: 6/15/2021
Phantom: Twin-SAM V5.0 Front (20); Type: QD 000 P40 CD; Serial: 1759
Measurement SW: DASY52, Version 52.10 (4);SEMCAD X Version 14.6.14 (7483)

Mode: UMTS 850 Closed, Body SAR, Back side, Mid.ch

Area Scan (9x10x1): Measurement grid: $dx=15\text{mm}$, $dy=15\text{mm}$
Zoom Scan (6x6x7)/Cube 0: Measurement grid: $dx=8\text{mm}$, $dy=8\text{mm}$, $dz=5\text{mm}$
Reference Value = 19.48 V/m; Power Drift = 0.02 dB
Peak SAR (extrapolated) = 0.515 W/kg
SAR(1 g) = 0.345 W/kg



PCTEST

DUT: A3LSMF711B1; Type: Portable Handset; Serial: 1274M

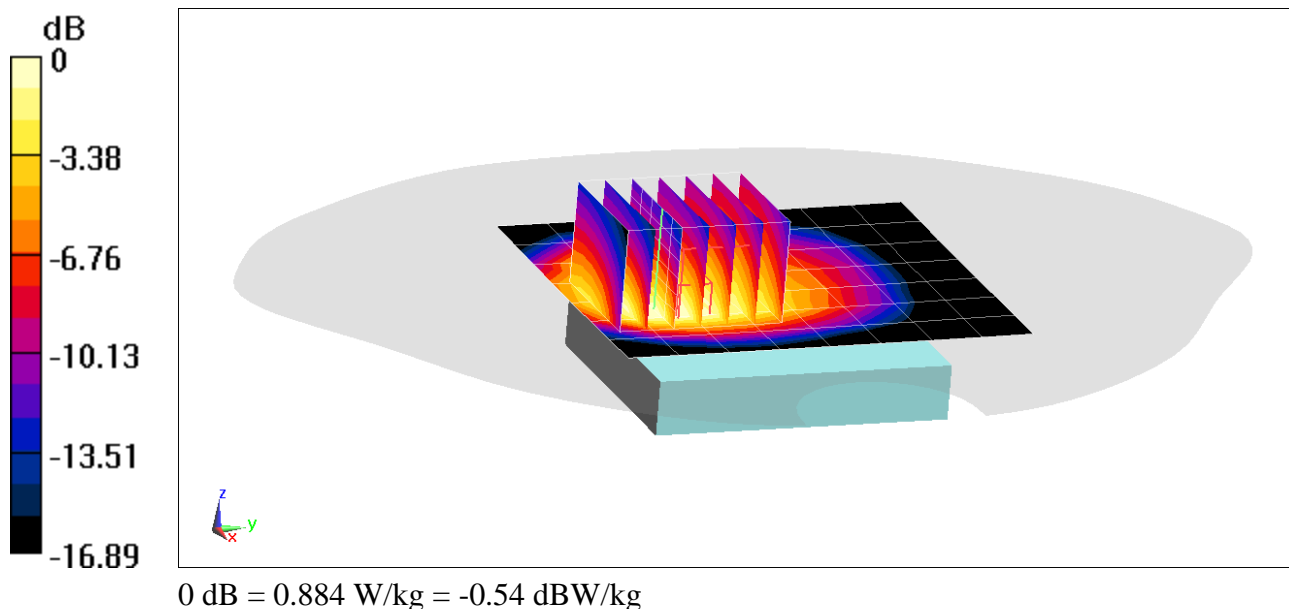
Communication System: UID 0, UMTS; Frequency: 826.4 MHz; Duty Cycle: 1:1
Medium: 835 Body; Medium parameters used (interpolated):
 $f = 826.4$ MHz; $\sigma = 0.934$ S/m; $\epsilon_r = 53.339$; $\rho = 1000$ kg/m³
Phantom section: Flat Section; Space: 0.5 cm

Medium Notes: Test Date: 08/31/2021; Ambient Temp: 23.2°C; Tissue Temp: 22.6°C

Probe: EX3DV4 - SN7409; ConvF(9.66, 9.66, 9.66) @ 826.4 MHz; Calibrated: 6/21/2021
Sensor-Surface: 1.4mm (Mechanical Surface Detection)
Electronics: DAE4 Sn1334; Calibrated: 6/15/2021
Phantom: Twin-SAM V5.0 Front (20); Type: QD 000 P40 CD; Serial: 1759
Measurement SW: DASY52, Version 52.10 (4);SEMCAD X Version 14.6.14 (7483)

Mode: UMTS 850 Closed, Body SAR, Back side, Low.ch

Area Scan (8x9x1): Measurement grid: dx=15mm, dy=15mm
Zoom Scan (6x7x7)/Cube 0: Measurement grid: dx=8mm, dy=8mm, dz=5mm
Reference Value = 26.48 V/m; Power Drift = -0.12 dB
Peak SAR (extrapolated) = 1.12 W/kg
SAR(1 g) = 0.598 W/kg



PCTEST

DUT: A3LSMF711B1; Type: Portable Handset; Serial: 2635M

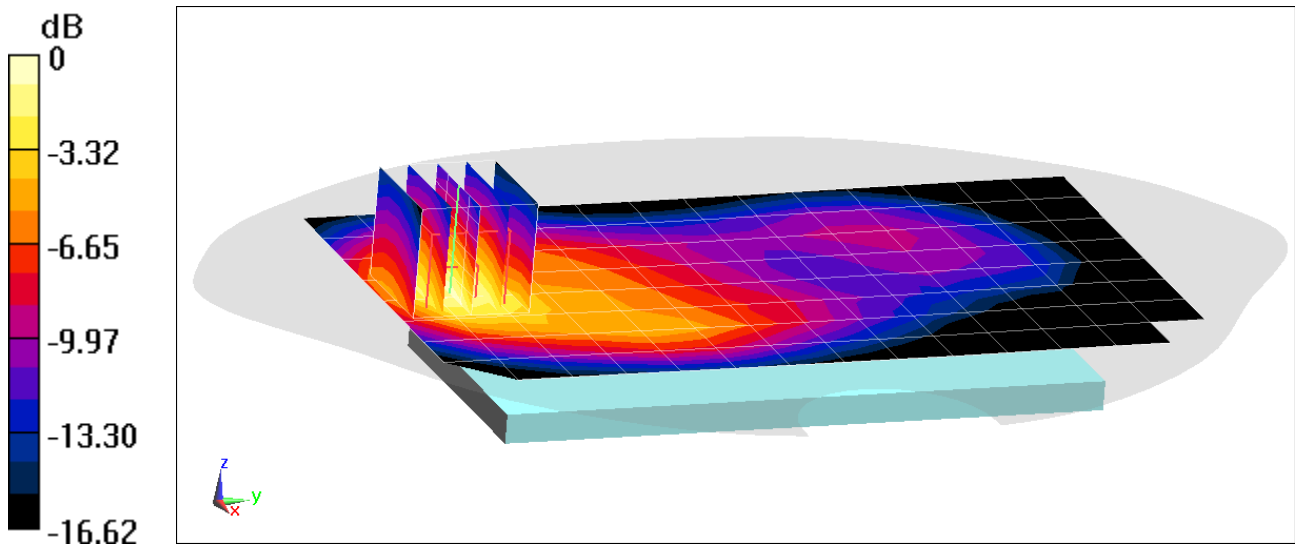
Communication System: UID 0, UMTS; Frequency: 1712.4 MHz; Duty Cycle: 1:1
Medium: 1750 Body; Medium parameters used (interpolated):
 $f = 1712.4$ MHz; $\sigma = 1.447$ S/m; $\epsilon_r = 51.454$; $\rho = 1000$ kg/m³
Phantom section: Flat Section; Space: 1.5 cm

Test Date: 08/27/2021; Ambient Temp: 22.0°C; Tissue Temp: 22.4°C

Probe: EX3DV4 - SN7357; ConvF(8.12, 8.12, 8.12) @ 1712.4 MHz; Calibrated: 4/19/2021
Sensor-Surface: 1.4mm (Mechanical Surface Detection)
Electronics: DAE4 Sn1407; Calibrated: 4/7/2021
Phantom: Twin-SAM V5.0 Front (20); Type: QD 000 P40 CD; Serial: 1686
Measurement SW: DASY52, Version 52.10 (4);SEMCAD X Version 14.6.14 (7483)

Mode: UMTS 1750 Open, Body SAR, Back side, Low.ch

Area Scan (9x15x1): Measurement grid: dx=15mm, dy=15mm
Zoom Scan (5x5x7)/Cube 0: Measurement grid: dx=8mm, dy=8mm, dz=5mm
Reference Value = 19.39 V/m; Power Drift = 0.07 dB
Peak SAR (extrapolated) = 0.792 W/kg
SAR(1 g) = 0.494 W/kg



0 dB = 0.688 W/kg = -1.62 dBW/kg

PCTEST

DUT: A3LSMF711B1; Type: Portable Handset; Serial: 2635M

Communication System: UID 0, UMTS; Frequency: 1712.4 MHz; Duty Cycle: 1:1
Medium: 1750 Body; Medium parameters used (interpolated):
 $f = 1712.4$ MHz; $\sigma = 1.501$ S/m; $\epsilon_r = 51.614$; $\rho = 1000$ kg/m³
Phantom section: Flat Section; Space: 0.5 cm

Test Date: 09/07/2021; Ambient Temp: 23.3°C; Tissue Temp: 21.4°C

Probe: EX3DV4 - SN7357; ConvF(8.12, 8.12, 8.12) @ 1712.4 MHz; Calibrated: 4/19/2021
Sensor-Surface: 1.4mm (Mechanical Surface Detection)
Electronics: DAE4 Sn1407; Calibrated: 4/7/2021
Phantom: Twin-SAM V5.0 Front (20); Type: QD 000 P40 CD; Serial: 1686
Measurement SW: DASY52, Version 52.10 (4);SEMCAD X Version 14.6.14 (7483)

Mode: UMTS 1750 Closed, Body SAR, Bottom Edge, Low.ch

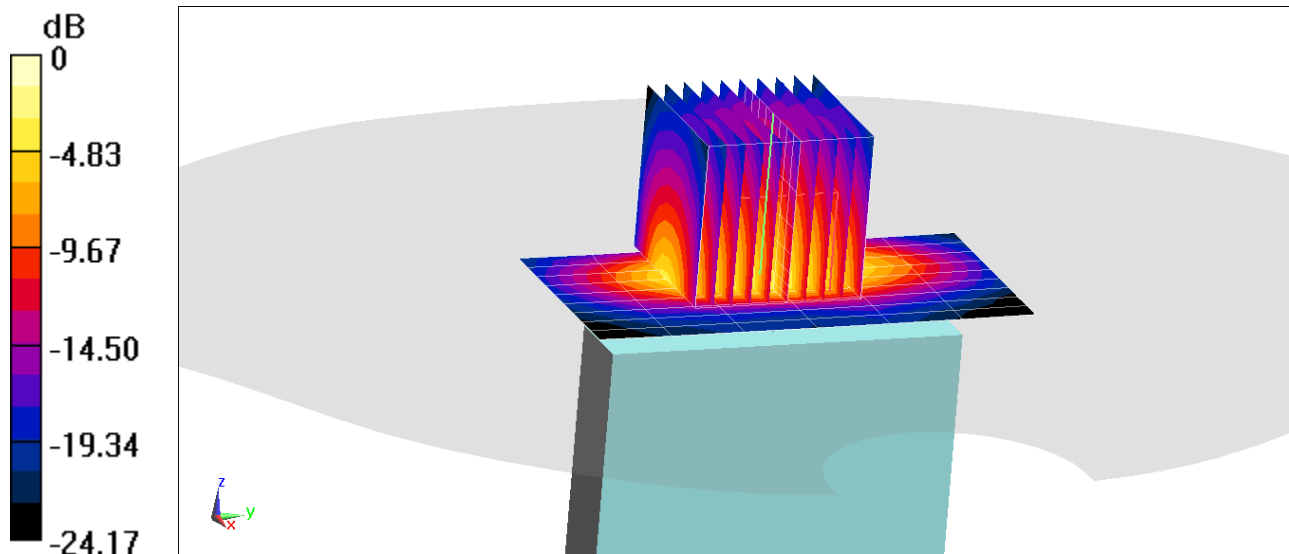
Area Scan (10x7x1): Measurement grid: dx=5mm, dy=15mm

Zoom Scan (10x10x8)/Cube 0: Measurement grid: dx=3.8mm, dy=3.8mm, dz=1.4mm; Graded Ratio: 1.4

Reference Value = 19.46 V/m; Power Drift = 0.00 dB

Peak SAR (extrapolated) = 1.05 W/kg

SAR(1 g) = 0.495 W/kg



0 dB = 0.797 W/kg = -0.99 dBW/kg

PCTEST

DUT: A3LSMF711B1; Type: Portable Handset; Serial: 1262M

Communication System: UID 0, UMTS; Frequency: 1852.4 MHz; Duty Cycle: 1:1
Medium: 1900 Body; Medium parameters used (interpolated):
 $f = 1852.4$ MHz; $\sigma = 1.528$ S/m; $\epsilon_r = 51.213$; $\rho = 1000$ kg/m³
Phantom section: Flat Section; Space: 1.5 cm

Test Date: 08/27/2021; Ambient Temp: 21.6°C; Tissue Temp: 21.5°C

Probe: EX3DV4 - SN7410; ConvF(7.7, 7.7, 7.7) @ 1852.4 MHz; Calibrated: 7/20/2021
Sensor-Surface: 1.4mm (Mechanical Surface Detection)
Electronics: DAE4 Sn1583; Calibrated: 7/13/2021
Phantom: Twin-SAM V5.0 (Front); Type: QD 000 P40 CD; Serial: 1792
Measurement SW: DASY52, Version 52.10 (4);SEMCAD X Version 14.6.14 (7483)

Mode: UMTS 1900 Open, Body SAR, Back side, Low.ch

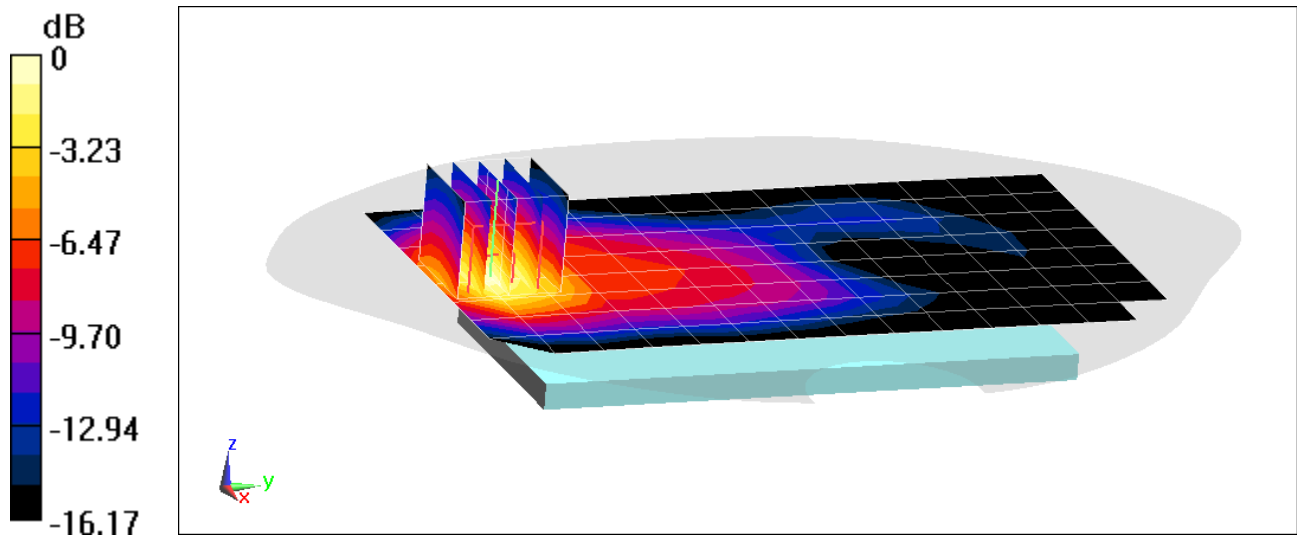
Area Scan (9x15x1): Measurement grid: dx=15mm, dy=15mm

Zoom Scan (5x5x7)/Cube 0: Measurement grid: dx=8mm, dy=8mm, dz=5mm

Reference Value = 19.59 V/m; Power Drift = 0.02 dB

Peak SAR (extrapolated) = 0.875 W/kg

SAR(1 g) = 0.528 W/kg



0 dB = 0.758 W/kg = -1.20 dBW/kg

PCTEST

DUT: A3LSMF711B1; Type: Portable Handset; Serial: 2635M

Communication System: UID 0, UMTS (0); Frequency: 1852.4 MHz; Duty Cycle: 1:1
Medium: 1900 Body; Medium parameters used (interpolated):
 $f = 1852.4$ MHz; $\sigma = 1.516$ S/m; $\epsilon_r = 52.102$; $\rho = 1000$ kg/m³
Phantom section: Flat Section ; Space: 0.5 cm

Medium Notes: Test Date: 09/13/2021; Ambient Temp: 21.3°C; Tissue Temp: 21.4°C

Probe: EX3DV4 - SN7410; ConvF(7.7, 7.7, 7.7) @ 1852.4 MHz; Calibrated: 7/20/2021
Sensor-Surface: 1.4mm (Mechanical Surface Detection)
Electronics: DAE4 Sn1583; Calibrated: 7/13/2021
Phantom: Twin-SAM V5.0 (Front); Type: QD 000 P40 CD; Serial: 1792
Measurement SW: DASY52, Version 52.10 (4);SEMCAD X Version 14.6.14 (7483)

Mode: UMTS 1900 Closed, Body SAR, Bottom Edge, Low.ch

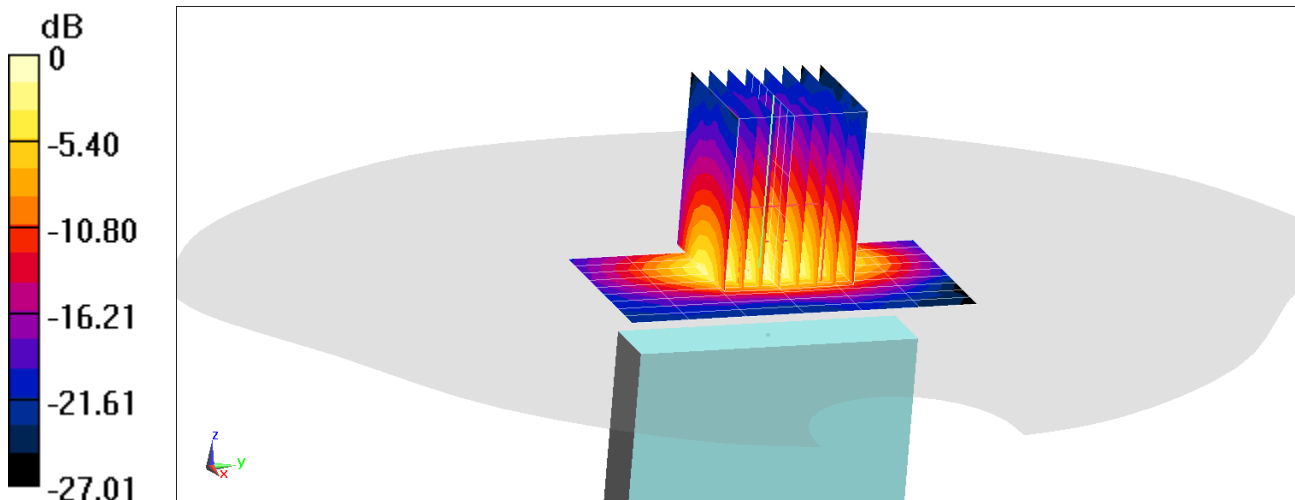
Area Scan (10x7x1): Measurement grid: dx=5mm, dy=15mm

Zoom Scan (8x8x8)/Cube 0: Measurement grid: dx=4.8mm, dy=4.8mm, dz=1.4mm

Reference Value = 17.72 V/m; Power Drift = -0.14 dB

Peak SAR (extrapolated) = 0.870 W/kg

SAR(1 g) = 0.424 W/kg



PCTEST

DUT: A3LSMF711B1; Type: Portable Handset; Serial: 1271M

Communication System: UID:10175-CAG, LTE-FDD; MAIA: Y; Frequency: 707.5 MHz

Medium: 750 Body; Medium parameters used:

$f = 707.5$ MHz; $\text{cond} = 0.955$ S/m; $\text{perm} = 53.8$; $\text{density} = 1000$ kg/m³

Phantom Section: Flat; Space: 15.00 mm

Test Date: 08/23/2021; Ambient Temp: 20.5°C; Tissue Temp: 21.8°C

Probe: EX3DV4 - SN7571; ConvF:(10.24,10.24,10.24); Calibrated: 2020-12-11

Sensor-Surface: 1.4mm (All points)

Electronics: DAE4 Sn1533; Calibrated: 2020-12-07

Phantom: Twin-SAM V5.0; Serial: 1648

Measurement SW: cDASY6 Module SAR V16.0.0.116

**Mode: LTE Band 12 Closed, Body SAR, Back side, Mid.ch,
10 MHz Bandwidth, QPSK, 1 RB, 0 RB Offset**

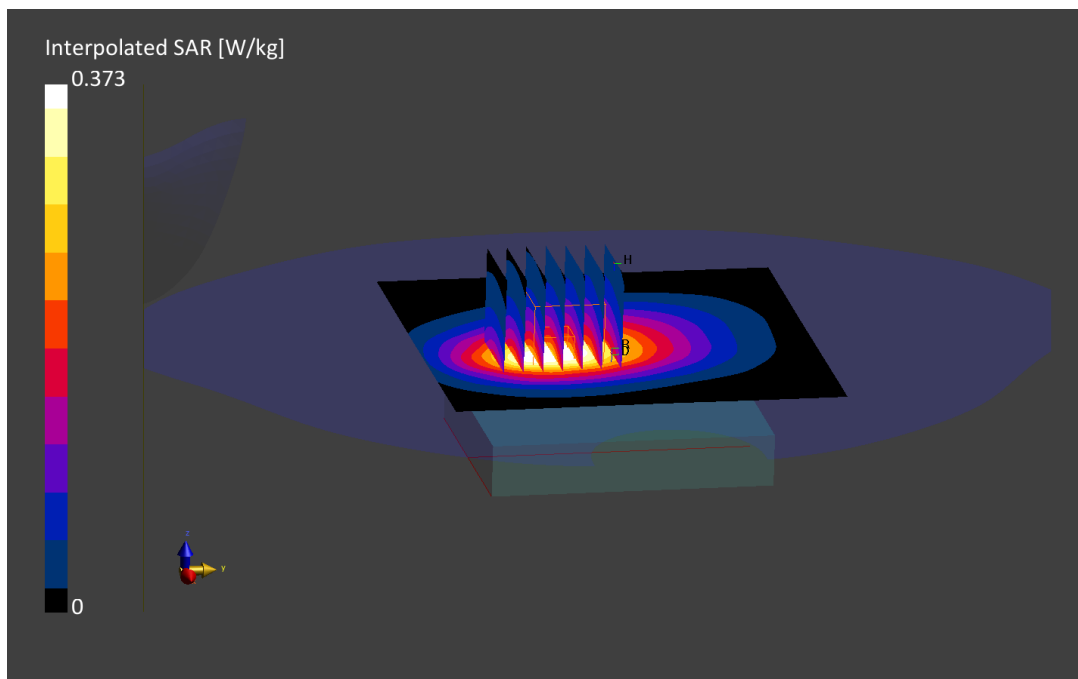
Area Scan (120.0 x 120.0): Measurement grid: $dx=15.0$ mm, $dy=15.0$ mm

Zoom Scan (30.0 x 30.0 x 30.0): Measurement grid: $dx=6.0$ mm, $dy=6.0$ mm, $dz=1.5$ mm; Graded Ratio: 1.5

Reference Value = 0.22 W/kg; Power Drift = 0.02 dB

Peak SAR (extrapolated) = 0.374 W/kg

SAR(1 g) = 0.234 W/kg



PCTEST

DUT: A3LSMF711B1; Type: Portable Handset; Serial: 1271M

Communication System: UID:10175-CAG, LTE-FDD; MAIA: Y; Frequency: 707.5 MHz

Medium: 750 Body; Medium parameters used:

$f = 707.5$ MHz; $\text{cond} = 0.955$ S/m; $\text{perm} = 53.8$; $\text{density} = 1000$ kg/m³

Phantom Section: Flat; Space: 5.00 mm

Test Date: 08/23/2021; Ambient Temp: 20.5°C; Tissue Temp: 21.8°C

Probe: EX3DV4 - SN7571; ConvF:(10.24,10.24,10.24); Calibrated: 2020-12-11

Sensor-Surface: 1.4mm (All points)

Electronics: DAE4 Sn1533; Calibrated: 2020-12-07

Phantom: Twin-SAM V5.0; Serial: 1648

Measurement SW: cDASY6 Module SAR V16.0.0.116

**Mode: LTE Band 12 Closed, Body SAR, Back side, Mid.ch,
10 MHz Bandwidth, QPSK, 1 RB, 25 RB Offset**

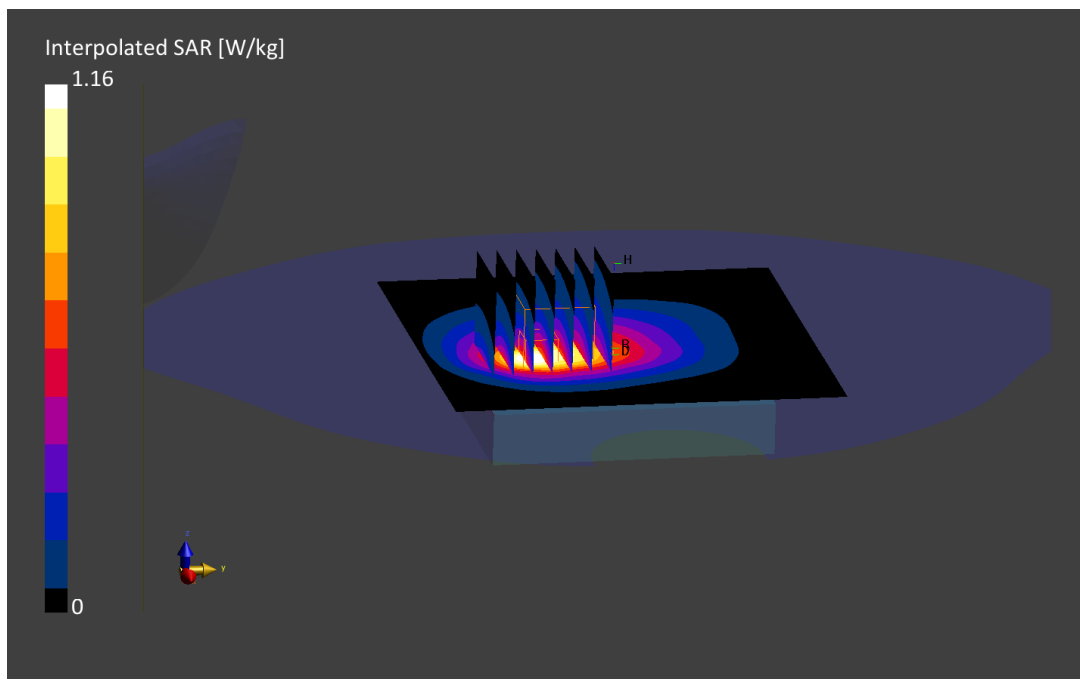
Area Scan (120.0 x 120.0): Measurement grid: $dx=15.0$ mm, $dy=15.0$ mm

Zoom Scan (30.0 x 30.0 x 30.0): Measurement grid: $dx=6.0$ mm, $dy=6.0$ mm, $dz=1.5$ mm; Graded Ratio: 1.5

Reference Value = 0.56 W/kg; Power Drift = -0.04 dB

Peak SAR (extrapolated) = 1.16 W/kg

SAR(1 g) = 0.609 W/kg



PCTEST

DUT: A3LSMF711B1; Type: Portable Handset; Serial: 1271M

Communication System: UID 0, LTE Band 13; Frequency: 782 MHz; Duty Cycle: 1:1

Medium: 750 Body; Medium parameters used (interpolated):

$f = 782 \text{ MHz}$; $\sigma = 0.99 \text{ S/m}$; $\epsilon_r = 52.944$; $\rho = 1000 \text{ kg/m}^3$

Phantom section: Flat Section; Space: 1.5 cm

Test Date: 08/20/2021; Ambient Temp: 23.4°C; Tissue Temp: 21.7°C

Probe: EX3DV4 - SN7357; ConvF(10.29, 10.29, 10.29) @ 782 MHz; Calibrated: 4/19/2021

Sensor-Surface: 1.4mm (Mechanical Surface Detection)

Electronics: DAE4 Sn1407; Calibrated: 4/7/2021

Phantom: Twin-SAM V5.0 Front (20); Type: QD 000 P40 CD; Serial: 1686

Measurement SW: DASY52, Version 52.10 (4);SEMCAD X Version 14.6.14 (7483)

**Mode: LTE Band 13 Open, Body SAR, Back side, Mid.ch,
10 MHz Bandwidth, QPSK, 1 RB, 25 RB Offset**

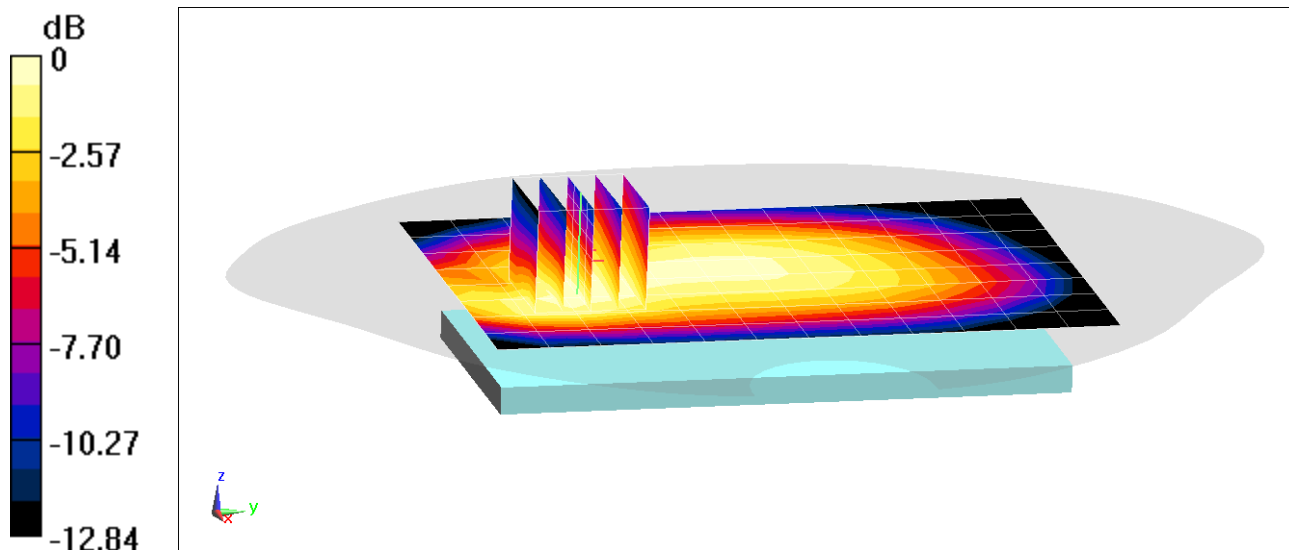
Area Scan (9x13x1): Measurement grid: dx=15mm, dy=15mm

Zoom Scan (5x5x7)/Cube 0: Measurement grid: dx=8mm, dy=8mm, dz=5mm

Reference Value = 13.88 V/m; Power Drift = -0.05 dB

Peak SAR (extrapolated) = 0.277 W/kg

SAR(1 g) = 0.184 W/kg



0 dB = 0.243 W/kg = -6.14 dBW/kg

PCTEST

DUT: A3LSMF711B1; Type: Portable Handset; Serial: 1271M

Communication System: UID:10154-CAG, LTE-FDD; MAIA: Y; Frequency: 782.0 MHz

Medium: 750 Body; Medium parameters used:

$f = 782.0$ MHz; $\text{cond} = 0.975$ S/m; $\text{perm} = 53.6$; $\text{density} = 1000$ kg/m³

Phantom Section: Flat; Space: 5.00 mm

Test Date: 08/30/2021; Ambient Temp: 23.5°C; Tissue Temp: 21.7°C

Probe: EX3DV4 - SN7571; ConvF:(10.24,10.24,10.24); Calibrated: 2020-12-11

Sensor-Surface: 1.4mm (VMS + 6p)

Electronics: DAE4 Sn1533; Calibrated: 2020-12-07

Phantom: Twin-SAM V5.0; Serial: 1648

Measurement SW: cDASY6 Module SAR V16.0.0.116

**Mode: LTE Band 13 Closed, Body SAR, Back side, Mid.ch,
10 MHz Bandwidth, QPSK, 25 RB, 12 RB Offset**

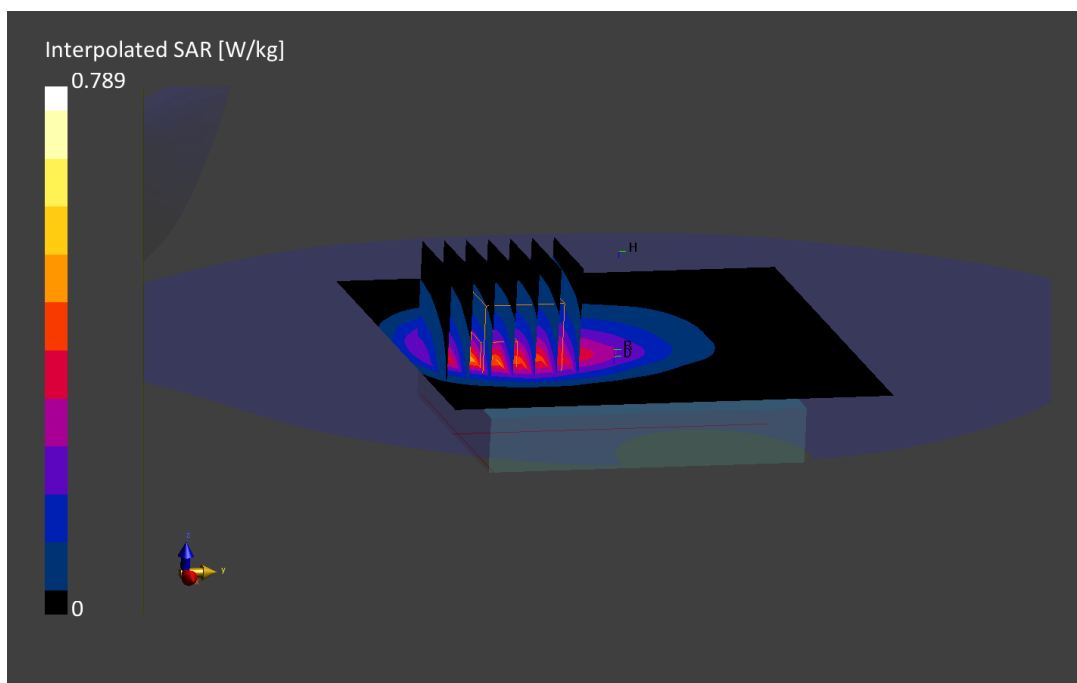
Area Scan (120.0 x 120.0): Measurement grid: $dx=15.0$ mm, $dy=15.0$ mm

Zoom Scan (30.0 x 30.0 x 30.0): Measurement grid: $dx=6.0$ mm, $dy=6.0$ mm, $dz=1.5$ mm; Graded Ratio: 1.5

Reference Value = 0.38 W/kg; Power Drift = -0.01 dB

Peak SAR (extrapolated) = 0.789 W/kg

SAR(1 g) = 0.402 W/kg



PCTEST

DUT: A3LSMF711B1; Type: Portable Handset; Serial: 1629M

Communication System: UID 0, LTE Band 26; Frequency: 831.5 MHz; Duty Cycle: 1:1
Medium: 835 Body; Medium parameters used (interpolated):
 $f = 831.5$ MHz; $\sigma = 0.939$ S/m; $\epsilon_r = 52.988$; $\rho = 1000$ kg/m³
Phantom section: Flat Section; Space: 1.5 cm

Test Date: 08/23/2021; Ambient Temp: 22.5°C; Tissue Temp: 21.7°C

Probe: EX3DV4 - SN7409; ConvF(9.66, 9.66, 9.66) @ 831.5 MHz; Calibrated: 6/21/2021
Sensor-Surface: 1.4mm (Mechanical Surface Detection)
Electronics: DAE4 Sn1334; Calibrated: 6/15/2021
Phantom: Twin-SAM V5.0 Front (20); Type: QD 000 P40 CD; Serial: 1759
Measurement SW: DASY52, Version 52.10 (4);SEMCAD X Version 14.6.14 (7483)

**Mode: LTE Band 26 (Cell.) Closed, Body SAR, Back side, Mid.ch,
15 MHz Bandwidth, QPSK, 1 RB, 36 RB Offset**

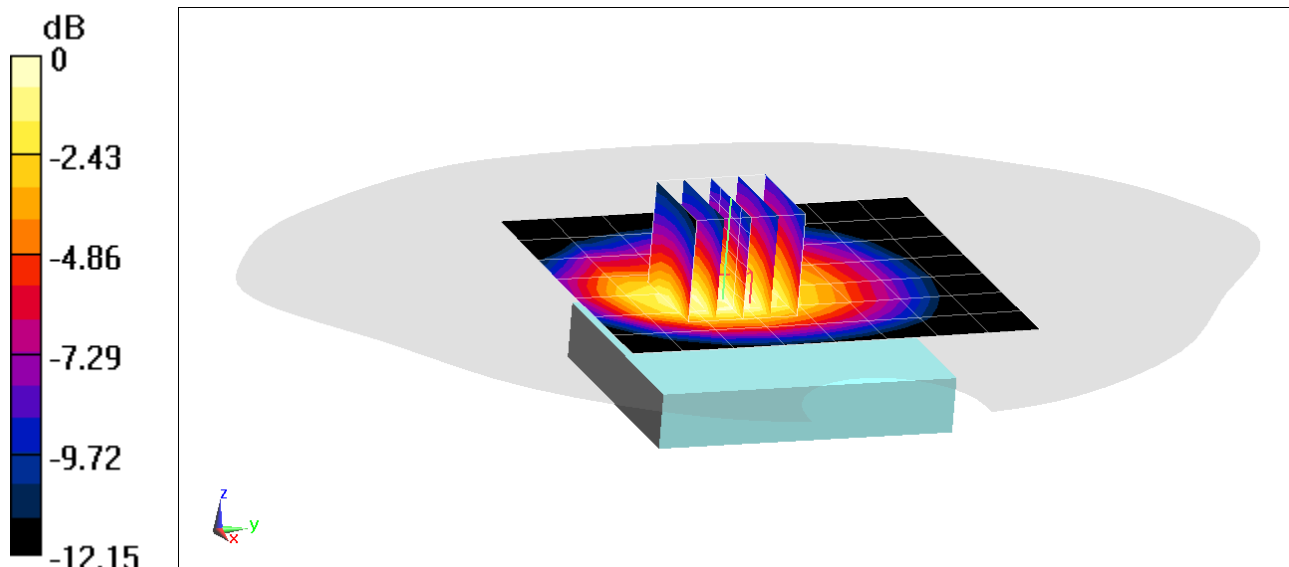
Area Scan (8x9x1): Measurement grid: dx=15mm, dy=15mm

Zoom Scan (5x5x7)/Cube 0: Measurement grid: dx=8mm, dy=8mm, dz=5mm

Reference Value = 17.88 V/m; Power Drift = -0.01 dB

Peak SAR (extrapolated) = 0.434 W/kg

SAR(1 g) = 0.283 W/kg



0 dB = 0.378 W/kg = -4.23 dBW/kg

PCTEST

DUT: A3LSMF711B1; Type: Portable Handset; Serial: 1629M

Communication System: UID 0, LTE Band 26; Frequency: 831.5 MHz; Duty Cycle: 1:1
Medium: 835 Body; Medium parameters used (interpolated):
 $f = 831.5$ MHz; $\sigma = 0.939$ S/m; $\epsilon_r = 52.988$; $\rho = 1000$ kg/m³
Phantom section: Flat Section; Space: 0.5 cm

Test Date: 08/23/2021; Ambient Temp: 22.5°C; Tissue Temp: 21.7°C

Probe: EX3DV4 - SN7409; ConvF(9.66, 9.66, 9.66) @ 831.5 MHz; Calibrated: 6/21/2021
Sensor-Surface: 1.4mm (Mechanical Surface Detection)
Electronics: DAE4 Sn1334; Calibrated: 6/15/2021
Phantom: Twin-SAM V5.0 Front (20); Type: QD 000 P40 CD; Serial: 1759
Measurement SW: DASY52, Version 52.10 (4);SEMCAD X Version 14.6.14 (7483)

**Mode: LTE Band 26 (Cell.) Closed, Body SAR, Back side, Mid.ch,
15 MHz Bandwidth, QPSK, 1 RB, 74 RB Offset**

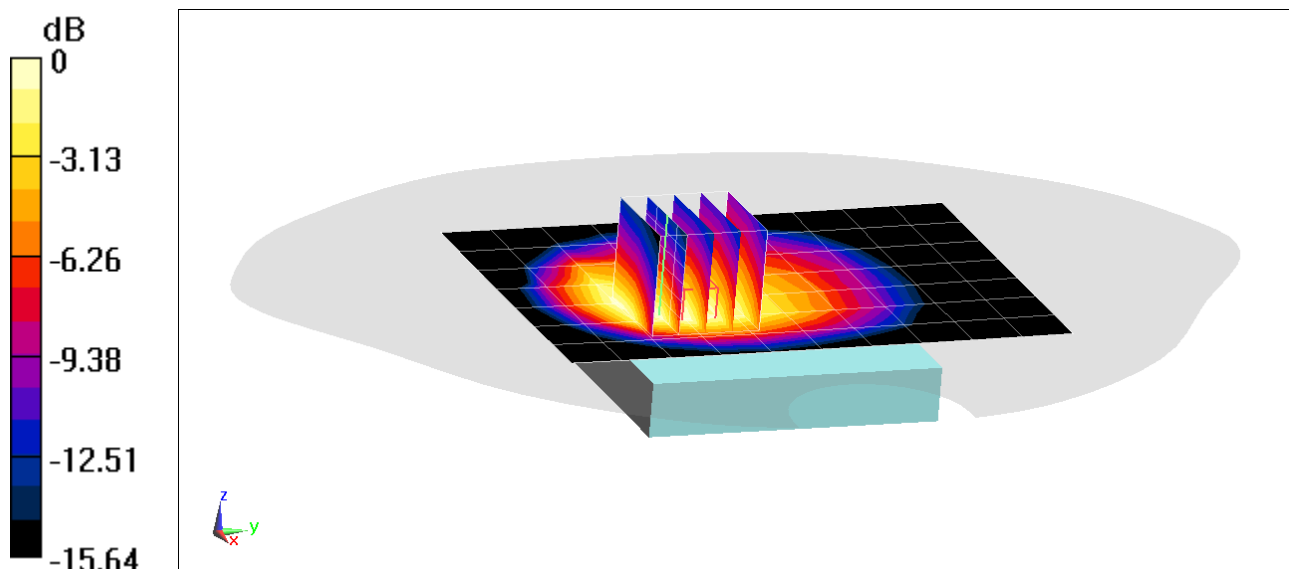
Area Scan (8x11x1): Measurement grid: dx=15mm, dy=15mm

Zoom Scan (5x5x7)/Cube 0: Measurement grid: dx=8mm, dy=8mm, dz=5mm

Reference Value = 24.78 V/m; Power Drift = -0.09 dB

Peak SAR (extrapolated) = 0.986 W/kg

SAR(1 g) = 0.547 W/kg



0 dB = 0.805 W/kg = -0.94 dBW/kg

PCTEST

DUT: A3LSMF711B1; Type: Portable Handset; Serial: 1271M

Communication System: UID 0, LTE Band 66 (AWS); Frequency: 1770 MHz; Duty Cycle: 1:1

Medium: 1750 Body; Medium parameters used:

$f = 1770 \text{ MHz}$; $\sigma = 1.48 \text{ S/m}$; $\epsilon_r = 51.044$; $\rho = 1000 \text{ kg/m}^3$

Phantom section: Flat Section; Space: 1.5 cm

Test Date: 08/19/2021; Ambient Temp: 23.0°C; Tissue Temp: 23.7°C

Probe: EX3DV4 - SN3589; ConvF(7, 7, 7) @ 1770 MHz; Calibrated: 1/20/2021

Sensor-Surface: 1.4mm (Mechanical Surface Detection)

Electronics: DAE4 Sn1558; Calibrated: 1/13/2021

Phantom: Twin-SAM V5.0 front (30); Type: QD 000 P40 CD; Serial: 1646

Measurement SW: DASY52, Version 52.10 (4);SEMCAD X Version 14.6.14 (7483)

**Mode: LTE Band 66 (AWS) Open, Body SAR, Back side, High.ch,
20 MHz Bandwidth, QPSK, 1 RB, 99 RB Offset**

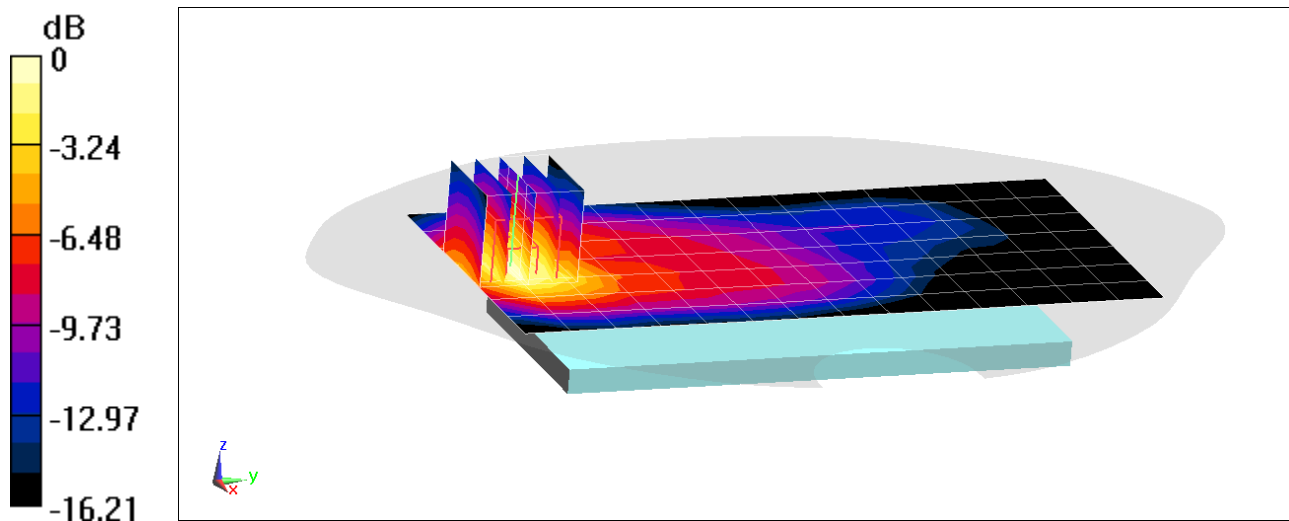
Area Scan (8x15x1): Measurement grid: dx=15mm, dy=15mm

Zoom Scan (5x5x7)/Cube 0: Measurement grid: dx=8mm, dy=8mm, dz=5mm

Reference Value = 19.20 V/m; Power Drift = -0.01 dB

Peak SAR (extrapolated) = 0.805 W/kg

SAR(1 g) = 0.492 W/kg



0 dB = 0.690 W/kg = -1.61 dBW/kg

PCTEST

DUT: A3LSMF711B1; Type: Portable Handset; Serial: 1271M

Communication System: UID 0, LTE Band 66 (AWS); Frequency: 1720 MHz; Duty Cycle: 1:1

Medium: 1750 Body; Medium parameters used:

$f = 1720$ MHz; $\sigma = 1.425$ S/m; $\epsilon_r = 51.218$; $\rho = 1000$ kg/m³

Phantom section: Flat Section; Space: 0.5 cm

Test Date: 08/19/2021; Ambient Temp: 23.0°C; Tissue Temp: 23.7°C

Probe: EX3DV4 - SN3589; ConvF(7, 7, 7) @ 1720 MHz; Calibrated: 1/20/2021

Sensor-Surface: 1.4mm (Mechanical Surface Detection)

Electronics: DAE4 Sn1558; Calibrated: 1/13/2021

Phantom: Twin-SAM V5.0 front (30); Type: QD 000 P40 CD; Serial: 1646

Measurement SW: DASY52, Version 52.10 (4);SEMCAD X Version 14.6.14 (7483)

**Mode: LTE Band 66 (AWS) Closed, Body SAR, Bottom Edge, Low.ch,
20 MHz Bandwidth, QPSK, 50 RB, 25 RB Offset**

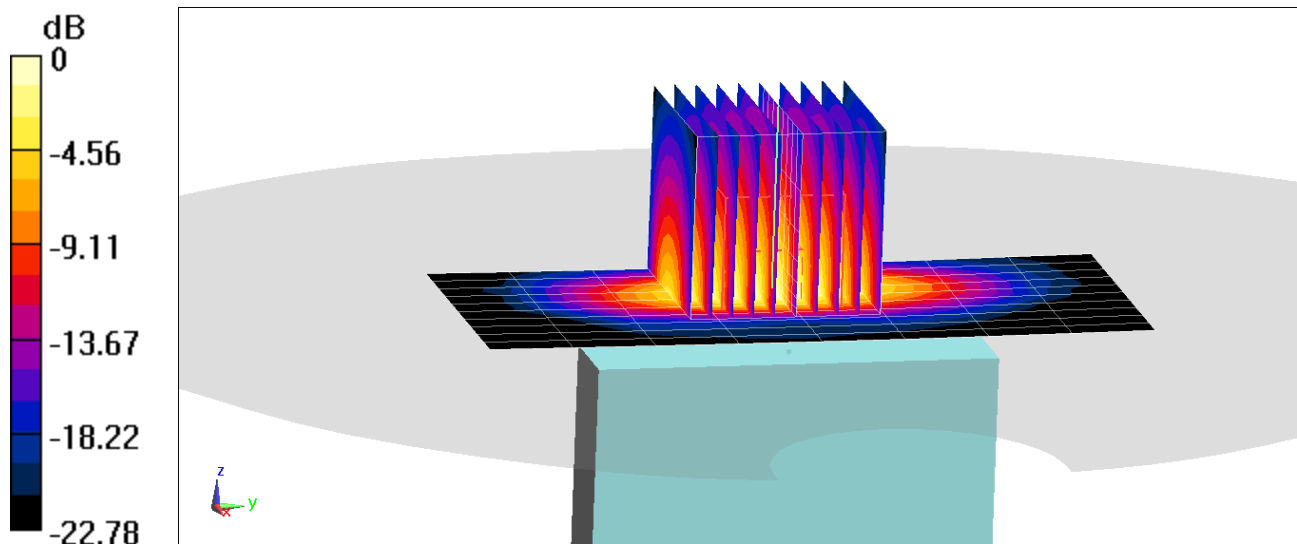
Area Scan (11x9x1): Measurement grid: dx=5mm, dy=15mm

Zoom Scan (10x10x8)/Cube 0: Measurement grid: dx=3.8mm, dy=3.8mm, dz=1.4mm; Graded Ratio: 1.4

Reference Value = 19.84 V/m; Power Drift = -0.03 dB

Peak SAR (extrapolated) = 1.18 W/kg

SAR(1 g) = 0.493 W/kg



0 dB = 0.811 W/kg = -0.91 dBW/kg

PCTEST

DUT: A3LSMF711B1; Type: Portable Handset; Serial: 1262M

Communication System: UID 0, LTE Band 25 (PCS); Frequency: 1860 MHz; Duty Cycle: 1:1
Medium: 1900 Body; Medium parameters used:
 $f = 1860 \text{ MHz}$; $\sigma = 1.536 \text{ S/m}$; $\epsilon_r = 51.185$; $\rho = 1000 \text{ kg/m}^3$
Phantom section: Flat Section; Space: 1.5 cm

Test Date: 08/27/2021; Ambient Temp: 21.6°C; Tissue Temp: 21.5°C

Probe: EX3DV4 - SN7410; ConvF(7.7, 7.7, 7.7) @ 1860 MHz; Calibrated: 7/20/2021
Sensor-Surface: 1.4mm (Mechanical Surface Detection)
Electronics: DAE4 Sn1583; Calibrated: 7/13/2021
Phantom: Twin-SAM V5.0 (Front); Type: QD 000 P40 CD; Serial: 1792
Measurement SW: DASY52, Version 52.10 (4);SEMCAD X Version 14.6.14 (7483)

**Mode: LTE Band 25 (PCS) Open, Body SAR, Back side, Low.ch,
20 MHz Bandwidth, QPSK, 1 RB, 0 RB Offset**

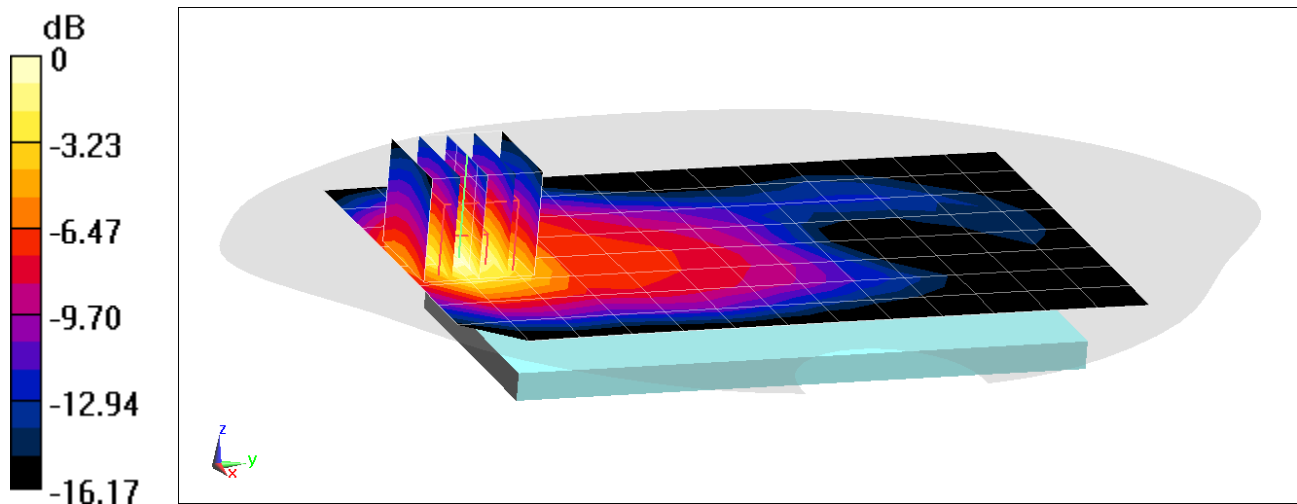
Area Scan (9x14x1): Measurement grid: dx=15mm, dy=15mm

Zoom Scan (5x5x7)/Cube 0: Measurement grid: dx=8mm, dy=8mm, dz=5mm

Reference Value = 19.83 V/m; Power Drift = -0.05 dB

Peak SAR (extrapolated) = 0.904 W/kg

SAR(1 g) = 0.542 W/kg



0 dB = 0.775 W/kg = -1.11 dBW/kg

PCTEST

DUT: A3LSMF711B1; Type: Portable Handset; Serial: 2635M

Communication System: UID 0, LTE Band 25 (PCS); Frequency: 1905 MHz; Duty Cycle: 1:1

Medium: 1900 Body; Medium parameters used:

$f = 1905$ MHz; $\sigma = 1.575$ S/m; $\epsilon_r = 51.941$; $\rho = 1000$ kg/m³

Phantom section: Flat Section ; Space: 0.5 cm

Test Date: 09/13/2021; Ambient Temp: 21.3°C; Tissue Temp: 21.4°C

Probe: EX3DV4 - SN7410; ConvF(7.7, 7.7, 7.7) @ 1905 MHz; Calibrated: 7/20/2021

Sensor-Surface: 1.4mm (Mechanical Surface Detection)

Electronics: DAE4 Sn1583; Calibrated: 7/13/2021

Phantom: Twin-SAM V5.0 (Front); Type: QD 000 P40 CD; Serial: 1792

Measurement SW: DASY52, Version 52.10 (4);SEMCAD X Version 14.6.14 (7483)

**Mode: LTE Band 25 (PCS) Closed, Body SAR, Bottom Edge, High.ch,
20 MHz Bandwidth, QPSK, 1 RB, 99 RB Offset**

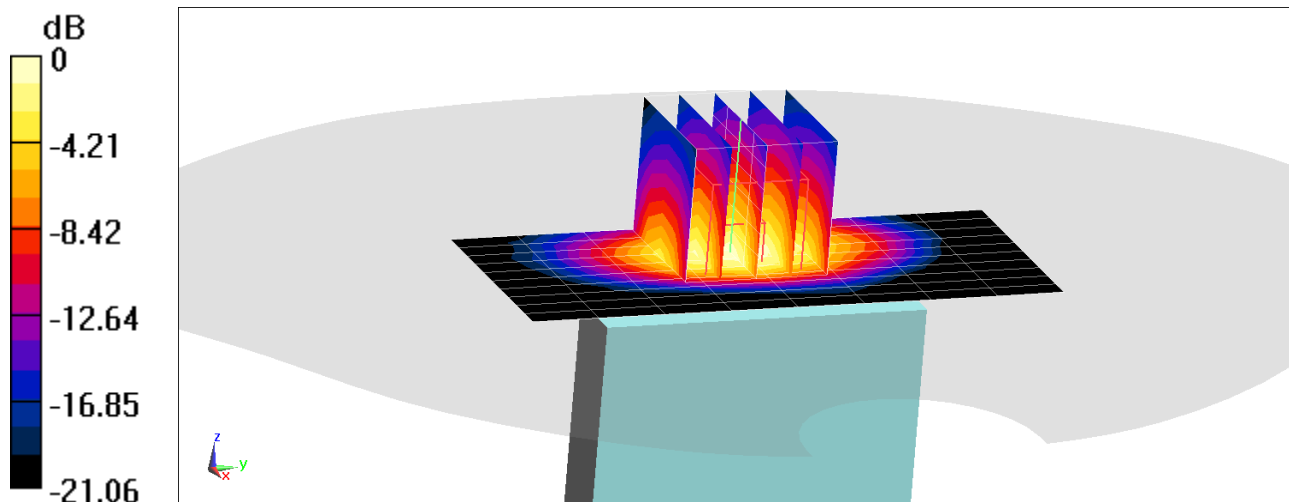
Area Scan (11x9x1): Measurement grid: dx=5mm, dy=15mm

Zoom Scan (5x5x7)/Cube 0: Measurement grid: dx=8mm, dy=8mm, dz=5mm

Reference Value = 20.64 V/m; Power Drift = 0.02 dB

Peak SAR (extrapolated) = 1.15 W/kg

SAR(1 g) = 0.607 W/kg



PCTEST

DUT: A3LSMF711B1; Type: Portable Handset; Serial: 2634M

Communication System: UID:10172-CAG, LTE-TDD; MAIA: Y; Frequency: 2680.0 MHz

Medium: 2450 Body; Medium parameters used:

f = 2680.0 MHz; cond = 2.32 S/m; perm = 50.9; density = 1000 kg/m³

Phantom Section: Flat; Space: 15.00 mm

Test Date: 08/23/2021; Ambient Temp: 21.5°C; Tissue Temp: 21.8°C

Probe: EX3DV4 - SN7526; ConvF:(7.11,7.11,7.11); Calibrated: 2021-03-16

Sensor-Surface: 1.4mm (VMS + 6p)

Electronics: DAE4 Sn1272; Calibrated: 2021-03-18

Phantom: Twin-SAM V5.0; Serial: 1758

Measurement SW: cDASY6 Module SAR V16.0.0.116

**Mode: LTE Band 41 PC2 Open, Body SAR, Back Side, High.ch,
20 MHz Bandwidth, QPSK, 1 RB, 50 RB Offset**

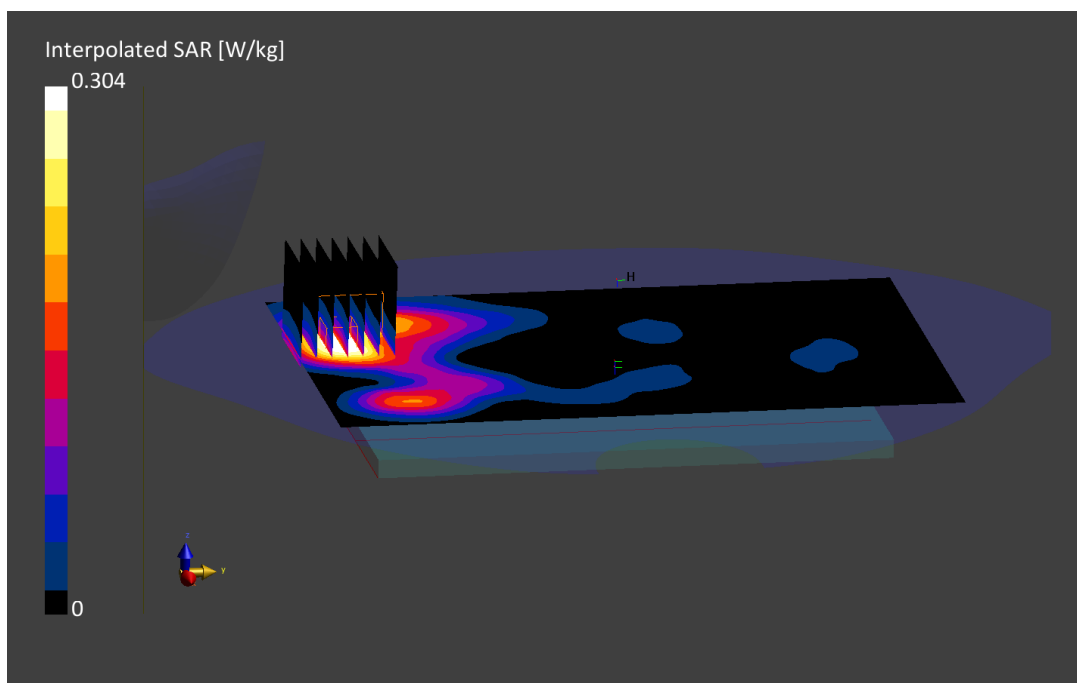
Area Scan (120.0 x 200.0): Measurement grid: dx=10.0mm, dy=10.0mm

Zoom Scan (30.0 x 30.0 x 30.0): Measurement grid: dx=5.0mm, dy=5.0mm, dz=1.5mm; Graded Ratio: 1.5

Reference Value = 0.12 W/kg; Power Drift = 0.19 dB

Peak SAR (extrapolated) = 0.304 W/kg

SAR(1 g) = 0.148 W/kg



PCTEST

DUT: A3LSMF711B1; Type: Portable Handset; Serial: 2616M

Communication System: UID:10494-AAF, LTE-TDD; MAIA: Y; Frequency: 2506.0 MHz

Medium: 2450 Body; Medium parameters used:

$f = 2506.0$ MHz; $\text{cond} = 2.03$ S/m; $\text{perm} = 54.6$; $\text{density} = 1000$ kg/m³

Phantom Section: Flat; Space: 5.00 mm

Test Date: 08/27/2021; Ambient Temp: 23.1°C; Tissue Temp: 23.6°C

Probe: EX3DV4 - SN7539; ConvF:(7.62,7.62,7.62); Calibrated: 2020-10-20

Sensor-Surface: 1.4mm (VMS + 6p)

Electronics: DAE4 Sn1415; Calibrated: 2021-03-10

Phantom: Twin-SAM V8.0; Serial: 1966

Measurement SW: cDASY6 Module SAR V16.0.0.116

**Mode: LTE Band 41 PC3 Closed, Body SAR, Bottom Edge, Low.ch,
20 MHz Bandwidth, QPSK, 50 RB, 25 RB Offset**

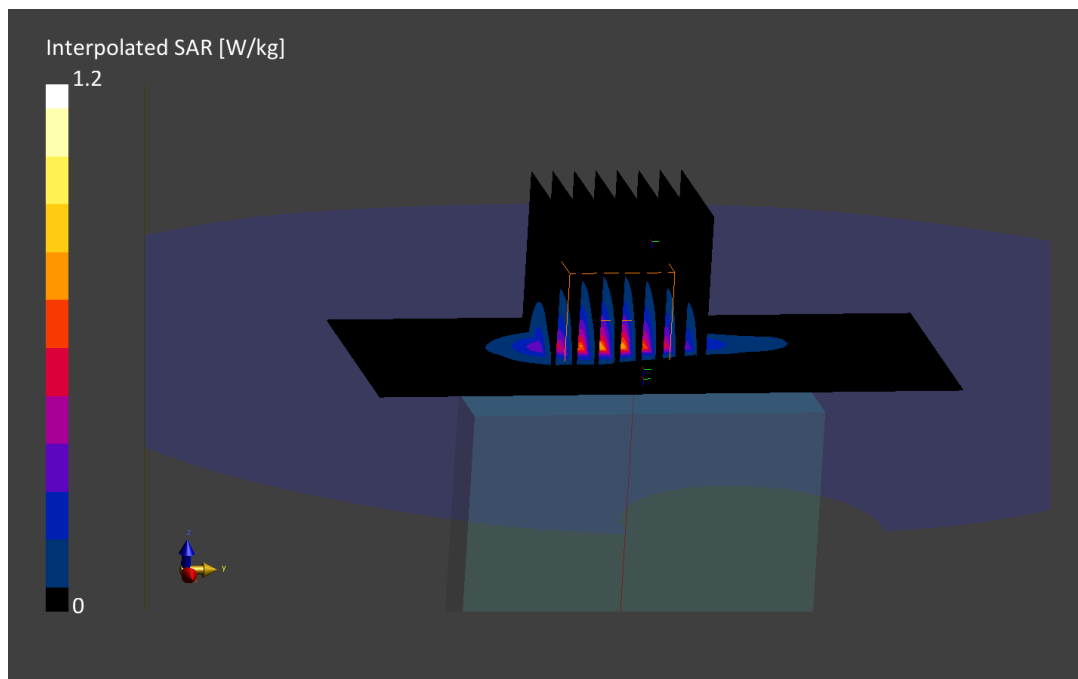
Area Scan (50.0 x 120.0): Measurement grid: $dx=5.0$ mm, $dy=10.0$ mm

Zoom Scan (30.0 x 30.0 x 30.0): Measurement grid: $dx=4.4$ mm, $dy=4.4$ mm, $dz=1.4$ mm; Graded Ratio: 1.4

Reference Value = 0.52 W/kg; Power Drift = -0.15 dB

Peak SAR (extrapolated) = 1.20 W/kg

SAR(1 g) = 0.509 W/kg



PCTEST

DUT: A3LSMF711B1; Type: Portable Handset; Serial: 1272M

Communication System: UID 0, NR Band n5; Frequency: 836.5 MHz; Duty Cycle: 1:1
Medium: 835 Body; Medium parameters used (interpolated):
 $f = 836.5$ MHz; $\sigma = 0.945$ S/m; $\epsilon_r = 53.555$; $\rho = 1000$ kg/m³
Phantom section: Flat Section; Space: 1.5 cm

Test Date: 08/27/2021; Ambient Temp: 23.5°C; Tissue Temp: 22.2°C

Probe: EX3DV4 - SN7409; ConvF(9.66, 9.66, 9.66) @ 836.5 MHz; Calibrated: 6/21/2021
Sensor-Surface: 1.4mm (Mechanical Surface Detection)
Electronics: DAE4 Sn1334; Calibrated: 6/15/2021
Phantom: Twin-SAM V5.0 Front (20); Type: QD 000 P40 CD; Serial: 1759
Measurement SW: DASY52, Version 52.10 (4);SEMCAD X Version 14.6.14 (7483)

**Mode: NR Band n5 Closed, Body SAR, Back Side, 20 MHz Bandwidth,
DFT-s-OFDM QPSK, Ch. 167300, 1 RB, 53 RB Offset**

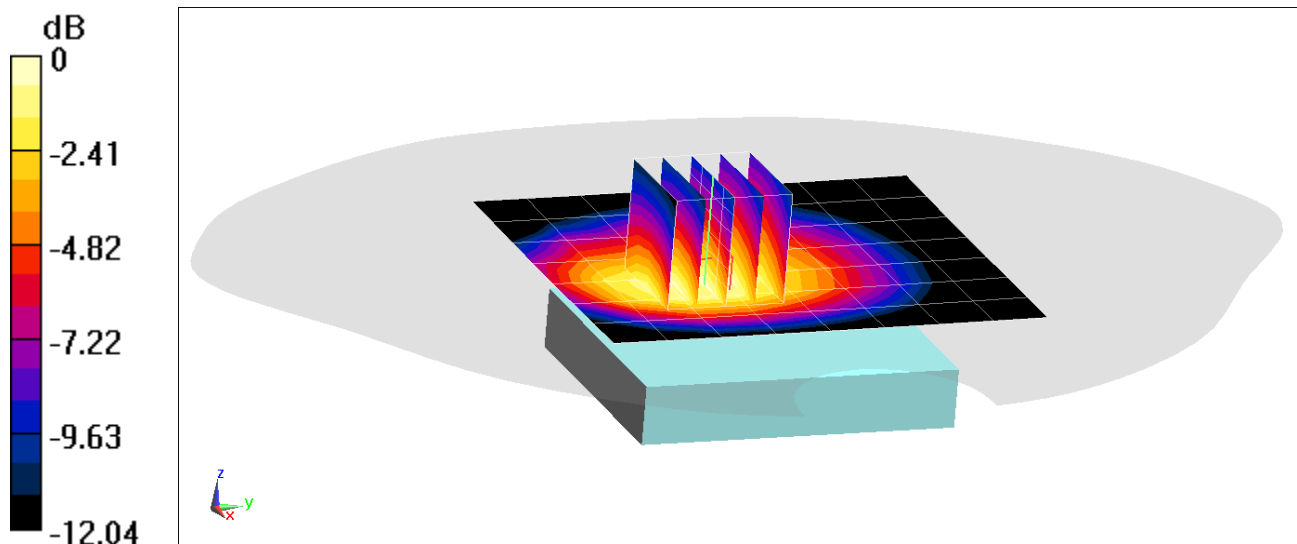
Area Scan (8x9x1): Measurement grid: dx=15mm, dy=15mm

Zoom Scan (5x5x7)/Cube 0: Measurement grid: dx=8mm, dy=8mm, dz=5mm

Reference Value = 17.71 V/m; Power Drift = 0.08 dB

Peak SAR (extrapolated) = 0.437 W/kg

SAR(1 g) = 0.284 W/kg



0 dB = 0.379 W/kg = -4.21 dBW/kg

PCTEST

DUT: A3LSMF711B1; Type: Portable Handset; Serial: 1272M

Communication System: UID 0, NR Band n5; Frequency: 836.5 MHz; Duty Cycle: 1:1
Medium: 835 Body; Medium parameters used (interpolated):
 $f = 836.5$ MHz; $\sigma = 0.945$ S/m; $\epsilon_r = 53.555$; $\rho = 1000$ kg/m³
Phantom section: Flat Section; Space: 0.5 cm

Test Date: 08/27/2021; Ambient Temp: 23.5°C; Tissue Temp: 22.2°C

Probe: EX3DV4 - SN7409; ConvF(9.66, 9.66, 9.66) @ 836.5 MHz; Calibrated: 6/21/2021
Sensor-Surface: 1.4mm (Mechanical Surface Detection)
Electronics: DAE4 Sn1334; Calibrated: 6/15/2021
Phantom: Twin-SAM V5.0 Front (20); Type: QD 000 P40 CD; Serial: 1759
Measurement SW: DASY52, Version 52.10 (4);SEMCAD X Version 14.6.14 (7483)

**Mode: NR Band n5 Closed, Body SAR, Back Side, 20 MHz Bandwidth,
DFT-s-OFDM QPSK, Ch. 167300, 50 RB, 28 RB Offset**

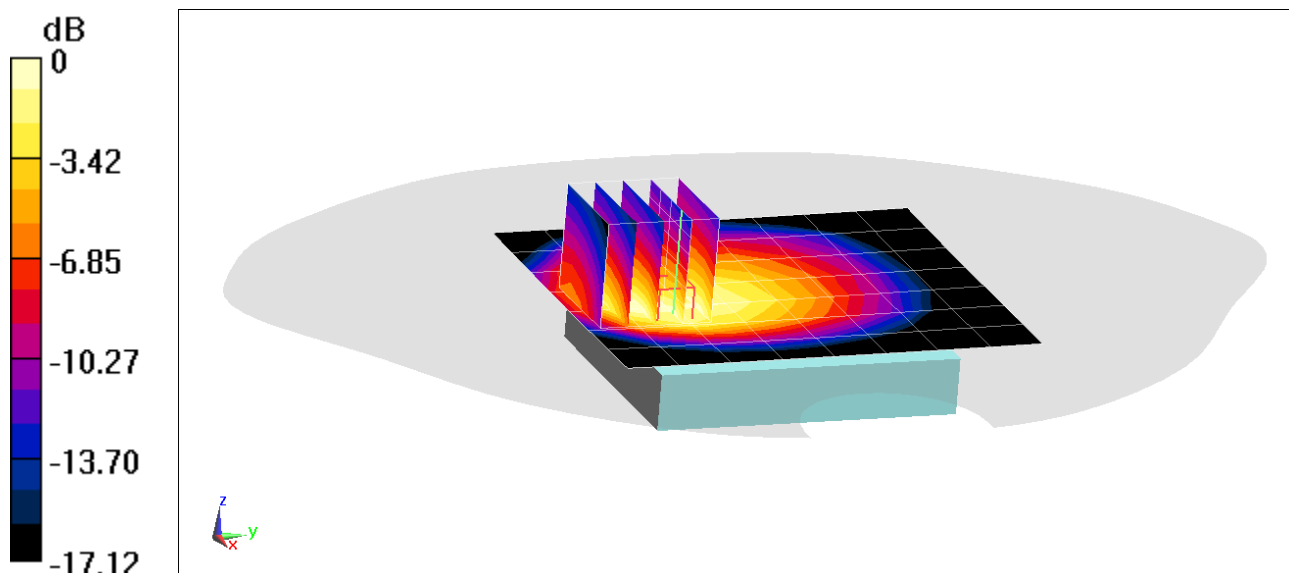
Area Scan (8x9x1): Measurement grid: dx=15mm, dy=15mm

Zoom Scan (5x5x7)/Cube 0: Measurement grid: dx=8mm, dy=8mm, dz=5mm

Reference Value = 23.77 V/m; Power Drift = -0.11 dB

Peak SAR (extrapolated) = 1.12 W/kg

SAR(1 g) = 0.548 W/kg



0 dB = 0.850 W/kg = -0.71 dBW/kg

PCTEST

DUT: A3LSMF711B1; Type: Portable Handset; Serial: 2635M

Communication System: UID 0, NR Band n66; Frequency: 1770 MHz; Duty Cycle: 1:1
Medium: 1750 Body; Medium parameters used:
 $f = 1770 \text{ MHz}$; $\sigma = 1.51 \text{ S/m}$; $\epsilon_r = 51.25$; $\rho = 1000 \text{ kg/m}^3$
Phantom section: Flat Section; Space: 1.5 cm

Test Date: 08/27/2021; Ambient Temp: 22.0°C; Tissue Temp: 22.4°C

Probe: EX3DV4 - SN7357; ConvF(8.12, 8.12, 8.12) @ 1770 MHz; Calibrated: 4/19/2021
Sensor-Surface: 1.4mm (Mechanical Surface Detection)
Electronics: DAE4 Sn1407; Calibrated: 4/7/2021
Phantom: Twin-SAM V5.0 Front (20); Type: QD 000 P40 CD; Serial: 1686
Measurement SW: DASY52, Version 52.10 (4);SEMCAD X Version 14.6.14 (7483)

**Mode: NR Band n66 Open, Body SAR, Back Side, 20 MHz Bandwidth,
DFT-s-OFDM QPSK, Ch. 354000, 1 RB, 53 RB Offset**

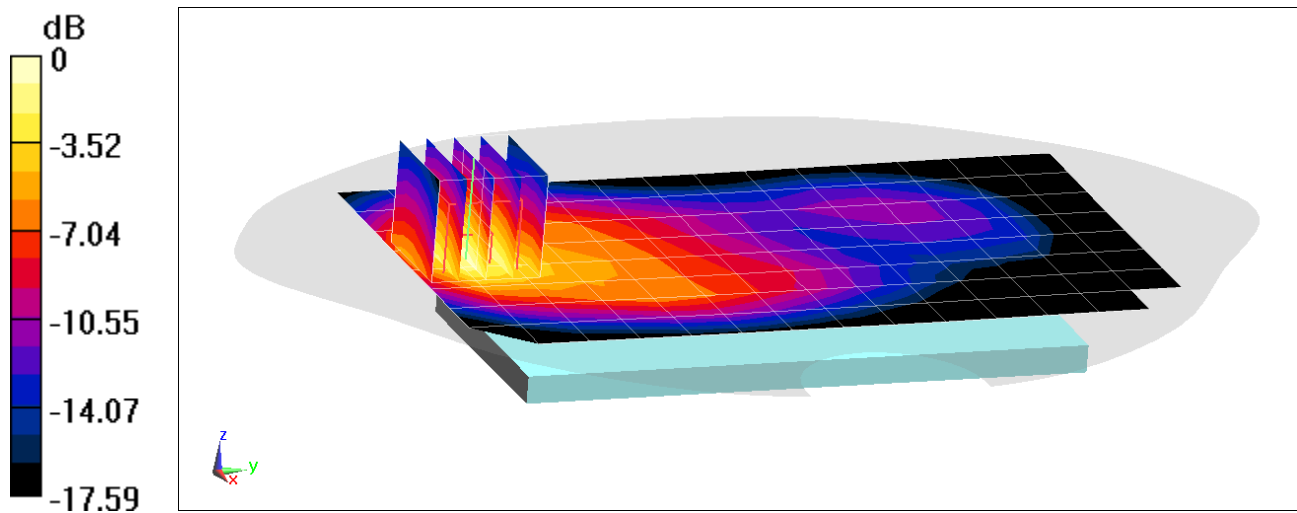
Area Scan (9x15x1): Measurement grid: dx=15mm, dy=15mm

Zoom Scan (5x5x7)/Cube 0: Measurement grid: dx=8mm, dy=8mm, dz=5mm

Reference Value = 21.32 V/m; Power Drift = 0.04 dB

Peak SAR (extrapolated) = 1.03 W/kg

SAR(1 g) = 0.625 W/kg



0 dB = 0.882 W/kg = -0.55 dBW/kg

PCTEST

DUT: A3LSMF711B1; Type: Portable Handset; Serial: 2635M

Communication System: UID 0, NR Band n66; Frequency: 1720 MHz; Duty Cycle: 1:1
Medium: 1750 Body; Medium parameters used:
 $f = 1720 \text{ MHz}$; $\sigma = 1.494 \text{ S/m}$; $\epsilon_r = 52.122$; $\rho = 1000 \text{ kg/m}^3$
Phantom section: Flat Section; Space: 0.5 cm

Test Date: 09/05/2021; Ambient Temp: 21.7°C; Tissue Temp: 21.4°C

Probe: EX3DV4 - SN7357; ConvF(8.12, 8.12, 8.12) @ 1720 MHz; Calibrated: 4/19/2021
Sensor-Surface: 1.4mm (Mechanical Surface Detection)
Electronics: DAE4 Sn1407; Calibrated: 4/7/2021
Phantom: Twin-SAM V5.0 Front (20); Type: QD 000 P40 CD; Serial: 1686
Measurement SW: DASY52, Version 52.10 (4);SEMCAD X Version 14.6.14 (7483)

**Mode: NR Band n66 Closed, Body SAR, Bottom Edge, 20 MHz Bandwidth,
CP-OFDM QPSK, Ch. 344000, 1 RB, 1 RB Offset**

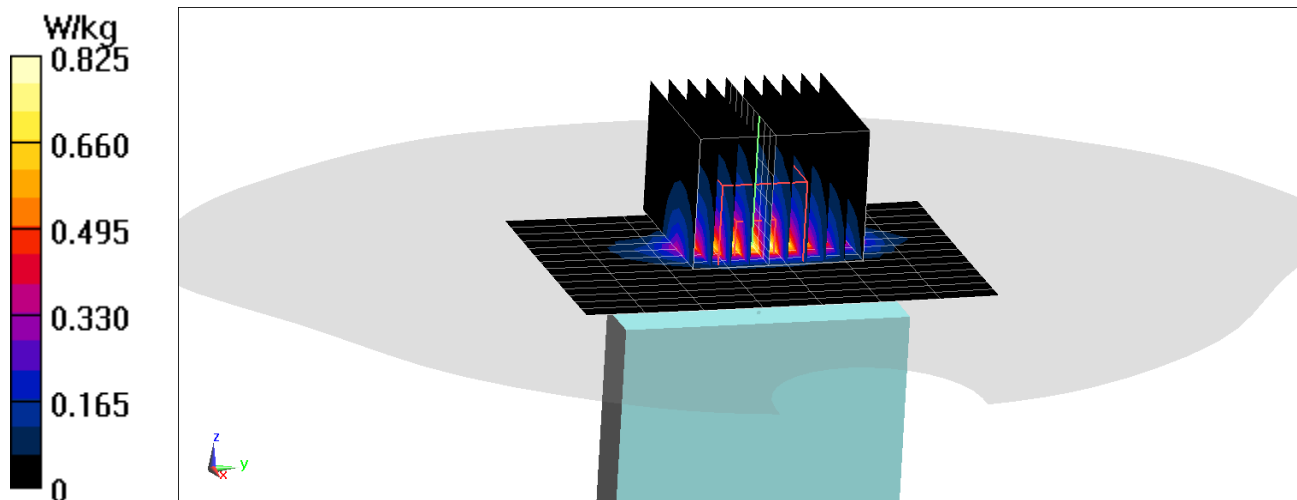
Area Scan (15x8x1): Measurement grid: $dx=5\text{mm}$, $dy=15\text{mm}$

Zoom Scan (10x10x8)/Cube 0: Measurement grid: $dx=4.8\text{mm}$, $dy=4.8\text{mm}$, $dz=1.4\text{mm}$; Graded Ratio: 1.4

Reference Value = 20.32 V/m; Power Drift = -0.13 dB

Peak SAR (extrapolated) = 1.06 W/kg

SAR(1 g) = 0.515 W/kg



PCTEST

DUT: A3LSMF711B1; Type: Portable Handset; Serial: 1262M

Communication System: UID:10315-AAB, WLAN; MAIA: Y; Frequency: 2437.0 MHz

Medium: 2450 Body; Medium parameters used:

f = 2437.0 MHz; cond = 2.01 S/m; perm = 51.4; density = 1000 kg/m³

Phantom Section: Flat; Space: 15.00 mm

Test Date: 08/19/2021; Ambient Temp: 21.5°C; Tissue Temp: 22.9°C

Probe: EX3DV4 - SN7526; ConvF:(7.24,7.24,7.24); Calibrated: 2021-03-16

Sensor-Surface: 1.4mm (VMS + 6p)

Electronics: DAE4 Sn1272; Calibrated: 2021-03-18

Phantom: Twin-SAM V5.0; Serial: 1758

Measurement SW: cDASY6 Module SAR V16.0.0.116

**Mode: IEEE 802.11b Open, 22 MHz Bandwidth, MIMO,
Body SAR, Back side, Ch. 6, 1 Mbps**

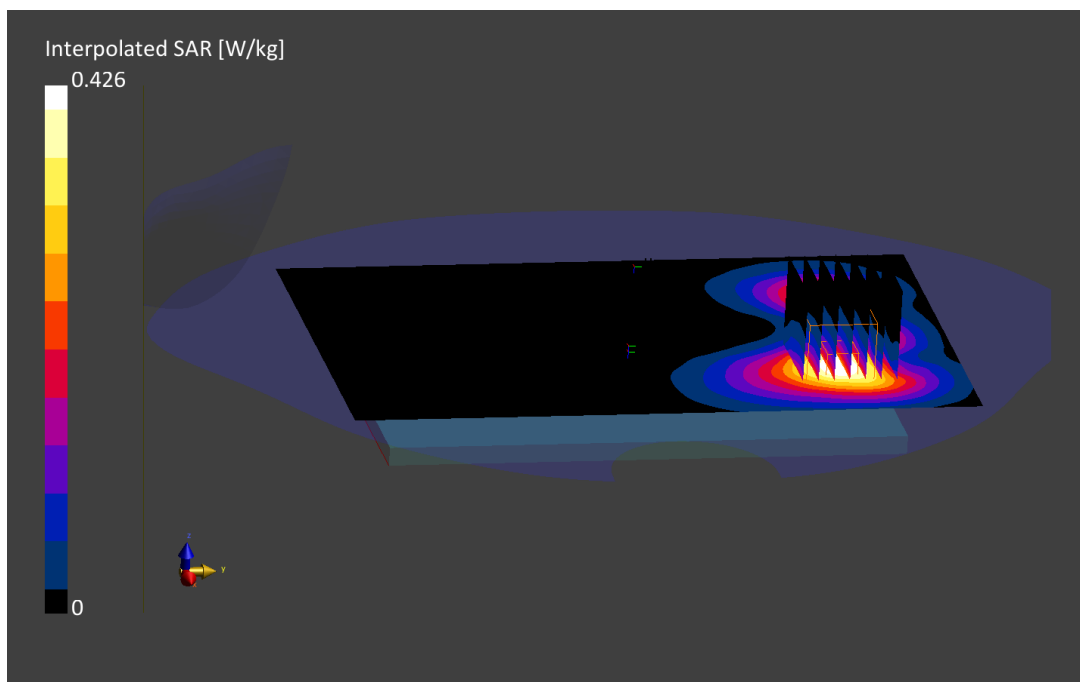
Area Scan (120.0 x 200.0): Measurement grid: dx=10.0mm, dy=10.0mm

Zoom Scan (30.0 x 30.0 x 30.0): Measurement grid: dx=5.0mm, dy=5.0mm, dz=1.5mm; Graded Ratio: 1.5

Reference Value = 0.19 W/kg; Power Drift = 0.11 dB

Peak SAR (extrapolated) = 0.427 W/kg

SAR(1 g) = 0.223 W/kg



PCTEST

DUT: A3LSMF711B1; Type: Portable Handset; Serial: 1274M

Communication System: UID:10415-AAA, WLAN; MAIA: Y; Frequency: 2462.0 MHz

Medium: 2450 Body; Medium parameters used:

f = 2462.0 MHz; cond = 2.03 S/m; perm = 51.3; density = 1000 kg/m³

Phantom Section: Flat; Space: 5.00 mm

Test Date: 08/19/2021; Ambient Temp: 21.5°C; Tissue Temp: 22.9°C

Probe: EX3DV4 - SN7526; ConvF:(7.24,7.24,7.24); Calibrated: 2021-03-16

Sensor-Surface: 1.4mm (VMS + 6p)

Electronics: DAE4 Sn1272; Calibrated: 2021-03-18

Phantom: Twin-SAM V5.0; Serial: 1758

Measurement SW: cDASY6 Module SAR V16.0.0.116

**Mode: IEEE 802.11b Closed, 22 MHz Bandwidth, MIMO,
Body SAR, Left Edge, Ch. 11, 1 Mbps**

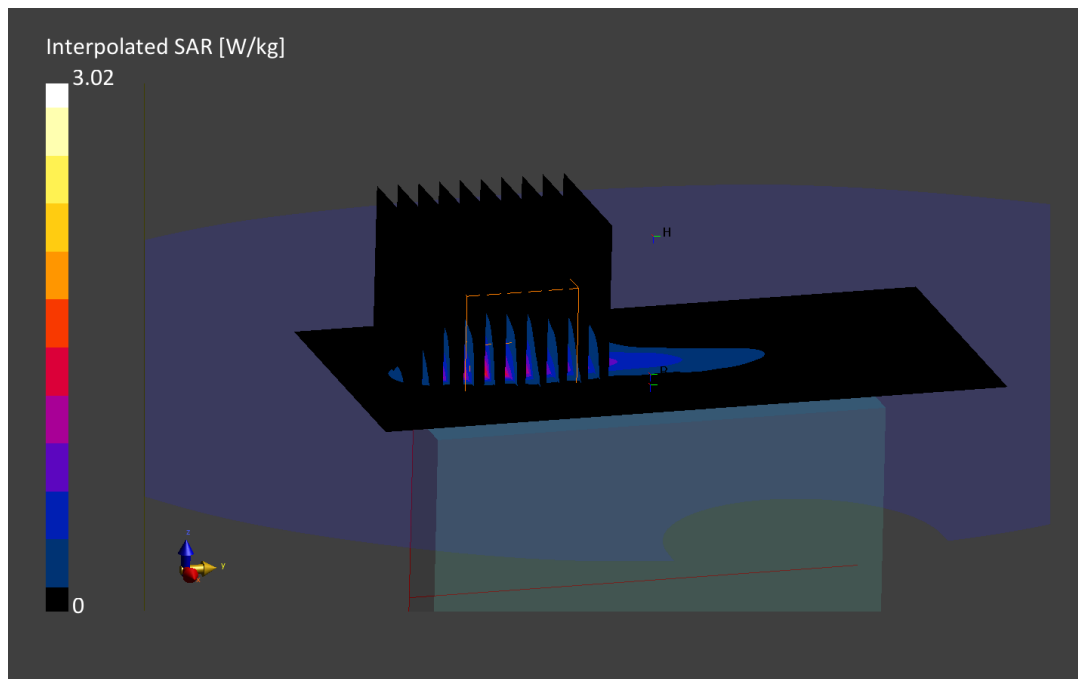
Area Scan (60.0 x 120.0): Measurement grid: dx=10.0mm, dy=10.0mm

Zoom Scan (30.0 x 30.0 x 30.0): Measurement grid: dx=4.0mm, dy=4.0mm, dz=1.4mm; Graded Ratio: 1.4

Reference Value = 1.01 W/kg; Power Drift = -0.06 dB

Peak SAR (extrapolated) = 3.02 W/kg

SAR(1 g) = 1.08 W/kg



PCTEST

DUT: A3LSMF711B1; Type: Portable Handset; Serial: 1274M

Communication System: UID:10196-AAC, WLAN; MAIA: Y; Frequency: 5785.0 MHz

Medium: 5200-5800 Body; Medium parameters used:

f = 5785.0 MHz; cond = 6.13 S/m; perm = 47.0; density = 1000 kg/m³

Phantom Section: Flat; Space: 15.00 mm

Test Date: 08/14/2021; Ambient Temp: 21.1°C; Tissue Temp: 22.5°C

Probe: EX3DV4 - SN7526; ConvF:(4.18,4.18,4.18); Calibrated: 2021-03-16

Sensor-Surface: 1.4mm (VMS + 6p)

Electronics: DAE4 Sn1272; Calibrated: 2021-03-18

Phantom: Twin-SAM V5.0; Serial: 1758

Measurement SW: cDASY6 Module SAR V16.0.0.116

**Mode: IEEE 802.11n Open, 20 MHz Bandwidth, UNII-3, MIMO,
Ch. 157, Body SAR, Back side, 13 Mbps**

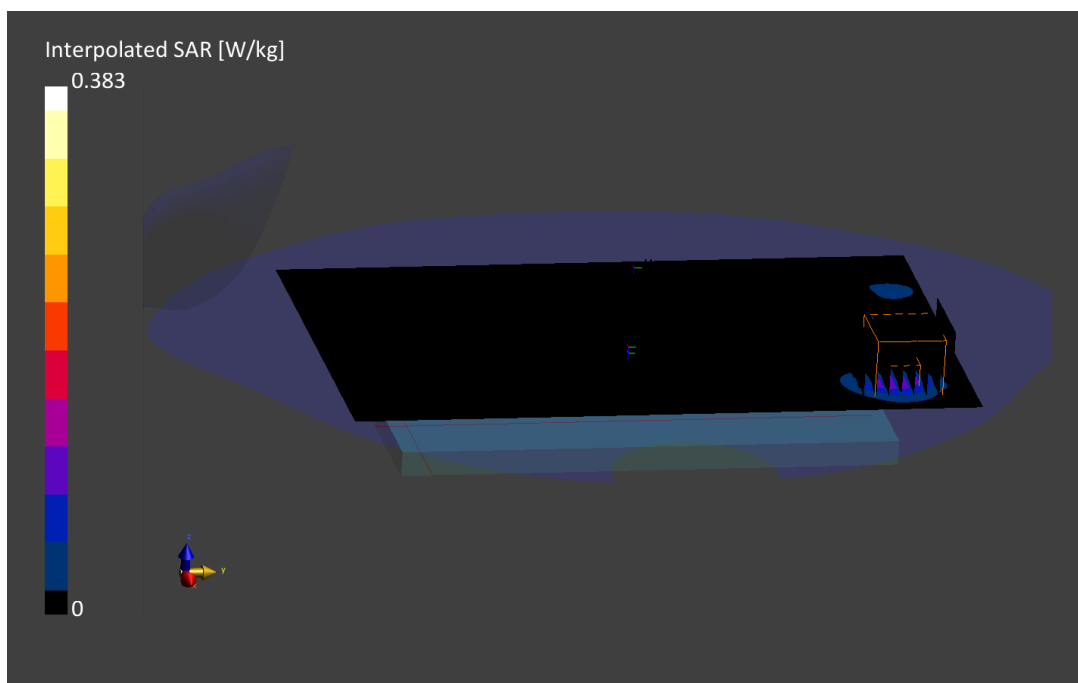
Area Scan (120.0 x 200.0): Measurement grid: dx=10.0mm, dy=10.0mm

Zoom Scan (22.0 x 22.0 x 22.0): Measurement grid: dx=4.0mm, dy=4.0mm, dz=1.4mm; Graded Ratio: 1.4

Reference Value = 0.04 W/kg; Power Drift = -0.14 dB

Peak SAR (extrapolated) = 0.383 W/kg

SAR(1 g) = 0.080 W/kg



PCTEST

DUT: A3LSMF711B1; Type: Portable Handset; Serial: 1262M

Communication System: UID:10196-CAD, WLAN; MAIA: Y; Frequency: 5785.0 MHz

Medium: 5200-5800 Body; Medium parameters used:

f = 5785.0 MHz; cond = 6.13 S/m; perm = 47.0; density = 1000 kg/m³

Phantom Section: Flat; Space: 5.00 mm

Test Date: 08/14/2021; Ambient Temp: 21.1°C; Tissue Temp: 22.5°C

Probe: EX3DV4 - SN7526; ConvF:(4.18,4.18,4.18); Calibrated: 2021-03-16

Sensor-Surface: 1.4mm (VMS + 6p)

Electronics: DAE4 Sn1272; Calibrated: 2021-03-18

Phantom: Twin-SAM V5.0; Serial: 1758

Measurement SW: cDASY6 Module SAR V16.0.0.116

**Mode: IEEE 802.11n Closed, 20 MHz Bandwidth, UNII-3, MIMO,
Ch. 157, Body SAR, Front side, 13 Mbps**

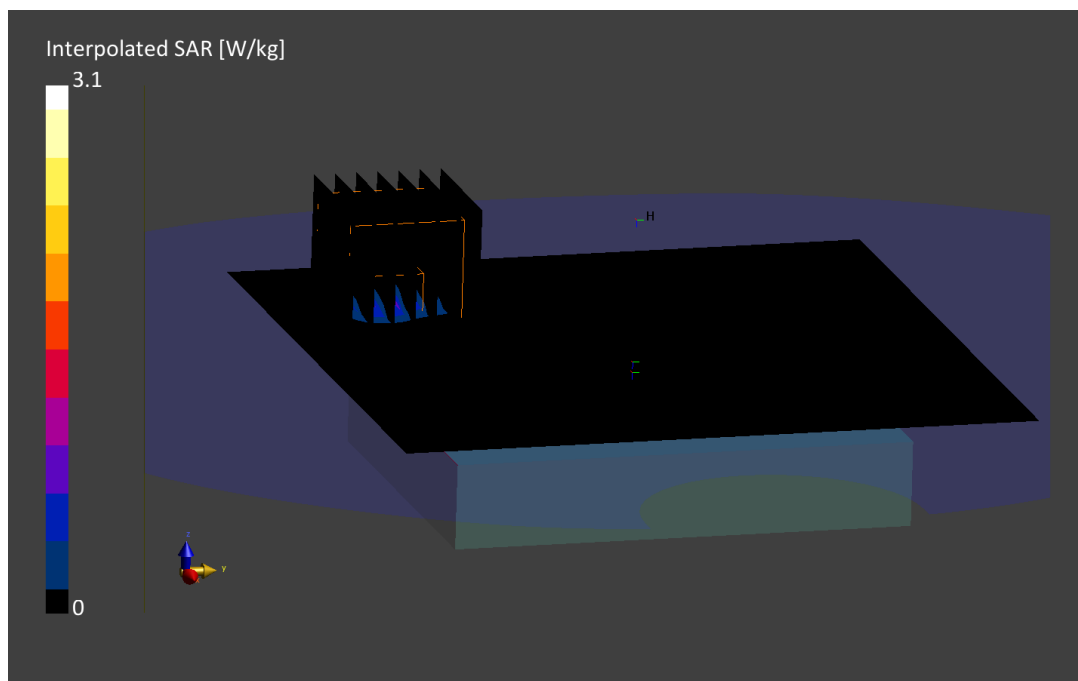
Area Scan (120.0 x 120.0): Measurement grid: dx=10.0mm, dy=10.0mm

Zoom Scan (22.0 x 22.0 x 22.0): Measurement grid: dx=4.0mm, dy=4.0mm, dz=1.4mm; Graded Ratio: 1.4

Reference Value = 0.34 W/kg; Power Drift = -0.01 dB

Peak SAR (extrapolated) = 3.11 W/kg

SAR(1 g) = 0.653 W/kg



PCTEST

DUT: A3LSMF711B1; Type: Portable Handset; Serial: 1262M

Communication System: UID:10032-CAA, Bluetooth; MAIA: Y; Frequency: 2441.0 MHz

Medium: 2450 Body; Medium parameters used:

f = 2441.0 MHz; cond = 2.02 S/m; perm = 51.3; density = 1000 kg/m³

Phantom Section: Flat; Space: 15.00 mm

Test Date: 08/19/2021; Ambient Temp: 21.5°C; Tissue Temp: 22.9°C

Probe: EX3DV4 - SN7526; ConvF:(7.24,7.24,7.24); Calibrated: 2021-03-16

Sensor-Surface: 1.4mm (VMS + 6p)

Electronics: DAE4 Sn1272; Calibrated: 2021-03-18

Phantom: Twin-SAM V5.0; Serial: 1758

Measurement SW: cDASY6 Module SAR V16.0.0.116

Mode: Bluetooth Open, Antenna 1, Body SAR, Ch. 39, 1 Mbps, Back Side

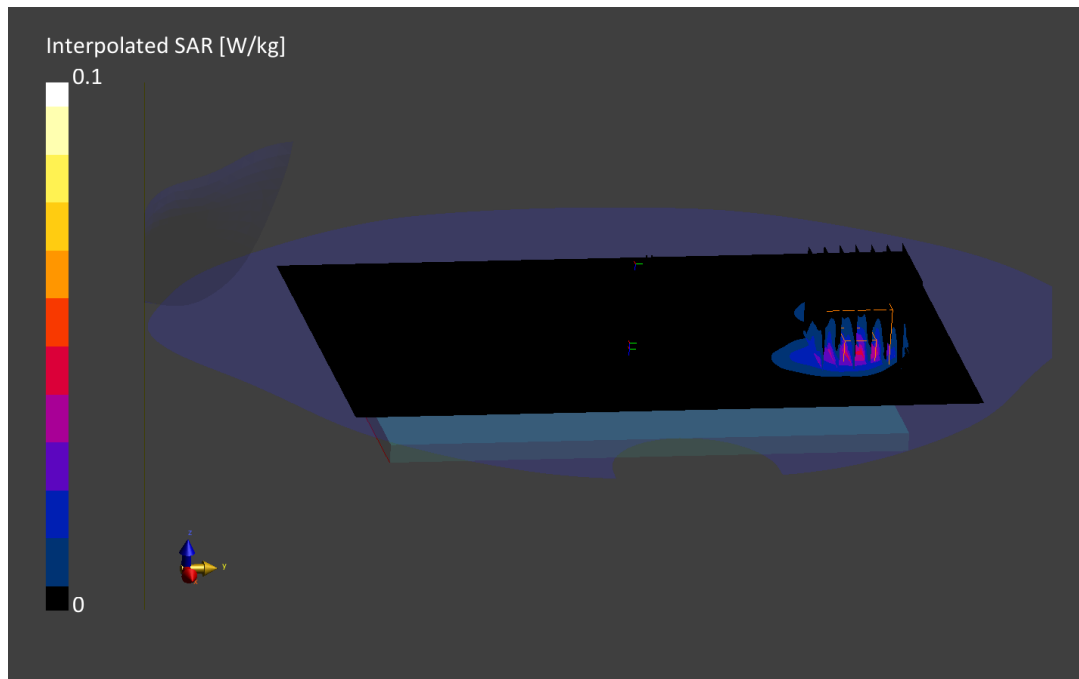
Area Scan (120.0 x 200.0): Measurement grid: dx=10.0mm, dy=10.0mm

Zoom Scan (30.0 x 30.0 x 30.0): Measurement grid: dx=5.0mm, dy=5.0mm, dz=1.5mm; Graded Ratio: 1.5

Reference Value = 0.02 W/kg; Power Drift = -0.14 dB

Peak SAR (extrapolated) = 0.085 W/kg

SAR(1 g) = 0.036 W/kg



PCTEST

DUT: A3LSMF711B1; Type: Portable Handset; Serial: 1262M

Communication System: UID:10032-CAA, Bluetooth; MAIA: Y; Frequency: 2441.0 MHz

Medium: 2450 Body; Medium parameters used:

f = 2441.0 MHz; cond = 2.00 S/m; perm = 51.0; density = 1000 kg/m³

Phantom Section: Flat; Space: 5.00 mm

Test Date: 08/22/2021; Ambient Temp: 21.5°C; Tissue Temp: 21.8°C

Probe: EX3DV4 - SN7526; ConvF:(7.24,7.24,7.24); Calibrated: 2021-03-16

Sensor-Surface: 1.4mm (VMS + 6p)

Electronics: DAE4 Sn1272; Calibrated: 2021-03-18

Phantom: Twin-SAM V5.0; Serial: 1758

Measurement SW: cDASY6 Module SAR V16.0.0.116

Mode: Bluetooth Closed, Antenna 1, Body SAR, Ch. 39, 1 Mbps, Front Side

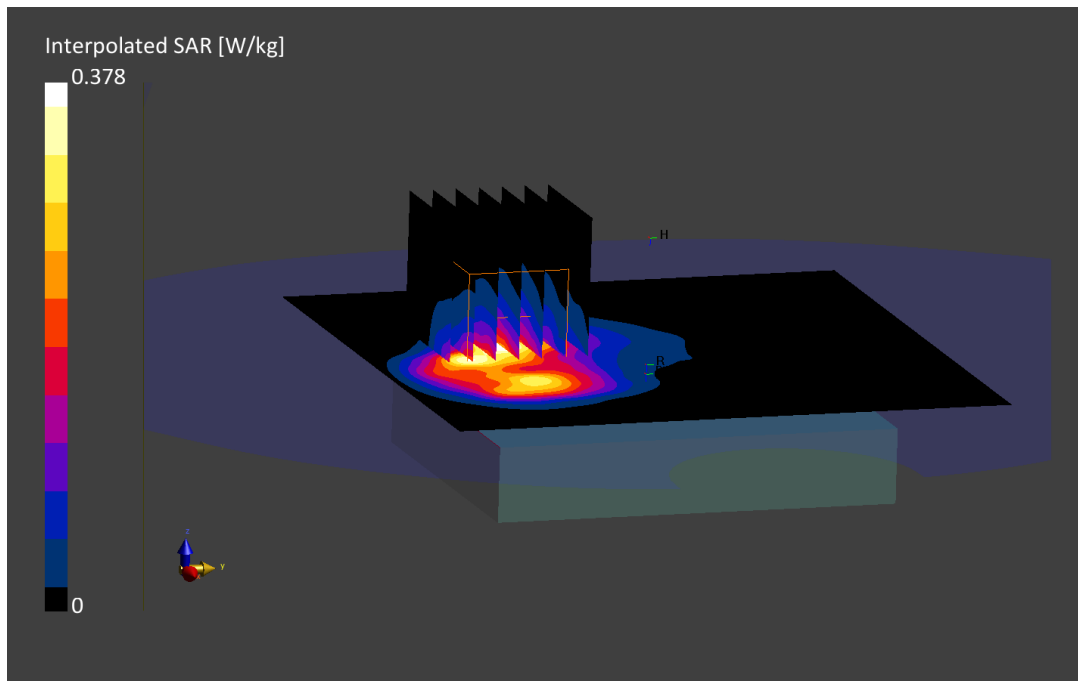
Area Scan (120.0 x 120.0): Measurement grid: dx=10.0mm, dy=10.0mm

Zoom Scan (30.0 x 30.0 x 30.0): Measurement grid: dx=5.0mm, dy=5.0mm, dz=1.5mm; Graded Ratio: 1.5

Reference Value = 0.17 W/kg; Power Drift = -0.19 dB

Peak SAR (extrapolated) = 0.367 W/kg

SAR(1 g) = 0.182 W/kg



PCTEST

DUT: A3LSMF711B1; Type: Portable Handset; Serial: 1629M

Communication System: UID 0, GSM GPRS; 3 Tx slots; Frequency: 1909.8 MHz; Duty Cycle: 1:2.76

Medium: 1900 Body; Medium parameters used:

$f = 1910$ MHz; $\sigma = 1.563$ S/m; $\epsilon_r = 51.667$; $\rho = 1000$ kg/m³

Phantom section: Flat Section; Space: 0.0 cm

Test Date: 09/01/2021; Ambient Temp: 24.6°C; Tissue Temp: 23.3°C

Probe: EX3DV4 - SN7409; ConvF(7.68, 7.68, 7.68) @ 1909.8 MHz; Calibrated: 6/21/2021

Sensor-Surface: 1.4mm (Mechanical Surface Detection)

Electronics: DAE4 Sn1334; Calibrated: 6/15/2021

Phantom: Twin-SAM V5.0 Front (20); Type: QD 000 P40 CD; Serial: 1759

Measurement SW: DASY52, Version 52.10 (4);SEMCAD X Version 14.6.14 (7483)

Mode: GPRS 1900, Phablet SAR, Back side, High.ch, 3 Tx Slots

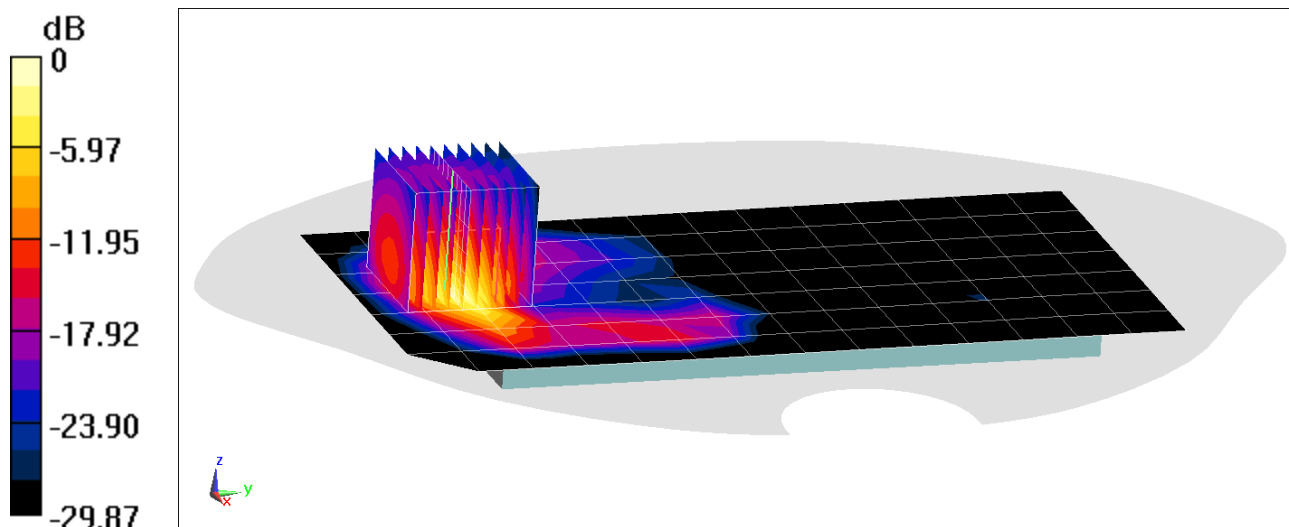
Area Scan (8x15x1): Measurement grid: dx=15mm, dy=15mm

Zoom Scan (10x10x8)/Cube 0: Measurement grid: dx=3.8mm, dy=3.8mm, dz=1.4mm; Graded Ratio: 1.4

Reference Value = 57.51 V/m; Power Drift = 0.03 dB

Peak SAR (extrapolated) = 13.2 W/kg

SAR(10 g) = 1.69 W/kg



0 dB = 8.41 W/kg = 9.25 dBW/kg

PCTEST

DUT: A3LSMF711B1; Type: Portable Handset; Serial: 2635M

Communication System: UID 0, UMTS; Frequency: 1712.4 MHz; Duty Cycle: 1:1
Medium: 1750 Body; Medium parameters used (interpolated):
 $f = 1712.4$ MHz; $\sigma = 1.484$ S/m; $\epsilon_r = 51.26$; $\rho = 1000$ kg/m³
Phantom section: Flat Section; Space: 0.0 cm

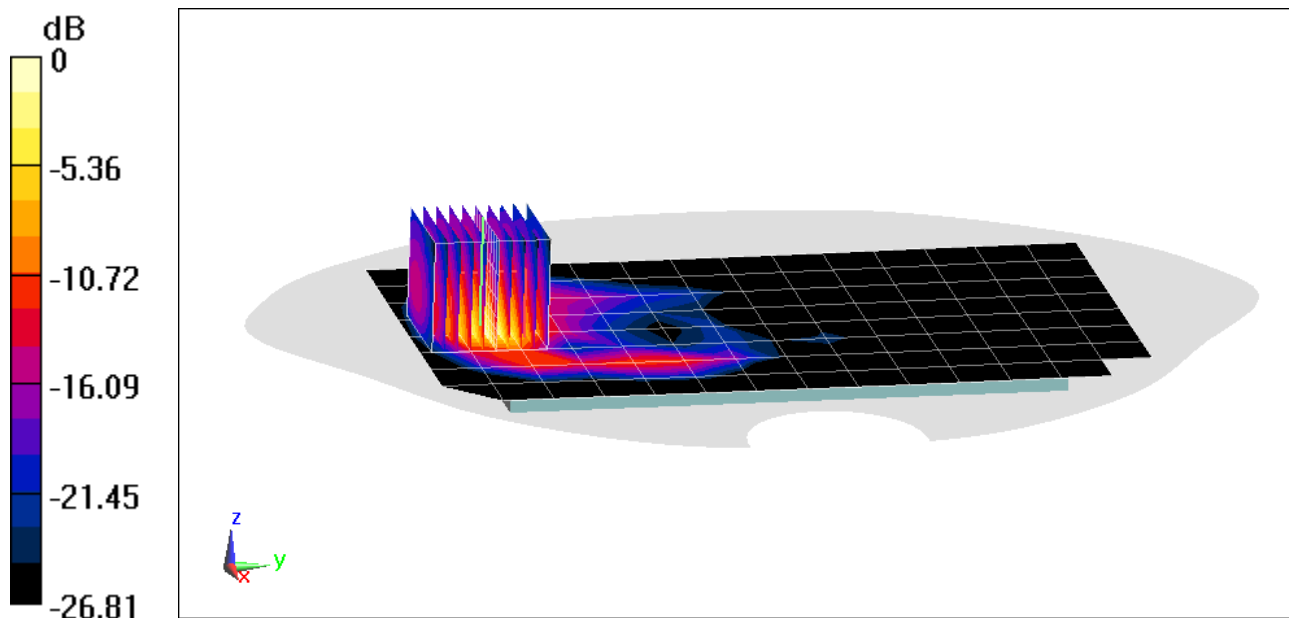
Test Date: 08/29/2021; Ambient Temp: 22.6°C; Tissue Temp: 20.9°C

Probe: EX3DV4 - SN7357; ConvF(8.12, 8.12, 8.12) @ 1712.4 MHz; Calibrated: 4/19/2021
Sensor-Surface: 1.4mm (Mechanical Surface Detection)
Electronics: DAE4 Sn1407; Calibrated: 4/7/2021
Phantom: Twin-SAM V5.0 Front (20); Type: QD 000 P40 CD; Serial: 1686
Measurement SW: DASY52, Version 52.10 (4);SEMCAD X Version 14.6.14 (7483)

Mode: UMTS 1750, Phablet SAR, Back side, Low.ch

Area Scan (9x15x1): Measurement grid: dx=15mm, dy=15mm

Zoom Scan (10x10x8)/Cube 0: Measurement grid: dx=3.8mm, dy=3.8mm, dz=1.4mm; Graded Ratio: 1.4
Reference Value = 64.75 V/m; Power Drift = -0.02 dB
Peak SAR (extrapolated) = 14.2 W/kg
SAR(10 g) = 2.16 W/kg



0 dB = 9.59 W/kg = 9.82 dBW/kg

PCTEST

DUT: A3LSMF711B1; Type: Portable Handset; Serial: 2616M

Communication System: UID 0, UMTS; Frequency: 1907.6 MHz; Duty Cycle: 1:1
Medium: 1900 Body; Medium parameters used (interpolated):
 $f = 1907.6$ MHz; $\sigma = 1.525$ S/m; $\epsilon_r = 51.651$; $\rho = 1000$ kg/m³
Phantom section: Flat Section; Space: 0.0 cm

Test Date: 09/03/2021; Ambient Temp: 24.0 C; Tissue Temp: 23.5°C

Probe: EX3DV4 - SN7409; ConvF(7.68, 7.68, 7.68) @ 1907.6 MHz; Calibrated: 6/21/2021
Sensor-Surface: 1.4mm (Mechanical Surface Detection)
Electronics: DAE4 Sn1334; Calibrated: 6/15/2021
Phantom: Twin-SAM V5.0 Front (20); Type: QD 000 P40 CD; Serial: 1759
Measurement SW: DASY52, Version 52.10 (4);SEMCAD X Version 14.6.14 (7483)

Mode: UMTS 1900, Phablet SAR, Back side, High.ch

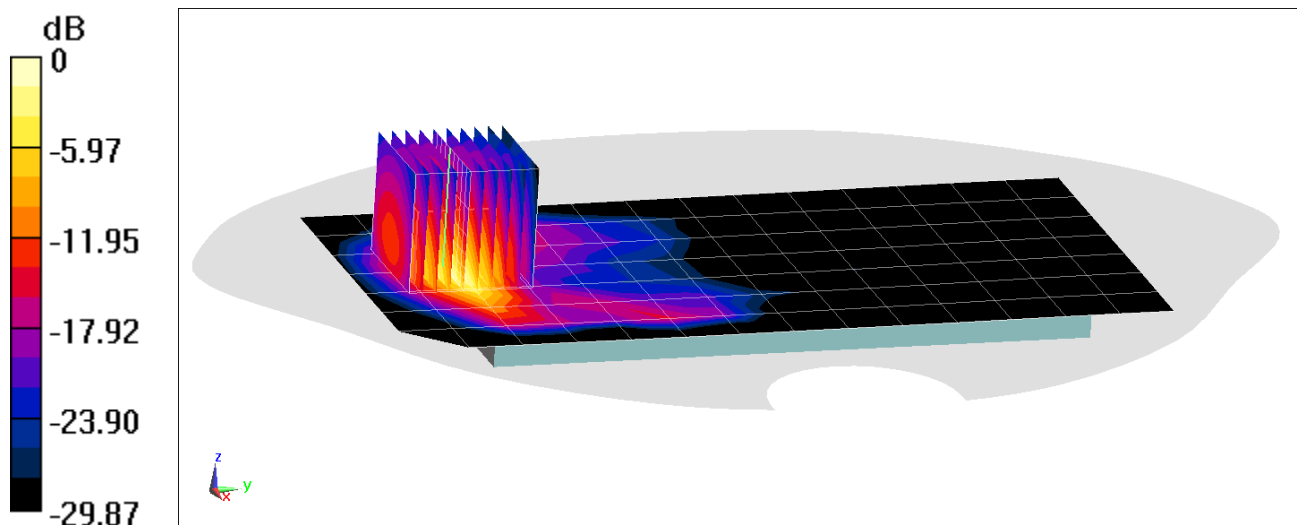
Area Scan (8x15x1): Measurement grid: dx=15mm, dy=15mm

Zoom Scan (10x10x8)/Cube 0: Measurement grid: dx=3.8mm, dy=3.8mm, dz=1.4mm; Graded Ratio: 1.4

Reference Value = 71.11 V/m; Power Drift = 0.10 dB

Peak SAR (extrapolated) = 20.1 W/kg

SAR(10 g) = 2.6 W/kg



0 dB = 13.0 W/kg = 11.14 dBW/kg

PCTEST

DUT: A3LSMF711B1; Type: Portable Handset; Serial: 2635M

Communication System: UID 0, LTE Band 66 (AWS); Frequency: 1720 MHz; Duty Cycle: 1:1

Medium: 1750 Body; Medium parameters used:

$f = 1720 \text{ MHz}$; $\sigma = 1.51 \text{ S/m}$; $\epsilon_r = 51.584$; $\rho = 1000 \text{ kg/m}^3$

Phantom section: Flat Section; Space: 0.0 cm

Test Date: 09/07/2021; Ambient Temp: 23.3°C; Tissue Temp: 21.4°C

Probe: EX3DV4 - SN7357; ConvF(8.12, 8.12, 8.12) @ 1720 MHz; Calibrated: 4/19/2021

Sensor-Surface: 1.4mm (Mechanical Surface Detection)

Electronics: DAE4 Sn1407; Calibrated: 4/7/2021

Phantom: Twin-SAM V5.0 Front (20); Type: QD 000 P40 CD; Serial: 1686

Measurement SW: DASY52, Version 52.10 (4);SEMCAD X Version 14.6.14 (7483)

**Mode: LTE Band 66 (AWS), Phablet SAR, Back side, Low.ch,
20 MHz Bandwidth, QPSK, 1 RB, 50 RB Offset**

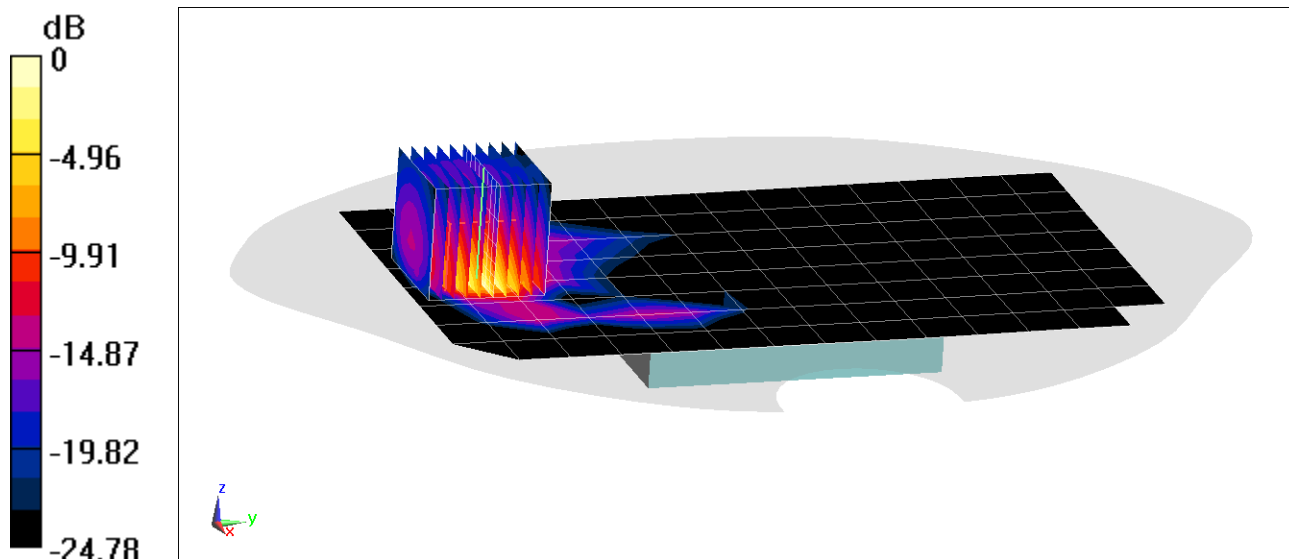
Area Scan (9x15x1): Measurement grid: $dx=15\text{mm}$, $dy=15\text{mm}$

Zoom Scan (10x10x8)/Cube 0: Measurement grid: $dx=3.8\text{mm}$, $dy=3.8\text{mm}$, $dz=1.4\text{mm}$; Graded Ratio: 1.4

Reference Value = 59.90 V/m; Power Drift = 0.02 dB

Peak SAR (extrapolated) = 12.9 W/kg

SAR(10 g) = 1.99 W/kg



0 dB = 9.08 W/kg = 9.58 dBW/kg

PCTEST

DUT: A3LSMF711B1; Type: Portable Handset; Serial: 1262M

Communication System: UID 0, LTE Band 25 (PCS); Frequency: 1860 MHz; Duty Cycle: 1:1
Medium: 1900 Body; Medium parameters used:
 $f = 1860 \text{ MHz}$; $\sigma = 1.53 \text{ S/m}$; $\epsilon_r = 50.811$; $\rho = 1000 \text{ kg/m}^3$
Phantom section: Flat Section; Space: 0.0 cm

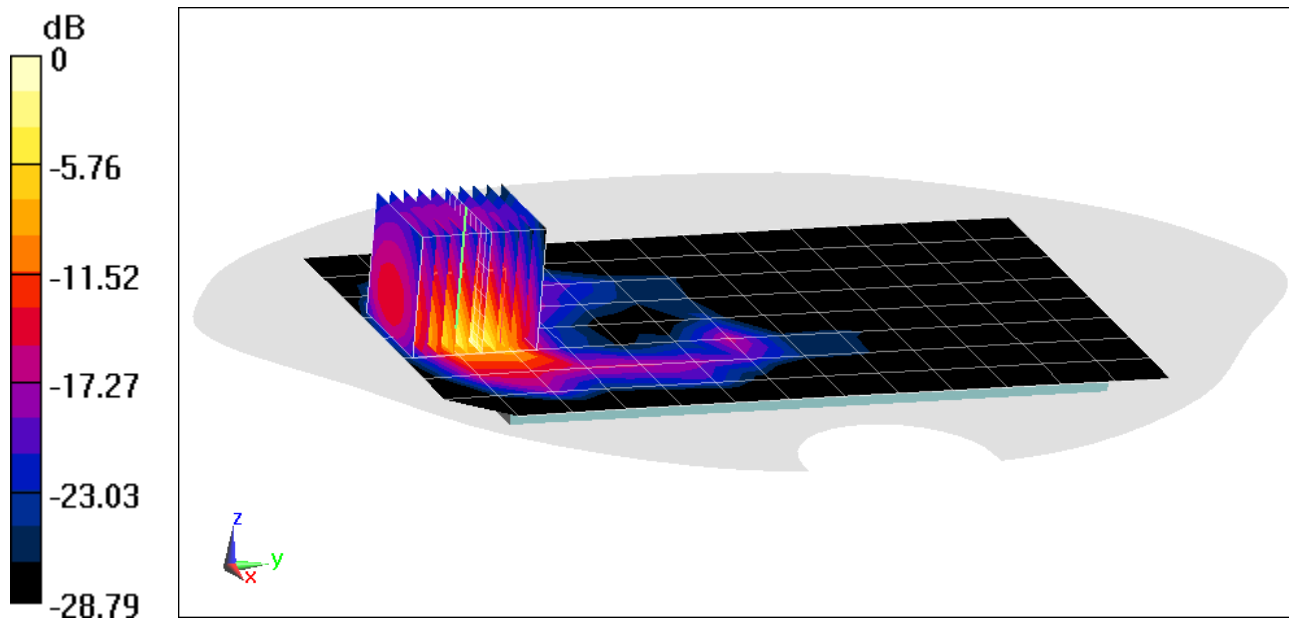
Test Date: 08/30/2021; Ambient Temp: 21.2°C; Tissue Temp: 21.3°C

Probe: EX3DV4 - SN7410; ConvF(7.7, 7.7, 7.7) @ 1860 MHz; Calibrated: 7/20/2021
Sensor-Surface: 1.4mm (Mechanical Surface Detection)
Electronics: DAE4 Sn1583; Calibrated: 7/13/2021
Phantom: Twin-SAM V5.0 (Front); Type: QD 000 P40 CD; Serial: 1792
Measurement SW: DASY52, Version 52.10 (4);SEMCAD X Version 14.6.14 (7483)

**Mode: LTE Band 25 (PCS), Phablet SAR, Back side, Low.ch,
20 MHz Bandwidth, QPSK, 1 RB, 0 RB Offset**

Area Scan (9x14x1): Measurement grid: $dx=15\text{mm}$, $dy=15\text{mm}$

Zoom Scan (10x10x8)/Cube 0: Measurement grid: $dx=3.8\text{mm}$, $dy=3.8\text{mm}$, $dz=1.4\text{mm}$; Graded Ratio: 1.4
Reference Value = 60.03 V/m; Power Drift = 0.01 dB
Peak SAR (extrapolated) = 13.7 W/kg
SAR(10 g) = 1.87 W/kg



0 dB = 9.16 W/kg = 9.62 dBW/kg

PCTEST

DUT: A3LSMF711B1; Type: Portable Handset; Serial: 6266M

Communication System: UID:10494-AAF, LTE-TDD; MAIA: Y; Frequency: 2680.0 MHz

Medium: 2450 Body; Medium parameters used:

$f = 2680.0$ MHz; $\text{cond} = 2.32$ S/m; $\text{perm} = 50.9$; $\text{density} = 1000$ kg/m³

Phantom Section: Flat; Space: 0.00 mm

Test Date: 08/23/2021; Ambient Temp: 21.5°C; Tissue Temp: 21.8°C

Probe: EX3DV4 - SN7526; ConvF:(7.11,7.11,7.11); Calibrated: 2021-03-16

Sensor-Surface: 1.4mm (VMS + 6p)

Electronics: DAE4 Sn1272; Calibrated: 2021-03-18

Phantom: Twin-SAM V5.0; Serial: 1758

Measurement SW: cDASY6 Module SAR V16.0.0.116

**Mode: LTE Band 41 PC3, Phablet SAR, Back Side, High.ch,
20 MHz Bandwidth, QPSK, 50 RB, 50 RB Offset**

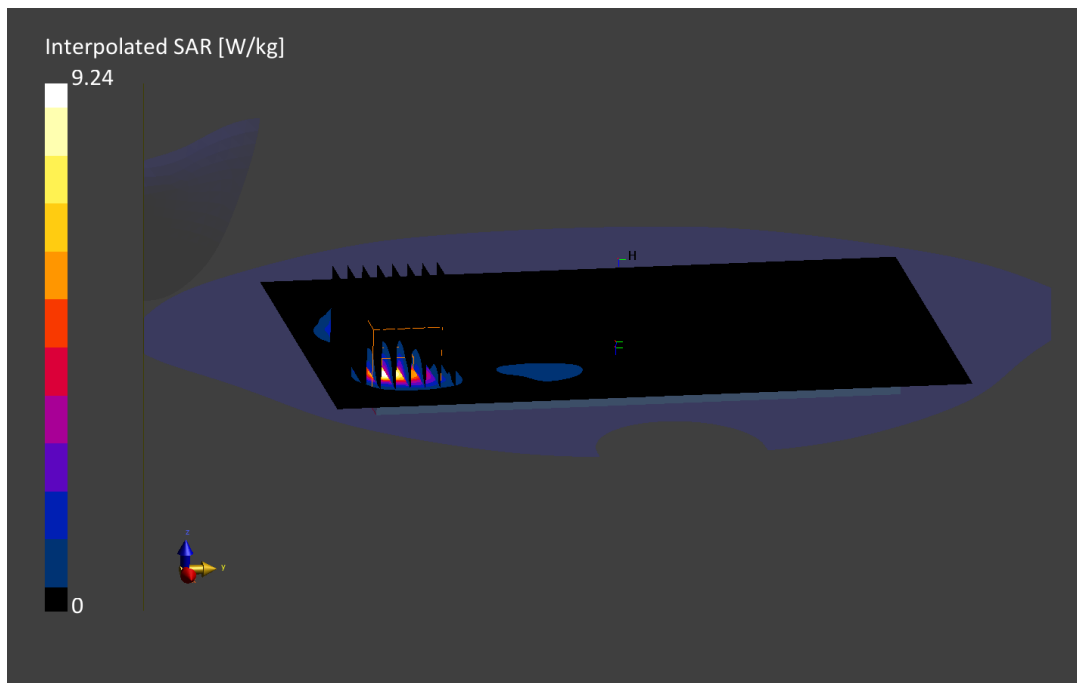
Area Scan (120.0 x 200.0): Measurement grid: $dx=10.0$ mm, $dy=10.0$ mm

Zoom Scan (30.0 x 30.0 x 30.0): Measurement grid: $dx=4.7$ mm, $dy=4.7$ mm, $dz=1.5$ mm; Graded Ratio: 1.5

Reference Value = 2.83 W/kg; Power Drift = 0.00 dB

Peak SAR (extrapolated) = 9.24 W/kg

SAR(10 g) = 1.01 W/kg



PCTEST

DUT: A3LSMF711B1; Type: Portable Handset; Serial: 2635M

Communication System: UID 0, NR Band n66; Frequency: 1720 MHz; Duty Cycle: 1:1

Medium: 1750 Body; Medium parameters used:

$f = 1720$ MHz; $\sigma = 1.494$ S/m; $\epsilon_r = 52.122$; $\rho = 1000$ kg/m³

Phantom section: Flat Section; Space: 0.0 cm

Test Date: 09/05/2021; Ambient Temp: 21.7°C; Tissue Temp: 21.4°C

Probe: EX3DV4 - SN7357; ConvF(8.12, 8.12, 8.12) @ 1720 MHz; Calibrated: 4/19/2021

Sensor-Surface: 1.4mm (Mechanical Surface Detection)

Electronics: DAE4 Sn1407; Calibrated: 4/7/2021

Phantom: Twin-SAM V5.0 Front (20); Type: QD 000 P40 CD; Serial: 1686

Measurement SW: DASY52, Version 52.10 (4);SEMCAD X Version 14.6.14 (7483)

**Mode: NR Band n66, Phablet SAR, Back Side, 20 MHz Bandwidth,
CP-OFDM QPSK, Ch. 344000, 1 RB, 1 RB Offset**

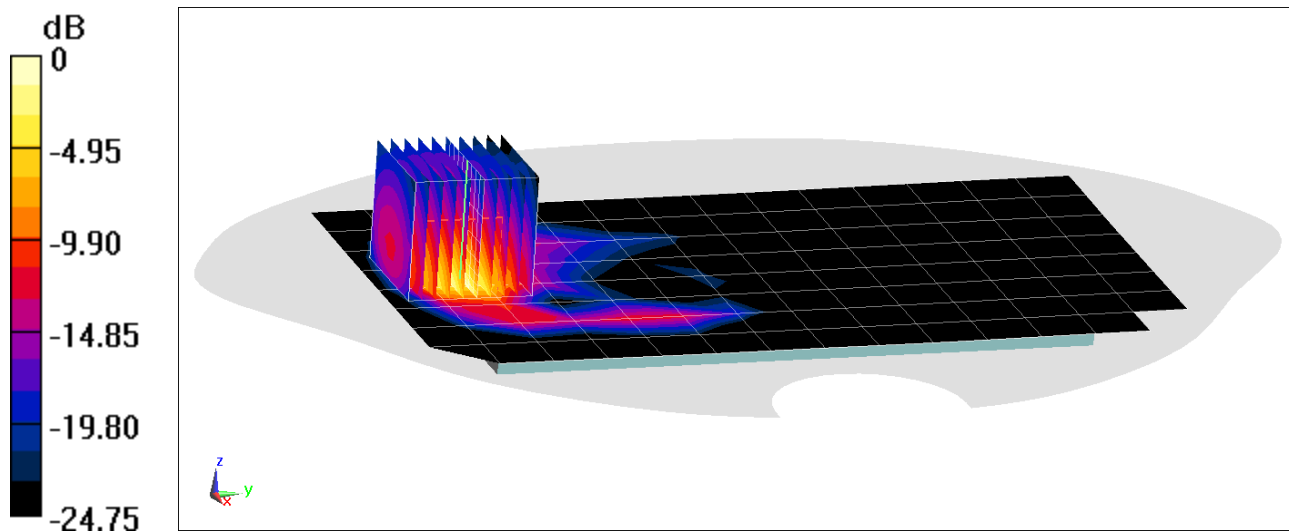
Area Scan (9x15x1): Measurement grid: dx=15mm, dy=15mm

Zoom Scan (10x10x8)/Cube 0: Measurement grid: dx=3.8mm, dy=3.8mm, dz=1.4mm; Graded Ratio: 1.4

Reference Value = 43.77 V/m; Power Drift = 0.13 dB

Peak SAR (extrapolated) = 15.2 W/kg

SAR(10 g) = 2.33 W/kg



0 dB = 10.5 W/kg = 10.21 dBW/kg

PCTEST

DUT: A3LSMF711B1; Type: Portable Handset; Serial: 1274M

Communication System: UID:10196-AAC, WLAN; MAIA: Y; Frequency: 5260.0 MHz
Medium: 5200-5800 Body; Medium parameters used:
f = 5260.0 MHz; cond = 5.38 S/m; perm = 47.8; density = 1000 kg/m³
Phantom Section: Flat; Space: 0.00 mm

Test Date: 08/14/2021; Ambient Temp: 21.1°C; Tissue Temp: 22.5°C

Probe: EX3DV4 - SN7526; ConvF:(4.55,4.55,4.55); Calibrated: 2021-03-16
Sensor-Surface: 1.4mm (VMS + 6p)
Electronics: DAE4 Sn1272; Calibrated: 2021-03-18
Phantom: Twin-SAM V5.0; Serial: 1758
Measurement SW: cDASY6 Module SAR V16.0.0.116

**Mode: IEEE 802.11n, UNII-2A, 20 MHz Bandwidth, MIMO,
Phablet SAR, Left Edge, Ch.52, 13 Mbps**

Area Scan (40.0 x 200.0): Measurement grid: dx=5.0mm, dy=10.0mm

Zoom Scan (22.0 x 22.0 x 22.0): Measurement grid: dx=3.1mm, dy=3.1mm, dz=1.2mm; Graded Ratio: 1.2

Reference Value = 4.96 W/kg; Power Drift = -0.02 dB

Peak SAR (extrapolated) = 37.1 W/kg

SAR(10 g) = 1.38 W/kg

