

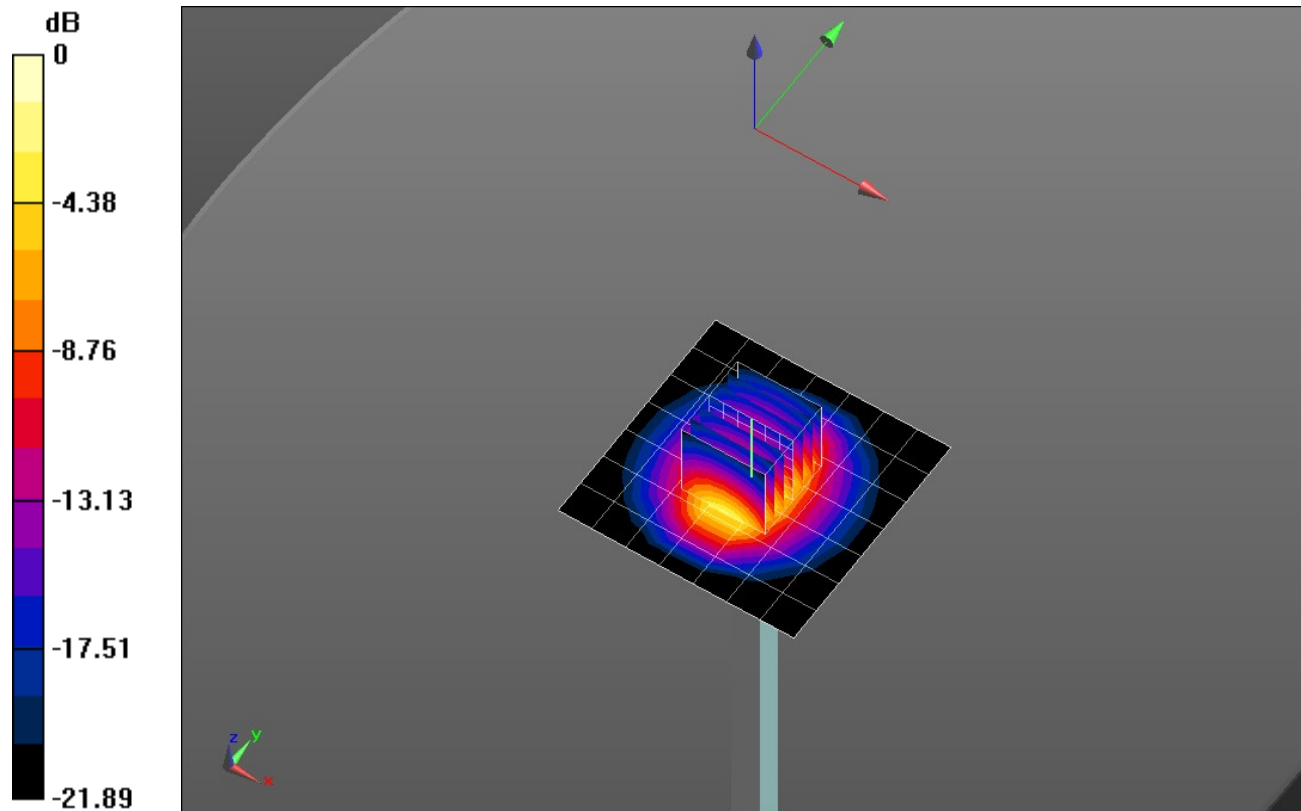
SystemPerformanceCheck-D2450V2 SN 706

Frequency: 2450 MHz; Duty Cycle: 1:1; Room Ambient Temperature: 24.0°C; Liquid Temperature: 23.0°C
 Medium parameters used: $f = 2450 \text{ MHz}$; $\sigma = 1.996 \text{ S/m}$; $\epsilon_r = 50.512$; $\rho = 1000 \text{ kg/m}^3$
 DASY5 Configuration:

- Area Scan Setting: Find Secondary Maximum Within: 2.0 dB and with a peak SAR value greater than 0.0012W/kg
- Electronics: DAE3 Sn427; Calibrated: 1/21/2014
- Probe: EX3DV4 - SN3902; ConvF(7.35, 7.35, 7.35); Calibrated: 5/19/2014;
- Sensor-Surface: 2.5mm (Mechanical Surface Detection)
- Phantom: ELI-B v5.0; Type: QDOVA002AA; Serial: TP:1195

Body/Pin=100 mW/Area Scan (8x8x1): Measurement grid: dx=12mm, dy=12mm
 Maximum value of SAR (measured) = 5.42 W/kg

Body/Pin=100 mW/Zoom Scan (7x7x7)/Cube 0: Measurement grid: dx=5mm, dy=5mm, dz=5mm
 Reference Value = 61.349 V/m; Power Drift = 0.02 dB
 Peak SAR (extrapolated) = 10.9 W/kg
SAR(1 g) = 5.25 W/kg; SAR(10 g) = 2.43 W/kg
 Maximum value of SAR (measured) = 7.48 W/kg

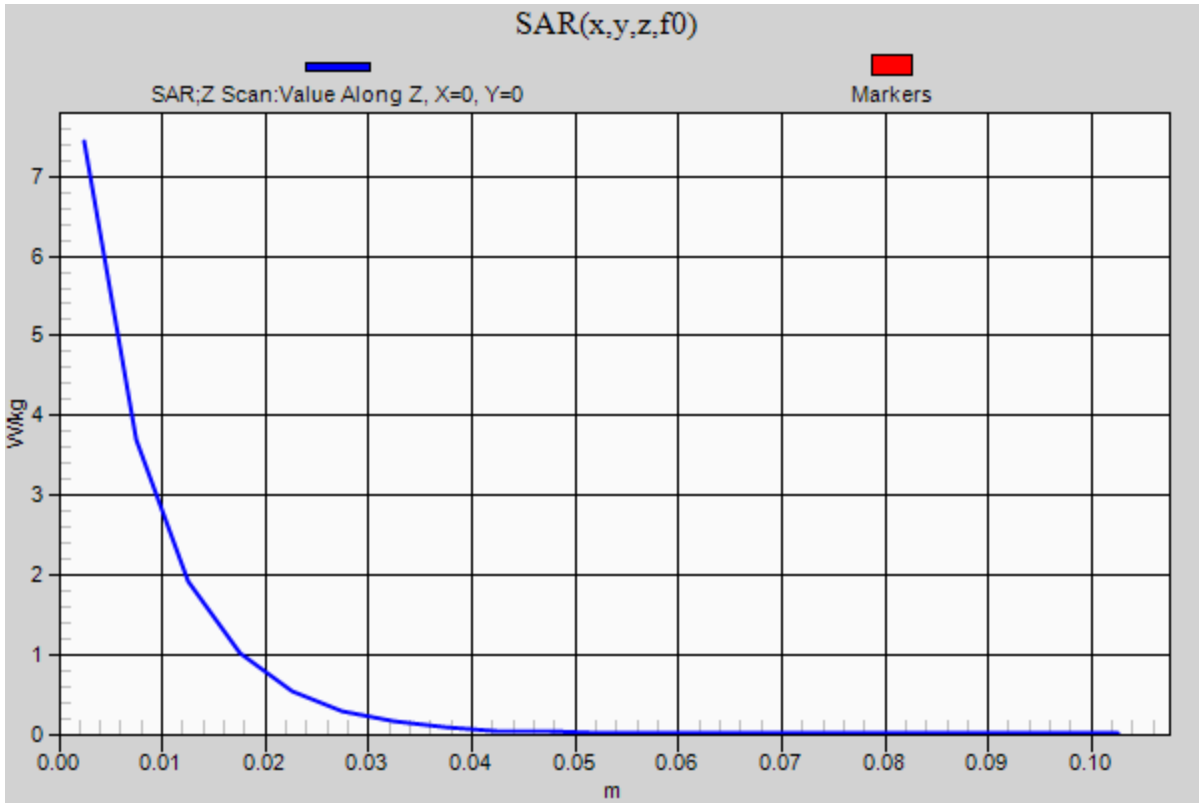


0 dB = 7.48 W/kg = 8.74 dBW/kg

SystemPerformanceCheck-D2450V2 SN 706

Frequency: 2450 MHz; Duty Cycle: 1:1

Body/Pin=100 mW/Z Scan (1x1x21): Measurement grid: dx=20mm, dy=20mm, dz=5mm
Maximum value of SAR (measured) = 7.44 W/kg



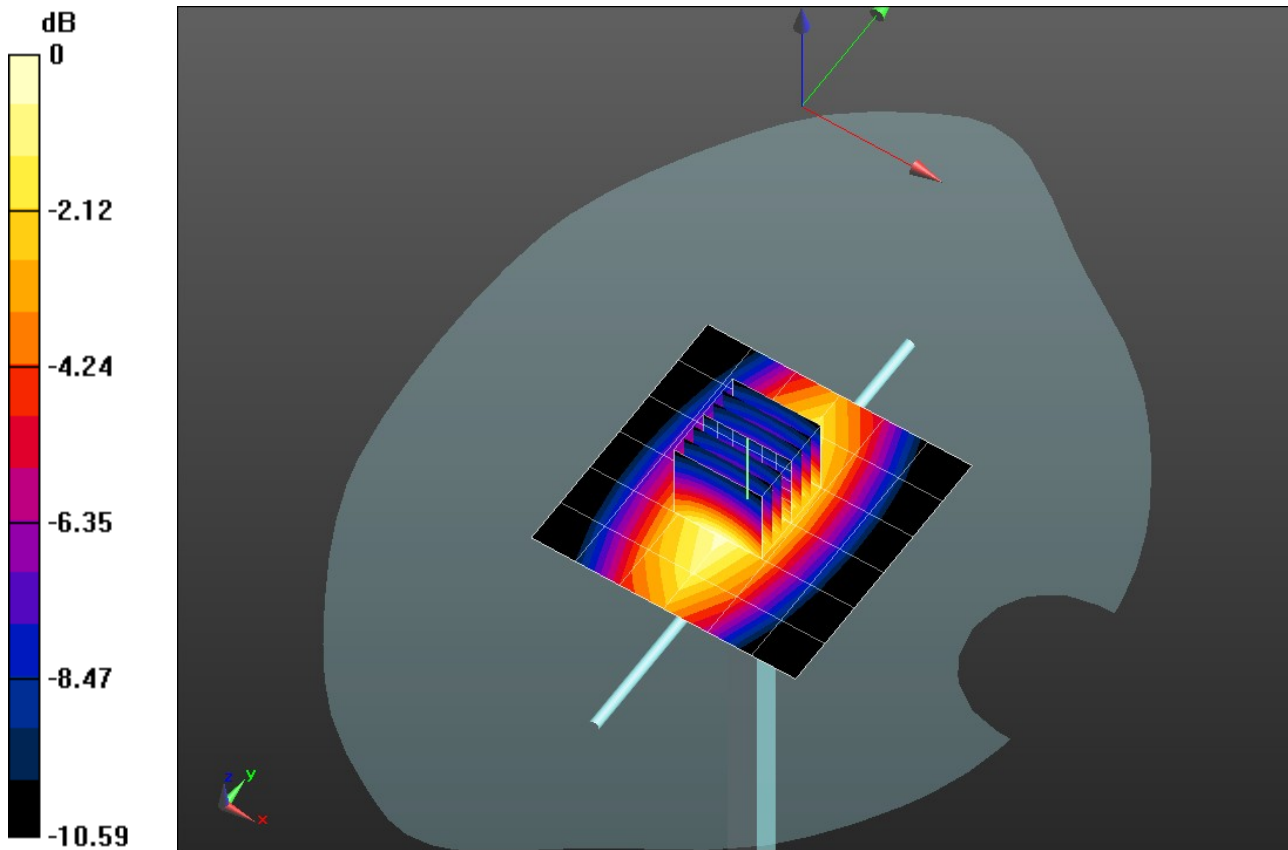
SystemPerformanceCheck-D835V2 SN 4d117

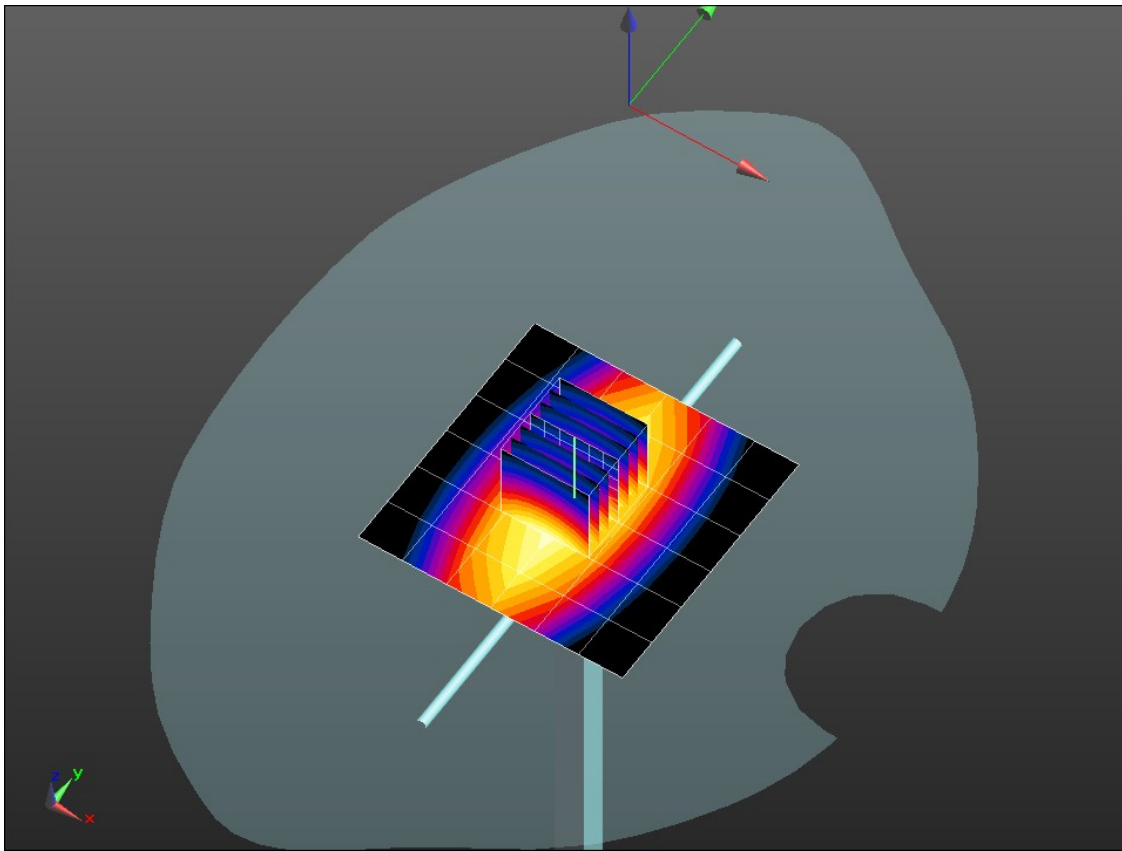
Frequency: 835 MHz; Duty Cycle: 1:1; Room Ambient Temperature: 24.0°C; Liquid Temperature: 23.0°C
 Medium parameters used: $f = 835 \text{ MHz}$; $\sigma = 0.884 \text{ S/m}$; $\epsilon_r = 42.761$; $\rho = 1000 \text{ kg/m}^3$
 DASY5 Configuration:

- Area Scan Setting: Find Secondary Maximum Within: 2.0 dB and with a peak SAR value greater than 0.0012W/kg
- Electronics: DAE4 Sn1259; Calibrated: 1/23/2014
- Probe: EX3DV4 - SN3772; ConvF(8.98, 8.98, 8.98); Calibrated: 2/26/2014;
- Sensor-Surface: 2.5mm (Mechanical Surface Detection)
- Phantom: SAM v5.0 (A); Type: QD000P40CD; Serial: 1602

Head/Pin=100 mW/Area Scan (7x7x1): Measurement grid: dx=15mm, dy=15mm
 Maximum value of SAR (measured) = 1.09 W/kg

Head/Pin=100 mW/Zoom Scan (7x7x7)/Cube 0: Measurement grid: dx=5mm, dy=5mm, dz=5mm
 Reference Value = 34.45 V/m; Power Drift = -0.01 dB
 Peak SAR (extrapolated) = 1.35 W/kg
SAR(1 g) = 0.898 W/kg; SAR(10 g) = 0.586 W/kg
 Maximum value of SAR (measured) = 1.10 W/kg





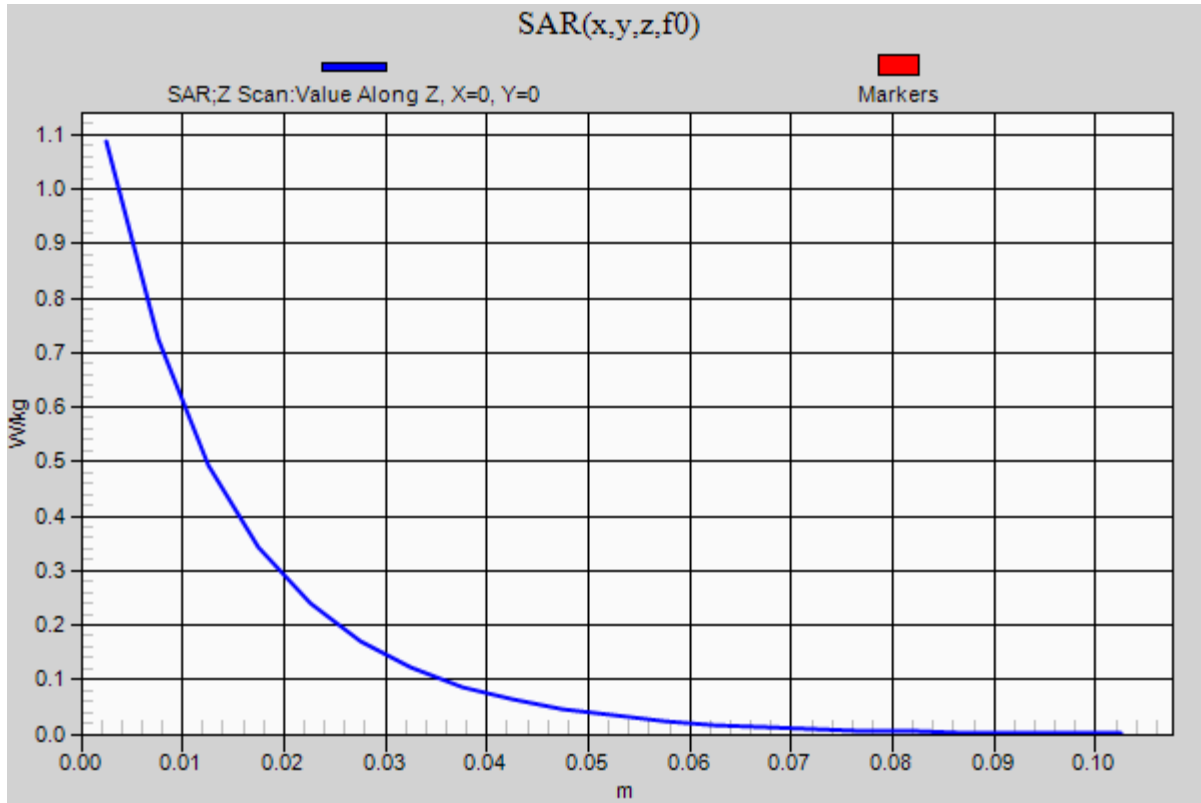
0 dB = 1.10 W/kg = 0.41 dBW/kg

SystemPerformanceCheck-D835V2 SN 4d117

Frequency: 835 MHz; Duty Cycle: 1:1

Head/Pin=100 mW/Z Scan (1x1x21): Measurement grid: dx=20mm, dy=20mm, dz=5mm

Maximum value of SAR (measured) = 1.09 W/kg



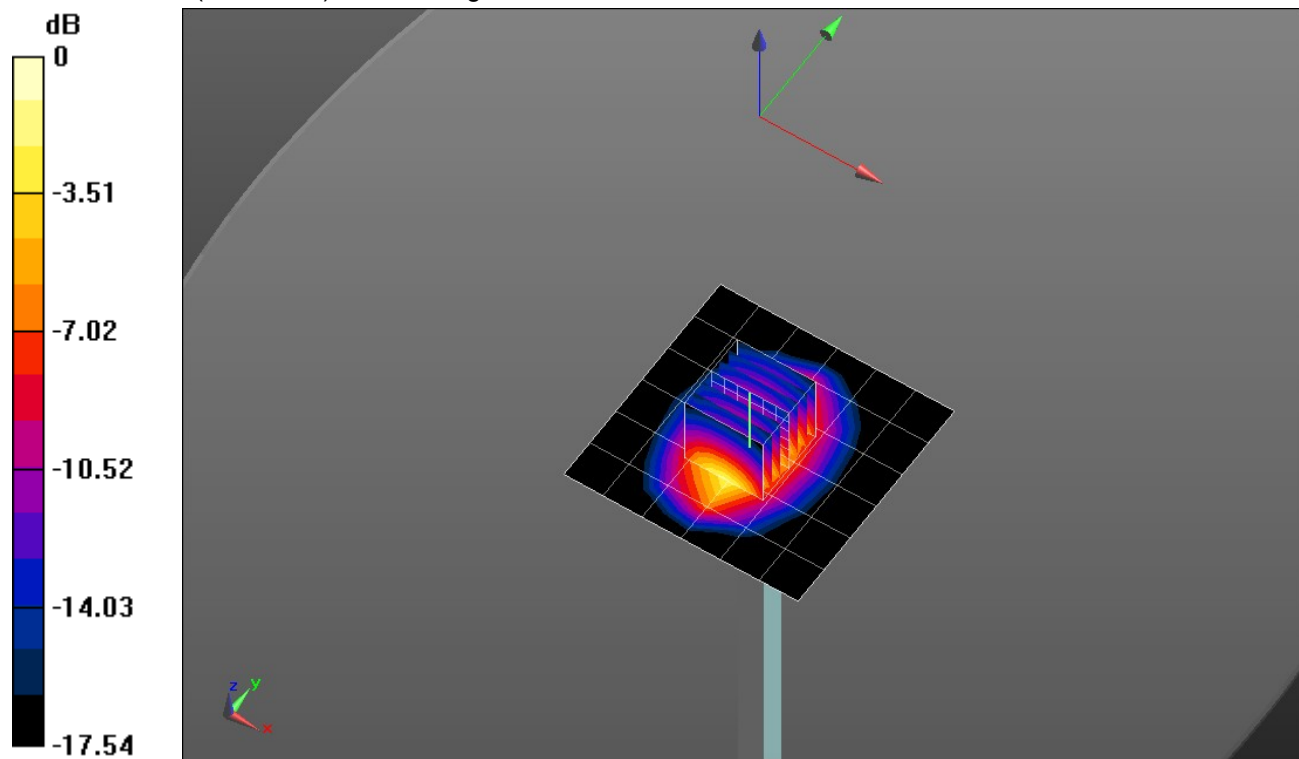
SystemPerformanceCheck-D1900V2 SN 5d140

Frequency: 1900 MHz; Duty Cycle: 1:1; Room Ambient Temperature: 24.0°C; Liquid Temperature: 23.0°C
 Medium parameters used: $f = 1900 \text{ MHz}$; $\sigma = 1.557 \text{ S/m}$; $\epsilon_r = 51.363$; $\rho = 1000 \text{ kg/m}^3$
 DASY5 Configuration:

- Area Scan Setting: Find Secondary Maximum Within: 2.0 dB and with a peak SAR value greater than 0.0012W/kg
- Electronics: DAE4 Sn1258; Calibrated: 5/15/2014
- Probe: EX3DV4 - SN3686; ConvF(7.09, 7.09, 7.09); Calibrated: 3/18/2014;
- Sensor-Surface: 2.5mm (Mechanical Surface Detection)
- Phantom: ELI v5.0 B; Type: SM 000 T01 DA; Serial: TP:1247

Body/Pin=100 mW/Area Scan (7x7x1): Measurement grid: dx=15mm, dy=15mm
 Maximum value of SAR (measured) = 5.40 W/kg

Body/Pin=100 mW/Zoom Scan (7x7x7)/Cube 0: Measurement grid: dx=5mm, dy=5mm, dz=5mm
 Reference Value = 59.829 V/m; Power Drift = -0.02 dB
 Peak SAR (extrapolated) = 7.55 W/kg
SAR(1 g) = 4.13 W/kg; SAR(10 g) = 2.14 W/kg
 Maximum value of SAR (measured) = 5.62 W/kg



0 dB = 5.62 W/kg = 7.50 dBW/kg

SystemPerformanceCheck-D1900V2 SN 5d140

Frequency: 1900 MHz; Duty Cycle: 1:1

Body/Pin=100 mW/Z Scan (1x1x21): Measurement grid: dx=20mm, dy=20mm, dz=5mm
Maximum value of SAR (measured) = 5.40 W/kg

