

20140902 SystemPerformanceCheck-D2450V2 SN 899

Frequency: 2450 MHz; Duty Cycle: 1:1; Room Ambient Temperature: 24.0°C; Liquid Temperature: 23.0°C

Medium parameters used: $f = 2450$ MHz; $\sigma = 2.043$ S/m; $\epsilon_r = 52.437$; $\rho = 1000$ kg/m³

DASY5 Configuration:

- Area Scan Setting: Find Secondary Maximum Within: 2.0 dB and with a peak SAR value greater than 0.0012W/kg
- Electronics: DAE3 Sn427; Calibrated: 1/21/2014
- Probe: EX3DV4 - SN3902; ConvF(7.35, 7.35, 7.35); Calibrated: 5/19/2014;
- Sensor-Surface: 2.5mm (Mechanical Surface Detection)
- Phantom: ELI-A v5.0; Type: QDOVA002AA; Serial: TP 1194

Body/Pin=100 mW/Area Scan (71x71x1): Interpolated grid: dx=1.200 mm, dy=1.200 mm

Reference Value = 61.236 V/m; Power Drift = 0.14 dB

Fast SAR: SAR(1 g) = 5.39 W/kg; SAR(10 g) = 2.35 W/kg

Maximum value of SAR (interpolated) = 7.90 W/kg

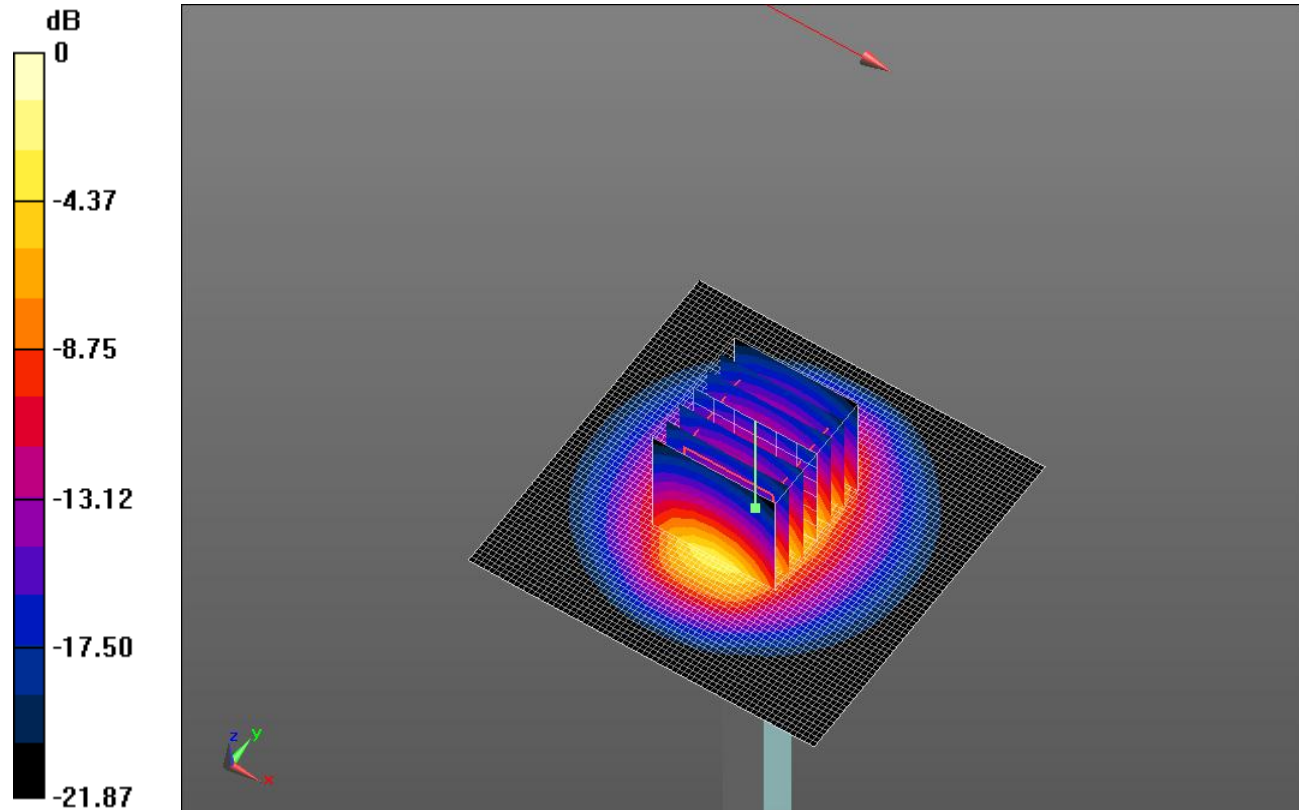
Body/Pin=100 mW/Zoom Scan (7x7x7)/Cube 0: Measurement grid: dx=5mm, dy=5mm, dz=5mm

Reference Value = 61.236 V/m; Power Drift = 0.14 dB

Peak SAR (extrapolated) = 11.3 W/kg

SAR(1 g) = 5.45 W/kg; SAR(10 g) = 2.52 W/kg

Maximum value of SAR (measured) = 7.78 W/kg

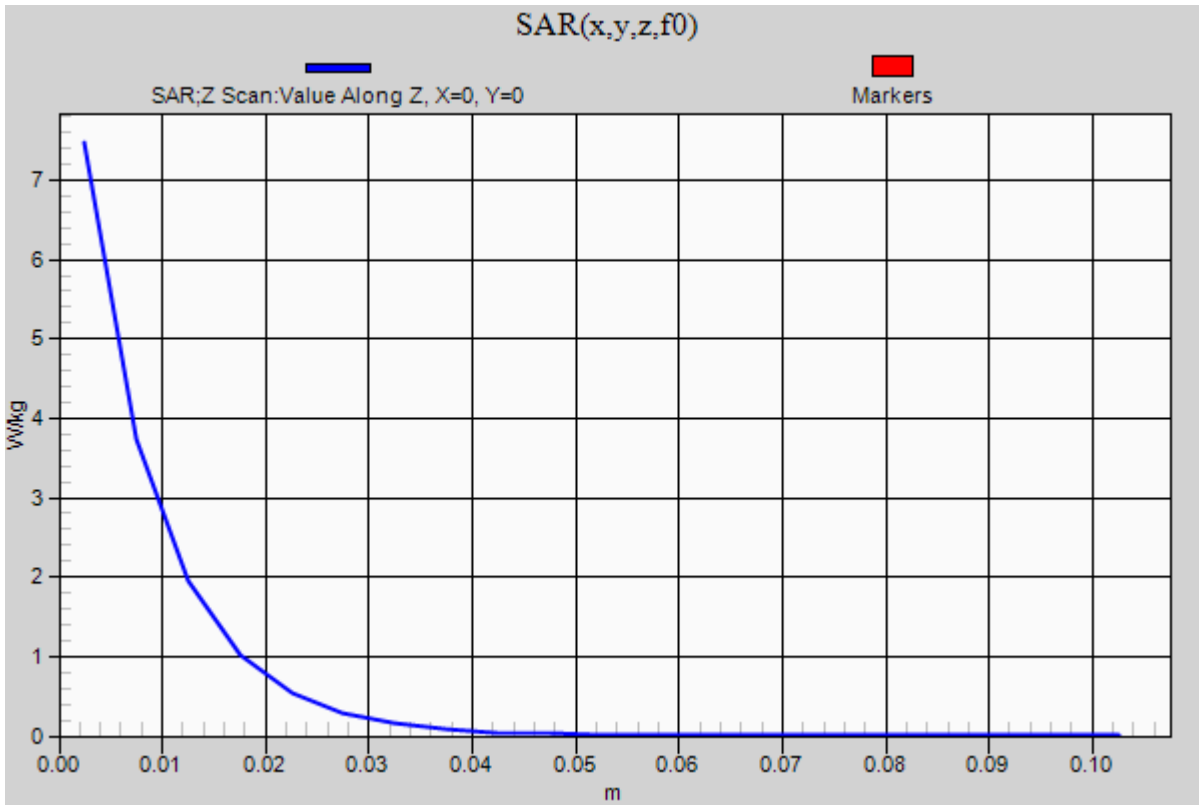


0 dB = 7.78 W/kg = 8.91 dBW/kg

20140902 SystemPerformanceCheck-D2450V2 SN 899

Frequency: 2450 MHz; Duty Cycle: 1:1

Body/Pin=100 mW/Z Scan (1x1x21): Measurement grid: dx=20mm, dy=20mm, dz=5mm
Maximum value of SAR (measured) = 7.47 W/kg



20140902_SystemPerformanceCheck-D2600V2 SN 1006

Frequency: 2600 MHz; Duty Cycle: 1:1; Room Ambient Temperature: 24.0°C; Liquid Temperature: 23.0°C
 Medium parameters used: $f = 2600$ MHz; $\sigma = 2.2$ S/m; $\epsilon_r = 50.23$; $\rho = 1000$ kg/m³

DASY5 Configuration:

- Area Scan Setting: Find Secondary Maximum Within: 2.0 dB and with a peak SAR value greater than 0.0012W/kg
- Averaged Fast SAR: Polynomial fit
- Electronics: DAE4 Sn1359; Calibrated: 2/17/2014
- Probe: EX3DV3 - SN3531; ConvF(7.12, 7.12, 7.12); Calibrated: 11/21/2013;
- Sensor-Surface: 2.5mm (Mechanical Surface Detection)
- Phantom: ELI B v4.0; Type: QDOVA002AA; Serial: 1196

Body/Pin=100 mW/Area Scan (71x71x1): Interpolated grid: dx=1.200 mm, dy=1.200 mm

Reference Value = 61.143 V/m; Power Drift = 0.02 dB

Fast SAR: SAR(1 g) = 5.61 W/kg; SAR(10 g) = 2.43 W/kg

Maximum value of SAR (interpolated) = 8.39 W/kg

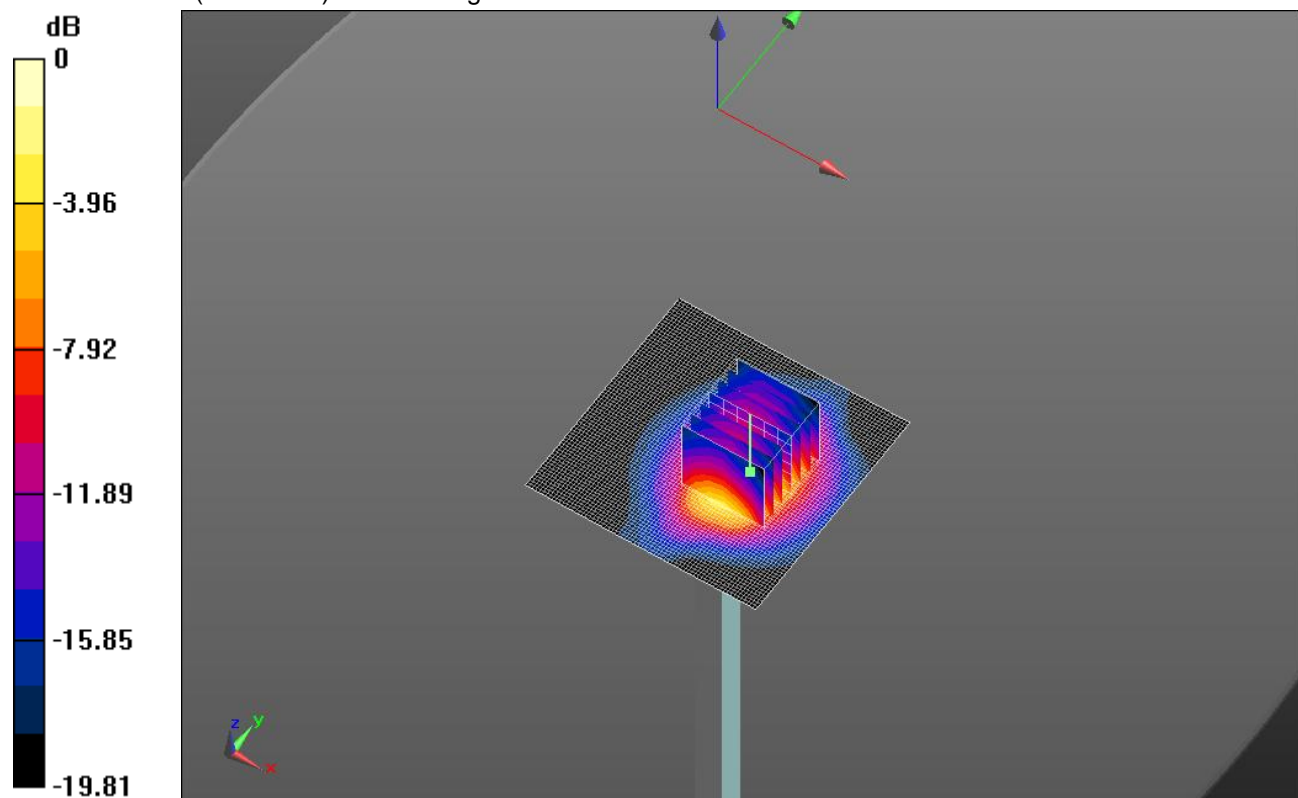
Body/Pin=100 mW/Zoom Scan (7x7x7)/Cube 0: Measurement grid: dx=5mm, dy=5mm, dz=5mm

Reference Value = 61.143 V/m; Power Drift = 0.02 dB

Peak SAR (extrapolated) = 10.0 W/kg

SAR(1 g) = 5.32 W/kg; SAR(10 g) = 2.5 W/kg

Maximum value of SAR (measured) = 7.45 W/kg

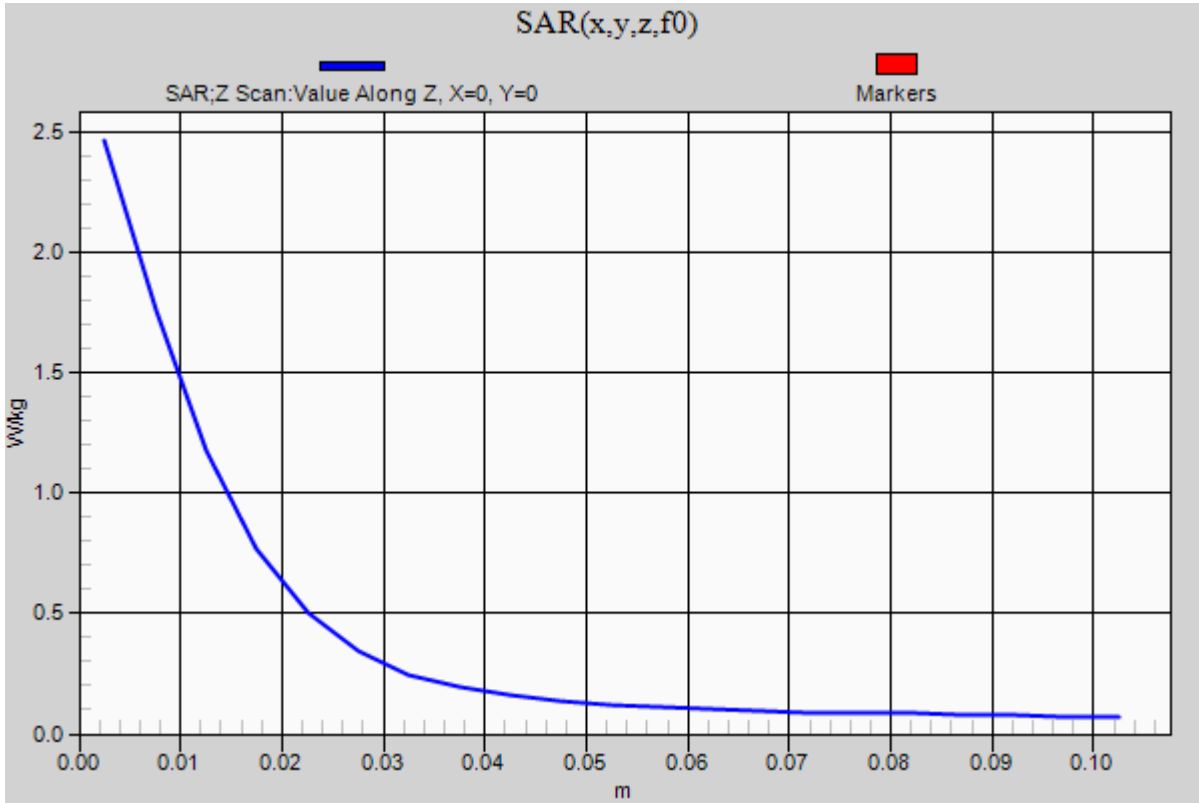


0 dB = 7.45 W/kg = 8.72 dBW/kg

20140902_SystemPerformanceCheck-D2600V2 SN 1006

Frequency: 2600 MHz; Duty Cycle: 1:1

Body/Pin=100 mW/Z Scan (1x1x21): Measurement grid: dx=20mm, dy=20mm, dz=5mm
Maximum value of SAR (measured) = 2.46 W/kg



20140902_SystemPerformanceCheck-D835V2 SN 4d002

Frequency: 835 MHz; Duty Cycle: 1:1; Room Ambient Temperature: 24.0°C; Liquid Temperature: 23.0°C

Medium parameters used: $f = 835 \text{ MHz}$; $\sigma = 0.933 \text{ S/m}$; $\epsilon_r = 41.986$; $\rho = 1000 \text{ kg/m}^3$

DASY5 Configuration:

- Area Scan Setting: Find Secondary Maximum Within: 2.0 dB and with a peak SAR value greater than 0.0012W/kg
- Electronics: DAE4 Sn1439; Calibrated: 5/14/2014
- Probe: EX3DV4 - SN3991; ConvF(9.94, 9.94, 9.94); Calibrated: 5/16/2014;
- Sensor-Surface: 2.5mm (Mechanical Surface Detection)
- Phantom: TWIN SAM v5.0; Type: QD000P40CD; Serial: TP:1829

Head/Pin=100 mW/Area Scan (61x61x1): Interpolated grid: dx=1.500 mm, dy=1.500 mm

Reference Value = 34.45 V/m; Power Drift = 0.01 dB

Fast SAR: SAR(1 g) = 1.05 W/kg; SAR(10 g) = 0.712 W/kg

Maximum value of SAR (interpolated) = 1.24 W/kg

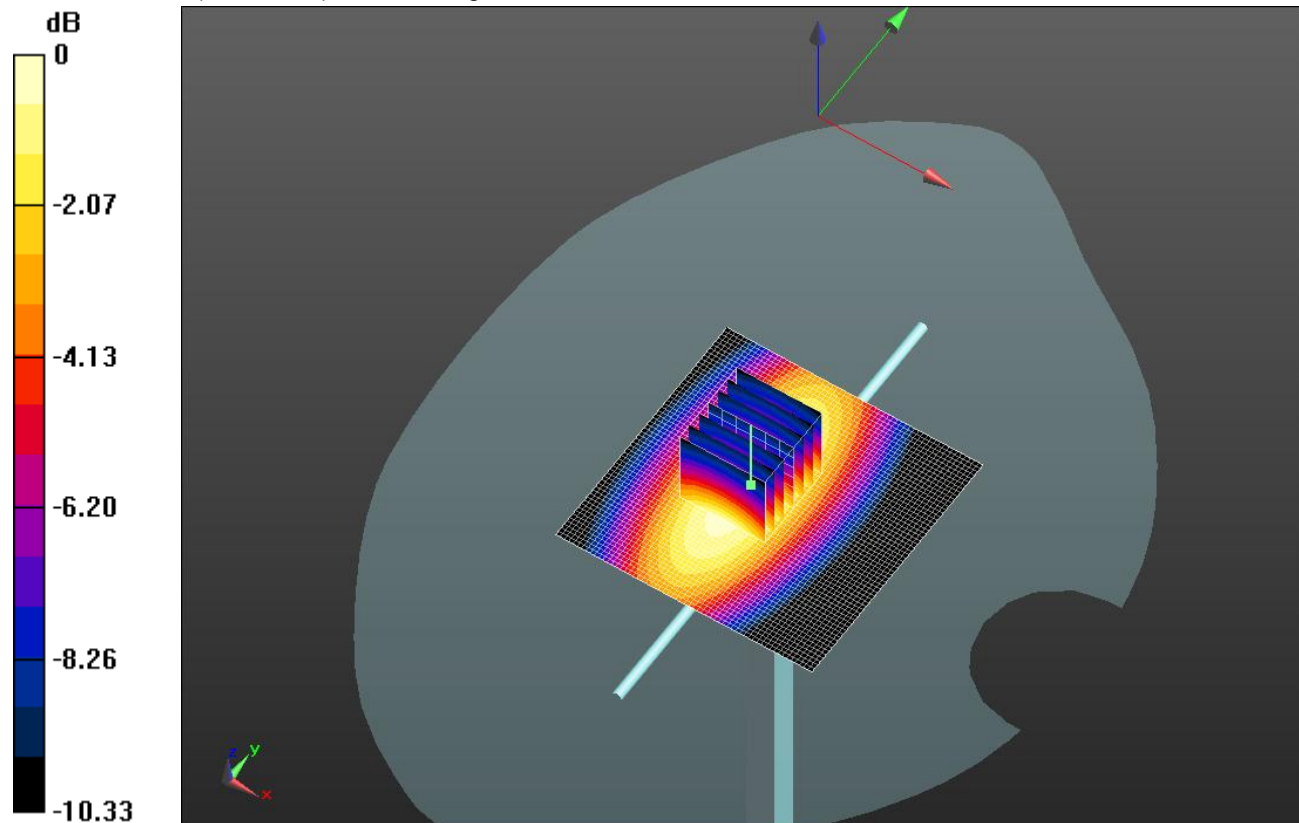
Head/Pin=100 mW/Zoom Scan (7x7x7)/Cube 0: Measurement grid: dx=5mm, dy=5mm, dz=5mm

Reference Value = 34.45 V/m; Power Drift = 0.01 dB

Peak SAR (extrapolated) = 1.54 W/kg

SAR(1 g) = 1.03 W/kg; SAR(10 g) = 0.679 W/kg

Maximum value of SAR (measured) = 1.25 W/kg

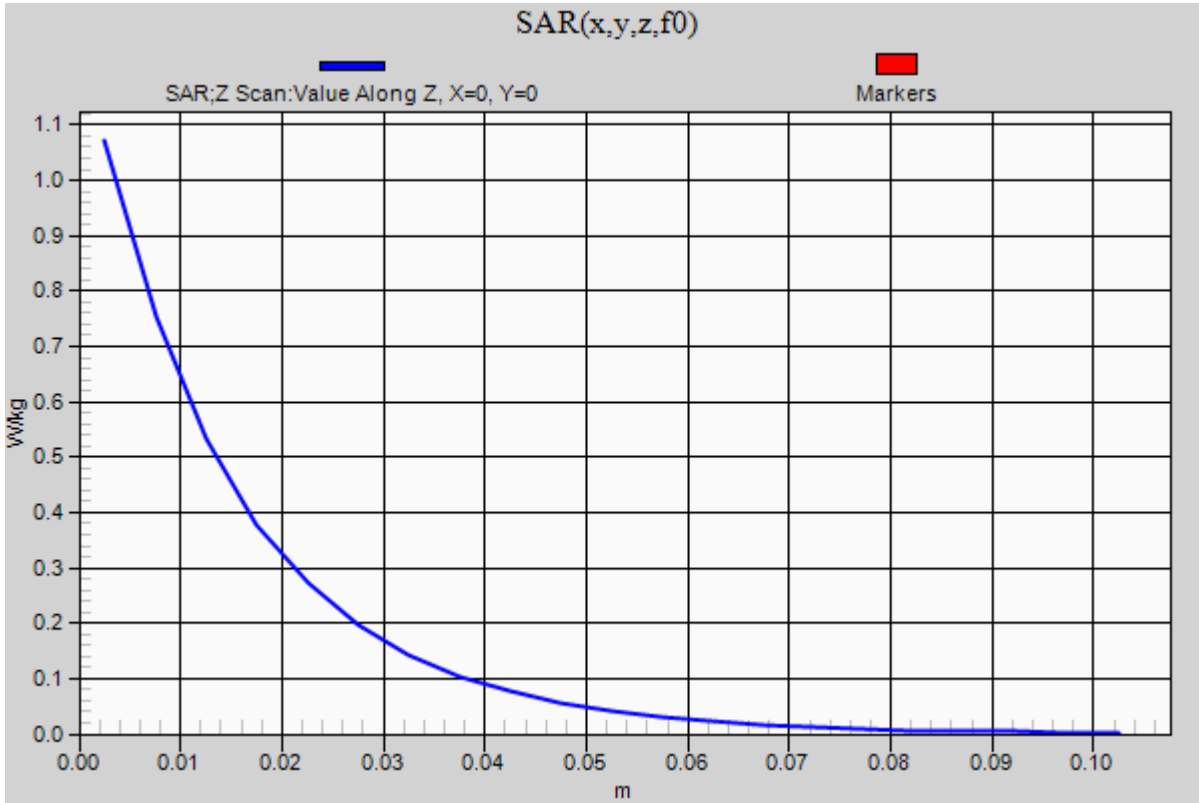


0 dB = 1.25 W/kg = 0.97 dBW/kg

20140902_SystemPerformanceCheck-D835V2 SN 4d002

Frequency: 835 MHz; Duty Cycle: 1:1

Head/Pin=100 mW/Z Scan (1x1x21): Measurement grid: dx=20mm, dy=20mm, dz=5mm
Maximum value of SAR (measured) = 1.07 W/kg



20140903_SystemPerformanceCheck-D1900V2 SN 5d163

Frequency: 1900 MHz; Duty Cycle: 1:1; Room Ambient Temperature: 24.0°C; Liquid Temperature: 23.0°C

Medium parameters used: $f = 1900$ MHz; $\sigma = 1.409$ S/m; $\epsilon_r = 39.284$; $\rho = 1000$ kg/m³

DASY5 Configuration:

- Area Scan Setting: Find Secondary Maximum Within: 2.0 dB and with a peak SAR value greater than 0.0012W/kg
- Averaged Fast SAR: Polynomial fit
- Electronics: DAE4 Sn1439; Calibrated: 5/14/2014
- Probe: EX3DV4 - SN3991; ConvF(8.55, 8.55, 8.55); Calibrated: 5/16/2014;
- Sensor-Surface: 2.5mm (Mechanical Surface Detection)
- Phantom: TWIN SAM v5.0; Type: QD000P40CD; Serial: TP:1829

Head/Pin=100 mW/Area Scan (61x61x1): Interpolated grid: dx=1.500 mm, dy=1.500 mm

Reference Value = 47.46 V/m; Power Drift = 0.17 dB

Fast SAR: SAR(1 g) = 3.84 W/kg; SAR(10 g) = 2.03 W/kg

Maximum value of SAR (interpolated) = 5.12 W/kg

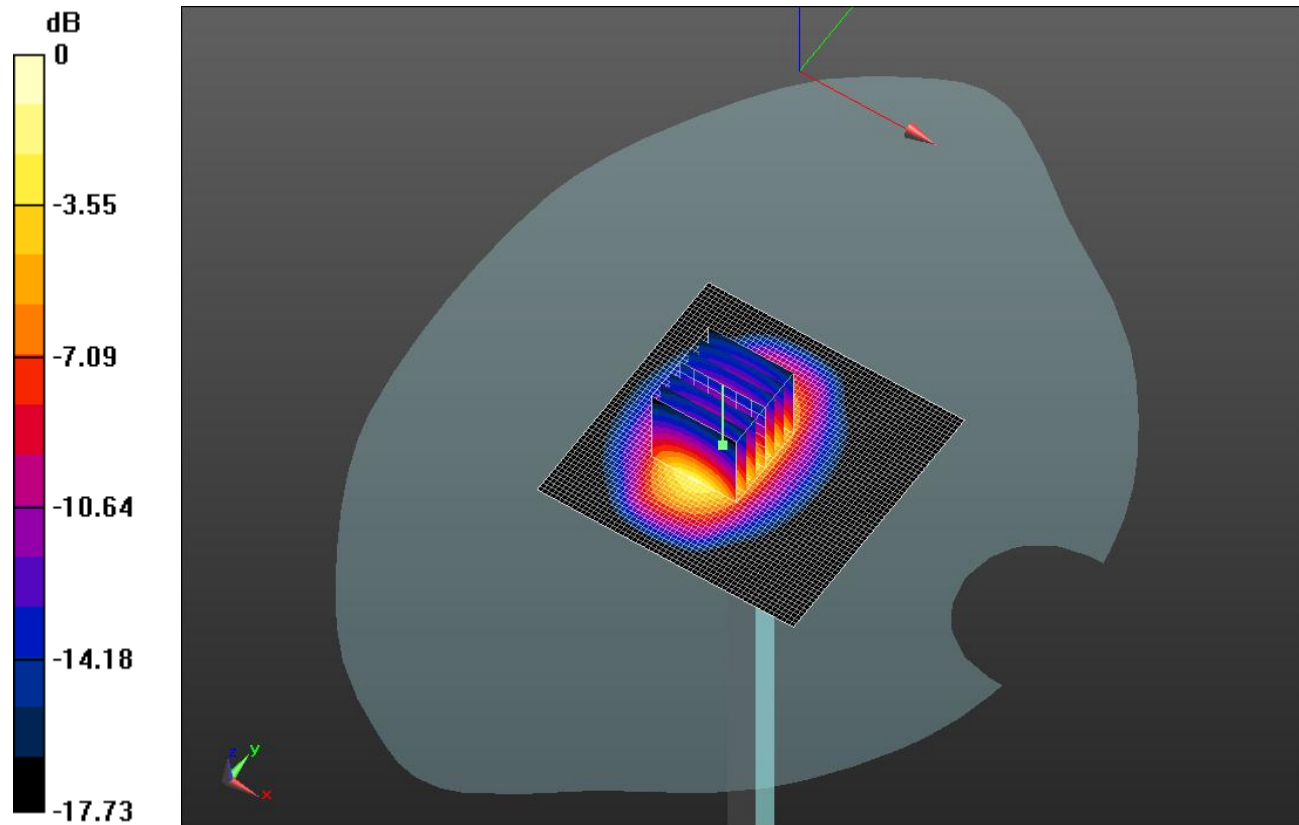
Head/Pin=100 mW/Zoom Scan (7x7x7)/Cube 0: Measurement grid: dx=5mm, dy=5mm, dz=5mm

Reference Value = 47.46 V/m; Power Drift = 0.17 dB

Peak SAR (extrapolated) = 7.18 W/kg

SAR(1 g) = 3.83 W/kg; SAR(10 g) = 1.98 W/kg

Maximum value of SAR (measured) = 5.21 W/kg

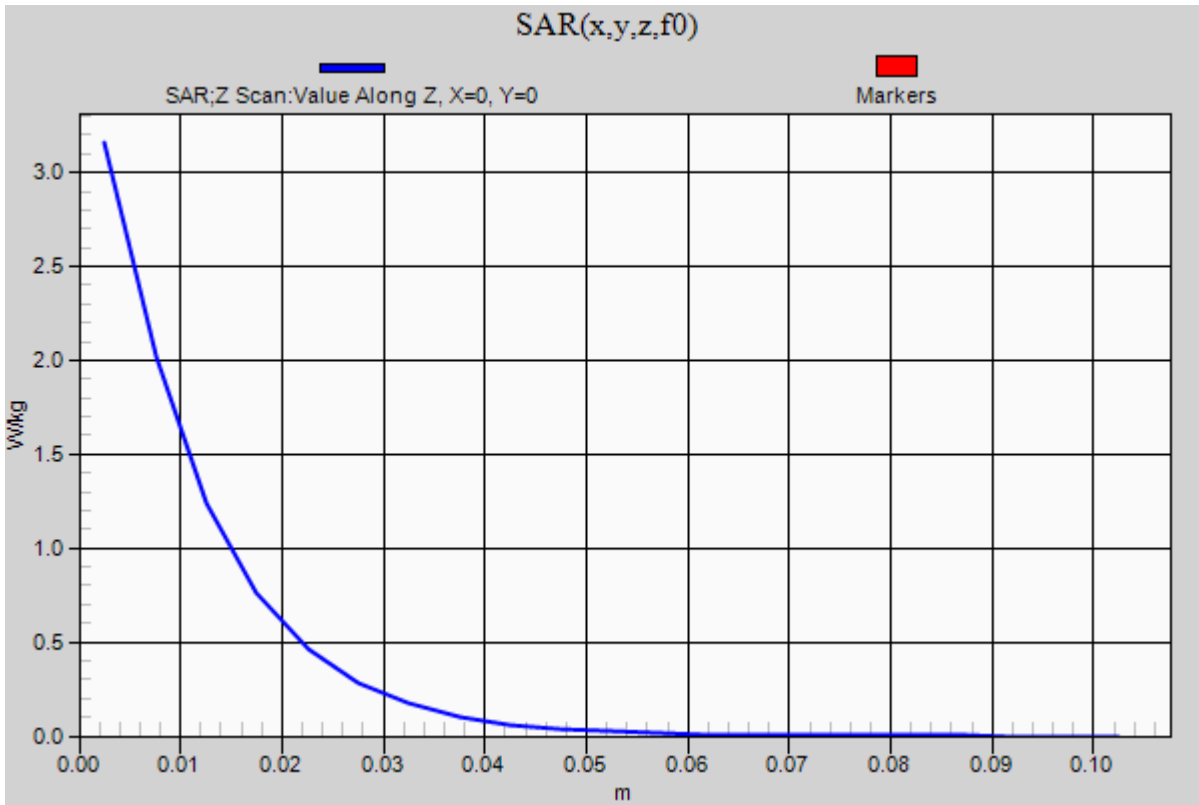


0 dB = 5.21 W/kg = 7.17 dBW/kg

20140903_SystemPerformanceCheck-D1900V2 SN 5d163

Frequency: 1900 MHz; Duty Cycle: 1:1

Head/Pin=100 mW/Z Scan (1x1x21): Measurement grid: dx=20mm, dy=20mm, dz=5mm
Maximum value of SAR (measured) = 3.16 W/kg



GSM 850

Frequency: 836.6 MHz; Duty Cycle: 1:8.00018; Room Ambient Temperature: 24.0°C; Liquid Temperature: 23.0°C
 Medium parameters used (interpolated): $f = 836.6$ MHz; $\sigma = 0.935$ S/m; $\epsilon_r = 41.962$; $\rho = 1000$ kg/m³

DASY5 Configuration:

- Area Scan Setting: Find Secondary Maximum Within: 2.0 dB and with a peak SAR value greater than 0.0012W/kg
- Electronics: DAE4 Sn1439; Calibrated: 5/14/2014
- Probe: EX3DV4 - SN3991; ConvF(9.94, 9.94, 9.94); Calibrated: 5/16/2014;
- Sensor-Surface: 2.5mm (Mechanical Surface Detection (Locations From Previous Scan Used)), Sensor-Surface: 2.5mm (Mechanical Surface Detection)
- Phantom: TWIN SAM v5.0; Type: QD000P40CD; Serial: TP:1829

RHS/Touch_GSM Voice_ch 190/Area Scan (7x12x1): Measurement grid: dx=15mm, dy=15mm

[Info: Interpolated medium parameters used for SAR evaluation.](#)

Maximum value of SAR (measured) = 0.0432 W/kg

RHS/Touch_GSM Voice_ch 190/Zoom Scan (5x5x7)/Cube 0: Measurement grid: dx=8mm, dy=8mm, dz=5mm

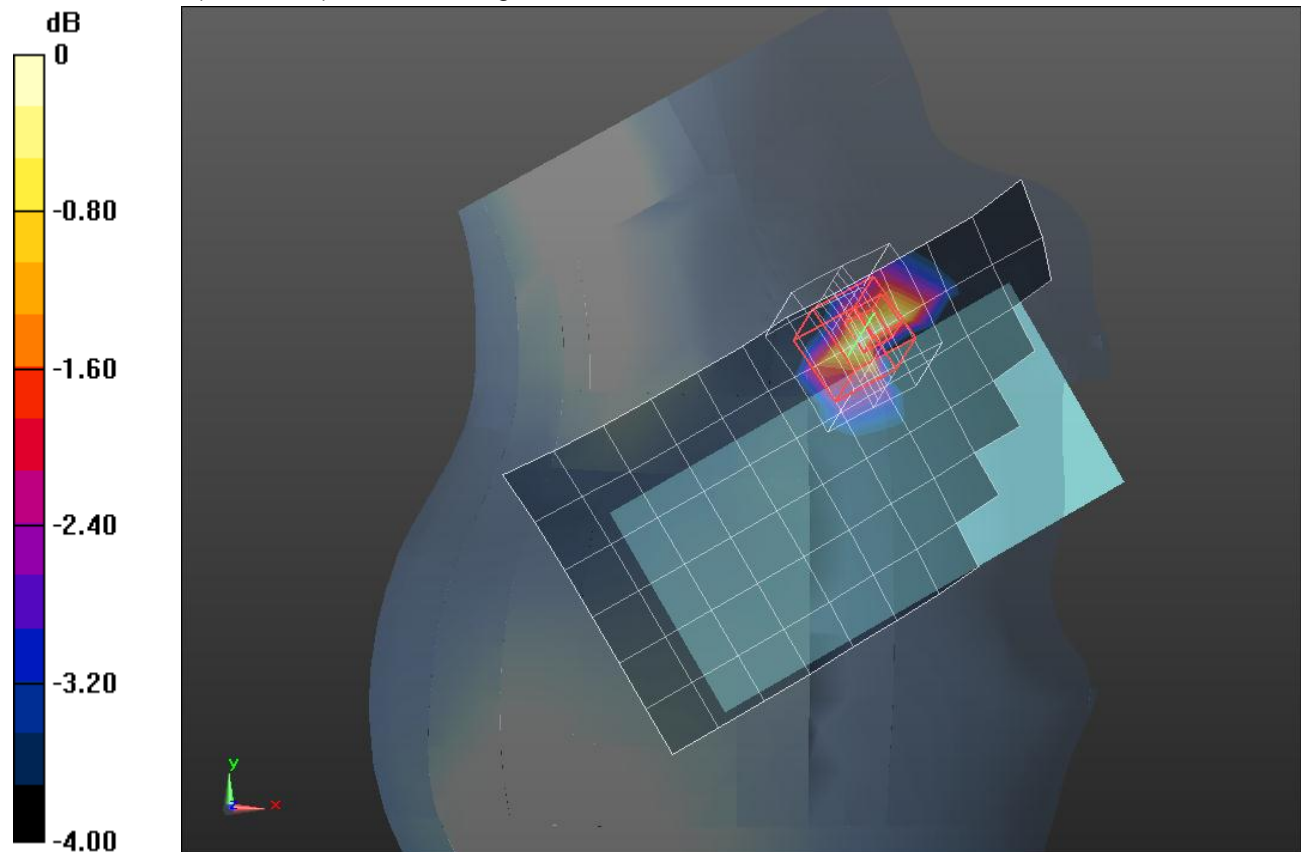
Reference Value = 6.836 V/m; Power Drift = 0.12 dB

Peak SAR (extrapolated) = 0.0570 W/kg

SAR(1 g) = 0.035 W/kg; SAR(10 g) = 0.021 W/kg

[Info: Interpolated medium parameters used for SAR evaluation.](#)

Maximum value of SAR (measured) = 0.0435 W/kg



0 dB = 0.0435 W/kg = -13.62 dBW/kg

GSM 850

Frequency: 836.6 MHz; Duty Cycle: 1:2.60016; Room Ambient Temperature: 24.0°C; Liquid Temperature: 23.0°C
 Medium parameters used (interpolated): $f = 836.6$ MHz; $\sigma = 0.935$ S/m; $\epsilon_r = 41.962$; $\rho = 1000$ kg/m³

DASY5 Configuration:

- Area Scan Setting: Find Secondary Maximum Within: 2.0 dB and with a peak SAR value greater than 0.0012W/kg
- Electronics: DAE4 Sn1439; Calibrated: 5/14/2014
- Probe: EX3DV4 - SN3991; ConvF(9.94, 9.94, 9.94); Calibrated: 5/16/2014;
- Sensor-Surface: 2.5mm (Mechanical Surface Detection (Locations From Previous Scan Used)), Sensor-Surface: 2.5mm (Mechanical Surface Detection)
- Phantom: TWIN SAM v5.0; Type: QD000P40CD; Serial: TP:1829

RHS/Touch_GPRS 3 slots_ch 190/Area Scan (7x12x1): Measurement grid: dx=15mm, dy=15mm

[Info: Interpolated medium parameters used for SAR evaluation.](#)

Maximum value of SAR (measured) = 0.0585 W/kg

RHS/Touch_GPRS 3 slots_ch 190/Zoom Scan (5x5x7)/Cube 0: Measurement grid: dx=8mm, dy=8mm, dz=5mm

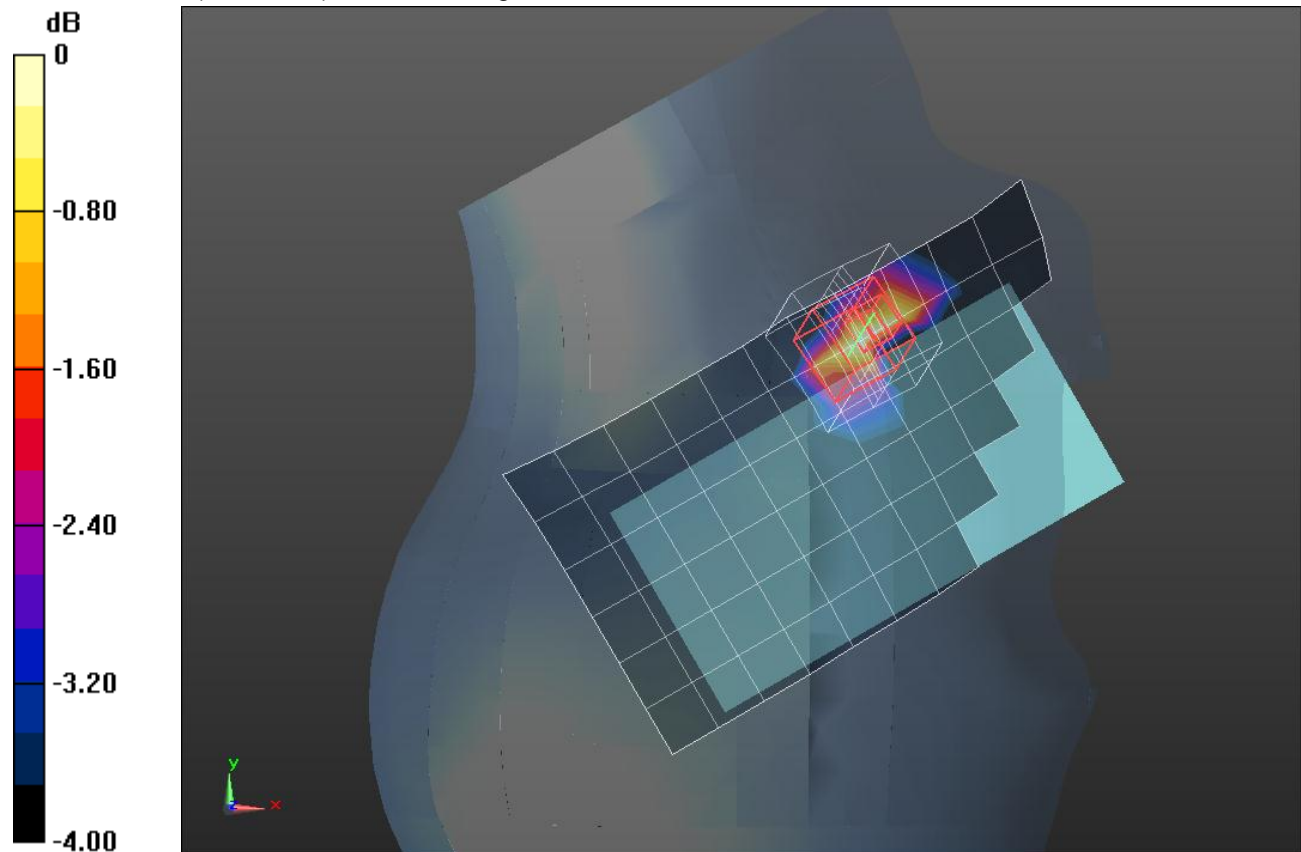
Reference Value = 7.832 V/m; Power Drift = 0.17 dB

Peak SAR (extrapolated) = 0.0750 W/kg

SAR(1 g) = 0.046 W/kg; SAR(10 g) = 0.028 W/kg

[Info: Interpolated medium parameters used for SAR evaluation.](#)

Maximum value of SAR (measured) = 0.0569 W/kg



0 dB = 0.0569 W/kg = -12.45 dBW/kg

GSM 850

Frequency: 836.6 MHz; Duty Cycle: 1:8.00018; Room Ambient Temperature: 24.0°C; Liquid Temperature: 23.0°C
 Medium parameters used (interpolated): $f = 836.6$ MHz; $\sigma = 1.02$ S/m; $\epsilon_r = 52.768$; $\rho = 1000$ kg/m³

DASY5 Configuration:

- Area Scan Setting: Find Secondary Maximum Within: 2.0 dB and with a peak SAR value greater than 0.0012W/kg
- Electronics: DAE4 Sn1439; Calibrated: 5/14/2014
- Probe: EX3DV4 - SN3991; ConvF(9.7, 9.7, 9.7); Calibrated: 5/16/2014;
- Sensor-Surface: 2.5mm (Mechanical Surface Detection (Locations From Previous Scan Used)), Sensor-Surface: 2.5mm (Mechanical Surface Detection)
- Phantom: ELI v5.0 (B); Type: QDOVA002AA; Serial: TP:1257

Rear/GSM Voice_ch 190/Area Scan (9x12x1): Measurement grid: dx=15mm, dy=15mm

[Info: Interpolated medium parameters used for SAR evaluation.](#)

Maximum value of SAR (measured) = 0.108 W/kg

Rear/GSM Voice_ch 190/Zoom Scan (5x5x7)/Cube 0: Measurement grid: dx=8mm, dy=8mm, dz=5mm

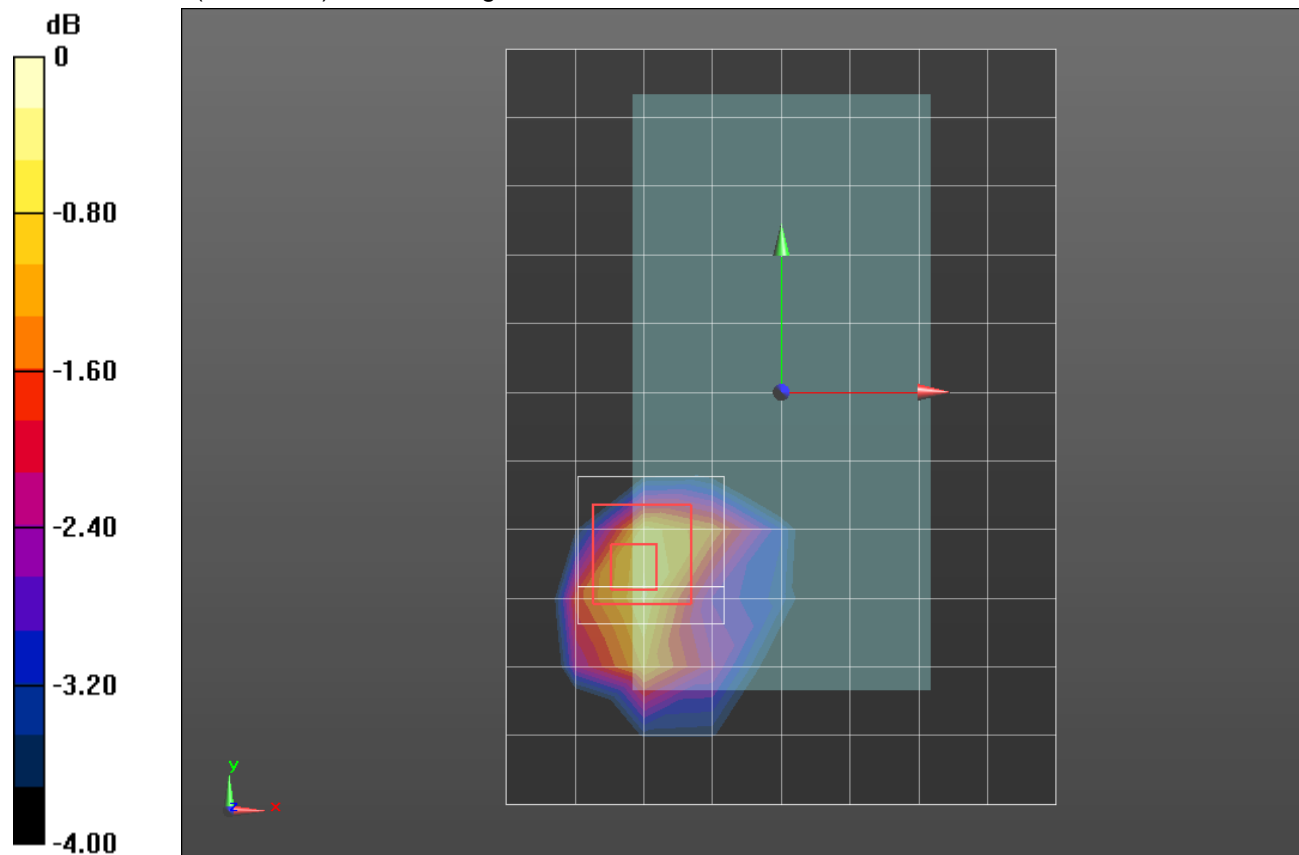
Reference Value = 10.24 V/m; Power Drift = 0.07 dB

Peak SAR (extrapolated) = 0.175 W/kg

SAR(1 g) = 0.094 W/kg; SAR(10 g) = 0.053 W/kg

[Info: Interpolated medium parameters used for SAR evaluation.](#)

Maximum value of SAR (measured) = 0.121 W/kg



0 dB = 0.121 W/kg = -9.17 dBW/kg

GSM 850

Frequency: 836.6 MHz; Duty Cycle: 1:2.60016; Room Ambient Temperature: 24.0°C; Liquid Temperature: 23.0°C
 Medium parameters used (interpolated): $f = 836.6$ MHz; $\sigma = 1.02$ S/m; $\epsilon_r = 52.768$; $\rho = 1000$ kg/m³

DASY5 Configuration:

- Area Scan Setting: Find Secondary Maximum Within: 2.0 dB and with a peak SAR value greater than 0.0012W/kg
- Electronics: DAE4 Sn1439; Calibrated: 5/14/2014
- Probe: EX3DV4 - SN3991; ConvF(9.7, 9.7, 9.7); Calibrated: 5/16/2014;
- Sensor-Surface: 2.5mm (Mechanical Surface Detection (Locations From Previous Scan Used)), Sensor-Surface: 2.5mm (Mechanical Surface Detection)
- Phantom: ELI v5.0 (B); Type: QDOVA002AA; Serial: TP:1257

Rear/GPRS 3 slots_ch 190/Area Scan (9x12x1): Measurement grid: dx=15mm, dy=15mm

[Info: Interpolated medium parameters used for SAR evaluation.](#)

Maximum value of SAR (measured) = 0.136 W/kg

Rear/GPRS 3 slots_ch 190/Zoom Scan (5x5x7)/Cube 0: Measurement grid: dx=8mm, dy=8mm, dz=5mm

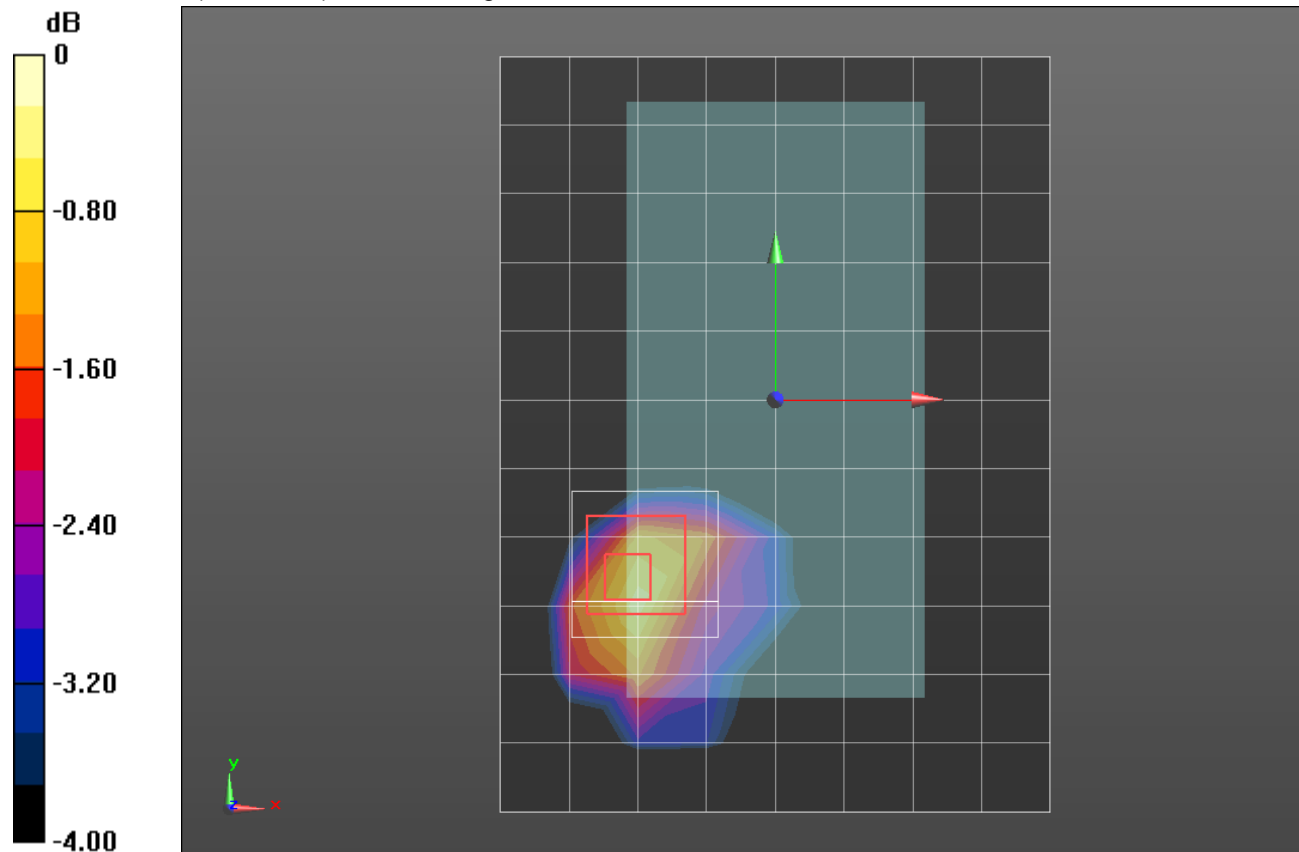
Reference Value = 11.56 V/m; Power Drift = 0.04 dB

Peak SAR (extrapolated) = 0.211 W/kg

SAR(1 g) = 0.115 W/kg; SAR(10 g) = 0.065 W/kg

[Info: Interpolated medium parameters used for SAR evaluation.](#)

Maximum value of SAR (measured) = 0.148 W/kg



0 dB = 0.148 W/kg = -8.30 dBW/kg

GSM 1900

Frequency: 1880 MHz; Duty Cycle: 1:8.00018; Room Ambient Temperature: 24.0°C; Liquid Temperature: 23.0°C
 Medium parameters used: $f = 1880 \text{ MHz}$; $\sigma = 1.389 \text{ S/m}$; $\epsilon_r = 39.366$; $\rho = 1000 \text{ kg/m}^3$

DASY5 Configuration:

- Area Scan Setting: Find Secondary Maximum Within: 2.0 dB and with a peak SAR value greater than 0.0012W/kg
- Electronics: DAE4 Sn1439; Calibrated: 5/14/2014
- Probe: EX3DV4 - SN3991; ConvF(8.55, 8.55, 8.55); Calibrated: 5/16/2014;
- Sensor-Surface: 2.5mm (Mechanical Surface Detection)
- Phantom: TWIN SAM v5.0; Type: QD000P40CD; Serial: TP:1829

RHS/Touch_GSM Voice_ch 661/Area Scan (7x12x1): Measurement grid: dx=15mm, dy=15mm
 Maximum value of SAR (measured) = 0.0613 W/kg

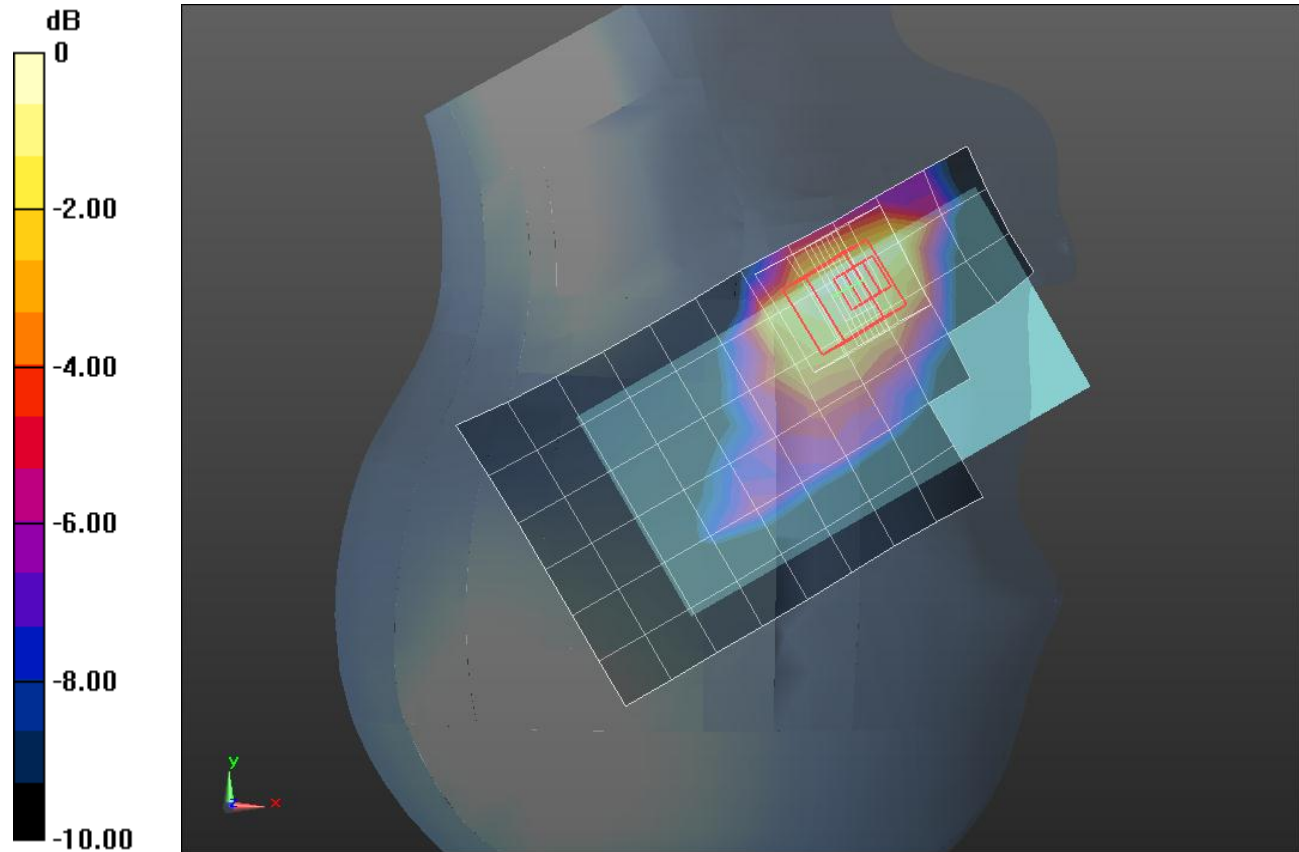
RHS/Touch_GSM Voice_ch 661/Zoom Scan (5x5x7)/Cube 0: Measurement grid: dx=8mm, dy=8mm, dz=5mm

Reference Value = 6.930 V/m; Power Drift = 0.04 dB

Peak SAR (extrapolated) = 0.0820 W/kg

SAR(1 g) = 0.053 W/kg; SAR(10 g) = 0.032 W/kg

Maximum value of SAR (measured) = 0.0662 W/kg



0 dB = 0.0662 W/kg = -11.79 dBW/kg

GSM 1900

Frequency: 1880 MHz; Duty Cycle: 1:4.00037; Room Ambient Temperature: 24.0°C; Liquid Temperature: 23.0°C
 Medium parameters used: $f = 1880$ MHz; $\sigma = 1.389$ S/m; $\epsilon_r = 39.366$; $\rho = 1000$ kg/m³
 DASY5 Configuration:

- Area Scan Setting: Find Secondary Maximum Within: 2.0 dB and with a peak SAR value greater than 0.0012W/kg
- Electronics: DAE4 Sn1439; Calibrated: 5/14/2014
- Probe: EX3DV4 - SN3991; ConvF(8.55, 8.55, 8.55); Calibrated: 5/16/2014;
- Sensor-Surface: 2.5mm (Mechanical Surface Detection)
- Phantom: TWIN SAM v5.0; Type: QD000P40CD; Serial: TP:1829

RHS/Touch_GPRS_2 Slot ch 661/Area Scan (7x12x1): Measurement grid: dx=15mm, dy=15mm
 Maximum value of SAR (measured) = 0.0694 W/kg

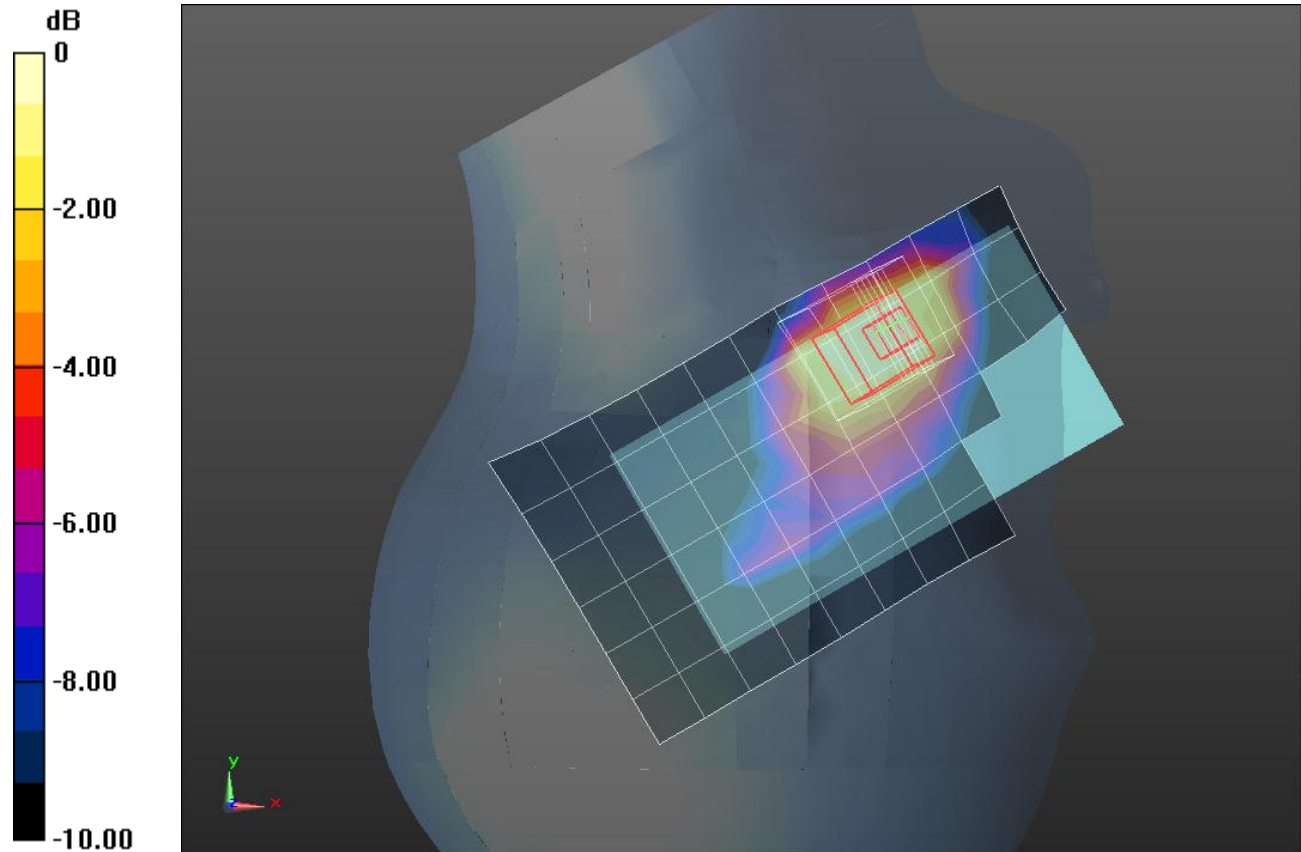
RHS/Touch_GPRS_2 Slot ch 661/Zoom Scan (5x5x7)/Cube 0: Measurement grid: dx=8mm, dy=8mm, dz=5mm

Reference Value = 7.262 V/m; Power Drift = 0.08 dB

Peak SAR (extrapolated) = 0.104 W/kg

SAR(1 g) = 0.067 W/kg; SAR(10 g) = 0.041 W/kg

Maximum value of SAR (measured) = 0.0823 W/kg



0 dB = 0.0823 W/kg = -10.85 dBW/kg

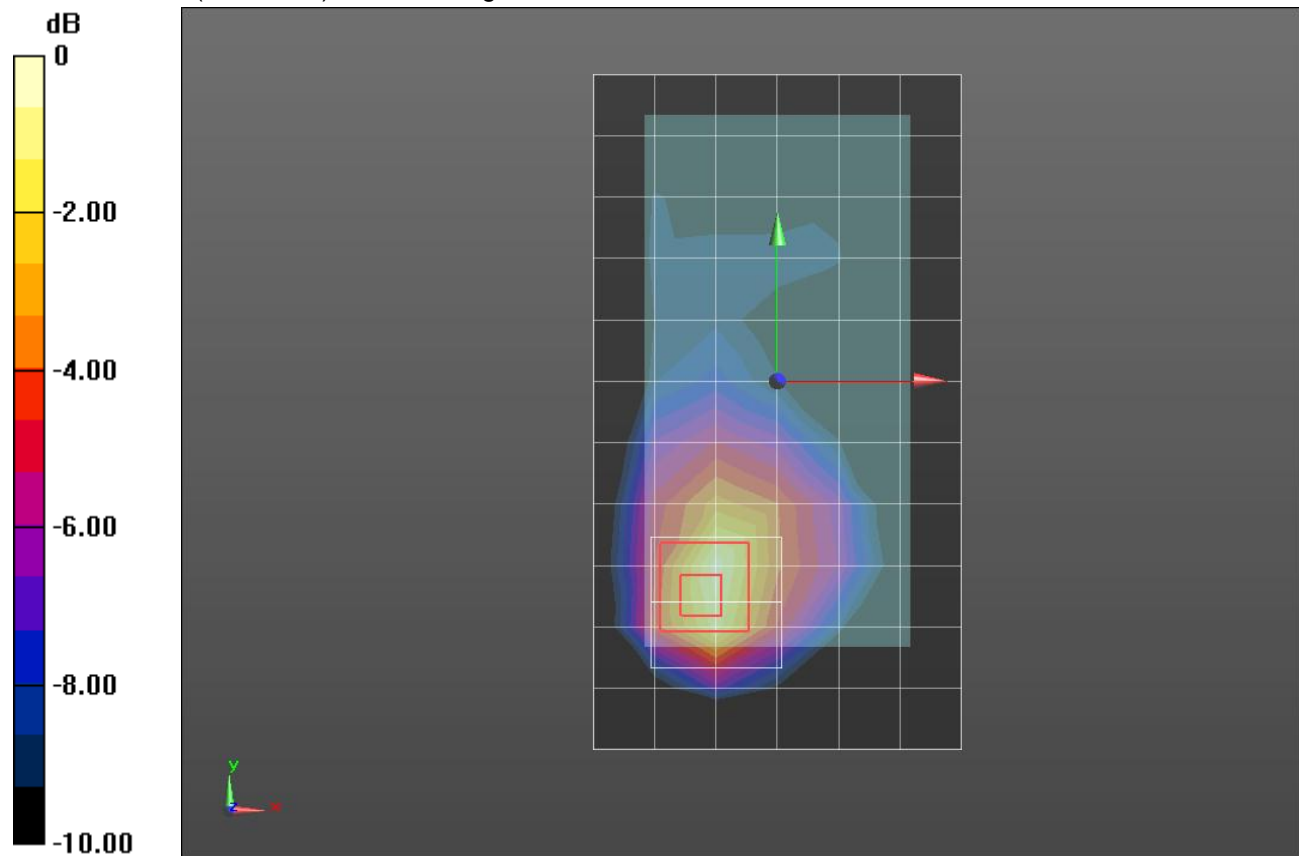
GSM 1900

Frequency: 1880 MHz; Duty Cycle: 1:8.00018; Room Ambient Temperature: 24.0°C; Liquid Temperature: 23.0°C
 Medium parameters used: $f = 1880 \text{ MHz}$; $\sigma = 1.486 \text{ S/m}$; $\epsilon_r = 51.379$; $\rho = 1000 \text{ kg/m}^3$
 DASY5 Configuration:

- Area Scan Setting: Find Secondary Maximum Within: 2.0 dB and with a peak SAR value greater than 0.0012W/kg
- Electronics: DAE4 Sn1439; Calibrated: 5/14/2014
- Probe: EX3DV4 - SN3991; ConvF(7.65, 7.65, 7.65); Calibrated: 5/16/2014;
- Sensor-Surface: 2.5mm (Mechanical Surface Detection)
- Phantom: ELI v5.0 (A); Type: QDOVA001BB; Serial: 1213

Rear/GSM_Voice ch 661/Area Scan (7x12x1): Measurement grid: dx=15mm, dy=15mm
 Maximum value of SAR (measured) = 0.192 W/kg

Rear/GSM_Voice ch 661/Zoom Scan (5x5x7)/Cube 0: Measurement grid: dx=8mm, dy=8mm, dz=5mm
 Reference Value = 11.47 V/m; Power Drift = -0.01 dB
 Peak SAR (extrapolated) = 0.312 W/kg
SAR(1 g) = 0.169 W/kg; SAR(10 g) = 0.083 W/kg
 Maximum value of SAR (measured) = 0.204 W/kg



0 dB = 0.204 W/kg = -6.90 dBW/kg

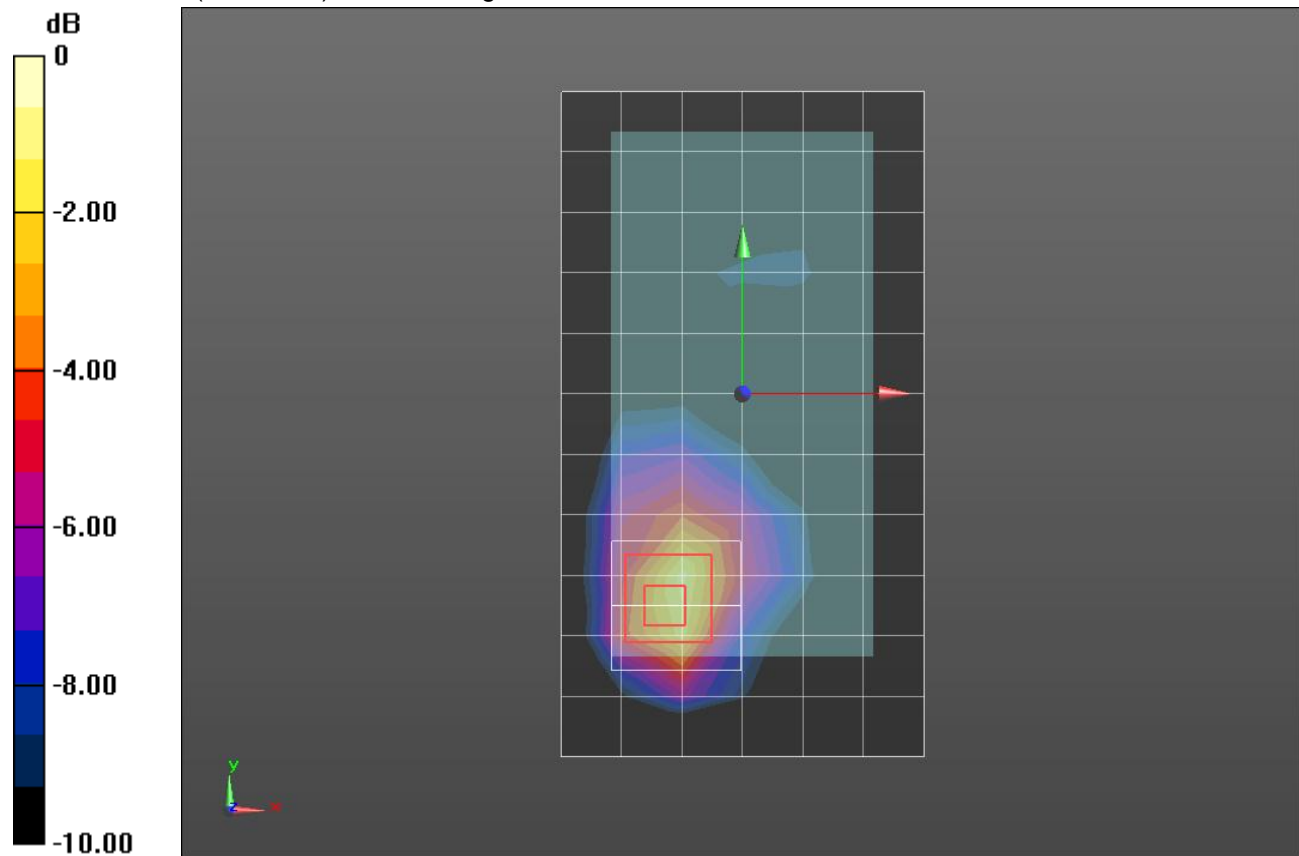
GSM 1900

Frequency: 1880 MHz; Duty Cycle: 1:4.00037; Room Ambient Temperature: 24.0°C; Liquid Temperature: 23.0°C
 Medium parameters used: $f = 1880 \text{ MHz}$; $\sigma = 1.486 \text{ S/m}$; $\epsilon_r = 51.379$; $\rho = 1000 \text{ kg/m}^3$
 DASY5 Configuration:

- Area Scan Setting: Find Secondary Maximum Within: 2.0 dB and with a peak SAR value greater than 0.0012W/kg
- Electronics: DAE4 Sn1439; Calibrated: 5/14/2014
- Probe: EX3DV4 - SN3991; ConvF(7.65, 7.65, 7.65); Calibrated: 5/16/2014;
- Sensor-Surface: 2.5mm (Mechanical Surface Detection)
- Phantom: ELI v5.0 (A); Type: QDOVA001BB; Serial: 1213

Rear/GPRS_2 Slot ch 661/Area Scan (7x12x1): Measurement grid: $dx=15\text{mm}$, $dy=15\text{mm}$
 Maximum value of SAR (measured) = 0.211 W/kg

Rear/GPRS_2 Slot ch 661/Zoom Scan (5x5x7)/Cube 0: Measurement grid: $dx=8\text{mm}$, $dy=8\text{mm}$, $dz=5\text{mm}$
 Reference Value = 12.12 V/m; Power Drift = -0.00 dB
 Peak SAR (extrapolated) = 0.384 W/kg
SAR(1 g) = 0.206 W/kg; SAR(10 g) = 0.098 W/kg
 Maximum value of SAR (measured) = 0.268 W/kg



0 dB = 0.268 W/kg = -5.72 dBW/kg

W-CDMA Band V

Frequency: 846.6 MHz; Duty Cycle: 1:1; Room Ambient Temperature: 24.0°C; Liquid Temperature: 23.0°C
 Medium parameters used (interpolated): $f = 846.6$ MHz; $\sigma = 0.946$ S/m; $\epsilon_r = 41.831$; $\rho = 1000$ kg/m³

DASY5 Configuration:

- Area Scan Setting: Find Secondary Maximum Within: 2.0 dB and with a peak SAR value greater than 0.0012W/kg
- Electronics: DAE4 Sn1439; Calibrated: 5/14/2014
- Probe: EX3DV4 - SN3991; ConvF(9.94, 9.94, 9.94); Calibrated: 5/16/2014;
- Sensor-Surface: 2.5mm (Mechanical Surface Detection)
- Phantom: TWIN SAM v5.0; Type: QD000P40CD; Serial: TP:1829

RHS/Touch_RMC Rel 99 ch 4233/Area Scan (7x12x1): Measurement grid: dx=15mm, dy=15mm

[Info: Interpolated medium parameters used for SAR evaluation.](#)

Maximum value of SAR (measured) = 0.0296 W/kg

RHS/Touch_RMC Rel 99 ch 4233/Zoom Scan (5x5x7)/Cube 0: Measurement grid: dx=8mm, dy=8mm, dz=5mm

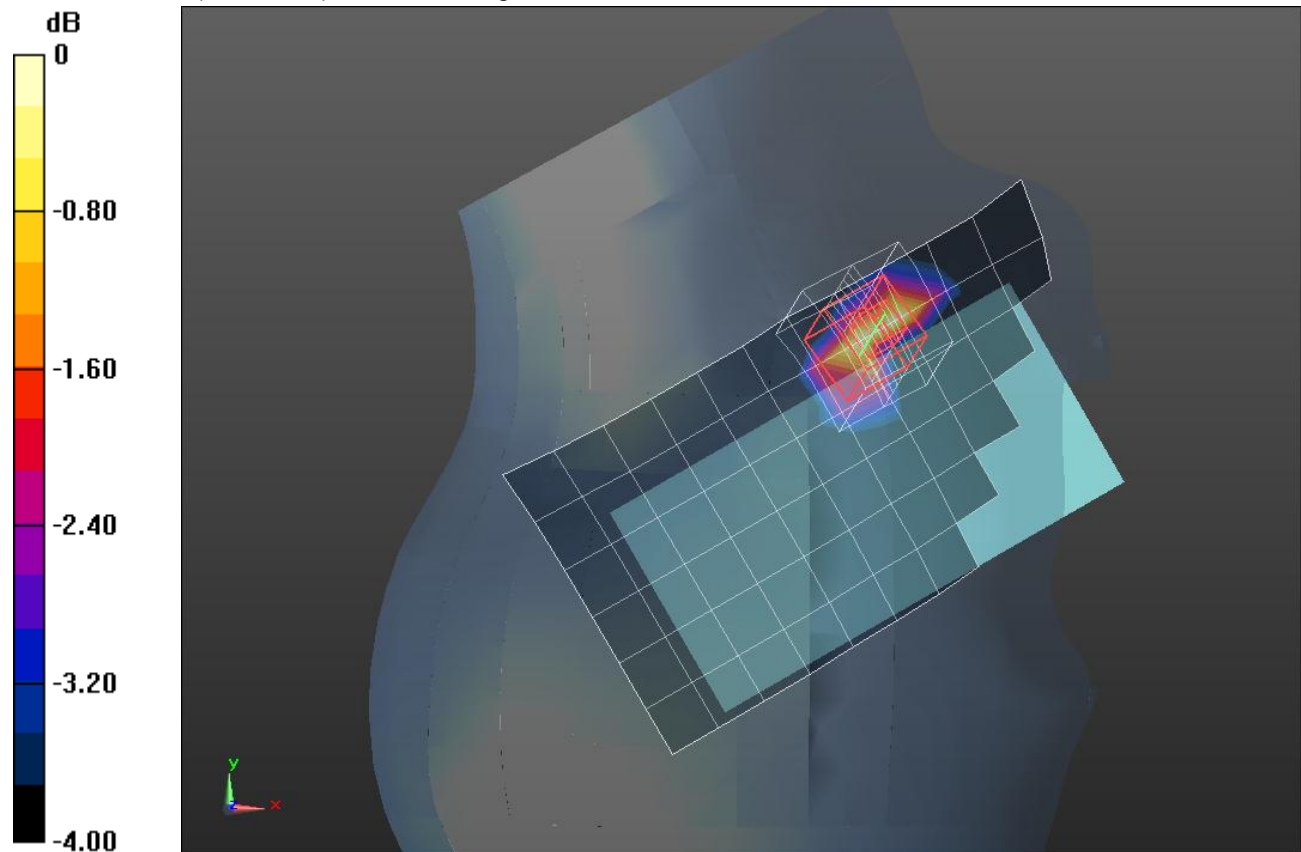
Reference Value = 5.772 V/m; Power Drift = 0.12 dB

Peak SAR (extrapolated) = 0.0400 W/kg

SAR(1 g) = 0.025 W/kg; SAR(10 g) = 0.015 W/kg

[Info: Interpolated medium parameters used for SAR evaluation.](#)

Maximum value of SAR (measured) = 0.0307 W/kg



0 dB = 0.0307 W/kg = -15.13 dBW/kg

W-CDMA Band V

Frequency: 846.6 MHz; Duty Cycle: 1:1; Room Ambient Temperature: 24.0°C; Liquid Temperature: 23.0°C
 Medium parameters used (interpolated): $f = 846.6$ MHz; $\sigma = 1.029$ S/m; $\epsilon_r = 52.673$; $\rho = 1000$ kg/m³

DASY5 Configuration:

- Area Scan Setting: Find Secondary Maximum Within: 2.0 dB and with a peak SAR value greater than 0.0012W/kg
- Electronics: DAE4 Sn1439; Calibrated: 5/14/2014
- Probe: EX3DV4 - SN3991; ConvF(9.7, 9.7, 9.7); Calibrated: 5/16/2014;
- Sensor-Surface: 2.5mm (Mechanical Surface Detection)
- Phantom: ELI v5.0 (B); Type: QDOVA002AA; Serial: TP:1257

Rear/RMC Rel 99 ch 4233/Area Scan (8x12x1): Measurement grid: dx=15mm, dy=15mm

[Info: Interpolated medium parameters used for SAR evaluation.](#)

Maximum value of SAR (measured) = 0.0756 W/kg

Rear/RMC Rel 99 ch 4233/Zoom Scan (5x5x7)/Cube 0: Measurement grid: dx=8mm, dy=8mm, dz=5mm

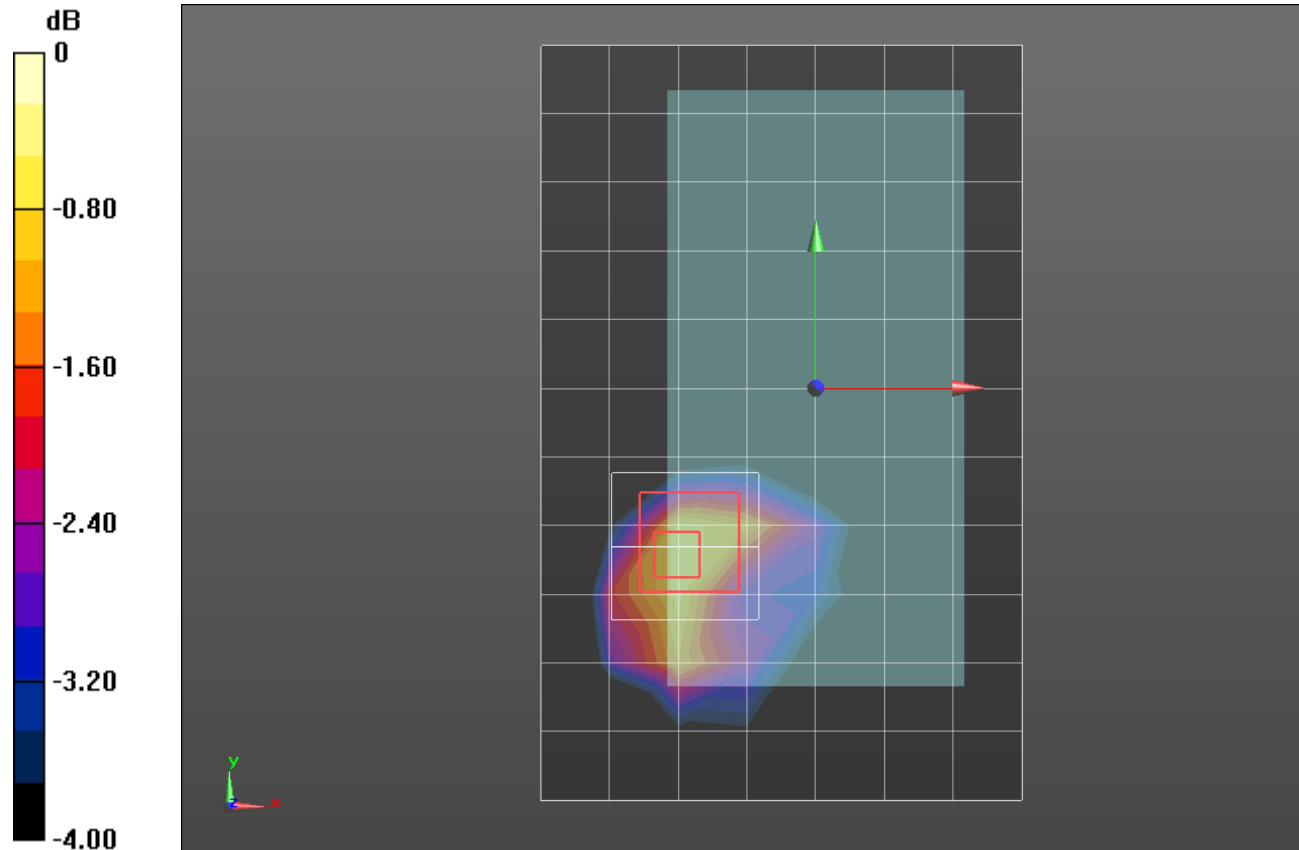
Reference Value = 8.658 V/m; Power Drift = 0.15 dB

Peak SAR (extrapolated) = 0.125 W/kg

SAR(1 g) = 0.068 W/kg; SAR(10 g) = 0.039 W/kg

[Info: Interpolated medium parameters used for SAR evaluation.](#)

Maximum value of SAR (measured) = 0.0879 W/kg



0 dB = 0.0879 W/kg = -10.56 dBW/kg

W-CDMA Band II

Frequency: 1880 MHz; Duty Cycle: 1:1; Room Ambient Temperature: 24.0°C; Liquid Temperature: 23.0°C

Medium parameters used: $f = 1880$ MHz; $\sigma = 1.389$ S/m; $\epsilon_r = 39.366$; $\rho = 1000$ kg/m³

DASY5 Configuration:

- Area Scan Setting: Find Secondary Maximum Within: 2.0 dB and with a peak SAR value greater than 0.0012W/kg
- Electronics: DAE4 Sn1439; Calibrated: 5/14/2014
- Probe: EX3DV4 - SN3991; ConvF(8.55, 8.55, 8.55); Calibrated: 5/16/2014;
- Sensor-Surface: 2.5mm (Mechanical Surface Detection)
- Phantom: TWIN SAM v5.0; Type: QD000P40CD; Serial: TP:1829

RHS/Touch_RMC Rel 99 ch 9400/Area Scan (7x12x1): Measurement grid: dx=15mm, dy=15mm

Maximum value of SAR (measured) = 0.114 W/kg

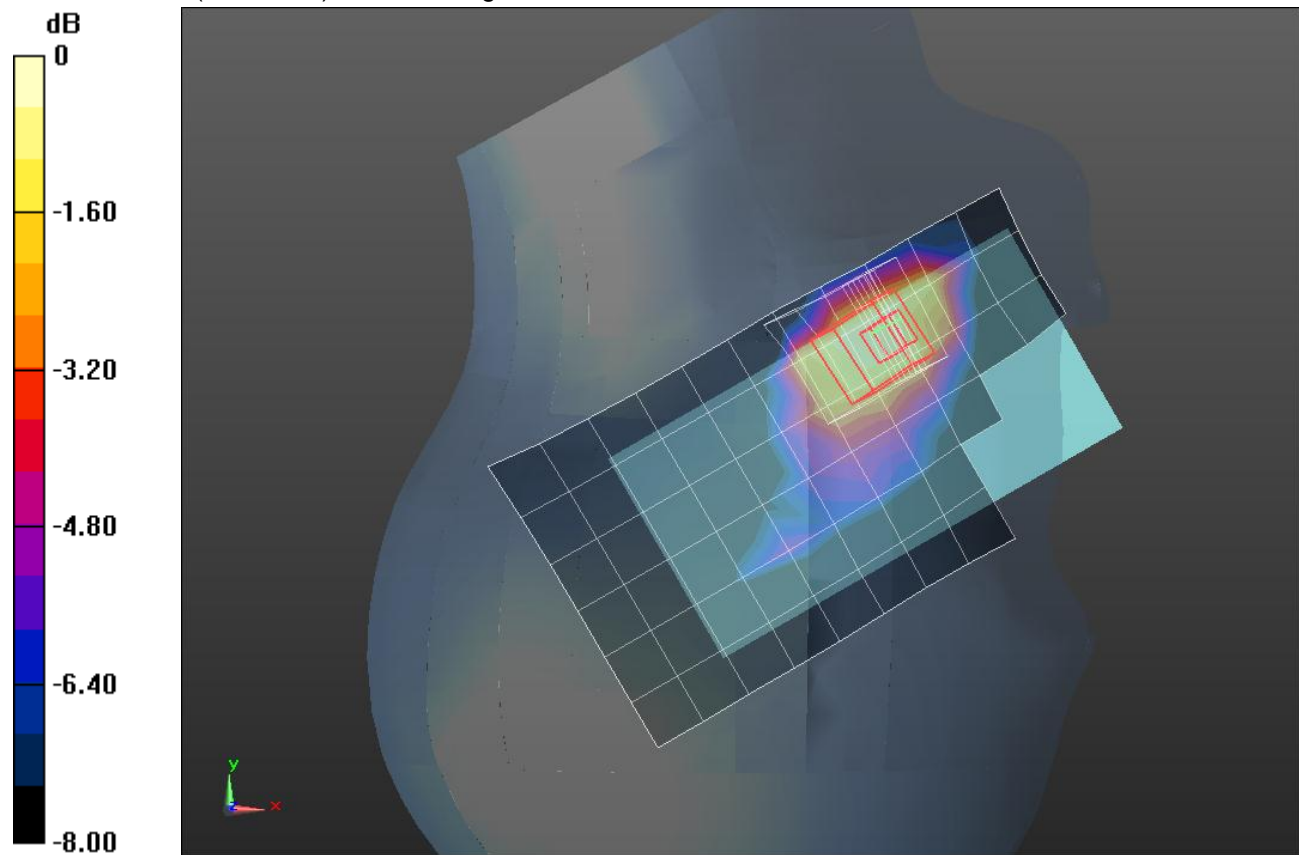
RHS/Touch_RMC Rel 99 ch 9400/Zoom Scan (5x5x7)/Cube 0: Measurement grid: dx=8mm, dy=8mm, dz=5mm

Reference Value = 9.360 V/m; Power Drift = 0.03 dB

Peak SAR (extrapolated) = 0.170 W/kg

SAR(1 g) = 0.109 W/kg; SAR(10 g) = 0.066 W/kg

Maximum value of SAR (measured) = 0.133 W/kg



0 dB = 0.133 W/kg = -8.76 dBW/kg

W-CDMA Band II

Frequency: 1880 MHz; Duty Cycle: 1:1; Room Ambient Temperature: 24.0°C; Liquid Temperature: 23.0°C

Medium parameters used: $f = 1880$ MHz; $\sigma = 1.486$ S/m; $\epsilon_r = 51.379$; $\rho = 1000$ kg/m³

DASY5 Configuration:

- Area Scan Setting: Find Secondary Maximum Within: 2.0 dB and with a peak SAR value greater than 0.0012W/kg
- Electronics: DAE4 Sn1439; Calibrated: 5/14/2014
- Probe: EX3DV4 - SN3991; ConvF(7.65, 7.65, 7.65); Calibrated: 5/16/2014;
- Sensor-Surface: 2.5mm (Mechanical Surface Detection)
- Phantom: ELI v5.0 (A); Type: QDOVA001BB; Serial: 1213

Rear/RMC Rel 99 ch 9400/Area Scan (7x12x1): Measurement grid: dx=15mm, dy=15mm

Maximum value of SAR (measured) = 0.323 W/kg

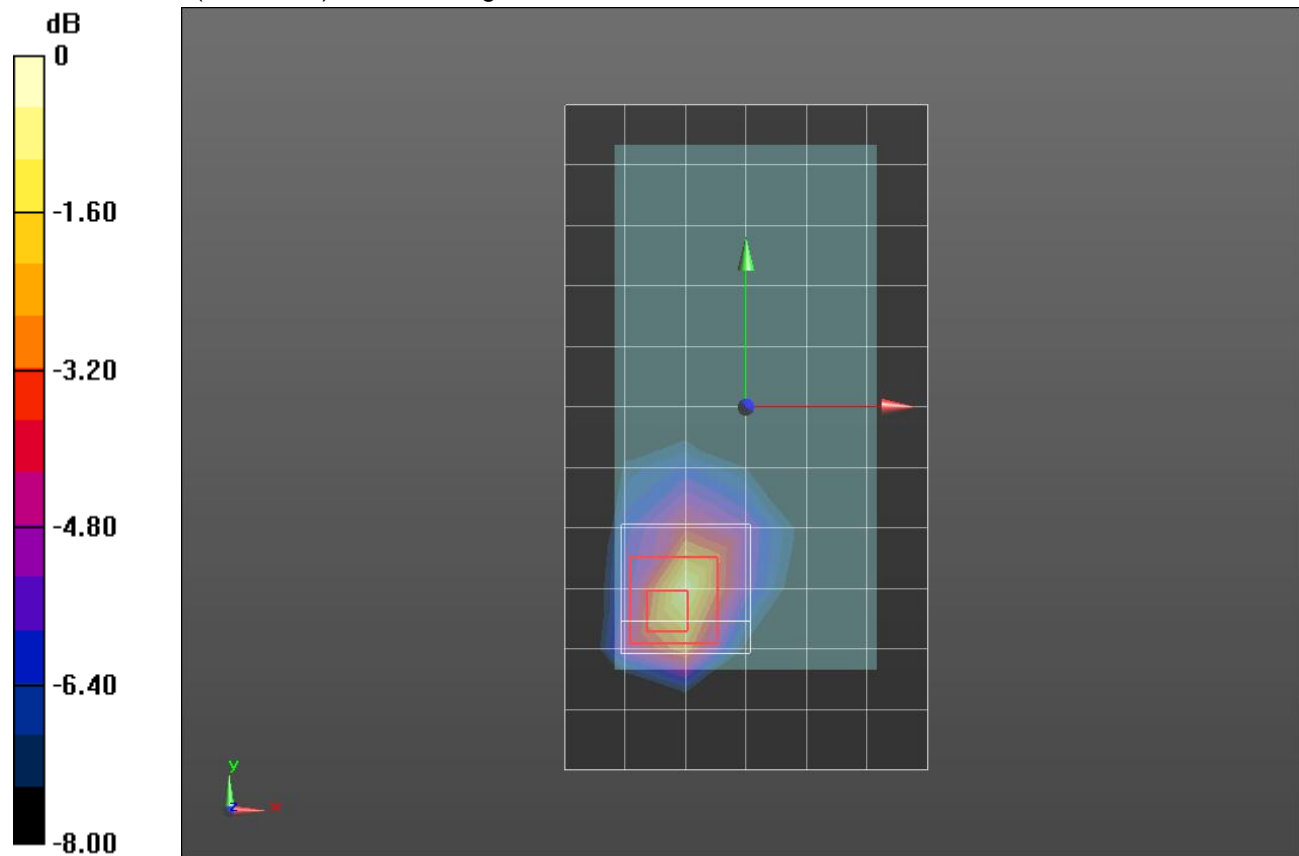
Rear/RMC Rel 99 ch 9400/Zoom Scan (5x5x7)/Cube 0: Measurement grid: dx=8mm, dy=8mm, dz=5mm

Reference Value = 14.85 V/m; Power Drift = 0.05 dB

Peak SAR (extrapolated) = 0.561 W/kg

SAR(1 g) = 0.289 W/kg; SAR(10 g) = 0.133 W/kg

Maximum value of SAR (measured) = 0.371 W/kg



0 dB = 0.371 W/kg = -4.31 dBW/kg

LTE Band 41

Frequency: 2593 MHz; Duty Cycle: 1:1.59956; Room Ambient Temperature: 24.0°C; Liquid Temperature: 23.0°C
 Medium parameters used (interpolated): $f = 2593$ MHz; $\sigma = 2.027$ S/m; $\epsilon_r = 37.941$; $\rho = 1000$ kg/m³
 DASY5 Configuration:

- Area Scan Setting: Find Secondary Maximum Within: 2.0 dB and with a peak SAR value greater than 0.0012W/kg
- Electronics: DAE4 Sn1359; Calibrated: 2/17/2014
- Probe: EX3DV3 - SN3531; ConvF(7.46, 7.46, 7.46); Calibrated: 11/21/2013;
- Sensor-Surface: 2.5mm (Mechanical Surface Detection)
- Phantom: SAM with CRP; Type: SAM;

RHS/Touch_QPSK RB 1/0 ch 40620/Area Scan (9x15x1): Measurement grid: dx=12mm, dy=12mm

[Info: Interpolated medium parameters used for SAR evaluation.](#)

Maximum value of SAR (measured) = 0.0265 W/kg

RHS/Touch_QPSK RB 1/0 ch 40620/Zoom Scan (7x8x7)/Cube 0: Measurement grid: dx=5mm, dy=5mm, dz=5mm

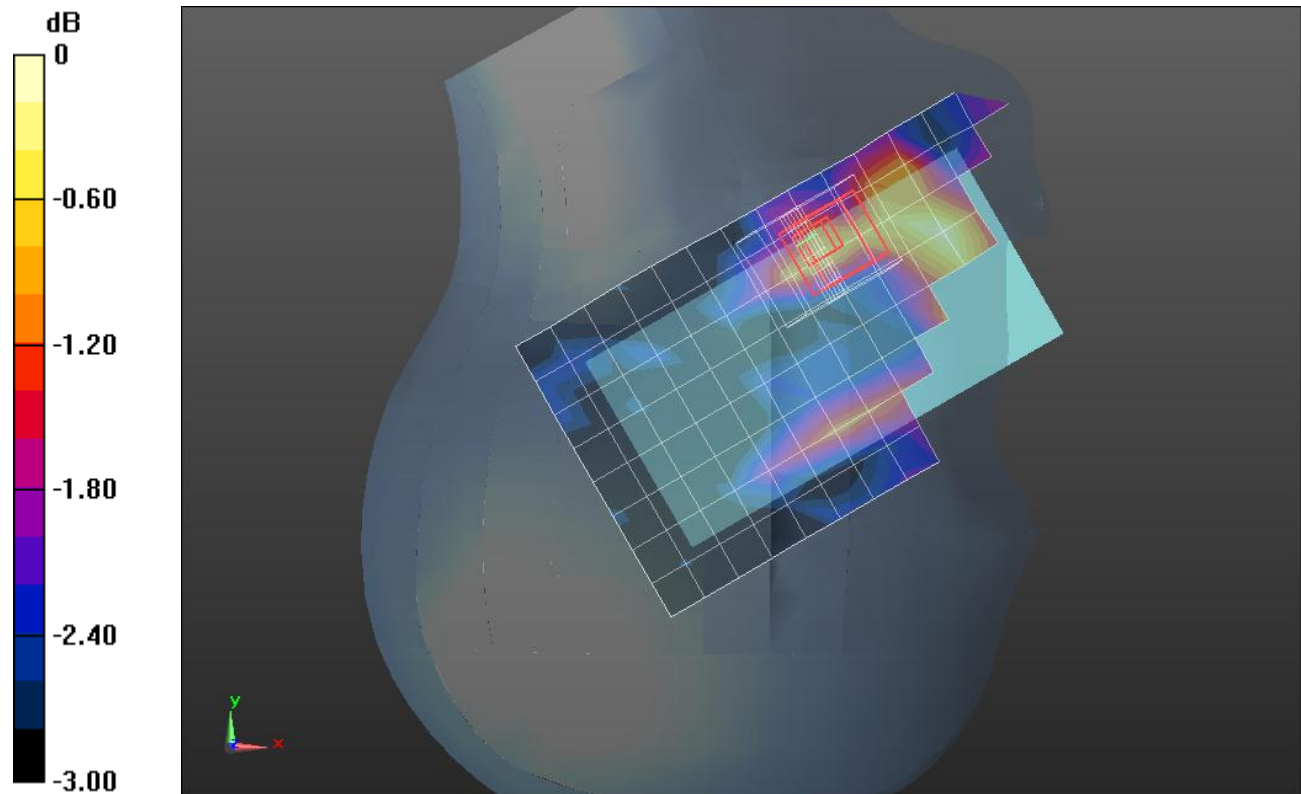
Reference Value = 3.502 V/m; Power Drift = -0.09 dB

Peak SAR (extrapolated) = 0.0300 W/kg

SAR(1 g) = 0.022 W/kg; SAR(10 g) = 0.019 W/kg

[Info: Interpolated medium parameters used for SAR evaluation.](#)

Maximum value of SAR (measured) = 0.0270 W/kg



0 dB = 0.0270 W/kg = -15.69 dBW/kg

LTE Band 41

Frequency: 2593 MHz; Duty Cycle: 1:1.59956; Room Ambient Temperature: 24.0°C; Liquid Temperature: 23.0°C
 Medium parameters used (interpolated): $f = 2593$ MHz; $\sigma = 2.192$ S/m; $\epsilon_r = 50.251$; $\rho = 1000$ kg/m³
 DASY5 Configuration:

- Area Scan Setting: Find Secondary Maximum Within: 2.0 dB and with a peak SAR value greater than 0.0012W/kg
- Electronics: DAE4 Sn1359; Calibrated: 2/17/2014
- Probe: EX3DV3 - SN3531; ConvF(7.12, 7.12, 7.12); Calibrated: 11/21/2013;
- Sensor-Surface: 2.5mm (Mechanical Surface Detection)
- Phantom: ELI B v4.0; Type: QDOVA002AA; Serial: 1196

Front/QPSK RB 1/0 ch 40620/Area Scan (9x14x1): Measurement grid: dx=12mm, dy=12mm

[Info: Interpolated medium parameters used for SAR evaluation.](#)

Maximum value of SAR (measured) = 0.0766 W/kg

Front/QPSK RB 1/0 ch 40620/Zoom Scan (7x7x7)/Cube 0: Measurement grid: dx=5mm, dy=5mm, dz=5mm

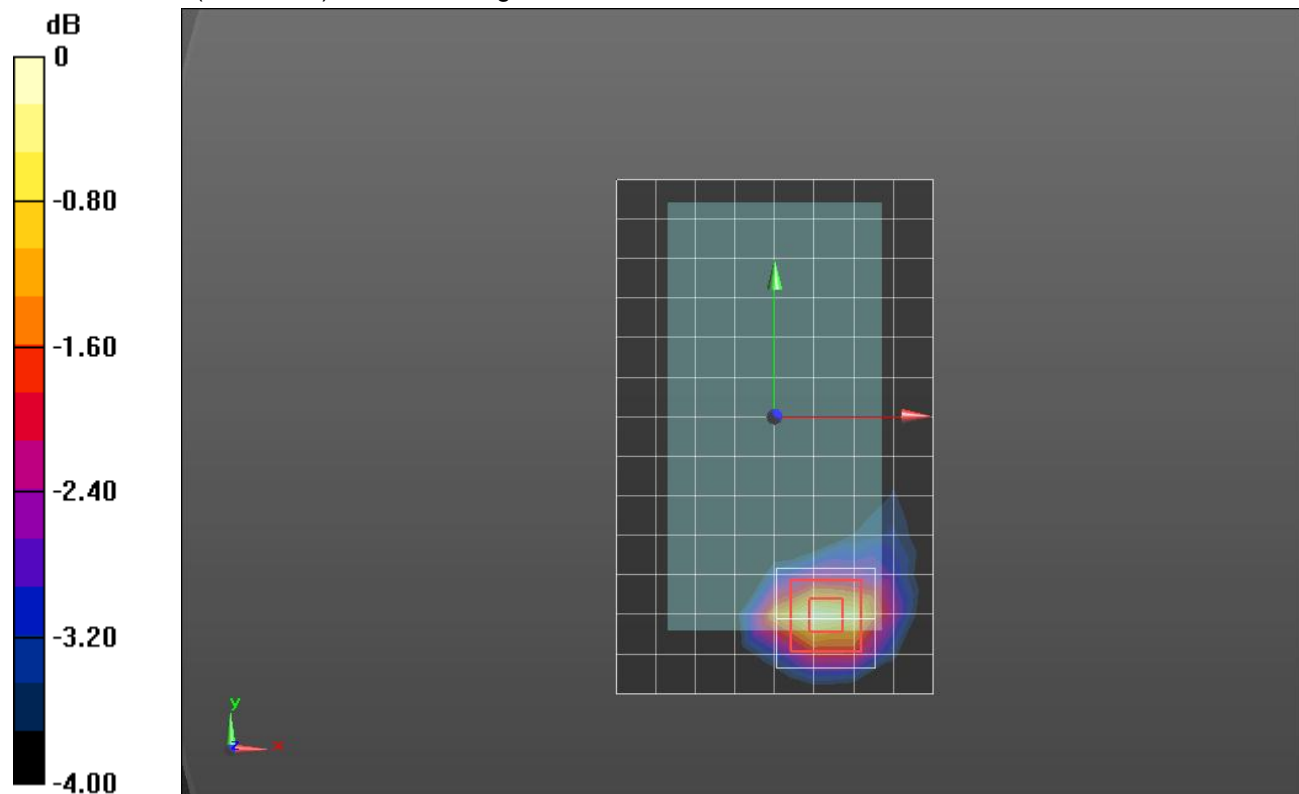
Reference Value = 5.694 V/m; Power Drift = -0.01 dB

Peak SAR (extrapolated) = 0.0920 W/kg

SAR(1 g) = 0.064 W/kg; SAR(10 g) = 0.044 W/kg

[Info: Interpolated medium parameters used for SAR evaluation.](#)

Maximum value of SAR (measured) = 0.0773 W/kg



0 dB = 0.0773 W/kg = -11.12 dBW/kg

Wi-Fi 2.4GHz

Frequency: 2462 MHz; Duty Cycle: 1:1; Room Ambient Temperature: 24.0°C; Liquid Temperature: 23.0°C
 Medium parameters used (interpolated): $f = 2462 \text{ MHz}$; $\sigma = 1.862 \text{ S/m}$; $\epsilon_r = 39.064$; $\rho = 1000 \text{ kg/m}^3$
 DASY5 Configuration:

- Area Scan Setting: Find Secondary Maximum Within: 2.0 dB and with a peak SAR value greater than 0.0012W/kg
- Electronics: DAE3 Sn427; Calibrated: 1/21/2014
- Probe: EX3DV4 - SN3902; ConvF(7.29, 7.29, 7.29); Calibrated: 5/19/2014;
- Sensor-Surface: 2.5mm (Mechanical Surface Detection)
- Phantom: SAM; Type: QD000P40CD; Serial: TP 1751

LHS/Touch_802.11b_ch 11/Area Scan (10x14x1): Measurement grid: dx=12mm, dy=12mm

[Info: Interpolated medium parameters used for SAR evaluation.](#)

Maximum value of SAR (measured) = 0.582 W/kg

LHS/Touch_802.11b_ch 11/Zoom Scan (7x7x7)/Cube 0: Measurement grid: dx=5mm, dy=5mm, dz=5mm

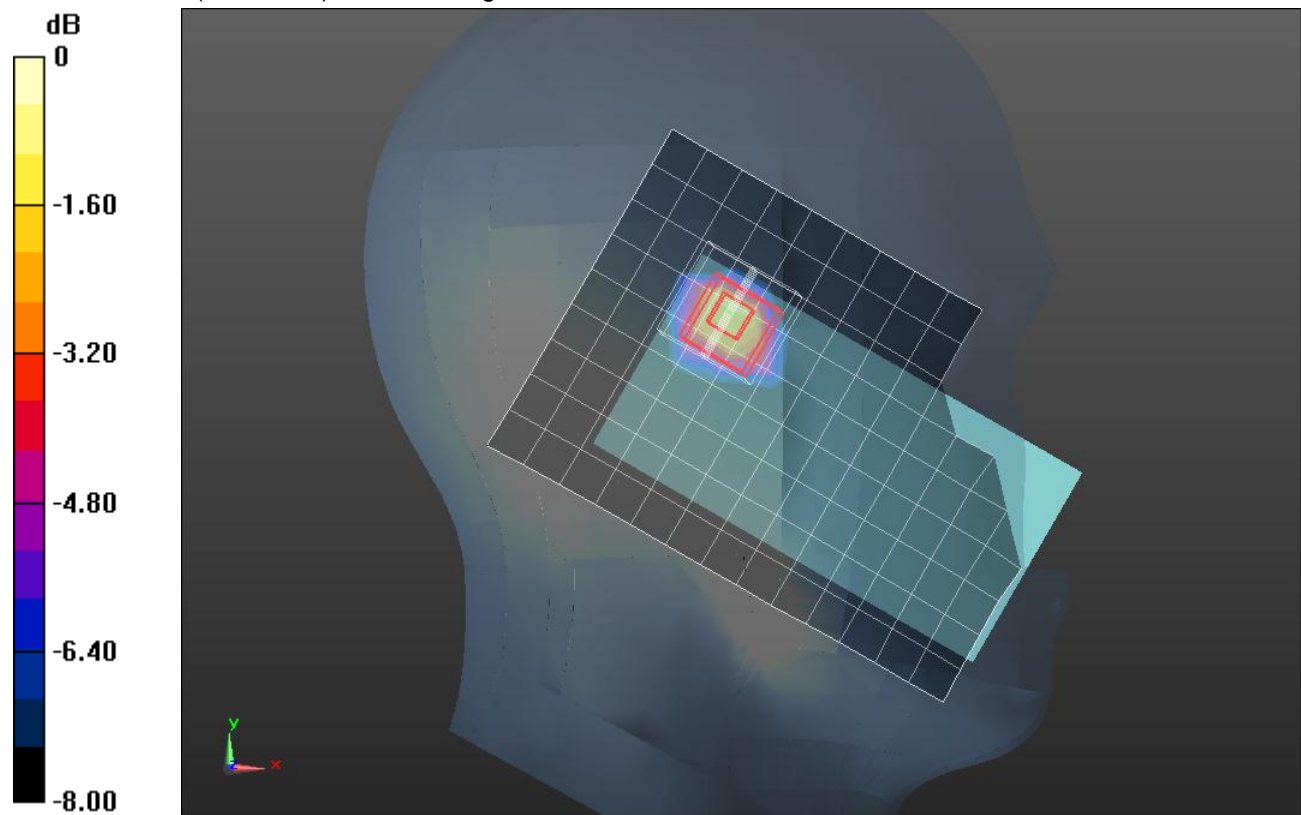
Reference Value = 17.016 V/m; Power Drift = 0.10 dB

Peak SAR (extrapolated) = 1.39 W/kg

SAR(1 g) = 0.571 W/kg; SAR(10 g) = 0.242 W/kg

[Info: Interpolated medium parameters used for SAR evaluation.](#)

Maximum value of SAR (measured) = 0.809 W/kg



0 dB = 0.809 W/kg = -0.92 dBW/kg

Wi-Fi 2.4GHz

Frequency: 2462 MHz; Duty Cycle: 1:1; Room Ambient Temperature: 24.0°C; Liquid Temperature: 23.0°C
 Medium parameters used (interpolated): $f = 2462 \text{ MHz}$; $\sigma = 2.06 \text{ S/m}$; $\epsilon_r = 52.397$; $\rho = 1000 \text{ kg/m}^3$

DASY5 Configuration:

- Area Scan Setting: Find Secondary Maximum Within: 2.0 dB and with a peak SAR value greater than 0.0012W/kg
- Electronics: DAE3 Sn427; Calibrated: 1/21/2014
- Probe: EX3DV4 - SN3902; ConvF(7.35, 7.35, 7.35); Calibrated: 5/19/2014;
- Sensor-Surface: 2.5mm (Mechanical Surface Detection)
- Phantom: ELI-A v5.0; Type: QDOVA002AA; Serial: TP 1194

Front/802.11b_ch 11/Area Scan (9x15x1): Measurement grid: dx=12mm, dy=12mm

[Info: Interpolated medium parameters used for SAR evaluation.](#)

Maximum value of SAR (measured) = 0.0380 W/kg

Front/802.11b_ch 11/Zoom Scan (7x7x7)/Cube 0: Measurement grid: dx=5mm, dy=5mm, dz=5mm

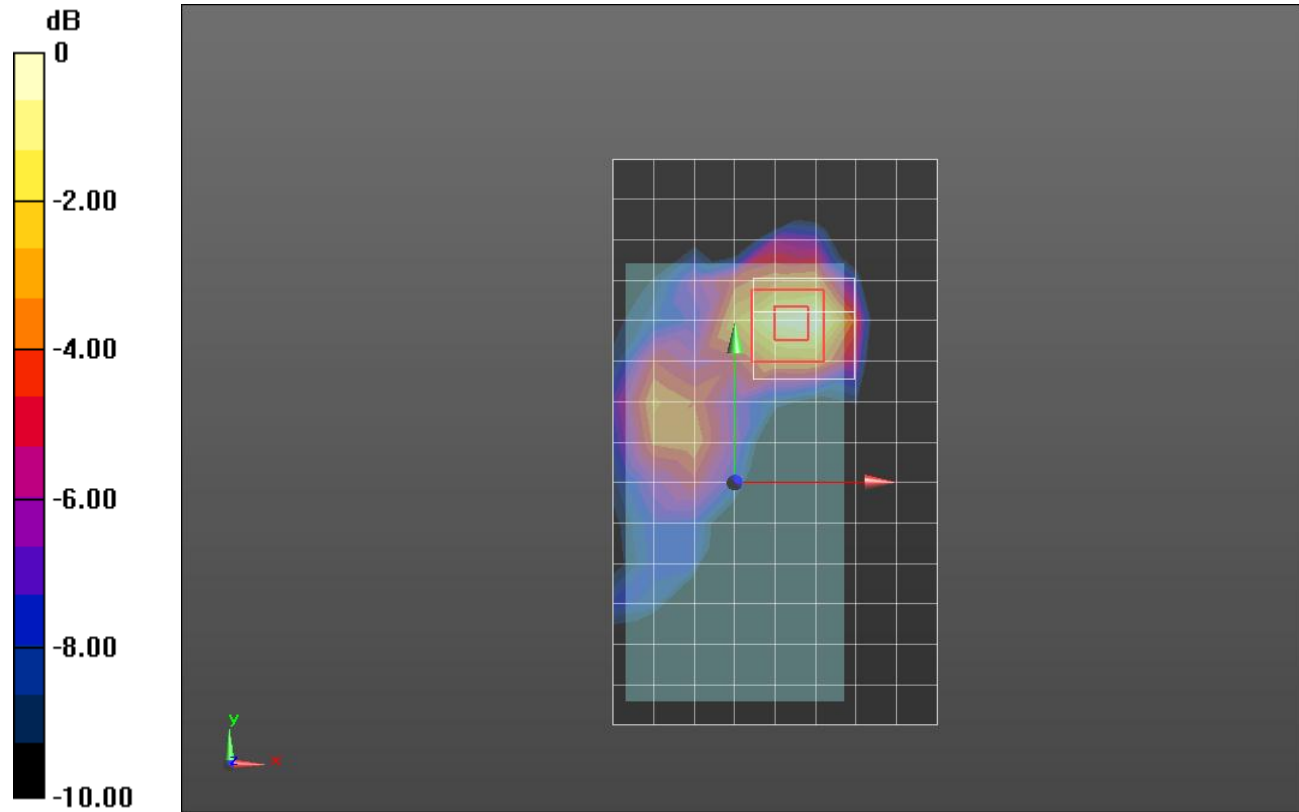
Reference Value = 4.260 V/m; Power Drift = -0.14 dB

Peak SAR (extrapolated) = 0.0950 W/kg

SAR(1 g) = 0.028 W/kg; SAR(10 g) = 0.013 W/kg

[Info: Interpolated medium parameters used for SAR evaluation.](#)

Maximum value of SAR (measured) = 0.0368 W/kg



0 dB = 0.0368 W/kg = -14.34 dBW/kg