

SAMSUNG FCC ID : A3LSGHX656 835MHz GSM850 Head SAR

DUT: SGH-X656; Serial: FD-055-M

Program Name: SGH-X656 GSM850 Right (Job No. : FD-055)

Procedure Name: Cheek/Touch, Ch.128, Ant.Intenna, Bat.Standard

Procedure Notes: Meas. Ambient Temp(celsius)-23.1, Tissue Temp(celsius)-22.5; Test Date-20/May/2006 [OET Bulletin 65-Supplement C, July 2001]

Communication System: GSM 850; Frequency: 824.2 MHz;Duty Cycle: 1:8.3

Medium parameters used: $f = 824.2$ MHz; $\sigma = 0.9$ mho/m; $\epsilon_r = 40.3$; $\rho = 1000$ kg/m³

Phantom section: Right Section

DASY4 Configuration:

- Probe: ES3DV2 - SN3017; ConvF(6.14, 6.14, 6.14); Calibrated: 2005-09-20
- Sensor-Surface: 4mm (Mechanical Surface Detection)
- Electronics: DAE4 Sn670; Calibrated: 2006-03-21
- Phantom: PHANTOM #1; Type: SAM; Serial: TP-1143
- Measurement SW: DASY4, V4.6 Build 23; Postprocessing SW: SEMCAD, V1.8 Build 160

Cheek/Touch, Ch.128, Ant.Intenna, Bat.Standard/Zoom Scan (5x5x7)/Cube 0:

Measurement grid: dx=8mm, dy=8mm, dz=5mm

Reference Value = 10.3 V/m; Power Drift = -0.198 dB

Peak SAR (extrapolated) = 1.77 W/kg

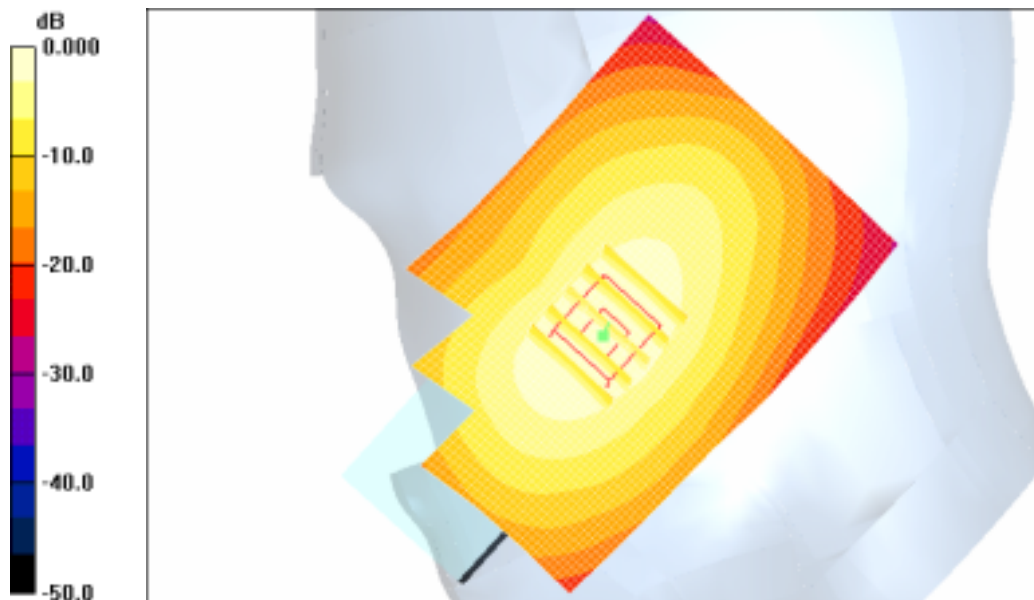
SAR(1 g) = 1.12 mW/g

Maximum value of SAR (measured) = 1.22 mW/g

Cheek/Touch, Ch.128, Ant.Intenna, Bat.Standard/Area Scan (51x71x1): Measurement

grid: dx=20mm, dy=20mm

Maximum value of SAR (interpolated) = 1.14 mW/g



0 dB = 1.14mW/g

SAMSUNG FCC ID : A3LSGHX656 835MHz GSM850 Head SAR

DUT: SGH-X656; Serial: FD-055-M

Program Name: SGH-X656 GSM850 Right (Job No. : FD-055)

Procedure Name: Ear/Tilt, Ch.190, Ant.Intenna, Bat.Standard

Procedure Notes: Meas. Ambient Temp(celsius)-23.1, Tissue Temp(celsius)-22.5; Test Date-20/May/2006 [OET Bulletin 65-Supplement C, July 2001]

Communication System: GSM 850; Frequency: 836.6 MHz;Duty Cycle: 1:8.3

Medium parameters used: $f = 836.6$ MHz; $\sigma = 0.9$ mho/m; $\epsilon_r = 40.3$; $\rho = 1000$ kg/m³

Phantom section: Right Section

DASY4 Configuration:

- Probe: ES3DV2 - SN3017; ConvF(6.14, 6.14, 6.14); Calibrated: 2005-09-20
- Sensor-Surface: 4mm (Mechanical Surface Detection)
- Electronics: DAE4 Sn670; Calibrated: 2006-03-21
- Phantom: PHANTOM #1; Type: SAM; Serial: TP-1143
- Measurement SW: DASY4, V4.6 Build 23; Postprocessing SW: SEMCAD, V1.8 Build 160

Ear/Tilt, Ch.190, Ant.Intenna, Bat.Standard/Area Scan (51x71x1): Measurement grid:

$dx=20$ mm, $dy=20$ mm

Maximum value of SAR (interpolated) = 0.247 mW/g

Ear/Tilt, Ch.190, Ant.Intenna, Bat.Standard/Zoom Scan (5x5x7)/Cube 0: Measurement

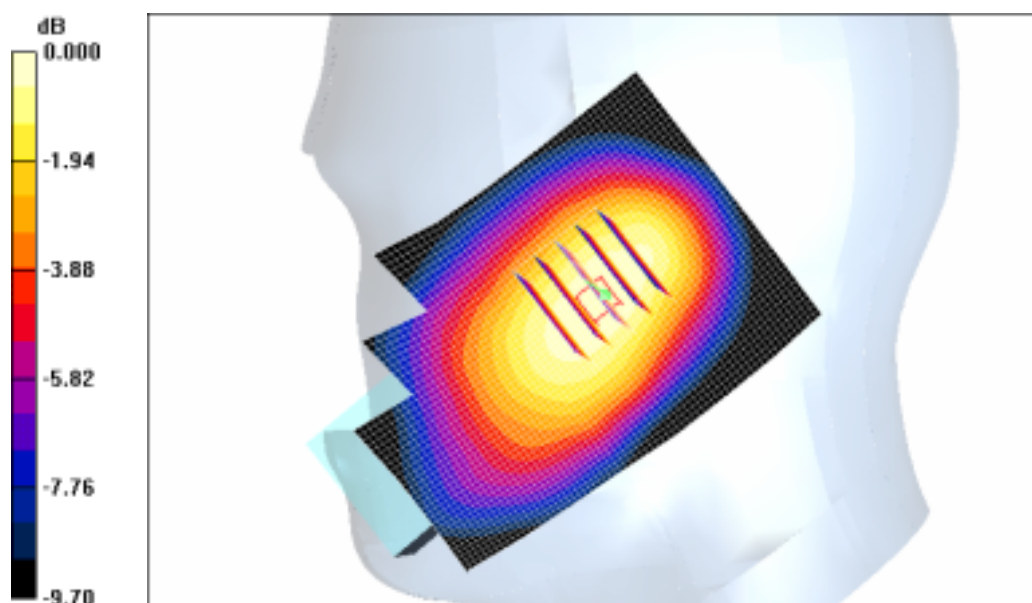
grid: $dx=8$ mm, $dy=8$ mm, $dz=5$ mm

Reference Value = 10.7 V/m; Power Drift = 0.003 dB

Peak SAR (extrapolated) = 0.302 W/kg

SAR(1 g) = 0.232 mW/g

Maximum value of SAR (measured) = 0.244 mW/g



0 dB = 0.244mW/g

SAMSUNG FCC ID : A3LSGHX656 835MHz GSM850 Head SAR

DUT: SGH-X656; Serial: FD-055-M

Program Name: SGH-X656 GSM850 Left (Job No. : FD-055)

Procedure Name: Cheek/Touch, Ch.128, Ant.Intenna, Bat.Standard

Procedure Notes: Meas. Ambient Temp(celsius)-23.1, Tissue Temp(celsius)-22.5; Test Date-20/May/2006 [OET Bulletin 65-Supplement C, July 2001]

Communication System: GSM 850; Frequency: 824.2 MHz;Duty Cycle: 1:8.3

Medium parameters used: $f = 824.2$ MHz; $\sigma = 0.9$ mho/m; $\epsilon_r = 40.3$; $\rho = 1000$ kg/m³

Phantom section: Left Section

DASY4 Configuration:

- Probe: ES3DV2 - SN3017; ConvF(6.14, 6.14, 6.14); Calibrated: 2005-09-20
- Sensor-Surface: 4mm (Mechanical Surface Detection)
- Electronics: DAE4 Sn670; Calibrated: 2006-03-21
- Phantom: PHANTOM #1; Type: SAM; Serial: TP-1143
- Measurement SW: DASY4, V4.6 Build 23; Postprocessing SW: SEMCAD, V1.8 Build 160

Cheek/Touch, Ch.128, Ant.Intenna, Bat.Standard/Area Scan (51x71x1): Measurement grid: dx=20mm, dy=20mm

Maximum value of SAR (interpolated) = 1.08 mW/g

Cheek/Touch, Ch.128, Ant.Intenna, Bat.Standard/Zoom Scan (5x5x7)/Cube 0:

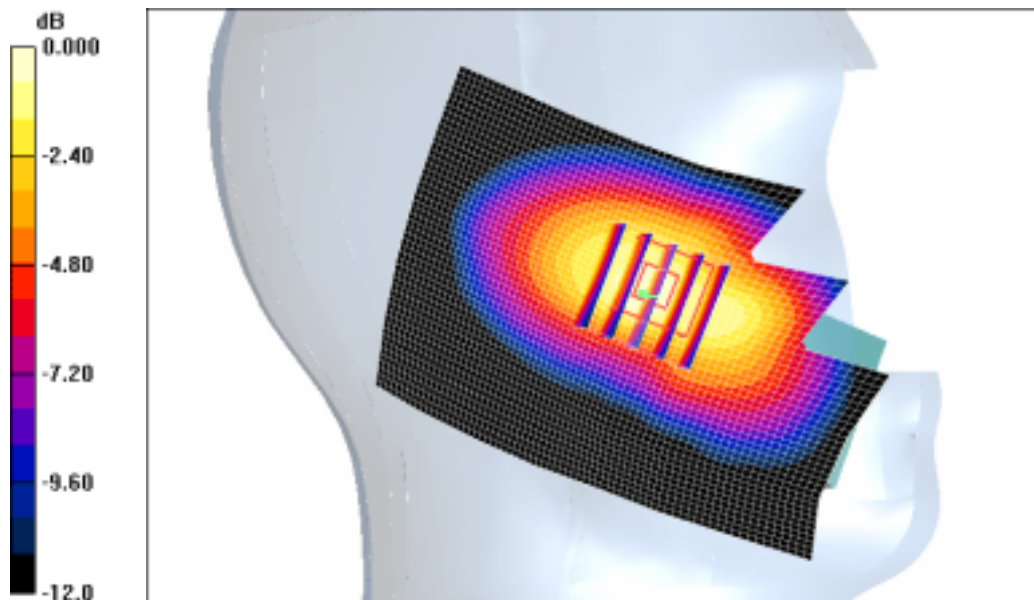
Measurement grid: dx=8mm, dy=8mm, dz=5mm

Reference Value = 9.21 V/m; Power Drift = 0.118 dB

Peak SAR (extrapolated) = 1.61 W/kg

SAR(1 g) = 1.03 mW/g

Maximum value of SAR (measured) = 1.07 mW/g



0 dB = 1.07mW/g

SAMSUNG FCC ID : A3LSGHX656 835MHz GSM850 Head SAR

DUT: SGH-X656; Serial: FD-055-M

Program Name: SGH-X656 GSM850 Left (Job No. : FD-055)

Procedure Name: Ear/Tilt, Ch.190, Ant.Intenna, Bat.Standard

Procedure Notes: Meas. Ambient Temp(celsius)-23.1, Tissue Temp(celsius)-22.5; Test Date-20/May/2006 [OET Bulletin 65-Supplement C, July 2001]

Communication System: GSM 850; Frequency: 836.6 MHz;Duty Cycle: 1:8.3

Medium parameters used: $f = 836.6$ MHz; $\sigma = 0.9$ mho/m; $\epsilon_r = 40.3$; $\rho = 1000$ kg/m³

Phantom section: Left Section

DASY4 Configuration:

- Probe: ES3DV2 - SN3017; ConvF(6.14, 6.14, 6.14); Calibrated: 2005-09-20
- Sensor-Surface: 4mm (Mechanical Surface Detection)
- Electronics: DAE4 Sn670; Calibrated: 2006-03-21
- Phantom: PHANTOM #1; Type: SAM; Serial: TP-1143
- Measurement SW: DASY4, V4.6 Build 23; Postprocessing SW: SEMCAD, V1.8 Build 160

Ear/Tilt, Ch.190, Ant.Intenna, Bat.Standard/Area Scan (51x71x1): Measurement grid:

$dx=20$ mm, $dy=20$ mm

Maximum value of SAR (interpolated) = 0.294 mW/g

Ear/Tilt, Ch.190, Ant.Intenna, Bat.Standard/Zoom Scan (5x5x7)/Cube 0: Measurement

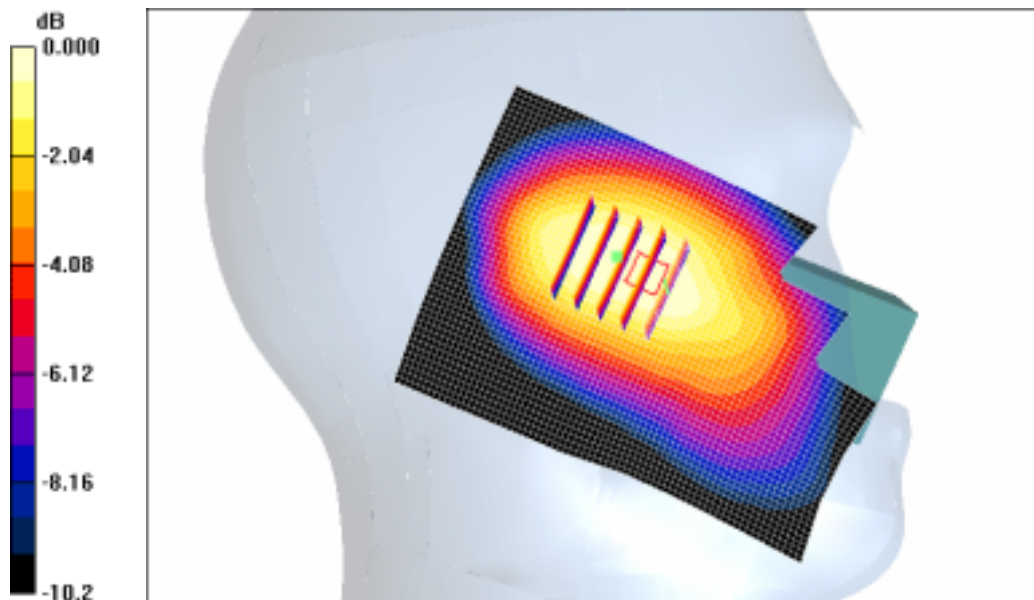
grid: $dx=8$ mm, $dy=8$ mm, $dz=5$ mm

Reference Value = 10.8 V/m; Power Drift = -0.012 dB

Peak SAR (extrapolated) = 0.356 W/kg

SAR(1 g) = 0.269 mW/g

Maximum value of SAR (measured) = 0.283 mW/g



0 dB = 0.283mW/g

SAMSUNG FCC ID : A3LSGHX656 835MHz GPRS850 Body SAR

DUT: SGH-X656(Body); Serial: FD-055-M

Program Name: SGH-X656 GSM850 Body (Job No. : FD-055)

Procedure Name: Body, Ch.128, Ant.Intenna, Bat.Standard

Procedure Notes: Meas.Ambient Temp(celsius)-22.5, Tissue Temp(celsius)-22.3; Test Date-20/May/2006 [OET Bulletin 65-Supplement C, July 2001]

Communication System: GSM 850 (GPRS); Frequency: 824.2 MHz;Duty Cycle: 1:4.15

Medium parameters used: $f = 824.2$ MHz; $\sigma = 0.98$ mho/m; $\epsilon_r = 53.6$; $\rho = 1000$ kg/m³

Phantom section: Flat Section

DASY4 Configuration:

- Probe: ES3DV2 - SN3017; ConvF(6.18, 6.18, 6.18); Calibrated: 2005-09-20
- Sensor-Surface: 4mm (Mechanical Surface Detection)
- Electronics: DAE4 Sn670; Calibrated: 2006-03-21
- Phantom: PHANTOM #2; Type: SAM; Serial: TP-1141
- Measurement SW: DASY4, V4.6 Build 23; Postprocessing SW: SEMCAD, V1.8 Build 160

Body, Ch.128, Ant.Intenna, Bat.Standard 2/Area Scan (51x71x1): Measurement grid:

$dx=20$ mm, $dy=20$ mm

Maximum value of SAR (interpolated) = 0.539 mW/g

Body, Ch.128, Ant.Intenna, Bat.Standard 2/Zoom Scan (5x5x7)/Cube 0: Measurement

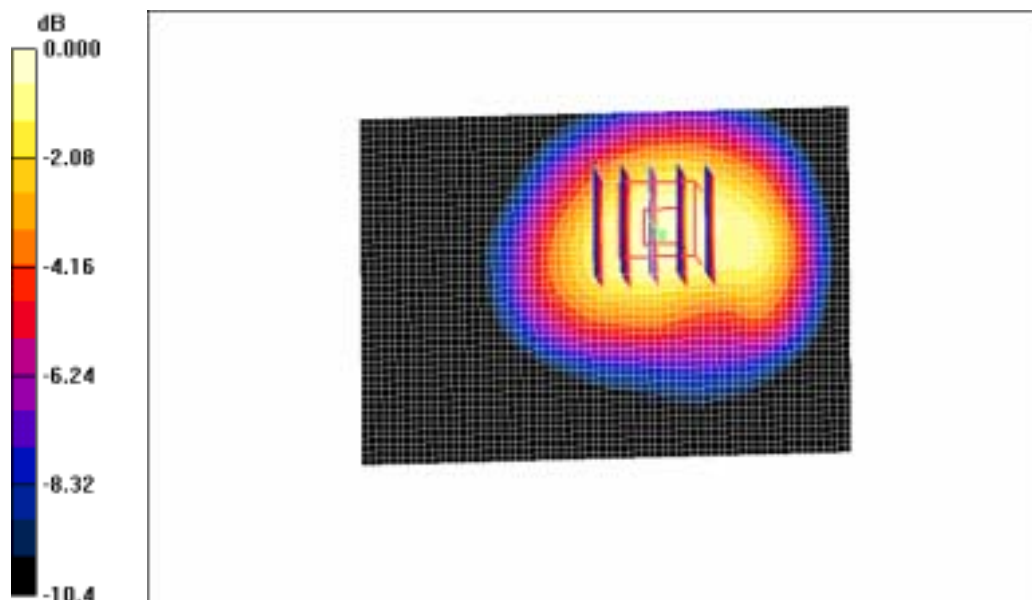
grid: $dx=8$ mm, $dy=8$ mm, $dz=5$ mm

Reference Value = 18.3 V/m; Power Drift = 0.045 dB

Peak SAR (extrapolated) = 0.685 W/kg

SAR(1 g) = 0.488 mW/g

Maximum value of SAR (measured) = 0.524 mW/g



0 dB = 0.524mW/g

SAMSUNG FCC ID : A3LSGHX656 1900MHz GSM1900 Head SAR

DUT: SGH-X656; Serial: FD-055-M

Program Name: SGH-X656 GSM1900 Right (Job No. : FD-055)

Procedure Name: Cheek/Touch, Ch.810, Ant.Intenna, Bat.Standard

Procedure Notes: Meas. Ambient Temp(celsius)-22.7; Tissue Temp(celsius)-21.9; Test Date-20/May/2006[OET Bulletin 65-Supplement C, July 2001]

Communication System: GSM 1900; Frequency: 1909.8 MHz; Duty Cycle: 1:8.3

Medium parameters used: $f = 1909.8$ MHz; $\sigma = 1.42$ mho/m; $\epsilon_r = 39$; $\rho = 1000$ kg/m³

Phantom section: Right Section

DASY4 Configuration:

- Probe: ES3DV2 - SN3017; ConvF(5.02, 5.02, 5.02); Calibrated: 2005-09-20
- Sensor-Surface: 4mm (Mechanical Surface Detection)
- Electronics: DAE4 Sn670; Calibrated: 2006-03-21
- Phantom: PHANTOM #2; Type: SAM; Serial: TP-1141
- Measurement SW: DASY4, V4.6 Build 23; Postprocessing SW: SEMCAD, V1.8 Build 160

Cheek/Touch, Ch.810, Ant.Intenna, Bat.Standard/Area Scan (51x71x1): Measurement grid: dx=20mm, dy=20mm

Maximum value of SAR (interpolated) = 1.45 mW/g

Cheek/Touch, Ch.810, Ant.Intenna, Bat.Standard/Zoom Scan (5x5x7)/Cube 0:

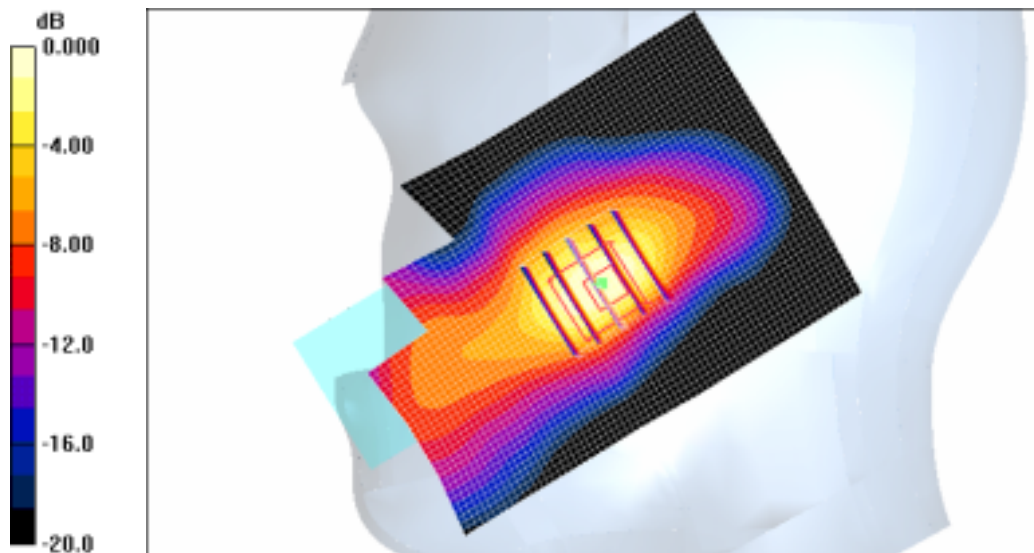
Measurement grid: dx=8mm, dy=8mm, dz=5mm

Reference Value = 4.67 V/m; Power Drift = -0.077 dB

Peak SAR (extrapolated) = 2.17 W/kg

SAR(1 g) = 1.25 mW/g

Maximum value of SAR (measured) = 1.37 mW/g



0 dB = 1.37mW/g

SAMSUNG FCC ID : A3LSGHX656 1900MHz GSM1900 Head SAR

DUT: SGH-X656; Serial: FD-055-M

Program Name: SGH-X656 GSM1900 Right (Job No. : FD-055)

Procedure Name: Ear/Tilt, Ch.661, Ant.Intenna, Bat.Standard

Procedure Notes: Meas. Ambient Temp(celsius)-22.7; Tissue Temp(celsius)-21.9; Test Date-20/May/2006 [OET Bulletin 65-Supplement C, July 2001]

Communication System: GSM 1900; Frequency: 1880 MHz; Duty Cycle: 1:8.3

Medium parameters used: $f = 1880$ MHz; $\sigma = 1.42$ mho/m; $\epsilon_r = 39$; $\rho = 1000$ kg/m³

Phantom section: Right Section

DASY4 Configuration:

- Probe: ES3DV2 - SN3017; ConvF(5.02, 5.02, 5.02); Calibrated: 2005-09-20
- Sensor-Surface: 4mm (Mechanical Surface Detection)
- Electronics: DAE4 Sn670; Calibrated: 2006-03-21
- Phantom: PHANTOM #2; Type: SAM; Serial: TP-1141
- Measurement SW: DASY4, V4.6 Build 23; Postprocessing SW: SEMCAD, V1.8 Build 160

Ear/Tilt, Ch.661, Ant.Intenna, Bat.Standard/Area Scan (51x71x1): Measurement grid:

$dx=20$ mm, $dy=20$ mm

Maximum value of SAR (interpolated) = 0.297 mW/g

Ear/Tilt, Ch.661, Ant.Intenna, Bat.Standard/Zoom Scan (5x5x7)/Cube 0: Measurement

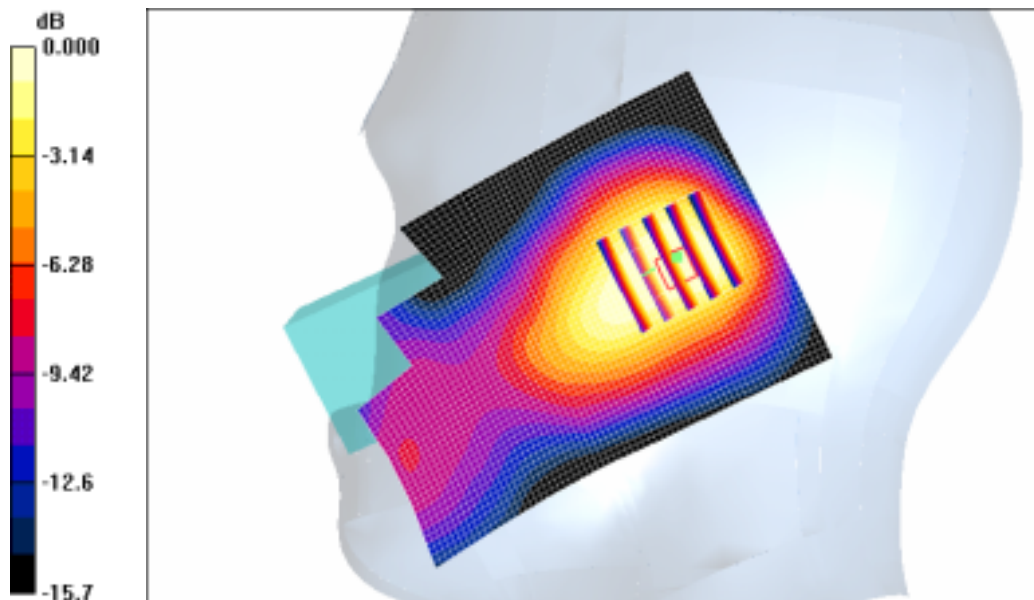
grid: $dx=8$ mm, $dy=8$ mm, $dz=5$ mm

Reference Value = 8.26 V/m; Power Drift = -0.169 dB

Peak SAR (extrapolated) = 0.328 W/kg

SAR(1 g) = 0.220 mW/g

Maximum value of SAR (measured) = 0.235 mW/g



0 dB = 0.235mW/g

SAMSUNG FCC ID : A3LSGHX656 1900MHz GSM1900 Head SAR

DUT: SGH-X656; Serial: FD-055-M

Program Name: SGH-X656 GSM1900 Left (Job No. : FD-055)

Procedure Name: Cheek/Touch, Ch.810, Ant.Intenna, Bat.Standard

Procedure Notes: Meas. Ambient Temp(celsius)-22.7; Tissue Temp(celsius)-21.9; Test Date-20/May/2006[OET Bulletin 65-Supplement C, July 2001]

Communication System: GSM 1900; Frequency: 1909.8 MHz; Duty Cycle: 1:8.3

Medium parameters used: $f = 1909.8$ MHz; $\sigma = 1.42$ mho/m; $\epsilon_r = 39$; $\rho = 1000$ kg/m³

Phantom section: Left Section

DASY4 Configuration:

- Probe: ES3DV2 - SN3017; ConvF(5.02, 5.02, 5.02); Calibrated: 2005-09-20
- Sensor-Surface: 4mm (Mechanical Surface Detection)
- Electronics: DAE4 Sn670; Calibrated: 2006-03-21
- Phantom: PHANTOM #2; Type: SAM; Serial: TP-1141
- Measurement SW: DASY4, V4.6 Build 23; Postprocessing SW: SEMCAD, V1.8 Build 160

Cheek/Touch, Ch.810, Ant.Intenna, Bat.Standard/Zoom Scan (5x5x7)/Cube 0:

Measurement grid: dx=8mm, dy=8mm, dz=5mm

Reference Value = 10.1 V/m; Power Drift = -0.167 dB

Peak SAR (extrapolated) = 2.42 W/kg

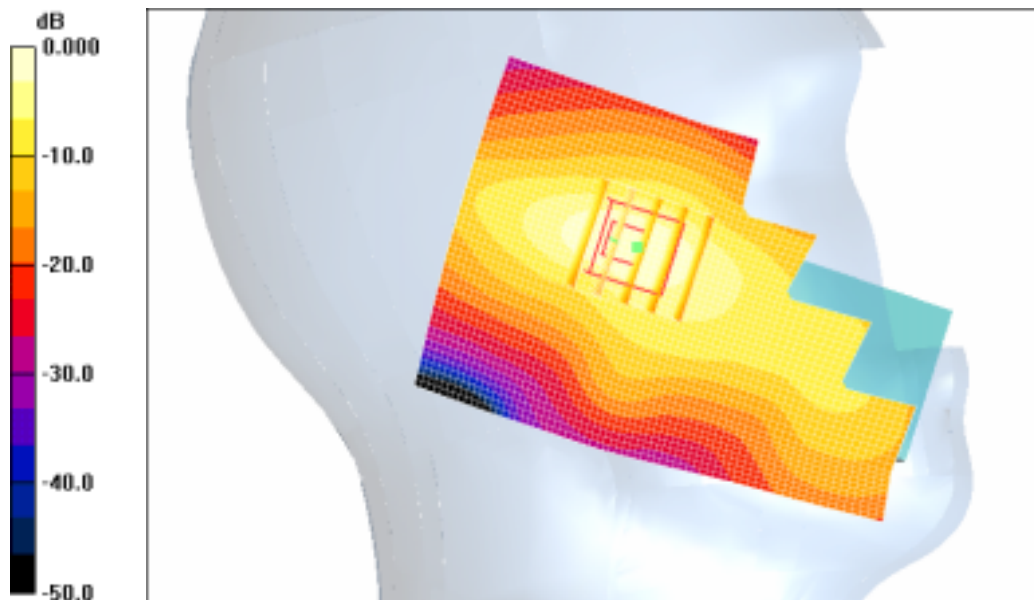
SAR(1 g) = 1.37 mW/g;

Maximum value of SAR (measured) = 1.56 mW/g

Cheek/Touch, Ch.810, Ant.Intenna, Bat.Standard/Area Scan (51x71x1): Measurement

grid: dx=20mm, dy=20mm

Maximum value of SAR (interpolated) = 1.49 mW/g



0 dB = 1.49mW/g

SAMSUNG FCC ID : A3LSGHX656 1900MHz GSM1900 Head SAR

DUT: SGH-X656; Serial: FD-055-M

Program Name: SGH-X656 GSM1900 Left (Job No. : FD-055)

Procedure Name: Ear/Tilt, Ch.661, Ant.Intenna, Bat.Standard

Procedure Notes: Meas. Ambient Temp(celsius)-22.7; Tissue Temp(celsius)-21.9; Test Date-20/May/2006[OET Bulletin 65-Supplement C, July 2001]

Communication System: GSM 1900; Frequency: 1880 MHz; Duty Cycle: 1:8.3

Medium parameters used: $f = 1880$ MHz; $\sigma = 1.42$ mho/m; $\epsilon_r = 39$; $\rho = 1000$ kg/m³

Phantom section: Left Section

DASY4 Configuration:

- Probe: ES3DV2 - SN3017; ConvF(5.02, 5.02, 5.02); Calibrated: 2005-09-20
- Sensor-Surface: 4mm (Mechanical Surface Detection)
- Electronics: DAE4 Sn670; Calibrated: 2006-03-21
- Phantom: PHANTOM #2; Type: SAM; Serial: TP-1141
- Measurement SW: DASY4, V4.6 Build 23; Postprocessing SW: SEMCAD, V1.8 Build 160

Ear/Tilt, Ch.661, Ant.Intenna, Bat.Standard 2/Area Scan (51x71x1): Measurement grid:

$dx=20$ mm, $dy=20$ mm

Maximum value of SAR (interpolated) = 0.284 mW/g

Ear/Tilt, Ch.661, Ant.Intenna, Bat.Standard 2/Zoom Scan (5x5x7)/Cube 0: Measurement

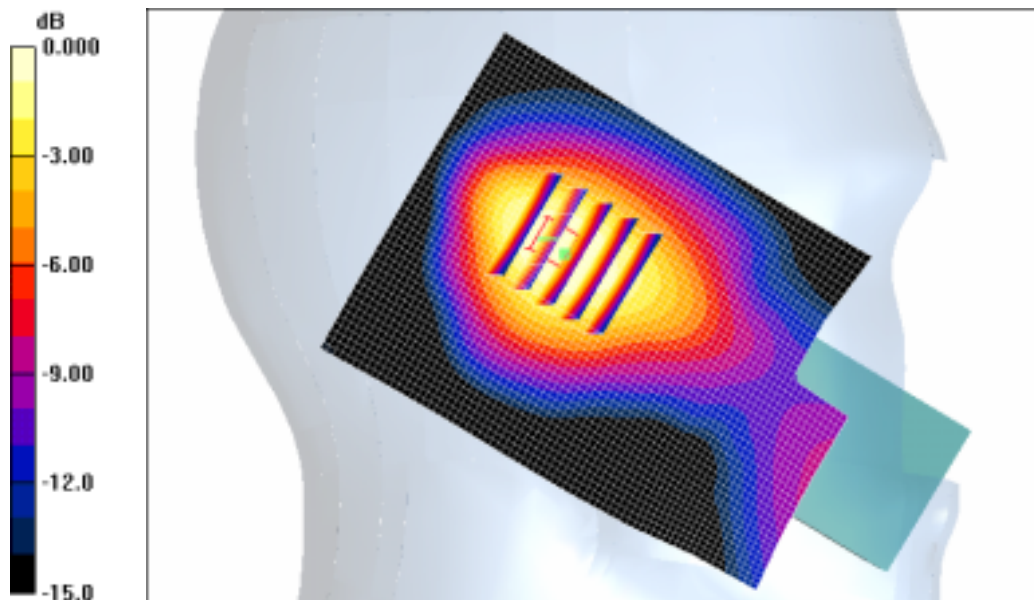
grid: $dx=8$ mm, $dy=8$ mm, $dz=5$ mm

Reference Value = 11.9 V/m; Power Drift = 0.076 dB

Peak SAR (extrapolated) = 0.334 W/kg

SAR(1 g) = 0.223 mW/g

Maximum value of SAR (measured) = 0.240 mW/g



0 dB = 0.240mW/g

SAMSUNG FCC ID : A3LSGHX656 1900MHz GPRS1900 Body SAR

DUT: SGH-X656(Body); Serial: FD-055-M

Program Name: SGH-X656 GSM1900 Body (Job No. : FD-055)

Procedure Name: Body, Ch.810, Ant.Intenna, Bat.Standard

Procedure Notes: Meas. Ambient Temp(celsius)-22.2, Tissue Temp(celsius)-22.5; Test Date-20/May/2006 [OET Bulletin 65-Supplement C, July 2001]

Communication System: Body GPRS ; Frequency: 1909.8 MHz;Duty Cycle: 1:4.15

Medium parameters used: $f = 1909.8$ MHz; $\sigma = 1.53$ mho/m; $\epsilon_r = 52.3$; $\rho = 1000$ kg/m³

Phantom section: Flat Section

DASY4 Configuration:

- Probe: ES3DV2 - SN3017; ConvF(4.47, 4.47, 4.47); Calibrated: 2005-09-20
- Sensor-Surface: 4mm (Mechanical Surface Detection)
- Electronics: DAE4 Sn670; Calibrated: 2006-03-21
- Phantom: PHANTOM #2; Type: SAM; Serial: TP-1141
- Measurement SW: DASY4, V4.6 Build 23; Postprocessing SW: SEMCAD, V1.8 Build 160

Body, Ch.810, Ant.Intenna, Bat.Standard/Area Scan (51x71x1): Measurement grid:

dx=20mm, dy=20mm

Maximum value of SAR (interpolated) = 0.372 mW/g

Body, Ch.810, Ant.Intenna, Bat.Standard/Zoom Scan (5x5x7)/Cube 0: Measurement grid:

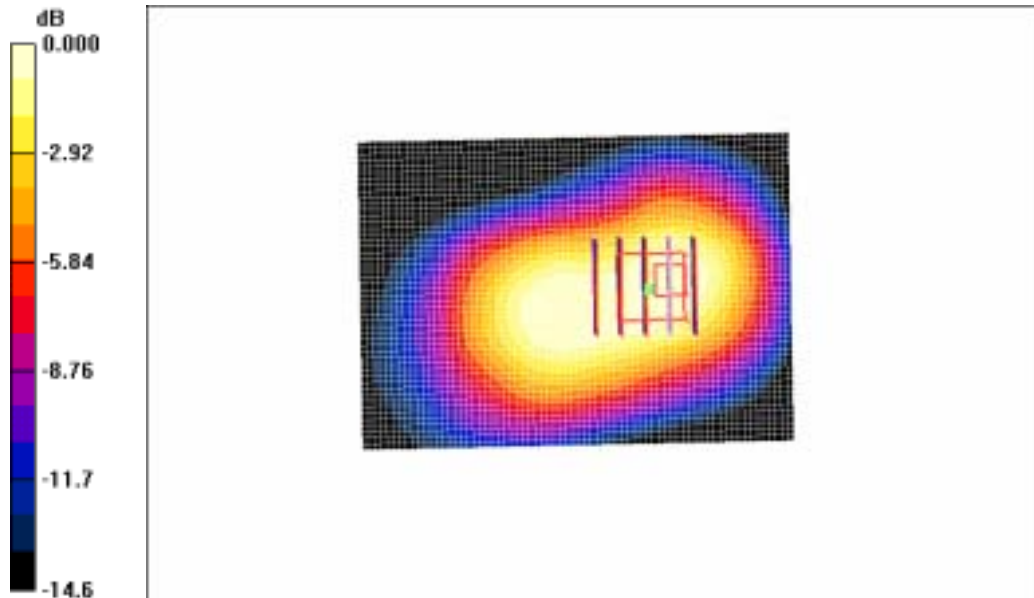
dx=8mm, dy=8mm, dz=5mm

Reference Value = 14.6 V/m; Power Drift = -0.085 dB

Peak SAR (extrapolated) = 0.481 W/kg

SAR(1 g) = 0.301 mW/g

Maximum value of SAR (measured) = 0.325 mW/g



0 dB = 0.325mW/g

SAMSUNG FCC ID : A3LSGHX656 835MHz GSM850 Head SAR

DUT: SGH-X656; Serial: FD-055-M

Program Name: SGH-X656 GSM850 Right (Job No. : FD-055)

Procedure Name: Cheek/Touch, Ch.128, Ant.Intenna, Bat.Standard

Procedure Notes: Meas. Ambient Temp(celsius)-23.1, Tissue Temp(celsius)-22.5; Test Date-20/May/2006 [OET Bulletin 65-Supplement C, July 2001]

Communication System: GSM 850; Frequency: 824.2 MHz;Duty Cycle: 1:8.3

Medium parameters used: $f = 824.2$ MHz; $\sigma = 0.9$ mho/m; $\epsilon_r = 40.3$; $\rho = 1000$ kg/m³

Phantom section: Right Section

DASY4 Configuration:

- Probe: ES3DV2 - SN3017; ConvF(6.14, 6.14, 6.14); Calibrated: 2005-09-20
- Sensor-Surface: 4mm (Mechanical Surface Detection)
- Electronics: DAE4 Sn670; Calibrated: 2006-03-21
- Phantom: PHANTOM #1; Type: SAM; Serial: TP-1143
- Measurement SW: DASY4, V4.6 Build 23; Postprocessing SW: SEMCAD, V1.8 Build 160

Cheek/Touch, Ch.128, Ant.Intenna, Bat.Standard/Zoom Scan (5x5x7)/Cube 0:

Measurement grid: dx=8mm, dy=8mm, dz=5mm

Reference Value = 10.3 V/m; Power Drift = -0.198 dB

Peak SAR (extrapolated) = 1.77 W/kg

SAR(1 g) = 1.12 mW/g

Maximum value of SAR (measured) = 1.22 mW/g

Cheek/Touch, Ch.128, Ant.Intenna, Bat.Standard/Area Scan (51x71x1): Measurement

grid: dx=20mm, dy=20mm

Maximum value of SAR (interpolated) = 1.14 mW/g



SAMSUNG FCC ID : A3LSGHX656 835MHz GPRS850 Body SAR

DUT: SGH-X656(Body); Serial: FD-055-M

Program Name: SGH-X656 GSM850 Body (Job No. : FD-055)

Procedure Name: Body, Ch.128, Ant.Intenna, Bat.Standard 2

Procedure Notes: Meas.Ambient Temp(celsius)-22.5, Tissue Temp(celsius)-22.3; Test Date-20/May/2006 [OET Bulletin 65-Supplement C, July 2001]

Communication System: GSM 850 (GPRS); Frequency: 824.2 MHz;Duty Cycle: 1:4.15

Medium parameters used: $f = 824.2$ MHz; $\sigma = 0.98$ mho/m; $\epsilon_r = 53.6$; $\rho = 1000$ kg/m³

Phantom section: Flat Section

DASY4 Configuration:

- Probe: ES3DV2 - SN3017; ConvF(6.18, 6.18, 6.18); Calibrated: 2005-09-20
- Sensor-Surface: 4mm (Mechanical Surface Detection)
- Electronics: DAE4 Sn670; Calibrated: 2006-03-21
- Phantom: PHANTOM #2; Type: SAM; Serial: TP-1141
- Measurement SW: DASY4, V4.6 Build 23; Postprocessing SW: SEMCAD, V1.8 Build 160

Body, Ch.128, Ant.Intenna, Bat.Standard 2/Area Scan (51x71x1): Measurement grid:

dx=20mm, dy=20mm

Maximum value of SAR (interpolated) = 0.539 mW/g

Body, Ch.128, Ant.Intenna, Bat.Standard 2/Zoom Scan (5x5x7)/Cube 0: Measurement

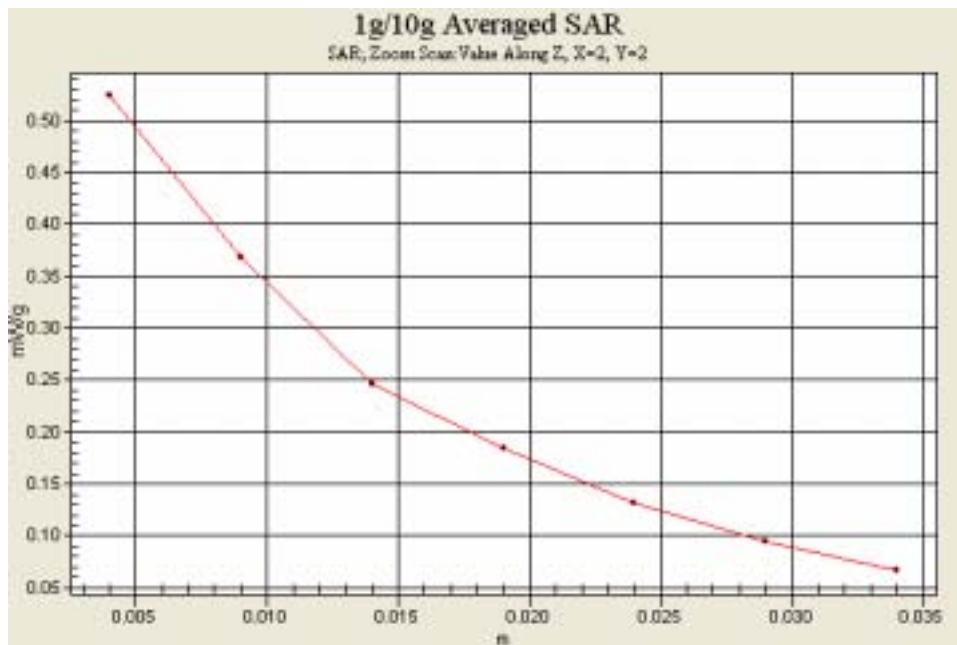
grid: dx=8mm, dy=8mm, dz=5mm

Reference Value = 18.3 V/m; Power Drift = 0.045 dB

Peak SAR (extrapolated) = 0.685 W/kg

SAR(1 g) = 0.488 mW/g

Maximum value of SAR (measured) = 0.524 mW/g



SAMSUNG FCC ID : A3LSGHX656 1900MHz GSM1900 Head SAR

DUT: SGH-X656; Serial: FD-055-M

Program Name: SGH-X656 GSM1900 Left (Job No. : FD-055)

Procedure Name: Cheek/Touch, Ch.810, Ant.Intenna, Bat.Standard

Procedure Notes: Meas. Ambient Temp(celsius)-22.7; Tissue Temp(celsius)-21.9; Test Date-20/May/2006[OET Bulletin 65-Supplement C, July 2001]

Communication System: GSM 1900; Frequency: 1909.8 MHz; Duty Cycle: 1:8.3

Medium parameters used: $f = 1909.8$ MHz; $\sigma = 1.42$ mho/m; $\epsilon_r = 39$; $\rho = 1000$ kg/m³

Phantom section: Left Section

DASY4 Configuration:

- Probe: ES3DV2 - SN3017; ConvF(5.02, 5.02, 5.02); Calibrated: 2005-09-20
- Sensor-Surface: 4mm (Mechanical Surface Detection)
- Electronics: DAE4 Sn670; Calibrated: 2006-03-21
- Phantom: PHANTOM #2; Type: SAM; Serial: TP-1141
- Measurement SW: DASY4, V4.6 Build 23; Postprocessing SW: SEMCAD, V1.8 Build 160

Cheek/Touch, Ch.810, Ant.Intenna, Bat.Standard/Zoom Scan (5x5x7)/Cube 0:

Measurement grid: dx=8mm, dy=8mm, dz=5mm

Reference Value = 10.1 V/m; Power Drift = -0.167 dB

Peak SAR (extrapolated) = 2.42 W/kg

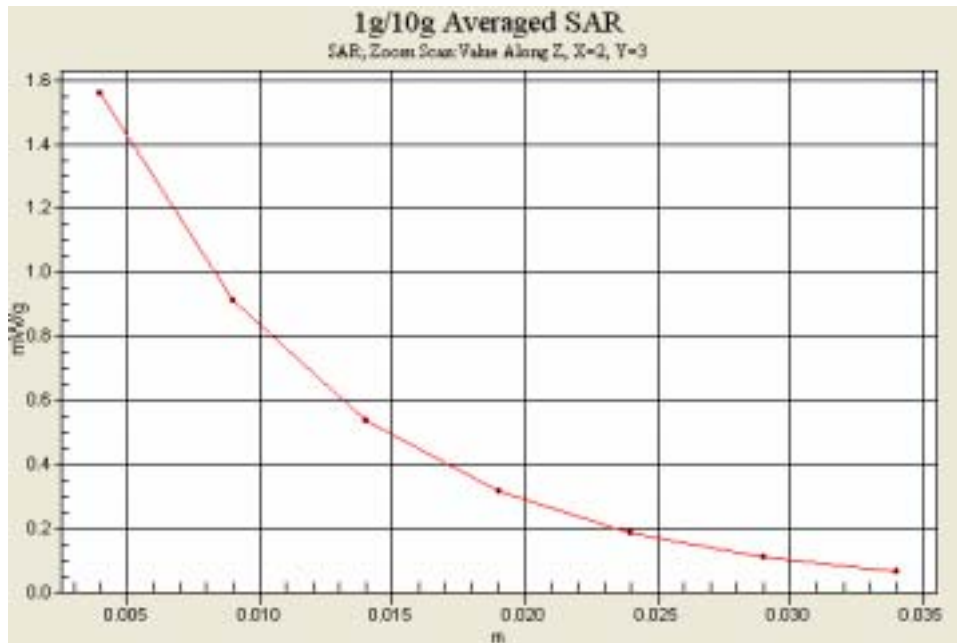
SAR(1 g) = 1.37 mW/g

Maximum value of SAR (measured) = 1.56 mW/g

Cheek/Touch, Ch.810, Ant.Intenna, Bat.Standard/Area Scan (51x71x1): Measurement

grid: dx=20mm, dy=20mm

Maximum value of SAR (interpolated) = 1.49 mW/g



SAMSUNG FCC ID : A3LSGHX656 1900MHz GPRS1900 Body SAR

DUT: SGH-X656(Body); Serial: FD-055-M

Program Name: SGH-X656 GSM1900 Body (Job No. : FD-055)

Procedure Name: Body, Ch.810, Ant.Intenna, Bat.Standard

Procedure Notes: Meas. Ambient Temp(celsius)-22.2, Tissue Temp(celsius)-22.5; Test Date-20/May/2006 [OET Bulletin 65-Supplement C, July 2001]

Communication System: Body GPRS ; Frequency: 1909.8 MHz;Duty Cycle: 1:4.15

Medium parameters used: $f = 1909.8$ MHz; $\sigma = 1.53$ mho/m; $\epsilon_r = 52.3$; $\rho = 1000$ kg/m³

Phantom section: Flat Section

DASY4 Configuration:

- Probe: ES3DV2 - SN3017; ConvF(4.47, 4.47, 4.47); Calibrated: 2005-09-20
- Sensor-Surface: 4mm (Mechanical Surface Detection)
- Electronics: DAE4 Sn670; Calibrated: 2006-03-21
- Phantom: PHANTOM #2; Type: SAM; Serial: TP-1141
- Measurement SW: DASY4, V4.6 Build 23; Postprocessing SW: SEMCAD, V1.8 Build 160

Body, Ch.810, Ant.Intenna, Bat.Standard/Area Scan (51x71x1): Measurement grid:

dx=20mm, dy=20mm

Maximum value of SAR (interpolated) = 0.372 mW/g

Body, Ch.810, Ant.Intenna, Bat.Standard/Zoom Scan (5x5x7)/Cube 0: Measurement grid:

dx=8mm, dy=8mm, dz=5mm

Reference Value = 14.6 V/m; Power Drift = -0.085 dB

Peak SAR (extrapolated) = 0.481 W/kg

SAR(1 g) = 0.301 mW/g

Maximum value of SAR (measured) = 0.325 mW/g

