

SAMSUNG FCC ID : A3LSGHX530 - - GSM1900 Head SAR

DUT: SGH-X530(Down); Serial: FD-206-C

Program Name: SGH-X530 GSM1900 Right Slide Down (Job No. : FD-206)

Procedure Name: Cheek/Touch, Ch.810, Ant.Intenna, Bat.Standard

Meas. Ambient Temp(celsius)-22.3, Tissue Temp(celsius)-21.8; Test Date-19/Oct/2006

Communication System: GSM 1900; Frequency: 1909.8 MHz;Duty Cycle: 1:8.3

Medium parameters used: $f = 1909.8$ MHz; $\sigma = 1.39$ mho/m; $\epsilon_r = 39.9$; $\rho = 1000$ kg/m³

Phantom section: Right Section

DASY4 Configuration:

- Probe: ES3DV2 - SN3017; ConvF(5.06, 5.06, 5.06); Calibrated: 2006-09-20
- Sensor-Surface: 4mm (Mechanical Surface Detection)
- Electronics: DAE3 Sn486; Calibrated: 2006-07-17
- Phantom: PHANTOM #1; Type: SAM; Serial: TP-1143
- Measurement SW: DASY4, V4.7 Build 44; Postprocessing SW: SEMCAD, V1.8 Build 171

Cheek/Touch, Ch.810, Ant.Intenna, Bat.Standard/Area Scan (51x71x1): Measurement grid: dx=20mm, dy=20mm

Maximum value of SAR (interpolated) = 0.196 mW/g

Cheek/Touch, Ch.810, Ant.Intenna, Bat.Standard/Zoom Scan (5x5x7)/Cube 0:

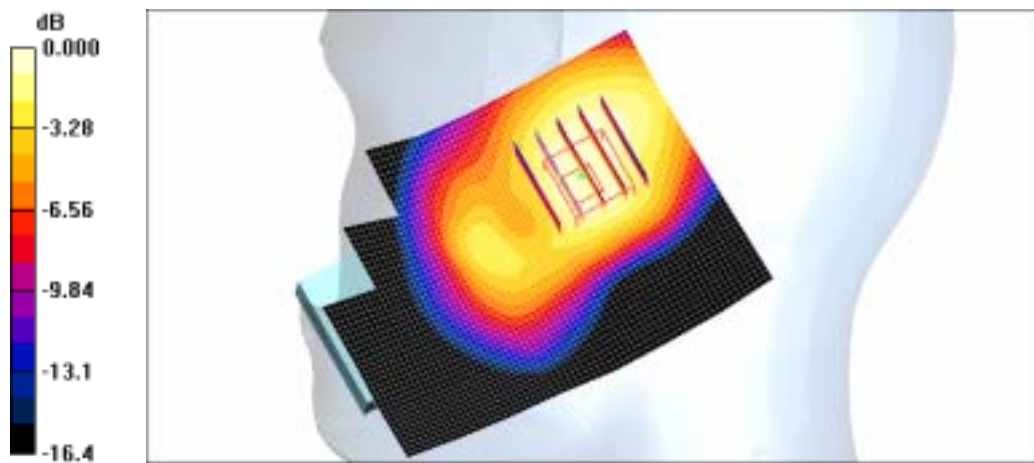
Measurement grid: dx=8mm, dy=8mm, dz=5mm

Reference Value = 8.94 V/m; Power Drift = -0.007 dB

Peak SAR (extrapolated) = 0.265 W/kg

SAR(1 g) = 0.169 mW/g

Maximum value of SAR (measured) = 0.171 mW/g



0 dB = 0.171mW/g

SAMSUNG FCC ID : A3LSGHX530 - - GSM1900 Head SAR

DUT: SGH-X530(Down); Serial: FD-206-C

Program Name: SGH-X530 GSM1900 Right Slide Down (Job No. : FD-206)

Procedure Name: Ear/Tilt, Ch.661, Ant.Intenna, Bat.Standard

Meas. Ambient Temp(celsius)-22.3, Tissue Temp(celsius)-21.8; Test Date-19/Oct/2006

Communication System: GSM 1900; Frequency: 1880 MHz;Duty Cycle: 1:8.3

Medium parameters used: $f = 1880$ MHz; $\sigma = 1.39$ mho/m; $\epsilon_r = 39.9$; $\rho = 1000$ kg/m³

Phantom section: Right Section

DASY4 Configuration:

- Probe: ES3DV2 - SN3017; ConvF(5.06, 5.06, 5.06); Calibrated: 2006-09-20
- Sensor-Surface: 4mm (Mechanical Surface Detection)
- Electronics: DAE3 Sn486; Calibrated: 2006-07-17
- Phantom: PHANTOM #1; Type: SAM; Serial: TP-1143
- Measurement SW: DASY4, V4.7 Build 44; Postprocessing SW: SEMCAD, V1.8 Build 171

Ear/Tilt, Ch.661, Ant.Intenna, Bat.Standard/Zoom Scan 2 (5x5x7)/Cube 0: Measurement grid: dx=8mm, dy=8mm, dz=5mm

Reference Value = 3.39 V/m; Power Drift = -0.173 dB

Peak SAR (extrapolated) = 0.149 W/kg

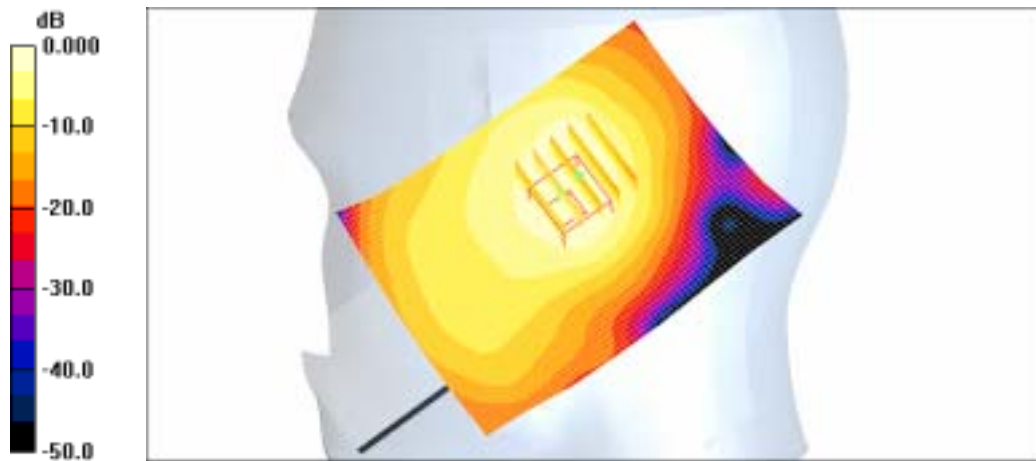
SAR(1 g) = 0.087 mW/g

Maximum value of SAR (measured) = 0.093 mW/g

Ear/Tilt, Ch.661, Ant.Intenna, Bat.Standard/Area Scan (51x71x1): Measurement grid:

dx=20mm, dy=20mm

Maximum value of SAR (interpolated) = 0.100 mW/g



0 dB = 0.100mW/g

SAMSUNG FCC ID : A3LSGHX530 - - GSM1900 Head SAR

DUT: SGH-X530; Serial: FD-206-C

Program Name: SGH-X530 GSM1900 Left Slide Down(Job No. : FD-206)

Procedure Name: Cheek/Touch, Ch.810, Ant.Intenna, Bat.Standard

Meas. Ambient Temp(celsius)-22.3, Tissue Temp(celsius)-21.8; Test Date-19/Oct/2006

Communication System: GSM 1900; Frequency: 1909.8 MHz;Duty Cycle: 1:8.3

Medium parameters used: $f = 1909.8$ MHz; $\sigma = 1.39$ mho/m; $\epsilon_r = 39.9$; $\rho = 1000$ kg/m³

Phantom section: Left Section

DASY4 Configuration:

- Probe: ES3DV2 - SN3017; ConvF(5.06, 5.06, 5.06); Calibrated: 2006-09-20
- Sensor-Surface: 4mm (Mechanical Surface Detection)
- Electronics: DAE3 Sn486; Calibrated: 2006-07-17
- Phantom: PHANTOM #1; Type: SAM; Serial: TP-1143
- Measurement SW: DASY4, V4.7 Build 44; Postprocessing SW: SEMCAD, V1.8 Build 171

Cheek/Touch, Ch.810, Ant.Intenna, Bat.Standard/Zoom Scan (5x5x7)/Cube 0:

Measurement grid: dx=8mm, dy=8mm, dz=5mm

Reference Value = 8.90 V/m; Power Drift = -0.018 dB

Peak SAR (extrapolated) = 0.316 W/kg

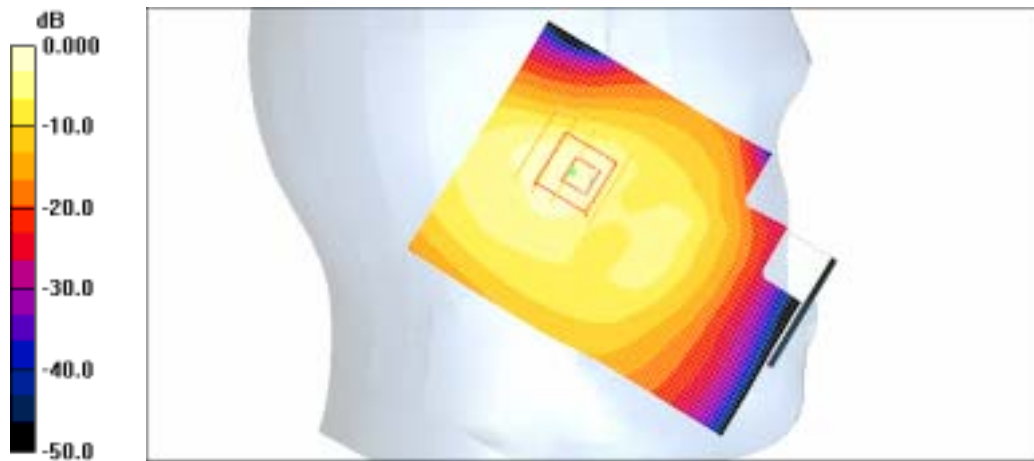
SAR(1 g) = 0.222 mW/g

Maximum value of SAR (measured) = 0.234 mW/g

Cheek/Touch, Ch.810, Ant.Intenna, Bat.Standard/Area Scan (51x71x1): Measurement

grid: dx=20mm, dy=20mm

Maximum value of SAR (interpolated) = 0.255 mW/g



0 dB = 0.255mW/g

SAMSUNG FCC ID : A3LSGHX530 - - GSM1900 Head SAR

DUT: SGH-X530; Serial: FD-206-C

Program Name: SGH-X530 GSM1900 Left Slide Down(Job No. : FD-206)

Procedure Name: Ear/Tilt, Ch.661, Ant.Intenna, Bat.Standard

Meas. Ambient Temp(celsius)-22.3, Tissue Temp(celsius)-21.8; Test Date-19/Oct/2006

Communication System: GSM 1900; Frequency: 1880 MHz;Duty Cycle: 1:8.3

Medium parameters used: $f = 1880$ MHz; $\sigma = 1.39$ mho/m; $\epsilon_r = 39.9$; $\rho = 1000$ kg/m³

Phantom section: Left Section

DASY4 Configuration:

- Probe: ES3DV2 - SN3017; ConvF(5.06, 5.06, 5.06); Calibrated: 2006-09-20
- Sensor-Surface: 4mm (Mechanical Surface Detection)
- Electronics: DAE3 Sn486; Calibrated: 2006-07-17
- Phantom: PHANTOM #1; Type: SAM; Serial: TP-1143
- Measurement SW: DASY4, V4.7 Build 44; Postprocessing SW: SEMCAD, V1.8 Build 171

Ear/Tilt, Ch.661, Ant.Intenna, Bat.Standard/Area Scan (51x71x1): Measurement grid: dx=20mm, dy=20mm

Maximum value of SAR (interpolated) = 0.098 mW/g

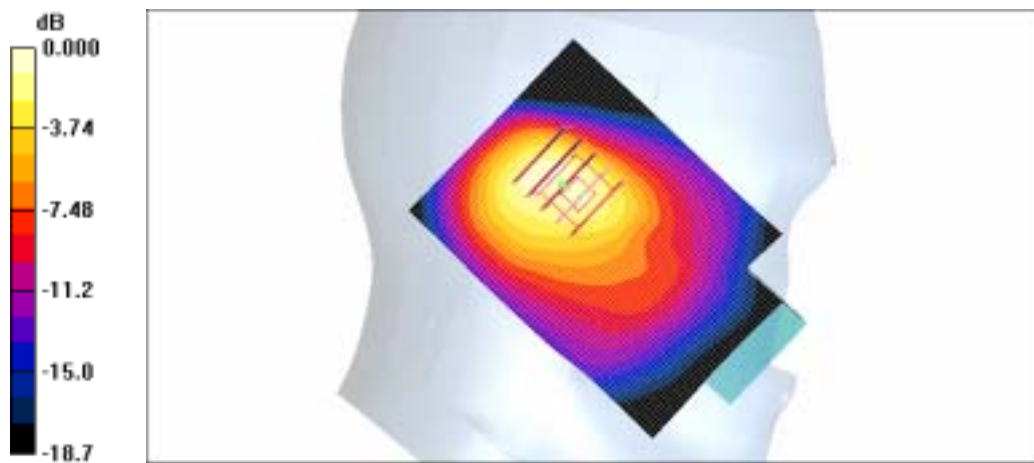
Ear/Tilt, Ch.661, Ant.Intenna, Bat.Standard/Zoom Scan (5x5x7)/Cube 0: Measurement grid: dx=8mm, dy=8mm, dz=5mm

Reference Value = 6.34 V/m; Power Drift = 0.013 dB

Peak SAR (extrapolated) = 0.147 W/kg

SAR(1 g) = 0.089 mW/g

Maximum value of SAR (measured) = 0.098 mW/g



0 dB = 0.098mW/g

SAMSUNG FCC ID : A3LSGHX530 - - GSM1900 Head SAR

DUT: SGH-X530; Serial: FD-206-C

Program Name: SGH-X530 GSM1900 Right Slide Up (Job No. : FD-206)

Procedure Name: Cheek/Touch, Ch.810, Ant.Intenna, Bat.Standard

Meas. Ambient Temp(celsius)-22.3, Tissue Temp(celsius)-21.8; Test Date-19/Oct/2006

Communication System: GSM 1900; Frequency: 1909.8 MHz;Duty Cycle: 1:8.3

Medium parameters used: $f = 1909.8$ MHz; $\sigma = 1.39$ mho/m; $\epsilon_r = 39.9$; $\rho = 1000$ kg/m³

Phantom section: Right Section

DASY4 Configuration:

- Probe: ES3DV2 - SN3017; ConvF(5.06, 5.06, 5.06); Calibrated: 2006-09-20
- Sensor-Surface: 4mm (Mechanical Surface Detection)
- Electronics: DAE3 Sn486; Calibrated: 2006-07-17
- Phantom: PHANTOM #1; Type: SAM; Serial: TP-1143
- Measurement SW: DASY4, V4.7 Build 44; Postprocessing SW: SEMCAD, V1.8 Build 171

Cheek/Touch, Ch.810, Ant.Intenna, Bat.Standard/Area Scan (51x71x1): Measurement grid: dx=20mm, dy=20mm

Maximum value of SAR (interpolated) = 0.235 mW/g

Cheek/Touch, Ch.810, Ant.Intenna, Bat.Standard/Zoom Scan (5x5x7)/Cube 0:

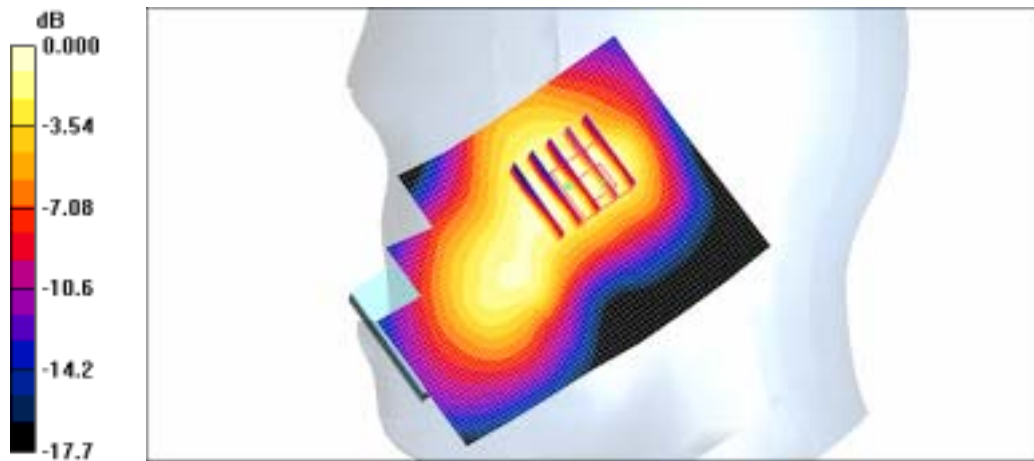
Measurement grid: dx=8mm, dy=8mm, dz=5mm

Reference Value = 11.3 V/m; Power Drift = -0.071 dB

Peak SAR (extrapolated) = 0.291 W/kg

SAR(1 g) = 0.198 mW/g

Maximum value of SAR (measured) = 0.211 mW/g



0 dB = 0.211mW/g

SAMSUNG FCC ID : A3LSGHX530 - - GSM1900 Head SAR

DUT: SGH-X530; Serial: FD-206-C

Program Name: SGH-X530 GSM1900 Right Slide Up (Job No. : FD-206)

Procedure Name: Ear/Tilt, Ch.661, Ant.Intenna, Bat.Standard

Meas. Ambient Temp(celsius)-22.3, Tissue Temp(celsius)-21.8; Test Date-19/Oct/2006

Communication System: GSM 1900; Frequency: 1880 MHz;Duty Cycle: 1:8.3

Medium parameters used: $f = 1880$ MHz; $\sigma = 1.39$ mho/m; $\epsilon_r = 39.9$; $\rho = 1000$ kg/m³

Phantom section: Right Section

DASY4 Configuration:

- Probe: ES3DV2 - SN3017; ConvF(5.06, 5.06, 5.06); Calibrated: 2006-09-20
- Sensor-Surface: 4mm (Mechanical Surface Detection)
- Electronics: DAE3 Sn486; Calibrated: 2006-07-17
- Phantom: PHANTOM #1; Type: SAM; Serial: TP-1143
- Measurement SW: DASY4, V4.7 Build 44; Postprocessing SW: SEMCAD, V1.8 Build 171

Ear/Tilt, Ch.661, Ant.Intenna, Bat.Standard/Zoom Scan (5x5x7)/Cube 0: Measurement grid: dx=8mm, dy=8mm, dz=5mm

Reference Value = 3.76 V/m; Power Drift = 0.130 dB

Peak SAR (extrapolated) = 0.207 W/kg

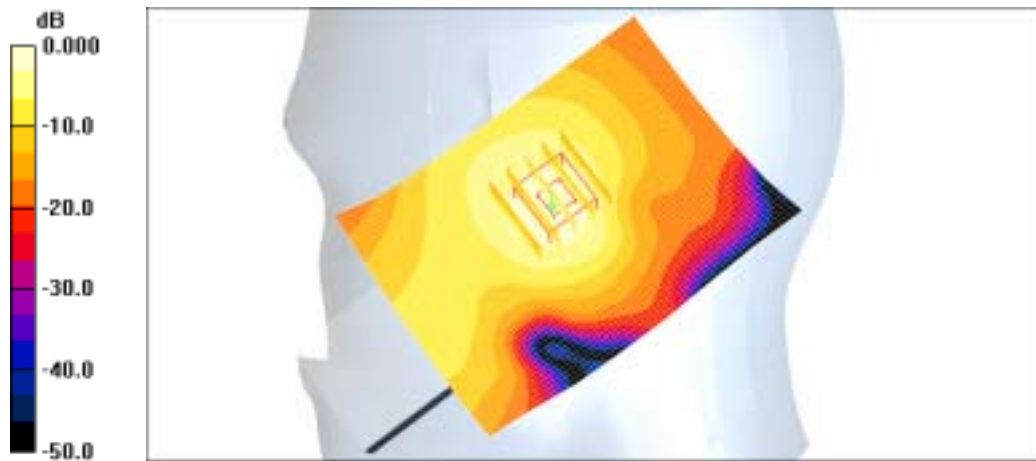
SAR(1 g) = 0.133 mW/g

Maximum value of SAR (measured) = 0.143 mW/g

Ear/Tilt, Ch.661, Ant.Intenna, Bat.Standard/Area Scan (51x71x1): Measurement grid:

dx=20mm, dy=20mm

Maximum value of SAR (interpolated) = 0.157 mW/g



0 dB = 0.157mW/g

SAMSUNG FCC ID : A3LSGHX530 - - GSM1900 Head SAR

DUT: SGH-X530; Serial: FD-206-C

Program Name: SGH-X530 GSM1900 Left Slide Up (Job No. : FD-206)

Procedure Name: Cheek/Touch, Ch.661, Ant.Intenna, Bat.Standard

Meas. Ambient Temp(celsius)-22.3, Tissue Temp(celsius)-21.8; Test Date-19/Oct/2006

Communication System: GSM 1900; Frequency: 1880 MHz;Duty Cycle: 1:8.3

Medium parameters used: $f = 1880$ MHz; $\sigma = 1.39$ mho/m; $\epsilon_r = 39.9$; $\rho = 1000$ kg/m³

Phantom section: Left Section

DASY4 Configuration:

- Probe: ES3DV2 - SN3017; ConvF(5.06, 5.06, 5.06); Calibrated: 2006-09-20
- Sensor-Surface: 4mm (Mechanical Surface Detection)
- Electronics: DAE3 Sn486; Calibrated: 2006-07-17
- Phantom: PHANTOM #1; Type: SAM; Serial: TP-1143
- Measurement SW: DASY4, V4.7 Build 44; Postprocessing SW: SEMCAD, V1.8 Build 171

Cheek/Touch, Ch.661, Ant.Intenna, Bat.Standard/Zoom Scan (5x5x7)/Cube 0:

Measurement grid: dx=8mm, dy=8mm, dz=5mm

Reference Value = 9.76 V/m; Power Drift = 0.031 dB

Peak SAR (extrapolated) = 0.187 W/kg

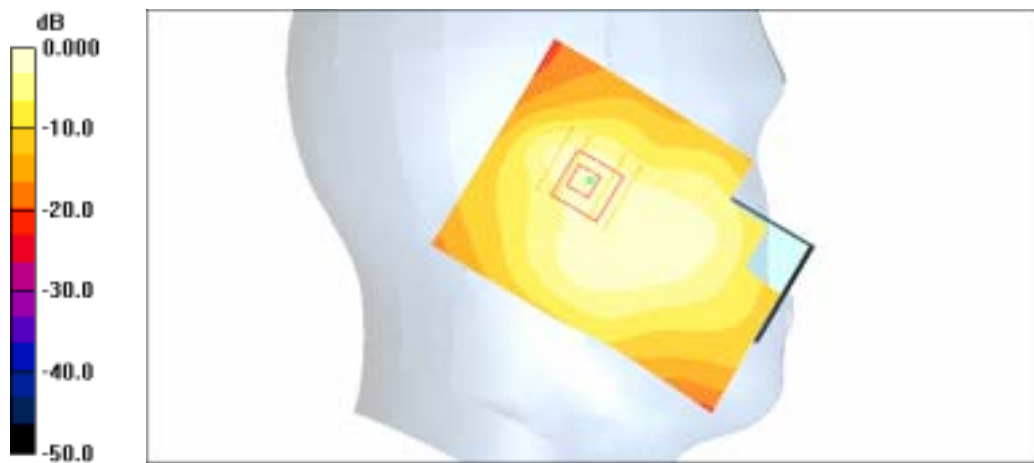
SAR(1 g) = 0.134 mW/g

Maximum value of SAR (measured) = 0.146 mW/g

Cheek/Touch, Ch.661, Ant.Intenna, Bat.Standard/Area Scan (51x71x1): Measurement

grid: dx=20mm, dy=20mm

Maximum value of SAR (interpolated) = 0.144 mW/g



0 dB = 0.144mW/g

SAMSUNG FCC ID : A3LSGHX530 - - GSM1900 Head SAR

DUT: SGH-X530; Serial: FD-206-C

Program Name: SGH-X530 GSM1900 Left Slide Up (Job No. : FD-206)

Procedure Name: Ear/Tilt, Ch.661, Ant.Intenna, Bat.Standard

Meas. Ambient Temp(celsius)-22.3, Tissue Temp(celsius)-21.8; Test Date-19/Oct/2006

Communication System: GSM 1900; Frequency: 1880 MHz;Duty Cycle: 1:8.3

Medium parameters used: $f = 1880$ MHz; $\sigma = 1.39$ mho/m; $\epsilon_r = 39.9$; $\rho = 1000$ kg/m³

Phantom section: Left Section

DASY4 Configuration:

- Probe: ES3DV2 - SN3017; ConvF(5.06, 5.06, 5.06); Calibrated: 2006-09-20
- Sensor-Surface: 4mm (Mechanical Surface Detection)
- Electronics: DAE3 Sn486; Calibrated: 2006-07-17
- Phantom: PHANTOM #1; Type: SAM; Serial: TP-1143
- Measurement SW: DASY4, V4.7 Build 44; Postprocessing SW: SEMCAD, V1.8 Build 171

Ear/Tilt, Ch.661, Ant.Intenna, Bat.Standard/Area Scan (51x71x1): Measurement grid:

$dx=20$ mm, $dy=20$ mm

Maximum value of SAR (interpolated) = 0.139 mW/g

Ear/Tilt, Ch.661, Ant.Intenna, Bat.Standard/Zoom Scan (5x5x7)/Cube 0: Measurement

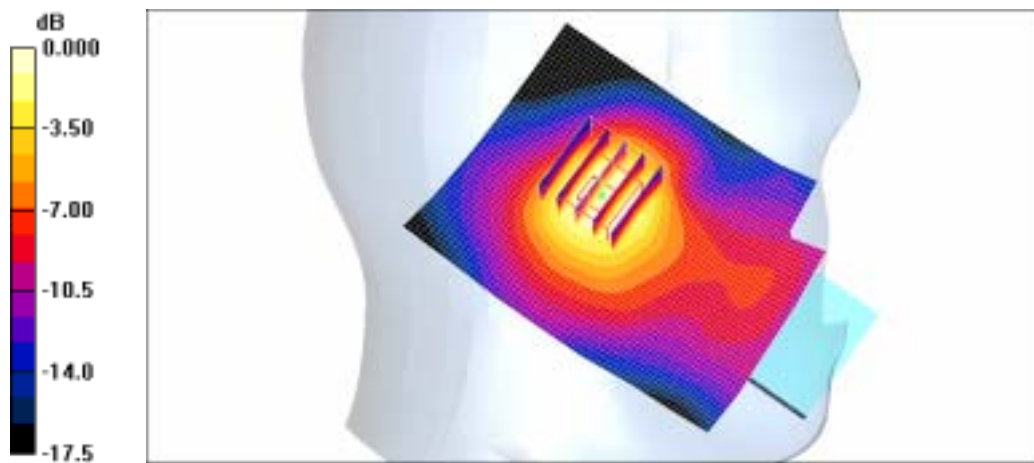
grid: $dx=8$ mm, $dy=8$ mm, $dz=5$ mm

Reference Value = 5.82 V/m; Power Drift = 0.080 dB

Peak SAR (extrapolated) = 0.151 W/kg

SAR(1 g) = 0.104 mW/g

Maximum value of SAR (measured) = 0.112 mW/g



0 dB = 0.112mW/g

SAMSUNG FCC ID : A3LSGHX530 - - GPRS1900 Body SAR

DUT: SGH-X530(Body); Serial: FD-206-C

Program Name: SGH-X530 GSM1900 Body (Job No. : FD-206)

Procedure Name: Body, Ch.810, Ant.Intenna, Bat.Standard

Meas. Ambient Temp(celsius)-22.3, Tissue Temp(celsius)-21.6; Test Date-19/Oct/2006

Communication System: Body GPRS ; Frequency: 1909.8 MHz;Duty Cycle: 1:4.15

Medium parameters used: $f = 1909.8$ MHz; $\sigma = 1.51$ mho/m; $\epsilon_r = 52.2$; $\rho = 1000$ kg/m³

Phantom section: Flat Section

DASY4 Configuration:

- Probe: ES3DV2 - SN3017; ConvF(4.57, 4.57, 4.57); Calibrated: 2006-09-20
- Sensor-Surface: 4mm (Mechanical Surface Detection)
- Electronics: DAE3 Sn486; Calibrated: 2006-07-17
- Phantom: PHANTOM #2; Type: SAM; Serial: TP-1141
- Measurement SW: DASY4, V4.7 Build 44; Postprocessing SW: SEMCAD, V1.8 Build 171

Body, Ch.810, Ant.Intenna, Bat.Standard/Area Scan (51x71x1): Measurement grid:

dx=20mm, dy=20mm

Maximum value of SAR (interpolated) = 0.276 mW/g

Body, Ch.810, Ant.Intenna, Bat.Standard/Zoom Scan (5x5x7)/Cube 0: Measurement grid:

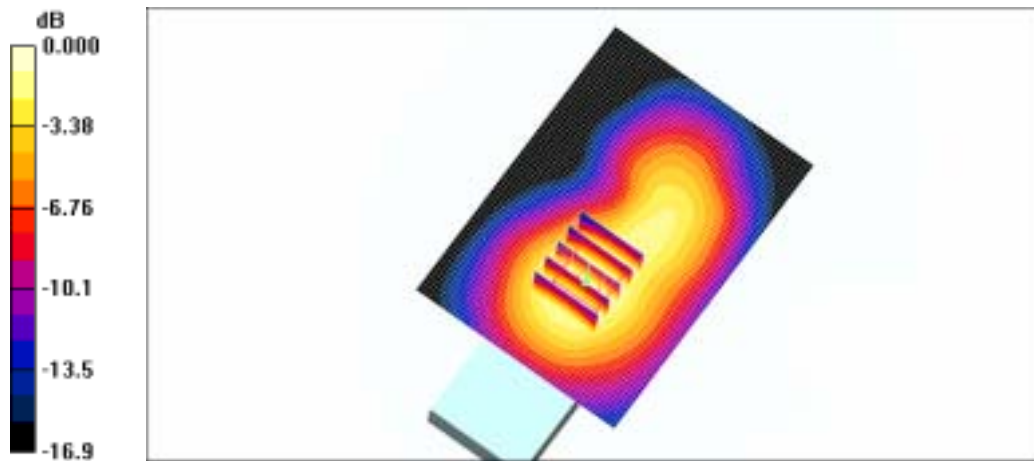
dx=8mm, dy=8mm, dz=5mm

Reference Value = 7.68 V/m; Power Drift = 0.078 dB

Peak SAR (extrapolated) = 0.349 W/kg

SAR(1 g) = 0.241 mW/g

Maximum value of SAR (measured) = 0.257 mW/g



0 dB = 0.257mW/g

SAMSUNG FCC ID : A3LSGHX530 -- GSM1900 Head SAR

DUT: SGH-X530; Serial: FD-206-C

Program Name: SGH-X530 GSM1900 Left Slide Down(Job No. : FD-206)

Procedure Name: Cheek/Touch, Ch.810, Ant.Intenna, Bat.Standard

Meas. Ambient Temp(celsius)-22.3, Tissue Temp(celsius)-21.8; Test Date-19/Oct/2006

Communication System: GSM 1900; Frequency: 1909.8 MHz;Duty Cycle: 1:8.3

Medium parameters used: $f = 1909.8$ MHz; $\sigma = 1.39$ mho/m; $\epsilon_r = 39.9$; $\rho = 1000$ kg/m³

Phantom section: Left Section

DASY4 Configuration:

- Probe: ES3DV2 - SN3017; ConvF(5.06, 5.06, 5.06); Calibrated: 2006-09-20
- Sensor-Surface: 4mm (Mechanical Surface Detection)
- Electronics: DAE3 Sn486; Calibrated: 2006-07-17
- Phantom: PHANTOM #1; Type: SAM; Serial: TP-1143
- Measurement SW: DASY4, V4.7 Build 44; Postprocessing SW: SEMCAD, V1.8 Build 171

Cheek/Touch, Ch.810, Ant.Intenna, Bat.Standard/Zoom Scan (5x5x7)/Cube 0:

Measurement grid: dx=8mm, dy=8mm, dz=5mm

Reference Value = 8.90 V/m; Power Drift = -0.018 dB

Peak SAR (extrapolated) = 0.316 W/kg

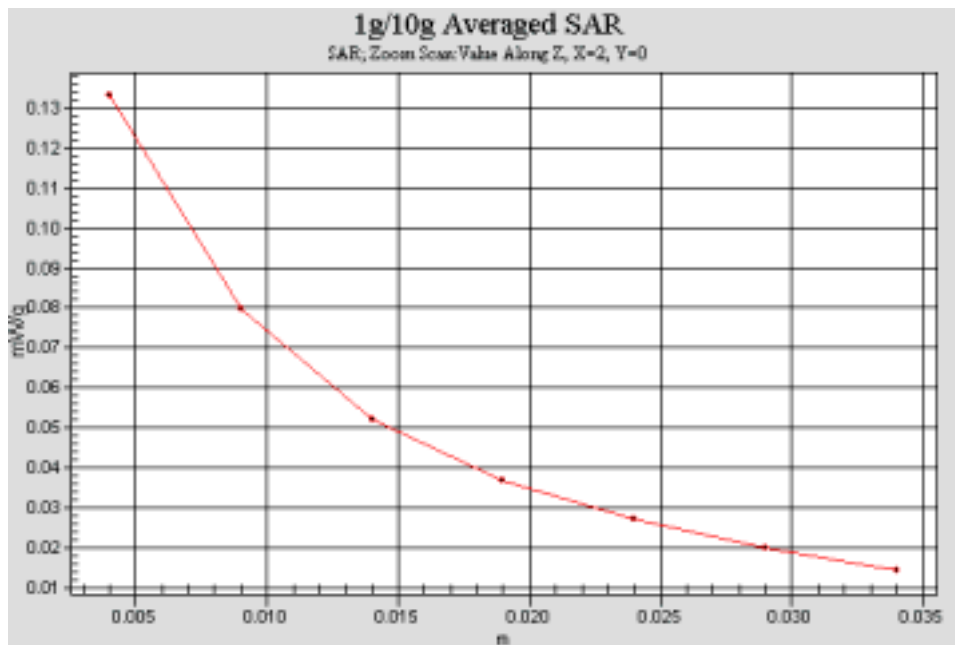
SAR(1 g) = 0.222 mW/g

Maximum value of SAR (measured) = 0.234 mW/g

Cheek/Touch, Ch.810, Ant.Intenna, Bat.Standard/Area Scan (51x71x1): Measurement

grid: dx=20mm, dy=20mm

Maximum value of SAR (interpolated) = 0.255 mW/g



SAMSUNG FCC ID : A3LSGHX530 -- GPRS1900 Body SAR

DUT: SGH-X530(Body); Serial: FD-206-C

Program Name: SGH-X530 GSM1900 Body (Job No. : FD-206)

Procedure Name: Body, Ch.810, Ant.Intenna, Bat.Standard

Meas. Ambient Temp(celsius)-22.3, Tissue Temp(celsius)-21.6; Test Date-19/Oct/2006

Communication System: Body GPRS ; Frequency: 1909.8 MHz;Duty Cycle: 1:4.15

Medium parameters used: $f = 1909.8$ MHz; $\sigma = 1.51$ mho/m; $\epsilon_r = 52.2$; $\rho = 1000$ kg/m³

Phantom section: Flat Section

DASY4 Configuration:

- Probe: ES3DV2 - SN3017; ConvF(4.57, 4.57, 4.57); Calibrated: 2006-09-20
- Sensor-Surface: 4mm (Mechanical Surface Detection)
- Electronics: DAE3 Sn486; Calibrated: 2006-07-17
- Phantom: PHANTOM #2; Type: SAM; Serial: TP-1141
- Measurement SW: DASY4, V4.7 Build 44; Postprocessing SW: SEMCAD, V1.8 Build 171

Body, Ch.810, Ant.Intenna, Bat.Standard/Area Scan (51x71x1): Measurement grid:

dx=20mm, dy=20mm

Maximum value of SAR (interpolated) = 0.276 mW/g

Body, Ch.810, Ant.Intenna, Bat.Standard/Zoom Scan (5x5x7)/Cube 0: Measurement grid:

dx=8mm, dy=8mm, dz=5mm

Reference Value = 7.68 V/m; Power Drift = 0.078 dB

Peak SAR (extrapolated) = 0.349 W/kg

SAR(1 g) = 0.241 mW/g

Maximum value of SAR (measured) = 0.257 mW/g

