

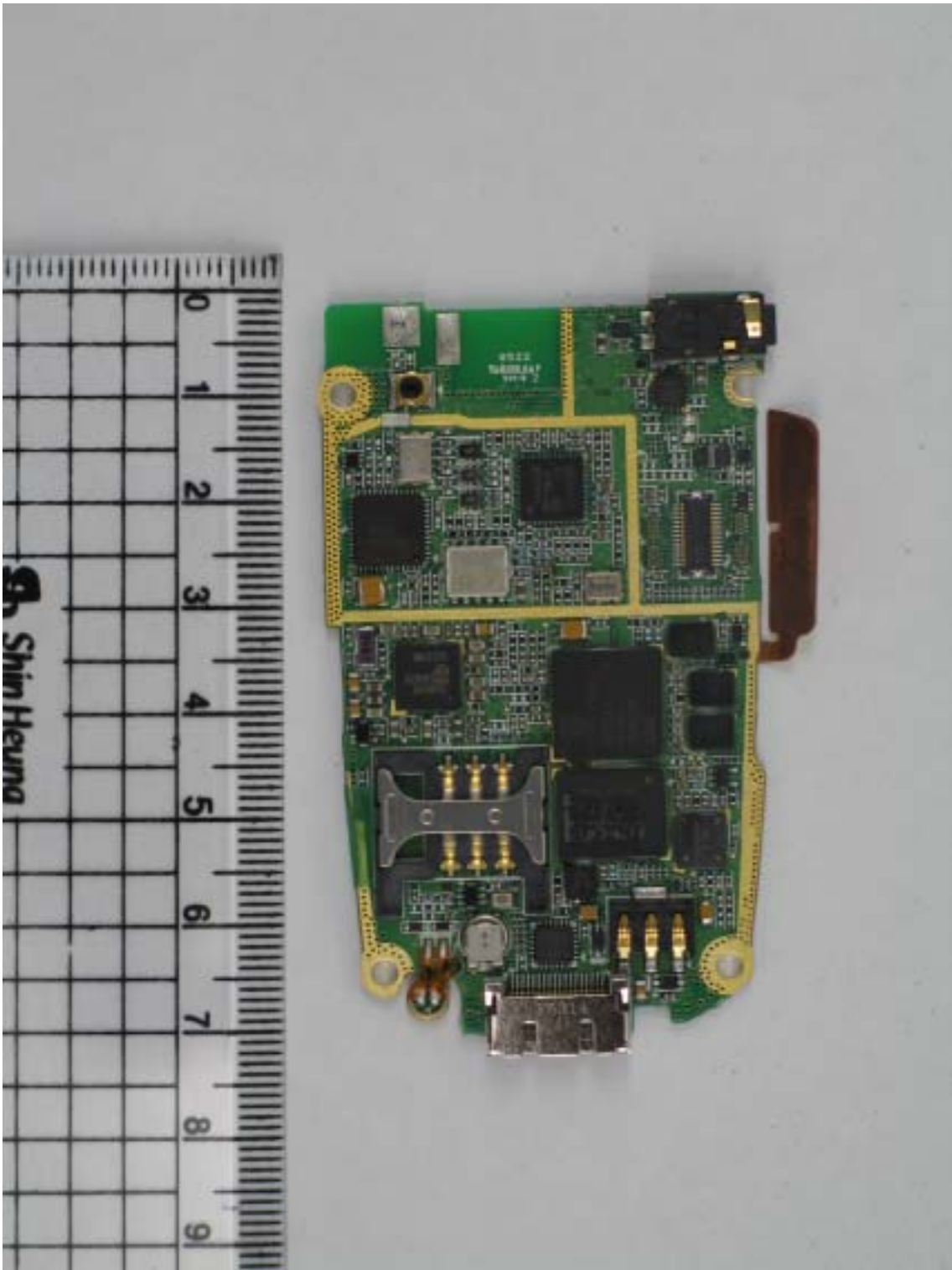
© 2005 SAMSUNG ELECTRONICS Co., Ltd.

*SAMSUNG FCC ID: A3LSGHX497
Dual-Band GSM850/GSM1900 Phone*



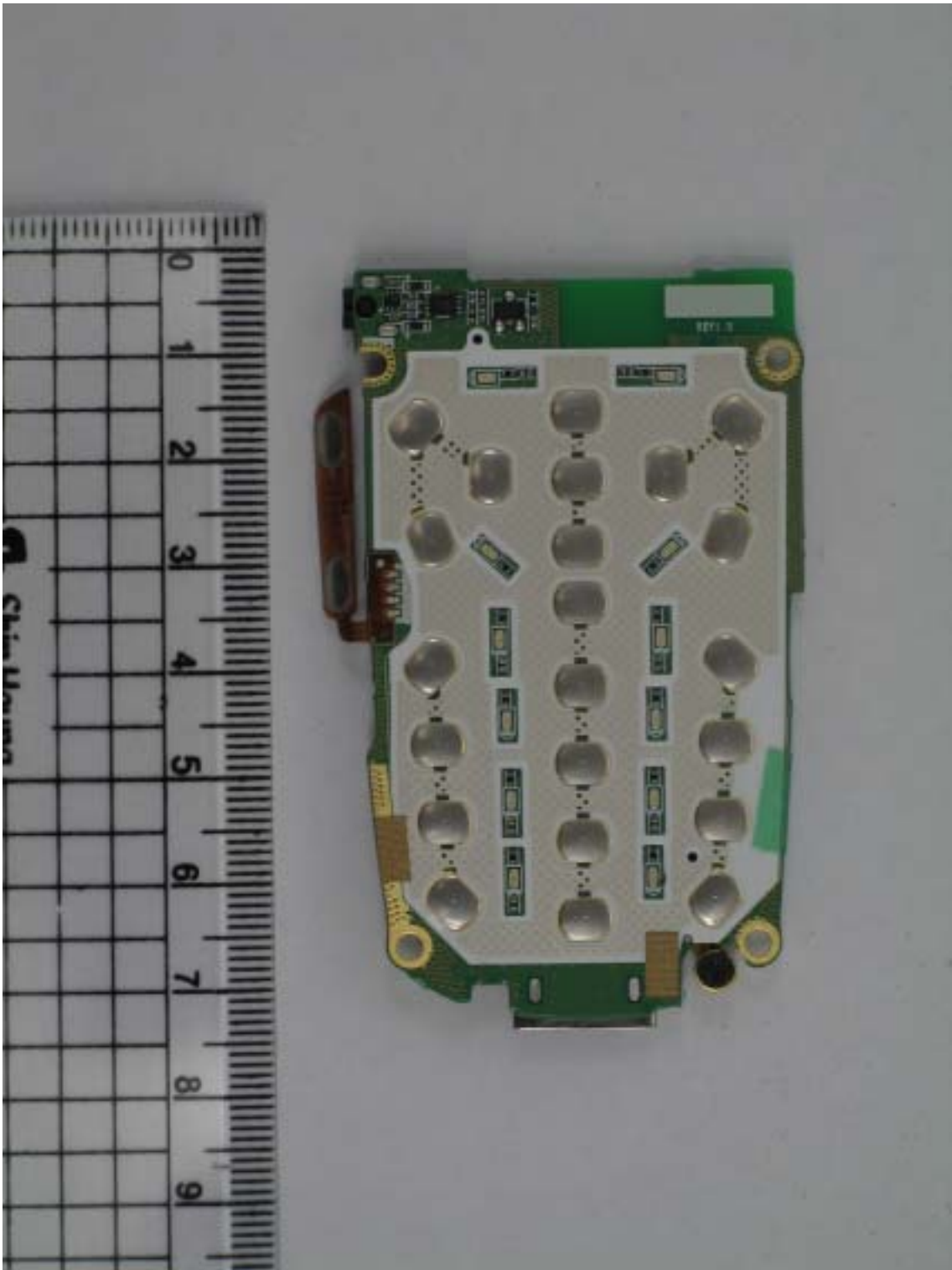
© 2005 SAMSUNG ELECTRONICS Co., Ltd.

SAMSUNG FCC ID: A3LSGHX497
Dual-Band GSM850/GSM1900 Phone



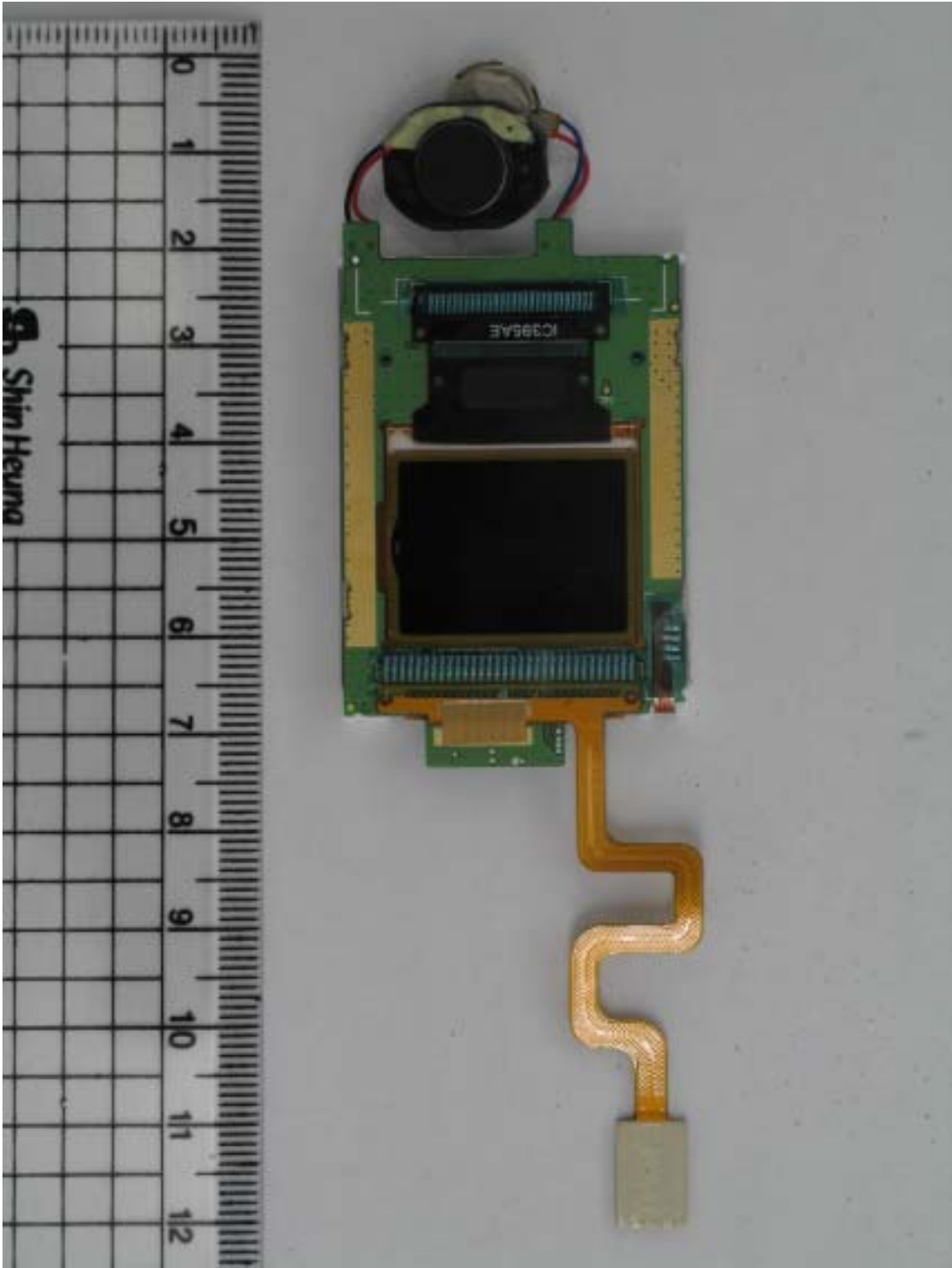
© 2005 SAMSUNG ELECTRONICS Co., Ltd.

*SAMSUNG FCC ID: A3LSGHX497
Dual-Band GSM850/GSM1900 Phone*



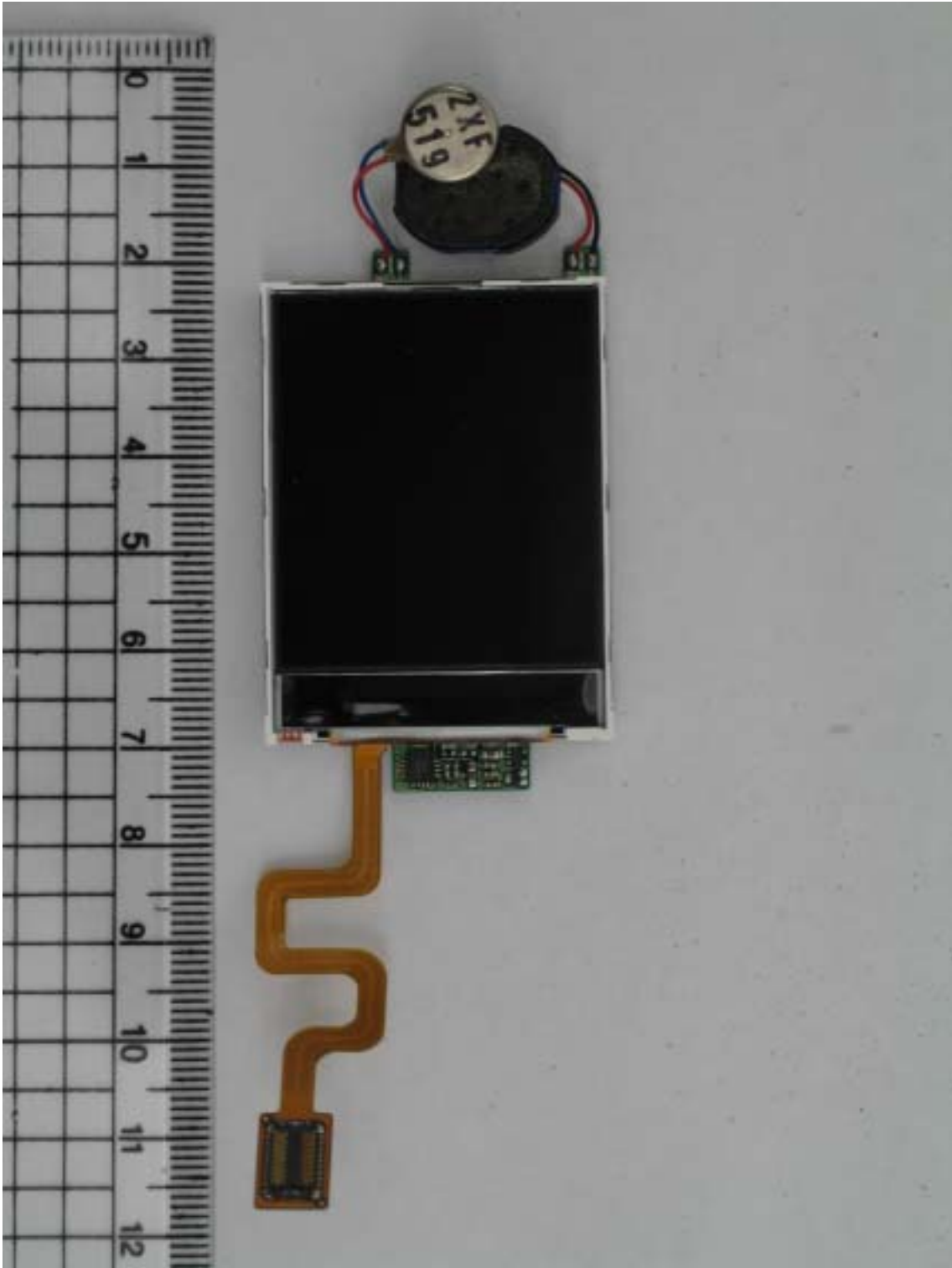
© 2005 SAMSUNG ELECTRONICS Co., Ltd.

*SAMSUNG FCC ID: A3LSGHX497
Dual-Band GSM850/GSM1900 Phone*



© 2005 SAMSUNG ELECTRONICS Co., Ltd.

SAMSUNG FCC ID: A3LSGHX497
Dual-Band GSM850/GSM1900 Phone



© 2005 SAMSUNG ELECTRONICS Co., Ltd.

SAMSUNG FCC ID: A3LSGHX497
Dual-Band GSM850/GSM1900 Phone



© 2005 SAMSUNG ELECTRONICS Co., Ltd.

SAMSUNG FCC ID: A3LSGHX497
Dual-Band GSM850/GSM1900 Phone



© 2005 SAMSUNG ELECTRONICS Co., Ltd.

SAMSUNG FCC ID: A3LSGHX497
Dual-Band GSM850/GSM1900 Phone



© 2005 SAMSUNG ELECTRONICS Co., Ltd.

SAMSUNG FCC ID: A3LSGHX497
Dual-Band GSM850/GSM1900 Phone



© 2005 SAMSUNG ELECTRONICS Co., Ltd.

*SAMSUNG FCC ID: A3LSGHX497
Dual-Band GSM850/GSM1900 Phone*



© 2005 SAMSUNG ELECTRONICS Co., Ltd.

SAMSUNG FCC ID: A3LSGHX497
Dual-Band GSM850/GSM1900 Phone