

# SAMSUNG FCC ID: A3LSGHS105 -- 1900MHz PCS GSM Head SAR

SAM Phantom; Right Cheek Section; Probe:ET3DV6 - SN1660; ConvF(5.20,5.20,5.20)

Med. Parameters Head 1900 MHz:  $\sigma = 1.37$  mho/m  $\epsilon_r = 40.8$   $\rho = 1.00$  g/cm<sup>3</sup>; Antenna Position -- fixed; Crest Factor 8.0

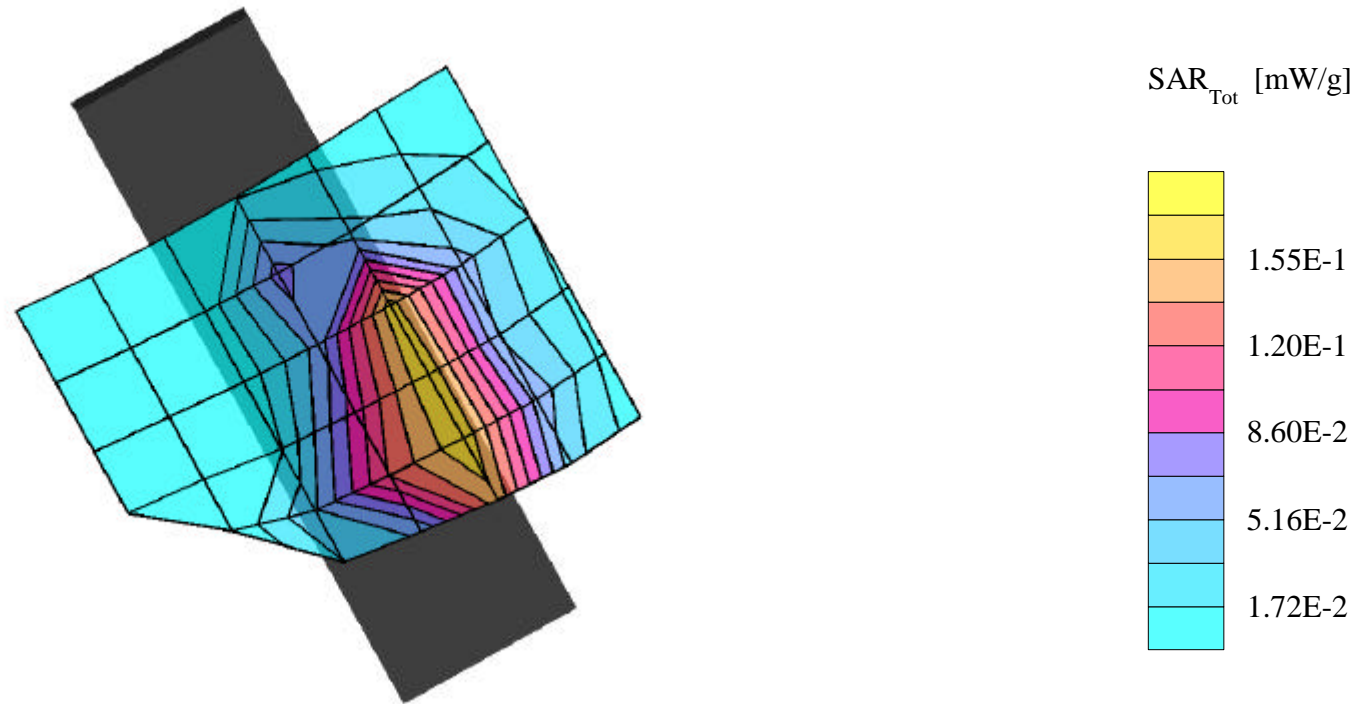
SAR (1g): 0.182 mW/g, SAR (10g): 0.108 mW/g

SAMSUNG GSM Single-Band Model: SGH-S105

1900 PCS GSM Mode, Ch.0512 [1850.2MHz]; Extended Battery; Meas. Ambient Temp. (C) - 23.4

Conducted Power=30.0dBm; Right Head Phantom, Cheek/Touch Position; Meas. Tissue Temp. (C) - 21.2

Test Date--07/15/2002 [FCC/OET Bulletin 65-Supplement C, July 2001]



# SAMSUNG FCC ID: A3LSGHS105 -- 1900MHz PCS GSM Head SAR

SAM Phantom; Left Cheek Section; Probe:ET3DV6 - SN1660; ConvF(5.20,5.20,5.20)

Med. Parameters Head 1900 MHz:  $\sigma = 1.37$  mho/m  $\epsilon_r = 40.8$   $\rho = 1.00$  g/cm<sup>3</sup>; Antenna Position -- fixed; Crest Factor 8.0

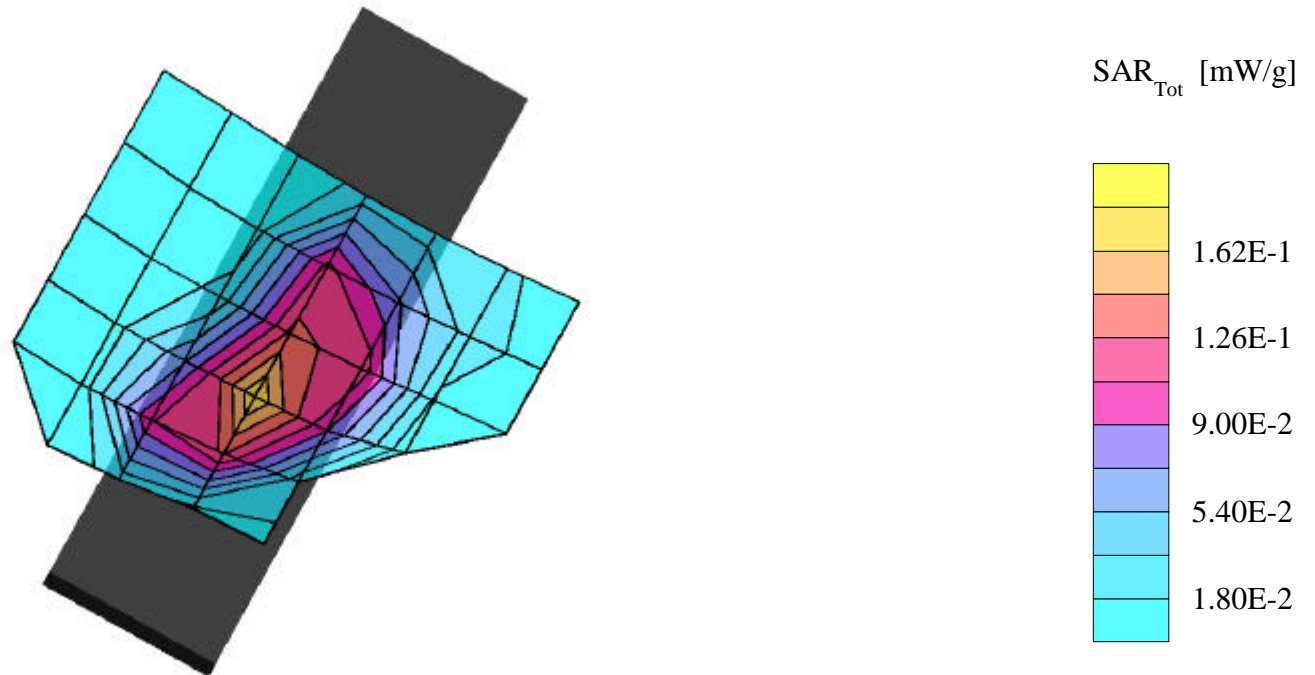
SAR (1g): 0.182 mW/g, SAR (10g): 0.119 mW/g

SAMSUNG GSM Single-Band Model: SGH-S105

1900 PCS GSM Mode, Ch.0512 [1850.2MHz]; Standard Battery; Meas. Ambient Temp. (C) - 23.4

Conducted Power=30.0dBm; Left Head Phantom, Cheek/Touch Position; Meas. Tissue Temp. (C) - 21.2

Test Date--07/15/2002 [FCC/OET Bulletin 65-Supplement C, July 2001]



# SAMSUNG FCC ID: A3LSGHS105 -- 1900MHz PCS GSM Head SAR

SAM Phantom; Left Cheek Section; Probe:ET3DV6 - SN1660; ConvF(5.20,5.20,5.20)

Med. Parameters Head 1900 MHz:  $\sigma = 1.37$  mho/m  $\epsilon_r = 40.8$   $\rho = 1.00$  g/cm<sup>3</sup>; Antenna Position -- fixed; Crest Factor 8.0

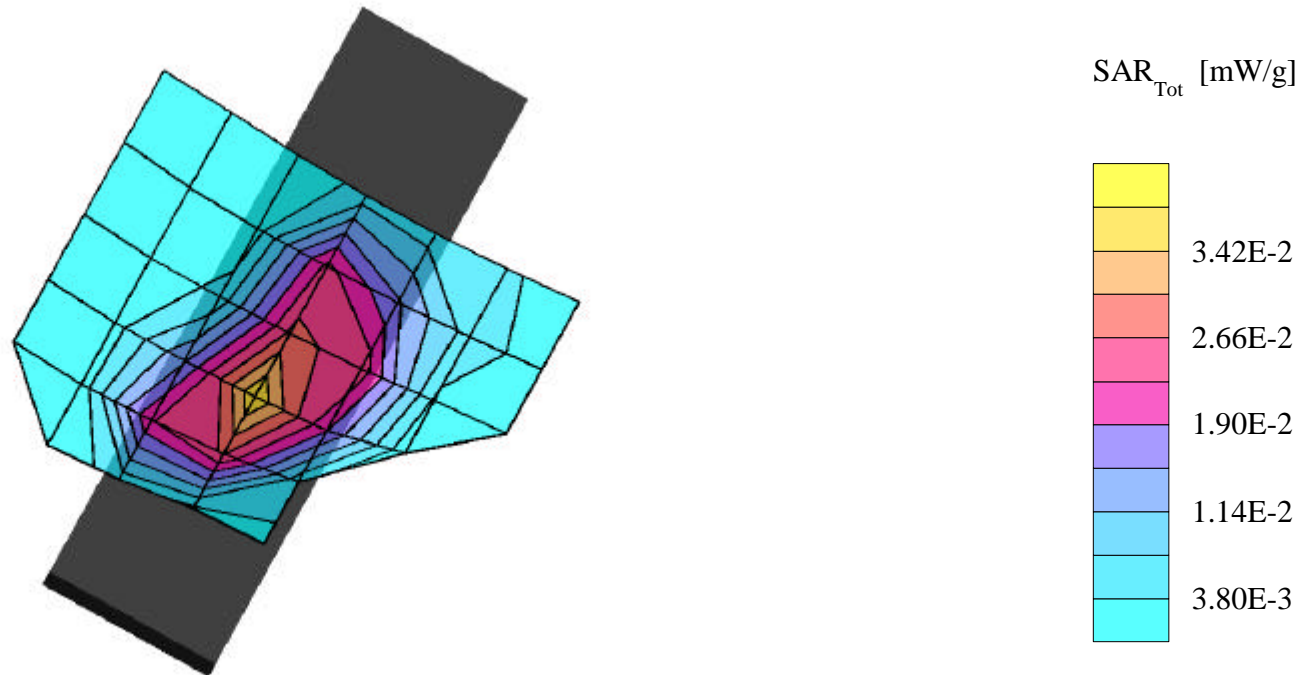
SAR (1g): 0.0394 mW/g, SAR (10g): 0.0253 mW/g

SAMSUNG GSM Single-Band Model: SGH-S105

1900 PCS GSM Mode, Ch.0512 [1850.2MHz]; Standard Battery; Meas. Ambient Temp. (C) - 23.4

Conducted Power=30.0dBm; Left Head Phantom, Ear/Tilt Position; Meas. Tissue Temp. (C) - 21.2

Test Date--07/15/2002 [FCC/OET Bulletin 65-Supplement C, July 2001]



# SAMSUNG FCC ID: A3LSGHS105 -- 1900MHz PCS GSM Head SAR

SAM Phantom; Right Cheek Section; Probe:ET3DV6 - SN1660; ConvF(5.20,5.20,5.20)

Med. Parameters Head 1900 MHz:  $\sigma = 1.37$  mho/m  $\epsilon_r = 40.8$   $\rho = 1.00$  g/cm<sup>3</sup>; Antenna Position -- fixed; Crest Factor 8.0

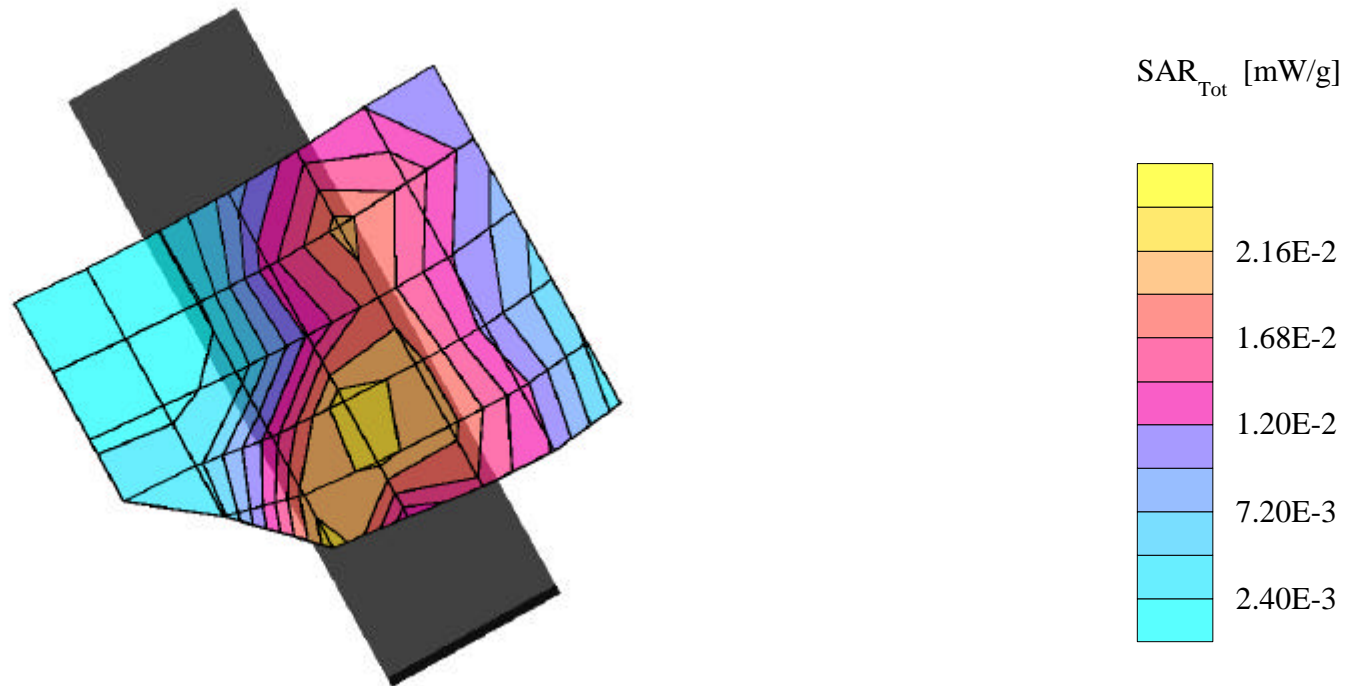
SAR (1g): 0.0301 mW/g, SAR (10g): 0.0107 mW/g

SAMSUNG GSM Single-Band Model: SGH-S105

1900 PCS GSM Mode, Ch.0661 [1880.0MHz]; Extended Battery; Meas. Ambient Temp. (C) - 23.4

Conducted Power=30.0dBm; Right Head Phantom, Ear/Tilt 15deg. Position; Meas. Tissue Temp. (C) - 21.2

Test Date--07/15/2002 [FCC/OET Bulletin 65-Supplement C, July 2001]



# SAMSUNG FCC ID: A3LSGHS105 -- 1900MHz PCS GSM Body SAR

SAM Phantom; Flat Section; Probe:ET3DV6 - SN1660 -- ConvF(4.80,4.80,4.80)

Med. Parameters 1900 MHz Muscle:  $\sigma = 1.54$  mho/m  $\epsilon_r = 54.6$   $\rho = 1.00$  g/cm<sup>3</sup>; Antenna Position -- Fixed; Crest Factor 8.0

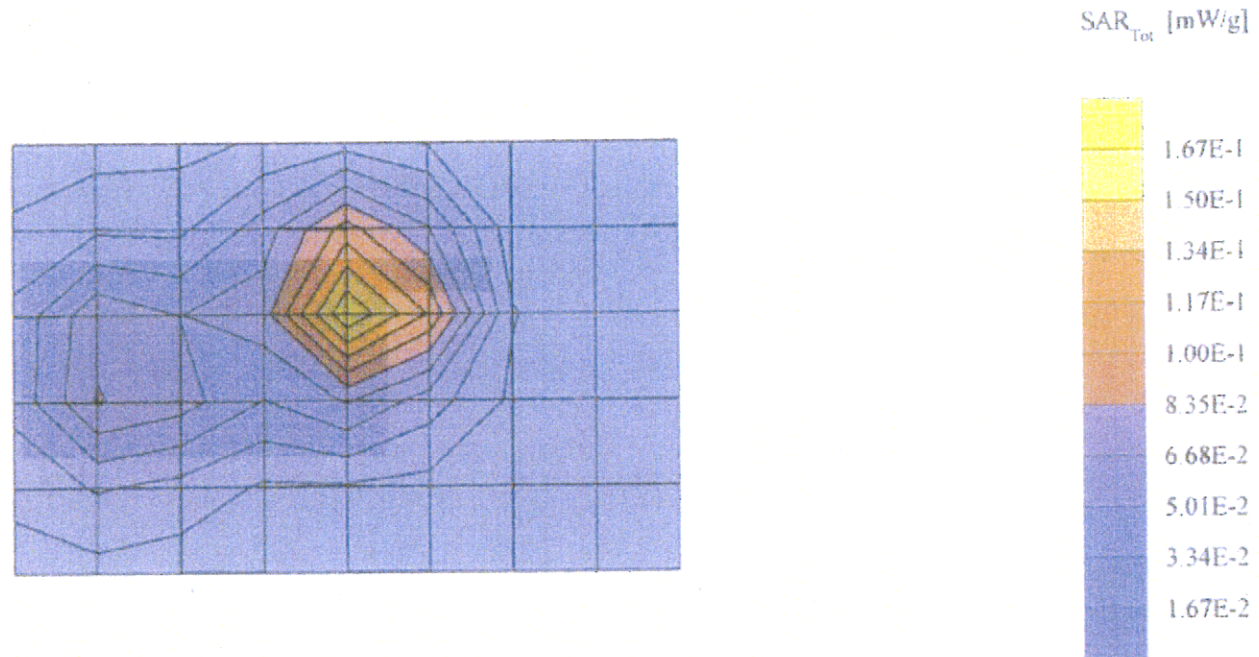
SAR (1g): 0.164 mW/g, SAR (10g): 0.088 mW/g

SAMSUNG GSM Single-Band Model: SGH-S105

1900 PCS GSM Mode, Ch.0512 [1850.20MHz]; Standard Battery; Flip = closed; Ambient Temp. (C) - 23.4

Conducted Power = 30.0 dBm; Spacing = 1.5cm from flat phantom to phone, w/o beltClip or holster Measured Tissue Temp. (C) - 20.3

Test Date -- 07/12/2002 [FCC/OET Bulletin 65 - Supplement C, July 2001]



# SAMSUNG FCC ID: A3LSGHS105 -- 1900MHz PCS GSM Head SAR

SAM Phantom; Flat Section; Probe:ET3DV6 - SN1660 -- ConvF(5.20,5.20,5.20)

Med. Parameters Head 1900 MHz:  $\sigma = 1.37$  mho/m  $\epsilon_r = 40.8$   $\rho = 1.00$  g/cm<sup>3</sup>; Antenna Position -- Fixed; Crest Factor 8.0

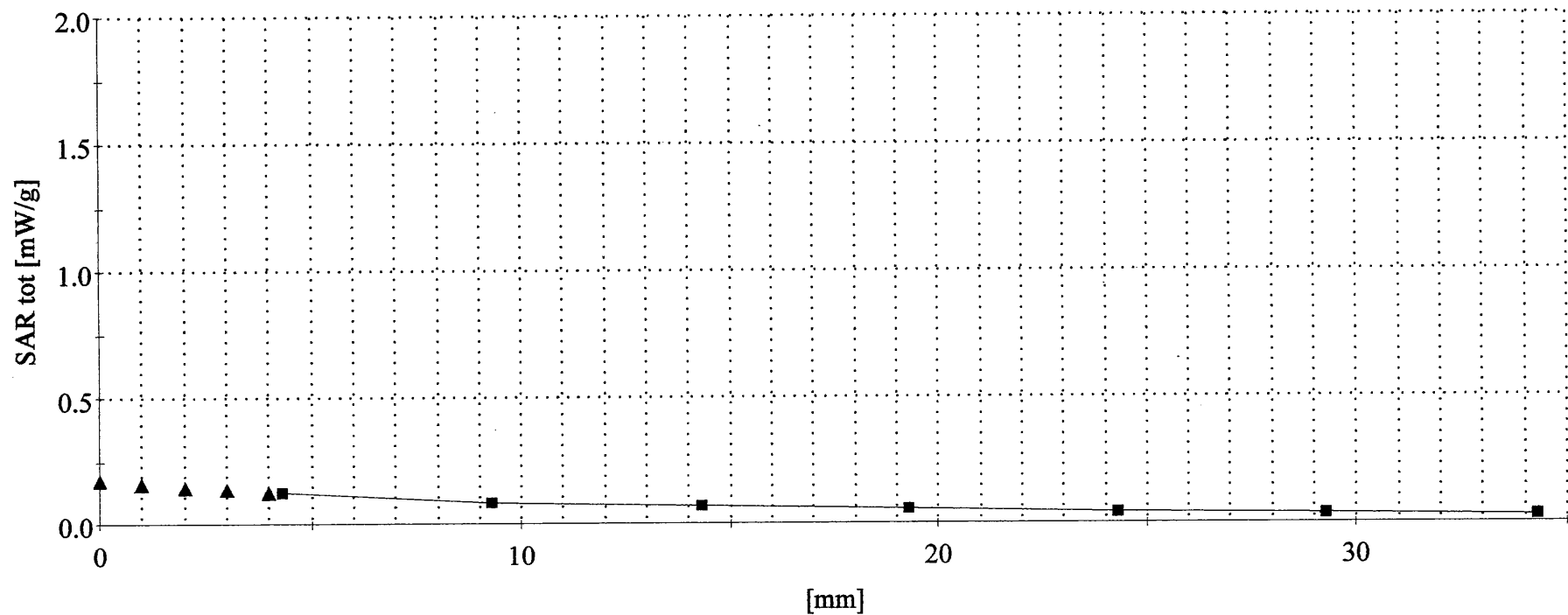
**SAR (1g): 0.182 mW/g, SAR (10g): 0.092 mW/g**

SAMSUNG GSM Single-Band Model: SGH-S105

1900 PCS GSM Mode, Ch.0512 [1850.2MHz]; Standard Battery; Meas. Ambient Temp. (C) - 23.4

Conducted Power=30.0dBm; Right Head Phantom, Cheek/Touch Position; Meas. Tissue Temp. (C) - 21.2

Test Date--07/15/2002 [FCC/OET Bulletin 65-Supplement C, July 2001]



# SAMSUNG FCC ID: A3LSGHS105 -- 1900MHz PCS GSM Body SAR

SAM Phantom; Flat Section; Probe:ET3DV6 - SN1660 -- ConvF(4.8,4.80,4.80)

Med. Parameters Body 1900 MHz:  $\sigma = 1.52$  mho/m  $\epsilon_r = 54.6$   $\rho = 1.00$  g/cm<sup>3</sup>; Antenna Position -- Fixed; Crest Factor 8.0

**SAR (1g): 0.164 mW/g, SAR (10g): 0.084 mW/g**

SAMSUNG GSM Single-Band Model: SGH-S105

1900 PCS GSM Mode, Ch.0512 [1850.2MHz]; Standard Battery; Meas. Ambient Temp. (°C) - 23.4

Conducted Power = 30.0 dBm; Spacing = 1.5cm from flat phantom to phone, w/o beltClip or holster Measured Tissue Temp. = 20.3°C

Test Date--07/08/2002 [FCC/OET Bulletin 65-Supplement C, July 2001]

