

DUT: Dipole 1900 MHz; Serial: 5d023

Program Name: 1900 Dipole Validation 2005.08.22

Procedure Name: 1900MHz @250mW

Procedure Notes: Meas.Tissue Temp(celsius)-21.6; Test Date-22/Aug/2005[OET Bulletin 65-Supplement C, July 2001]

Communication System: CW; Frequency: 1900 MHz; Duty Cycle: 1:1

Medium parameters used: $f = 1900$ MHz; $\sigma = 1.41$ mho/m; $\epsilon_r = 39.7$; $\rho = 1000$ kg/m³

Phantom section: Flat Section

DASY4 Configuration:

- Probe: EX3DV4 - SN3537; ConvF(8.29, 8.29, 8.29); Calibrated: 2004-12-15

- Sensor-Surface: 4mm (Mechanical Surface Detection)

- Electronics: DAE3 Sn468; Calibrated: 2004-12-07

- Phantom: SAM 1800/1900 MHz; Type: SAM; Serial: TP-1248

- Measurement SW: DASY4, V4.5 Build 19; Postprocessing SW: SEMCAD, V1.8 Build 146

1900MHz @250mW/Zoom Scan (5x5x7)/Cube 0: Measurement grid: dx=8mm, dy=8mm, dz=5mm

Reference Value = 88.8 V/m; Power Drift = -0.023 dB

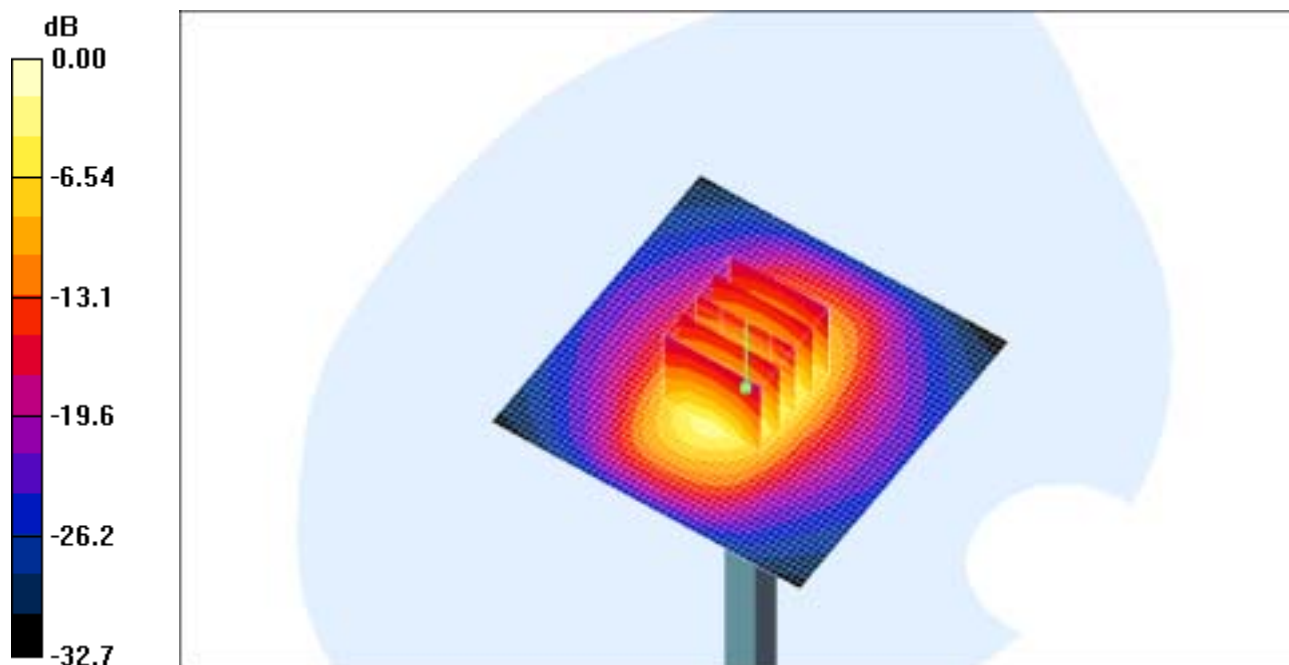
Peak SAR (extrapolated) = 18.5 W/kg

SAR(1 g) = 9.95 mW/g

Maximum value of SAR (measured) = 11.2 mW/g

1900MHz @250mW/Area Scan (51x51x1): Measurement grid: dx=20mm, dy=20mm

Maximum value of SAR (interpolated) = 15.2 mW/g



0 dB = 15.2mW/g