

SAMSUNG FCC ID : A3LSGHD407T 835MHz GSM850 Head SAR

DUT: SGH-D407T; Serial: FD-093-A

Program Name: SGH-D407T GSM850 Right (Job No. : FD-093)

Procedure Name: Cheek/Touch, Ch.251, Ant.Fixed, Bat.Standard

Procedure Notes: Meas.Tissue Temp(celsius)-21.8, Ambient Temp-22.0 Test Date-29/May/2006[OET Bulletin 65-Supplement C, July 2001]

Communication System: GSM850; Frequency: 848.8 MHz;Duty Cycle: 1:8.3

Medium parameters used:  $f = 848.8$  MHz;  $\sigma = 0.91$  mho/m;  $\epsilon_r = 41$ ;  $\rho = 1000$  kg/m<sup>3</sup>

Phantom section: Right Section

DASY4 Configuration:

- Probe: EX3DV4 - SN3537; ConvF(9.31, 9.31, 9.31); Calibrated: 2005-11-22
- Sensor-Surface: 4mm (Mechanical Surface Detection)
- Electronics: DAE3 Sn468; Calibrated: 2006-01-27
- Phantom: SAM PHANTOM #2; Type: SAM; Serial: TP-1248
- Measurement SW: DASY4, V4.6 Build 23; Postprocessing SW: SEMCAD, V1.8 Build 160

**Cheek/Touch, Ch.251, Ant.Intenna, Bat.Standard/Area Scan (51x71x1):** Measurement grid: dx=20mm, dy=20mm

Maximum value of SAR (interpolated) = 0.830 mW/g

**Cheek/Touch, Ch.251, Ant.Intenna, Bat.Standard/Zoom Scan (5x5x7)/Cube 0:**

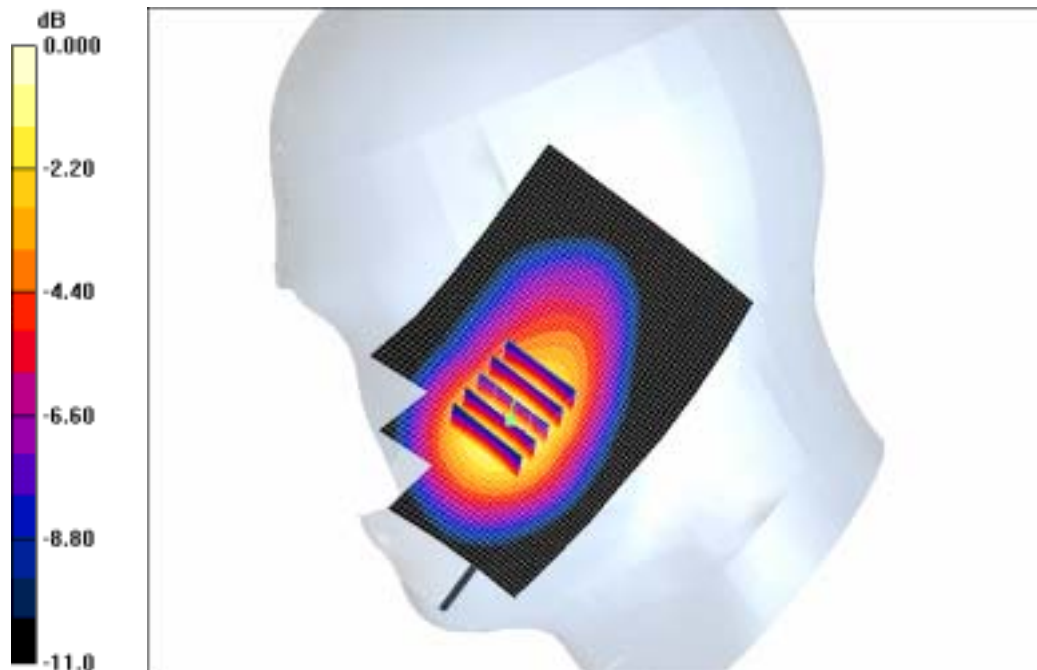
Measurement grid: dx=8mm, dy=8mm, dz=5mm

Reference Value = 9.10 V/m; Power Drift = 0.184 dB

Peak SAR (extrapolated) = 1.20 W/kg

**SAR(1 g) = 0.821 mW/g**

Maximum value of SAR (measured) = 0.881 mW/g



0 dB = 0.881mW/g

SAMSUNG FCC ID : A3LSGHD407T 835MHz GSM850 Head SAR

DUT: SGH-D407T; Serial: FD-093-A

Program Name: SGH-D407T GSM850 Right(Job No. : FD-093)

Procedure Name: Ear/Tilt, Ch.190, Ant. Fixed, Bat.Standard

Procedure Notes: Meas.Tissue Temp(celsius)-21.8, Ambient Temp-22.0 Test Date-29/May/2006[OET Bulletin 65-Supplement C, July 2001]

Communication System: GSM850; Frequency: 836.6 MHz;Duty Cycle: 1:8.3

Medium parameters used:  $f = 836.6$  MHz;  $\sigma = 0.91$  mho/m;  $\epsilon_r = 41$ ;  $\rho = 1000$  kg/m<sup>3</sup>

Phantom section: Right Section

DASY4 Configuration:

- Probe: EX3DV4 - SN3537; ConvF(9.31, 9.31, 9.31); Calibrated: 2005-11-22
- Sensor-Surface: 4mm (Mechanical Surface Detection)
- Electronics: DAE3 Sn468; Calibrated: 2006-01-27
- Phantom: SAM PHANTOM #2; Type: SAM; Serial: TP-1248
- Measurement SW: DASY4, V4.6 Build 23; Postprocessing SW: SEMCAD, V1.8 Build 160

Ear/Tilt, Ch.190, Ant.Intenna, Bat.Standard/Area Scan (51x71x1): Measurement grid:

$dx=20$ mm,  $dy=20$ mm

Maximum value of SAR (interpolated) = 0.213 mW/g

Ear/Tilt, Ch.190, Ant.Intenna, Bat.Standard/Zoom Scan (5x5x7)/Cube 0: Measurement

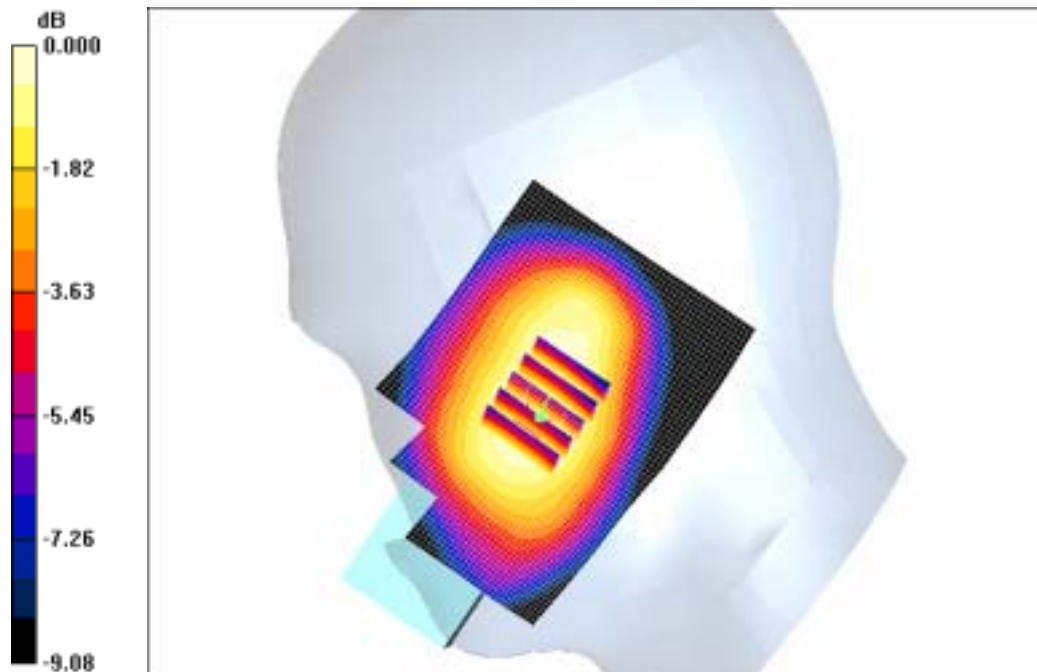
grid:  $dx=8$ mm,  $dy=8$ mm,  $dz=5$ mm

Reference Value = 10.1 V/m; Power Drift = -0.121 dB

Peak SAR (extrapolated) = 0.253 W/kg

**SAR(1 g) = 0.193 mW/g**

Maximum value of SAR (measured) = 0.202 mW/g



0 dB = 0.202mW/g

SAMSUNG FCC ID : A3LSGHD407T 835MHz GSM850 Head SAR

DUT: SGH-D407T; Serial: FD-093-A

Program Name: SGH-D407T GSM850 Left(Job No. : FD-093)

Procedure Name: Cheek/Touch, Ch.251, Ant.Fixed, Bat.Standard

Procedure Notes: Meas.Tissue Temp(celsius)-21.8, Ambient Temp-22.0 Test Date-29/May/2006[OET Bulletin 65-Supplement C, July 2001]

Communication System: GSM850; Frequency: 848.8 MHz;Duty Cycle: 1:8.3

Medium parameters used:  $f = 848.8$  MHz;  $\sigma = 0.91$  mho/m;  $\epsilon_r = 41$ ;  $\rho = 1000$  kg/m<sup>3</sup>

Phantom section: Left Section

DASY4 Configuration:

- Probe: EX3DV4 - SN3537; ConvF(9.31, 9.31, 9.31); Calibrated: 2005-11-22
- Sensor-Surface: 4mm (Mechanical Surface Detection)
- Electronics: DAE3 Sn468; Calibrated: 2006-01-27
- Phantom: SAM PHANTOM #2; Type: SAM; Serial: TP-1248
- Measurement SW: DASY4, V4.6 Build 23; Postprocessing SW: SEMCAD, V1.8 Build 160

**Cheek/Touch, Ch.251, Ant.Fixed, Bat.Standard/Zoom Scan (5x5x7)/Cube 0:**

Measurement grid: dx=8mm, dy=8mm, dz=5mm

Reference Value = 8.32 V/m; Power Drift = 0.021 dB

Peak SAR (extrapolated) = 1.21 W/kg

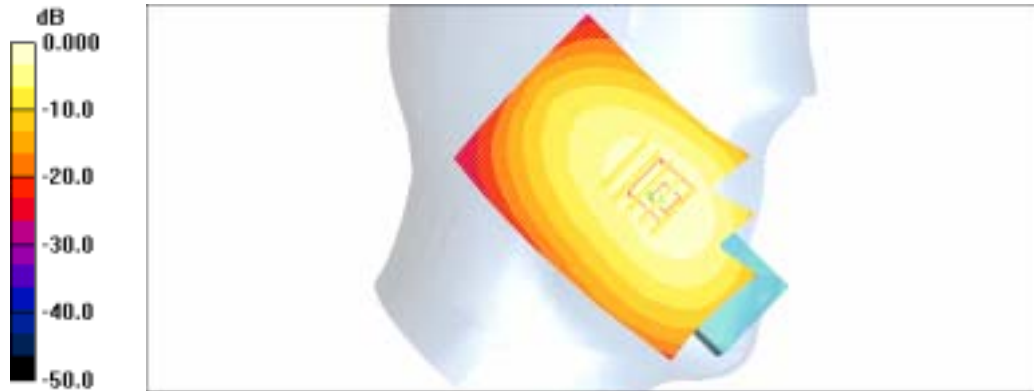
**SAR(1 g) = 0.844 mW/g**

Maximum value of SAR (measured) = 0.885 mW/g

**Cheek/Touch, Ch.251, Ant.Fixed, Bat.Standard/Area Scan (51x71x1): Measurement**

grid: dx=20mm, dy=20mm

Maximum value of SAR (interpolated) = 0.827 mW/g



0 dB = 0.827mW/g

SAMSUNG FCC ID : A3LSGHD407T 835MHz GSM850 Head SAR

DUT: SGH-D407T; Serial: FD-093-A

Program Name: SGH-D407 GSM850 Left(Job No. : FD-093)

Procedure Name: Ear/Tilt, Ch.190, Ant.Fixed, Bat.Standard

Procedure Notes: Meas.Tissue Temp(celsius)-21.8, Ambient Temp-22.0 Test Date-29/May/2006[OET Bulletin 65-Supplement C, July 2001]

Communication System: GSM850; Frequency: 836.6 MHz;Duty Cycle: 1:8.3

Medium parameters used:  $f = 836.6$  MHz;  $\sigma = 0.91$  mho/m;  $\epsilon_r = 41$ ;  $\rho = 1000$  kg/m<sup>3</sup>

Phantom section: Left Section

DASY4 Configuration:

- Probe: EX3DV4 - SN3537; ConvF(9.31, 9.31, 9.31); Calibrated: 2005-11-22
- Sensor-Surface: 4mm (Mechanical Surface Detection)
- Electronics: DAE3 Sn468; Calibrated: 2006-01-27
- Phantom: SAM PHANTOM #2; Type: SAM; Serial: TP-1248
- Measurement SW: DASY4, V4.6 Build 23; Postprocessing SW: SEMCAD, V1.8 Build 160

Ear/Tilt, Ch.190, Ant.Fixed, Bat.Standard/Zoom Scan (5x5x7)/Cube 0: Measurement grid: dx=8mm, dy=8mm, dz=5mm

Reference Value = 9.77 V/m; Power Drift = 0.032 dB

Peak SAR (extrapolated) = 0.285 W/kg

**SAR(1 g) = 0.221 mW/g**

Maximum value of SAR (measured) = 0.230 mW/g

Ear/Tilt, Ch.190, Ant.Fixed, Bat.Standard/Area Scan (51x71x1): Measurement grid:

dx=20mm, dy=20mm

Maximum value of SAR (interpolated) = 0.236 mW/g



0 dB = 0.236mW/g

SAMSUNG FCC ID : A3LSGHD407T 835MHz GSM850 Face SAR

DUT: SGH-D407T(PTT); Serial: FD-093-A

Program Name: SGH-D407T GSM850 PTT (Job No. : FD-093)

Procedure Name: PTT, Ch.190, Ant.Fixed, Bat.Standard

Procedure Notes: Meas.Tissue Temp(celsius)-21.8, Ambient Temp-22.0 Test Date-29/May/2006[OET Bulletin 65-Supplement C, July 2001]

Communication System: GSM850; Frequency: 836.6 MHz;Duty Cycle: 1:8.3

Medium parameters used:  $f = 836.6$  MHz;  $\sigma = 0.91$  mho/m;  $\epsilon_r = 41$ ;  $\rho = 1000$  kg/m<sup>3</sup>

Phantom section: Flat Section

DASY4 Configuration:

- Probe: EX3DV4 - SN3537; ConvF(9.31, 9.31, 9.31); Calibrated: 2005-11-22
- Sensor-Surface: 4mm (Mechanical Surface Detection)
- Electronics: DAE3 Sn468; Calibrated: 2006-01-27
- Phantom: SAM PHANTOM #2; Type: SAM; Serial: TP-1248
- Measurement SW: DASY4, V4.6 Build 23; Postprocessing SW: SEMCAD, V1.8 Build 160

**PTT, Ch.190, Ant.Fixed, Bat.Standard/Area Scan (51x71x1):** Measurement grid:

$dx=20$ mm,  $dy=20$ mm

Maximum value of SAR (interpolated) = 0.112 mW/g

**PTT, Ch.190, Ant.Fixed, Bat.Standard/Zoom Scan (5x5x7)/Cube 0:** Measurement grid:

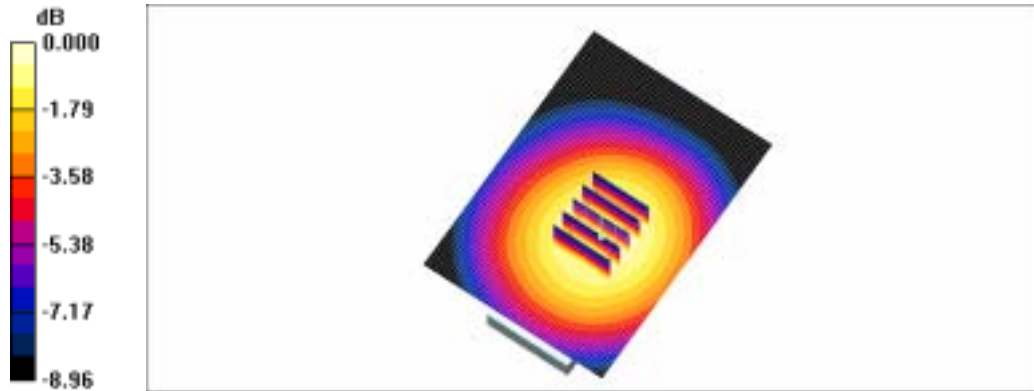
$dx=8$ mm,  $dy=8$ mm,  $dz=5$ mm

Reference Value = 10.1 V/m; Power Drift = -0.061 dB

Peak SAR (extrapolated) = 0.144 W/kg

**SAR(1 g) = 0.106 mW/g**

Maximum value of SAR (measured) = 0.112 mW/g



0 dB = 0.112mW/g

SAMSUNG FCC ID : A3LSGHD407T 835MHz GSM850 Head SAR

DUT: SGH-D407T; Serial: FD-093-A

Program Name: SGH-D407T GSM850 Left(Job No. : FD-093)

Procedure Name: Cheek/Touch, Ch.251, Ant.Fixed, Bat.Standard

Procedure Notes: Meas.Tissue Temp(celsius)-21.8, Ambient Temp-22.0 Test Date-29/May/2006[OET Bulletin 65-Supplement C, July 2001]

Communication System: GSM850; Frequency: 848.8 MHz;Duty Cycle: 1:8.3

Medium parameters used:  $f = 848.8$  MHz;  $\sigma = 0.91$  mho/m;  $\epsilon_r = 41$ ;  $\rho = 1000$  kg/m<sup>3</sup>

Phantom section: Left Section

DASY4 Configuration:

- Probe: EX3DV4 - SN3537; ConvF(9.31, 9.31, 9.31); Calibrated: 2005-11-22
- Sensor-Surface: 4mm (Mechanical Surface Detection)
- Electronics: DAE3 Sn468; Calibrated: 2006-01-27
- Phantom: SAM PHANTOM #2; Type: SAM; Serial: TP-1248
- Measurement SW: DASY4, V4.6 Build 23; Postprocessing SW: SEMCAD, V1.8 Build 160

**Cheek/Touch, Ch.251, Ant.Fixed, Bat.Standard/Zoom Scan (5x5x7)/Cube 0:**

Measurement grid: dx=8mm, dy=8mm, dz=5mm

Reference Value = 8.32 V/m; Power Drift = 0.021 dB

Peak SAR (extrapolated) = 1.21 W/kg

**SAR(1 g) = 0.844 mW/g**

Maximum value of SAR (measured) = 0.885 mW/g

**Cheek/Touch, Ch.251, Ant.Fixed, Bat.Standard/Area Scan (51x71x1):** Measurement

grid: dx=20mm, dy=20mm

Maximum value of SAR (interpolated) = 0.827 mW/g



SAMSUNG FCC ID : A3LSGHD407T 835MHz GSM850 Body SAR

DUT: SGH-D407T; Serial: FD-093-A

Program Name: SGH-D407T GSM850 Body (Job No. : FD-093)

Procedure Name: Body, Ch.251, Ant. Fixed, Bat.Standard

Procedure Notes: Meas.Tissue Temp(celsius)-21.6, Ambient Temp-22.4Test Date-29/May/2006[OET Bulletin 65-Supplement C, July 2001]

Communication System: GSM 850 (GPRS); Frequency: 848.8 MHz;Duty Cycle: 1:4.15  
Medium parameters used:  $f = 848.8$  MHz;  $\sigma = 0.99$  mho/m;  $\epsilon_r = 53.2$ ;  $\rho = 1000$  kg/m<sup>3</sup>

Phantom section: Flat Section

DASY4 Configuration:

- Probe: EX3DV4 - SN3537; ConvF(9.57, 9.57, 9.57); Calibrated: 2005-11-22
- Sensor-Surface: 4mm (Mechanical Surface Detection)
- Electronics: DAE3 Sn468; Calibrated: 2006-01-27
- Phantom: SAM PHANTOM #1; Type: SAM; Serial: TP-1247
- Measurement SW: DASY4, V4.6 Build 23; Postprocessing SW: SEMCAD, V1.8 Build 160

**Body, Ch.251, Ant.Intenna, Bat.Standard/Area Scan (51x71x1):** Measurement grid:

dx=20mm, dy=20mm

Maximum value of SAR (interpolated) = 1.21 mW/g

**Body, Ch.251, Ant.Intenna, Bat.Standard/Zoom Scan (5x5x7)/Cube 0:** Measurement grid:

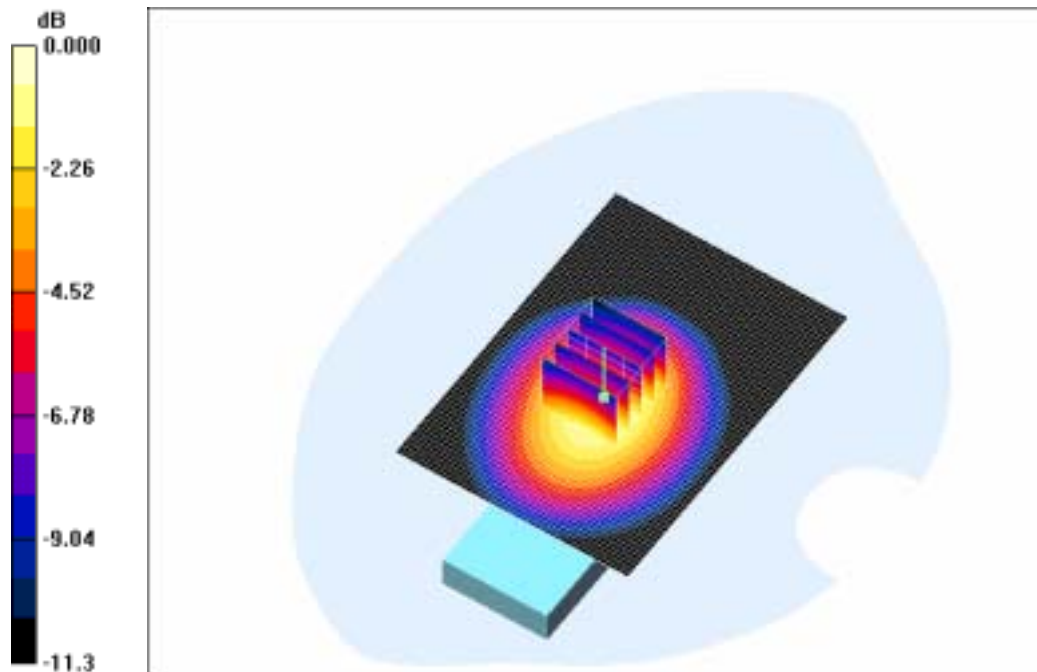
dx=8mm, dy=8mm, dz=5mm

Reference Value = 30.9 V/m; Power Drift = 0.161 dB

Peak SAR (extrapolated) = 1.58 W/kg

**SAR(1 g) = 1.1 mW/g**

Maximum value of SAR (measured) = 1.18 mW/g



0 dB = 1.18mW/g

SAMSUNG FCC ID : A3LSGHD407T 835MHz GSM850 Body SAR

DUT: SGH-D407T; Serial: FD-093-A

Program Name: SGH-D407T GSM850 Body (Job No. : FD-093)

Procedure Name: Body, Ch.251, Ant. Fixed, Bat.Standard

Procedure Notes: Meas.Tissue Temp(celsius)-21.6, Ambient Temp-22.4 Test Date-29/May/2006 [OET Bulletin 65-Supplement C, July 2001]

Communication System: GSM 850 (GPRS); Frequency: 848.8 MHz; Duty Cycle: 1:4.15  
Medium parameters used:  $f = 848.8$  MHz;  $\sigma = 0.99$  mho/m;  $\epsilon_r = 53.2$ ;  $\rho = 1000$  kg/m<sup>3</sup>

Phantom section: Flat Section

DASY4 Configuration:

- Probe: EX3DV4 - SN3537; ConvF(9.57, 9.57, 9.57); Calibrated: 2005-11-22
- Sensor - Surface: 4mm (Mechanical Surface Detection)
- Electronics: DAE3 Sn468; Calibrated: 2006-01-27
- Phantom: SAM PHANTOM #1; Type: SAM; Serial: TP-1247
- Measurement SW: DASY4, V4.6 Build 23; Postprocessing SW: SEMCAD, V1.8 Build 160

**Body, Ch.251, Ant.Intenna, Bat.Standard/Area Scan (51x71x1):** Measurement grid:

dx=20mm, dy=20mm

Maximum value of SAR (interpolated) = 1.21 mW/g

**Body, Ch.251, Ant.Intenna, Bat.Standard/Zoom Scan (5x5x7)/Cube 0:** Measurement grid:

dx=8mm, dy=8mm, dz=5mm

Reference Value = 30.9 V/m; Power Drift = 0.161 dB

Peak SAR (extrapolated) = 1.58 W/kg

**SAR(1 g) = 1.1 mW/g**

Maximum value of SAR (measured) = 1.18 mW/g



SAMSUNG FCC ID : A3LSGHD407T 1900MHz GSM1900 Head SAR

DUT: SGH-D407T; Serial: FD-093-A

Program Name: SGH-D407T GSM1900 Right (Job No. : FD-093)

Procedure Name: Cheek/Touch, Ch.512, Ant. Fixed, Bat.Standard

Procedure Notes: Meas.Tissue Temp(celsius)-20.9, Ambient Temp-21.0;Test Date-30/May/2006[OET Bulletin 65-Supplement C, July 2001]

Communication System: GSM 1900; Frequency: 1850.2 MHz;Duty Cycle: 1:8.3

Medium parameters used:  $f = 1850.2$  MHz;  $\sigma = 1.42$  mho/m;  $\epsilon_r = 38.8$ ;  $\rho = 1000$  kg/m<sup>3</sup>

Phantom section: Right Section

DASY4 Configuration:

- Probe: EX3DV4 - SN3537; ConvF(8.04, 8.04, 8.04); Calibrated: 2005-11-22
- Sensor-Surface: 4mm (Mechanical Surface Detection)
- Electronics: DAE3 Sn468; Calibrated: 2006-01-27
- Phantom: SAM PHANTOM #1; Type: SAM; Serial: TP-1247
- Measurement SW: DASY4, V4.6 Build 23; Postprocessing SW: SEMCAD, V1.8 Build 160

**Cheek/Touch, Ch.512, Ant.Intenna, Bat.Standard/Area Scan (51x71x1):** Measurement grid: dx=20mm, dy=20mm

Maximum value of SAR (interpolated) = 0.619 mW/g

**Cheek/Touch, Ch.512, Ant.Intenna, Bat.Standard/Zoom Scan (5x5x7)/Cube 0:**

Measurement grid: dx=8mm, dy=8mm, dz=5mm

Reference Value = 5.98 V/m; Power Drift = 0.115 dB

Peak SAR (extrapolated) = 0.956 W/kg

**SAR(1 g) = 0.548 mW/g**

Maximum value of SAR (measured) = 0.593 mW/g



0 dB = 0.593mW/g

SAMSUNG FCC ID : A3LSGHD407T 1900MHz GSM1900 Head SAR

DUT: SGH-D407T; Serial: FD-093-A

Program Name: SGH-D407T GSM1900 Right (Job No. : FD-093)

Procedure Name: Ear/Tilt, Ch.661, Ant. Fixed, Bat.Standard

Procedure Notes: Meas.Tissue Temp(celsius)-20.9, Ambient Temp-21.0;Test Date-30/May/2006[OET Bulletin 65-Supplement C, July 2001]

Communication System: GSM 1900; Frequency: 1880 MHz;Duty Cycle: 1:8.3

Medium parameters used:  $f = 1880$  MHz;  $\sigma = 1.42$  mho/m;  $\epsilon_r = 38.8$ ;  $\rho = 1000$  kg/m<sup>3</sup>

Phantom section: Right Section

DASY4 Configuration:

- Probe: EX3DV4 - SN3537; ConvF(8.04, 8.04, 8.04); Calibrated: 2005-11-22
- Sensor-Surface: 4mm (Mechanical Surface Detection)
- Electronics: DAE3 Sn468; Calibrated: 2006-01-27
- Phantom: SAM PHANTOM #1; Type: SAM; Serial: TP-1247
- Measurement SW: DASY4, V4.6 Build 23; Postprocessing SW: SEMCAD, V1.8 Build 160

Ear/Tilt, Ch.661, Ant.Intenna, Bat.Standard/Area Scan (51x71x1): Measurement grid:

$dx=20$ mm,  $dy=20$ mm

Maximum value of SAR (interpolated) = 0.069 mW/g

Ear/Tilt, Ch.661, Ant.Intenna, Bat.Standard/Zoom Scan (5x5x7)/Cube 0: Measurement

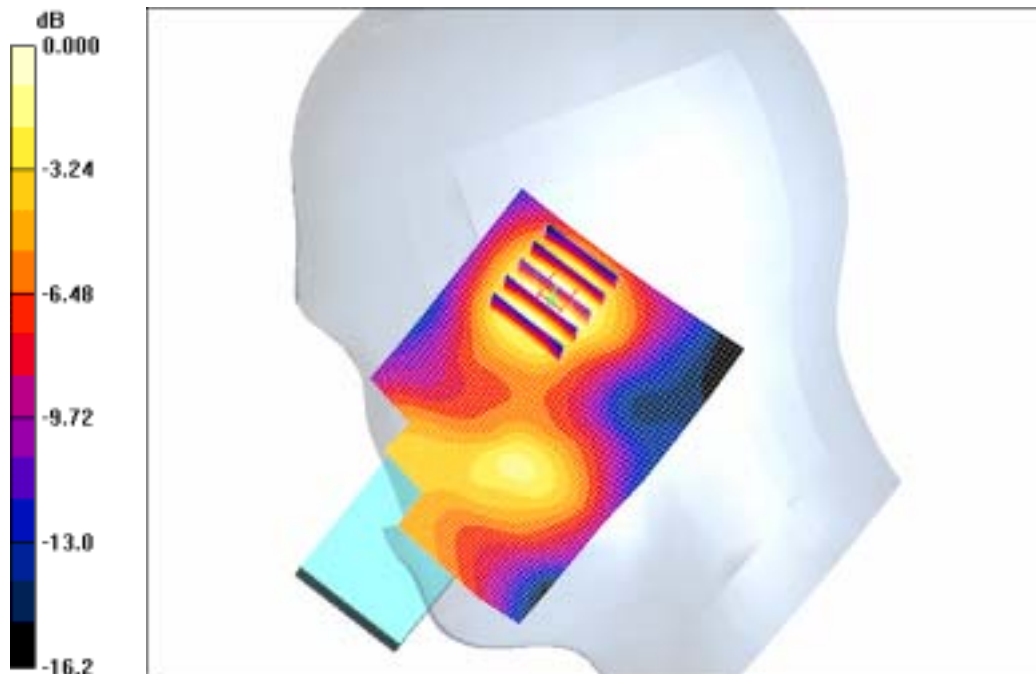
grid:  $dx=8$ mm,  $dy=8$ mm,  $dz=5$ mm

Reference Value = 5.10 V/m; Power Drift = -0.168 dB

Peak SAR (extrapolated) = 0.094 W/kg

**SAR(1 g) = 0.059 mW/g**

Maximum value of SAR (measured) = 0.064 mW/g



0 dB = 0.064mW/g

SAMSUNG FCC ID : A3LSGHD407T 1900MHz GSM1900 Head SAR

DUT: SGH-D407T; Serial: FD-093-A

Program Name: SGH-D407T GSM1900 Left (Job No. : FD-093)

Procedure Name: Cheek/Touch, Ch.512, Ant.Fixed, Bat.Standard

Procedure Notes: Meas.Tissue Temp(celsius)-20.9, Ambient Temp-21.0;Test Date-30/May/2006[OET Bulletin 65-Supplement C, July 2001]

Communication System: GSM 1900; Frequency: 1850.2 MHz;Duty Cycle: 1:8.3

Medium parameters used:  $f = 1850.2$  MHz;  $\sigma = 1.42$  mho/m;  $\epsilon_r = 38.8$ ;  $\rho = 1000$  kg/m<sup>3</sup>

Phantom section: Left Section

DASY4 Configuration:

- Probe: EX3DV4 - SN3537; ConvF(8.04, 8.04, 8.04); Calibrated: 2005-11-22
- Sensor-Surface: 4mm (Mechanical Surface Detection)
- Electronics: DAE3 Sn468; Calibrated: 2006-01-27
- Phantom: SAM PHANTOM #1; Type: SAM; Serial: TP-1247
- Measurement SW: DASY4, V4.6 Build 23; Postprocessing SW: SEMCAD, V1.8 Build 160

**Cheek/Touch, Ch.512, Ant.Fixed, Bat.Standard/Area Scan (51x71x1):** Measurement grid: dx=20mm, dy=20mm

Maximum value of SAR (interpolated) = 0.574 mW/g

**Cheek/Touch, Ch.512, Ant.Fixed, Bat.Standard/Zoom Scan (5x5x7)/Cube 0:**

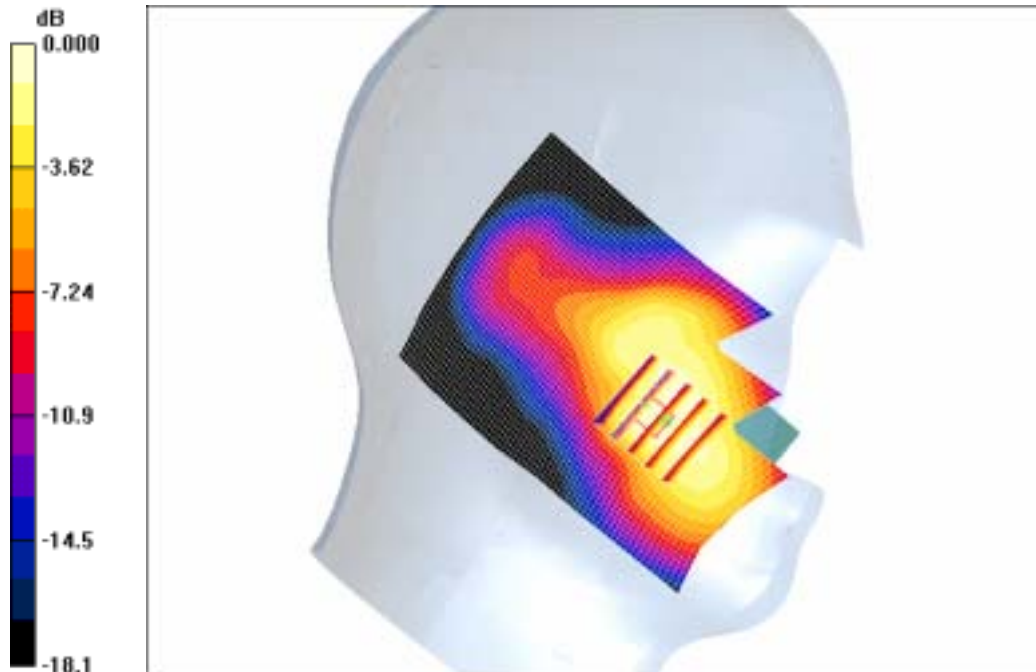
Measurement grid: dx=8mm, dy=8mm, dz=5mm

Reference Value = 14.3 V/m; Power Drift = 0.028 dB

Peak SAR (extrapolated) = 0.723 W/kg

**SAR(1 g) = 0.486 mW/g**

Maximum value of SAR (measured) = 0.517 mW/g



0 dB = 0.517mW/g

SAMSUNG FCC ID : A3LSGHD407T 1900MHz GSM1900 Head SAR

DUT: SGH-D407T; Serial: FD-093-A

Program Name: SGH-D407T GSM1900 Left (Job No. : FD-093)

Procedure Name: Ear/Tilt, Ch.661, Ant.Fixed, Bat.Standard

Procedure Notes: Meas.Tissue Temp(celsius)-20.9, Ambient Temp-21.0;Test Date-30/May/2006[OET Bulletin 65-Supplement C, July 2001]

Communication System: GSM 1900; Frequency: 1880 MHz;Duty Cycle: 1:8.3

Medium parameters used:  $f = 1880$  MHz;  $\sigma = 1.42$  mho/m;  $\epsilon_r = 38.8$ ;  $\rho = 1000$  kg/m<sup>3</sup>

Phantom section: Left Section

DASY4 Configuration:

- Probe: EX3DV4 - SN3537; ConvF(8.04, 8.04, 8.04); Calibrated: 2005-11-22
- Sensor-Surface: 4mm (Mechanical Surface Detection)
- Electronics: DAE3 Sn468; Calibrated: 2006-01-27
- Phantom: SAM PHANTOM #1; Type: SAM; Serial: TP-1247
- Measurement SW: DASY4, V4.6 Build 23; Postprocessing SW: SEMCAD, V1.8 Build 160

Ear/Tilt, Ch.661, Ant.Fixed, Bat.Standard 2/Area Scan (51x71x1): Measurement grid: dx=20mm, dy=20mm

Maximum value of SAR (interpolated) = 0.058 mW/g

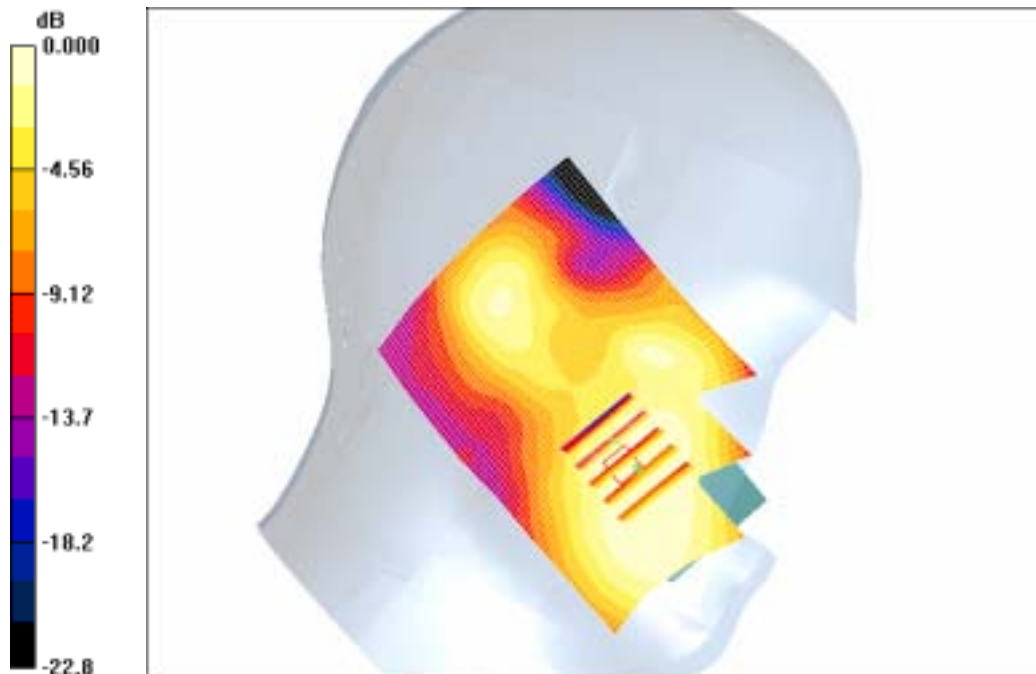
Ear/Tilt, Ch.661, Ant.Fixed, Bat.Standard 2/Zoom Scan (5x5x7)/Cube 0: Measurement grid: dx=8mm, dy=8mm, dz=5mm

Reference Value = 3.00 V/m; Power Drift = -0.177 dB

Peak SAR (extrapolated) = 0.075 W/kg

**SAR(1 g) = 0.050 mW/g**

Maximum value of SAR (measured) = 0.053 mW/g



0 dB = 0.053mW/g

SAMSUNG FCC ID : A3LSGHD407T 1900MHz GSM1900 Head SAR

DUT: SGH-D407T(PTT); Serial: FD-093-A

Program Name: SGH-D407 GSM1900 PTT (Job No. : FD-093)

Procedure Name: PTT, Ch.661, Ant.Fixed, Bat.Standard

Procedure Notes: Meas.Tissue Temp(celsius)-20.9, Ambient Temp-21.0 Test Date-30/May/2006[OET Bulletin 65-Supplement C, July 2001]

Communication System: GSM 1900; Frequency: 1880 MHz;Duty Cycle: 1:8.3

Medium parameters used:  $f = 1880$  MHz;  $\sigma = 1.42$  mho/m;  $\epsilon_r = 38.8$ ;  $\rho = 1000$  kg/m<sup>3</sup>

Phantom section: Flat Section

DASY4 Configuration:

- Probe: EX3DV4 - SN3537; ConvF(8.04, 8.04, 8.04); Calibrated: 2005-11-22
- Sensor-Surface: 4mm (Mechanical Surface Detection)
- Electronics: DAE3 Sn468; Calibrated: 2006-01-27
- Phantom: SAM PHANTOM #1; Type: SAM; Serial: TP-1247
- Measurement SW: DASY4, V4.6 Build 23; Postprocessing SW: SEMCAD, V1.8 Build 160

**PTT, Ch.661, Ant.Fixed, Bat.Standard/Area Scan (51x71x1):** Measurement grid:

$dx=20$ mm,  $dy=20$ mm

Maximum value of SAR (interpolated) = 0.088 mW/g

**PTT, Ch.661, Ant.Fixed, Bat.Standard/Zoom Scan (5x5x7)/Cube 0:** Measurement grid:

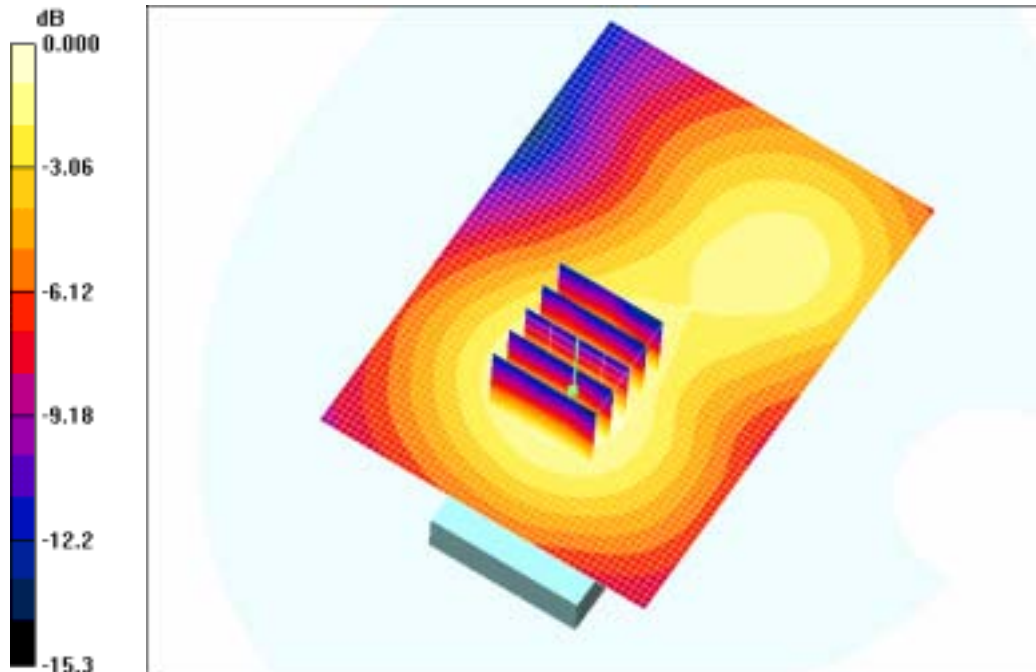
$dx=8$ mm,  $dy=8$ mm,  $dz=5$ mm

Reference Value = 6.20 V/m; Power Drift = -0.109 dB

Peak SAR (extrapolated) = 0.122 W/kg

**SAR(1 g) = 0.081 mW/g**

Maximum value of SAR (measured) = 0.087 mW/g



0 dB = 0.087mW/g

SAMSUNG FCC ID : A3LSGHD407T 1900MHz GSM1900 Head SAR

DUT: SGH-D407T; Serial: FD-093-A

Program Name: SGH-D407T GSM1900 Right (Job No. : FD-093)

Procedure Name: Cheek/Touch, Ch.512, Ant. Fixed, Bat.Standard

Procedure Notes: Meas.Tissue Temp(celsius)-20.9, Ambient Temp-21.0;Test Date-30/May/2006[OET Bulletin 65-Supplement C, July 2001]

Communication System: GSM 1900; Frequency: 1850.2 MHz;Duty Cycle: 1:8.3

Medium parameters used:  $f = 1850.2$  MHz;  $\sigma = 1.42$  mho/m;  $\epsilon_r = 38.8$ ;  $\rho = 1000$  kg/m<sup>3</sup>

Phantom section: Right Section

DASY4 Configuration:

- Probe: EX3DV4 - SN3537; ConvF(8.04, 8.04, 8.04); Calibrated: 2005-11-22
- Sensor-Surface: 4mm (Mechanical Surface Detection)
- Electronics: DAE3 Sn468; Calibrated: 2006-01-27
- Phantom: SAM PHANTOM #1; Type: SAM; Serial: TP-1247
- Measurement SW: DASY4, V4.6 Build 23; Postprocessing SW: SEMCAD, V1.8 Build 160

**Cheek/Touch, Ch.512, Ant.Intenna, Bat.Standard/Area Scan (51x71x1):** Measurement grid: dx=20mm, dy=20mm

Maximum value of SAR (interpolated) = 0.619 mW/g

**Cheek/Touch, Ch.512, Ant.Intenna, Bat.Standard/Zoom Scan (5x5x7)/Cube 0:**

Measurement grid: dx=8mm, dy=8mm, dz=5mm

Reference Value = 5.98 V/m; Power Drift = 0.115 dB

Peak SAR (extrapolated) = 0.956 W/kg

**SAR(1 g) = 0.548 mW/g**

Maximum value of SAR (measured) = 0.593 mW/g



SAMSUNG FCC ID : A3LSGHD407T 1900MHz GSM1900 Body SAR

DUT: SGH-D407T(Body); Serial: FD-093-A

Program Name: SGH-D407T GPRS1900 Body (Job No. : FD-093)

Procedure Name: Body, Ch.512, Ant. Fixed, Bat.Standard

Procedure Notes: Meas.Tissue Temp(celsius)-21.3, Ambient Temp-21.0;Test Date-30/May/2006[OET Bulletin 65-Supplement C, July 2001]

Communication System: GSM1900 GPRS; Frequency: 1850.2 MHz;Duty Cycle: 1:4.15  
Medium parameters used:  $f = 1850.2$  MHz;  $\sigma = 1.56$  mho/m;  $\epsilon_r = 52.2$ ;  $\rho = 1000$  kg/m<sup>3</sup>

Phantom section: Flat Section

DASY4 Configuration:

- Probe: EX3DV4 - SN3537; ConvF(7.48, 7.48, 7.48); Calibrated: 2005-11-22
- Sensor-Surface: 4mm (Mechanical Surface Detection)
- Electronics: DAE3 Sn468; Calibrated: 2006-01-27
- Phantom: SAM PHANTOM #2; Type: SAM; Serial: TP-1248
- Measurement SW: DASY4, V4.6 Build 23; Postprocessing SW: SEMCAD, V1.8 Build 160

**Body, Ch.512, Ant.Intenna, Bat.Standard/Area Scan (51x71x1):** Measurement grid:

dx=20mm, dy=20mm

Maximum value of SAR (interpolated) = 0.782 mW/g

**Body, Ch.512, Ant.Intenna, Bat.Standard/Zoom Scan (5x5x7)/Cube 0:** Measurement grid:

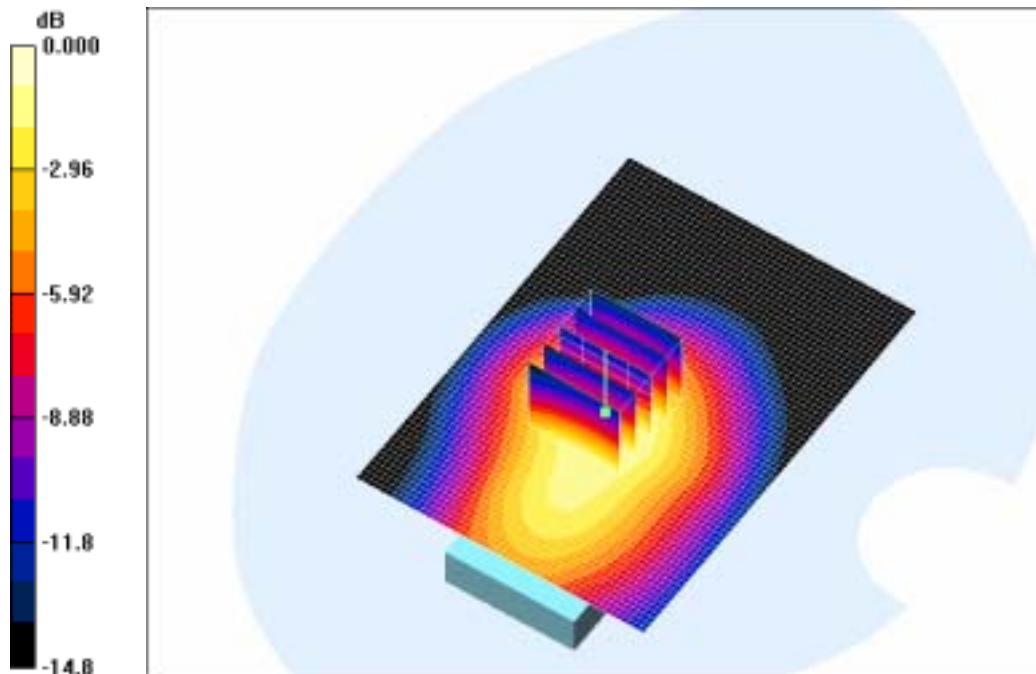
dx=8mm, dy=8mm, dz=5mm

Reference Value = 15.1 V/m; Power Drift = 0.001 dB

Peak SAR (extrapolated) = 1.06 W/kg

**SAR(1 g) = 0.658 mW/g**

Maximum value of SAR (measured) = 0.694 mW/g



0 dB = 0.694mW/g

SAMSUNG FCC ID : A3LSGHD407T 1900MHz GSM1900 Body SAR

DUT: SGH-D407T(Body); Serial: FD-093-A

Program Name: SGH-D407T GPRS1900 Body (Job No. : FD-093)

Procedure Name: Body, Ch.512, Ant. Fixed, Bat.Standard

Procedure Notes: Meas.Tissue Temp(celsius)-21.3, Ambient Temp-21.0;Test Date-30/May/2006[OET Bulletin 65-Supplement C, July 2001]

Communication System: GSM1900 GPRS; Frequency: 1850.2 MHz;Duty Cycle: 1:4.15  
Medium parameters used:  $f = 1850.2$  MHz;  $\sigma = 1.56$  mho/m;  $\epsilon_r = 52.2$ ;  $\rho = 1000$  kg/m<sup>3</sup>

Phantom section: Flat Section

DASY4 Configuration:

- Probe: EX3DV4 - SN3537; ConvF(7.48, 7.48, 7.48); Calibrated: 2005-11-22
- Sensor-Surface: 4mm (Mechanical Surface Detection)
- Electronics: DAE3 Sn468; Calibrated: 2006-01-27
- Phantom: SAM PHANTOM #2; Type: SAM; Serial: TP-1248
- Measurement SW: DASY4, V4.6 Build 23; Postprocessing SW: SEMCAD, V1.8 Build 160

**Body, Ch.512, Ant.Intenna, Bat.Standard/Area Scan (51x71x1):** Measurement grid:

dx=20mm, dy=20mm

Maximum value of SAR (interpolated) = 0.782 mW/g

**Body, Ch.512, Ant.Intenna, Bat.Standard/Zoom Scan (5x5x7)/Cube 0:** Measurement grid:

dx=8mm, dy=8mm, dz=5mm

Reference Value = 15.1 V/m; Power Drift = 0.001 dB

Peak SAR (extrapolated) = 1.06 W/kg

**SAR(1 g) = 0.658 mW/g**

Maximum value of SAR (measured) = 0.694 mW/g

