

SAMSUNG FCC ID : A3LSCHI640 -- 835 MHz CDMA Head SAR

DUT: SCH-i640; Serial: FB-048-D

Program Name: SCH-i640 CDMA Right (Job No.: FB-048)

Procedure Name: Cheek/Touch, Ch.0777, Ant.In, Bat.Extended

Procedure Notes: Meas.Tissue Temp(celsius)-21.8;Test Date-03/Sep/2004[OET Bulletin 65-Supplement C, July 2001]

Communication System: CDMA; Frequency: 848.31 MHz;Duty Cycle: 1:1

Medium parameters used: $f = 848.31$ MHz; $\sigma = 0.89$ mho/m; $\epsilon_r = 41.1$; $\rho = 1000$ kg/m³

Phantom section: Right Section

DASY4 Configuration:

- Probe: ET3DV6 - SN1735; ConvF(7, 7, 7); Calibrated: 2003-11-20
- Sensor-Surface: 4mm (Mechanical And Optical Surface Detection)
- Electronics: DAE3 Sn468; Calibrated: 2003-11-21
- Phantom: SAM 835/900 MHz; Type: SAM; Serial: TP-1141
- Measurement SW: DASY4, V4.3 Build 16; Postprocessing SW: SEMCAD, V1.8 Build 123

Cheek/Touch, Ch.0777, Ant.In, Bat.Extended/Area Scan (51x71x1):

Measurement grid: dx=20mm, dy=20mm

Maximum value of SAR (interpolated) = 0.669 mW/g

Cheek/Touch, Ch.0777, Ant.In, Bat.Extended/Zoom Scan (6x6x7)/Cube 0:

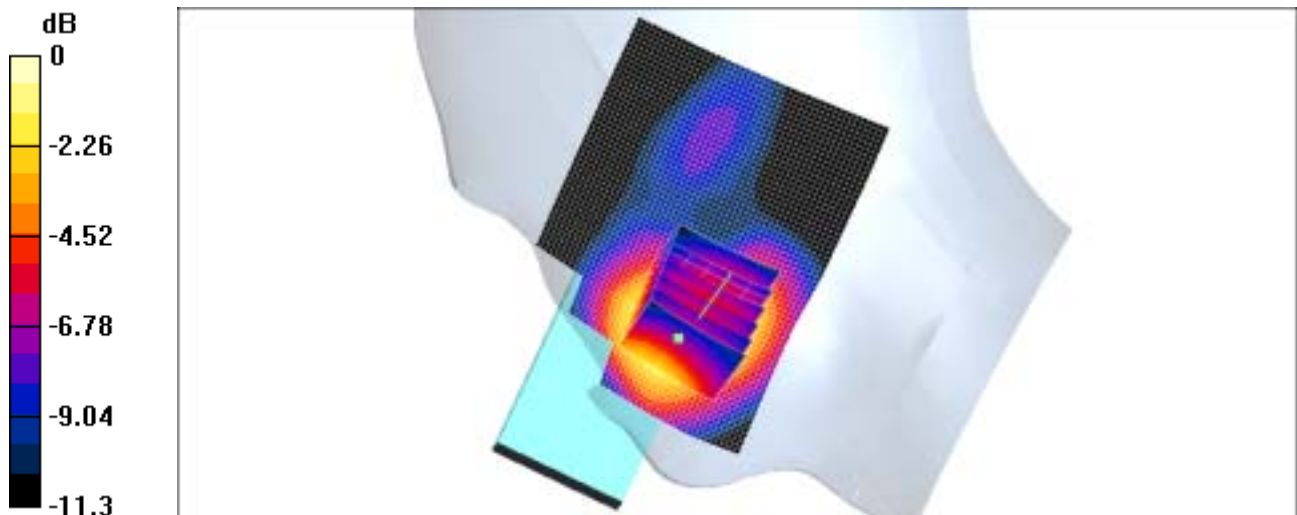
Measurement grid: dx=8mm, dy=8mm, dz=5mm

Reference Value = 12.2 V/m; Power Drift = -0.1 dB

Peak SAR (extrapolated) = 1.08 W/kg

SAR(1 g) = 0.687 mW/g

Maximum value of SAR (measured) = 0.709 mW/g



0 dB = 0.709mW/g

SAMSUNG FCC ID : A3LSCHI640 -- 835 MHz CDMA Head SAR

DUT: SCH-i640; Serial: FB-048-D

Program Name: SCH-i640 CDMA Right (Job No.: FB-048)

Procedure Name: Ear/Tilt, Ch.0363, Ant.In, Bat.Extended

Procedure Notes: Meas.Tissue Temp(celsius)-21.8;Test Date-03/Sep/2004[OET Bulletin 65-Supplement C, July 2001]

Communication System: CDMA; Frequency: 835.89 MHz;Duty Cycle: 1:1

Medium parameters used: $f = 835.89$ MHz; $\sigma = 0.89$ mho/m; $\epsilon_r = 41.1$; $\rho = 1000$ kg/m³

Phantom section: Right Section

DASY4 Configuration:

- Probe: ET3DV6 - SN1735; ConvF(7, 7, 7); Calibrated: 2003-11-20
- Sensor-Surface: 4mm (Mechanical And Optical Surface Detection)
- Electronics: DAE3 Sn468; Calibrated: 2003-11-21
- Phantom: SAM 835/900 MHz; Type: SAM; Serial: TP-1141
- Measurement SW: DASY4, V4.3 Build 16; Postprocessing SW: SEMCAD, V1.8 Build 123

Ear/Tilt, Ch.0363, Ant.In, Bat.Extended/Area Scan (51x71x1): Measurement grid: dx=20mm, dy=20mm

Maximum value of SAR (interpolated) = 0.156 mW/g

Ear/Tilt, Ch.0363, Ant.In, Bat.Extended/Zoom Scan (5x5x7)/Cube 0:

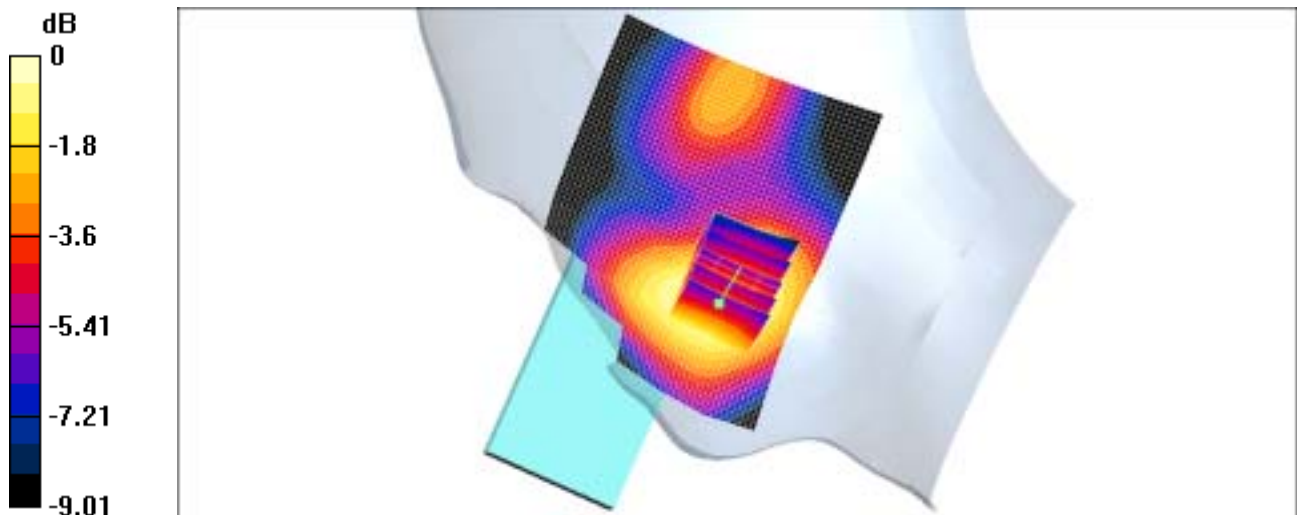
Measurement grid: dx=8mm, dy=8mm, dz=5mm

Reference Value = 11.2 V/m; Power Drift = 0.0 dB

Peak SAR (extrapolated) = 0.194 W/kg

SAR(1 g) = 0.154 mW/g

Maximum value of SAR (measured) = 0.162 mW/g



0 dB = 0.162mW/g

SAMSUNG FCC ID : A3LSCHI640 -- 835 MHz CDMA Head SAR

DUT: SCH-i640; Serial: FB-048-D

Program Name: SCH-i640 CDMA Left (Job No.: FB-048)

Procedure Name: Cheek/Touch, Ch.0363, Ant.In, Bat.Extended

Procedure Notes: Meas.Tissue Temp(celsius)-21.8;Test Date-03/Sep/2004[OET Bulletin 65-Supplement C, July 2001]

Communication System: CDMA; Frequency: 835.89 MHz;Duty Cycle: 1:1

Medium parameters used: $f = 835.89$ MHz; $\sigma = 0.89$ mho/m; $\epsilon_r = 41.1$; $\rho = 1000$ kg/m³

Phantom section: Left Section

DASY4 Configuration:

- Probe: ET3DV6 - SN1735; ConvF(7, 7, 7); Calibrated: 2003-11-20
- Sensor-Surface: 4mm (Mechanical And Optical Surface Detection)
- Electronics: DAE3 Sn468; Calibrated: 2003-11-21
- Phantom: SAM 835/900 MHz; Type: SAM; Serial: TP-1141
- Measurement SW: DASY4, V4.3 Build 16; Postprocessing SW: SEMCAD, V1.8 Build 123

Cheek/Touch, Ch.0363, Ant.In, Bat.Extended/Area Scan (51x71x1):

Measurement grid: dx=20mm, dy=20mm

Maximum value of SAR (interpolated) = 0.573 mW/g

Cheek/Touch, Ch.0363, Ant.In, Bat.Extended/Zoom Scan (5x5x7)/Cube 0:

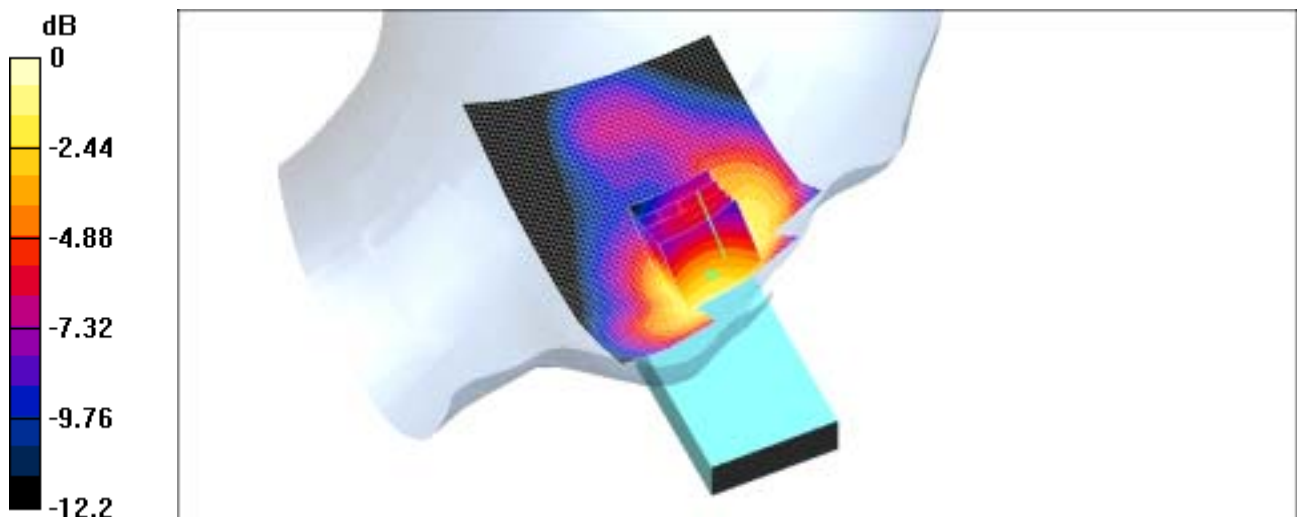
Measurement grid: dx=8mm, dy=8mm, dz=5mm

Reference Value = 12.2 V/m; Power Drift = -0.1 dB

Peak SAR (extrapolated) = 0.678 W/kg

SAR(1 g) = 0.531 mW/g

Maximum value of SAR (measured) = 0.546 mW/g



0 dB = 0.546mW/g

SAMSUNG FCC ID : A3LSCHI640 -- 835 MHz CDMA Head SAR

DUT: SCH-i640; Serial: FB-048-D

Program Name: SCH-i640 CDMA Left (Job No.: FB-048)

Procedure Name: Ear/Tilt, Ch.0363, Ant.In, Bat.Extended

Procedure Notes: Meas.Tissue Temp(celsius)-21.8; Test Date-03/Sep/2004 [OET Bulletin 65-Supplement C, July 2001]

Communication System: CDMA; Frequency: 835.89 MHz; Duty Cycle: 1:1

Medium parameters used: $f = 835.89$ MHz; $\sigma = 0.89$ mho/m; $\epsilon_r = 41.1$; $\rho = 1000$ kg/m³

Phantom section: Left Section

DASY4 Configuration:

- Probe: ET3DV6 - SN1735; ConvF(7, 7, 7); Calibrated: 2003-11-20
- Sensor-Surface: 4mm (Mechanical And Optical Surface Detection)
- Electronics: DAE3 Sn468; Calibrated: 2003-11-21
- Phantom: SAM 835/900 MHz; Type: SAM; Serial: TP-1141
- Measurement SW: DASY4, V4.3 Build 16; Postprocessing SW: SEMCAD, V1.8 Build 123

Ear/Tilt, Ch.0363, Ant.In, Bat.Extended/Area Scan (51x71x1): Measurement

grid: dx=20mm, dy=20mm

Maximum value of SAR (interpolated) = 0.126 mW/g

Ear/Tilt, Ch.0363, Ant.In, Bat.Extended/Zoom Scan (6x6x7)/Cube 0:

Measurement grid: dx=8mm, dy=8mm, dz=5mm

Reference Value = 10.5 V/m; Power Drift = -0.0 dB

Peak SAR (extrapolated) = 0.157 W/kg

SAR(1 g) = 0.133 mW/g

Maximum value of SAR (measured) = 0.133 mW/g

Ear/Tilt, Ch.0363, Ant.In, Bat.Extended/Zoom Scan 2 (5x5x7)/Cube 0:

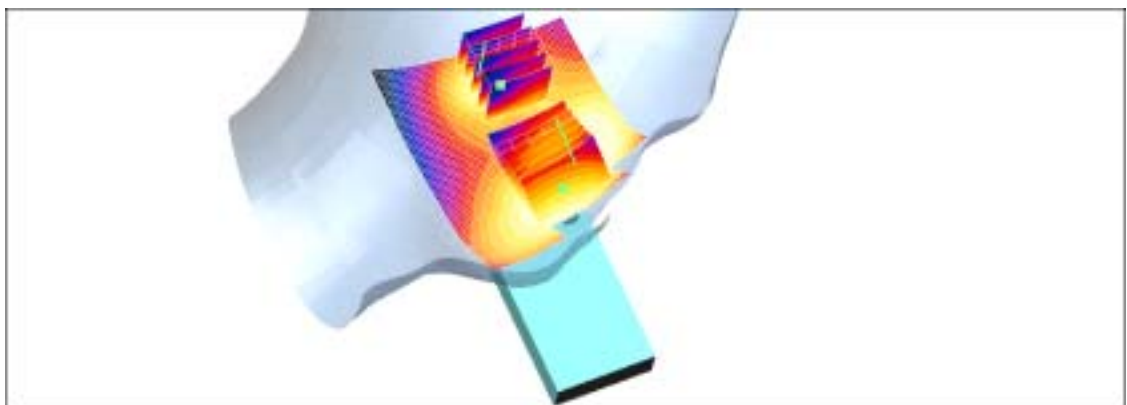
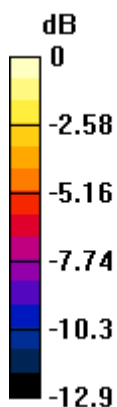
Measurement grid: dx=8mm, dy=8mm, dz=5mm

Reference Value = 10.5 V/m; Power Drift = -0.0 dB

Peak SAR (extrapolated) = 0.164 W/kg

SAR(1 g) = 0.087 mW/g

Maximum value of SAR (measured) = 0.096 mW/g



0 dB = 0.096mW/g

SAMSUNG FCC ID : A3LSCHI640 -- 1900 MHz PCS CDMA Head SAR

DUT: SCH-i640; Serial: FB-048-D

Program Name: SCH-i640 PCS Right (Job No.: FB-048)

Procedure Name: Cheek/Touch, Ch.0025, Ant.In, Bat.Extended

Procedure Notes: Meas.Tissue Temp(celsius)-21.6;Test Date-07/Sep/2004[OET Bulletin 65-Supplement C, July 2001]

Communication System: PCS; Frequency: 1851.25 MHz;Duty Cycle: 1:1

Medium parameters used: $\sigma = 1.4$; mho/m, $\epsilon_r = 38.4$; $\rho = 1000 \text{ kg/m}^3$

Phantom section: Right Section

DASY4 Configuration:

- Probe: ET3DV6 - SN1617; ConvF(5.11, 5.11, 5.11); Calibrated: 2004-08-27
- Sensor-Surface: 4mm (Mechanical And Optical Surface Detection)
- Electronics: DAE3 Sn486; Calibrated: 2004-08-23
- Phantom: SAM 1800/1900 MHz; Type: SAM; Serial: TP-1248
- Measurement SW: DASY4, V4.3 Build 16; Postprocessing SW: SEMCAD, V1.8 Build 123

Cheek/Touch, Ch.0025, Ant.In, Bat.Extended/Area Scan (51x71x1):

Measurement grid: dx=20mm, dy=20mm

Maximum value of SAR (interpolated) = 1.25 mW/g

Cheek/Touch, Ch.0025, Ant.In, Bat.Extended/Zoom Scan (5x5x7)/Cube 0:

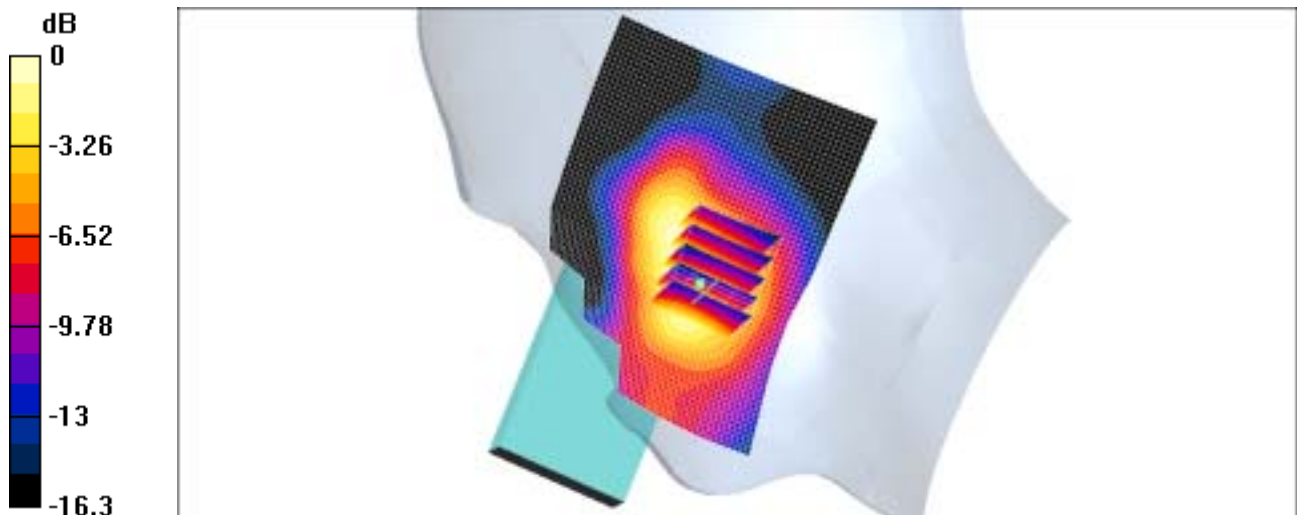
Measurement grid: dx=8mm, dy=8mm, dz=5mm

Reference Value = 7.99 V/m; Power Drift = 0.2 dB

Peak SAR (extrapolated) = 2.07 W/kg

SAR(1 g) = 1.18 mW/g

Maximum value of SAR (measured) = 1.29 mW/g



0 dB = 1.29mW/g

SAMSUNG FCC ID : A3LSCHI640 -- 1900 MHz PCS CDMA Head SAR

DUT: SCH-i640; Serial: FB-048-D

Program Name: SCH-i640 PCS Right (Job No.: FB-048)

Procedure Name: Ear/Tilt, Ch.0600, Ant.In, Bat.Extended

Procedure Notes: Meas.Tissue Temp(celsius)-21.6;Test Date-07/Sep/2004[OET Bulletin 65-Supplement C, July 2001]

Communication System: PCS; Frequency: 1880 MHz;Duty Cycle: 1:1

Medium parameters used: $\sigma = 1.4$; mho/m, $\epsilon_r = 38.4$; $\rho = 1000 \text{ kg/m}^3$

Phantom section: Right Section

DASY4 Configuration:

- Probe: ET3DV6 - SN1617; ConvF(5.11, 5.11, 5.11); Calibrated: 2004-08-27
- Sensor-Surface: 4mm (Mechanical And Optical Surface Detection)
- Electronics: DAE3 Sn486; Calibrated: 2004-08-23
- Phantom: SAM 1800/1900 MHz; Type: SAM; Serial: TP-1248
- Measurement SW: DASY4, V4.3 Build 16; Postprocessing SW: SEMCAD, V1.8 Build 123

Ear/Tilt, Ch.0600, Ant.In, Bat.Extended/Area Scan (51x71x1): Measurement grid: dx=20mm, dy=20mm

Maximum value of SAR (interpolated) = 0.271 mW/g

Ear/Tilt, Ch.0600, Ant.In, Bat.Extended/Zoom Scan (5x5x7)/Cube 0:

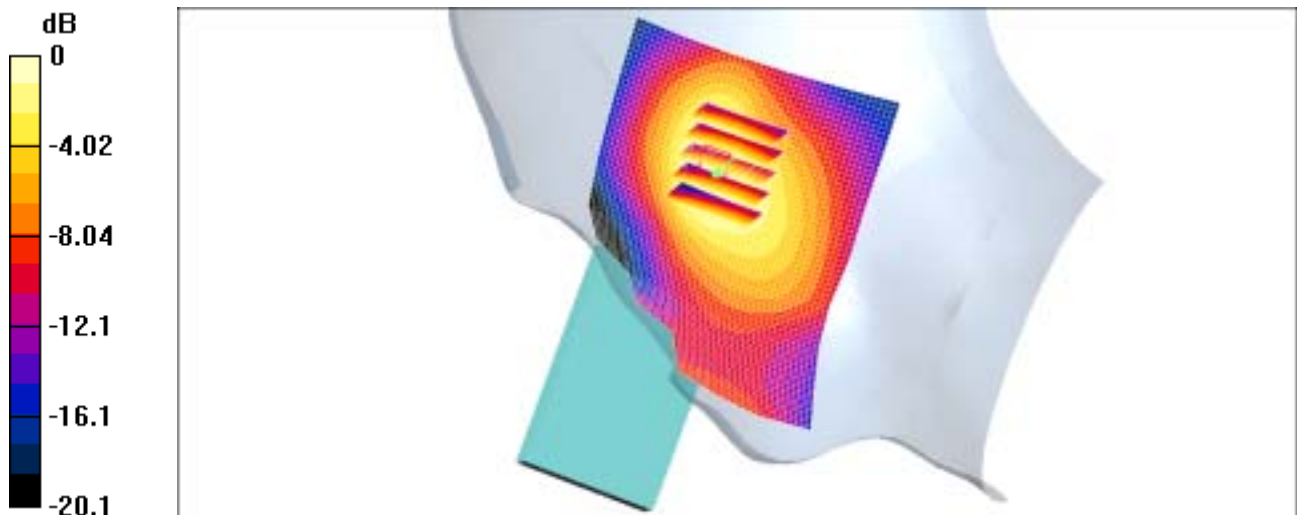
Measurement grid: dx=8mm, dy=8mm, dz=5mm

Reference Value = 7.25 V/m; Power Drift = -0.2 dB

Peak SAR (extrapolated) = 0.339 W/kg

SAR(1 g) = 0.229 mW/g

Maximum value of SAR (measured) = 0.243 mW/g



0 dB = 0.243mW/g

SAMSUNG FCC ID : A3LSCHI640 -- 1900 MHz PCS CDMA Head SAR

DUT: SCH-i640; Serial: FB-048-D

Program Name: SCH-i640 PCS Left (Job No.: FB-048)

Procedure Name: Cheek/Touch, Ch.0025, Ant.In, Bat.Extended

Procedure Notes: Meas.Tissue Temp(celsius)-21.6;Test Date-07/Sep/2004[OET Bulletin 65-Supplement C, July 2001]

Communication System: PCS; Frequency: 1851.25 MHz;Duty Cycle: 1:1

Medium parameters used: $\sigma = 1.4$; mho/m, $\epsilon_r = 38.4$; $\rho = 1000 \text{ kg/m}^3$

Phantom section: Left Section

DASY4 Configuration:

- Probe: ET3DV6 - SN1617; ConvF(5.11, 5.11, 5.11); Calibrated: 2004-08-27
- Sensor-Surface: 4mm (Mechanical And Optical Surface Detection)
- Electronics: DAE3 Sn486; Calibrated: 2004-08-23
- Phantom: SAM 1800/1900 MHz; Type: SAM; Serial: TP-1248
- Measurement SW: DASY4, V4.3 Build 16; Postprocessing SW: SEMCAD, V1.8 Build 123

Cheek/Touch, Ch.0025, Ant.In, Bat.Extended/Area Scan (51x71x1):

Measurement grid: dx=20mm, dy=20mm

Maximum value of SAR (interpolated) = 0.775 mW/g

Cheek/Touch, Ch.0025, Ant.In, Bat.Extended/Zoom Scan (5x5x7)/Cube 0:

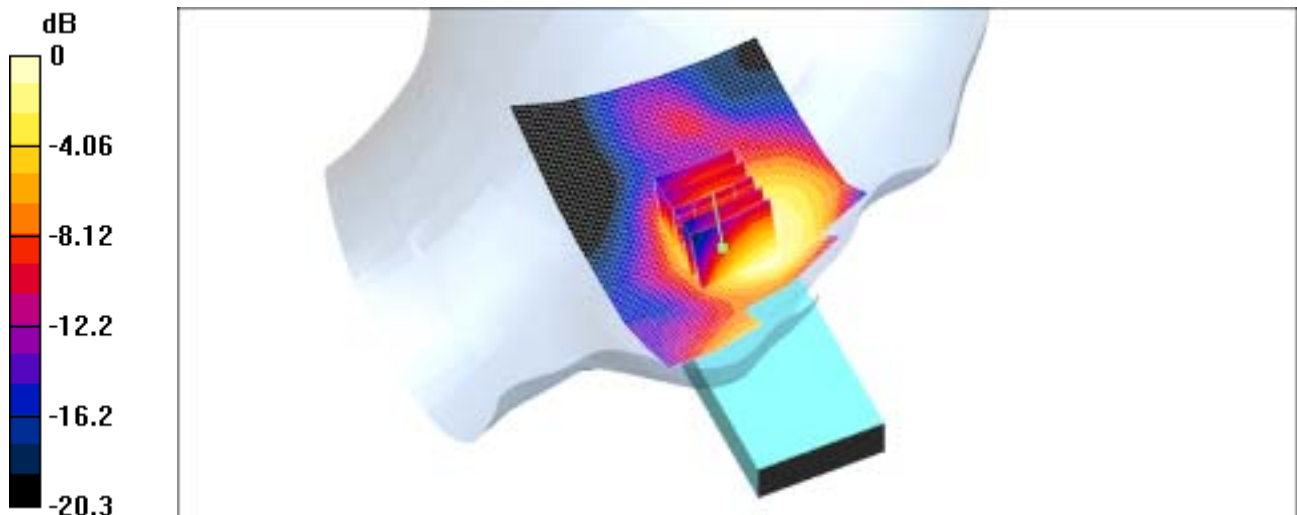
Measurement grid: dx=8mm, dy=8mm, dz=5mm

Reference Value = 7.44 V/m; Power Drift = -0.1 dB

Peak SAR (extrapolated) = 1.18 W/kg

SAR(1 g) = 0.777 mW/g

Maximum value of SAR (measured) = 0.837 mW/g



0 dB = 0.837mW/g

SAMSUNG FCC ID : A3LSCHI640 --1900 MHz PCS CDMA Head SAR

DUT: SCH-i640; Serial: FB-048-D

Program Name: SCH-i640 PCS Left (Job No.: FB-048)

Procedure Name: Ear/Tilt, Ch.0600, Ant.Out, Bat.Extended

Procedure Notes: Meas.Tissue Temp(celsius)-21.6; Test Date-07/Sep/2004[OET Bulletin 65-Supplement C, July 2001]

Communication System: PCS; Frequency: 1880 MHz; Duty Cycle: 1:1

Medium parameters used: $\sigma = 1.4$; mho/m, $\epsilon_r = 38.4$; $\rho = 1000 \text{ kg/m}^3$

Phantom section: Left Section

DASY4 Configuration:

- Probe: ET3DV6 - SN1617; ConvF(5.11, 5.11, 5.11); Calibrated: 2004-08-27
- Sensor-Surface: 4mm (Mechanical And Optical Surface Detection)
- Electronics: DAE3 Sn486; Calibrated: 2004-08-23
- Phantom: SAM 1800/1900 MHz; Type: SAM; Serial: TP-1248
- Measurement SW: DASY4, V4.3 Build 16; Postprocessing SW: SEMCAD, V1.8 Build 123

Ear/Tilt, Ch.0600, Ant.Out, Bat.Extended/Area Scan (51x71x1):

Measurement grid: dx=20mm, dy=20mm

Maximum value of SAR (interpolated) = 0.179 mW/g

Ear/Tilt, Ch.0600, Ant.Out, Bat.Extended/Zoom Scan (5x5x7)/Cube 0:

Measurement grid: dx=8mm, dy=8mm, dz=5mm

Reference Value = 7.92 V/m; Power Drift = 0.0 dB

Peak SAR (extrapolated) = 0.228 W/kg

SAR(1 g) = 0.152 mW/g

Maximum value of SAR (measured) = 0.163 mW/g

Ear/Tilt, Ch.0600, Ant.Out, Bat.Extended/Zoom Scan (5x5x7)/Cube 1:

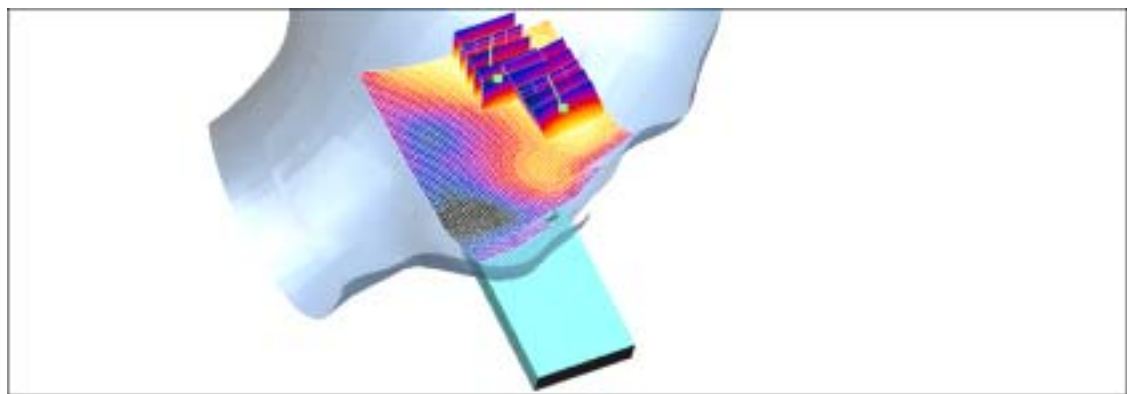
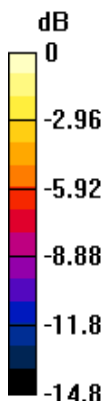
Measurement grid: dx=8mm, dy=8mm, dz=5mm

Reference Value = 7.92 V/m; Power Drift = 0.0 dB

Peak SAR (extrapolated) = 0.242 W/kg

SAR(1 g) = 0.159 mW/g

Maximum value of SAR (measured) = 0.169 mW/g



0 dB = 0.169mW/g

SAMSUNG FCC ID : A3LSCHI640 -- 835 MHz CDMA Body SAR

DUT: SCH-i640 (Body); Serial: FB-048-D

Program Name: SCH-i640 CDMA Body (Job No.: FB-048)

Procedure Name: Body, Ch.0363, Ant.Out, Bat.Extended

Procedure Notes: Meas.Tissue Temp(celsius)-21.5; Test Date-06/Sep/2004[OET Bulletin 65-Supplement C, July 2001]

Communication System: CDMA; Frequency: 835.89 MHz; Duty Cycle: 1:1

Medium parameters used: $f = 835.89$ MHz; $\sigma = 0.94$ mho/m; $\epsilon_r = 52.5$; $\rho = 1000$ kg/m³

Phantom section: Flat Section

DASY4 Configuration:

- Probe: ET3DV6 - SN1617; ConvF(6.21, 6.21, 6.21); Calibrated: 2004-08-27
- Sensor-Surface: 4mm (Mechanical And Optical Surface Detection)
- Electronics: DAE3 Sn486; Calibrated: 2004-08-23
- Phantom: SAM 835/900 MHz; Type: SAM; Serial: TP-1141
- Measurement SW: DASY4, V4.3 Build 16; Postprocessing SW: SEMCAD, V1.8 Build 123

Body, Ch.0363, Ant.Out, Bat.Extended/Area Scan (51x71x1): Measurement grid: dx=20mm, dy=20mm

Maximum value of SAR (interpolated) = 1.34 mW/g

Body, Ch.0363, Ant.Out, Bat.Extended/Zoom Scan (5x5x7)/Cube 0:

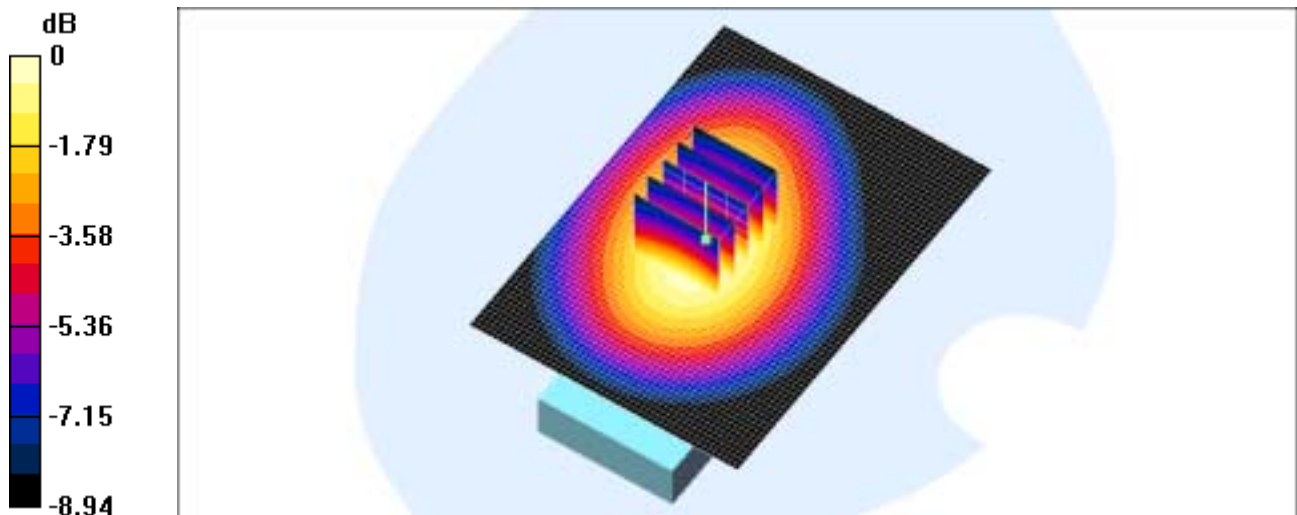
Measurement grid: dx=8mm, dy=8mm, dz=5mm

Reference Value = 35.5 V/m; Power Drift = 0.006 dB

Peak SAR (extrapolated) = 1.62 W/kg

SAR(1 g) = 1.25 mW/g

Maximum value of SAR (measured) = 1.32 mW/g



0 dB = 1.32mW/g

SAMSUNG FCC ID : A3LSCHI640 -- 1900 MHz PCS CDMA Body SAR

DUT: SCH-i640 (Body); Serial: FB-048-D

Program Name: SCH-i640 PCS Body (Job No.: FB-048)

Procedure Name: Body, Ch.0600, Ant.Out, Bat.Extended

Procedure Notes: Meas.Tissue Temp(celsius)-21.4;Test Date-07/Sep/2004[OET Bulletin 65-Supplement C, July 2001]

Communication System: PCS; Frequency: 1880 MHz;Duty Cycle: 1:1

Medium parameters used: $\sigma = 1.51$; mho/m, $\epsilon_r = 52.3$; $\rho = 1000$ kg/m³

Phantom section: Flat Section

DASY4 Configuration:

- Probe: ET3DV6 - SN1617; ConvF(4.5, 4.5, 4.5); Calibrated: 2004-08-27
- Sensor-Surface: 4mm (Mechanical And Optical Surface Detection)
- Electronics: DAE3 Sn486; Calibrated: 2004-08-23
- Phantom: SAM 1800/1900 MHz; Type: SAM; Serial: TP-1248
- Measurement SW: DASY4, V4.3 Build 16; Postprocessing SW: SEMCAD, V1.8 Build 123

Body, Ch.0600, Ant.Out, Bat.Extended/Area Scan (51x71x1): Measurement grid: dx=20mm, dy=20mm

Maximum value of SAR (interpolated) = 1.26 mW/g

Body, Ch.0600, Ant.Out, Bat.Extended/Zoom Scan (5x5x7)/Cube 0:

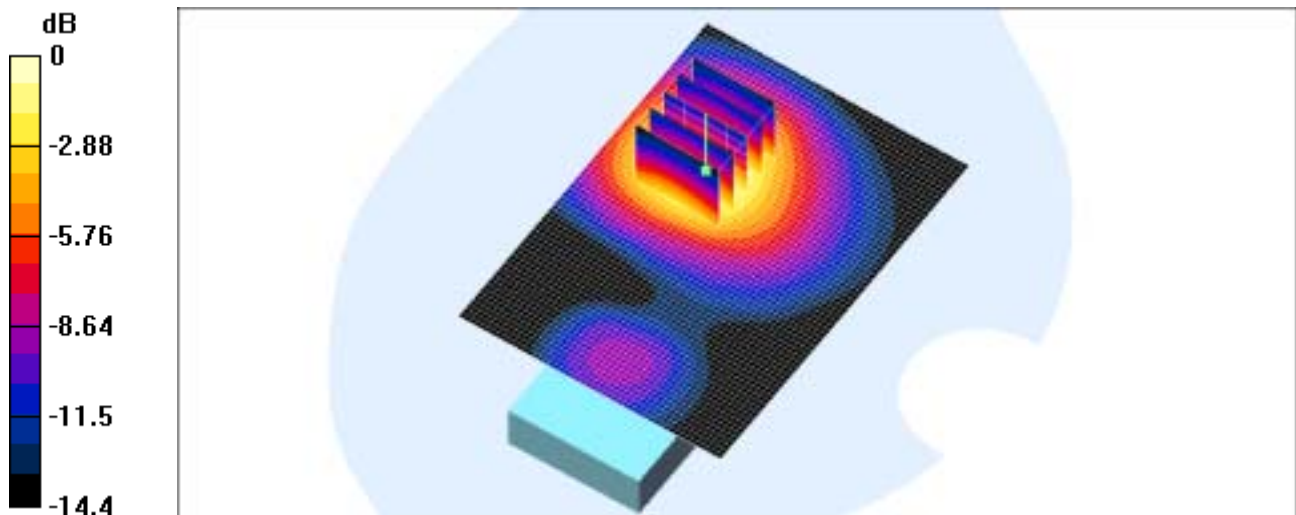
Measurement grid: dx=8mm, dy=8mm, dz=5mm

Reference Value = 16.1 V/m; Power Drift = -0.1 dB

Peak SAR (extrapolated) = 1.72 W/kg

SAR(1 g) = 1.12 mW/g

Maximum value of SAR (measured) = 1.22 mW/g



0 dB = 1.22mW/g

SAMSUNG FCC ID : A3LSCHI640 -- 835 MHz CDMA Head SAR

DUT: SCH-i640; Serial: FB-048-D

Program Name: SCH-i640 CDMA Right (Job No.: FB-048)

Procedure Name: Cheek/Touch, Ch.0777, Ant.In, Bat.Extended

Procedure Notes: Meas.Tissue Temp(celsius)-21.8; Test Date-03/Sep/2004 [OET Bulletin 65-Supplement C, July 2001]

Communication System: CDMA; Frequency: 848.31 MHz; Duty Cycle: 1:1

Medium parameters used: $f = 848.31$ MHz; $\sigma = 0.89$ mho/m; $\epsilon_r = 41.1$; $\rho = 1000$ kg/m³

Phantom section: Right Section

DASY4 Configuration:

- Probe: ET3DV6 - SN1735; ConvF(7, 7, 7); Calibrated: 2003-11-20
- Sensor-Surface: 4mm (Mechanical And Optical Surface Detection)
- Electronics: DAE3 Sn468; Calibrated: 2003-11-21
- Phantom: SAM 835/900 MHz; Type: SAM; Serial: TP-1141
- Measurement SW: DASY4, V4.3 Build 16; Postprocessing SW: SEMCAD, V1.8 Build 123

Cheek/Touch, Ch.0777, Ant.In, Bat.Extended/Area Scan (51x71x1):

Measurement grid: dx=20mm, dy=20mm

Maximum value of SAR (interpolated) = 0.669 mW/g

Cheek/Touch, Ch.0777, Ant.In, Bat.Extended/Zoom Scan (6x6x7)/Cube 0:

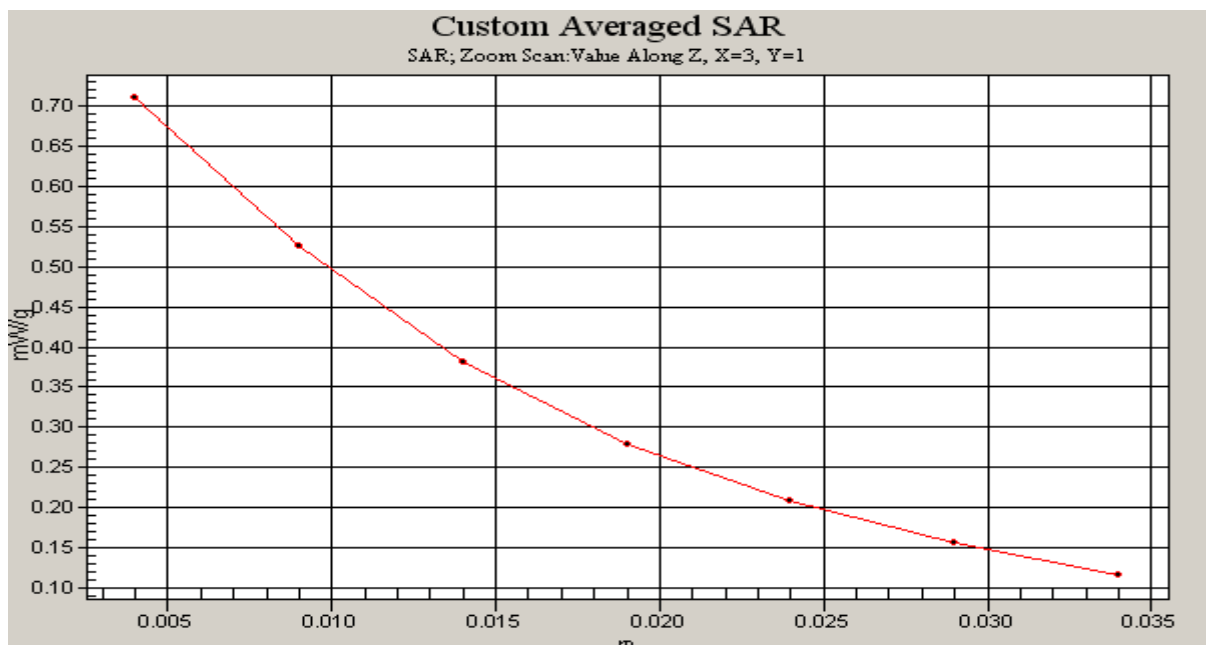
Measurement grid: dx=8mm, dy=8mm, dz=5mm

Reference Value = 12.2 V/m; Power Drift = -0.1 dB

Peak SAR (extrapolated) = 1.08 W/kg

SAR(1 g) = 0.687 mW/g

Maximum value of SAR (measured) = 0.709 mW/g



SAMSUNG FCC ID : A3LSCHI640 -- 1900 MHz PCS CDMA Head SAR

DUT: SCH-i640; Serial: FB-048-D

Program Name: SCH-i640 PCS Right (Job No.: FB-048)

Procedure Name: Cheek/Touch, Ch.0025, Ant.In, Bat.Extended

Procedure Notes: Meas.Tissue Temp(celsius)-21.6; Test Date-07/Sep/2004[OET Bulletin 65-Supplement C, July 2001]

Communication System: PCS; Frequency: 1851.25 MHz; Duty Cycle: 1:1

Medium parameters used: $\sigma = 1.4$; mho/m, $\epsilon_r = 38.4$; $\rho = 1000 \text{ kg/m}^3$

Phantom section: Right Section

DASY4 Configuration:

- Probe: ET3DV6 - SN1617; ConvF(5.11, 5.11, 5.11); Calibrated: 2004-08-27
- Sensor-Surface: 4mm (Mechanical And Optical Surface Detection)
- Electronics: DAE3 Sn486; Calibrated: 2004-08-23
- Phantom: SAM 1800/1900 MHz; Type: SAM; Serial: TP-1248
- Measurement SW: DASY4, V4.3 Build 16; Postprocessing SW: SEMCAD, V1.8 Build 123

Cheek/Touch, Ch.0025, Ant.In, Bat.Extended/Area Scan (51x71x1):

Measurement grid: dx=20mm, dy=20mm

Maximum value of SAR (interpolated) = 1.25 mW/g

Cheek/Touch, Ch.0025, Ant.In, Bat.Extended/Zoom Scan (5x5x7)/Cube 0:

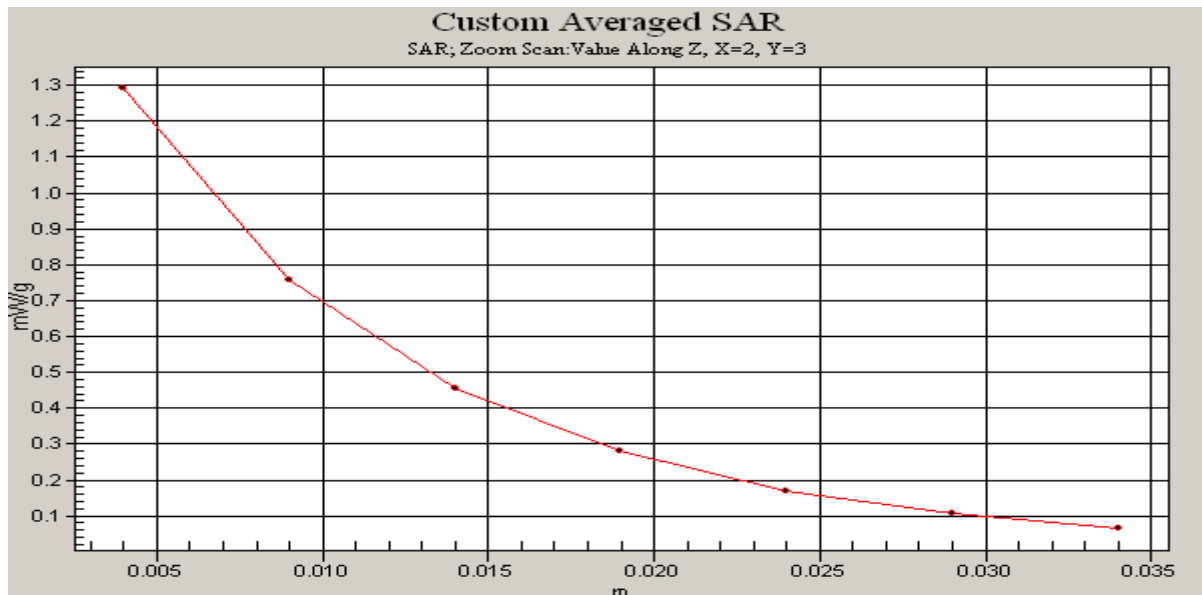
Measurement grid: dx=8mm, dy=8mm, dz=5mm

Reference Value = 7.99 V/m; Power Drift = 0.2 dB

Peak SAR (extrapolated) = 2.07 W/kg

SAR(1 g) = 1.18 mW/g

Maximum value of SAR (measured) = 1.29 mW/g



SAMSUNG FCC ID : A3LSCHI640 -- 835 MHz CDMA Body SAR

DUT: SCH-i640 (Body); Serial: FB-048-D

Program Name: SCH-i640 CDMA Body (Job No.: FB-048)

Procedure Name: Body, Ch.0363, Ant.Out, Bat.Extended

Procedure Notes: Meas.Tissue Temp(celsius)-21.5; Test Date-06/Sep/2004[OET Bulletin 65-Supplement C, July 2001]

Communication System: CDMA; Frequency: 835.89 MHz; Duty Cycle: 1:1

Medium parameters used: $f = 835.89$ MHz; $\sigma = 0.94$ mho/m; $\epsilon_r = 52.5$; $\rho = 1000$ kg/m³

Phantom section: Flat Section

DASY4 Configuration:

- Probe: ET3DV6 - SN1617; ConvF(6.21, 6.21, 6.21); Calibrated: 2004-08-27
- Sensor-Surface: 4mm (Mechanical And Optical Surface Detection)
- Electronics: DAE3 Sn486; Calibrated: 2004-08-23
- Phantom: SAM 835/900 MHz; Type: SAM; Serial: TP-1141
- Measurement SW: DASY4, V4.3 Build 16; Postprocessing SW: SEMCAD, V1.8 Build 123

Body, Ch.0363, Ant.Out, Bat.Extended/Area Scan (51x71x1): Measurement grid: dx=20mm, dy=20mm

Maximum value of SAR (interpolated) = 1.34 mW/g

Body, Ch.0363, Ant.Out, Bat.Extended/Zoom Scan (5x5x7)/Cube 0:

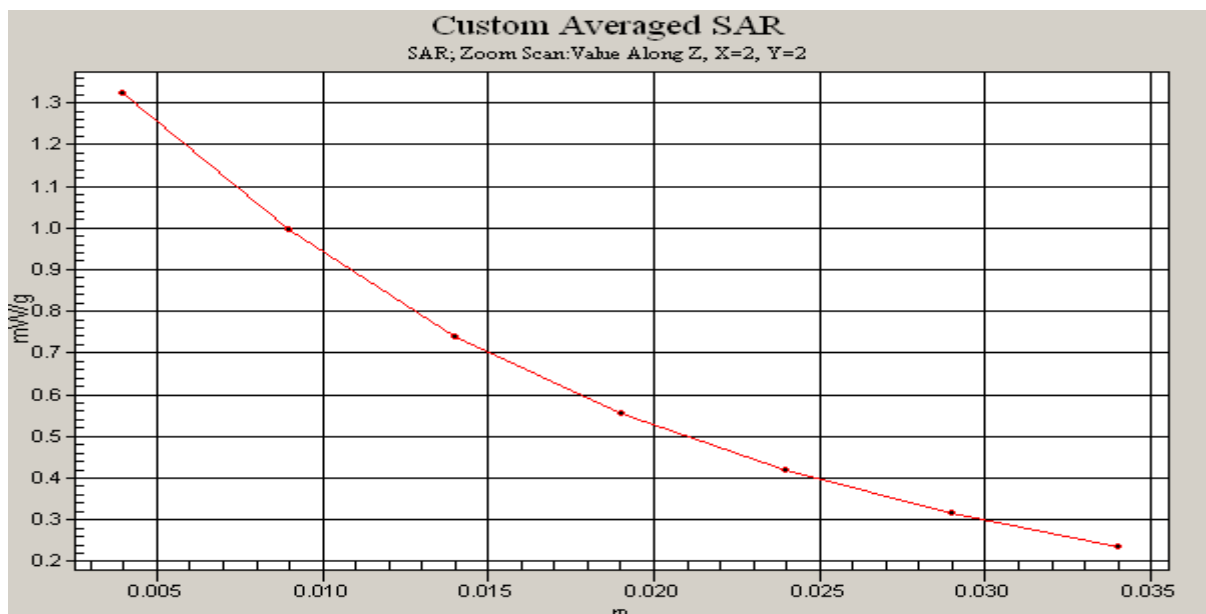
Measurement grid: dx=8mm, dy=8mm, dz=5mm

Reference Value = 35.5 V/m; Power Drift = 0.006 dB

Peak SAR (extrapolated) = 1.62 W/kg

SAR(1 g) = 1.25 mW/g

Maximum value of SAR (measured) = 1.32 mW/g



SAMSUNG FCC ID : A3LSCHI640 -- 1900 MHz PCS CDMA Body SAR

DUT: SCH-i640 (Body); Serial: FB-048-D

Program Name: SCH-i640 PCS Body (Job No.: FB-048)

Procedure Name: Body, Ch.0600, Ant.Out, Bat.Extended

Procedure Notes: Meas.Tissue Temp(celsius)-21.4;Test Date-07/Sep/2004[OET Bulletin 65-Supplement C, July 2001]

Communication System: PCS; Frequency: 1880 MHz;Duty Cycle: 1:1

Medium parameters used: $\sigma = 1.51$; mho/m, $\epsilon_r = 52.3$; $\rho = 1000 \text{ kg/m}^3$

Phantom section: Flat Section

DASY4 Configuration:

- Probe: ET3DV6 - SN1617; ConvF(4.5, 4.5, 4.5); Calibrated: 2004-08-27
- Sensor-Surface: 4mm (Mechanical And Optical Surface Detection)
- Electronics: DAE3 Sn486; Calibrated: 2004-08-23
- Phantom: SAM 1800/1900 MHz; Type: SAM; Serial: TP-1248
- Measurement SW: DASY4, V4.3 Build 16; Postprocessing SW: SEMCAD, V1.8 Build 123

Body, Ch.0600, Ant.Out, Bat.Extended/Area Scan (51x71x1): Measurement grid: dx=20mm, dy=20mm

Maximum value of SAR (interpolated) = 1.26 mW/g

Body, Ch.0600, Ant.Out, Bat.Extended/Zoom Scan (5x5x7)/Cube 0:

Measurement grid: dx=8mm, dy=8mm, dz=5mm

Reference Value = 16.1 V/m; Power Drift = -0.1 dB

Peak SAR (extrapolated) = 1.72 W/kg

SAR(1 g) = 1.12 mW/g

Maximum value of SAR (measured) = 1.22 mW/g

