

835MHz Dipole Validation

Generic Twin Phantom; Flat Section;

Probe: ET3DV5 - SN1368 -- Probe Cal Date 2/99

Medium Parameters 835MHz: $\sigma = 0.82$ mho/m $\epsilon_r = 42.2$ $\rho = 1.00$ g/cm³

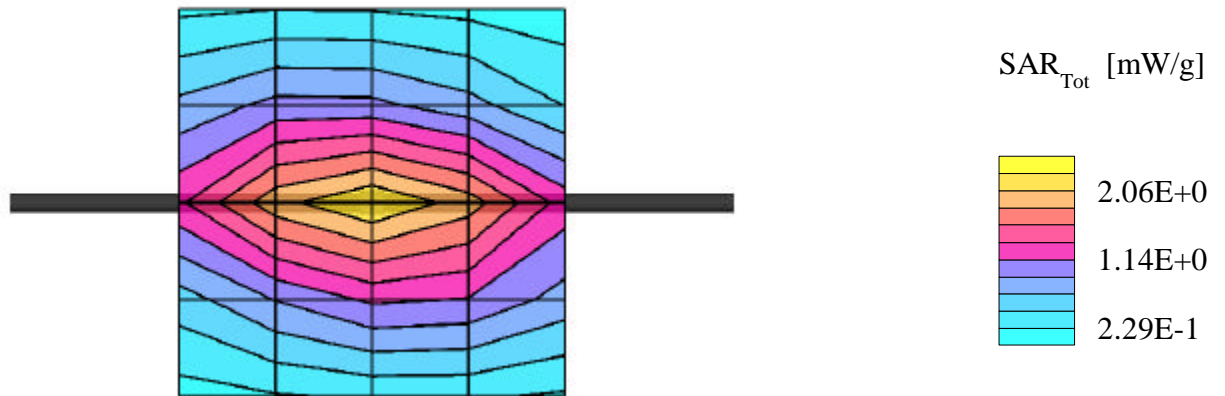
Antenna Position -- Out; Crest Factor 1.0

SAR (1g): 2.13 mW/g, SAR (10g): 1.39 mW/g

835MHz Dipole Validation (D835V2 S/N: 406)

Frequency: 835MHz; Antenna Input Power: 250 [mW]

PCTEST Brain Tissue Simulating Liquid



Validation Dipole D835V2 SN:406, d = 15mm

Frequency: 835 MHz; Antenna Input Power: 250 [mW]

Generic Twin Phantom; Flat Section; Grid Spacing: Dx = 20.0, Dy = 20.0, Dz = 10.0

Probe: ET3DV5 - SN1342/DAE3; ConvF(5.75,5.75,5.75); Brain 835 MHz: $\sigma = 0.79$ mho/m $\epsilon_r = 41.9$ $\rho = 1.00$ g/cm³

Cubes (2): Peak: 3.17 mW/g ± 0.03 dB, SAR (1g): 2.11 mW/g ± 0.03 dB, SAR (10g): 1.41 mW/g ± 0.04 dB, (Worst-case extrapolation)

Penetration depth: 13.4 (12.3, 14.9) [mm]

Powerdrift: -0.01 dB

