

FCC ID: A3LSCHA101

Hand SAR

Test Date(s): 11/11/99

Generic Twin Phantom; Flat Section;

Probe: ET3DV5 - SN1368 -- Probe Cal Date 2/99

Medium Parameters 835 Muscle: $\sigma = 0.95$ mho/m $\epsilon_r = 56.2$ $\rho = 1.00$ g/cm³

Antenna Position -- In

Crest Factor 1.0

SAR (1g): 2.65 mW/g, SAR (10g): 1.53 mW/g

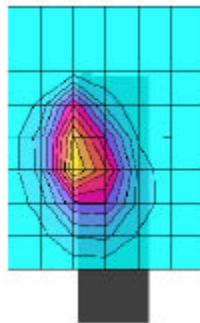
SAMSUNG CDMA Only Phone Model: SCH-A101

CDMA Mode

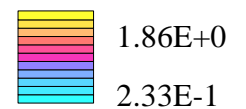
Ch. 363 -- 835.89MHz

Conducted Power -- 23.0dBm

HAND SAR



SAR_{Tot} [mW/g]



FCC ID: A3LSCHA101

Hand SAR

Test Date(s): 11/11/99

Generic Twin Phantom; Flat Section;

Probe: ET3DV5 - SN1368 -- Probe Cal Date 2/99

Medium Parameters 835 Muscle: $\sigma = 0.95$ mho/m $\epsilon_r = 56.2$ $\rho = 1.00$ g/cm³

Antenna Position -- Out

Crest Factor 1.0

SAR (1g): 3.41 mW/g, SAR (10g): 2.00 mW/g

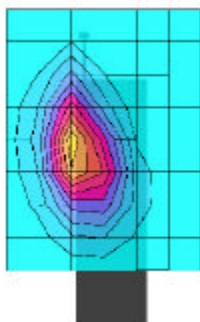
SAMSUNG CDMA Only Phone Model: SCH-A101

CDMA Mode

Ch. 363 -- 835.89MHz

Conducted Power -- 23.0dBm

HAND SAR



SAR_{Tot} [mW/g]

