

FCC ID: A3LSCHA101

Body SAR

Test Date(s): 11/12/99

Generic Twin Phantom; Flat Section;

Probe: ET3DV5 - SN1368 -- Probe Cal Date 2/99

Medium Parameters 835 Muscle: $\sigma = 0.95$ mho/m $\epsilon_r = 56.2$ $\rho = 1.00$ g/cm³

Antenna Position -- In

Crest Factor 1.0

SAR (1g): 0.244 mW/g, SAR (10g): 0.165 mW/g

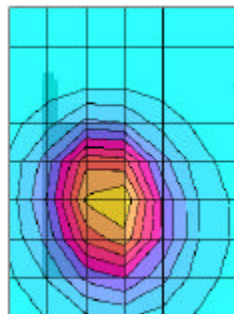
SAMSUNG CDMA Only Phone Model: SCH-A101

CDMA Mode

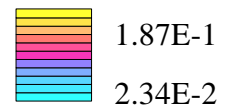
Ch. 1013 -- 824.70MHz

Conducted Power -- 23.0dBm

BODY SAR



SAR_{Tot} [mW/g]



FCC ID: A3LSCHA101

Body SAR

Test Date(s): 11/12/99

Generic Twin Phantom; Flat Section;

Probe: ET3DV5 - SN1368 -- Probe Cal Date 2/99

Medium Parameters 835 Muscle: $\sigma = 0.95$ mho/m $\epsilon_r = 56.2$ $\rho = 1.00$ g/cm³

Antenna Position -- Out

Crest Factor 1.0

SAR (1g): 0.654 mW/g, SAR (10g): 0.445 mW/g

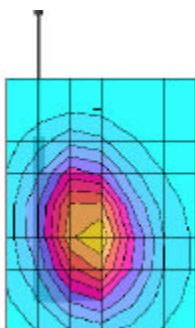
SAMSUNG CDMA Only Phone Model: SCH-A101

CDMA Mode

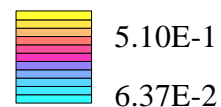
Ch. 1013 -- 824.70MHz

Conducted Power -- 23.0dBm

BODY SAR



SAR_{Tot} [mW/g]



FCC ID: A3LSCHA101

Body SAR

Test Date(s): 11/12/99

Generic Twin Phantom; Flat Section;

Probe: ET3DV5 - SN1368 -- Probe Cal Date 2/99

Medium Parameters 835 Muscle: $\sigma = 0.95$ mho/m $\epsilon_r = 56.2$ $\rho = 1.00$ g/cm³

Antenna Position -- In

Crest Factor 1.0

SAR (1g): 0.709 mW/g, SAR (10g): 0.478 mW/g

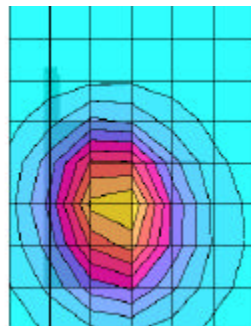
SAMSUNG CDMA Only Phone Model: SCH-A101

CDMA Mode

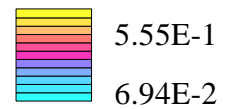
Ch. 363 -- 835.89MHz

Conducted Power -- 23.0dBm

BODY SAR



SAR_{Tot} [mW/g]



FCC ID: A3LSCHA101

Body SAR

Test Date(s): 11/12/99

Generic Twin Phantom; Flat Section;

Probe: ET3DV5 - SN1368 -- Probe Cal Date 2/99

Medium Parameters 835 Muscle: $\sigma = 0.95$ mho/m $\epsilon_r = 56.2$ $\rho = 1.00$ g/cm³

Antenna Position -- Out

Crest Factor 1.0

SAR (1g): 1.18 mW/g, SAR (10g): 0.798 mW/g

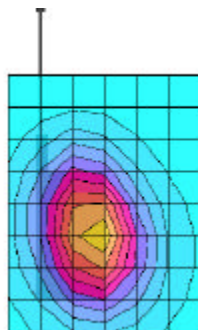
SAMSUNG CDMA Only Phone Model: SCH-A101

CDMA Mode

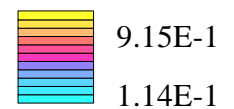
Ch. 363 -- 835.89 MHz

Conducted Power -- 23.0dBm

BODY SAR



SAR_{Tot} [mW/g]



FCC ID: A3LSCHA101

Body SAR

Test Date(s): 11/12/99

Generic Twin Phantom; Flat Section;

Probe: ET3DV5 - SN1368 -- Probe Cal Date 2/99

Medium Parameters 835 Muscle: $\sigma = 0.95$ mho/m $\epsilon_r = 56.2$ $\rho = 1.00$ g/cm³

Antenna Position -- In

Crest Factor 1.0

SAR (1g): 0.313 mW/g, SAR (10g): 0.210 mW/g

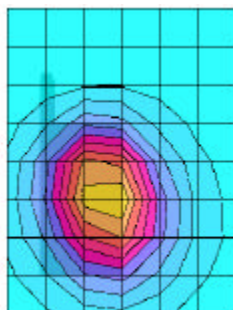
SAMSUNG CDMA Only Phone Model: SCH-A101

CDMA Mode

Ch. 777 -- 848.31MHz

Conducted Power -- 23.0dBm

BODY SAR



SAR_{Tot} [mW/g]



FCC ID: A3LSCHA101

Body SAR

Test Date(s): 11/12/99

Generic Twin Phantom; Flat Section;

Probe: ET3DV5 - SN1368 -- Probe Cal Date 2/99

Medium Parameters 835 Muscle: $\sigma = 0.95$ mho/m $\epsilon_r = 56.2$ $\rho = 1.00$ g/cm³

Antenna Position -- Out

Crest Factor 1.0

SAR (1g): 0.634 mW/g, SAR (10g): 0.426 mW/g

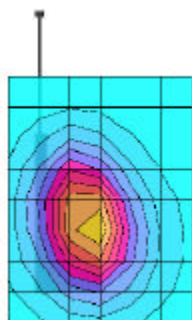
SAMSUNG CDMA Only Phone Model: SCH-A101

CDMA Mode

Ch. 777 -- 848.31MHz

Conducted Power -- 23.0dBm

BODY SAR



SAR_{Tot} [mW/g]

